



SET-UP INSTRUCTIONS

imageCLASS D600 Series

FOR INSTALLATION HELP AND OPERATIONAL
INSTRUCTIONS, CALL:

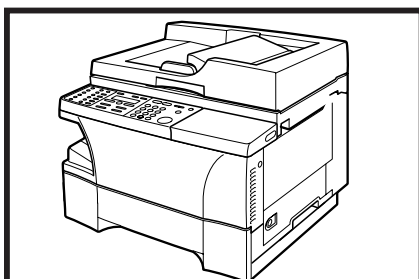
1-800-828-4040

U.S.A. CUSTOMERS

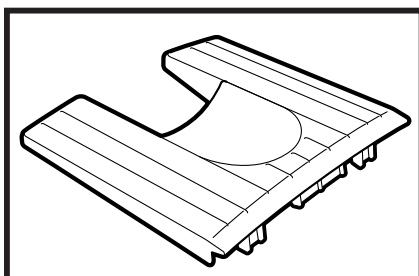
1-800 OK CANON

CANADA CUSTOMERS

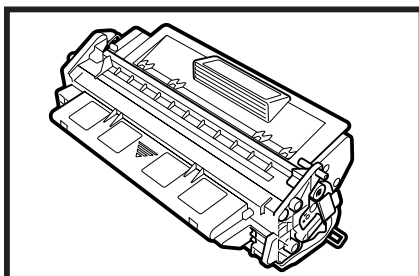
1 UNPACK MACHINE



Machine



Output Tray



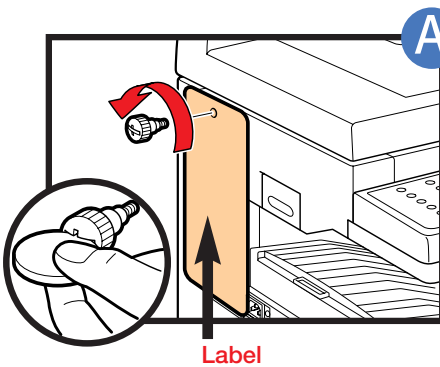
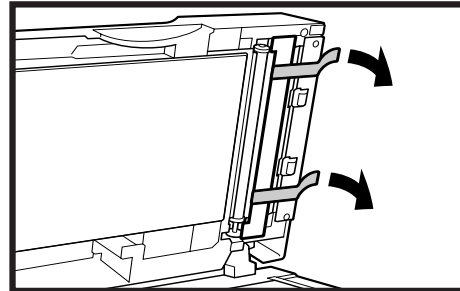
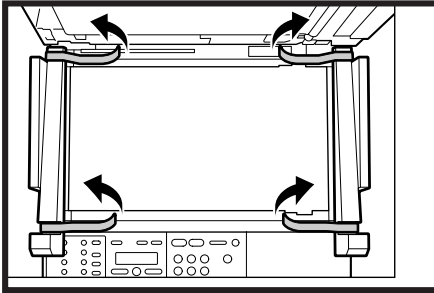
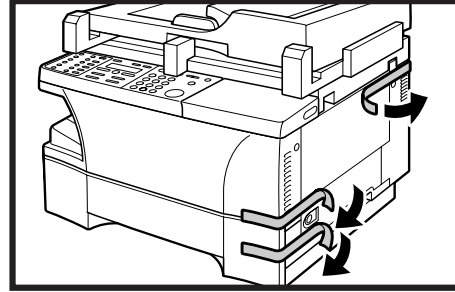
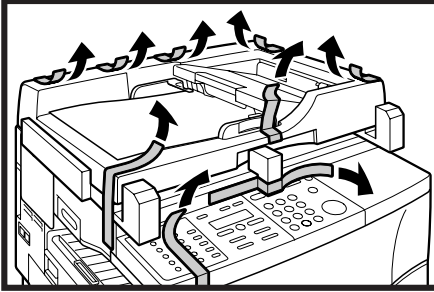
L50 Cartridge

REMOVE ALL ITEMS FROM THE BOX

- POWER CORD
- TELEPHONE LINE*
- DOCUMENTATION
(Set-up Instructions, Reference Guide, Fax Guide*,
Limited Warranty Card, Registration Card)
- DESTINATION LABEL*
- CD-ROM

**D680 Model*

REMOVE ALL SHIPPING MATERIALS

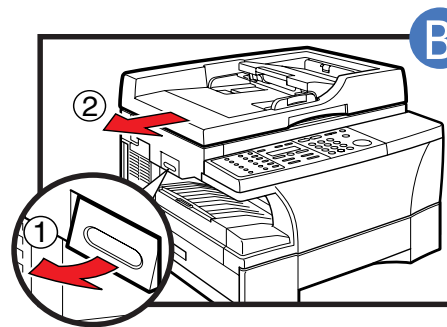


A

Remove the shipping attachment on the left side using a coin.

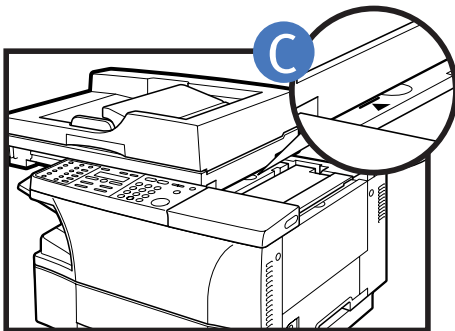
Otherwise the scanning unit of the machine is locked and you cannot make copies or send faxes.

Label



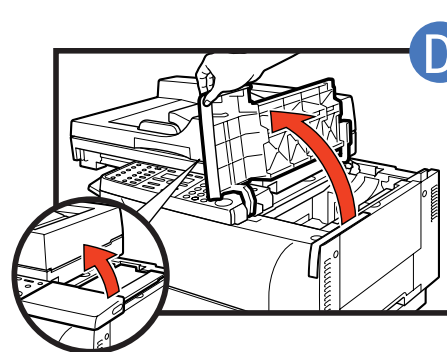
B

Lift the platen unit lever **(1)** and slide the platen unit **(2)**



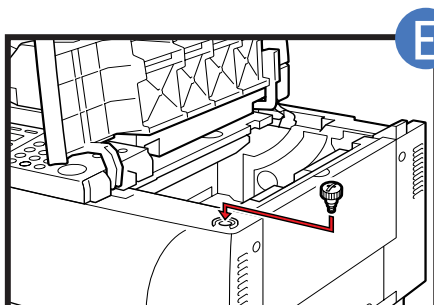
C

Slide left until the **I** mark appears.



D

Open the cartridge cover.

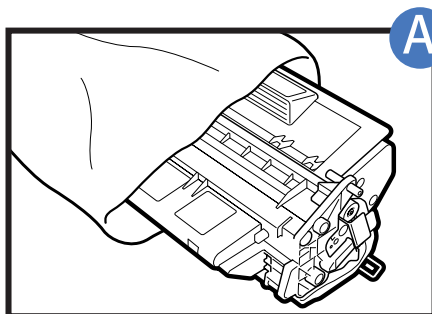


E

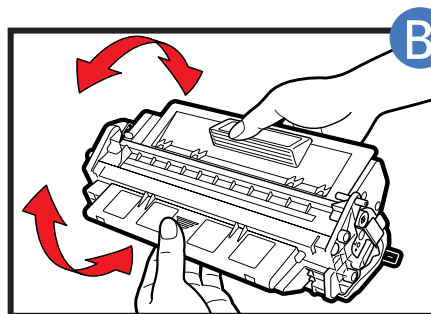
Insert the removed shipping attachment in the holder. Keeping the cartridge cover open, go to section 2 - INSTALL CARTRIDGE

Keep the shipping attachment in the holder in case you need to transport the machine.

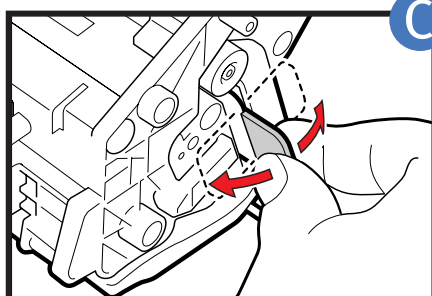
2 INSTALL CARTRIDGE



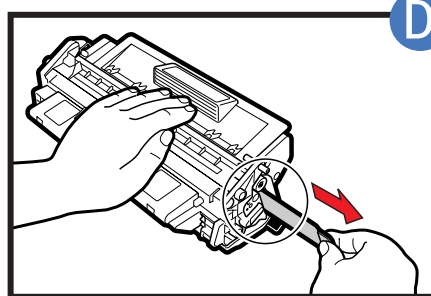
A Remove the new cartridge from its bag.



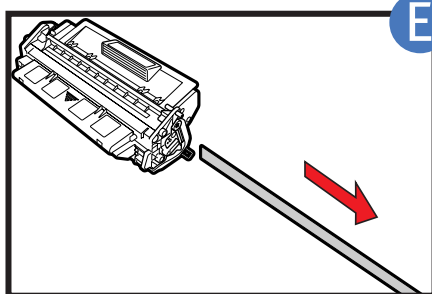
B Rock the cartridge 5 or 6 times to distribute the toner evenly.



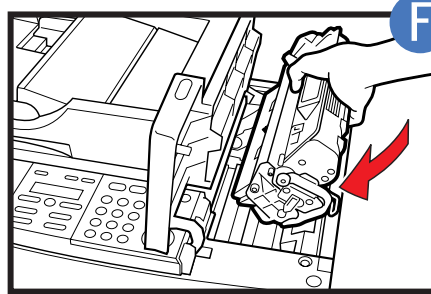
C Place the cartridge on a flat and stable surface, grip the sealing tape tab and snap in the direction shown. Make sure that the tab is detached from the cartridge.



D Grasp the cartridge with one hand, firmly and slowly pull the sealing tape tab with the other hand.



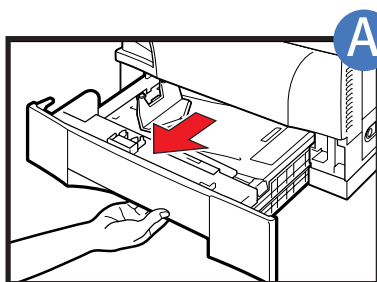
E Remove the sealing tape completely.



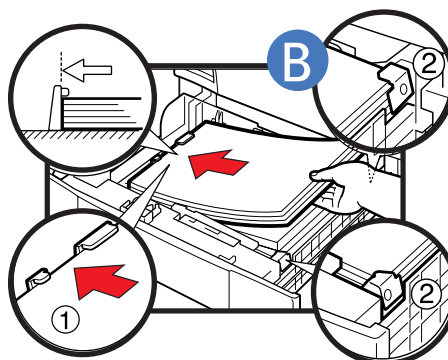
F Position the arrow mark on the cartridge towards the inside of the machine, and gently slide the cartridge in the machine as far as it will go.

Close the cartridge cover and slide the platen unit to the original position.

3 LOAD PAPER

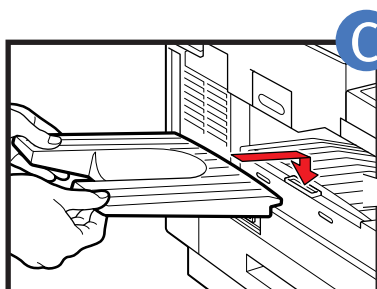


A Grip the cassette handle, and pull out towards you until the cassette comes to a stop.



B Load the paper stack beneath the cassette's length guide **(1)** and width guide's claws **(2)**.

Make sure that the paper stack does not exceed the length and width guide's claws in the cassette. Failure to do so will cause a paper jam.



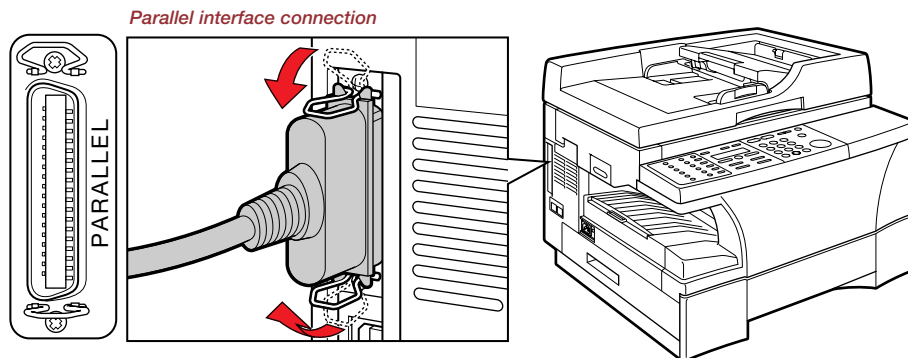
C

Hook the tab on the output tray onto the opening on the machine.

4 CONNECTIONS

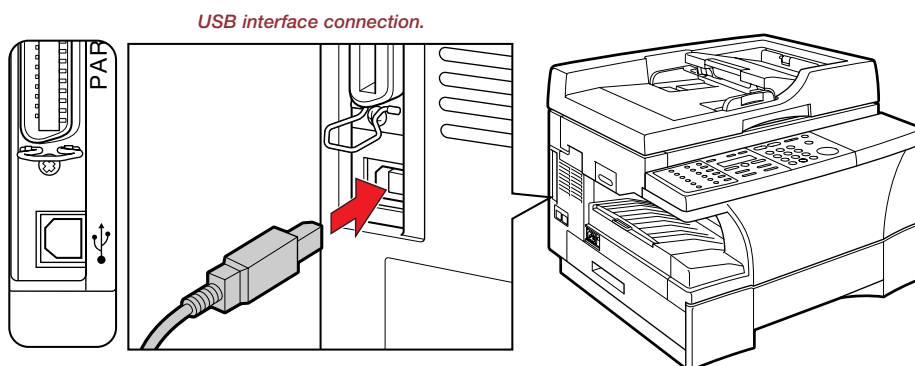
CONNECTING USING PARALLEL CABLE

Make sure the computer is turned off.



Connect to your computer using parallel cable.

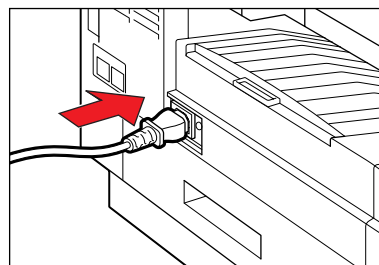
or CONNECTING USING USB CABLE



Connect to your computer using USB cable.

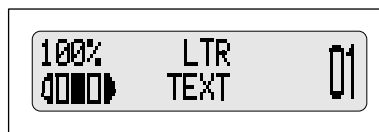
CONNECTING THE POWER CORD

When the power cord is plugged into the machine and into the wall outlet, the machine is turned on. The LCD displays PLEASE WAIT. Please wait until the LCD returns to the Copy Mode standby display.



*Connect the supplied power cord to the power cord connector on the left side of the machine.
Then connect the other end into a properly grounded 120 VAC three-prong outlet.*

Copy Mode standby display



5 SET FAX RECEIVE MODE (D680)

Press **FAX** to switch the machine to Fax Mode.
Press **RECEIVE MODE** until the mode you want appears:

ex. RECEIVE MODE
Manual

YOU CAN SELECT FROM THE FOLLOWING:

FAX ONLY: if you use your machine to receive only faxes.

DRPD: to distinguish between fax and voice calls by using Distinctive Ring Patterns.

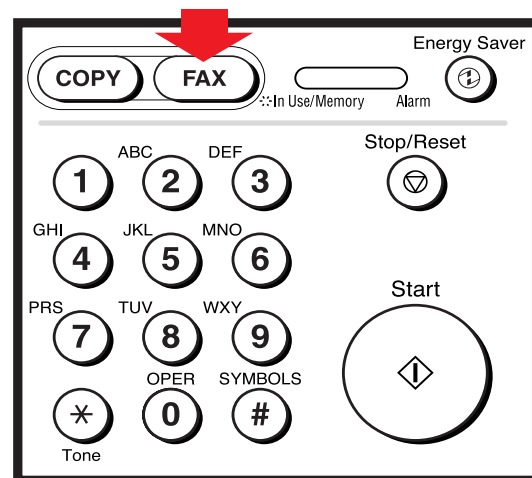
MANUAL: when a telephone is connected to the machine, you can receive faxes by pressing START before replacing the handset on the telephone.

AnsMode: if you want to receive faxes automatically and route voice calls to an answering machine.

FaxTel: when a telephone is connected to the machine, the machine automatically switches between faxes and voice calls.

ex. FAX 06/20/2001 17:08
Manual STANDARD

Press **SET**.



The selected receive mode is set and the machine returns to standby mode. The current date and the selected receive mode are displayed.

- The machine does not ring when it receives a fax in FaxOnly. If you want to be alerted when a fax is received, connect a telephone to the machine, and enable the INCOMING RING setting. (---> Fax Guide)
- For AnsMode, you need to connect an answering machine or a telephone with an answering machine to your machine (see below).
- Follow these guidelines when using the machine with an answering machine:
 - Set the answering machine to answer on the first or second ring.
 - When recording the outgoing message on the answering machine, the entire message must be no longer than 15 seconds.

CONNECTING THE TELEPHONE LINE AND AN EXTERNAL DEVICE (ONLY FOR THE D680 MODEL)

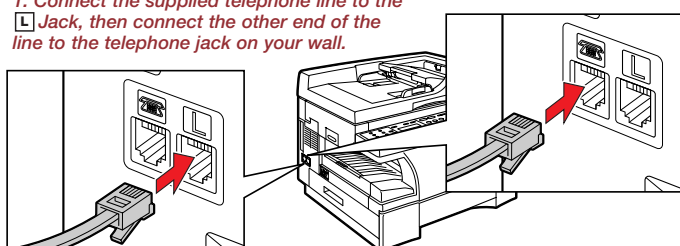
The machine has two jacks on the left side for connection of the following:

L : Telephone Line

: External device, such as telephone or answering machine.

1. Connect the supplied telephone line to the L Jack, then connect the other end of the line to the telephone jack on your wall.

2. When you require to send and receive both faxes and voice calls, connect the line from the telephone or answering machine to the Jack.



CONNECT EXTERNAL DEVICES AS FOLLOWS:

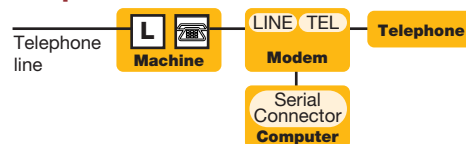
• Telephone or answering machine



• Telephone and answering machine



• Telephone and modem



• Built-in computer modem and telephone

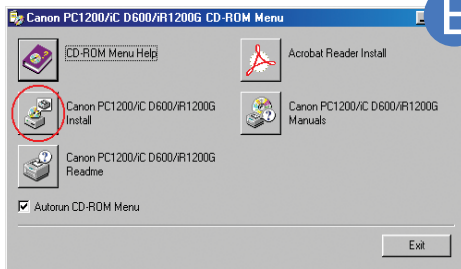


L : Telephone line jack
 : External device jack

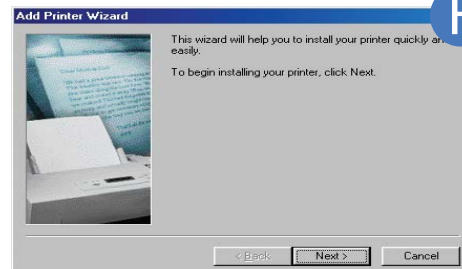
6 INSTALL PRINTER DRIVER (CAPT)

Windows 95/98/Me

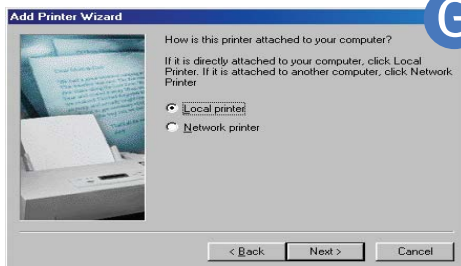
- A** Make sure the computer is turned off.
- B** Make sure the power cord of the machine is plugged into the power outlet and the machine is connected to your computer using parallel cable (cable not included).
- C** Turn on the computer. Start up Windows. PLUG and PLAY is being carried out and the FOUND NEW HARDWARE WIZARD (In Windows 95, New Hardware or Device Wizard) dialog box appears. Click CANCEL.
- D** Set the CD-ROM into the CD-ROM drive of your computer.



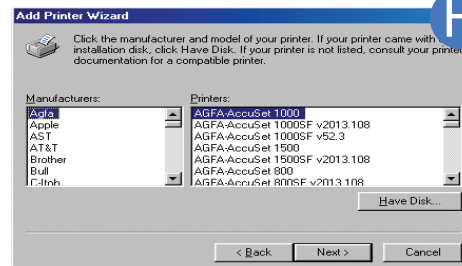
- E** Click Canon D600 INSTALL button.
Add Printer Wizard dialog box appears.



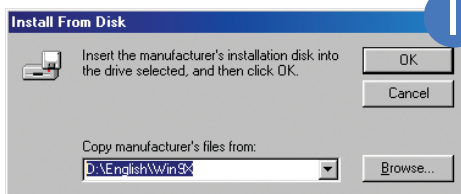
- F** Click NEXT.
Add Printer Wizard dialog box (Local printer/ Network printer) selection appears.



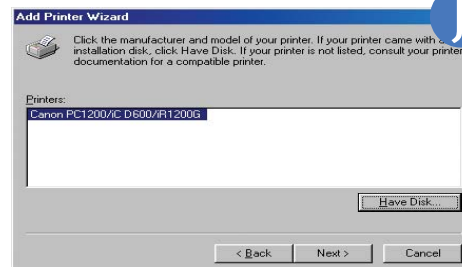
- G** Select LOCAL PRINTER, then click NEXT.
Add Printer Wizard dialog box (Manufacturers/printers) selection appears.



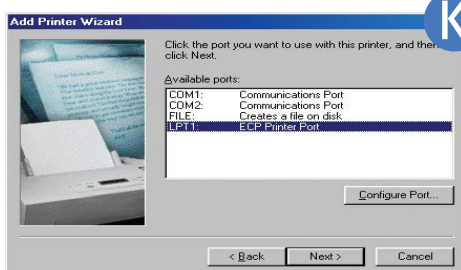
- H** Click HAVE DISK... in the MANUFACTURERS/ PRINTERS dialog box.
The Install From Disk dialog box appears.



- I** Use BROWSE... to select the directory that contains the CAPT.
For example, if you are using the CD-ROM to install the CAPT on Windows 95/98, and your CD-ROM drive is drive D:, browse to D:\English\Win9x, and click OK.

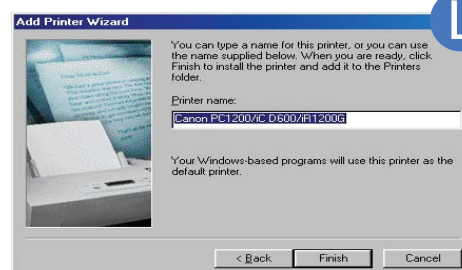


- J** Driver file selection dialog appears. Click NEXT.
Printer port selection dialog box appears.



- K** Select the printer port, the machine is connected to (usually LPT1:), then click NEXT. Add Printer Wizard dialog box (Printer name) appears.

If you select a port, other than the port D600 is connected to, COM: or FILE: port, the machine will not print.



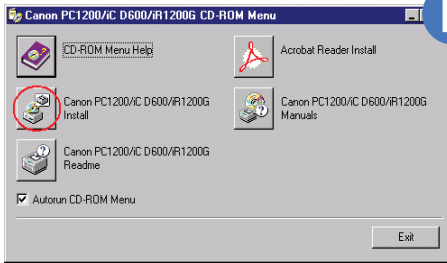
- L** Click FINISH. If you wish to change printer name, type a new name into the text box.



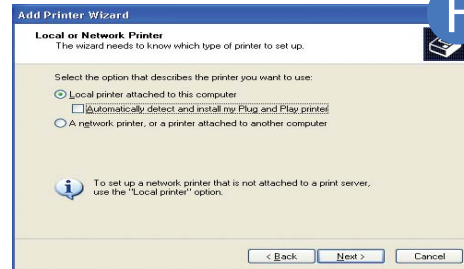
- M** When the installation is complete, the following dialog box appears. To close the dialog box, click OK.

Windows XP

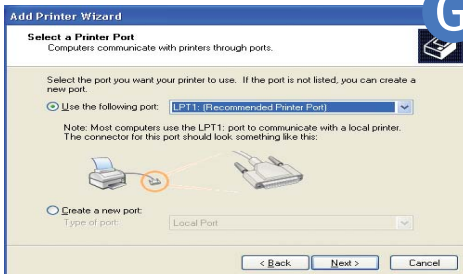
- A** Make sure the computer is turned off.
- B** Make sure the power cord of the machine is plugged into the power outlet and the machine is connected to your computer using parallel cable.
- C** Turn on the computer. Start up Windows XP. PLUG and PLAY is being carried out and the FOUND NEW HARDWARE WIZARD dialog box appears. Click CANCEL. For installations, using PLUG and PLAY function of your computer, ----->Printer Guide.
- D** Set the CD-ROM into the CD-ROM drive of your computer.



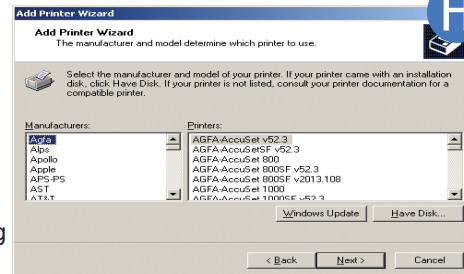
- E** Click Canon D600 INSTALL button.
Add Printer Wizard dialog box appears. Click NEXT.



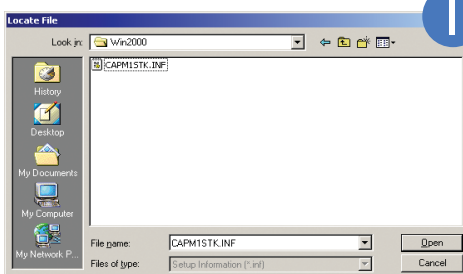
- F** Select LOCAL PRINTER ATTACHED TO THIS COMPUTER, then click NEXT.
Printer port selection dialog box appears. Automatically detect and install my PLUG and PLAY printer is not recommended.



- G** Check on the use following port: Select the printer port, the machine is connected to (usually LPT1: Recommended printer port), then click NEXT.
Add Printer Wizard dialog box (Manufacturers/ Printers selection) appears.



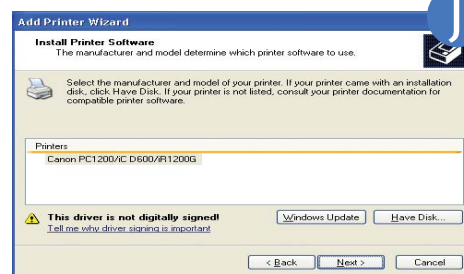
- H** Click HAVE DISK...in the MANUFACTURERS/ PRINTERS dialog box.
The Install From Disk dialog box appears.



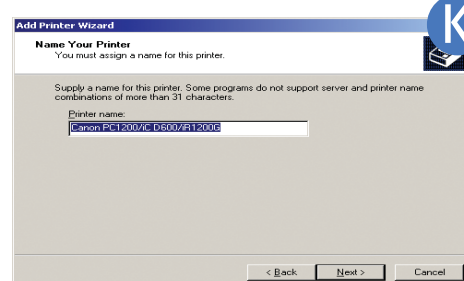
- I** Use BROWSE... to select the directory that contains the CAPT.
For example, if your CD-ROM drive is drive D:, browse to D:/ English/WinXP, click OPEN.



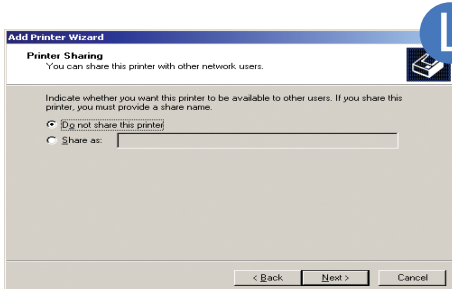
- J** Make sure the folder is selected in the COPY MANUFACTURER'S FILES FROM box, then click OK.



- J** Driver file selection dialog box appears. Click NEXT.
Add Printer Wizard dialog box (Printer name) appears.

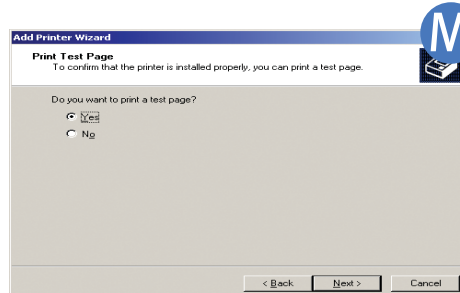


- K** Click NEXT.
If you wish to change printer name, type a new name into the text box.



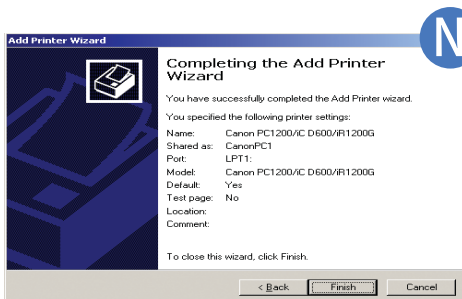
L If this printer is shared with other computers, check on **SHARED** option. Click **NEXT**.

You can also modify setting of this option after the installation, using **Sharing** tab from the **Printer Properties**.



M Click **NEXT**.

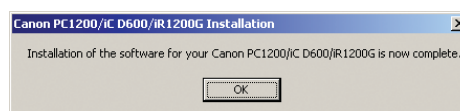
Click **YES** if you want to print a test page, or **NO** if you do not want to print a test page.



N Click **FINISH**.

Click **Yes** if the **Digital Signature Not Found** dialog box appears.

O When installation is complete, the following dialog box appears. Click **OK**.



P If you opted to print a test page, the test page is printed after the installation has been completed. If the test page printed correctly, click **YES**.

NOTE: For Windows 2000/NT 4.0 - see Printer Guide on CD-ROM

USB CABLE - Windows 98/Me/2000/XP

INSTALLING FROM CD-ROM MENU (Windows 98/Me)

- 1)** Make sure the computer is turned off.
- 2)** Make sure the power cord of the machine is plugged into the power outlet and the machine is connected to your computer (cable not included).
- 3)** Turn on the computer and **ADD NEW HARDWARE WIZARD** dialog box appears. Follow the instructions on screen to carry out **PLUG** and **PLAY** installation. When you are asked to select the directory that contains the **CAPT**, browse to **D:\English\Win9x** or **D:\English\WinME**, if your CD-ROM drive is drive **D**. For installation instructions using **PLUG** and **PLAY** for **USB Port**, ---> **Printer Guide**.

INSTALLING FROM CD-ROM MENU (Windows 2000/XP)

- 1)** Make sure the computer is turned off.
- 2)** Make sure the power cord of the machine is plugged into the power outlet and the machine is connected to your computer, then turn on the computer.
- 3)** As the **USB class driver** is automatically detected, perform the same steps as described for "Installing from CD-ROM Menu (Windows 2000)" of "Parallel Cable Users" (--->pp.25-30). When you are asked to select the printer port, select either **USBPRNXX** or **USBXXX** (**XX** or **XXX** represents a set of numbers).

For installation instructions using **PLUG** and **PLAY** or **ADD PRINTER WIZARD** for **USB Port**, refer to the **Printer Guide**.