



2 Easy Setup Instructions for USB Connection and Software Installation Windows®

Canon PIXMA MX7600 series
Office All-In-One



Important
Before proceeding to USB connection and software installation, be sure to read your setup sheet for preparing the machine first and complete hardware setup and Print Head alignment.

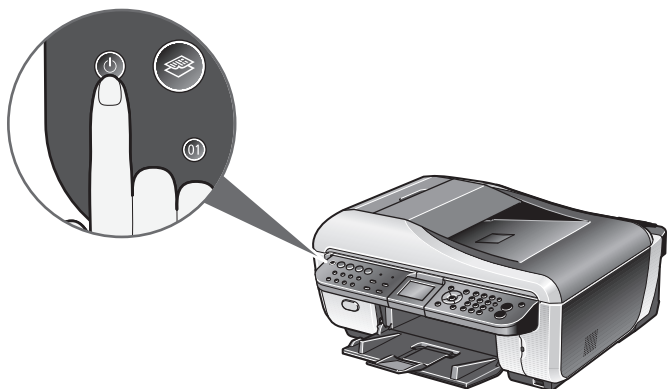
- USB connection software installation are explained here. For wired LAN connection, refer to the *Network Setup Guide*.
- A USB cable is necessary to connect the machine with your computer.



- Note**
- The screens below refer to Windows Vista™ operating system Ultimate Edition (hereafter referred to as "Windows Vista") installation.
 - Screens may vary depending on the operating system you are using.
 - Quit all running applications before installation.
 - Log into a user account with the administrator privilege.
 - Do not switch users during the installation process.
 - A message asking for your confirmation to restart your computer may appear during the installation process. If this message is displayed, follow the on-screen instructions and click **OK**.
 - The installation resumes from where it left off when your computer has been restarted. While restarting, do not remove the *Setup CD-ROM*.

1 Be sure to **TURN THE MACHINE OFF** before continuing.

- (1) Press the **ON/OFF** button.



- (2) Make sure that all the lamps on the Operation Panel have gone out.

2 Turn the computer on and start Windows.



Important
If the **Found New Hardware** or **Found New Hardware Wizard** screen appears automatically, remove the USB cable connected to your computer. Click **Cancel** to quit the screen. In Windows Vista, the screen may close automatically when the USB cable is unplugged. Then turn off the machine and proceed from Step 3 to install the software.



3 Insert the *Setup CD-ROM*.

The setup program should run automatically.

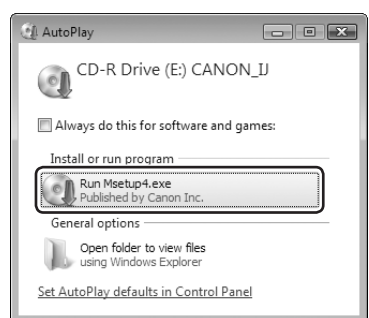
In Windows Vista, go to Step 4. In Windows XP and Windows 2000, go to Step 6.



If the setup program does not run automatically, refer to "Cannot Install the MP Drivers" in the *Quick Start Guide*.

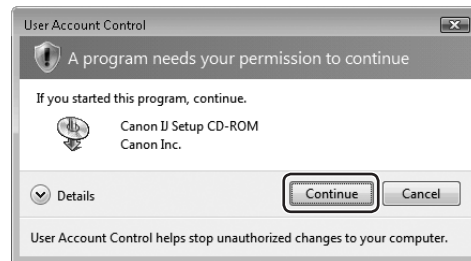
4 If the **AutoPlay** screen appears, click **Run Msetup4.exe**.

This screen will not appear in Windows XP and Windows 2000.



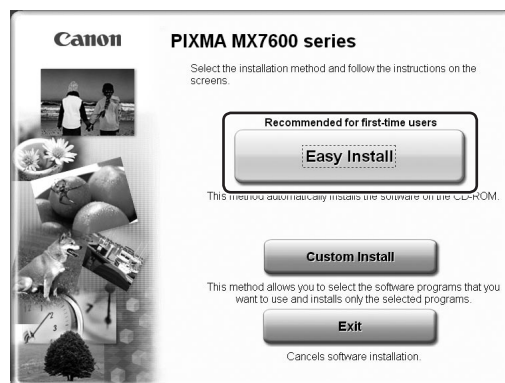
5 If the **User Account Control** screen appears, click **Continue**. If the same screen reappears in subsequent steps, click **Continue**.

This screen will not appear in Windows XP and Windows 2000.



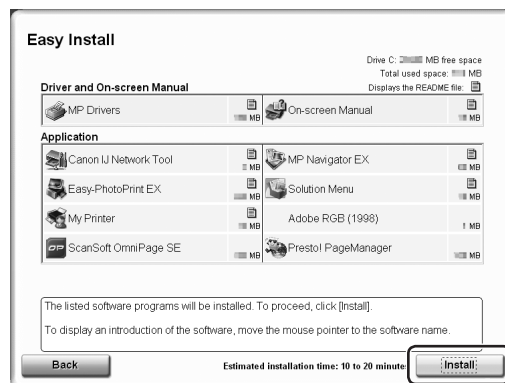
6 When the main menu appears, click **Easy Install**.

The MP Drivers, On-screen Manuals, and application software are installed automatically.



Note
If you want to select particular items to install, click **Custom Install** and follow the on-screen instructions to proceed with the installation.

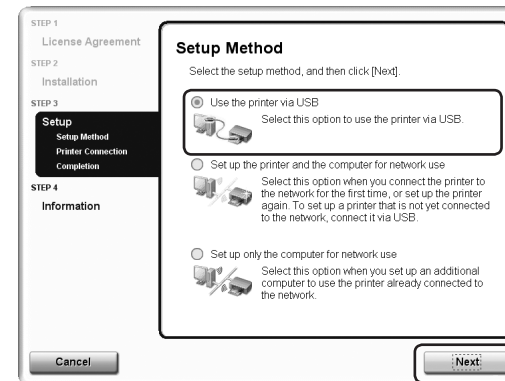
7 When the list of applications to install appears, confirm the contents, then click **Install**.



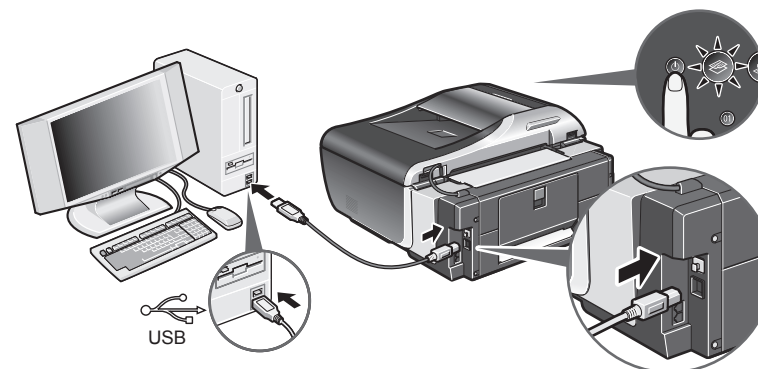
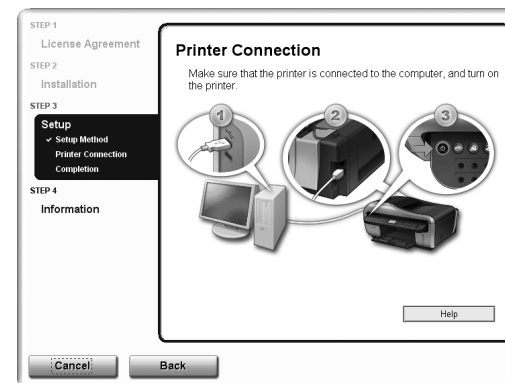
Note
Move the cursor over items to display explanations of each application.

8 Read the License Agreement carefully and click **Yes**. The software installation screen may appear during the installation process. Read the contents on the screen and follow the on-screen instructions to install the software.

9 When the **Setup Method** screen appears, select **Use the printer via USB**, then click **Next**.



10 When the **Printer Connection** screen appears, connect one end of the USB cable to the computer, the other to the machine, then **TURN THE MACHINE ON**.



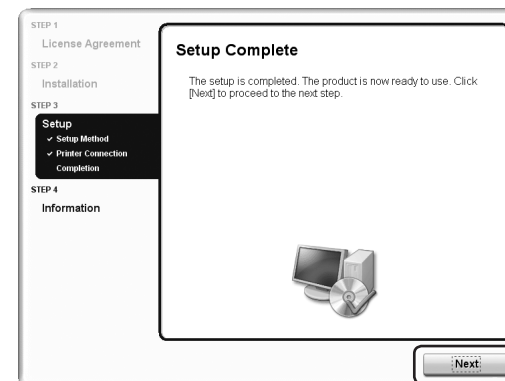
When you turn on the machine, the **COPY** button flashes green, then remain it.

The software will begin identifying the printer port being used.



Important
If you cannot go to the next procedure after three minutes, refer to "Cannot Install the MP Drivers" in the *Quick Start Guide*.

11 When the **Setup Complete** screen appears, click **Next**.

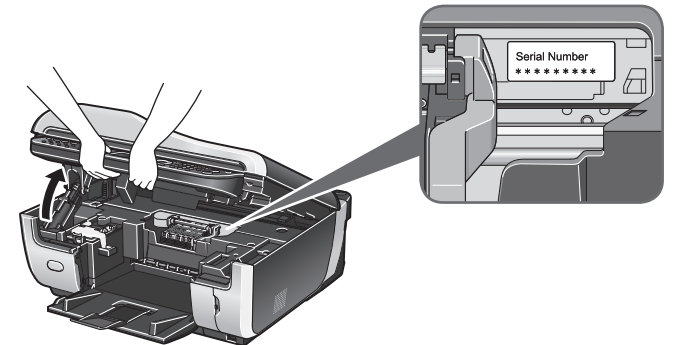


12 When the **User Registration** screen appears, click **Next**.



Note
To register later, click **Cancel** and go to Step 13. After software installation is complete, double-click on the desktop.

If your network is connected to the Internet, the registration screen will appear. Follow the on-screen instructions to register your product. You will need your product serial number, which is located on the inside of the machine.



13 When the **PIXMA Extended Survey Program** screen appears, confirm the message. We would appreciate it if you would take part in the PIXMA Extended Survey Program regarding the use of Canon printers. If you can agree, click **Agree**.

If **Do not agree** is clicked, the PIXMA Extended Survey Program will not be installed but you can use the machine normally.

14 When the **Installation completed successfully** screen appears, click **Exit**.



The *Setup CD-ROM* will be ejected.

If it is not ejected automatically, remove it manually.

If **Restart** is displayed, make sure that the **Restart the system now (recommended)** check box is selected, then click **Restart**. After the computer restarts, remove the *Setup CD-ROM*.



Note
Keep the CD-ROM in a safe place in case you need to reinstall the software.

Software installation is now complete.

2 Easy Setup Instructions for USB Connection and Software Installation Macintosh®

Canon PIXMA MX7600 series
Office All-In-One

Important
Before proceeding to USB connection and software installation, be sure to read your setup sheet for preparing the machine first and complete hardware setup and Print Head alignment.

- USB connection software installation are explained here. For wired LAN connection, refer to the *Network Setup Guide*.
- A USB cable is necessary to connect the machine with your computer.

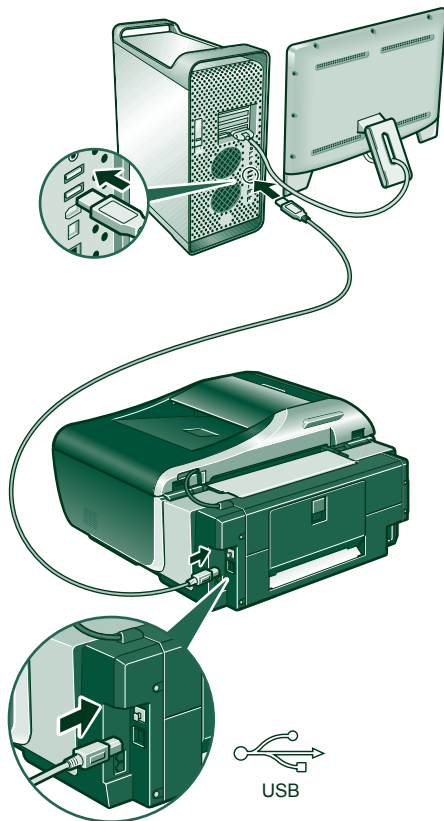
Note

- Since Mac® OS 9, Mac OS X Classic environments, or Mac OS X v.10.3.8 or earlier are not supported, do not connect the machine to these.
- The screens below refer to Mac OS X v.10.4.x installation. Screens may vary depending on the operating system you are using.
- Log on as an Administrator.
- Quit all running applications before installation.

- 1 Connect one end of the USB cable to the computer and the other to the machine.

Note

Make sure the machine is turned on.



- 2 Turn on your Mac and insert the *Setup CD-ROM*.

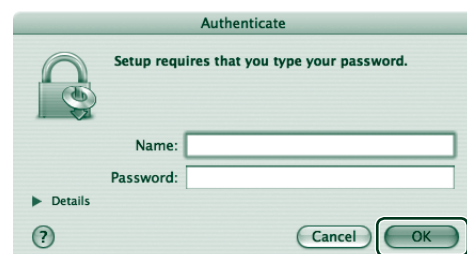
Note

If the CD-ROM folder does not open automatically, double-click the CD-ROM icon on the desktop.

- 3 Double-click the **Setup** icon.



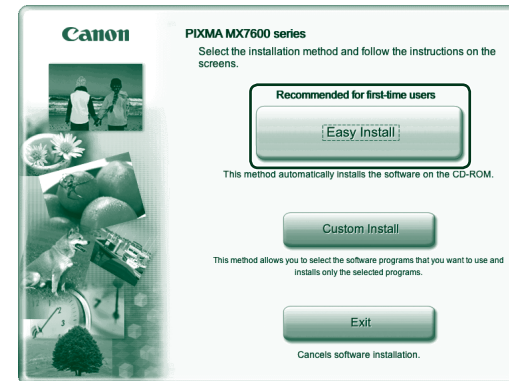
- 4 When the **Authenticate** screen appears, enter your administrator name and password. Click **OK**.



If you do not know your administrator name or password, click **?**, then follow the on-screen instructions.

- 5 When the main menu appears, click **Easy Install**.

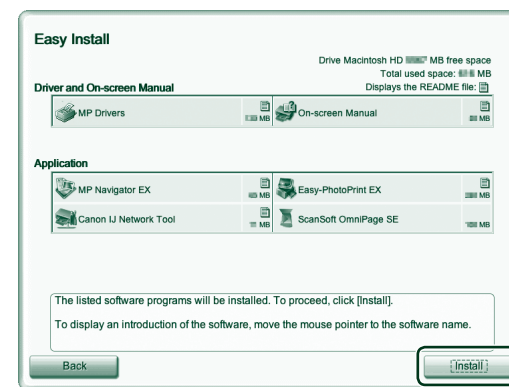
The MP Drivers, On-screen Manuals, and application software are installed automatically.



Note

If you want to select particular items to install, click **Custom Install** and follow the on-screen instructions to proceed with the installation.

- 6 When the list of applications to install appears, confirm the contents, then click **Install**.

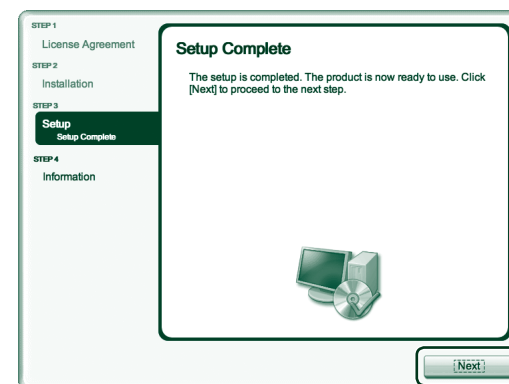


Note

Move the cursor over items to display explanations of each application.

- 7 Read the License Agreement carefully and click **Yes**. The software installation screen may appear during the installation process. Read the contents on the screen and follow the on-screen instructions to install the software.

- 8 When the **Setup Complete** screen appears, click **Next**.

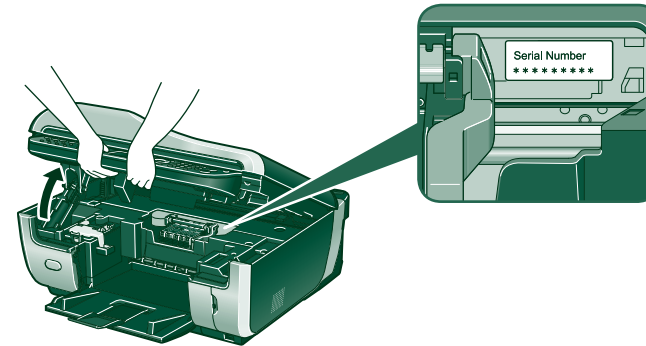


- 9 When the **User Registration** screen appears, click **Next**.

Note

To register later, click **Cancel** and go to Step 10. After software installation is complete, double-click **?** on the desktop.

If your network is connected to the Internet, the registration screen will appear. Follow the on-screen instructions to register your product. You will need your product serial number, which is located on the inside of the machine.



- 10 When the **Installation completed successfully** screen appears, click **Restart**.

After the computer restarts, remove the *Setup CD-ROM*.



When the computer restarts, the Canon IJ Network Tool will start up automatically.

Note

Keep the CD-ROM in a safe place in case you need to reinstall the software.

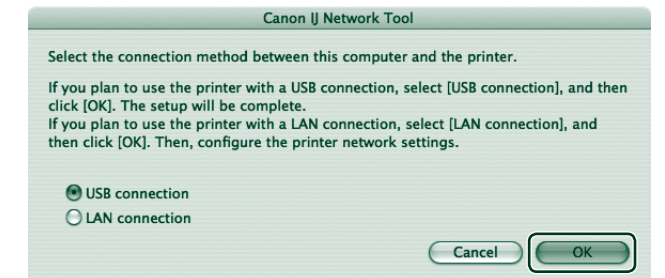
When using Mac OS X v.10.3.9:

Restarting the computer while connected to the machine may cause the machine not to be detected. To resolve this, either unplug the USB cable then plug it back in again, or turn the machine off then back on again.

Note

XXX FAX (where "XXX" is your machine's name) is shown in the **Printer Name** list (**Product** list in Mac OS X v.10.3.9), but you cannot add **XXX FAX**. You cannot send faxes from your computer via the machine.

- 11 When the **Canon IJ Network Tool** screen appears, select **USB connection**, then click **OK**.



Note

When using Mac OS X v.10.3.9, before using the Operation Panel on the machine to save scanned originals to the computer, it is necessary to select **MP Navigator EX** as the launch application on **Image Capture** under **Applications**. For details, refer to "Scanning Images" in the *User's Guide* on-screen manual.

Software installation is now complete.