

# Canon

## Digital Video Software Macintosh

Version 31

### Instruction Manual



English

# Contents

<b>Read This First</b> .....	<b>4</b>
Checking Supplied Accessories .....	4
<b>System Requirements</b> .....	<b>5</b>
<b>What is Digital Video Software?</b> .....	<b>6</b>
<b>Windows</b> .....	<b>7</b>
CameraWindow .....	7
[Acquire Images] Tab .....	7
[Print] Tab .....	8
[Set to Camera] Tab .....	9
Camera Browser Window .....	10
Browser Window .....	11
[Image Viewer] Window .....	15
[Trim Image] Window .....	16
[Color/Brightness Adjustment] Window .....	16
[Red Eye Correction] Window .....	17
[Insert Text] Window .....	17
[Level Adjustment] Window .....	18
[Tone Curve Adjustment] Window .....	18
[Sharpness] Window .....	19
[Auto Adjustment] Window .....	19
<b>Installing the Digital Video Software</b> .....	<b>20</b>
<b>Before Downloading Still Images</b> .....	<b>23</b>
Connecting the Camcorder to a Computer .....	23
Settings on the camcorder .....	23
Connecting the camcorder .....	24
<b>Downloading Still Images</b> .....	<b>25</b>
Using the Computer to Download Still Images (CameraWindow) .....	26
Auto-downloading .....	26
Applying Auto-downloading Settings .....	27
Downloading the Selected Still Images from the CameraWindow .....	30
Using the Camcorder to Download Still Images (Direct Transfer Function) .....	32
Setting the Direct Transfer Download Destination Folder .....	32
Direct Transfer .....	33
Using a Card Reader/Writer .....	34
Auto-downloading .....	35
Applying Auto-downloading Settings .....	35
Downloading the Selected Still Images from the ImageBrowser .....	36
<b>Printing Still Images</b> .....	<b>38</b>
Printing Still Images without Downloading Them .....	38
Printing Still Images Already Downloaded to the Computer .....	43
[Photo Print] .....	43
[Index Print] .....	45
[Layout Print] .....	47
<b>Organizing Images</b> .....	<b>49</b>
Applying Star Rating .....	49
Specifying the Keywords .....	50
Classifying the Images .....	51
Sort by the Shooting Date .....	51
Sort by the Star Rating .....	52

Renaming Multiple Files .....	54
Searching for Images.....	55
<b>Exporting Images .....</b>	<b>57</b>
Changing the File Type and Saving.....	57
Uploading Still Images to the camcorder .....	60
<b>Using Various Functions .....</b>	<b>62</b>
Attaching Images to E-mail Messages .....	62
Running a Slide Show .....	64
Adding Sound to a Still Image.....	65
Reviewing and Changing the Owner Name of the Camcorder.....	66
<b>Uninstalling the Software .....</b>	<b>67</b>
Uninstalling ImageBrowser .....	67
<b>Troubleshooting .....</b>	<b>68</b>

# Read This First

## ■ Disclaimer

- While every effort has been made to ensure that the information contained in this guide is accurate and complete, no liability can be accepted for any errors or omissions. Canon reserves the right to change the specifications of the hardware and software described herein at any time without prior notice.
- No part of this guide may be reproduced, transmitted, transcribed, stored in a retrieval system, or translated into any language in any form, by any means, without the prior written permission of Canon.
- Canon makes no warranties for damages resulting from corrupted or lost data due to mistaken operation or malfunction of the camcorder, the software, memory cards (SD, SDHC and miniSD Cards), personal computers, or peripheral devices, or due to use of a memory card not initialized by a Canon camcorder.

## ■ Trademark Acknowledgments

- Macintosh, Mac OS and iPhoto are trademarks of Apple Inc., registered in the U.S. and other countries.
- miniSD™ is a trademark of SD Card Association.
- The SD logo is a trademark. The SDHC logo is a trademark.
- Intel is a trademark or a registered trademark of Intel Corporation or its subsidiaries in the United States and other countries.
- Other names and products not mentioned above may be registered trademarks or trademarks of their respective companies.

© Canon Inc. 2008 All rights reserved.

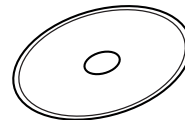
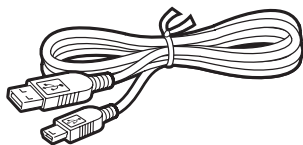
## ■ Safety Precautions

Do not play the supplied CD-ROM(s) in any CD player that does not support data CD-ROMs. Playing the CD-ROM(s) in an audio CD player (music player) could damage the speakers. It is also possible to suffer from hearing loss from listening with headphones to the loud sounds of a CD-ROM played on a music CD player.

## Checking Supplied Accessories

Use the following accessories to download recorded still images from the camcorder to your computer.

- Supplied USB cable  
The cable supplied with your camcorder may be different from the one described in this manual.
- DIGITAL VIDEO Solution Disk



The explanations in this manual use mainly Mac OS X version 10.3 screen shots. The steps and windows may vary depending on your computer.

# System Requirements

---

<b>OS:</b>	Mac OS X (v10.3 - v10.5)
<b>Computer Model:</b>	Computers that come with above OS preinstalled
<b>CPU:</b>	PowerPC G3/G4/G5, or Intel processor
<b>RAM:</b>	256 MB or more
<b>Interface:</b>	USB
<b>Free Hard Disk Space:</b>	Canon Utilities - ImageBrowser 300 MB or more
<b>Display:</b>	1024 × 768 pixels/32,000 colors or better



- Proper operation is not guaranteed on any particular system, even if it meets the requirements outlined above.
- ImageBrowser does not operate on disks initialized with the Unix File System (UFS).
- A CD-ROM drive is required to install the software.

# What is Digital Video Software?

---

Digital Video Software allows you to download still images you recorded with the camcorder to a computer and manage, print, and edit them.

## ■ ImageBrowser

- Viewing still images as thumbnails
- Managing by shooting date folders with still images
- Categorizing, organizing, and searching large volumes of still images
- Printing still images
- Editing still images
- Changing the data for still images and save them as new files
- Attaching still images to e-mail
- Viewing still images in a slide show
- Adding sound to a still image

## ■ CameraWindow

- Downloading still images to your computer
- Viewing still images directly from the camcorder, without downloading them
- Printing still images directly from the camcorder, without downloading them to the computer

This instruction manual explains how to install the software, what you can do with the main features and how to operate them. For more detailed operational instructions, refer to the Help menu of each software program.



Your camcorder may not support some features of the software.

## CameraWindow

After you connect the camcorder to your computer, you can use CameraWindow to download still images to the computer. Furthermore, you can print still images directly from the camcorder, without having to download them to the computer ( 38), and you can confirm and change the owner's name of the camcorder you specify ( 66). Refer to *Using the Computer to Download Still Images (CameraWindow)* ( 26) for launching the software. The Remote capture function is not supported by the camcorder.



- Click the [CameraWindow] icon in the Dock (bar appearing at the bottom of the desktop) if the Camera Control window does not appear.
- When the [CameraWindow] icon is not in the Dock, double click the [Canon Utilities] folder on the drive where the program was installed, followed by the [CameraWindow] folder and the [CameraWindow] icon.

### ■ [Acquire Images] Tab

After you connect the camcorder to your computer, use this tab to download still images to the computer.

#### Camera Control window

Selects a function in the Camera Control window.



Specify the image type to be downloaded and the destination folder.

Images in the camcorder are displayed allowing you to select images.

Images will be downloaded to the computer, and ImageBrowser starts.

## ■ [Print] Tab

After connecting the camcorder to your computer, use this tab to print still images without downloading them to the computer first. The window varies depending on the selected printing type. Refer to *Printing Still Images without Downloading Them* (38).

### Camera Control window

Prints all still images, one image per page.



Displays a list of the still images in the camcorder (built-in hard disk/memory or memory card), allowing you to select which ones to print.

Prints according to the DPOF print settings set by the camcorder.

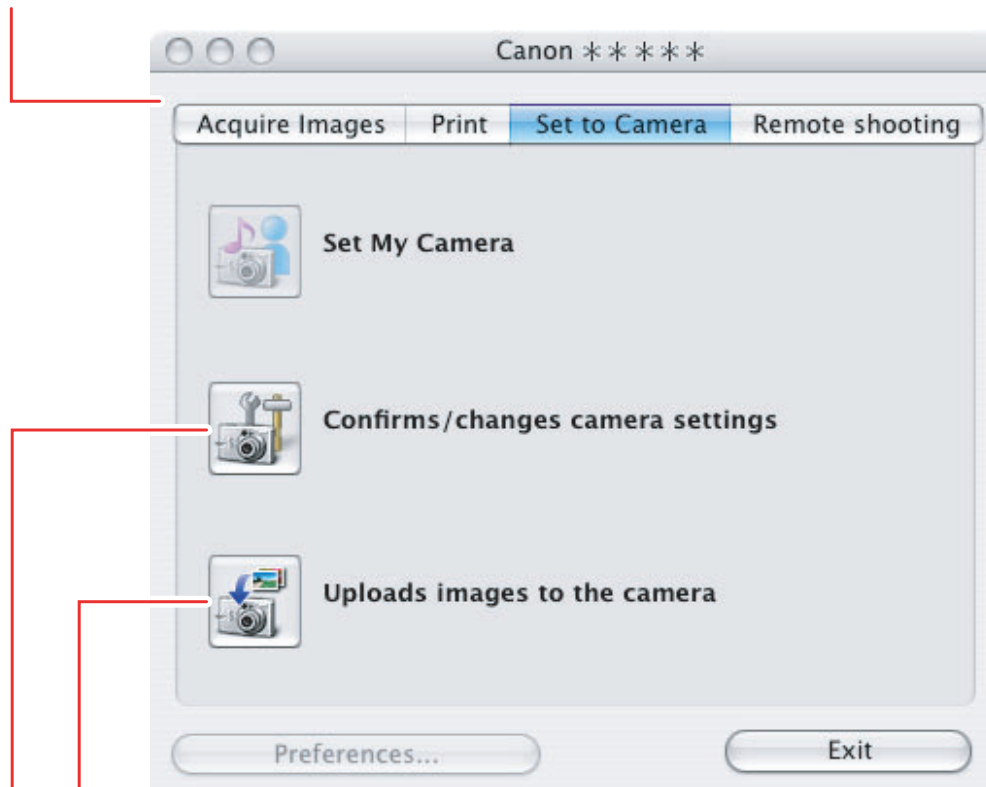
Prints all still images as an index page  
(rows of images with file names and image information).



## ■ [Set to Camera] Tab

This tab is used for confirming and changing the owner's name of the camcorder you can specify (📖 66) and uploading the still images to the camcorder. My Camera function is not supported by the camcorder.

Camera Control window



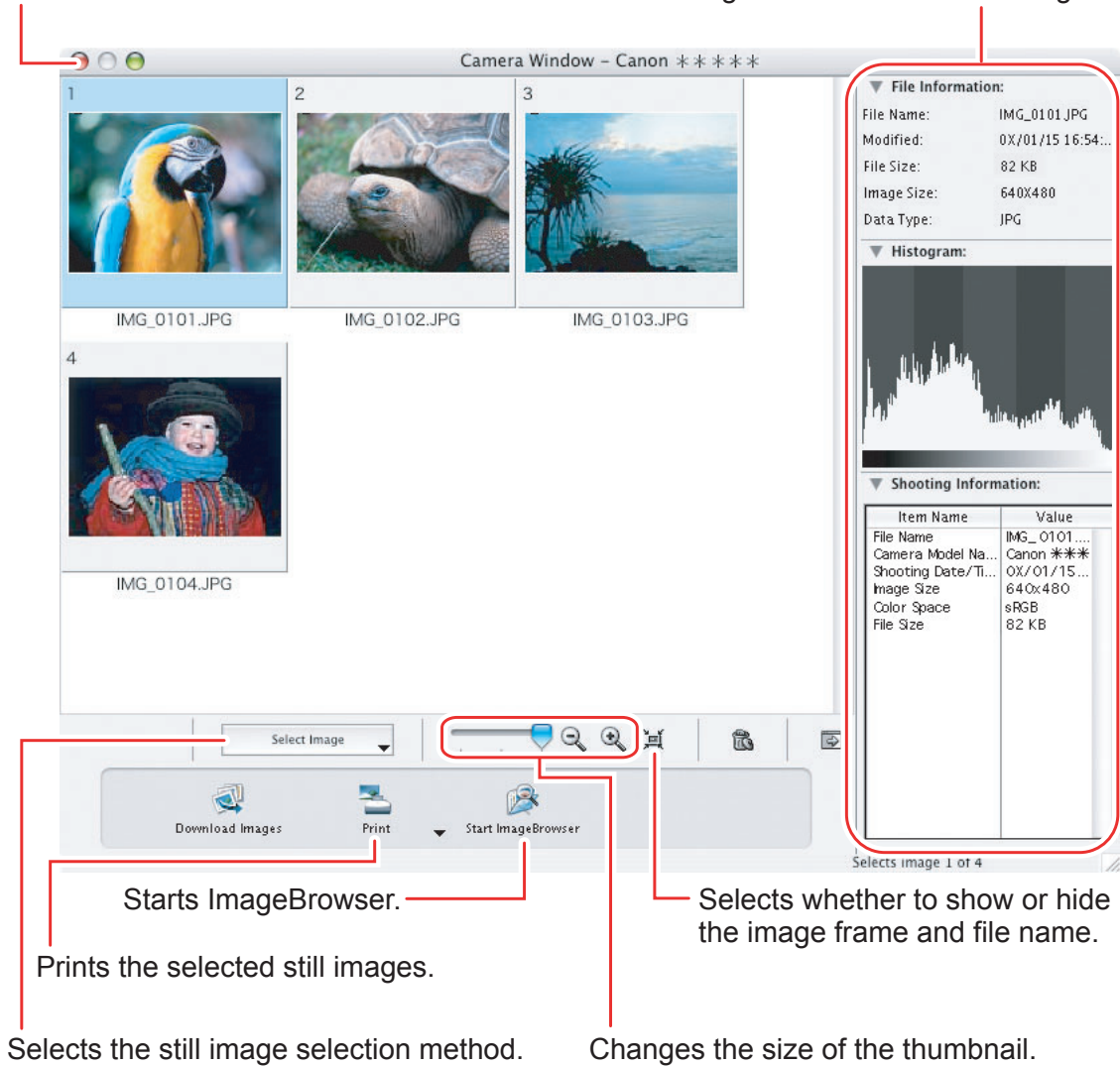
Uploading the images from the computer.

Enter or change the name of the camcorder's owner.

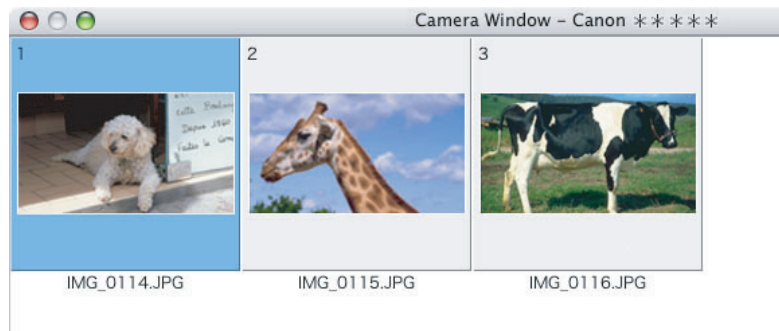
## ■ Camera Browser Window

Camera Browser window

Still image information and a histogram

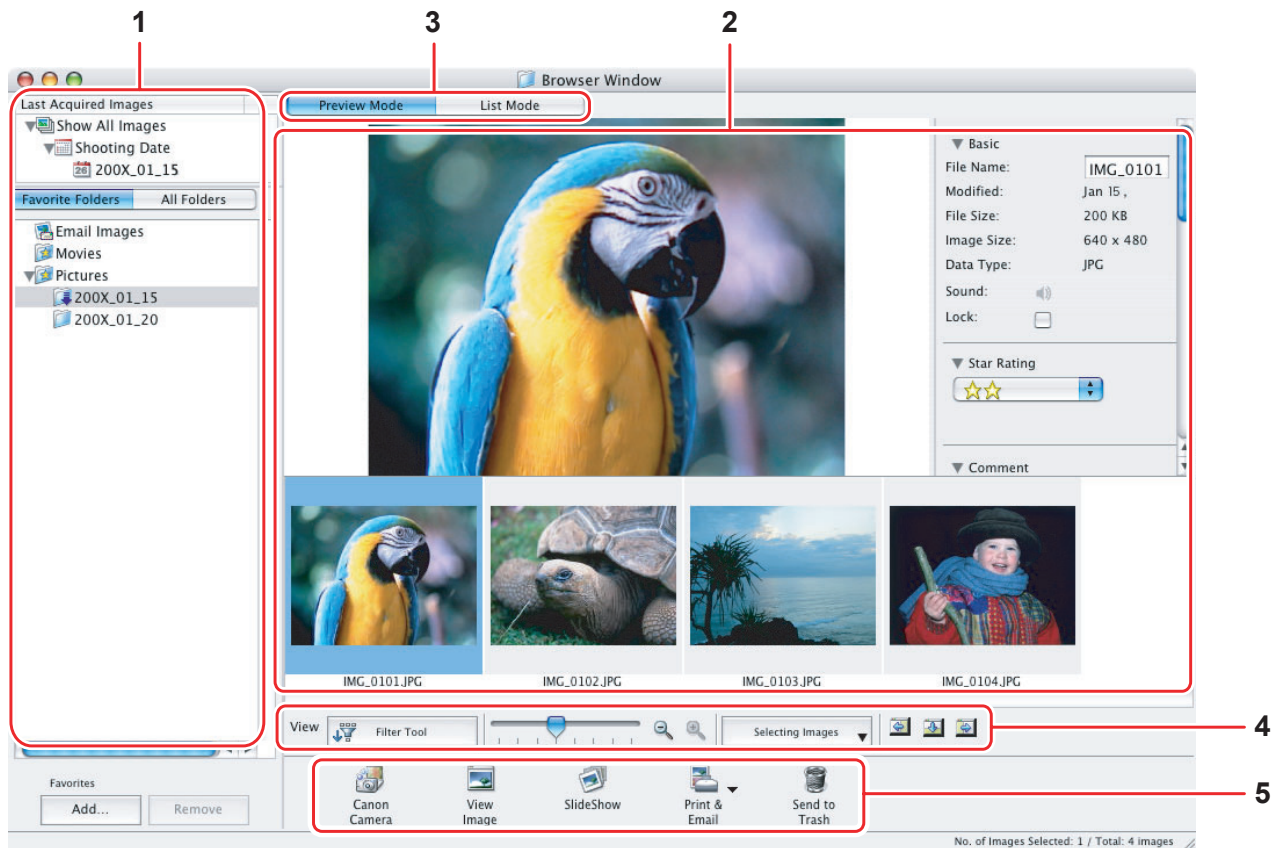


If your camcorder supports wide size still image (16:9 such as 1920 x 1080 pixels) recording, the thumbnails that appear in this window will be also 16:9 images. The sample images used on this instruction manual are normal size still images (4:3).




## Browser Window

ImageBrowser is a software program used for organizing, printing and editing the downloaded still images. To start ImageBrowser, click the [ImageBrowser] icon in the Dock. If the ImageBrowser icon is not in the Dock, double-click the [Canon Utilities] folder on the drive on which the program was installed, followed by the [ImageBrowser] folder and the [ImageBrowser] icon.



### 1 Explorer View

In the [Last Acquired Images] panel, the newly downloaded still images are placed into virtual folders classified by recording date. In the panel below, the folders that the downloaded still images are actually saved in are displayed. Selecting the [Favorite Folders] tab shows only the folders that are registered as favorites. The [All Folders] tab shows all available folders.  indicates that newly downloaded still images are in the folder.

Clicking the triangle symbol besides the folder name displays/hides the folder contents. To register a folder as Favorites, follow the instructions below.

**When you have selected the [Favorite Folders] tab:**

Click [Add] and specify a folder.

**When you have selected the [All Folders] tab:**

Select a folder and click [Add to Favorites].

To remove the registered folder, select the folder, and click [Remove].

### 2 Browser Area

This area displays the images contained in the selected folder.

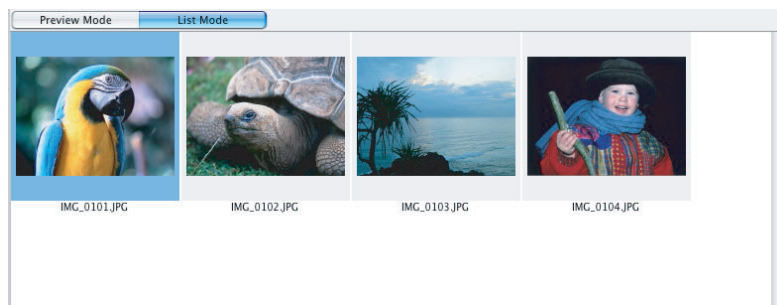
### 3 View Mode

You can select a view mode of images in the Browser Area.

**[Preview Mode]:** The thumbnails are displayed at the bottom of the Browser Area, and the Information Panel is displayed in the upper part.

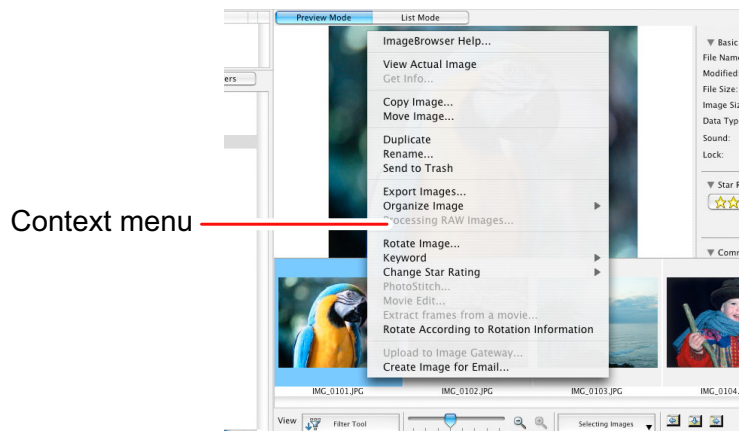


**[List Mode]:** The images are displayed as thumbnails. The thumbnails can be enlarged/reduced by selecting [Enlarge] or [Reduce] from the [View] menu.



#### Context Menu

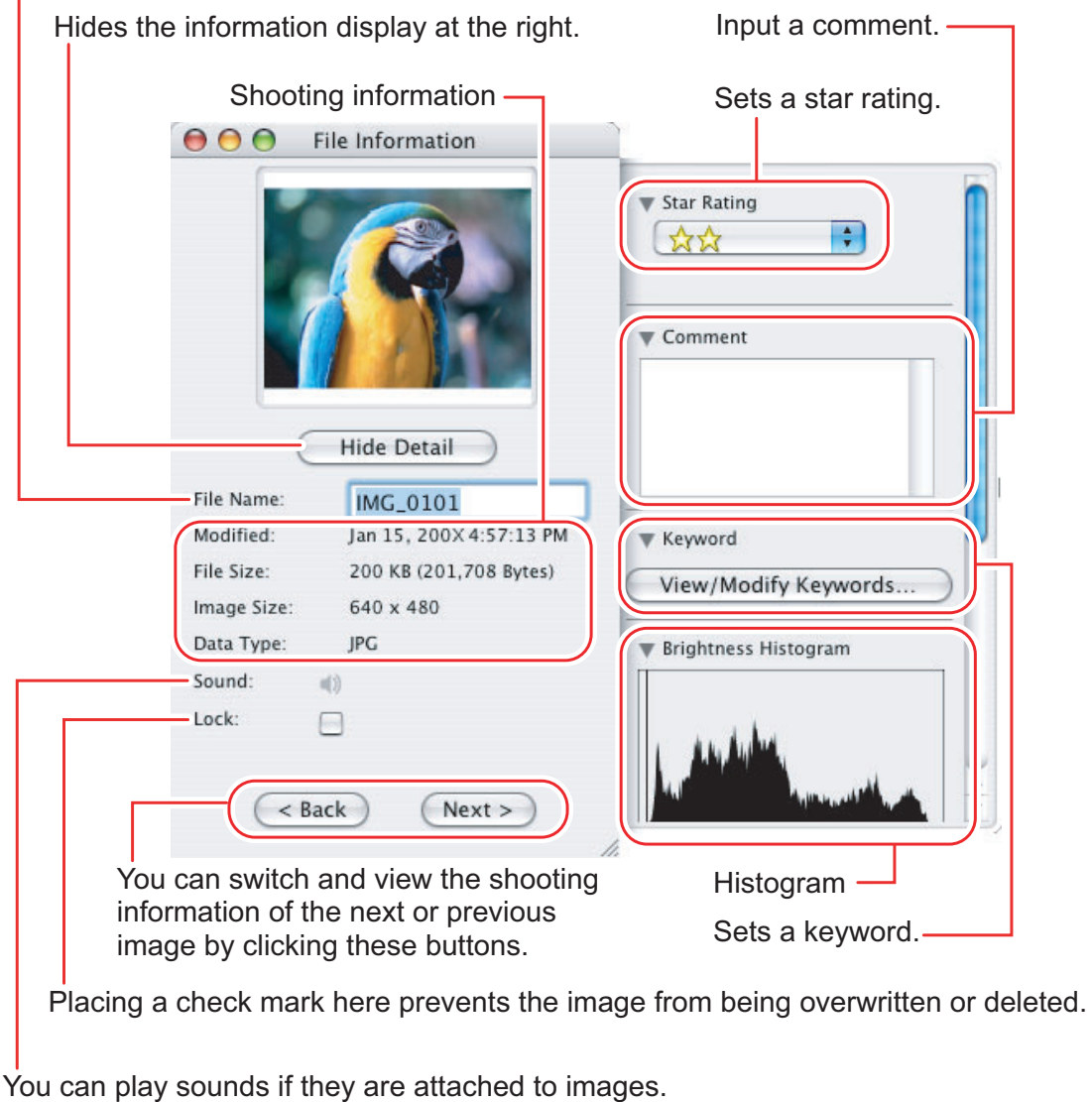
When you click on a thumbnail while pressing the [control] key on the keyboard, a context menu will appear. The context menu allows you to select several functions directly without using the menu bar located on top of the window.



## [File Information]

When the view mode is set to [List Mode], select [Get Info] from the [File] menu to display the following window.

You can rename files.



## 4 Image display control panel



1	<b>Filter Tool</b>	Allows you to select which still images to display according to the star rating. When you download the images, the star rating is set to two stars as a default. To change the star rating, refer to <i>Applying Star Rating</i> ( 49).
2	<b>Enlarge/Reduce</b>	Enlarges/Reduces the thumbnails in the Browser Window.
3	<b>Selecting Images</b>	Allows you to select all images and deselects images.
4	<b>Display Pattern</b>	Allows you to change the appearance of the Browser Window.

## 5 Control panel

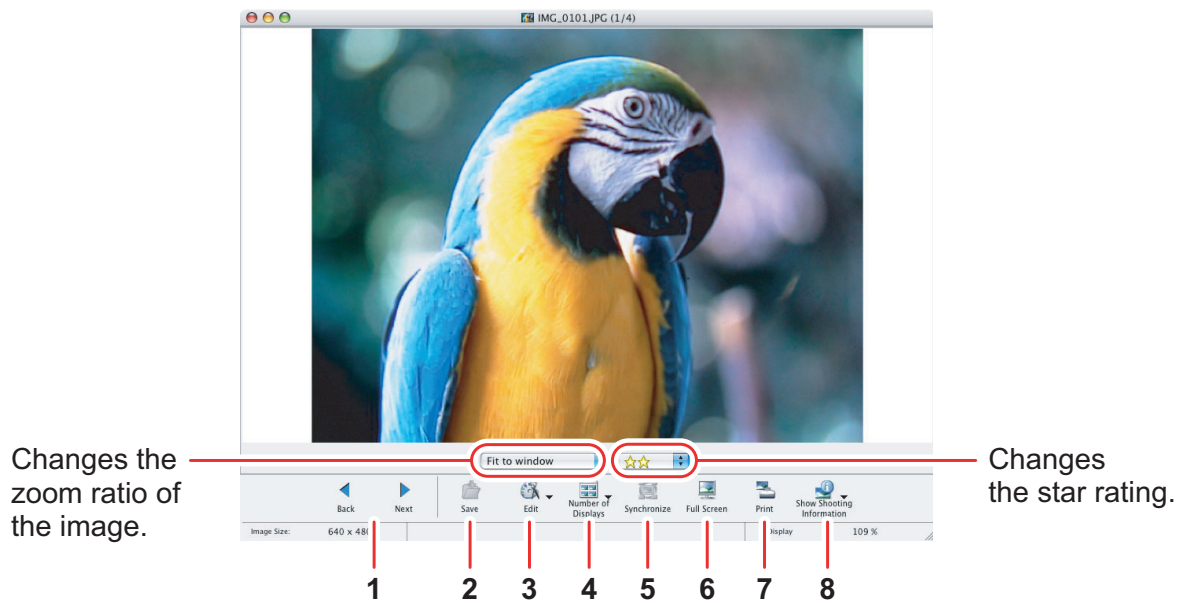


1	<b>Canon Camera</b>	Opens CameraWindow.
2	<b>View Image</b>	Displays a selected image in the [Image Viewer] window.
3	<b>SlideShow</b>	Displays still images in a slide show.
4	<b>Print &amp; Email</b>	After you download still images to a computer, use this to print them or to attach them to e-mail messages.
5	<b>Send to Trash</b>	Deletes the selected images.




## [Image Viewer] Window

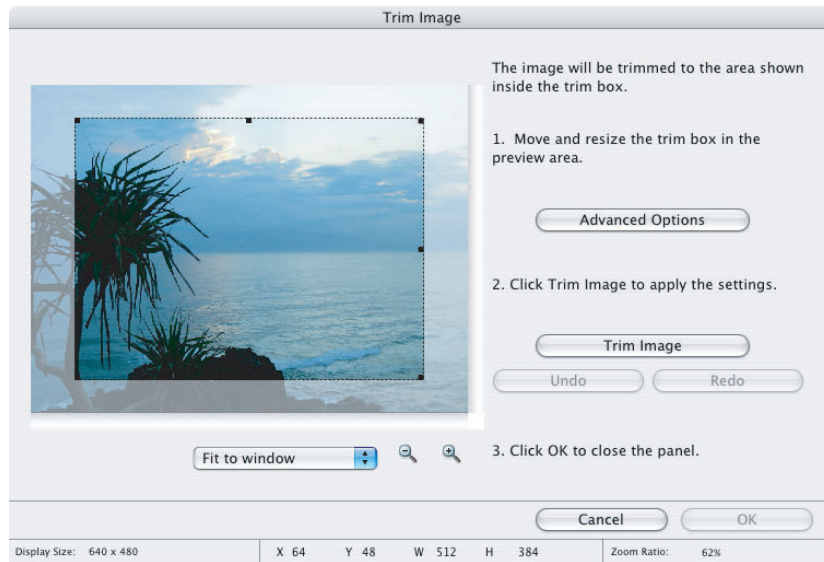
The [Image Viewer] window appears when you select an image and click [View Image] or double click an image.




1	<b>Back/Next</b>	Displays the previous/next image in the current folder.
2	<b>Save</b>	Allows saving the edited image.
3	<b>Edit</b>	Allows you to perform the following operations: red-eye correction, auto correct, color and brightness correction, sharpness adjustment, trimming, inserting text, or registering external image editing applications. Unable to use when the multiple images are selected.
4	<b>Number of Displays</b>	Allows you to display multiple images at the same time.
5	<b>Synchronize</b>	Synchronizes View functions across all displayed images.
6	<b>Full Screen</b>	Displays an image in full screen size. To return to Browser Window, click the full screen sized image or press any key.
7	<b>Print</b>	Prints the selected still image. Refer to <i>[Photo Print]</i> ( 43).
8	<b>Show Shooting Information</b>	The shooting information of the image will be displayed. [Show AF Frame] cannot be used for the images recorded by the camcorder.

## ■ [Trim Image] Window

Select [Trim Image] from the  icon located at the bottom of the [Image Viewer] window. Specify the area in the still image to crop and click [Trim Image] to trim the image.




## ■ [Color/Brightness Adjustment] Window

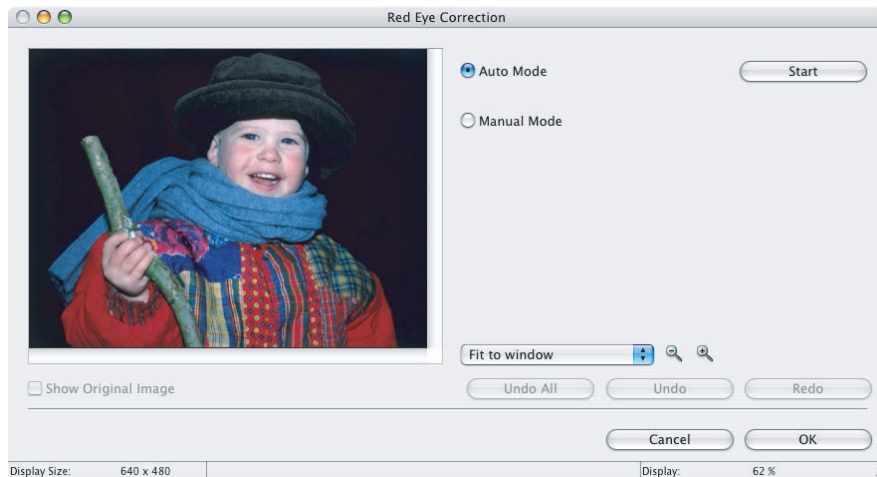
Select [Color/Brightness Adjustment] from the  icon located at the bottom of the [Image Viewer] window. Use this to change the image's properties by adjusting the RGB intensity, saturation and brightness.






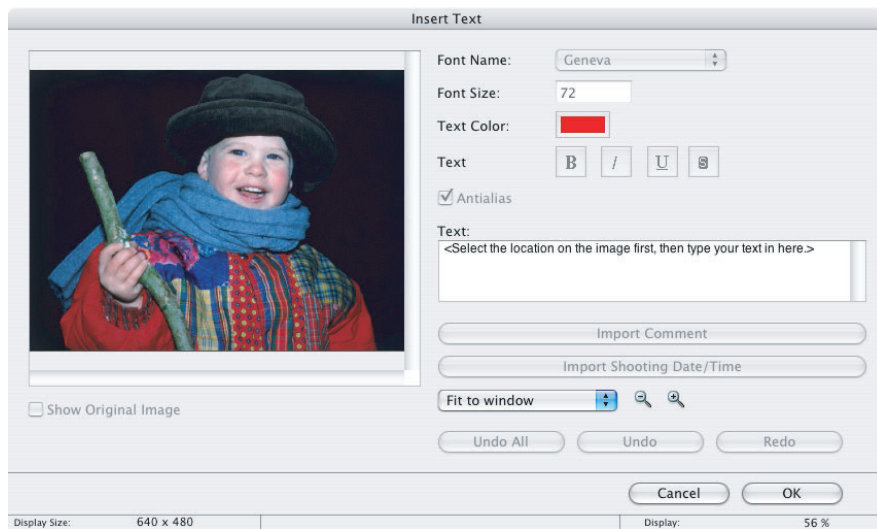
## ■ [Red Eye Correction] Window

Select [Red Eye Correction] from the  icon located at the bottom of the [Image Viewer] window. Use this to correct still images in which people's eyes appear red.




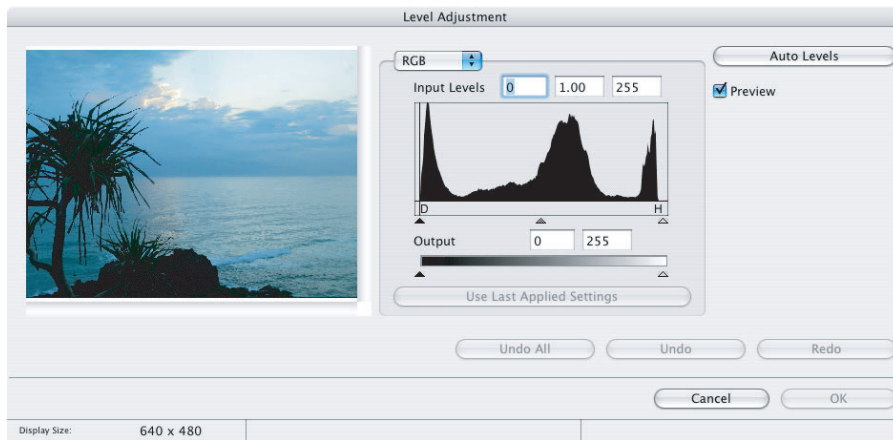
## ■ [Insert Text] Window

Select [Insert Text] from the  icon located at the bottom of the [Image Viewer] window. Use this to write text on still images.




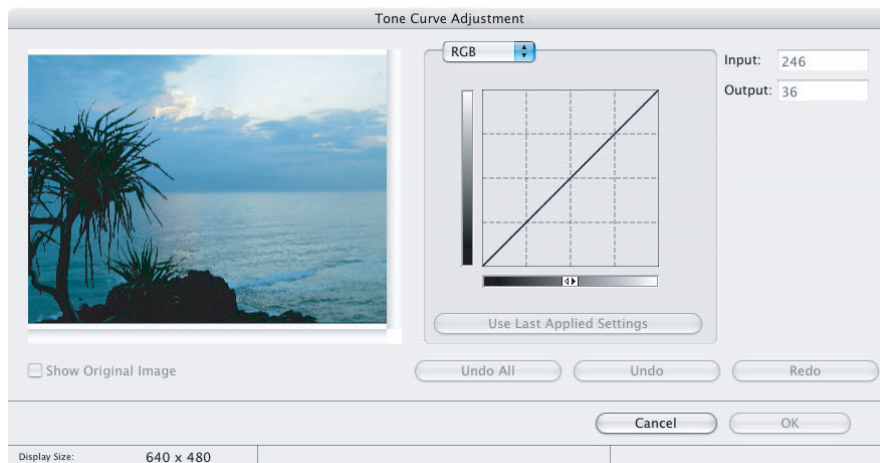
## ■ [Level Adjustment] Window

Select [Level Adjustment] from the  icon located at the bottom of the [Image Viewer] window. Use this to adjust the levels in a still image to change its appearance.




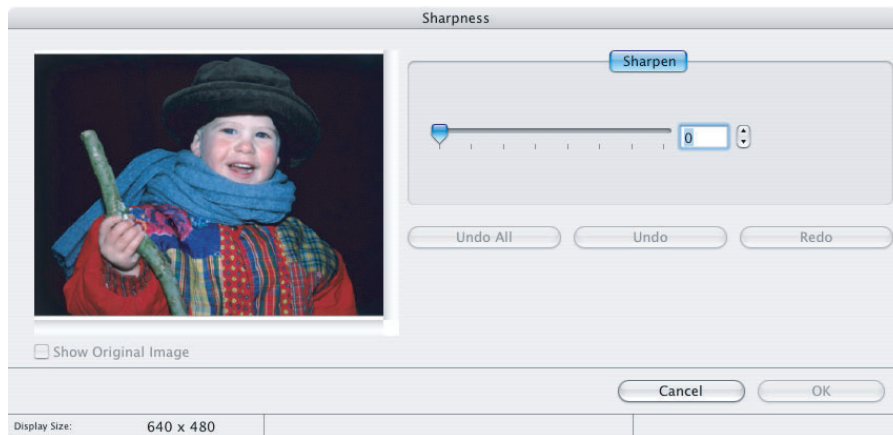
## ■ [Tone Curve Adjustment] Window

Select [Tone Curve Adjustment] from the  icon located at the bottom of the [Image Viewer] window. Use this to adjust the tone curve for a still image to change its appearance.




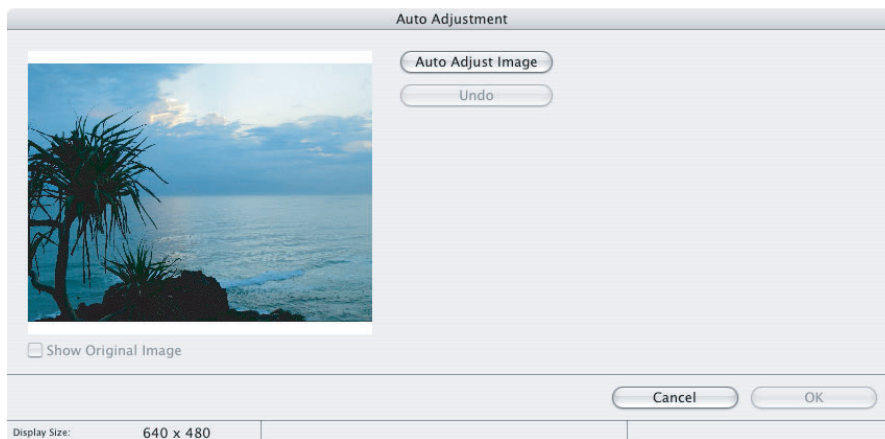
## ■ [Sharpness] Window

Select [Sharpness] from the  icon located at the bottom of the [Image Viewer] window. Use this to emphasize and clarify the outlines of people and objects.



## ■ [Auto Adjustment] Window

Select [Auto Adjustment] from the  icon located at the bottom of the [Image Viewer] window. Use this to automatically correct the color balance of the still image.



# Installing the Digital Video Software

---



Before you connect the camcorder to the computer with the USB cable for the first time, you must install the Digital Video Software.



Your digital video camcorder is equipped with the standard Picture Transfer Protocol (PTP). This protocol enables you to download still images by simply connecting the camcorder to a computer with the USB cable (using software such as iPhoto or Image Capture preinstalled on Mac OS X).

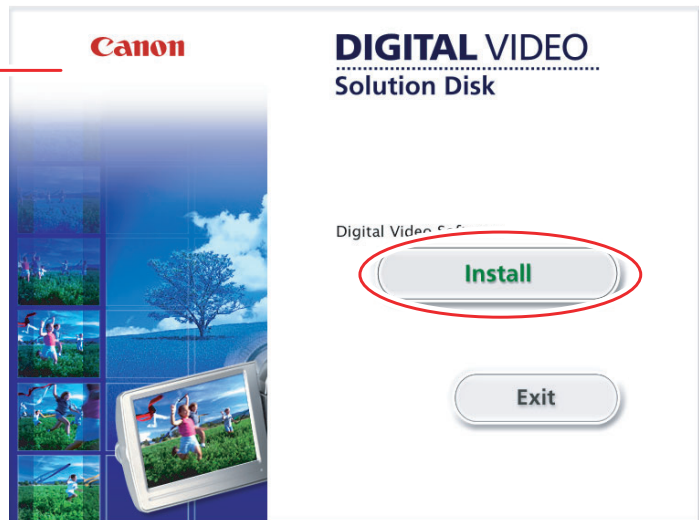
However, note that there are several limitations to downloading still images with this method.

- It may take a few minutes, after connecting the camcorder, until you can download still images.
- Still images protected on the camcorder may lose this setting once they are downloaded to the computer.
- When downloading the still images by Image Capture that comes with Mac OS, the Exif version may change to 2.1 and image information may be modified. Either install ImageBrowser to download the still images or use the following procedure.
  - 1) Connect the camcorder to the computer, and start Image Capture.
  - 2) Click [Options].
  - 3) Remove the checkmark from [Embed Colorsync profile] in the [Download Options] tab and click [OK].

- 
- 1 Close all programs that are running, and check that the camcorder is not connected to the computer.**
  - 2 Set the DIGITAL VIDEO Solution Disk in the computer's CD-ROM drive.**
  - 3 Double click the CD-ROM icon and the [Canon Digital Video Installer] icon.**
-

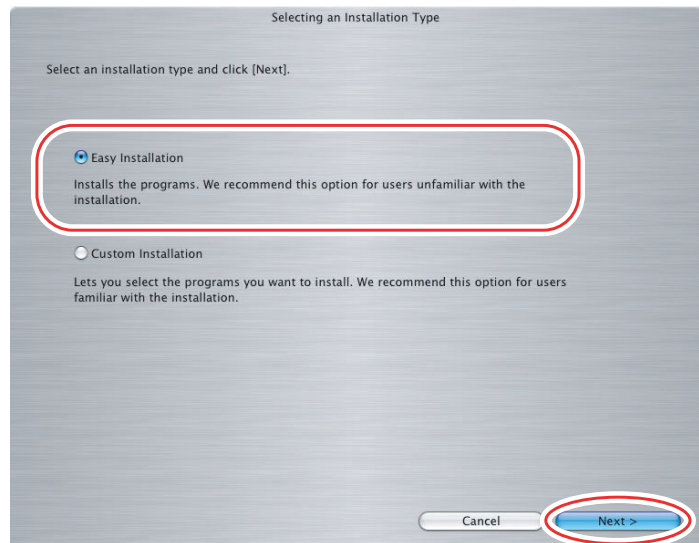
## 4 Click [Install] under Digital Video Software.

Installer Panel



## 5 Select [Easy Installation] and click [Next].

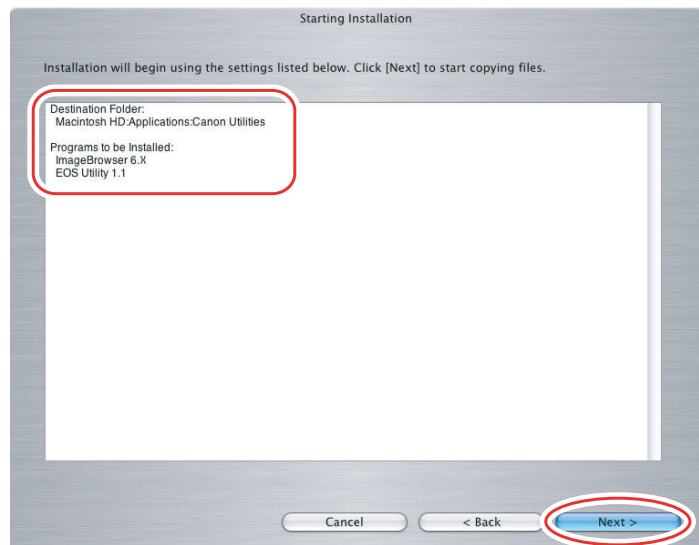
To install the software individually, select [Custom Installation].



When installing the software by selecting [Easy Installation], EOS Utility (software for downloading still images from the Canon EOS Digital SLR Cameras) will be installed. This software is used only for compatible Canon EOS Digital SLR Cameras, and the camcorder does not support this software.

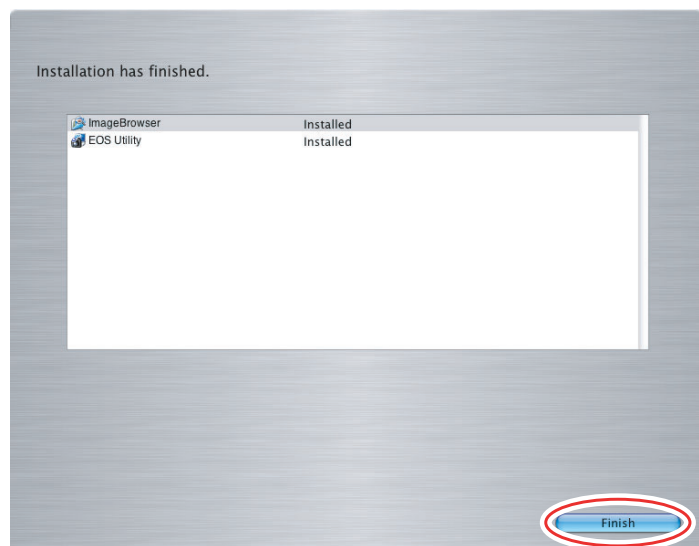
## 6 Read the license agreement and click [Agree] to accept the terms.

## 7 Review the installation settings and click [Next].



## 8 When the “Installation has finished.” message appears, click [Finish].

After the installation is complete, restart the computer as prompted.



## 9 Remove the DIGITAL VIDEO Solution Disk from the CD-ROM drive.

When installation is complete, remove the DIGITAL VIDEO Solution Disk before you connect the camcorder to the computer.

# Before Downloading Still Images

## Connecting the Camcorder to a Computer



- Be sure to install the Digital Video Software before you connect the camcorder to the computer.
- Make sure the camcorder is being powered using the power adapter before connecting it to a computer.
- Connect the USB cable directly to one of the computer's main USB ports. The interface may not function correctly if the camcorder is connected via a USB hub.
- The connection may not operate correctly if you are using other USB devices, excluding USB mice or keyboards, at the same time. If this occurs, disconnect the other devices from the computer and try reconnecting the camcorder.
- Do not connect two or more camcorders to the same computer via the USB interface. The connections may not operate correctly.
- **Never allow the computer to go into standby (sleep) mode while a camcorder is connected via the USB interface.**



- Refer to your computer manual for the location of the computer's USB ports.
- For details about changing settings on the camcorder and connecting the camcorder to the computer, see the camcorder's instruction manual.

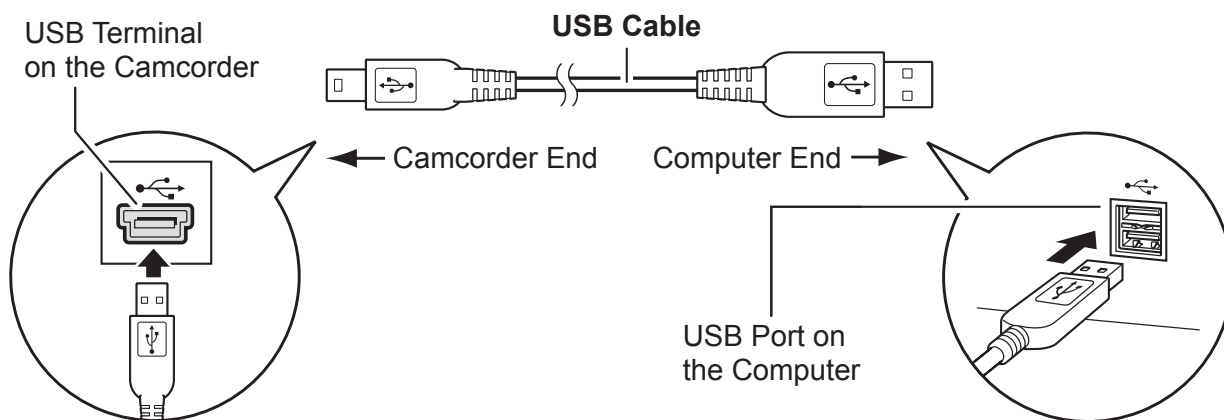
### ■ Settings on the camcorder

Before connecting the camcorder to the computer, change the following camcorder settings in advance.

- In the still images index screen, select which still images to play back (built-in hard disk/memory or memory card).
- In the [SYSTEM SETUP] menu, set [USB SETTING] to one of the following options.
  - [PC/PRINTER]:  
To simply connect the camcorder to the computer without further operations.
  - [CONNECT&SET]:  
Select [PC/PRINTER] on the camcorder every time you connect it to a computer.

## ■ Connecting the camcorder

- 1** Connect the compact power adapter to the camcorder.
- 2** If downloading images from a memory card, insert the memory card into the camcorder.
- 3** Set the camcorder to still image playback mode.  
Wait until the ACCESS indicator stops flashing.
- 4** Attach the supplied USB cable to the computer's USB port and the camcorder's USB Terminal.





# Downloading Still Images

Below explains the procedure for connecting a camcorder to a computer using the USB cable. For connecting a card reader/writer, see *Using a Card Reader/Writer* (📖 34).



- You cannot connect the camcorder to a computer if the built-in hard disk/memory or the memory card contains 1,800 images or more. In such case, copy the images in the built-in hard disk/memory to a memory card and then use a card reader/writer to download the images to the computer.
- You may not be able to download images with ImageBrowser or OS standard software (depending on the computer you are using and the installed OS) if the built-in hard disk/memory or the memory card contains more than approximately 1000 images. In such case, copy the images in the built-in hard disk/memory to a memory card and then use a card reader/writer to download the images to the computer.
- Observe the following precautions when the camcorder's access indicator is flashing. Failure to do so may cause data to become corrupted.
  - Do not remove the memory card or detach the USB cable.
  - Do not turn off the camcorder or the computer.
  - Do not change the position of the mode dial.
- The still images you recorded and/or downloaded to the hard disk are important original data files. Create a copy of the file first before working on it on your computer.

# Using the Computer to Download Still Images (CameraWindow)

You can select a downloading method in the Camera Control window.

## ■ Auto-downloading

### 1 Connect the camcorder to the computer (📖 23).

- The Camera Control window will be displayed. If it does not appear automatically, click the [CameraWindow] icon in the Dock (the bar at the bottom of the desktop).
- If you do not wish the Camera Control window to open automatically when you connect the camcorder, click the [File] menu and clear the check mark from the [Displays this screen when the camera is connected].

### 2 Click [Starts to download images].

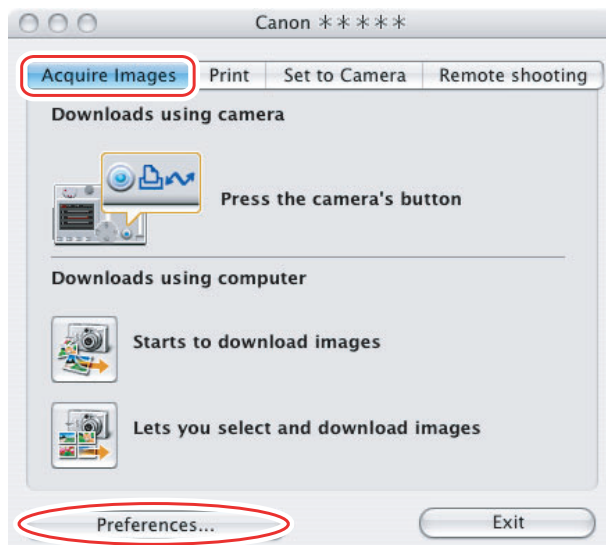
Click [Exit] to close the Camera Control window after downloading images.



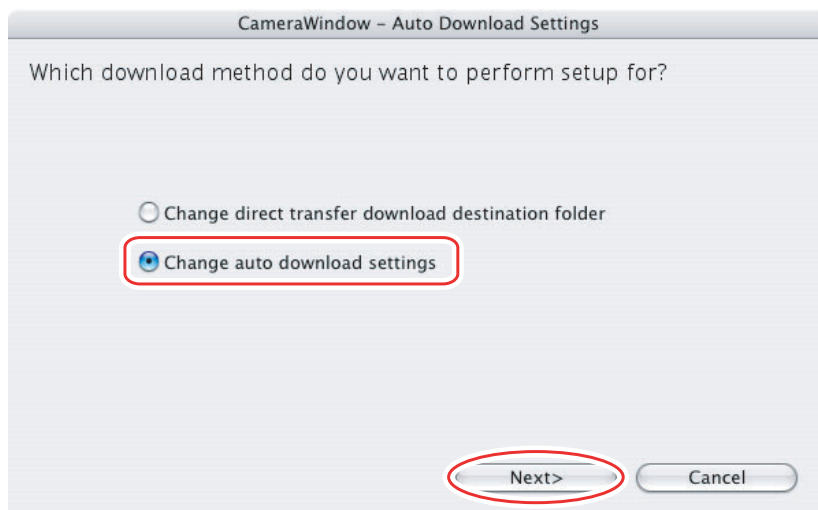
## ■ Applying Auto-downloading Settings

This task allows you to apply auto-downloading settings. You can specify the types of still images and the destination folder.

- 1** In the Camera Control window, click the [Acquire Images] tab and click [Preferences].

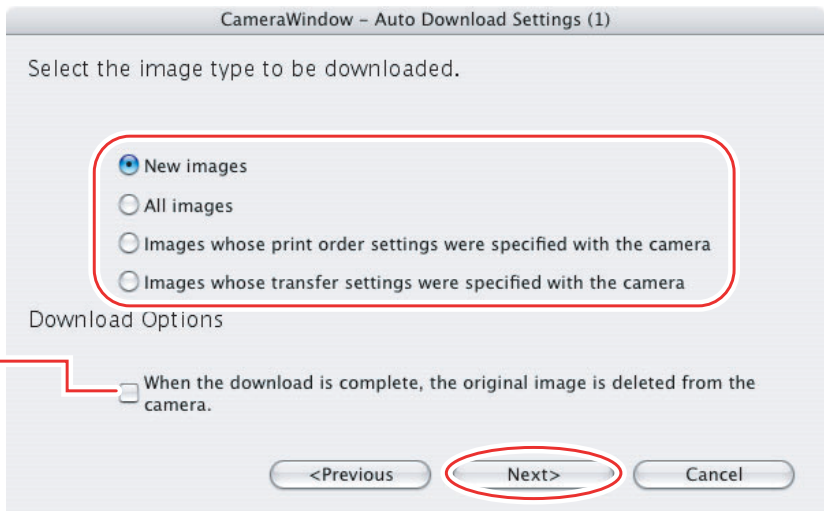


- 2** Select [Change auto download settings] and click [Next].



### 3 Select the image type to be downloaded and click [Next].

Place a check mark here if you wish the original image to be deleted after downloading.

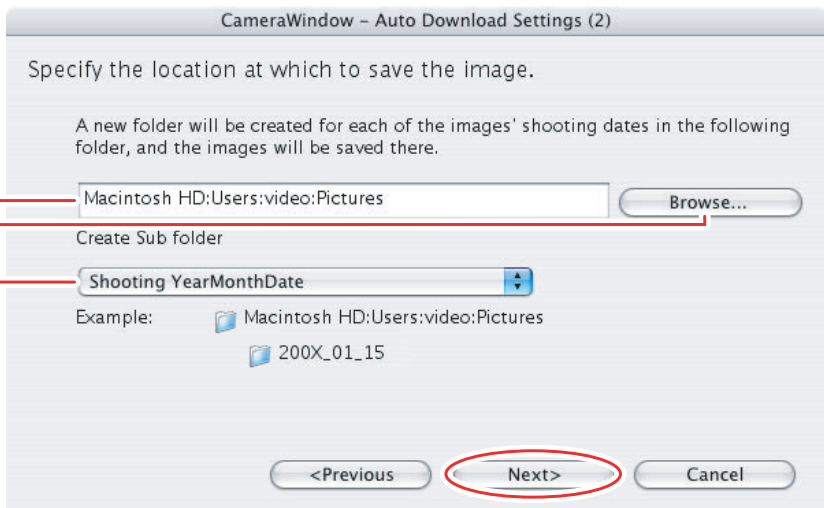


### 4 Specify the destination folder settings and click [Next].

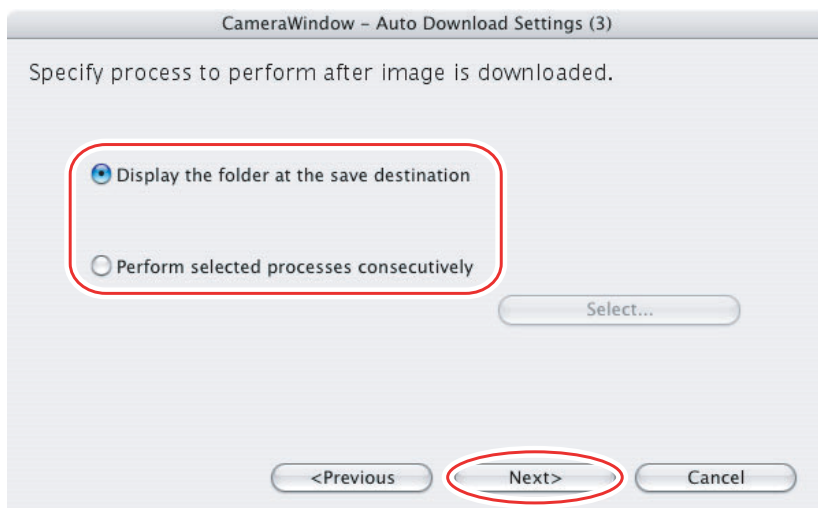
Destination Folder

Click this button to browse where you want to save the images.

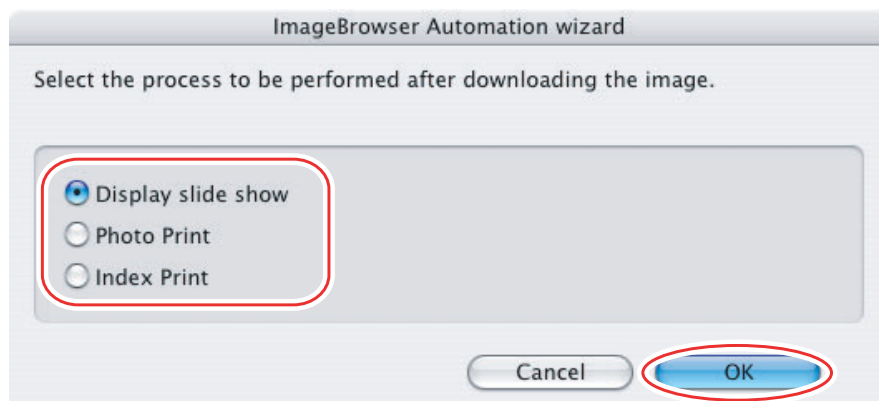
Select to specify the name of the subfolder.



## 5 Specify a process to perform after the image is downloaded and click [Next].

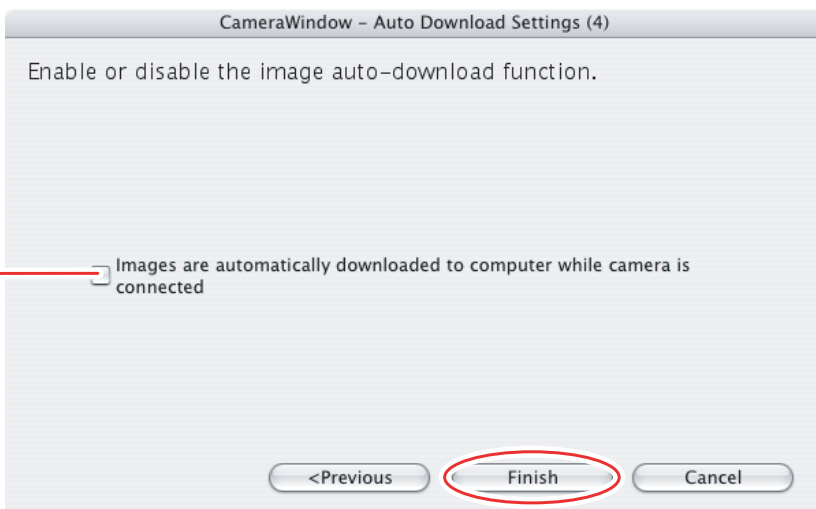


The window below will be displayed when you select [Perform selected processes consecutively] (you can redisplay the window by clicking [Select]). Select a process to perform after the image is downloaded, and click [OK].



## 6 Click [Finish].

Placing a check mark here makes images in the camcorder to be automatically downloaded when the camcorder is connected.



## ■ Downloading the Selected Still Images from the CameraWindow

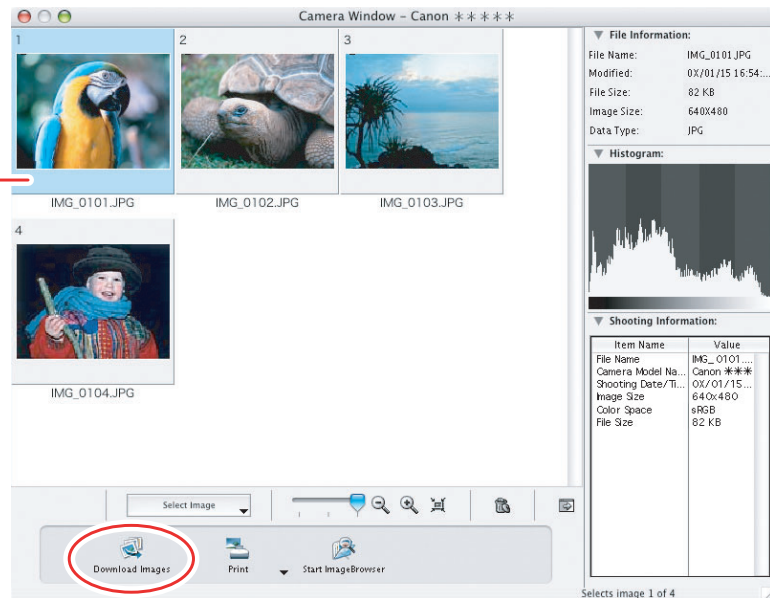
### 1 Click [Lets you select and download images].



### 2 Select images you wish to download and click [Download Images].

- Clicking on 2 images while holding down the [option] + [shift] key selects also all images between the 2 images.
- Clicking on different images while holding down the [shift] key selects multiple images.

A blue frame appears around the selected image.

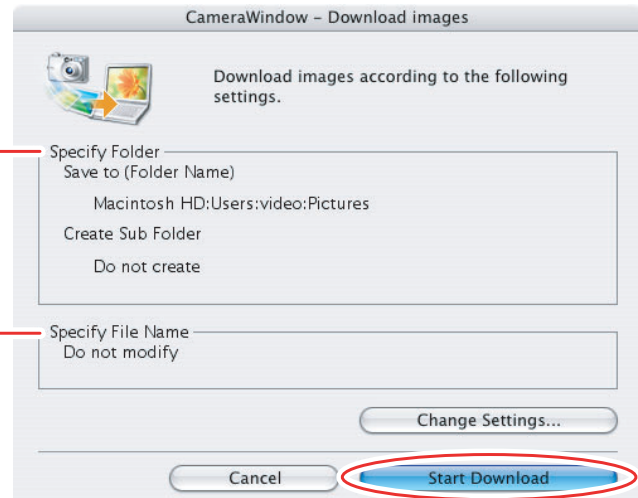


### 3 Confirm the settings and click [Start Download].

- ImageBrowser starts, and Browser Window appears.

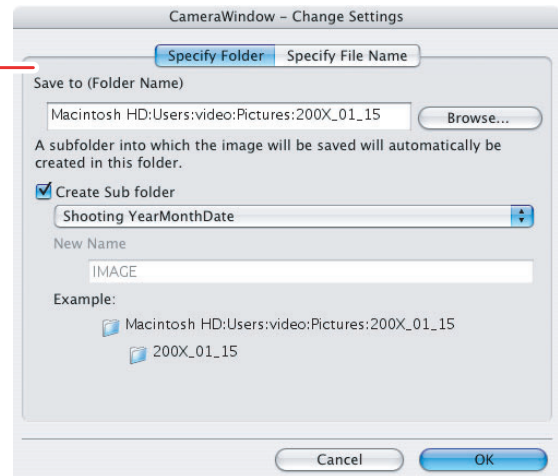
Settings for the folder and the subfolder for downloaded images

Settings for the file prefix and the consecutive numbers



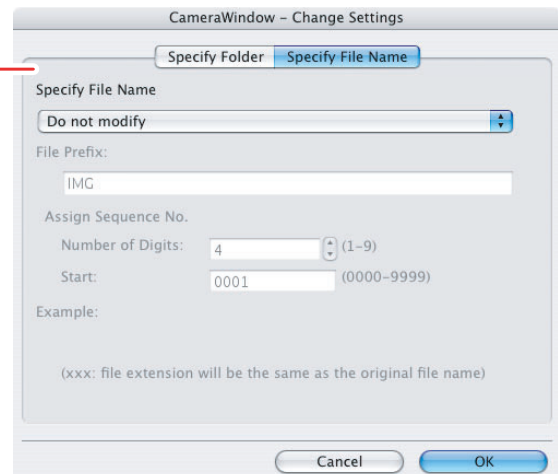
- To make changes, click [Change Settings].  
[Specify Folder] Tab

Specify the settings of the folder and subfolder.



[Specify File Name] Tab

Specify the file name with which to save the images.

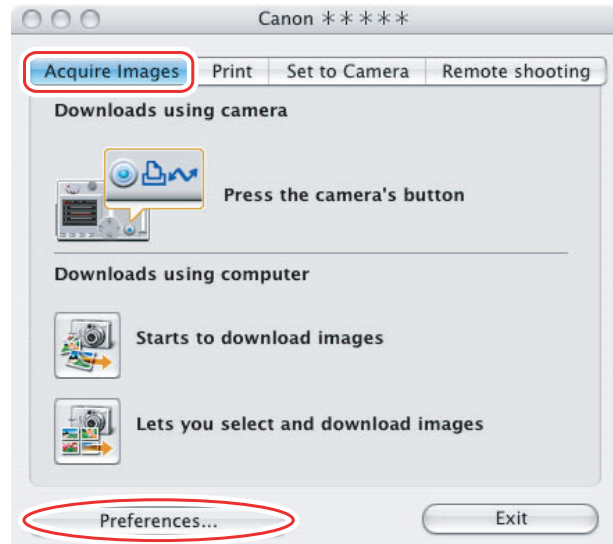


## Using the Camcorder to Download Still Images (Direct Transfer Function)

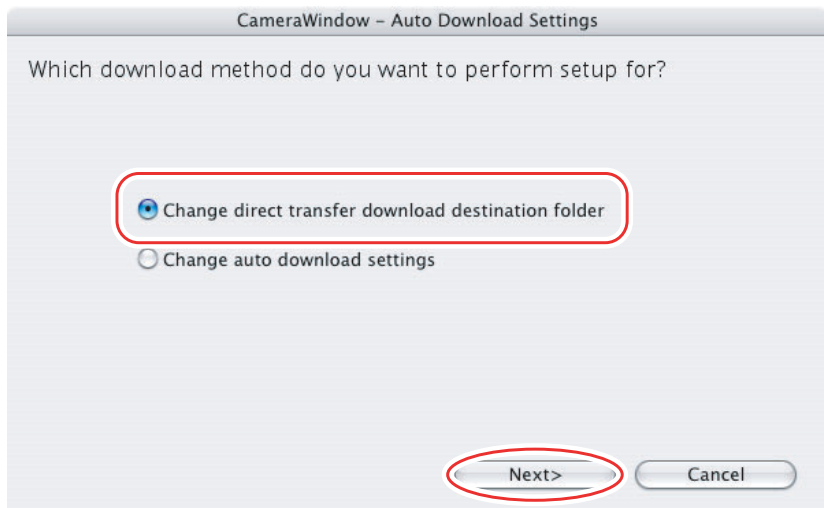
If your camcorder supports the Direct Transfer function, you can use the camcorder to download images.

### ■ Setting the Direct Transfer Download Destination Folder

- 1 Click the [Acquire Images] tab and click [Preferences].**  
Click [Exit] to close the Camera Control window.

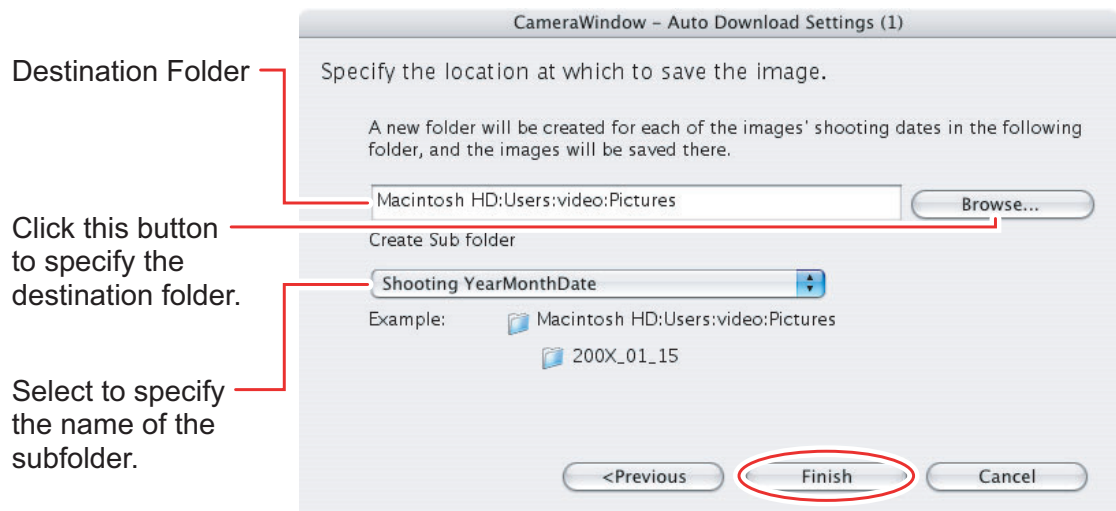


- 2 Select [Change direct transfer download destination folder] and click [Next].**






### 3 Specify the destination folder settings and click [Finish].



## ■ Direct Transfer

### 1 Select a transfer option on the camcorder screen and press the button.

- See your camcorder instruction manual for how to set and operate the camcorder to transfer images.
- The  button cannot be used when it is not lighted.

## Using a Card Reader/Writer

Select a download method in the image download window.

The basic operations are the same as when you connect the camcorder to the computer. Follow the procedure below to open the CameraWindow. For instructions on how to connect the card reader/writer, refer to its manual.

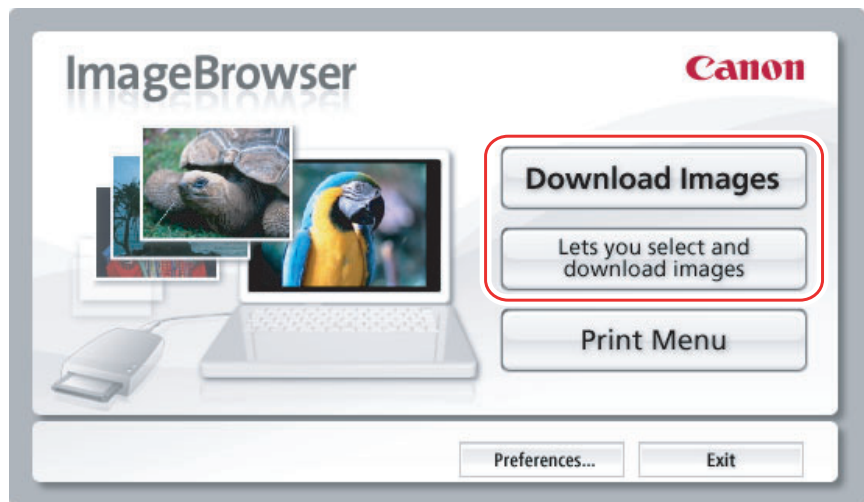


If you are using a camcorder that supports miniSD cards but your card reader/writer does not support them, please purchase an appropriate adapter for your card. If you are using SDHC cards, you need to use a card reader/writer compatible with SDHC cards.

**1 Insert a memory card containing images recorded with the camcorder into the card reader/writer and connect it to the computer.**

**2 Select a method to download the images.**

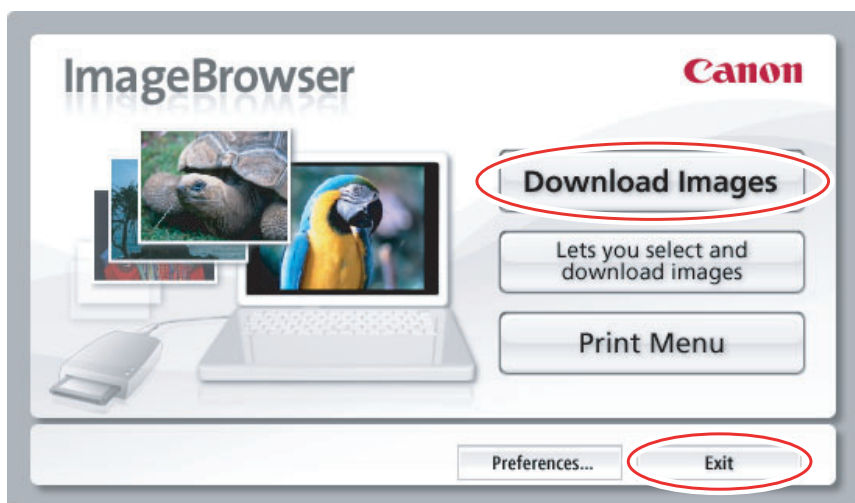
- [Download Images]: A progress bar will be displayed and images will be downloaded to the computer, and ImageBrowser starts. To apply auto-downloading settings, refer to *Applying Auto-downloading Settings* ( 35).
- [Lets you select and download images]: The ImageBrowser opens, displaying the still images on the memory card as thumbnails (small images).



## ■ Auto-downloading

### 1 Click [Download Images].

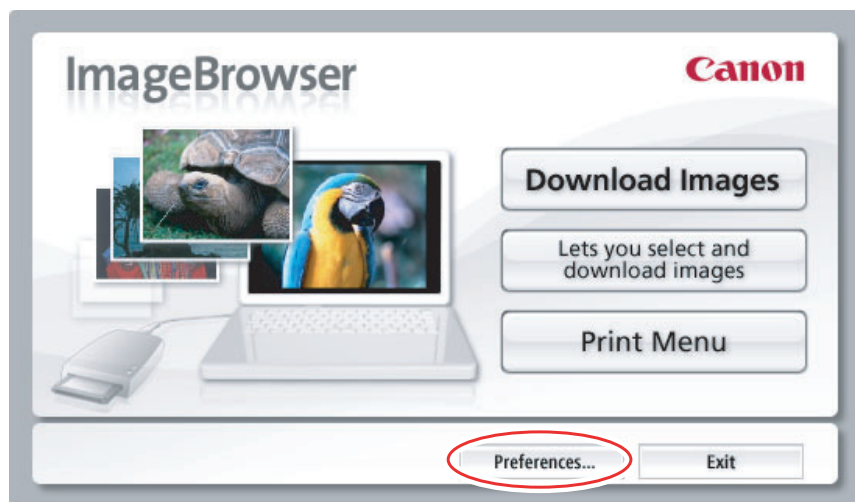
Click [Exit] to close the window after downloading images.



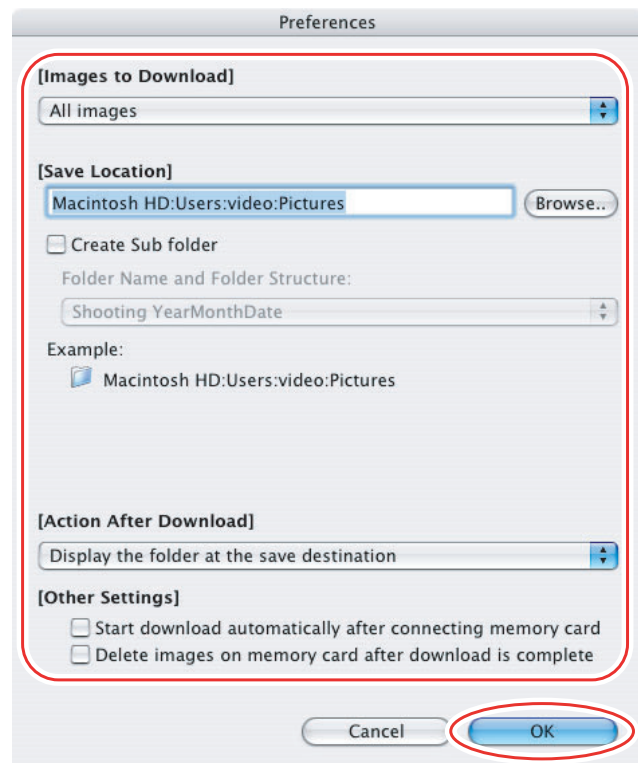
## ■ Applying Auto-downloading Settings

This task allows you to apply auto-downloading settings. You can specify the types of still images and the destination folder.

### 1 Click [Preferences].

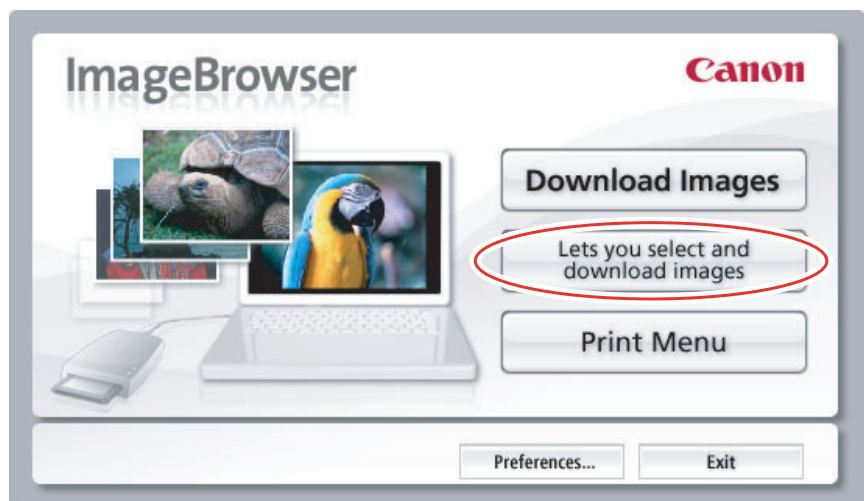


## 2 Configure the settings and click [OK].



## ■ Downloading the Selected Still Images from the ImageBrowser

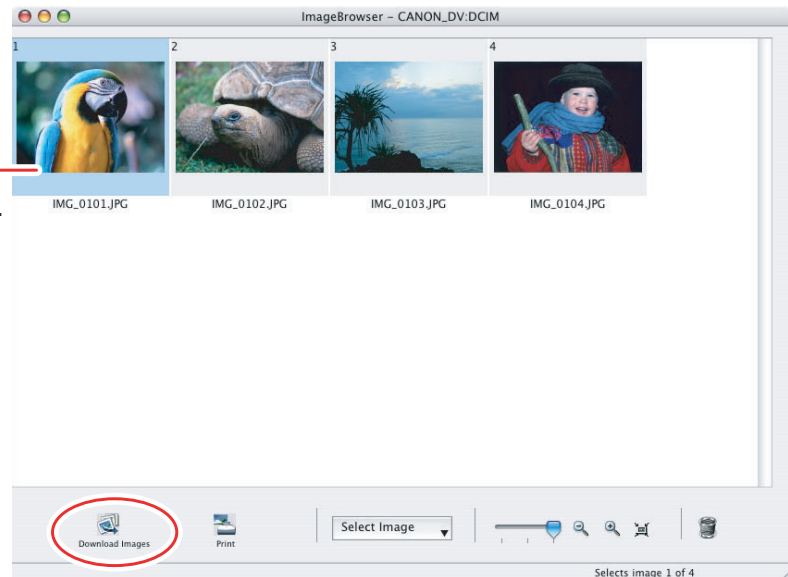
### 1 Click [Lets you select and download images].



## 2 Select images you wish to download and click [Download Images].

- Clicking on 2 images while holding down the [option] + [shift] key selects also all images between the 2 images.
- Clicking on different images while holding down the [shift] key selects multiple images.

A blue frame appears around the selected image.



# Printing Still Images

## Printing Still Images without Downloading Them

This section explains how to print still images by connecting the camcorder to the computer. The steps are basically the same when using a card reader/writer. You can select one of the following 4 methods to print still images directly from the camcorder, without downloading images to the computer.

- [Print All Photos]
  - Prints all still images, one image per page.
- [Print Contact Sheet with All Photos]
  - Prints all still images as an index (rows of images with file names and image information).
- [Print according to DPOF settings]
  - Prints according to the DPOF print settings set by the camcorder.
- [Select image and print]
  - A list of the still images will be displayed, and you can select the images you wish to print.

---

**1** Connect the camcorder to the computer. (📖 23)

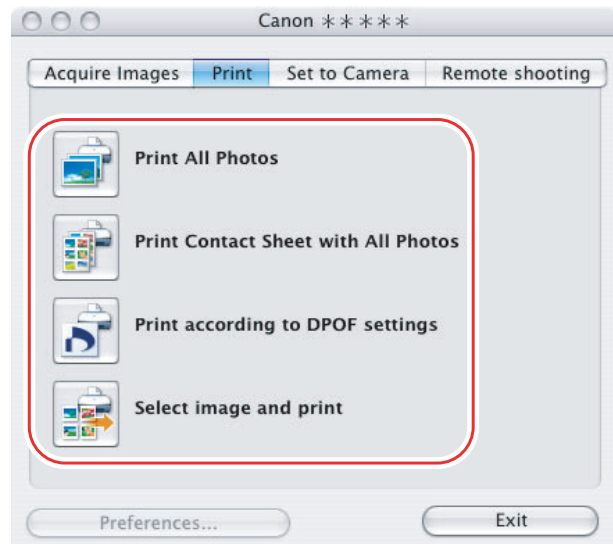
---

**2** Click the [Print] tab in the Camera Control window.

---



### 3 Click on one of the 4 printing methods.



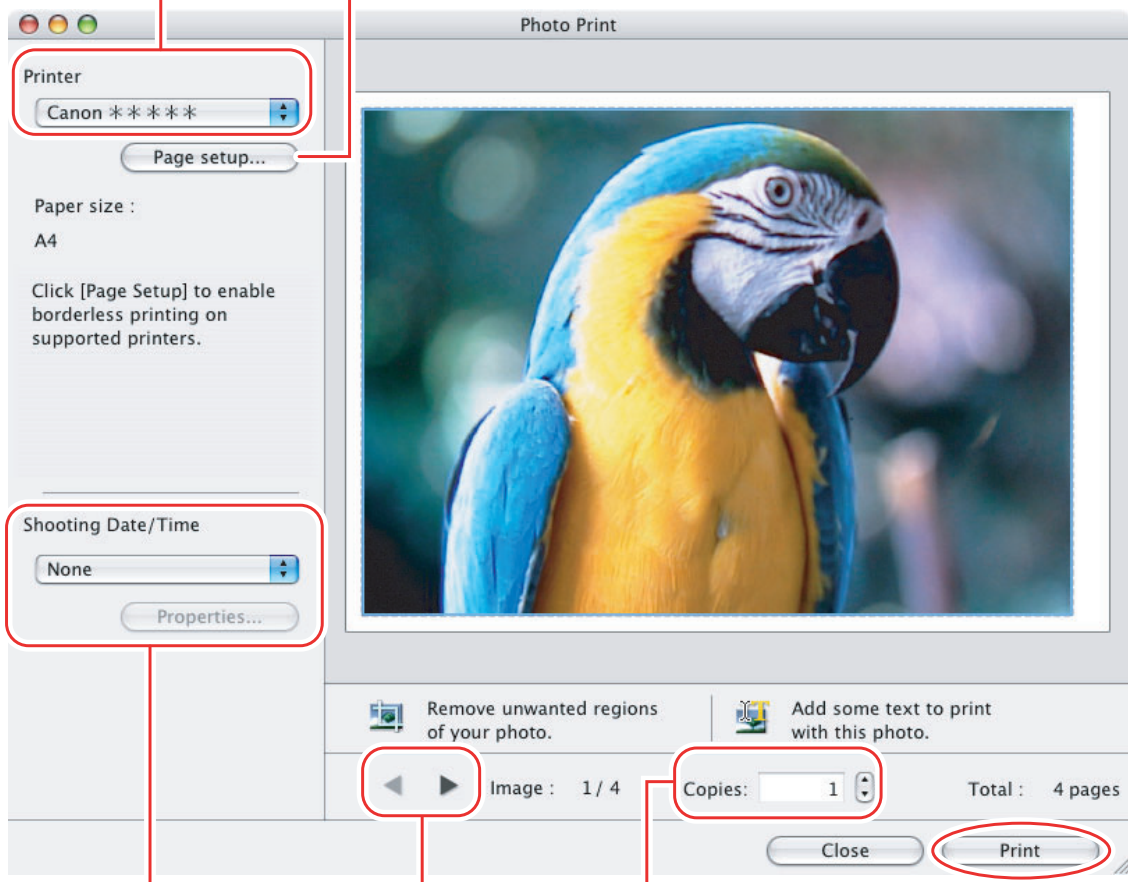
### 4 Specify the print settings and click [Print].

The window varies depending on the selected printing method in step 3.

## When you have selected [Print All Photos]:

Selects the printer.

Sets the paper size settings.



Sets the shooting date/time imprint and color settings.

Sets the number of print copies of the displayed image.

Click this button to switch between still images if multiple images are selected.

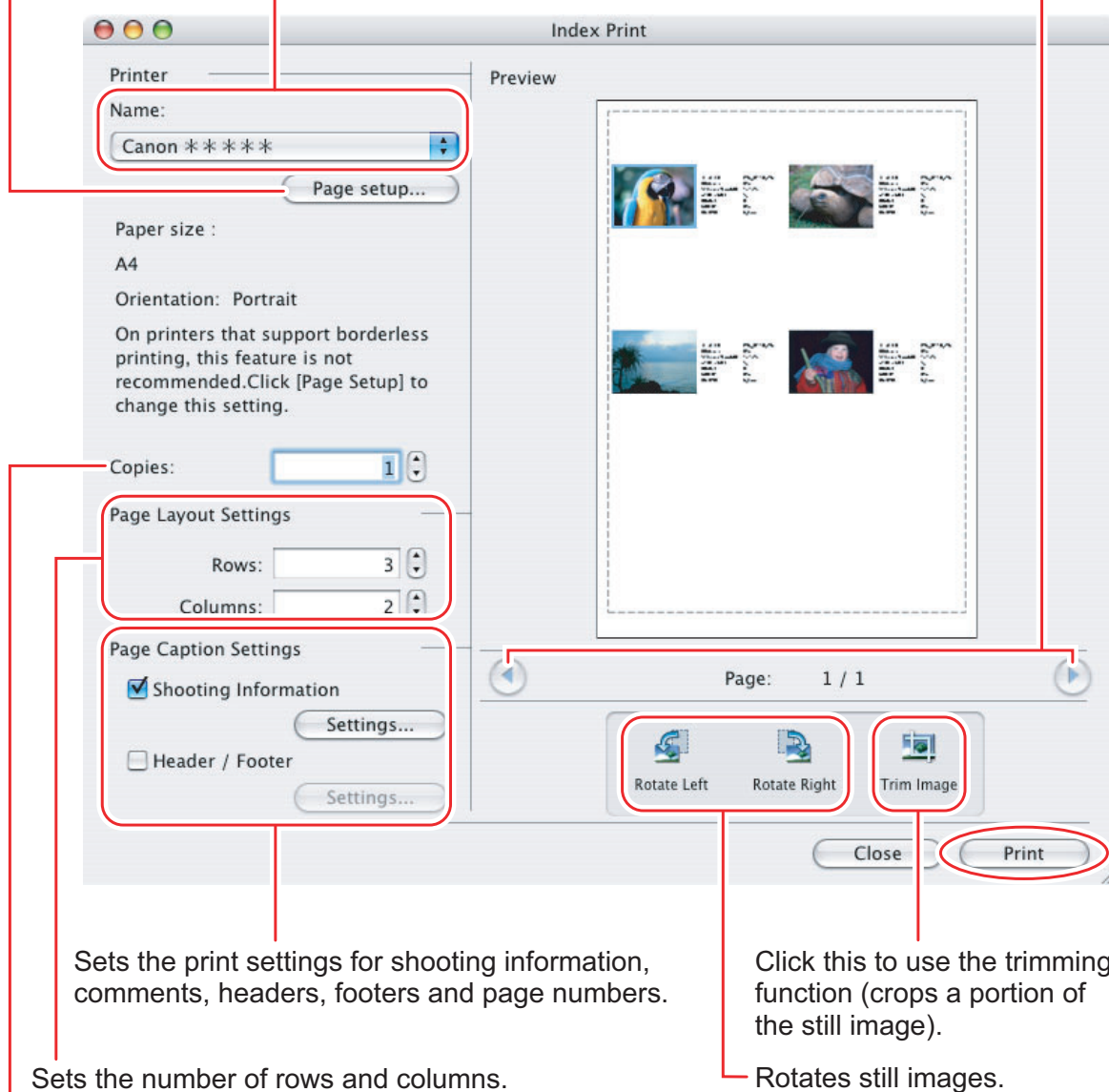


## When you have selected [Print Contact Sheet with All Photos]:

Sets the printer and paper size settings.

Selects the printer.

Click these buttons to switch between pages.



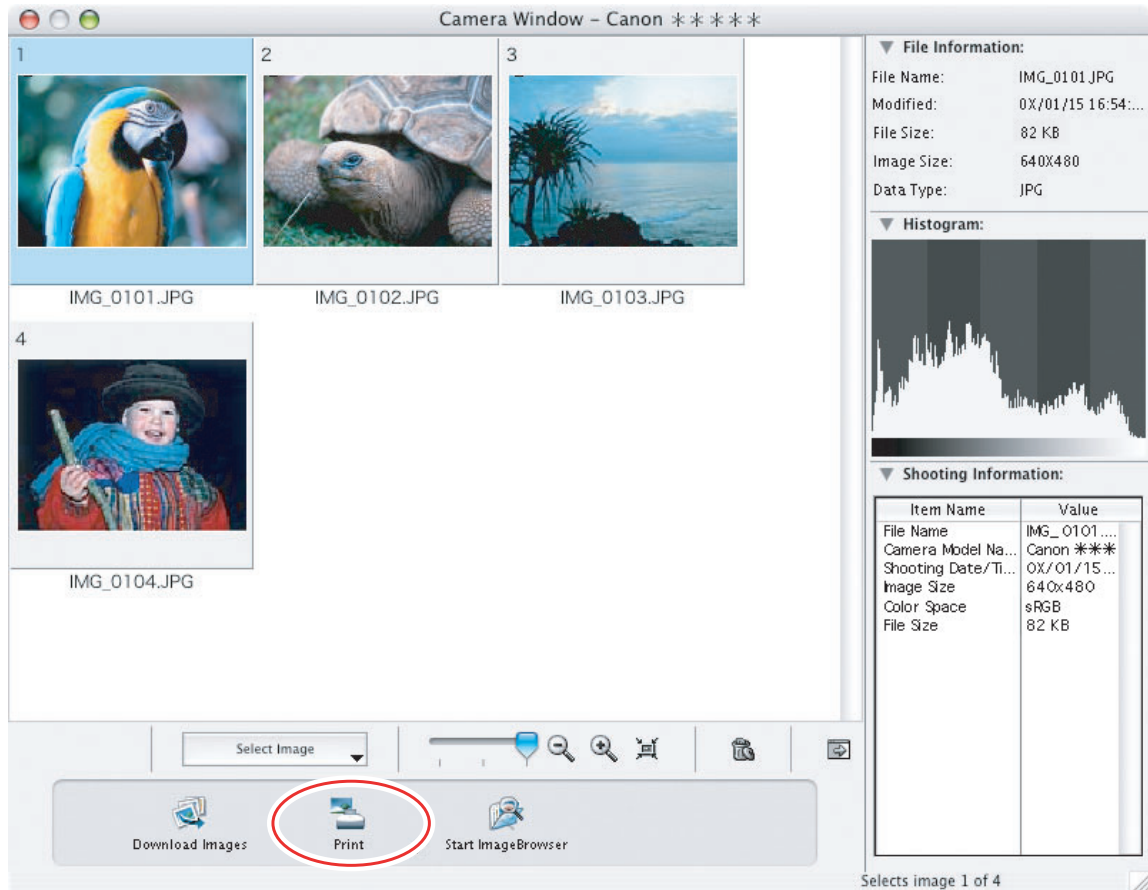
Sets the number of print copies of the contact sheets.

## When you have selected [Print according to DPOF settings]:

- The selected still images will be printed according to the number of copies set with the camcorder. The same window described in the previous section *When you have selected [Print All Photos]:* ( 40 ) will be displayed.

### When you have selected [Select image and print]:

- If you selected [Select image and print], the following window will be displayed. Select still images you wish to print, and click [Print]. If you selected [Contact Sheet Print], the same window described in the previous section *When you have selected [Print Contact Sheet with All Photos]:* (📖 41) will be displayed. If you selected [One Photo Per Page Print], the same window described in the previous section *When you have selected [Print All Photos]:* (📖 40) will be displayed instead. Set the print settings and print the still images.



**5** When the print window opens, click [Print].

**6** When the printing finishes, click 🛑 to close the window.

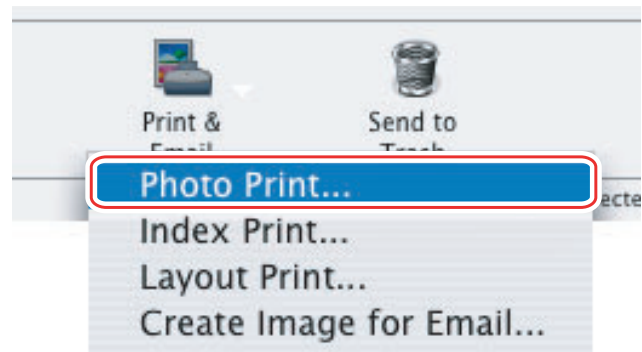
## Printing Still Images Already Downloaded to the Computer

You can select one of the following 3 methods to print still images downloaded to the computer.

- [Photo Print]
  - Prints one still image per page.
- [Index Print]
  - Prints selected images in rows with file names and image information.
- [Layout Print]
  - Allows you to lay out the selected still images in special arrangements and add text and decorations, printing them as one page in a fancy album.

### ■ [Photo Print]

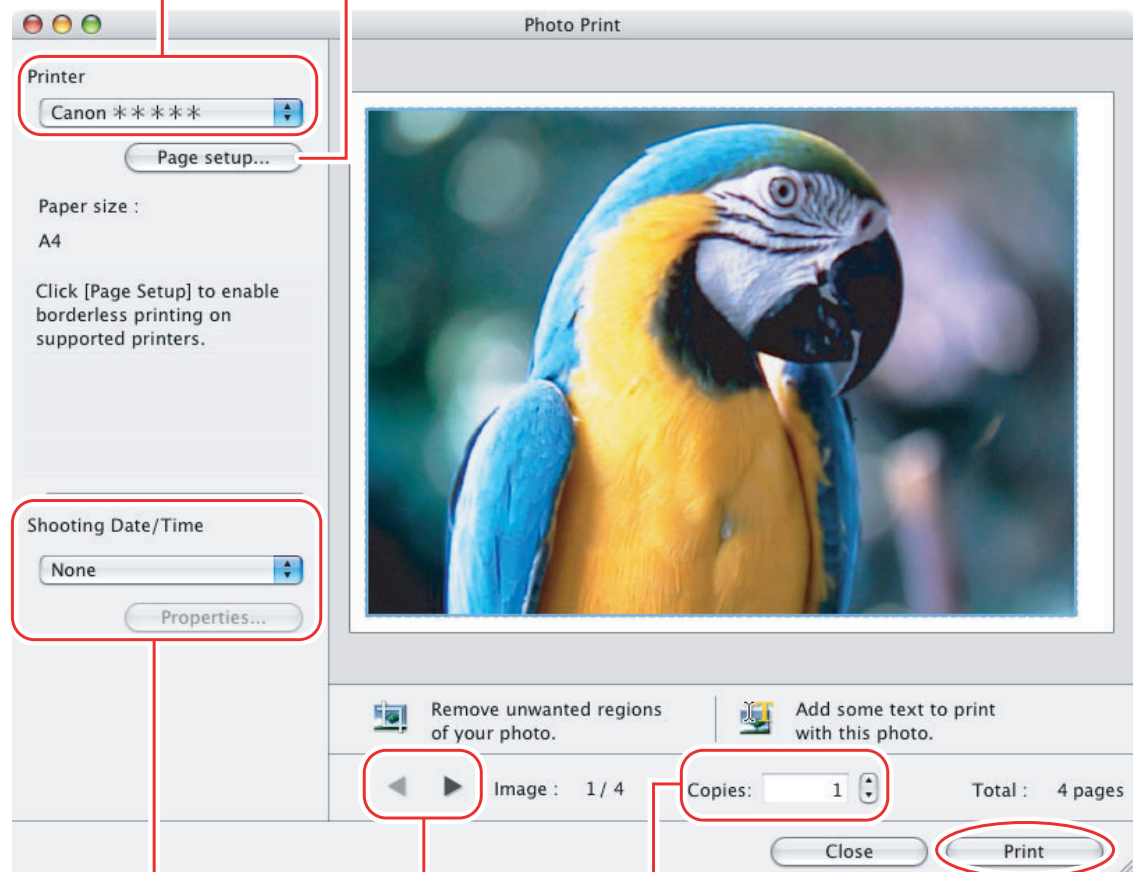
- 1** Select the still images you wish to print and click [Print & Email] ► [Photo Print] from the displayed menu.



## 2 Specify the print settings and click [Print].

Selects the printer.


Sets the paper settings.

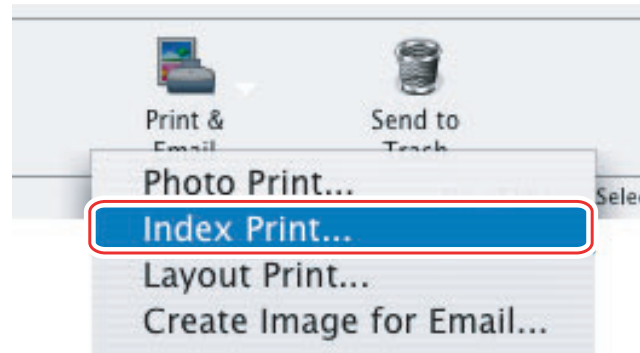


Sets the shooting date/time imprint and color settings.

Sets the number of print copies of the displayed image.

Click this button to switch between still images if multiple images are selected.

- 3** When the print window opens, click [Print].
  - 4** When the printing finishes, click  to close the window.
- [Index Print]
- 1** Select still images you wish to print and click [Print & Email]  
▶ [Index Print] from the displayed menu.



## 2 Specify the print settings and click [Print].

Sets the paper size and orientation.

The screenshot shows the 'Index Print' dialog box with various settings and a preview. Red lines and boxes highlight specific areas with annotations:

- Printer:** A red box around the 'Name' dropdown menu, which shows 'Canon \* \* \* \* \*'. An annotation 'Selects the printer.' points to it.
- Page Setup:** A red box around the 'Page setup...' button.
- Paper size:** An annotation 'Sets the paper size and orientation.' points to the 'Paper size' and 'Orientation' fields.
- Copies:** A red box around the 'Copies' field, which is set to '1'. An annotation 'Sets the number of print copies of the contact sheets.' points to it.
- Page Layout Settings:** A red box around the 'Rows' and 'Columns' fields. 'Rows' is set to '3' and 'Columns' is set to '2'. An annotation 'Sets the number of rows and columns.' points to it.
- Page Caption Settings:** A red box around the 'Shooting Information' checkbox (checked) and the 'Header / Footer' checkbox (unchecked). An annotation 'Sets the print settings for shooting information, comments, headers, footers and page numbers.' points to it.
- Preview:** A red box around the preview area showing a contact sheet of four images. An annotation 'Click these buttons to switch between pages.' points to the left and right navigation arrows.
- Page:** A red box around the 'Page: 1 / 1' indicator.
- Rotate Left:** A red box around the 'Rotate Left' button. An annotation 'Rotates still images.' points to it.
- Rotate Right:** A red box around the 'Rotate Right' button.
- Trim Image:** A red box around the 'Trim Image' button. An annotation 'Click this to use the trimming function (crops a portion of the still image).' points to it.
- Close:** A red box around the 'Close' button.
- Print:** A red box around the 'Print' button.

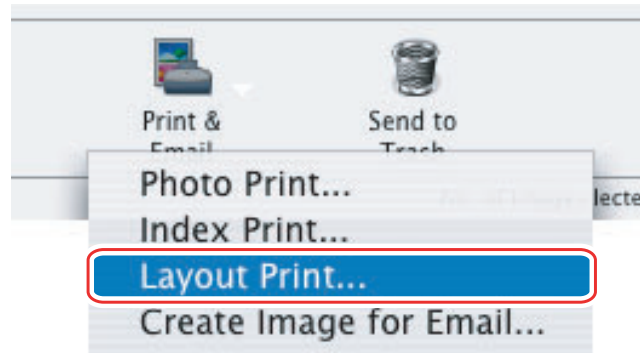
## 3 When the print window opens, click [Print].

## 4 When the printing finishes, click to close the window.

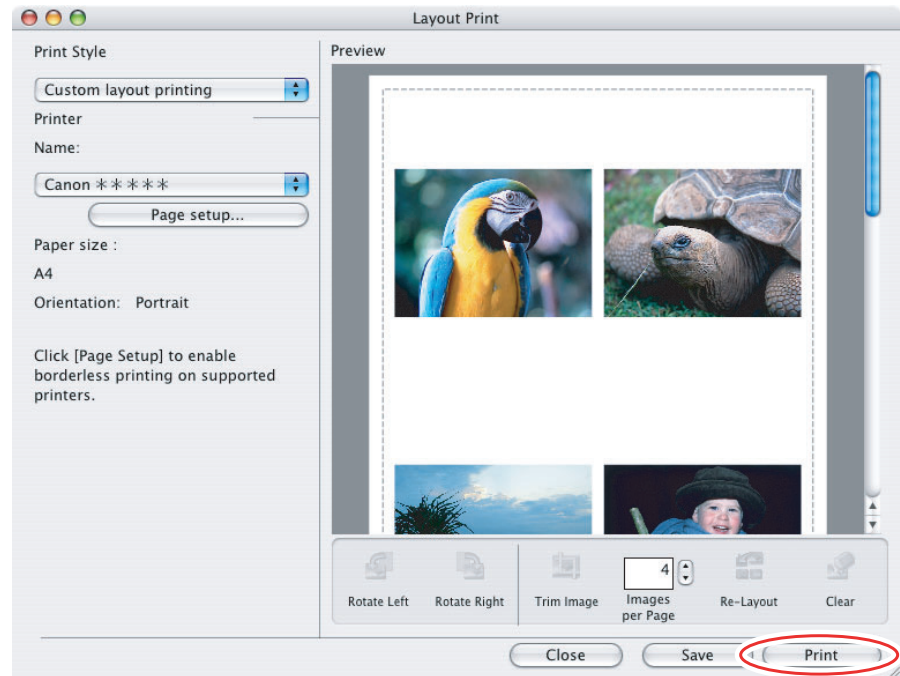
## ■ [Layout Print]


- You can select one of the following 3 layout print methods.
  - [Custom layout printing]:  
Allows you to specify the size and location of the still images freely.
  - [Fixed photo size printing]:  
Allows you to specify the size of the all still images.
  - [Tiled photo printing]:  
Allows you to have the program lay out and print the specified number of images per page with no gaps between still images on the page.
- Selecting [Edit] ▶ [Add Text] allows you to write some text on a still image. You can move added text boxes on the still image by dragging them.
- Selecting [Edit] ▶ [Edit Header] allows you to insert a header.

## 1 Select still images you wish to print and click [Print & Email] ▶ [Layout Print].



- 2** Select a print style from the pull-down menu and click [Print] after specifying the print settings.



- 3** When the print window opens, click [Print].
- 4** When the printing finishes, click  to close the window.



# Organizing Images

## Applying Star Rating

- This task allows you to apply ratings to your images from one star to three stars. The star rating can be used as one of the search conditions, or for the selection of images to be displayed in the Browser Window.
- The default setting of the star rating is two stars.

- 1 Select the image to which you wish to apply the Star Rating.**
- 2 Select [Change Star Rating] from the [Edit] menu.**

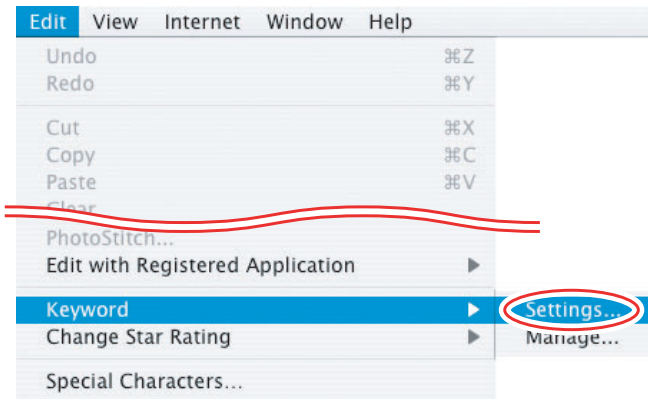


The default setting of the star rating is two stars.

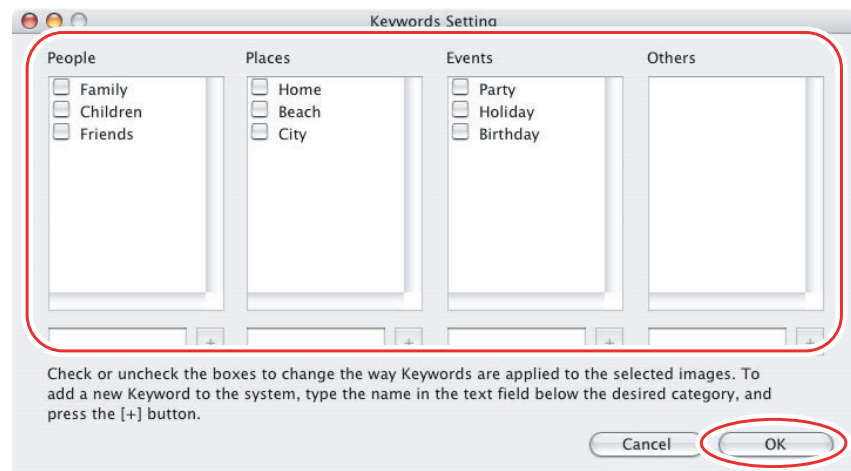
## Specifying the Keywords

You can use keywords when searching for images.

- 1** Select an image to which you wish to apply the keyword.
- 2** Select [Keyword] ► [Settings] from the [Edit] menu.



- 3** Place a check mark next to the keyword you wish to apply and click [OK].



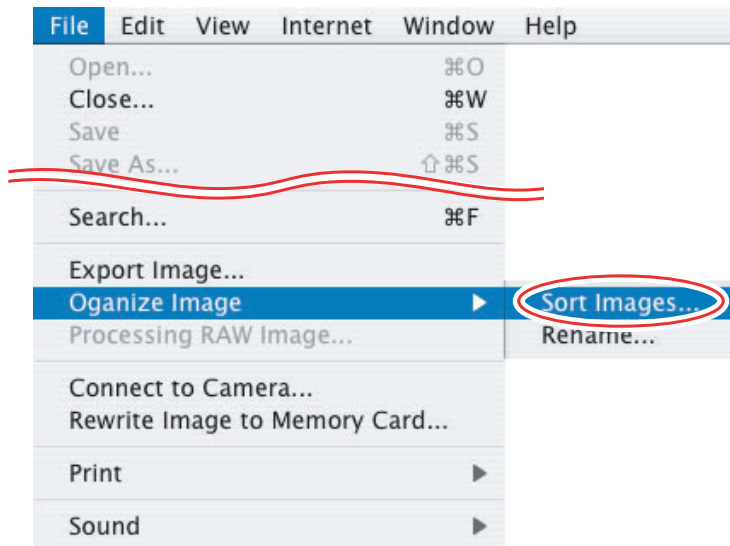
You can add and delete keywords, or change the keyword list in the [Manage Keywords] window by selecting [Keyword] ► [Manage] from the [Edit] menu.

## Classifying the Images

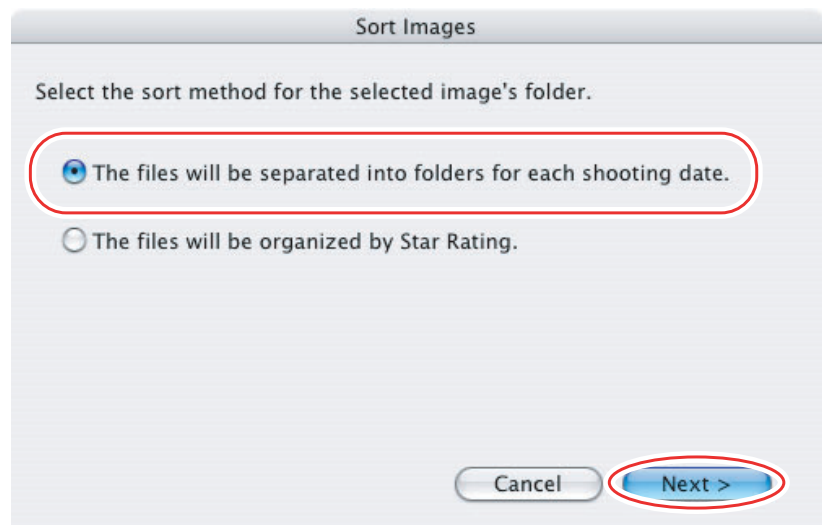
This task allows you to sort images into a folder according to the shooting date or star rating.

### ■ Sort by the Shooting Date

- 1** Select the images you wish to classify and select [Organize Image] ▶ [Sort Images] from the [File] menu.

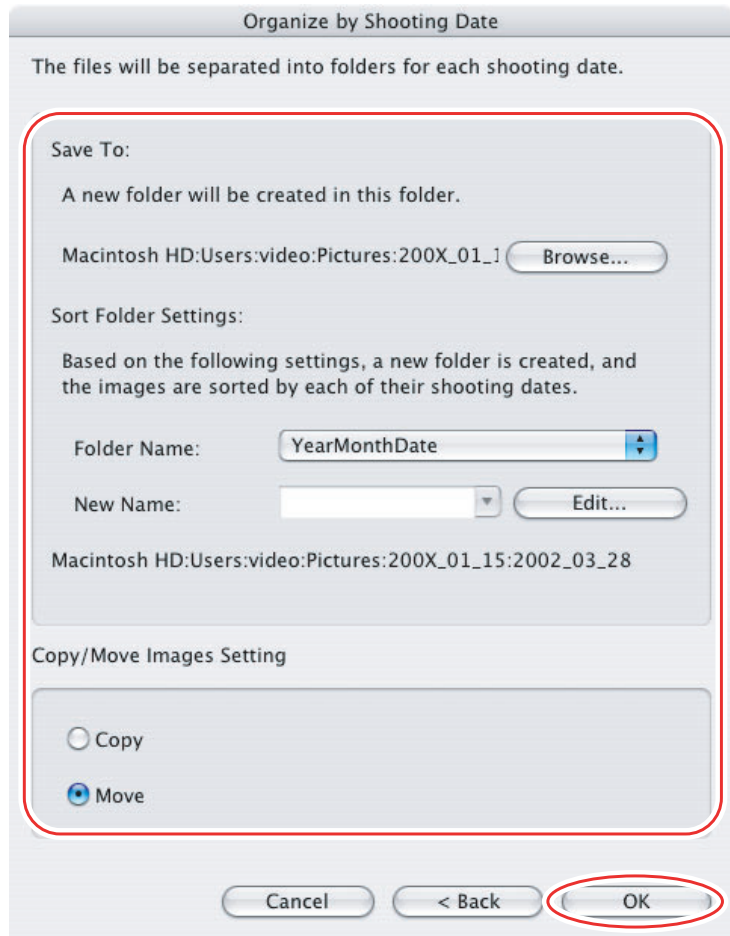


- 2** Select [The files will be separated into folders for each shooting date.] and click [Next].



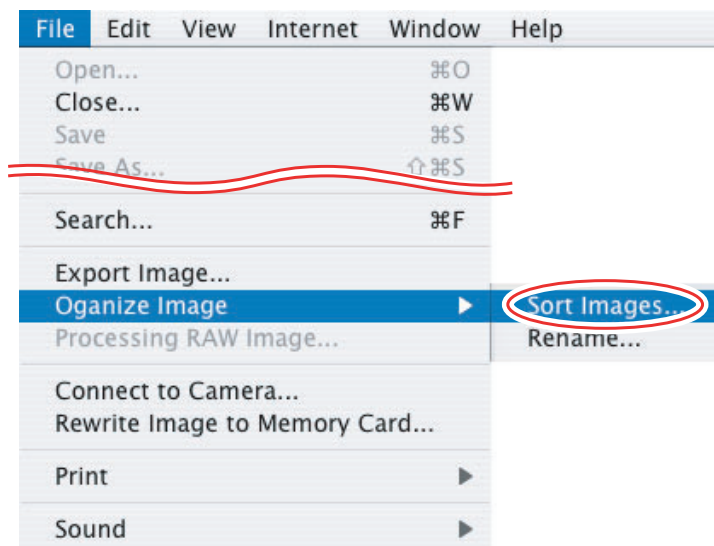
### 3 Specify the sort settings and click [OK].

The selected images are classified into the specific folder.

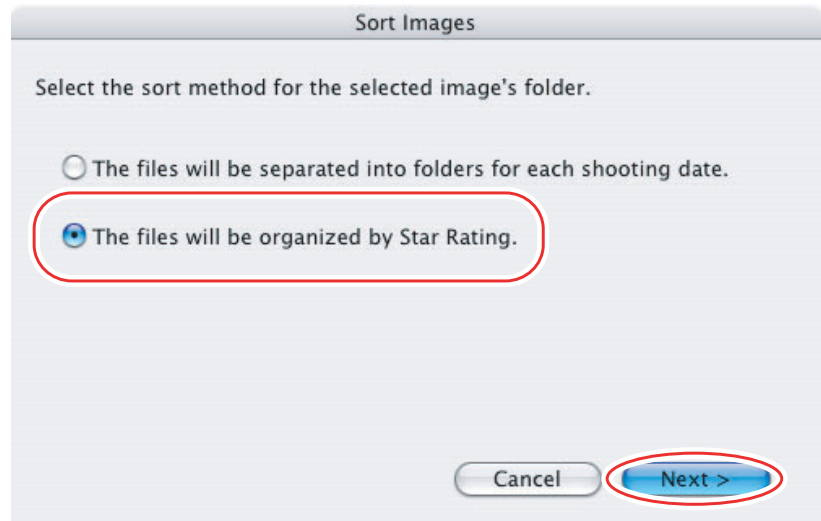


## ■ Sort by the Star Rating

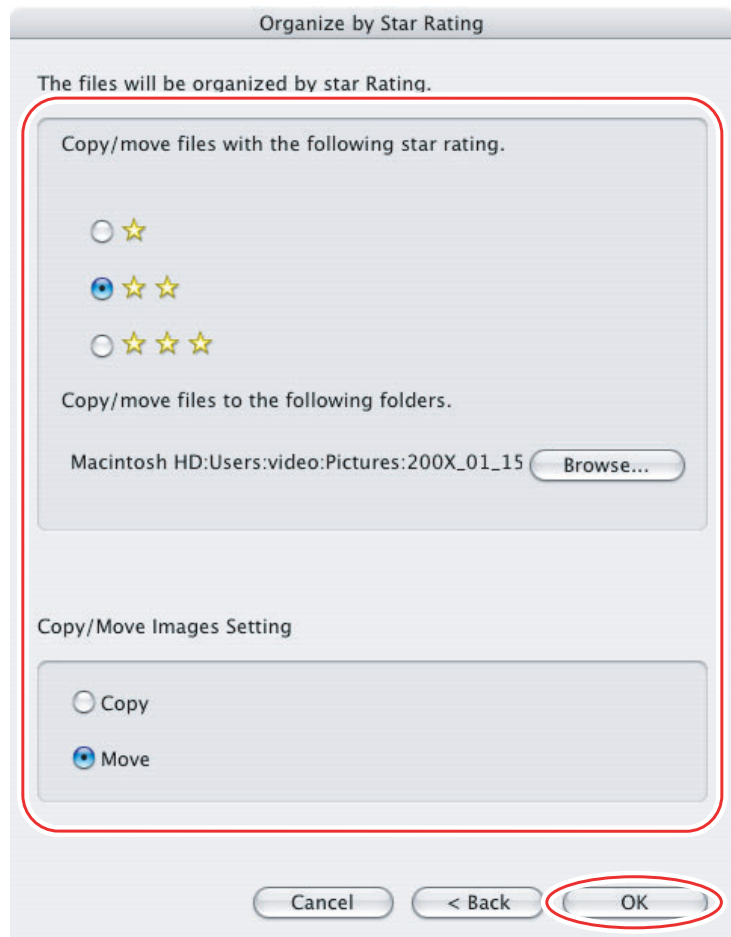
### 1 Select the images you wish to classify and select [Organize Image] ▶ [Sort Images] from the [File] menu.



- 2** Select [The files will be organized by Star Rating.] and click [Next].



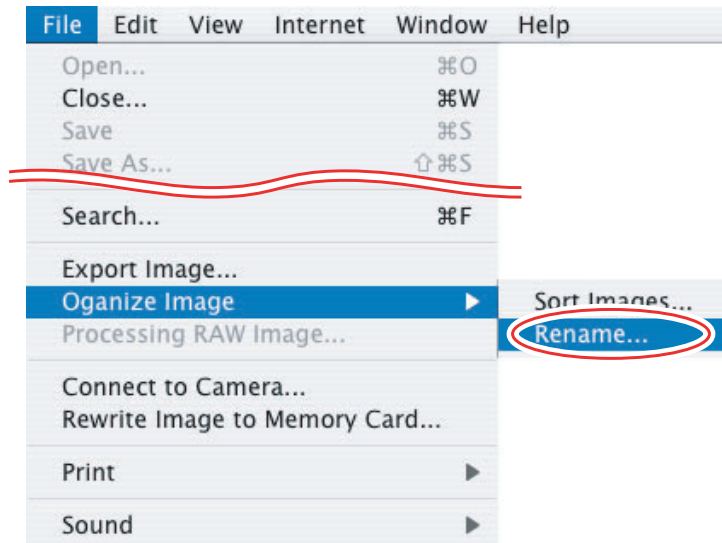
- 3** Specify the sort settings and click [OK].



## Renaming Multiple Files

This task allows you to rename multiple files at the same time, or to rename and copy multiple files.

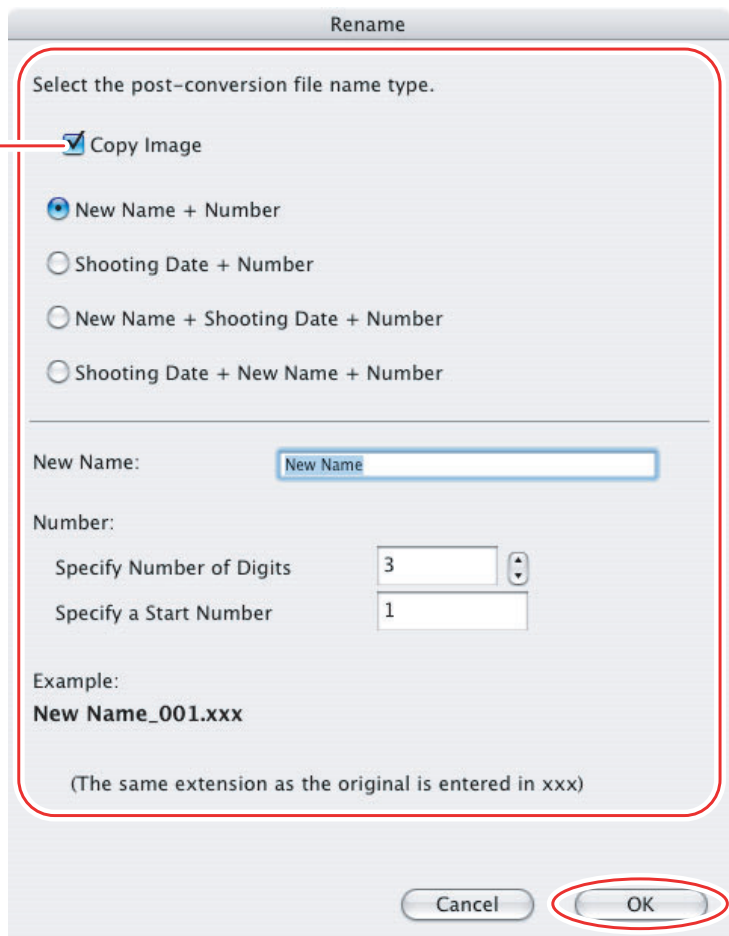
- 1 Select the images you wish to rename and select [Organize Image] ▶ [Rename] from the [File] menu.**



- 2 Specify the settings and click [OK].**

The images are renamed according to the settings specified.

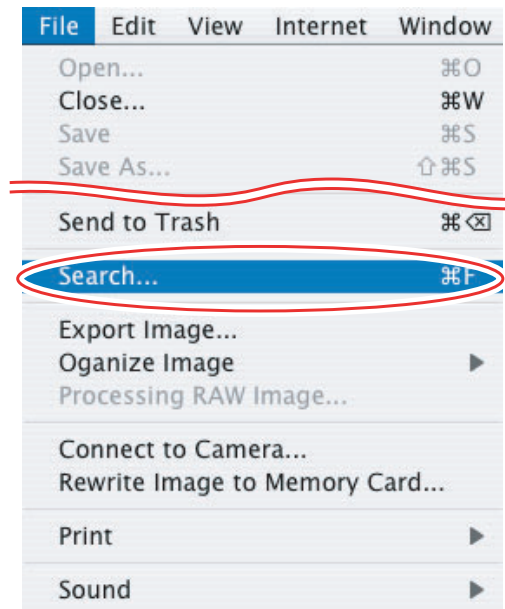
Placing a check mark here makes copies of images with new names. The name of the original images will not be changed.



## Searching for Images

This task allows you to search for images by star rating, modification date, shooting date, comment or keywords.

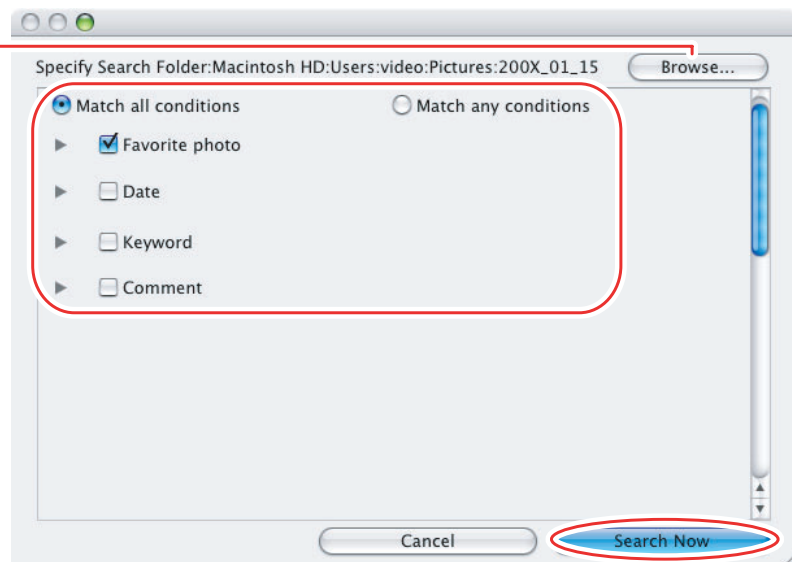
- 1 Select a folder in the explorer view.**
- 2 Select [Search] from the [File] menu.**



- 3 Specify the search conditions and click [Search Now].**

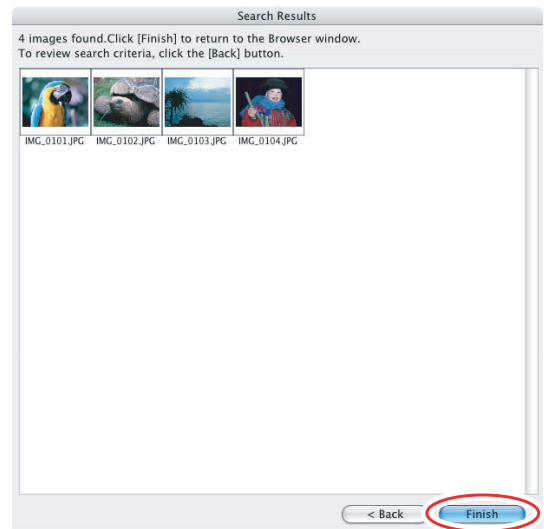
- The search results are displayed as thumbnails.
- Select at least one search condition.
- Clicking the ► icon discloses the parameters of settings.

Clicking this button allows you to specify a folder.



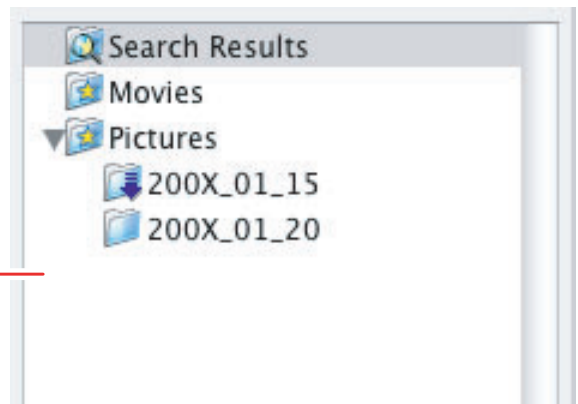
## 4 Click [Finish].

- To change the search parameters and perform another search, click [Back] and repeat steps 3-4.



- The images of the search result are displayed in the [Search Results] folder. You can print or copy these images to another folder.

Explorer View



The searched images will remain in this folder until ImageBrowser is closed or another search is performed, but if you delete an image in this folder, the corresponding original image will be deleted as well.

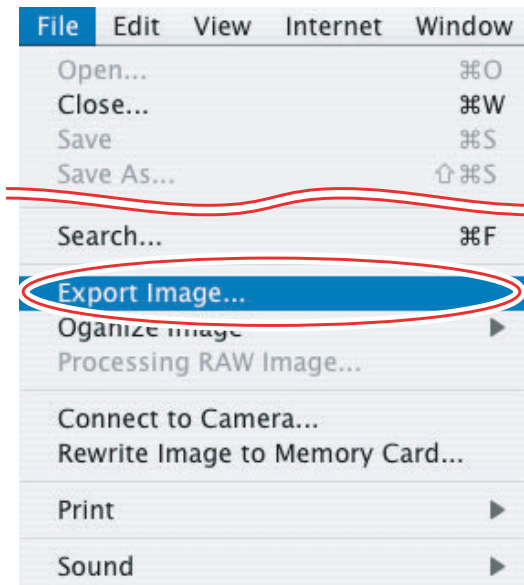


# Exporting Images

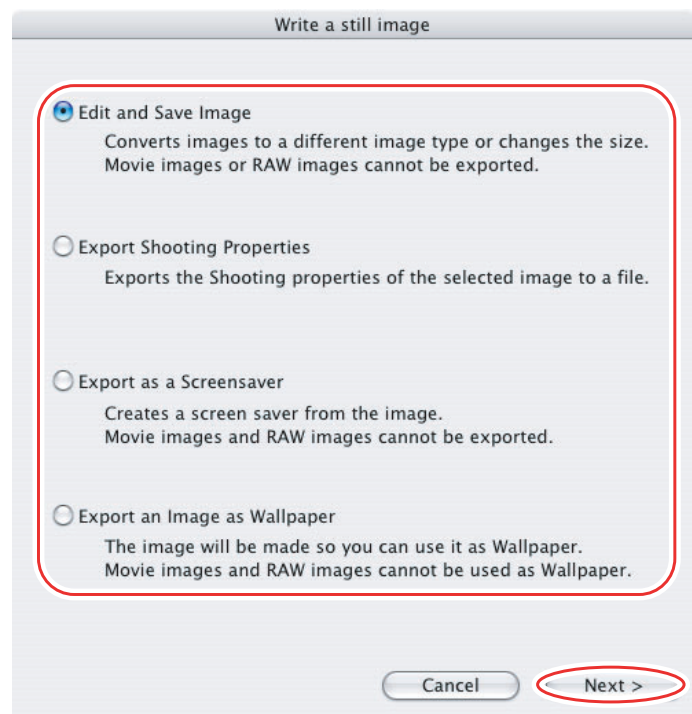
## Changing the File Type and Saving

This task allows you to change the size, resolution or data of selected still images and save them as new files and allows saving the shooting properties of the still image to a text file or copying the still images with new names. Furthermore, you can export still images for use as a screen saver or a wallpaper.

- 1 Select an image you wish to export and **[Export Image]** from the **[File]** menu.



- 2 Select exporting type and click **[Next]**.

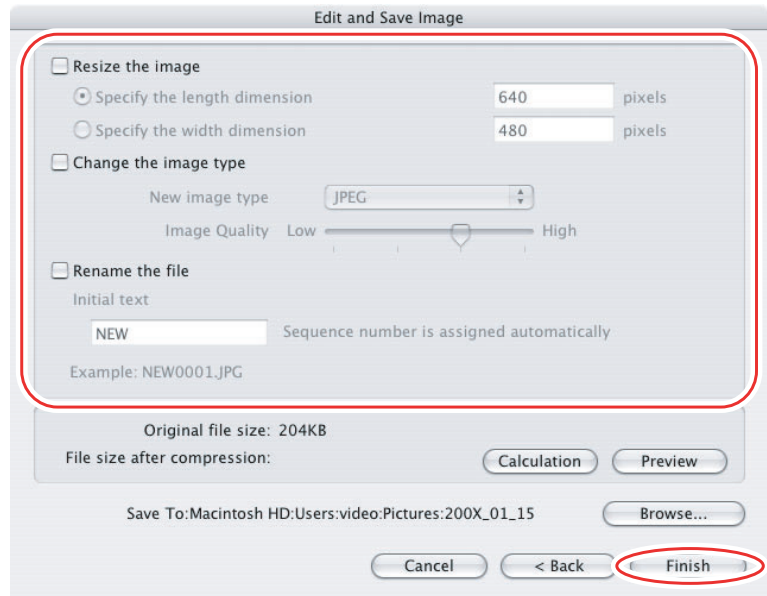


### 3 Specify the export settings and click [Finish].

The window varies depending on the selected export type in step 2.

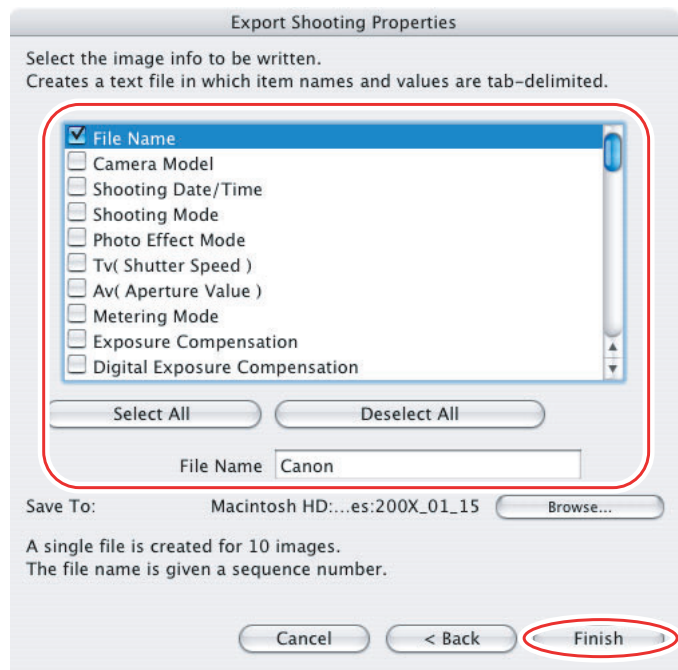
#### When you have selected [Edit and Save Image]:

You can convert still images to another file type, resize and save them as new files. You can select the file type from BMP, PICT, JPEG and TIFF. You can also specify a prefix to be added to the exported still images.



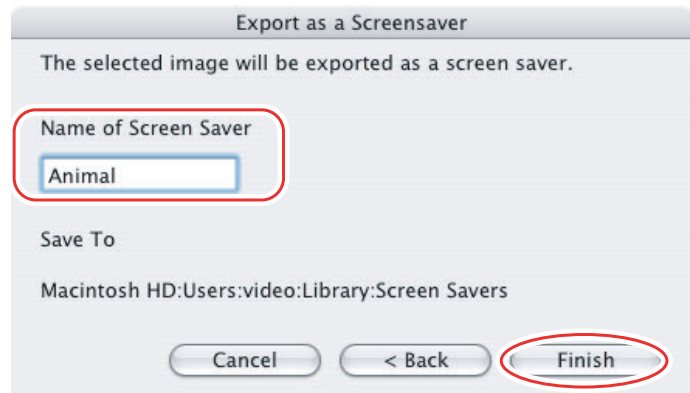
#### When you have selected [Export Shooting Properties]:

You can select information you wish to export and save as a text file.

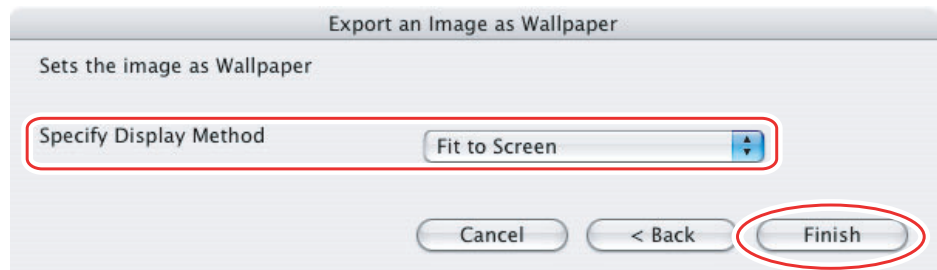


**When you have selected [Export as a Screensaver]:**

You can export and save the image as a screen saver.

**When you have selected [Export an Image as Wallpaper]:**

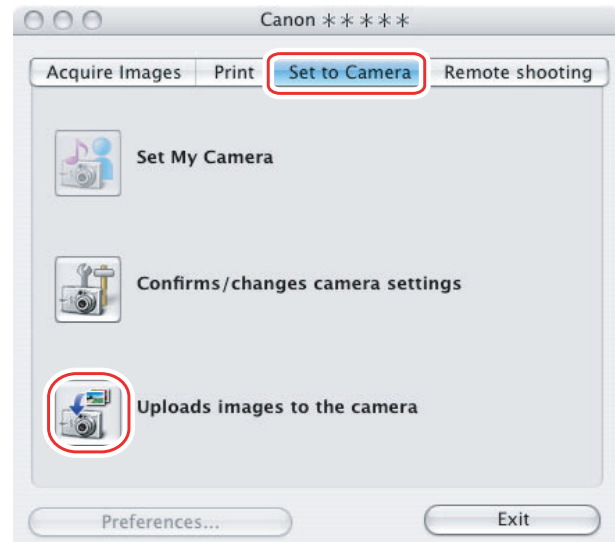
You can export and save the image as a desktop wallpaper. This task cannot be performed if you have selected multiple images.



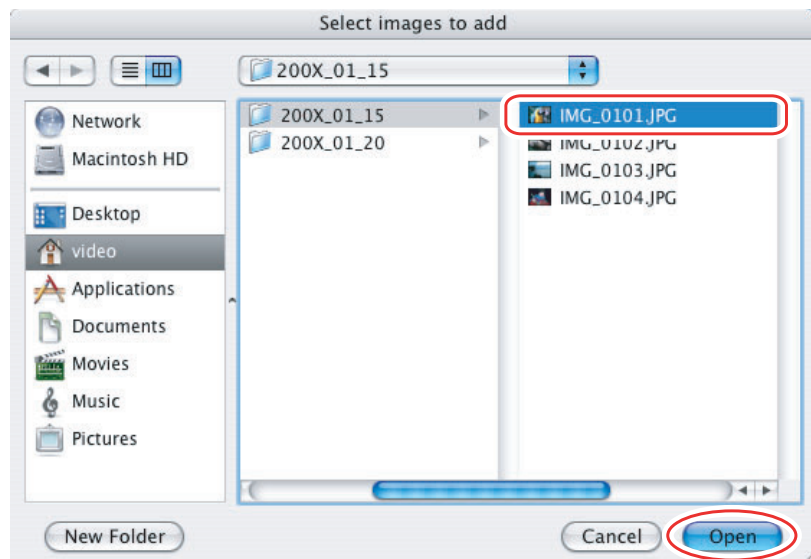
## Uploading Still Images to the camcorder

You can copy still images saved on the computer to the camcorder.

- 1 Connect the camcorder to the computer ( 23).**  
The still images will be added to the memory selected for the playback of still images (built-in hard disk/memory or memory card).
- 2 Click the [Set to Camera] tab in the Camera Control window, and [Uploads images to the camera].**

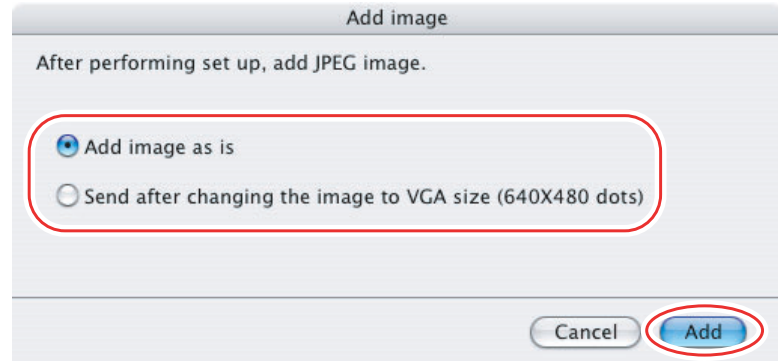


- 3 Select the still image you wish to add and click [Open].**  
You can check the selected image by clicking the file name.



## 4 In the Add image window, select the image size and click [Add].

- The selected images will be recorded to the memory card.
- When recording is complete, the images will appear in the CameraWindow.

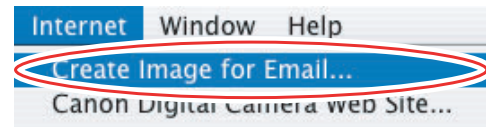


# Using Various Functions

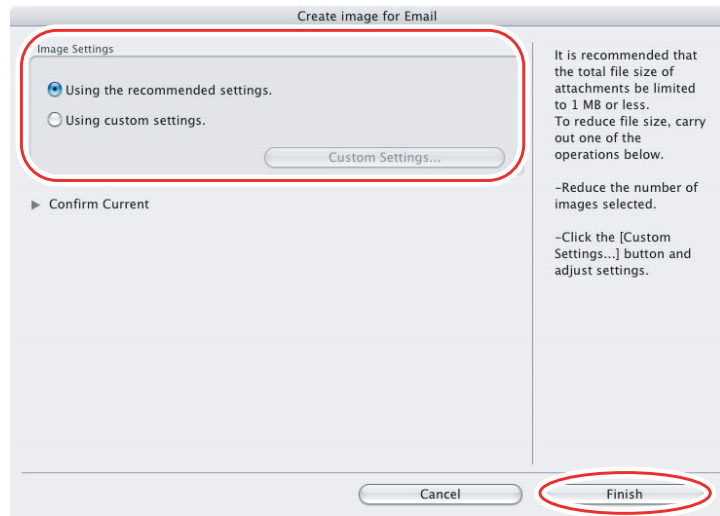
## Attaching Images to E-mail Messages

You can attach selected images to an e-mail message. If necessary, you can make the image file size smaller.

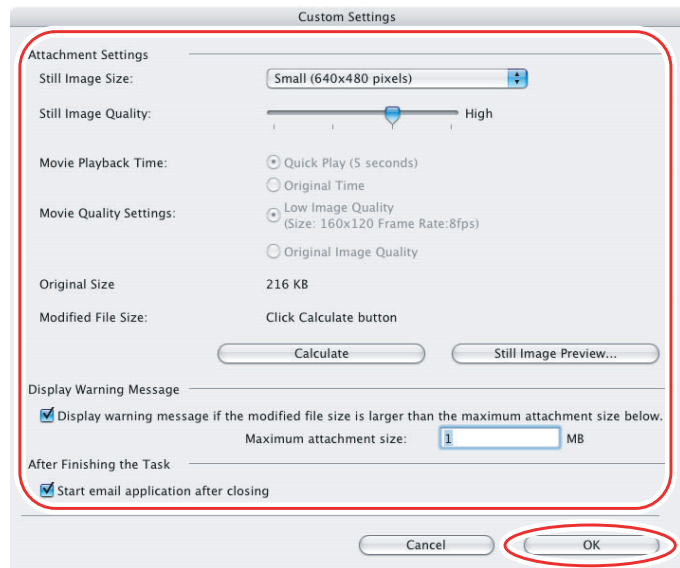
- 1 Select the images you wish to send in the Browser Area.**
- 2 From the [Internet] menu, select [Create Image for Email].**



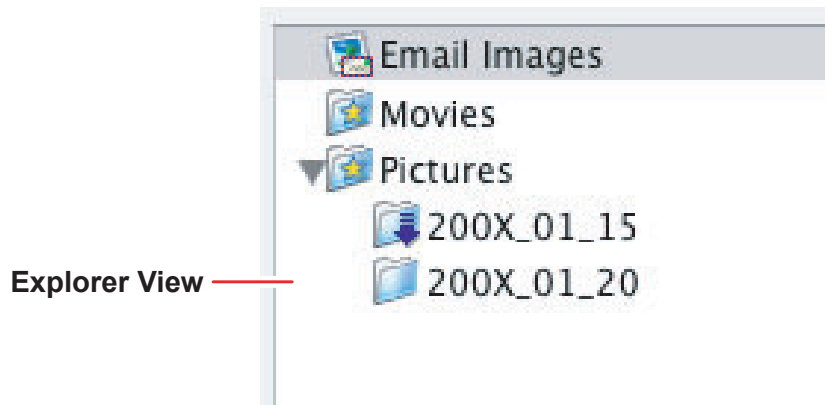
- 3 Specify the image size and click [Finish].**



- If you select [Using custom settings.], change the settings in [Custom Settings] and click [OK].



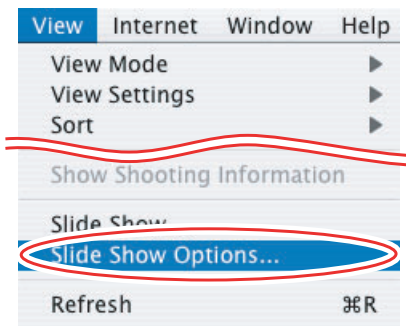
- The image will be saved to the [Email Images] folder in the explorer view section.



- Note that some e-mail software may not start automatically. For details, refer to the Help menu of the OS you are using.
- You can also set the e-mail software that starts automatically after the image is created. To do so, click the [Applications] folder on the drive where the OS was installed and then double click the [Mail] icon. Next, in Mail preferences, click [General] and then configure [Default Email Reader].
- The images in the [Email Images] folder are saved in the following location: Open the [Users] folder, followed by [User login name], [Library], [Preferences], [ImageBrowserUserData], and [Mail].

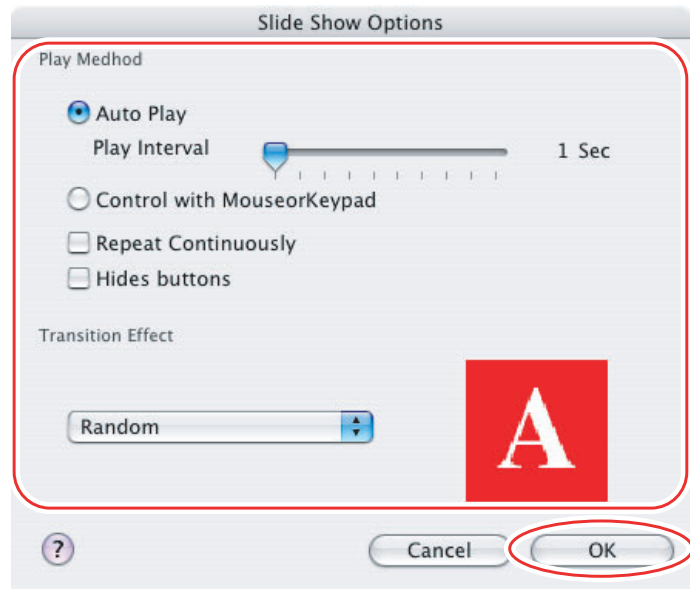
## Running a Slide Show

### 1 From the [View] menu, select [Slide Show Options].



### 2 Select the slide show settings and click [OK].

- [Auto Play]: Select the interval by sliding the control under [Play Interval] (from 1 to 30 seconds).
- [Control with Mouse or Keypad]: Advances the slide show manually with the mouse or keyboard.
- [Repeat Continuously]: Runs the slide show in a loop.
- [Hides buttons]: Hides the buttons during the slide show.
- [Transition Effect]: Select the transition effect to be used when moving from one slide to another. When you select an effect, you can check the effect in the preview window.



### 3 Select the images and select [Slide Show] from the [View] menu.

Click  on the lower right of the screen to end the slide show.

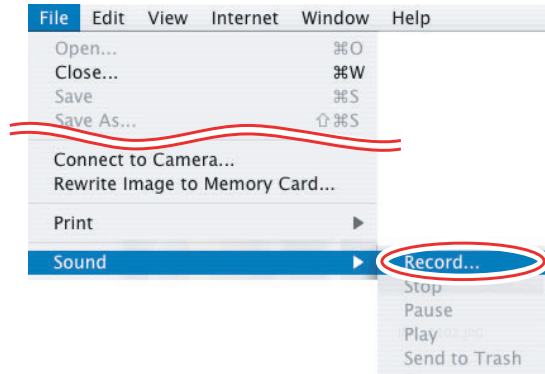


## Adding Sound to a Still Image

- To add sound to still images, use the Mac OS recording function. Depending on the computer, you may need to connect peripherals such as microphones. Check if your computer settings allow recording.
- The sound cannot be played back on the camcorder.

### 1 In the Browser Area, select a still image and select [Sound] ▶ [Record] from the [File] menu.


The recording window appears.




### 2 Click and start recording when the [Save] button is enabled.



### 3 Click [Save] to stop recording.

-  appears on the still image.
- The sound file will be copied in AIFF type (extension “.AIF”) to the same folder as the still image.
- To play back the sound, select an image with a sound icon and select [Sound] ▶ [Play] from the [File] menu.



- To remove sound from a still image, select [Sound] ▶ [Send to Trash] from the [File] menu.  disappears and the copied sound file will be deleted.
- While playing back the sound, select [Sound] ▶ [Pause] or [Stop] to control the status.

## Reviewing and Changing the Owner Name of the Camcorder

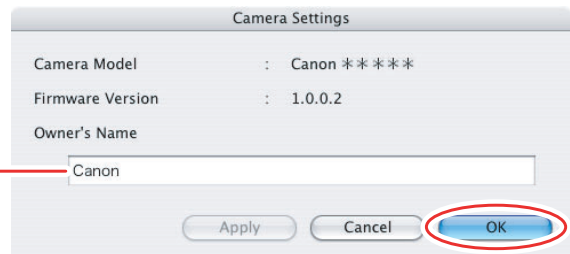
You can change and confirm the owner's name of the camcorder.

- 1 Connect the camcorder to the computer ( 23).**
- 2 Click the [Set to Camera] tab and click [Confirms/changes camera settings] in the Camera Control window.**



- 3 Enter the camcorder's owner's name and click [OK].**

Input the camcorder's owner's name here (up to 31 characters).



# Uninstalling the Software

Uninstall the software when you wish to delete it from your computer or when reinstallation is required to fix corrupted files.

## Uninstalling ImageBrowser

Move the program's folder and subfolders into the Trash to uninstall programs such as ImageBrowser.



- If the program folders contain subfolders into which images have been saved, be careful not to accidentally delete those subfolders.
- For more details on how to uninstall ImageBrowser, refer to Read Me.

## Connection

---

- ? Camcorder is not recognized when connected to the computer.**
  - ➔ **There is no memory card in the camcorder.**  
Insert a memory card into the camcorder.
  - ➔ **The camcorder is not set to the correct mode.**  
Set the camcorder to still image playback mode.
  - ➔ **Camcorder is not correctly connected to the computer.**  
Read *Connecting the Camcorder to a Computer* (📖 23) and check the connection.  
Ensure that you are using the correct cable and that its connectors are in good shape.
  - ➔ **If you are experiencing operational problems, detach the USB cable from the camcorder and computer and terminate the connection. Restart the computer and then reconnect the camcorder.**

## ImageBrowser Operation

---

- ? Cannot download still images.**
  - ➔ **The camcorder is not set to the correct mode.**  
Set the camcorder to still image playback mode.
- ? Image files or folders do not appear in ImageBrowser.**
  - ➔ **Images or folders shown in ImageBrowser and the actual file contents may be different.**  
Click the [View] menu and select [Refresh].



## **CANON INC.**

### **U.S.A. ————— Canon U.S.A., Inc.**

Canon Customer Care Center

Tel (US): 1-800-828-4040

(Mon.-Fri., 9 AM to 8 PM Eastern Time)

### **CANADA ————— Canon CANADA Inc.**

Tel (Canada): 1-800-OK-CANON (1-800-652-2666)

### **ASIA ————— Canon Hongkong Co., Ltd.**

19/F., The Metropolis Tower, 10 Metropolis Drive,

Hunghom, Kowloon, Hong Kong

Phone: 852-2170-2828

Fax: 852-2723-9684

The information in this manual is verified as of 1 June 2008.