

Canon

SELPHY Beginner's Guide

- Simple Steps for Basic Operation
- Make Everyone Smile “Recipes” for Printing

ENGLISH

SELPHY ES2/ES20

COMPACT PHOTO PRINTER

CDI-E347-010

© 2007 CANON INC. PRINTED IN CHINA



Preserve Your Memories with SELPHY

You can easily edit and print family photos to preserve your precious memories, all with your SELPHY printer.

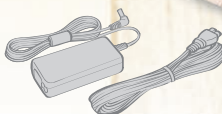


Initial printing

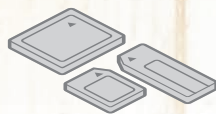
Things to Prepare



- Cartridge
(Postcard size is used in this section.)



- Compact Power Adapter
- Power Cord



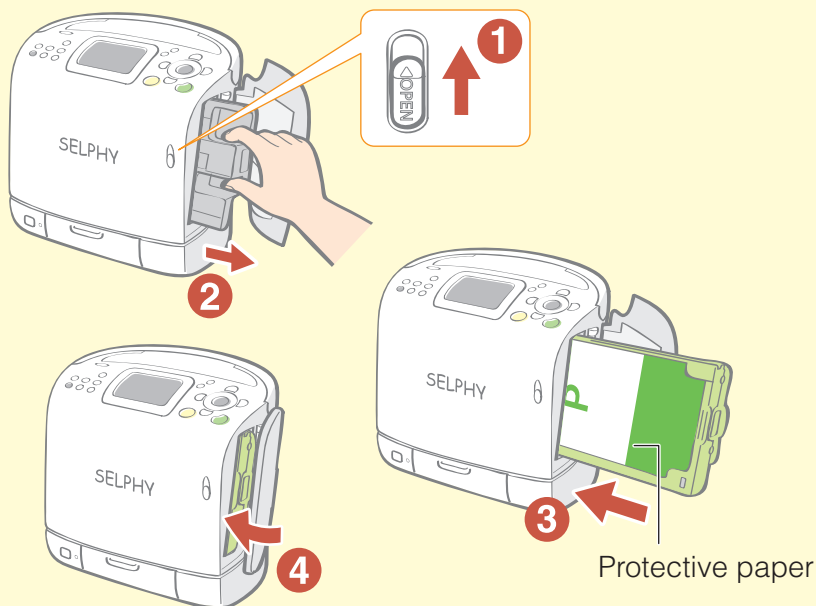
- A Memory Card

Simple Steps for Basic Operations

Printing images from the memory card using steps A through E.

A

Load the cartridge*



1

Slide the cover lever up to open the cartridge cover

2

Remove the cleaner unit

3

Load the cartridge

4

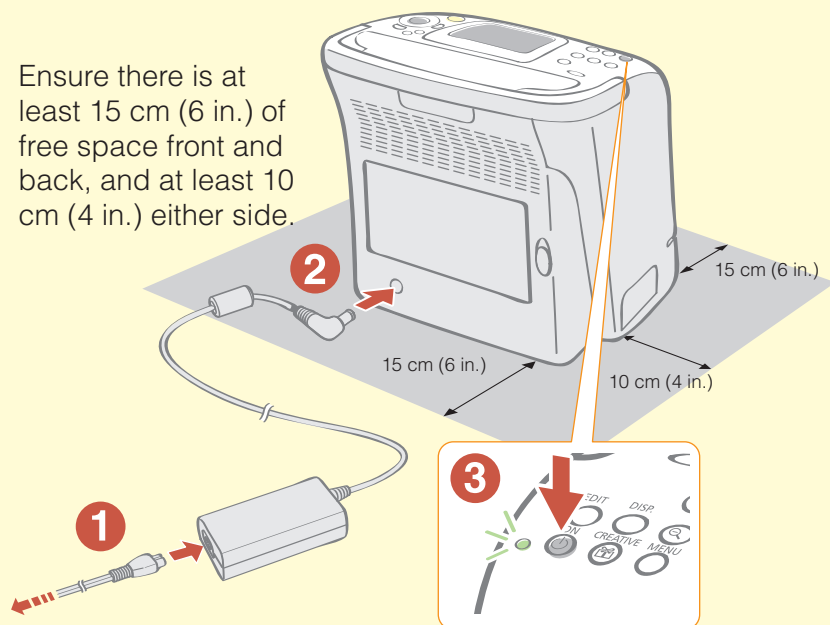
Close the cartridge cover

* The ink and paper integrated cartridges for the SELPHY ES series are called Easy Photo Packs.


B

Connect the printer to a power source and turn on the power

Ensure there is at least 15 cm (6 in.) of free space front and back, and at least 10 cm (4 in.) either side.

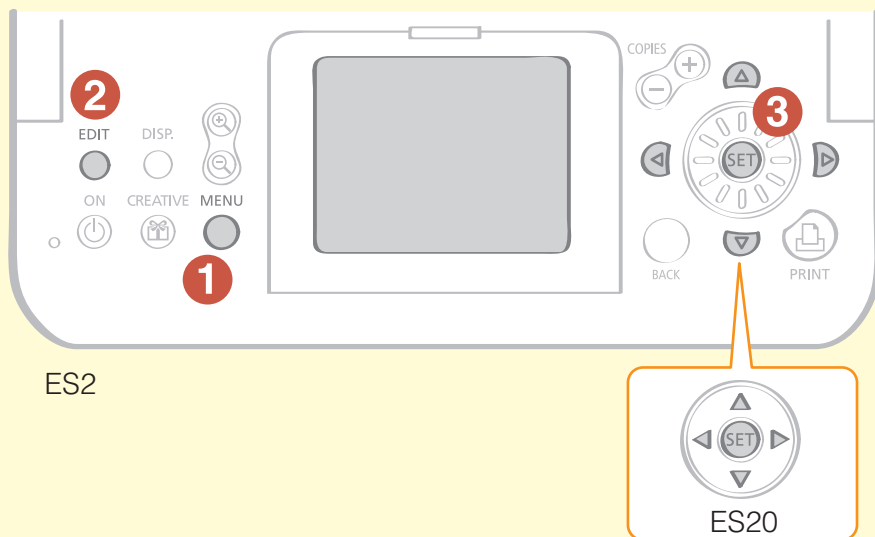


To power outlet

- 1** Insert the power cord to the compact power adapter and plug the other end into a power outlet
- 2** Connect the compact power adapter to the printer
- 3** Press  until the power lamp lights green to turn on the power



Set the display language



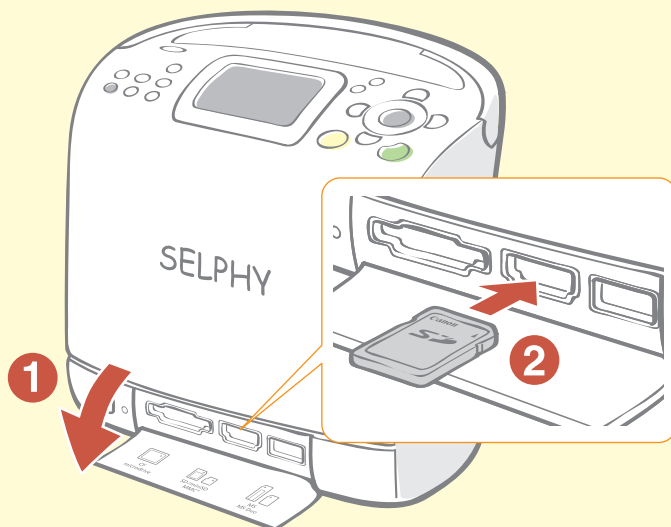
- 1 Press (MENU) and select [Printer Setup] with or , and press
- 2 Select [Language] and press (EDIT)
- 3 Press , , or to select the language you wish to set and press



The selected language is set and the display returns to [Printer Setup].

D

Insert the memory card into the printer



1 Open the card slot cover

2 Insert a memory card into the appropriate card slot

Images saved on the memory card are displayed on the LCD monitor.



Compatible Memory Cards

CF/microdrive Slot

- CompactFlash Card
- Microdrive
- xD-Picture Card*

MS/MS Duo Slot

- Memory Stick
- Memory Stick PRO
- Memory Stick Duo
- Memory Stick PRO Duo
- Memory Stick micro*

SD/miniSD/MMC+ Slot

- SD Memory Card
- miniSD Card
- SDHC Memory Card
- miniSDHC Card
- MultiMediaCard
- MMCplus Card
- HC MMCplus Card

- microSD Card*
- microSDHC Card*
- MMCmobile Card*
- MMCmicro Card*
- RS-MMC Card*

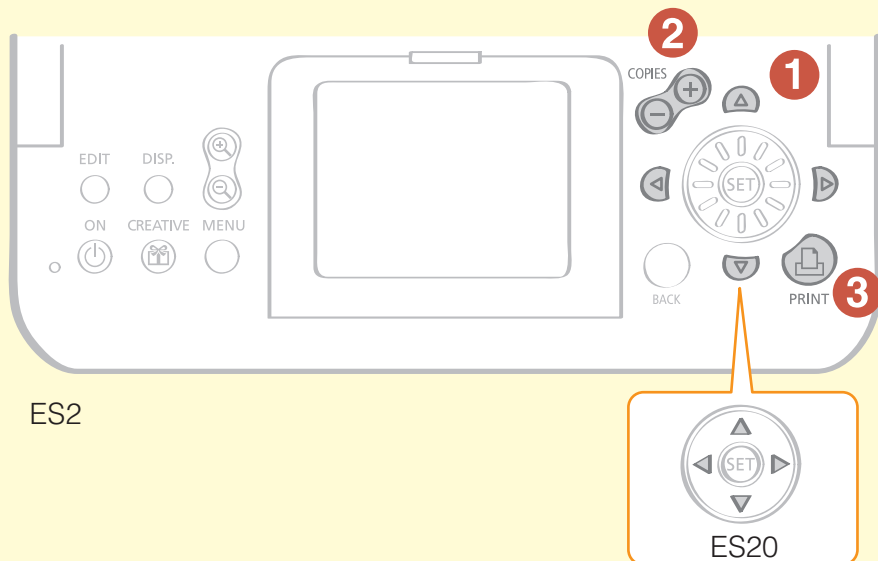
* Card adapter required.



For memory cards requiring an adapter, be sure to first insert the memory card into the adapter before inserting the adapter into the appropriate card slot. If you insert the memory card into a card slot without first inserting into an adapter, you may not be able to remove the memory card from the printer.

E

Print



ES2

ES20

- 1 Press ▲, ▼, ◀ or ▶ to select the image you wish to print
- 2 Press ⊕ or ⊖ to select the number of copies to print
- 3 Press 🖨️

>>> Printing starts



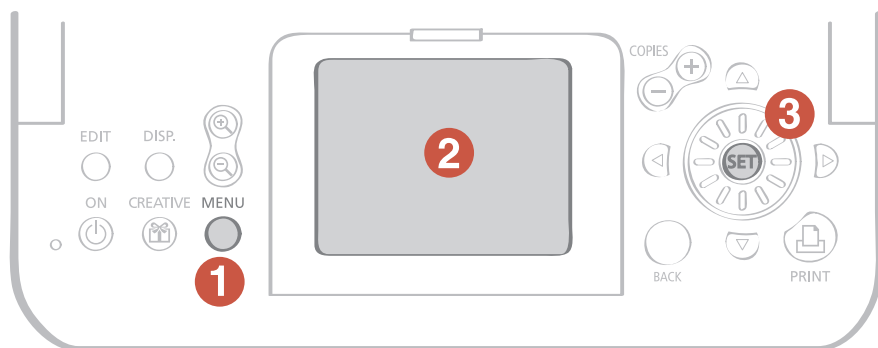
ES2's Easy-Scroll Wheel

You can also use the Easy-Scroll Wheel to select an image.





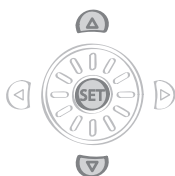
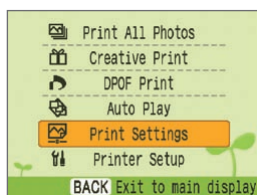
How to print with the date



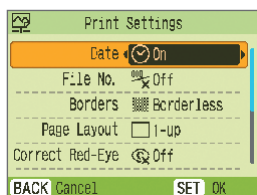
Follow the instructions indicated below before selecting images.

1 Press (MENU)

2 Select [Print Settings] in the menu screen and set the date



Press or to select [Print Settings] and press .



Press or to set [Date] to [On].

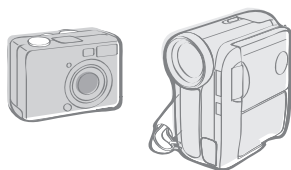
3 Press

Date setting with [On] is saved.

You can now select an image you wish to print with the date and print it.

Print from Mobile Phones and Computers, as well as Digital Cameras, with Your SELPHY Printer

Camera



You can print an image taken with a camera only if you connect the camera to the printer with a USB cable.

Mobile

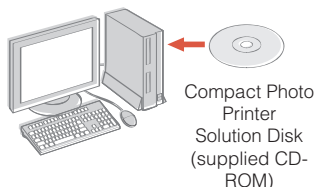


You can print without a cable from IrDA (infrared)^{*1} or Bluetooth^{*2} enabled mobile phones.

^{*1} ES2 only.

^{*2} Bluetooth Unit BU-20 (sold separately) is required.

Computer



After installing the supplied software, you can use a USB cable to print images saved on your computer. You can also add text to the images before printing, and print a variety of layouts.

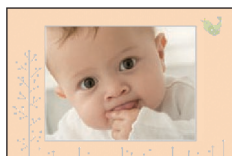
For the details on how to use the software, refer to the Printer User Guide after installing it from the supplied CD-ROM. Installation instructions for the Printer User Guide are on page 12 of this guide.

What You Can Do with Your SELPHY Printer

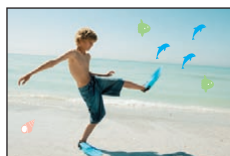
Enjoy printing images with your SELPHY printer.

● Creative Print

● Add Frames



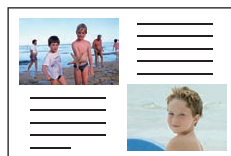
● Add Clip Art Stamps



● Create a Calendar



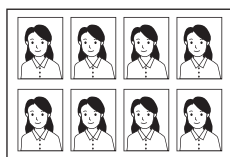
● Print a Picture Diary



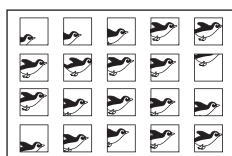
● Add a Speech Bubble



● Create ID Photos



● Print a Movie



● Print with Effects (ES2 only)



● Print Settings

● Print the Date



10/10/2007

● Print the Image Number

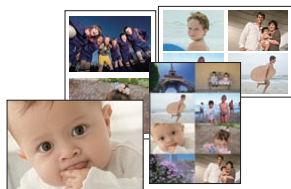


100-0002

● Add Borders to an Image



● Print after Selecting a Page Layout



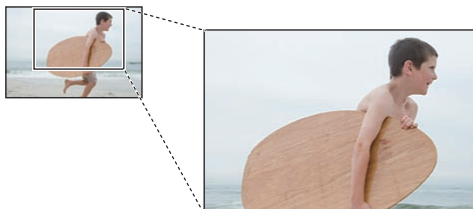
● Print after Correcting Red-Eye



● Print after Adjusting the Brightness

● Print in Sepia, or Black and White

● You can enlarge and print a portion of an image



For the details on the functions of the printer, refer to the Printer User Guide after installing it from the supplied CD-ROM. Installation instructions for the Printer User Guide are on page 12 of this guide.

Printer User Guide

For details about the functions introduced in this book, refer to the Printer User Guide that is included in the supplied CD-ROM.

The following topics are covered.

- *Usage details*
- *Useful functions*
- *Supplied software*

● Installing the Printer User Guide



* Adobe Reader is required to view the Printer User Guide.

Separately Sold Products

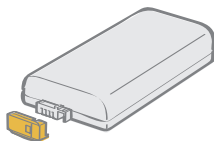


Cartridge

Ink and paper integrated cartridge.
The cartridge differs depending on the paper size and ink type. Please refer to the table below.

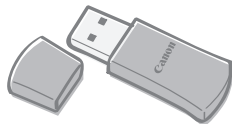
Paper Size	Ink Type	Name (Product No.)	No. of Sheets	Color of Cartridge
Postcard size (100 × 148 mm) (4 × 6 in.)	Color	Easy Photo Pack E-P100	100	Green
		Easy Photo Pack E-P50	50	
	BW	Easy Photo Pack E-P25BW	25	Gray
L size (89 × 119 mm) (3.5 × 4.7 in.)	Color	Easy Photo Pack E-L100	100	Blue
		Easy Photo Pack E-L50	50	
Card size (54 × 86 mm) (2.1 × 3.4 in.)	Color	Easy Photo Pack E-C25	25	Orange
		Easy Photo Pack E-C25L *	25	

* Card-sized label sheets.



Battery Pack NB-ES1L

You can print outdoors, or at locations without a power outlet (ES2 only).



Bluetooth Unit BU-20

You can print wirelessly from a Bluetooth-enabled mobile phone.

Safety Precautions

Use this equipment correctly according to the following precautions to avoid the risk of injury, fire, electrical shock, malfunction or other hazards. Equipment refers to the printer and compact power adapter.

The safety precautions noted on the following pages are intended to instruct you in the safe and correct operation of the printer to prevent injuries or damage to yourself or other persons.



WARNING

Do not play the supplied CD-ROM(s) in any CD player that does not support data CD-ROMs.

Playing the CD-ROM(s) in an audio CD player (music player) could damage the speakers. It is also possible to suffer from hearing loss from listening with headphones to the loud sounds of a CD-ROM played on a music CD player.

Equipment



WARNING

Store the equipment in a place where it cannot be reached by children.

Do not disassemble or modify the equipment.

If the equipment is dropped or the casing becomes damaged, do not continue operation.

Stop operating the equipment immediately if it emits smoke or noxious fumes.

Do not allow water or other liquids to enter the interior of the equipment.

If the equipment is subjected to water droplets or damp salty air, gently wipe it with a soft, absorbent cloth.

Do not insert or drop metallic objects or flammable substances into the equipment interior.

Immediately switch off the printer power and remove the power cord from the power outlet. (If powering it by battery, remove the battery.)

Do not touch metal parts of devices or the power plug during thunderstorms.

Immediately stop using the equipment and distance yourself from it.

Do not use flammable solvents such as alcohol, benzene, or paint thinner to clean the equipment.

Do not rest heavy objects on the power cord or plug, pull on it with excessive force or damage it.

Do not use a power source (compact power adapter, battery) that is not specified for the equipment.

Remove the power cord on a regular periodic basis and wipe away the dust and dirt that collects on the plug, the exterior of the power outlet and the surrounding area.

Do not handle the power cord if your hands are wet.



CAUTIONS

Do not stick any part of your hand into the printer interior.

Do not use or store the equipment in the following types of places.

Humid or dusty areas, places subject to heavy vibrations, places near flames, places subject to strong sunlight, or hot places such as an automobile trunk or dashboard.

Do not attach metallic pins or allow dirt to collect on the power plug or recharging connectors.

Do not excessively pull or bend the power cord.

Do not use the compact power adapter for any other equipment except this printer, use it beyond its rated capacity or voltage, or leave the plug partially inserted into a power outlet.

Do not open the cartridge cover during printing.

- If you do so, printing will stop.
- Paper moves back and forth in the printer during printing. Placing your hand in the way of the moving paper may result in injury.

Unplug the equipment when you are not using it.

Leaving the equipment plugged in during prolonged periods of non-use poses risk of electric shock or fire.

Battery (ES2 only)



WARNING

Do not place the battery pack near a heat source or expose it to direct flame or heat.

The battery pack should not be immersed in water.

Do not attempt to disassemble, alter or apply heat to the battery pack.

Avoid dropping or subjecting the battery pack to severe impacts that could damage the casing.

Use only recommended battery pack and accessories.

There is a risk of the battery exploding or leaking. In the event that a battery leaks and the eyes, mouth, skin or clothing contact these leaked substances, immediately flush with water.

When you are not using the printer, remove the battery and store it properly.

Do not place anything, such as tablecloths, carpets, bedding or cushions, on top of the battery charger while it is charging.

There is a risk of heat generation or deformation if it is left connected for a long period of time.

Before you discard a battery, cover the terminals with tape or other insulators to prevent direct contact with other objects.

Contact with the metallic components of other materials in waste containers may lead to fire or explosions.



CAUTIONS

**RISK OF EXPLOSION IF BATTERY IS REPLACED BY AN INCORRECT TYPE.
DISPOSE OF USED BATTERIES ACCORDING TO LOCAL REGULATION.**

You Think There is a Problem

If the solutions below do not remedy your problem, contact the retail outlet or a Canon customer support center.

Printer and Power Source

Power will not turn on

- **Has the plug come out of the power outlet?**
- **Is the connector of the compact power adapter securely connected to the printer's DC IN terminal?**
- **Did you try pressing Ⓢ for a long time?**

Battery Pack

- **Is the battery sufficiently charged?**
- **When installing it, did you press on the battery until it clicked into place?**

Printing Problems

Cannot Print

- **Is the printer power turned on?**
- **Is the printer connected to more than one device?**
Do not simultaneously connect to a camera, memory card or computer.
- **Is the cartridge loaded correctly?**
- **Is the ink sheet slack?**
- **Has the printer overheated?**
The printer will temporarily stop when it exceeds a certain temperature. This is not a malfunction. Wait until the temperature drops and the printer resumes. A message will appear on the computer display if you are connected to a computer when this happens, but you should wait until printing resumes without cancelling the print.

Printing from Memory Cards

- **Is the memory card inserted all the way into the slot with the label facing upward?**
- **Do the images conform to the Design rule for Camera File system?**
- **Some memory cards require a specific adapter. Have you inserted the memory card directly into the card slot without first inserting the card into the adapter?**

Printing from Cameras

- **Is the printer connected to the camera correctly?**
- **Does the firmware of the Canon-brand camera support the printer?**

Cannot Print (continued from previous page)

- **Does the camera battery have sufficient charge?**

Replace the battery with a fully charged (or new) battery, or use the compact power adapter for the camera.

Printing from Computers

- **Did you install the printer driver according to the correct procedures?**
- **Is the printer connected directly to a port on the computer with the USB cable?**
The printer may not operate correctly if it is connected to a USB hub.

Problems Exclusive to Windows

- **Is the printer set to offline?**
Right-click the printer icon and use the offline setting.

Problems Exclusive to Macintosh

- **Is the printer registered on the Printer List?**

Image Does Not Appear When Memory Card is Inserted

- **Is the memory card inserted all the way into the correct slot with the label facing up?**
- **Do the images conform to the Design rule for Camera File system?**
- **Some memory cards require a specific adapter. Have you inserted the memory card directly into the card slot without first inserting the card into the adapter?**

Cannot Print the Date

Printing from Memory Cards

- **Is the date imprint option set?**
If you are using DPOF settings, the date imprint settings are configured on the camera.

Printing from mobile phones

- **When using IrDA or Bluetooth, the date will not be printed.**

Printing from Cameras

- **Is the date imprint option set to [Off] on the camera?**
If the setting is [Default], the printer settings are reflected.

Cannot Print Cleanly

- **Is the ink sheet or paper dirty?**
- **Is dirt lodged within the printer?**
- **Has condensation formed within the printer?**
Leave it to dry at room temperature for a while.
- **Is it placed near a device with a strong electromagnetic or magnetic field?**
Set it at least one meter (3 ft.) apart.

Colors on the Computer Display and the Print are Different

- **Color generation methods are different for computer displays and printers.**
Moreover, the variance may be attributable to the environment in which the display is viewed (color and strength of the light), or to the display's color adjustment settings.

After using the computer to cancel a print in progress, an image that had already been printed was printed again when resumed printing.

- **Are you using a Macintosh computer?**
When you restart printing on a Macintosh after canceling, an already printed image may print again when printing resumes.

Paper Problems

Frequent Paper Jams

- **Has too much paper been left in the print receptacle?**
Do not leave more than 50 sheets in the print receptacle.
- **Has the ejected paper fallen over?**
Paper jams occur if ejected paper falls over (lean forward). Remove the jammed paper.

Cannot Print the Specified No. of Prints.

- **Is the printer's power being turned on and off repeatedly?**
The printer initialization consumes ink. There may not be enough ink left for the allotted sheets in the set.
- **Is the ink sheet being pulled?**
Do not forcefully pull out the ink sheet.

Print is not ejected.

- **Has paper jammed inside the printer?**
Remove the jammed paper.
- **Is the print receptacle cover open?**
If the print receptacle cover does not open automatically and paper gets jammed, press the print receptacle button on the left side of the operation panel to open the print receptacle cover and remove the jammed paper.

Error Messages

The power button of the printer blinks or lights red and a message is displayed on the LCD monitor if any error occurs during printing. If a problem occurs while the printer is connected to the camera, the camera's LCD monitor may display an error message.

Power Button

Blinks red

- An error (e.g. paper jam) preventing printing from restarting has occurred. Turn the printer off then back on again, and try printing again.
- There is a problem with the battery and it cannot be charged. Replace with a different battery, or use a compact power adapter for the printer (ES2 only).

Blinks orange

- Battery pack depleted. Change it with a fully charged battery pack or recharge the current battery pack. You can also use the printer's compact power adapter.
- Temperature is not within the operating temperature range for charging (ES2 only). Charge within 5 - 40 °C (41 - 104 °F).

Lights red


- Check the error message on the LCD monitor.

LCD Monitor

No paper/ink

- Check that the cartridge is correctly installed.
- Make sure that the cartridge contains paper/ink.
- If paper is not feeding correctly, remove the cartridge, and manually remove any paper remaining in the printer.

Paper jam

- Press the  (BACK) to eject the paper. If the paper is not ejected, turn the power off and turn it on again. If the printer fails to eject the paper, contact a Canon Customer Support center for assistance.

Ink Error

- Remove the cartridge from the printer, take up the slack in the ink sheet, and then reload the cartridge. If the cartridge is stuck in the printer, contact a Canon Customer Support center for assistance.

Recharge the printer battery

- Change it with a fully charged battery pack or recharge the battery pack. You can also use the printer's compact power adapter.

Cannot print! / Could not print XX images

- **The following images cannot be printed.**
 - An image with a data size that is too big. Images larger than 8000 × 8000 pixels cannot be printed
 - An image that is corrupted
 - An image other than JPEG
- **When you want to print an image with the printer connected to the camera, check if the size of the image matches the recording pixels of the image in the camera. If the size is not appropriate, resize the image and convert it as necessary to a JPEG image that the camera can display.**
- **Limit the size of image files to less than 8000 × 8000 pixels.**

No Image.

- Check whether there are images recorded on the memory card.
- Check whether readable image data are recorded on the memory card.
- The image file name (folder name) sometimes cannot be recognized if it contains double-byte characters (Japanese, Chinese or Korean). Change double-byte characters to single-byte alphanumeric characters.
- Print data that has been edited or processed on a personal computer from the personal computer.


Hardware Error

- Check if there are other problems than cartridge problems.
- Turn the printer and camera power off, then turn on again. If the error message does not clear, contact a Canon Customer Support center for assistance.

Cartridge cover is open

- Close the cartridge cover. If the error message does not clear, turn the power off and on again.

This camera cannot print B/W
Insert memory card to print

- Black and white printing is not possible when a camera is connected (except when  (PictBridge) is displayed on the LCD monitor of the camera). Insert a memory card to print.

Cartridge has been changed

- The cartridge was changed for a cartridge of a different size after the print menu was displayed. Insert a cartridge of the same size or change the print settings.

Cartridge has been changed
Trim Setting Adjusted

- If the cartridge is changed after the trimming settings have been made, the printer automatically sets the trimming frame again to fit the paper size.

Cartridge not compatible

- Use a cartridge that is compatible with this printer.

Communication error

- Turn the printer, camera and computer power off, then turn on again.
- Check the Printing Images When Connected with Camera section in the Printer User Guide. If the error message continues to display, contact a Canon Customer Support center for assistance.

Disconnected

- Make sure that the printer and the sender are in appropriate distance.
- Check the sender's power supply.

Print output tray is full

- Remove accumulated paper from the print receptacle.

Cartridge incorrectly inserted or not loaded

- Load the cartridge.
- Remove the cartridge and insert the cartridge all the way, then close the cartridge cover.

Image too large.

- Images larger than 8,000 × 8,000 pixels, or 32 MB or larger files cannot be played back. Select another image.
- When printing from a mobile phone (wirelessly), the maximum image file size that can be transmitted is 3 MB (maximum file size varies depending on the mobile phone).

Incompatible JPEG.

- You attempted to play back or print an incompatible JPEG image. Select another image.

Memory card error

- Memory card has experienced an anomaly. Use another memory card.
- A memory card adapter without an inserted memory card has been inserted. Be sure to insert a memory card into the adapter before inserting it into the printer. If an empty adapter had been inserted, remove the adapter and turn the printer's power off and on again.
- Some memory cards require a specific adapter. You have inserted the memory card directly into the card slot without first inserting the card into the adapter.

Unidentified Image

- You attempted to play back or print an image with corrupted data, an image recorded in a foreign camera or data type, or an image that has been edited on a computer. Select another image.

Cannot magnify !

- You attempted to magnify an image with corrupted data, an image recorded with another camera or data type, or an image that has been edited on a computer, or a movie. Select another image.

Too many marks

- Too many images have been marked with print settings. Mark 998 or less images.

Cannot trim

- You attempted to trim an image smaller than 640 × 480 pixels or an image with a width-to-height ratio narrower than 16:9. Select another image to trim.

Image not compatible

- You attempted to put a speech bubble in an image smaller than 320 × 240 pixels or an image with a width-to-height ratio narrower than 16:9. Select another image size that allows speech bubbles to be set.

Device Not Supported

- This displays when you attempt to connect an unsupported USB device, e.g. USB memory. Disconnect the USB device.
- This displays when you attempt to transfer an image from a mobile phone using IrSimple. If your mobile phone supports another transfer method, switch to that method and transfer the image.

Device Not Supported (HUB)

- You attempted to connect an unsupported USB connector, e.g. a USB hub. Disconnect the USB hub.

Make everyone smile

“Recipes” for Printing

Here are some ‘recipes’ to help you create original greeting cards or scrapbooks to preserve those special memories.



For details on the functions used in the following pages, refer to the Printer User Guide after installing it from the supplied CD-ROM. Installation instructions for the Printer User Guide are on page 12 of this guide.

Sends photos as lovely postcards

Grandma, Grandpa...
It's my birthday!



* Share your feelings with

Original Greeting Cards

Ingredients

- Cartridge
(Postcard size is used for this sample.)
- Marker pen




Decorations

- [Frames] in [Creative Print]
or
Ulead Photo Express LE* (supplied software)
*Available for Windows Vista and Windows XP only

Instructions

● Using [Creative Print]

- 1 Press  and select [Frames]
- 2 Select the image to which you wish to add the frame
- 3 Select a desired frame, then print

● Using Ulead Photo Express LE (supplied software)

- 1 Select a desired frame and the image to which you wish to add the frame
- 2 Type a message and print the greeting card

The back of the paper is pre-printed for use as a postcard. Simply write an address and stick a stamp on the card.



Postcard size paper is used in this photo.

* Sharing my best recipes

Cooking Recipes


Ingredients

- Cartridge
- Mounting board, color-paper
- Marker pen
- Decorations

Decorations

- [Multi Layout] in [Creative Print]

Instructions

- 1 Press  and select [Multi Layout]
- 2 Select the page layout and background color
- 3 Select 2 images for the recipe and print them
- 4 Write down the menu or recipe in the white space of the photo with a marker pen
- 5 Mount the photo on mounting board and add decorations to your taste

As an extra touch...

Make a hole in the top corner of each finished recipe card, and tie them together with a ring or a ribbon.

* Fond memories kept close

Home-made Calendar


Ingredients

- Cartridge

Decorations

- [Calendar] in
[Creative Print]

Instructions

- 1 Press  and select [Calendar]
- 2 Select the page layout and background color
- 3 Set the details of the calendar
- 4 Select an image for the calendar and print



Postcard size paper is used in this photo.

Make the most of your memories...

Went to the sea with a family friend for a vacation.
We swam and surfed every day,
completely forgetting about time
as we whiled away the days having a great time.

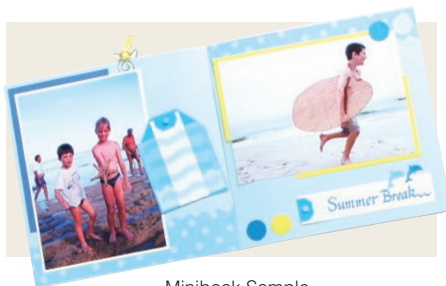


* Enhance your photo collection

Scrapbooks

Ingredients

- Cartridge
- Mounting board, color-paper
- Scissors, glue, pens
- Decorations



Minibook Sample

Instructions

- 1 Decide on a theme for your page (e.g. summer holiday, birthday party, etc.)
- 2 Print your photos based on the theme
- 3 Select the color of mounting board for the background to go with your photos
- 4 Design the layout of your page
- 5 Cut your photos and color-paper, arrange and mount them on the mounting board
- 6 Add decorations and, if desired, write the title and any comments

Combining different size photos can be visually effective.

FCC Notice

(Printer, Model CD1030/CD1031 Systems)

This device complies with Part 15 of the FCC Rules. Operation is subject to the following two conditions;

- (1) this device may not cause harmful interference, and
- (2) this device must accept any interference received, including interference that may cause undesired operation.

Note: This equipment has been tested and found to comply with the limits for Class B digital devices, pursuant to Part 15 of the FCC rules. These limits are designed to provide reasonable protection against harmful interference in a residential installation. This equipment generates, uses and can radiate radio frequency energy and, if not installed and used in accordance with the instructions, may cause harmful interference to radio communications. However, there is no guarantee that interference will not occur in a particular installation. If this equipment does cause harmful interference to radio or television reception, which can be determined by turning the equipment off and on, the user is encouraged to try to correct the interference by one or more of the following measures:

- Reorient or relocate the receiving antenna.
- Increase the separation between the equipment and receiver.
- Connect the equipment into an outlet on a circuit different from that to which the receiver is connected.
- Consult the dealer or an experienced radio/TV technician for help.

The cable with the ferrite core provided with the digital camera must be used with this equipment in order to comply with Class B limits in Subpart B of Part 15 of the FCC rules. Do not make any changes or modifications to the equipment unless otherwise specified in the manual. If such changes or modifications should be made, you could be required to stop operation of the equipment.

Canon U.S.A., Inc.

One Canon Plaza, Lake Success, NY 11042, U.S.A.

Tel No. (516) 328-5600

Canadian Radio Interference Regulations

This Class B digital apparatus complies with Canadian ICES-003.

Réglementation canadienne sur les interférences radio

Cet appareil numérique de la classe B est conforme à la norme NMB-003 du Canada.