



## Note

Please note that the illustrations of the fax in this guide may differ from your model.

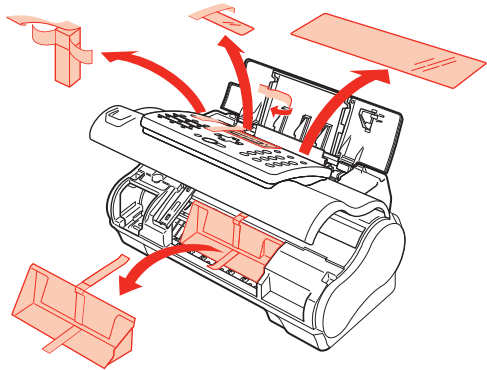
## Important

When cleaning the exterior of the machine, use a soft cloth to wipe it gently. For details, refer to "Cleaning Your Machine" in "Routine Maintenance" of the *User's Guide*.

## 1 Prepare the Machine

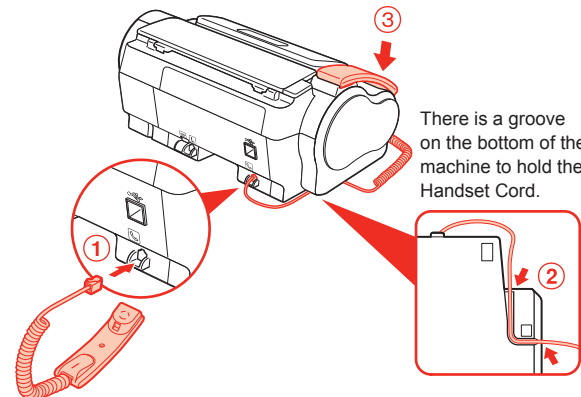
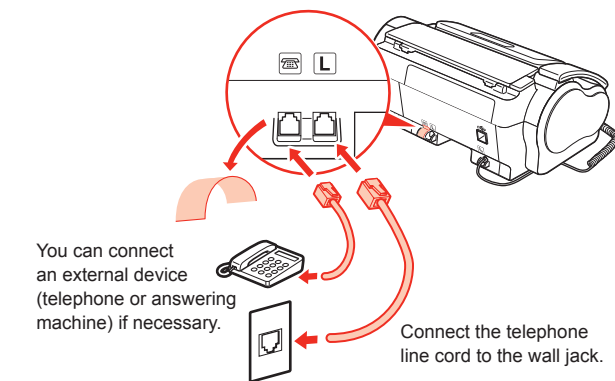
**1** **Unpack the Machine.**

Confirm the included items against the illustration printed on the lid of the packing box.

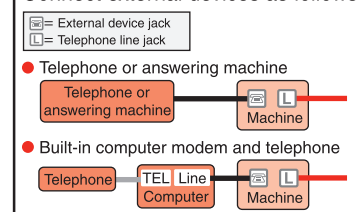
**2** **Open the Cover and remove the protective materials.**

## Note

The actual protective materials may differ in shape, quantity, and position from the ones shown in the illustration above.

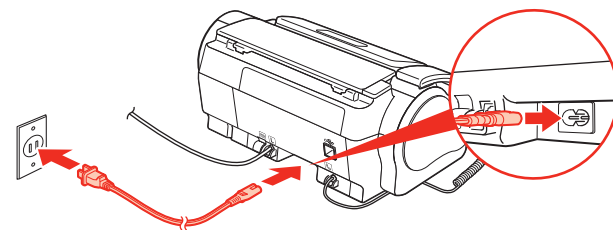
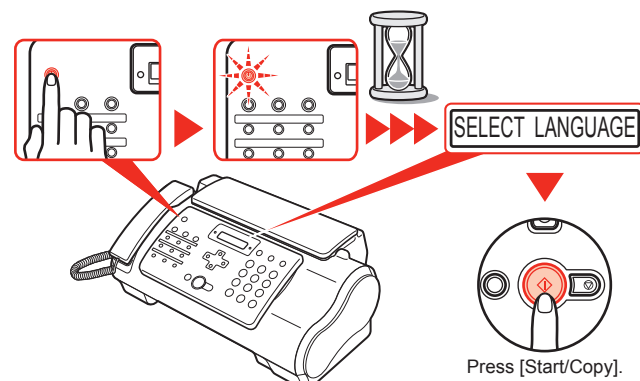
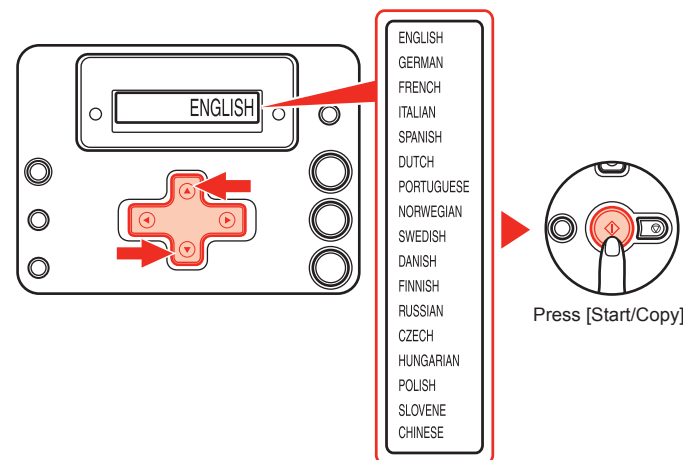
**3** **Connect the Handset to the jack, and place it in its cradle.****4** **Connect the telephone line and any necessary external device.**  
For more details, see "Step 5" on the back of this sheet.

## Connect external devices as follows

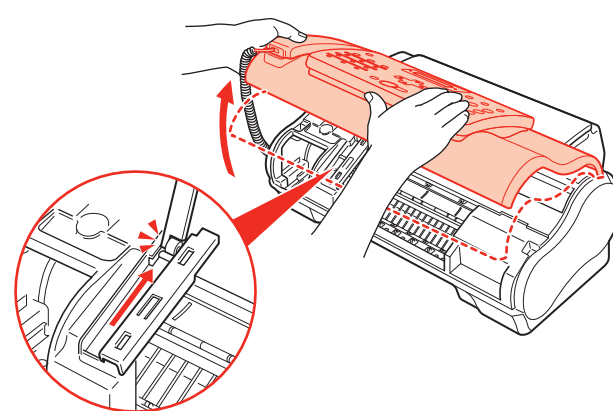
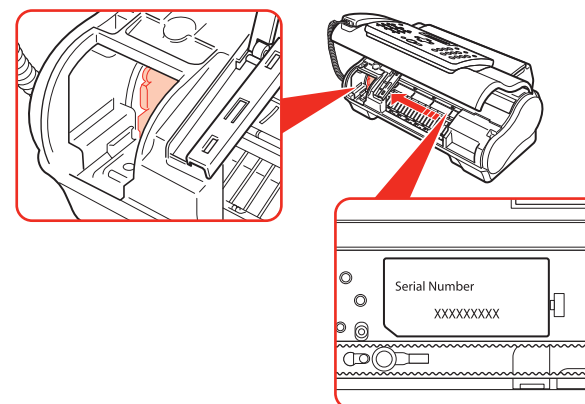


## Important

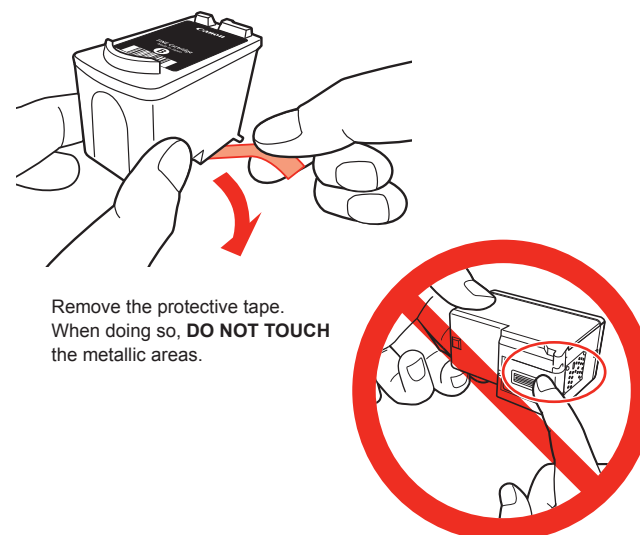
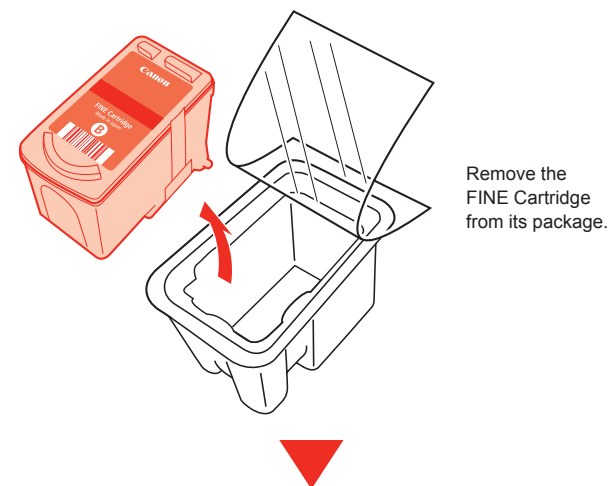
Be sure to use supplied telephone line cable.

**5** **Plug the power cord into the back of the machine and connect the other end to a power outlet.****6** **Press [ON], wait until the LCD displays <SELECT LANGUAGE>, then press [Start/Copy].****7** **Use [▲] or [▼] on the Operation Panel to select the language for the LCD, then press [Start/Copy].**

## 2 Install the FINE Cartridge

**1** **Lift the Cover until it locks into place.****2** **When the Cover is opened, the Holder will move to the left.**

**Caution**  
Do not touch internal parts other than the Holder.

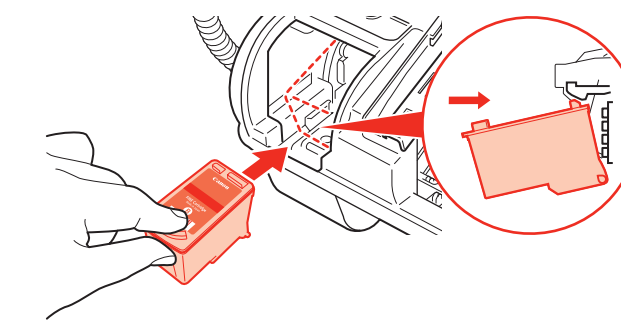
**3** **Prepare the FINE Cartridge.**

Remove the protective tape.  
When doing so, **DO NOT TOUCH** the metallic areas.

**4** **Insert the FINE Cartridge slightly slanted into the Holder.**

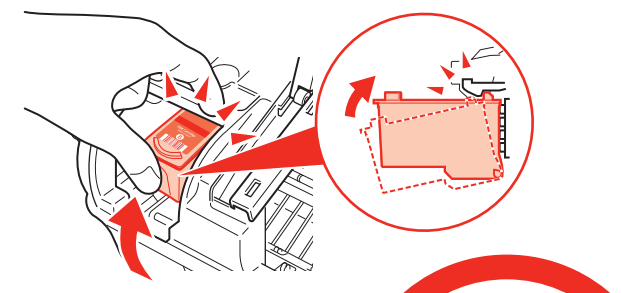
## Important

- Make sure the machine is turned on and [ON] lights green.
- Make sure the Holder has moved to the left.

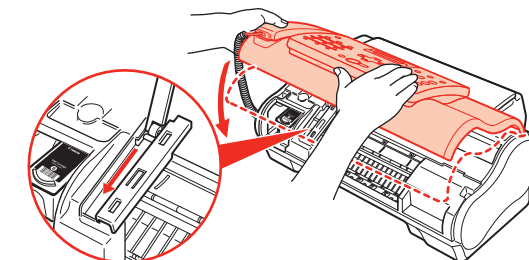
**5** **Push up the FINE Cartridge until it clicks into place.**

## Important

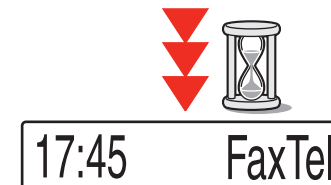
- If the Holder moves to the right side, close and reopen the Cover to return the Holder to the left.



**DO NOT** put the head of the FINE Cartridge downward into the Holder.

**6** **Close the Cover.**

Wait until the preparation operation is completed: this takes about one to two minutes.

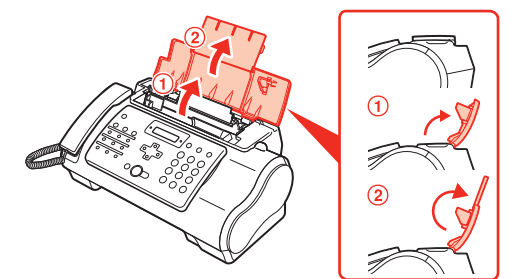
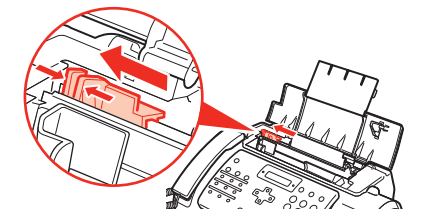
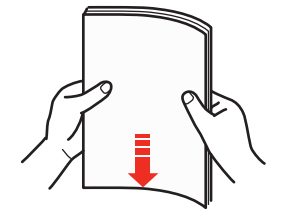
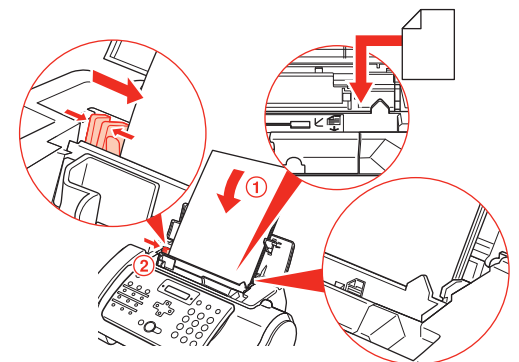


Before using your machine, enter the date and time correctly. For details, refer to "Entering the Date and Time" in "Before Using Your Machine" of the *User's Guide*.

## Note

- If an error message is displayed on the LCD, refer to "LCD Messages" in "Troubleshooting" of the *User's Guide*.
- The machine may make some operating noises when preparing to print. This is normal operation.

## 3 Loading Paper

**1** **Open the Document Cover and extend the Paper Support to support the paper.****2** **Squeeze, then slide the Paper Guide to the left.****3** **Tap the edge of the stack on a flat surface to even the stack.****4** **Insert the stack face up into the Rear Tray ①, and align the right edge of the stack with the right side of the Rear Tray. Then slide the Paper Guide ② snugly against the left edge of the stack.****Turn Over**

For the instructions for Setting Receive Mode, Connecting the Machine, and Software Installation.



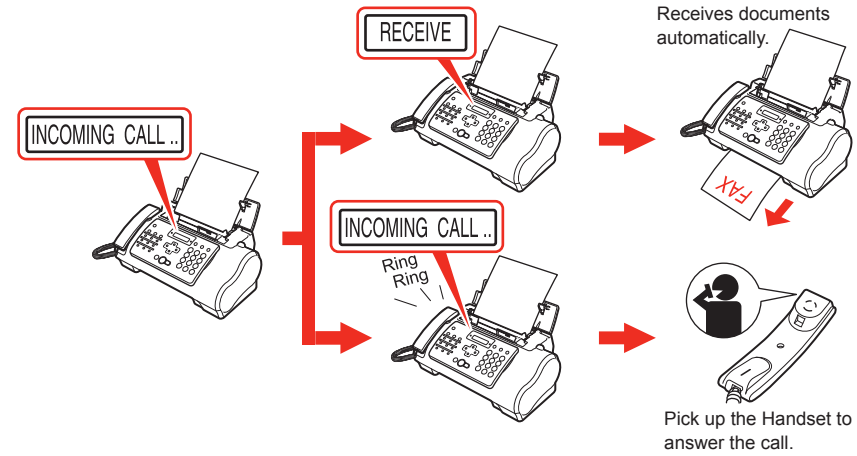
## 4 Setting Receive Mode

Press [Receive Mode/Resolution] to change the receive mode.

**Note**

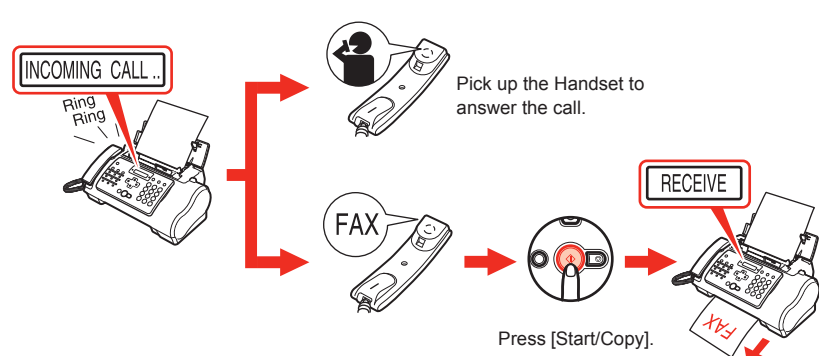
- For details on ANS.MACHINE MODE, refer to "Receiving Documents with an Answering Machine: <ANS.MACHINE MODE>" in "Receiving Faxes" of the *User's Guide*.
- For details on DRPD, refer to "Receiving with a DRPD (Distinctive Ring Pattern Detection) service: <DRPD>" in "Receiving Faxes" of the *User's Guide*.

● **Fax/Tel Mode** 17:45 FaxTel



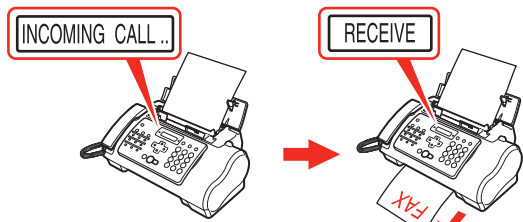
Automatically switches between fax and voice calls.  
Receives documents automatically and rings for voice calls.

● **MANUAL MODE** 17:45 Manual



Rings for every call, regardless of whether the call is a fax call or a voice call.  
For a fax call, you have to manually activate reception of the fax.

● **FAX ONLY MODE** 17:45 FaxOnly



Answers all calls as fax calls.  
Receives documents automatically and disconnects voice calls.

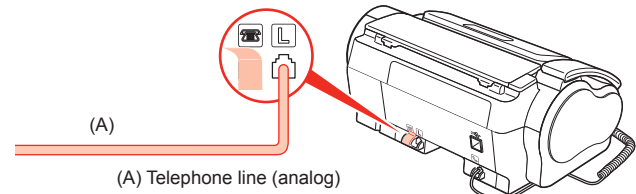
## 5 Examples of Connecting the Machine

Typical examples of connecting the machine are described below.  
The machine cannot send/receive faxes if the connection is incorrect. Connect the machine correctly.

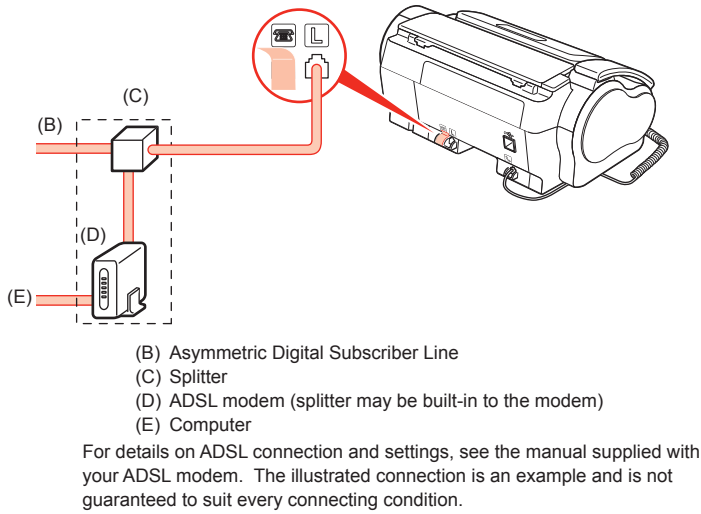
The following are examples of the type of connecting that can be made.

● **Connecting to the Telephone Line**

● **Connecting to an Analog Line**

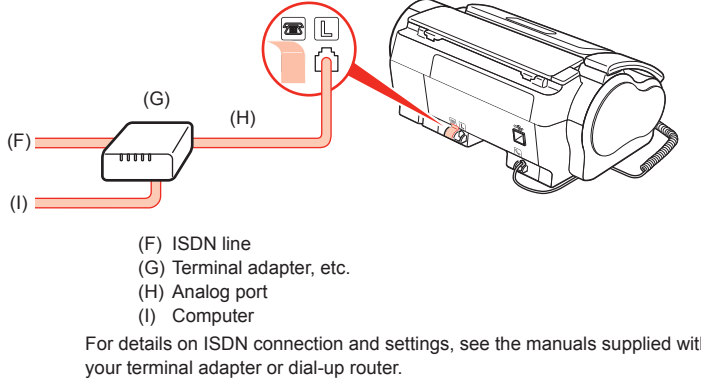


● **Connecting to an ADSL**



For details on ADSL connection and settings, see the manual supplied with your ADSL modem. The illustrated connection is an example and is not guaranteed to suit every connecting condition.

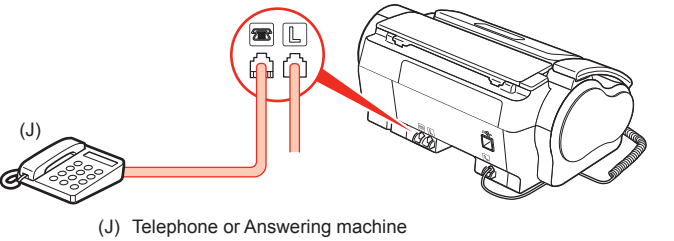
● **Connecting to an ISDN Line**



For details on ISDN connection and settings, see the manuals supplied with your terminal adapter or dial-up router.

● **Connecting External Devices**

● **Connecting a Telephone or Answering Machine Directly**



Take off the protective tape on the back of the machine when you connect an external device.

## Software Installation

The appearance of the screen may differ depending on the country/region of use and on your language.  
Follow the on-screen instructions to proceed with the installation.

To use the machine by connecting it to a computer, software including the drivers needs to be copied (installed) to the computer's hard disk.

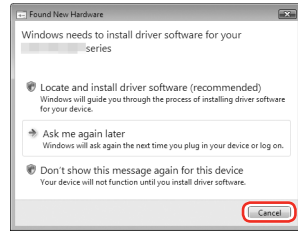
The screens below are based on Windows Vista operating system Ultimate Edition (hereafter referred to as "Windows Vista").

**Important**

- The machine is not compatible with Macintosh computers.
- Quit all running applications before installation.
- You need to log on as the administrator (or a member of the Administrators group).
- Do not switch users during the installation process.
- It may be necessary to restart your computer during the installation process. Follow the on-screen instructions and click OK, and do not remove the Setup CD-ROM during restarting.
- The installation resumes from where it left off when your computer has been restarted.

If the Found New Hardware or Found New Hardware Wizard screen appears:

- Remove the USB cable connected to your computer. The screen may close. In this case, proceed from 1.
- Click **Cancel** to quit the screen.
- Proceed from 1.



1 Press [ON] to turn off the machine.

**Important**

Operating noise continues for about 40 seconds until the power turns off. Make sure that [ON] stops flashing.

2 Turn on the computer, then insert the Setup CD-ROM into the CD-ROM drive.

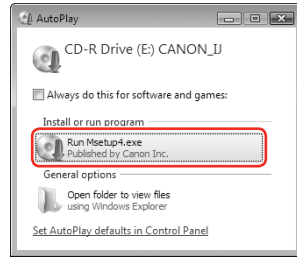
The setup program should run automatically.

In Windows Vista, go to Step 3. In Windows XP and Windows 2000, go to Step 5.

**Note**

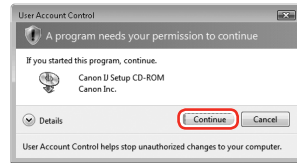
If the program does not start automatically, double-click the CD-ROM icon on the computer. When the CD-ROM contents appear, double-click **MSETUP4.EXE**.

3 AutoPlay screen appears, click **Run Msetup4.exe**.



4 User Account Control screen appears, click **Continue**.

If the same screen reappears in subsequent steps, click **Continue**.



5 Click **Easy Install**.

The printer driver and On-screen Manual are installed automatically.



**Note**

If you want to select particular items to install, click **Custom Install** and follow the on-screen instructions to proceed with the installation.

6 When the list of software to install appears, confirm the contents, click **Install**.

Move the cursor over items to display explanations.

7 Read the **License Agreement** screen carefully, and click **Yes**.

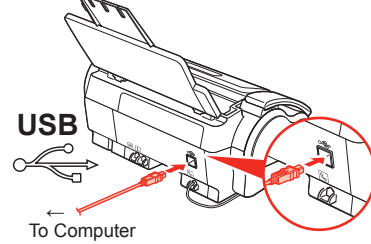
**Important**

Follow any on-screen instructions to install the software.

8 When the **Please Allow All Install Wizard Processes** screen appears, confirm the message, and click **Next**.

Installation starts.

9 When the **Printer Connection** screen appears, connect one end of the USB cable to the computer, the other to the machine, then turn the machine on.



**Important**

- It takes about 60 seconds for [ON] to light green.
- When the machine is recognized by the computer, a message appears on the screen.
- If you cannot go to the next procedure after 10 minutes, click **Help** and confirm the message.

**Note**

The USB port is located on the right side of the back of the machine.

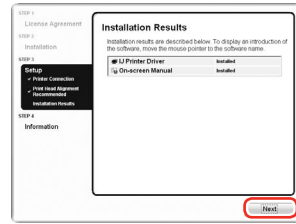
10 When the **Print Head Alignment Recommended** screen appears, click **Next**.

**Note**

If straight lines are misaligned or print quality is not satisfactory after installing the printer driver, you may need to align the Print Head. Refer to "Aligning the FINE Cartridge" in "Routine Maintenance" of the *User's Guide* or *On-screen Manual*.

11 Click **Next**.

It may take a while for the next screen to appear. Click **Next** only once.



12 When the **Extended Survey Program** screen appears, confirm the message.

If you can agree, click **Agree**.

If you click **Do not agree**, the **Extended Survey Program** will not be installed. (This has no effect on the machine's functionality.)

13 When the **Installation completed successfully** screen appears, click **Exit**. Remove the Setup CD-ROM after clicking **Exit**.

If **Restart** is displayed, make sure that the **Restart the system now (recommended)** check box is selected, then click **Restart**. After restarting the computer, remove the Setup CD-ROM.

**Note**

Keep the Setup CD-ROM in a safe place in case you need to reinstall the software.

**Software installation is now complete.**