

EOS Utility

Ver. 2.6



1Ds Mk III

1D Mk III

5D Mk II

50D

40D

REBELT_i

500D

REBELXS_i

450D

REBELXS

1000D

Instruction Manual

● Content of this Instruction Manual

- EU is used for EOS Utility.
- Camera model is displayed as an icon.
Example: EOS-1D Mark III →
- displays the relevant camera model.
- In this manual, the windows used in the examples are from Windows Vista.
- The selection sequence of menus is displayed in ► procedures.
(Example: Select the [Window] menu ► [Main Window].)
- Square brackets are used to indicate items such as menu names, button names and window names that appear on the computer screen.
- Text inside < > indicates a camera switch name or icon, or a keyboard key name.
- ** indicates a reference page.
Click to move to the relevant page.
- : Marks information that should be read before use.
- : Marks additional information you may find helpful.

● Switching Between Pages

- Click on arrows on the bottom right of the screen.
 - : next page
 - : previous page
 - : return to a page you had previously displayed
- Click on the chapter headings on the right side of the screen to switch to the contents page of that chapter. Also, click the item you want to read about on the table of contents to move to the relevant page.

Introduction

Contents at a Glance

Downloading Images

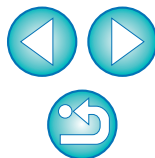
Camera Settings

Remote Shooting

Preferences

Reference

Index



READ CAREFULLY BEFORE USING!

CANON SOFTWARE LICENSE AGREEMENT

IMPORTANT - READ THIS AGREEMENT BEFORE USING THE SOFTWARE ON THE CD-ROM IN THIS BOX. BY USING THE SOFTWARE, YOU AGREE TO BE BOUND BY THE TERMS OF THIS AGREEMENT.

This is a license agreement (the [Agreement]) between you and Canon Inc. ([Canon]).

IF YOU DO NOT AGREE TO THE TERMS AND CONDITIONS OF THIS AGREEMENT, DO NOT USE THE SOFTWARE PROGRAM ON THE CD-ROM AND THE USER MANUAL IN THIS BOX (COLLECTIVELY, THE [SOFTWARE]) AND RETURN THE SOFTWARE WITHIN 30 DAYS FROM THE DATE OF PURCHASE TO YOUR POINT OF PURCHASE FOR A REFUND.

In consideration of the right to use the SOFTWARE, you agree to abide by the terms and conditions of this Agreement.

1. **LICENSE:** Canon grants you the non-exclusive right to use the SOFTWARE only on a single computer. You may physically transfer the SOFTWARE from one computer to another provided that the SOFTWARE is used on only one computer at a time. You shall not install or use the SOFTWARE on a network, multiple CPU, multiple site arrangement, or any other hardware configuration where the SOFTWARE is accessible to more than one CPU or to more than one user.

YOU SHALL NOT ASSIGN, SUBLICENSE, RENT, LEASE, LOAN, CONVEY OR OTHERWISE USE, TRANSFER, COPY, TRANSLATE, CONVERT TO ANOTHER PROGRAMMING LANGUAGE, ALTER, MODIFY, DECOMPILE OR DISASSEMBLE THE SOFTWARE, IN WHOLE OR IN PART, EXCEPT AS EXPRESSLY PROVIDED IN THIS AGREEMENT.

2. **BACK-UP COPY:** You may make one copy of the SOFTWARE solely for back-up purposes, or copy the SOFTWARE onto the permanent storage device (e.g. a hard disk) of your computer and retain the original for back-up purposes. Any other copying of the SOFTWARE is a violation of this Agreement. You must reproduce and include the copyright notice on the back-up copy.

3. **SUPPORT AND UPDATES:** Canon is not responsible for providing maintenance or support for use of the SOFTWARE. No updates, fixes or support will be made available for the SOFTWARE.

4. **LIMITED WARRANTY AND LIMITATION OF LIABILITY:** It is your responsibility to choose, maintain and match the hardware and software components of your computer system. Thus Canon does not guarantee uninterrupted service or correction of errors or that the functions or performance of the SOFTWARE will meet your requirements. THE SOFTWARE IS LICENSED ON AN [AS IS] BASIS AND WITHOUT WARRANTY OF ANY KIND. The CD-ROM storing the SOFTWARE is warranted only against defective material under normal use for a period of ninety (90) days after purchase from an authorized Canon dealer as evidenced by your sales receipt. Your sole remedy for a defective CD-ROM shall be replacement of the same without charge when returned by you at your expense to your point of purchase and proven to be defective upon inspection. The replacement CD-ROM will be warranted for the remainder of the original ninety (90) day warranty period of the defective CD-ROM. The limited warranty does not apply if the failure of the CD-ROM resulted from accident, abuse or misapplication of the SOFTWARE and shall not extend to anyone other than the original user of the SOFTWARE.

EXCEPT AS SPECIFICALLY SET FORTH IN THIS PARAGRAPH 4, CANON, CANON'S SUBSIDIARIES, DISTRIBUTORS AND DEALERS DISCLAIM ALL WARRANTIES, EXPRESS OR IMPLIED, INCLUDING ANY WARRANTY OF MERCHANTABILITY OR FITNESS FOR A PARTICULAR PURPOSE, WITH RESPECT TO THE SOFTWARE.

NEITHER CANON NOR ANY OF CANON'S SUBSIDIARIES, DISTRIBUTORS OR DEALERS IS LIABLE FOR ANY DAMAGES HOWSOEVER CAUSED, INCLUDING WITHOUT LIMITATION, DIRECT, CONSEQUENTIAL OR INCIDENTAL LOSS OR DAMAGE INCLUDING LOSS OF

PROFITS, EXPENSE OR INCONVENIENCE HOWSOEVER CAUSED OR ARISING OUT OF THE SOFTWARE OR THE USE THEREOF.

NEITHER CANON, NOR ANY OF CANON'S SUBSIDIARIES, DISTRIBUTORS OR DEALERS SHALL HAVE ANY OBLIGATION TO INDEMNIFY YOU AGAINST ANY CLAIM OR SUIT BROUGHT BY A THIRD PARTY ALLEGING THAT THE SOFTWARE OR THE USE THEREOF INFRINGES ANY INTELLECTUAL PROPERTY OF SUCH THIRD PARTY.

5. **TERM:** This Agreement is effective upon your using the SOFTWARE and remains in effect until expiration of all copyright interests in the SOFTWARE unless earlier terminated. You may terminate this Agreement by destroying the SOFTWARE. This Agreement will also terminate without notice to you if you fail to comply with any of the terms of this Agreement and you must then promptly return the SOFTWARE. In addition, Canon may enforce its other legal rights.

6. **U.S. GOVERNMENT RESTRICTED RIGHTS NOTICE:** The SOFTWARE is provided with restricted rights. Use, duplication or disclosure is subject to restrictions as set forth in either subparagraph (c) (1) (ii) of the Rights in Technical Data and Computer software clause at DFARs 252.227-7013 or subparagraph (c) (1) and (2) of the Commercial Computer Software Restricted Rights Clause at FAR 52.227-19, as applicable.

7. **SEVERABILITY:** In the event that any provision of this Agreement is declared or found to be illegal by any court or tribunal of competent jurisdiction, such provision shall be null and void with respect to the jurisdiction of that court or tribunal and all the remaining provisions of this Agreement shall remain in full force and effect.

8. **CONTROLLING LAW:** The terms of this Agreement as it relates to purchases of the Software in the United States of America shall be governed and construed in all respects in accordance with the laws and regulations of the State of New York, without reference to choice of law principles. The terms of this Agreement as it relates to purchases of the Software in Canada shall be governed by the laws of the province of Ontario.

9. **OWNERSHIP:** All rights, including but not limited to copyrights and trade secret rights, to the SOFTWARE belong to Canon, its affiliated corporations and third party licensors. Your use of the SOFTWARE is subject to the United States, Canada and other applicable copyright and trademark laws and nothing in this Agreement constitutes a waiver of the rights of Canon, its affiliated corporations and third party licensors under such laws. Nothing contained in Paragraph 1 shall be construed to give Canon any ownership rights in any images, graphics or textual material that you save in connection with the Software.

10. **ACKNOWLEDGEMENT:** BY USING THE SOFTWARE, YOU ACKNOWLEDGE THAT YOU HAVE READ THIS AGREEMENT, UNDERSTOOD IT, AND AGREE TO BE BOUND BY ITS TERMS AND CONDITIONS. YOU ALSO AGREE THAT THIS AGREEMENT IS THE COMPLETE AND EXCLUSIVE STATEMENT OF AGREEMENT BETWEEN YOU AND CANON CONCERNING THE SUBJECT MATTER HEREOF AND SUPERSEDES ALL PROPOSALS OR PRIOR AGREEMENTS, VERBAL OR WRITTEN, AND ANY OTHER COMMUNICATIONS BETWEEN THE PARTIES RELATING TO THE SUBJECT MATTER HEREOF. NO AMENDMENT TO THIS AGREEMENT SHALL BE EFFECTIVE UNLESS SIGNED BY A DULY AUTHORIZED OFFICER OF CANON.

Introduction

Contents at
a Glance

Downloading
Images

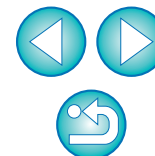
Camera
Settings

Remote
Shooting

Preferences

Reference

Index



EOS Utility (hereinafter EU) is software for communication with your EOS DIGITAL camera. By connecting the camera and computer with the cable provided with the camera, you can download to your computer images saved in the camera's memory card as well as set various camera settings or shoot remotely from EU on your computer.

Main Features of EU

From EU, you can control the camera remotely and perform the following main features.

- **Batch download to your computer images saved in the camera's memory card.**
 - You can also download to your computer only images you have selected.
- **Set various camera settings from your computer.**
- **Shoot remotely by controlling the camera from your computer.**
 - Remote Live View shooting – Shoot while checking your subject in real time on your computer.
 - You can also shoot remotely by operating the camera's shutter button.
 - Preset a time allowing the camera to shoot automatically with timer shooting.
- **When downloading images or shooting remotely, view/check images with the linked Digital Photo Professional.**

System Requirements

OS	Windows Vista ^{*1} Windows XP Professional/Home Edition ^{*2}
Computer	PC with one of the above OS preinstalled and a USB port as a standard feature (Upgraded machines not supported) * .NET Framework 2.0 or later is required. ^{*3}
CPU	1.3GHz Pentium or higher
RAM	Minimum 1GB
Interface	Hi-Speed USB
Display	Screen resolution: 1024 × 768 pixels or more Color quality: Medium (16 bit) or more

^{*1} Compatible with 32-bit/64-bit systems for all versions except Starter Edition (Also compatible with Service Pack 1)

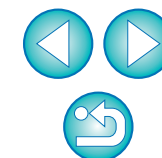
^{*2} Compatible with Service Pack 2/Service Pack 3

^{*3} .NET Framework is Microsoft software. It is installed together with EU.

Supported Camera

Can be used for RAW images, JPEG images or MOV movies shot with the cameras below.

EOS-1Ds Mark III	EOS-1D Mark III
EOS 5D Mark II	EOS 50D
EOS 40D	EOS REBEL T1i/500D
EOS DIGITAL REBEL XSi/450D	EOS DIGITAL REBEL XS/1000D

[Introduction](#)[Contents at a Glance](#)[Downloading Images](#)[Camera Settings](#)[Remote Shooting](#)[Preferences](#)[Reference](#)[Index](#)



Contents at a Glance

Downloading images from your camera to a computer

- To batch download all the images to a computer → p.6
- To download to a computer selected images only → p.7
- To download images using a third-party card reader → p.9

Camera settings from a computer

- To set the camera owner's name, copyright notice and date/time → p.12
- To set a Picture Style and apply to the camera → p.16
- To apply a Picture Style file to the camera → p.18
- To register a personal white balance in the camera → p.19
- To set a JPEG quality and apply to the camera → p.20
- To adjust a white balance setting and apply to the camera → p.21
- To register peripheral illumination correction data for the lens in the camera → p.21
- To set My Menu and apply to the camera → p.22

Remote shooting

- To shoot by controlling the camera from a computer (Remote Live View shooting) → p.25
- To shoot with accurate horizontal/vertical alignment → p.35
- To change the aspect ratio and shoot → p.35
- To shoot by operating the camera → p.36
- To shoot movies → p.37
- To shoot with the timer → p.40

Functions for use with other accessories sold separately

- To shoot with the Wireless File Transmitter WFT-E2/E2A, E3/E3A or E4/E4A and check the images in real time → p.48
- To start up the WFT-E2/E2A, E3/E3A or E4/E4A software from EU → p.49
- To start up the Original Data Security Kit OSK-E3 software from EU → p.49

Introduction

Contents at a Glance

Downloading Images

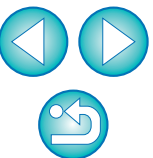
Camera Settings

Remote Shooting

Preferences

Reference

Index



1 Downloading Images to your Computer



Basic operation such as preparing for downloading images to your computer (connecting your camera and computer), starting up EU, downloading images from your camera to your computer and exiting EU are explained here.

Connecting the Camera and Computer	5
Starting up EU	5
Batch Downloading Images to Your Computer	6
Downloading Selected Images to Your Computer	7
Downloading Images with a Card Reader	9
Downloading Images Using Digital Photo Professional	9
Downloading Images Using ZoomBrowser EX	9
Downloading Images without Using Canon Software	9
Exiting EU	10

Introduction

Contents at
a Glance

1
Downloading
Images

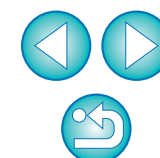
2
Camera
Settings

3
Remote
Shooting

4
Preferences

Reference

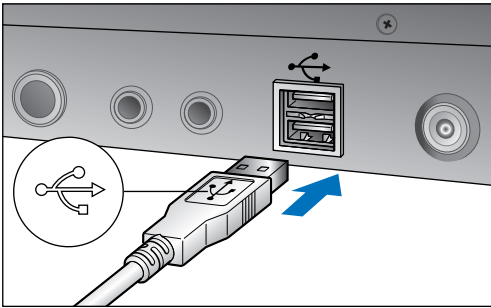
Index



Connecting the Camera and Computer

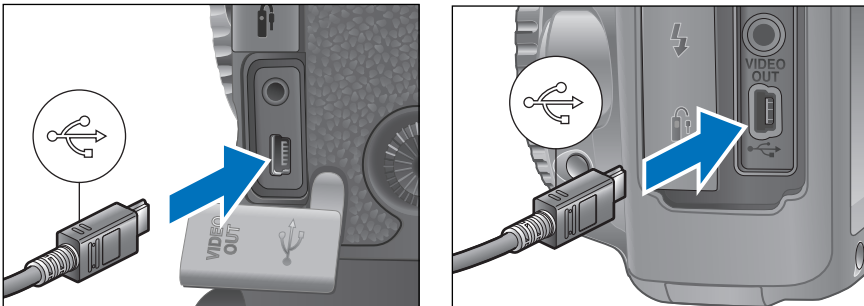
To download to your computer images shot with your camera, you will need to connect your camera and computer using the interface cable provided with your camera.

1 Connect the large plug of the cable into the USB port of your computer.



- For the location and direction of the USB port, refer to the computer User's Manual.

2 Connect the small plug of the cable into the < USB > terminal on your camera.

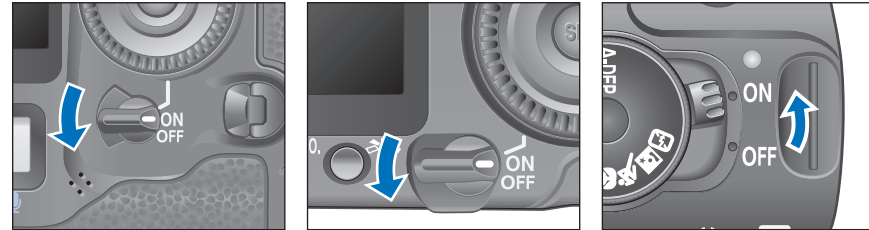




- Connect the plug with the < USB > mark facing the front of the camera.
- Image downloading preparation is now complete. Continue with "Starting up EU".
- With **1Ds Mk III** **1D Mk III**, you can fix the plug to the camera with the cable protector to prevent the plug from disconnecting. For details on using, refer to [p.51](#).

Starting up EU

When the camera's power switch is set to < ON >, EU will start up, and the camera and computer will be able to communicate.

1 Set the camera's power switch to < ON >.



- Communication between the camera and the computer begins and the dialog box in step 2 ([Next page](#)) is displayed.
- If the window in step 2 is not displayed even when you set the camera's power switch to < ON >, double-click the [EOS Utility] icon on your desktop to start up EU.
- **REBELTi** **500D** cannot communicate with EU if the camera's mode dial is set to <  >. Set the mode dial to a mode other than <  >.

Introduction

Contents at a Glance

Downloading Images

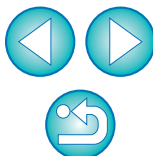
Camera Settings

Remote Shooting

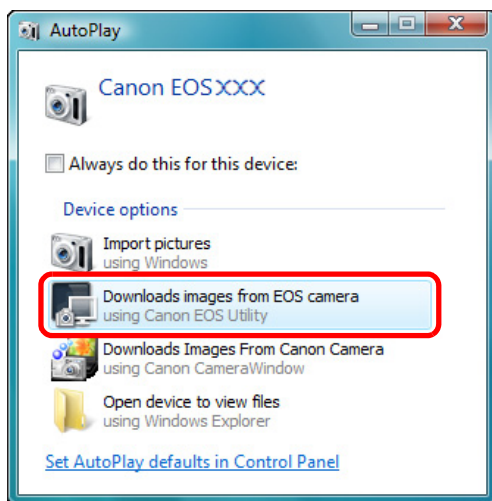
Preferences

Reference

Index



2 Click [Downloads images from EOS camera].



EU Main window



→ EU starts up, the main window appears, and your camera and computer can now communicate. Continue with “Batch Downloading Images to Your Computer”.

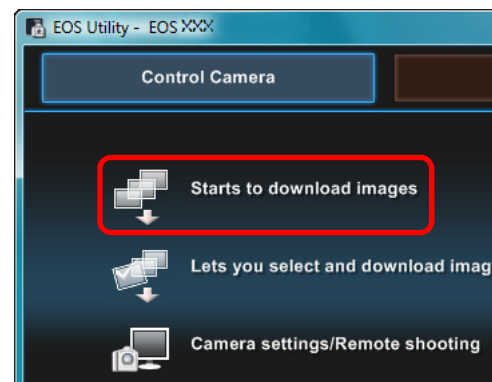
- In Windows XP, select [Canon EOS Utility] and then click the [OK] button to start up EU.
- When [Always do this for this device] ([Always use this program for this action] in Windows XP) is checkmarked, from the next time you connect your camera and computer, EU will start when you set your camera's power switch to < ON >.
- The camera's LCD monitor turns on when EU starts up.
- You can operate the camera and download images saved on the memory card inserted in the camera to your computer. Refer to your camera's Instruction Manual for details.

Batch Downloading Images to Your Computer

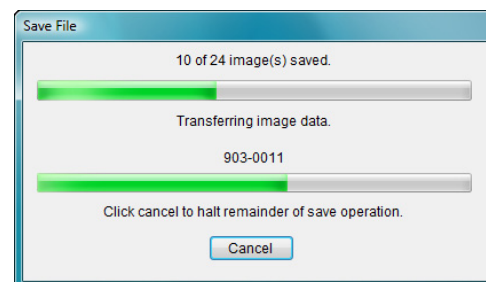
You can batch download to your computer all the images saved on the memory card inserted in the camera that you have not already downloaded.

The downloaded images are sorted by date into folders and are then displayed in the main window of Digital Photo Professional (RAW image processing, viewing and editing software) (hereinafter DPP), which is linked to start up automatically, where you can check them immediately.

1 Click [Starts to download images].



Save File dialog box



- The [Save File] dialog box appears and image downloading to your computer begins.
- The downloaded images are saved in the [My Pictures] folder.
- When all images have been downloaded, DPP starts up automatically and the downloaded images are displayed in DPP's main window.

Introduction

Contents at a Glance

Downloading Images

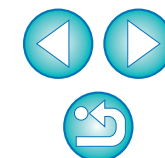
Camera Settings

Remote Shooting

Preferences

Reference

Index



2 Check the downloaded images.

DPP Main window

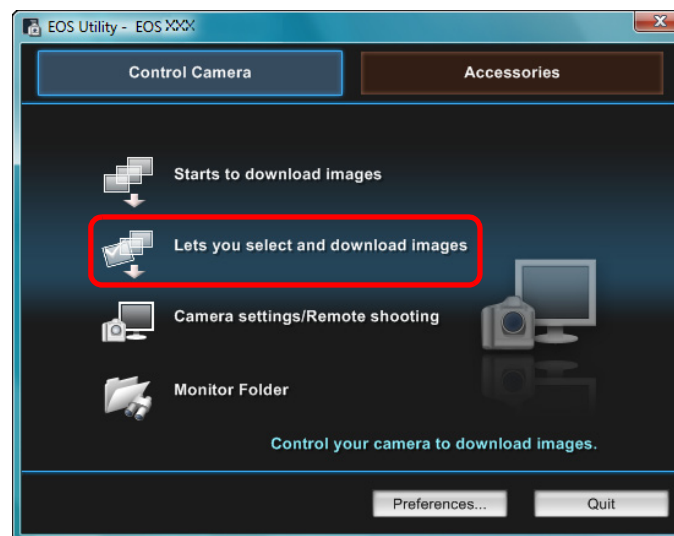


- Check the downloaded images in DPP.
For details on using DPP, refer to the “Digital Photo Professional Instruction Manual” (PDF electronic manual).
- Continue with “Exiting EU” (p.10).

Downloading Selected Images to Your Computer

From the images saved in your camera's memory card, you can select the ones you want and download them to your computer.

1 Click [Lets you select and download images].



→ A viewer window appears and the images in the memory card are displayed.



- When you download images, you can change the software that starts up from DPP to ZoomBrowser EX or another software (p.45).
- You can change images downloaded and the save destination (p.44, p.45).
- Downloading movie files may take some time due to the large file size.

Introduction

Contents at a Glance

Downloading Images

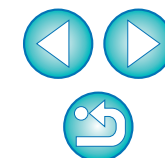
Camera Settings

Remote Shooting

Preferences

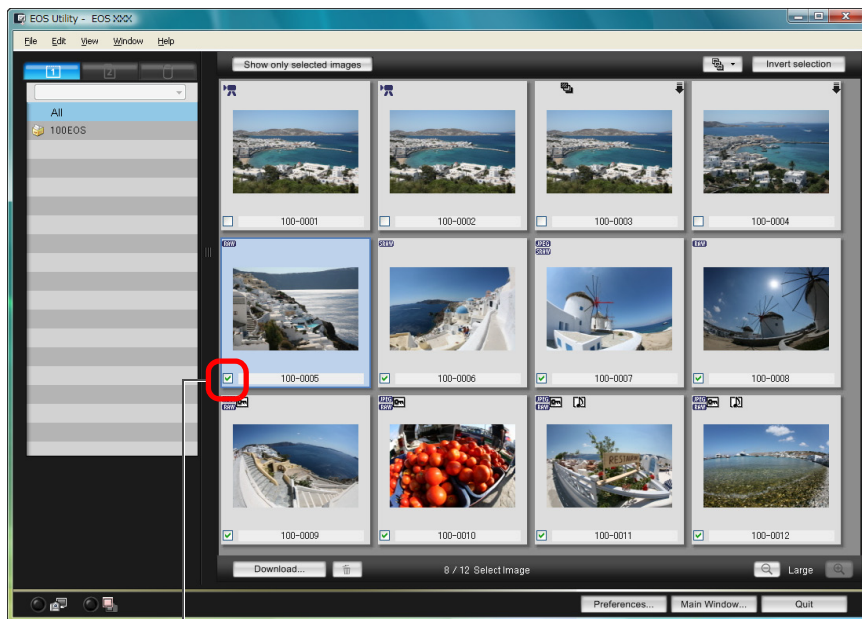
Reference

Index



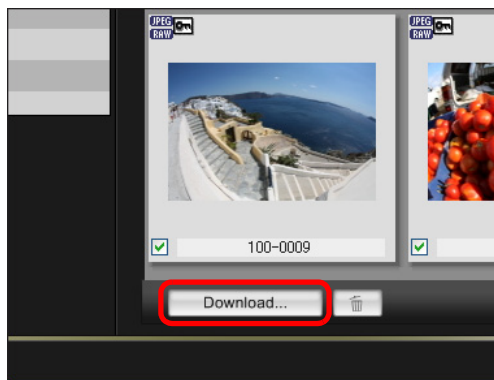
2 View the images and checkmark images to download.

Viewer window



Add check mark

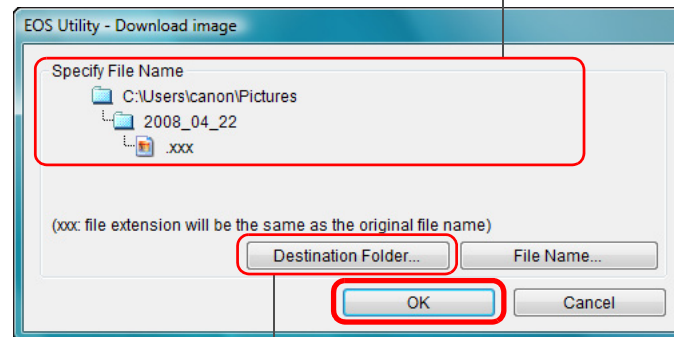
3 Click the [Download] button.



→ The [Download image] dialog box appears.

4 Specify the save destination and then click the [OK] button.

Displays the save destination on the computer
Download image dialog box



Specify the save destination

→ The [Save File] dialog box appears and image downloading to your computer begins.

Introduction

Contents at a Glance

Downloading Images

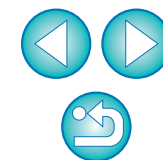
Camera Settings

Remote Shooting

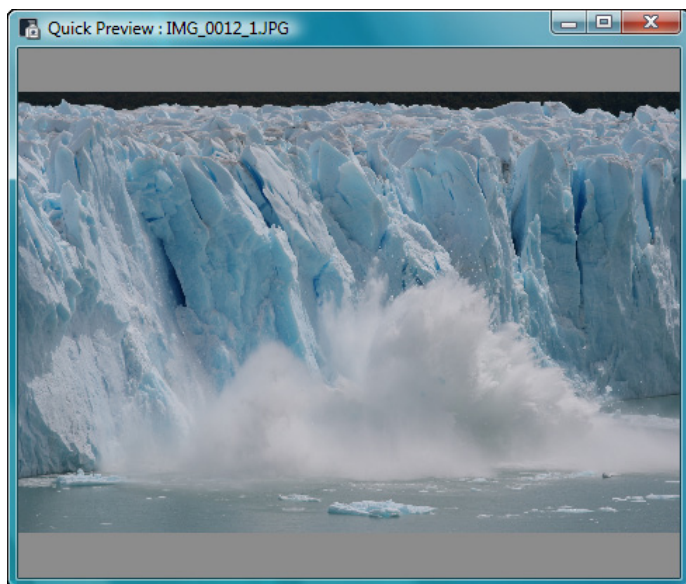
Preferences

Reference

Index






- The images downloaded to your computer are displayed in the [Quick Preview] window.



- The [Quick Preview] window allows you to quickly review the downloaded images. You can also resize the [Quick Preview] window.
- When all images have been downloaded, DPP starts up automatically and the downloaded images are displayed.
- To switch to the main window, click the [Main Window] button in the viewer window.



- In step 2, you can batch checkmark several images in sequence. After clicking the first image you want to download, hold the < Shift > key and click the last image, and [ ] will be displayed. By clicking the [] button, the selected images will be checkmarked in a batch.
- For a list of viewer window functions, refer to [p.53](#).

Downloading Images with a Card Reader

For users with a third-party card reader, you can also download to your computer images stored in a memory card using the card reader. However, EU does not support image downloading using a card reader. For this reason, when downloading images using a card reader, use one of the following 3 procedures.

Downloading Images Using Digital Photo Professional

You can use DPP to download to your computer shot images from a memory card inserted in a third-party card reader connected to your computer.

For detailed instructions, refer to “Downloading Images Using Your Card Reader” in the “Digital Photo Professional Instruction Manual” (PDF electronic manual).

Downloading Images Using ZoomBrowser EX

You can use ZoomBrowser EX to download to your computer shot images from a memory card inserted in a third-party card reader connected to your computer.

For detailed instructions, refer to “Downloading Images Using Your Card Reader” in the “ZoomBrowser EX Instruction Manual” (PDF electronic manual).

Downloading Images without Using Canon Software

To download images with a card reader without using Canon software such as DPP or ZoomBrowser EX, copy to your computer the [DCIM] folder in the memory card.

For more details about folder structures and files in the memory card, refer to [p.50](#).

Introduction

Contents at a Glance

Downloading Images

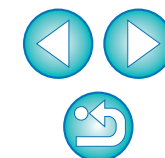
Camera Settings

Remote Shooting

Preferences

Reference

Index



Exiting EU

1 Click the [Quit] button.



→ The window closes and EU exits.

2 Turn the camera's power switch to < OFF >.

3 Disconnect the cable from the camera and computer.

- Do not pull on the cable; hold the plug and pull out.

Introduction

Contents at a Glance

Downloading Images

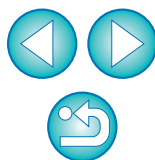
Camera Settings

Remote Shooting

Preferences

Reference

Index



2 Setting the Camera from Your Computer



This section explains how to set the camera's functions from EU.

Setting the Camera Owner's Name, Copyright Notice and Date/Time.....	12
Available Settings by Camera Model.....	13
Setting up Camera Functions	14
Available Settings by Camera Model.....	15
Setting Picture Styles and Applying to the Camera....	16
Selecting a Picture Style and Applying to the Camera.....	16
Changing Picture Style Settings and Applying to the Camera.....	17
Applying Picture Style Files to the Camera	18
Registering Personal White Balance in the Camera ...	19
Setting JPEG Quality and Applying to the Camera	20
Adjusting White Balance and Applying to the Camera...	21
Registering Peripheral Illumination Correction Data for the Lens in the Camera	21
Setting My Menu and Registering to the Camera	22

Introduction

Contents at a Glance

Downloading Images

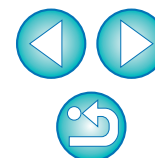
Camera Settings

Remote Shooting

Preferences

Reference

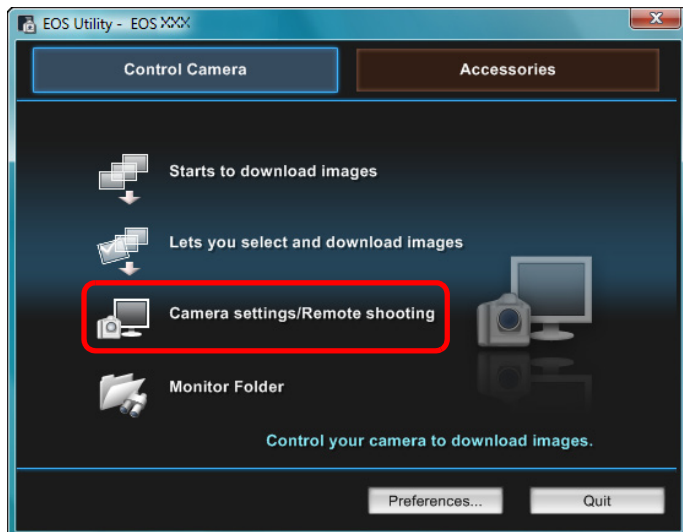
Index



Setting the Camera Owner's Name, Copyright Notice and Date/Time

You can set and apply to the camera, the camera owner's name, copyright notice and date/time recorded as shooting information in shot images.

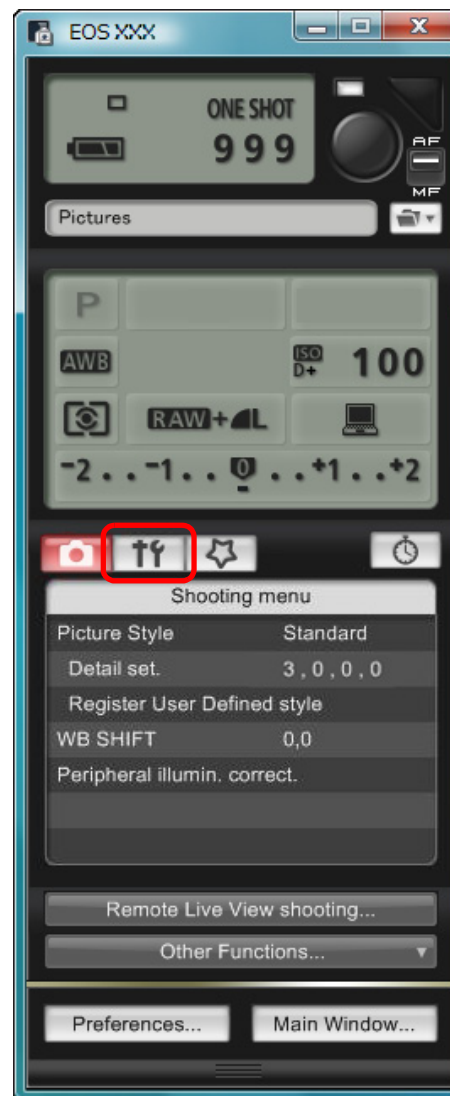
- 1 Connect your camera and computer, and then start up EU (p.5).
- 2 Click [Camera settings/Remote shooting].



→ The capture window appears.

- 3 Click the [] button.

Capture window



→ The [Set-up menu] appears.

Introduction

Contents at a Glance

Downloading Images

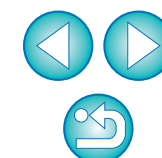
Camera Settings

Remote Shooting

Preferences

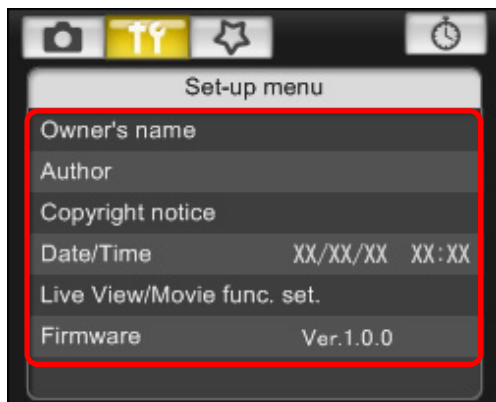
Reference

Index




4 Click the required setting and specify each one.

Set-up menu



- Available settings are displayed for the camera that is connected. For more details, refer to “Available Settings by Camera Model” ([Description on the below](#)).

 For a list of the capture window functions, refer to [p.56](#).

Available Settings by Camera Model

Setting	1Ds Mk III 1D Mk III	5D Mk II 50D REBELT1i 500D	40D	REBELXS 450D REBELXS 1000D
Owner's name	○	○	○	○
Author	—	○	—	—
Copyright notice	—	○	—	—
Date/Time	○	○	○	○
Live View/Movie func. set. ^{*1}	○	○	○	○
Firmware	○	○	○	○

Owner's name

- You can enter and set up to 31 characters as the camera owner's name.

Author^{*2}

- You can enter and set up to 63 characters or symbols, including a prefix, as the author's name. [Photographer:] is set as the default prefix, but you can change this to a new prefix.

Copyright notice^{*2}

- You can enter and set up to 63 characters or symbols, including a prefix, as the copyright notice. [Copyright:] is set as the default prefix, but you can change this to a new prefix.

Date/Time

- You can set the camera's date and time.

Live View/Movie func. set.^{*1}

- You can set whether the Live View function settings or Movie function settings ([p.25](#)) are available or not.

Firmware

- You can display the version of the camera's firmware.
- You can update the firmware by clicking on this item.
- For more details on updating firmware, refer to the Canon's website.

^{*1} Movie function settings for **5D Mk II** **REBELT1i** **500D** only.

^{*2} When the author or copyright notice set is not displayed in full, moving the cursor to the displayed setting item will display all the entered information as a pop-up.

Introduction

Contents at a Glance

Downloading Images

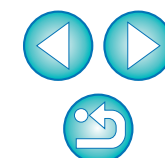
Camera Settings

Remote Shooting

4 Preferences

Reference

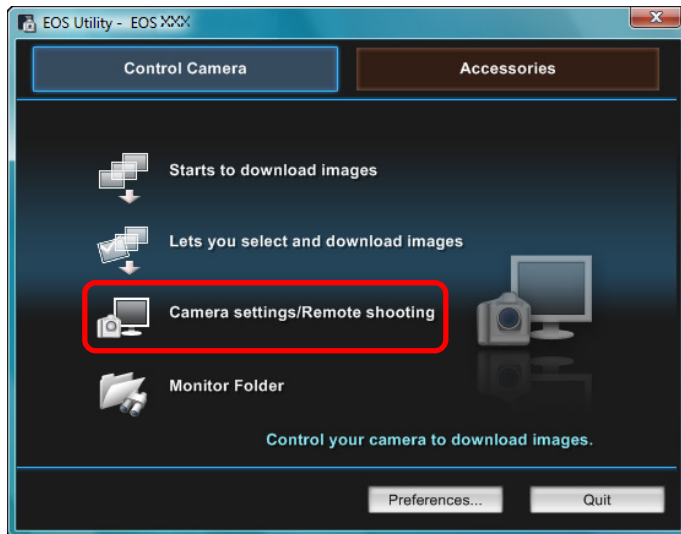
Index



Setting up Camera Functions

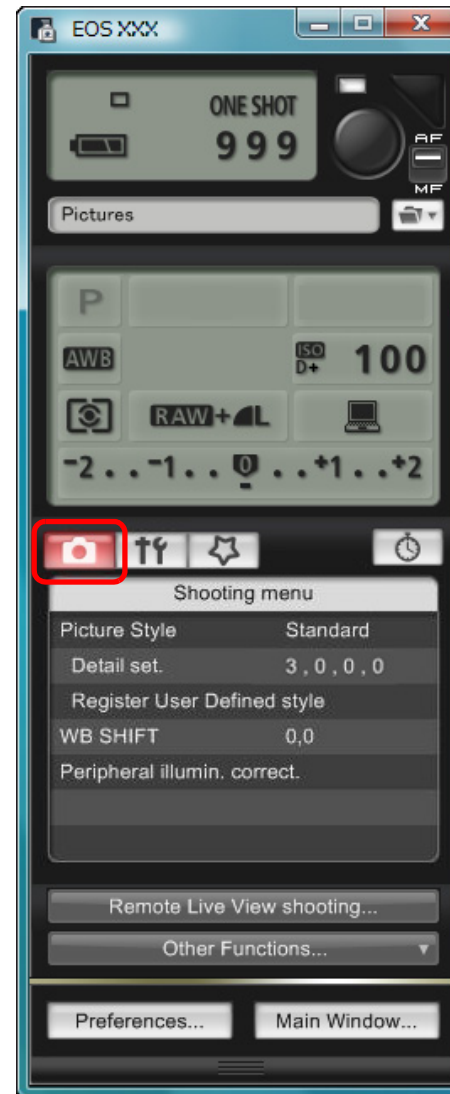
You can set and apply to the camera Picture Styles, personal white balance, JPEG quality and white balance adjustment.

- 1 Connect your camera and computer, and then start up EU (p.5).
- 2 Click [Camera settings/Remote shooting].



→ The capture window appears.

- 3 Click the [] button.



→ The [Shooting menu] appears.

Introduction

Contents at a Glance

Downloading Images

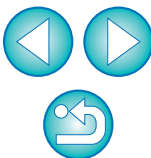
Camera Settings

Remote Shooting

Preferences

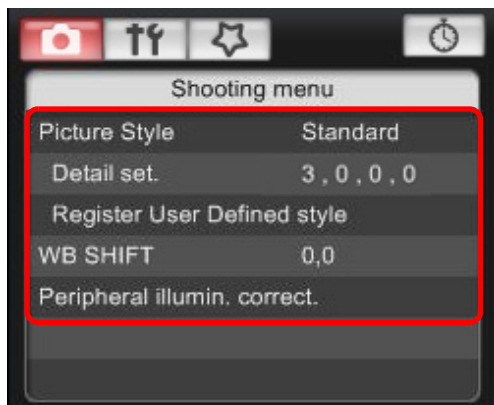
Reference

Index



4 Click the required setting and specify each one.

Shooting menu



- Available settings are displayed for the camera that is connected. For more details, refer to “Available Settings by Camera Model” ([Description on the right](#)).

Available Settings by Camera Model

Setting	1Ds Mk III 1D Mk III	5D Mk II 50D REBELT1i 500D	40D	REBELXSi 450D REBELXS 1000D
Picture Style	<input type="radio"/>	<input type="radio"/>	<input type="radio"/>	<input type="radio"/>
Personal white balance	<input type="radio"/>	—	<input type="radio"/>	—
JPEG quality	<input type="radio"/>	—	—	—
White balance adjustment	<input type="radio"/>	<input type="radio"/>	<input type="radio"/>	<input type="radio"/>
Registering peripheral illumination correction data	—	<input type="radio"/>	—	—

Picture Style

- You can set a Picture Style and apply it to the camera, in the same way as operating from the camera ([p.16](#)).

Personal white balance

- You can register to the camera a personal white balance file saved in RAW Image Task ([p.19](#)).

JPEG quality

- You can set the JPEG image quality and apply it to the camera, in the same way as operating from the camera ([p.20](#)).

White balance adjustment

- You can adjust the white balance, in the same way as operating from the camera ([p.21](#)).

Registering peripheral illumination correction data

- You can register peripheral illumination correction data for the lens to the camera or delete registered data from the camera ([p.21](#)).

Introduction

Contents at a Glance

Downloading Images

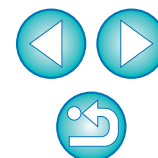
Camera Settings

Remote Shooting

Preferences

Reference

Index



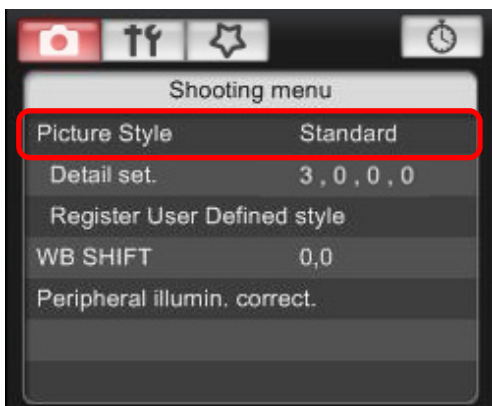
Setting Picture Styles and Applying to the Camera

You can set and apply Picture Styles to the camera, in the same way as operating from the camera. You can change the values for [Sharpness], [Contrast], [Saturation] and [Color tone] of each Picture Style and register up to three of your own Picture Styles in the camera as user-defined settings.

You can also register Picture Style files in the camera as user-defined settings you have downloaded from the Canon's website or created with Picture Style Editor (Picture Style file creating software) (hereinafter PSE) and saved to your computer.

Selecting a Picture Style and Applying to the Camera

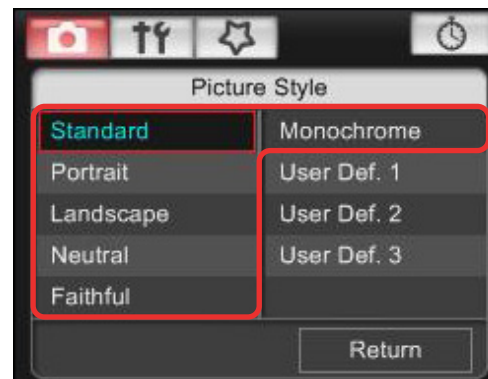
1 Click [Picture Style].



→ The [Picture Style] window appears.

2 Click the Picture Style to be set in the camera.

Picture Style window



→ The setting is applied to the camera and the display returns to the [Shooting menu].

Introduction

Contents at a Glance

Downloading Images

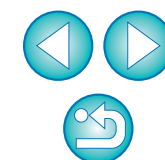
Camera Settings

Remote Shooting

Preferences

Reference

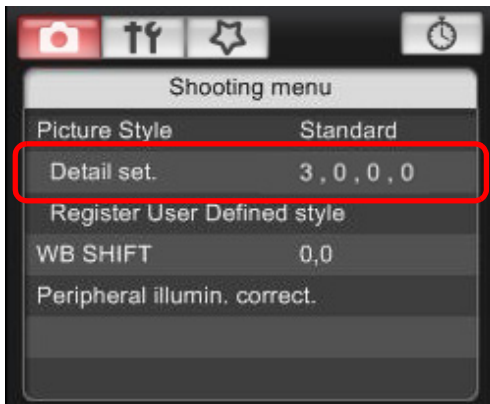
Index



Changing Picture Style Settings and Applying to the Camera

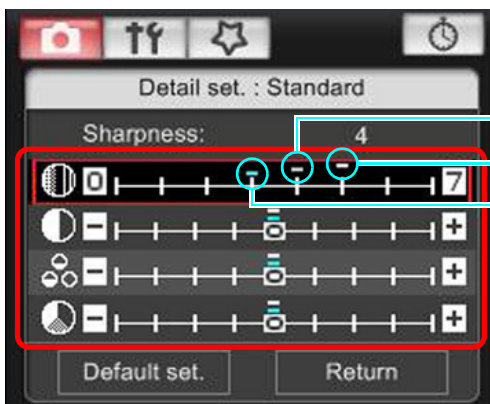
You can set your own Picture Style [Sharpness], [Contrast], [Saturation] and [Color tone] and apply them to the camera, in the same way as operating from the camera.

1 Click [Detail set.].



→ The [Detail set.] dialog box appears.

2 Set by clicking the pointer on the slider for each item.



→ If you select [Monochrome] for the Picture Style (p.16), the [Filter effect] and [Toning effect] list boxes appear.

3 Click the [Return] button.



→ The settings are applied to the camera, and the display returns to the [Shooting menu].

Introduction

Contents at a Glance

Downloading Images

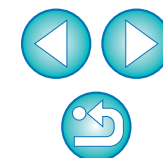
Camera Settings

Remote Shooting

Preferences

Reference

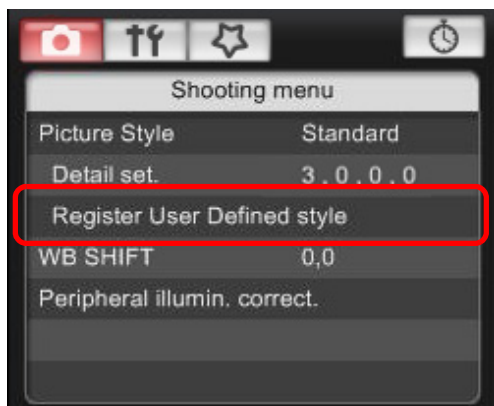
Index



Applying Picture Style Files to the Camera

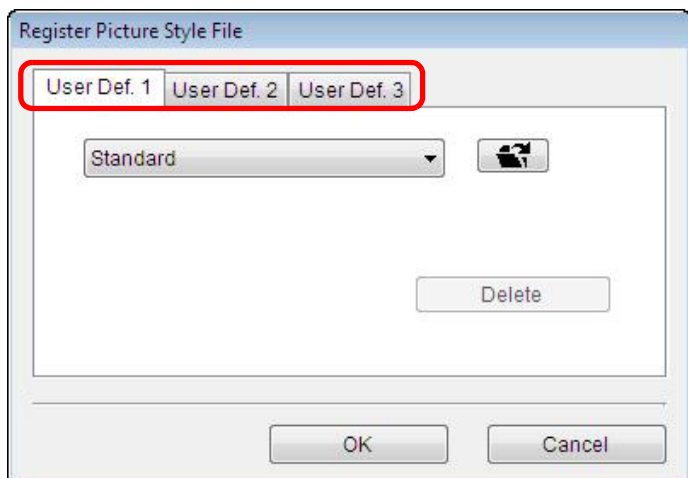
You can register up to three Picture Style files downloaded from the Canon's website or created with PSE and saved to your computer, as user-defined settings in your camera.

1 Click [Register User Defined style].

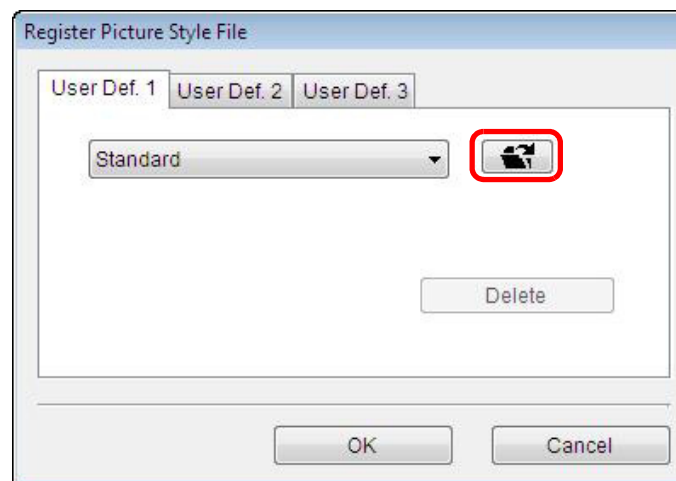


→ The [Register Picture Style File] dialog box appears.

2 Select a tab from one of [User Defined 1] to [User Defined 3].

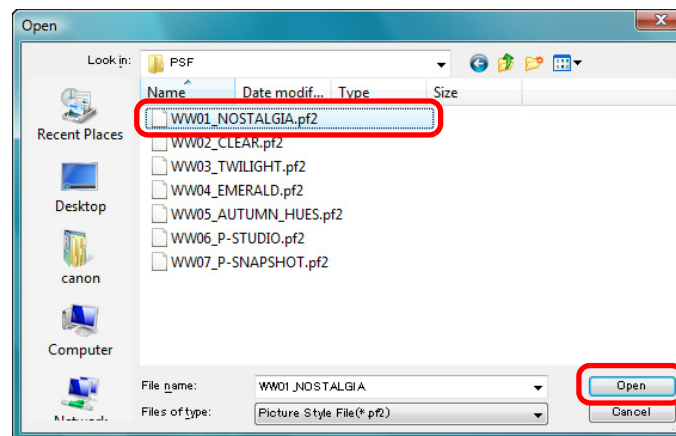


3 Click the [Open] button.



→ The [Open] window appears.

4 Select a Picture Style file and then click the [Open] button.



→ The Picture Style file is loaded.

Introduction

Contents at a Glance

Downloading Images

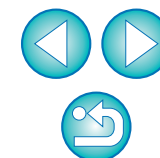
Camera Settings

Remote Shooting

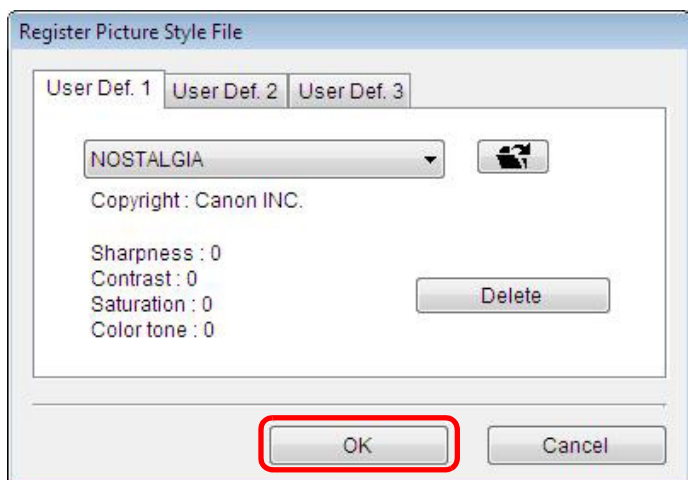
4 Preferences

Reference

Index



5 Click the [OK] button.



→ The Picture Style file is registered in the camera.

Registering Personal White Balance in the Camera

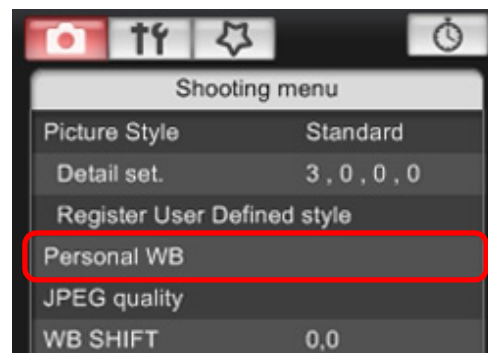


White balance files created by adjusting the white balance of a RAW image and saving the results can be registered in the camera as personal white balances.

To adjust the white balance and save the results, start up RAW Image Task from ZoomBrowser EX.

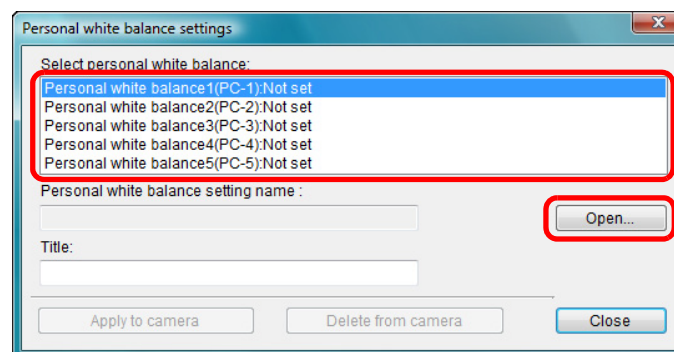
For more information on RAW Image Task, refer to the “ZoomBrowser EX Instruction Manual” (PDF electronic manual).

1 Click [Personal WB].



→ The [Personal white balance settings] dialog box appears.

2 Select the personal white balance to be registered and click the [Open] button.



→ The [Open] dialog box appears.



- A Picture Style file is an extended function of Picture Style. For more details on Picture Style files, refer to the Canon's website.
- The Picture Style files that you can apply to the camera are files with the “.PF2” extension only.
- For details on using PSE, refer to the “Picture Style Editor Instruction Manual” (PDF electronic manual).

Introduction

Contents at a Glance

Downloading Images

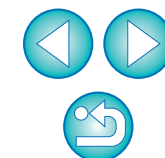
Camera Settings

Remote Shooting

Preferences

Reference

Index



3 Open the folder containing the saved white balance file, select the file and then click the [Open] button.

- The white balance file is loaded.
- The white balance files that you can register to the camera are files with the “.WBD” extension.

4 Enter a title into the [Title] input field.

- You cannot enter the title on **40D**.

5 Click the [Apply to camera] button.

- The personal white balance is registered on the camera.
- This is registered as manual white balance on **40D**.
- To register another setting, repeat step 2 to step 5.

6 Click the [Close] button.

- The [Personal white balance settings] dialog box closes and the display returns to the [Shooting menu].

7 Select a registered personal white balance on the camera.

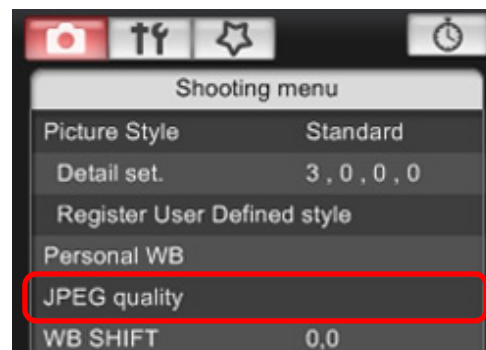
- Select a registered personal white balance (**1Ds Mk III** **1D Mk III**) or manual white balance (**40D**) as the white balance.
- For selecting personal white balance or manual white balance, refer to “Selecting the White Balance” (**1Ds Mk III** **1D Mk III**) or “Setting the White Balance” (**40D**) in the camera’s Instruction Manual provided with your camera.

Setting JPEG Quality and Applying to the Camera



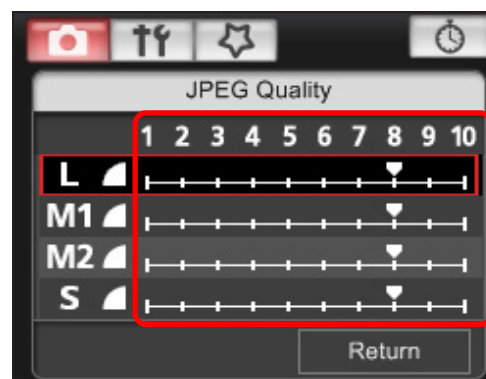
You can set the JPEG image quality and apply it to the camera, in the same way as operating from the camera.

1 Click [JPEG quality].



- The [JPEG Quality] window appears.

2 Click the setting position.



- The settings are applied to the camera.
- Higher values give a lower compression ratio and higher image quality for any size.

3 Click [Return].

- The display returns to the [Shooting menu].

Introduction

Contents at a Glance

Downloading Images

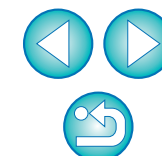
Camera Settings

Remote Shooting

Preferences

Reference

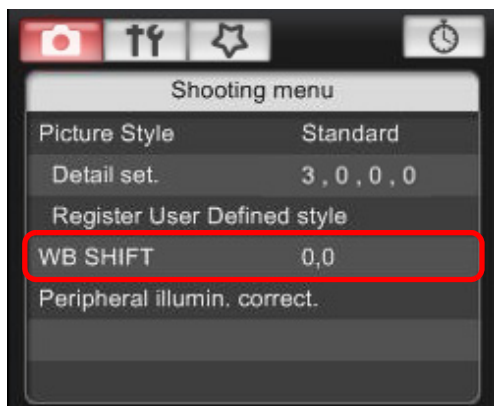
Index



Adjusting White Balance and Applying to the Camera

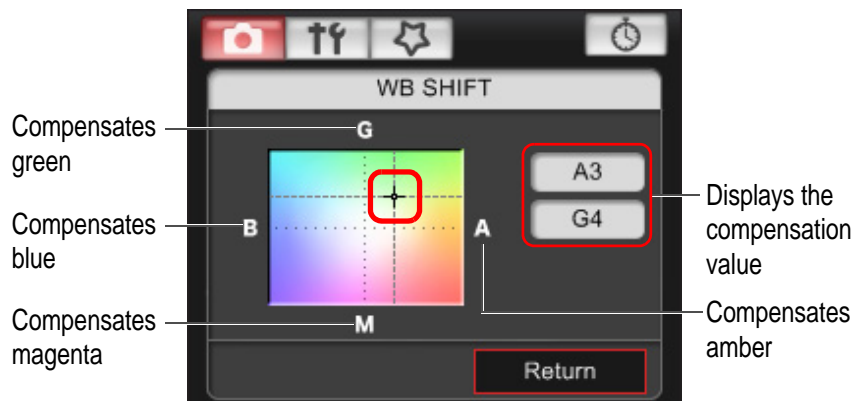
You can adjust white balance, in the same way as operating from the camera.

1 Click [WB SHIFT].



→ The [WB SHIFT] window appears.

2 Click the compensation position.



→ The settings are applied to the camera.

3 Click [Return].

→ The display returns to the [Shooting menu].

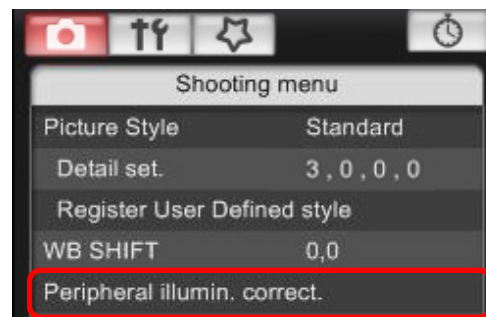
- To revert the corrected values to the original values, follow the procedure in step 2.

Registering Peripheral Illumination Correction Data for the Lens in the Camera



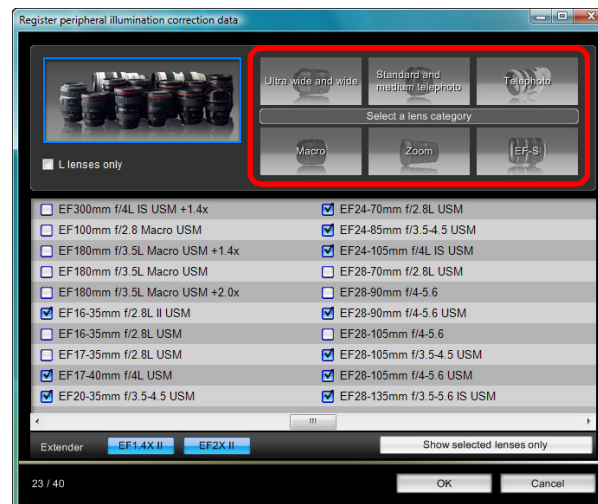
You can register peripheral illumination correction data for the lens to the camera or delete registered data from the camera.

1 Click [Peripheral illumin. correct.].



→ The [Register peripheral illumination correction data] window appears. Lenses for which correction data is registered in the camera are shown checked.

2 Select the lens category for which you want to register correction data.



→ A list appears showing only the selected lens category.

Introduction

Contents at a Glance

Downloading Images

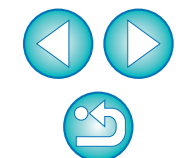
Camera Settings

Remote Shooting

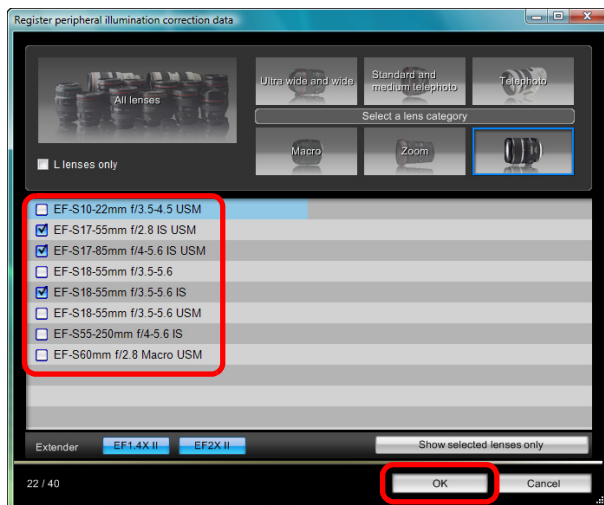
Preferences

Reference

Index



3 Select the lens for which you want to register correction data and click the [OK] button.



→ The correction data for the selected lens is registered in the camera.

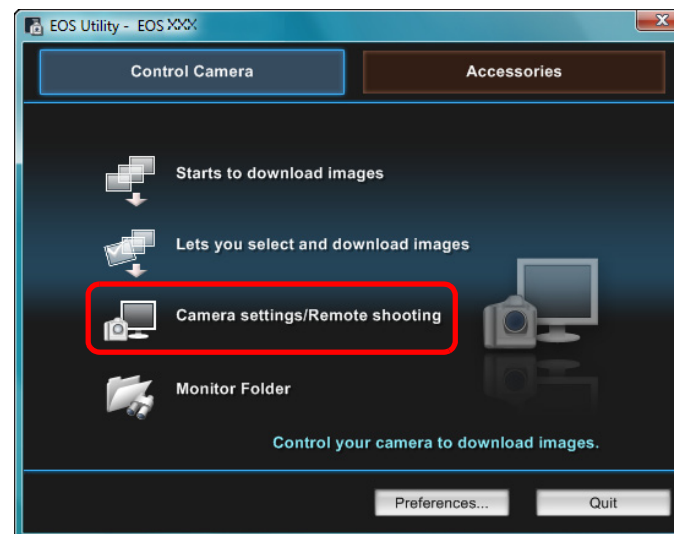
Setting My Menu and Registering to the Camera

You can register up to six frequently used menu items as My Menu and register them to the camera, in the same way as operating from the camera.

You can register top layer items of each tab as well as all items of Custom Functions.

1 Connect your camera and computer, and then start up EU (p.5).

2 Click [Camera settings/Remote shooting].



→ The capture window appears.



- For a list of the [Register peripheral illumination correction data] window functions, refer to p.54.
- Lens names displayed in the [Register peripheral illumination correction data] window may be partially shortened depending on the lens type.

Introduction

Contents at a Glance

Downloading Images

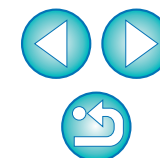
Camera Settings

Remote Shooting

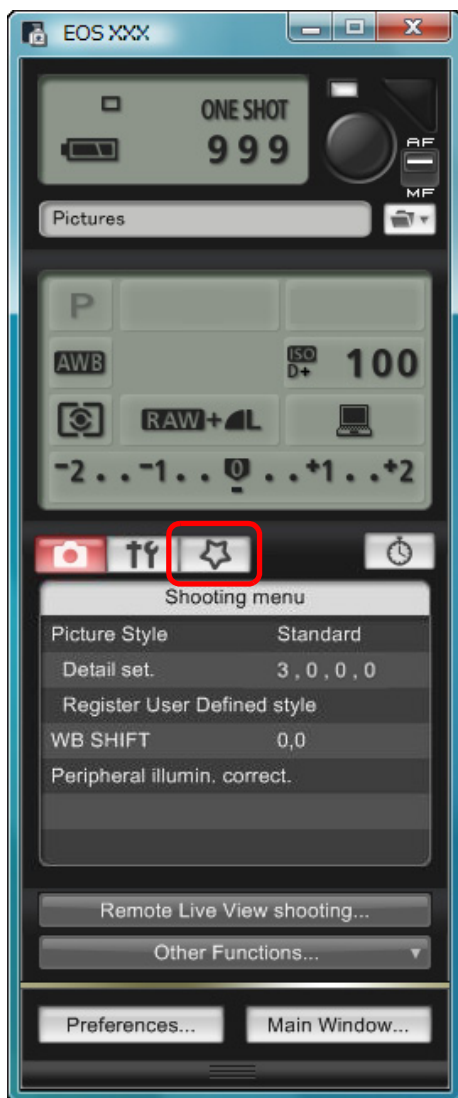
Preferences

Reference

Index

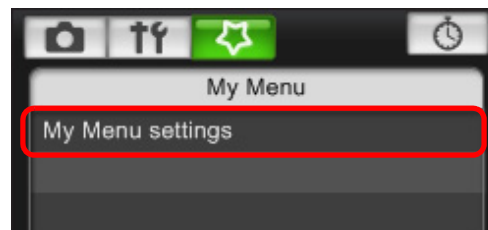


3 Click the [] button.



→ The [My Menu] appears.

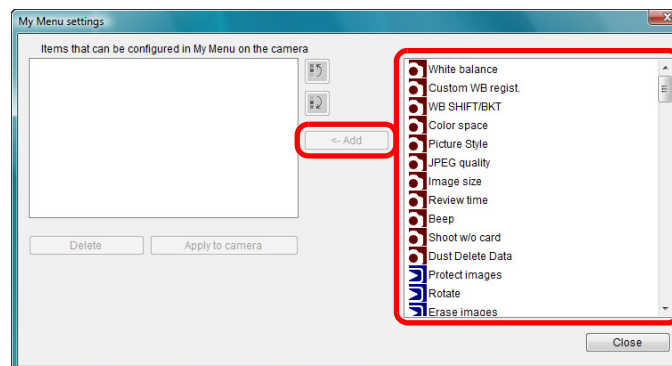
4 Click [My Menu settings].
My Menu





→ The [My Menu settings] window appears.

5 Select the item to be registered and click the [Add] button.

My Menu settings window



→ The selected item is added to [Items that can be configured in My Menu on the camera] on the left side of the window.

- You can register up to six items with the above procedure.
- You can change the position of an item by selecting it and then clicking the [] or [] button to move it.

6 Click the [Apply to camera] button.

→ The setting is applied to the camera.

Introduction

Contents at a Glance

Downloading Images

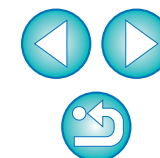
Camera Settings

Remote Shooting

Preferences

Reference

Index



3 Remote Shooting by Controlling the Camera from Your Computer



From EU you can control the camera remotely, and by viewing the subject in the EU window, you can set the camera and shoot. You can also shoot by directly operating your camera even during remote shooting, or preset a time allowing the camera to shoot automatically with timer shooting.

Remote Live View Shooting	25
Remote Live View Window Functions	28
Focusing Manually.....	28
Focusing Using AF	30
Focusing Using Quick Mode.....	30
Focusing Using Live Mode	31
Focusing Using Face Detection Live Mode	32
Checking the Depth of Field and Exposure	32
White Balance with the Remote Live View Window ...	33
White Balance for Flash Photography	33
Adjusting the Horizontal/Vertical Alignment of the Camera.....	35
Changing the Aspect Ratio.....	35
Shooting by Operating the Camera	36
Shooting Movies	37
Timer-controlled Shooting	40
Timer Shooting	40
Interval Timer Shooting	40
Bulb Exposures	41

Introduction

Contents at
a Glance

Downloading
Images

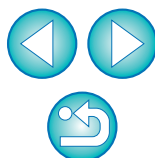
Camera
Settings

Remote
Shooting

Preferences

Reference

Index



Remote Live View Shooting

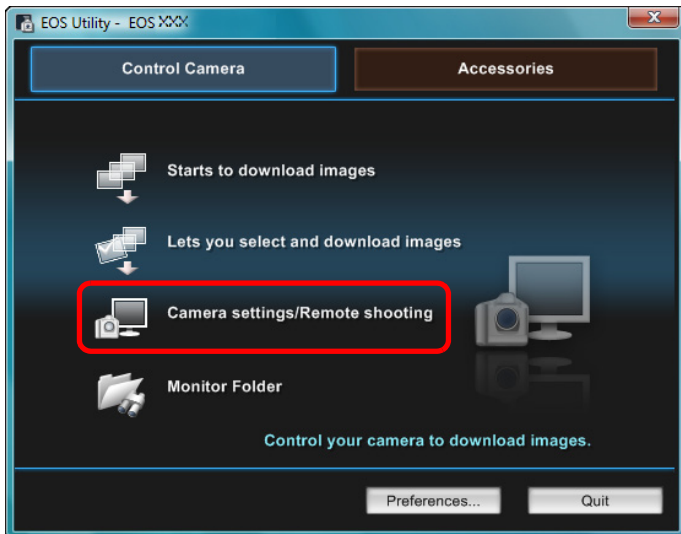
You can control your camera remotely from EU and shoot still images from your computer screen.

Also, the shot image is saved directly on your computer and you can recheck it using linked Digital Photo Professional (hereinafter DPP). This function is effective for shooting large numbers with fixed-framing such as for studio shooting.

1 Connect your camera and computer, and then turn the camera's power switch to < ON >.

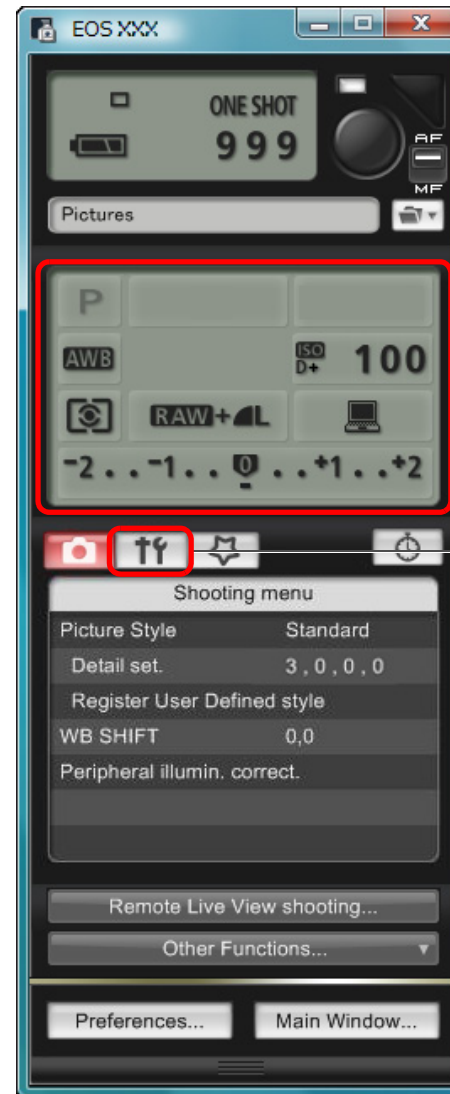
- EU starts up.
- REBELT1i 500D cannot communicate with EU if the camera's mode dial is set to < P >. Set the mode dial to a mode other than < P >.
- Looking into the viewfinder of the camera, compose your picture and adjust the focus.

2 Click [Camera settings/Remote shooting].



- The capture window appears.

3 Set the camera and click the [Tf] button.



Double-click or right-click the setting item and select the setting*

Click

- You can also use the functions of the [Shooting menu] (p.14).
- The settings that cannot be set in the capture window (drive mode, etc.) can be set by operating the camera.
- * You can also use the scroll-wheel on your mouse to select settings for items in the settings window.
- The [Set-up menu] appears.

Introduction

Contents at a Glance

Downloading Images

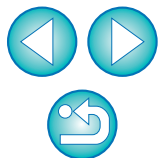
Camera Settings

Remote Shooting

Preferences

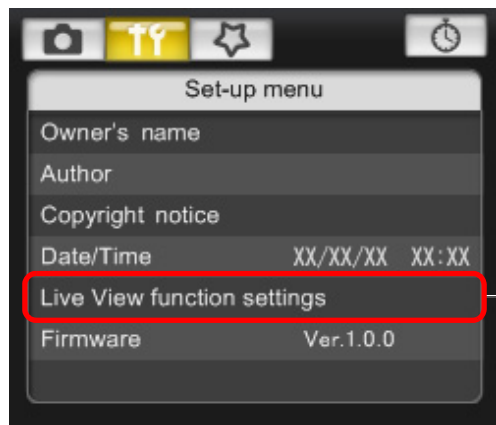
Reference

Index



4 Set the Live View function.

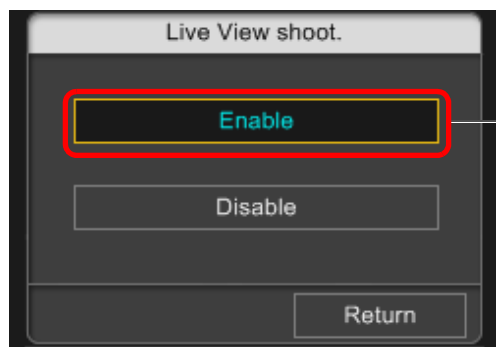
- Click [Live View function settings], and click [Enable] in the [Live View shoot.] window that appears.



Click

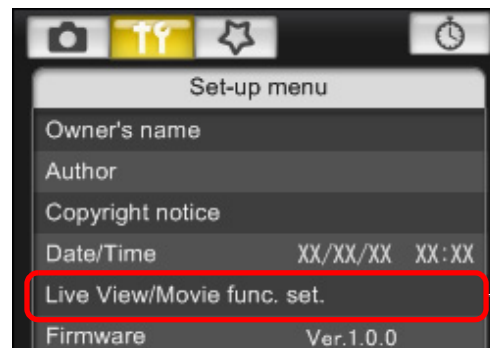


Live View shoot. window



Click

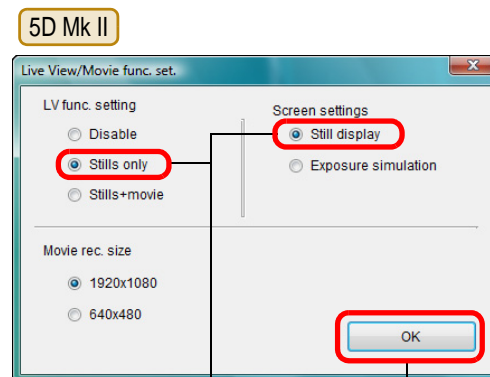
- On **5D Mk II**, **REBELT1i**, **500D**, click [Live View/Movie func. set.]. For **5D Mk II**, select [Stills only] and [Still display] in the [Live View/Movie func. set.] window and click the [OK] button. For **REBELT1i**, **500D**, select [Enable] and click the [OK] button.



Click

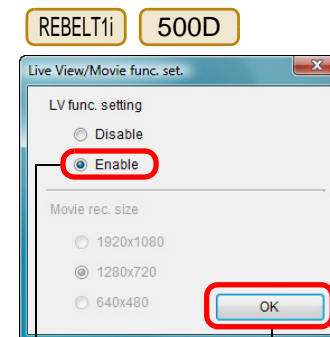


Live View/Movie func. set. window



Select

Click



Select

Click

Introduction

Contents at a Glance

Downloading Images

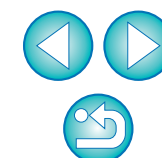
Camera Settings

Remote Shooting

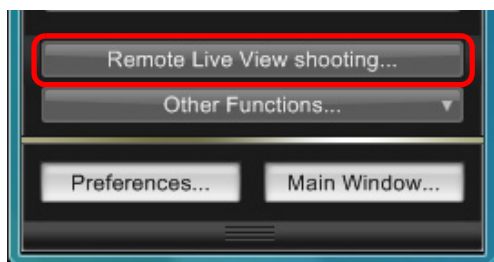
Preferences

Reference

Index



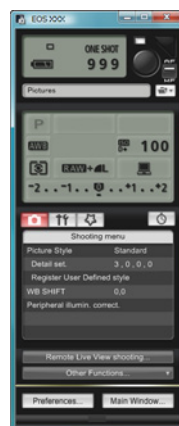
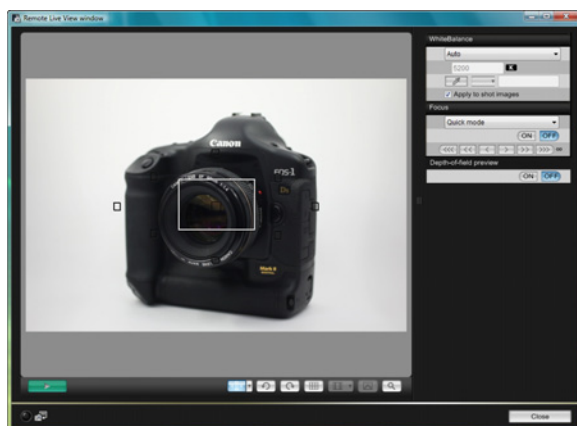
5 Click the [Remote Live View shooting] button.



→ The [Remote Live View window] appears.



Remote Live View window



6 Click the [●] button to shoot.



→ The shot image is transferred to your computer and displayed in the [Quick Preview] window. And then, DPP starts up automatically.

- You can quickly review the shot image in the [Quick Preview] window displayed before DPP starts up. You can also resize the [Quick Preview] window.
- You can show/hide the [Quick Preview] window by clicking the [Other Functions] button in the capture window and selecting [Quick Preview] from the menu that appears.

Introduction

Contents at a Glance

Downloading Images

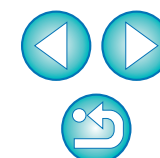
Camera Settings

Remote Shooting

Preferences

Reference

Index





- You cannot operate the camera when the [Remote Live View window] is displayed. Pressing the camera's < SET > button (Live View shooting button on 5D Mk II 50D REBELT1i 500D) will also display the Live View image on the camera's LCD monitor, allowing you to view the image while controlling the camera.
- You can shoot by operating the capture window, even if the [Remote Live View window] is not displayed.
- To perform exposure simulation (p.32) with [Remote Live View window] or enable display of histograms (p.57), set your camera's Custom Function [Live View exposure simulation] to [Enable]. On 5D Mk II 50D , [Exposure simulation] in the menu to [Enable].
- On 5D Mk II 50D , you can also use mirror lockup with remote shooting. (You cannot take test shots after setting mirror lockup.)
- You can save shot images to both your computer and a memory card (p.45).
- You can change the software that starts up automatically when remotely shot images are transferred to your computer from DPP to ZoomBrowser EX or other software (p.45).
- For a list of the Remote Live View window functions, refer to p.57.
- For a list of the Zoom View Window functions, refer to p.58.

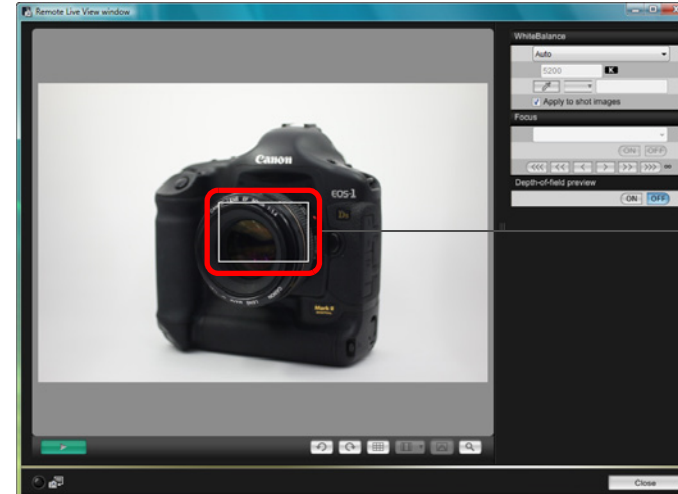
Remote Live View Window Functions

These pages explain the functions available in the Remote Live View window, including checking the camera settings and focusing while viewing your subject on the computer screen.

Focusing Manually

You can focus manually while viewing the enlarged image in the Remote Live View window.

- 1 Set the lens's focus mode switch to < AF >.
- 2 Drag [] to the section you want to enlarge.



Drag

Introduction

Contents at a Glance

Downloading Images

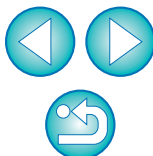
Camera Settings

Remote Shooting

Preferences

Reference

Index



3 Click the [] button.







- The section you selected in step 1 is displayed enlarged at 100% (actual pixel size) in the [Zoom View] window.

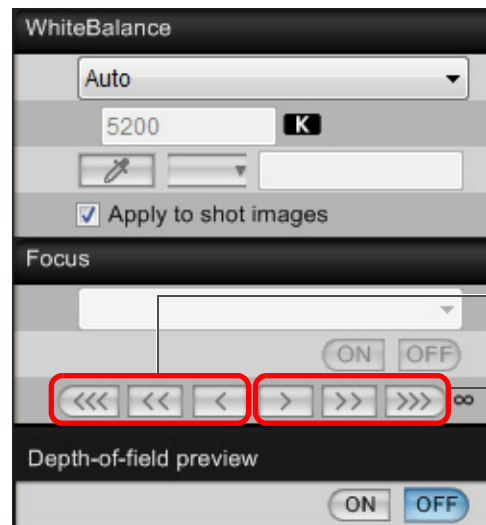


Zoom View Window





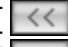

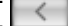

- To move the display position in the [Zoom View] window, click either [], [], [], or [].
- You can checkmark [Maintain Zoom View] to maintain display of the [Zoom View] window.
- You can also double-click the section you want to enlarge in step 1 to display an enlarged view at 100% (actual pixel size) in the [Zoom View] window.
- Double-click an image in the [Zoom View] window to return to the [Remote Live View window].
- You can checkmark [200%] to view the section enlarged to 200%.

4 Adjust the focus.



Closer

Further away

- [], [] : Adjustment Large amount
- [], [] : Adjustment Medium amount
- [], [] : Adjustment Small amount

- The [Remote Live View window] changes in real time according to the focus position adjustment.



You can also focus using a key operation on the keyboard.

Adjustment	Closer	Further away
Large amount	< I >	< O >
Medium amount	< K >	< L >
Small amount	< < >	< > >

Introduction

Contents at a Glance

Downloading Images

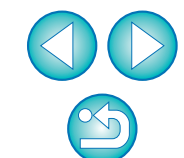
Camera Settings

Remote Shooting

Preferences

Reference

Index



Focusing Using AF

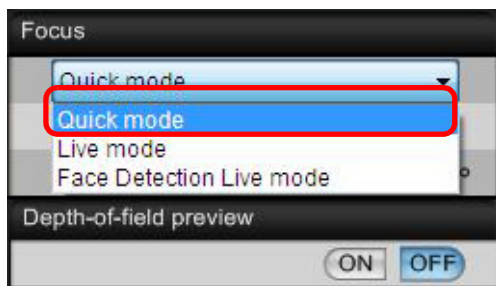



In Quick, Live and Face Detection Live AF modes, images can be focused automatically in the same way as on the camera itself.

Focusing Using Quick Mode

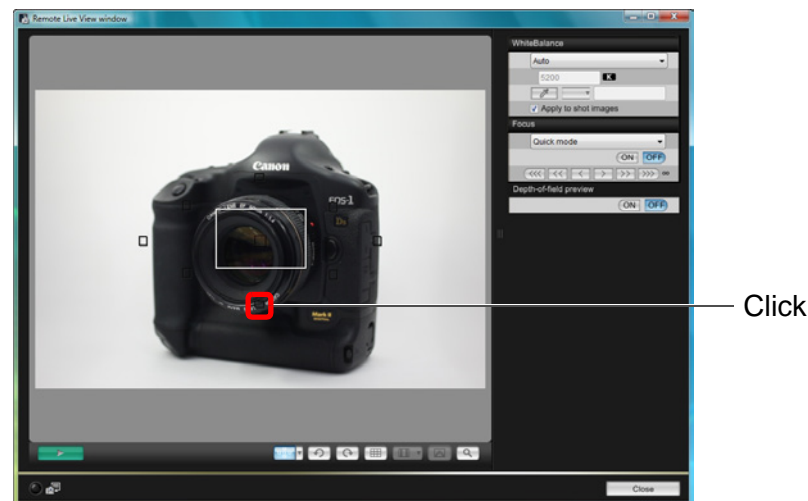



1 Select [Quick mode] from the list box.



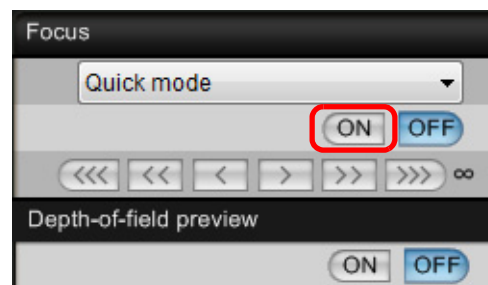
- The AF points appear.
- You can switch between showing and hiding the AF points by clicking the [] button.

2 Click the AF point in the position where you want to focus.



- You can switch between automatic AF point selection and manual AF point selection by clicking the [▼] in the [].
- In automatic selection, all the AF points are automatically selected.

3 Click the [ON] button.



- AF is executed.
- When focus is achieved, the camera makes a beeping sound and the AF point turns red.

- Double-clicking an AF point also performs AF.
- To cancel AF operation, click the [OFF] button.

Introduction

Contents at a Glance

Downloading Images

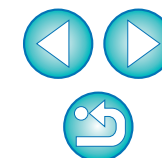
Camera Settings

Remote Shooting

Preferences

Reference

Index

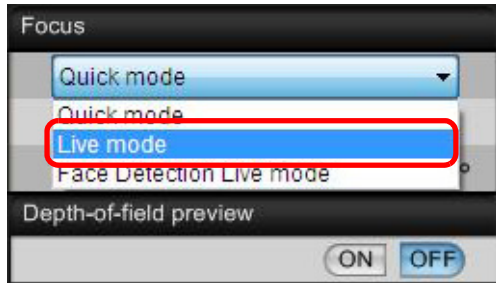



Focusing Using Live Mode



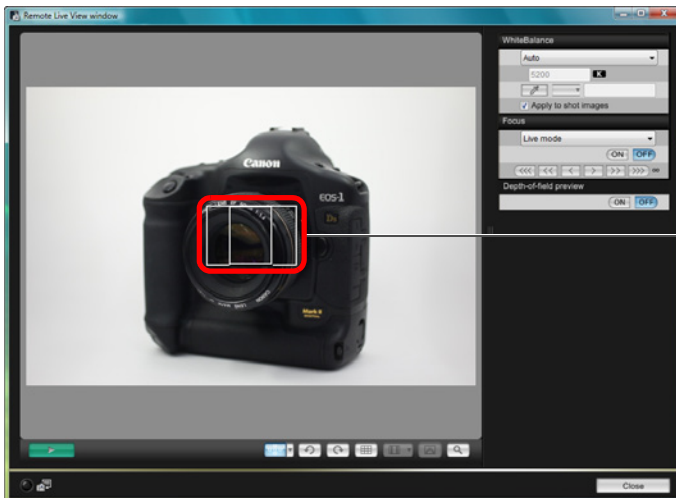
5D Mk II 50D REBELT1i 500D

1 Select [Live mode] from the list box.



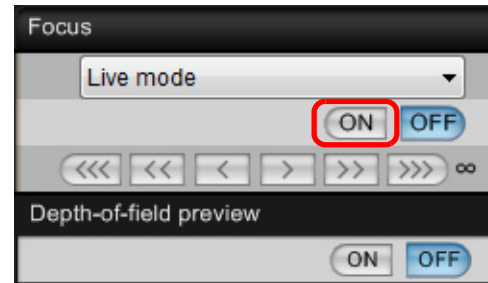
- The AF point appears.
- You can switch between showing and hiding the AF point by clicking the [] button.

2 Drag the enlargement display frame to move it to the position where you want to focus.



Drag

3 Click the [ON] button.



- AF is executed.
- When focus is achieved, the camera makes a beeping sound and the AF point turns green.
- If focus is not achieved, the AF point turns red.

Introduction

Contents at a Glance

Downloading Images

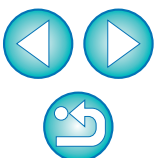
Camera Settings

Remote Shooting

Preferences

Reference

Index

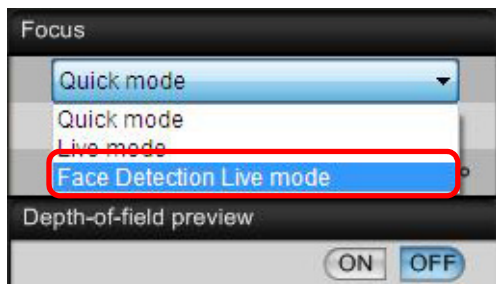



Focusing Using Face Detection Live Mode



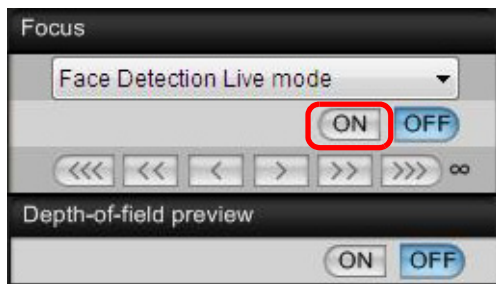
5D Mk II 50D REBELT1i 500D

1 Select [Face Detection Live mode] from the list box.



- When a face is detected, an AF point appears.
- When there is a face other than the face detected by the camera, a new AF point appears when you move the cursor to the position of the other face. Clicking that position then selects the AF point.
- You can switch between showing and hiding the AF point by clicking the [] button.

2 Click the [ON] button.

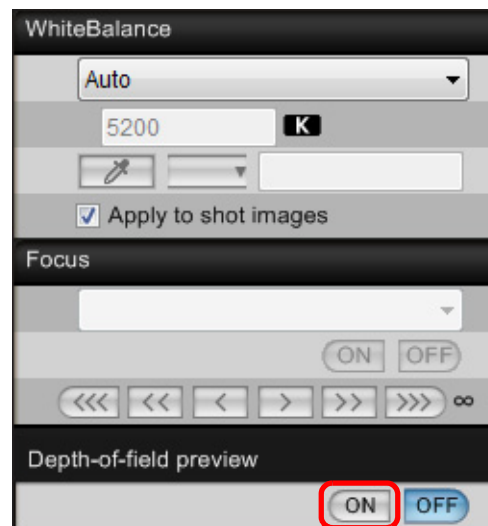


- AF is executed.
- When focus is achieved, the camera makes a beeping sound and the AF point turns green.
- If focus is not achieved, the AF point turns red.
- If the camera cannot detect a face, the AF point is fixed to the center to focus.

Checking the Depth of Field and Exposure

You can check the depth of field and exposure in the Remote Live View window.

Click the [ON] button.



- The aperture value (exposure simulation) is set in the capture window (p.56).

Introduction

Contents at a Glance

Downloading Images

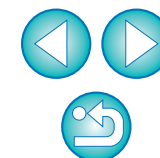
Camera Settings

Remote Shooting

Preferences

Reference

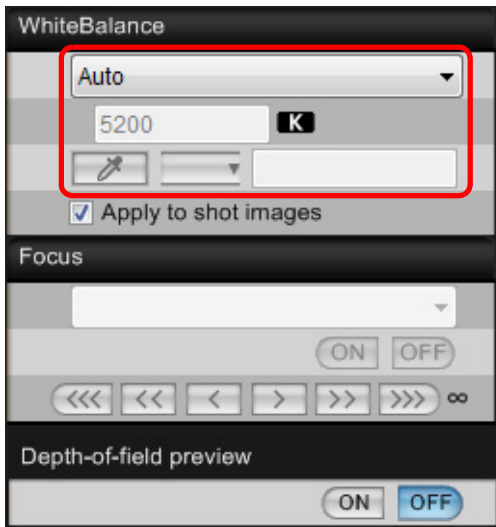
Index



White Balance with the Remote Live View Window

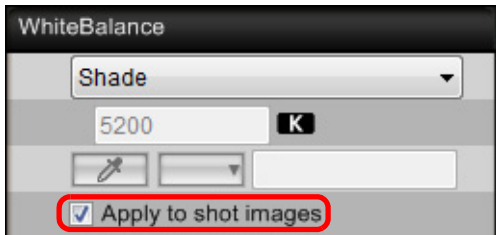
You can change the white balance of an image in the Remote Live View window and register the changed white balance in the camera.

1 Select the white balance to apply to the image.



→ The selected white balance is applied to the image displayed in real time and you can check it in the [Remote Live View window].

2 Checkmark [Apply to shot images].



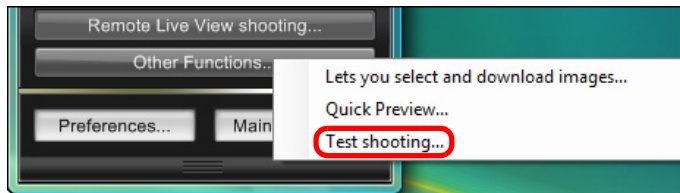
→ The selected white balance is registered in the camera as a personal white balance and applied to images that will be taken.

White Balance for Flash Photography

When taking flash shots where the subject is illuminated instantaneously, you can take a test shot under the same conditions as a actual shot, and adjust the white balance in the [Test Shooting] window based on the shot test image.

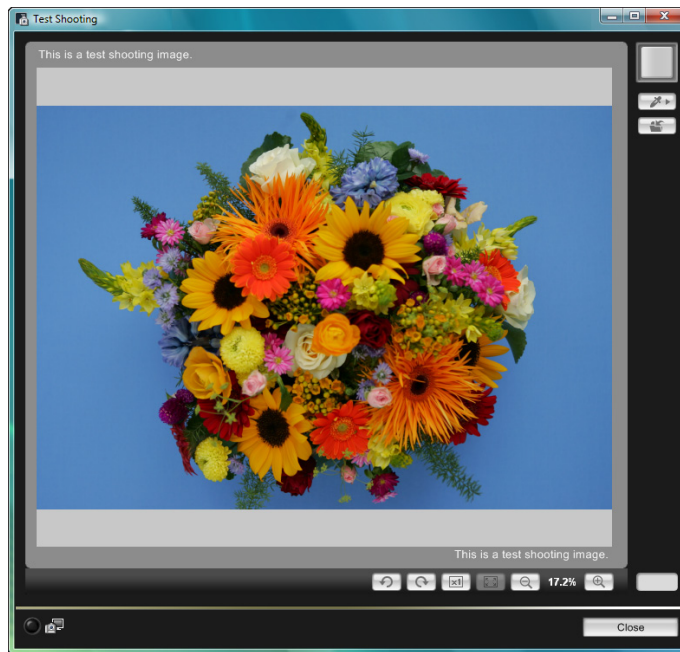
Also, you can take a test shot even when flash is not used.

1 Click the [Other Functions] button and select [Test shooting] from the menu that appears.



→ The shot image is displayed in the [Test Shooting] window.

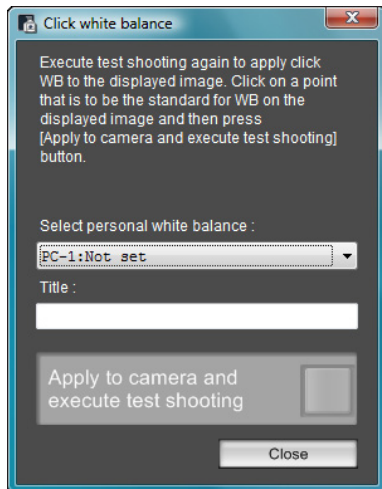
Test Shooting window



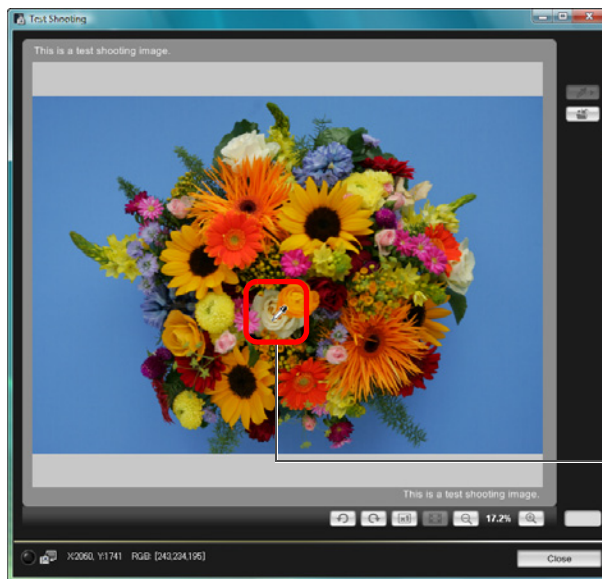
2 Click the [] button.

→ The [Click white balance] window appears.

Click white balance window

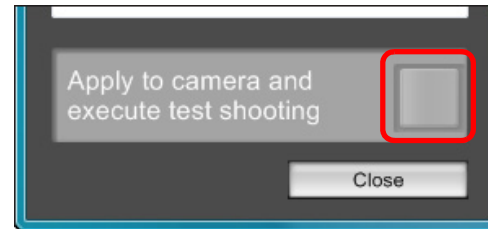


3 Click on a point that is to be the standard for white.




Click

4 Click the [Apply to camera and execute test shooting] button.



→ A shot will be taken again using the part of the image in step 3 clicked as the standard for white and the shot image is displayed in the [Test Shooting] window.

- The test image will not be saved. To save the test image, click the [] button.
- To close the [Test Shooting] window, click the [Close] button.

Introduction

Contents at a Glance

Downloading Images

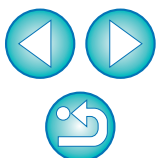
Camera Settings


Remote Shooting

Preferences

Reference

Index



 For a list of the [Test Shooting] window functions, refer to [p.59](#).

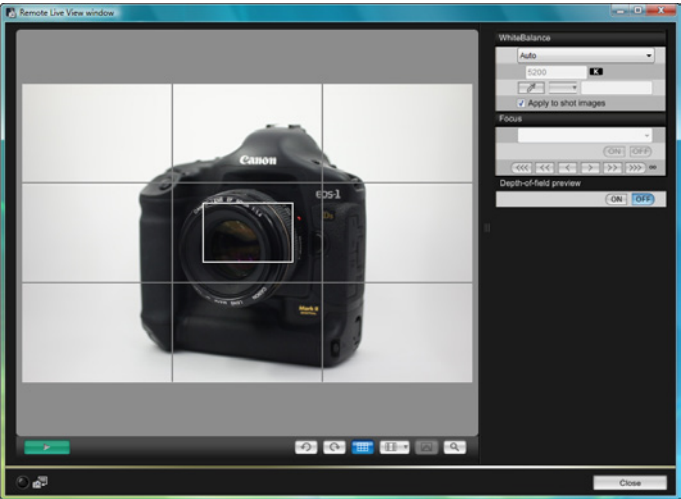
Adjusting the Horizontal/Vertical Alignment of the Camera

You can display gridlines in the [Remote Live View window] in the same way as the camera's Live View function, and adjust the horizontal/vertical alignment of the camera.

1 Click the [] button.



→ Gridlines are displayed in the [Remote Live View window].



2 Move the camera to adjust the horizontal/vertical alignment.

● To remove the gridlines, click the [] button again.

Changing the Aspect Ratio



As with the camera's Live View function, it is possible to shoot with a feeling similar to film-type medium-format/large-format cameras such as 6 × 6 cm, 6 × 4.5 cm and 4 × 5 inches.

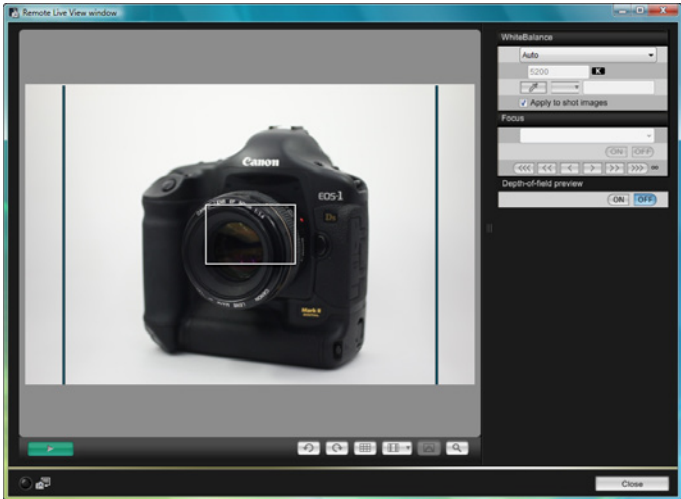
Aspect ratio information is also attached automatically with a shot image, and when viewing an image with DPP, is displayed as an image trimmed based on the aspect ratio information.

Further, aspect ratio information is only attached with a shot image, and the image itself is not actually trimmed.

1 Click the [] button and select the aspect ratio.



→ In the [Remote Live View window], the vertical lines of the aspect ratio you selected is displayed.



Introduction

Contents at a Glance

Downloading Images

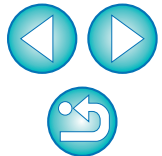
Camera Settings

Remote Shooting


Preferences

Reference

Index



2 Move the camera and compose your picture.

- To revert the aspect ratio to the normal condition, click the  button and select [Off].

Shooting by Operating the Camera

Even when remote shooting is set, you can still operate the camera and shoot – as when shooting with only the camera. Also, since the shot images are saved to your computer's hard disk, you can shoot large quantities without having to worry about the capacity of the memory card.

1 Display the capture window (p.25).

2 Press the camera's shutter button and take a shot.

→ The shot images are transferred to the computer, DPP starts up automatically, and the shot images are displayed.

Introduction

Contents at a Glance

Downloading Images

Camera Settings





Remote Shooting

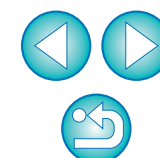
Preferences

Reference

Index




When the [Remote Live View window] is displayed, press the camera's < SET > button (Live View shooting button on the    ) to display the Live View image on the camera's LCD monitor and operate the camera.

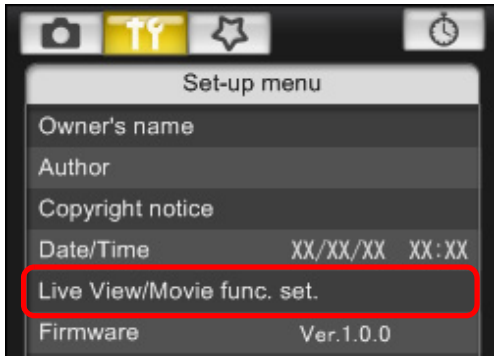


Shooting Movies

You can control your camera from EU and shoot movies from your computer screen.

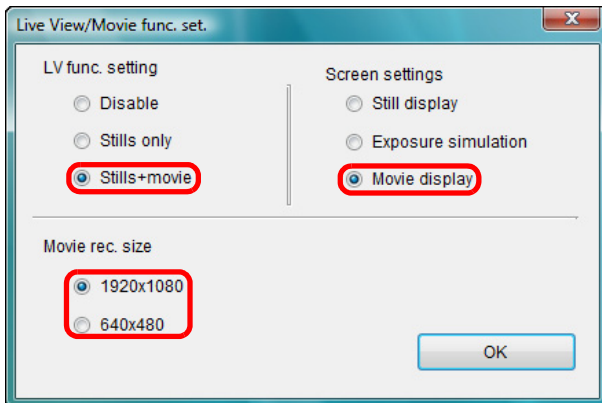
-  **5D Mk II**
- 1 Prepare for Live View shooting.**
 - Follow the procedure from step 1 to step 3 for “Remote Live View Shooting” (p.25).

- 2 Click [Live View/Movie func. set.].**



→ The [Live View/Movie func. set.] window appears.

- 3 Select [Stills+movie] and [Movie display], set the movie recording size.**

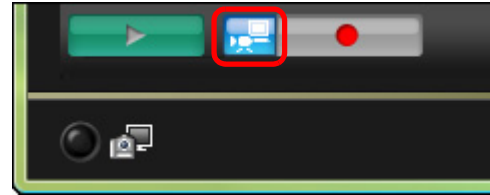



- 4 Click the [OK] button.**


→ The [Live View/Movie func. set.] window closes, and the [Remote Live View window] appears.

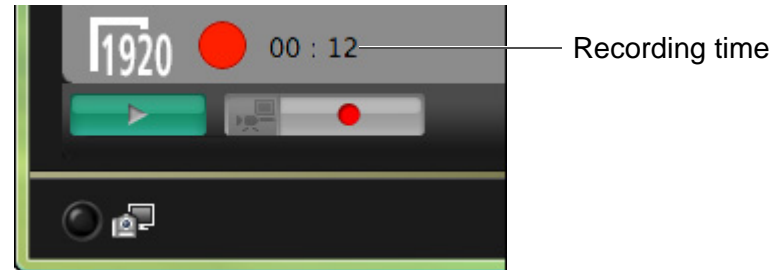
- 5 Focus (p.28, p.30).**


- 6 Click the [] button at the bottom left of the [Remote Live View window].**



- 7 Click the [] button and begin shooting.**



→ At the bottom left of the [Remote Live View window], a [] icon and the recording time are displayed.



- Click the [] button again to end shooting.
- After you close the [Remote Live View window], the file names of the image data shot in movie mode (movie/still image) appear in a list.

After specifying [Destination Folder] and [File Name], click the [OK] button in the window, and image data will be downloaded from the camera's memory card to your computer.

Image data having a check mark removed from its file name are not downloaded. Afterward, when downloading image data to your computer from the camera's memory card, use the method described on p.6 to p.9 of this Instruction Manual to download.

 Also when operating the camera to shoot movies with Remote Live View shooting, click the [] button before shooting.

Introduction

Contents at a Glance

Downloading Images

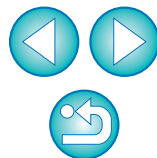
Camera Settings

Remote Shooting

Preferences

Reference

Index





REBELT1i

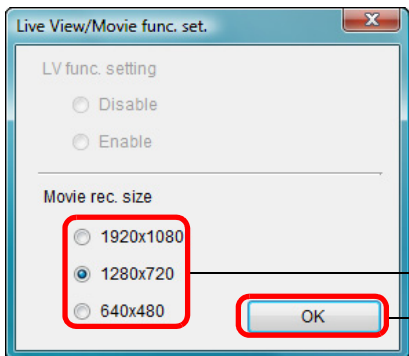
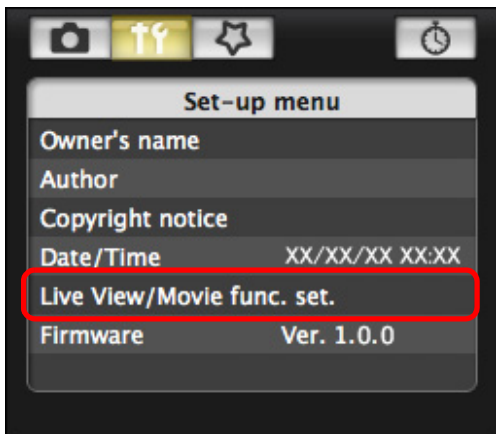
500D

1 Prepare for Live View shooting.

- Follow the procedure of step 1 and step 2 for “Remote Live View Shooting” (p.25).

2 Set the camera's mode dial to < [Live View] >.

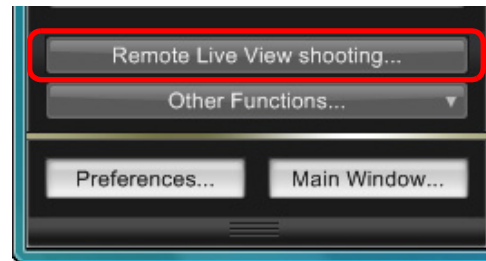
- When setting the movie recording size, click [Live View/Movie func. set.], display the [Live View/Movie func. Set.] window before setting.



Select

Click

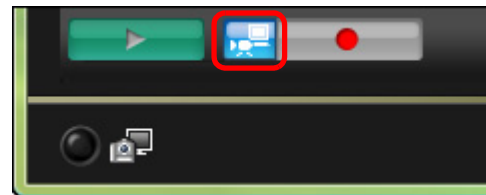
3 Click [Remote Live View shooting].



→ The [Remote Live View window] appears.

4 Focus (p.28, p.30).

5 Click the [[Remote Live View]] button at the bottom left of the [Remote Live View window].



Introduction

Contents at a Glance

Downloading Images

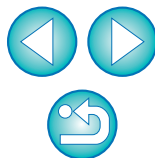
Camera Settings

Remote Shooting

Preferences

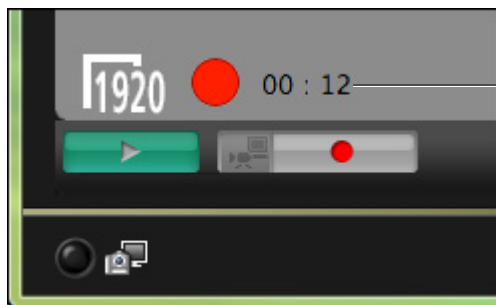
Reference

Index




6 Click the [] button and begin shooting.

→ At the bottom left of the [Remote Live View window], a [] icon and the recording time are displayed.





Recording time

- Click the [] button again to end shooting.
- After you close the [Remote Live View window], the file names of the image data shot in movie mode (movie/still image) appear in a list.

After specifying [Destination Folder] and [File Name], click the [OK] button in the window, and image data will be downloaded from the camera's memory card to your computer.

Image data having a check mark removed from its file name are not downloaded. Afterward, when downloading image data to your computer from the camera's memory card, use the method described on [p.6](#) to [p.9](#) of this Instruction Manual to download.

 Also when operating the camera to shoot movies with Remote Live View shooting, click the [] button before shooting.

Introduction

Contents at a Glance

Downloading Images

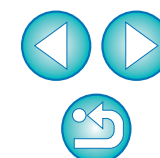
Camera Settings

Remote Shooting

Preferences

Reference

Index




Timer-controlled Shooting

Two types of timer shooting are available where the camera automatically takes shots at a specified time or a specified number.


Timer Shooting

You can automatically take a shot when the specified time elapses.

- 1 **Display the capture window (p.25).**
- 2 **Click the [] button.**
 - The [Timer shooting settings] dialog box appears.
- 3 **Enter a delay time and click the [Start] button.**
 - Enter a value between 0 seconds and 99 minutes and 59 seconds in one-second increments.
 - The shot is taken when the specified time elapses.

Interval Timer Shooting

You can automatically take shots by setting the interval between shots and the number of shots to be taken.

- 1 **Display the capture window (p.25).**
- 2 **Click the [] button.**
 - The [Timer shooting settings] dialog box appears.
- 3 **Checkmark [Interval timer shooting].**
- 4 **Enter the shooting interval and the number of shots.**
 - Enter a value between 5 seconds and 99 minutes and 59 seconds in one-second increments.
 - The minimum number of interval-timed shots is two. The number of shots you can take at timed intervals depends on the available space on your computer's hard disk.
- 5 **Click the [Start] button.**
 - The shots are taken at the specified intervals and for the specified number of shots.



On some types of computer, if you set a short interval between shots and there is insufficient time to transfer and save the images, it may not be possible to take shots at the specified interval. In this case, set a longer interval between shots and take the shots again.

Introduction

Contents at a Glance

Downloading Images

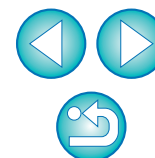
Camera Settings

Remote Shooting

Preferences

Reference

Index



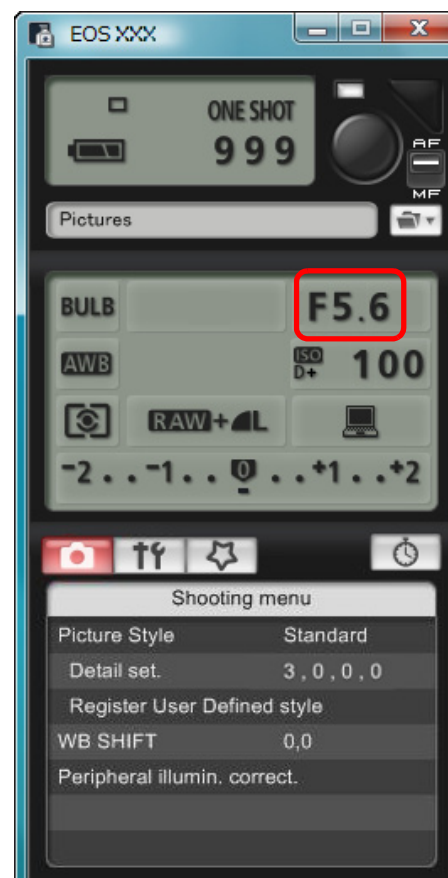
Bulb Exposures


- 1 Display the capture window (p.25).
- 2 Double-click the shooting mode icon and select [BULB].





- For cameras other than 1Ds Mk III, 1D Mk III, 5D Mk II, set the camera's Mode dial to < M > (Manual exposure). Then set the shutter speed to [BULB] in the capture window or on the camera.

- 3 Set the desired aperture.



- 4 Click the [] button.
→ The [Timer shooting settings] dialog box appears.
- 5 Enter the exposure time and click the [Start] button.
 - Enter a value between 5 seconds and 99 minutes and 59 seconds in one-second increments.

 You can start/end bulb exposure without setting an exposure time by clicking the [] button.

Introduction

Contents at a Glance

Downloading Images

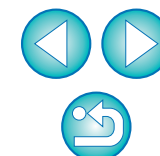
Camera Settings

Remote Shooting

Preferences

Reference

Index



4 Preferences



You can change each of the EU functions in the preferences window to make them easier to use.

Preferences	43
Basic Settings.....	43
Destination Folder	44
File Name	44
Download Images.....	45
Remote Shooting.....	45
Linked Software.....	45

Introduction

Contents at
a Glance

Downloading
Images

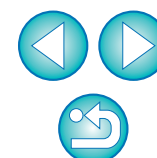
Camera
Settings

Remote
Shooting

Preferences

Reference

Index

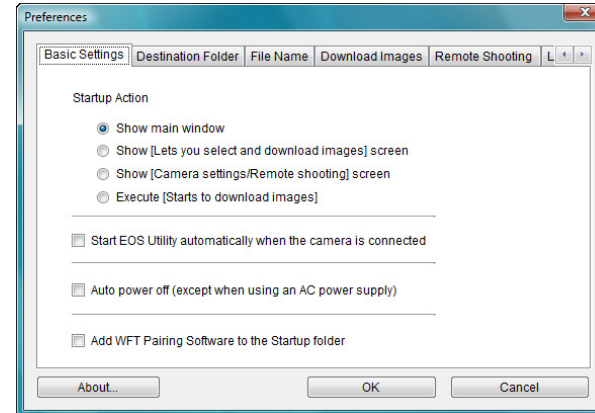


Preferences

- 1 On the main window, click the [Preferences] button.
→ The [Preferences] dialog box appears.
- 2 Specify the required settings and click the [OK] button.
→ The settings are applied to EU.

Basic Settings

You can specify the operation when EU starts up and whether the auto power off function is enabled or disabled.



- When [Show [Lets you select and download images] screen] is selected in [Startup Action], the viewer window (p.8) appears.
- When [Show [Camera settings/Remote shooting] screen] is selected in [Startup Action], the capture window (p.12) appears.
- When [Execute [Starts to download images]] is selected in [Startup Action], the [Save File] dialog box (p.6) appears and downloading to your computer begins. When all the images have been downloaded, DPP starts up automatically and the downloaded images are displayed in DPP's main window.
- If you checkmark [Auto power off], the camera's auto power off function is enabled. If you remove the check mark, the auto power off function remains disabled, even if you set the auto power off function on the camera (only when the camera is connected to a computer.).
- If you checkmark [Add WFT Pairing Software to the Startup folder], the WFT pairing software is added to the Windows start menu.

Introduction

Contents at a Glance

Downloading Images

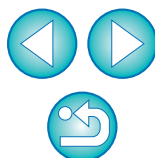
Camera Settings

Remote Shooting

Preferences

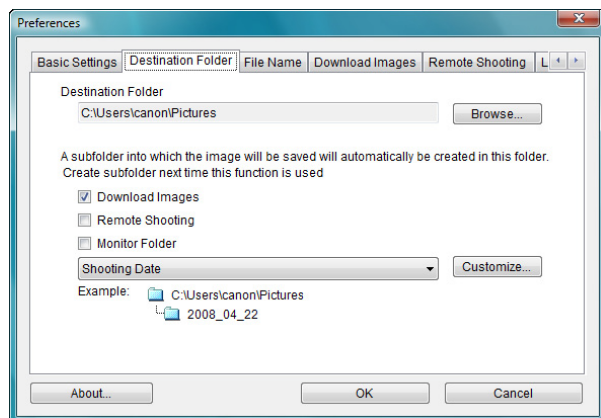
Reference

Index



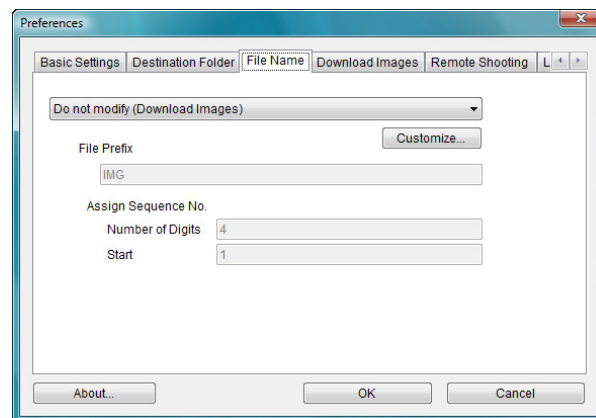
Destination Folder

You can specify the save destination folder of images downloaded from your camera or of images shot remotely.



File Name

You can specify the file name of images downloaded from your camera or of images shot remotely.



- To specify a save destination folder, click the [Browse] button. After you click the [Browse] button and specify a save destination folder, a subfolder is created automatically below the save destination folder you specified.
- After you checkmark any of [Download Images], [Remote Shooting], or [Monitor Folder], a subfolder is generated when the checkmarked function is used.
- You can select the naming rule for a generated subfolder from the list box. You can also customize the naming rule for subfolders by clicking the [Customize] button.



- When specifying an image's file name, select a naming rule for the file from the list box. (If [Do not modify] is selected, images are saved with the file name set in the camera.) You can also customize the naming rule for files by clicking the [Customize] button.
- You can set prefix characters, number of digits for serial numbers, and the start number individually for file names.

Introduction

Contents at a Glance

Downloading Images

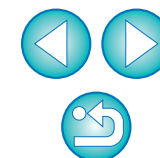
Camera Settings

Remote Shooting

Preferences

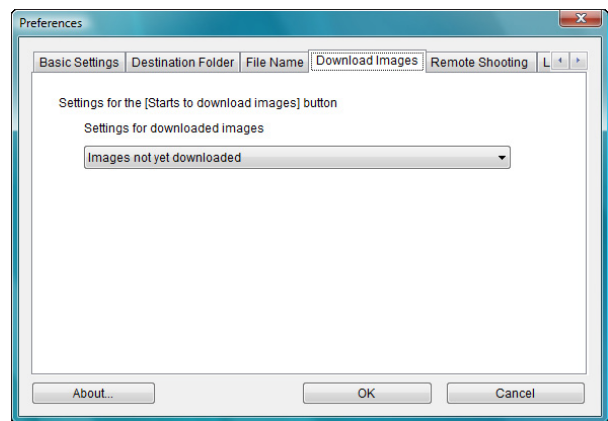
Reference

Index



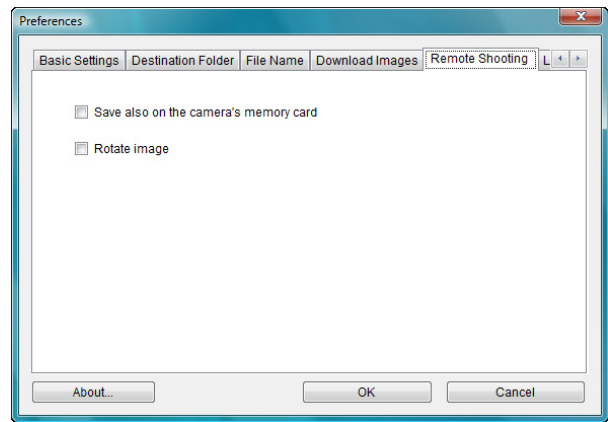
Download Images

From the list box, you can select the images to be downloaded when [Starts to download images] in the main window is clicked.



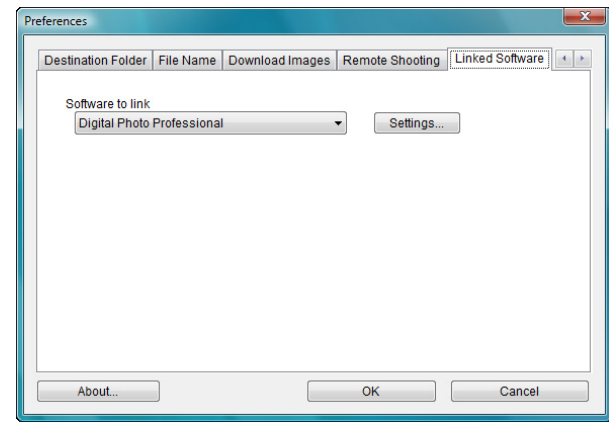
Remote Shooting

You can also save remotely shot images to the memory card inserted in the camera, and regardless of the camera's position at the time the shot is taken, activate the function that rotates the shot image. Set the rotation angle in the capture window (p.56).



Linked Software

From the list box, you can select the linked software that starts up when images are downloaded from the camera or when images are shot remotely. Also, you can register third-party software as linked software by clicking the [Settings] button.



- When you have selected ZoomBrowser EX, you can specify the operation for after images are downloaded.
- In the window displayed when you click the [Settings] button, you can specify the type of images to be posted when linked third-party software is started up.

Introduction

Contents at a Glance

Downloading Images

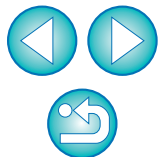
Camera Settings

Remote Shooting

Preferences

Reference

Index



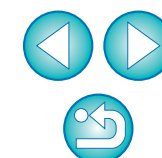


This reference section has been provided to enhance your experience using EU.

It contains various troubleshooting solutions, how to delete EU from your computer and explanations of the various windows.

An index is provided at the end of the chapter for you to easily find information you are looking for.

Troubleshooting	47
Monitor Folder Function (Function for Use with the WFT-E2/E2A, E3/E3A or E4/E4A)	48
Function for Use with the Accessories	49
Folder Structure and File Names in the Memory Card ...	50
Uninstalling the Software	50
Fixing the Plug to the Camera	51
List of Main Window Functions	52
List of Viewer Window Functions	53
List of Register Peripheral Illumination Correction Data Window Functions	54
List of My Menu Settings Window Functions	55
List of Capture Window Functions	56
List of Remote Live View Window Functions	57
List of Zoom View Window Functions	58
List of Test Shooting Window Functions	59
Index	60
About This Instruction Manual	61
Trademark Acknowledgments	61

[Introduction](#)
[Contents at a Glance](#)
[Downloading Images](#)
[Camera Settings](#)
[Remote Shooting](#)
[Preferences](#)
[Reference](#)
[Index](#)



Troubleshooting

If EU is not operating correctly, refer to the items below.

Installation could not be completed correctly

- You cannot install the software if a user setting with privileges other than [Administrator] or [Computer administrator] is selected. Select a user setting with [Administrator] privileges in Windows Vista or [Computer administrator] privileges in Windows XP. For detailed information on selecting the user setting, refer to your computer User's Manual.

EU does not start up

- If EU does not start up even when you have set the camera's power switch to < ON >, either double-click the [EOS Utility] icon on the desktop or click the  button ([Start] button in Windows XP), select [All Programs] ► [Canon Utilities] ► [EOS Utility] ► [EOS Utility] to start up EU.

EU and the camera are not communicating

- EU does not operate correctly on a computer if its system requirements does not meet. Use EU on a computer with compatible system requirements (p.2).
- Push the plug of the interface cable all the way into the socket. Loose connections can cause faults and malfunctions (p.5).
- Check that the camera's power switch is < ON > (p.5).
- EU and the camera may not communicate normally with a cable other than the EOS DIGITAL camera-dedicated Canon interface cable (p.5).
- Connect your camera and computer directly with the interface cable provided with your camera. Do not connect the camera via a hub; doing so may prevent EU and your camera from communicating normally.
- If you connect multiple USB devices (not including the mouse or keyboard) to your computer, the camera may not communicate normally. If the camera cannot communicate normally, disconnect USB devices other than the mouse or keyboard from your computer.

- Do not connect more than one camera to the same computer. Two or more cameras may not operate normally.
- If there is insufficient charge left in the camera battery, the camera cannot communicate with EU. Either replace with a fully charged battery or use the AC adaptor kit provided with your camera. Your computer does not supply power to the camera through the interface cable.

Communication between EU and the camera disconnected

- Operation of the auto power off function will automatically switch the camera off, disabling communication with EU, if you turn the auto power off function to [ON]. Remove the check mark from [Auto power off] in the [Basic Settings] tab sheet (p.43) of the preferences window or set the auto power off function in the camera to [OFF].
- If you do not perform any operation while the camera and computer are connected, depending on the computer system, a confirmation message may appear on the screen asking whether you wish to continue communicating with the camera. If you do not perform an operation while this message appears, communication with your camera is discontinued and EU shuts down. In this case, turn the camera's power switch to < OFF >, then again to < ON > and start up EU.
- Do not put your computer to sleep while it is connected to the camera. If your computer goes into sleep mode, never disconnect the interface cable while your computer is still in sleep mode. Always wake your computer up while it is still connected to the camera. Depending on the type of computer, disconnecting the interface cable while your computer is in sleep mode could prevent the computer from waking up correctly. Refer to the computer User's Manual for more information on sleep mode.

Remotely shot images using EU do not display in DPP

- In Digital Photo Professional, select the [Tools] menu ► [Sync folder with EOS Utility].

Introduction

Contents at a Glance

Downloading Images

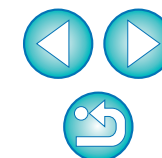
Camera Settings

Remote Shooting

Preferences

Reference

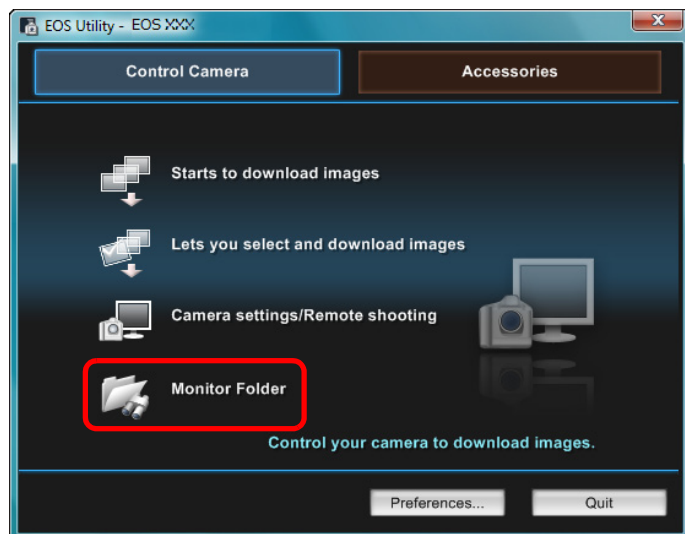
Index



Monitor Folder Function (Function for Use with the WFT-E2/E2A, E3/E3A or E4/E4A)

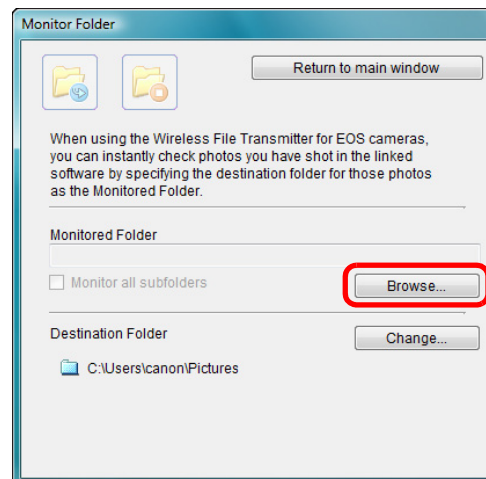
This is a function for checking your images with Digital Photo Professional (hereinafter DPP) in real time using the Wireless File Transmitter WFT-E2/E2A, E3/E3A or E4/E4A (sold separately). For setting the WFT-E2/E2A, E3/E3A or E4/E4A refer to the Instruction Manual provided with the WFT-E2/E2A, E3/E3A or E4/E4A.

1 Click [Monitor Folder].



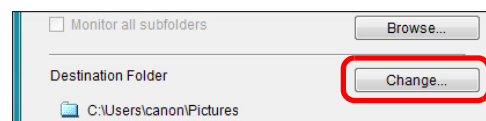
→ The [Monitor Folder] dialog box appears.

2 Click the [Browse] button and specify the save destination folder for shot images.



• You can specify the save destination folder for the shot images set in the WFT-E2/E2A, E3/E3A or E4/E4A.

3 Click the [Change] button and specify the transfer destination folder.



4 Click the [] button.

→ Image transfer preparation is complete.

5 Take a shot.

- If images are saved in the folder specified in step 2, they are transferred/saved in the folder specified in step 3.
- DPP starts up and the images saved in the folder specified in step 3 are displayed.

! You cannot specify the same folders in step 2 and step 3.

📄 You can change the software that starts up in step 5, from DPP to ZoomBrowser EX or other software (p.45).

Introduction

Contents at a Glance

Downloading Images

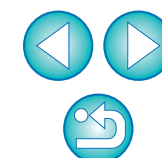
Camera Settings

Remote Shooting

Preferences

Reference

Index



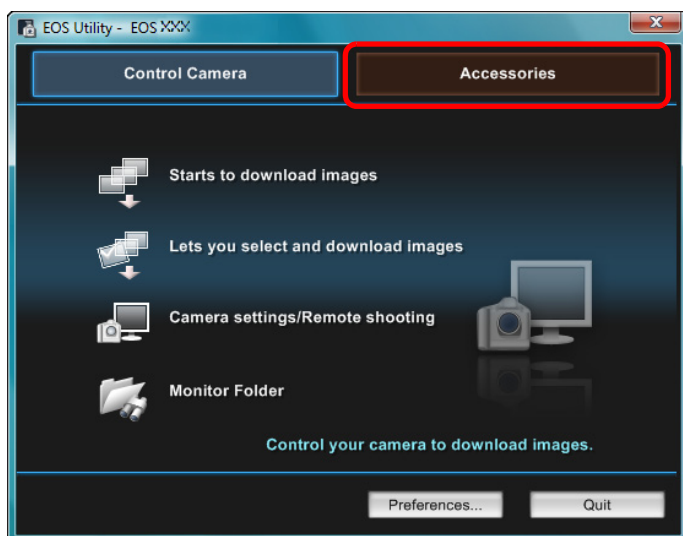
Function for Use with the Accessories

If you have the Wireless File Transmitter WFT-E2/E2A, E3/E3A or E4/E4A (sold separately) or the Original Data Security Kit OSK-E3 (sold separately), you can start up the previously mentioned accessory software from EU. And you can also start up the Picture Style Editor (Picture Style file creating software).

For details on using each software, refer to the instruction manual for the software. For Picture Style files, refer to [p.18](#).

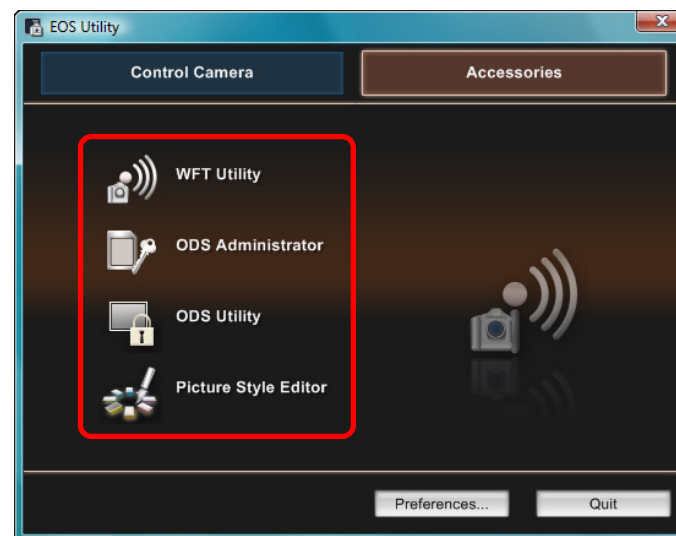
1 Connect your camera and computer, and then start up EU ([p.5](#)).

2 Click the [Accessories] tab.



→ The [Accessories] tab sheet appears.

3 Click the software you want to start up.



→ The clicked software starts up.

Introduction

Contents at a Glance

Downloading Images

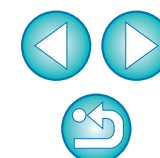
Camera Settings

Remote Shooting

Preferences

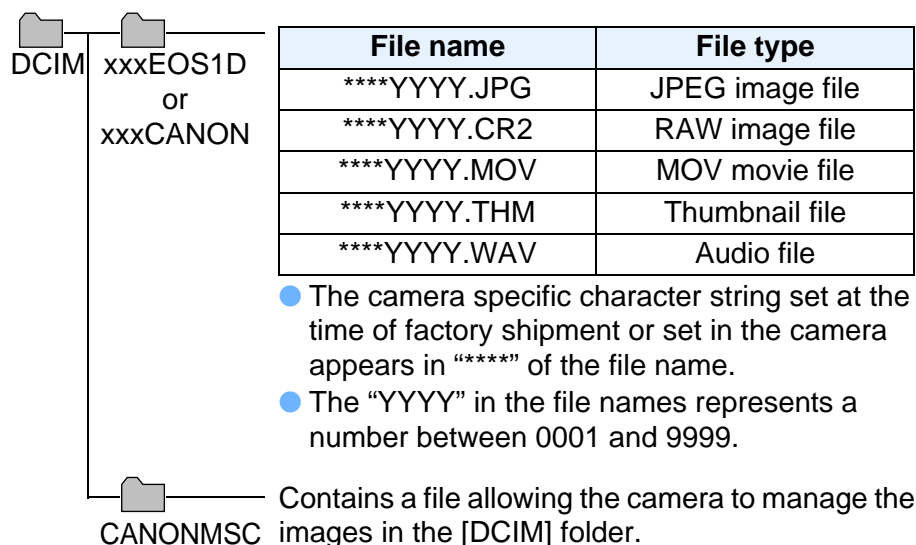
Reference

Index



Folder Structure and File Names in the Memory Card

Images shot with the camera are saved in the memory card's [DCIM] folder with the following folder structure and file names. Refer to the following when copying images to your computer using a card reader.



- The “xxx” in the folder names represents a number between 100 and 999.
- For the 1D series cameras, the folder structure is the same for CF cards and SD cards.
- When you perform DPOF settings on the camera, a [MISC] folder is created. The files that manage the DPOF settings are saved in the [MISC] folder.
- A thumbnail file is a file saved with the same file name as the movie and includes shooting information. When you play a movie with the camera, both the movie file and the thumbnail file are required.

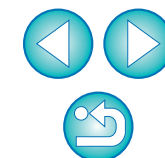


When Adobe RGB is specified, the file names of images shot with your camera have an underscore “_” as the first character.

Uninstalling the Software

- Before starting the software uninstallation, exit all programs you are using.
- Log in under the Administrator privileges when uninstalling the software.
- To prevent computer malfunctions, always restart your computer after you have uninstalled the software. Also, reinstalling the software without first restarting your computer is likely to result in computer malfunctions.

- 1 Click the [🌐] button ([Start] button in Windows XP), select [All Programs] ► [Canon Utilities] ► [EOS Utility] ► [EOS Utility Uninstall].
- 2 Proceed with the uninstallation as directed by the on-screen messages.
→ The software is uninstalled.

[Introduction](#)[Contents at a Glance](#)[Downloading Images](#)[Camera Settings](#)[Remote Shooting](#)[Preferences](#)[Reference](#)[Index](#)

Fixing the Plug to the Camera

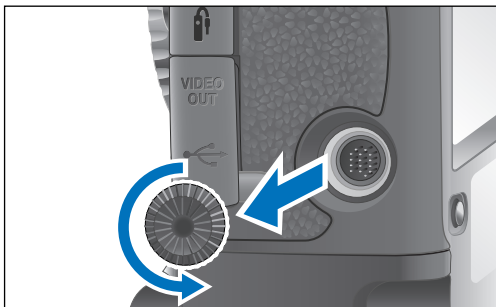


1Ds Mk III

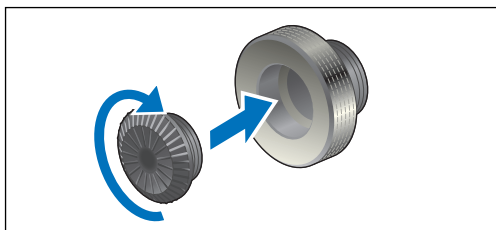
1D Mk III

Fix the plug to the camera with the cable protector to prevent it from detaching during remote shooting.

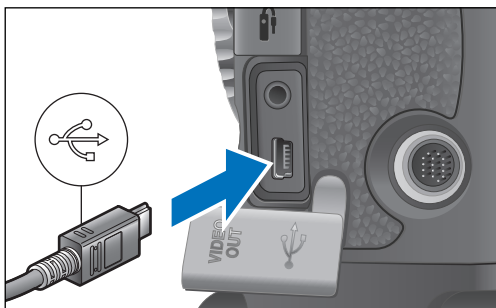
1 Remove the cap.



2 Attach the cap on the fixing screw.

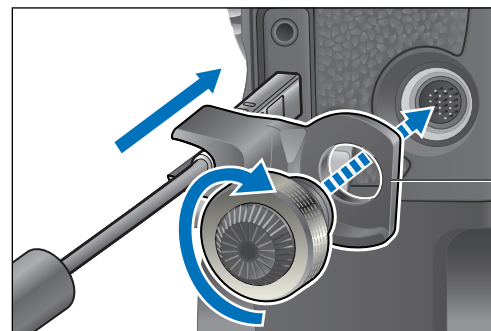


3 Connect the small plug of the cable into the < < > > terminal on your camera.



- Connect the plug with the < < > > mark facing the front of the camera.

4 Attach the cable protector and fix it with the fixing screw.



Cable protector

Introduction

Contents at a Glance

Downloading Images

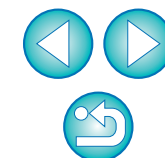
Camera Settings

Remote Shooting

Preferences

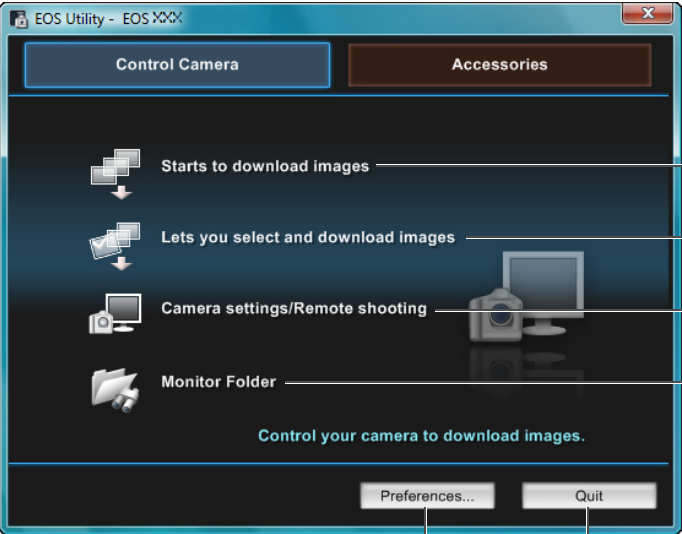
Reference

Index



List of Main Window Functions

Control camera tab sheet



(p.43)

Exits EU (p.10)

Accessories tab sheet



(p.49)

Introduction

Contents at a Glance

Downloading Images

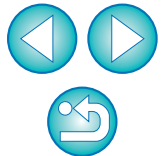
Camera Settings

Remote Shooting

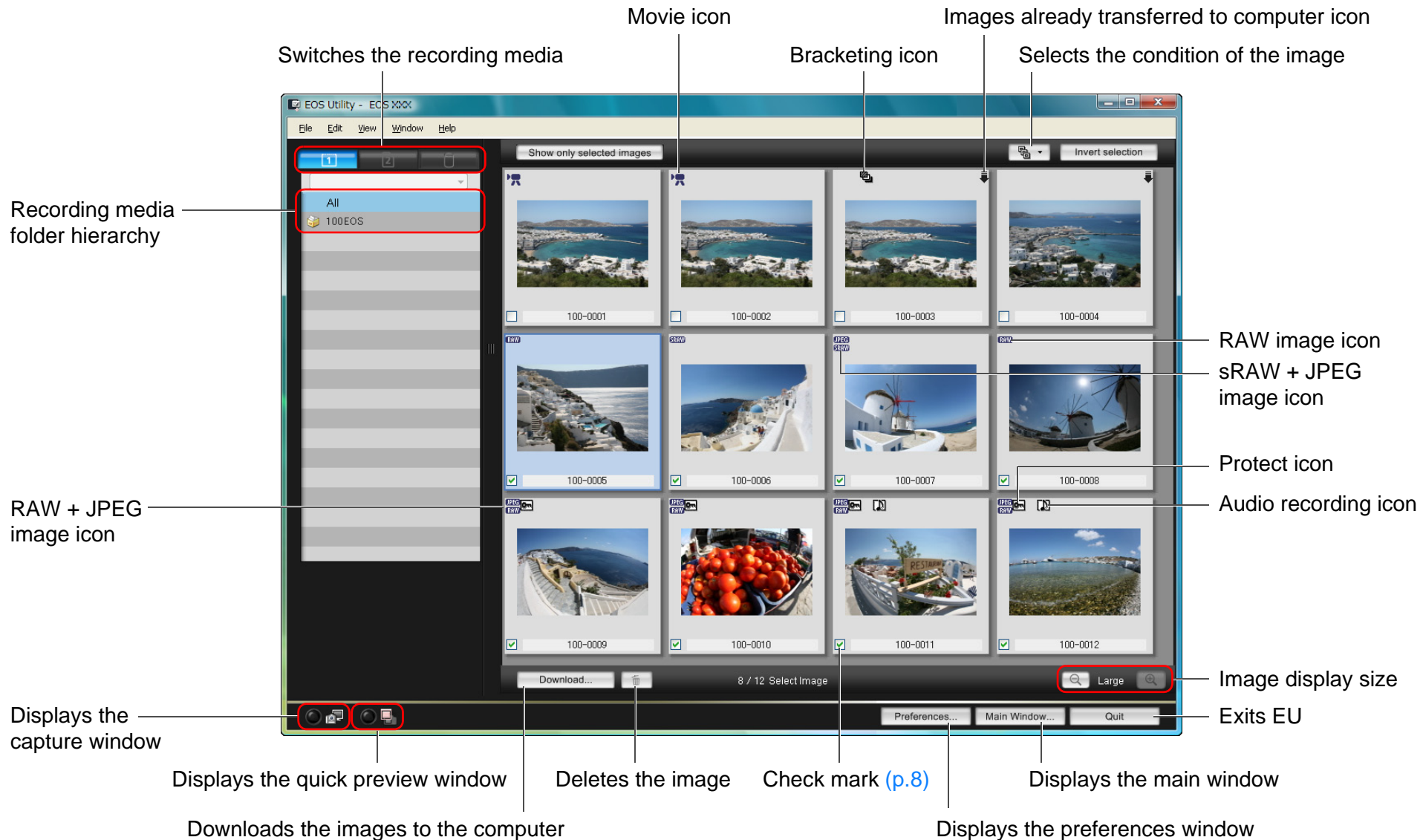
Preferences

Reference

Index



List of Viewer Window Functions (p.7)



Introduction

Contents at a Glance

Downloading Images

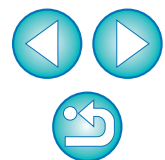
Camera Settings

Remote Shooting

Preferences

Reference

Index



List of Register Peripheral Illumination Correction Data Window Functions (p.21)

- Introduction
- Contents at a Glance
- Downloading Images
- Camera Settings
- Remote Shooting
- Preferences
- Reference
- Index

Displays all the categories

Register peripheral illumination correction data

Ultra wide and wide Standard and medium telephoto Telephoto

Select a lens category

Macro Zoom

Lenses category

☐ L lenses only

☐ EF-S10-22mm f/3.5-4.5 USM

☒ EF-S17-55mm f/2.8 IS USM

☒ EF-S17-85mm f/4-5.6 IS USM

☐ EF-S18-55mm f/3.5-5.6

☒ EF-S18-55mm f/3.5-5.6 IS

☐ EF-S18-55mm f/3.5-5.6 USM

☐ EF-S55-250mm f/4-5.6 IS

☐ EF-S60mm f/2.8 Macro USM

Displays lenses selected in [Select a lens category] by category

Extender EF1.4X II EF2X II

Show selected lenses only

Displays only the registered lenses

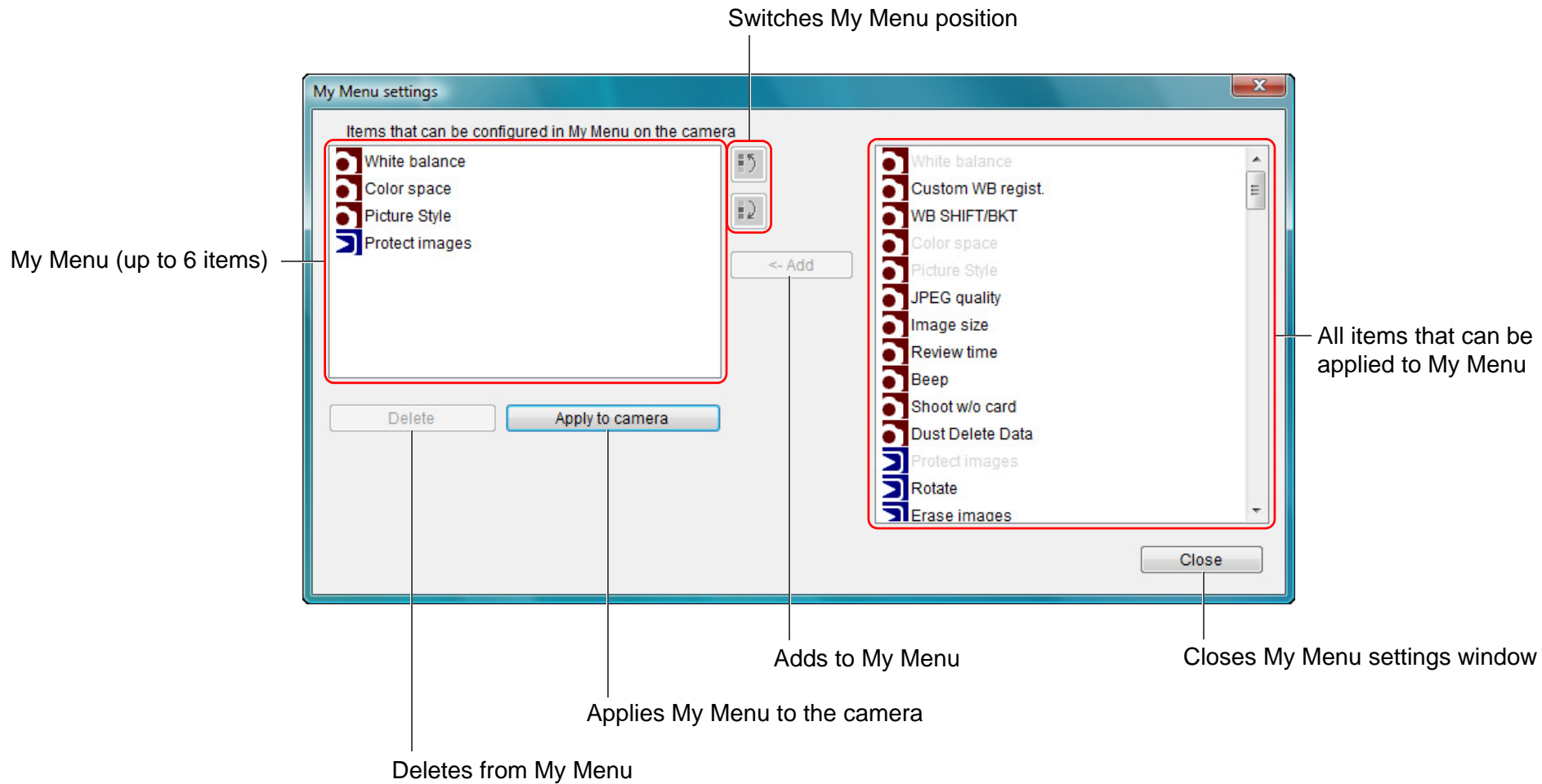
22 / 40

No. of lenses registered in the camera/No. of lenses that can be registered

OK Cancel

Lens names displayed in the [Register peripheral illumination correction data] window may be partially shortened depending on the lens type.

List of My Menu Settings Window Functions (p.22)



Introduction

Contents at a Glance

Downloading Images

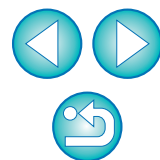
Camera Settings

Remote Shooting

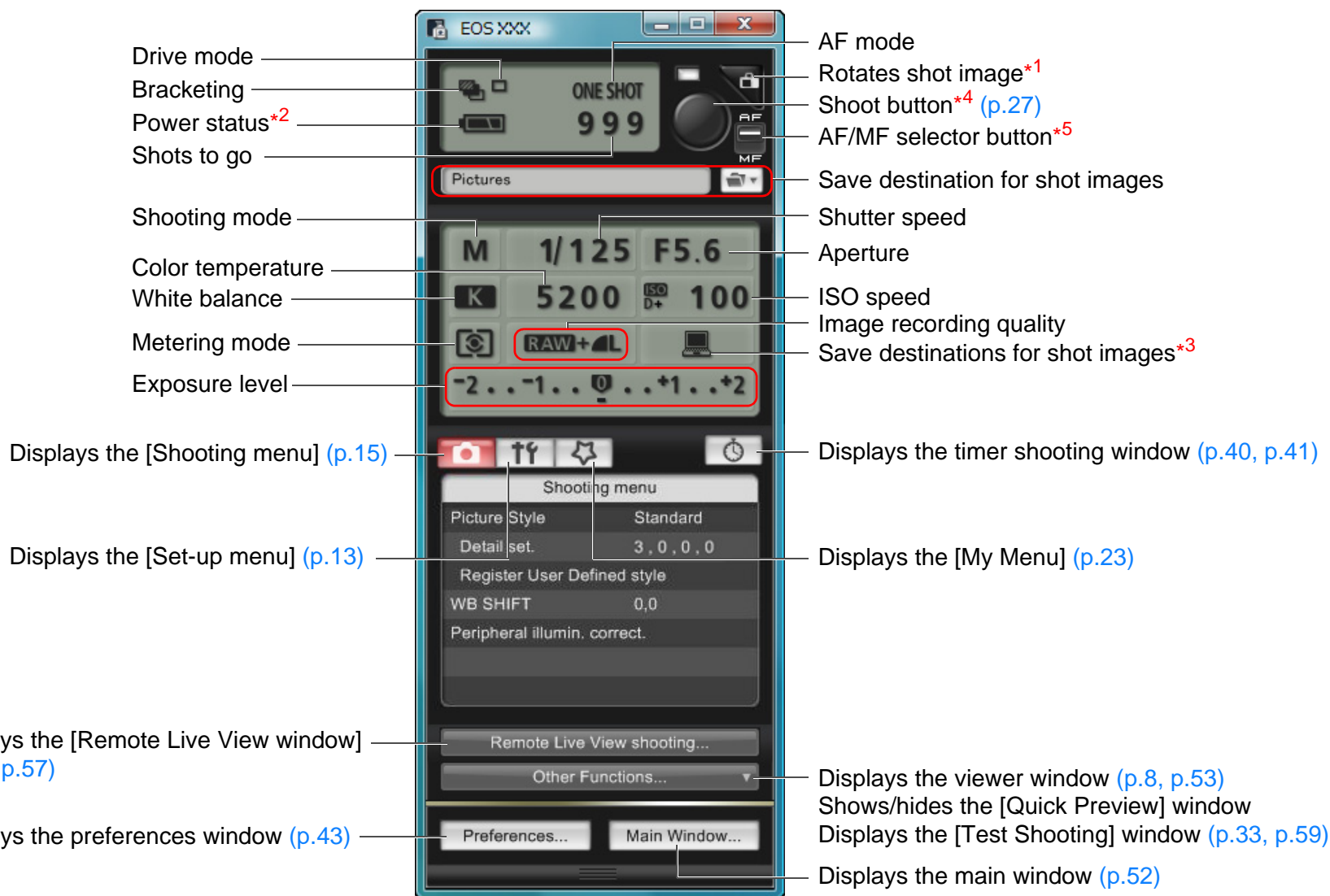
Preferences

Reference

Index



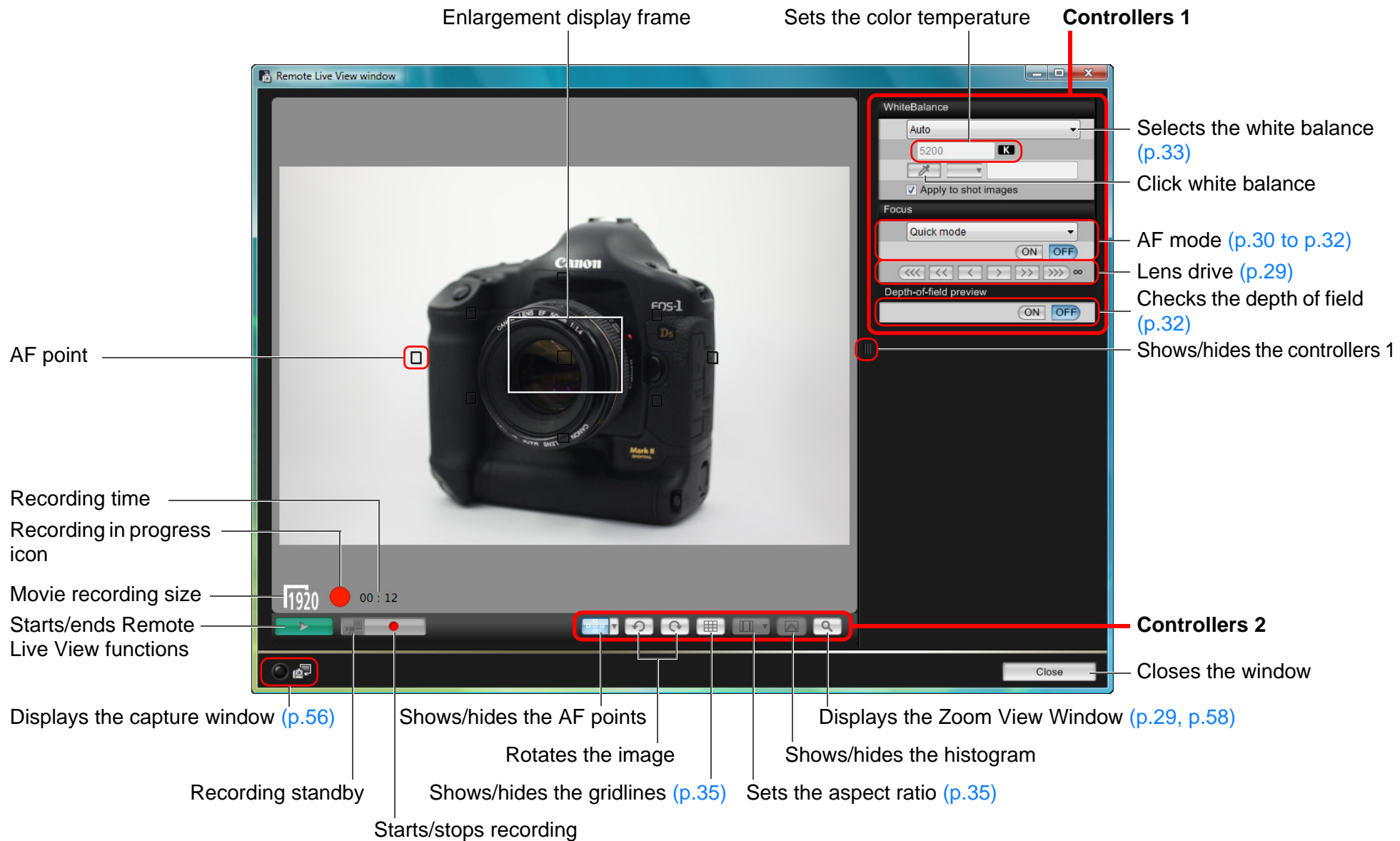
List of Capture Window Functions



- *1 Each time you click the button, the shot image rotates 90 degrees. To make this function available, checkmark [Rotate image] in the [Remote Shooting] tab sheet (p.45) in preferences.
- *2 When using the battery, the charge level is displayed.
- *3 You can select whether the save destination for shot images is only the computer or both the computer and the memory card inserted in the camera. When in movie mode, they are only saved to the memory card in the camera.

- *4 On 5D Mk II 50D REBELT1i 500D, when the AF/MF selector button is set to [AF], AF/AE is performed when the cursor is moved to the Shoot button.
- *5 Displayed only on 5D Mk II 50D REBELT1i 500D. Even when it is set to [MF], "AF" appears in the shooting information for the shot image. Setting < A-DEP > as the camera's shooting mode disables this button.

List of Remote Live View Window Functions [\(p.25\)](#)



Introduction

Contents at a Glance

Downloading Images

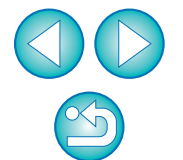
Camera Settings

Remote Shooting

Preferences



Reference

Index



List of Zoom View Window Functions (p.28)



* Clicking the [] button switches to a quality suited to focusing while viewing on your camera's LCD monitor; clicking the [] button switches to a quality suited to focusing while viewing on your computer.

Introduction

Contents at a Glance

Downloading Images

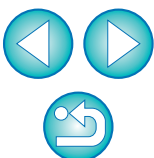
Camera Settings

Remote Shooting

Preferences

Reference

Index



List of Test Shooting Window Functions (p.33)

Introduction

Contents at a Glance

Downloading Images

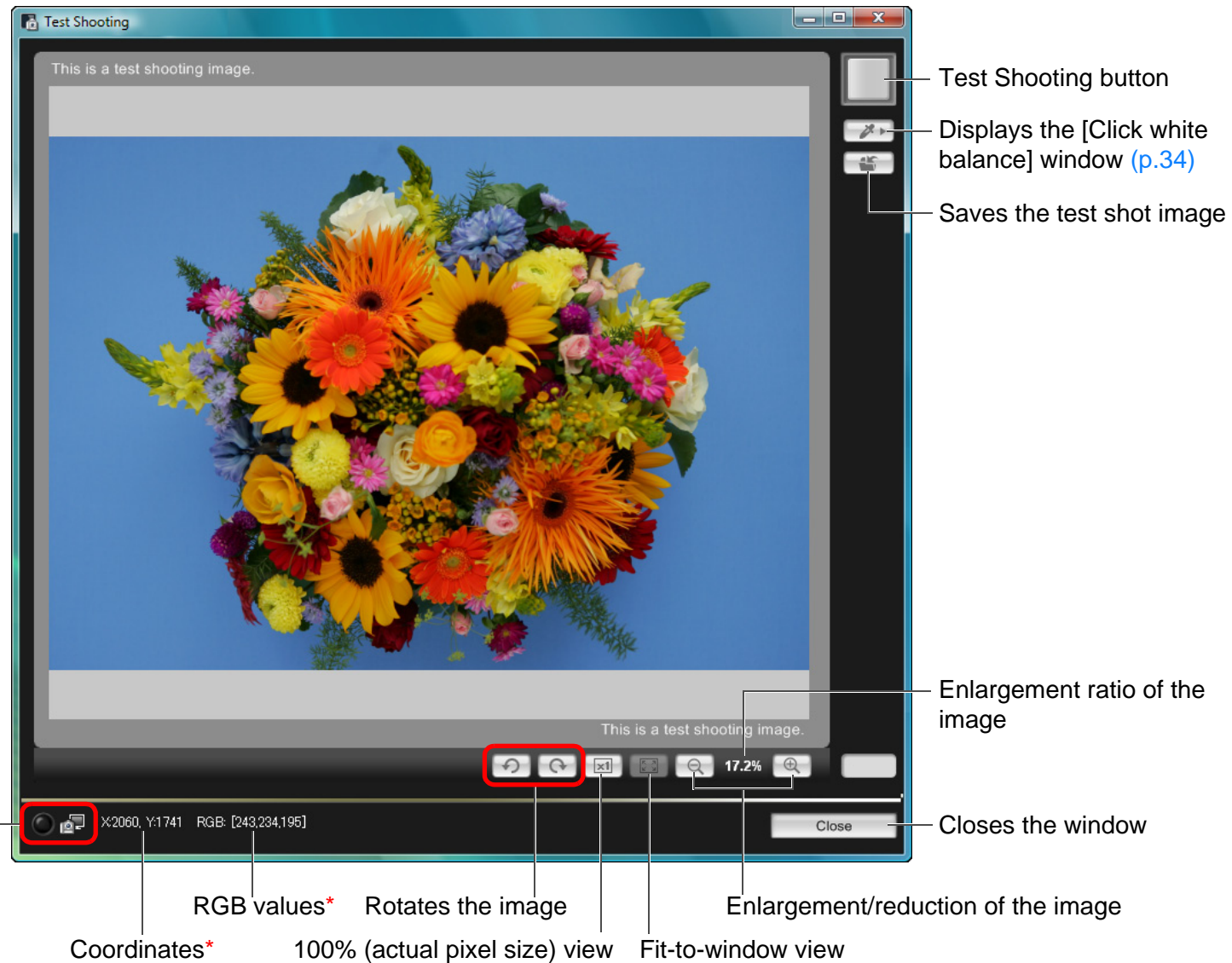
Camera Settings

Remote Shooting

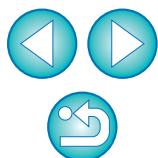
Preferences

Reference

Index



* Only displayed when the [Click white balance] window is displayed (p.34) and the cursor is moved to over the point to be the standard for white for the image.



Index

A

Adjusting the Horizontal Alignment of the Camera (Remote Live View Shooting)	35
Adjusting the Vertical Alignment of the Camera (Remote Live View Shooting)	35
Adjusting the White Balance	21
Applying Personal White Balance	19
Applying Picture Style Files	18
Attaching the Cable Protector	51

B

Basic Settings (Preferences)	43
Bulb Exposures	41

C

Capture Window	56
My Menu	23
Set-up Menu	13
Shooting Menu	15
Changing the Aspect Ratio (Remote Live View Shooting)	35
Changing the White Balance in the Remote Live View Window (Remote Live View Shooting)	33
Checking the Depth of Field and Exposure (Remote Live View Shooting)	32
Connecting the Camera to Your Computer	5

D

Destination Folder Settings (Preferences)	44
Download Images Settings (Preferences)	45
Downloading All the Images in a Single Operation	6
Downloading Images with a Card Reader	9
Downloading Selected Images	7

E

Exiting the EOS Utility	10
-------------------------------	----

F

File Name Settings (Preferences)	44
----------------------------------------	----

Focusing Automatically (Using AF) (Remote Live View Shooting)	30
Focusing in Face Detection Live Mode (Remote Live View Shooting)	32
Focusing in Live Mode (Remote Live View Shooting)	31
Focusing in Quick Mode (Remote Live View Shooting)	30
Focusing Manually (Remote Live View Shooting)	28
Focusing Using AF	30
Folder Structure and File Names	50
Folder Structure and File Names in the Memory Card	50
Function for Use with Original Data Security Kit OSK-E3	49
Function for Use with OSK-E3	49
Function for Use with WFT-E2/E2A, E3/E3A or E4/E4A	48
Function for use with Wireless File Transmitter WFT-E2/E2A, E3/E3A or E4/E4A	48

I

Interval Timer Shooting	40
-------------------------------	----

L

Linked Software Settings (Preferences)	45
----------------------------------------------	----

M

Main Window	52
My Menu (Capture Window)	23
My Menu Settings	22
My Menu Settings Window	23, 55

R

Register Peripheral Illumination Correction Data Window	54
Registering Peripheral Illumination Correction Data for the Lens	21
Remote Live View Shooting	25
Remote Live View Window	27, 57
Remote Live View Window Functions	28
Adjusting the Horizontal Alignment of the Camera	35
Adjusting the Vertical Alignment of the Camera	35
Changing the Aspect Ratio	35
Changing the White Balance in the Remote Live View Window ...	33
Checking the Depth of Field and Exposure	32
Focusing Automatically (Using AF)	30

Introduction

Contents at
a Glance

Downloading
Images

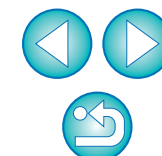
Camera
Settings

Remote
Shooting

Preferences

Reference

Index



Focusing in Face Detection Live Mode	32
Focusing in Live Mode	31
Focusing in Quick Mode	30
Focusing Manually	28
White Balance for Flash Photography	33
Remote Shooting Settings (Preferences)	45

S

Setting JPEG Quality	20
Setting Picture Styles	16
Setting the Camera Owner's Name	12
Setting the Camera's Date and Time	12
Setting the Copyright Notice for the Image	12
Set-up Menu (Capture Window)	13
Shooting by Operating the Camera	36
Shooting Menu (Capture Window)	15
Shooting Movies	37
Specifying Preferences	43
Basic Settings	43
Destination Folder Settings	44
Download Images Settings	45
File Name Settings	44
Linked Software Settings	45
Remote Shooting Settings	45
Starting up EOS Utility	5
Supported Camera	2
System Requirements	2

T

Test Shooting Window	59
Timer Shooting	40

U

Uninstalling the Software	50
---------------------------------	----

V

Viewer Window	8, 53
---------------------	-------

W

White Balance for Flash Photography (Remote Live View Shooting) .	33
-------------------------------------------------------------------	----

Z

Zoom View Window	29, 58
------------------------	--------

About This Instruction Manual

- It is prohibited to reproduce, in whole or part, the contents of this Instruction Manual without permission.
- Canon may change without notice the software specifications and contents of this Instruction Manual.
- The software screens and displays printed in this Instruction Manual may differ slightly from the actual software.
- The content of this Instruction Manual has been reviewed thoroughly. However, if you should notice any errors or omissions, please contact a Canon Service Center.
- Please note that irrespective of the above-mentioned, Canon does not take responsibility for the outcome of the operation of the software.

Trademark Acknowledgments

- Microsoft and Windows are registered trademarks or trademarks of Microsoft Corporation in the United States and/or other countries.
- Other names and products not mentioned above may be registered trademarks or trademarks of their respective companies.

Introduction

Contents at a Glance

Downloading Images

Camera Settings

Remote Shooting

Preferences

Reference

Index

