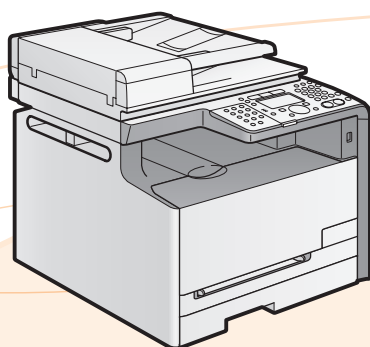


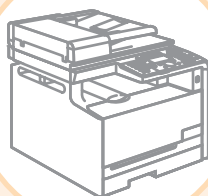
Canon

Color imageCLASS MF8050Cn

Starter Guide



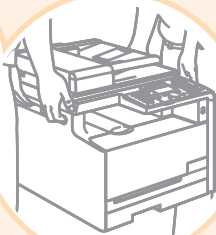
1



Preface

 [Next Page](#)

2



Installing the Machine

 [P. 4](#)

3



Configuring and
Connecting the Fax

 [P. 11](#)

4



Connecting to a Computer
and Installing the Drivers

 [P. 15](#)

Read this guide first.

Please read this guide before operating this product.

The remarks for important safety instructions are described in "Basic Operation Guide." Read the guide also.

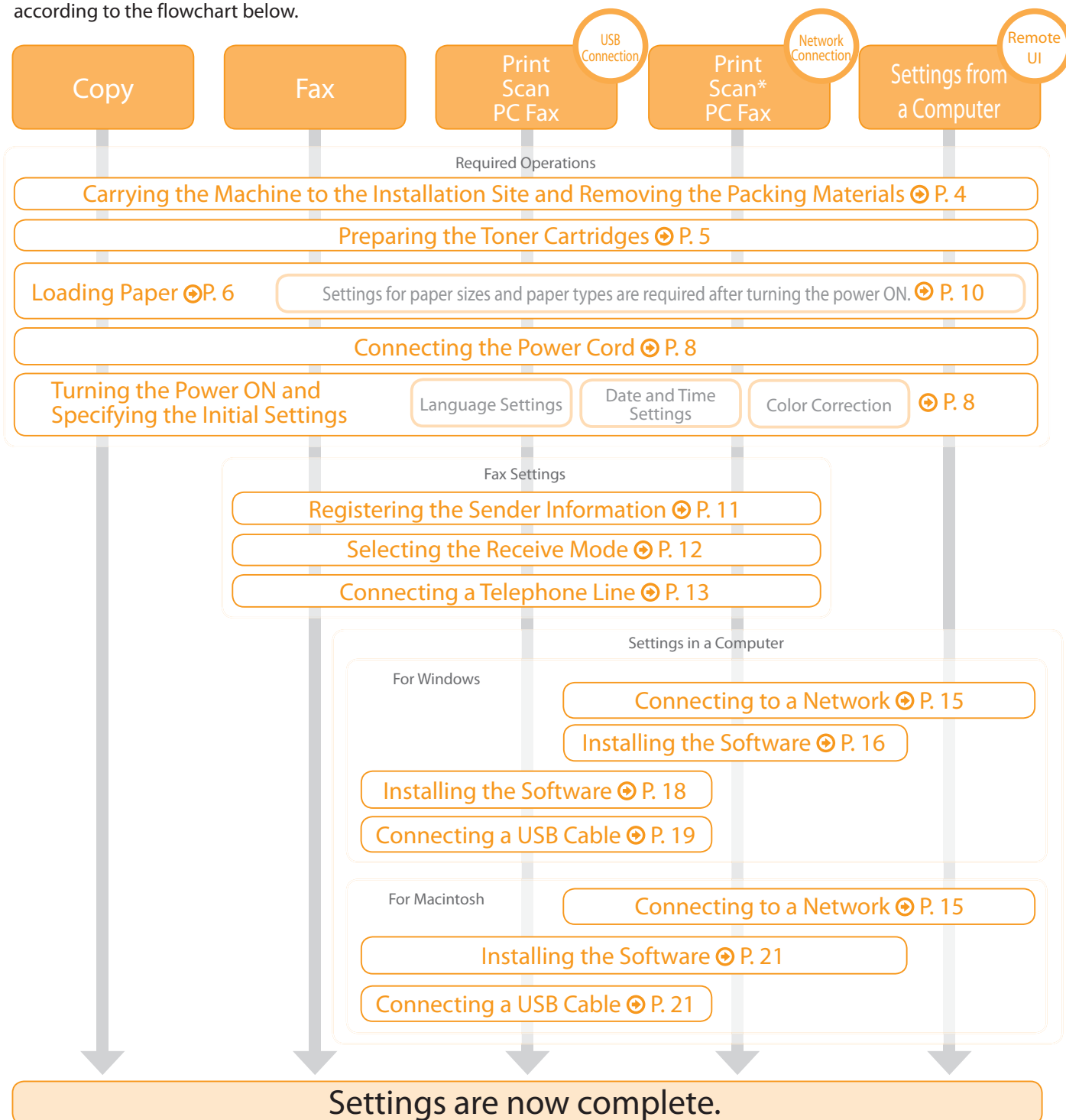
After you finish reading this guide, store it in a safe place for future reference.

Appendix

 [P. A-1](#)

Setting Up the Machine to Suit Your Needs

Determine which machine functions (Copy, Print, Fax, PC Fax, Scan, Remote UI) you intend to use, and make settings according to the flowchart below.



* Network scan can be performed only on Windows.

Available Features

○ : available — : not available

	Copy	Print	2-sided Printing	Fax (PC Fax)	USB Scan	Network Scan (Windows)	Network Scan (Macintosh)	Remote UI	ADF (1-sided)	ADF (2-sided)
MF8050Cn	○	○	—	○	○	○	—	○	○	—

Checking the Supplied Accessories

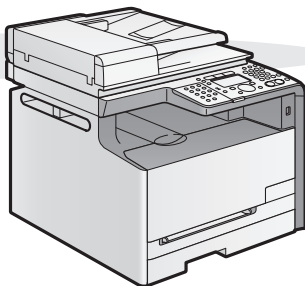
1. Confirm that all the supplied accessories are contained in the box.



The machine unit

The following parts are already installed.

- Paper cassette
- Toner cartridges



If an item is missing or damaged, please contact our Canon Authorized Service Facilities or the Canon Customer Care Center.

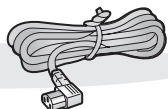
About the LAN cable

The machine does not come with a LAN cable or a hub. Have cables or a hub ready as needed.

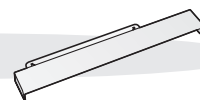
- Use a Category 5 or higher twisted pair cable.
- If you want to connect the machine to a 100BASE-TX Ethernet network, all the devices to be connected to the LAN must support 100BASE-TX.



Power cord



Legal dust cover



Starter Guide (This manual)



Basic Operation Guide



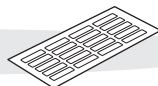
Telephone cable



Limited Warranty Notice



Speed dial label



User Software CD-ROM



Registration Card



Supplied Toner Cartridges

The average yield of the included toner cartridges is as follows.

Average yield of K (Black) toner cartridge	800 sheets
Average yield of Composite C (Cyan), M (Magenta), and Y (Yellow) toner cartridges	800 sheets

The average yield is on the basis of "ISO/IEC 19798"* when printing A4 size paper with the default print density setting.

* "ISO/IEC 19798" is the global standard relating to "Method for the determination of toner cartridge yield for color printers and multi-function devices that contain printer components" issued by ISO (International Organization for Standardization).

For purchasing replacement toner cartridges, see "About replacement toner cartridges" in the e-Manual.

User Software CD-ROM

About the Drivers and Software

The drivers and software included in the CD-ROM supplied with this machine are as follows.

MF Drivers

Printer driver	You can print from an application using the machine by installing the printer driver on your computer. You can process print data at high speed by compressing the print data using the computer's processing capabilities.
Fax driver	If you install the fax driver on your computer, you can select "Print" from an application, select the Canon fax driver as a printer, and specify the output destination and options. The fax driver converts the data into an image that conforms to standard fax protocols so that the data can be printed or saved using the recipient's fax machine.
Scanner driver	You can use the machine as a scanner if you install the scanner driver on your computer.
Network Scan Utility	This software is required for using the scan functions via a network. This software is installed with the scanner driver.

MF Toolbox

MF Toolbox	MF Toolbox is a program which allows you to easily open an image scanned by the scanner in an application, attach the scanned image to an e-mail, and store the scanned image in a hard disk.
------------	---

Additional Software Programs

Presto! PageManager	This is software for managing scanned images.
---------------------	---

Supported Operating Systems

○ : available — : not available

	Windows 2000/XP	Windows Vista/7	Windows Server 2003/Server 2008	Mac OS X (version 10.4.9 or later)
Printer driver	○	○	○ (Only for network connection)	○
Fax driver	○	○	○ (Only for network connection)	○
Scanner driver	○	○	—	○ (Only for USB connection)
Network Scan Utility	○	○	—	—
MF Toolbox	○	○	—	○ (Only for USB connection)
Presto! PageManager	○	○	—	—

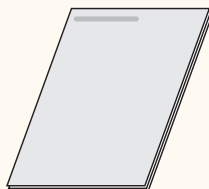
About the Supplied Manuals

Read this manual first.

This manual describes the settings for the machine and software installation. Be sure to read this manual before using the machine.

Starter Guide

This manual

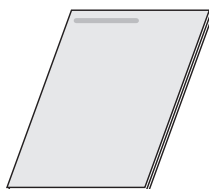


- Preface
- Installing the Machine
- Configuring and Connecting the Fax
- Connecting to a Computer and Installing the Drivers
- Appendix

Read this manual next.

This manual describes the basic machine operations.

Basic Operation Guide



- Before Using the Machine
- Document and Paper Handling
- Copying
- Printing from a Computer
- Registering Destinations in the Address Book
- Using the Fax Functions
- Using the Scan Functions
- Maintenance
- Troubleshooting
- Registering/Setting the Various Functions
- Appendix

Read the desired chapter to suit your needs.

The e-Manual is categorized by subject to find desired information easily.

e-Manual

* The e-Manual is included in the User Software CD-ROM.



- Basic Operation
- Copy
- Fax*
- Print*
- Scan*
- Network Settings
- Security
- Setting and Managing from Computer
- Troubleshooting
- Maintenance
- Setting Menu List
- Specifications

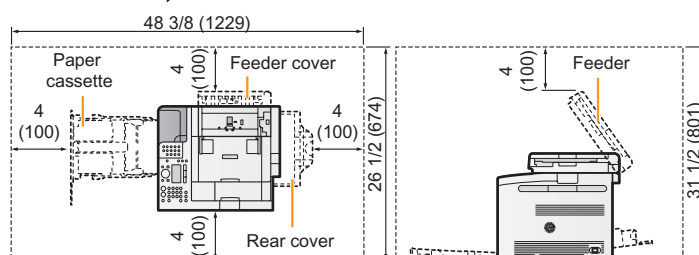
* If you are using Macintosh, see the following Driver Guides for more details on these functions.

- Fax: User Software CD-ROM → [FAX] → [us_eng] → [Documents] → [GUIDE-FAX-US.pdf]
- Print: User Software CD-ROM → [CMFP] → [us_eng] → [Documents] → [GUIDE-CMFP-US.pdf]
- Scan: User Software CD-ROM → [ScanGear MF] → [us_eng] → [Documents] → [GUIDE-SCAN-US.pdf]

Determining the Installation Site

Front View →

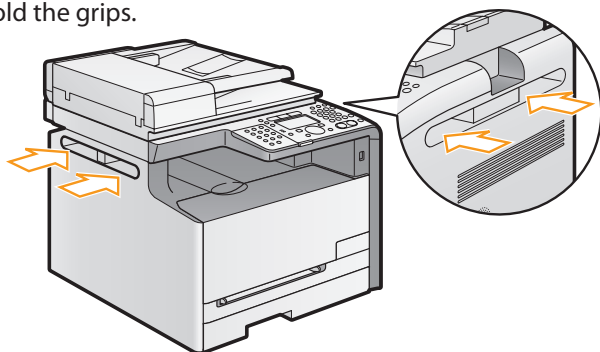
in. (mm)



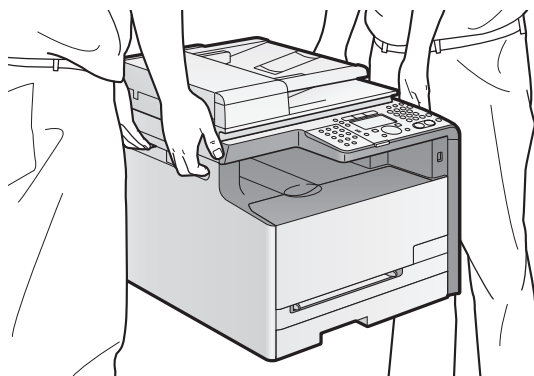
Carrying the Machine to the Installation Site and Removing the Packing Materials

1. Carry the machine to the installation site.

1 Hold the grips.



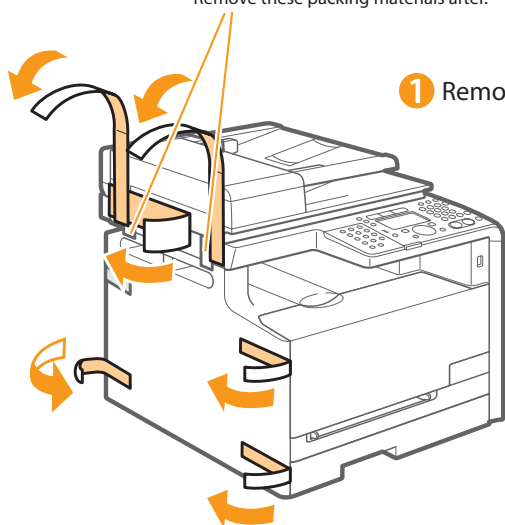
2 Carry the machine with two or more people.



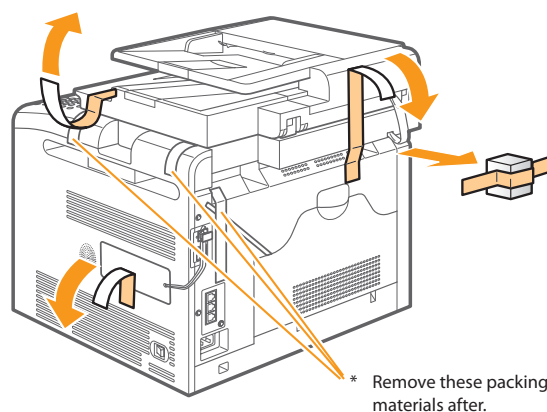
2. Remove the packing materials.

* The packing materials may be changed in form or placement, or may be added or removed without notice.

* Remove these packing materials after.



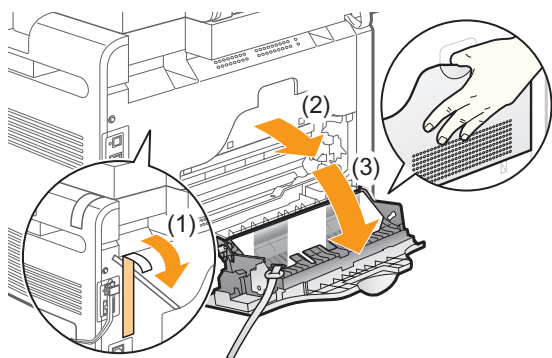
1 Remove the packing materials.



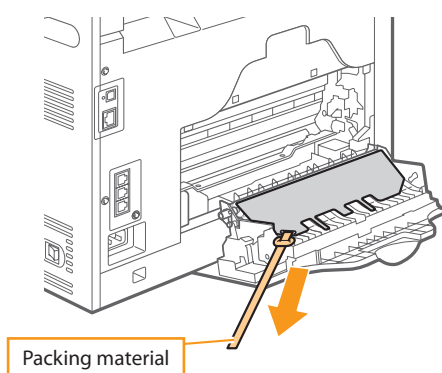
* Remove these packing materials after.

2 Remove the packing material.

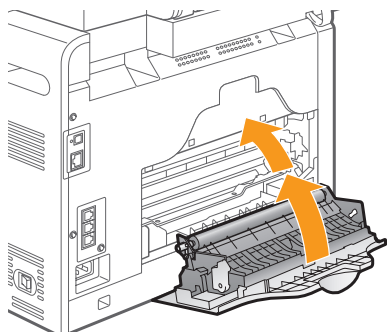
3 Open the rear cover.



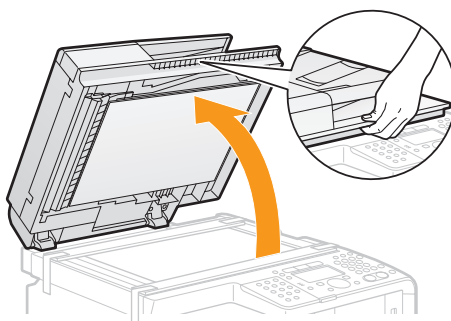
4 Remove the packing material.



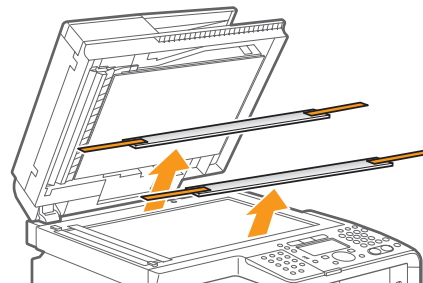
5 Close the rear cover.



6 Open the feeder.



7 Remove the packing materials with tape.

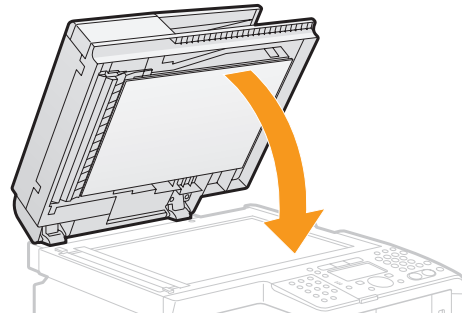


Check!

Did you remove all the packing materials?

- ☐ Tape x10
- ☐ Packing material x1
- ☐ Packing materials with tape x3

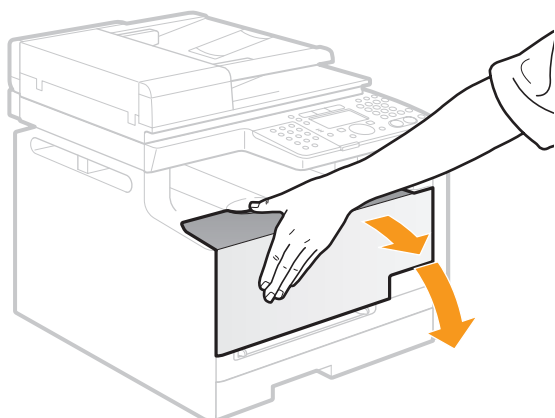
8 Close the feeder.



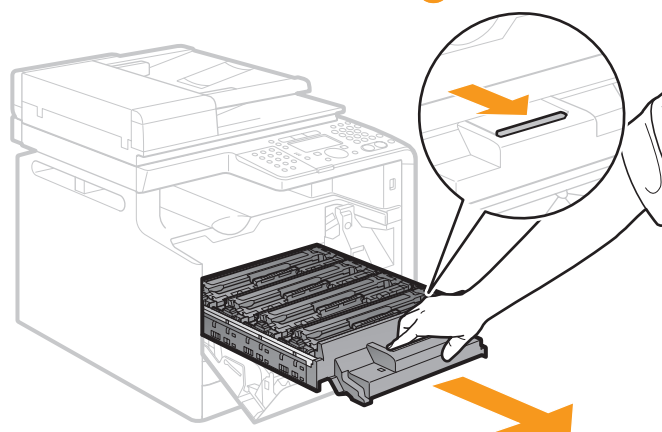
Preparing the Toner Cartridges

1. Open the front cover and pull out the toner cartridge tray.

1 Open the front cover.

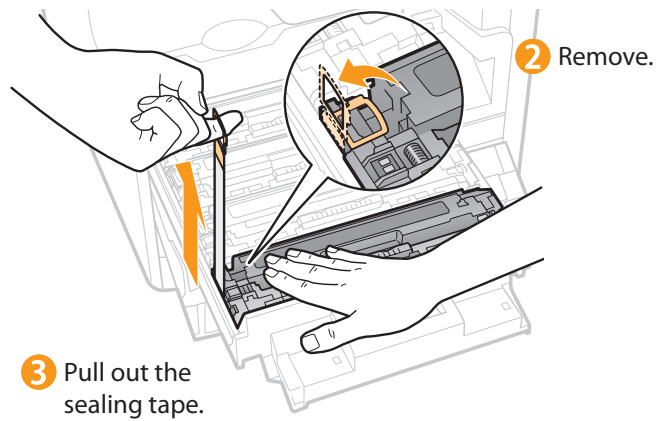
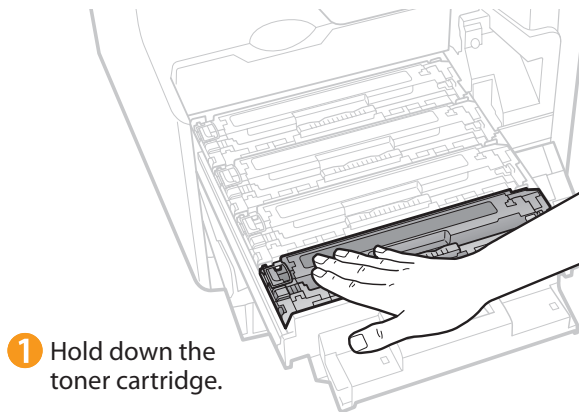


2 Press the lever.



3 Pull out the toner cartridge tray.

2. Pull out the sealing tapes on the four toner cartridges.

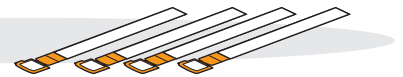


Check!

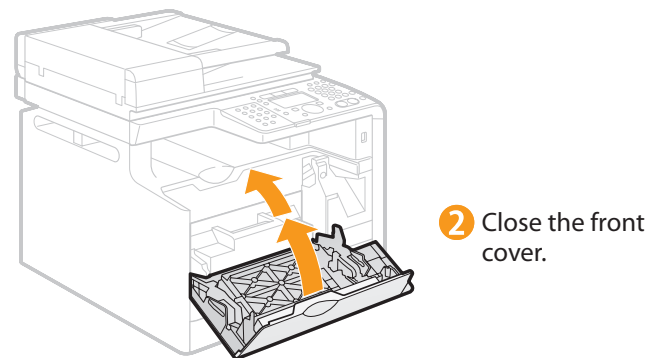
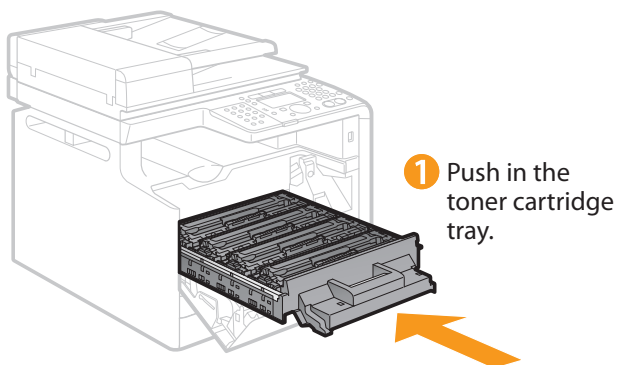
Did you remove all the packing materials?



Sealing tape x4



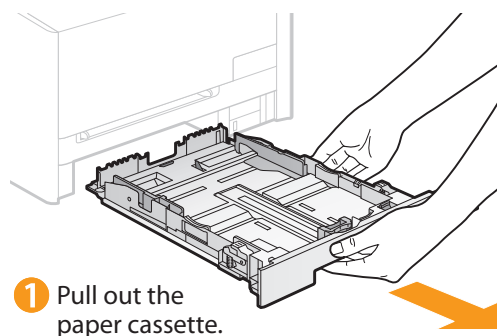
3. Push the toner cartridge tray back in, and then close the front cover.

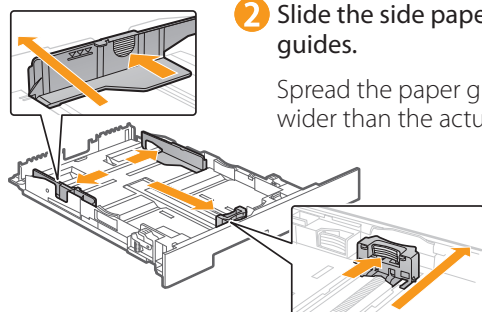


○ Loading Paper

1. Load paper in the paper cassette.

Hold the paper cassette with both hands.

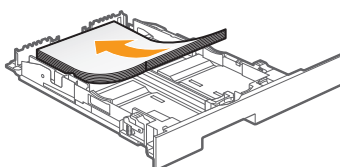




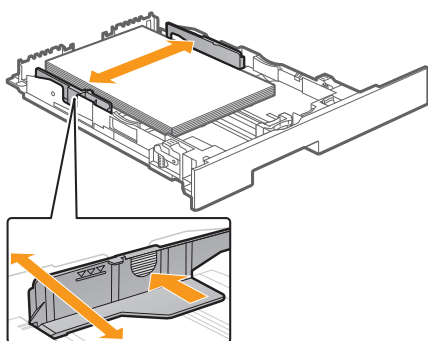
- 2** Slide the side paper guides.
Spread the paper guides a little wider than the actual paper width.

- 3** Hold the lock release lever and slide the paper guides.
Spread the paper guides a little wider than the actual paper width.

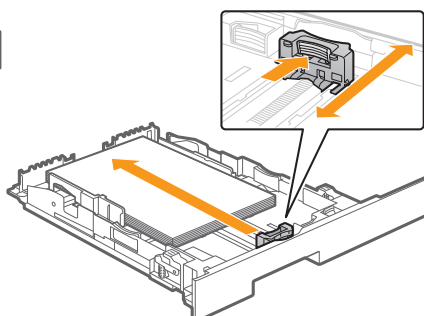
- 4** Load the paper.
Align the edge of the paper stack with the rear side of the paper cassette.



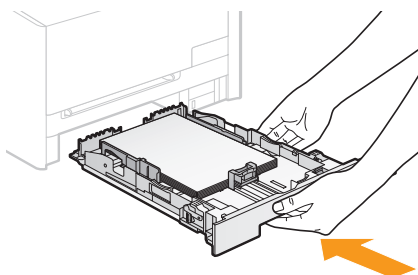
- 5** Slide the side paper guides.
Slide the paper guides to the width of the loaded paper.



- 6** Hold the lock release lever and slide the paper guides.
Slide the paper guides to the width of the loaded paper.

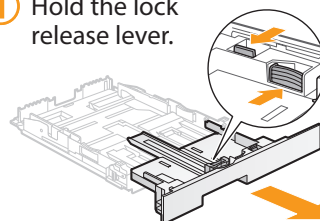


- 8** Push in the paper cassette.



- When loading Legal size paper

- 1** Hold the lock release lever.



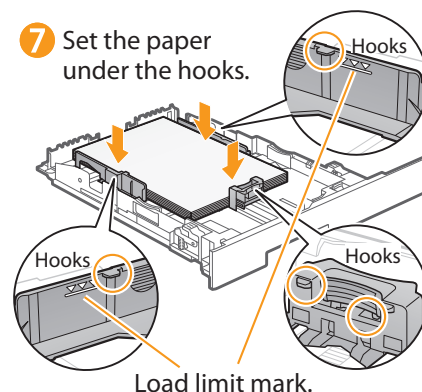
- 2** Adjust the length of the paper cassette.

- When changing the size of the paper to be loaded
Be sure to register the paper size.
→ "Setting a Paper Size and Type" (P. 10)

⊕ When using envelopes

For details on how to load media, see "Basic Operation Guide."

- 7** Set the paper under the hooks.



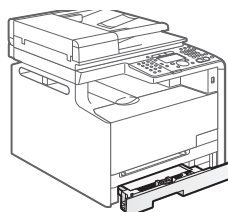
Check!

Make sure that the paper stack does not exceed the line of the load limit mark.

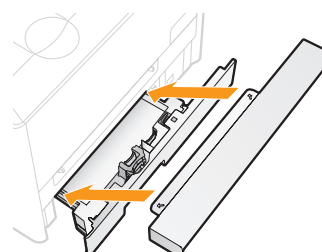


- When loading Legal size paper

When the paper cassette is inserted with it extended, the front side of the paper cassette is not flush with the front surface of the machine as shown in the figure.

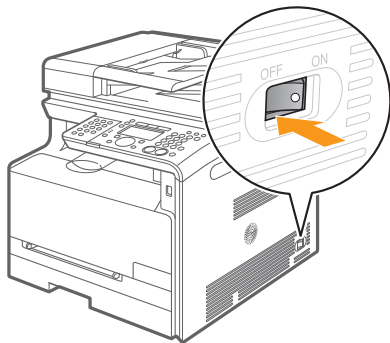


Set the Legal dust cover on the paper cassette.

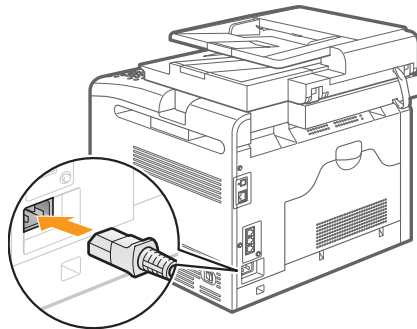


Connecting the Power Cord

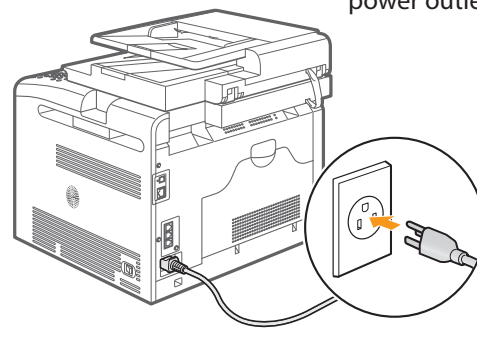
- 1 Make sure that the machine is off.



- 2 Plug the power plug into the power socket.



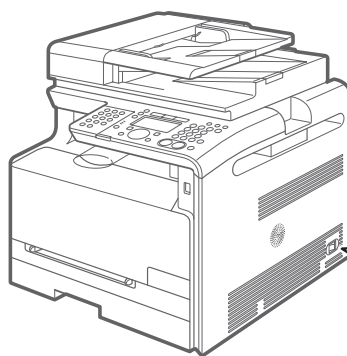
- 3 Plug the power plug into a AC power outlet.



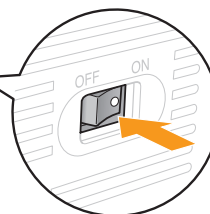
Do not connect the USB cable. Connect the USB cable when installing the software.

Turning the Power ON and Specifying the Initial Settings

1. Turn ON the power of the machine.

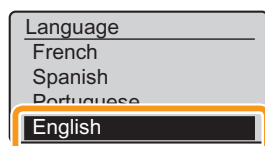


- 1 Press the power switch.

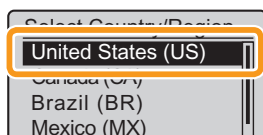


2. Specify initial settings.

- 1 Select with [▲] or [▼], and then press [OK].



- 2 Select with [▲] or [▼], and then press [OK].



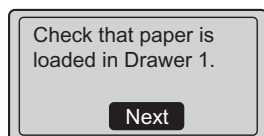
- 3 Check and press [OK].



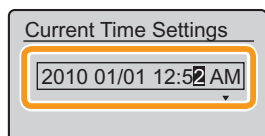
- 4 Check and press [OK].



5 Check and press [OK].



6 Use the numeric keys, and then press [OK].



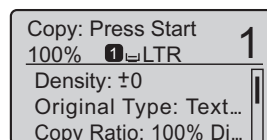
- Move the cursor with [◀] or [▶].
- Switch to <AM> or <PM> with [▲] or [▼].

7 Press [OK].



- You can perform color correction by selecting <Yes> to obtain optimum copy results or printout results. For details on the procedure, see the following "Performing Color Correction."

8 An initial screen appears, and initial setting is finished.



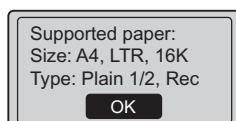
If <Open the back cover, remove the protective sheet.> appears

The packing materials inside the back cover has not been removed. Refer the procedure of "2. Remove the packing material" in P.4 to remove them.

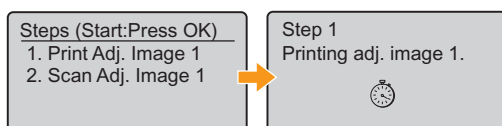
Performing Color Correction

Color correction takes approximately 255 seconds.

① Make sure that paper is loaded, and then press [OK].



② Confirm the procedure for color correction, and then press [OK].



A test chart (adjusted image 1) is printed.

Check the temperature of the installation site.

If the room temperature is low, correction may not be performed properly.

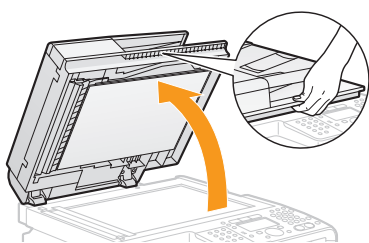
If <Adjustment failed.> appears

- Is the paper loaded correctly?
→ Load plain paper or recycled paper of A4/Letter size in the paper cassette.
- Is the test chart placed on the platen glass correctly?
→ Place the test chart with the print side face down and the black stripe toward the back of the machine.
- Has a paper jam occurred?
→ Remove the jammed paper.

If you want to perform color correction again, press [⊗] (Menu), and then select the following settings in the following order.

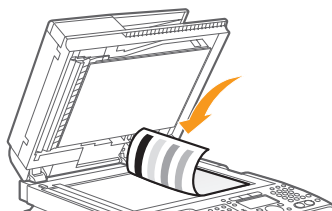
<Adjustment/Cleaning> → <Auto Gradation Adjustment> → <Copy Image Adjustment>

③ Open the feeder.

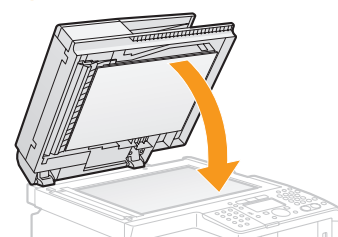


④ Place the test chart with the print side face down.

Place the paper so that the black stripe is at the back side of the machine.



⑤ Close the feeder.



⑥ Press [Color] (Start).



Place adj. image 1 on the glass with black side toward the back. Press [Color] start.

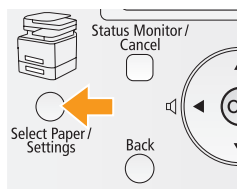
Step 2 Scanning adj. image 1.

Copy Image Adjustment

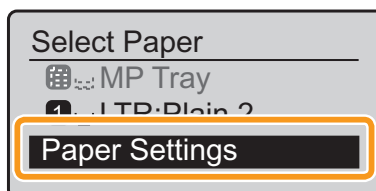
⑦ Remove the test chart (adjusted image 1) placed on the platen glass in Step ④.

Setting a Paper Size and Type

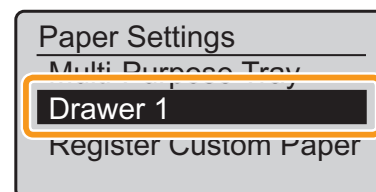
- 1 Press [] (Select Paper/Settings).



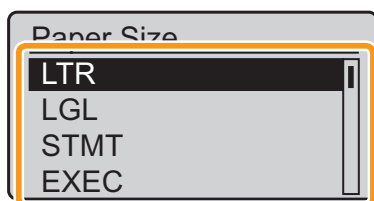
- 2 Select with [▲] or [▼], and then press [OK].



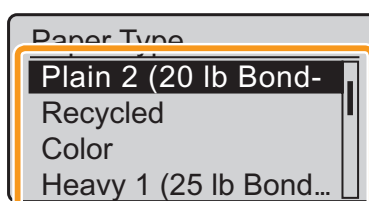
- 3 Select with [▲] or [▼], and then press [OK].



- 4 Select with [▲] or [▼], and then press [OK].



- 5 Select with [▲] or [▼], and then press [OK].



- 6 Press [] (Reset) to return to standby mode.

Specifying Initial Fax Settings and Connecting a Telephone Cable

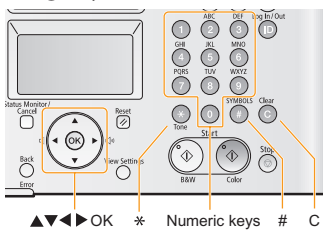
Operate the machine following the on-screen instructions and perform the following settings and connection.

- Registering the fax number and username
- Setting the fax receive mode
- Connecting a telephone line

If you are using pulse dialing, change the line type after specifying the settings.

Text Input Method

Enter information into the machine using the following keys.



Changing the entry mode

Select <Entry Mode> with [▼], and then press [OK]. You can also press [●] (Tone) to change the entry mode.

Entry mode	Available text
<A>	Alphabet (capital letters) and symbols
<a>	Alphabet (small letters) and symbols
<12>	Numbers

Moving the cursor (entering a space)

Move with [◀] or [▶].
Move the cursor to the end of text and press [▶] to enter a space.

Entering letters and symbols

Enter with the numeric keys or [●] (Symbols).

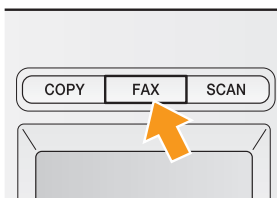
Keys used	Entry mode: <A>	Entry mode: <a>	Entry mode: <12>
1	@-_/	@-_/	1
2	ABC	abc	2
3	DEF	def	3
4	GHI	ghi	4
5	JKL	jkl	5
6	MNO	mno	6
7	PQRS	pqrs	7
8	TUV	tuv	8
9	WXYZ	wxyz	9
0	(Nonenterable text)	(Nonenterable text)	0
#	@./-!/?&\$%#()[]{}<> *+=",;: ' ^ ` \	@./-!/?&\$%#()[]{}<> *+=",;: ' ^ ` \	(Nonenterable text)

Deleting characters

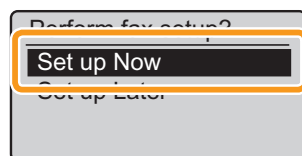
Delete with [●] (Clear).
(Pressing and holding this key deletes all characters.)

1. Register the fax number and username.

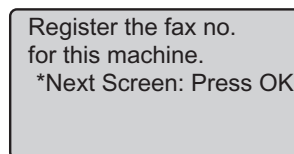
1 Press [FAX].



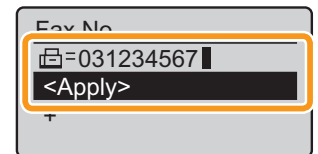
2 Select with [▲] or [▼], and then press [OK].



3 Press [OK].

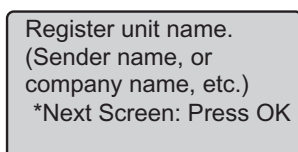


4 Enter.

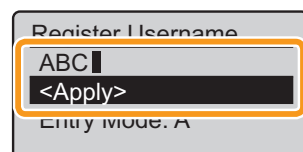


5 Select <Apply> with [▲], and then press [OK].

6 Press [OK].



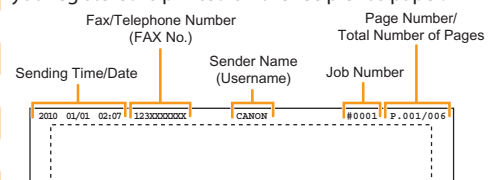
7 Enter.



8 Select <Apply> with [▲], and then press [OK].

What happens with the username

When you send a document, the sender information that you registered is printed on the recipient's paper.

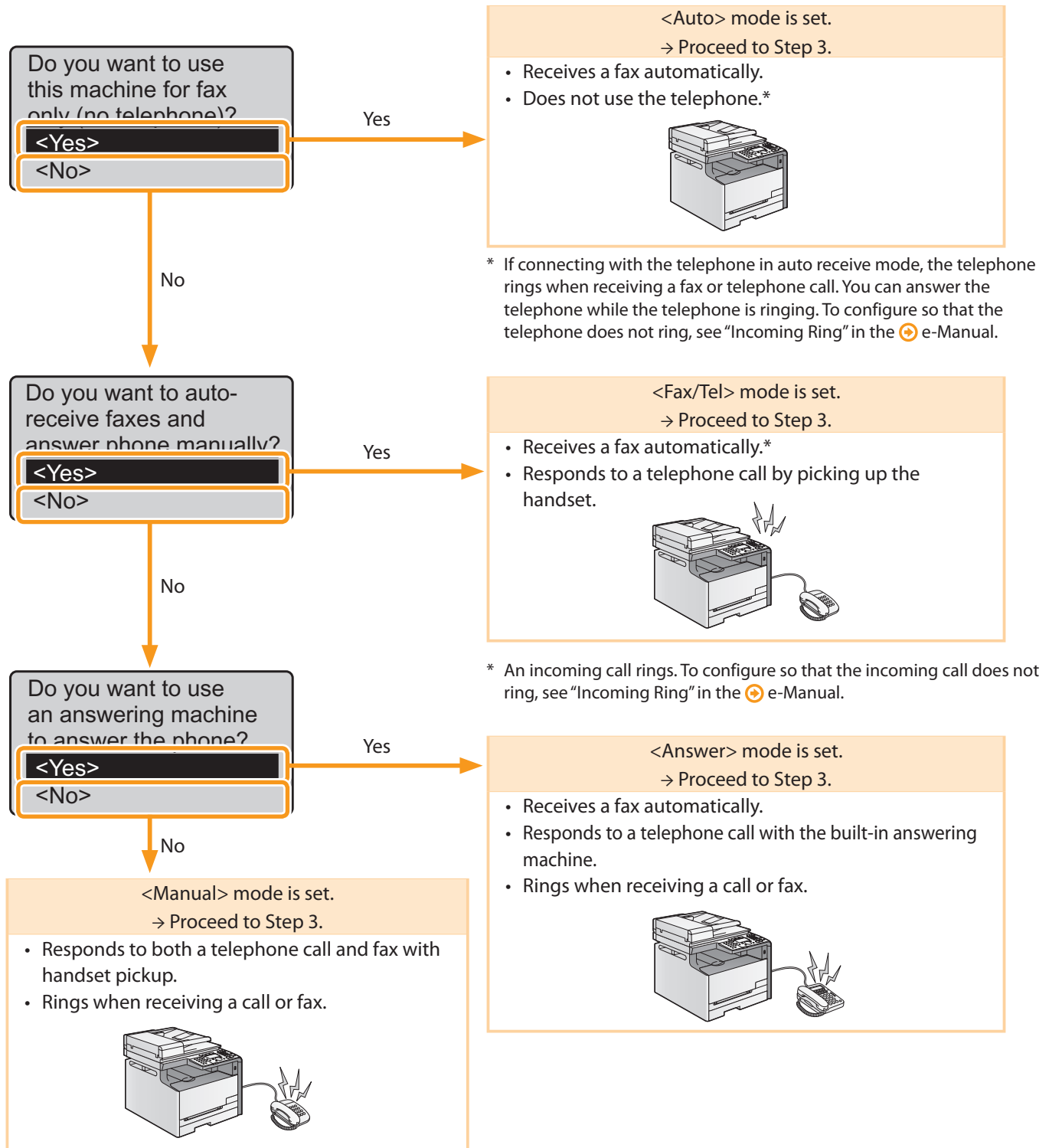


2. Set the fax receive mode.

You can specify how the machine should operate for a fax call or telephone call.

By answering the prompts that appear on the display, the machine will be set to one of the following four operation modes.

<Auto><Fax/Tel><Answer><Manual>



3. Connect a telephone line.

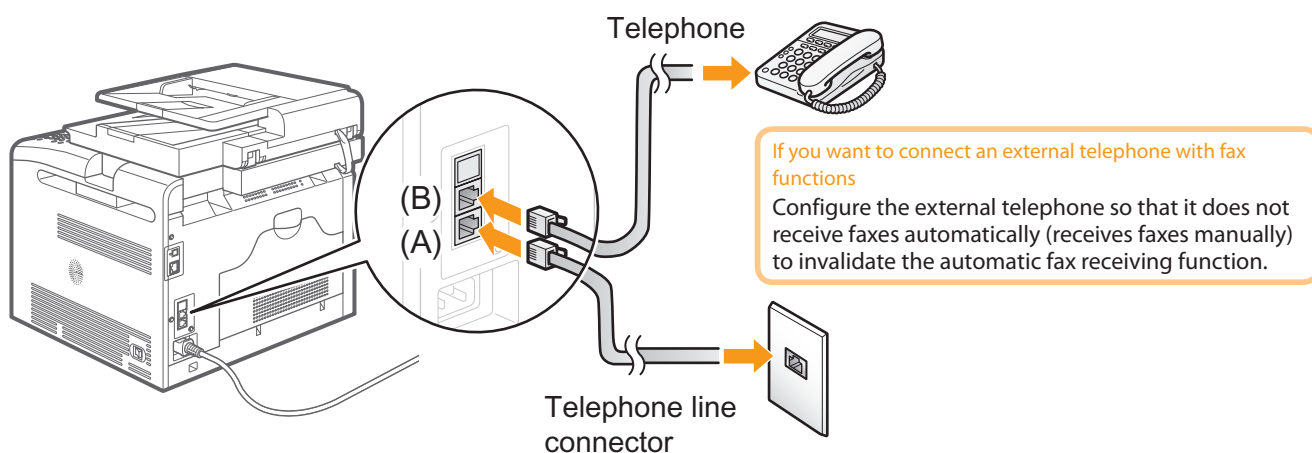
1 Press [OK].

The displayed screen varies depending on the specified receive mode.

Connect phone line.
Follow instructions
on the next screen.
Connect line to A.
*Next: Press OK

Connect phone line.
Follow instructions
on the next screen
to make connections:
1. Phone line to A

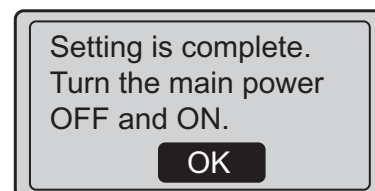
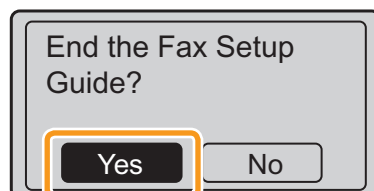
2 Connect telephone cables to the machine as needed.



3 When connecting is finished, press [OK].

4 Select with [◀], and then press [OK].

5 Press [OK].



Fax settings and connections have been completed.



6 Restart the machine to activate the settings.

Turn OFF the machine and wait for at least 10 seconds before turning it ON again.

4. Change the line type.

By default, the telephone line type on the machine is set to tone dialing. If you use tone dialing, skip the following procedure. If you use pulse dialing, follow the procedure below and change the telephone line type setting on the machine to pulse dialing.

If you do not know the type of telephone line you use, contact your local telephone company.

- 1 Press [] (Menu).
- 2 Select <Send/Receive Settings> with [▲] or [▼], and then press [OK].
- 3 Select <Fax Settings> with [▲] or [▼], and then press [OK].
- 4 Select <Basic Settings> with [▲] or [▼], and then press [OK].
- 5 Select <Select Line Type> with [▲] or [▼], and then press [OK].
- 6 Select the line type you are using with [▲] or [▼], and then press [OK].
 - <Tone>: Tone dialing (Default)
 - <Dial 10 PPS>: Pulse dialing
- 7 Press [] (Menu) to close the menu screen.

Selecting a Method for Connecting the Machine to a Computer

There are two ways to connect the machine to a computer: Network connection and USB connection. Select the connection type according to your environment or functions to be used.

- * Functions with USB connection and network connection can be used simultaneously.
- * To use the scanning function with Macintosh, you need to connect with a USB cable.

• For Network Connection

Network Connection and Configuration

The procedures for connecting to and configuring a network are the same for Windows and Macintosh.

Connect to and configure a network using the following procedure.

- * Installation methods for the software are different. After connection and configuration, see the relevant pages for the respective procedures for installation.

• For USB Connection

• For Windows

➤ Installing with USB Connection p. 18

• For Macintosh

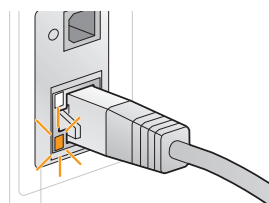
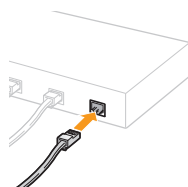
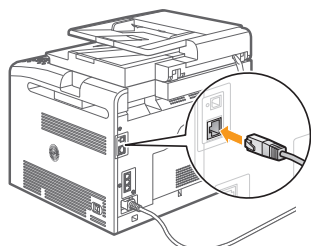
➤ Installing the Software p. 21

Network Connection and Configuration (Windows/Macintosh)

1. Connect the LAN cable.

① Connect the cable.

② Make sure that the green indicator of the LAN port is on.



About the LAN cable

- The machine does not come with a LAN cable or a hub. Have cables or a hub ready as needed.
- Use a Category 5 or higher twisted pair cable for the LAN.

If the indicator is not on

Check the following.

- Whether the machine and hub are connected using a LAN cable
- Whether the power of the machine is turned ON

2. The machine sets the IP address automatically. Wait approximately 2 minutes.

If you want to set the IP address manually, see the following.

- e-Manual "Setting IPv4 Address"
- e-Manual "Setting IPv6 Address"

About obtaining the IP address automatically (AutoIP)

<DHCP> or <Auto IP> is enabled in the default setting.

Even if you do not set the IP address manually, this machine can obtain it automatically.

- Even if you do not have a dedicated device such as a DHCP server, the IP address is obtained automatically.
- The <DHCP> setting is prioritized over <Auto IP>.

If a fixed IP address is set as the IP address of the computer, set the fixed IP address also for this machine manually.

If the IP address of the machine is changed

When the machine and computer are on the same subnet, the connection is maintained.

Installing via Network Connection

• For Windows

➤ Installing via Network Connection p. 16

• For Macintosh

➤ Installing the Software p. 21

Installing via Network Connection (For Windows)

1. Check the following points.

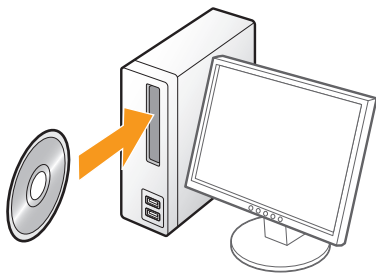
- The computer and machine are connected via the network.
- The power of the machine is turned ON.
- IP addresses are properly set up.

2. Turn on the computer, and then log on as a user with administrative privileges.

If you have already logged on, exit all applications which are running.

3. Install the MF Drivers and MF Toolbox.

1 Insert the CD-ROM.



2 Click.



[Easy Installation] performs the installation of the following software.

- Printer driver
- Scanner driver
- MF Toolbox

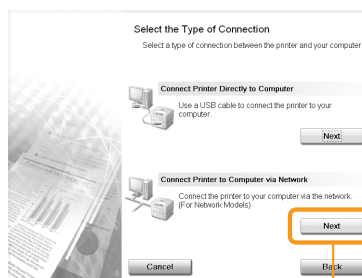
To add the following software and manual to the installation, select [Custom Installation].

- Fax driver
- Presto! PageManager
- e-Manual

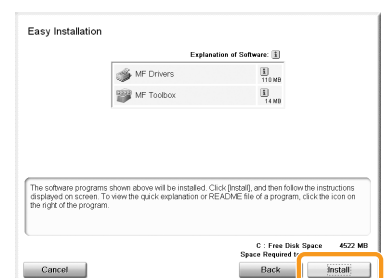
➤ e-Manual "Installing the MF Drivers and MF Toolbox"

If the top screen does not appear

- Windows 2000, XP, and Server 2003
 1. From the [Start] menu, select [Run].
 2. Enter "D:\Minst.exe", and then click [OK].
 - Windows Vista, 7, and Server 2008
 1. Enter "D:\Minst.exe" in [Start Search] or [Search programs and files] under the [Start] menu.
 2. Press the [ENTER] key on the keyboard.
- * The CD-ROM drive name is indicated as "D:" in this manual. The CD-ROM drive name may differ depending on the computer you are using.

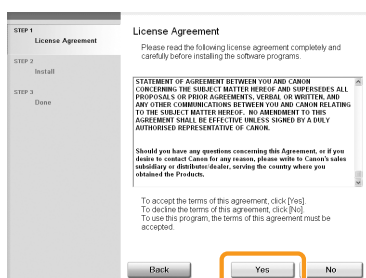


3 Click.

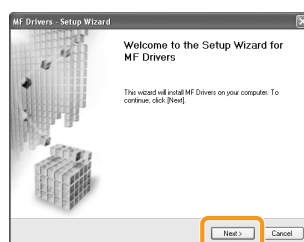


4 Click.

5 Read the contents of the License Agreement.

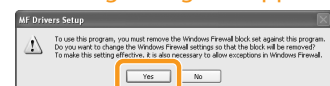


6 Click.



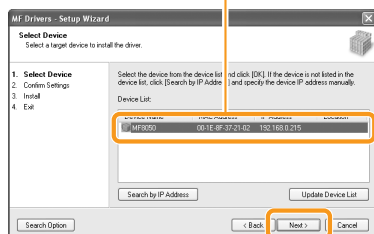
7 Click.

If the following dialog box appears



Click.

8 Select.



9 Click.

If no devices are displayed in [Device List]

Perform the following procedure.

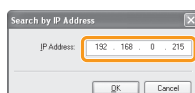
1. Check the following.
 - The computer and device are connected via the network.
 - The device is turned on.
 - The IP address is set correctly.
 - The computer and device are on the same subnet.
 - Security software has been exited.

2. Click [Update Device List].

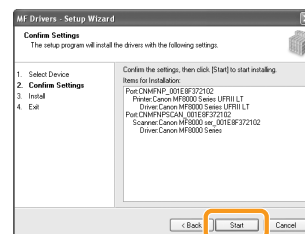
If any devices are not displayed by performing the above procedure, perform the following procedure.

1. Click [Search by IP Address].
2. Enter the IP address of the device to be installed.

➔ "Checking the IP Address" (PA-3)

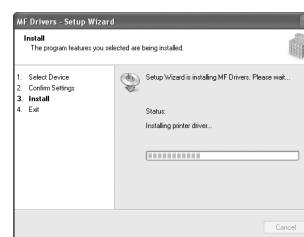


3. Click [OK].



10 Click.

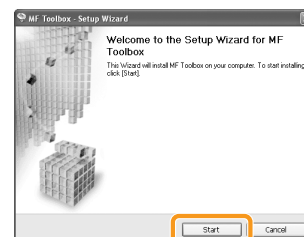
The installation starts.



11 Click.

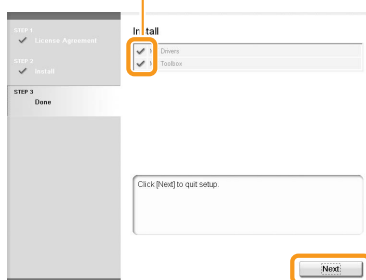
Next, installation of MF Toolbox starts.

* In Windows 2000 Server/ Server 2003/2008, MF Toolbox is not installed. Proceed to Step 14.



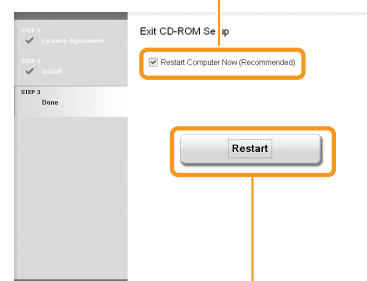
12 Click.

14 Make sure that [✓] is added.



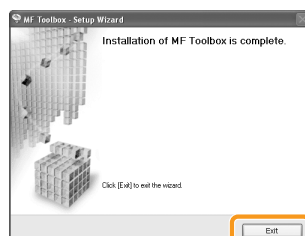
15 Click.

16 Select the check box.



17 Click.

The CD-ROM may be removed once this screen appears.



13 Click.

➔ Checking the Installation Results

P. 20

Installing with USB Connection (For Windows)

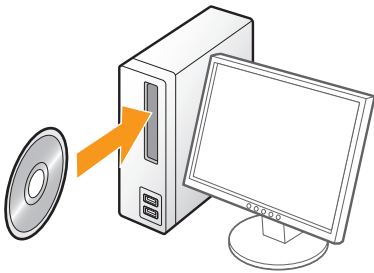
- Connect the USB cable after installing the software.
- Make sure that the power of the machine is turned ON when connecting the USB cable.

1. Turn on the computer, and then log on as a user with administrative privileges.

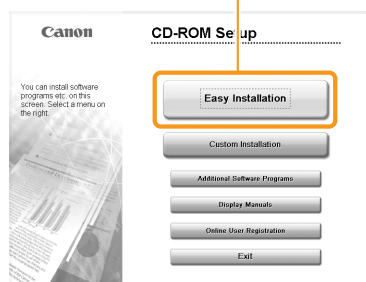
If you have already logged on, exit all applications which are running.

2. Install the MF Drivers and MF Toolbox.

1 Insert the CD-ROM.



2 Click.



[Easy Installation] performs the installation of the following software.

- Printer driver
- Fax driver
- Scanner driver
- MF Toolbox

To add the following software and manual to the installation, select [Custom Installation].

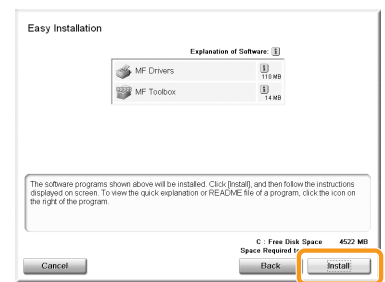
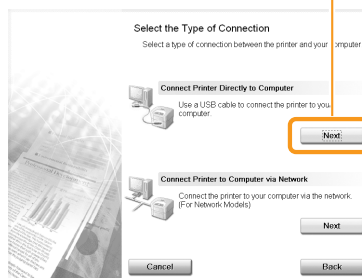
- Presto! PageManager
- e-Manual

➔ e-Manual "Installing the MF Drivers and MF Toolbox"

If the top screen does not appear

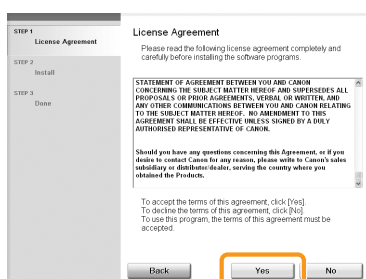
- Windows 2000, XP, and Server 2003
 1. From the [Start] menu, select [Run].
 2. Enter "D:\Minst.exe", and then click [OK].
 - Windows Vista, 7, and Server 2008
 1. Enter "D:\Minst.exe" in [Start Search] or [Search programs and files] under the [Start] menu.
 2. Press the [ENTER] key on the keyboard.
- * The CD-ROM drive name is indicated as "D:" in this manual. The CD-ROM drive name may differ depending on the computer you are using.

3 Click.

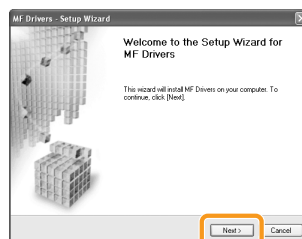


4 Click.

5 Read the contents of the License Agreement.

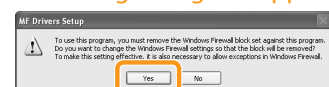


6 Click.



7 Click.

If the following dialog box appears



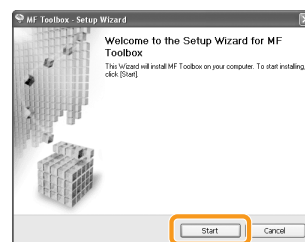
Click.



8 Click.

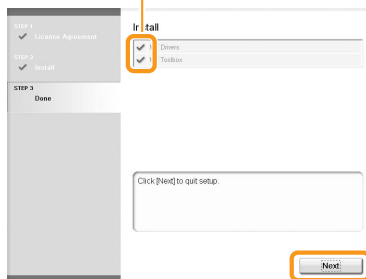
Next, installation of MF Toolbox starts.

* In Windows 2000 Server/Server 2003/2008, MF Toolbox is not installed. Proceed to Step 11.



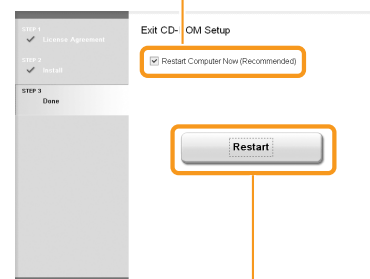
9 Click.

11 Make sure that [☒] is added.



12 Click.

13 Select the check box.



14 Click.

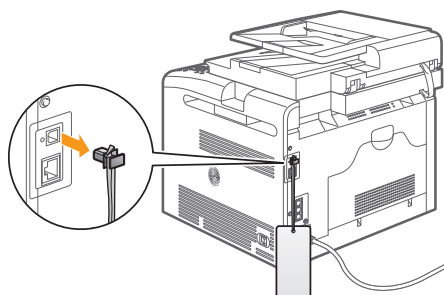


10 Click.

The CD-ROM may be removed once this screen appears.

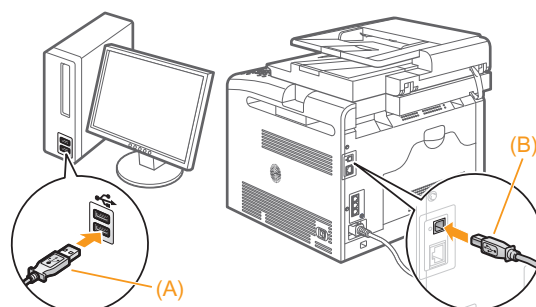
3. Connect the USB cable.

1 Remove cap plug.
Remove by pulling the string.



2 Connect the cable.

- Flat end (A):
Connect to the USB port on the computer.
- Square end (B):
Connect to the USB port on the machine.






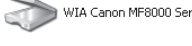


When a dialog box is displayed
Follow the on-screen instructions and complete the installation.

☉ Checking the Installation Results

P. 20

Checking the Installation Results (For Windows)

Make sure that the MF Drivers and MF Toolbox are installed correctly.
Make sure that the icons for the installed software are added as follows.

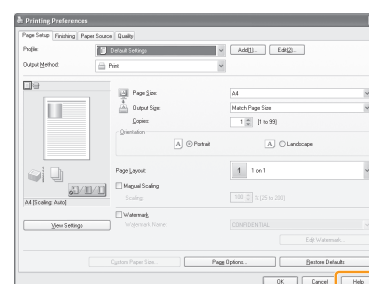
Software	Location	Icon
Printer driver	Printer folder	
Fax driver	<ul style="list-style-type: none"> • Windows 2000 From the [Start] menu, select [Settings] → [Printers]. • Windows XP Professional/Server 2003 From the [Start] menu, select [Printers and Faxes]. • Windows XP Home Edition From the [Start] menu, select [Control Panel], click [Printers and Other Hardware] → [Printers and Faxes]. • Windows Vista From the [Start] menu, select [Control Panel], and then click [Printers]. • Windows 7 From the [Start] menu, select [Devices and Printers]. • Windows Server 2008 From the [Start] menu, select [Control Panel], and then double-click [Printers]. 	
Scanner driver	[Scanners and Cameras] or [Scanners and Cameras Properties] folder <ul style="list-style-type: none"> • Windows 2000 From [Start] menu → select [Settings] → [Control Panel] → double-click [Scanners and Cameras]. • Windows XP From the [Start] menu, select [Control Panel], and then click [Printers and Other Hardware] → [Scanners and Cameras]. • Windows Vista From the [Start] menu, select [Control Panel], and then click [Hardware and Sound] → [Scanners and Cameras]. • Windows 7 1. Enter "scanner" in [Search programs and files] under the [Start] menu. 2. Click [View scanners and cameras]. 	 
MF Toolbox	Desktop	
Network Scan Utility	Taskbar	

How to Use the Online Help

In the Online Help, all the functions of the driver software and information about options are included. If you want to view descriptions of the functions and settings immediately when using the driver software, make use of the Online Help.

How to display the Help screen

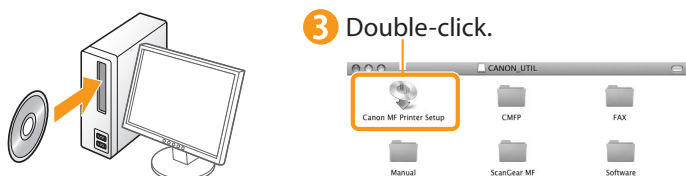
- (1) Select [File] → [Print] from the menu bar in the application.
- (2) Select the printer in [Select Printer] or [Name] in the [Print] dialog box.
- (3) Click [Preferences] or [Properties].
- (4) Click [Help] in the [Properties] dialog box.



Installing the Software (For Macintosh)

- The scanning function can be used only with a USB connection. (It cannot be used with a network connection.)
- The installation screen varies depending on the version of Mac OS X.

- 1 Insert the CD-ROM. 2 Double-click the CD-ROM icon.



- 3 Double-click.

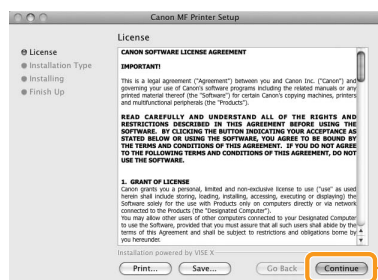
- 4 Enter.



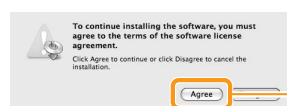
Depending on the system environment, the [Authenticate] dialog box may not be displayed. In this case, skip to step 6.

- 5 Click.

- 6 Read the contents of the License Agreement.

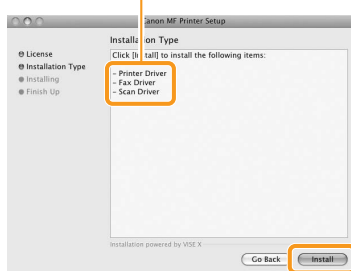


- 7 Click.



- 8 Click.

- 9 Confirm.



- 10 Click.

If the Following Message Appears

Reconnect the scanner when the device is connected, and then click [OK].

To use the scanner function, you need to connect the device so that the driver can recognize it. If the device is already connected to your computer, disconnect the cable from the device, connect it again, and then click [OK].

- Click.



- 11 Click.

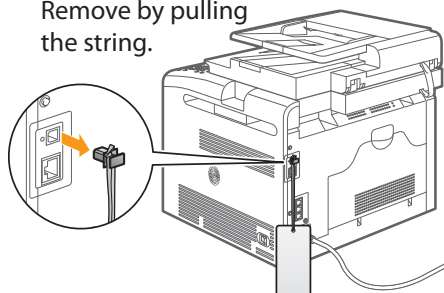
* Depending on the version of Mac OS X you are using or the system environment, you may need to restart your computer after the installation.

Connecting a USB Cable (For Macintosh)

- Perform the following procedure only when connecting this machine to Macintosh with a USB cable.

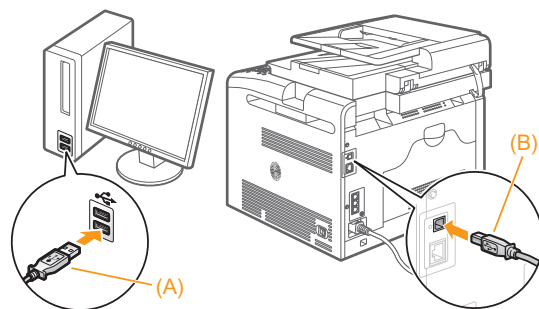
- 1 Remove the cap plug.

Remove by pulling the string.



- 2 Connect the cable.

- Flat end (A): Connect to the USB port on the computer.
- Square end (B): Connect to the USB port on the machine.



Registering the Printer and Fax (For Macintosh)

To print or send faxes from a Macintosh, you need to register this machine in the Macintosh.
The registration method varies depending on the connection type. Select a method according to your environment.

* The scanning function does not need to be registered.

• When Using Auto IP (Bonjour)

➔ Bonjour Connection P. 22

• When Using a TCP/IP Network

➔ TCP/IP Connection P. 23

• When Connecting with a USB Cable

➔ USB Connection P. 24

Bonjour Connection (For Macintosh)

Register the printer and fax respectively following the procedure from 1 to 10.

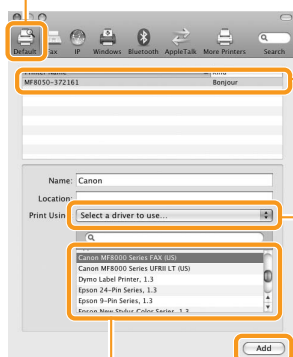
1 Open [System Preferences].

2 Click [Print & Fax].

3 Click the [+] icon.

If you are using Mac OS X 10.4.x, click [Print] in the [Print & Fax] dialog box to display the [Print] pane → click the [+] icon.

4 Select.



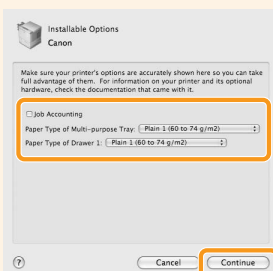
5 Select.
Select a printer name for which [Bonjour] is displayed in the [Kind] or [Connection] column.

6 Select.
If you are using Mac OS X 10.4.x, select [Canon] from [Print Using].

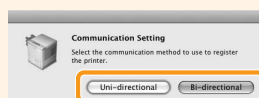
7 Select.

8 Click.

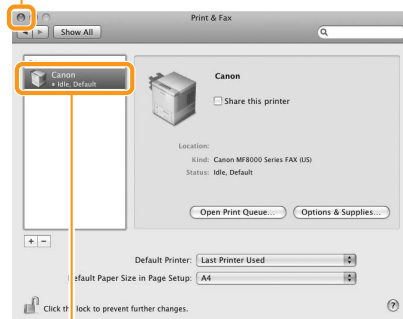
If the following screen appears, specify the optional settings, and then click [Continue].



If the following screen appears, select a method for fax connection.



10 Click.



9 Check that this machine is added to the [Print & Fax] dialog box.

➔ Checking the Installation Results
P. 24

TCP/IP Connection (For Macintosh)

Register the printer and fax respectively following the procedure from 1 to 11.

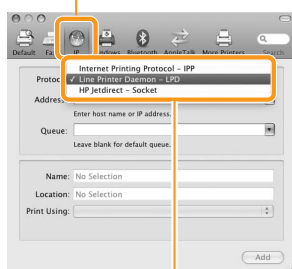
1 Open [System Preferences].

2 Click [Print & Fax].

3 Click the [+] icon.

If you are using Mac OS X 10.4.x, click [Print] in the [Print & Fax] dialog box to display the [Print] pane → click the [+] icon.

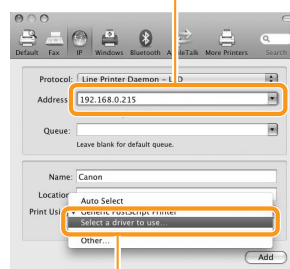
4 Select.



When connecting with IPv6
Perform either of the following procedures.

- When registering the printer
 1. Click [More Printers].
 2. Select [Canon IPv6 (CUPS CMFP)].
- When registering the fax
 1. Click [More Printers].
 2. Select [Canon IPv6 (CUPS Fax)].

6 Enter the IP address of this machine.



When connecting with IPv6

Enter a link-local unicast address or global unicast address in [Address]. If you entered a link-local unicast address, specify [Network Interface].

* You can enter an abbreviated unicast address. Also, if you enter the global unicast address, you can specify it using a DNS name (only when the DNS server that supports IPv6 is configured for the network settings of your computer in advance).

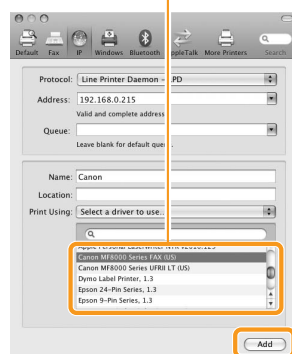
5 Select.

* [IPP (Internet Printing Protocol)] is not supported.

7 Select.

If you are using Mac OS X 10.4.x, select [Canon] from [Print Using].

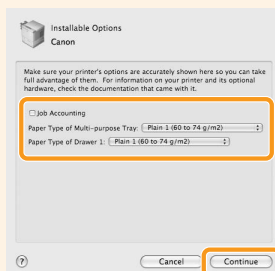
8 Select a driver that supports this machine.



If you are using a fax which is connected with IPv6 and if you want to connect the fax with unidirectional communication

Select the fax driver from the list, and then select the [Uni-directional Printing] check box.

If the following screen appears, specify the optional settings, and then click [Continue].

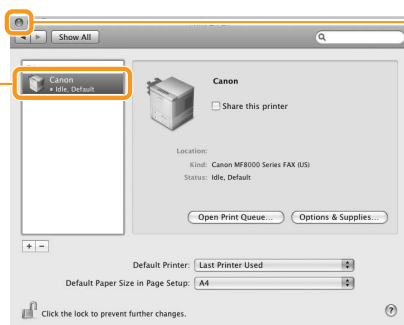


If the following screen appears, select a method for fax connection.



9 Click.

10 Check that this machine is added to the [Print & Fax] dialog box.



11 Click.

☞ Checking the Installation Results

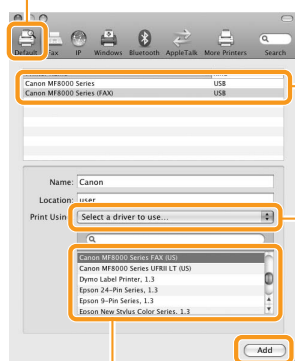
P. 24

USB Connection (For Macintosh)

Register the printer and fax respectively following the procedure from ① to ⑩.

- ① Open [System Preferences].
- ② Click [Print & Fax].
- ③ Click the [+] icon.
If you are using Mac OS X 10.4.x, click [Print] in the [Print & Fax] dialog box to display the [Print] pane → click the [+] icon.

- ④ Select.

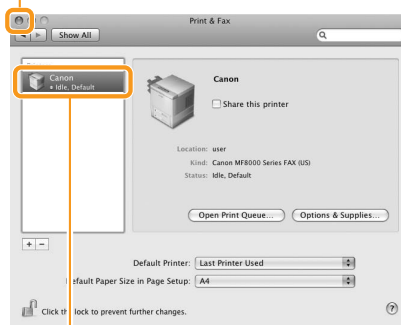


- ⑤ Select.
Select a printer name for which [USB] is displayed in the [Kind] or [Connection] column.

- ⑥ Select.
If you are using Mac OS X 10.4.x, select [Canon] from [Print Using].

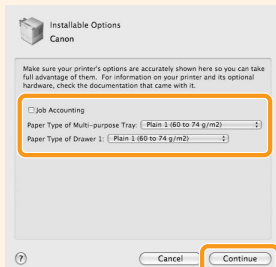
- ⑦ Select.
- ⑧ Click.

- ⑩ Click.



- ⑨ Check that this machine is added to the [Print & Fax] dialog box.

If the following screen appears, specify the optional settings, and then click [Continue].



➡ Checking the Installation Results P. 24

Checking the Installation Results (For Macintosh)

With this section, check that the scanner driver is installed correctly.

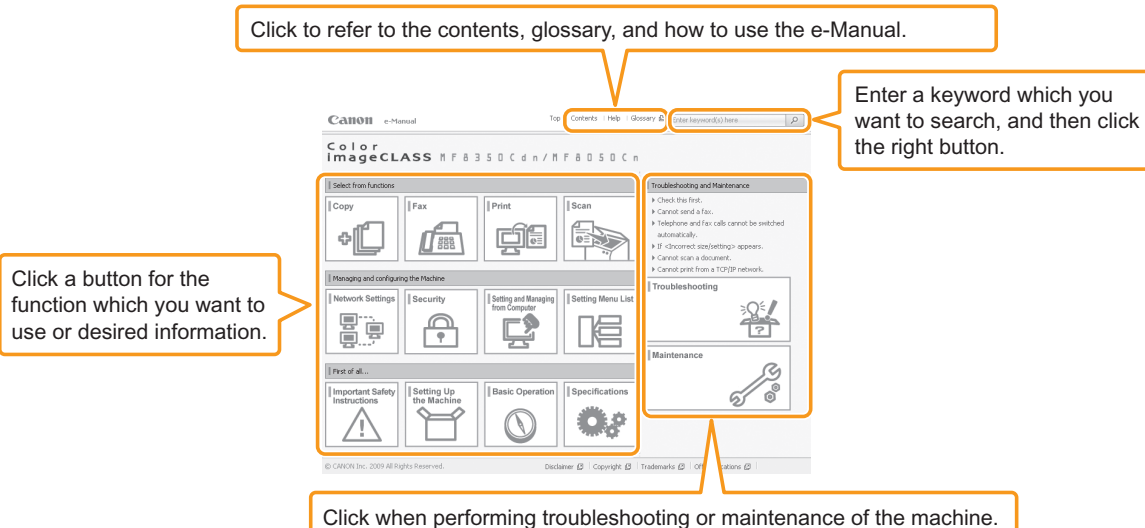
- You do not need to check the installation results of the printer driver and fax driver. You can use the drivers when the registration of this machine is completed.

- ① The computer is connected with the scanner.
- ② Open the Image Capture application of your Mac OS X.
- ③ When [Canon MF8000 Series] appears in the following locations, the installation of the driver was successful.
 - Mac OS X 10.4.x/10.5.x
The pull-down menu displayed by clicking [Devices] in the menu bar.
 - Mac OS X 10.6.x
The left list in the window

Using the e-Manual

Page configuration of the e-Manual

When you start the e-Manual, the screen below is displayed.



For Windows

Installing the e-Manual on your computer

- 1 Insert the User Software CD-ROM in your computer.
- 2 Click [Custom Installation].
If CD-ROM Setup does not appear, see "If the top screen does not appear."
- 3 Click [Next].
- 4 Select only the [Manuals] check box.
- 5 Click [Install].
- 6 Click [Yes].
- 7 Click [Next].
- 8 When the installation finished, click [Exit].
- 9 To display the e-Manual, double-click the short cut icon [MF8000 Series e-Manual] on the desktop.

* ActiveX may block pop-ups in the background. If the e-Manual is not displayed properly, look for an information bar at the top of the page and click the information bar.

If the top screen does not appear

- Windows 2000, XP, and Server 2003
 1. From the [Start] menu, select [Run].
 2. Enter "D:\Minst.exe", and then click [OK].
 - Windows Vista, 7, and Server 2008
 1. Enter "D:\Minst.exe" in [Start Search] or [Search programs and files] under the [Start] menu.
 2. Press the [ENTER] key on the keyboard.
- * The CD-ROM drive name is indicated as "D:" in this manual. The CD-ROM drive name may differ depending on the computer you are using.

Displaying the e-Manual directly from the CD-ROM

- 1 Insert the User Software CD-ROM in your computer.
- 2 Click [Display Manuals].
- 3 Click [HTML] for [e-Manual].

* Depending on the operating system you are using, a security protection message is displayed. Allow the contents to be displayed.

For Macintosh

Installing the e-Manual on your computer

- 1 Insert the User Software CD-ROM in your computer.
- 2 Open the [Manual] → [us_eng] folders.
- 3 Drag and drop the [Source] folder into a location where you want to save it.
- 4 When displaying the installed e-Manual, double-click [index.html] in the saved [Source] folder.

Displaying the e-Manual directly from the CD-ROM

- 1 Insert the User Software CD-ROM in your computer.
- 2 Open the [Manual] → [us_eng] → [Source] folders.
- 3 Double-click [index.html].

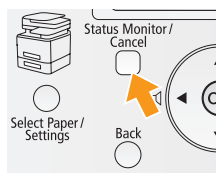
For more details on the fax, print, and scan functions

See the following Driver Guide.

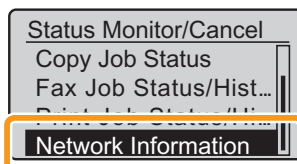
- Fax: User Software CD-ROM → [FAX] → [us_eng] → [Documents] → [GUIDE-FAX-US.pdf]
- Print: User Software CD-ROM → [CMFP] → [us_eng] → [Documents] → [GUIDE-CMFP-US.pdf]
- Scan: User Software CD-ROM → [ScanGear MF] → [us_eng] → [Documents] → [GUIDE-SCAN-US.pdf]

Checking the IP Address

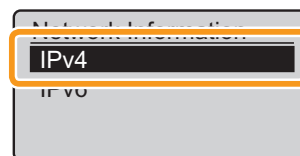
- 1 Press [] (Status Monitor/Cancel).



- 2 Select with [▲] or [▼], and then press [OK].



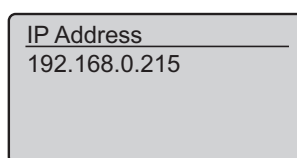
- 3 Press [OK].



- 4 Select with [▲] or [▼], and then press [OK].



- 5 Check the IP address.



- 6 Press [] (Status Monitor/Cancel) to close the screen.

If the IP address displayed on the screen is between "169.254.1.0 and 169.254.254.255"

This IP address is the one assigned by the AutoIP function. If an IP address other than link-local addresses is set for the computer, set an IP address in the same subnet as the computer (other than link-local addresses) also for this machine manually. This enables the installer to search for this machine.

- ➔ e-Manual "Setting IPv4 Address"
- ➔ e-Manual "Setting IPv6 Address"

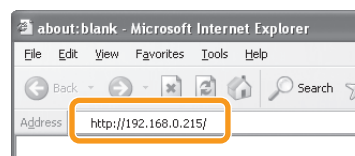
Check the network operation.

- 1 Start the web browser of a computer which is connected to a network.

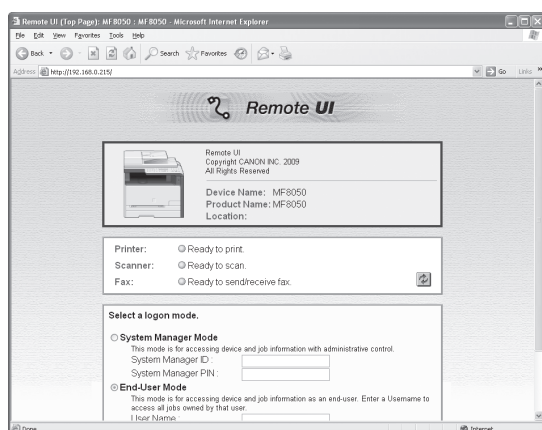
- 2 Enter "http://<IP address of the machine>/" in the address field, and then press the [ENTER] key on your keyboard.

The < IP address of the machine > is the address checked in Step 5.

Input Example: <http://192.168.0.215/>



- 3 Check that the screen of the Remote UI is displayed.



When the machine is connected to a switching hub

You may not be able to connect the machine to a network even though your network settings are appropriate. Delaying the machine's network startup time may solve the problem.

- ➔ e-Manual "Specifying the Wait Time until the Machine Connects to a Network"

When the Remote UI is not displayed

Check the following.

- Whether the computer and hub are connected using a LAN cable
- Whether <Remote UI On/Off> is set to <On>
- ➔ e-Manual "System Settings"

If You Want to Uninstall the Installed Software

When you no longer need the printer driver, fax driver, scanner driver, or MF Toolbox, you can uninstall them using the following procedure.

1. Check the following points.

- You must be the user with administrative privileges
- You have the installation software (if you want to re-install the drivers)
- No applications are running on your computer

2. Delete the software.

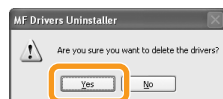
For Windows

For the printer/fax/scanner driver

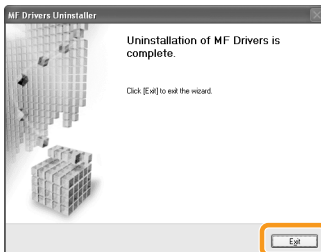
- 1 From the [Start] menu, click [(All) Programs] → [Canon] → [MF8000] → [Uninstall Drivers].



2 Click.



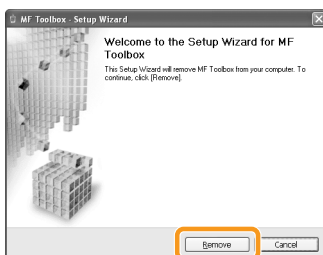
3 Click.



4 Click.

For MF Toolbox

- 1 From the [Start] menu, click [(All) Programs] → [Canon] → [MF Toolbox 4.9] → [Toolbox Uninstall].



2 Click.



3 Click.

For Macintosh

- 1 Insert the CD-ROM.
- 2 Double-click the CD-ROM icon.
- 3 Open the following folders.
 - When uninstalling the printer driver: [CMFP] folder
 - When uninstalling the fax driver: [FAX] folder
 - When uninstalling ScanGear MF/MF Toolbox: [ScanGear MF] folder

- 4 Open the [us_eng] folder.

- 5 Double-click the [Installer] icon.

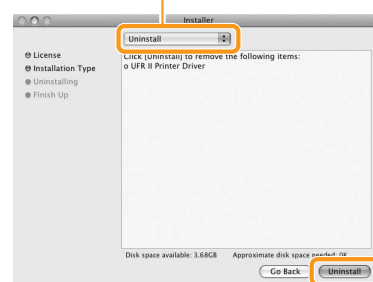
- 6 Enter the administrator's name and password → click [OK].

Depending on the system environment, the [Authenticate] dialog box may not be displayed. In this case, skip to step 7.

- 7 Read the software license agreement carefully → click [Continue].

- 8 If you agree to the terms of the software agreement, click [Agree].

- 9 Select.



10 Click.

- 11 Click [Quit].

Contacting the Service Center

When you have a problem with your machine and you cannot solve it even if you refer to the manuals or online help, please contact our Canon Authorized Service Facilities or the Canon Customer Care Center at 1-800-OK-CANON between the hours of 8:00 A.M. to 8:00 P.M. EST for U.S.A. and 9:00 A.M. to 8:00 P.M. EST for Canada Monday through Friday. Canadian customer support is available on-line at www.canon.ca or by calling 1-800-OK-CANON Monday through Friday from 9:00 A.M. to 8:00 P.M. EST

Disclaimers

The information in this document is subject to change without notice.

CANON INC. MAKES NO WARRANTY OF ANY KIND WITH REGARD TO THIS MATERIAL, EITHER EXPRESS OR IMPLIED, EXCEPT AS PROVIDED HEREIN, INCLUDING WITHOUT LIMITATION, THEREOF, WARRANTIES AS TO MARKETABILITY, MERCHANTABILITY, FITNESS FOR A PARTICULAR PURPOSE OF USE OR NON-INFRINGEMENT. CANON INC. SHALL NOT BE LIABLE FOR ANY DIRECT, INCIDENTAL, OR CONSEQUENTIAL DAMAGES OF ANY NATURE, OR LOSSES OR EXPENSES RESULTING FROM THE USE OF THIS MATERIAL.

Copyright

© 2011 by Canon Inc. All rights reserved.

No part of this publication may be reproduced, transmitted, transcribed, stored in a retrieval system, or translated into any language or computer language in any form or by any means, electronic, mechanical, magnetic, optical, chemical, manual, or otherwise, without the prior written permission of Canon Inc.

UFST: Copyright © (2009) Monotype Image, Inc.

Trademarks

Canon, the Canon logo, and Color imageCLASS are registered trademarks of Canon Inc. in the United States and may also be trademarks or registered trademarks in other countries.

Microsoft, Windows and Windows Vista are either trademarks or registered trademarks of Microsoft Corporation in the United States and/or other countries.

All other product and brand names are registered trademarks, trademarks or service marks of their respective owners.

**CANON INC.**

30-2, Shimomaruko 3-chome, Ohta-ku, Tokyo 146-8501, Japan

CANON MARKETING JAPAN INC.

16-6, Konan 2-chome, Minato-ku, Tokyo 108-8011, Japan

CANON U.S.A., INC.

One Canon Plaza, Lake Success, NY 11042, U.S.A.

CANON EUROPA N.V.

Bovenkerkerweg, 59-61, 1185 XB Amstelveen, The Netherlands

CANON CHINA CO. LTD.

15F Jinbao Building No.89, Jinbao Street, Dongcheng District, Beijing 100005, PRC

CANON SINGAPORE PTE LTD

1 HarbourFront Avenue, #04-01 Keppel Bay Tower, Singapore 098632

CANON AUSTRALIA PTY LTD

1 Thomas Holt Drive, North Ryde, Sydney NSW 2113, Australia

CANON GLOBAL WORLDWIDE SITES

<http://www.canon.com/>

