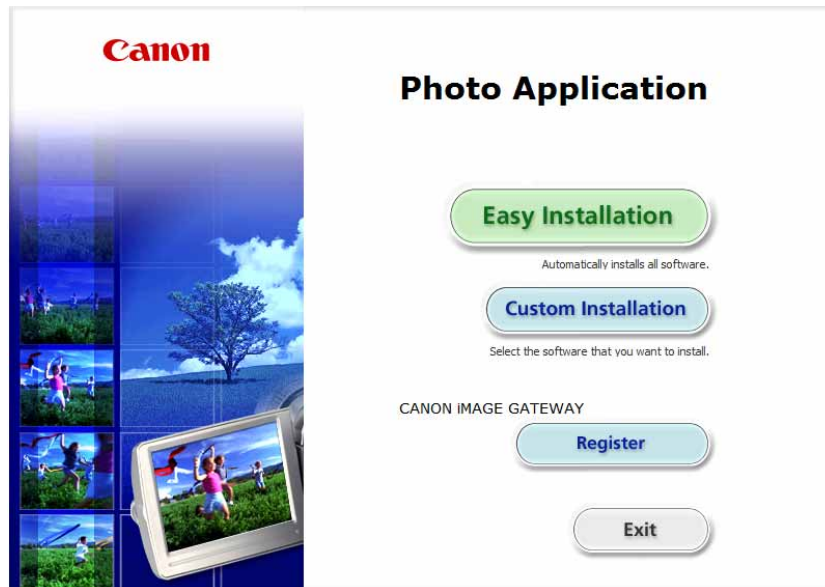




Photo Application Windows

Version 34

Instruction Manual



English

Contents

| | |
|---|-----------|
| Read This First | 4 |
| Checking Supplied Accessories | 4 |
| System Requirements | 5 |
| What is Photo Application? | 6 |
| Windows | 7 |
| CameraWindow | 7 |
| [Import Images from Camera] Window | 7 |
| [Organize Images on Camera] Window | 8 |
| [Import Images from Camera] Window | 9 |
| [Organize Images on Camera] Window | 10 |
| Main Window | 11 |
| [Image Viewer] Window | 15 |
| [Red Eye Correction] Window | 16 |
| [Auto Adjustment] Window | 17 |
| [Color/Brightness Adjustment] Window | 17 |
| [Sharpness] Window | 18 |
| [Trim Image] Window | 18 |
| [Insert Text] Window | 19 |
| Installing Photo Application..... | 20 |
| Before Downloading Still Images | 25 |
| Connecting the Camcorder to a Computer | 25 |
| Settings on the Camcorder | 25 |
| Connecting the Camcorder | 25 |
| Downloading Still Images..... | 27 |
| Starting CameraWindow | 28 |
| Downloading Still Images to the Computer..... | 29 |
| Downloading Untransferred Images | 29 |
| Downloading Selected Images | 30 |
| Downloading All the Images on the Camcorder | 32 |
| Using a Card Reader/Writer | 33 |
| Auto-Downloading | 34 |
| Auto-Downloading Settings | 34 |
| Downloading the Selected Still Images from ZoomBrowser EX | 36 |
| Printing Still Images..... | 37 |
| [Photo Print] | 37 |
| [Index Print] | 39 |
| Organizing Images | 41 |
| Applying Star Ratings and Keywords..... | 41 |
| Classifying the Images..... | 42 |
| Renaming Multiple Files | 44 |
| Searching for Images..... | 46 |
| Exporting Images | 49 |
| Changing the File Type and Saving..... | 49 |
| Saving on CD-R/RW Discs | 53 |
| Uploading Still Images to the Camcorder | 56 |
| Deleting Still Images on the Camcorder | 57 |
| Organizing Images on the Camcorder | 57 |
| Using Various Functions | 58 |
| Attaching Still Images to E-mail Messages..... | 58 |

| | |
|--|-----------|
| Running a Slide Show | 60 |
| Adding Sound to a Still Image..... | 62 |
| Reviewing and Changing the Owner Name of the Camcorder | 63 |
| Uninstalling the Software | 64 |
| Uninstalling ZoomBrowser EX | 64 |
| Troubleshooting | 65 |

Read This First

■ Disclaimer

- While every effort has been made to ensure that the information contained in this guide is accurate and complete, no liability can be accepted for any errors or omissions. Canon reserves the right to change the specifications of the hardware and software described herein at any time without prior notice.
- No part of this guide may be reproduced, transmitted, transcribed, stored in a retrieval system, or translated into any language in any form, by any means, without the prior written permission of Canon.
- Canon makes no warranties for damages resulting from corrupted or lost data due to mistaken operation or malfunction of the camcorder, the software, memory cards (SD, SDHC and SDXC), personal computers, or peripheral devices, or due to use of a memory card not initialized by a Canon camcorder.

■ Trademark Acknowledgments

- Microsoft, Windows, Windows Media and Windows Vista are trademarks or registered trademarks of Microsoft Corporation in the United States and/or other countries.
- SD, SDHC and SDXC logos are trademarks of SD-3C, LLC.
- Other names and products not mentioned above may be registered trademarks or trademarks of their respective companies.

© Canon Inc. 2010 All rights reserved.

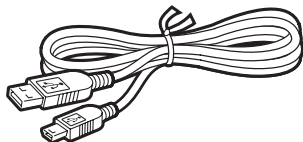
■ Safety Precautions

Do not play the supplied CD-ROM(s) in any CD player that does not support data CD-ROMs. Playing the CD-ROM(s) in an audio CD player (music player) could damage the speakers. It is also possible to suffer from hearing loss from listening with headphones to the loud sounds of a CD-ROM played on a music CD player.

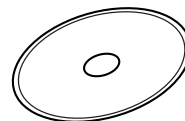
Checking Supplied Accessories

Use the following accessories to download recorded still images from the camcorder to your computer.

- Supplied USB cable
The cable supplied with your camcorder may be different from the one described in this manual.



- **HFR10** / **HFR11** / **HFR100** / **HFM30** / **HFM31** / **HFM32** / **HFM300** Instruction Manual/Photo Applications Ver. 34/Music Data Disc
- **HFS20** / **HFS21** / **HFS200** Photo Applications Ver. 34/Music Data Disc



The explanations in this manual use mainly Windows 7 screen shots. The steps and windows may vary depending on your computer and the version of software.

System Requirements

Install the software on a computer meeting the following minimum requirements.

| | |
|------------------------------|---|
| OS: | Windows 7 Windows Vista (including Service Pack 1 or 2) Windows XP (Service Pack 2 or 3) * Proper operation is not guaranteed on an OS that has been upgraded from a previous version. |
| Computer Model: | Computers that come with above OS preinstalled and have built-in USB ports. |
| CPU: | Pentium 1.3 GHz or better |
| RAM: | Windows 7 64-bit: 2 GB or more Windows 7 32-bit / Windows Vista: 1 GB or more Windows XP: 512 MB or more |
| Interface: | USB |
| Free Hard Disk Space: | <ul style="list-style-type: none">• Canon Utilities- ZoomBrowser EX: 200 MB* or more |
| Display: | 1024 × 768 pixels/High Color (16 bit) or better |

* When using Windows XP, you must install Microsoft .NET Framework 2.0 or later (up to 500 MB). Depending on your operating environment, installation times may be longer.



- Proper operation is not guaranteed on any particular system, even if it meets the requirements outlined above.
- A CD-ROM drive is required to install the software.

In this Instruction Manual, product names are abbreviated as follows:

| | |
|--|---------------|
| Microsoft Windows 7: | Windows 7 |
| Microsoft Windows Vista (including Service Pack 1 or 2): | Windows Vista |
| Microsoft Windows XP (Service Pack 2 or 3): | Windows XP |

What is Photo Application?

Photo Application allows you to download still images you recorded with the camcorder to a computer and manage, print, and edit them.

■ ZoomBrowser EX

- Viewing still images as thumbnails
- Managing by shooting date folders with still images
- Categorizing, organizing, and searching large volumes of still images
- Printing still images
- Editing still images
- Changing the data for still images and save them as new files
- Attaching still images to e-mail
- Viewing still images in a slide show
- Adding sound to a still image

■ CameraWindow

- Downloading still images to your computer
- Viewing still images saved on the camcorder and deleting them

This instruction manual explains how to install the software, what you can do with the main features and how to operate them. For more detailed operational instructions, refer to the Help menu of each software program.



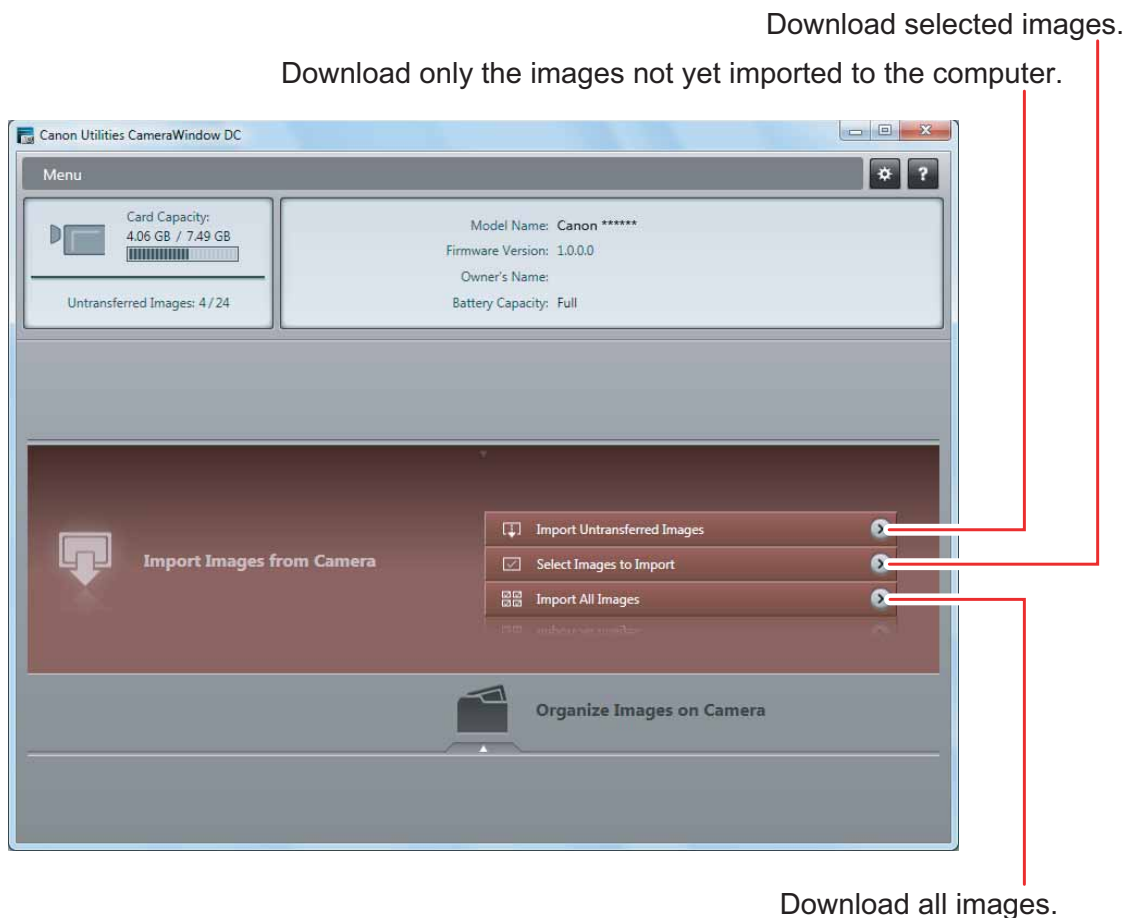
Your camcorder may not support some features of the software.

CameraWindow

After you connect the camcorder to your computer, you can use CameraWindow to download still images to the computer. Furthermore, you can delete still images saved on the camcorder, without having to download them to the computer, and you can upload still images from the computer to the camcorder (📖 56). You can also confirm and change the owner's name of the camcorder you specify (📖 63). Refer to *Starting CameraWindow* (📖 28) for launching the software.

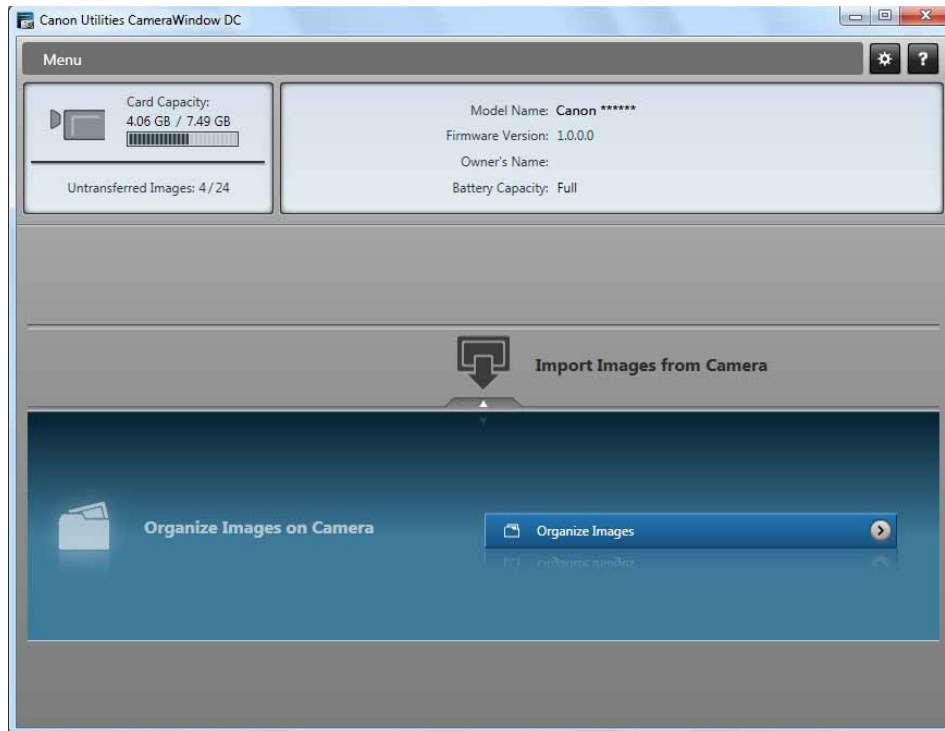
■ [Import Images from Camera] Window

After you connect the camcorder to your computer, use this window to download still images to the computer.

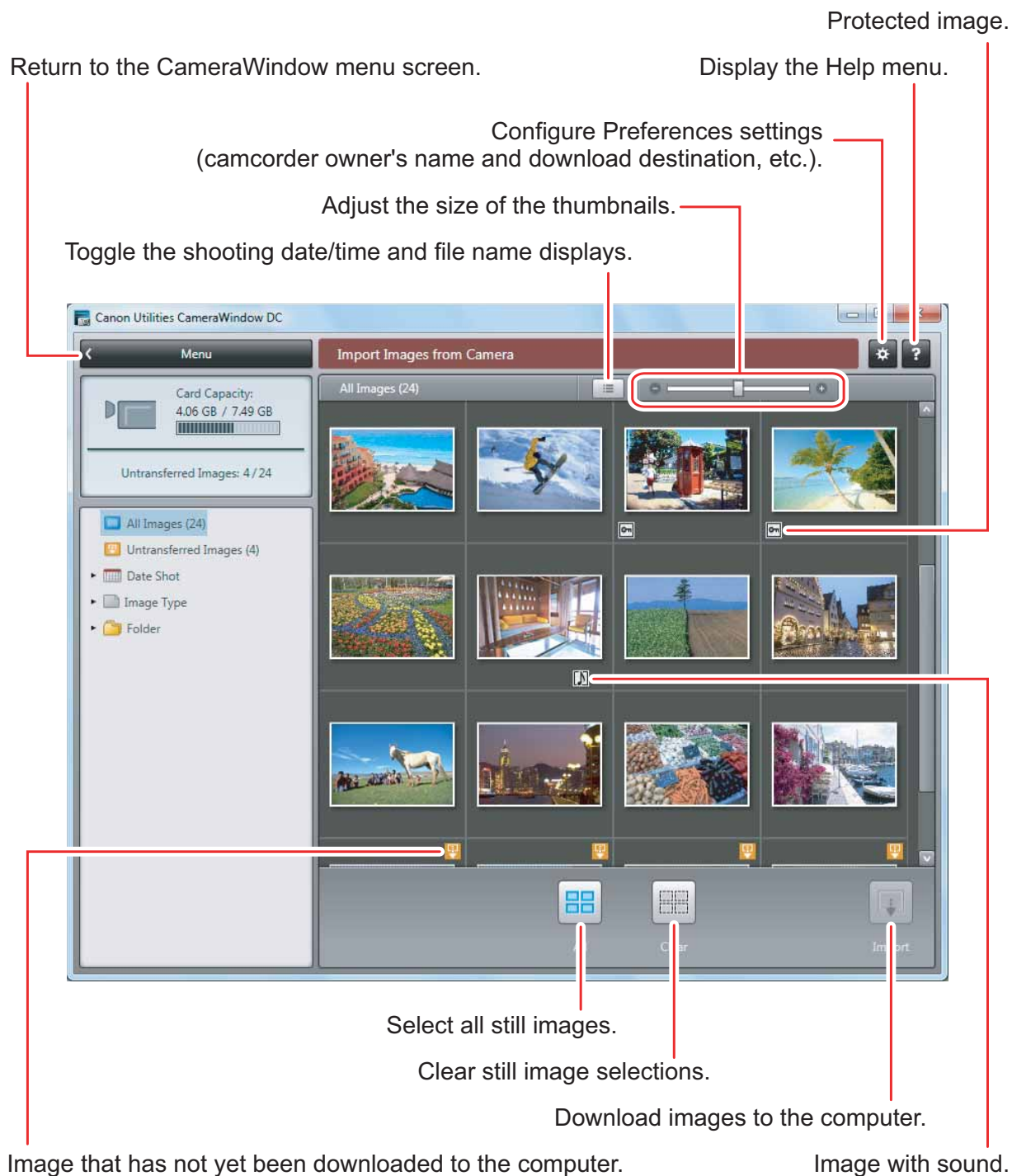


■ [Organize Images on Camera] Window

Delete still images saved on the camcorder, without having to download them to the computer, and upload still images from the computer to the camcorder.



■ [Import Images from Camera] Window



■ [Organize Images on Camera] Window

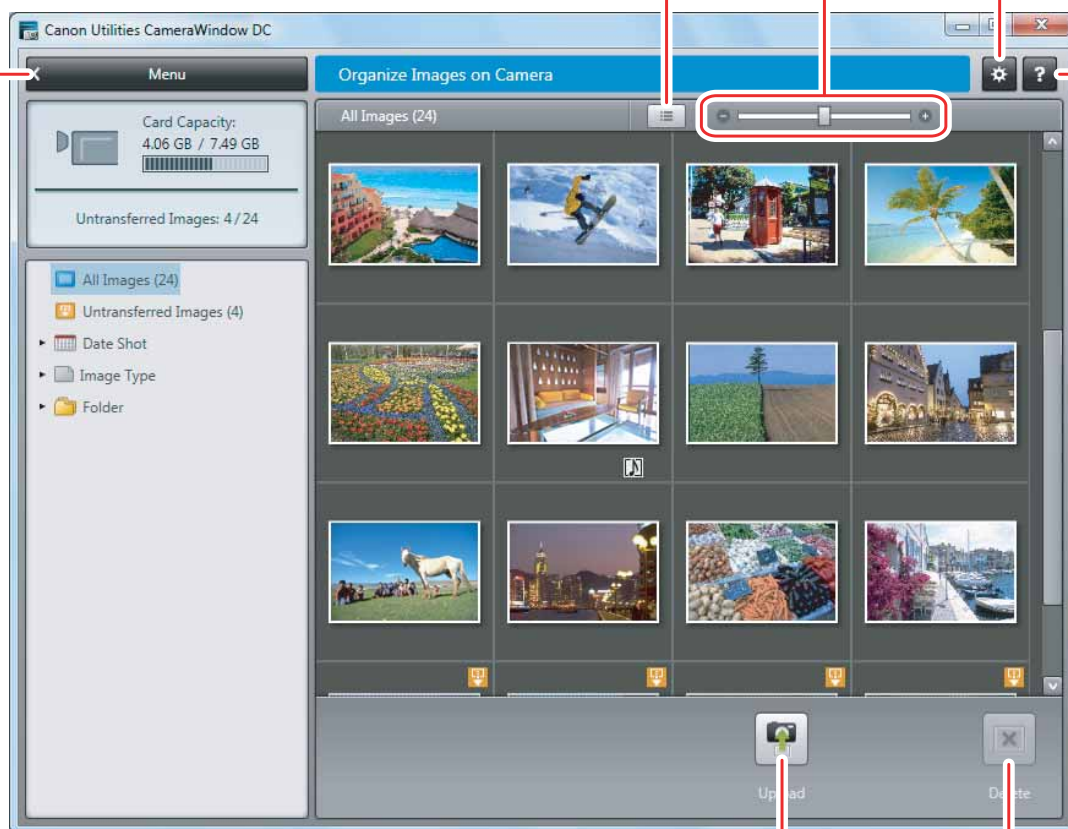
Return to the CameraWindow menu screen.

Display the Help menu.

Configure Preferences settings
(camcorder owner's name and download destination, etc.).

Adjust the size of the thumbnails.



Toggle the shooting date/time and file name displays.

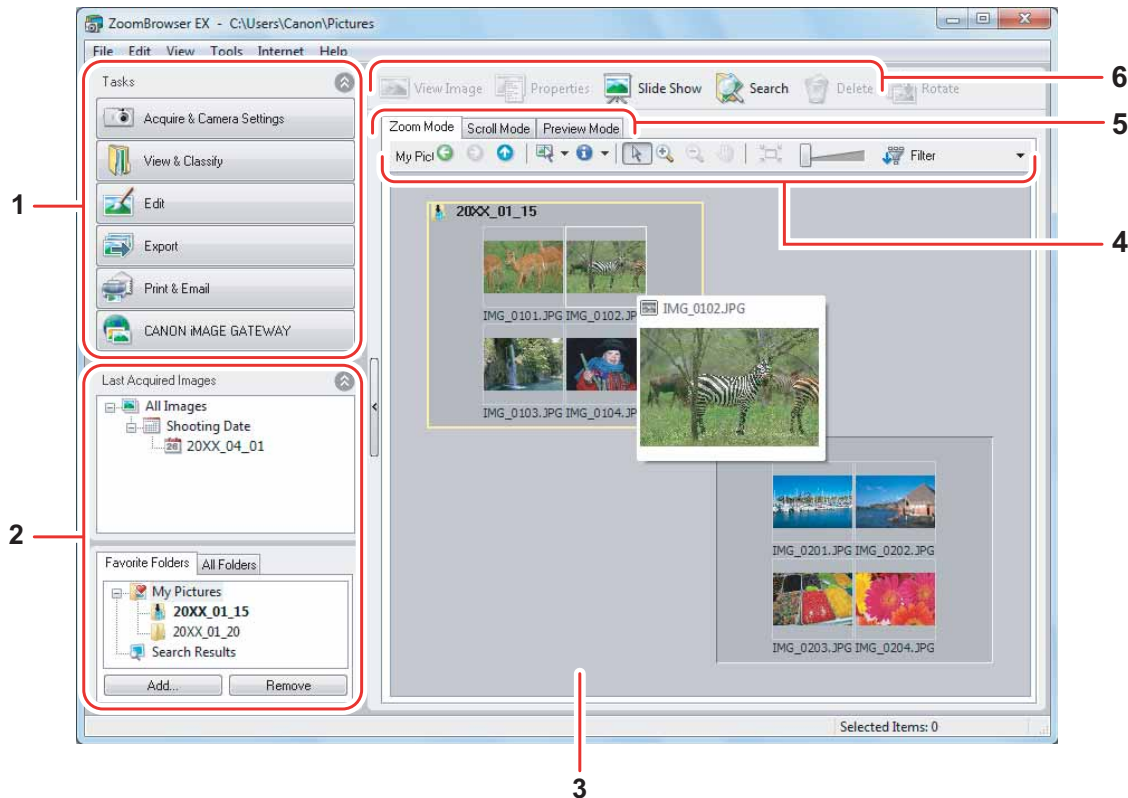


Upload selected still images to the camcorder.

Delete still images on the camcorder.

Main Window

ZoomBrowser EX is a software program used for organizing, printing and editing the downloaded still images. If you wish to start ZoomBrowser EX without connecting the camcorder or card reader/writer, double-click the  on the desktop, or click the Windows [start] menu and select [All Programs] ▶ [Canon Utilities] ▶ [ZoomBrowser EX] and [ZoomBrowser EX]. To exit ZoomBrowser EX, click  or select [Exit] from the [File] menu.



1 Task Area

[Acquire & Camera Settings]: Use this to display the Camera Control window to download still images, to print still images without having them downloaded to the computer and to configure the camcorder settings.

[View & Classify]: Use this to view and organize still images.


[Edit]: Use this to edit still images.

[Export]: Use this to change the data for still images and save them as new files, back up to CD-R/RW, or export shooting properties to a text file.

[Print & Email]: After you download still images to a computer, use this to print them or to attach them to e-mail messages.

[CANON iMAGE GATEWAY]: Use this to connect to CANON iMAGE GATEWAY.

2 Folders Area

You can select a folder to be displayed in the Browser Area. In the [Last Acquired Images] panel, the newly downloaded still images are placed into virtual folders classified by recording date. In the panel below, the folders where the downloaded still images are actually saved in are displayed. Selecting the [Favorite Folders] tab shows only the folders that are registered as favorites. The [All Folders] tab shows all available folders.  indicates that newly downloaded still images are in the folder. To register folders as Favorites, follow the instructions below.

When the [Favorite Folders] tab is selected:



Click [Add] and select a folder.

When the [All Folders] tab is selected:

Select a folder and click [Add to Favorites].

To remove the registered folder, select the folder, and click [Remove].

3 Browser Area

This area displays the images contained in the selected folder. If you place the cursor over a thumbnail in the browser area,  will be displayed at the upper right corner. Clicking  skips over folders to zoom in directly on the intended folder.



- Clicking on 2 images while holding down the [Shift] key selects also all images between the 2 images.
- Clicking on different images while holding down the [Ctrl] key selects multiple images.

4 Image display control panel

The menu items vary depending on the View Mode.

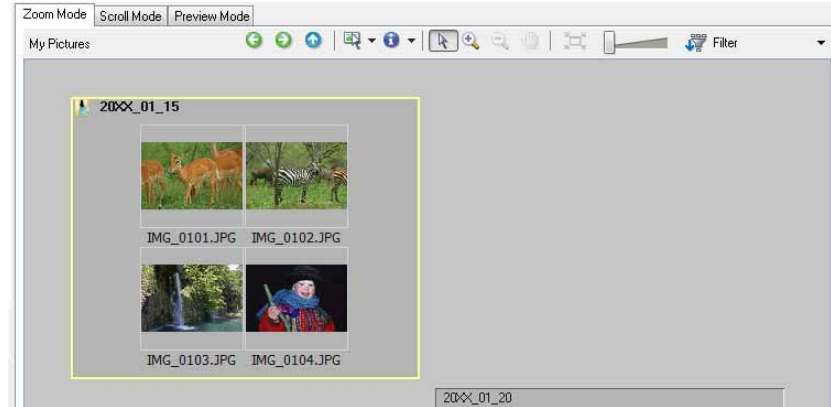


| | | |
|---|-----------------------------|--|
| 1 | Previous/Next | Displays the previous/next image in the current folder. |
| 2 | Up | Displays the folder in the upper tiers of the hierarchy. |
| 3 | Select | Allows you to select all images and deselects images. |
| 4 | Information | Allows you to select the information to be shown. You can also hide the pop-up window by clearing the check box. The pop-up window appears when you move the pointer over a thumbnail. |
| 5 | Pan | Changes the area displayed when you zoom in on a folder or image in the Browser Area and drags the thumbnail list. |
| 6 | Restore Display Size | Changes the size of the thumbnail list to fit the window. |
| 7 | Zoom Slider | Enlarges/Reduces the thumbnails in the Browser Area. |
| 8 | Filter | Allows you to select which still images to display according to the star rating. When you download the images, the star rating is set to two stars as a default. To change the star rating, refer to <i>Applying Star Ratings and Keywords</i> (📖 41). |

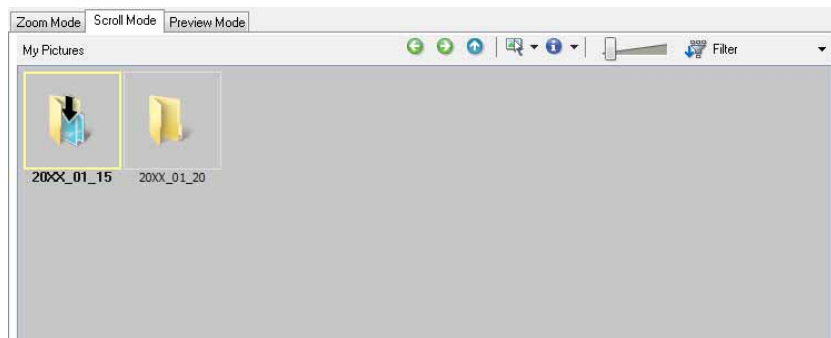
5 View Mode

You can select the view mode of images in the Browser Area.

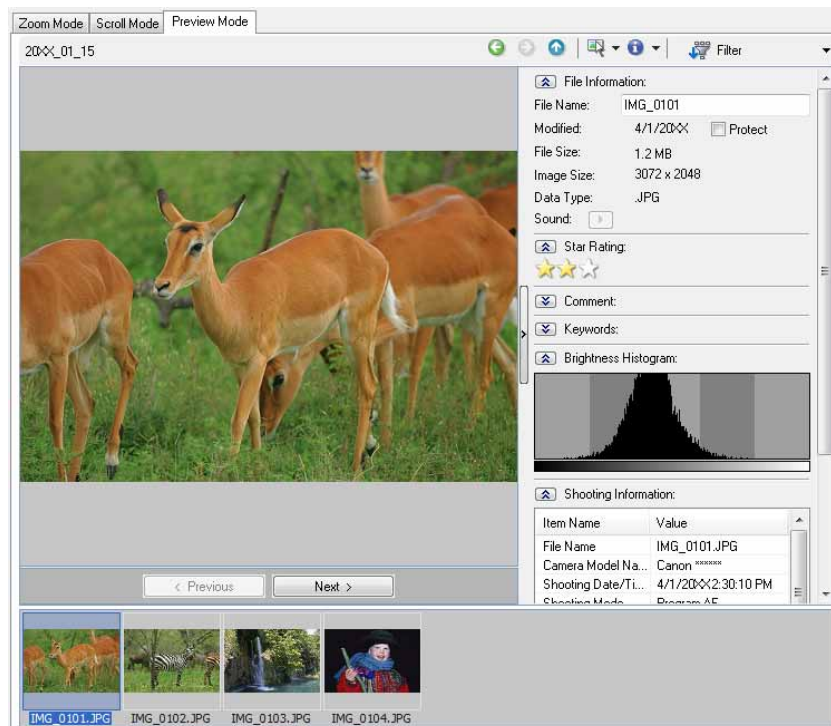
[Zoom Mode]: The images in the selected folder are shown as thumbnails.



[Scroll Mode]: Double clicking a folder shows thumbnails of the still images inside.

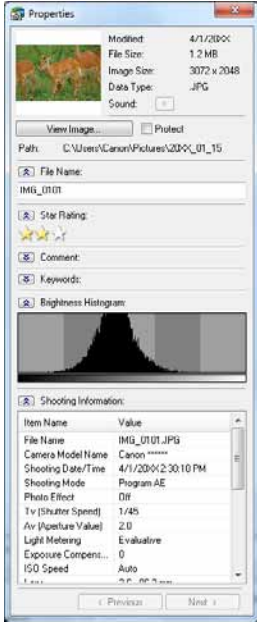


[Preview Mode]: Double clicking the folders at the bottom of the window opens the folder and shows a large still image in the folder along with detailed information. You can change file name and comments. To display another image, click [Previous]/[Next] or select an image shown at the bottom of the window.



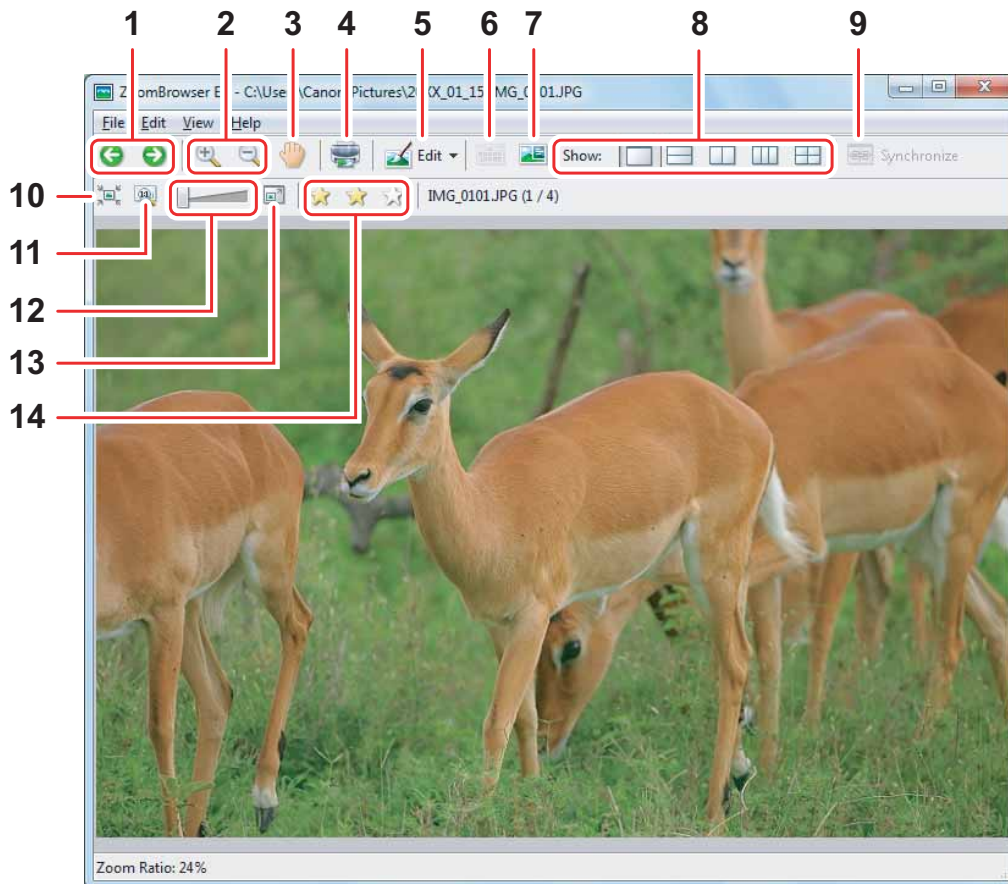
6 Command buttons



| | | |
|---|-------------------|---|
| 1 | View Image | Displays a selected image in the [Image Viewer] window. |
| 2 | Properties | <p>Displays properties of the selected still image. When you select a different image while the [Properties] window is open, the information switches to the one of the selected image. The [Properties] window cannot be displayed in [Preview Mode].</p>  |
| 3 | Slide Show | Displays still images in a slide show. |
| 4 | Search | Allows you to search for images (46). |
| 5 | Delete | Deletes selected images. |
| 6 | Rotate | Rotates selected still images. A movie cannot be rotated. |

[Image Viewer] Window

The [Image Viewer] window appears when you select an image and click [View Image] or double-click an image.




| | | |
|---|-----------------------------|--|
| 1 | Previous/Next | Displays the previous/next image in the current folder. |
| 2 | Zoom In/Zoom Out | Enlarges/Reduces a still image. |
| 3 | Pan | When the image is larger than the window, you can move the image in the desired direction. |
| 4 | Print | Prints the selected still image. Refer to <i>[Photo Print]</i> (37). |
| 5 | Edit | Allows you to perform the following operations: red-eye correction, auto correct, color and brightness correction, sharpness adjustment, trimming, inserting text, or registering external image editing applications. |
| 6 | Auto Focus Frame | This function cannot be used for the images recorded by the camcorder. |
| 7 | Shooting Information | The shooting information of the image will be displayed. |
| 8 | Show | Allows you to display multiple images at the same time. |
| 9 | Synchronize | Synchronizes the View functions across all displayed images. |

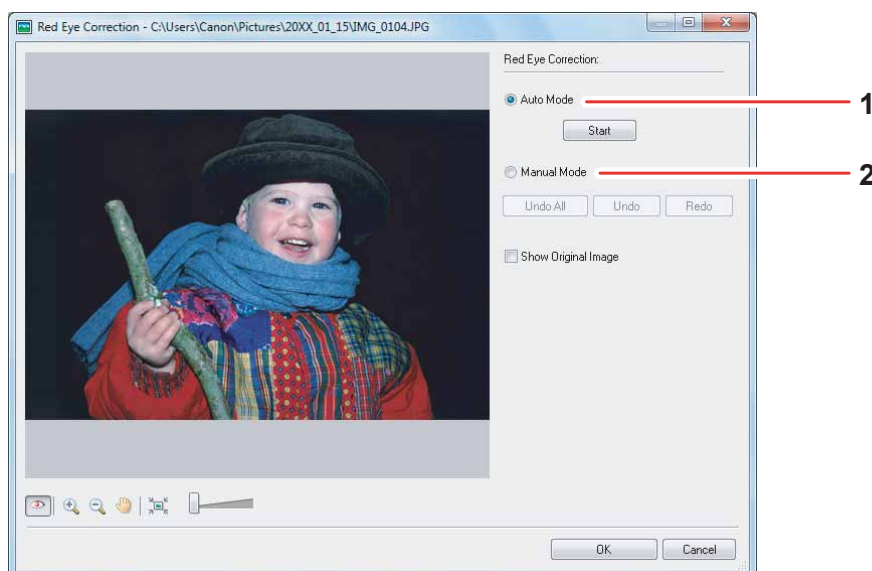
| | | |
|----|-------------------------------|--|
| 10 | Fit to Window | Matches the image size to the size of the Image Viewer Window. |
| 11 | Restore | Restores the standard display size. |
| 12 | Zoom Slider | Allows you to enlarge/reduce the displayed image. |
| 13 | Show Image Full Screen | Displays an image in full screen size. |
| 14 | Change the Star Rating | Allows you to change the star rating. |



Windows 7/Windows Vista: The star rating set using ZoomBrowser EX is not related to the “Rating” setting in Windows Photo Gallery and Windows Explorer.


■ [Red Eye Correction] Window

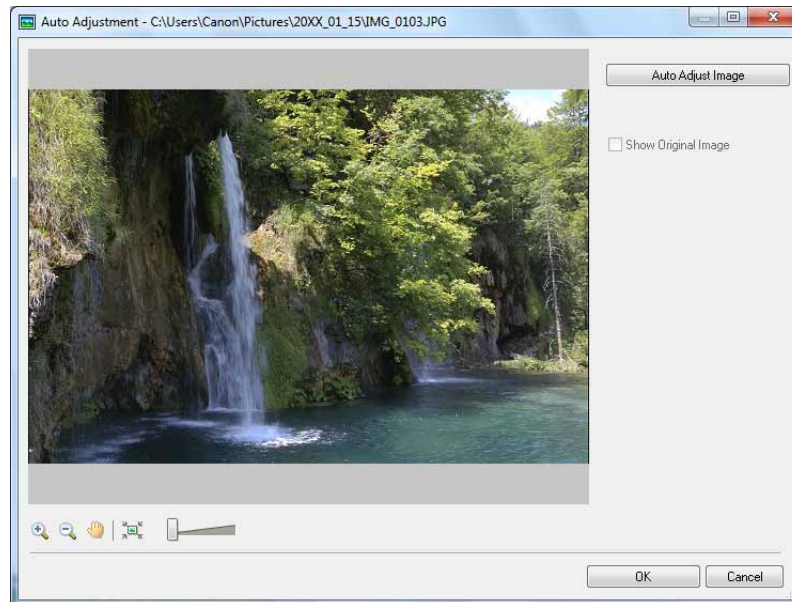
Select [Red Eye Correction] from the [Edit] menu, or click the  icon and select [Red Eye Correction]. Use this to correct still images in which people’s eyes appear red.




| | | |
|---|--------------------|--|
| 1 | Auto Mode | Clicking [Start] corrects the red eye effect automatically. |
| 2 | Manual Mode | Point the cursor on a red eye so that the area is highlighted green, and click the mouse button. |

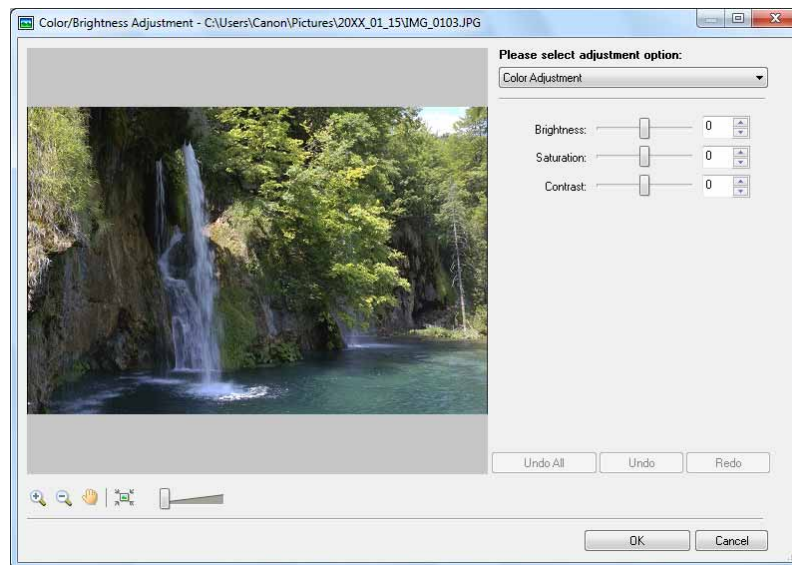
■ [Auto Adjustment] Window

Select [Auto Adjustment] from the [Edit] menu, or click the  Edit ▾ icon and select [Auto Adjustment]. Use this to automatically correct the color balance of the still image.




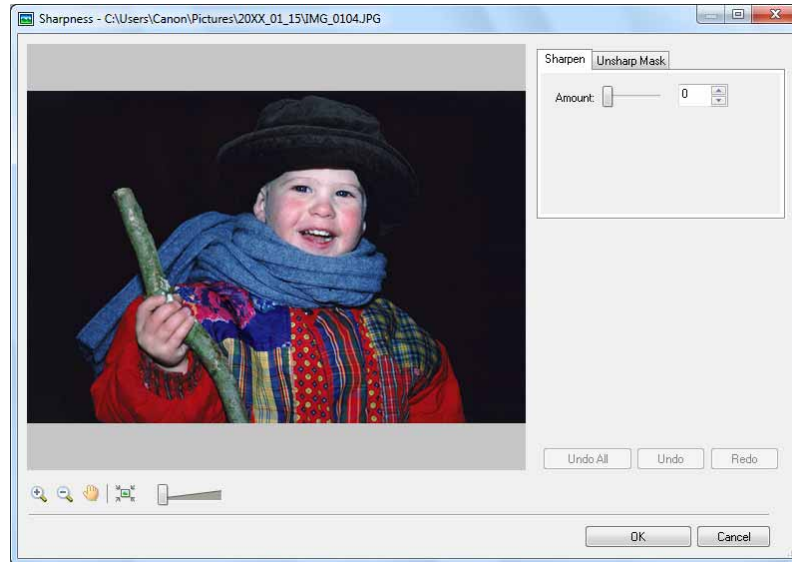
■ [Color/Brightness Adjustment] Window

Select [Color/Brightness Adjustment] from the [Edit] menu, or click the  Edit ▾ icon and select [Color/Brightness Adjustment]. Use this to adjust the brightness, saturation, contrast, intensity levels, tone curve and RGB of the still image.




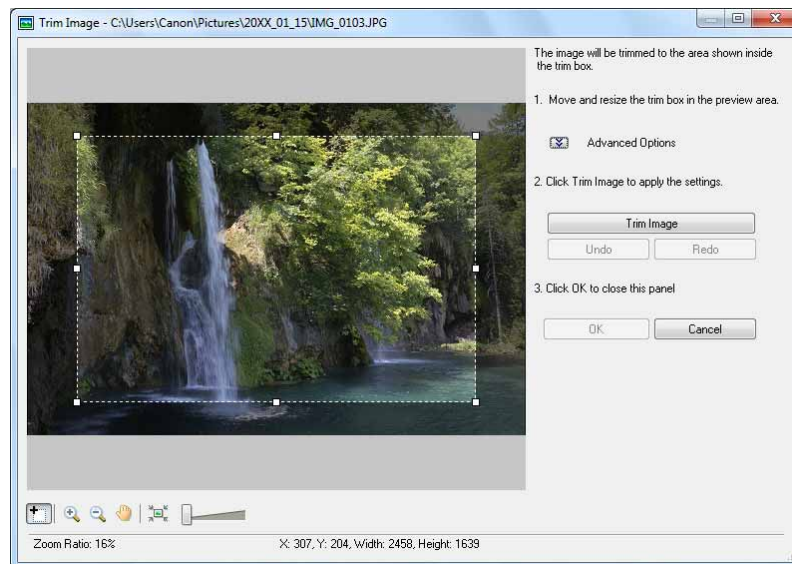
■ [Sharpness] Window

Select [Sharpness] from the [Edit] menu, or click the  icon and select [Sharpness]. Use this to emphasize and clarify the outlines of people and objects.




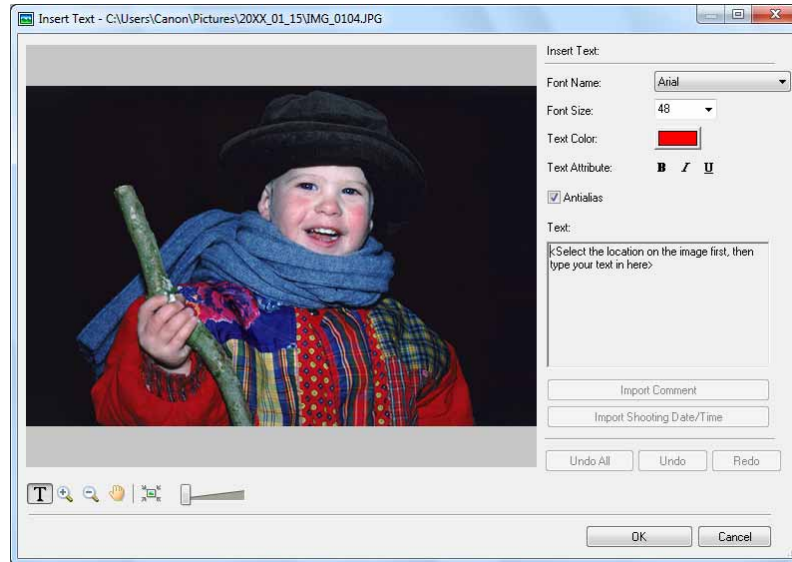
■ [Trim Image] Window

Select [Trim] from the [Edit] menu, or click the  icon and select [Trim]. Specify the area in the still image to crop and click [Trim Image] to trim the image.



■ [Insert Text] Window

Select [Insert Text] from the [Edit] menu, or click the  **Edit** icon and select [Insert Text]. Use this to write text on still images.



These image correction tools can be selected by clicking [Edit] ► [Edit Image] in Task Area of the main window.

Installing Photo Application



- Be sure to install Photo Application before connecting the camcorder to the computer.
- You must have authorization as a Computer System Administrator to install programs.



Your digital video camcorder is equipped with the standard Picture Transfer Protocol (PTP). This protocol enables you to download still images by simply connecting the camcorder to a computer with the USB cable (applications such as the [Scanner and Camera Wizard] start automatically).

However, note that there are several limitations to downloading still images with this method. To avoid these, install ZoomBrowser EX to download still images.

- It may take a few minutes, after connecting the camcorder, until you can download still images.
- Still images protected on the camcorder may lose this setting once they are downloaded to the computer.

1

Check that the camcorder is not connected to the computer.

While a camcorder is connected to the computer, the software cannot be installed normally. If a camcorder is connected, detach the USB cable from the computer.

2

Set the **HFR10 / HFR11 / HFR100 / HFM30 / HFM31 / HFM32 / HFM300 Instruction Manual/Photo Applications Ver. 34/Music Data Disc **HFS20 / HFS21 / HFS200** Photo Applications Ver. 34/Music Data Disc in the computer's CD-ROM drive.**

- Windows 7 / Windows Vista:
 - When the [AutoPlay] window appears, select [Open folder to view files] to open the folder, and then double-click [setup.exe]. Follow the instructions in the [User Account Control] window that appears after a brief period.
 - If the [AutoPlay] window does not open automatically, use the following procedures to display it.
 - 1) Select [Computer] from the Start menu.
 - 2) Right-click the CD-ROM icon and select [Open] from the displayed menu.
 - 3) Double-click the [setup.exe] icon.
 - 4) Follow the instructions in the [User Account Control] window that appears.

- Windows XP:
 - The folder appears automatically.
Double-click the [setup.exe] icon.
 - If the folder does not open automatically, use the following procedures to display it.
 - 1) Select [My Computer] from the [start] menu.
 - 2) Right-click the CD-ROM icon and select [Open] from the displayed menu.
 - 3) Double-click the [setup.exe] icon.

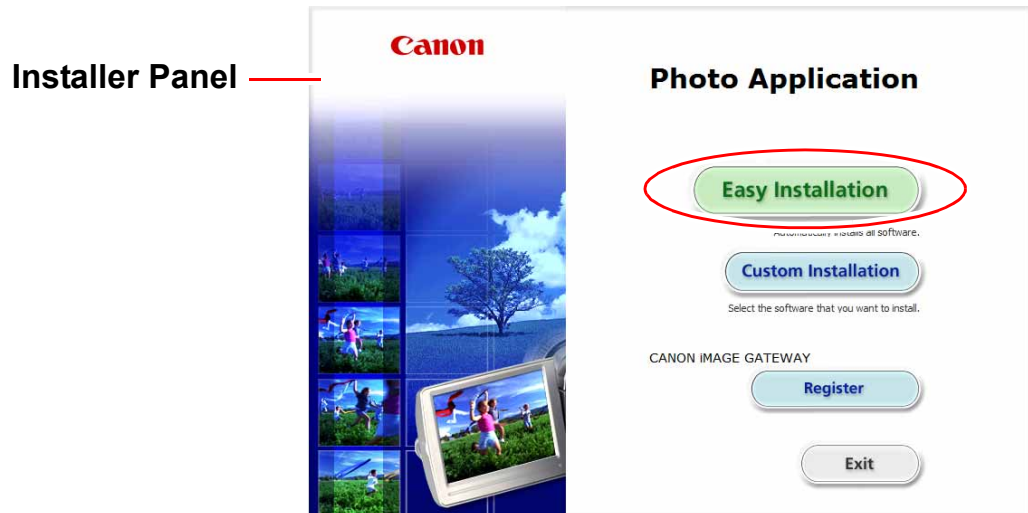
Depending on your computer's settings, the file extension ".exe" may not appear.

3 Select your country or region.

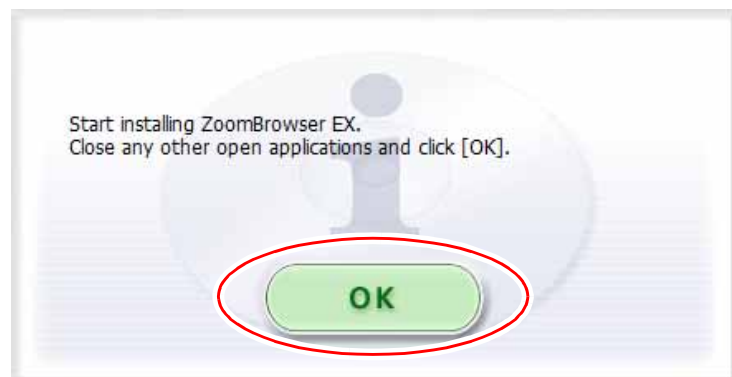
4 Select your language.

5 Click [Easy Installation] under Photo Application.

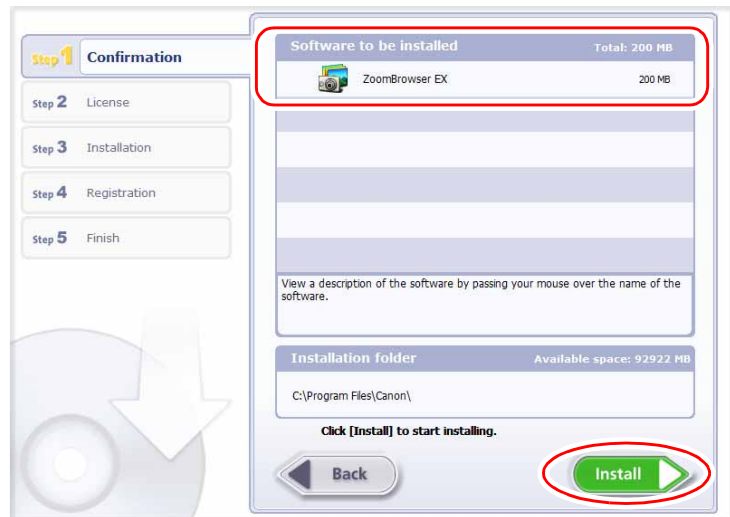
To specify the installation folder, click [Custom Installation].



6 If other software is running, close all programs and click [OK].



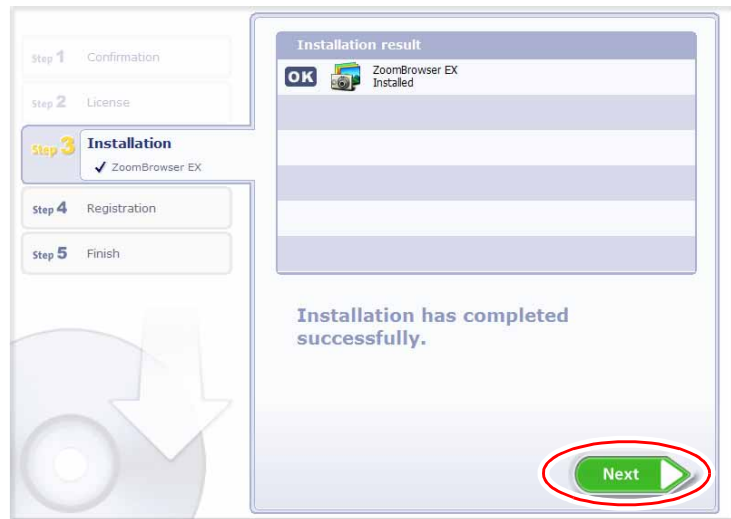
7 Review the installation settings and click [Install].



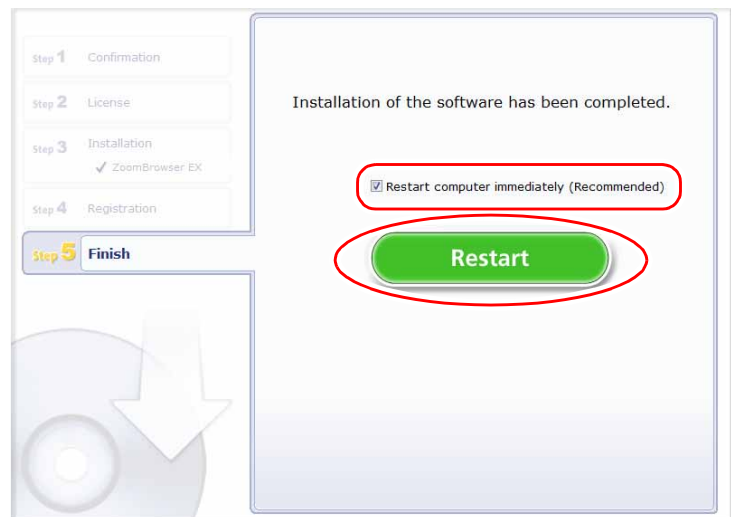
8 Read the license agreement and click [Yes] to accept the terms and to start installation.



9 Click [Next].



10 When the installation is complete, make sure [Restart computer immediately (Recommended)] is selected and then click [Restart].



When you do not need to restart the computer, the [Finish] screen will be displayed. Click [Finish]; remove the **HFR10** / **HFR11** / **HFR100** / **HFM30** / **HFM31** / **HFM32** / **HFM300** Instruction Manual/Photo Applications Ver. 34/Music Data Disc **HFS20** / **HFS21** / **HFS200** Photo Applications Ver. 34/Music Data Disc from the CD-ROM drive, and proceed to *Before Downloading Still Images* (25).

11 When the computer has restarted and the regular desktop screen is displayed, remove the **HFR10 / HFR11 / HFR100 / HFM30 / HFM31 / HFM32 / HFM300** Instruction Manual/Photo Applications Ver. 34/ Music Data Disc **HFS20 / HFS21 / HFS200** Photo Applications Ver. 34/ Music Data Disc from the CD-ROM drive.

When installation is complete, remove the **HFR10 / HFR11 / HFR100 / HFM30 / HFM31 / HFM32 / HFM300** Instruction Manual/Photo Applications Ver. 34/Music Data Disc **HFS20 / HFS21 / HFS200** Photo Applications Ver. 34/Music Data Disc before you connect the camcorder to the computer.

Before Downloading Still Images

Connecting the Camcorder to a Computer



- Be sure to install Photo Application before you connect the camcorder to the computer.
- Make sure the camcorder is being powered using the power adapter before connecting it to a computer.
- Connect the USB cable directly to one of the computer's main USB ports. The interface may not function correctly if the camcorder is connected via a USB hub.
- The connection may not operate correctly if you are using other USB devices, excluding USB mice or keyboards, at the same time. If this occurs, disconnect the other devices from the computer and try reconnecting the camcorder.
- Do not connect two or more camcorders to the computer. The camcorders may not operate normally.
- **Never allow the computer to go into standby (sleep) mode while a camcorder is connected via the USB interface.**



- Refer to your computer manual for the location of the computer's USB ports.
- For details about changing settings on the camcorder and connecting the camcorder to the computer, see the camcorder's instruction manual.

■ Settings on the Camcorder

Before connecting the camcorder to the computer, change the following camcorder settings in advance.

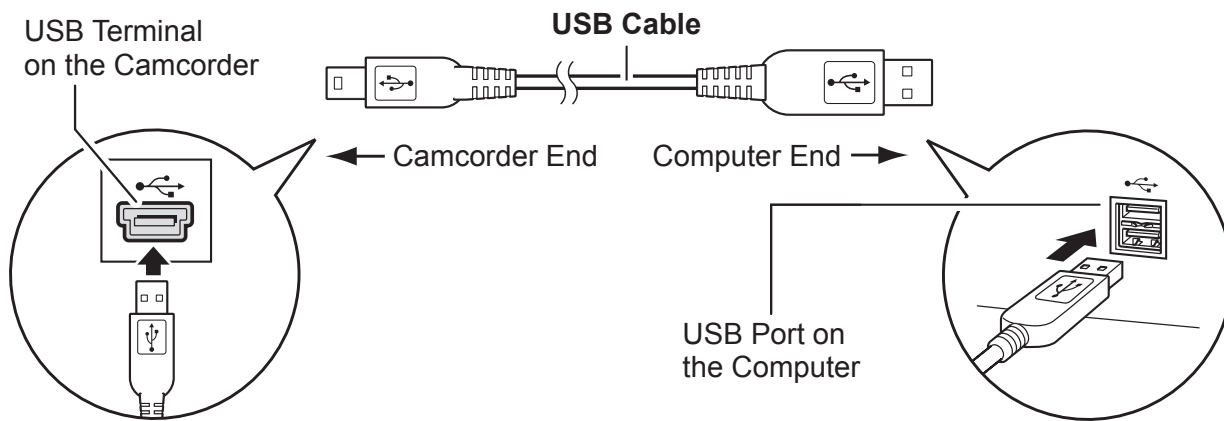
- In the still images index screen, select which still images to play back (built-in memory or memory card).
- In the [SYSTEM SETUP] menu, set [USB SETTING] to one of the following options.
 - [PC/PRINTER]:
To simply connect the camcorder to the computer without further operations.
 - [CONNECT&SET]:
Select [PC/PRINTER] on the camcorder every time you connect it to a computer.

■ Connecting the Camcorder

- 1 Connect the compact power adapter to the camcorder.**
- 2 If downloading images from a memory card, insert the memory card into the camcorder.**
- 3 Set the camcorder to still image playback mode.**
Wait until the ACCESS indicator stops flashing.

4 Attach the supplied USB cable to the computer's USB port and the camcorder's USB Terminal.

- Restart the computer if you are prompted to restart it the first time you connect the camcorder to the computer.
- A window appears allowing you to select an application program to start.
- For instructions on how to start ZoomBrowser EX and download images to the computer, see *Downloading Still Images* (📖 27).



Downloading Still Images



- Observe the following precautions when the camcorder's access indicator is flashing. Failure to do so may cause data to become corrupted.
 - Do not remove the memory card or detach the USB cable.
 - Do not turn off the camcorder or the computer.
 - Do not switch between the shooting and playback modes.
- The still images you recorded and/or downloaded to the hard disk are important original data files. Create a copy of the file first before working on it on your computer.
- Do not rotate the image using programs other than ZoomBrowser EX. The data for the original image will be changed and the image can no longer be displayed in ZoomBrowser EX or on the camcorder.
- If the Server Busy window appears when you connect the camcorder to the computer, click [Retry].
- If the built-in memory or the memory card contains a large number of images, the correct connection to the computer may not be possible. The maximum number of images depends on the camcorder used, so please refer to the relevant chapter in your camcorder's Instruction Manual. In such case, copy the images from the built-in memory to a memory card and then use a card reader/writer to transfer the images to the computer. For instructions on how to connect a card reader/writer, see *Using a Card Reader/Writer* (📖 33).
- The memory capacity that appears in the CameraWindow menu screen will differ from the capacity that appears on the camcorder's screen.

Starting CameraWindow

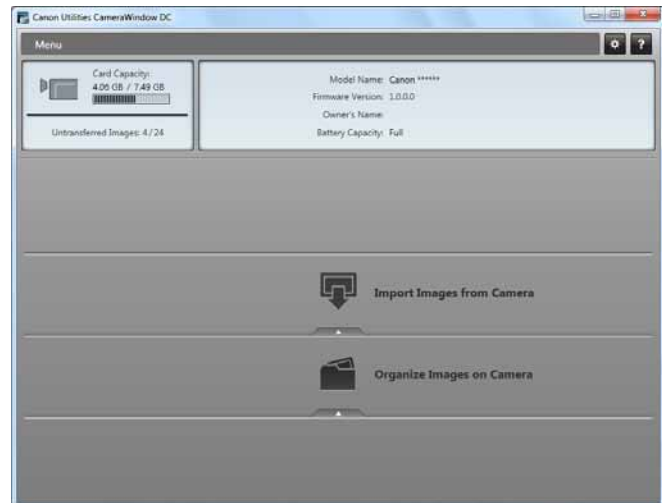
1 Connect the camcorder to the computer (📖 25).

2 Select **[Canon CameraWindow]** and click **[OK]**.

- Windows 7 / Windows Vista: When the [AutoPlay] window appears, click [Downloads Images From Canon Camera using Canon CameraWindow].
- If a camcorder and card reader are connected at the same time, a dialog appears allowing you to select the camcorder model. Confirm that [Canon Camera] or your camcorder model name is displayed and click [OK].



- The CameraWindow menu screen opens.



- If the camcorder is already connected to the computer, you can start CameraWindow and display the CameraWindow menu screen by clicking [Acquire & Camera Settings] followed by [Connect to Camera] in the main window of ZoomBrowser EX.

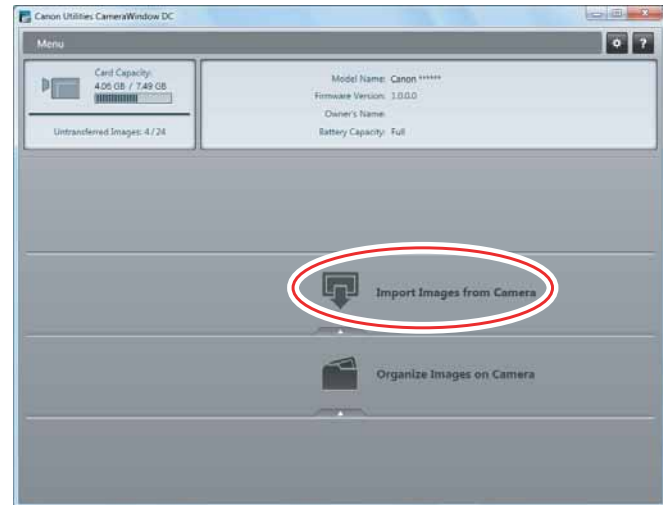
Downloading Still Images to the Computer

You can select a downloading method in the [Import Images from Camera] window.

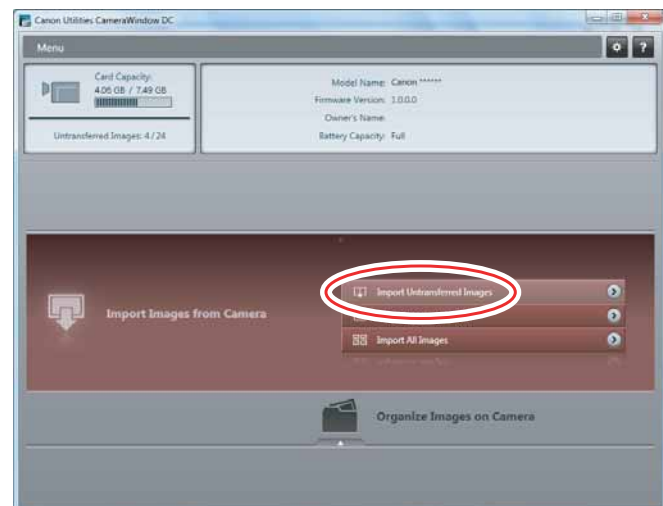
■ Downloading Untransferred Images

Download only the images not yet imported to the computer.

- 1 Connect the camcorder to the computer.**
- 2 Click [Import Images from Camera] in the CameraWindow menu screen.**



- 3 Click [Import Untransferred Images].**

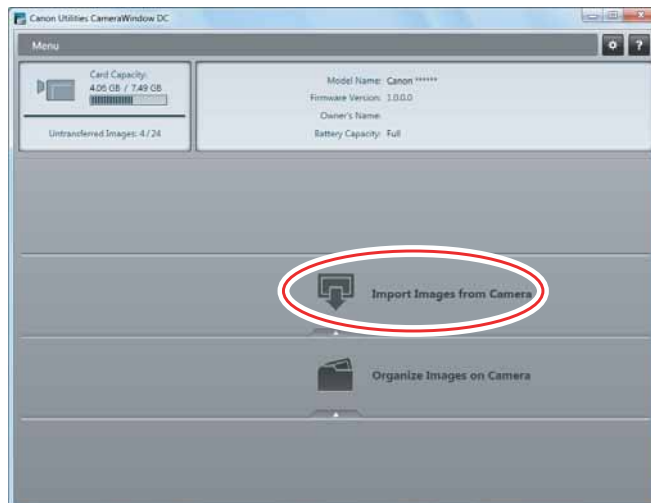


When the download completion screen appears, click [OK] to close the CameraWindow screen. The downloaded images will appear in the main window of ZoomBrowser EX.

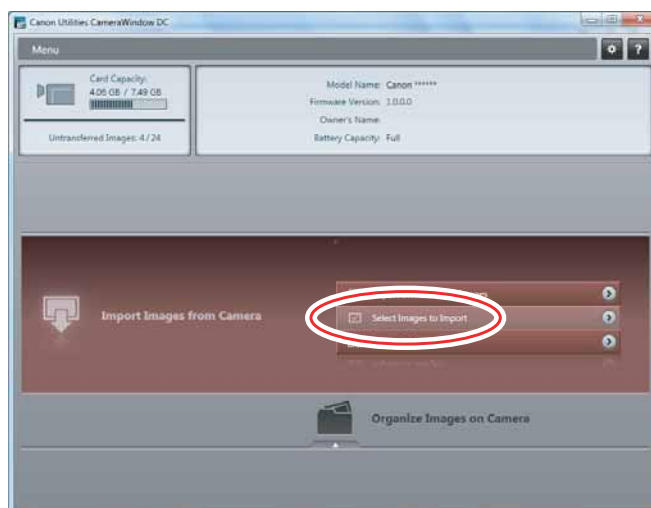
■ Downloading Selected Images

Download only the images that you select.

- 1 Click [Import Images from Camera] in the CameraWindow menu screen.



- 2 Click [Select Images to Import].



3 Select images for download in the [Import Images from Camera] window, and click the [Import] button.

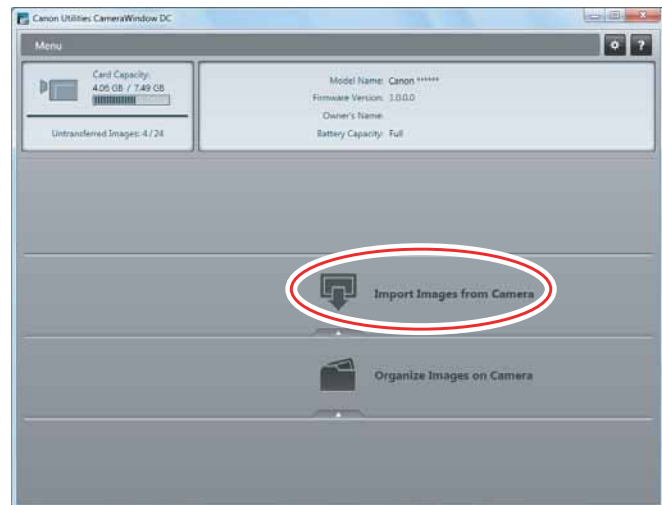


When the download completion screen appears, click [OK] to close the CameraWindow screen. The downloaded images will appear in the main window of ZoomBrowser EX.

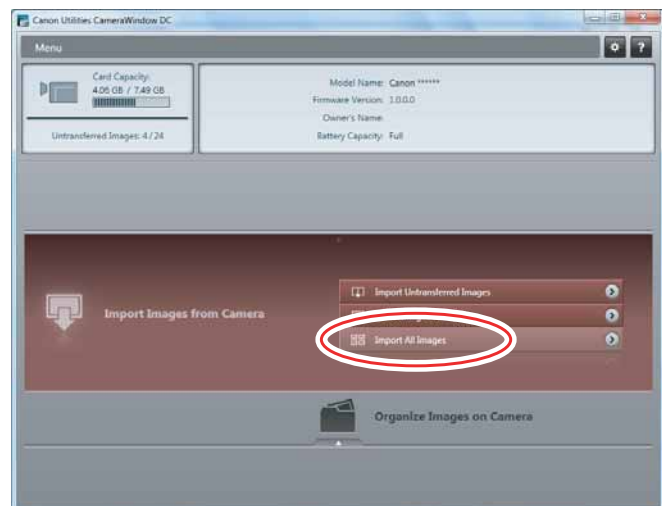
■ Downloading All the Images on the Camcorder

Download all the images saved on the camcorder.

- 1 Click [Import Images from Camera] in the CameraWindow menu screen.



- 2 Click [Import All Images].



When the download completion screen appears, click [OK] to close the CameraWindow screen. The downloaded images will appear in the main window of ZoomBrowser EX.

Using a Card Reader/Writer

Select a download method in the image download window.

The basic operations are the same as when you connect the camcorder to the computer. Follow the procedure below to open the CameraWindow. For instructions on how to connect the card reader/writer, refer to its manual.



If you are using SDHC/SDXC cards, you need to use a card reader/writer compatible with SDHC/SDXC cards.

1 Insert a memory card containing images recorded with the camcorder into the card reader/writer and connect it to the computer.

When a window appears allowing you to select an application program to start, select [View/Download Images using Canon ZoomBrowser EX] and click [OK].



Clicking [Acquire & Camera Settings] ► [Acquire Images from Memory Card] in the main window of ZoomBrowser EX also opens the image download window.

2 Select a downloading method.

- [Download Images]: A progress bar will be displayed and images will be downloaded to the computer, and ZoomBrowser EX starts. For instructions on how to set the Auto-download settings, see *Auto-Downloading Settings* (34).
- [Lets you select and download images]: ZoomBrowser EX opens, displaying the still images on the memory card as thumbnails (small images).



■ Auto-Downloading

1 Click [Download Images].

- For instructions on how to set the Auto-download settings, see *Auto-Downloading Settings* (📖 34).
- Click [Exit] to close the window after downloading images.



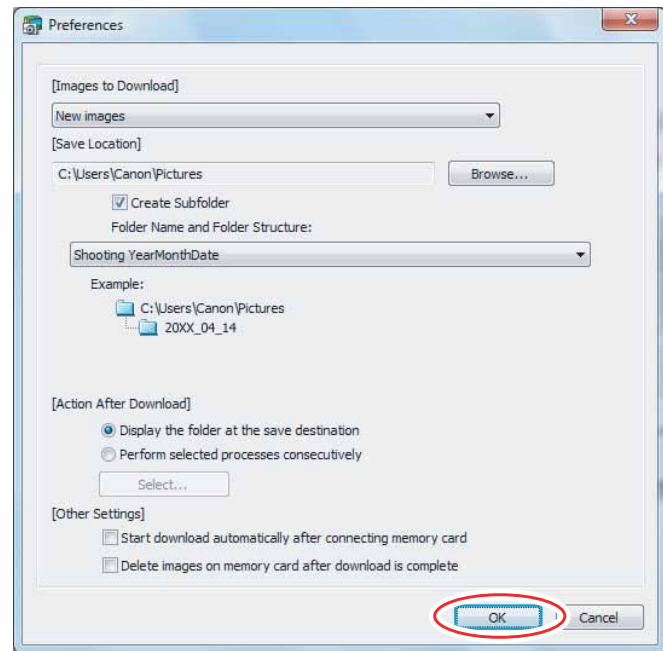
■ Auto-Downloading Settings

Select the setting for downloading images by operating your computer. You can change the image type and the destination folder.

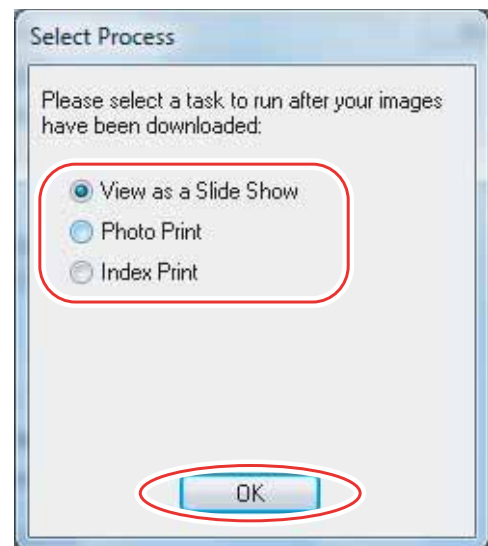
1 Click [Preferences].



2 Configure the settings and click [OK].



The window below will be displayed when you select [Perform selected processes consecutively] or [Select] under [Action After Download]. Select a process to perform after the image is downloaded, and click [OK].



■ Downloading the Selected Still Images from ZoomBrowser EX

1 Click [Lets you select and download images].

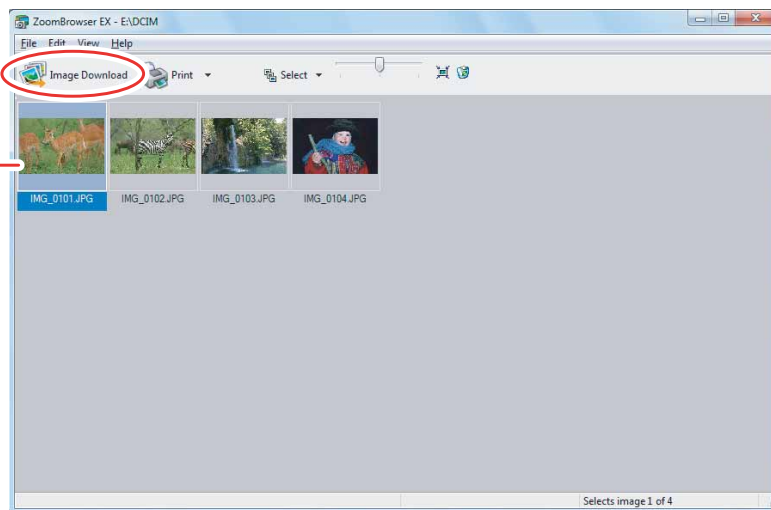
ZoomBrowser EX opens.



2 In ZoomBrowser EX, select the image you wish to download and click [Image Download].

- Clicking on 2 images while holding down the [Shift] key selects also all images between the 2 images.
- Clicking on different images while holding down the [Ctrl] key selects multiple images.

A blue frame
appears around
the selected image.



Printing Still Images

You can select one of the following 2 methods to print still images.

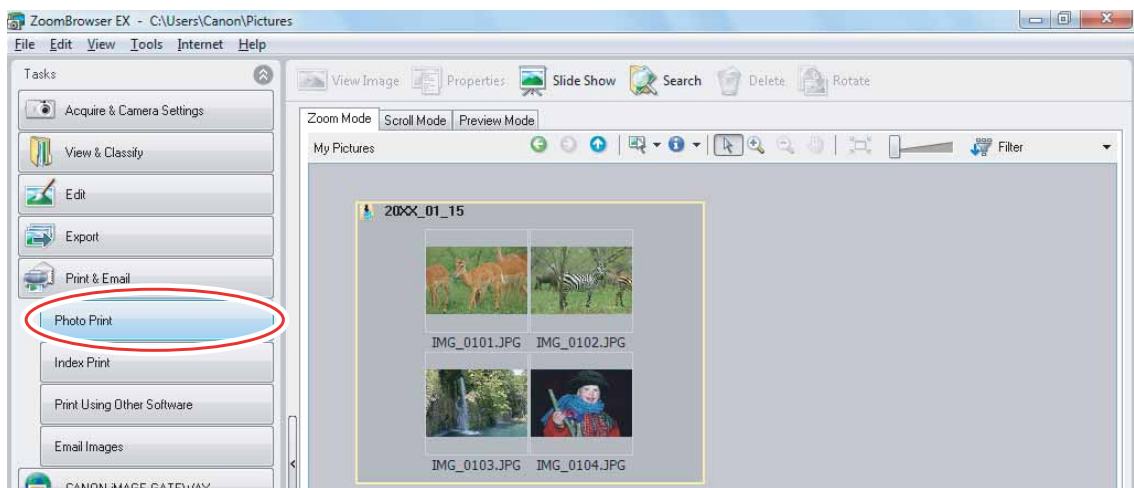
- [Photo Print]
 - Prints one still image per page.
- [Index Print]
 - Prints selected images in rows with file names and image information.



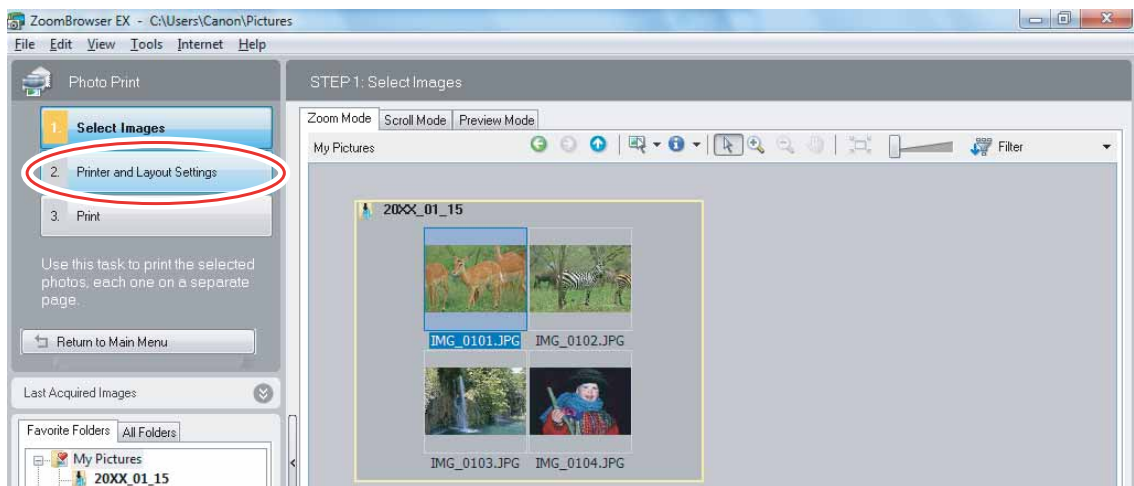
You can select the program to use for printing by clicking [Print & Email] in the main window and selecting [Print Using Other Software].

■ [Photo Print]

1 Click [Print & Email] in the main window and click [Photo Print].



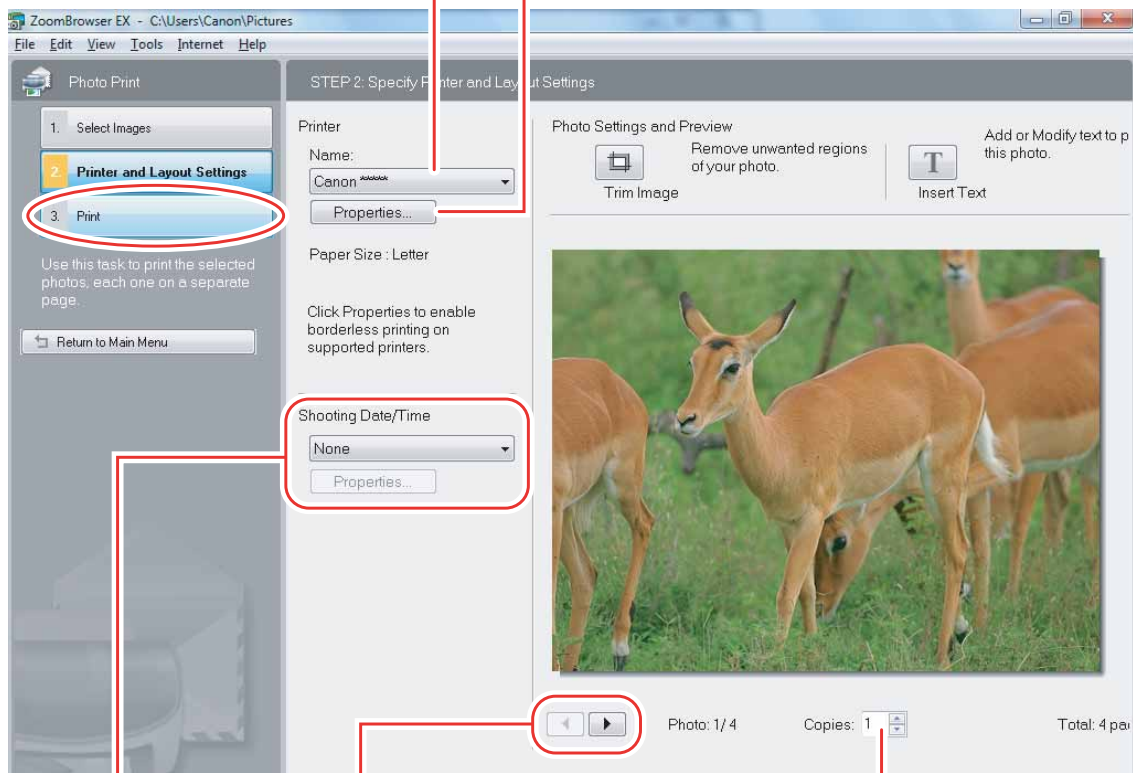
2 Select still images you wish to print and click [Printer and Layout Settings].



3 Specify the print settings and click [Print].

Selects the printer.

Sets the paper size settings.



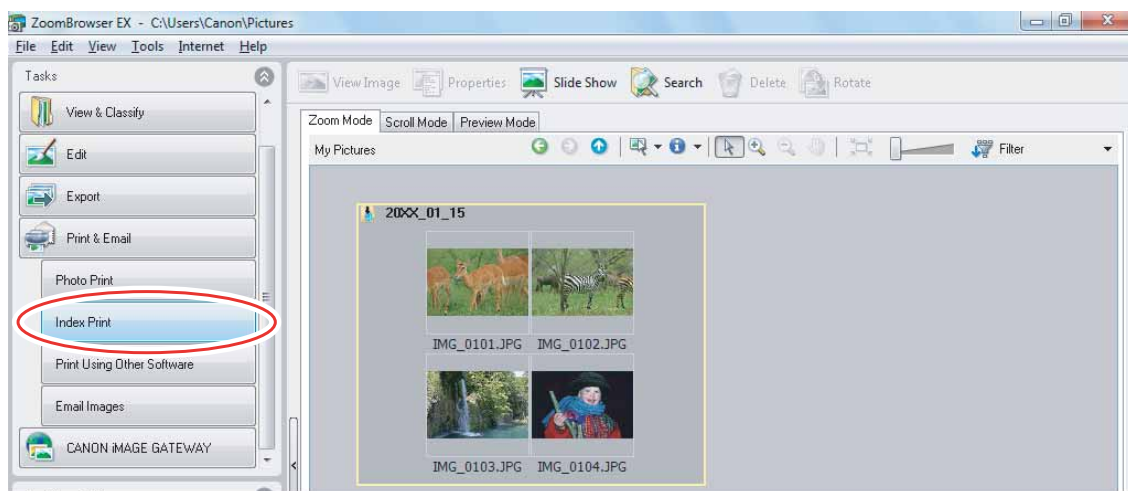
Click this button to switch between still images if multiple images are selected.

Sets the number of print copies of the displayed image.

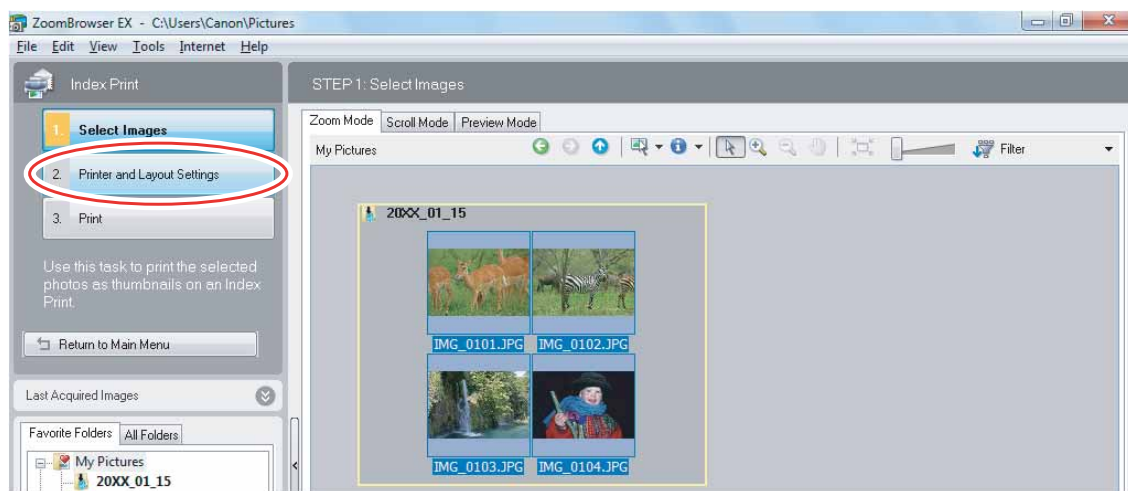
Sets the shooting date/time imprint and color settings.

■ [Index Print]

- 1 Click [Print & Email] in the main window and click [Index Print].



- 2 Select the still images you wish to print and click [Printer and Layout Settings].



3 Specify the print settings and click [Print].

Sets the paper size and orientation.

Selects the printer.

Rotates still images.

Click this to use the trimming function (crops a portion of the still image).

Click these buttons to switch between pages.

Sets the print settings for shooting information, comments, headers, footers and page numbers.

Sets the number of rows and columns.

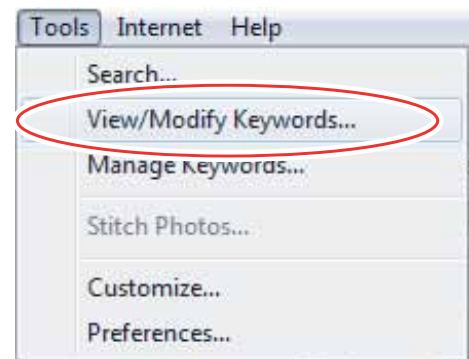
Sets the number of print copies of the contact sheets.

Organizing Images

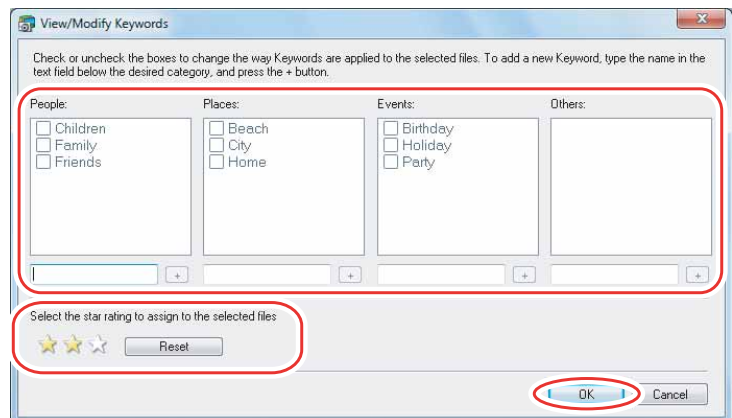
Applying Star Ratings and Keywords

This task allows you to apply ratings to your images from one star to three stars. The star rating can be used as one of the search conditions, or for the selection of images to be displayed in the Browser Window. The keyword can be used as one of the search conditions.

- 1 **Select the image to which you wish to apply the star rating or keyword, and select [View/Modify Keywords] from the [Tools] menu.**



- 2 **Place a check mark next to the keyword you wish to apply, or click on the stars for rating.**

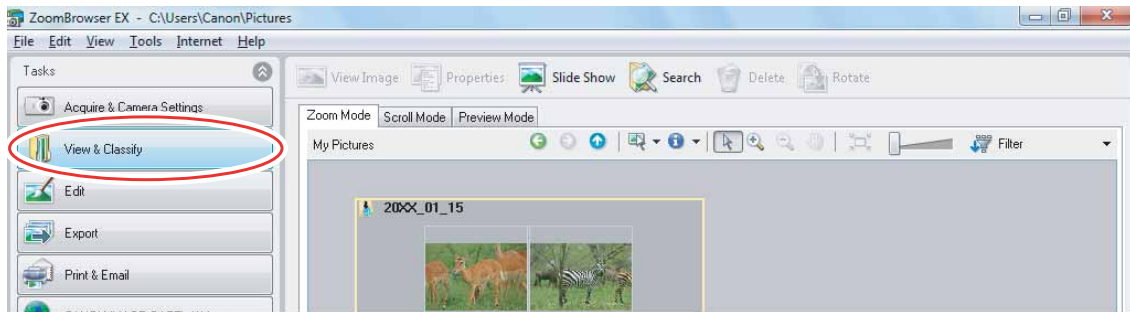


- The default setting of the star rating is two stars.
- You can add and delete keywords, or change the keyword list in the [Manage Keywords] window by selecting [Manage Keywords] from the [Tools] menu.
- Windows 7 / Windows Vista: The star rating set using ZoomBrowser EX is not related to the "Rating" setting in Windows Photo Gallery and Windows Explorer.

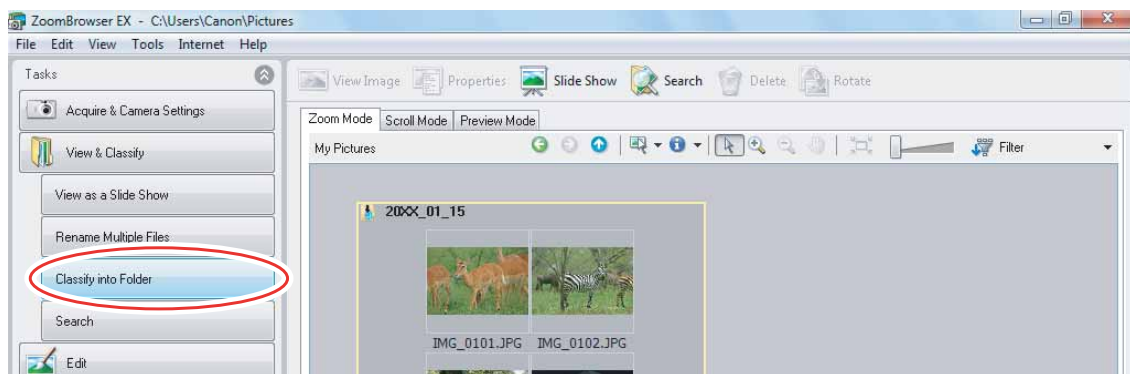
Classifying the Images

This task allows you to classify selected images according to the shooting date.

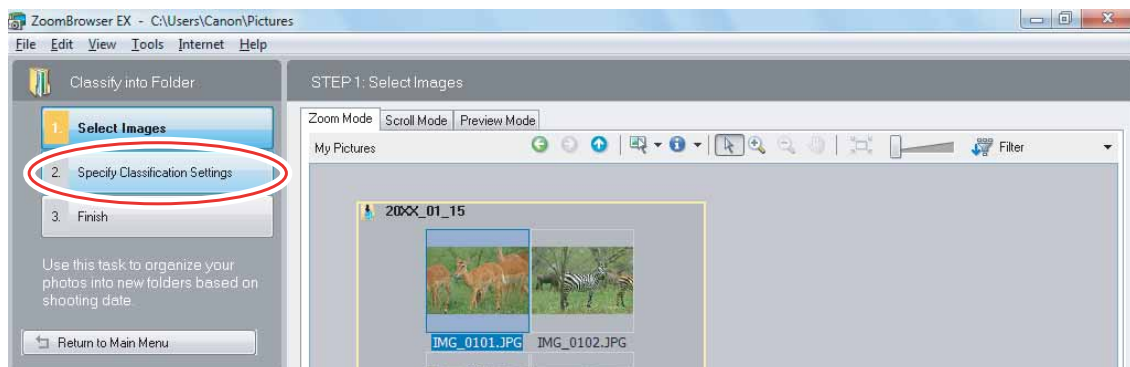
1 Click [View & Classify] in the main window.



2 Click [Classify into Folder].

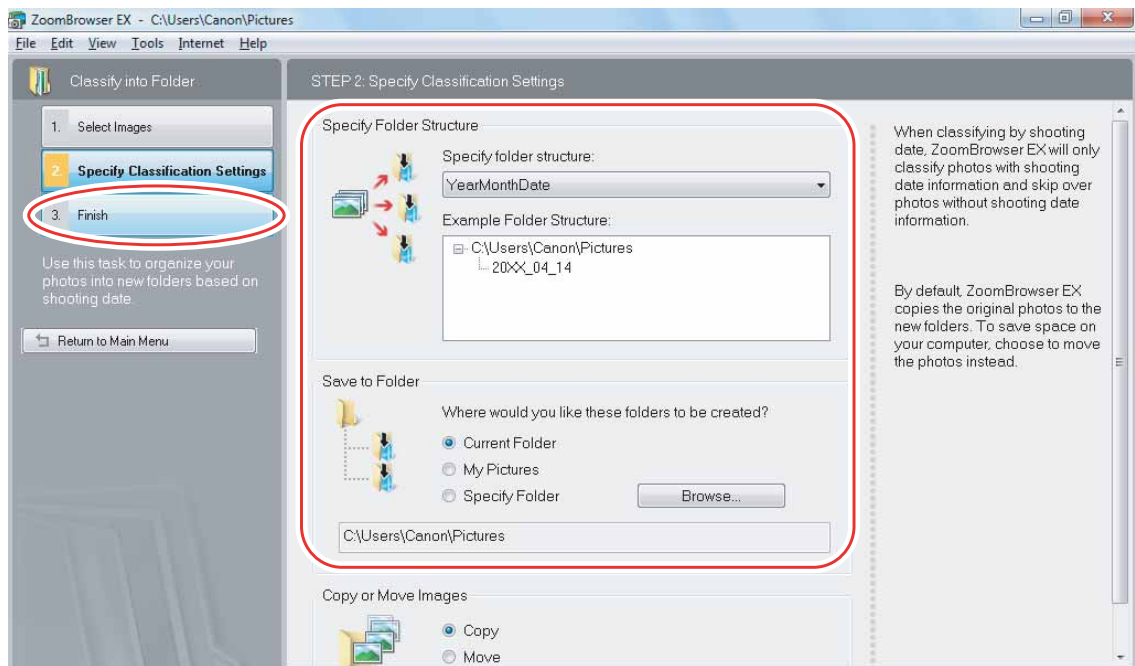


3 Select the images you wish to classify and click [Specify Classification Settings].



4 Specify the folder structure and the saving folder and click [Finish].

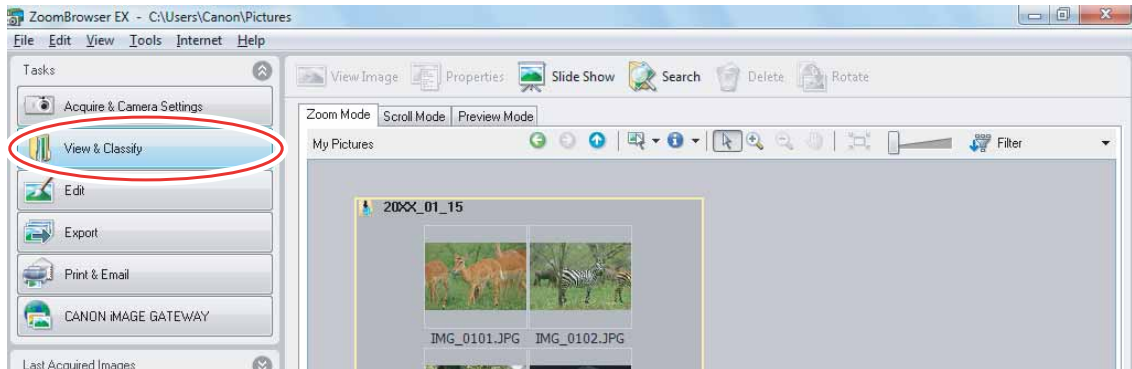
The selected images are classified into the specified folder.



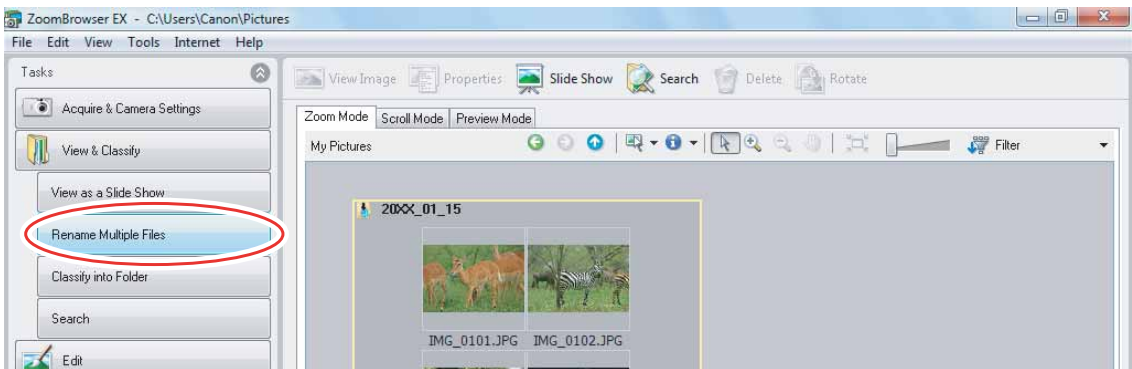
Renaming Multiple Files

This task allows you to rename multiple files at the same time, or to rename and copy multiple files.

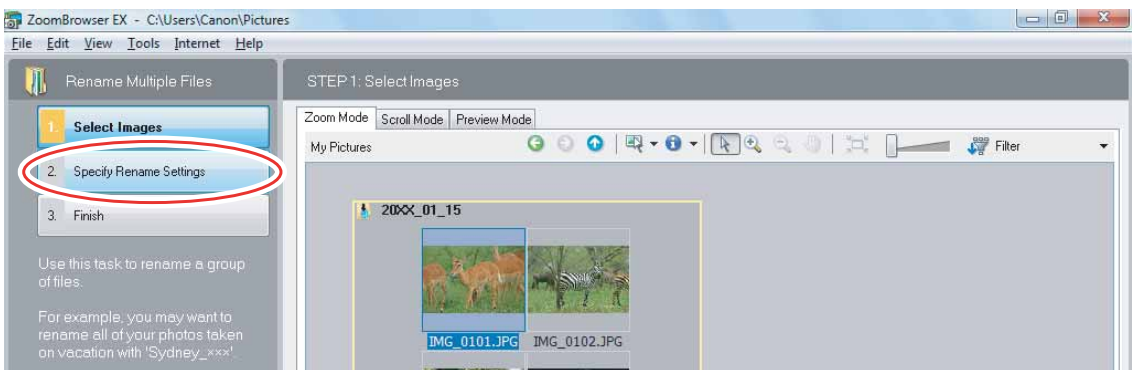
1 Click [View & Classify] in the main window.



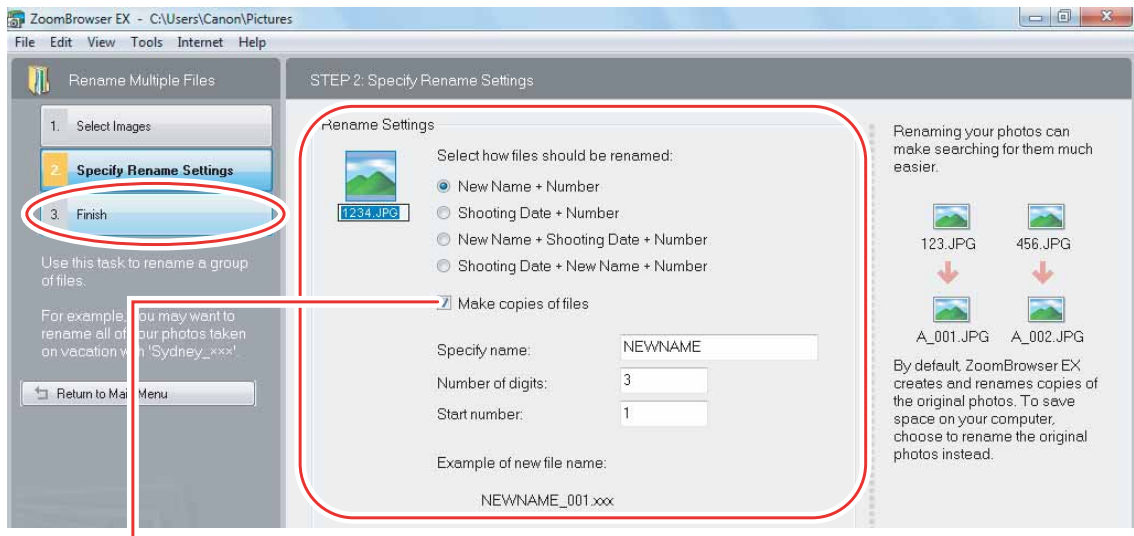
2 Click [Rename Multiple Files].



3 Select the images you wish to rename and click [Specify Rename Settings].



4 Specify the settings and click [Finish].



Placing a check mark here makes copies of images with new names.
The name of the original images will not be changed.



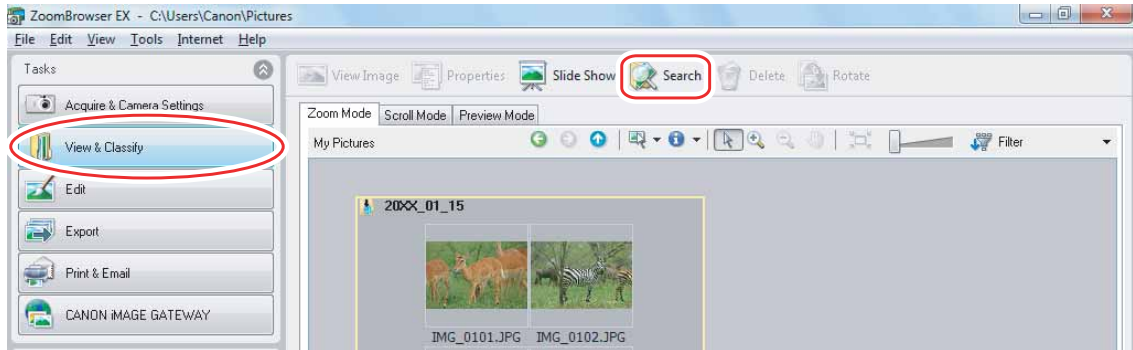
To rename a folder, select a folder, and open the [Rename Folder] window by selecting [Rename] from the [File] menu. Input the new name, and click [OK].

Searching for Images

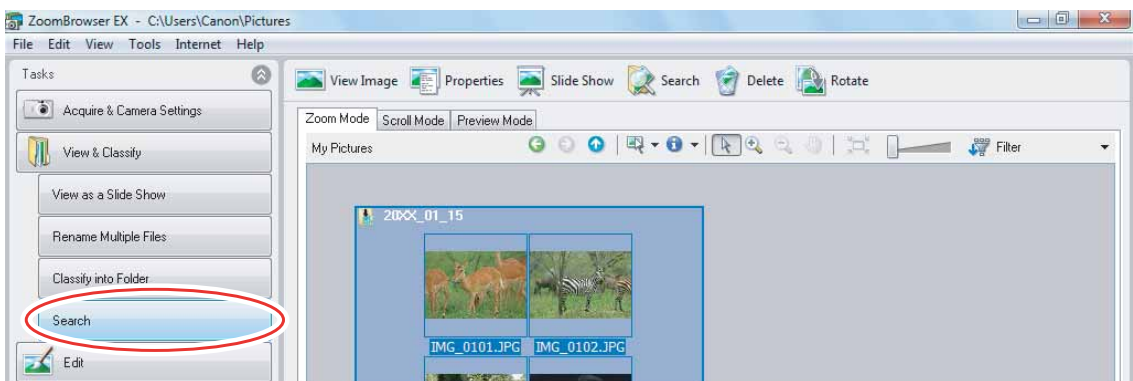
This task allows you to search for images by star rating, modification date, shooting date, comment or keywords.

1 Click [View & Classify] in the main window.

You can also search for images by clicking [Search] on the Application Tool Bar. Skip to step 3.

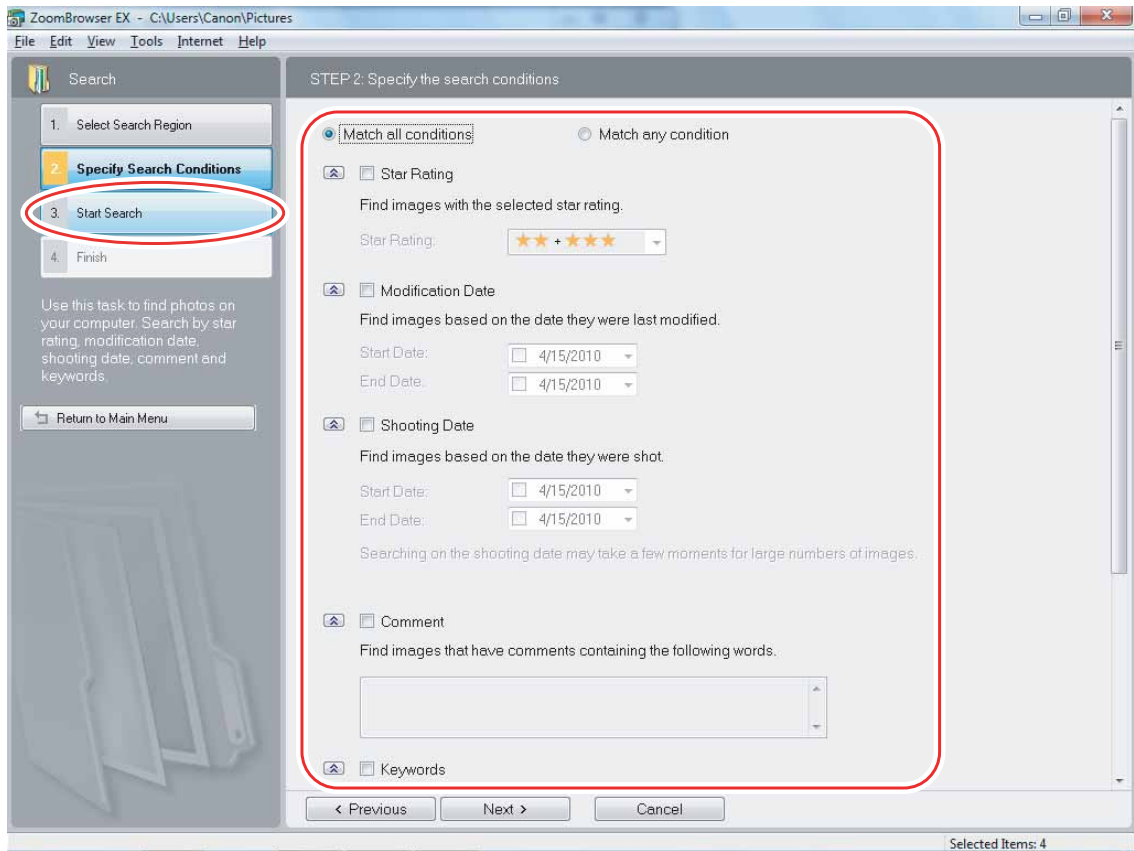


2 Select folders and images from which you wish to search and click [Search].



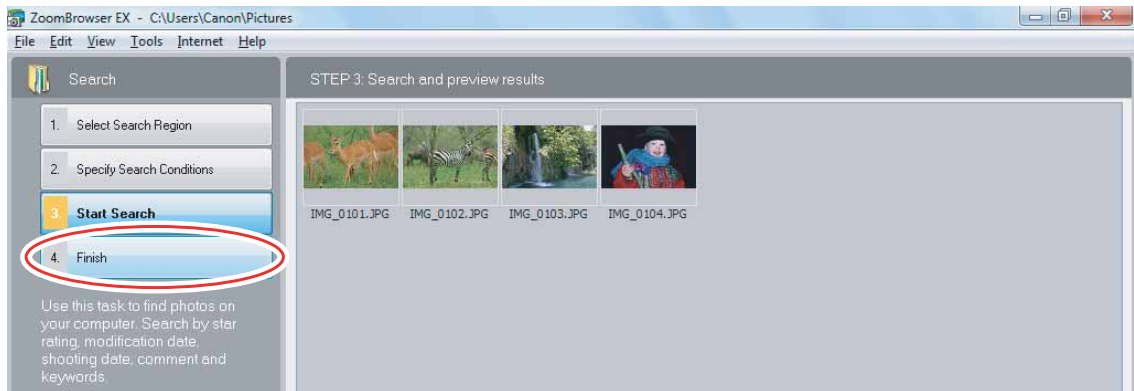
3 Specify the search conditions and click [Start Search].

- The search results are displayed as thumbnails.
- Select at least one search condition.



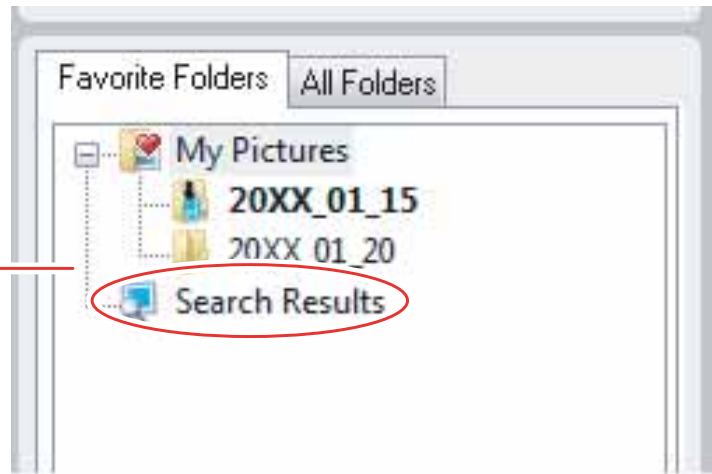
4 Click [Finish].

- To change the search parameters and perform another search, click [Specify Search Conditions] and repeat steps 3-4.



- The images of the search result are displayed in the [Search Results] folder. You can print or copy these images to another folder.

Folders Area



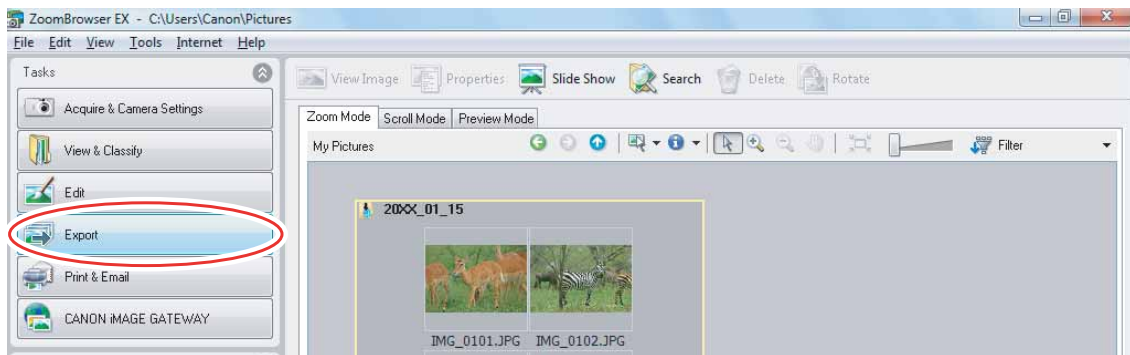
The searched images will remain in this folder until ZoomBrowser EX is closed or another search is performed, but if you delete an image in this folder, the corresponding original image will be deleted as well.

Exporting Images

You can change the data type for selected still images and movies and save them as new files. You can also export selected movies and still image properties to a text file or copy and rename movies and still images. Furthermore, you can export still images for use as a screen saver or a wallpaper.

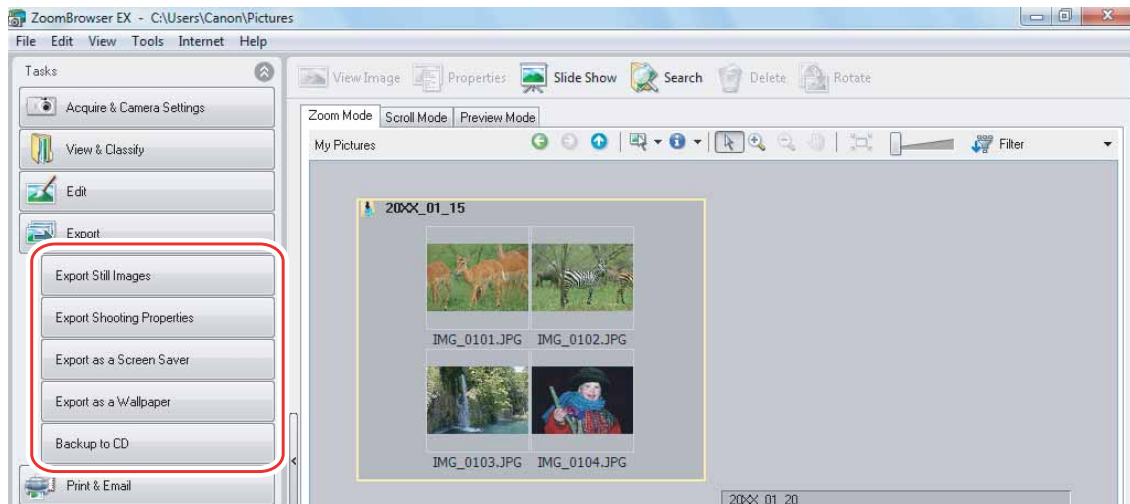
Changing the File Type and Saving

1 Click [Export] in the main window.

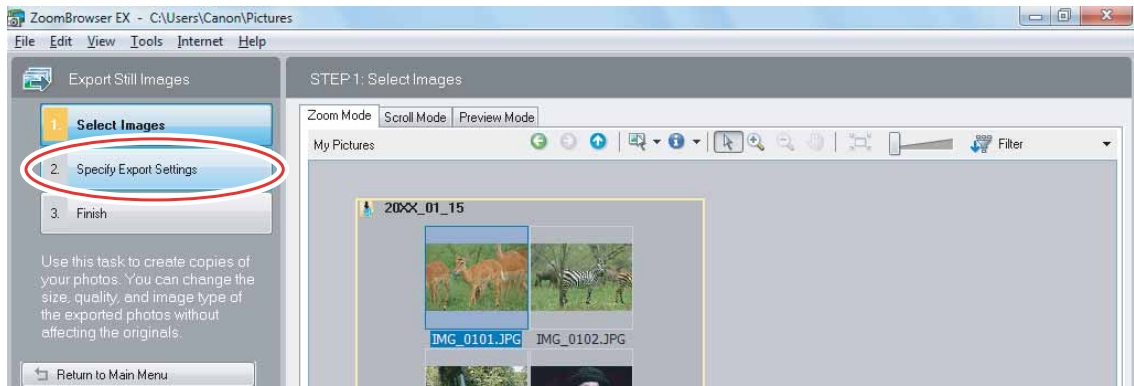


2 Select the export type.

If you selected [Backup to CD], refer to *Saving on CD-R/RW Discs* (53).



3 Select images and click [Specify Export Settings].



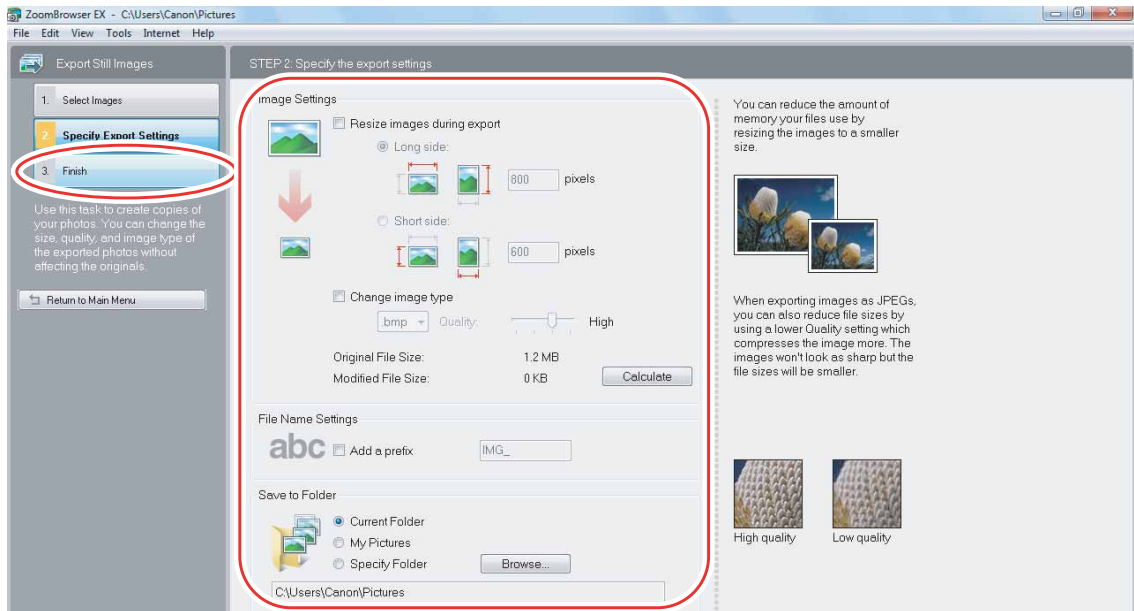
4 Specify the export settings and click [Finish].

The window varies depending on the selected export type in step 2.

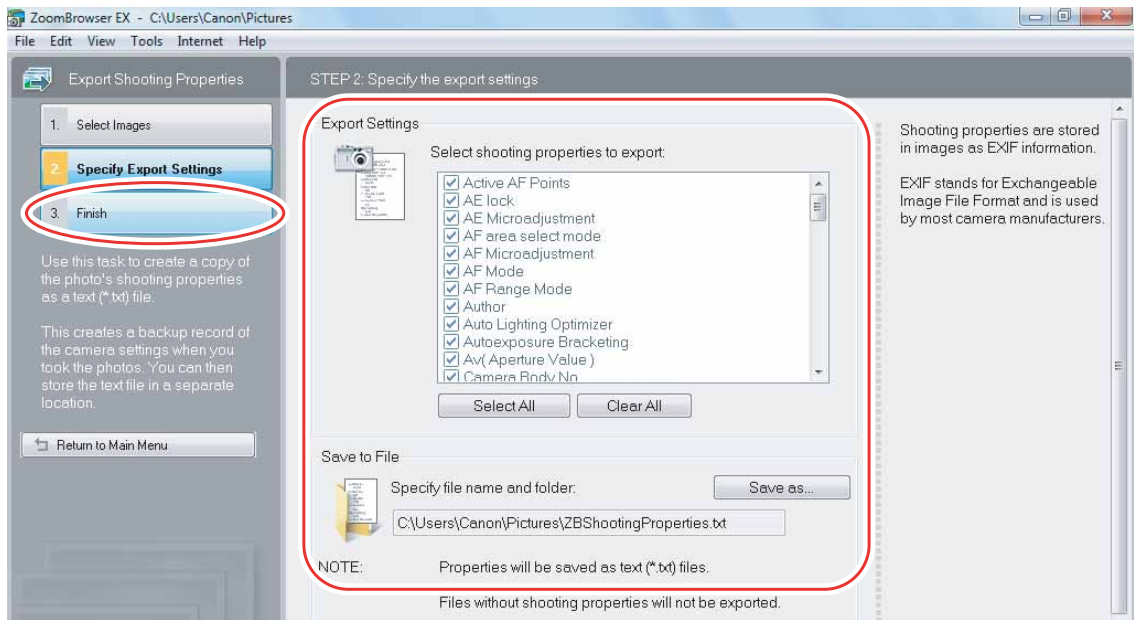
When you have selected [Export Still Images]:

You can convert still images to another file type, resize and save them as new files.

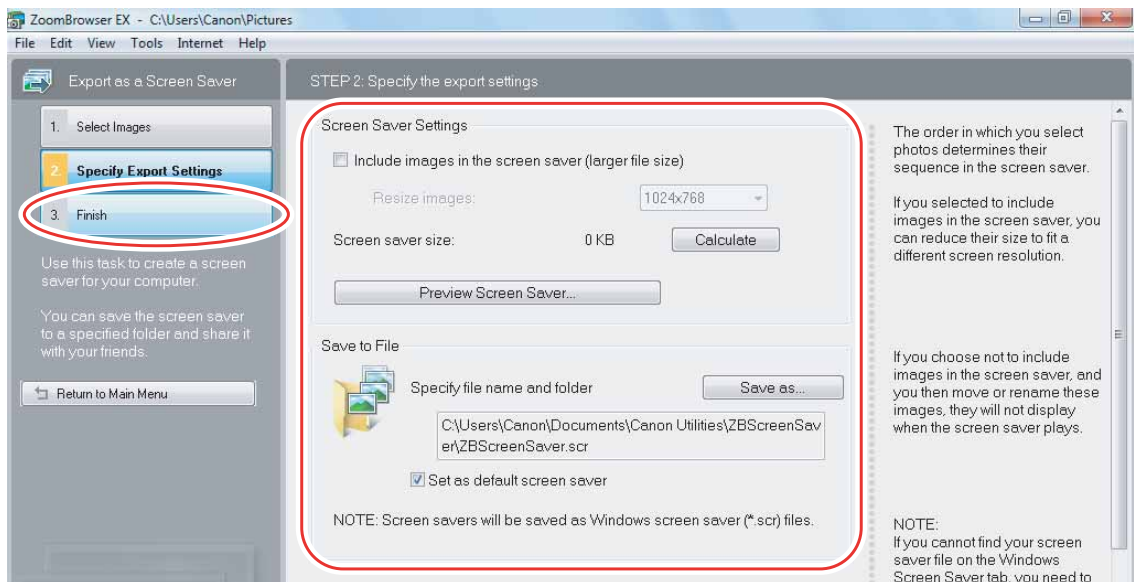
You can select the file type from BMP, JPEG and TIFF. You can also specify a prefix to be added to the exported still images.



When you have selected [Export Shooting Properties]:
You can select the information you wish to export and save as a text file.

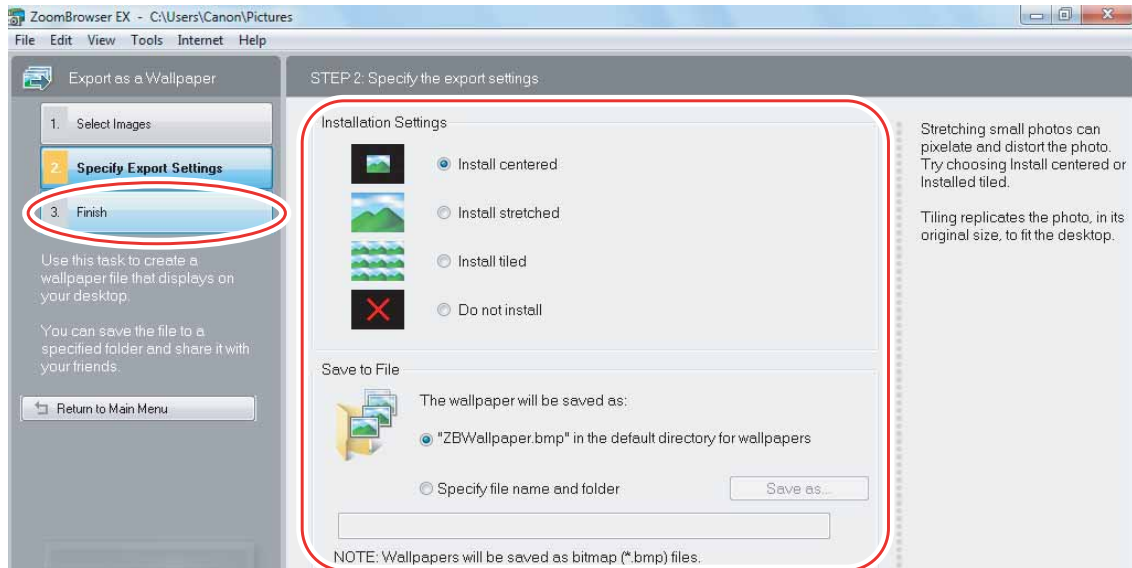


When you have selected [Export as a Screen Saver]:
You can export and save the image as a screen saver.



When you have selected [Export as a Wallpaper]:

You can export and save the image as Windows wallpaper. This task cannot be performed if you have selected multiple images.



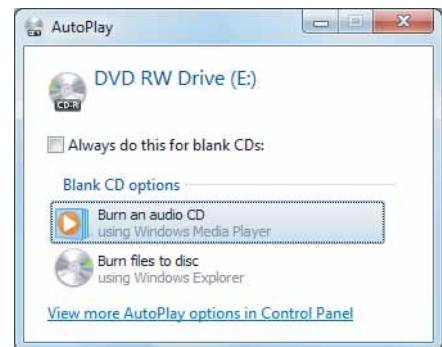
Saving on CD-R/RW Discs

You can copy and save images to CD-R or CD-RW discs. The shooting information is copied along with the images.

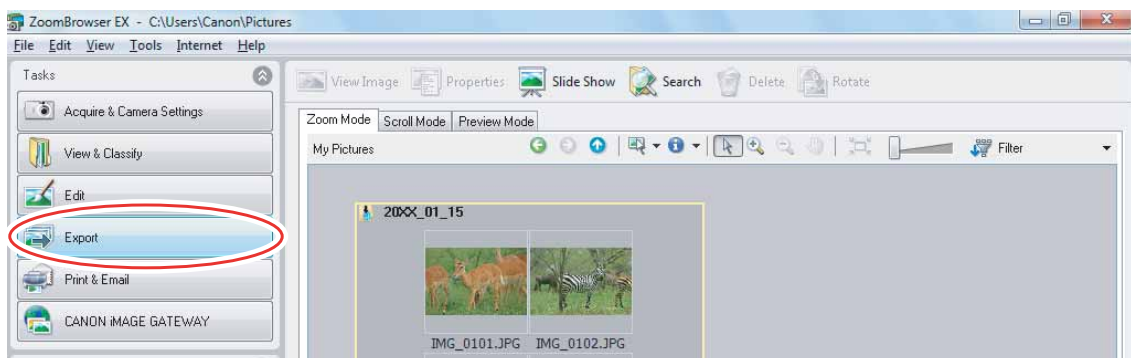


This function can only be used on a computer that came with a CD-R/RW drive as standard equipment.

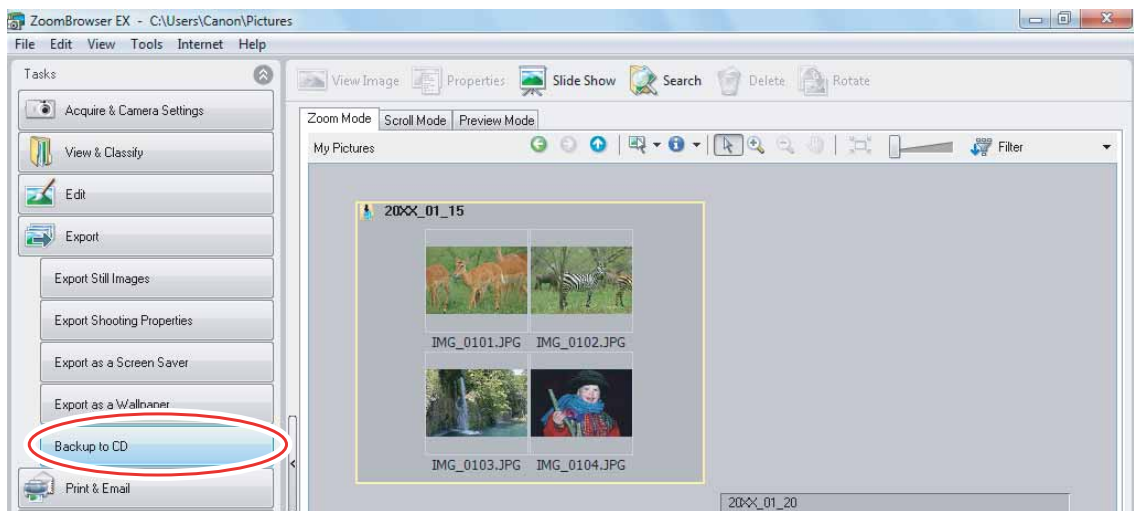
- 1 Place a CD-R/RW disc in the computer's CD-R/RW drive.**
- 2 If the following window appears, click [Cancel].**



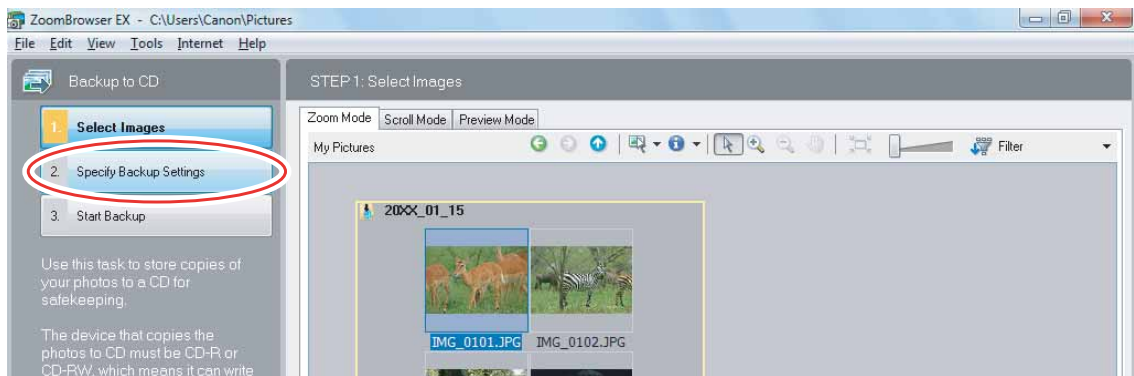
- 3 Click [Export] in the main window.**



4 Click [Backup to CD].

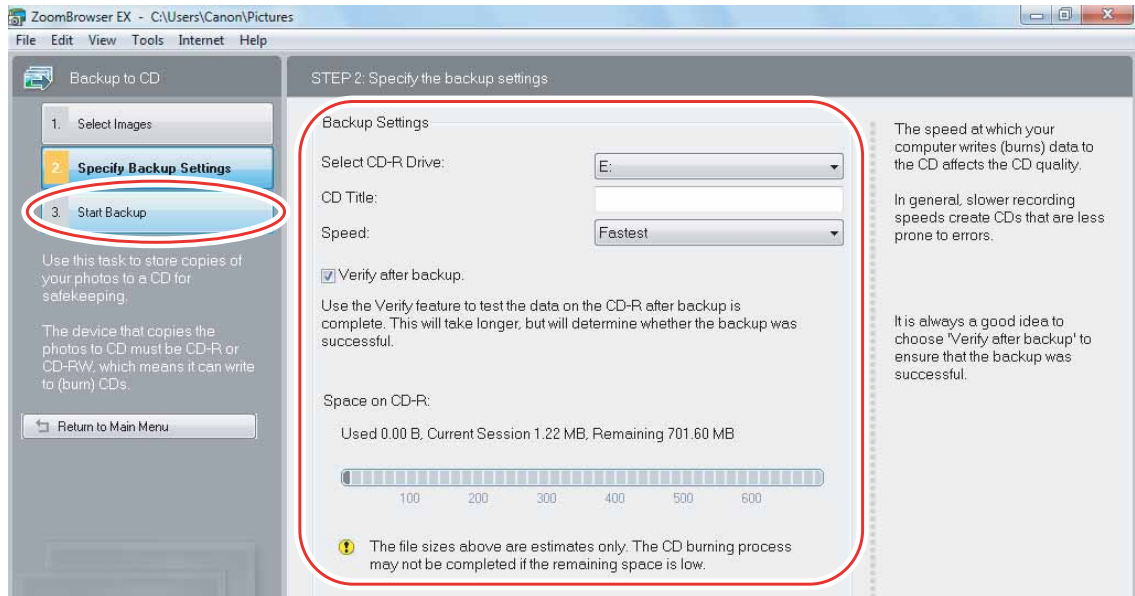


5 Select the folders or images you wish to save and click [Specify Backup Settings].



6 Set the backup settings and click [Start Backup].

The disc will be ejected from the drive when copying is complete.



You can add images to a CD-R/RW disc that already contains images.

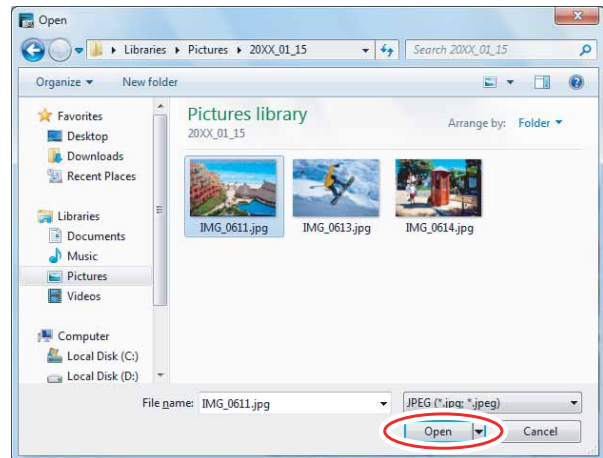
Uploading Still Images to the Camcorder

You can copy still images saved on the computer to the camcorder.

- 1 Connect the camcorder to the computer (25).**
The still images will be added to the memory selected for the playback of still images (built-in memory or memory card).
- 2 Click [Organize Images on Camera] ▶ [Organize Images] in the CameraWindow menu screen.**
- 3 Click [Upload].**



- 4 Select the still images you wish to save and click [Open].**



- If the camcorder is already connected to the computer and the main window of ZoomBrowser EX is displayed (immediately after download, for example), you can start CameraWindow and display the CameraWindow menu screen by clicking the [Acquire & Camera Settings] task button followed by [Connect to Camera].

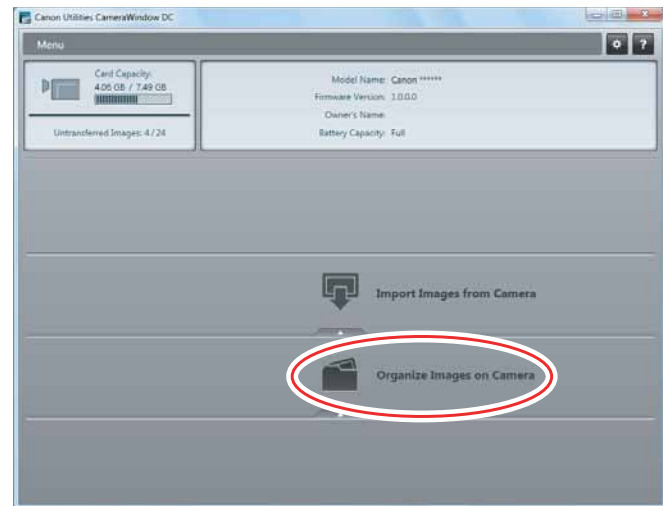


When you upload images edited with another application, image properties may be lost.

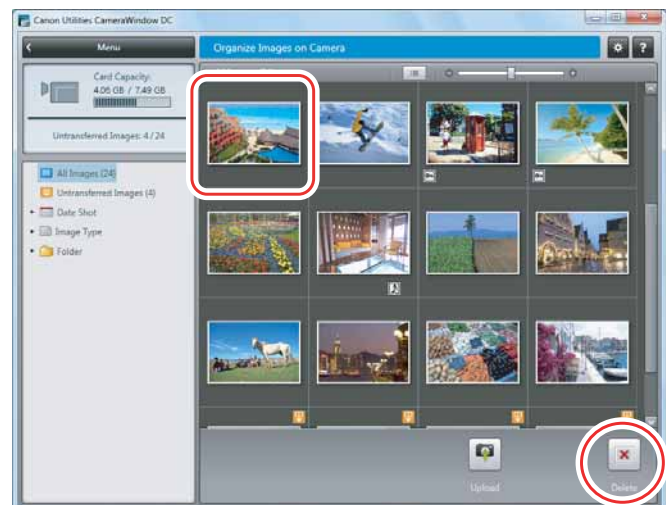
Deleting Still Images on the Camcorder

■ Organizing Images on the Camcorder

- 1 Click [Organize Images on Camera] ▶ [Organize Images] in the CameraWindow menu screen.



- 2 Click the still image you want to delete, and click [Delete].
 - Still images cannot be restored once they are deleted.

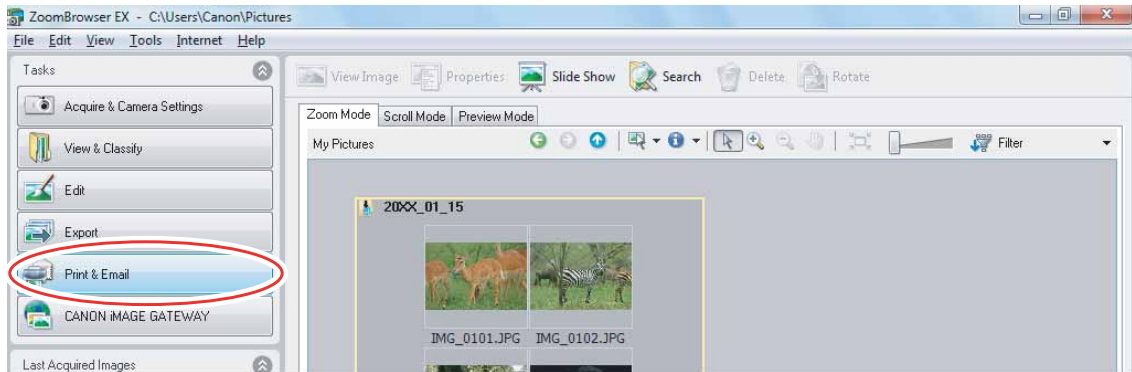


Using Various Functions

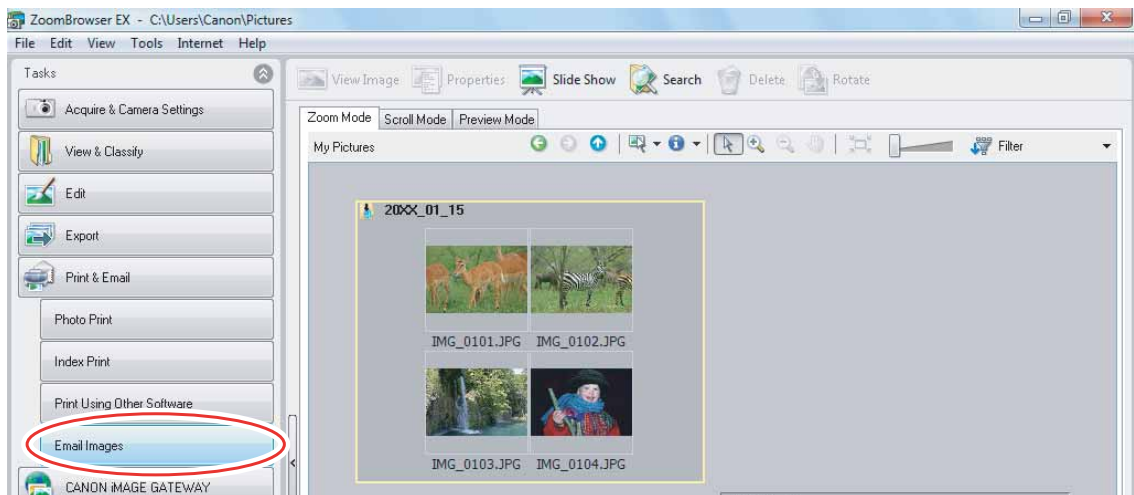
Attaching Still Images to E-mail Messages

You can attach selected still images to an e-mail message. If necessary, you can make the image file size smaller.

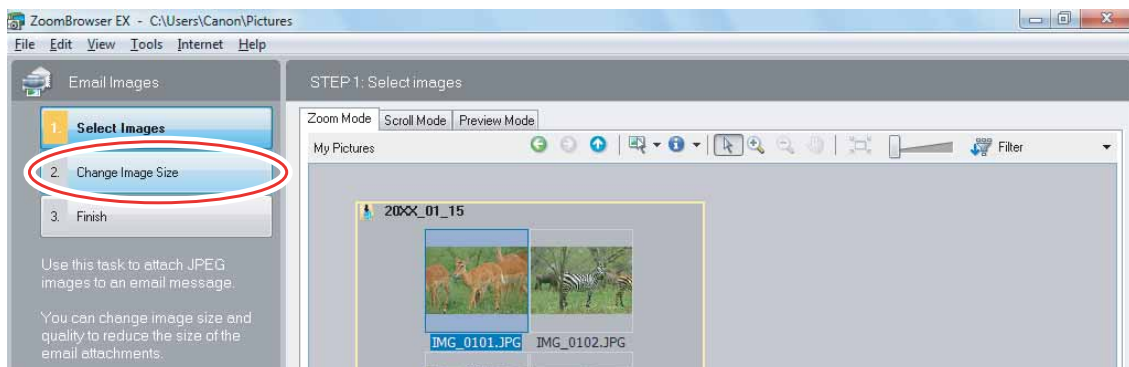
1 Click [Print & Email] in the main window.



2 Click [Email Images].

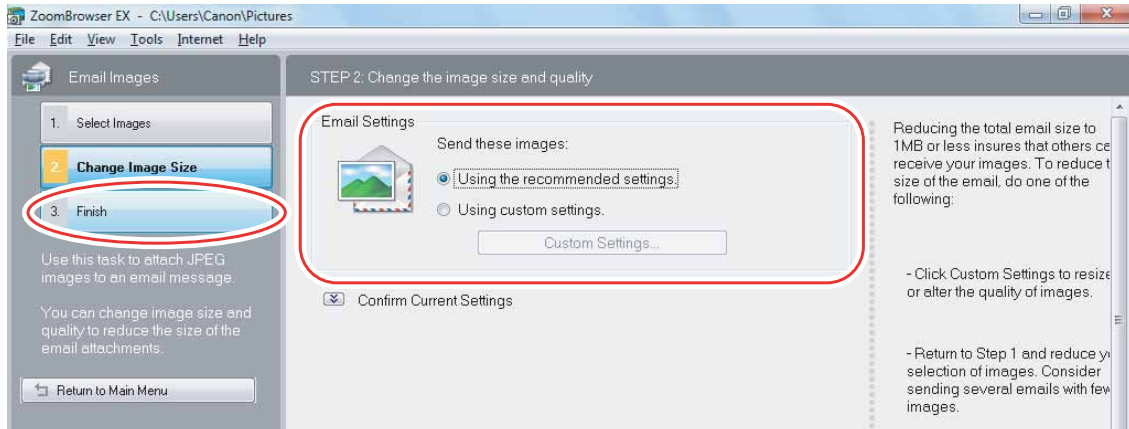


3 Select the still images you wish to send and click [Change Image Size].

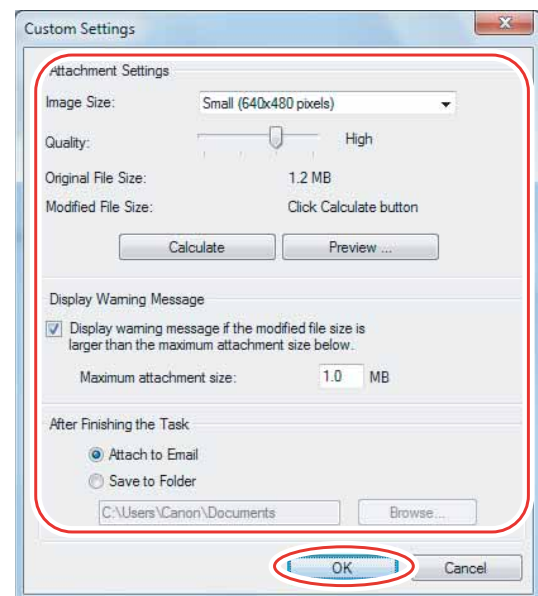


4 Select image size and quality, and click [Finish].

- If you selected [Using the recommended settings.], your e-mail software starts and the selected still images appear as an attachment in the message window. Input address, subject and your comments and send the message.
- E-mail software not supporting MAPI does not start automatically. In this case, select [Save to Folder] in the [Custom Settings] screen and select a destination folder for the still images.



- If you select [Using custom settings.], change the settings in [Custom Settings] and click [OK].



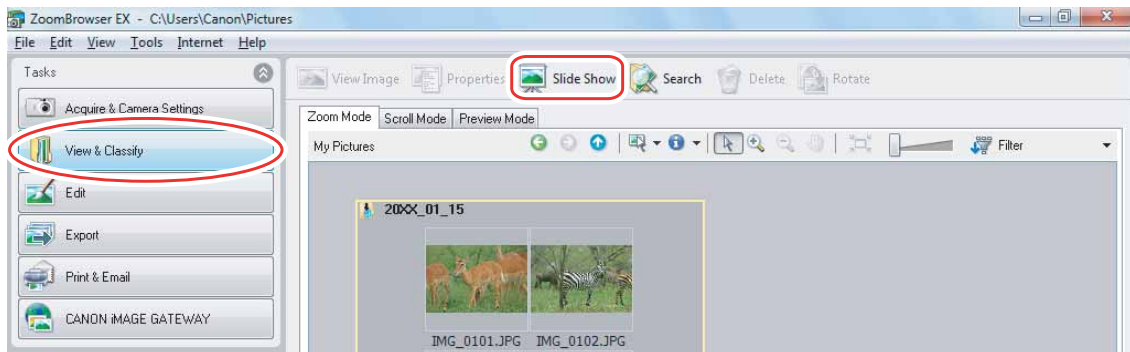
- To use this function, the e-mail software must be enabled as MAPI client. For details, refer to the instruction manual of the e-mail software.
- This function uses the e-mail software configured in [Internet Options]. To change the software, first exit ZoomBrowser EX. Next, in Internet Explorer, select [Tools], [Internet Options] and the [Programs] tab. Set the desired software in [E-mail] and click [OK]. (This procedure may change depending on your Web browser.)

Running a Slide Show

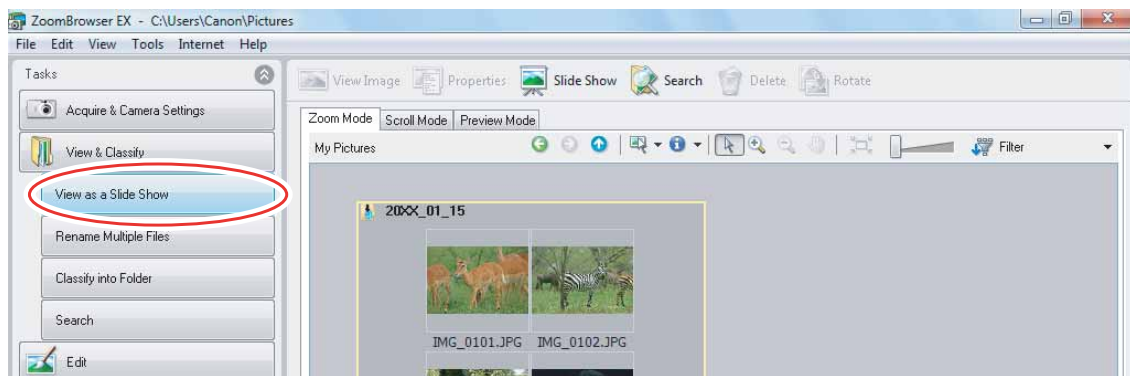
You can view selected still images in a slide show.

1 Click [View & Classify] in the main window.

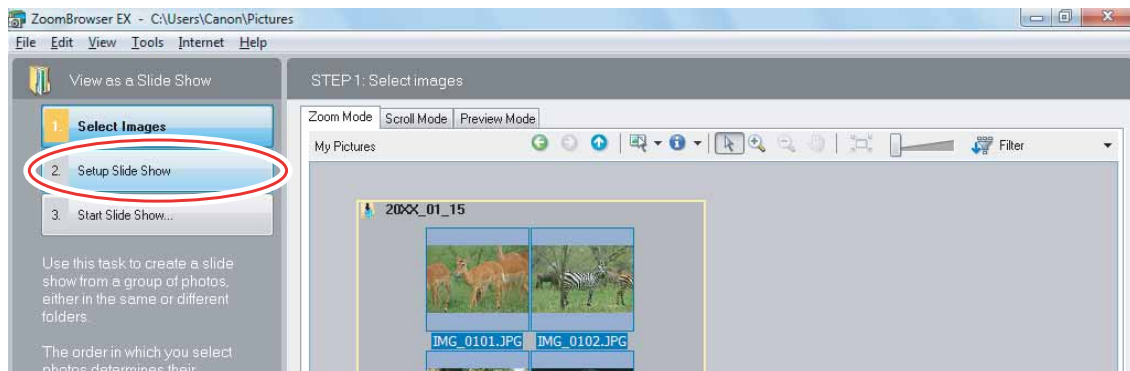
You can also view a slide show by clicking [Slide Show] on the Application Tool Bar. Skip to step 4.



2 Click [View as a Slide Show].

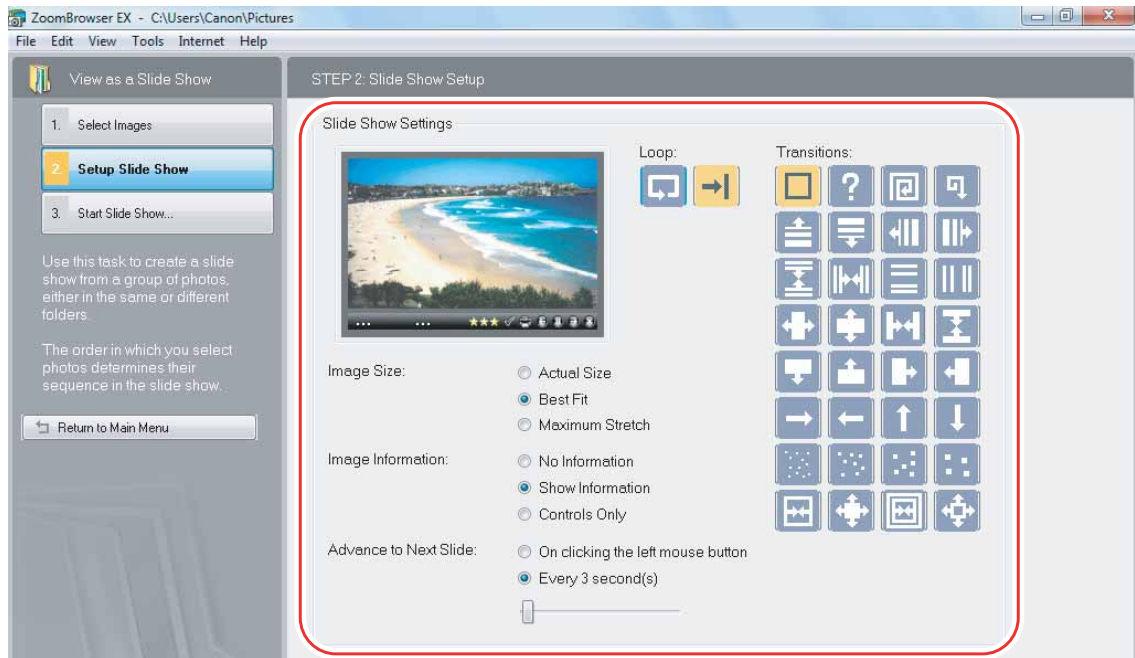


3 Select the images and click [Setup Slide Show].



4 Select the slide show settings.

- [Image Size]: Select the size of the still images.
- [Image Information]: Select to show image information such as file name or title.
- [Advance to Next Slide]: Select to advance manually or automatically. When you select “Every 3 second(s)”, you can select the interval in the control below (from 1 to 120 seconds).
- [Loop]: Select to stop the slide show after the last image or to continuously run it in a loop.
- [Transitions]: Select the transition effect to be used when moving from one slide to another. When you click an effect, you can check the effect in the preview window.



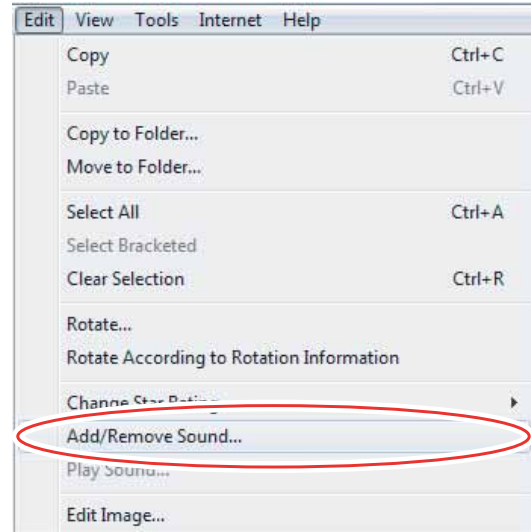
5 Click [Start Slide Show].

Click  in the lower right corner to end the slide show.

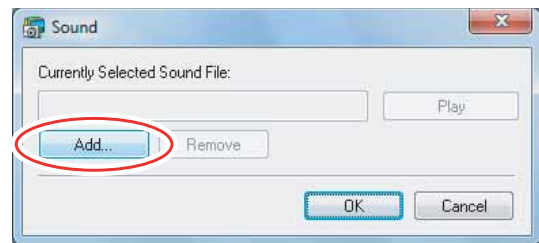
Adding Sound to a Still Image

- You can add a sound to an image. The sound file that can be added to the image must be WAVE type (extension “.wav”).
- The sound cannot be played back on the camcorder.

1 In the main window, select an image and select [Add/Remove Sound] from the [Edit] menu.



2 Click [Add].




3 Select the sound file and click [Open].

4 Click [OK].


- The sound file will be copied to the same folder as the image.
- To play back the sound, select an image with a sound icon and select [Play Sound] from the [Edit] menu.

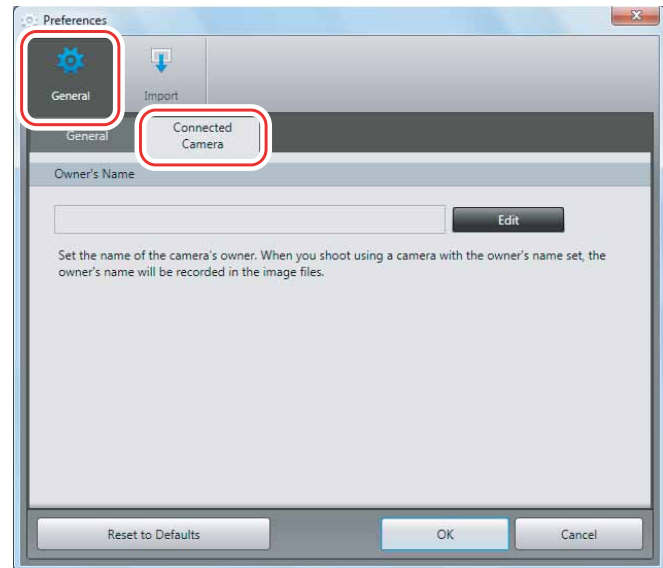


- To remove sound from an image, select [Remove] on the Sound window in step 2.  disappears and the copied sound file will be deleted.
- The [Play Sound] window appears and plays back the sound.

Reviewing and Changing the Owner Name of the Camcorder

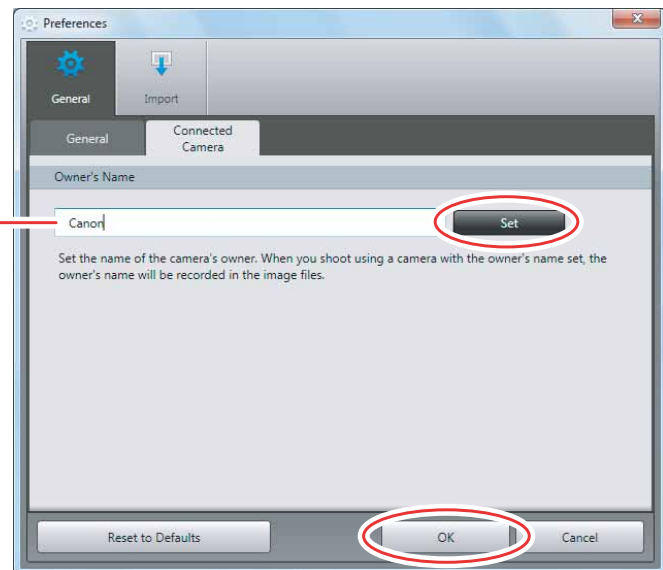
You can change and confirm the owner's name of the camcorder.

- 1** Connect the camcorder to the computer (📖 25).
- 2** Click [ Preferences] in the CameraWindow menu screen.
- 3** Click the [General] tab, and then click the [Connected Camera] tab.



- 4** Click [Edit] and enter the camcorder's owner's name and click [Set] ▶ [OK].

Input the camcorder's owner's name here (up to 31 characters).



Uninstalling the Software

Uninstall the software when you wish to delete it from your computer or when reinstallation is required to fix corrupted files.



You must have authorization as a Computer System Administrator to uninstall programs.

Uninstalling ZoomBrowser EX

Other programs in the [Canon Utilities] folder can also be uninstalled in the same way.

- 1 Click the Windows [start] menu and select [All Programs] ▶ [Canon Utilities] ▶ [ZoomBrowser EX] and [ZoomBrowser EX Uninstall].



- Uninstall also [Canon Internet Library for ZoomBrowser EX] when you have uninstalled ZoomBrowser EX:
 - 1) Windows 7 / Windows Vista: Open the Start menu and select [Control Panel] and [Uninstall a program].
Windows XP: Open the [start] menu and select [Control Panel] and [Add or Remove Programs].
 - 2) Select [Canon Internet Library for ZoomBrowser EX] and click [Uninstall/Change] or [Change/Remove].

Connection

- ? Camcorder is not recognized when connected to the computer.**
 - ➔ **There is no memory card in the camcorder.**
Insert a memory card into the camcorder.
 - ➔ **The camcorder is not set to the correct mode.**
Set the camcorder to still image playback mode.
 - ➔ **Camcorder is not correctly connected to the computer.**
Read *Connecting the Camcorder to a Computer* (📖 25) and check the connection.
Ensure that you are using the correct cable and that its connectors are in good shape.
 - ➔ **If you are experiencing operational problems, detach the USB cable from the camcorder and computer and terminate the connection. Restart the computer and then reconnect the camcorder.**

ZoomBrowser EX Operation

- ? Cannot download still images.**
 - ➔ **The camcorder is not set to the correct mode.**
Set the camcorder to still image playback mode.
- ? Image files or folders do not appear in ZoomBrowser EX.**
 - ➔ **Images or folders shown in ZoomBrowser EX and the actual file contents may be different when an image file has been moved or copied using Windows functions or edited with a separate program.**
Click the [View] menu and select [Refresh Current Folder].



CANON INC.

U.S.A. ————— Canon U.S.A., Inc.

Canon Customer Care Center

Tel (US): 1-800-828-4040

(Mon.-Fri., 9 AM to 8 PM Eastern Time)

CANADA ————— Canon CANADA Inc.

Tel (Canada): 1-800-OK-CANON (1-800-652-2666)

ASIA ————— Canon Hongkong Co., Ltd.

19/F., The Metropolis Tower, 10 Metropolis Drive,
Hung Hom, Kowloon, Hong Kong

Tel: 852-3191-2333

Fax: 852-2428-3963

The information in this manual is verified as of 1 June 2010.