

<For Macintosh Users>

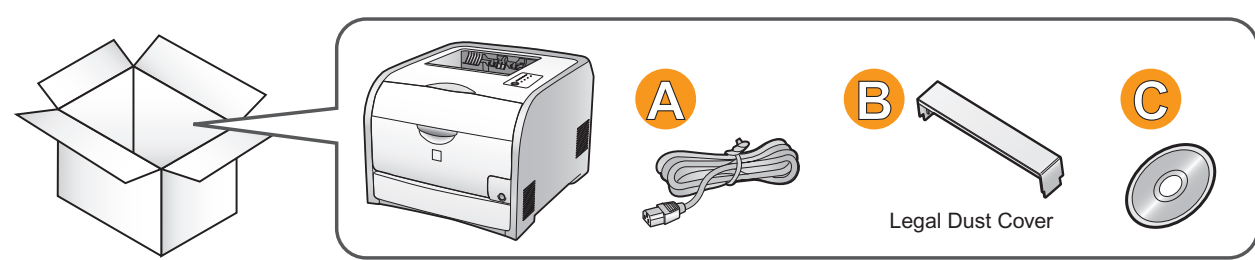
This guide describes how to set up the printer in the Windows environment as examples. To view how to use printer drivers or utilities for Macintosh, see the "Online Manual" (HTML manual). For handling the printer or maintenance methods etc, see the "User's Guide" (HTML manual).

Displaying the "Online Manual"

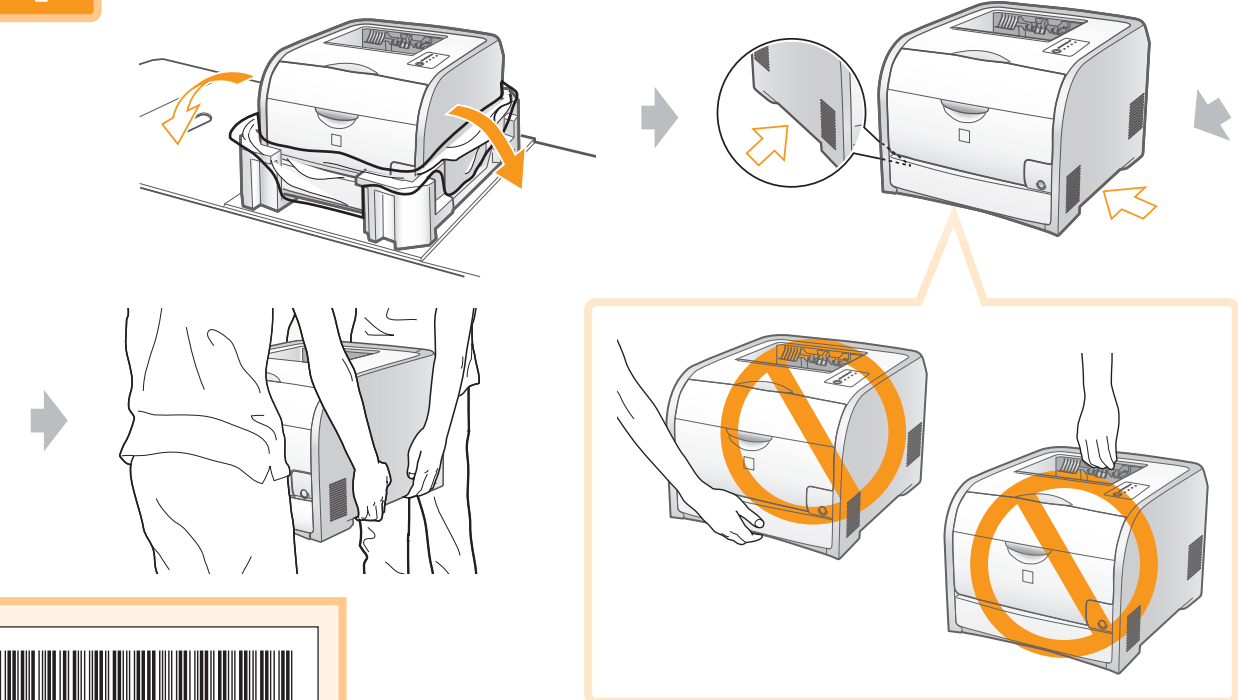
Double-click [index.html] in the [CAPT] - [us_eng] - [Documents] - [GUIDE-CAPT-US] folder in the supplied CD-ROM.

Displaying the "E-Manual"

Double-click [index.html] in the [Manuals] - [Source] folder in the supplied CD-ROM.



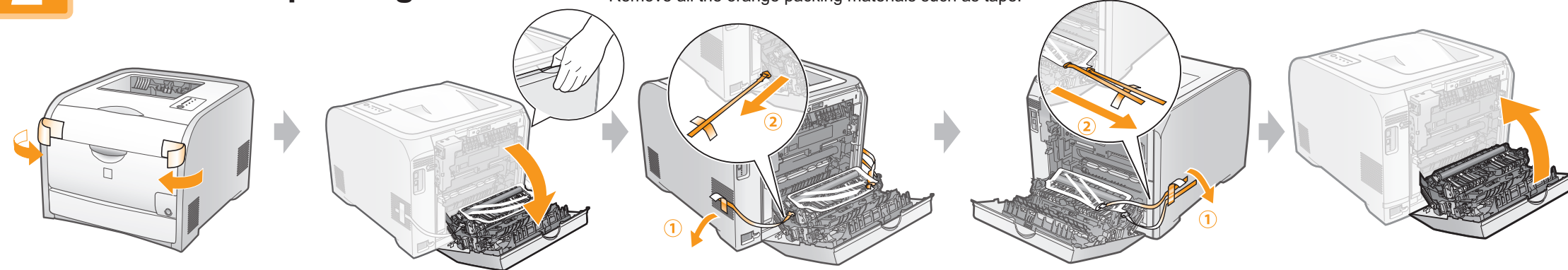
1 Carry the printer



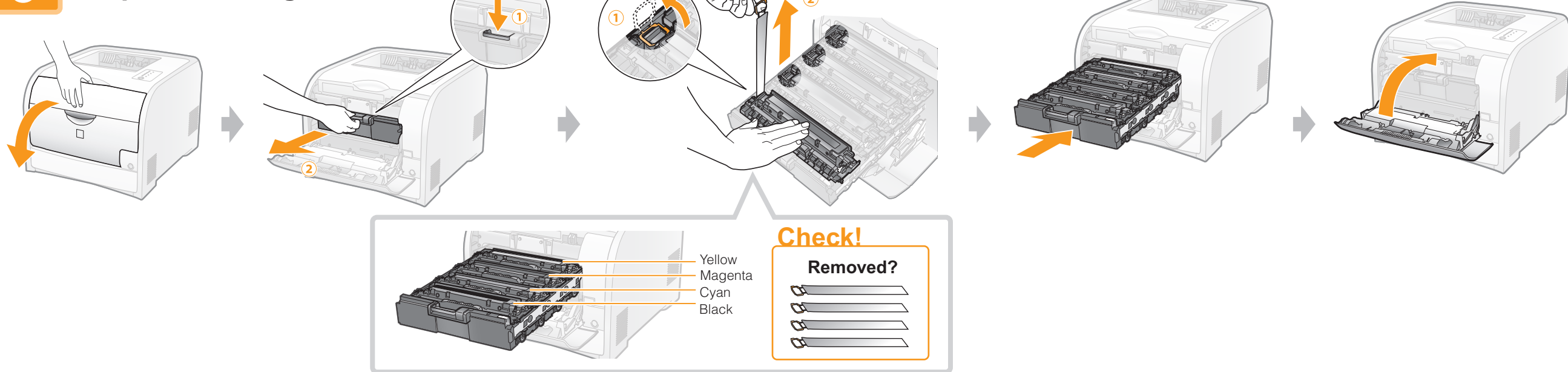
RT5-0737 (000) XXXXXXXXXX © CANON INC. 2011 PRINTED IN CHINA

2 Remove the packing materials

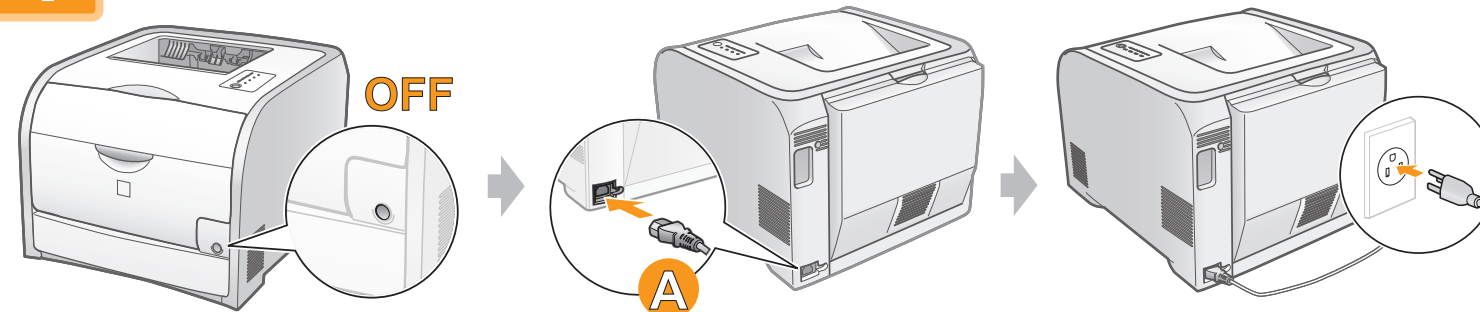
* The packing materials may be changed in form or placement, or may be added or removed without notice. Remove all the orange packing materials such as tape.



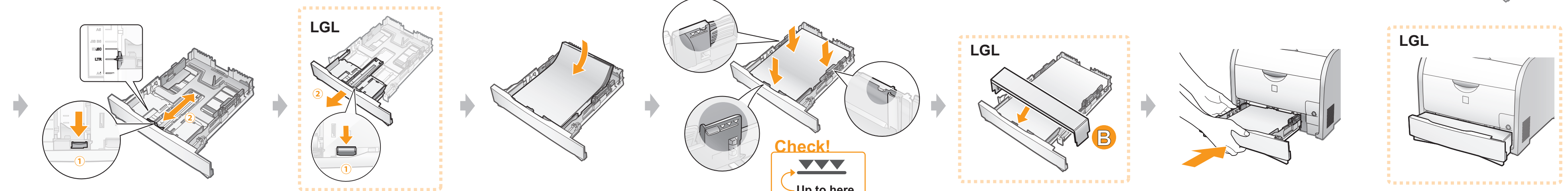
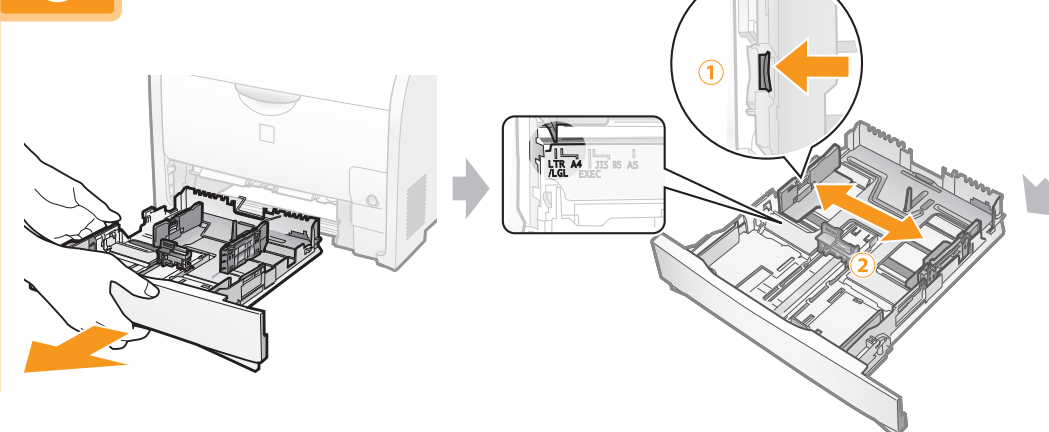
3 Prepare cartridges



4 Connect the power cord



5 Load paper

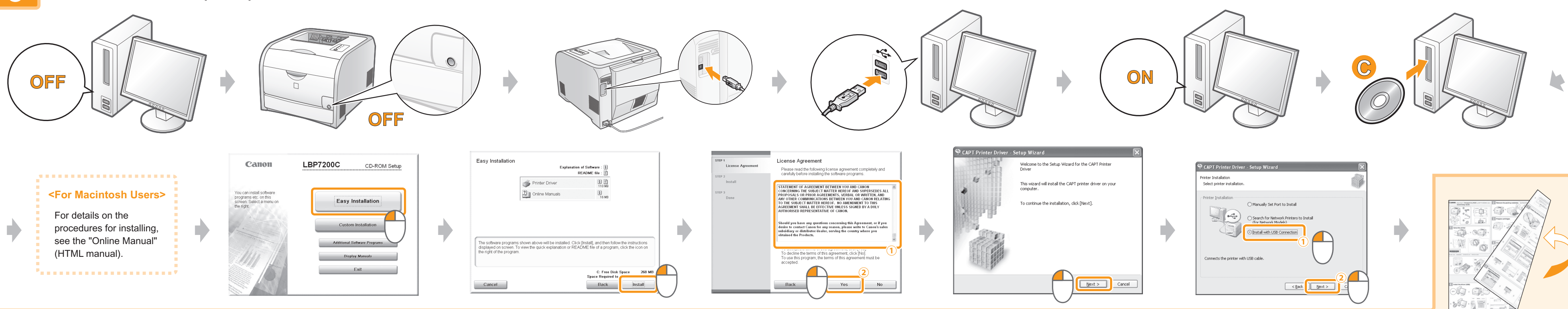


6 Using a USB Cable

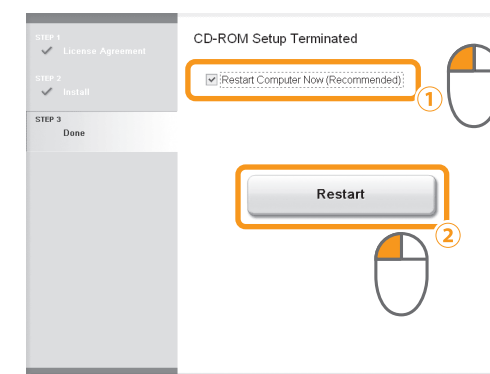
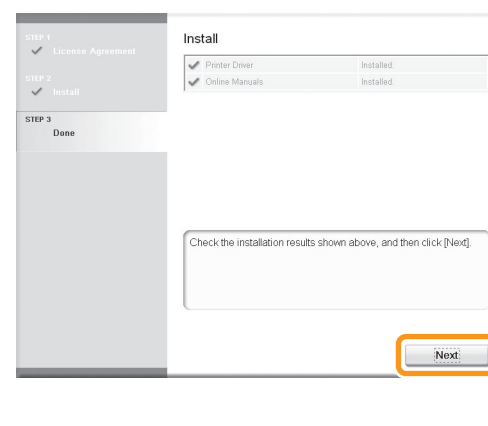
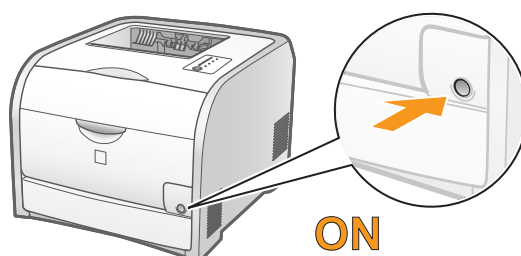
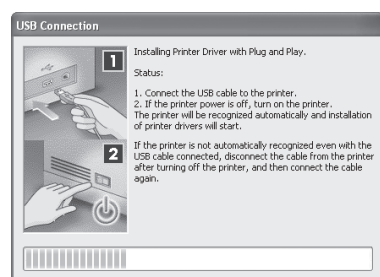
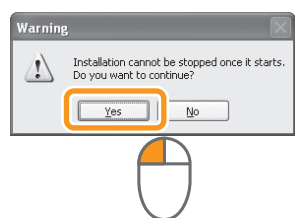
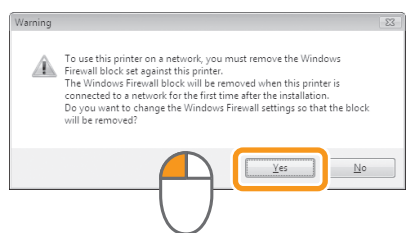
Connecting method?

7 Using a LAN (Ethernet) Cable

6 Install the driver (USB)



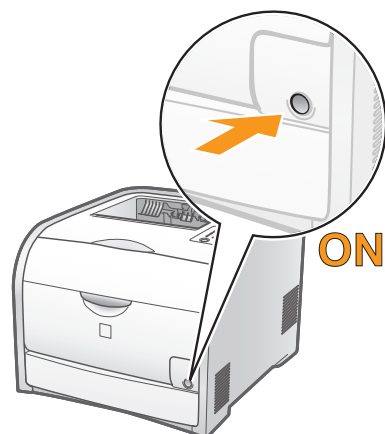
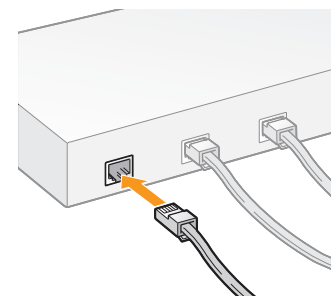
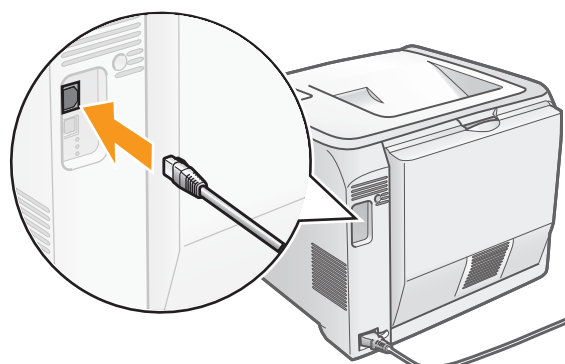
Windows Vista/Server 2008



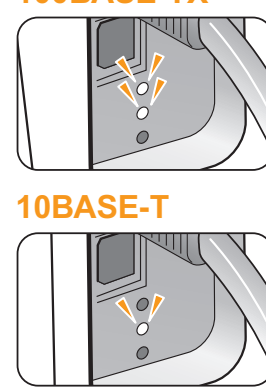
8

Register a paper size

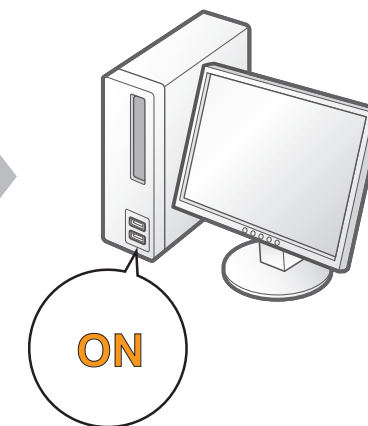
7 Install the driver (LAN)



100BASE-TX

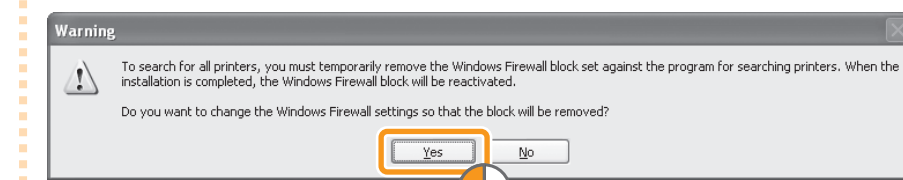
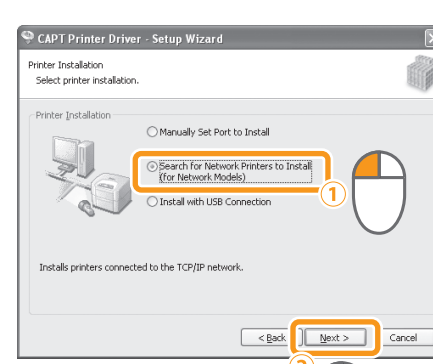
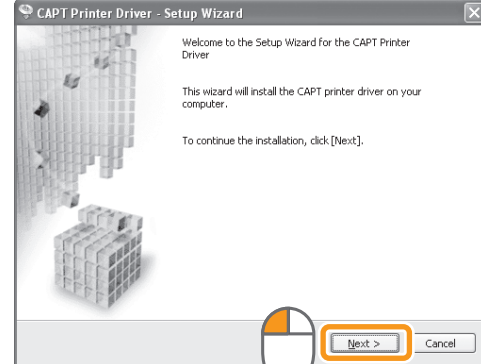
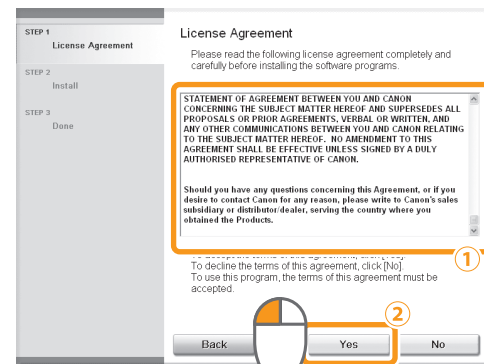
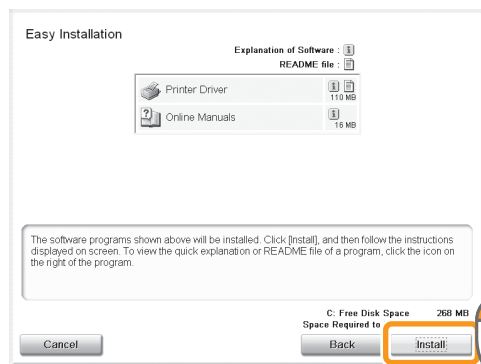


10BASE-T

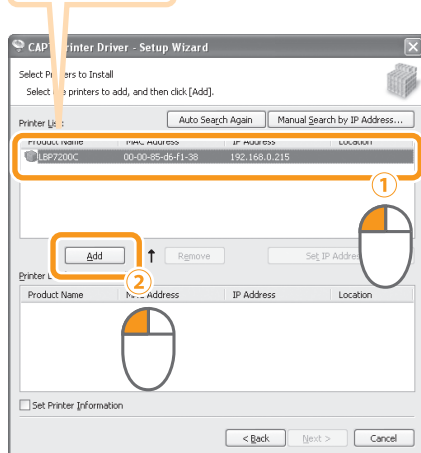


<For Macintosh Users>

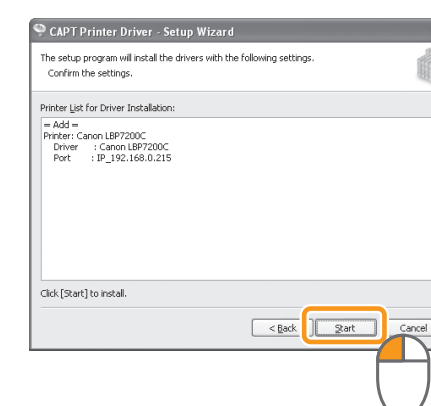
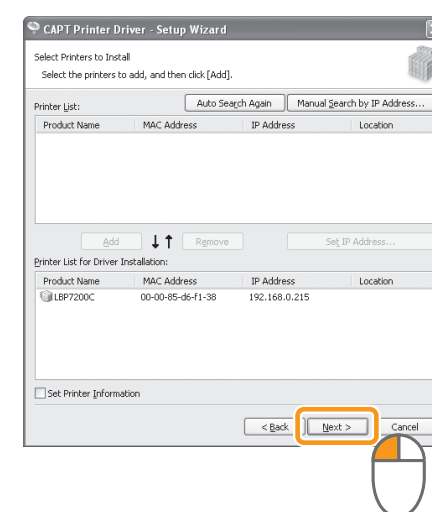
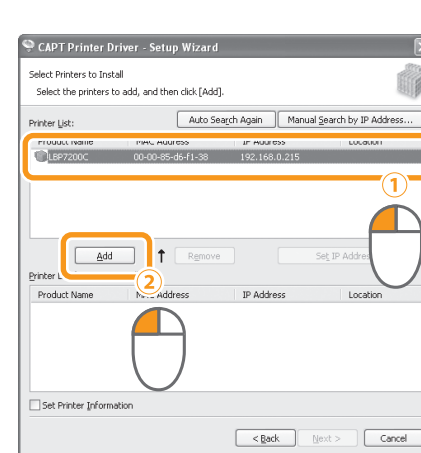
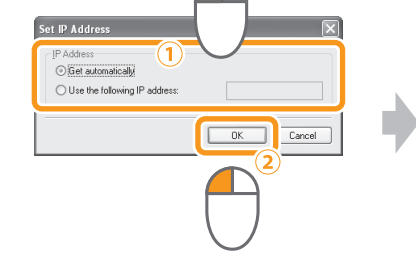
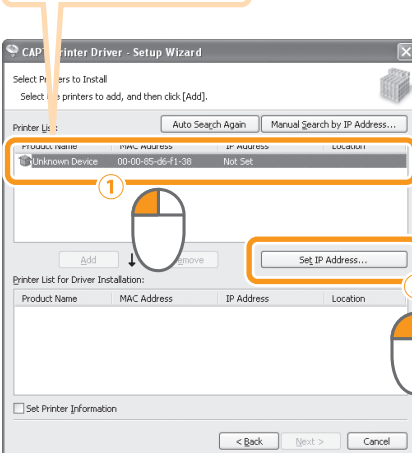
For details on the procedures for installing, see the "Online Manual" (HTML manual).



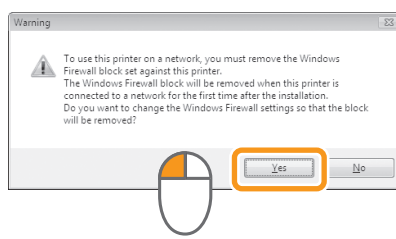
LBP7200C



Unknown Device



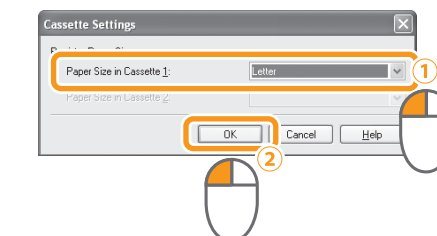
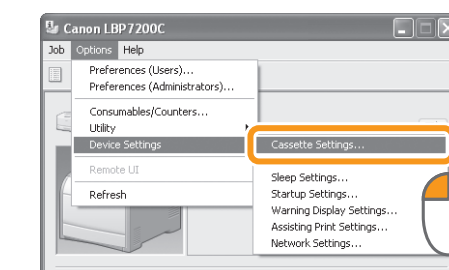
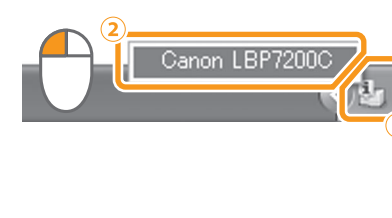
Windows Vista/Server 2008



8

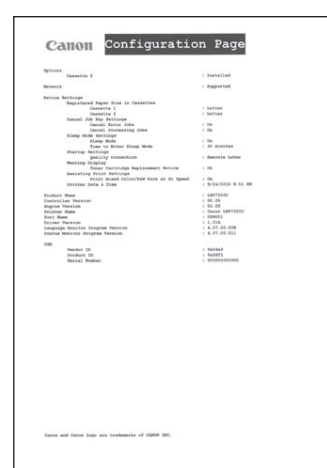
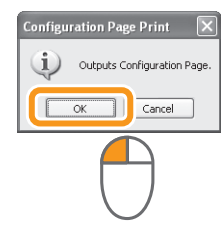
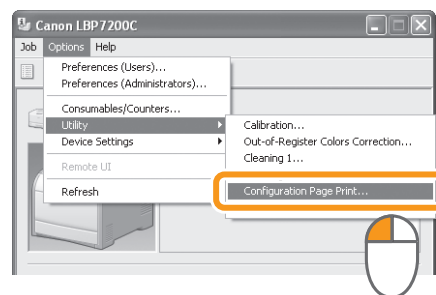
Register a paper size

* If you are using Macintosh, see the "Online Manual" (HTML manual).



9 Check the operation

* You can check the operation only when using Windows.



Setup finished

10

Next, see the User's Guide

* If you are using Macintosh, double-click [index.html] in the [CAPT] - [us_eng] - [Documents] - [GUIDE-CAPT-US] folder in the supplied CD-ROM.

