



# Online Manual

Device Management Console Guide

# Contents

Symbols Used in This Document. . . . .	3
Touch-enabled Device Users (Windows). . . . .	4
Trademarks and Licenses. . . . .	5
Device Management Console Guide. . . . .	19
General Notes (Device Management Console). . . . .	20
The Features of Device Management Console. . . . .	21
Starting Device Management Console. . . . .	22
Registering Printer. . . . .	23
Deleting Printer. . . . .	27
Checking Printer Status. . . . .	30
Managing Printer Colors. . . . .	33
Checking Color Calibration Execution Status. . . . .	34
Checking Calibration Link. . . . .	39
Performing Color Calibration. . . . .	42
Description of Device Management Console Screen. . . . .	47
Main Screen. . . . .	48
Main Screen (Menu Bar). . . . .	50
Main Screen (Printer Status Sheet). . . . .	53
Main Screen (Calibration Sheet). . . . .	55
Printer Management Dialog Box. . . . .	59
Add Printer Dialog Box. . . . .	61
Printer Details Dialog Box. . . . .	63
Paper Status Dialog Box. . . . .	65
Calibration Dialog Box. . . . .	66
Calibration Monitor Dialog Box. . . . .	68

## Symbols Used in This Document

### **Warning**

Instructions that, if ignored, could result in death or serious personal injury caused by incorrect operation of the equipment. These must be observed for safe operation.

### **Caution**

Instructions that, if ignored, could result in personal injury or material damage caused by incorrect operation of the equipment. These must be observed for safe operation.

### **Important**

Instructions including important information. To avoid damage and injury or improper use of the product, be sure to read these indications.

### **Note**

Instructions including notes for operation and additional explanations.

### **Basics**

Instructions explaining basic operations of your product.

### **Note**

- Icons may vary depending on your product.

## **Touch-enabled Device Users (Windows)**

For touch actions, you need to replace "right-click" in this document with the action set on the operating system. For example, if the action is set to "press and hold" on your operating system, replace "right-click" with "press and hold."

## Trademarks and Licenses

- Microsoft is a registered trademark of Microsoft Corporation.
- Windows is a trademark or registered trademark of Microsoft Corporation in the U.S. and/or other countries.
- Windows Vista is a trademark or registered trademark of Microsoft Corporation in the U.S. and/or other countries.
- Internet Explorer is a trademark or registered trademark of Microsoft Corporation in the U.S. and/or other countries.
- Mac, Mac OS, macOS, OS X, AirPort, App Store, AirPrint, the AirPrint logo, Safari, Bonjour, iPad, iPhone and iPod touch are trademarks of Apple Inc., registered in the U.S. and other countries.
- IOS is a trademark or registered trademark of Cisco in the U.S. and other countries and is used under license.
- Google Cloud Print, Google Chrome, Chrome OS, Chromebook, Android, Google Play, Google Drive, Google Apps and Google Analytics are either registered trademarks or trademarks of Google Inc.
- Adobe, Acrobat, Flash, Photoshop, Photoshop Elements, Lightroom, Adobe RGB and Adobe RGB (1998) are either registered trademarks or trademarks of Adobe Systems Incorporated in the United States and/or other countries.
- Bluetooth is a trademark of Bluetooth SIG, Inc., U.S.A. and licensed to Canon Inc.
- Autodesk and AutoCAD are registered trademarks or trademarks of Autodesk, Inc., and/or its subsidiaries and/or affiliates in the USA and/or other countries.

### ►►► Note

- The formal name of Windows Vista is Microsoft Windows Vista operating system.

Copyright (c) 2003-2015 Apple Inc. All rights reserved.

Redistribution and use in source and binary forms, with or without modification, are permitted provided that the following conditions are met:

1. Redistributions of source code must retain the above copyright notice, this list of conditions and the following disclaimer.
2. Redistributions in binary form must reproduce the above copyright notice, this list of conditions and the following disclaimer in the documentation and/or other materials provided with the distribution.
3. Neither the name of Apple Inc. ("Apple") nor the names of its contributors may be used to endorse or promote products derived from this software without specific prior written permission.

THIS SOFTWARE IS PROVIDED BY APPLE AND ITS CONTRIBUTORS "AS IS" AND ANY EXPRESS OR IMPLIED WARRANTIES, INCLUDING, BUT NOT LIMITED TO, THE IMPLIED WARRANTIES OF MERCHANTABILITY AND FITNESS FOR A PARTICULAR PURPOSE ARE DISCLAIMED. IN NO EVENT SHALL APPLE OR ITS CONTRIBUTORS BE LIABLE FOR ANY DIRECT, INDIRECT, INCIDENTAL, SPECIAL, EXEMPLARY, OR CONSEQUENTIAL DAMAGES (INCLUDING, BUT NOT LIMITED TO, PROCUREMENT OF SUBSTITUTE GOODS OR SERVICES; LOSS OF USE, DATA, OR PROFITS; OR BUSINESS INTERRUPTION) HOWEVER CAUSED AND ON ANY THEORY OF LIABILITY, WHETHER IN CONTRACT, STRICT LIABILITY, OR TORT (INCLUDING NEGLIGENCE OR OTHERWISE) ARISING IN ANY WAY OUT OF THE USE OF THIS SOFTWARE, EVEN IF ADVISED OF THE POSSIBILITY OF SUCH DAMAGE.

Apache License

## TERMS AND CONDITIONS FOR USE, REPRODUCTION, AND DISTRIBUTION

### 1. Definitions.

"License" shall mean the terms and conditions for use, reproduction, and distribution as defined by Sections 1 through 9 of this document.

"Licensor" shall mean the copyright owner or entity authorized by the copyright owner that is granting the License.

"Legal Entity" shall mean the union of the acting entity and all other entities that control, are controlled by, or are under common control with that entity. For the purposes of this definition, "control" means (i) the power, direct or indirect, to cause the direction or management of such entity, whether by contract or otherwise, or (ii) ownership of fifty percent (50%) or more of the outstanding shares, or (iii) beneficial ownership of such entity.

"You" (or "Your") shall mean an individual or Legal Entity exercising permissions granted by this License.

"Source" form shall mean the preferred form for making modifications, including but not limited to software source code, documentation source, and configuration files.

"Object" form shall mean any form resulting from mechanical transformation or translation of a Source form, including but not limited to compiled object code, generated documentation, and conversions to other media types.

"Work" shall mean the work of authorship, whether in Source or Object form, made available under the License, as indicated by a copyright notice that is included in or attached to the work (an example is provided in the Appendix below).

"Derivative Works" shall mean any work, whether in Source or Object form, that is based on (or derived from) the Work and for which the editorial revisions, annotations, elaborations, or other modifications represent, as a whole, an original work of authorship. For the purposes of this License, Derivative Works shall not include works that remain separable from, or merely link (or bind by name) to the interfaces of, the Work and Derivative Works thereof.

"Contribution" shall mean any work of authorship, including the original version of the Work and any modifications or additions to that Work or Derivative Works thereof, that is intentionally submitted to Licensor for inclusion in the Work by the copyright owner or by an individual or Legal Entity authorized to submit on behalf of the copyright owner. For the purposes of this definition, "submitted" means any form of electronic, verbal, or written communication sent to the Licensor or its representatives, including but not limited to communication on electronic mailing lists, source code control systems, and issue tracking systems that are managed by, or on behalf of, the Licensor for the purpose of discussing and improving the Work, but excluding communication that is conspicuously marked or otherwise designated in writing by the copyright owner as "Not a Contribution."

"Contributor" shall mean Licensor and any individual or Legal Entity on behalf of whom a Contribution has been received by Licensor and subsequently incorporated within the Work.

### 2. Grant of Copyright License. Subject to the terms and conditions of this License, each Contributor hereby grants to You a perpetual, worldwide, non-exclusive, no-charge, royalty-free, irrevocable

copyright license to reproduce, prepare Derivative Works of, publicly display, publicly perform, sublicense, and distribute the Work and such Derivative Works in Source or Object form.

3. Grant of Patent License. Subject to the terms and conditions of this License, each Contributor hereby grants to You a perpetual, worldwide, non-exclusive, no-charge, royalty-free, irrevocable (except as stated in this section) patent license to make, have made, use, offer to sell, sell, import, and otherwise transfer the Work, where such license applies only to those patent claims licensable by such Contributor that are necessarily infringed by their Contribution(s) alone or by combination of their Contribution(s) with the Work to which such Contribution(s) was submitted. If You institute patent litigation against any entity (including a cross-claim or counterclaim in a lawsuit) alleging that the Work or a Contribution incorporated within the Work constitutes direct or contributory patent infringement, then any patent licenses granted to You under this License for that Work shall terminate as of the date such litigation is filed.
4. Redistribution. You may reproduce and distribute copies of the Work or Derivative Works thereof in any medium, with or without modifications, and in Source or Object form, provided that You meet the following conditions:
  1. You must give any other recipients of the Work or Derivative Works a copy of this License; and
  2. You must cause any modified files to carry prominent notices stating that You changed the files; and
  3. You must retain, in the Source form of any Derivative Works that You distribute, all copyright, patent, trademark, and attribution notices from the Source form of the Work, excluding those notices that do not pertain to any part of the Derivative Works; and
  4. If the Work includes a "NOTICE" text file as part of its distribution, then any Derivative Works that You distribute must include a readable copy of the attribution notices contained within such NOTICE file, excluding those notices that do not pertain to any part of the Derivative Works, in at least one of the following places: within a NOTICE text file distributed as part of the Derivative Works; within the Source form or documentation, if provided along with the Derivative Works; or, within a display generated by the Derivative Works, if and wherever such third-party notices normally appear. The contents of the NOTICE file are for informational purposes only and do not modify the License. You may add Your own attribution notices within Derivative Works that You distribute, alongside or as an addendum to the NOTICE text from the Work, provided that such additional attribution notices cannot be construed as modifying the License.

You may add Your own copyright statement to Your modifications and may provide additional or different license terms and conditions for use, reproduction, or distribution of Your modifications, or for any such Derivative Works as a whole, provided Your use, reproduction, and distribution of the Work otherwise complies with the conditions stated in this License.

5. Submission of Contributions. Unless You explicitly state otherwise, any Contribution intentionally submitted for inclusion in the Work by You to the Licensor shall be under the terms and conditions of this License, without any additional terms or conditions. Notwithstanding the above, nothing herein shall supersede or modify the terms of any separate license agreement you may have executed with Licensor regarding such Contributions.
6. Trademarks. This License does not grant permission to use the trade names, trademarks, service marks, or product names of the Licensor, except as required for reasonable and customary use in describing the origin of the Work and reproducing the content of the NOTICE file.
7. Disclaimer of Warranty. Unless required by applicable law or agreed to in writing, Licensor provides the Work (and each Contributor provides its Contributions) on an "AS IS" BASIS, WITHOUT WARRANTIES OR CONDITIONS OF ANY KIND, either express or implied, including, without

limitation, any warranties or conditions of TITLE, NON-INFRINGEMENT, MERCHANTABILITY, or FITNESS FOR A PARTICULAR PURPOSE. You are solely responsible for determining the appropriateness of using or redistributing the Work and assume any risks associated with Your exercise of permissions under this License.

8. Limitation of Liability. In no event and under no legal theory, whether in tort (including negligence), contract, or otherwise, unless required by applicable law (such as deliberate and grossly negligent acts) or agreed to in writing, shall any Contributor be liable to You for damages, including any direct, indirect, special, incidental, or consequential damages of any character arising as a result of this License or out of the use or inability to use the Work (including but not limited to damages for loss of goodwill, work stoppage, computer failure or malfunction, or any and all other commercial damages or losses), even if such Contributor has been advised of the possibility of such damages.
9. Accepting Warranty or Additional Liability. While redistributing the Work or Derivative Works thereof, You may choose to offer, and charge a fee for, acceptance of support, warranty, indemnity, or other liability obligations and/or rights consistent with this License. However, in accepting such obligations, You may act only on Your own behalf and on Your sole responsibility, not on behalf of any other Contributor, and only if You agree to indemnify, defend, and hold each Contributor harmless for any liability incurred by, or claims asserted against, such Contributor by reason of your accepting any such warranty or additional liability.

END OF TERMS AND CONDITIONS

---- Part 1: CMU/UCD copyright notice: (BSD like) ----

Copyright 1989, 1991, 1992 by Carnegie Mellon University

Derivative Work - 1996, 1998-2000

Copyright 1996, 1998-2000 The Regents of the University of California

All Rights Reserved

Permission to use, copy, modify and distribute this software and its documentation for any purpose and without fee is hereby granted, provided that the above copyright notice appears in all copies and that both that copyright notice and this permission notice appear in supporting documentation, and that the name of CMU and The Regents of the University of California not be used in advertising or publicity pertaining to distribution of the software without specific written permission.

CMU AND THE REGENTS OF THE UNIVERSITY OF CALIFORNIA DISCLAIM ALL WARRANTIES WITH REGARD TO THIS SOFTWARE, INCLUDING ALL IMPLIED WARRANTIES OF MERCHANTABILITY AND FITNESS. IN NO EVENT SHALL CMU OR THE REGENTS OF THE UNIVERSITY OF CALIFORNIA BE LIABLE FOR ANY SPECIAL, INDIRECT OR CONSEQUENTIAL DAMAGES OR ANY DAMAGES WHATSOEVER RESULTING FROM THE LOSS OF USE, DATA OR PROFITS, WHETHER IN AN ACTION OF CONTRACT, NEGLIGENCE OR OTHER TORTIOUS ACTION, ARISING OUT OF OR IN CONNECTION WITH THE USE OR PERFORMANCE OF THIS SOFTWARE.

---- Part 2: Networks Associates Technology, Inc copyright notice (BSD) ----

Copyright (c) 2001-2003, Networks Associates Technology, Inc

All rights reserved.

Redistribution and use in source and binary forms, with or without modification, are permitted provided that the following conditions are met:



\* Redistributions of source code must retain the above copyright notice, this list of conditions and the following disclaimer.

\* Redistributions in binary form must reproduce the above copyright notice, this list of conditions and the following disclaimer in the documentation and/or other materials provided with the distribution.

\* Neither the name of the Networks Associates Technology, Inc nor the names of its contributors may be used to endorse or promote products derived from this software without specific prior written permission.

THIS SOFTWARE IS PROVIDED BY THE COPYRIGHT HOLDERS AND CONTRIBUTORS ``AS IS" AND ANY EXPRESS OR IMPLIED WARRANTIES, INCLUDING, BUT NOT LIMITED TO, THE IMPLIED WARRANTIES OF MERCHANTABILITY AND FITNESS FOR A PARTICULAR PURPOSE ARE DISCLAIMED. IN NO EVENT SHALL THE COPYRIGHT HOLDERS OR CONTRIBUTORS BE LIABLE FOR ANY DIRECT, INDIRECT, INCIDENTAL, SPECIAL, EXEMPLARY, OR CONSEQUENTIAL DAMAGES (INCLUDING, BUT NOT LIMITED TO, PROCUREMENT OF SUBSTITUTE GOODS OR SERVICES; LOSS OF USE, DATA, OR PROFITS; OR BUSINESS INTERRUPTION) HOWEVER CAUSED AND ON ANY THEORY OF LIABILITY, WHETHER IN CONTRACT, STRICT LIABILITY, OR TORT (INCLUDING NEGLIGENCE OR OTHERWISE) ARISING IN ANY WAY OUT OF THE USE OF THIS SOFTWARE, EVEN IF ADVISED OF THE POSSIBILITY OF SUCH DAMAGE.

---- Part 3: Cambridge Broadband Ltd. copyright notice (BSD) ----

Portions of this code are copyright (c) 2001-2003, Cambridge Broadband Ltd.

All rights reserved.

Redistribution and use in source and binary forms, with or without modification, are permitted provided that the following conditions are met:

\* Redistributions of source code must retain the above copyright notice, this list of conditions and the following disclaimer.

\* Redistributions in binary form must reproduce the above copyright notice, this list of conditions and the following disclaimer in the documentation and/or other materials provided with the distribution.

\* The name of Cambridge Broadband Ltd. may not be used to endorse or promote products derived from this software without specific prior written permission.

THIS SOFTWARE IS PROVIDED BY THE COPYRIGHT HOLDER ``AS IS" AND ANY EXPRESS OR IMPLIED WARRANTIES, INCLUDING, BUT NOT LIMITED TO, THE IMPLIED WARRANTIES OF MERCHANTABILITY AND FITNESS FOR A PARTICULAR PURPOSE ARE DISCLAIMED. IN NO EVENT SHALL THE COPYRIGHT HOLDER BE LIABLE FOR ANY DIRECT, INDIRECT, INCIDENTAL, SPECIAL, EXEMPLARY, OR CONSEQUENTIAL DAMAGES (INCLUDING, BUT NOT LIMITED TO, PROCUREMENT OF SUBSTITUTE GOODS OR SERVICES; LOSS OF USE, DATA, OR PROFITS; OR BUSINESS INTERRUPTION) HOWEVER CAUSED AND ON ANY THEORY OF LIABILITY, WHETHER IN CONTRACT, STRICT LIABILITY, OR TORT (INCLUDING NEGLIGENCE OR OTHERWISE) ARISING IN ANY WAY OUT OF THE USE OF THIS SOFTWARE, EVEN IF ADVISED OF THE POSSIBILITY OF SUCH DAMAGE.

---- Part 4: Sun Microsystems, Inc. copyright notice (BSD) ----

Copyright c 2003 Sun Microsystems, Inc., 4150 Network Circle, Santa Clara, California 95054, U.S.A. All rights reserved.

Use is subject to license terms below.

This distribution may include materials developed by third parties.

Sun, Sun Microsystems, the Sun logo and Solaris are trademarks or registered trademarks of Sun Microsystems, Inc. in the U.S. and other countries.

Redistribution and use in source and binary forms, with or without modification, are permitted provided that the following conditions are met:

- \* Redistributions of source code must retain the above copyright notice, this list of conditions and the following disclaimer.
- \* Redistributions in binary form must reproduce the above copyright notice, this list of conditions and the following disclaimer in the documentation and/or other materials provided with the distribution.
- \* Neither the name of the Sun Microsystems, Inc. nor the names of its contributors may be used to endorse or promote products derived from this software without specific prior written permission.

THIS SOFTWARE IS PROVIDED BY THE COPYRIGHT HOLDERS AND CONTRIBUTORS ``AS IS" AND ANY EXPRESS OR IMPLIED WARRANTIES, INCLUDING, BUT NOT LIMITED TO, THE IMPLIED WARRANTIES OF MERCHANTABILITY AND FITNESS FOR A PARTICULAR PURPOSE ARE DISCLAIMED. IN NO EVENT SHALL THE COPYRIGHT HOLDERS OR CONTRIBUTORS BE LIABLE FOR ANY DIRECT, INDIRECT, INCIDENTAL, SPECIAL, EXEMPLARY, OR CONSEQUENTIAL DAMAGES (INCLUDING, BUT NOT LIMITED TO, PROCUREMENT OF SUBSTITUTE GOODS OR SERVICES; LOSS OF USE, DATA, OR PROFITS; OR BUSINESS INTERRUPTION) HOWEVER CAUSED AND ON ANY THEORY OF LIABILITY, WHETHER IN CONTRACT, STRICT LIABILITY, OR TORT (INCLUDING NEGLIGENCE OR OTHERWISE) ARISING IN ANY WAY OUT OF THE USE OF THIS SOFTWARE, EVEN IF ADVISED OF THE POSSIBILITY OF SUCH DAMAGE.

---- Part 5: Sparta, Inc copyright notice (BSD) ----

Copyright (c) 2003-2012, Sparta, Inc

All rights reserved.

Redistribution and use in source and binary forms, with or without modification, are permitted provided that the following conditions are met:

- \* Redistributions of source code must retain the above copyright notice, this list of conditions and the following disclaimer.
- \* Redistributions in binary form must reproduce the above copyright notice, this list of conditions and the following disclaimer in the documentation and/or other materials provided with the distribution.
- \* Neither the name of Sparta, Inc nor the names of its contributors may be used to endorse or promote products derived from this software without specific prior written permission.

THIS SOFTWARE IS PROVIDED BY THE COPYRIGHT HOLDERS AND CONTRIBUTORS ``AS IS" AND ANY EXPRESS OR IMPLIED WARRANTIES, INCLUDING, BUT NOT LIMITED TO, THE IMPLIED WARRANTIES OF MERCHANTABILITY AND FITNESS FOR A PARTICULAR PURPOSE ARE DISCLAIMED. IN NO EVENT SHALL THE COPYRIGHT HOLDERS OR CONTRIBUTORS BE LIABLE FOR ANY DIRECT, INDIRECT, INCIDENTAL, SPECIAL, EXEMPLARY, OR CONSEQUENTIAL DAMAGES (INCLUDING, BUT NOT LIMITED TO, PROCUREMENT OF SUBSTITUTE GOODS OR SERVICES; LOSS OF USE, DATA, OR PROFITS; OR BUSINESS INTERRUPTION) HOWEVER CAUSED AND ON ANY THEORY OF LIABILITY, WHETHER IN CONTRACT, STRICT LIABILITY, OR TORT (INCLUDING NEGLIGENCE OR OTHERWISE) ARISING IN ANY WAY OUT OF THE USE OF THIS SOFTWARE, EVEN IF ADVISED OF THE POSSIBILITY OF SUCH DAMAGE.

---- Part 6: Cisco/BUPTNIC copyright notice (BSD) ----

Copyright (c) 2004, Cisco, Inc and Information Network Center of Beijing University of Posts and Telecommunications.

All rights reserved.

Redistribution and use in source and binary forms, with or without modification, are permitted provided that the following conditions are met:

- \* Redistributions of source code must retain the above copyright notice, this list of conditions and the following disclaimer.
- \* Redistributions in binary form must reproduce the above copyright notice, this list of conditions and the following disclaimer in the documentation and/or other materials provided with the distribution.
- \* Neither the name of Cisco, Inc, Beijing University of Posts and Telecommunications, nor the names of their contributors may be used to endorse or promote products derived from this software without specific prior written permission.

THIS SOFTWARE IS PROVIDED BY THE COPYRIGHT HOLDERS AND CONTRIBUTORS ``AS IS" AND ANY EXPRESS OR IMPLIED WARRANTIES, INCLUDING, BUT NOT LIMITED TO, THE IMPLIED WARRANTIES OF MERCHANTABILITY AND FITNESS FOR A PARTICULAR PURPOSE ARE DISCLAIMED. IN NO EVENT SHALL THE COPYRIGHT HOLDERS OR CONTRIBUTORS BE LIABLE FOR ANY DIRECT, INDIRECT, INCIDENTAL, SPECIAL, EXEMPLARY, OR CONSEQUENTIAL DAMAGES (INCLUDING, BUT NOT LIMITED TO, PROCUREMENT OF SUBSTITUTE GOODS OR SERVICES; LOSS OF USE, DATA, OR PROFITS; OR BUSINESS INTERRUPTION) HOWEVER CAUSED AND ON ANY THEORY OF LIABILITY, WHETHER IN CONTRACT, STRICT LIABILITY, OR TORT (INCLUDING NEGLIGENCE OR OTHERWISE) ARISING IN ANY WAY OUT OF THE USE OF THIS SOFTWARE, EVEN IF ADVISED OF THE POSSIBILITY OF SUCH DAMAGE.

---- Part 7: Fabasoft R&D Software GmbH & Co KG copyright notice (BSD) ----

Copyright (c) Fabasoft R&D Software GmbH & Co KG, 2003 oss@fabasoft.com

Author: Bernhard Penz <bernhard.penz@fabasoft.com>

Redistribution and use in source and binary forms, with or without modification, are permitted provided that the following conditions are met:

- \* Redistributions of source code must retain the above copyright notice, this list of conditions and the following disclaimer.
- \* Redistributions in binary form must reproduce the above copyright notice, this list of conditions and the following disclaimer in the documentation and/or other materials provided with the distribution.
- \* The name of Fabasoft R&D Software GmbH & Co KG or any of its subsidiaries, brand or product names may not be used to endorse or promote products derived from this software without specific prior written permission.

THIS SOFTWARE IS PROVIDED BY THE COPYRIGHT HOLDER ``AS IS" AND ANY EXPRESS OR IMPLIED WARRANTIES, INCLUDING, BUT NOT LIMITED TO, THE IMPLIED WARRANTIES OF MERCHANTABILITY AND FITNESS FOR A PARTICULAR PURPOSE ARE DISCLAIMED. IN NO EVENT SHALL THE COPYRIGHT HOLDER BE LIABLE FOR ANY DIRECT, INDIRECT, INCIDENTAL, SPECIAL, EXEMPLARY, OR CONSEQUENTIAL DAMAGES (INCLUDING, BUT NOT LIMITED TO, PROCUREMENT OF SUBSTITUTE GOODS OR SERVICES; LOSS OF USE, DATA, OR PROFITS; OR BUSINESS INTERRUPTION) HOWEVER CAUSED AND ON ANY THEORY OF LIABILITY, WHETHER

IN CONTRACT, STRICT LIABILITY, OR TORT (INCLUDING NEGLIGENCE OR OTHERWISE) ARISING IN ANY WAY OUT OF THE USE OF THIS SOFTWARE, EVEN IF ADVISED OF THE POSSIBILITY OF SUCH DAMAGE.

---- Part 8: Apple Inc. copyright notice (BSD) ----

Copyright (c) 2007 Apple Inc. All rights reserved.

Redistribution and use in source and binary forms, with or without modification, are permitted provided that the following conditions are met:

1. Redistributions of source code must retain the above copyright notice, this list of conditions and the following disclaimer.
2. Redistributions in binary form must reproduce the above copyright notice, this list of conditions and the following disclaimer in the documentation and/or other materials provided with the distribution.
3. Neither the name of Apple Inc. ("Apple") nor the names of its contributors may be used to endorse or promote products derived from this software without specific prior written permission.

THIS SOFTWARE IS PROVIDED BY APPLE AND ITS CONTRIBUTORS "AS IS" AND ANY EXPRESS OR IMPLIED WARRANTIES, INCLUDING, BUT NOT LIMITED TO, THE IMPLIED WARRANTIES OF MERCHANTABILITY AND FITNESS FOR A PARTICULAR PURPOSE ARE DISCLAIMED. IN NO EVENT SHALL APPLE OR ITS CONTRIBUTORS BE LIABLE FOR ANY DIRECT, INDIRECT, INCIDENTAL, SPECIAL, EXEMPLARY, OR CONSEQUENTIAL DAMAGES (INCLUDING, BUT NOT LIMITED TO, PROCUREMENT OF SUBSTITUTE GOODS OR SERVICES; LOSS OF USE, DATA, OR PROFITS; OR BUSINESS INTERRUPTION) HOWEVER CAUSED AND ON ANY THEORY OF LIABILITY, WHETHER IN CONTRACT, STRICT LIABILITY, OR TORT (INCLUDING NEGLIGENCE OR OTHERWISE) ARISING IN ANY WAY OUT OF THE USE OF THIS SOFTWARE, EVEN IF ADVISED OF THE POSSIBILITY OF SUCH DAMAGE.

---- Part 9: ScienceLogic, LLC copyright notice (BSD) ----

Copyright (c) 2009, ScienceLogic, LLC

All rights reserved.

Redistribution and use in source and binary forms, with or without modification, are permitted provided that the following conditions are met:

- \* Redistributions of source code must retain the above copyright notice, this list of conditions and the following disclaimer.
- \* Redistributions in binary form must reproduce the above copyright notice, this list of conditions and the following disclaimer in the documentation and/or other materials provided with the distribution.
- \* Neither the name of ScienceLogic, LLC nor the names of its contributors may be used to endorse or promote products derived from this software without specific prior written permission.

THIS SOFTWARE IS PROVIDED BY THE COPYRIGHT HOLDERS AND CONTRIBUTORS "AS IS" AND ANY EXPRESS OR IMPLIED WARRANTIES, INCLUDING, BUT NOT LIMITED TO, THE IMPLIED WARRANTIES OF MERCHANTABILITY AND FITNESS FOR A PARTICULAR PURPOSE ARE DISCLAIMED. IN NO EVENT SHALL THE COPYRIGHT HOLDERS OR CONTRIBUTORS BE LIABLE FOR ANY DIRECT, INDIRECT, INCIDENTAL, SPECIAL, EXEMPLARY, OR CONSEQUENTIAL DAMAGES (INCLUDING, BUT NOT LIMITED TO, PROCUREMENT OF SUBSTITUTE GOODS OR SERVICES; LOSS OF USE, DATA, OR PROFITS; OR BUSINESS INTERRUPTION) HOWEVER

CAUSED AND ON ANY THEORY OF LIABILITY, WHETHER IN CONTRACT, STRICT LIABILITY, OR TORT (INCLUDING NEGLIGENCE OR OTHERWISE) ARISING IN ANY WAY OUT OF THE USE OF THIS SOFTWARE, EVEN IF ADVISED OF THE POSSIBILITY OF SUCH DAMAGE.

## LEADTOOLS

Copyright (C) 1991-2009 LEAD Technologies, Inc.

CMap Resources

-----

Copyright 1990-2009 Adobe Systems Incorporated.

All rights reserved.

Copyright 1990-2010 Adobe Systems Incorporated.

All rights reserved.

Redistribution and use in source and binary forms, with or without modification, are permitted provided that the following conditions are met:

Redistributions of source code must retain the above copyright notice, this list of conditions and the following disclaimer.

Redistributions in binary form must reproduce the above copyright notice, this list of conditions and the following disclaimer in the documentation and/or other materials provided with the distribution.

Neither the name of Adobe Systems Incorporated nor the names of its contributors may be used to endorse or promote products derived from this software without specific prior written permission.

THIS SOFTWARE IS PROVIDED BY THE COPYRIGHT HOLDERS AND CONTRIBUTORS "AS IS" AND ANY EXPRESS OR IMPLIED WARRANTIES, INCLUDING, BUT NOT LIMITED TO, THE IMPLIED WARRANTIES OF MERCHANTABILITY AND FITNESS FOR A PARTICULAR PURPOSE ARE DISCLAIMED. IN NO EVENT SHALL THE COPYRIGHT HOLDER OR CONTRIBUTORS BE LIABLE FOR ANY DIRECT, INDIRECT, INCIDENTAL, SPECIAL, EXEMPLARY, OR CONSEQUENTIAL DAMAGES (INCLUDING, BUT NOT LIMITED TO, PROCUREMENT OF SUBSTITUTE GOODS OR SERVICES; LOSS OF USE, DATA, OR PROFITS; OR BUSINESS INTERRUPTION) HOWEVER CAUSED AND ON ANY THEORY OF LIABILITY, WHETHER IN CONTRACT, STRICT LIABILITY, OR TORT (INCLUDING NEGLIGENCE OR OTHERWISE) ARISING IN ANY WAY OUT OF THE USE OF THIS SOFTWARE, EVEN IF ADVISED OF THE POSSIBILITY OF SUCH DAMAGE.

-----

MIT License

Copyright (c) 1998, 1999, 2000 Thai Open Source Software Center Ltd

Permission is hereby granted, free of charge, to any person obtaining a copy of this software and associated documentation files (the "Software"), to deal in the Software without restriction, including without limitation the rights to use, copy, modify, merge, publish, distribute, sublicense, and/or sell copies of the Software, and to permit persons to whom the Software is furnished to do so, subject to the following conditions:

The above copyright notice and this permission notice shall be included in all copies or substantial portions of the Software.

THE SOFTWARE IS PROVIDED "AS IS", WITHOUT WARRANTY OF ANY KIND, EXPRESS OR IMPLIED, INCLUDING BUT NOT LIMITED TO THE WARRANTIES OF MERCHANTABILITY, FITNESS FOR A PARTICULAR PURPOSE AND NONINFRINGEMENT. IN NO EVENT SHALL THE AUTHORS OR COPYRIGHT HOLDERS BE LIABLE FOR ANY CLAIM, DAMAGES OR OTHER LIABILITY, WHETHER IN AN ACTION OF CONTRACT, TORT OR OTHERWISE, ARISING FROM, OUT OF OR IN CONNECTION WITH THE SOFTWARE OR THE USE OR OTHER DEALINGS IN THE SOFTWARE.

Copyright 2000 Computing Research Labs, New Mexico State University

Copyright 2001-2015 Francesco Zappa Nardelli

Permission is hereby granted, free of charge, to any person obtaining a copy of this software and associated documentation files (the "Software"), to deal in the Software without restriction, including without limitation the rights to use, copy, modify, merge, publish, distribute, sublicense, and/or sell copies of the Software, and to permit persons to whom the Software is furnished to do so, subject to the following conditions:

The above copyright notice and this permission notice shall be included in all copies or substantial portions of the Software.

THE SOFTWARE IS PROVIDED "AS IS", WITHOUT WARRANTY OF ANY KIND, EXPRESS OR IMPLIED, INCLUDING BUT NOT LIMITED TO THE WARRANTIES OF MERCHANTABILITY, FITNESS FOR A PARTICULAR PURPOSE AND NONINFRINGEMENT. IN NO EVENT SHALL THE COMPUTING RESEARCH LAB OR NEW MEXICO STATE UNIVERSITY BE LIABLE FOR ANY CLAIM, DAMAGES OR OTHER LIABILITY, WHETHER IN AN ACTION OF CONTRACT, TORT OR OTHERWISE, ARISING FROM, OUT OF OR IN CONNECTION WITH THE SOFTWARE OR THE USE OR OTHER DEALINGS IN THE SOFTWARE.

Written by Joel Sherrill <joel@OARcorp.com>.

COPYRIGHT (c) 1989-2000.

On-Line Applications Research Corporation (OAR).

Permission to use, copy, modify, and distribute this software for any purpose without fee is hereby granted, provided that this entire notice is included in all copies of any software which is or includes a copy or modification of this software.

THIS SOFTWARE IS BEING PROVIDED "AS IS", WITHOUT ANY EXPRESS OR IMPLIED WARRANTY. IN PARTICULAR, THE AUTHOR MAKES NO REPRESENTATION OR WARRANTY OF ANY KIND CONCERNING THE MERCHANTABILITY OF THIS SOFTWARE OR ITS FITNESS FOR ANY PARTICULAR PURPOSE.

(1) Red Hat Incorporated

Copyright (c) 1994-2009 Red Hat, Inc. All rights reserved.

This copyrighted material is made available to anyone wishing to use, modify, copy, or redistribute it subject to the terms and conditions of the BSD License. This program is distributed in the hope that it will be useful, but WITHOUT ANY WARRANTY expressed or implied, including the implied warranties of MERCHANTABILITY or FITNESS FOR A PARTICULAR PURPOSE. A copy of this license is available at <http://www.opensource.org/licenses>. Any Red Hat trademarks that are incorporated in the source code or documentation are not subject to the BSD License and may only be used or replicated with the express permission of Red Hat, Inc.

(2) University of California, Berkeley

Copyright (c) 1981-2000 The Regents of the University of California.

All rights reserved.

Redistribution and use in source and binary forms, with or without modification, are permitted provided that the following conditions are met:

- \* Redistributions of source code must retain the above copyright notice, this list of conditions and the following disclaimer.
- \* Redistributions in binary form must reproduce the above copyright notice, this list of conditions and the following disclaimer in the documentation and/or other materials provided with the distribution.
- \* Neither the name of the University nor the names of its contributors may be used to endorse or promote products derived from this software without specific prior written permission.

THIS SOFTWARE IS PROVIDED BY THE COPYRIGHT HOLDERS AND CONTRIBUTORS "AS IS" AND ANY EXPRESS OR IMPLIED WARRANTIES, INCLUDING, BUT NOT LIMITED TO, THE IMPLIED WARRANTIES OF MERCHANTABILITY AND FITNESS FOR A PARTICULAR PURPOSE ARE DISCLAIMED. IN NO EVENT SHALL THE COPYRIGHT OWNER OR CONTRIBUTORS BE LIABLE FOR ANY DIRECT, INDIRECT, INCIDENTAL, SPECIAL, EXEMPLARY, OR CONSEQUENTIAL DAMAGES (INCLUDING, BUT NOT LIMITED TO, PROCUREMENT OF SUBSTITUTE GOODS OR SERVICES; LOSS OF USE, DATA, OR PROFITS; OR BUSINESS INTERRUPTION) HOWEVER CAUSED AND ON ANY THEORY OF LIABILITY, WHETHER IN CONTRACT, STRICT LIABILITY, OR TORT (INCLUDING NEGLIGENCE OR OTHERWISE) ARISING IN ANY WAY OUT OF THE USE OF THIS SOFTWARE, EVEN IF ADVISED OF THE POSSIBILITY OF SUCH DAMAGE.

The FreeType Project LICENSE

-----

2006-Jan-27

Copyright 1996-2002, 2006 by

David Turner, Robert Wilhelm, and Werner Lemberg

Introduction

=====

The FreeType Project is distributed in several archive packages; some of them may contain, in addition to the FreeType font engine, various tools and contributions which rely on, or relate to, the FreeType Project.

This license applies to all files found in such packages, and which do not fall under their own explicit license. The license affects thus the FreeType font engine, the test programs, documentation and makefiles, at the very least.

This license was inspired by the BSD, Artistic, and IJG (Independent JPEG Group) licenses, which all encourage inclusion and use of free software in commercial and freeware products alike. As a consequence, its main points are that:

- o We don't promise that this software works. However, we will be interested in any kind of bug reports. ('as is' distribution)
- o You can use this software for whatever you want, in parts or full form, without having to pay us. ('royalty-free' usage)
- o You may not pretend that you wrote this software. If you use it, or only parts of it, in a program, you must acknowledge somewhere in your documentation that you have used the FreeType code. ('credits')

We specifically permit and encourage the inclusion of this software, with or without modifications, in commercial products.

We disclaim all warranties covering The FreeType Project and assume no liability related to The FreeType Project.

Finally, many people asked us for a preferred form for a credit/disclaimer to use in compliance with this license. We thus encourage you to use the following text:

""

Portions of this software are copyright © <year> The FreeType  
Project ([www.freetype.org](http://www.freetype.org)). All rights reserved.

""

Please replace <year> with the value from the FreeType version you actually use.

## Legal Terms

=====

### 0. Definitions

-----

Throughout this license, the terms 'package', 'FreeType Project', and 'FreeType archive' refer to the set of files originally distributed by the authors (David Turner, Robert Wilhelm, and Werner Lemberg) as the 'FreeType Project', be they named as alpha, beta or final release.

'You' refers to the licensee, or person using the project, where 'using' is a generic term including compiling the project's source code as well as linking it to form a 'program' or 'executable'.

This program is referred to as 'a program using the FreeType engine'.

This license applies to all files distributed in the original FreeType Project, including all source code, binaries and documentation, unless otherwise stated in the file in its original, unmodified form as distributed in the original archive.

If you are unsure whether or not a particular file is covered by this license, you must contact us to verify this.

The FreeType Project is copyright (C) 1996-2000 by David Turner, Robert Wilhelm, and Werner Lemberg. All rights reserved except as specified below.



## 1. No Warranty

-----

THE FREETYPE PROJECT IS PROVIDED 'AS IS' WITHOUT WARRANTY OF ANY KIND, EITHER EXPRESS OR IMPLIED, INCLUDING, BUT NOT LIMITED TO, WARRANTIES OF MERCHANTABILITY AND FITNESS FOR A PARTICULAR PURPOSE. IN NO EVENT WILL ANY OF THE AUTHORS OR COPYRIGHT HOLDERS BE LIABLE FOR ANY DAMAGES CAUSED BY THE USE OR THE INABILITY TO USE, OF THE FREETYPE PROJECT.

## 2. Redistribution

-----

This license grants a worldwide, royalty-free, perpetual and irrevocable right and license to use, execute, perform, compile, display, copy, create derivative works of, distribute and sublicense the FreeType Project (in both source and object code forms) and derivative works thereof for any purpose; and to authorize others to exercise some or all of the rights granted herein, subject to the following conditions:

- o Redistribution of source code must retain this license file ('FTL.TXT') unaltered; any additions, deletions or changes to the original files must be clearly indicated in accompanying documentation. The copyright notices of the unaltered, original files must be preserved in all copies of source files.

- o Redistribution in binary form must provide a disclaimer that states that the software is based in part of the work of the FreeType Team, in the distribution documentation. We also encourage you to put an URL to the FreeType web page in your documentation, though this isn't mandatory.

These conditions apply to any software derived from or based on the FreeType Project, not just the unmodified files. If you use our work, you must acknowledge us. However, no fee need be paid to us.

## 3. Advertising

-----

Neither the FreeType authors and contributors nor you shall use the name of the other for commercial, advertising, or promotional purposes without specific prior written permission.

We suggest, but do not require, that you use one or more of the following phrases to refer to this software in your documentation or advertising materials: 'FreeType Project', 'FreeType Engine', 'FreeType library', or 'FreeType Distribution'.

As you have not signed this license, you are not required to accept it. However, as the FreeType Project is copyrighted material, only this license, or another one contracted with the authors, grants you the right to use, distribute, and modify it.

Therefore, by using, distributing, or modifying the FreeType Project, you indicate that you understand and accept all the terms of this license.

## 4. Contacts

-----

There are two mailing lists related to FreeType:

- o [freetype@nongnu.org](mailto:freetype@nongnu.org)

Discusses general use and applications of FreeType, as well as future and wanted additions to the library and distribution.

If you are looking for support, start in this list if you haven't found anything to help you in the documentation.

o [freetype-devel@nongnu.org](mailto:freetype-devel@nongnu.org)

Discusses bugs, as well as engine internals, design issues, specific licenses, porting, etc.

Our home page can be found at

<http://www.freetype.org>

--- end of FTL.TXT ---

The following applies only to products supporting Wi-Fi.

(c) 2009-2013 by Jeff Mott. All rights reserved.

Redistribution and use in source and binary forms, with or without modification, are permitted provided that the following conditions are met:

- \* Redistributions of source code must retain the above copyright notice, this list of conditions, and the following disclaimer.
- \* Redistributions in binary form must reproduce the above copyright notice, this list of conditions, and the following disclaimer in the documentation or other materials provided with the distribution.
- \* Neither the name CryptoJS nor the names of its contributors may be used to endorse or promote products derived from this software without specific prior written permission.

THIS SOFTWARE IS PROVIDED BY THE COPYRIGHT HOLDERS AND CONTRIBUTORS "AS IS," AND ANY EXPRESS OR IMPLIED WARRANTIES, INCLUDING, BUT NOT LIMITED TO, THE IMPLIED WARRANTIES OF MERCHANTABILITY AND FITNESS FOR A PARTICULAR PURPOSE, ARE DISCLAIMED. IN NO EVENT SHALL THE COPYRIGHT HOLDER OR CONTRIBUTORS BE LIABLE FOR ANY DIRECT, INDIRECT, INCIDENTAL, SPECIAL, EXEMPLARY, OR CONSEQUENTIAL DAMAGES (INCLUDING, BUT NOT LIMITED TO, PROCUREMENT OF SUBSTITUTE GOODS OR SERVICES; LOSS OF USE, DATA, OR PROFITS; OR BUSINESS INTERRUPTION) HOWEVER CAUSED AND ON ANY THEORY OF LIABILITY, WHETHER IN CONTRACT, STRICT LIABILITY, OR TORT (INCLUDING NEGLIGENCE OR OTHERWISE) ARISING IN ANY WAY OUT OF THE USE OF THIS SOFTWARE, EVEN IF ADVISED OF THE POSSIBILITY OF SUCH DAMAGE.

# Device Management Console Guide

- **General Notes (Device Management Console)**
- **The Features of Device Management Console**
- **Starting Device Management Console**
- **Registering Printer**
- **Deleting Printer**
- **Checking Printer Status**
- **Managing Printer Colors**
  - Checking Color Calibration Execution Status
  - Checking Calibration Link
  - Performing Color Calibration
- **Description of Device Management Console Screen**
  - Main Screen
    - Main Screen (Menu Bar)
    - Main Screen (Printer Status Sheet)
    - Main Screen (Calibration Sheet)
  - Printer Management Dialog Box
  - Add Printer Dialog Box
  - Printer Details Dialog Box
  - Paper Status Dialog Box
  - Calibration Dialog Box
  - Calibration Monitor Dialog Box

## General Notes (Device Management Console)

When using Device Management Console, the following restrictions apply. Please familiarize yourself with them before using it.

- See the Canon website for products that are compatible with Device Management Console.
- This guide primarily provides explanations using the screens that are displayed when you use the OS X Yosemite 10.10 operating system.

### Connecting to a Printer

- Connecting to a Target Printer

We recommend using a network connection for printer connection.

- Connecting via SSL Encrypted Communication

Connecting via SSL Encrypted Communication is available with Device Management Console V1.2.0 or later.

In order to use SSL Encrypted Communication, you must first install a certificate on a computer with Device Management Console installed.

The process for installing the certificate may differ depending on your setup. For more information, search for "Registering Printer's Root Certificate to Local Computer for SSL Communication" on your device's online manual homepage.

### Printer Power

- The printer information cannot be acquired when the printer power is turned off automatically or it is turned off with the power button.

In addition, information cannot be acquired from the software when the printer auto power off state or the printer button off state is canceled.

### Color Tone

- The color tone may not be stable even if color calibration is performed.

For details, search for and refer to the "Managing Colors" page from the home page of the Online Manual for your model.

## The Features of Device Management Console

Use Device Management Console to check the status of a printer connected by a network or USB and to perform color calibration for a selected printer.

In addition, you can check the recommended level of color calibration execution, execution logs, and calibration link status.

### Note

- In Device Management Console, multiple printers that can print with the same color are called calibration-linked printers.

### Checking Printer Status

Use the **Printer Status** sheet on the main screen to check the printer status.

■ [Checking Printer Status](#)

### Checking Color Calibration Status

Use the **Calibration** sheet on the main screen to check the recommended level of color calibration execution and execution logs.

■ [Checking Color Calibration Execution Status](#)

In addition, you can also check the calibration link status.

■ [Checking Calibration Link](#)

### Performing Color Calibration

Use the **Calibration** sheet on the main screen to perform a color calibration for the selected printer.

Performing color calibration improves color consistency by compensating for slight differences in how color appears due to individual variations or aging among printers.

■ [Performing Color Calibration](#)

# Starting Device Management Console

Follow the procedure below to start the Device Management Console.

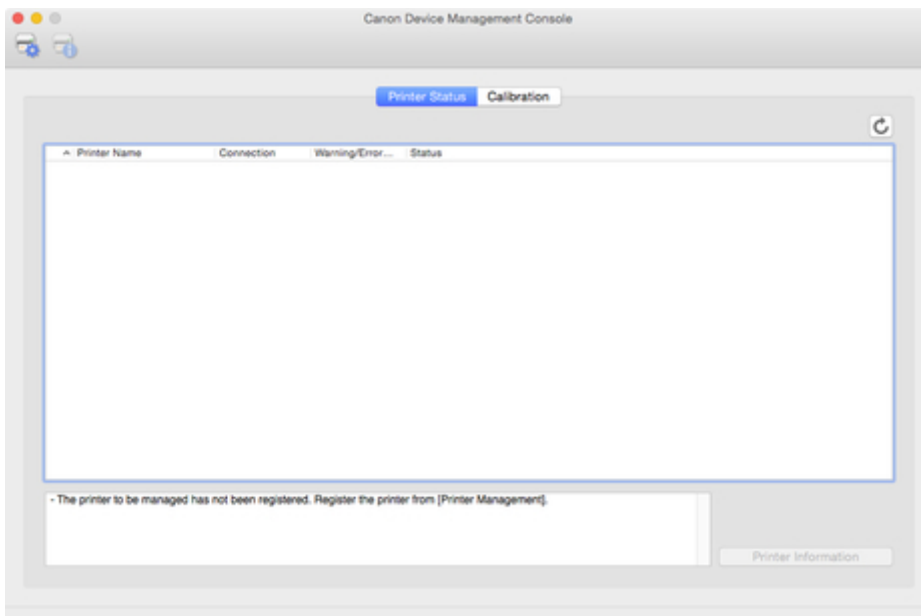
1. Execute any of the following:

- Click the **Device Management Console** button on the **Management Tool** sheet in the Quick Utility Toolbox.
- Select **Applications** from the Finder's **Go** menu, and then double-click in the following order: **Canon Utilities** folder > **Device Management Console** folder > **Canon Device Management Console** icon.

## ▶▶▶Note

- Quick Utility Toolbox is a Canon software application.

The **Printer Status** sheet on the main screen of Device Management Console appears.



Printers do not appear on the main screen at initial startup.

Register the managed printer while referring to "[Registering Printer](#)".

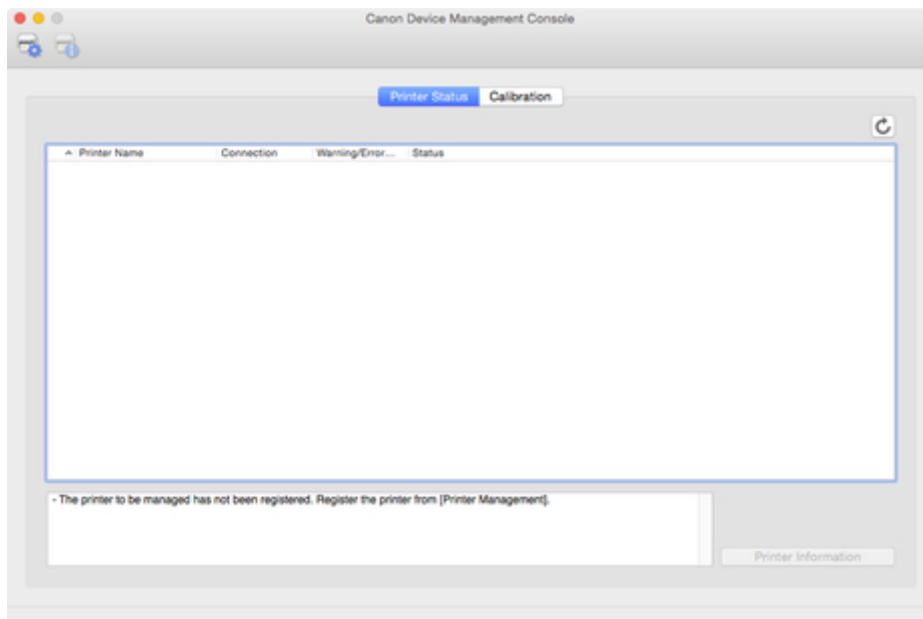
## Registering Printer

Register the printer for which you want to check the printer status or color calibration execution status.

### ▶▶▶Note

- The **Calibration** sheet does not appear for printers that do not support color calibration.

1. Click  button (or select **Manage Printer** from **File** menu).

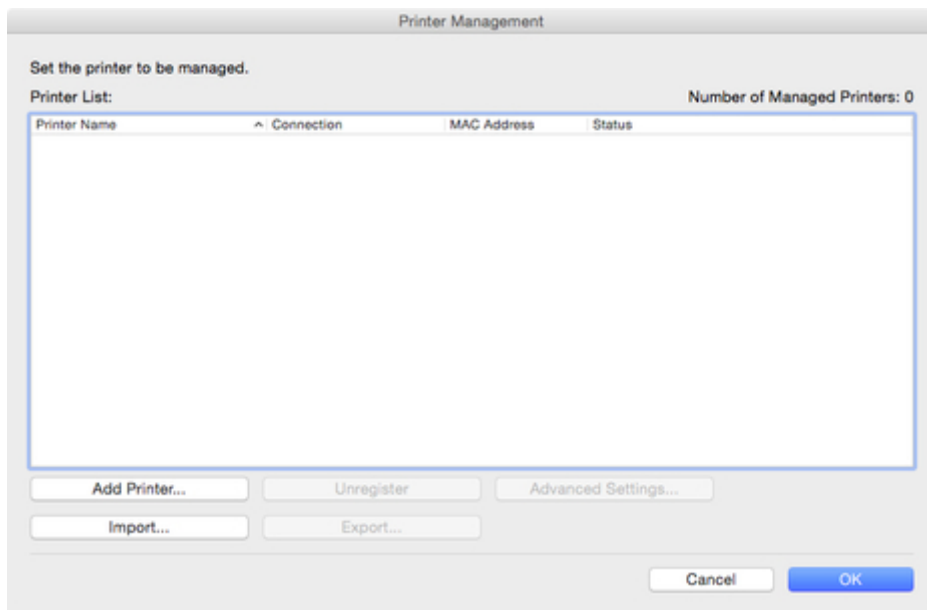


### ▶▶▶Note

- This operation cannot be performed when acquiring information from the printer.

The **Printer Management** dialog box appears.

2. Click **Add Printer** button.

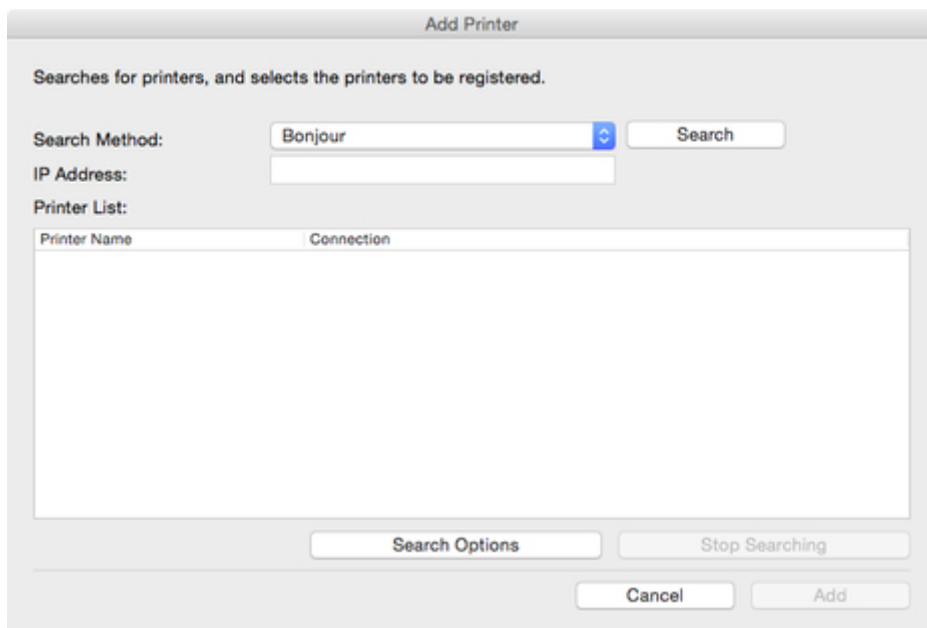


### ►►►Note

- For details on the **Printer Management** dialog box, see "[Printer Management Dialog Box.](#)"

The **Add Printer** dialog box appears.

3. Select **Bonjour** in **Search Method**, and then click the **Search** button.



### ►►►Note

- To search by SNMP community, click the **Search Options** button, and then specify a **Specify community name**.
- For details on the **Add Printer** dialog box, see "[Add Printer Dialog Box.](#)"

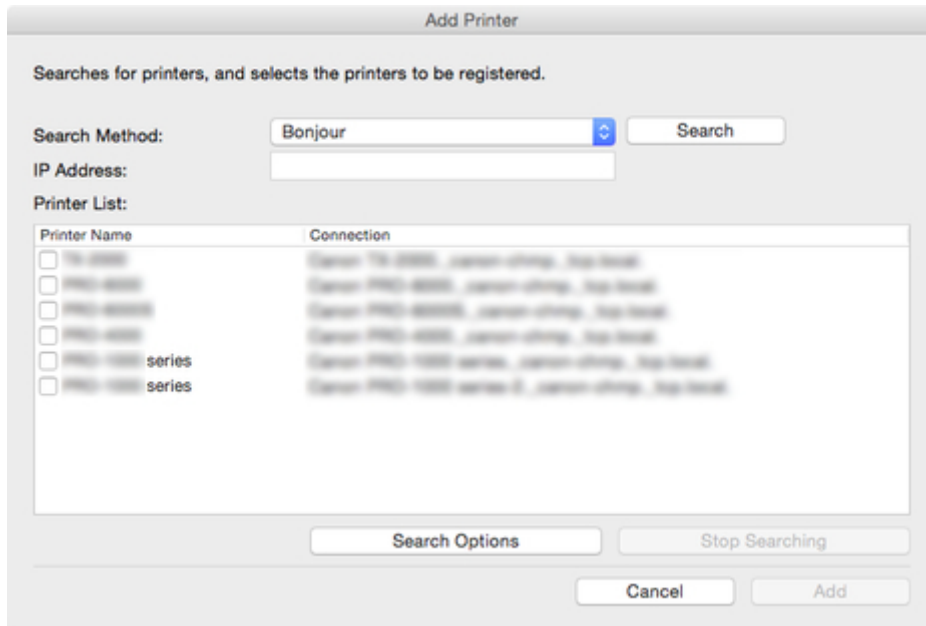
The printers found appear in **Printer List**.



## »»»Note

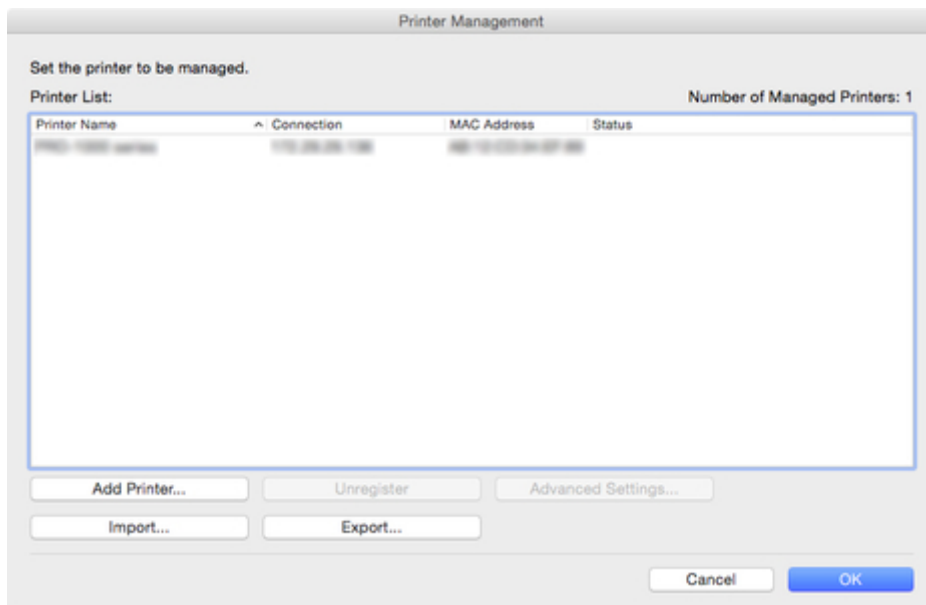
- If the printer you want to register does not appear, check that the printer power is turned on and check the network status, and then search again.
- When **Search Method** is set to **USB**, a search for local printers is performed.

4. From list of displayed printers, select check boxes of printers to register, and click **Add** button.



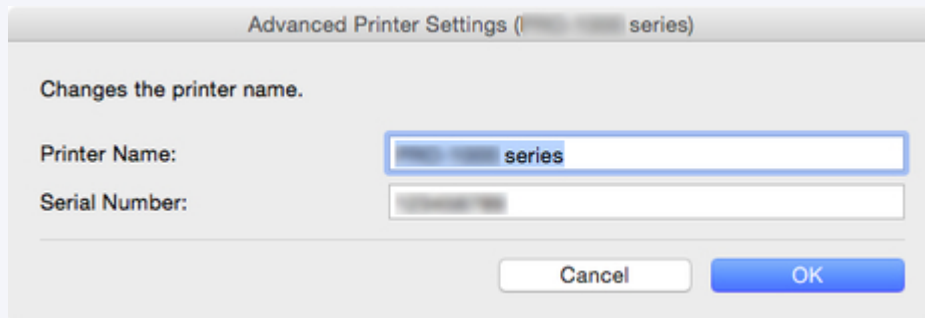
The registered printers appear in the **Printer Management** dialog box.

5. Click the **OK** button.

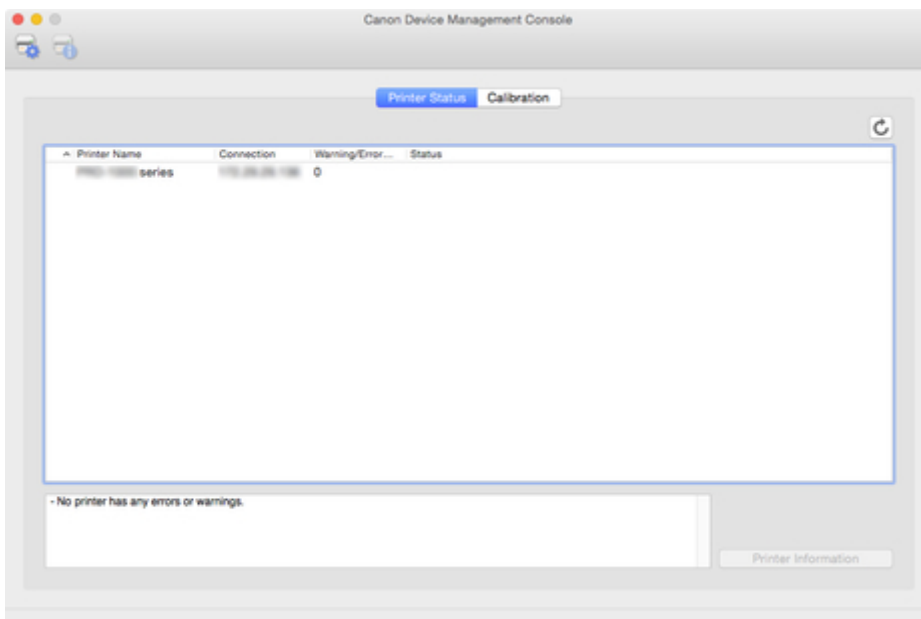


## ►►►Note

- To change the displayed printer names, use the **Advanced Printer Settings** dialog box that appears when you click the **Advanced Settings** button.



The registered printers appear on the main screen.



## ►►►Note

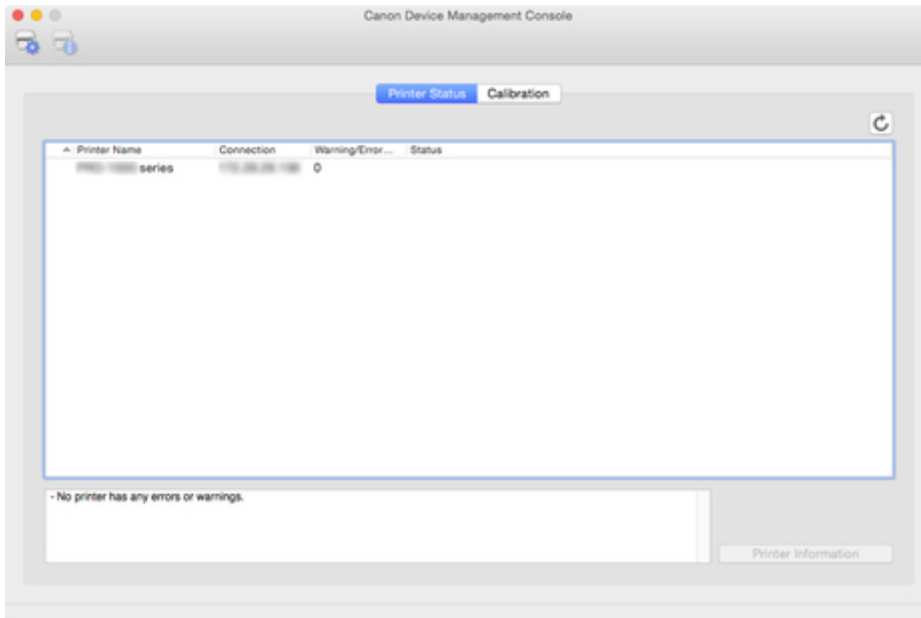
- When switching the connection method of a registered printer between network and USB, first delete the registered printer, and then register it again.

## Deleting Printer

Delete a managed printer.

The deleted printer is deleted from both the **Printer Status** and **Calibration** sheets.

1. Click  button (or select **Manage Printer** from **File** menu).

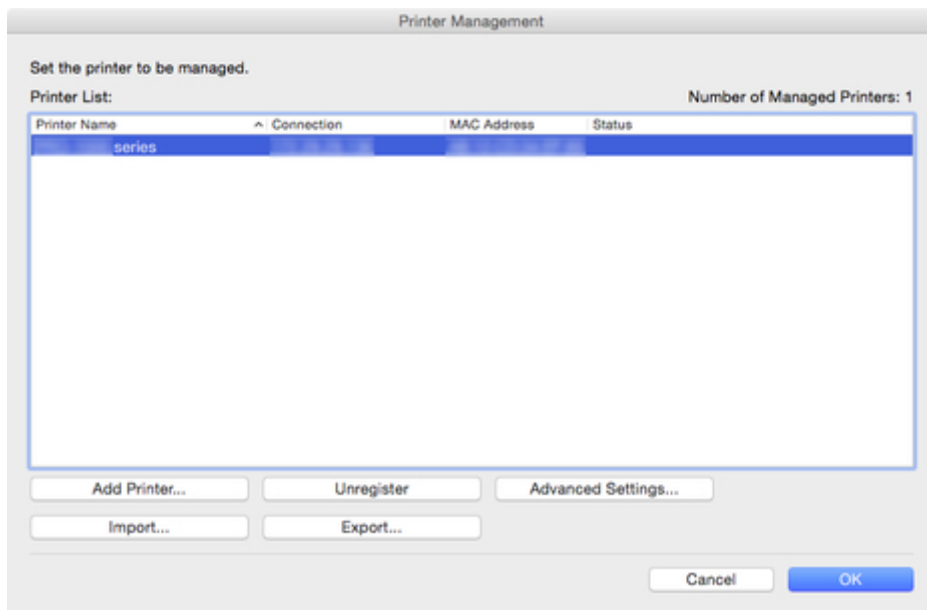


### »»Note

- This operation cannot be performed when acquiring information from the printer.

The **Printer Management** dialog box appears.

2. Select printer to be deleted and click **Unregister** button.

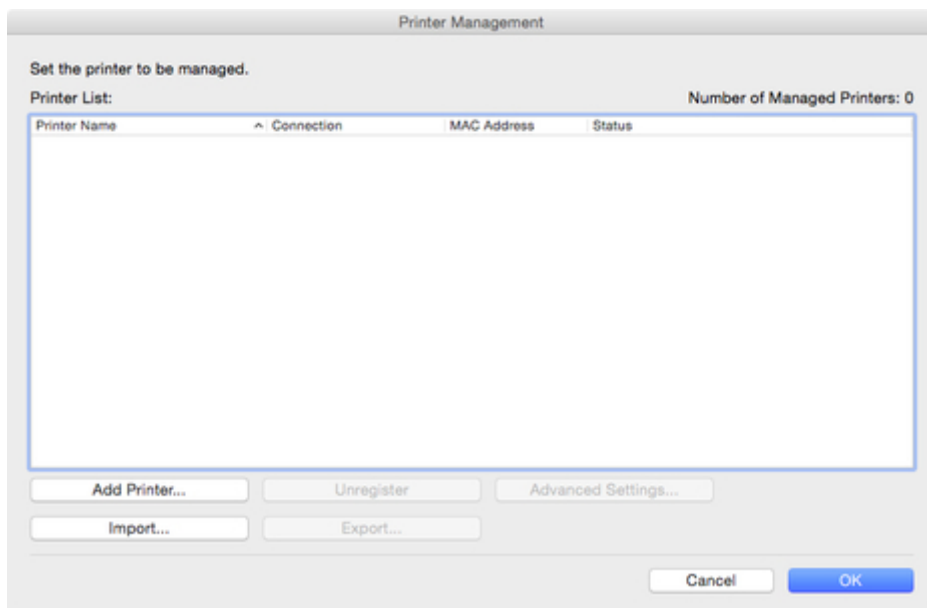


### ►►►Note

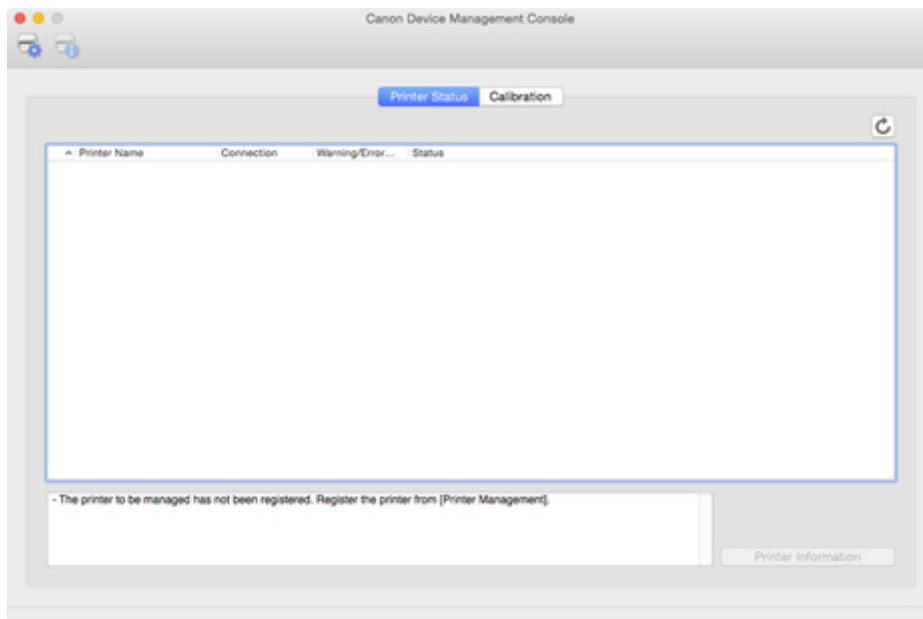
- For details on the **Printer Management** dialog box, see "[Printer Management Dialog Box](#)."

The selected printer is deleted from the **Printer List**.

3. Click the **OK** button.



The managed printer is deleted.



## Checking Printer Status

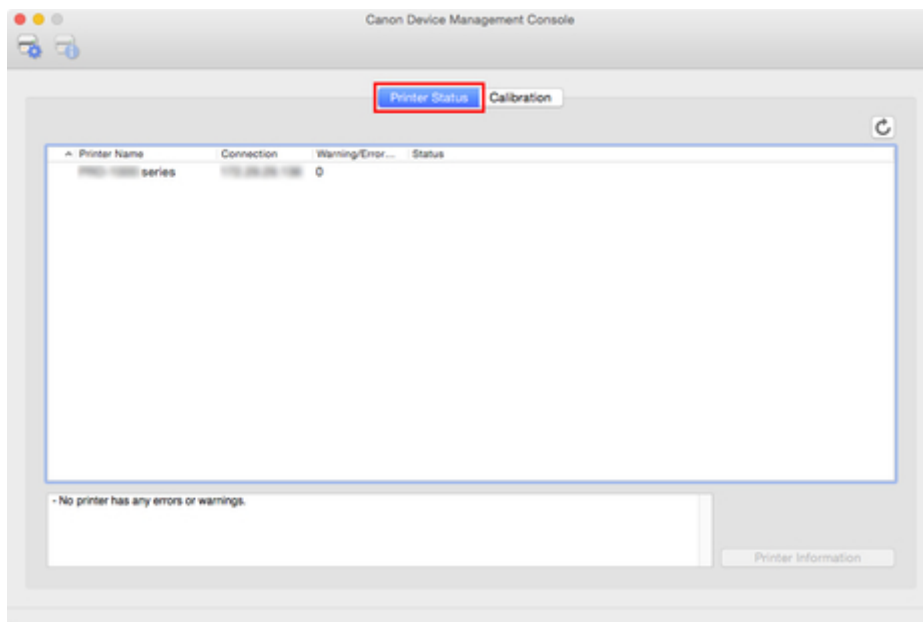
Use the **Printer Status** sheet on the main screen to check the printer status.

### ▶▶▶Note


- To check the status of a printer, the managed printer must be registered in advance.

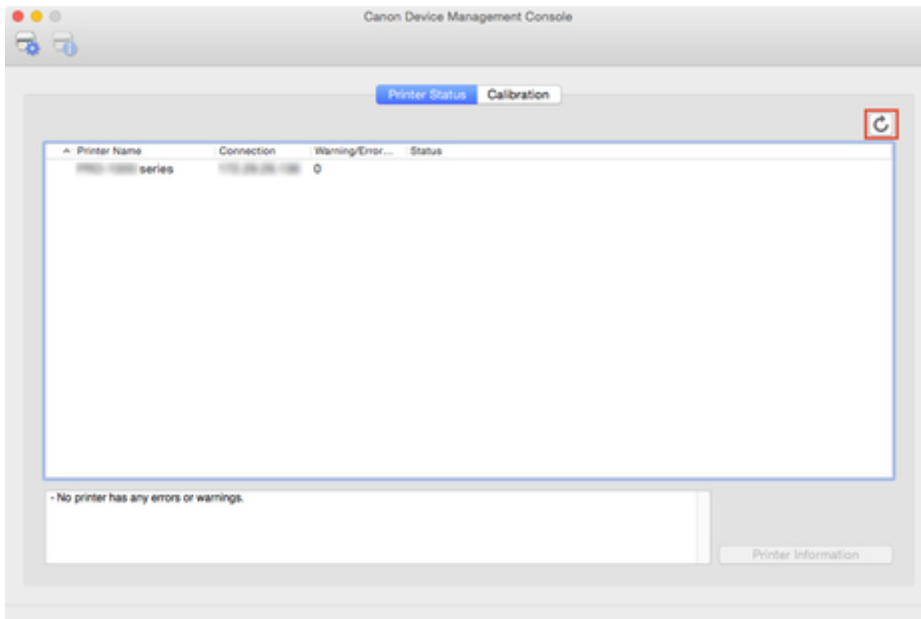
■ [Registering Printer](#)

1. Click **Printer Status** tab (or select **Printer Status** from **View** menu).




The **Printer Status** sheet appears.

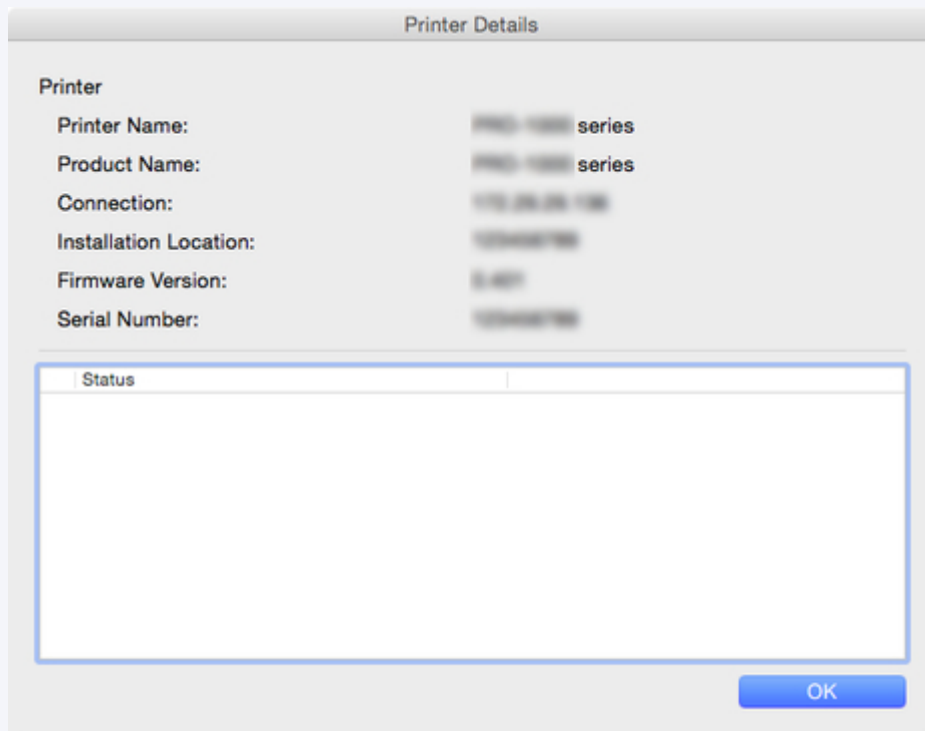
2. Click  button (or select **Update** from **View** menu).



The printer status that appears on the main screen is up to date.

### ▶▶▶Note

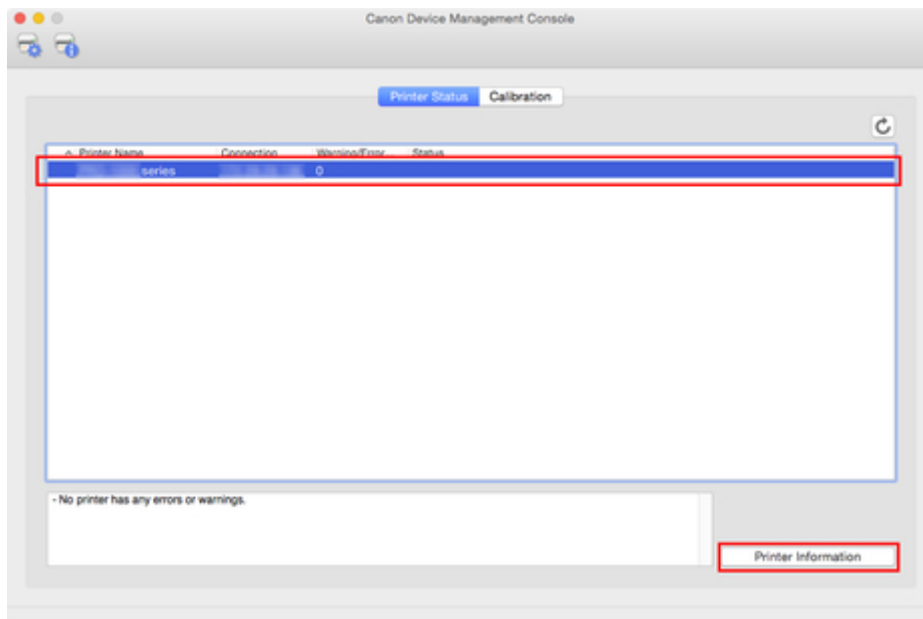
- Select a printer and click the  button to display the **Printer Details** dialog box, allowing you to check the detailed printer information.



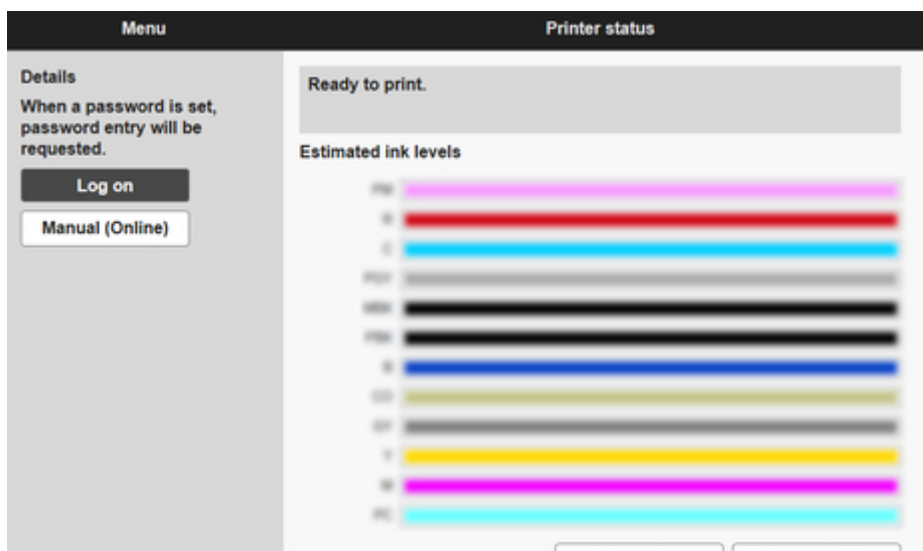
For details on the **Printer Details** dialog box, see "[Printer Details Dialog Box](#)."

- This operation cannot be performed when acquiring information from the printer.

3. To see more detailed information, select a printer, and click the **Printer Information** button.



The Web browser starts, and the main screen of the Remote UI for the selected printer appears.



### Important

- You cannot view detailed information about a printer with Remote UI for a printer connected with USB or IPv6.



## Managing Printer Colors

- [Checking Color Calibration Execution Status](#)
- [Checking Calibration Link](#)
- [Performing Color Calibration](#)

## Checking Color Calibration Execution Status

Use the **Calibration** sheet on the main screen to check the recommended level of color calibration execution and execution logs.

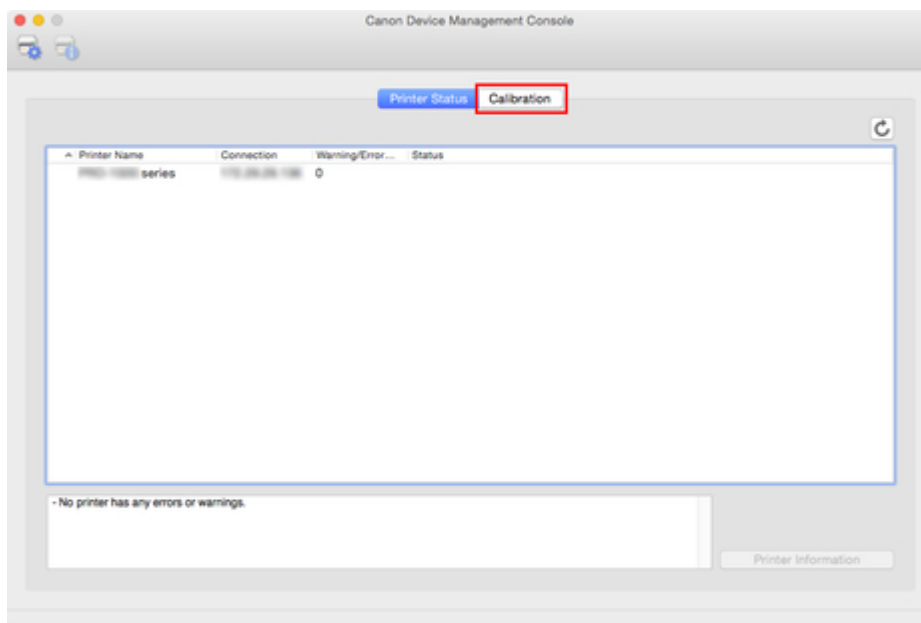
■ [Checking Advisability of Executing Color Calibration](#)

■ [Checking Color Calibration Execution Logs](#)

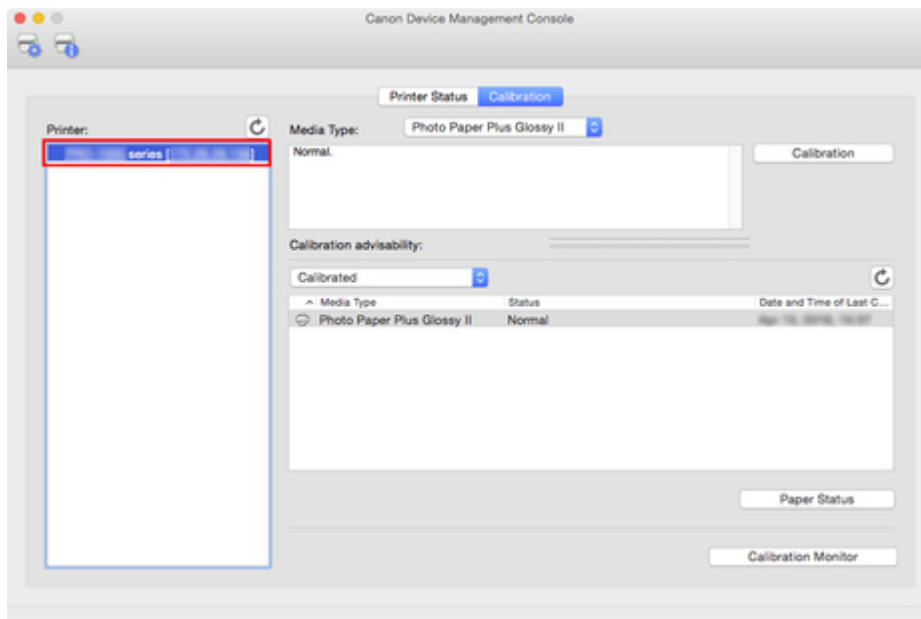
### Checking Advisability of Executing Color Calibration

You can check whether color calibration needs to be executed.

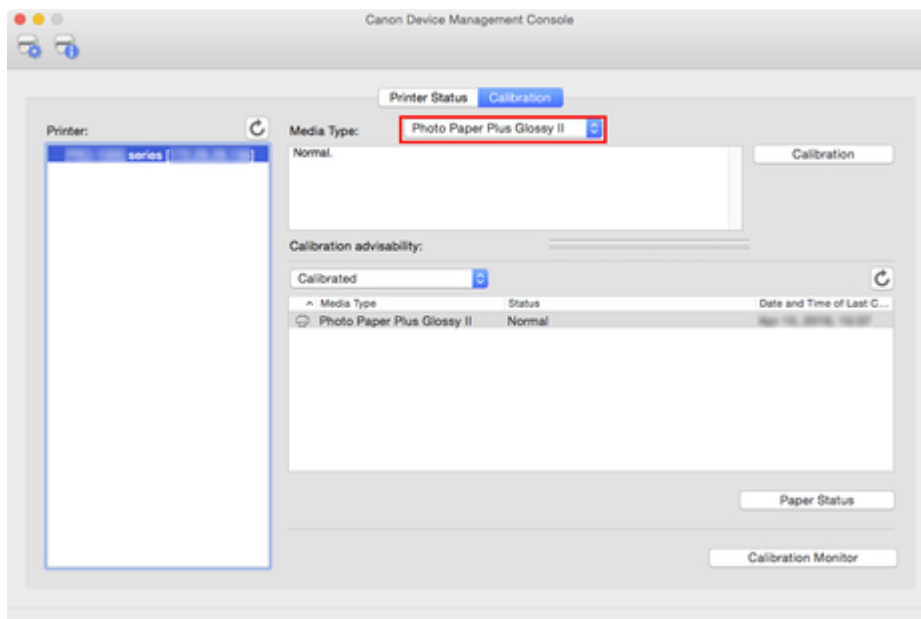
1. Click **Calibration** tab (or select **Calibration** from **View** menu).



2. From the printer list, select the printer for which you want to check the advisability of executing color calibration.



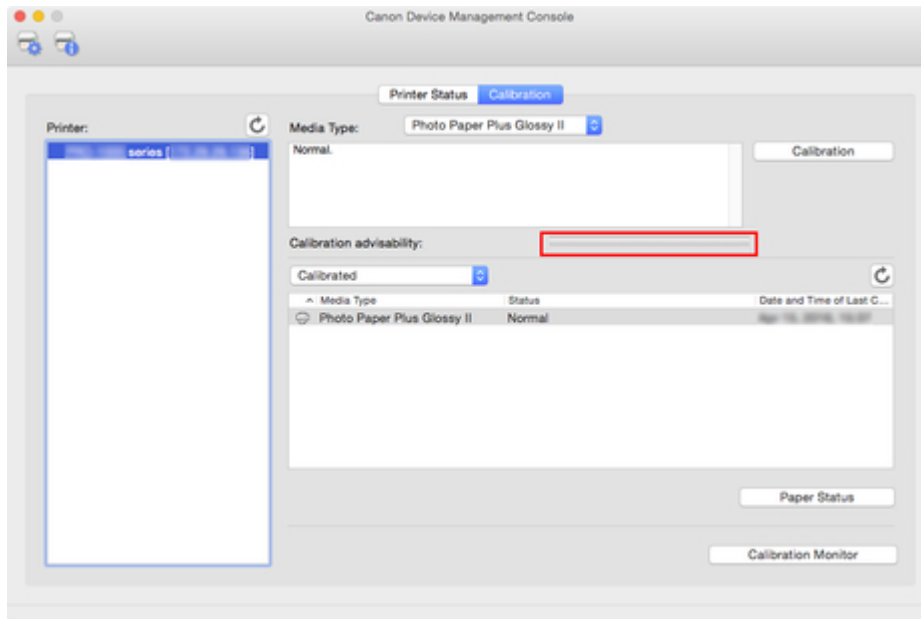
3. Select the media type in **Media Type**.



### ▶▶▶Note

- When **Media Type** cannot be selected, the paper loaded in the printer appears.

4. Check the progress bar of **Calibration advisability**.



When the progress bar is yellow or red (progress bar is at 90% or more), we recommend that color calibration be executed.

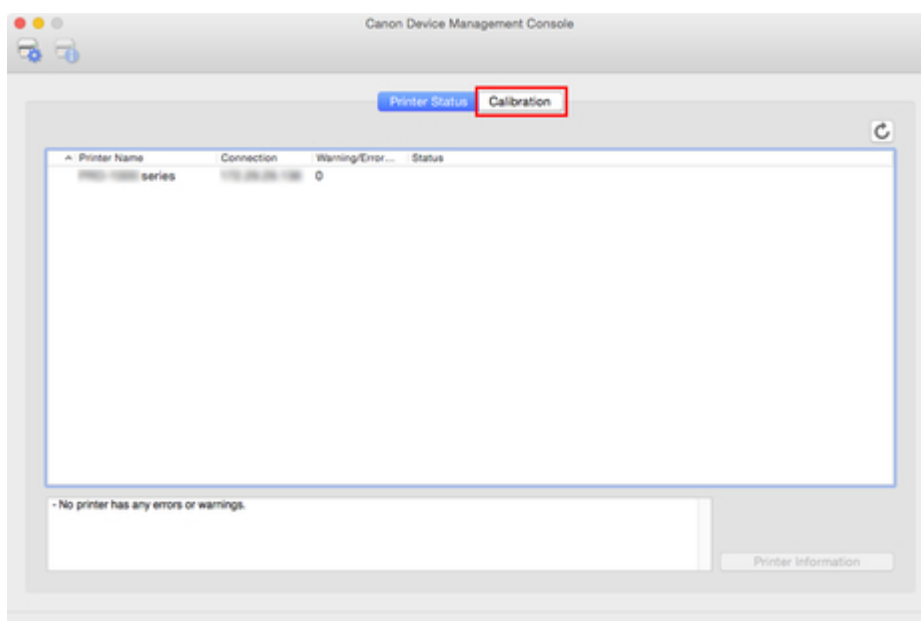
### Important

- The progress bar display is used for reference for performing color calibration.  
Perform color calibration when replacing the printhead or when you are concerned about differences in color tone.

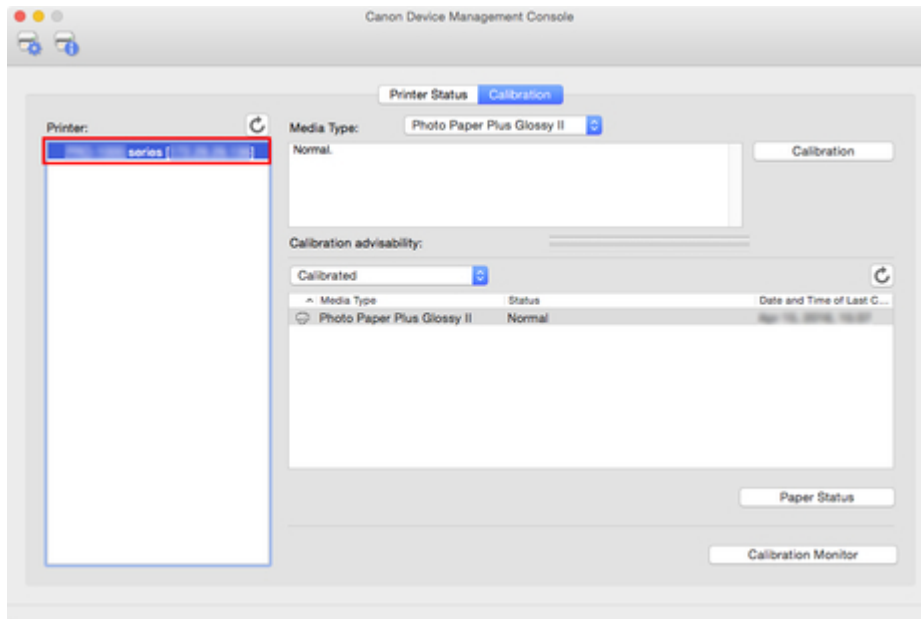
## Checking Color Calibration Execution Logs

You can check the color calibration execution log for each paper.

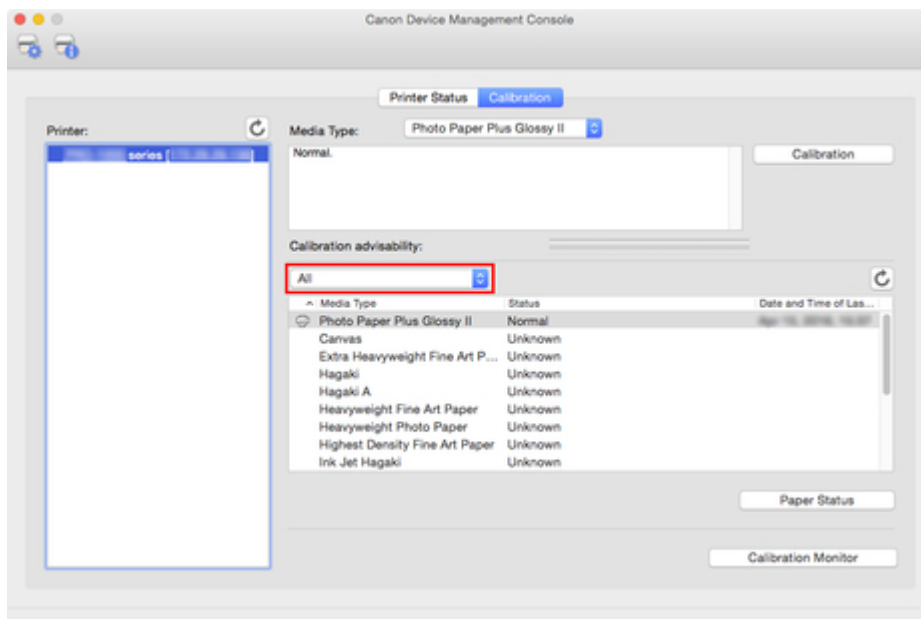
1. Click **Calibration** tab (or select **Calibration** from **View** menu).



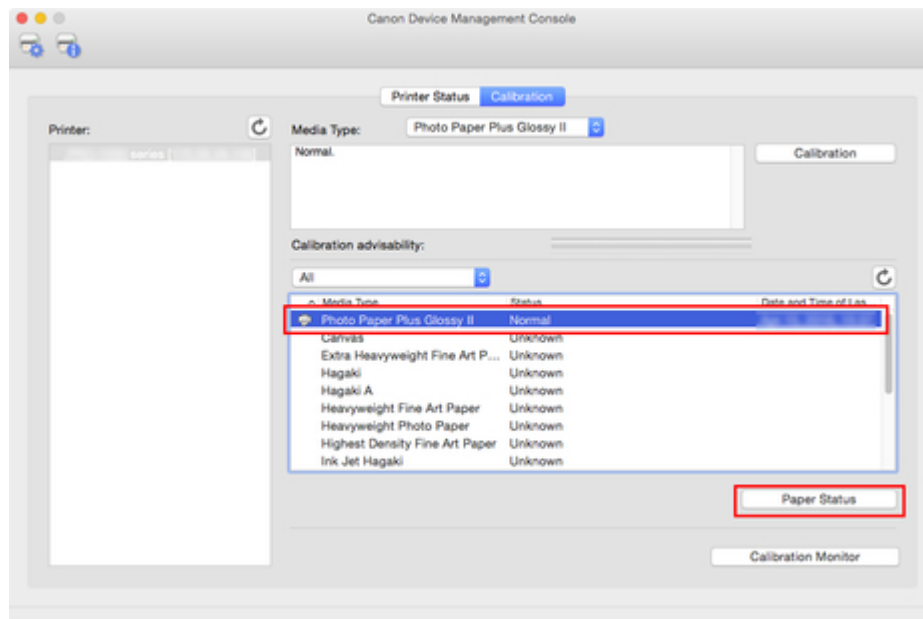
2. From printer list, select printer for which you want to check color calibration execution log.



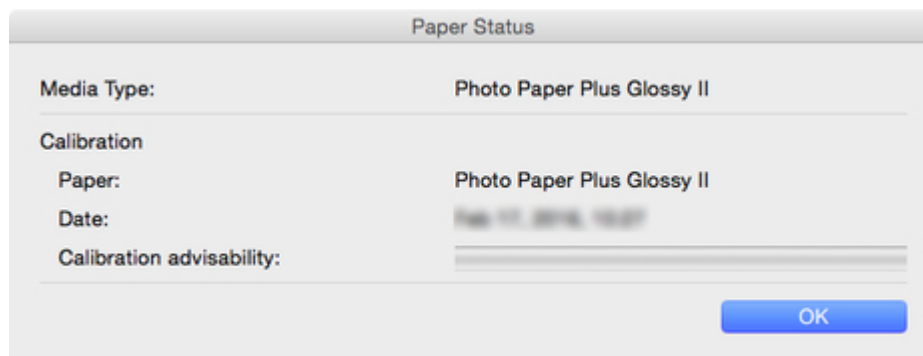
3. From paper list display criteria, select **All**.



4. From paper list, select paper for which you want to check details and click **Paper Status** button.



The **Paper Status** dialog box appears.



You can check the color calibration status for the selected paper.

### ▶▶▶Note

- For details on the **Paper Status** dialog box, see "[Paper Status Dialog Box](#)."

## Checking Calibration Link

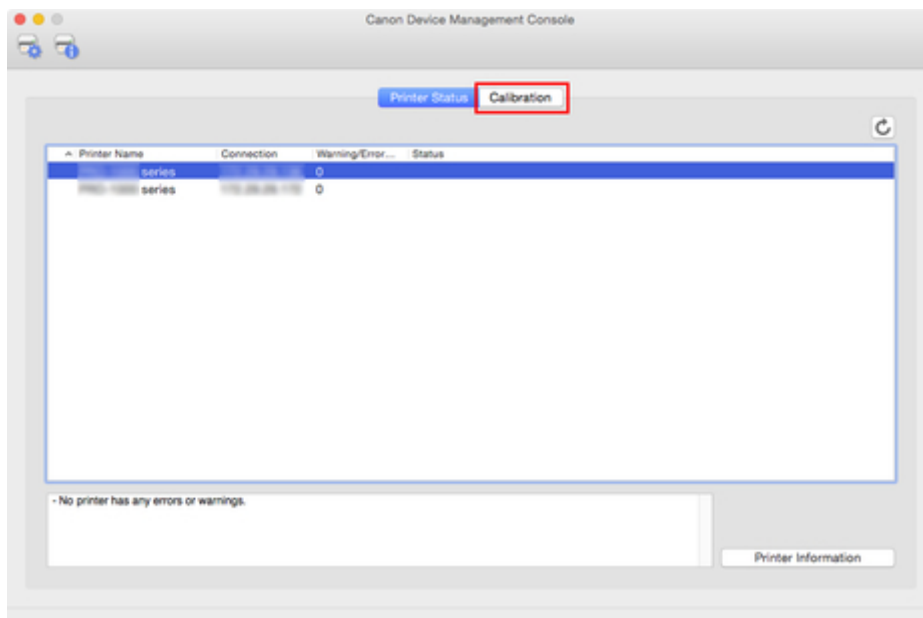
In Device Management Console, multiple printers that can print with the same color are called calibration-linked printers.

Calibration-linked printers are grouped with the same calibration group name and displayed.


### Important

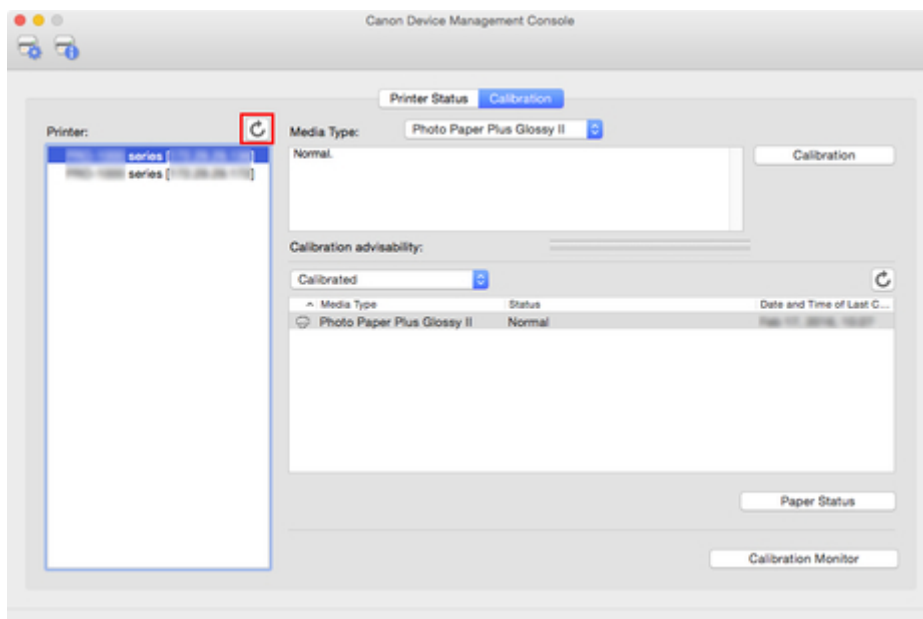
- Calibration link is performed for multiple printers that meet the following conditions.
  - The printer belongs to the same series that supports calibration link.
  - The same media type is selected in **Calibration** sheet > **Media Type** on the main screen.  
For models for which **Media Type** cannot be selected, the same media type is loaded in the printer.
  - Color calibration is performed at least once for each printer with the above paper.

1. Click **Calibration** tab (or select **Calibration** from **View** menu).

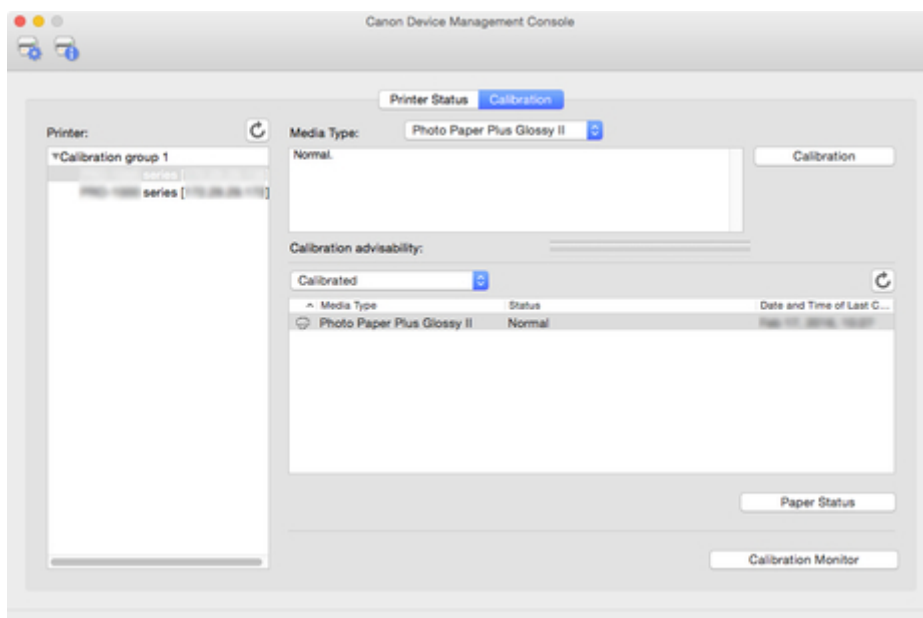


The **Calibration** sheet appears.

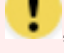

2. To right of printer list, click  button (or select **Update Calibration Link** from **View** menu).



Calibration-linked printers are grouped with the same calibration group name and displayed.



## »»» Important

- For printers displayed with , you may not be able to print with the same color tone. See the message displayed in the guide message area, and print after confirming that  is not displayed.

When "The calibration target in the media information file is not up-to-date." appears for a printer, export the media information for any printer not displaying this message to a file using Media Configuration Tool, and then import the exported media information to the printer displaying this message. For information on exporting and importing media information, search for and refer to "Media Configuration Tool Guide" from the home page of the Online Manual for your model.



## Note

- Move the mouse pointer over **Calibration group** to display the media type to be grouped.
- Double-click **Calibration group** to open and close the Calibration group tree.

## Performing Color Calibration

Use the **Calibration** sheet on the main screen to perform color calibration for the displayed printer.

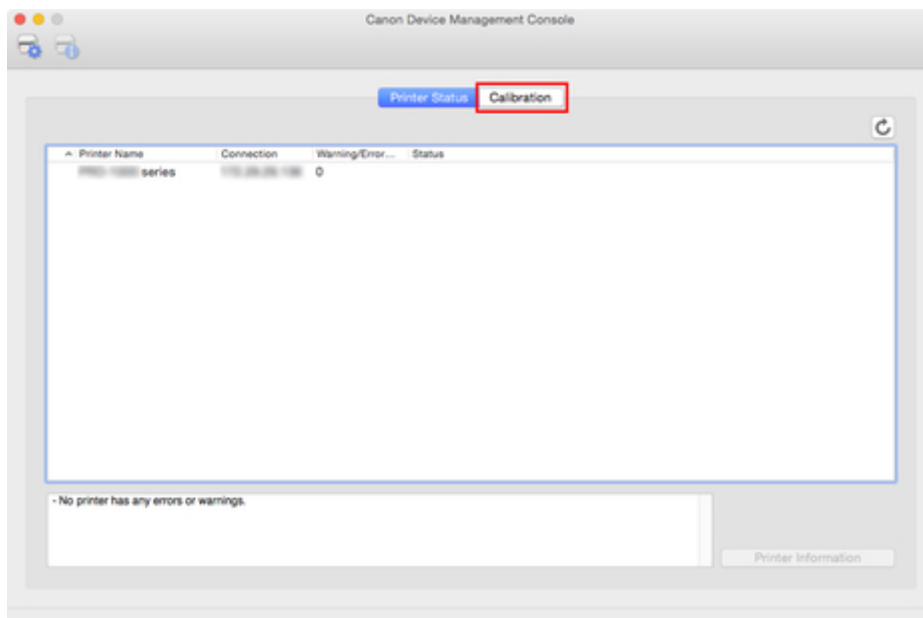
### Important

- You must load paper into the printer to perform color calibration.

For details on the paper that can be used for color calibration, search for and refer to the following pages from the home page of the Online Manual for your model.

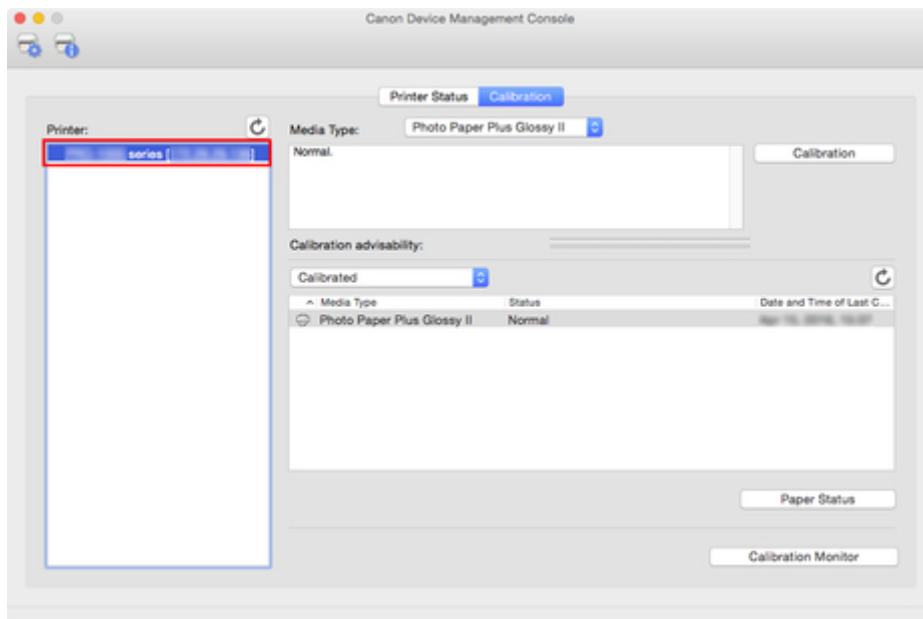
- Model that supports roll paper  
"Paper Information List"
- Model that does not support roll paper  
"Paper that Can Be Used in Color Calibration"

1. Click **Calibration** tab (or select **Calibration** from **View** menu).

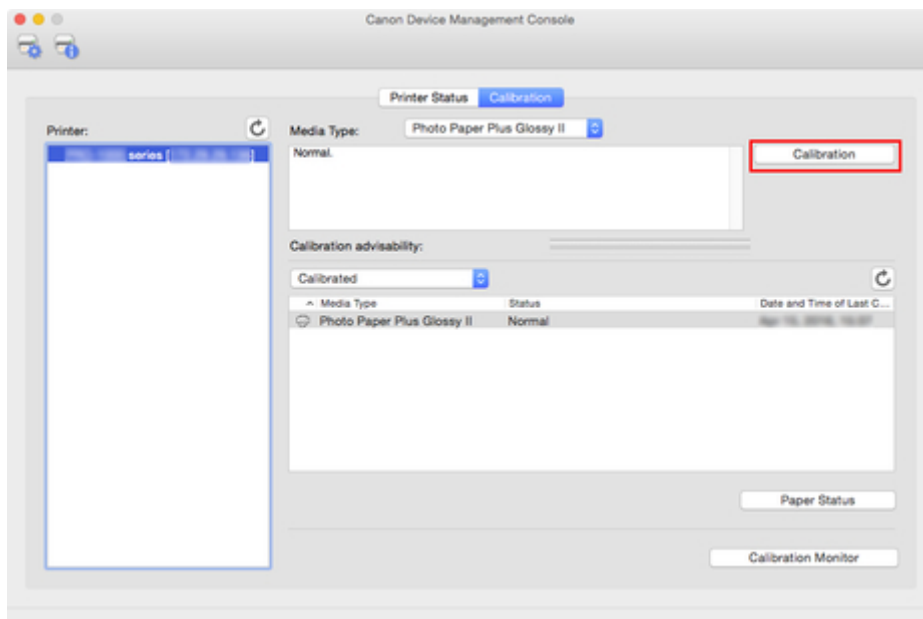


The **Calibration** sheet appears.

2. From printer list, select printer for which you want to perform color calibration.

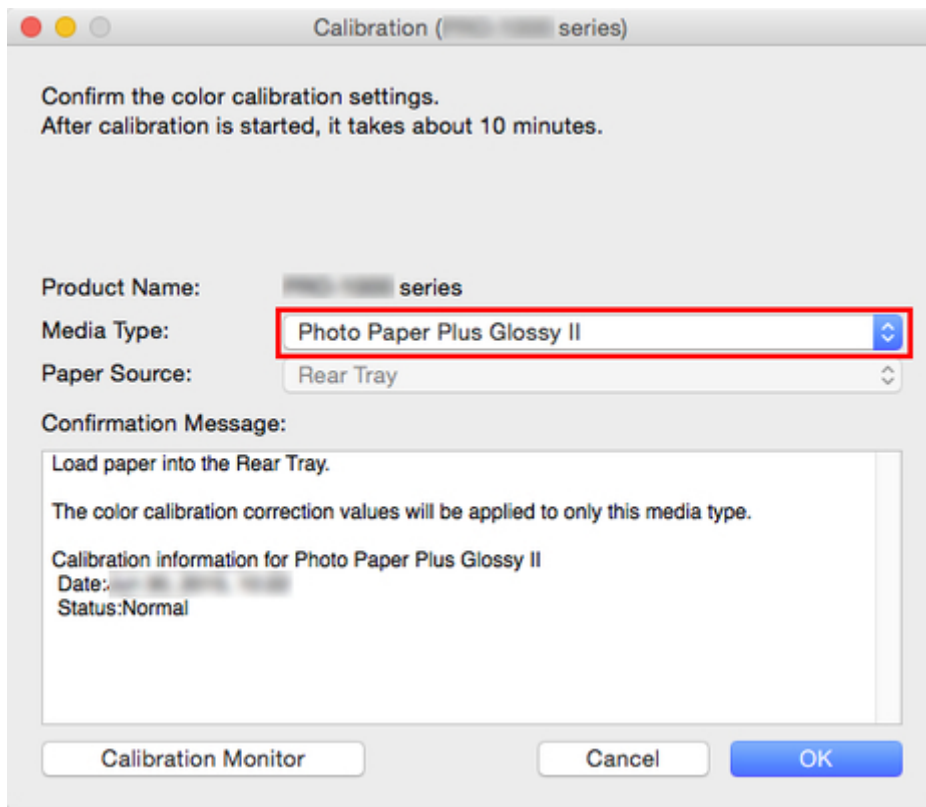


- Click **Calibration** button (or select **Calibration** from **Execute** menu).



The **Calibration** dialog box appears.

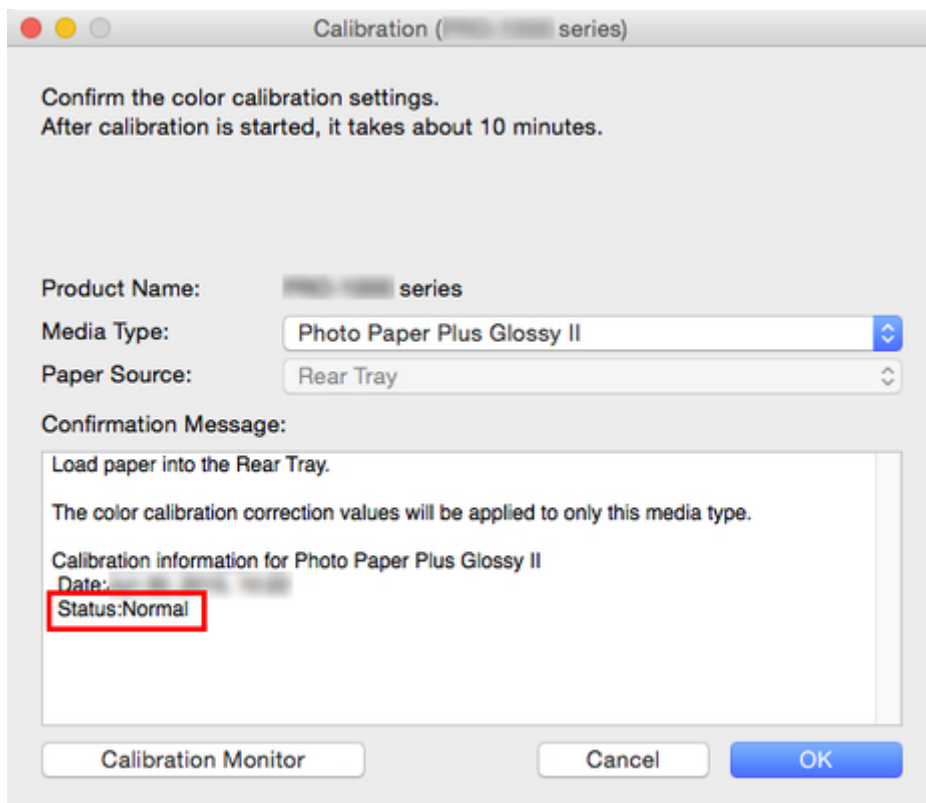
- Select the **Media Type** for color calibration.



### ►►►Note

- The media type for the paper fed on the printer appears depending on your model.

#### 5. Verify the **Status** in the **Confirmation Message**.

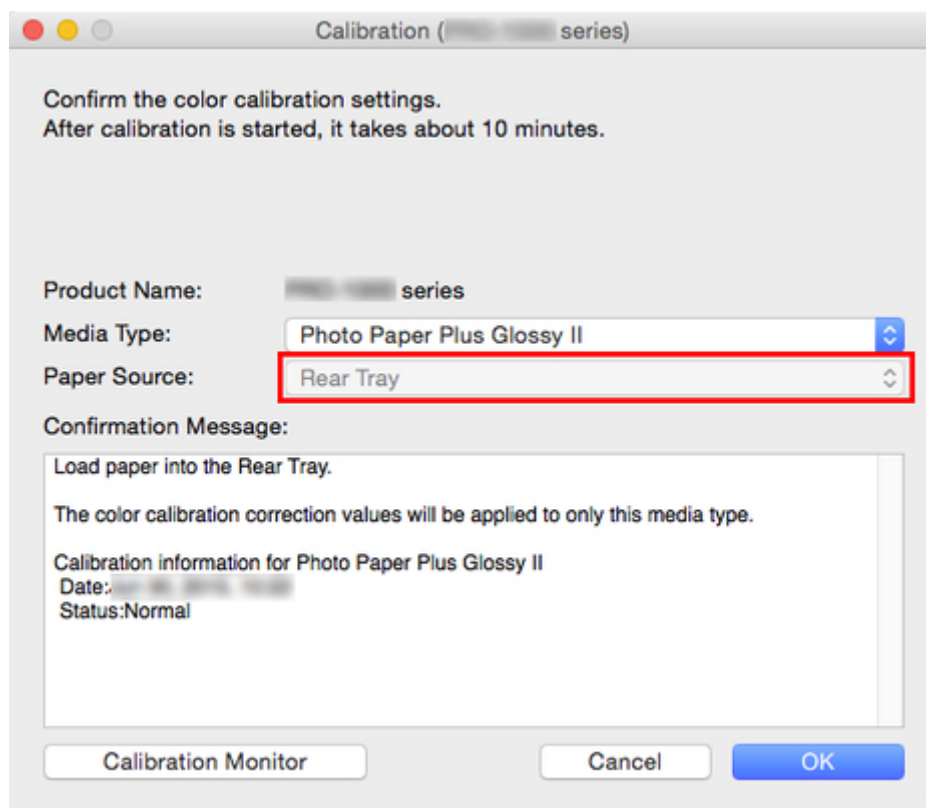


The **Status** in the **Confirmation Message** will let you know if color calibration is required.

### ►►► Important

- If you are not performing color calibration, click the **Cancel** button.

#### 6. Verify the **Paper Source**.



The paper sources for which color calibration can be performed are displayed for the paper in **Media Type**.

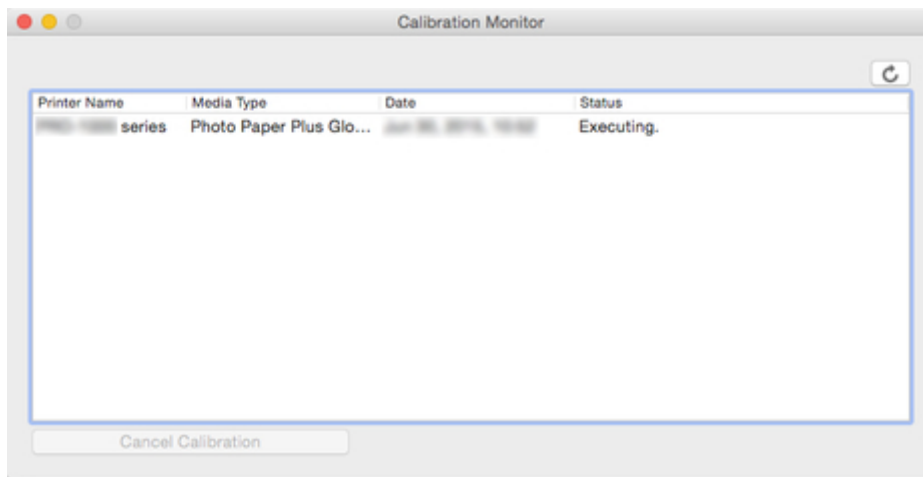
If the displayed paper source and the paper loaded to perform color calibration are different, reload the paper in the paper source displayed in **Paper Source**.

### ►►► Note


- Depending on your model, you can select the **Paper Source**.
- If you are using a PRO-1000 or PRO-500 model, only the rear tray can be used as the paper source for color calibration.

#### 7. Click the **OK** button.


The color calibration starts and the **Calibration Monitor** dialog box appears.



### Important

- To update the color calibration progress status, you must click the  button.
- After 30 minutes have elapsed from the start of the color calibration and you close the dialog box, you cannot check the progress status of the color calibration even if you display the **Calibration Monitor** dialog box the next time.
- Depending your model, you cannot check the progress status of color calibration for a printer connected by USB by closing this dialog box, and then displaying the **Calibration Monitor** dialog box.

### Note

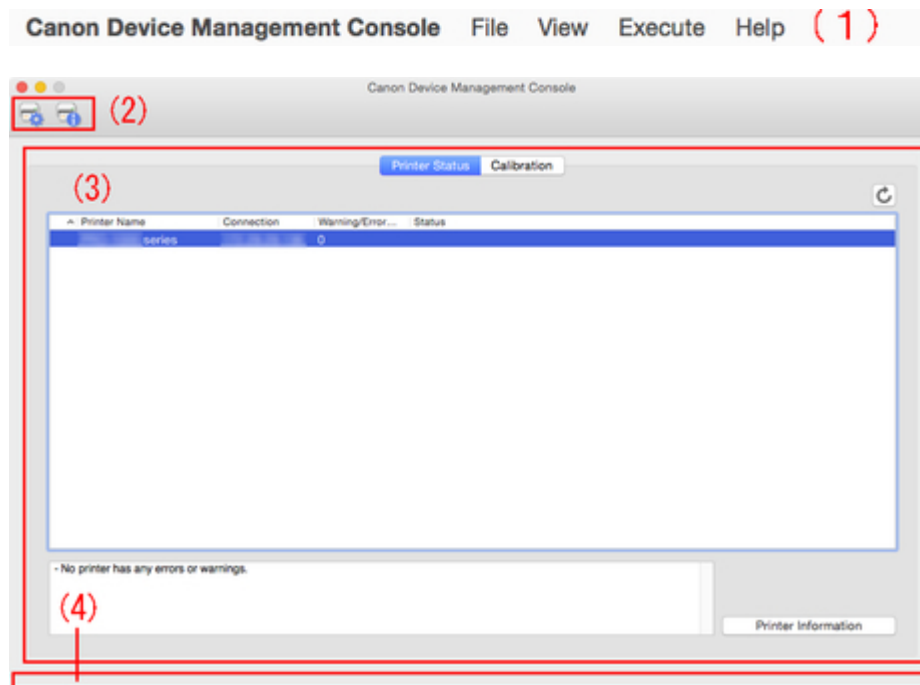
- If you want to stop the color calibration, select the printer and then click the **Cancel Calibration** button.
- To close this dialog box, click the  button.  
Color calibration cannot be canceled by closing this dialog box.
- You can also display this dialog box by clicking the **Calibration Monitor** button on the **Calibration** sheet.

## Description of Device Management Console Screen

- [Main Screen](#)
- [Printer Management Dialog Box](#)
- [Add Printer Dialog Box](#)
- [Printer Details Dialog Box](#)
- [Paper Status Dialog Box](#)
- [Calibration Dialog Box](#)
- [Calibration Monitor Dialog Box](#)

# Main Screen

The main screen of Device Management Console consists of a menu bar, toolbar, main area, and status bar.



■ (1) [Menu Bar](#)

■ (2) [Toolbar](#)

■ (3) [Main Area](#)

■ (4) [Status Bar](#)

## (1) Menu Bar

Select the menu items for the necessary operations.

■ [Main Screen \(Menu Bar\)](#)

## (2) Toolbar

Displays the buttons of functions frequently used in Device Management Console.

Use the **View** menu in the menu bar to show/hide the toolbar.



**button**

The **Printer Management** dialog box appears, allowing you to manage managed printers.



**button**

The **Printer Details** dialog box appears, allowing you to check the detailed information for the selected printer.



### (3) Main Area

The main area includes the **Printer Status** sheet and **Calibration** sheet.

Click **Printer Status** tab to display **Printer Status** sheet, and click **Calibration** tab to display **Calibration** sheet. You can also use the **View** menu in the menu bar to select the display.

■ [Main Screen \(Printer Status Sheet\)](#)

■ [Main Screen \(Calibration Sheet\)](#)

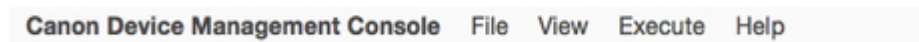
### (4) Status Bar

The Device Management Console settings status and printer communication status appear.

Use the **View** menu in the menu bar to show/hide the status bar.

## Main Screen (Menu Bar)

The menu bar on the main screen has the following menus.



■ [Canon Device Management Console Menu](#)

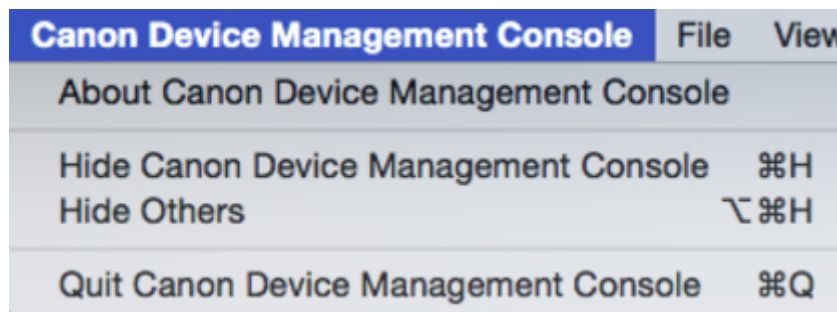
■ [File Menu](#)

■ [View Menu](#)

■ [Execute Menu](#)

■ [Help Menu](#)

### Canon Device Management Console Menu



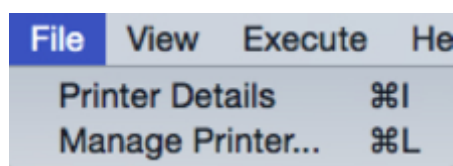
#### About Canon Device Management Console

You can check the Device Management Console version.

#### Quit Canon Device Management Console

Exits Device Management Console.

### File Menu



#### Printer Details

The **Printer Details** dialog box appears, allowing you to check the detailed information for the selected printer.

#### Manage Printer

The **Printer Management** dialog box appears, allowing you to manage managed printers.

## View Menu

View	Execute	Help
✓ Toolbars		⇧⌘T
✓ Status Bar		⌘/
Update		⇧⌘R
Update Calibration Link		⌘R
Printer Status		⇧⌘P
✓ Calibration		⇧⌘C
Paper List		▶
Paper Status		⌘D
Update Paper List		⇧⌘R

### Toolbars

Shows/hides the toolbar on the main screen.

When the check box is selected, the toolbar appears.

### Status Bar

Shows/hides the status bar on the main screen.

When the check box is selected, the status bar appears.

### Update

The printer status that appears on the **Printer Status** sheet is up to date.

### Update Calibration Link

Updates the printer list on the **Calibration** sheet.

### Printer Status/Calibration

Select **Printer Status** to display the **Printer Status** sheet.

Select **Calibration** to display the **Calibration** sheet.

### Paper List

Selects the media types displayed in the paper list on the **Calibration** sheet.

#### Calibrated

Only color-calibrated paper appears.

#### All

All paper appears.

#### Custom Paper

Only custom paper appears.

Custom paper is paper added with Media Configuration Tool.

To execute color calibration with custom paper, the calibration target for that paper must be created.

For details on custom paper and creating a calibration target, search for and refer to the "Media Configuration Tool Guide" from the home page of the Online Manual for your model.

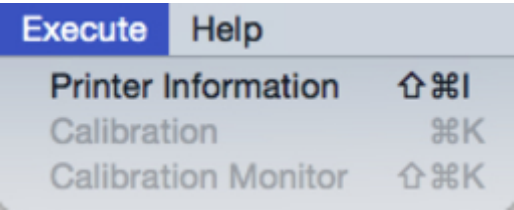
**Paper Status**

The **Paper Status** dialog box appears, allowing you to check the color calibration status of the selected paper.

**Update Paper List**

Updates the paper list on the **Calibration** sheet.

**Execute Menu**



**Printer Information**

The Web browser starts, and the main screen of the Remote UI for the selected printer appears.

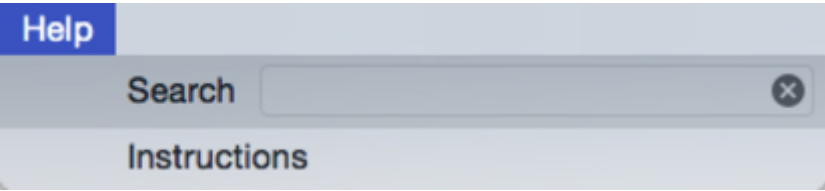
**Calibration**

The **Calibration** dialog box appears, allowing you to perform color calibration for the selected paper.

**Calibration Monitor**

The **Calibration Monitor** dialog box appears, allowing you to check the color calibration progress status.

**Help Menu**



**Instructions**

The Online Manual appears.

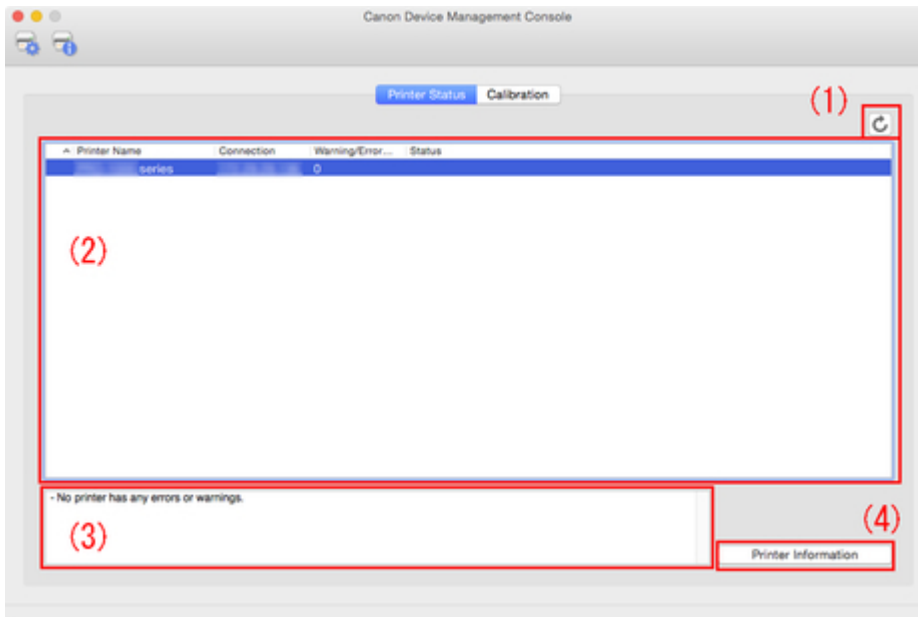
## Main Screen (Printer Status Sheet)

Use the **Printer Status** sheet to monitor the status of managed printers.

### ▶▶▶▶Note

- If the printer you want to manage is not displayed, use the **Printer Management** dialog box to register the printer.

■ [Registering Printer](#)



■ [\(1\) Printer Status Update Area](#)

■ [\(2\) Printer Status Display Area](#)

■ [\(3\) Message Area](#)

■ [\(4\) Advanced Printer Information Area](#)

### (1) Printer Status Update Area



button

Updates the printer status.

### (2) Printer Status Display Area

The status for each printer appears.

### ▶▶▶▶Note

- Click the heading to sort by clicked item.

### Warning / Error Icons

The icons below appear to the left of **Printer Name** when a printer warning or error occurs.

## »»»Note

- For details on warnings and errors, click the **Printer Information** button to display Remote UI, or search for and refer to "Troubleshooting" from the home page of the Online Manual for your model.



A warning has occurred.



An operator error has occurred.



Information about the remaining amount of ink, etc.



An error requiring repair has occurred.

### **Printer Name**

The name of the printer appears.

### **Connection**

Displays the Bonjour name or IP address of printers connected via the network and the connection port name of printers connected via USB.

### **Warning/Error Count**

The number of warnings and errors occurring appear.

### **Status**

The simplified status of the printer appears. If there are multiple warnings and errors, the highest priority one appears.

## **(3) Message Area**

Messages for the status of all managed printers appear.

## **(4) Advanced Printer Information Area**

### **Printer Information button**

The Web browser starts, and the main screen of Remote UI for the selected printer appears, allowing you to check the printer information details.

## »»»Important

- You cannot view detailed information about a printer with Remote UI for a printer connected with USB or IPv6.

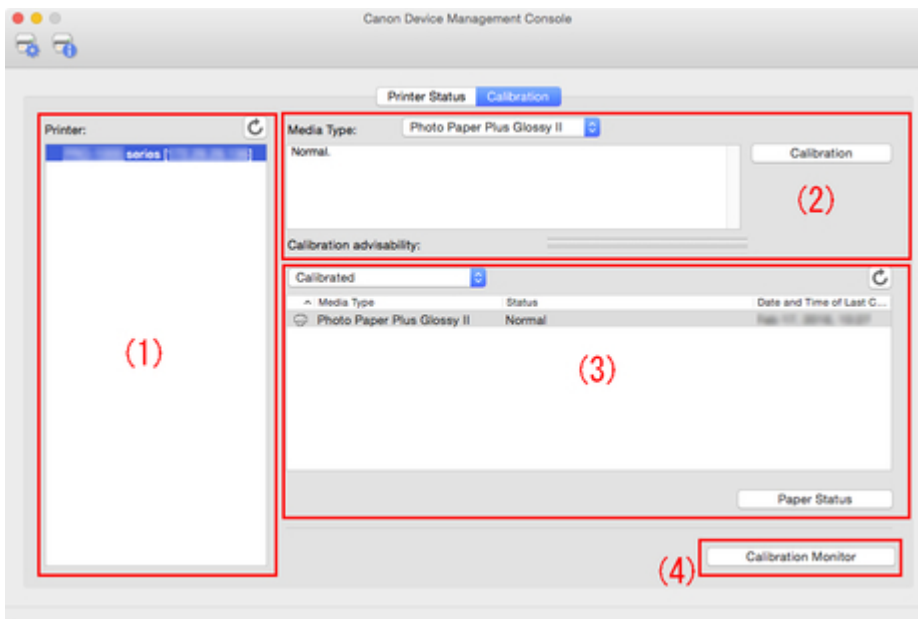
## Main Screen (Calibration Sheet)

Use the **Calibration** sheet to execute color calibration for the managed printer and to check the color calibration status.

### ▶▶▶Note

- If the printer you want to manage is not displayed, use the **Printer Management** dialog box to register the printer.

■ [Registering Printer](#)



■ [\(1\) Printer List Area](#)


■ [\(2\) Execute Color Calibration Area](#)

■ [\(3\) Color Calibration Execution Log Area](#)


■ [\(4\) Color Calibration Progress Status Area](#)

### (1) Printer List Area

The managed printers are organized and displayed by color calibration status.

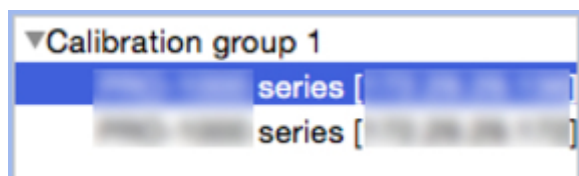
Click the  button to update the printer list.

### ▶▶▶Note

- A warning related to color calibration has occurred on printers with  displayed.  
The error details appear in the guide message area of "[\(2\) Execute Color Calibration Area](#)".
- Printers that do not support color calibration will not be listed.

In Device Management Console, multiple printers that can print with the same color are called calibration-linked printers.

Calibration-linked printers are grouped with the same calibration group name and displayed.



### Important

- Calibration link is performed for multiple printers that meet the following conditions.
  - The printer belongs to the same series that supports calibration link.
  - The same media type is selected in **Calibration** sheet > **Media Type** on the main screen.  
For models for which **Media Type** cannot be selected, the same media type is loaded in the printer.
- Color calibration is performed at least once for each printer with the above paper.

### Note

- Move the mouse pointer over **Calibration group** to display the media type to be grouped.
- Double-click **Calibration group** to open and close the Calibration group tree.

## (2) Execute Color Calibration Area



### Media Type

Select a media type supported by the printer.

### Important

- Depending on the model used, displays only the media type loaded in the printer.

### (2-1) Guide message area

Messages related to color calibration appear.

### Calibration button

The **Calibration** dialog box appears, allowing you to perform color calibration.

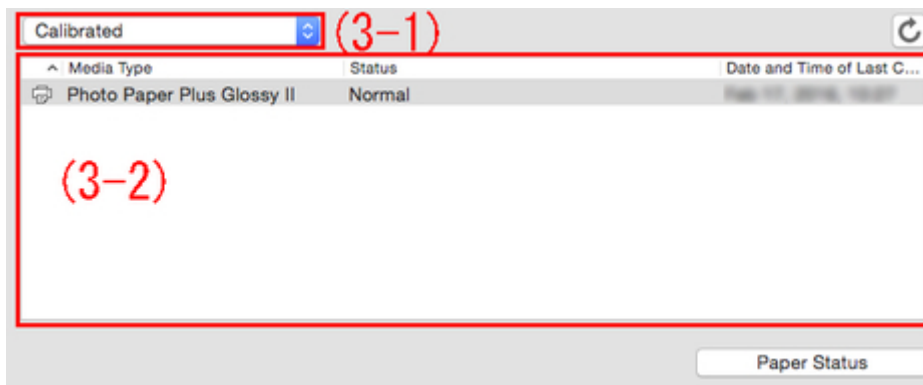
### Calibration advisability

Displays the advisability for executing color calibration. The progress bar grows until the time when calibration is recommended.

## (3) Color Calibration Execution Log Area

The color calibration execution log for each paper appears.





### (3-1) Paper list display conditions

From the drop-down list, select the criteria for displaying items in the paper list.

#### **Calibrated**

Only color-calibrated paper appears.

#### **All**

All paper appears.

#### **Custom Paper**

Only custom paper appears.

Custom paper is paper added with Media Configuration Tool.

To execute color calibration with custom paper, the calibration target for that paper must be created.

For details on custom paper and creating a calibration target, search for and refer to the "Media Configuration Tool Guide" from the home page of the Online Manual for your model.



#### **button**

Updates the paper list.

### (3-2) Paper list

The color calibration execution log for each paper appears.

#### **▶▶▶Note**

- Click the heading to sort by clicked item.



- appears for paper displayed in **Media Type** of "[\(2\) Execute Color Calibration Area](#)".

#### **Media Type**

The paper name acquired from the printer appears.

#### **Status**

The status and guide messages related to color calibration appears.

#### **▶▶▶Note**

- If you delete or hide the paper used for the color calibration in Media Configuration Tool, that paper will be displayed as **Unknown Paper** in **Status** column.  
In such cases, use different paper and carry out the color calibration.

### **Date and Time of Last Calibration**

The date color calibration was last performed appears.

### **Paper Status button**

The **Paper Status** dialog box appears, allowing you to check the color calibration status of the selected paper.

## **(4) Color Calibration Progress Status Area**

### **Calibration Monitor button**

The **Calibration Monitor** dialog box appears, allowing you to check the color calibration progress status.

### **Important**

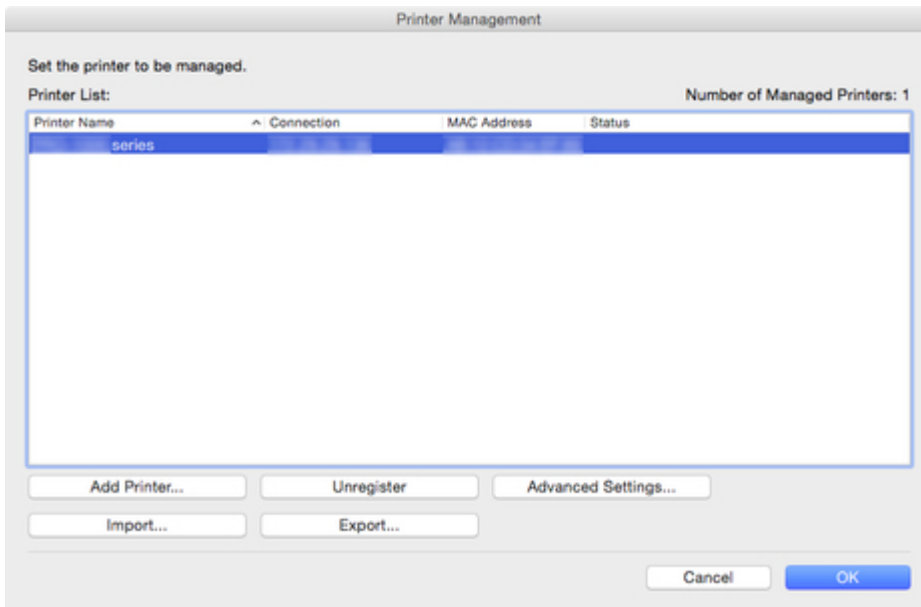
- You cannot check the progress status for the following color calibration.
  - Color calibration performed from the operation panel of a printer
  - Color calibration of a printer connected by USB (for model that does not support roll paper)

## Printer Management Dialog Box

You can register and delete managed printers .

You can also change a printer's display name, and export and import information for managed printers.

Click  button or select **Manage Printer** from **File** menu to display **Printer Management** dialog box.



### Printer List

Displays the list of managed printers.

### Number of Managed Printers

Displays the total number of printers that appear in **Printer List**.

### Printer Name

The printer name appears.

### Connection

Displays the Bonjour name or IP address of printers connected via the network and the connection port name of printers connected via USB.

### MAC Address

The MAC address of the printer appears.

### »»»Note

- For printers that support wired and wireless LAN, the MAC address that appears here is the wired LAN MAC address.

### Status

The printer support status appears.

### Add Printer button

The **Add Printer** dialog box appears, allowing you to register a managed printer.

### Unregister button

The printer selected in **Printer List** is deleted.

#### ▶▶▶Note

- You cannot click this button if a printer is not selected.

### Advanced Settings button

The **Advanced Printer Settings** dialog box appears, allowing you to change the printer display name.

#### ▶▶▶Note

- You cannot click this button if a printer is not selected.

### Import button

Imports the managed printer(s) from a file.

The managed printers that are imported in **Printer List** appears.

#### ▶▶▶Important

- When importing a printer connected with IPv6, you must turn on the printer and establish communications.

If you import while communications are not established, **Not Found** appears under **Status** in the **Printer List**, and the printer cannot be registered. If this happens, temporarily delete the printer from the **Printer List** with the **Unregister** button, turn on the printer, and import again after the communications have been established.

### Export button

Exports the managed printers displayed in **Printer List** to a file.

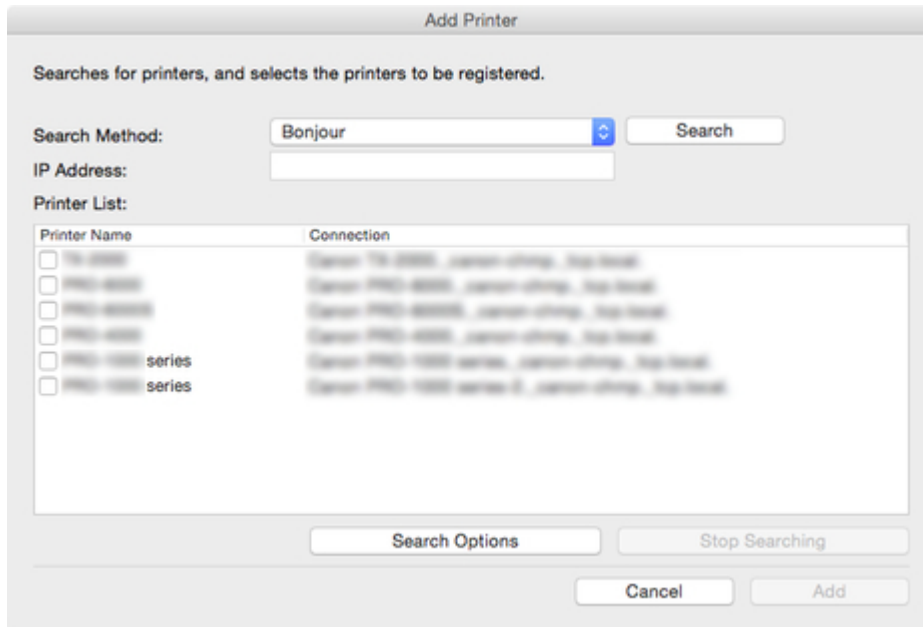
#### ▶▶▶Note

- A printer connected by USB cannot be exported.

## Add Printer Dialog Box

You can search for a printer to be managed and register it to the list of managed printers.

Click **Add Printer** button on **Printer Management** dialog box to display **Add Printer** dialog box.



### Search Method

Select the printer search method.

#### Bonjour

Search for printers connected by Bonjour.

#### Auto (IPv4/IPv6)

Searches for IPv4 and IPv6 printers.

#### IPv4

Searches by specifying the IPv4 IP address in **IP Address**.

#### IPv6

Searches by specifying the IPv6 IP address in **IP Address**.

#### USB

Searches for printers connected via USB.

### IP Address

When **IPv4** or **IPv6** is selected in **Search Method**, enter the IP address of the printer for which to search.

### Search button

Starts printer search using the selected search method.

### Printer List

The printer search result appears.

#### Printer Name

The model names of the printers found appears.

To register a printer, select the check box next to the model name.

**Connection**

Displays the Bonjour name or IP address of printers connected via the network and the connection port name of printers connected via USB.

**Search Options Button**

Opens the **Search Options** dialog box.

Configure this when searching for a specific SNMP community.

**Stop Searching button**

Click to stop the search.

**Add button**

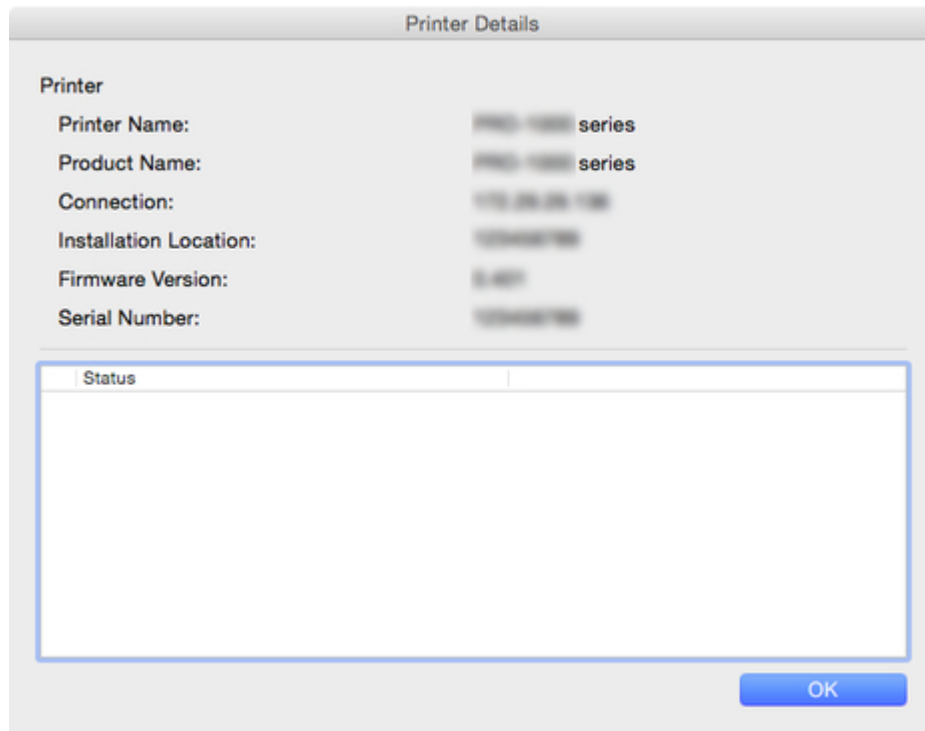
When the check box is selected, the printer is registered to the managed printers, and the **Add Printer** dialog box closes.

## Printer Details Dialog Box

The printer details of the selected printer appears.



Click  button or select **Printer Details** from **File** menu to display **Printer Details** dialog box.



### Printer Name

Displays the name of the printer that appears in Device Management Console.

### Product Name

The product name of the printer appears.

### Connection

Displays the IP address of printers connected via the network and the connection port name of printers connected via USB.

### Installation Location

The installation location of the printer appears.

#### ▶▶▶Note

- Nothing appears if no information can be acquired from the printer.
- Depending on the model used, nothing may appear.

### Firmware Version

The version of the firmware installed on the printer appears.

#### ▶▶▶Note

- Nothing appears if no information can be acquired from the printer.

**Serial Number**

The serial number of the printer appears.

**Status**

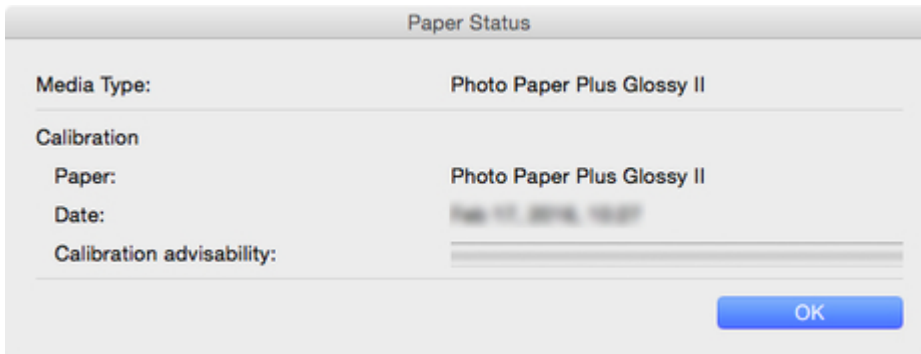
The simplified status of the printer appears.



## Paper Status Dialog Box

The color calibration status for the paper selected in the paper list appears.

Click **Paper Status** button on **Calibration** sheet or select **Paper Status** from **View** menu to display **Paper Status** dialog box.



### Media Type

The name of the paper selected in the paper list appears.

### Calibration

The information of the color calibration applied to the selected paper appears.

The information of the selected paper only when color calibration has been executed for the selected paper appear.

#### Paper

The paper name only when color calibration is executed appear.

#### Date

The date color calibration was executed appear.

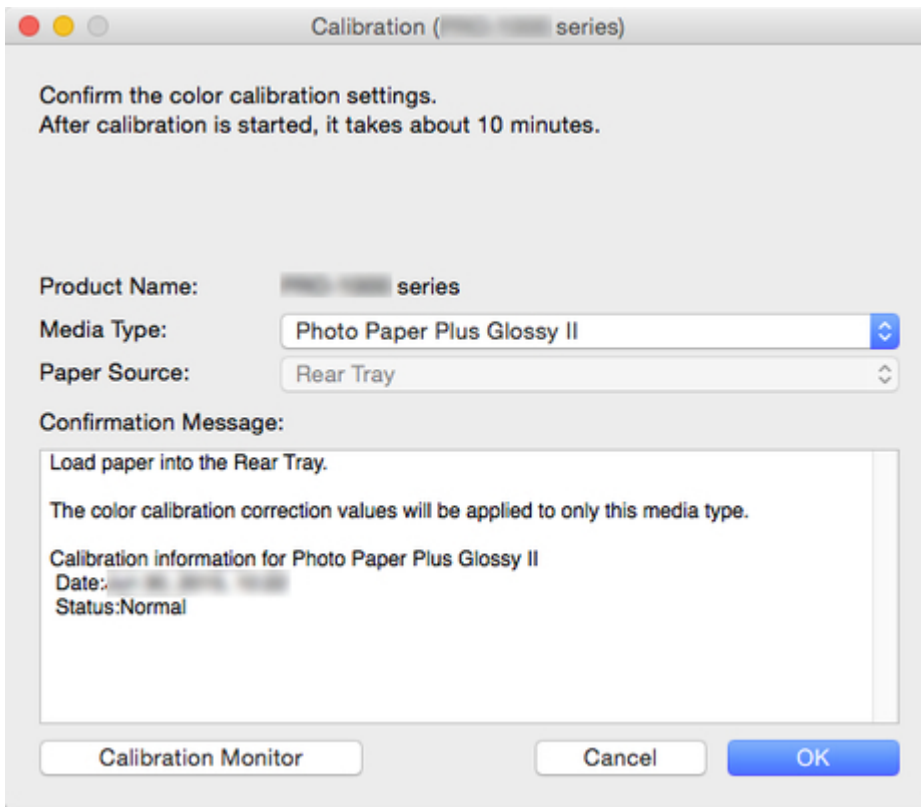
#### Calibration advisability

Displays the advisability for executing color calibration. The progress bar grows until the time when calibration is recommended.

## Calibration Dialog Box

You can check the color calibration status and perform color calibration.

Click **Calibration** button on **Calibration** sheet or select **Calibration** from **Execute** menu to display **Calibration** dialog box.



### Media Type

Select a media type supported by the printer.

#### ▶▶▶Note

- The media type for the paper fed on the printer appears depending on your model.

### Paper Source

Displays the paper source that can be used to perform color calibration with the media that appears in **Media Type**.

#### ▶▶▶Note

- Depending on your model, you can select the **Paper Source**.
- If you are using a PRO-1000 or PRO-500 model, only the rear tray can be used as the paper source for color calibration.

### Confirmation Message

Messages related to color calibration appear.

**Calibration Monitor button**

The **Calibration Monitor** dialog box appears, allowing you to check the color calibration progress status.

**OK button**

The color calibration starts and the **Calibration Monitor** dialog box appears.

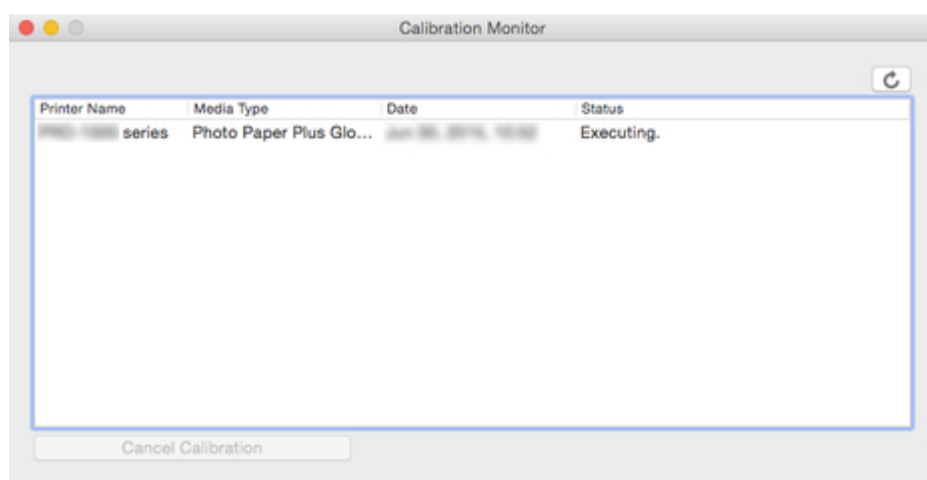
## Calibration Monitor Dialog Box

You can check the progress status of the color calibration.

Click **Calibration Monitor** button on **Calibration** sheet, **Calibration Monitor** or **OK** button on **Calibration** dialog box, or select **Calibration Monitor** on **Execute** menu to display **Calibration Monitor** dialog box.

### Important

- You cannot check the progress status for the following color calibration.
  - Color calibration performed from the operation panel of a printer
  - Color calibration of a printer connected via USB (except when displayed with the **OK** button on the **Calibration** dialog box on a model that does not support roll paper)



**button**

The progress status of color calibration will be updated.

### Printer Name

The printer name appears.

### Media Type

The media type appears.

### Date

The date when color calibration was started appears.


### Status

The progress status of color calibration appears.

### Cancel Calibration button

Stops color calibration on the selected printer.

### Note

- To close this dialog box, click the  button or select **Quit Canon Calibration Tool** from the **Canon Calibration Tool** menu.
- Color calibration cannot be canceled by closing this dialog box.