



# imageRUNNER ADVANCE Direct Enlargement Copy

You can enlarge and print an original (e.g. A4-sized) on a large-sized sheet without using a computer.

Send an original scanned using a multifunction copier (imageRUNNER ADVANCE) to perform enlarge printing using a large format printer (imagePROGRAF).

## Compatible Models

- **Large format printer**  
imagePROGRAF PRO series
- **Multifunction copier**  
imageRUNNER ADVANCE series

## Table of Contents

1. [Settings for Large Format Printer \(imagePROGRAF\)](#)
2. [Settings for Multifunction Copier \(imageRUNNER ADVANCE\)](#)
3. [Enlarge Printing of Scanned Data](#)
4. [If Warning Screen Appears on Web Browser](#)

## Settings for Large Format Printer (imagePROGRAF)

Perform settings on the large function printer (imagePROGRAF).

You need to perform settings both on the Remote UI and operation panel.

### **Step 1** Enable FTP using Remote UI.

#### **Note**

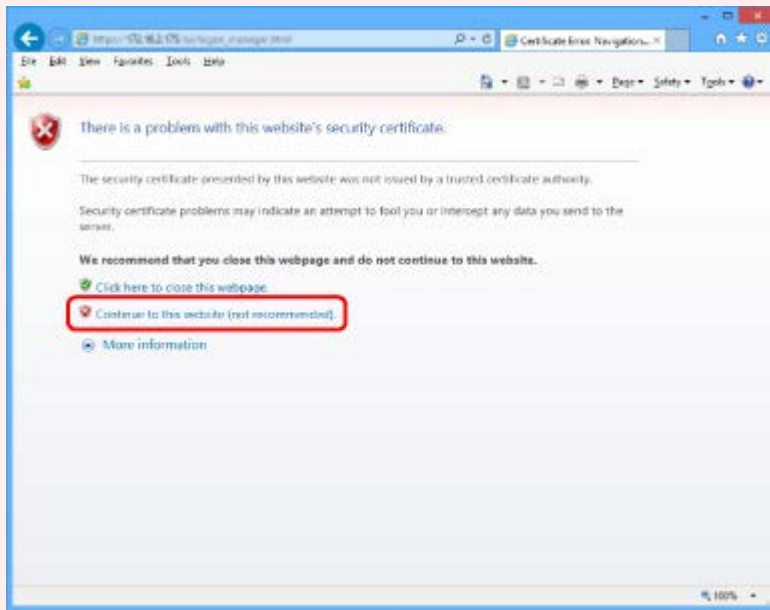
- Remote UI is a software that enables you to perform operations, which are usually performed on the printer's operation panel, using a Web browser over a network.
- For more on Remote UI or compatible OS/web browser, refer to printer's manual.

1. Check printer's IP address.  
For details, refer to printer's manual.
2. Open web browser on your computer.

3. Enter printer's IP address to access to Remote UI.

### Important

- If you access to Remote UI for the first time, a message to warn you that the secure connection is not guaranteed appears on the web browser. Select **Continue to this website** (for Internet Explorer).



- For a web browser other than Internet Explorer, see [If Warning Screen Appears on Web Browser](#).

The screen below appears.



4. If you display Remote UI for the first time, select **For secure communication**.

Download the root certificate, and then register it.

For details, refer to printer's manual.

### Note

- Once you register the root certificate to the web browser, this step is not necessary after the next time.
- If the root certificate is not registered, a message to warn you that the secure connection is not guaranteed may appear.

5. Select **Log on**.

The screen below appears.



6. Enter printer's password.

Ask the administrator for the password.

►► **Note**

- The printer serial number is used for the password at the time of purchase. Check it using the operation panel of the printer. For details, refer to printer's manual.

7. Select **OK**.

8. Select **System info and LAN settings** on displayed screen.

9. Select **LAN settings**.

10. Select **Other settings**.

11. Select **Yes**.

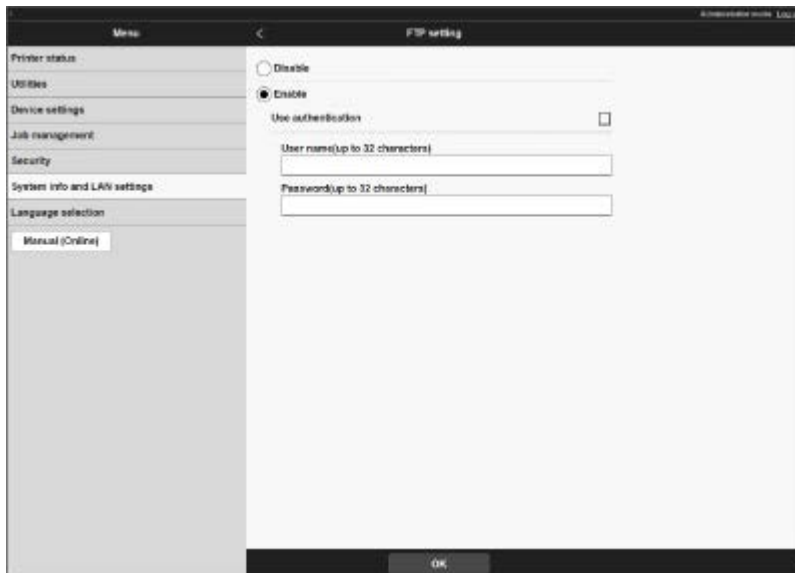
The screen below appears.



12. Select **FTP setting**.

13. Select **Enable**.

The screen below appears.



14. Select **Use authentication** check box and enter user name and password.
15. Select **OK**.

**Please wait a while.** appears and returns to the startup screen.

16. Close web browser.

## **Step 2** Perform enlarge settings on the operation panel of the printer.



1. Select **Device settings** on HOME screen.

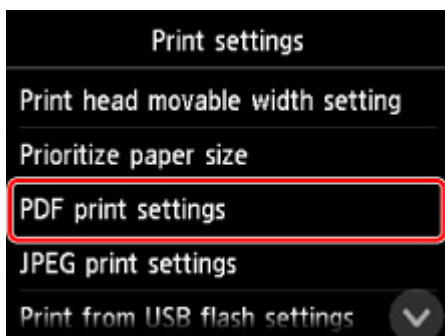
For more on the HOME screen operation, refer to printer's manual.

The **Device settings** screen appears.

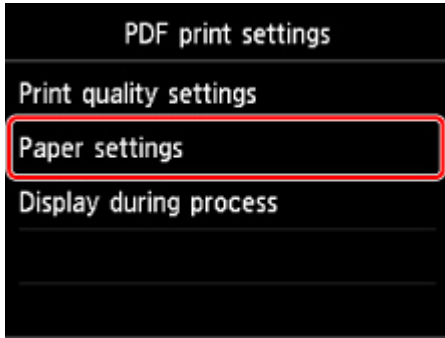
2. Select **Print settings**.



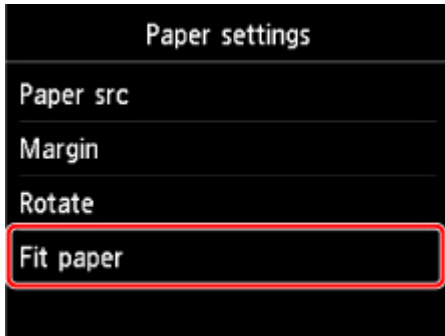
3. Select **PDF print settings**.



4. Select **Paper settings**.



5. Select **Fit paper**.



6. Select **ON**.



The original is printed so that it fits in the paper size specified in **Paper src**.

## »» Note

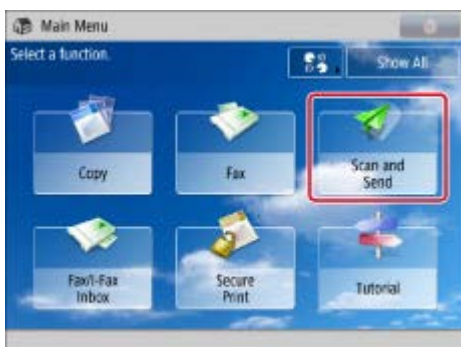
- Select an image quality in **Print quality settings** as necessary.
- You can specify the orientation of the image from **Rotate**.

## Settings for Multifunction Copier (imageRUNNER ADVANCE)

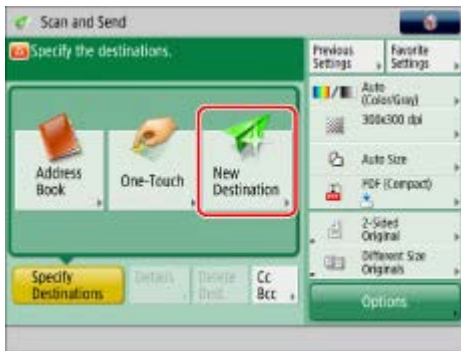
Perform settings on your multifunction copier (imageRUNNER ADVANCE) to prepare for sending data to the printer.

### Step 1 Specify the destination

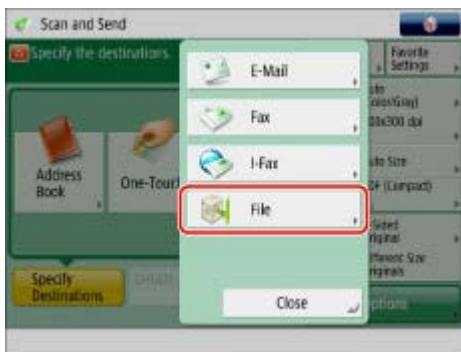
1. Select [Scan and Send].



2. Select [New Destination] on displayed screen.



3. Select [File] on displayed screen.



4. Select [FTP] from [Protocol] drop-down list.



5. Enter setting items.



Enter the printer IP address on [Host Name].

Enter the value specified on the printer on [User Name] and [Password].

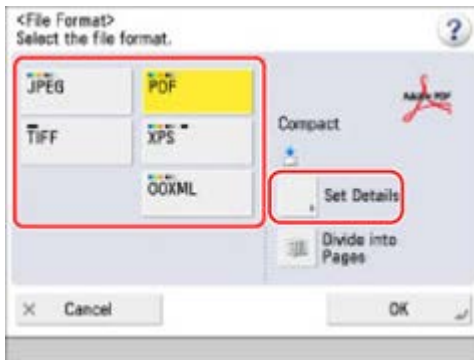
6. Select [OK].

## Step 2 Specify the scan settings

1. Select [PDF] for [File Format].



2. Select [Set Details] on displayed screen.



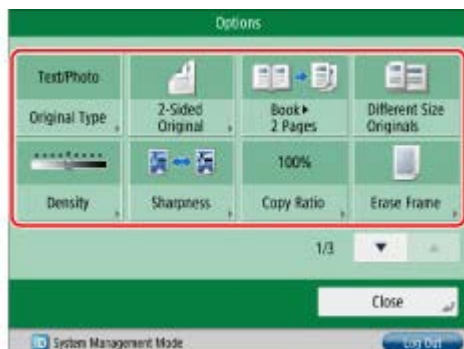
Uncheck [Compact] and [Encrypt].

3. Select [OK].
4. Specify the settings as necessary.



Recommended resolution is 300x300dpi.

Press [Options] to select useful scan modes. You can also set combinations of scan modes.



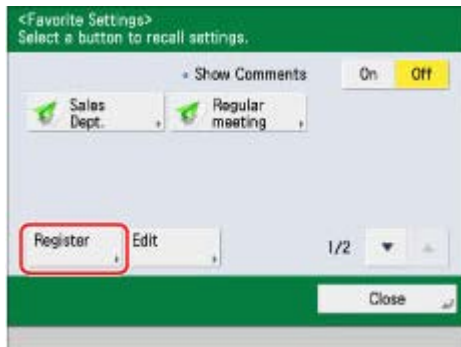
Press ▲ or ▼ button to display the desired mode.

### Step 3 Register favorite settings

1. Select [Favorite Settings].



2. Select [Register] on displayed screen.



3. Select button to register on displayed screen and select [Next].



4. Select [Name].
5. Enter name and select [OK].  
As an example, enter "A4->A1" here.
6. Select [Comment].
7. Enter comment and select [OK].
8. Select [OK].
9. Select [Close].

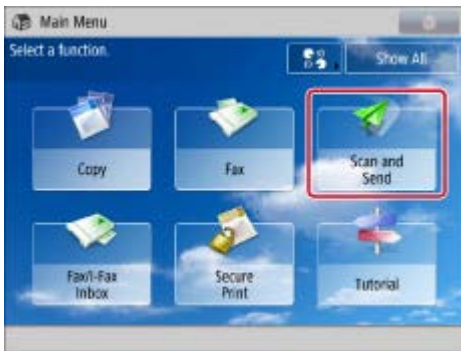
### Note

- If you want to edit the name or comment for the registered button, select [Rename] and edit the settings as necessary.
- If you set [Show Comments] to [On], the registered comments are displayed.



## Enlarge Printing of Scanned Data

1. Load a document on platen glass or in feeder of your multifunction copier (imageRUNNER ADVANCE).
2. Select [Scan and Send].



3. Select [Favorite Settings] on displayed screen.




4. Select desired Favorite Settings button.

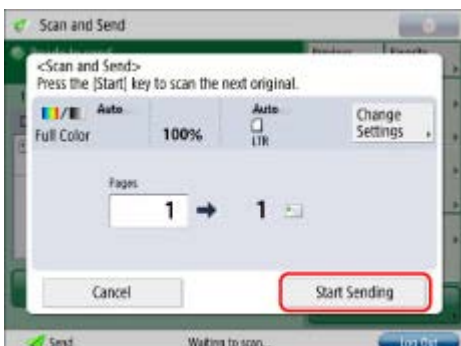


5. Select [Yes] on displayed screen.

6. Press  (Start).

If you are placing your originals on the platen glass, press  (Start) to scan each original.

7. When scanning is complete, select [Start Sending] on displayed screen.



Scanned originals are sent to the printer and printing starts.

## If Warning Screen Appears on Web Browser

If you access to Remote UI for the first time, a message to warn you that the secure connection is not guaranteed appears on the web browser.

This section describes the measure to take for Internet Explorer, Google Chrome, Mozilla Firefox, and Safari respectively.

⇒ [For Internet Explorer:](#)

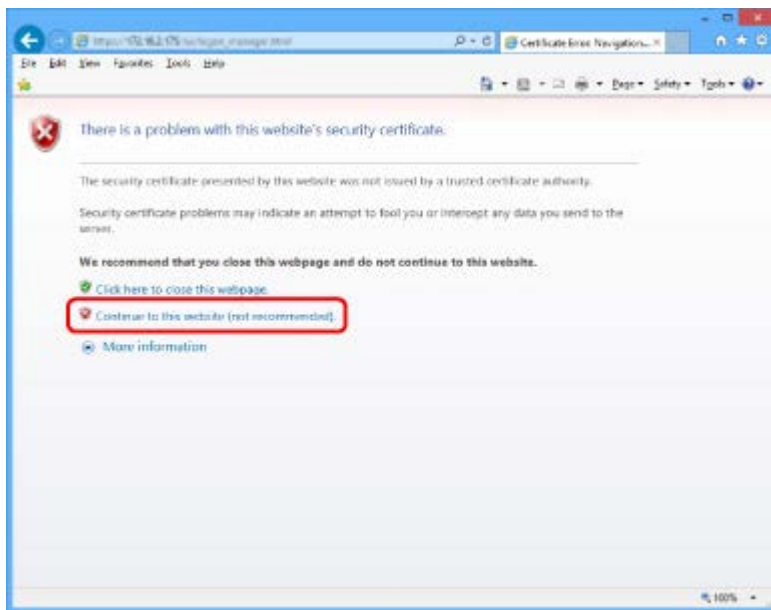
⇒ [For Google Chrome:](#)

⇒ [For Mozilla Firefox:](#)

⇒ [For Safari:](#)

### For Internet Explorer:

1. Select **Continue to this website** on displayed screen.



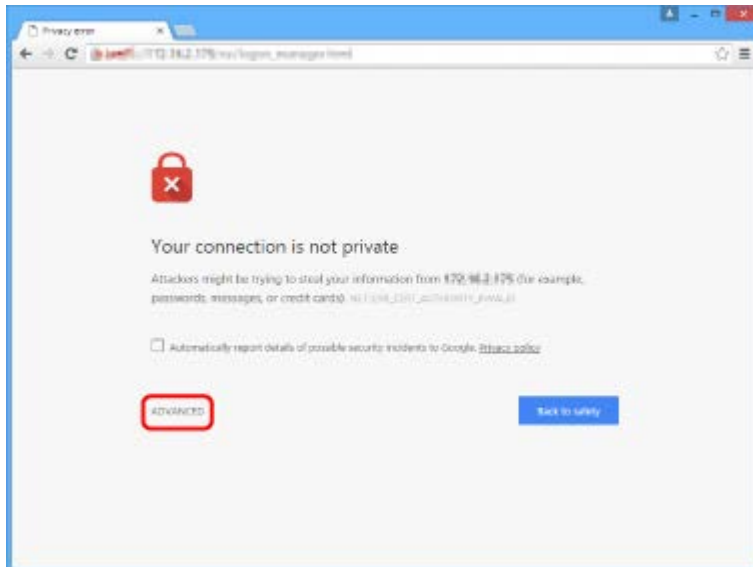
The Remote UI screen appears.

### ►►► Note

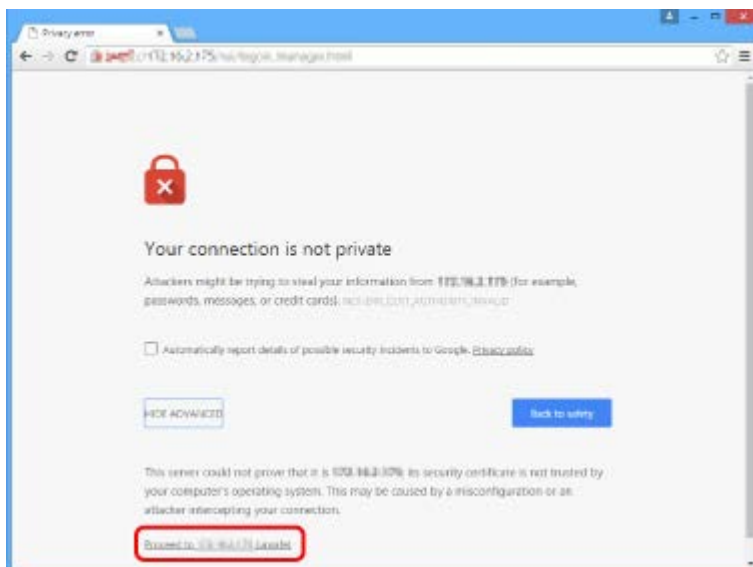
- If you download and register the root certificate to the web browser, the message screen does not appear after the next time. For details, refer to printer's manual.

## For Google Chrome:

1. Select **Advanced** on displayed screen.



2. Select **Proceed to XXX.XXX.XXX.XXX**. ("XXX.XXX.XXX.XXX" is printer's IP address.)



The Remote UI screen appears.

### ►►► Note

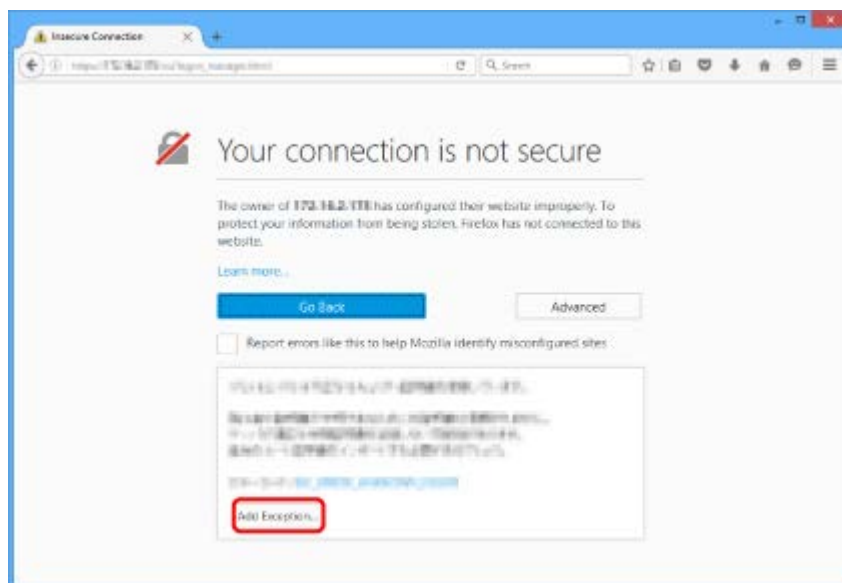
- If you download and register the root certificate to the web browser, the message screen does not appear after the next time. For details, refer to printer's manual.

## For Mozilla Firefox:

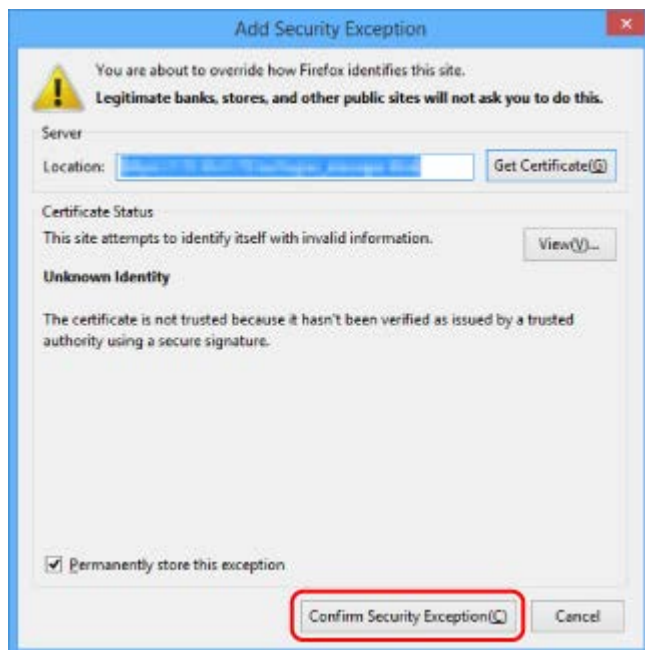
1. Select **Advanced** on displayed screen.



2. Select **Add Exception....**



3. Select **Confirm Security Exception** on displayed screen.



The Remote UI screen appears.

### ►► Note

- If you download and register the root certificate to the web browser, the message screen does not appear after the next time. For details, refer to printer's manual.

### For Safari:

1. Select **Continue** on displayed screen.



The Remote UI screen appears.

### ►► Note

- If you download and register the root certificate to the web browser, the message screen does not appear after the next time. For details, refer to printer's manual.