

Please be sure to read the “Safety Precautions” section for correct use. After reading this Installation Guide, keep it in a readily accessible location for future reference.

* Some cameras are not available in certain countries or regions.

⚠ Caution

Request a professional installer for all installation work. Never try to install the camera yourself. Doing so may result in unforeseen accidents such as dropping the camera or electric shock.

- Check Included Items
- Camera

Setup CD-ROM

Safety Wire, Screws (M4) x 1

RJ45 Coupler

I/O Interface Cable (BK2-0078-000)

Waterproofing tape

Template

Installation Guide (This document)

Warranty Card

Dedicated wrench

Waterproofing explanation sheet

Symbols Indicating Camera Model

S30VE

:



VB-S30VE

S800VE

:

VB-S800VE

Only for European Union and EEA (Norway, Iceland and Liechtenstein)



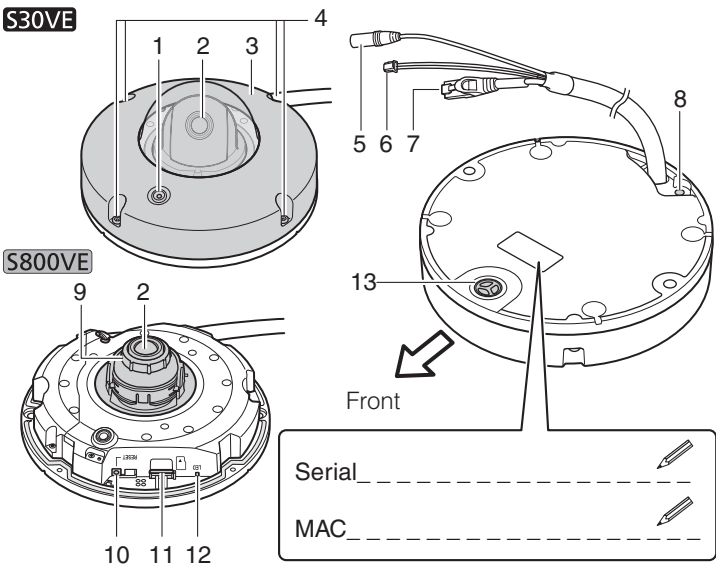
These symbols indicate that this product is not to be disposed of with your household waste, according to the WEEE Directive (2012/19/EU), the Battery Directive (2006/66/EC) and/or national legislation implementing those Directives.

If a chemical symbol is printed beneath the symbol shown above, in accordance with the Battery Directive, this indicates that a heavy metal (Hg = Mercury, Cd = Cadmium, Pb = Lead) is present in this battery or accumulator at a concentration above an applicable threshold specified in the Battery Directive.

This product should be handed over to a designated collection point, e.g., on an authorized one-for-one basis when you buy a new similar product or to an authorized collection site for recycling waste electrical and electronic equipment (EEE) and batteries and accumulators. Improper handling of this type of waste could have a possible impact on the environment and human health due to potentially hazardous substances that are generally associated with EEE. Your cooperation in the correct disposal of this product will contribute to the effective usage of natural resources.

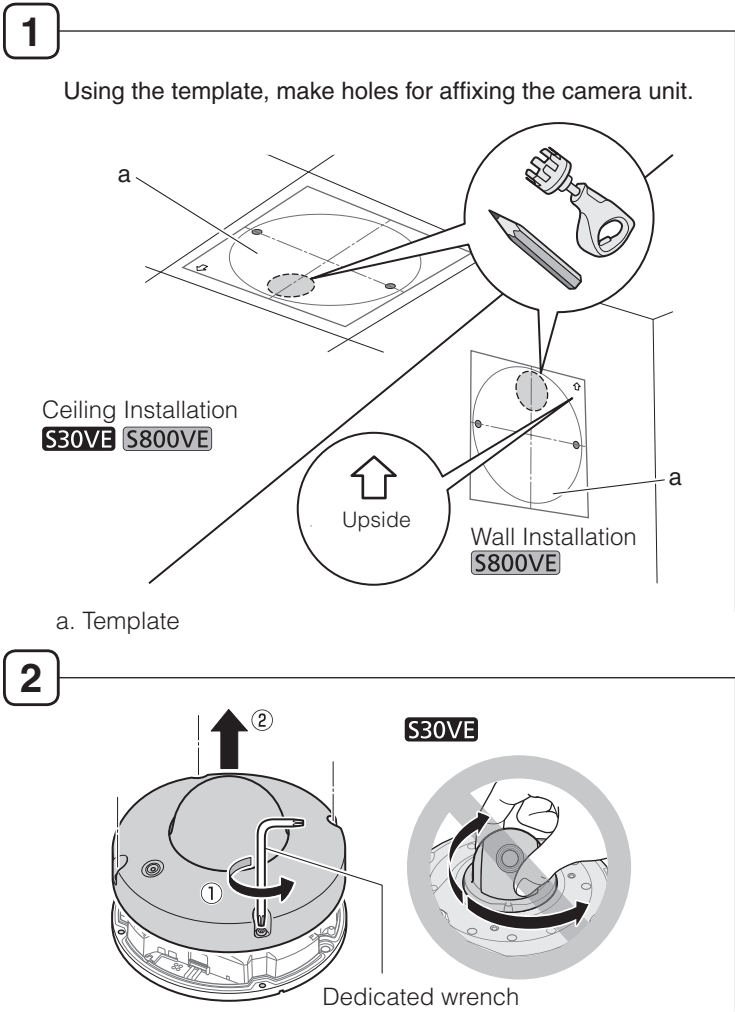
For more information about the recycling of this product, please contact your local city office, waste authority, approved scheme or your household waste disposal service or visit www.canon-europe.com/weee, or www.canon-europe.com/battery.

Part Names

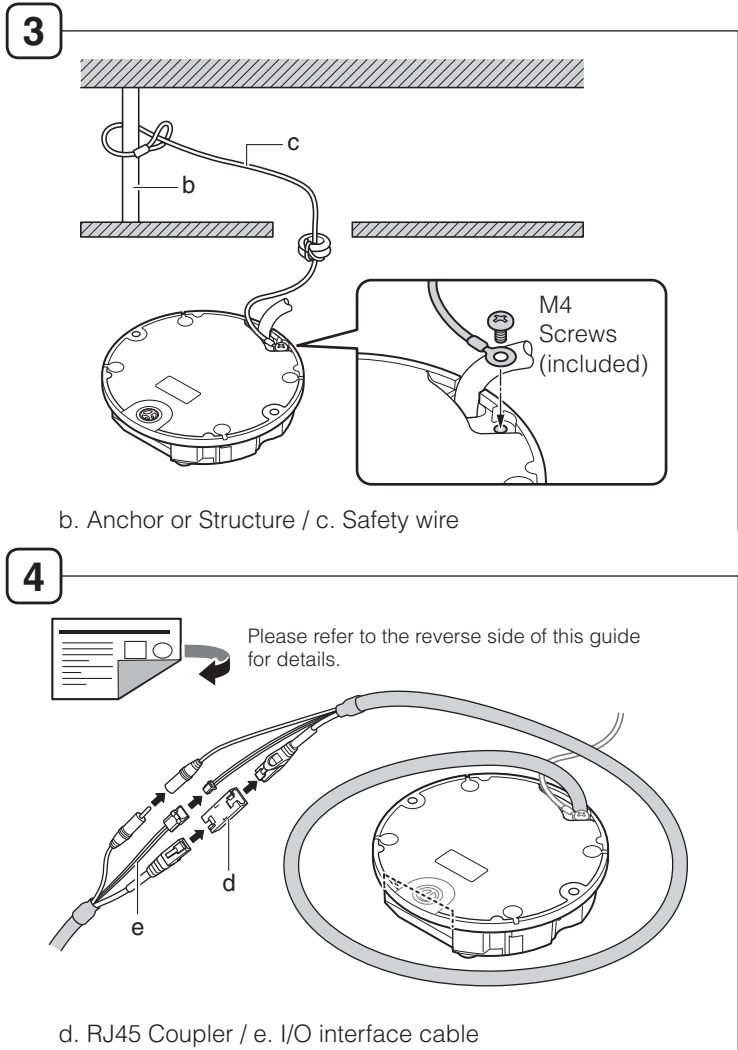
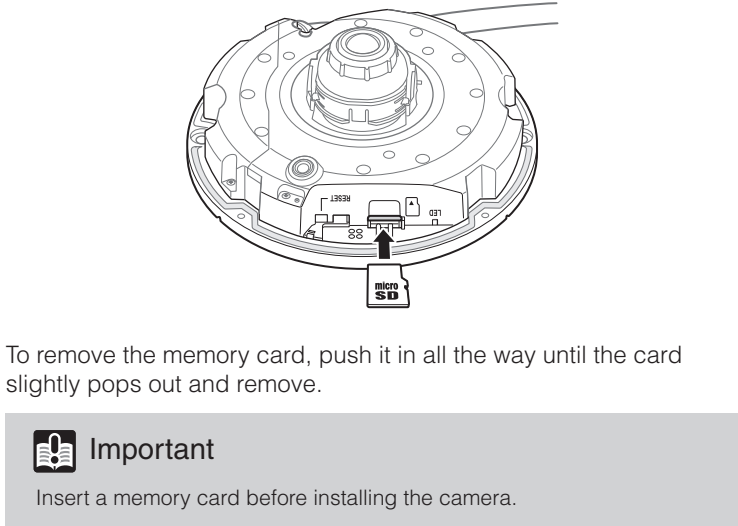


1. Microphone / 2. Camera head / 3. Top cover / 4. Top cover lock screw / 5. Audio output terminal / 6. External device I/O terminal / 7. 100Base-TX LAN Connector / 8. Safety wire attachment / 9. Rotation dial S800VE / 10. Reset switch (please refer to the “Operation Guide”) / 11. Memory card slot / 12. LED (Please refer to the “Operation Guide”) / 13. Vent

Installing the Camera



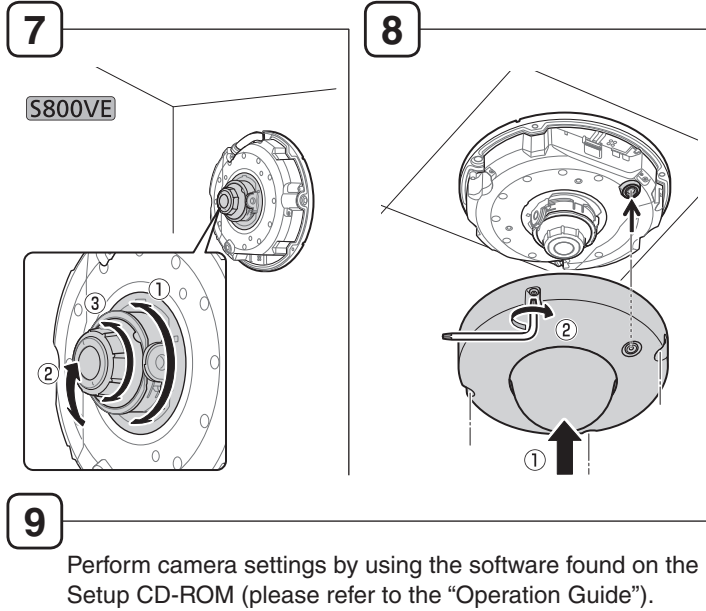
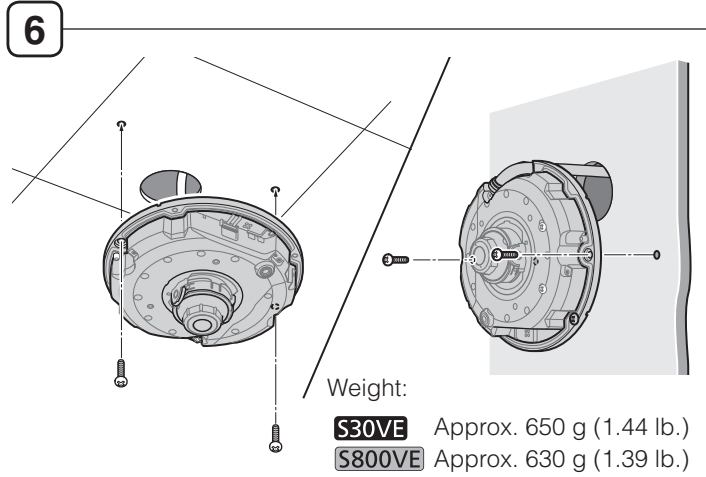
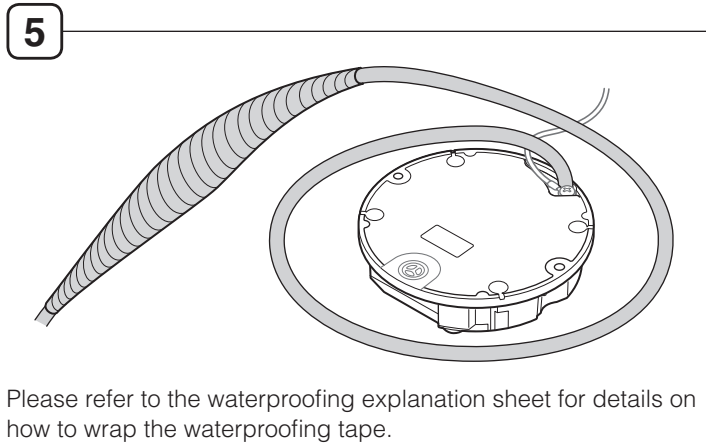
If Using a Memory Card



Important S30VE

The camera head will move and make noise when the power is turned on.

- Do not touch the camera head.
- After the head stops moving, mount the camera.



Accessories

The following accessories can be purchased separately as necessary. Some accessories are not available in certain countries or regions.

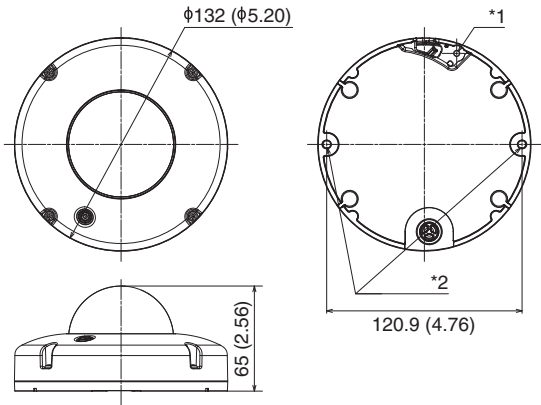
Pendant Mounting Kit PC30VE-VB

Dedicated accessory used to install the camera to the end of pipe that extends from high ceilings, such as in big-box stores.

Conduit Box CB30VE-VB

Dedicated accessory, when using composite pipe for installation, to connect composite pipe and the camera. Cables cannot be stored in the conduit box.

External Dimensions



*1 M4 (safety wire fastening screw hole)

*2 $2\text{-}4.8 \times 4.3$ (0.19 \times 0.17)

elliptical mounting hole (for installation)

Unit: mm (in.)

Connecting the Camera

To prevent cable connections from shorting out, wrap each individual connection with insulating tape, and then wrap all of the cables with waterproofing tape.

Power Supply

Please refer to “Specifications” > “Others” > “Power Supply”.



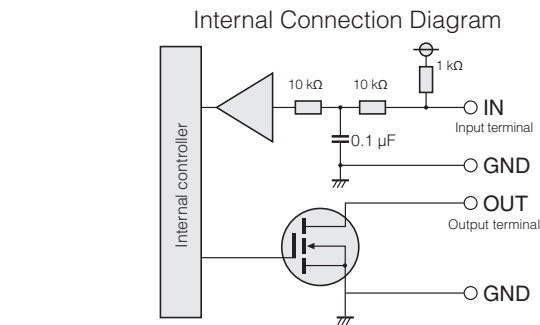
Important

- Check with your dealer for more information about PoE devices.
- Some PoE devices allow power limits for each port, but applying limits may interfere with performance. If using this type of PoE device, do not limit the operating power.
- Some PoE devices have total consumption power limits for ports, which can interfere with performance when multiple ports are in use. For more information, check the instruction guide for your PoE device.

External Device I/O Terminals

Use the included I/O interface cable to connect to external device input/output terminals.

- | | | | | | |
|---|---|---|----------|------------------------|-----|
| 1 | 2 | 3 | 1: BLUE | External device output | OUT |
| | | | 2: BLACK | GND | |
| | | | 3: GREEN | External device input | IN |



External Device Input Terminals (IN)

The external device input terminal consists of a positive terminal (IN) and negative terminal (GND). Connecting cables to the positive and negative terminals and opening or closing the circuit notifies the Viewer.



Important

When connecting sensors and switches, use those that have terminals which are isolated from internal power and GND.

External Device Output Terminals (OUT)

The external device output terminal consists of an OUT terminal and a GND terminal. Controls from the viewer can be used to open and close the circuit between the terminals. A MOSFET device is used for the output terminal.

Rating range for load connected to output terminals.

Rating between output terminals:

Maximum voltage 50 V DC

Continuous load current at or below 100 mA

On resistance: Below 1 Ω



Note

- The External Device I/O Terminal consists of three terminals (IN, OUT, and GND). The GND terminal serves as both the external device input GND and the external device output GND.
- The GND terminal is connected to the camera interior GND.
- When using the external device input and output at the same time, couple the GND wire from the input cable with the GND wire from the output cable, conforming to the rating range, and connect it to the GND terminal.

Audio Output Terminal LINE OUT (monaural output)

Connect the camera to a speaker with an amplifier. Audio can be sent to the speaker from the Viewer.

Output terminal: $\phi 3.5$ mm ($\phi 0.14$ in.) mini jack (monaural)

Output level: Max. 1 Vp-p

If the microphone and speaker are placed too close to each other, it can cause howling, however this can be eliminated by setting [Audio Communication Method] to [Half Duplex] (please refer to the “Operation Guide”).

Specifications

Please refer to the installation procedures or “Appendix - Specifications” for specifications not listed below.

Camera

Lens	S30VE 3.5x optical (4x digital zoom) zoom lens with auto focus S800VE Fixed focal length lens (4x digital zoom)
Viewing Angle	S30VE For 16:9 aspect ratios Horizontal: 77.1° (W) – 20.6° (T) Vertical: 40.2° (W) – 11.5° (T) For 4:3 aspect ratios Horizontal: 54.9° (W) – 15.4° (T) Vertical: 40.2° (W) – 11.5° (T) S800VE For 16:9 aspect ratios Horizontal: 93.8°, Vertical: 58.7° For 4:3 aspect ratios Horizontal: 75.0°, Vertical: 58.7°
Pan Angle Range	350° (±175°)
Tilt Angle Range	90° (ceiling-mounted position: -90° – 0°) When the horizontal direction of the camera is 0°
Rotation Angle Range	S800VE 180° (±90°)

Interface

Network Terminal*	LAN x 1 (RJ45, 100Base-TX (auto/full-duplex/half-duplex)) * Use a category 5 or better LAN cable, 100 m (328 ft.) or less in length.
Audio Input	Internal microphone
Audio Output Terminal (LINE OUT)	$\phi 3.5$ mm ($\phi 0.14$ in.) mini-jack connector (monaural)
External Device I/O Terminal	Input x 1, Output x 1
Memory Card	microSD Memory Card, microSDHC Memory Card, microSDXC Memory Card compatible.

Others

Operating Environment	Temperature Operating Temperature Range: -25°C – +50°C (-13°F – +122°F) Start-up Temperature Range: -10°C – +50°C (+14°F – +122°F) Humidity: 5% – 85% (without condensation) Storage Environment Temperature: -30°C – +60°C (-22°F – +140°F) Humidity: 5% – 90% (without condensation) Installation S30VE Ceiling mount – Canon will not guarantee proper operation if the cameras are installed on surfaces where the angle is more than ±5° from horizontal or on walls, because this will put a heavy load onto sliding mechanical parts and may affect durability. S800VE Ceiling mount/Surface mount PoE function: PoE power sourcing equipment (requests 15.4 W) (IEEE802.3af compliant) Power Supply S30VE Max. 8.1 W – Class 0 power sourcing equipment (requests 15.4 W) S800VE Max. 3.9 W – Class 2 power sourcing equipment (requests 7.0 W) Power Consumption S30VE Approx. 650 g (1.44 lb.) S800VE Approx. 630 g (1.39 lb.) Weight Impact Resistance Dust-resistant/Waterproof Specification IP66
-----------------------	--

Safety Precautions

Installation Precautions



Warning

Failure to follow the instructions may result in death or serious injury.

Do not install in the following places:

- Places in strong direct sunlight, near heat-generating objects, or subject to high temperatures
- Places near fire sources or flammable solvents (alcohol, thinner, fuel, etc.)
- Places subject to oily smoke or steam
- Places subject to sea air
- Confined or enclosed places

Failure to do so may result in fire or electric shock.

- Insulate the ends of cables you are not using.

Failure to insulate will cause fire or electric shock.

Notes on Power Supply

- Do not set any heavy objects on the LAN cable.
- Do not pull, forcibly bend, scratch, or modify the LAN cable.

Failure to do so may result in fire or electric shock.



Caution

Failure to follow the instructions may result in injury.

For installation or inspection of this camera, consult the dealer where you purchased the product.

- This installation should be made by a qualified service person and should conform to all local codes.
- When installing, make sure the surface is capable of withstanding the total weight of the camera and accessories, and sufficiently reinforce if necessary.
- Be sure to use installation screws designed for the type of surface the camera is to be installed.
- Periodically check the parts and screws for rust and loosening, in order to prevent injuries and equipment damage due to falling items.

- Do not install in unstable places, places subject to significant vibration or impact, or places subject to salt damage or corrosive gas.
- Do not install in places subject to strong winds.
- Do not install where snow can accumulate directly on the camera.

Be sure to attach the safety wire when installing the camera.
Failure to do so may result in the camera falling or other accidents.

- Do not touch the edges of metal parts with bare hands.
- Be careful not to get your fingers caught when installing.

Failure to do so may result in injuries.

Caution

Failure to follow the instructions may result in property damage.

- S30VE** Do not move the lens unit by hand.
- Do not install on an unstable surface.
- To maximize shock resistant specifications, do not install on insufficiently strong surfaces or surfaces subject to significant vibration.
- After turning off the power, do not turn the power on again for at least five seconds.
- Take measures to remove static electricity before performing any procedures.
- If there is condensation, please wait to power on, until the condensation dissipates.

- Please waterproof and dust-proof camera when installing outdoors.
- The network camera is only intended for a connection to an Ethernet or PoE network without routing to the outside plant.

Failure to do so may result in malfunctions.

- Take care not to damage wiring or piping.

Failure to do so may result in damage to peripheral items.

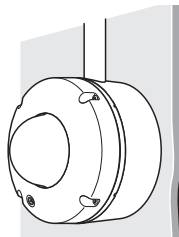


Important

We recommend the installation of a lightning arrester (a surge protection device) as a measure against failures caused by lightning strikes. Please refer to our website for details.

Precautions for Installing the Camera Outdoor

- The dome casing may cloud (due to time related deterioration of the dome material), if set up under direct sunlight.
- This camera complies with the Dust-resistant/Waterproof Specification (IP66) rating. However, long exposure to rain may result in the corrosion of the outer shell, due to acid and heavy metals in the rain water.
- Completely wrap the cable connections and the ends of cables you are not using, including the connectors, with waterproof tape up to the cable jacket, so as not to allow water to enter.
- When connecting the camera to the composite pipe (3/4-inch NPSM plumbing screw holes), bridge the gap using the conduit box (sold separately). When connecting the conduit box and the pipe, weatherproof the end of the pipe, if necessary, by wrapping it with sealing tape, clean it of any dirt, and then firmly secure it. Also, apply silicon sealant or a similar substance as necessary to seal the pipe tightly after attachment.



Precautions for Use



Warning

Failure to follow the instructions may result in death or serious injury.

- If you discover defective conditions such as smoke, strange sounds, heat or strange odors, immediately stop using the camera and contact your nearest dealer.
- Fire or electric shock may result from continued use of the product.

- If thunder starts, stop installation or inspection etc. and do not touch the camera or continue connecting the cable.
 - Do not disassemble or modify the camera.
 - Do not damage the connecting cable.
 - Do not insert foreign objects such as water or metal into the camera.
 - Do not use flammable sprays near the camera.
 - Do not leave LAN cables connected when the camera is not in use for long periods.
 - Do not use flammable solvents such as alcohol, paint thinner or benzene when cleaning the camera.
- Failure to do so may result in fire or electric shock.

The contents of this guide are subject to change without any prior notice.

CANON INC.

30-2, Shimomaruko 3-chome, Ohta-ku, Tokyo 146-8501, Japan

CANON EUROPA N.V.

Bovenkerkerweg 59, 1185 XB Amstelveen, The Netherlands