

**Canon**

# **EOS D60**

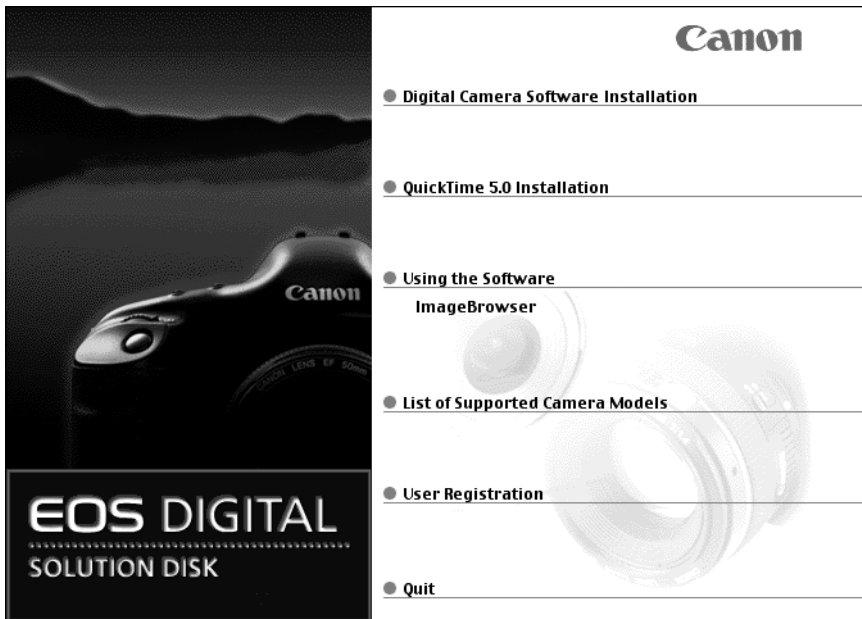
## **DIGITAL**

# **Software**

**Macintosh**

## **INSTRUCTIONS**

### **EOS DIGITAL SOLUTION DISK**



Please read these instructions carefully before using the EOS D60 software.  
This guide should be kept in a safe place so that it can be used for future reference.



**E**  
English Edition

# READ CAREFULLY BEFORE USING!

## CANON SOFTWARE LICENSE AGREEMENT

IMPORTANT - READ THIS AGREEMENT BEFORE USING THE SOFTWARE ON THE CD-ROM IN THIS BOX. BY USING THE SOFTWARE, YOU AGREE TO BE BOUND BY THE TERMS OF THIS AGREEMENT.

This is a license agreement (the [Agreement]) between you and Canon Inc. ([Canon]).

IF YOU DO NOT AGREE TO THE TERMS AND CONDITIONS OF THIS AGREEMENT, DO NOT USE THE SOFTWARE PROGRAM ON THE CD-ROM AND THE USER MANUAL IN THIS BOX (COLLECTIVELY, THE [SOFTWARE]) AND RETURN THE SOFTWARE WITHIN 30 DAYS FROM THE DATE OF PURCHASE TO YOUR POINT OF PURCHASE FOR A REFUND.

In consideration of the right to use the SOFTWARE, you agree to abide by the terms and conditions of this Agreement.

1. **LICENSE:** Canon grants you the non-exclusive right to use the SOFTWARE only on a single computer. You may physically transfer the SOFTWARE from one computer to another provided that the SOFTWARE is used on only one computer at a time. You shall not install or use the SOFTWARE on a network, multiple CPU, multiple site arrangement, or any other hardware configuration where the SOFTWARE is accessible to more than one CPU or to more than one user.

YOU SHALL NOT ASSIGN, SUBLICENSE, RENT, LEASE, LOAN, CONVEY OR OTHERWISE USE, TRANSFER, COPY, TRANSLATE, CONVERT TO ANOTHER PROGRAMMING LANGUAGE, ALTER, MODIFY, DECOMPILE OR DISASSEMBLE THE SOFTWARE, IN WHOLE OR IN PART, EXCEPT AS EXPRESSLY PROVIDED IN THIS AGREEMENT.

2. **BACK-UP COPY:** You may make one copy of the SOFTWARE solely for back-up purposes, or copy the SOFTWARE onto the permanent storage device (e.g. a hard disk) of your computer and retain the original for back-up purposes. Any other copying of the SOFTWARE is a violation of this Agreement. You must reproduce and include the copyright notice on the back-up copy.
3. **SUPPORT AND UPDATES:** Canon is not responsible for providing maintenance or support for use of the SOFTWARE. No updates, fixes or support will be made available for the SOFTWARE.
4. **LIMITED WARRANTY AND LIMITATION OF LIABILITY:** It is your responsibility to choose, maintain and match the hardware and software components of your computer system. Thus Canon does not guarantee uninterrupted service or correction of errors or that the functions or performance of the SOFTWARE will meet your requirements. THE SOFTWARE IS LICENSED ON AN [AS IS] BASIS AND WITHOUT WARRANTY OF ANY KIND. The CD-ROM storing the SOFTWARE is warranted only against defective material under normal use for a period of ninety (90) days after purchase from an authorized Canon dealer as evidenced by your sales receipt. Your sole remedy for a defective CD-ROM shall be replacement of the same without charge when returned by you at your expense to your point of purchase and proven to be defective upon inspection. The replacement CD-ROM will be warranted for the remainder of the original ninety (90) day warranty period of the defective CD-ROM. The limited warranty does not apply if the failure of the CD-ROM resulted from accident, abuse or misapplication of the SOFTWARE and shall not extend to anyone other than the original user of the SOFTWARE.

EXCEPT AS SPECIFICALLY SET FORTH IN THIS PARAGRAPH 4, CANON, CANON'S

SUBSIDIARIES, DISTRIBUTORS AND DEALERS DISCLAIM ALL WARRANTIES, EXPRESS OR IMPLIED, INCLUDING ANY WARRANTY OF MERCHANTABILITY OR FITNESS FOR A PARTICULAR PURPOSE, WITH RESPECT TO THE SOFTWARE.

NEITHER CANON NOR ANY OF CANON'S SUBSIDIARIES, DISTRIBUTORS OR DEALERS IS LIABLE FOR ANY DAMAGES HOWSOEVER CAUSED, INCLUDING WITHOUT LIMITATION, DIRECT, CONSEQUENTIAL OR INCIDENTAL LOSS OR DAMAGE INCLUDING LOSS OF PROFITS, EXPENSE OR INCONVENIENCE HOWSOEVER CAUSED OR ARISING OUT OF THE SOFTWARE OR THE USE THEREOF.

NEITHER CANON, NOR ANY OF CANON'S SUBSIDIARIES, DISTRIBUTORS OR DEALERS SHALL HAVE ANY OBLIGATION TO INDEMNIFY YOU AGAINST ANY CLAIM OR SUIT BROUGHT BY A THIRD PARTY ALLEGING THAT THE SOFTWARE OR THE USE THEREOF INFRINGES ANY INTELLECTUAL PROPERTY OF SUCH THIRD PARTY.

5. **TERM:** This Agreement is effective upon your using the SOFTWARE and remains in effect until expiration of all copyright interests in the SOFTWARE unless earlier terminated. You may terminate this Agreement by destroying the SOFTWARE. This Agreement will also terminate without notice to you if you fail to comply with any of the terms of this Agreement and you must then promptly return the SOFTWARE. In addition, Canon may enforce its other legal rights.
6. **U.S. GOVERNMENT RESTRICTED RIGHTS NOTICE:** The SOFTWARE is provided with restricted rights. Use, duplication or disclosure is subject to restrictions as set forth in either subparagraph (c) (1) (ii) of the Rights in Technical Data and Computer software clause at DFARs 252.227-7013 or subparagraph (c) (1) and (2) of the Commercial Computer Software Restricted Rights Clause at FAR 52.227-19, as applicable.
7. **SEVERABILITY:** In the event that any provision of this Agreement is declared or found to be illegal by any court or tribunal of competent jurisdiction, such provision shall be null and void with respect to the jurisdiction of that court or tribunal and all the remaining provisions of this Agreement shall remain in full force and effect.
8. **CONTROLLING LAW:** The terms of this Agreement as it relates to purchases of the Software in the United States of America shall be governed and construed in all respects in accordance with the laws and regulations of the State of New York, without reference to choice of law principles. The terms of this Agreement as it relates to purchases of the Software in Canada shall be governed by the laws of the province of Ontario.
9. **OWNERSHIP:** All rights, including but not limited to copyrights and trade secret rights, to the SOFTWARE belong to Canon, its affiliated corporations and third party licensors. Your use of the SOFTWARE is subject to the United States, Canada and other applicable copyright and trademark laws and nothing in this Agreement constitutes a waiver of the rights of Canon, its affiliated corporations and third party licensors under such laws. Nothing contained in Paragraph 1 shall be construed to give Canon any ownership rights in any images, graphics or textual material that you save in connection with the Software.
10. **ACKNOWLEDGEMENT:** BY USING THE SOFTWARE, YOU ACKNOWLEDGE THAT YOU HAVE READ THIS AGREEMENT, UNDERSTOOD IT, AND AGREE TO BE BOUND BY ITS TERMS AND CONDITIONS. YOU ALSO AGREE THAT THIS AGREEMENT IS THE COMPLETE AND EXCLUSIVE STATEMENT OF AGREEMENT BETWEEN YOU AND CANON CONCERNING THE SUBJECT MATTER HEREOF AND SUPERSEDES ALL PROPOSALS OR PRIOR AGREEMENTS, VERBAL OR WRITTEN, AND ANY OTHER COMMUNICATIONS BETWEEN THE PARTIES RELATING TO THE SUBJECT MATTER HEREOF. NO AMENDMENT TO THIS AGREEMENT SHALL BE EFFECTIVE UNLESS SIGNED BY A DULY AUTHORIZED OFFICER OF CANON.

# Contents

## READ CAREFULLY BEFORE USING! ..... I

### Safety Precautions ..... V

Disclaimer ..... V

Trademark Acknowledgments ..... V

About These Instructions and the

Symbols Used ..... V

About the ImageBrowser Software

Guide ..... VI

About QuickTime ..... VI

### About the Software ..... VII

EOS DIGITAL SOLUTION DISK ..... VII

Adobe Photoshop 5.0 LE DISK ..... VIII

### Computer System Requirements ..... IX

## 1 Installing the Software ..... 1-1

### Installing the Software ..... 1-2

EOS DIGITAL SOLUTION DISK

Installation ..... 1-2

Installing Photoshop 5.0 LE ..... 1-4

Please Register Your Camera! ..... 1-4

## 2 Getting Ready to Work with Images ..... 2-1

### Connecting the Camera to Your Computer ..... 2-2

### Inserting a CF Card into Your Card Reader ..... 2-4

## 3 Working with Images in the Plug-In Module ..... 3-1

### Starting the Plug-In Module ..... 3-2

### Displaying Images ..... 3-5

Displaying Images by Connecting the Camera to Your Computer ..... 3-5

Displaying Images by Connecting a Card Reader ..... 3-6

### Selecting the Image Display Format .... 3-8

### Selecting the Display Mode and

### Display Size ..... 3-9

Selecting the Display Mode ..... 3-9

Selecting the Display Size ..... 3-11

### Selecting Images ..... 3-12

Selecting Images with the Mouse ..... 3-12

Selecting Images from the Control Panel ..... 3-12

### Working with Selected Images ..... 3-13

Operations that Can Be Used with Images ..... 3-13

Attaching Checkmarks to Selected Images ..... 3-14

Protecting Images ..... 3-15

Selecting Images by Condition ..... 3-16

Checking the Image Information ..... 3-16

Erasing Images ..... 3-17

Rotating Images ..... 3-17

### Processing RAW Images ..... 3-18

Correcting the Brightness (Digital Exposure Compensation) ..... 3-19

Adjusting the White Balance ..... 3-20

Adjusting the Color in Images ..... 3-22

### Saving Images ..... 3-23

Saving Images from the Camera to Your Computer ..... 3-23

Extracting JPEG Images from RAW Images ..... 3-27

### Specifying the Preferences ..... 3-29

### Transferring Images to Photoshop 5.0 LE ..... 3-32

## **4 Downloading Images with the USB Mounter ..... 4-1**

<b>Using the USB Mounter .....</b>	<b>4-2</b>
Enabling the USB Mounter .....	4-2
Downloading Images .....	4-3

## **5 Working with Images in RAW Image Converter ..... 5-1**

<b>Using RAW Image Converter .....</b>	<b>5-2</b>
--	------------

## **6 Specifying Camera Settings from Your Computer ..... 6-1**

<b>Specifying the Camera Settings .....</b>	<b>6-2</b>
---	------------

## **7 Operating the Camera from Your Computer ..... 7-1**

<b>Starting RemoteCapture .....</b>	<b>7-2</b>
<b>Taking Shots from Your Computer .....</b>	<b>7-4</b>
Using RemoteCapture .....	7-4
Default Settings .....	7-5
Printing Images .....	7-7
Timer Shooting .....	7-7
Interval Timer Shooting .....	7-8

## **8 Working with Images in ImageBrowser ..... 8-1**

<b>Starting ImageBrowser .....</b>	<b>8-2</b>
Starting ImageBrowser from the [ImageBrowser Automation wizard] Dialog Box .....	8-2
Starting ImageBrowser Using the Icon ..	8-4
<b>The ImageBrowser Window .....</b>	<b>8-5</b>
<b>Downloading and Saving Images .....</b>	<b>8-7</b>
<b>Processing RAW Images with ImageBrowser .....</b>	<b>8-9</b>
<b>Merging Panoramic Images with PhotoStitch .....</b>	<b>8-10</b>
<b>Printing Images .....</b>	<b>8-11</b>

## **9 Troubleshooting and Uninstallation ..... 9-1**

<b>Troubleshooting .....</b>	<b>9-2</b>
<b>Uninstallation Procedure .....</b>	<b>9-3</b>
Uninstalling the Software .....	9-3
Uninstalling USB Mounter .....	9-4
Uninstalling Photoshop 5.0 LE .....	9-4
<b>Index .....</b>	<b>9-5</b>
<b>Adobe Customer Support .....</b>	<b>9-7</b>

# Safety Precautions

Please read the safety precautions carefully before using this product. Ensure that you use the product correctly according to the procedures described in these instructions.

The following safety precautions are intended to instruct you in the safe and correct operation of the product and its accessories to prevent injuries or damage to yourself, other persons and property. Please read and ensure that you understand them before you proceed to the other sections of these instructions.

## Warning

Do not play the supplied CD-ROM(s) in any CD-ROM Player that does not support data CD-ROMs. The extremely loud sound that may result from playing the CD-ROM(s) in an audio CD player (music player) could damage the speakers. It is also possible to suffer hearing losses from listening with headphones to the loud sounds of a data CD-ROM played on a music CD player.

## Disclaimer

- While every effort has been made to ensure that the information contained in these instructions is accurate and complete, no liability can be accepted for any errors or omissions. Canon reserves the right to change the specifications of the hardware and software described herein at any time without prior notice.
- No part of these instructions may be reproduced, transmitted, transcribed, stored in a retrieval system, or translated into any language in any form, by any means, without the prior written permission of Canon.
- Canon makes no warranties for damages resulting from corrupted or lost data due to a mistaken operation or malfunction of the camera, the software, the CompactFlash™ cards (CF cards), personal computers, peripheral devices, or use of non-Canon CF cards.

## Trademark Acknowledgments

- Canon and EOS are trademarks of Canon Inc.
- Adobe and Photoshop are trademarks of Adobe Systems Incorporated.
- CompactFlash is a trademark of SanDisk Corporation.
- iBook, iMac and QuickTime are trademarks of Apple Computer Inc.
- Macintosh, PowerBook, Power Macintosh and FireWire are trademarks of Apple Computer Inc., registered in the United States and other countries.
- Windows is a registered trademark or trademark of Microsoft Corporation in the United States and/or other countries.
- Other names and products not mentioned above may be registered trademarks or trademarks of their respective companies.

## About These Instructions and the Symbols Used

The information in these instructions is valid for the Mac OS 9 operating systems. Descriptions of EOS D60 operations assume that the reader is familiar with the information in the bundled EOS D60 Instructions. For detailed information on how to use the software products and the restrictions that apply to those products, refer also to the Help and Readme files for the respective products.



: Marks information that should be read before use to prevent damage to the camera, camera malfunction, or problems that would interfere with the functioning of software and computer.



: Marks additional information that you will find helpful when using the camera or software.

## About the ImageBrowser Software Guide

A PDF-format Software Guide that provides detailed instructions for using ImageBrowser is included on the EOS DIGITAL SOLUTION DISK. You will need Adobe Acrobat Reader to view the Software Guide. If you have not already installed Adobe Acrobat Reader on your computer, install it using the procedure below.

### Installing Acrobat Reader

- 1 Load the EOS DIGITAL SOLUTION DISK into the CD-ROM drive.
- 2 Double-click the following in sequence: the SOLUTION DISK icon ► the [Readme] folder ► the [English] folder ► the [Acrobat] folder ► [Reader Installer].
- 3 Proceed with the installation as directed by the on-screen messages.

### Viewing the ImageBrowser Software Guide

- 1 Load the EOS DIGITAL SOLUTION DISK into the CD-ROM drive.
- 2 Double-click the SOLUTION DISK icon ► the [Canon Digital Camera Installer] icon.  
→ The Installer panel appears.
- 3 Click [Using the software].
- 4 Click [ImageBrowser].  
→ Acrobat Reader starts up and the [ImageBrowser Software Guide] appears.

## About QuickTime

To save composite images made using PhotoStitch in the QuickTime VR format, you will need QuickTime 3.0 or later. If you have not already installed QuickTime 3.0 or later on your computer, install it using the procedure below.

- 1 Load the EOS DIGITAL SOLUTION DISK into the CD-ROM drive.
- 2 Double-click the SOLUTION DISK icon ► the [Canon Digital Camera Installer] icon.  
→ The Installer panel appears.
- 3 Click [QuickTime 5.0 Installation].
- 4 Proceed with the installation as directed by the on-screen messages.

# About the Software

This section briefly describes the main functions of the software provided on the bundled CD-ROM.

## ■ EOS DIGITAL SOLUTION DISK

### Plug-In Module

- Enables you to display, save and erase images.
- Allows you to process RAW images and then perform image processing.

### USB Mounter

- This utility allows you to treat the camera like a computer drive or read-only card reader, displaying the CF card contents on the computer and permitting files to be downloaded as if they were being copied from a card reader.

### ImageBrowser

- You can automatically start this program and use it to display the images stored on the EOS D60 simply by connecting the camera to your computer's USB port. To download images from the EOS D60 to your computer, select the thumbnails (a list of reduced images) on the computer screen.
- This program displays downloaded images in lists and allow you to sort and organize them by content.
- This program can display images in order according to the shooting date.
- You can use ImageBrowser to change the size and compression rate of an image and then save the modified image.

### RAW Image Converter

- This program processes RAW images that you shot on the EOS D60 and saved onto your computer. You can also use this program to save your images in popular formats such as TIFF (8 or 16 bits/channel) and JPEG.

### PhotoStitch

- PhotoStitch provides an easy way to merge a series of overlapping images into a single, seamless panorama by automatically arranging the frames in order. You can use this feature to stitch your shots together into one complete 360° cylinder-shaped panorama image.

### RemoteCapture

- RemoteCapture allows you to operate the EOS D60 remotely and download images to your computer. RemoteCapture also lets you take pictures using a timer shooting or interval timer shooting function, in addition to single-frame shooting.



# ■ Adobe Photoshop 5.0 LE DISK

## Photoshop 5.0 LE

- This is a full-featured image retouching program equipped with a complete range of image processing functions. You can also use Photoshop 5.0 LE to start the Plug-In Module.
- You can use the Plug-In Module to display images saved on your computer and to image-process your saved images.
  - \* If you already have Photoshop 5.0 LE installed on your computer, you do not need to install it again.
  - \* Explanations for the Plug-In Module-compatible application in these instructions all use examples from Photoshop 5.0 LE.

# Computer System Requirements

<b>Computer</b>	Macintosh computer equipped with a USB port as a standard feature (users of first-generation iMacs require a firmware update. →9-2)	
<b>OS</b>	Mac OS 8.6 to 9.2 (Mac OS 9.0 or later recommended)	
<b>CPU</b>	Power PC	
<b>RAM</b>	Minimum 64 MB of application memory required, 128 MB or more recommended	
<b>Interface</b>	USB	
<b>Hard disk space</b>	Plug-In Module	15 MB or more
	USB Mounter	5 MB or more
	ImageBrowser	20 MB or more
	PhotoStitch	30 MB or more
	RAW Image Converter	15 MB or more
	RemoteCapture	15 MB or more
	Adobe Photoshop 5.0 LE	40 MB or more
<b>Display</b>	800 × 600 dots, 256 colors or more required	
	1024 × 768 dots, 32,000 colors or more recommended	

- A CD-ROM drive is required for software installation.
- USB Mounter is compatible with Mac OS 9.0 or later.



# Installing the Software

---

This chapter describes the procedure for installing the software for EOS D60 and Photoshop 5.0 LE.

# Installing the Software

- You must follow the procedure given below to install the software.

1. EOS DIGITAL SOLUTION DISK
2. Photoshop 5.0 LE

- ⚠ Do not connect the camera to your computer before you have installed the software as this will prevent successful software installation.

## EOS DIGITAL SOLUTION DISK Installation

### 1 Start up your computer.

- Close any programs that are running before you begin installing the software.

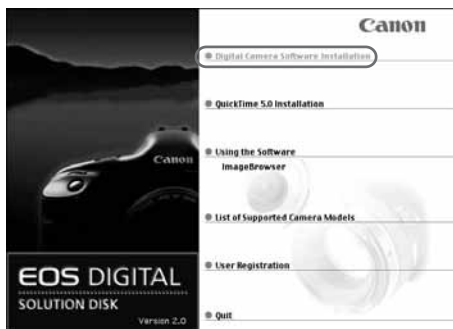
### 2 Load the SOLUTION DISK into the CD-ROM drive.

- ➔ The SOLUTION DISK icon appears on the desktop.

### 3 Start the installer.

- Double-click the SOLUTION DISK icon ► the [Canon Digital Camera Installer] icon to start.
- ➔ The Installer panel appears.

### 4 Click [Digital Camera Software Installation].



## 5 Select the software to be installed.

- Click the checkboxes for the software to be installed and then click the [Install] button.



## 6 Read all of the Software User License Agreement carefully. If you agree to the terms of the license, click the [Agree] button.

## 7 Select the folder in which the software will be installed and then click the [Choose] button.

## 8 Proceed with the installation as directed by the on-screen messages.

→ When installation ends, a restart dialog box appears.

## 9 Click the [Yes] button and restart your computer.

## 10 Copy the Plug-In Module to the software you will use.

- Copy the [Canon Camera Plug-In 4] file in the [Camera Plug-In] folder located inside the [Canon Utilities] folder to the plug-ins folder for the software you are using. Then restart your computer.
- For the bundled Photoshop 5.0 LE application, after you have installed Photoshop 5.0 LE, copy the [Canon Camera Plug-In 4] file to the [Import/Export] folder located inside the [Plug-Ins] folder in the [Adobe Photoshop 5.0 LE] folder. Then restart your computer.

## Installing Photoshop 5.0 LE

- You are required to enter the serial number during Photoshop 5.0 LE installation. The serial number is as follows:

**SDM501B4164785-650**

### 1 Load the Adobe Photoshop 5.0 LE CD-ROM into the CD-ROM drive.

- ➔ The CD-ROM folder automatically opens.
- If the folder does not open automatically, double-click the CD-ROM icon on the desktop.

### 2 Double-click the [English] folder and then the [Adobe Photoshop 5.0 LE] folder to open.

### 3 Double-click the [Install Photoshop LE] to start.

### 4 Proceed with the installation as directed by the on-screen messages.

- For more information on the installation procedure, refer to the [Read Me] file inside the [English] folder on the Photoshop 5.0 LE CD-ROM.



Specify at least 40 MB as the memory allocated to Photoshop 5.0 LE. For more information on how to allocate memory to an application, refer to the User's Manual for your computer.

## Please Register Your Camera!

We recommend you take a moment to register your camera, in order to receive further product information.

To proceed to the online User Registration page, simply click the [User Registration] button from the [EOS DIGITAL SOLUTION DISK].

If there is no response when you click the [User Registration] button, start your Internet browser program (such as Microsoft Internet Explorer or Netscape Communicator), then go to the [Html] folder on the SOLUTION DISK and open the [regist.html] file inside the [English] folder.



# Getting Ready to Work with Images

---

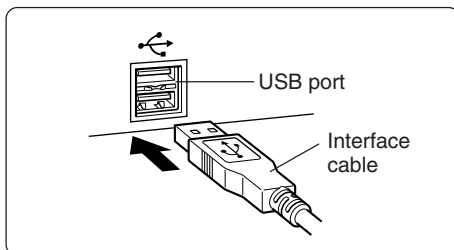
This chapter explains how to connect the camera to your computer and how to use a card reader (third-party product).

# Connecting the Camera to Your Computer

Connect the EOS D60 to your computer with the interface cable so that they can communicate. You can connect the camera while your computer is running. The ImageBrowser starts up automatically when you connect the camera. Note that you have the option of disabling ImageBrowser auto start.

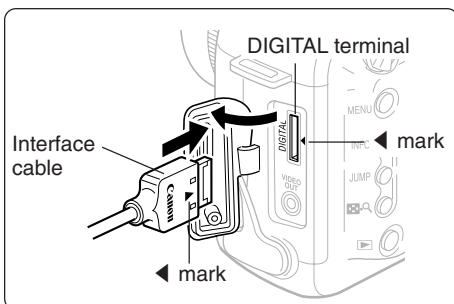
## 1 Plug the interface cable into the computer.

- Plug the cable into the USB port on the computer.
- The location of the port differs depending on your computer. Refer to the User's Manual for your computer for details.



## 2 Plug the interface cable into your camera.

- Open the cover and plug in the interface cable so that the ◀ mark on the plug is aligned with the ◀ beside the DIGITAL terminal.



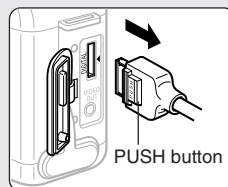
## 3 Set the camera's main switch to <ON>.

- ➔ ImageBrowser starts up.
- See Chapter 8 "Working with Images in ImageBrowser" for more information on ImageBrowser.





- Use only the interface cable bundled with the camera to connect the camera to your computer.
  - Push the plug firmly all the way into the socket. Loose connections can cause faults or malfunctions.
  - Connect the camera directly to a USB port on the computer; not through a hub. The connection may not operate correctly through a hub.
  - The connection may not operate correctly if you are using other USB devices, excluding USB mouse or keyboards, at the same time. If this occurs, disconnect the other devices from the computer and try reconnecting the camera.
  - Do not connect more than one camera to the same computer. The connections may not operate correctly.
  - While the camera and your computer are communicating, the camera's LCD panel may blink and, if you are using the LCD monitor, the image on the monitor may flicker. This is not malfunction.
  - When you unplug the interface cable from the camera's DIGITAL terminal, press the PUSH button on the plug as you pull the plug out.
  - If you leave the camera unused for approximately 5 minutes while it is connected to your computer, a confirmation message appears on the computer screen asking whether you wish to continue communicating with the camera. If you do not do anything, the connection to the camera is terminated after approximately 1 minute. (If you are using a household power source, no message is displayed and the connection is not terminated.) To re-establish the connection, press the shutter button down halfway or set the camera's main switch to <OFF> and then back to <ON>.
- Refer to the EOS D60 Instructions provided with the camera for details.
- To set up the software so that ImageBrowser does not start up when you connect the camera to your computer, see "Disabling ImageBrowser Auto Start" (→8-4).
  - Do not put your computer to sleep while it is connected to the camera.
- If you do put your computer to sleep while it is connected to the camera, never disconnect the interface cable while your computer is still in sleep mode. Always wake your computer up before disconnecting the camera. On some types of computer, disconnecting the interface cable while your computer is in sleep mode could prevent the computer from waking up correctly. Refer to the computer User's Manual for more information on Sleep mode.



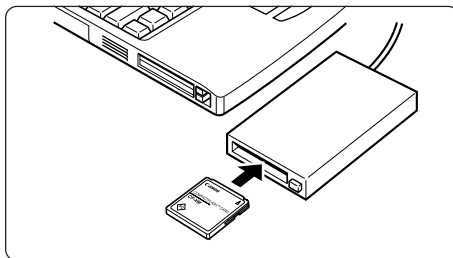
When you connect your camera to a computer, you should use the DC Coupler Kit so that you can continue to use your camera regardless of battery level.

# Inserting a CF Card into Your Card Reader

To download images from a CF card directly onto your computer, remove the CF card from your camera and load it into a card reader (third-party product) connected to your computer.

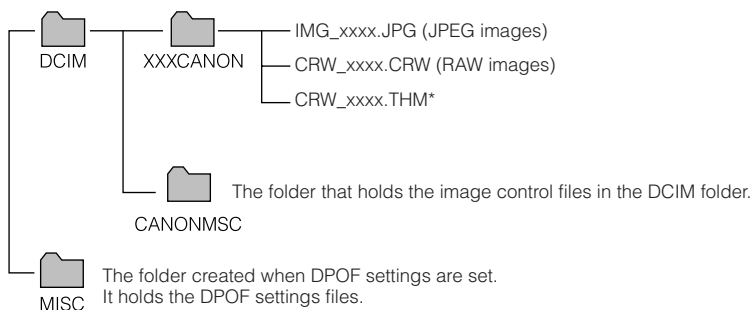
**1 Remove the CF card from the camera.**

**2 Load the card into the card reader.**



## CF Card Folder Structure and File Names

The images on a CF card are placed in sub-folders named [XXXXCANON], where the “XXX” represents a number from 100 to 998, within the [DCIM] folder.



- The “xxxx” in file names represent four-digit numbers.
- All folders except the “XXXXCANON” folders contain image control files. Do not open or delete them.

\* Files with the THM extension are the thumbnail image files for the camera’s index replay mode.



For information on connecting the card reader to your computer, refer to the User’s Manual provided with the card reader.



## **Working with Images in the Plug-In Module**

---

This chapter explains how to use the Plug-In Module to display and save images stored on a CF card loaded in the camera and describes how to process and image-process RAW images.

# Starting the Plug-In Module

The Plug-In Module software starts from a Plug-In Module-compatible application (such as Adobe Photoshop 5.0 LE). The descriptions given here use the bundled Photoshop 5.0 LE software as an example.

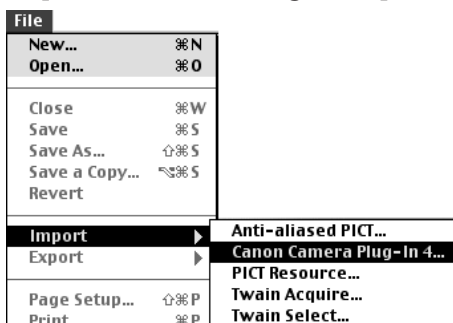
If you are using Plug-In Module-compatible application other than Photoshop 5.0 LE, refer to the User's Manuals provided with your software for information on setting up and using TWAIN devices.

## 1 Start Photoshop 5.0 LE.

- Open the [Adobe Photoshop 5.0 LE] folder in the location specified during installation and double-click the [Adobe Photoshop 5.0 LE] icon inside the folder to start the application.
  - When you connect the camera to your computer, the [ImageBrowser Automation wizard] dialog box appears. Click the [Cancel] button and then close ImageBrowser.
  - To set up the software so that ImageBrowser does not start up when you connect the camera to your computer, see "Disabling ImageBrowser Auto Start" (→8-4).
- ➔ Photoshop 5.0 LE starts up.

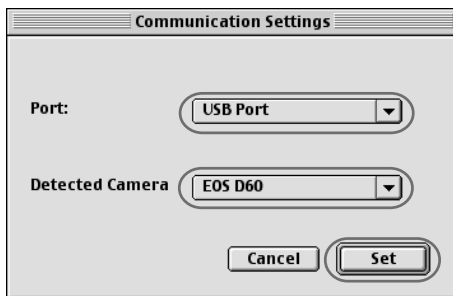
## 2 Select [File] menu ► [Import] ► [Canon Camera Plug-In 4...].

- ➔ The Plug-In Module starts up.
- ➔ The [Communication Settings] dialog box appears.
- If the [Communication Settings] dialog box does not appear, click the [Communication Setup] button.

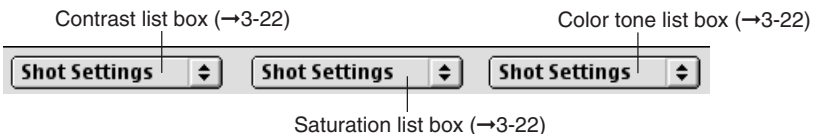
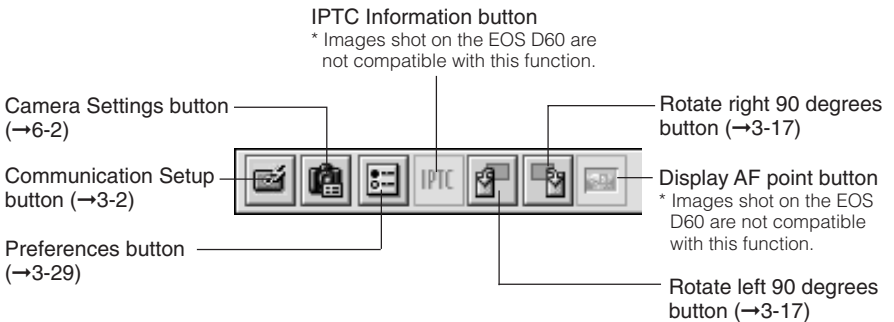
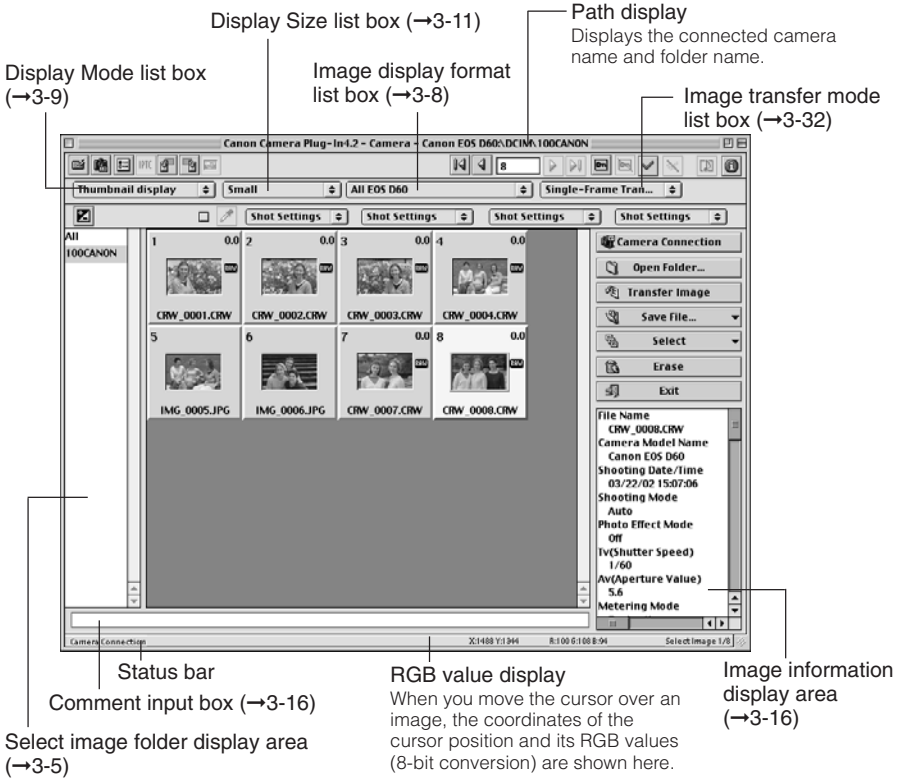


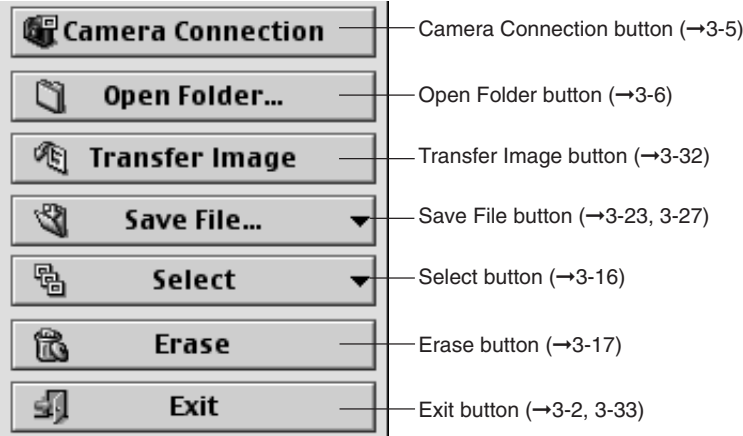
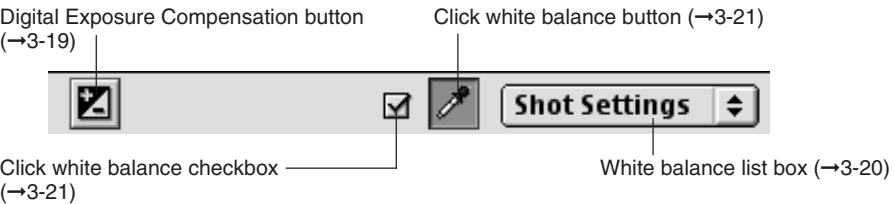
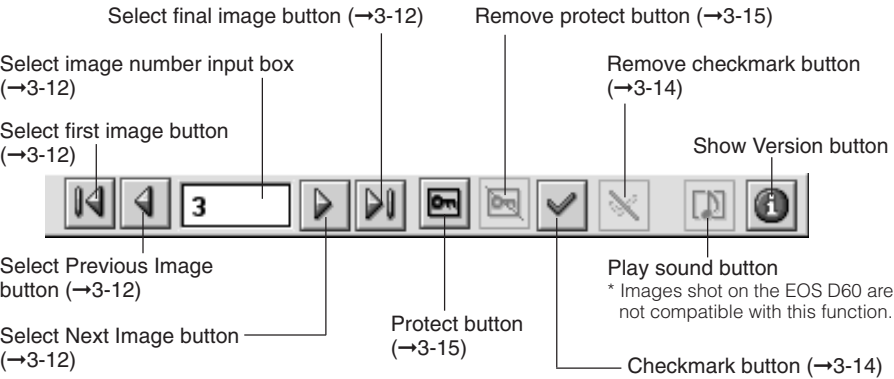
## 3 Confirm that [USB Port] is selected in the [Port] list box and that [EOS D60] is selected in the [Detected Camera] list box, then click the [Set] button.


- ➔ The main window opens. In the main window, you can display and process the images saved on the CF card in the camera.
- To close the Plug-In Module, click the [Exit] button in the main window.



## Plug-In Module main window





 When you install just the Plug-In Module without installing ImageBrowser, the “Could not locate ImageBrowser” message appears when you connect the camera to your computer. If this happens, click the [OK] button and then see “Disabling ImageBrowser Auto Start” (→8-4) and disable ImageBrowser auto start.

# Displaying Images

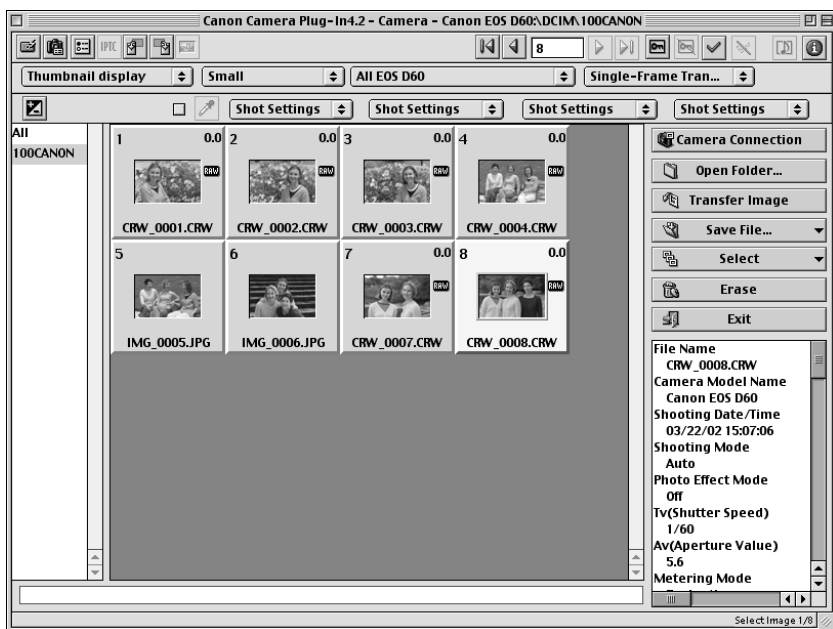
This section describes how to display images stored on a CF card.

You can display images via the interface cable while the CF card is still in the camera, or by loading the CF card into a third party card reader.

## Displaying Images by Connecting the Camera to Your Computer

### 1 Click the [Camera Connection] button.

- ➔ After a short delay, the images appear.
- The highest numbered image in the highest numbered folder is automatically selected and displayed.



### 2 Select a folder that contains images.

- When you click a folder name in the select image folder display area, the images in that folder are displayed. Click [All] to display all the images on the CF card.



- Because RAW images are processed before being displayed, there is a short delay before the images appear.
- You can specify which image is selected first when the [Camera Connection] button is clicked. (→3-29)

## Displaying Images by Connecting a Card Reader

Remove the CF card from the camera and load it into the card reader. (→2-4)

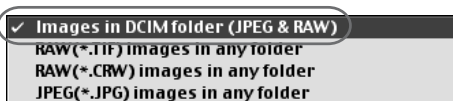
### 1 Click the [Open Folder...] button.

- The [Select Image Folder] dialog box appears.



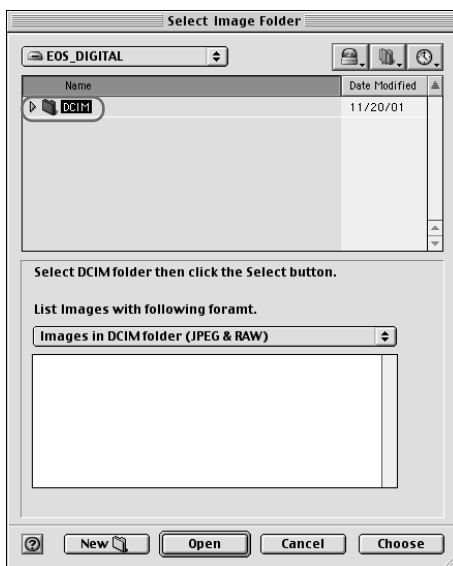
### 2 Select the image format.

- Select [Images in DCIM folder (JPEG & RAW)].



### 3 Select a folder.

- Open the drive for the CF card containing images shot on the EOS D60 and select the [DCIM (or Dcim)] folder.



### 4 Click the [Choose] button.

- The images shot on the EOS D60 in the selected folder are displayed.



## Image Display Formats

### [Images in DCIM folder (JPEG&RAW)]

Use this option to display the JPEG and RAW images saved in the DCIM folder.

In step 3, you can also select any folder in the DCIM folder and display only the images saved in that folder.

If you display images in this format, do not rename any of the folders on the CF card.

Renaming folders such as the DCIM folder or 100CANON folder may make it impossible to display the images in those folders.

### [RAW (\*.TIF) images in any folder]

Use this option to display only the TIFF-format RAW images (EOS-1D etc.) saved in the selected folder. Select this format in step 2, then select a folder containing TIFF-format RAW images.

### [RAW (\*.CRW) images in any folder]

Use this option to display only the CRW-format RAW images (EOS D60 and D30 etc.) saved in the selected folder. Select this format in step 2, then select a folder containing CRW-format RAW images.

### [JPEG (\*.JPG) images in any folder]

Use this option to display only the JPEG images saved in the selected folder. Select this format in step 2, then select a folder containing JPEG images.

Depending on the type of device that originally created the image, you may not be able to display some JPEG images.



To save the images on a CF card to your computer or to another media, you must select and then save the displayed images (→3-23) or copy the DCIM folder to your computer or to the target media.



- Because RAW images are processed before being displayed, there is a short delay before the images appear.
- To display the images saved on your computer's hard disk, use the procedure described in "Displaying Images by Connecting a Card Reader" (→3-6).

# Selecting the Image Display Format

The format options for image display are [All], [JPEG], [EOS D60 RAW] and [All EOS D60]. Specifying one of these options allows you to display only images in the selected format.

---

**Click the [Image display format] list box and select the image display format.**

➔ Only images in the selected display format are displayed.



## **[All]**

All the images saved in the selected folder are displayed.

## **[JPEG]**

Only JPEG images are displayed.

## **[EOS D60 RAW]**

Only EOS D60 RAW images are displayed.

## **[All EOS D60]**

Only images shot on the EOS D60 in the RAW+JPEG images are displayed.



You may be unable to correctly display images that were shot on cameras other than the EOS D60 or that were modified or renamed on a computer after being captured.



If the selected folder or the CF card in the connected camera contains any images (including RAW or JPEG images) that were shot on a Canon camera other than an EOS D60, the image display format for those images is displayed in the list box.

# Selecting the Display Mode and Display Size

The available display modes are [Thumbnail display], [Preview] and [JPEG Preview]. You can select [Large], [Middle], or [Small] as the display size for each display mode.

## Selecting the Display Mode

Click the [Display Mode] list box and select the mode.

- The images are displayed in the selected display mode.



### [Thumbnail display]

This shows multiple images arranged in sequence. The information shown below is also displayed for the images.



Transferred image mark  
(→3-33)

This mark is attached to images that have been transferred to the Plug-In Module-compatible application.

Display number

Numbers are assigned sequentially to the displayed images starting with the first image.

Digital exposure compensation (→3-19)

Recording format

The [RAW] symbol is displayed for RAW images. No symbol is shown for JPEG images.

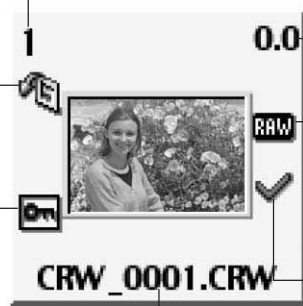
Checkmark (→3-14)

Protect mark (→3-15)

This mark is attached to protected images.

File name or shooting date/time

The item selected in [Image Lower Display Item] list box in the [Preferences] dialog box (→3-29) is displayed.



When you start the Plug-In Module, images are always shown in the [Thumbnail display] mode.

The selected image is displayed as a single frame.



JPEG image is displayed.  
The table below shows the types of JPEG images displayed for the different image recording formats.

--	--



When a RAW image is shot on the EOS D60, a JPEG (Middle/Fine) image is recorded at the same time. When you select [JPEG Preview] for an EOS D60 RAW image, the JPEG (Middle/Fine) image included in the RAW image is displayed.

## Selecting the Display Size

**Click the [Display Size] list box and select the display size.**

- ➔ The image is displayed in the selected display size.



In the [Preview] mode, the available image sizes are [Large] (100%), [Middle] (50%) and [Small] (25%).

# Selecting Images

## Selecting Images with the Mouse

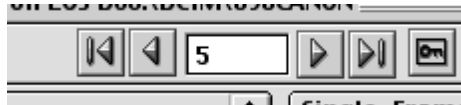
Position the mouse cursor over the image and click the mouse button.

- To select multiple images at random, hold down the <shift> key and select the images.
  - To select consecutive images, select the first image and then hold down the <option> + <shift> keys and select the last image.
- ➔ The frame around the selected image changes color.



## Selecting Images from the Control Panel

You can also select images in the image selection control panel.



- : **[Select first image] button**  
Selects the first thumbnail image displayed.



- : **[Select Previous Image] button**  
Selects the image before the currently selected image.



- : **[Select image number] input box**  
Selects the image with the specified number. You can enter a number between 1 and 9999. Enter the number and press the <return> key.



- : **[Select Next Image] button**  
Selects the next image.



- : **[Select final image] button**  
Selects the last thumbnail image displayed.



- If you position the mouse cursor over an image and double-click, the image is transferred to Photoshop 5.0 LE (Plug-In Module-compatible application).
- To select an image using the keyboard, use the arrow keys (↑ ← → ↓) to move to the image and then press the spacebar.

# Working with Selected Images

## Operations that Can Be Used with Images

The table below lists the operations available with the Plug-In Module. When a JPEG image is selected, the unavailable operations are shown grayed out.

Image recording formats and image processing options

Operations	RAW	JPEG	Description
Checkmark	✓	✓	Used for selecting specific images.
Protect	✓	✓	Protects the image so it cannot be erased.
Erase	✓	✓	Erases unprotected images.
Comment input*	✓	✓	Attaches a brief comment to each frame.
Transfer image	✓	✓	Transfers images to applications such as Photoshop 5.0 LE.
Save file	✓	✓	Saves an image to your computer, etc.
Rotate image*	✓	✓	Rotates the image by 90 degree unit.
Digital exposure compensation	✓	—	Adjusts the brightness.
White balance	✓	—	Adjusts the white balance.
Click white balance	✓	—	Automatically adjusts the white balance.
Contrast	✓	—	Adjusts the contrast.
Color saturation	✓	—	Adjusts the color density.
Color tone	✓	—	Adjusts the color tone.

- Operations marked with an asterisk (\*) cannot be used with images saved on a CF card in the camera and are shown grayed out in the control panel. Save such images to your computer or use the operation via a card reader.

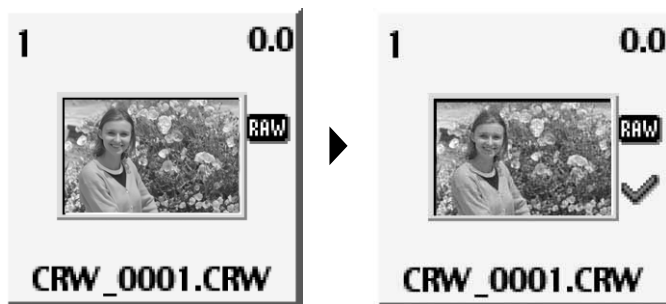


The sharpness for RAW images can be specified in the [Preferences] dialog box (→3-29).

## Attaching Checkmarks to Selected Images

You can use this function to attach checkmarks to your images for quick and easy image selection. Note that attaching a checkmark to an image does not protect the image.

Click the [Checkmark] button.



→ When you attach a checkmark to an image, the [✓] appears.

- Clicking the [Remove checkmark] button removes the [✓] and cancels the checkmark setting.



The checkmark is removed when you quit the Plug-In Module.



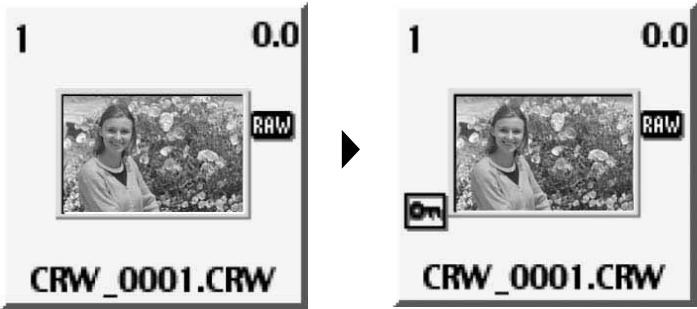
A range of operations is also available by selecting the image, pressing the <control> key + mouse button and selecting an option from the menu that appears.



# Protecting Images

You can protect important images to prevent them from being accidentally erased.

Click the [Protect] button.



→ The image is protected, and the [On] is displayed.

- Clicking the [Remove protect] button clears the [On] and removes the protection.



- When multiple images are selected, all the selected images are protected.
- The [On] is automatically displayed for images that were protected on the camera.
- Protection only prevents images from being erased. Other types of image processing can still be specified for protected images.
- A range of operations is also available by selecting the image, pressing the <control> key + mouse button and selecting an option from the menu that appears.

# Selecting Images by Condition

This feature allows you to select multiple images for which a condition has been set (e.g. checkmarked or protected images) in a single operation. You can also select all the displayed images.

**Click the [Select] button and select the condition from the menu that appears.**

➔ Only images that meet the condition are selected.

Select All	⌘A
Select All Images with Checkmarks	⌘T
Select All Images without Checkmarks	⌘U
Select all protected images.	⌘L
Select all unprotected images.	⌘Y

# Checking the Image Information

Shooting information is recorded when images are taken. You can check the shooting information by selecting the image. Also, you can copy shooting information to paste it into another application, and you can add a comment.

**Image information display area**

- Displays information such as the file name, camera model name and shooting data. The number of items displayed differs depending on the camera settings.
- Use the scroll buttons to display parts of the information that are not visible.
- When you select multiple images, the information from the image selected last is displayed.
- You can copy the information as text data and paste it into another application.



**Comment input box**

You can use this box to type in a comment up to 120 characters long. Type in your comment and press the <return> key.

## Erasing Images

Use the procedure below to erase unwanted images from a CF card or your computer.

- 1 Click the [Erase] button.**  
→ An erase confirmation dialog box appears.



- 2 Click the [Erase] button.**  
→ The image is erased.



- Erased images cannot be restored. Check carefully before erasing images.
- Protect important images to prevent them from being accidentally erased.
- If you click the [Erase] button when multiple images are selected, all the selected images are erased. Take particular care when you have just finished a task involving the selection of multiple images.



A range of operations is also available by selecting the image, pressing the <control> key + mouse button and selecting an option from the menu that appears.

## Rotating Images

Use the procedure below to rotate a selected image by 90 degree unit left or right.

### Rotate the image.

- To rotate the image right (clockwise), click the [Rotate right 90 degrees] button.
- To rotate the image left (counterclockwise), click the [Rotate left 90 degrees] button.
- The image rotates 90 degrees in the selected direction.



- When multiple images are selected, all the selected images are rotated.
- A range of operations is also available by selecting the image, pressing the <control> key + mouse button and selecting an option from the menu that appears.

# Processing RAW Images

RAW images are processed so that they are optimized for their intended purpose. In addition to the digital exposure compensation and white balance settings, the Plug-In Module allows you to specify the click white balance, contrast, color density and color tone.

This image processing does not involve working with the original RAW images. It applies virtual parameters to RAW images temporarily downloaded to the computer.

Accordingly, you can redo the processing repeatedly with different parameters.

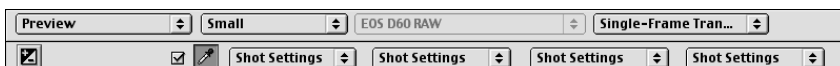
You can also change the modified parameters back to the settings used when the shot was taken.

## 1 Process the RAW image.

- Set the image display format to [EOS D60 RAW]. (→3-8)
- Select the RAW image to be processed. (→3-12)
- It is recommended that you use the [Preview] mode to check the processed image. (→3-10)

## 2 Change the parameter settings.

- Change parameter settings. See the pages that follow for information on how to set the parameters.
  - The image is reprocessed using the modified parameters and the result is shown.
- Because the parameters set during shooting and the modified parameters for the original RAW image are updated in realtime.



## 3 Save or transfer the image in a commonly used format.

- You can save an image as a JPEG or TIFF format by clicking the [Save File...] button and selecting [Convert and save in file...] from the menu that appears (→3-23). By selecting [JPEG Extraction...], you can extract and save a JPEG image (Middle/Fine) from an image recorded in the RAW format (→3-27).
- Clicking the [Transfer Image] button transfers the image to Photoshop 5.0 LE. (→3-32) You can specify the number of colors when the image is transferred in the [RAW Image Processing Settings] tab sheet in the [Preferences] dialog box (→3-30).



- When multiple images are selected, the specified processing is applied to all the RAW images selected.
- The sharpness for RAW images can be specified in the [Preferences] dialog box (→3-29).

## Correcting the Brightness (Digital Exposure Compensation)

You can correct the brightness of an image through the equivalent of  $\pm 2$  stops in 0.1-stop increments.

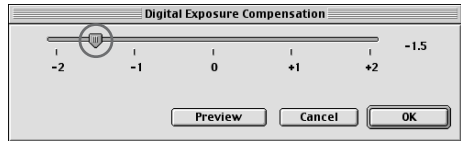
### 1 Click the [Digital Exposure Compensation] button.

- The [Digital Exposure Compensation] dialog box appears.



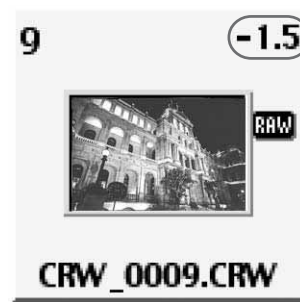
### 2 Correct the image brightness.

- Adjust the image brightness by using the mouse to drag the slider left or right.
- When you click the [Preview] button, the image brightness changes according to the value of the new slider position.



### 3 Click the [OK] button.

- The corrected value is applied to the image and the [Digital Exposure Compensation] dialog box closes.
- The corrected value is displayed with the corrected image.



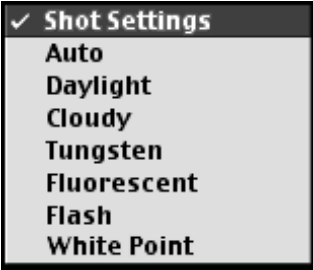
# Adjusting the White Balance

You can adjust the white balance in your RAW images.  
You can select the white balance from the 8 available settings. You can also make finer adjustments to the white balance using the Click White Balance function, which allows you to adjust the balance by selecting a white area in the image.

## Select the White Balance

Select the white balance from the [White balance] list box.

- The table below shows the 8 available white balance settings.
- [White Point] is displayed only when you select an image that has been adjusted using the Click White Balance function.



White Balance	Details	Color temp./K (Kelvin)
Shot Settings	Select this option to apply the white balance setting used when the shot was taken.	—
Auto	The Plug-In Module automatically adjusts the white balance	Approx. 3000-7000
Daylight	Select this setting for shots taken outdoors in sunny weather.	Approx. 5200
Cloudy	Select this setting for shots taken outdoors in cloudy weather or in shade, at dusk and for shots of sunsets.	Approx. 6000
Tungsten	Select this setting for shots taken in incandescent white lighting.	Approx. 3200
Fluorescent	Select this setting for shots taken in fluorescent white lighting.	Approx. 4000
Flash	Select this setting for shots taken using a flash.	Approx. 6000
White Point	Displayed when you use Click White Balance. (→3-21)	Approx. 2000-10000

➡ The adjusted image appears.

## Click White Balance Function

This function allows you to automatically adjust the white balance simply by clicking a point in a white part of the image.

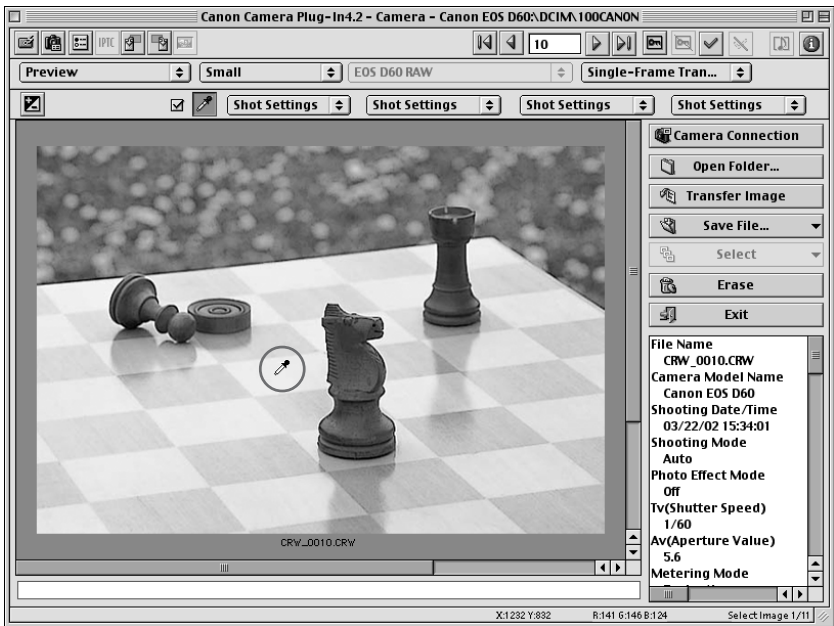
### 1 Click the [Click white balance] checkbox.

- The [Click white balance] button is now enabled.



### 2 Select a white area.

- When you move the cursor over the image, it changes to the shape of a filler.
- Click in a white area in the image.



- The white balance is adjusted so that the area clicked appears white and the result is displayed.
- To adjust the white balance using a different location, click the [Click white balance] button again.
  - To end the Click White Balance procedure, click the checkbox again to clear the box and end the procedure.

## Adjusting the Color in Images

Use the procedures below to adjust the color parameters (contrast, color density and color tone) in images. You can adjust the color by selecting settings from the respective list boxes.

### Adjusting the Contrast

---

**Select the desired contrast from the [Contrast] list box.**

➔ The resulting image is displayed.



### Adjusting the Color Density

---

**Select the desired color density from the [Saturation] list box.**

➔ The resulting image is displayed.



### Adjusting the Color Tone

---

**Select the desired color tone from the [Color tone] list box.**

➔ The resulting image is displayed.

- [Color tone 1] adjusts the colors so that the red tones are stronger.  
[Standard] applies the standard color matching adjustment.
- [Color tone 2] adjusts the colors so that the yellow tones are stronger.





# Saving Images

This section explains how to use the interface cable to save images stored on a CF card in your camera onto your computer. This section also describes a simple method for creating JPEG images from RAW images.

## Saving Images from the Camera to Your Computer

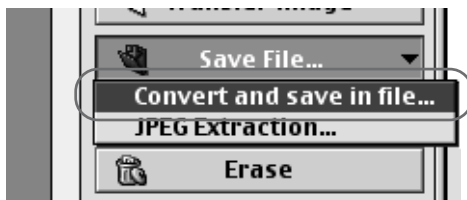
You should save the images you have shot on your computer.

### 1 Select the images.

- To save the images to separate folders, click the folder name in the select image folder display area and then select the images to be saved.
- To gather images in different folders together and save them in the same folder, click [All] in the select image folder display area and then select the images to be saved.
- Only the images with colored frames are saved.
- See “Selecting Images” (→3-12) for information on how to select images.

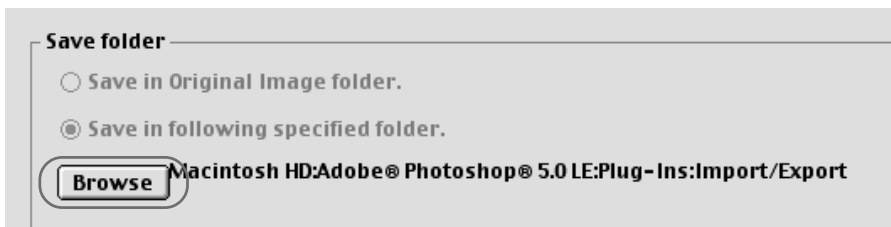
### 2 Click the [Save File...] button and select [Convert and save in file...].

- The [Save File] dialog box appears.

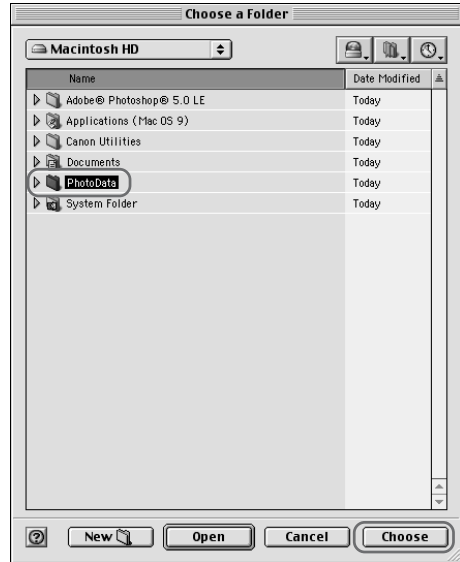


### 3 Select a folder.

- Click the [Browse] button.
- The [Choose a Folder] dialog box appears.



- Select the folder that the images will be saved in and click the [Choose] button.
- ➔ Clicking the [New] button opens the [New Folder] dialog box.
- You can create a new folder inside the selected folder by entering the folder name and clicking the [Create] button.



## 4 Set the save options and click the [OK] button.

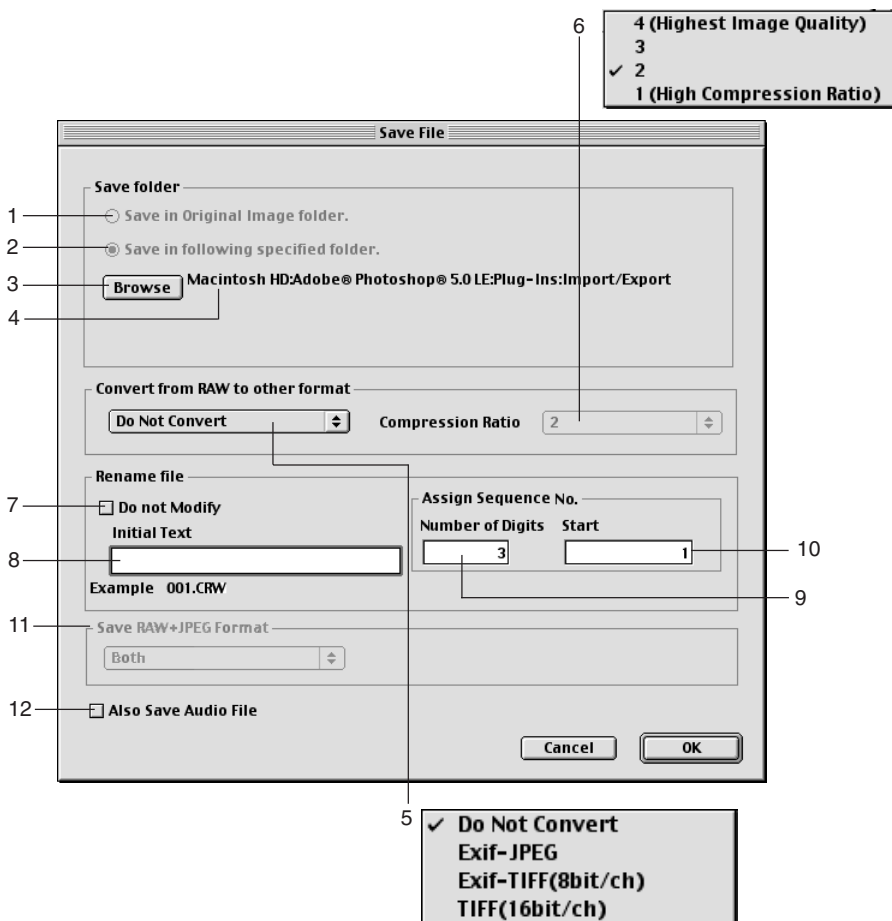
- ➔ The images are saved in the selected folder.



A range of operations is also available by selecting the image, pressing the <control> key + mouse button and selecting an option from the menu that appears.

## Save File dialog box


### 3



- 1 The converted image is saved in the same folder as the displayed image. You cannot select this option for images that are saved on a CF card in the camera. This option is only available for images saved on your computer or on a CF card in a card reader.
- 2 Use this button when you want to specify the folder in which the image will be saved.
- 3 When the [Save in following specified folder.] radio button is selected, this button specifies the folder in which the image will be saved.
- 4 Shows the folder in which the image will be saved.

- 5 Select this option when the images to be saved include RAW images. Select [Do Not Convert], [Exif-JPEG], [Exif-TIFF(8bit/ch)] or [TIFF(16bit/ch)]. The file extensions used for the saved files are shown below.

Conversion Format	File Extension
Do Not Convert	_.CRW
Exif-JPEG	_.RJ.JPG
Exif-TIFF(8bit/ch)	_.RT8.TIF
TIFF(16bit/ch)	_.RT16.TIF

-  ● The Plug-In Module cannot display images converted to TIFF format (Exif-TIFF(8bit/ch) or TIFF(16bit/ch)) and saved.
- To use linear processing, specify linear processing in the [Preferences] dialog box (→3-29) and select [TIFF(16bit/ch)] when you save the image. Even when linear processing is specified, linear processing cannot be applied to images saved in [Exif-TIFF(8bit/ch)] format.
- 6 You can specify the [Compression Ratio] (image quality) when you select [Exif-JPEG] from the [Convert from RAW to other format] list box. You can select from 4 compression ratios-[4 (Highest Image Quality)] to [1 (High Compression Ratio)]. The higher the value, the higher the quality of the JPEG image.
- 7 This checkbox is enabled when you select [Do Not Convert] in the [Convert from RAW to other format] list box. Click this checkbox when you want to save the RAW image without changing the name.
- 8 This is text inserted before the file number for sorting. You can enter up to 12 characters. When you enter text, an example of the file name appears in the [Example] field below the text box.
- 9 You can specify up to 9 digits in the file number.
- 10 Specifies the first file number.
- 11 This function is not compatible with images shot on the EOS D60.
- 12 This function is not compatible with images shot on the EOS D60.

## Extracting JPEG Images from RAW Images

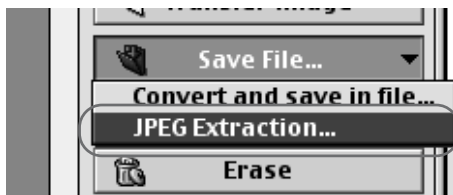
When a RAW image is shot on the EOS D60, a JPEG (Middle/Fine) image is recorded at the same time. You can save the JPEG (Middle/Fine) image included with an EOS D60 RAW image to your computer by extracting the JPEG image from the RAW image.

### 1 Select the RAW image from which a JPEG image is to be extracted.

- Set the image display format to [EOS D60 RAW] (→3-8) and select the RAW image from which you want to extract a JPEG image. (→3-12)

### 2 Click the [Save File...] button and select [JPEG Extraction...] from the menu that appears.

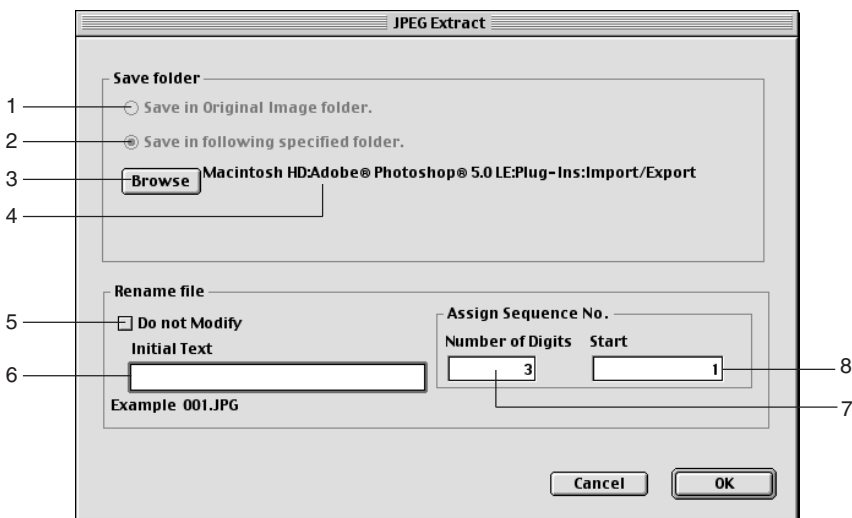
- ➔ The [JPEG Extract] dialog box appears.



### 3 Specify the desired settings and click the [OK] button.

- ➔ The JPEG image is saved in the selected folder.

## JPEG Extract dialog box



- 1 The converted image is saved in the same folder as the displayed image. You cannot select this option for images that are saved on a CF card in the camera. This option is only available for images saved on your computer or on a CF card in a card reader.
- 2 Use this button when you want to specify the folder in which the image will be saved.
- 3 When the [Save in following specified folder.] radio button is selected, this button specifies the folder in which the image will be saved.
- 4 Shows the folder in which the image will be saved.
- 5 Click this checkbox when you want to save the RAW image without changing the name.
- 6 This is text inserted before the file number for sorting. You can enter up to 12 characters. When you enter text, an example of the file name appears in the [Example] field below the text box.
- 7 You can specify up to 9 digits in the file number.
- 8 Specifies the first file number.

# Specifying the Preferences

You can use the procedure below to specify the general settings for the Plug-In Module and the processing method for RAW images.

## 1 Click the [Preferences] button.

→ The [Preferences] dialog box appears.



## 2 Select the [General Settings] tab or the [RAW Image Processing Settings] tab.

→ The selected tab sheet appears.

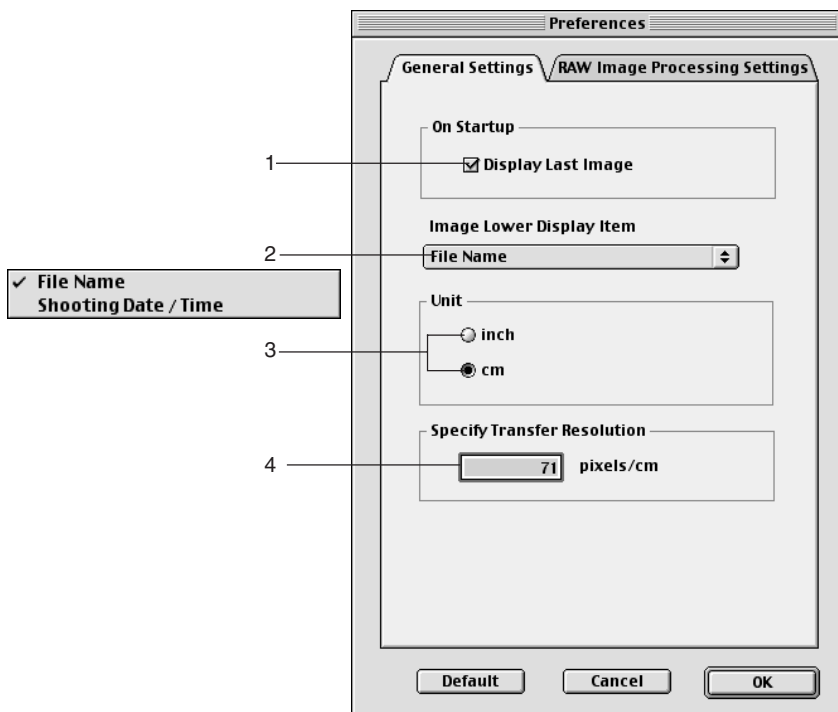
## 3 Specify the desired settings.

● Select the desired option in each setting.

## 4 Click the [OK] button.

→ The settings are applied and the [Preferences] dialog box closes to end the procedure.

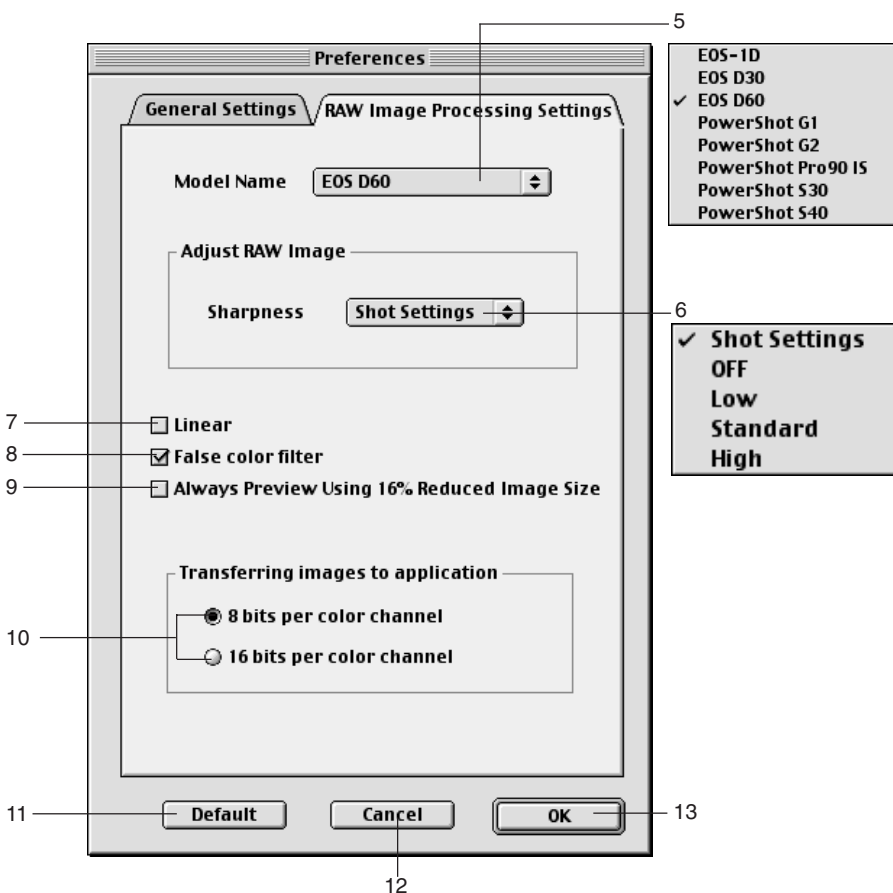
### General Settings tab sheet



● You can specify the settings shown below in the [General Settings] tab sheet.

- 1 When you click the [Camera Connection] button, the highest numbered image in the highest numbered folder in the DCIM folder is displayed.  
When this checkbox is not checked, the lowest numbered image in the lowest numbered folder is displayed.
- 2 Select [File Name] or [Shooting Date/Time] as the information displayed below images.
- 3 Select [inch] or [cm] as the units used in the Plug-In Module.
- 4 Sets the resolution used when images are transferred to a Plug-In Module-compatible application such as Photoshop 5.0 LE. You can specify values between 50 and 2400 pixels for [inch] and between 20 and 944 pixels for [cm].

## RAW Image Processing Settings tab sheet





● **You can specify the settings shown below in the [RAW Image Processing Settings] tab sheet.**

The settings described here are those shown when [EOS D60] is selected in the [Model Name] list box.

- 5 Select [EOS D60].
- 6 Set the sharpness setting to [Shot Settings], [OFF], [Low], [Standard] or [High].
- 7 When you click this checkbox, linear tone curve adjustment is performed on the image. This option minimizes the image degradation that occurs during the tone curve adjustment made when the image is transferred to an application such as Photoshop 5.0 LE, since the adjustment is linear. Select this option when you want to make fine color adjustments independently. Also, when you transfer or save an image for which linear processing has been specified, select [16 bits per color channel] in [Transferring images to application] and select [TIFF(16bit/ch)] in the [Convert from RAW to other format] list box (→3-25, 3-26) in the [Save File] dialog box.
- 8 Clicking this checkbox neutralizes false colors.
- 9 When you click this checkbox, a 16% reduced image is shown in the [Preview] mode.
- 10 Select [8 bits per color channel] or [16 bits per color channel] as the transfer bit rate to the Plug-In Module-compatible application. Note that when [16 bits per color channel] is selected, images are only transferred as 16-bit images if the software supports 16-bit images.

● **The buttons listed below are displayed in each of the tab sheets. They function in the same way in each sheet.**

- 11 Restores the default settings for all the parameters in the currently displayed tab sheet.
- 12 Discards all the settings, restores the parameters to their original values and ends the procedure.
- 13 Applies the specified parameters, closes the [Preferences] dialog box and ends the procedure.



When [EOS-1D], [EOS D30], [PowerShot G1], [PowerShot G2], [PowerShot Pro90 IS], [PowerShot S30] or [PowerShot S40] is selected in the [Model Name] list box, the available settings for the respective camera model are displayed.

# Transferring Images to Photoshop 5.0 LE

Use the procedure below to transfer images displayed by the Plug-In Module to Photoshop 5.0 LE (Plug-In Module-compatible application).

## 1 Select the transfer mode from the [Image transfer mode] list box.

- There are 2 available transfer modes.

[Single-Frame Transfer]:

The selected images are transferred as an individual image.

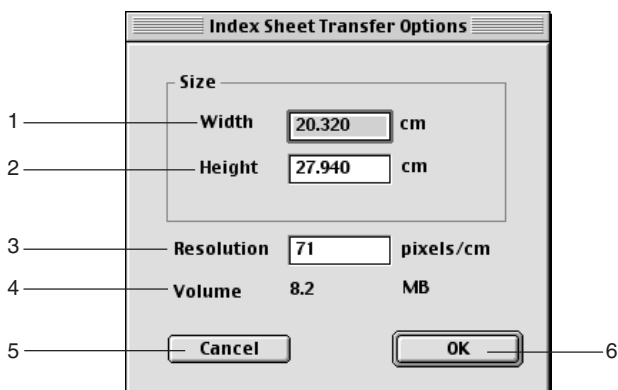
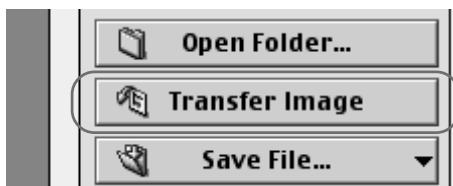
[Transfer as Index Image]:

Thumbnails are created for the selected images and transferred as an index sheet.

✓ **Single-Frame Transfer**  
**Transfer as Index Image**

## 2 Click the [Transfer Image] button.

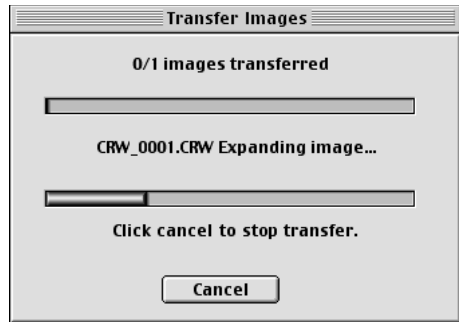
- If you selected [Transfer as Index Image] in the [Image transfer mode] list box, the [Index Sheet Transfer Options] dialog box appears.



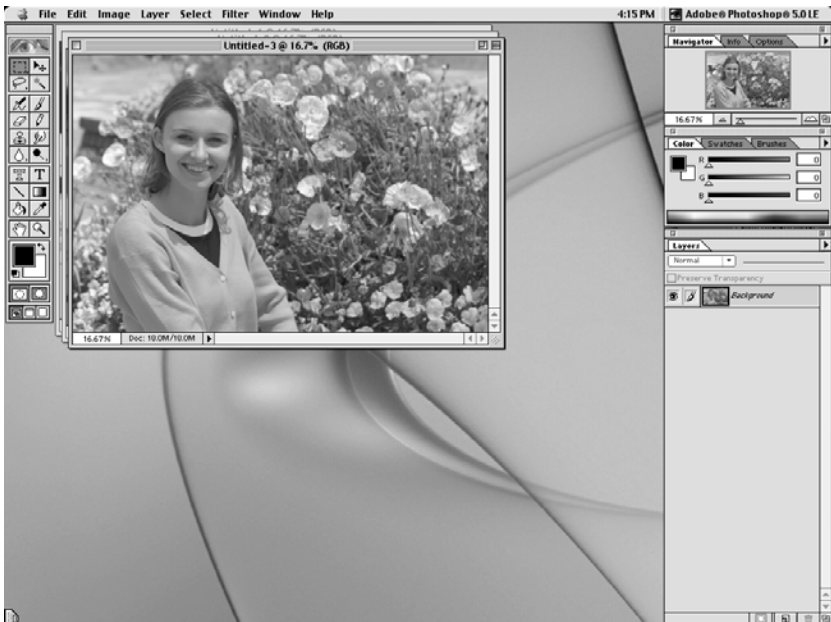
- Enter the width of the index sheet to be created.
- Enter the height of the index sheet to be created.
- Enter the resolution of the index images.
- Indicates the projected image file size based on the specified width, height and resolution.
- Cancels the index sheet transfer options settings.
- Applies the specified settings, closes the [Index Sheet Transfer Options] dialog box and starts index sheet transfer.

### 3 Enter the settings and click the [OK] button.

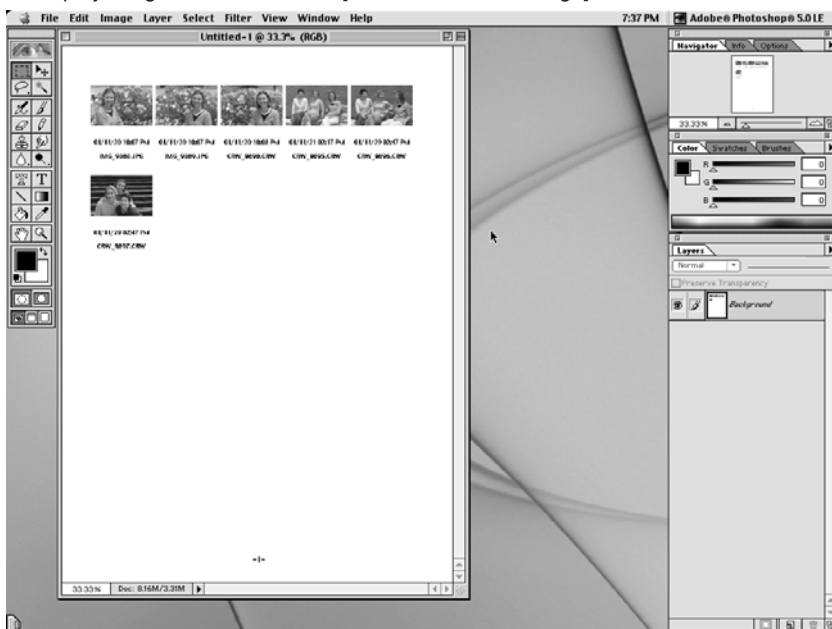
- ➔ The [Transfer Images] dialog box appears and the progress of transferring is displayed.
- You can stop image transferring by pressing the [Cancel] button.



- ➔ The transferred image is displayed in Photoshop 5.0 LE.
- ➔ The [Image Icon] is displayed for transferred images. (→3-9)
- Click the [Exit] button in the main window to exit the Plug-In Module.
- Display an image transferred with [Single-Frame Transfer].



- Display images transferred with [Transfer as Index Image].



- When you select RAW images and transfer the images as index images, the RAW image processing settings specified in the Plug-In Module are not reflected in the transferred images.
- When you want to transfer a single frame, you can also transfer the image by simply positioning the mouse cursor over the image and double-clicking.
- A range of operations is also available by selecting the image, pressing the <control> key + mouse button and selecting an option from the menu that appears.
- You can modify the transfer resolution setting in the [General Settings] tab sheet in the [Preferences] dialog box. (→3-29)

# 4

## Downloading Images with the USB Mounter

---

This chapter describes the settings needed to enable the USB Mounter and explains how to download and process RAW images with the USB Mounter.

# Using the USB Mounter

The USB Mounter is a driver that allows images on a CF card in a camera to be displayed on the computer screen as if the camera were a drive or a connected card reader. Images can be downloaded to the computer with the same procedures used to save images from a card reader.

## Enabling the USB Mounter

To download images with the USB Mounter, first enable it with the following procedures.

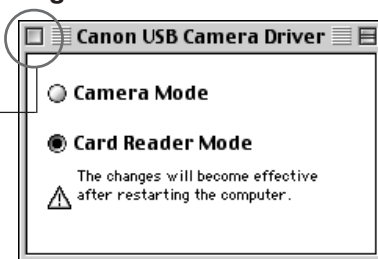
### 1 Select the Apple menu ► [Control Panels] ► [Canon USB Camera Driver].

→ The [Canon USB Camera Driver] dialog box appears.

### 2 Select the [Card Reader Mode] radio button and then close the [Canon USB Camera Driver] dialog box.

→ A dialog box prompting you to restart the computer appears.


Click here to close it.



### 3 Click the [Yes] button to restart the computer.

→ The USB Mounter will be enabled.

## How to Disable the USB Mounter

Disable the USB Mounter when you need to upload images to the camera or shoot with RemoteCapture. Select the Apple menu  ► [Control Panels] ► [Canon USB Camera Driver] and then select the [Camera mode] radio button. After you restart the computer, the USB Mounter will be disabled.



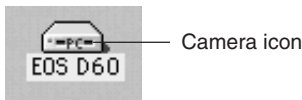
- You cannot use USB Mounter when the LCD monitor is switched on. Likewise, you cannot operate the camera while you are using USB Mounter.
- To enable the USB Mounter, the camera must be handled as if it were a drive like a card reader. Consequently, the following cannot be performed while the USB Mounter is running.
  - ImageBrowser cannot be automatically started when you connect the camera to your computer.
  - You cannot open a connection to ImageBrowser or the Plug-In Module and adjust camera settings.
  - You cannot shoot with RemoteCapture.In addition, images cannot be deleted from the camera and the computer images cannot be uploaded to the camera.

## Downloading Images

### 1 Connect the camera to your computer.

- For more information on connecting the camera to your computer, see “Connecting the Camera to Your Computer” (→2-2).
- ➔ The camera icon appears on the desktop.

### 2 Double-click the camera icon.



### 3 Select the folder containing the images.

- ➔ The images on the CF card appear as file icons.
- See “CF Card Folder Structure and File Names” (→2-4) for more information on the CF card folder structure.

### 4 Download images to the computer's hard disk using standard file saving procedures.

- Select images and drag and drop them onto the target folder on the computer to download them.



Never turn off the power or detach the interface cable while downloading. The equipment may not operate correctly.

## **How to Download Images from ImageBrowser and the Plug-In Module while the USB Mounter is Enabled**

When the USB Mounter is enabled, use the card reader downloading procedures in ImageBrowser or the Plug-In Module to download from the camera.

To download images using ImageBrowser, start up ImageBrowser by double-clicking its icon (→8-4) and then see “Downloading and Saving Images” (→8-7).

To download images using the Plug-In Module, start up the Plug-In Module (→3-2) and then see “Displaying Images by Connecting a Card Reader” (→3-6) and “Saving Images” (→3-23).

## **How to Process RAW Images while the USB Mounter is Enabled**

To convert RAW images when you are using the USB Mounter, start up RAW Image Converter, download the RAW images on the camera and then click the [Convert and save by current settings...] button and process the images. See “Using RAW Image Converter” (→5-2) for more information on how to use RAW Image Converter.



# 5

## **Working with Images in RAW Image Converter**

---

This chapter describes how to use RAW Image Converter to display images that you have saved onto your computer or onto a CF card inserted into a third-party card reader, and how to process and image-process those RAW images.

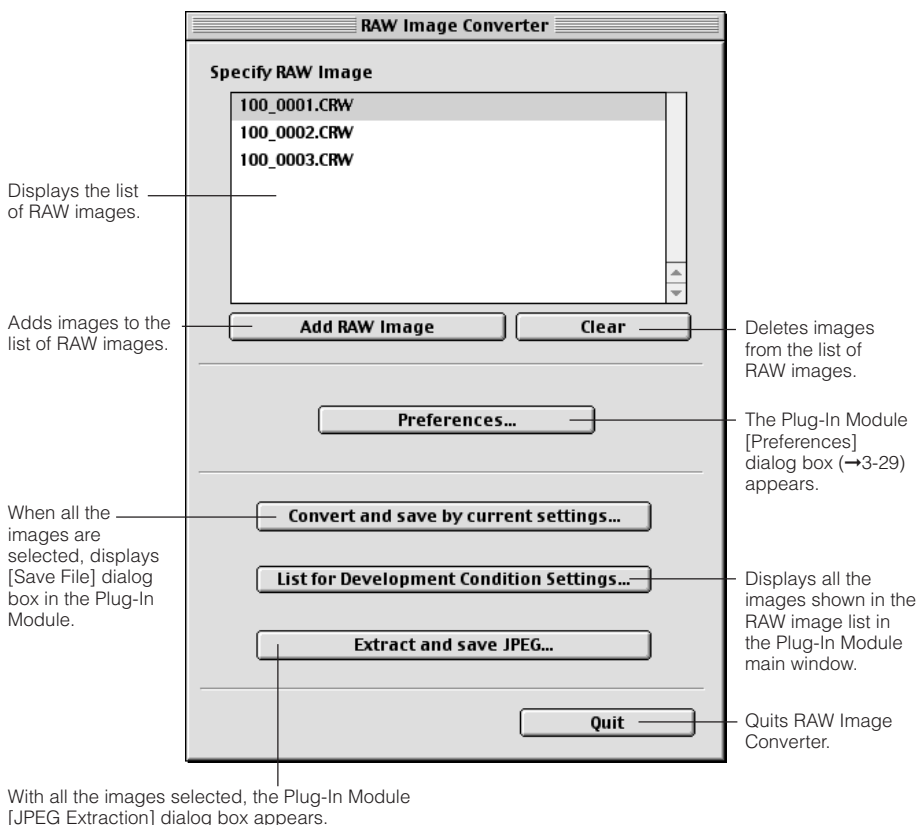
# Using RAW Image Converter

When you use the USB Mounter or copy images directly from a card reader, you can use RAW Image Converter to display and process images in the same way as the Plug-In Module. You can also save the processed images in JPEG or TIFF (8 or 16 bits/channel) format.

## 1 Start RAW Image Converter.

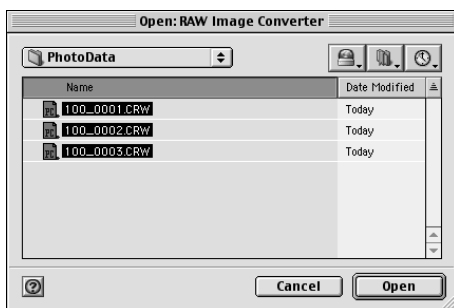
- [Canon Utilities] folder ► [RAW Image Converter] folder ► double-click [RAW Image Converter] to start.
- ➔ The [RAW Image Converter] main window appears.

### RAW Image Converter main window

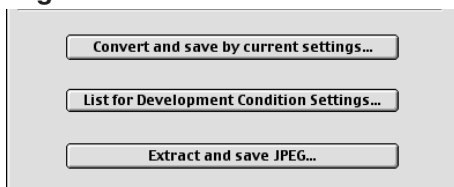


## 2 Download the images.

- Click the [Add RAW Image] button, select an image from the [Open: RAW Image Converter] dialog box, click the [Open] button and add the RAW image to the image list.
- ➔ The RAW images are added to the image list.

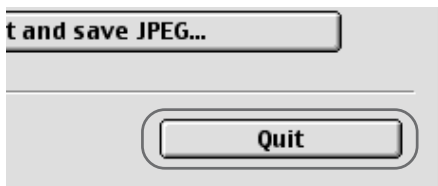


## 3 Image-process and save the images.



- When you click the [Convert and save by current settings...] button and all the RAW images displayed in the image list are selected, the Plug-In Module's [Save File] dialog box (→3-25) appears. Use this dialog box to process and save the images.
- When you click the [List for Development Condition Settings...] button, all the RAW images shown in the image list are displayed as thumbnails in the Plug-In Module's main window (→3-3). Use this window to process and image-process the images.
- When you click the [Extract and save JPEG...] button, the Plug-In Module's [JPEG Extraction] dialog box (→3-28) appears. Use this dialog box to save just the JPEG images contained in the selected folder.

## 4 Click the [Quit] button.



- For more information on using the windows and dialog boxes that appear, see Chapter 3, "Working with Images in the Plug-In Module".
- When you display the Plug-In Module's main window from RAW Image Converter, the [Camera Settings] button, [Camera Connection] button, [Transfer Image] button, [Erase] button and [Image transfer mode] list box are not shown. To perform tasks such as downloading images from the camera, start the Plug-In Module from Photoshop 5.0 LE.
- When you click the [List for Development Condition Settings...] button and the [Save File] dialog box appears, the [Do Not Convert] option in the [Convert from RAW to other format] list box is not available.

# 6

## **Specifying Camera Settings from Your Computer**

---

6

This chapter provides information on camera settings such as the owner name, date and time.

# Specifying the Camera Settings

Use the procedure described here to apply the owner name and date/time settings to the camera. The owner name, and date and time that were applied on the camera are recorded with the images.

You can also format (initialize) CF cards and check the camera properties data and the status of the battery and the CF card.

## Display the [Camera Settings] dialog box.

- To display this dialog box from the Plug-In Module, click the [Camera Settings] button in the main window.



- To display this dialog box from ImageBrowser, select [Canon Camera] menu ► [Settings] ► [Camera Settings...] in the Camera window.



- To display this dialog box from RemoteCapture, select [Camera Setting...] from the [File] menu.



➔ The [Camera Settings] dialog box appears.

## Camera Settings dialog box

This box shows the Camera's model name, Body ID and Firmware Version.

Camera Settings

Camera Model:Canon EOS D60

Body ID:000000001

Firmware Version:1.0.0.0

Owner's Name

canon

Date & Time

from Mac

12/17/01

5:34:54 PM

Battery StatusAC

CF Card :

Format

Status:Installed

Free:67.94MB

Total:121.85MB

Apply

Cancel

OK

These fields set the camera owner and the date and time. You can enter up to 31 characters in [Owner's Name].

This box shows whether a CF card is loaded in the camera along with the available space on the card and its total capacity. You can also format a CF card from this box.

Applies the settings.

Applies the specified settings, closes the [Camera Settings] dialog box and ends the procedure.

[OK] indicates that there is ample remaining charge in the battery and [LOW] indicates that the battery charge is low. [AC] is displayed when you are running the camera from a household power supply.

Discards all the settings, restores the parameters to their original values and ends the procedure.



Formatting (initializing) a CF card erases all the data on the card. Because formatting also erases protected images, you should check the data recorded on the card carefully before proceeding.

## Setting the Owner's Name, Date and Time

---

### 1 Enter the Owner's Name.

- Type in the name from your keyboard. You can enter up to 31 characters.

### 2 Set the Date and Time.

- You can use the [↑] and [↓] buttons to set the Date and Time, or you can select a field and enter the desired date or time from the keyboard. Clicking the [from Mac] button imports the Date and Time data from your computer.

### 3 Click the [OK] button.

- ➔ The owner's name, date and time settings are applied to the camera.
- Once you click the [Apply] button, the settings remain effective until you reset the owner's name, date or time.
- Clicking the [OK] button applies the specified settings, closes the [Camera Settings] dialog box and ends the procedure.



# 7

## Operating the Camera from Your Computer

7

This chapter describes EOS D60 operations using the RemoteCapture software, such as remote shooting, timer shooting and interval timer shooting.

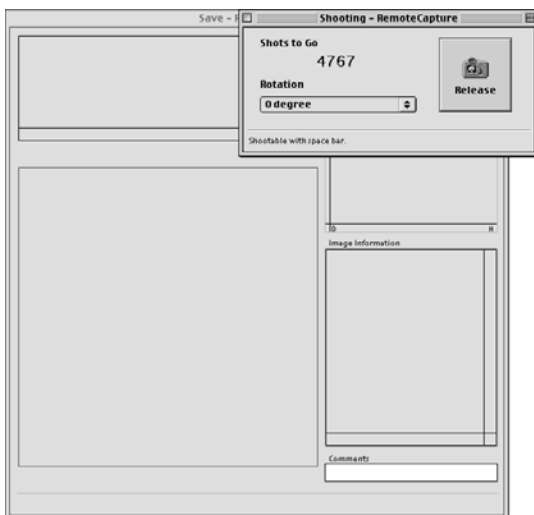
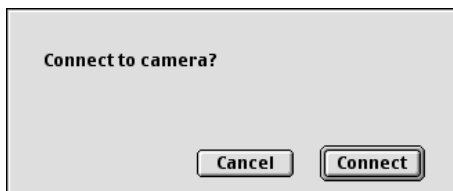
# Starting RemoteCapture

- 1 Double-click the [Canon Utilities] folder ► the [RemoteCapture] folder ► [RemoteCapture] to start.

→ A message appears prompting you to connect the camera to your computer.

- 2 Click the [Connect] button.

→ The Save window and Shooting window appear.



- To quit RemoteCapture, click the [Disconnect] button and select [Exit] from the [File] menu.

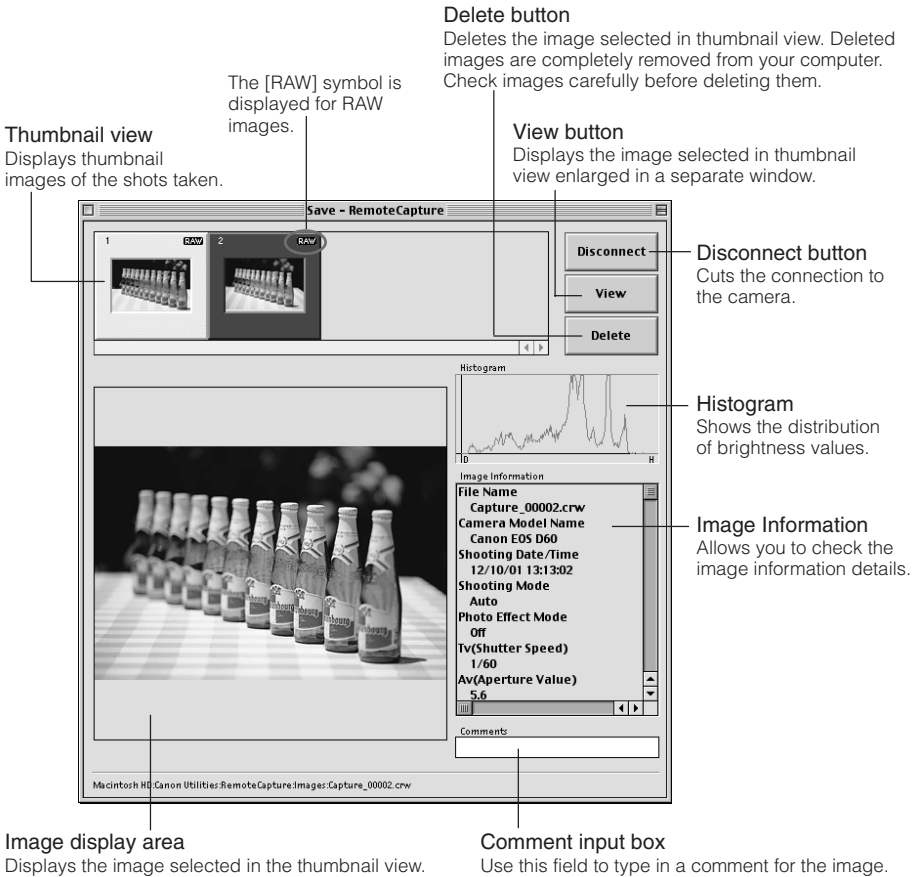


When you are using mirror lockup to take pictures, there is a delay of approximately 2 seconds after you click the RemoteCapture [Release] button before the picture is actually taken.

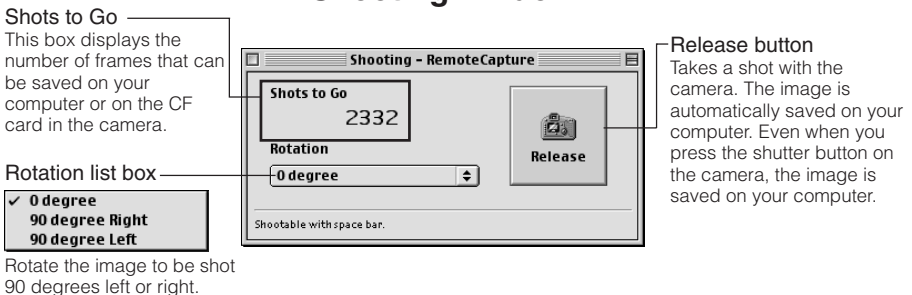


Selecting [Camera Setting...] from the [File] menu allows you to specify the camera settings. For information on how to specify the camera settings, see Chapter 6 "Specifying Camera Settings from Your Computer".

## Save window



## Shooting window



# Taking Shots from Your Computer

You can control the camera from your computer and take single-frame shots, timer shots and interval timer shots. The images are automatically saved on your computer.

Shots taken with RemoteCapture and saved on your computer can be displayed and image-processed in the Plug-In Module in the same way as images shot with the camera.

Refer to the Help file for more information on using RemoteCapture.

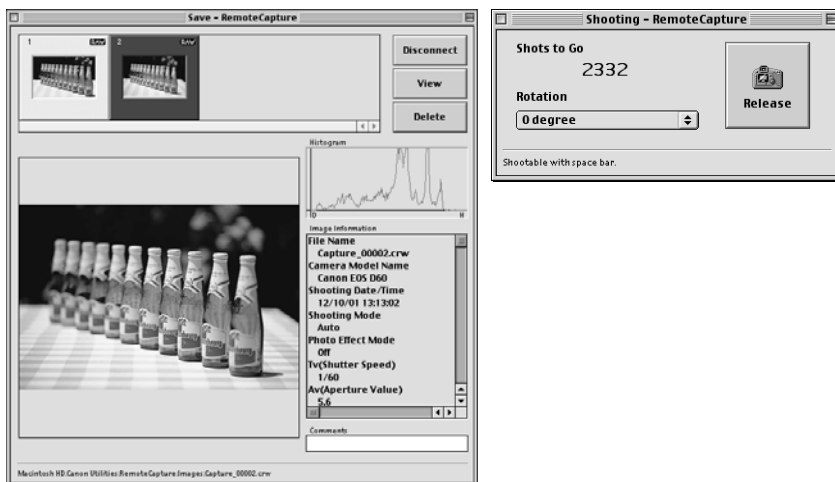
## Using RemoteCapture

### 1 Set the camera up ready to take pictures.

- Focus the camera manually (Manual focus).

### 2 Click the [Release] button.

- ➔ The image is saved to your computer and displayed on the screen.



- To enlarge the image for checking, select the image and click the [View] button.  
➔ The image is displayed enlarged in a separate window.
- To delete the image, select the image and click the [Delete] button.  
➔ The image is deleted.



- Because RAW images are processed before being displayed, there is a short delay before the images appear.
- When you select an EOS D60 RAW image and click the [View] button, or when you select [Display in Viewer] in the [View] menu, the JPEG image (Middle/Fine) simultaneously recorded with the RAW image is displayed.
- To load an image rotated, select [90 degrees Right] or [90 degrees Left] in [Rotation] list box before clicking the [Release] button.
- To rotate a downloaded image, select the image and then select [Rotate Saved Image 90 degrees Right] or [Rotate Saved Image 90 degrees Left] in the [Edit] menu.

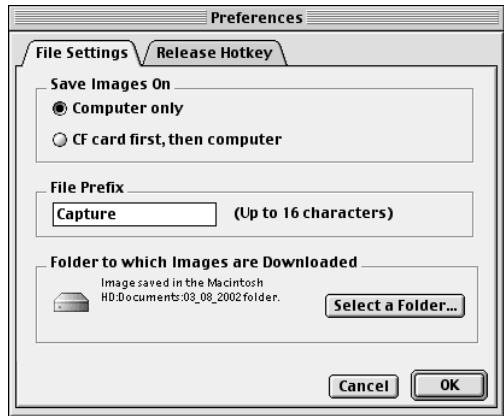
# Default Settings

Use the procedure below to select the folder in which images will be saved and to specify the file names.

- 1** Select **[Preferences...]** in the **[File]** menu.  
→ The **[Preferences]** dialog box appears.



Preferences dialog box



- 2** Select the save destination in which images will be saved.

- Click the **[Computer only]** or **[CF card first, then computer]** radio button.

## Save Images On

- ☒ **Computer only**
- ☐ **CF card first, then computer**

- **[Computer only]**  
This option allows you to take shots when there is no CF card in the camera or when the CF card is full.
- **[CF card first, then computer]**  
This option saves the images both on your computer and on the CF card in the camera.

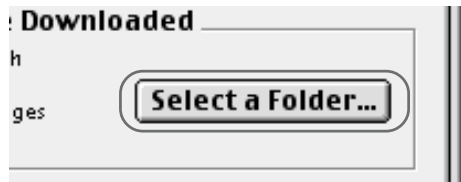
### 3 Enter the file name to be used when images are saved.



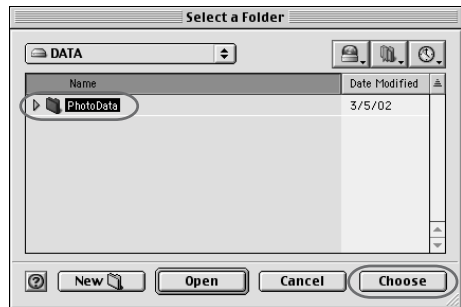
- If you enter [Capture], sequential file names will be assigned automatically beginning with [Capture\_0001.jpg] or [Capture\_0001.tif].
- File names can include up to 16 characters.

### 4 Select the folder in which the images will be saved.

- Click the [Select a Folder...] button.
- ➔ The [Select a Folder] dialog box appears.



- Select the folder in which the images will be saved and click the [Choose] button.
- To create a new folder in which to save images, click the [New] button to create a new folder inside the current folder.
- ➔ The path for the selected folder appears in the [Folder to which Images are Downloaded] field.



### 5 Click the [OK] button.

- ➔ The settings are saved and the [Preferences] dialog box closes to end the procedure.



You can set the Hotkey for shutter release by selecting the [Release Hotkey] tab.

## Printing Images

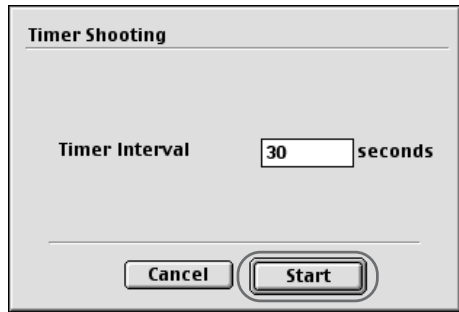
You can print images. All the images shown in the thumbnail view are printed in index format. The time of shooting and the file names are printed with the images.

- 1 Select [Print Index...] in the [File] menu.**  
→ The [Printer Setup] dialog box appears.
- 2 Select the printer to be used, specify the print settings and click the [OK] button.**  
→ The images are printed.

## Timer Shooting

Use this function to specify the timer delay. Timer shooting shots are then taken after the specified number of seconds.

- 1 Select [Timer Shooting...] in the [File] menu.**  
→ The [Timer Shooting] dialog box appears.
- 2 Enter a number of seconds and click the [Start] button.**
  - You can set a value between 2 and 30 seconds in 1-second increments.
  - Timer shooting are taken after the specified number of seconds.



## Interval Timer Shooting

This function allows you to specify the interval between shots and the number of shots.

- 1 Select [Interval Timer Shooting...] in the [File] menu.**  
→ The Interval Timer Shooting warnings dialog box appears.
  - 2 Check the information in the warnings and then click the [Yes] button.**  
→ The [Interval Timer Shooting] dialog box appears.
  - 3 Enter the shooting interval and the number of shots, and then click the [Start] button.**
    - You can set a shooting interval between 5 seconds and 60 minutes in 1-second increments.
    - You can set up to a maximum of 9999 shots.
- Interval timer shooting is performed using the specified interval between shots and the specified number of shots.

The screenshot shows a dialog box titled "Interval Timer Shooting". It has two main sections. The first section is labeled "Interval" and contains two input fields: "5" for minutes and "0" for seconds. The second section is labeled "Total No. of Frames" and contains an input field with the value "30". At the bottom of the dialog, there are two buttons: "Cancel" and "Start".



On some types of computer, if you set a short interval between shots and there is insufficient time to download and save the images, it may not be possible to take shots at the specified interval. If this occurs, set a longer interval between shots and take the shots again.



Depending on the available capacity on your computer's hard disk, the maximum number of available shots that can be set may be less than 9999. You can check the number of shots that can be set by referring to the number of available shots shown in the Shooting window. (→7-3)



# 8

## **Working with Images in ImageBrowser**

---

This chapter explains how to use ImageBrowser to perform a range of operations from downloading the camera's images to printing them.

# Starting ImageBrowser

You can start up ImageBrowser either from the [ImageBrowser Automation wizard] dialog box that appears when you connect the camera to your computer, or by double-clicking the ImageBrowser icon.

## Starting ImageBrowser from the [ImageBrowser Automation wizard] Dialog Box

When you connect the camera to your computer, start up ImageBrowser from the [ImageBrowser Automation wizard] dialog box.

### 1 Connect the camera to your computer.

- For more information on connecting the camera to your computer, see “Connecting the Camera to Your Computer” (→2-2).
- ➔ The [ImageBrowser Automation wizard] dialog box appears.

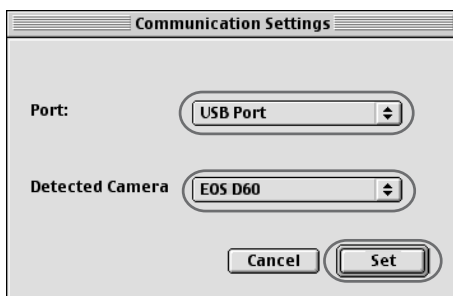
### 2 Confirm that [Display Images] radio button is selected and click the [OK] button.

- ➔ The [Communication Settings] dialog box appears.



### 3 Confirm that [USB Port] is selected in the [Port] list box and that [EOS D60] is selected in the [Detected Camera] list box, then click the [Set] button.

- ➔ The Camera window and Browser window appear.
- The [Communication Settings] dialog box only appears the first time the camera is connected.



To set up the software so that ImageBrowser does not start up when you connect the camera to your computer, see “Disabling ImageBrowser Auto Start” (→8-4).

## What to Do the Next Time ImageBrowser is Started

The automatic processing settings selected previously are displayed in the [ImageBrowser Automation wizard] dialog box. To use these settings unchanged, click the [Start] button. To do nothing, click the [Cancel] button. To change the settings, click the [Settings change] button.



➔ When you click the [Settings change] button, the window changes as shown below.



- When the [Display Images] radio button is selected, click the [OK] button.
- ➔ The Camera window appears.
- When the [Download images] radio button is selected, click the [Next] button and then proceed as instructed by the on-screen messages.
- ➔ The images on the camera are downloaded.
- When you select the [Launch RemoteCapture] radio button, click the [OK] button.
- ➔ RemoteCapture (→7-2) starts up.



For more information on using the [ImageBrowser Automation wizard] dialog box, refer to the ImageBrowser Help menu or PDF manual, ImageBrowser Software User's Guide.

## Starting ImageBrowser Using the Icon

When automatic ImageBrowser startup has been disabled, or when you want to download images from a folder on your computer or from a card reader without connecting the camera to your computer, use the [Canon ImageBrowser] icon to start ImageBrowser.

### Double-click the [Canon ImageBrowser] icon.

- Double-click the [Canon ImageBrowser] icon on the desktop or the [Canon Utilities] folder ► [ImageBrowser] folder ► [ImageBrowser] icon.
- ➔ The Browser window appears.



## Disabling ImageBrowser Auto Start

Use the procedure below to set up your software so that ImageBrowser does not start up automatically when you connect the camera to your computer.


### 1 Select the Apple menu ► [Control Panels] ► [Canon ImageBrowser Auto Launch].

- ➔ The [Settings for USB connection] dialog box appears.

### 2 Uncheck the [The application program below will start.] checkbox.



### 3 Close the [Settings for USB connection] dialog box.

- Click the close box  at the upper left of the dialog box. The [Settings for USB connection] dialog box will close.
- ➔ ImageBrowser will cease to start automatically thereafter.

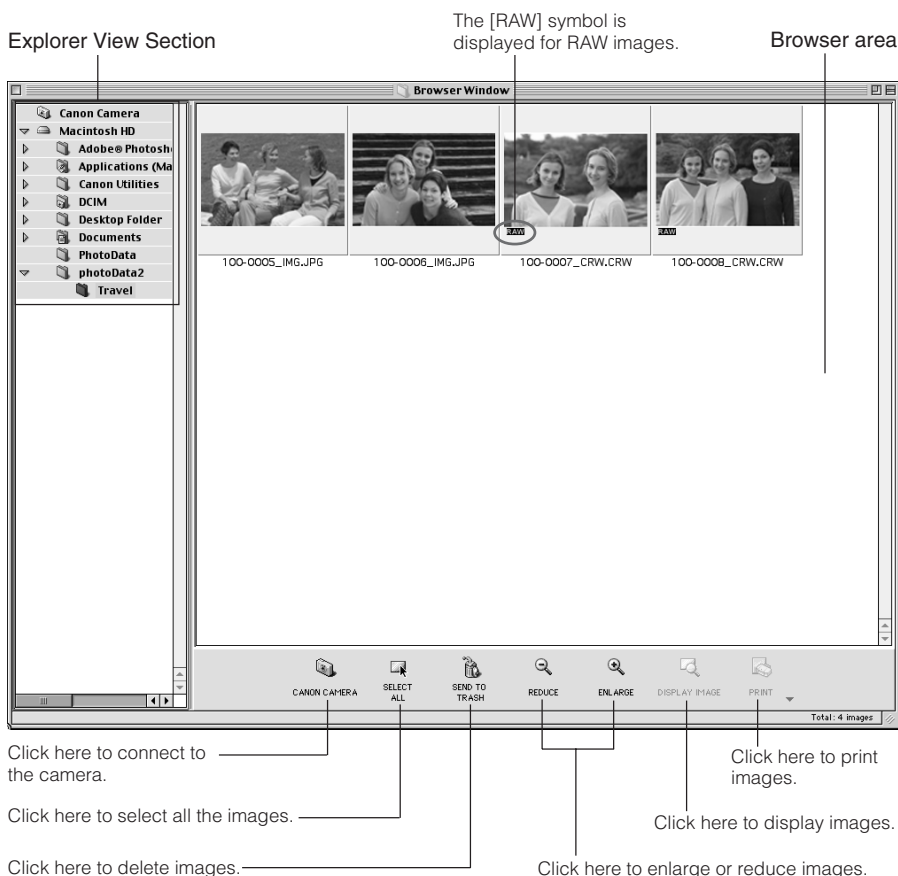
# The ImageBrowser Window

When you start ImageBrowser, the Browser window appears. Then, when the connection to the camera opens, the Camera window appears.



For more information on using ImageBrowser, refer to the ImageBrowser Help menu or PDF manual, ImageBrowser Software User's Guide.

## Browser window



## Camera window

An image of the connected camera or CF card will be displayed here.

Thumbnail

The [RAW] symbol is displayed for RAW images.



Sets various camera settings. See "Specifying the Camera Settings" (→6-2) for information on how to specify the settings.

Reconnects the camera to your computer.

Lets you choose the image selection method.

Click here to delete images.

Downloads the selected images onto the computer.

Click here to print images.

Rotates images displayed as thumbnails.

Saves images from the computer onto the CF card in the camera.

Displays the shooting data.

Lets you edit the slide show and DPOF print specifications.

# Downloading and Saving Images

The procedure below describes how to download and save images from a CF card loaded in the camera or in a card reader.

## 1 Display the images.

- To display the images on the camera, click the [CANON CAMERA] button.
- If ImageBrowser started up automatically, the [ImageBrowser Automation wizard] dialog box appears. If you click the [Settings change] button, select the [Display Images] radio button and then click the [OK] button, the images on the camera automatically appear in the Camera window.
- ➔ In the Camera window, the images on the camera are displayed as thumbnails (reduced images).
- To display the images from a card reader, double-click the [DCIM] folder in the Explorer View Section.
- ➔ The images from the CF card will be displayed as thumbnails in the Camera window.



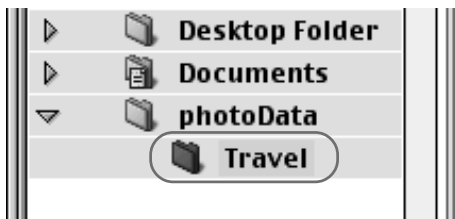
## 2 Create a new folder in which to save the images stored on the camera.

- In the Explorer View Section, choose the location where you want to create the new folder and then select [New Folder] in the [File] menu.
- ➔ A new folder is created.



### 3 Type in the folder name.

- Once you have typed in the folder name, leave the folder selected.




### 4 Select the images you wish to download from the Camera window and click the [DOWNLOAD] button.

- Click a thumbnail to select the corresponding image.



➔ Downloaded images are saved to the computer and appear in the Browser area.



- You can also download images to the computer by dragging them from the Camera window and dropping them on the Browser area or Explorer View Section.
- To disconnect the camera, click the close box  at the upper left of the Camera window. The Camera window will close.



# Processing RAW Images with ImageBrowser ■

To process RAW images in the ImageBrowser, start from RAW Image Converter.

## 1 Select a RAW image.

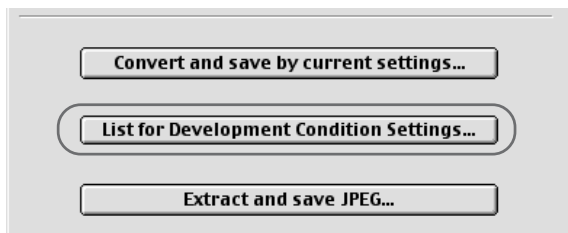
- Select a RAW image from the Browser area of ImageBrowser.

## 2 Click the [File] menu and select [RAW Image processing...].

→ The RAW Image Converter main window appears.

## 3 Click the [List for Development Condition Settings...] button.

- The RAW image appears as a thumbnail image in the Plug-In Module main window.
- See “Processing RAW Images” (→3-18) for information on how to process RAW images.



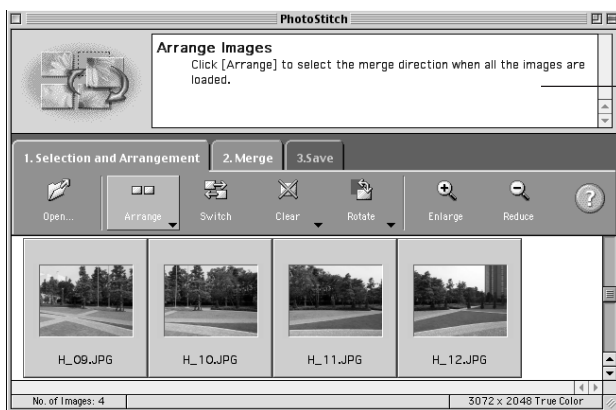
For more information on using the RAW Image Converter, see “Using RAW Image Converter” (→5-2).

# Merging Panoramic Images with PhotoStitch

You can merge a series of overlapping images into a single, seamless panorama.

**Select the JPEG images in the Browser window, click the [Edit] menu and select [PhotoStitch...].**

- ➔ PhotoStitch starts up.
- Follow the instructions in the guidance window to merge the images.
- Please refer to the PhotoStitch Help menu for more details.



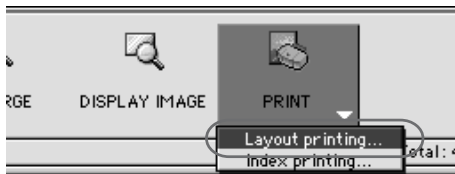
Follow the instructions to merge the images.



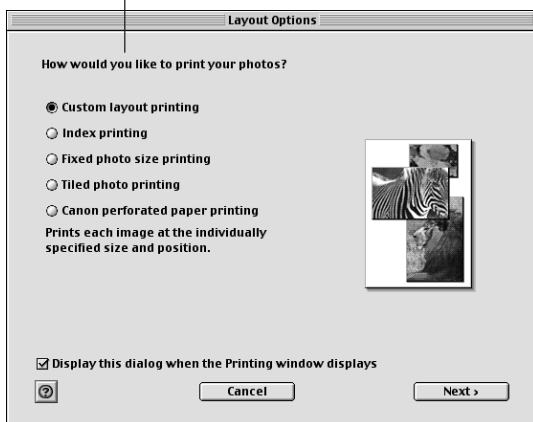
You cannot open RAW images in PhotoStitch.

# Printing Images

- 1 Select the image(s) you wish to print.
- 2 Click the [PRINT] button and select [Layout printing...] from the displayed menu.



Layout Options dialog box



Print window

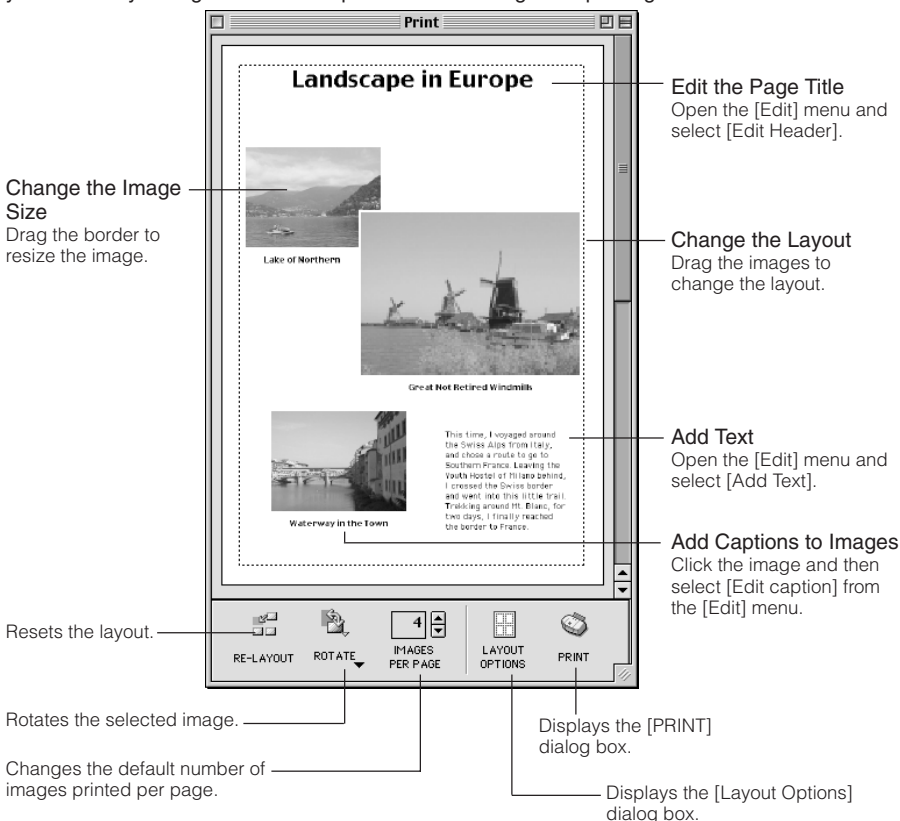
- 3 Select a layout and click the [Next] button.
  - Select the [Custom layout printing] radio button for the purposes of this example.
- 4 In the next dialog box, select a paper size and click the [OK] button.
  - ➔ The [Layout Options] dialog box will close and the Print window will open, allowing you to change the layout and printing settings.
  - If you wish to change the layout, set the printing settings in the Print window.
- 5 Click the [PRINT] button in the Print window.
  - ➔ The [Print] dialog box appears.

# 6 Click the [PRINT] button.

→ The images are printed.

## Print window

When the [Custom layout printing] radio button is selected in the [Layout Options] dialog box, you can freely change the size and position of the images for printing.



- The [Custom layout printing] radio button in the [Layout Options] dialog box allows you to freely change the size and position of the images for printing. The other options allow you to print an index or print onto Canon perforated paper. For more details on the [Layout Options] dialog box, refer to the PDF manual, ImageBrowser Software User's Guide.
- The settings available in step 3 vary depending on type of printing selected in step 2.

# 9

## **Troubleshooting and Uninstallation**

---

This chapter provides a troubleshooting manual and describes the software uninstallation procedures.

# Troubleshooting

When the “Could not complete installation correctly” or “Communication between the camera and computer failed” message appears, check the items described below.

## **I have installed the EOS D60 software but the camera and computer cannot communicate.**

---

### ● **Are you using the following type of computer?**

- A Macintosh computer with a USB connector as a standard feature.  
(\* A Macintosh computer does not support USB connections that are not a standard feature of the computer.)

### ● **Are the camera and your computer connected correctly?**

- Connect the camera to your computer correctly using the interface cable. (→2-2)

### ● **Is there sufficient charge left in the camera battery?**

- Your computer does not supply power to the camera. Connect the DC Coupler Kit to the camera or load a fully charged battery into the camera before connecting it to your computer. (→ “Inserting and Removing the Battery Pack” in the EOS D60 Instructions.)

### ● **Do you have more than one interface cable connected?**

If you connect more than one interface cable to the same computer, the Plug-In Module and camera may not operate normally.

- Shut down the Plug-In Module and disconnect all the interface cables. Then reconnect just the interface cable that connects the camera to your computer.

### ● **Did you try to use the camera on a first-generation iMac without updating your system software to Mac OS 8.6 or later?**

Update the firmware using the iMac Firmware Update and then update the system software to Mac OS 8.6 or Mac OS 9.

- You can download the iMac Firmware Update from Apple's web site.
- Purchase Mac OS 8.6 or Mac OS 9 from your Apple retailer.

# Uninstallation Procedure

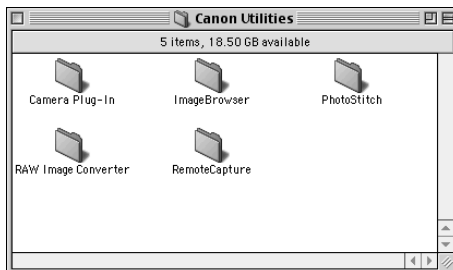
- Before beginning the software uninstallation, close any other software you are using and disconnect the interface cable from your computer.
- When you have moved the software in the folders, control panels and extensions to be deleted to the Trash, select [Empty Trash...] from the [Special] menu and empty the Trash. You cannot reinstall the software until you have emptied the Trash.
- When you uninstall ImageBrowser, first use the procedure in [Uninstalling the Software] to delete the [ImageBrowser] folder and then use the procedure in [Uninstalling USB Mounter] to delete [Canon ImageBrowser Auto Launch] in the Control Panels.

## Uninstalling the Software

This section uses the Plug-In Module as an example to illustrate how to uninstall the software. The same procedure can be used to uninstall other software products, with the exception of step 3. Step 3 is only required when you uninstall the Plug-In Module.

### 1 Display the folder containing the [Camera Plug-In] folder.

- Open the [Canon Utilities] folder.



### 2 Drag the [Camera Plug-In] folder to the Trash and empty the Trash.

### 3 Drag the Plug-In Module you copied to the Trash and empty the Trash.

- Drag [Canon Camera Plug-In 4] that you copied to the [Plug-Ins] folder for your application program to the Trash and empty the Trash.
- If you use the Photoshop 5.0 LE application bundled, drag the [Canon Camera Plug-In 4] file that was copied into the [Import/Export] folder inside the [Plug-Ins] folder to the Trash and then empty the Trash.



- When you drag the folder to the Trash, take great care not to delete any important images at the same time.
- When uninstallation ends, restart your computer.

## Uninstalling USB Mounter

USB Mounter components are installed in the [Control Panels] and [Extensions] folders. Consequently, its uninstallation procedure is different from that of the other programs.

- 1** Display the [System Folder].
- 2** Double-click the [System Folder] and then [Control Panels] to open.
- 3** Drag the [Canon USB Camera Driver] file to the Trash and empty the Trash.
- 4** Double-click the [System Folder] ► [Extensions] to open.
  - If there is no [Canon USB CameraMounter] file in the [Extensions] folder, open [Extensions (Disabled)] in the [System Folder].
- 5** Drag the [Canon USB CameraMounter] file to the Trash and empty the Trash.

## Uninstalling Photoshop 5.0 LE

- 1** Display the folder containing the [Adobe Photoshop 5.0 LE] folder.
- 2** Drag the [Adobe Photoshop 5.0 LE] folder to the Trash and empty the Trash.



- When you drag the folder to the Trash, take great care not to delete any important images at the same time.
- When uninstallation ends, restart your computer.



# Index

## B

Browser window ..... 8-5

## C

Camera Connection button ..... 3-4, 3-5  
 Camera Settings button ..... 3-3, 6-2  
 Camera Settings dialog box ..... 6-3  
 Camera window ..... 8-6  
 CF Card Folder Structure and File  
 Names ..... 2-4  
 Checkmark button ..... 3-4, 3-14  
 Click white balance button ..... 3-4, 3-21  
 Click white balance checkbox ..... 3-4, 3-21  
 Click White Balance Function ..... 3-21  
 Color tone list box ..... 3-3, 3-22  
 Comment input box ..... 3-3, 3-16  
 Communication Setup button ..... 3-2, 3-3  
 Contrast list box ..... 3-3, 3-22

## D

Digital Exposure Compensation ..... 3-19  
 Digital Exposure Compensation button  
 ..... 3-4, 3-19  
 Disabling ImageBrowser Auto Start ..... 8-4  
 Display Mode list box ..... 3-3, 3-9  
 Display Size list box ..... 3-3, 3-11

## E

Erase button ..... 3-4, 3-17  
 Exit button ..... 3-2, 3-4, 3-33

## H

How to Disable the USB Mounter ..... 4-2

## I

Image display format list box ..... 3-3, 3-8  
 Image Display Formats ..... 3-7  
 Image information display area ..... 3-3, 3-16  
 Image recording formats and image  
 processing options ..... 3-13  
 Image transfer mode list box ..... 3-3, 3-32  
 ImageBrowser ..... VII

Index Sheet Transfer Options dialog  
 box ..... 3-32

## J

JPEG Extract dialog box ..... 3-28  
 JPEG Preview ..... 3-10

## O

Open Folder button ..... 3-4, 3-6

## P

Photoshop 5.0 LE ..... VIII  
 PhotoStitch ..... VII  
 Plug-In Module ..... VII  
 Plug-In Module main window ..... 3-3  
 Preferences button ..... 3-3, 3-29  
 Preferences dialog box ..... 7-5  
 Preferences dialog box  
     General Settings tab sheet ..... 3-29  
     RAW Image Processing Settings tab  
     sheet ..... 3-30  
 Preview ..... 3-10  
 Print window ..... 8-12  
 Protect button ..... 3-4, 3-15

## R

RAW Image Converter ..... VII  
 RAW Image Converter main window ..... 5-2  
 RemoteCapture ..... VII  
 RemoteCapture  
     Save window ..... 7-3  
     Shooting window ..... 7-3  
 Remove checkmark button ..... 3-4, 3-14  
 Remove protect button ..... 3-4, 3-15  
 Rotate left 90 degrees button ..... 3-3, 3-17  
 Rotate right 90 degrees button ..... 3-3, 3-17

## S

Saturation list box ..... 3-3, 3-22  
 Save File button ..... 3-4, 3-23, 3-27  
 Save File dialog box ..... 3-25  
 Select button ..... 3-4, 3-16



Select image folder display area ..... 3-3, 3-5

Setting the Date and Time ..... 6-4

Setting the Owner's Name ..... 6-4

Show Version button ..... 3-4

**T**

Thumbnail display ..... 3-9

Transfer Image button ..... 3-4, 3-32

**U**

USB Mounter ..... VII

**W**

White Balance ..... 3-20

White balance list box ..... 3-4, 3-20

# Adobe Customer Support

Adobe Systems Inc. technical support information is available in the PDF file format on the supplied CD-ROM.

## PDF File Location and Opening Instructions

Place the Adobe Photoshop LE CD-ROM in the drive. The window will open automatically and show folders with language names. Double-click the appropriate language folder and the [Support.pdf] file within it.

- To read PDF files, Adobe Acrobat Reader must already be installed on your computer. An installer for this program is on the Adobe Photoshop LE CD-ROM within each language folder in a folder labeled [Adobe Acrobat Reader].



**CANON INC.** 30-2, Shimomaruko 3-chome, Ohta-ku, Tokyo 146-8501, Japan

**U.S.A. \_\_\_\_\_ CANON U.S.A. INC.**

For all inquiries concerning this camera, call toll free in the U.S.  
1-800-OK-CANON or write to: Customer Relations, Canon U.S.A., Inc.  
One Canon Plaza, Lake Success, N.Y. 11042-1198

**CANADA \_\_\_\_\_ CANON CANADA INC. HEADQUARTERS**

6390 Dixie Road, Mississauga, Ontario L5T 1P7, Canada

**CANON CANADA INC. MONTREAL BRANCH**

5990, Côte-de-Liesse, Montréal Québec H4T 1V7, Canada

**CANON CANADA INC. CALGARY OFFICE**

2828, 16th Street, N.E. Calgary, Alberta T2E 7K7, Canada

For all inquiries concerning this camera, call toll free in Canada  
1-800-OK-CANON

**EUROPE, \_\_\_\_\_ CANON EUROPA N.V.**

**AFRICA &**  
**MIDDLE EAST** Bovenkerkerweg 59-61, P.O. Box 2262, 1180 EG Amstelveen,  
The Netherlands

**CANON COMMUNICATION & IMAGE FRANCE S.A.**

102, Avenue du Général de Gaulle 92257 La Garenne-Colombes Cedex, France

**CANON UK LTD.**

Woodhatch Reigate Surrey RH2 8BF, United Kingdom

**CANON DEUTSCHLAND GmbH**

Europark Fichtenhain A10, 47807 Krefeld, Germany

**CANON ITALIA S.p.A.**

Palazzo L, Strada 6, 20089 Rozzano, Milanofiori, Milano, Italy

**CANON Benelux N.V./S.A.**

Bessenveldstraat 7, 1831 Diegem (Machelen), Belgium

**CANON Schweiz AG**

Geschäftsbereich Wiederverkauf, Industriestrasse 12, CH-8305 Dietlikon,  
Switzerland

**CANON G. m. b. H.**

Oberlaaerstrasse 233, 4th floor, 1100 Wien, Austria

**CANON España, S. A.**

C/Joaquín Costa, 41, 28002 Madrid, Spain

**SEQUE Soc. Nac. de Equip., Lda.,**

Praça da Alegria, 58, 2º, 1269-149 Lisboa, Portugal

**CENTRAL & \_\_\_\_\_ CANON LATIN AMERICA, INC. DEPTO DE VENTAS**

**SOUTH AMERICA** 703 Waterford Way Suite 400 Miami, FL 33126 U.S.A.

**CANON LATIN AMERICA, INC. CENTRO DE SERVICIO Y  
REPARACION**

Apartado 2019, Zona Libre de Colón, República de Panamá

**ASIA \_\_\_\_\_ CANON HONGKONG CO., LTD.**

9/F, The Hong Kong Club Building, 3A Chater Road, Central, Hong Kong

**CANON SINGAPORE PTE. LTD.**

79 Anson Road, #09-01 / 06, Singapore 079906

**OCEANIA \_\_\_\_\_ CANON AUSTRALIA PTY. LTD.**

1 Thomas Holt Drive, North Ryde, N.S.W. 2113, Australia

**CANON NEW ZEALAND LTD.**

Fred Thomas Drive, P.O. Box 33-336, Takapuna, Auckland, New Zealand

**JAPAN \_\_\_\_\_ CANON SALES CO., INC.**

12-15 Mita, 3-Chome, Minato-ku, Tokyo 108-8011, Japan

This Instructions booklet is current as of January 2002. For information on using the camera with system accessories introduced after this date, contact your nearest Canon Service Center.