

Canon

EOS D60

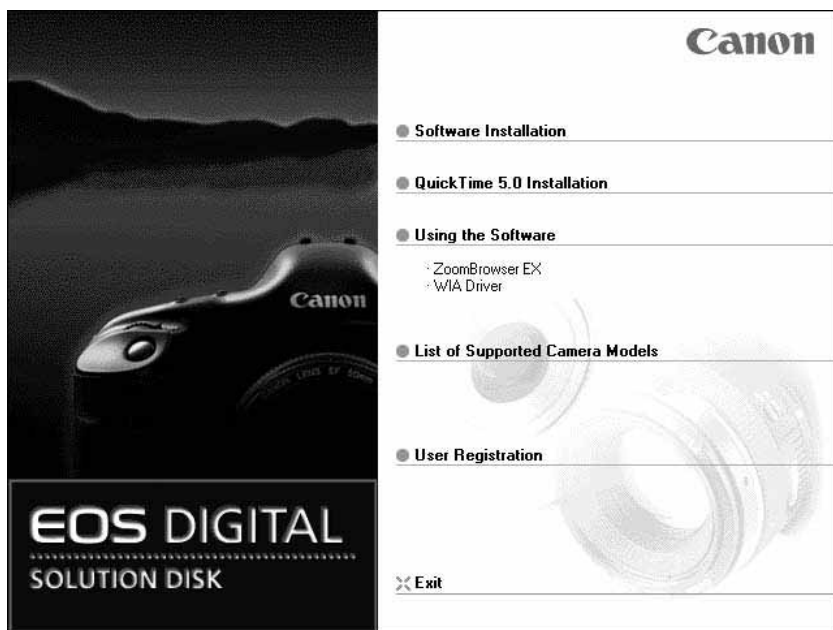
DIGITAL

Software

Windows

INSTRUCTIONS

EOS DIGITAL SOLUTION DISK



Please read these instructions carefully before using the EOS D60 software.
This guide should be kept in a safe place so that it can be used for future reference.



E
English Edition

READ CAREFULLY BEFORE USING!

CANON SOFTWARE LICENSE AGREEMENT

IMPORTANT - READ THIS AGREEMENT BEFORE USING THE SOFTWARE ON THE CD-ROM IN THIS BOX. BY USING THE SOFTWARE, YOU AGREE TO BE BOUND BY THE TERMS OF THIS AGREEMENT.

This is a license agreement (the [Agreement]) between you and Canon Inc. ([Canon]).

IF YOU DO NOT AGREE TO THE TERMS AND CONDITIONS OF THIS AGREEMENT, DO NOT USE THE SOFTWARE PROGRAM ON THE CD-ROM AND THE USER MANUAL IN THIS BOX (COLLECTIVELY, THE [SOFTWARE]) AND RETURN THE SOFTWARE WITHIN 30 DAYS FROM THE DATE OF PURCHASE TO YOUR POINT OF PURCHASE FOR A REFUND.

In consideration of the right to use the SOFTWARE, you agree to abide by the terms and conditions of this Agreement.

1. **LICENSE:** Canon grants you the non-exclusive right to use the SOFTWARE only on a single computer. You may physically transfer the SOFTWARE from one computer to another provided that the SOFTWARE is used on only one computer at a time. You shall not install or use the SOFTWARE on a network, multiple CPU, multiple site arrangement, or any other hardware configuration where the SOFTWARE is accessible to more than one CPU or to more than one user.

YOU SHALL NOT ASSIGN, SUBLICENSE, RENT, LEASE, LOAN, CONVEY OR OTHERWISE USE, TRANSFER, COPY, TRANSLATE, CONVERT TO ANOTHER PROGRAMMING LANGUAGE, ALTER, MODIFY, DECOMPILE OR DISASSEMBLE THE SOFTWARE, IN WHOLE OR IN PART, EXCEPT AS EXPRESSLY PROVIDED IN THIS AGREEMENT.

2. **BACK-UP COPY:** You may make one copy of the SOFTWARE solely for back-up purposes, or copy the SOFTWARE onto the permanent storage device (e.g. a hard disk) of your computer and retain the original for back-up purposes. Any other copying of the SOFTWARE is a violation of this Agreement. You must reproduce and include the copyright notice on the back-up copy.
3. **SUPPORT AND UPDATES:** Canon is not responsible for providing maintenance or support for use of the SOFTWARE. No updates, fixes or support will be made available for the SOFTWARE.
4. **LIMITED WARRANTY AND LIMITATION OF LIABILITY:** It is your responsibility to choose, maintain and match the hardware and software components of your computer system. Thus Canon does not guarantee uninterrupted service or correction of errors or that the functions or performance of the SOFTWARE will meet your requirements. THE SOFTWARE IS LICENSED ON AN [AS IS] BASIS AND WITHOUT WARRANTY OF ANY KIND. The CD-ROM storing the SOFTWARE is warranted only against defective material under normal use for a period of ninety (90) days after purchase from an authorized Canon dealer as evidenced by your sales receipt. Your sole remedy for a defective CD-ROM shall be replacement of the same without charge when returned by you at your expense to your point of purchase and proven to be defective upon inspection. The replacement CD-ROM will be warranted for the remainder of the original ninety (90) day warranty period of the defective CD-ROM. The limited warranty does not apply if the failure of the CD-ROM resulted from accident, abuse or misapplication of the SOFTWARE and shall not extend to anyone other than the original user of the SOFTWARE.

EXCEPT AS SPECIFICALLY SET FORTH IN THIS PARAGRAPH 4, CANON, CANON'S

SUBSIDIARIES, DISTRIBUTORS AND DEALERS DISCLAIM ALL WARRANTIES, EXPRESS OR IMPLIED, INCLUDING ANY WARRANTY OF MERCHANTABILITY OR FITNESS FOR A PARTICULAR PURPOSE, WITH RESPECT TO THE SOFTWARE.

NEITHER CANON NOR ANY OF CANON'S SUBSIDIARIES, DISTRIBUTORS OR DEALERS IS LIABLE FOR ANY DAMAGES HOWSOEVER CAUSED, INCLUDING WITHOUT LIMITATION, DIRECT, CONSEQUENTIAL OR INCIDENTAL LOSS OR DAMAGE INCLUDING LOSS OF PROFITS, EXPENSE OR INCONVENIENCE HOWSOEVER CAUSED OR ARISING OUT OF THE SOFTWARE OR THE USE THEREOF.

NEITHER CANON, NOR ANY OF CANON'S SUBSIDIARIES, DISTRIBUTORS OR DEALERS SHALL HAVE ANY OBLIGATION TO INDEMNIFY YOU AGAINST ANY CLAIM OR SUIT BROUGHT BY A THIRD PARTY ALLEGING THAT THE SOFTWARE OR THE USE THEREOF INFRINGES ANY INTELLECTUAL PROPERTY OF SUCH THIRD PARTY.

5. **TERM:** This Agreement is effective upon your using the SOFTWARE and remains in effect until expiration of all copyright interests in the SOFTWARE unless earlier terminated. You may terminate this Agreement by destroying the SOFTWARE. This Agreement will also terminate without notice to you if you fail to comply with any of the terms of this Agreement and you must then promptly return the SOFTWARE. In addition, Canon may enforce its other legal rights.
6. **U.S. GOVERNMENT RESTRICTED RIGHTS NOTICE:** The SOFTWARE is provided with restricted rights. Use, duplication or disclosure is subject to restrictions as set forth in either subparagraph (c) (1) (ii) of the Rights in Technical Data and Computer software clause at DFARs 252.227-7013 or subparagraph (c) (1) and (2) of the Commercial Computer Software Restricted Rights Clause at FAR 52.227-19, as applicable.
7. **SEVERABILITY:** In the event that any provision of this Agreement is declared or found to be illegal by any court or tribunal of competent jurisdiction, such provision shall be null and void with respect to the jurisdiction of that court or tribunal and all the remaining provisions of this Agreement shall remain in full force and effect.
8. **CONTROLLING LAW:** The terms of this Agreement as it relates to purchases of the Software in the United States of America shall be governed and construed in all respects in accordance with the laws and regulations of the State of New York, without reference to choice of law principles. The terms of this Agreement as it relates to purchases of the Software in Canada shall be governed by the laws of the province of Ontario.
9. **OWNERSHIP:** All rights, including but not limited to copyrights and trade secret rights, to the SOFTWARE belong to Canon, its affiliated corporations and third party licensors. Your use of the SOFTWARE is subject to the United States, Canada and other applicable copyright and trademark laws and nothing in this Agreement constitutes a waiver of the rights of Canon, its affiliated corporations and third party licensors under such laws. Nothing contained in Paragraph 1 shall be construed to give Canon any ownership rights in any images, graphics or textual material that you save in connection with the Software.
10. **ACKNOWLEDGEMENT:** BY USING THE SOFTWARE, YOU ACKNOWLEDGE THAT YOU HAVE READ THIS AGREEMENT, UNDERSTOOD IT, AND AGREE TO BE BOUND BY ITS TERMS AND CONDITIONS. YOU ALSO AGREE THAT THIS AGREEMENT IS THE COMPLETE AND EXCLUSIVE STATEMENT OF AGREEMENT BETWEEN YOU AND CANON CONCERNING THE SUBJECT MATTER HEREOF AND SUPERSEDES ALL PROPOSALS OR PRIOR AGREEMENTS, VERBAL OR WRITTEN, AND ANY OTHER COMMUNICATIONS BETWEEN THE PARTIES RELATING TO THE SUBJECT MATTER HEREOF. NO AMENDMENT TO THIS AGREEMENT SHALL BE EFFECTIVE UNLESS SIGNED BY A DULY AUTHORIZED OFFICER OF CANON.

Contents

READ CAREFULLY BEFORE USING! I

Safety Precautions V

Disclaimer	V
Trademark Acknowledgments	V
About These Instructions and the Symbols Used	V
About the ZoomBrowser EX Software Guide	VI
About the WIA Driver	VI
About QuickTime	VI

About the Software VII

EOS DIGITAL SOLUTION DISK	VII
Adobe Photoshop 5.0 LE DISK	VIII

Computer System Requirements IX

1 Installing the Software 1-1

Installing the Software 1-2

EOS DIGITAL SOLUTION DISK Installation	1-2
Installing Photoshop 5.0 LE	1-4
Complete the Installation of the TWAIN and WIA Drivers	1-5
Please Register Your Camera!	1-8

2 Getting Ready to Work with Images 2-1

Connecting the Camera to Your Computer 2-2

Inserting a CF Card into Your Card Reader 2-8

3 Working with Images in the TWAIN Driver 3-1

Starting the TWAIN Driver 3-2

Displaying Images 3-6

Displaying Images by Connecting the Camera to Your Computer	3-6
Displaying Images by Connecting a Card Reader	3-7

Selecting the Image Display Format 3-9

Selecting the Display Mode and Display Size 3-10

Selecting the Display Mode	3-10
Selecting the Display Size	3-11

Selecting Images 3-12

Selecting Images with the Mouse	3-12
Selecting Images from the Control Panel	3-12

Working with Selected Images 3-13

Operations that Can Be Used with Images	3-13
Attaching Checkmarks to Selected Images	3-14
Protecting Images	3-15
Selecting Images by Condition	3-16
Checking the Image Information	3-16
Erasing Images	3-17
Rotating Images	3-18

Processing RAW Images 3-19

Correcting the Brightness (Digital Exposure Compensation)	3-20
Adjusting the White Balance	3-21
Adjusting the Color in Images	3-23

Saving Images 3-24

Saving Images from the Camera to Your Computer	3-24
Extracting JPEG Images from RAW Images	3-27

Specifying the Preferences 3-29

Transferring Images to Photoshop 5.0 LE 3-32

4 Downloading Images with the WIA Driver 4-1

Downloading Images 4-2
Downloading with the Scanner and Camera Wizard 4-2
Downloading with Windows Explorer 4-3
Downloading with the WIA TWAIN 4-5

5 Working with Images in RAW Image Converter 5-1

Using RAW Image Converter 5-2

6 Specifying Camera Settings from Your Computer 6-1

Specifying the Camera Settings 6-2

7 Operating the Camera from Your Computer 7-1

Starting RemoteCapture 7-2
Taking Shots from Your Computer 7-4
Using RemoteCapture 7-4
Default Settings 7-5
Printing Images 7-7
Timer Shooting 7-7
Interval Timer Shooting 7-8

8 Working with Images in ZoomBrowser EX 8-1

Starting ZoomBrowser EX 8-2
Starting ZoomBrowser EX from the Event Dialog Box 8-2
Starting ZoomBrowser EX Using the [Start] Button 8-4
The ZoomBrowser EX Window 8-5
Downloading and Saving Images 8-7
ZoomBrowser EX Features 8-9
Switching the Display Mode 8-9
Registering a Folder as a Image Folder 8-10
Refreshing a Folder 8-10
Processing RAW Images with ZoomBrowser EX 8-11
Merging Panoramic Images with PhotoStitch 8-12
Printing Images 8-13

9 Troubleshooting and Uninstallation 9-1

Troubleshooting 9-2
Uninstallation Procedure 9-6
Uninstalling the Software 9-6
Uninstalling the Driver 9-7
Uninstalling Photoshop 5.0 LE 9-16
Index 9-17
Adobe Customer Support 9-19

Safety Precautions

Please read the safety precautions carefully before using this product. Ensure that you use the product correctly according to the procedures described in these instructions.

The following safety precautions are intended to instruct you in the safe and correct operation of the product and its accessories to prevent injuries or damage to yourself, other persons and property. Please read and ensure that you understand them before you proceed to the other sections of these instructions.

Warning

Do not play the supplied CD-ROM(s) in any CD-ROM Player that does not support data CD-ROMs. The extremely loud sound that may result from playing the CD-ROM(s) in an audio CD player (music player) could damage the speakers. It is also possible to suffer hearing losses from listening with headphones to the loud sounds of a data CD-ROM played on a music CD player.

Disclaimer

- While every effort has been made to ensure that the information contained in these instructions is accurate and complete, no liability can be accepted for any errors or omissions. Canon reserves the right to change the specifications of the hardware and software described herein at any time without prior notice.
- No part of these instructions may be reproduced, transmitted, transcribed, stored in a retrieval system, or translated into any language in any form, by any means, without the prior written permission of Canon.
- Canon makes no warranties for damages resulting from corrupted or lost data due to a mistaken operation or malfunction of the camera, the software, the CompactFlash™ cards (CF cards), personal computers, peripheral devices, or use of non-Canon CF cards.

Trademark Acknowledgments

- Canon and EOS are trademarks of Canon Inc.
- Adobe and Photoshop are trademarks of Adobe Systems Incorporated.
- CompactFlash is a trademark of SanDisk Corporation.
- IBM is a registered trademark of International Business Machines Corporation.
- Microsoft and Windows are registered trademarks or trademarks of Microsoft Corporation in the United States and/or other countries.
- Other names and products not mentioned above may be registered trademarks or trademarks of their respective companies.

About These Instructions and the Symbols Used

The information in these instructions is valid for the Windows 98 Second Edition, Windows Me, Windows 2000 and Windows XP operating systems. However, where explanations are common to all the operating systems, the screens shown are from Windows 98 Second Edition (referred to hereafter as Windows 98 SE).

Descriptions of EOS D60 operations assume that the reader is familiar with the information in the bundled EOS D60 Instructions. For detailed information on how to use the software products and the restrictions that apply to those products, refer also to the Help and Readme files for the respective products.



: Marks information that should be read before use to prevent damage to the camera, camera malfunction, or problems that would interfere with the functioning of software and computer.



: Marks additional information that you will find helpful when using the camera or software.

About the ZoomBrowser EX Software Guide

A PDF-format Software Guide that provides detailed instructions for using ZoomBrowser EX is included on the EOS DIGITAL SOLUTION DISK. You will need Adobe Acrobat Reader to view the Software Guide. If you have not already installed Adobe Acrobat Reader on your computer, install it using the procedure below.

Installing Acrobat Reader

- 1 Load the EOS DIGITAL SOLUTION DISK into the CD-ROM drive.
- 2 From [My Computer], open the CD-ROM drive containing the SOLUTION DISK and double-click the following in sequence: [Readme] folder ► [English] folder ► [Acrobat] folder ► [Ar405eng].
- 3 Proceed with the installation as directed by the on-screen messages.

Viewing the ZoomBrowser EX Software Guide

- 1 Load the EOS DIGITAL SOLUTION DISK into the CD-ROM drive.
→ The Installer panel appears automatically.
- 2 Click [Using the software].
- 3 Click [ZoomBrowser EX].
→ Acrobat Reader starts up and the [ZoomBrowser EX Software User Guide] appears.

About the WIA Driver

An HTML-format user manual for the WIA Driver is included on the EOS DIGITAL SOLUTION DISK. You will need a web browser application to view the user manual. If you have not already installed a web browser application on your computer, install it and then perform the procedure below.

- 1 Load the EOS DIGITAL SOLUTION DISK into the CD-ROM drive.
→ The Installer panel appears automatically.
- 2 Click [Using the software].
- 3 Click [WIA Driver (Windows Me/XP Only)].
→ Your web browser starts up and [About WIA Driver] appears.

About QuickTime

To save composite images made using PhotoStitch in the QuickTime VR format, you will need QuickTime 3.0 or later. If you have not already installed QuickTime 3.0 or later on your computer, install it using the procedure below.

- 1 Load the EOS DIGITAL SOLUTION DISK into the CD-ROM drive.
→ The Installer panel appears automatically.
- 2 Click [QuickTime 5.0 Installation].
- 3 Proceed with the installation as directed by the on-screen messages.

About the Software

This section briefly describes the main functions of the software provided on the bundled CD-ROM.

EOS DIGITAL SOLUTION DISK

TWAIN Driver

- This is a driver for Windows 98 SE and Windows 2000 that allows you to connect the EOS D60 to your computer using the interface cable and display the images stored on a CF card in the EOS D60.
- Enables you to display, save and erase images.
- Allows you to process RAW images and then perform image processing.

WIA Driver

- This is a driver for Windows Me and Windows XP that allows you to connect the EOS D60 to your computer using the interface cable and that automatically starts the [Scanner and Camera Wizard] to download your images.
- It also allows you to copy camera images using standard file copying procedures in Windows Explorer (but it cannot upload computer files to the camera).

ZoomBrowser EX

- You can automatically start this program* and use it to display the images stored on the EOS D60 simply by connecting the camera to your computer's USB port. To download images from the EOS D60 to your computer, select the thumbnails (a list of reduced images) on the computer screen.
* ZoomBrowser EX auto start is supported on Windows 98 SE, Windows 2000 and Windows XP only. It is not supported on Windows Me.
- This program displays downloaded images in lists and allow you to sort and organize them by content.
- This program can display images in order according to the shooting date.
- This program can start your email program* and send images as file attachments to it. Since the file size and compression rate can be controlled, you can reduce large image files to sizes small enough for easy transmission.
* The automatic start of email programs is supported by Windows and the email programs must be enabled as MAPI clients.

PhotoRecord

- This program permits you to add backgrounds and borders, as well as titles and comments, and print out the images. You can enjoy preparing prints of your images appearing as if they were pasted into a photo album. Naturally, you can also use it to make artistic single-image layouts.
- Allows you to make index prints using the images saved on your computer and on the camera.
- This program can output your original photo cards or labels (8-label sheets) to Card Photo Printer CP-10 (optional) connected to the computer by interface cable PIF-100 (optional).

RAW Image Converter

- This program processes RAW images that you shot on the EOS D60 and saved onto your computer. You can also use this program to save your images in popular formats such as TIFF (8 or 16 bits/channel) and JPEG.

PhotoStitch

- PhotoStitch provides an easy way to merge a series of overlapping images into a single, seamless panorama by automatically arranging the frames in order. You can use this feature to stitch your shots together into one complete 360° cylinder-shaped panorama image.

RemoteCapture

- RemoteCapture allows you to operate the EOS D60 remotely and download images to your computer. RemoteCapture also lets you take pictures using a timer shooting or interval timer shooting function, in addition to single-frame shooting.

■ Adobe Photoshop 5.0 LE DISK

Photoshop 5.0 LE

- This is a full-featured image retouching program equipped with a complete range of image processing functions. You can also use Photoshop 5.0 LE to start the TWAIN Driver.
- You can use this program with the WIA Driver to display and image-process the images saved on your computer.

* If you already have Photoshop 5.0 LE installed on your computer, you do not need to install it again.

* Explanations for the TWAIN Driver-compatible application in these instructions all use examples from Photoshop 5.0 LE.

Computer System Requirements

Computer	IBM PC/AT-compatible machine equipped with a USB port	
OS	Windows 98 Second Edition Windows Me Windows 2000 Professional Windows XP * Preinstalled versions (upgrades not supported)	
CPU	Windows 98 SE Windows Me Windows 2000	150 MHz Pentium or better
	Windows XP	300 MHz Pentium or better
RAM	Windows 98 SE Windows Me Windows 2000	Minimum 64 MB required, 128 MB or more recommended
	Windows XP	Minimum 128 MB required, 256 MB or more recommended
Interface	USB	
Hard disk space	TWAIN Driver	25 MB or more
	WIA Driver	25 MB or more
	ZoomBrowser EX	120 MB or more
	(Including the PhotoRecord printing program)	
	PhotoStitch	40 MB or more
	RAW Image Converter	15 MB or more
	RemoteCapture	20 MB or more
Display	Adobe Photoshop 5.0 LE	40 MB or more
	800 × 600 dots, 256 colors (8-bit color) or more required 1024 × 768 dots, 64,000 colors (16-bit color) or more recommended	

● A CD-ROM drive is required for software installation.



Installing the Software

This chapter describes the procedure for installing the software for EOS D60 and Photoshop 5.0 LE.

Installing the Software

- You must follow the procedure given below to install the software.
 1. EOS DIGITAL SOLUTION DISK
 2. Photoshop 5.0 LE
 3. Connect the camera and complete the installation.
 - ➔ When you connect the camera to your computer, the driver is automatically installed and driver installation ends. (On Windows 98 SE and Windows 2000, the TWAIN Driver is installed, and on Windows Me and Windows XP, the WIA Driver is installed.)
- ❗ Do not connect the camera to your computer before you have installed the software as this will prevent successful software installation.

EOS DIGITAL SOLUTION DISK Installation

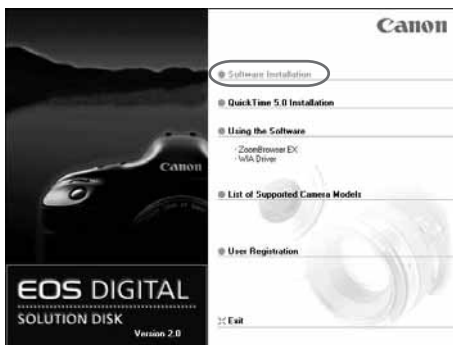
1 Start up your computer.

- Windows 2000 or Windows XP Professional users should log on with [Administrator] privileges.
- Close any programs that are running before you begin installing the software.

2 Load the SOLUTION DISK into the CD-ROM drive.

- ➔ The Installer panel automatically appears.
- If the Installer panel does not appear, double-click [My Computer] on desktop ► the icon for the CD-ROM drive containing the SOLUTION DISK ► [Setup] icon. (Windows XP users should click the [Start] button ► [My Computer], then double-click the icon for the CD-ROM drive containing the SOLUTION DISK ► [Setup] icon.)

3 Click [Software Installation].

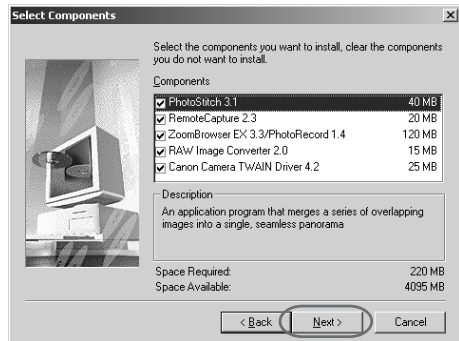


4 Read all of the Software User License Agreement carefully. If you agree to the terms of the license, click the [Yes] button.

5 Select the folder in which the software will be installed and then click the [Next] button.

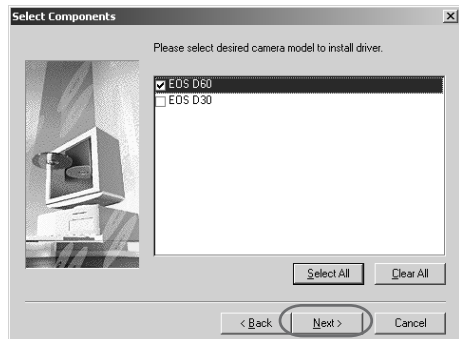
6 Select the software to be installed.

- Click the checkboxes for the software to be installed and then click the [Next] button.



7 Select the EOS D60.

- Click the [EOS D60] checkbox and then click the [Next] button.



8 Proceed with the installation as directed by the on-screen messages.

→ When installation ends, the Installer panel reappears.

9 Click the [Exit] button and restart your computer.

Installing Photoshop 5.0 LE

- You are required to enter the serial number during Photoshop 5.0 LE installation. The serial number is as follows:

SDM501B4164785-650

- 1 Load the Adobe Photoshop 5.0 LE CD-ROM into the CD-ROM drive.**
- 2 Double-click [My Computer] on the desktop to open.**
 - Windows XP users should click the [Start] button and then [My Computer].
- 3 Double-click [Photosle] CD-ROM ► [English] folder ► [Photosle] folder.**
- 4 Double-click the [Setup.exe] icon.**
- 5 Proceed with the installation as directed by the on-screen messages.**
 - For more information on the installation procedure, refer to the [Install] file in the [English] folder on the Photoshop 5.0 LE CD-ROM.

Complete the Installation of the TWAIN and WIA Drivers

- ❶ ● Before you connect the camera to your computer, you must install the TWAIN Driver or WIA Driver from the EOS DIGITAL SOLUTION DISK on your computer.
- Set the camera's Auto power off function to [Off] before you start installing the driver.
- You must not set the camera's main switch to <OFF> until installation ends.
- For the limitations of the WIA Driver, please click the [Start] button and select [Programs] ([All Programs] on Windows XP) ► [Canon Utilities] ► [EOS D60 WIA Driver] ► [WIA Driver Readme].

For Windows 98 SE Users:

1 Connect the camera to your computer correctly. (→2-2)

2 Set the camera's main switch to <ON>.

→ The [Creating driver information database] dialog box appears, followed shortly by the [Insert Disk] dialog box.

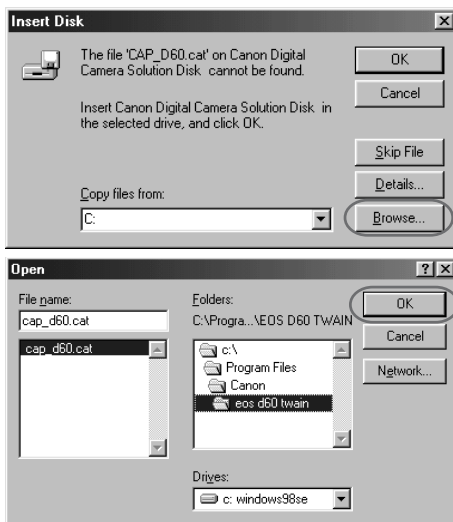
3 Click the [OK] button without loading the EOS DIGITAL SOLUTION DISK.



→ The [Insert Disk] dialog box (details window) appears.

4 Select the drive browse destination.

- Click the [Browse...] button, open the [Program Files] folder on the drive where you installed the software and select [Canon] folder ► [eos d60 twain] folder ► [cap_d60.cat]. Then click the [OK] button.



5 Click the [OK] button.

- ➔ Driver installation is completed.
- This installation is only performed the first time you connect the camera to your computer after installing the EOS DIGITAL SOLUTION DISK.
- When installation is completed, the [EOS D60 event] dialog box appears. Here, click the [Cancel] button and close the displayed event dialog box.
- When the message appears prompting you to restart your computer, restart your computer as directed by the message.

For Windows 2000, Windows Me and Windows XP Users:

1 Connect the camera to your computer correctly (→2-2).

2 Set the camera's main switch to <ON>.

- ➔ The [Found new hardware] dialog box appears and driver installation is completed.
 - ➔ If you are using Windows Me, driver installation is completed without the dialog box being displayed.
 - This automatic installation is only performed the first time you connect the camera to your computer after installing the EOS DIGITAL SOLUTION DISK.
 - When installation ends, one of the event dialog boxes listed below appears, depending on which version of Windows you are using. Click the [Cancel] button to close the event dialog box. If you are using Windows XP, close both the [EOS D60] dialog box and the [Scanner and Camera wizard] dialog box.
- Windows 2000: The [Event on Device: EOS D60] dialog box appears.
- Windows Me: The [Scanner and Camera Wizard] dialog box appears.
- Windows XP: The [EOS D60] and [Scanner and Camera wizard] dialog boxes are displayed overlapping.
- When the message appears prompting you to restart your computer, restart your computer as directed by the message.

When you have problems with driver installation

If you have problems with driver installation, check the items listed below. If the [Add New Hardware Wizard] ([Found New Hardware Wizard] in Windows 2000) dialog box appears while you are checking these items, click the [Cancel] button and disconnect the camera from your computer. Then re-install the driver software.

(1) Does your computer comply with these requirements?

- The system has a built-in USB port and it comes with Windows 98 SE, Windows Me, Windows 2000 or Windows XP preinstalled. (The USB interface is not supported for systems not complying with the above conditions.)

(2) Is the camera connected correctly?

- See “Connecting the Camera to Your Computer” (→2-2) for more information.

(3) Are the camera and computer set up correctly for communication?

- Is the camera's main switch set to <ON>?
- Even when the camera's main switch is set to <ON>, operation of the Auto power off function will automatically switch the camera off. To prevent this, set the Auto power off to [Off]. (Refer to “List of Menu Functions” in the EOS D60 Instructions.)

(4) Is there sufficient charge left in the camera battery?

- When you connect your camera to a computer, you should use the DC Coupler Kit so that you can continue to use your camera regardless of battery level.

If you have checked that none of the above problems apply and you still have problems with the driver installation, refer to “Uninstalling the Driver” (→9-7) and perform the driver installation procedure once more from the beginning.

Please Register Your Camera!

We recommend you take a moment to register your camera, in order to receive further product information.

To proceed to the online User Registration page, simply click the [User Registration] button from the [EOS DIGITAL SOLUTION DISK].

If there is no response when you click the [User Registration] button, please double-click on the file “/SOFTWARE/INSTDATA/ENGLISH/REGIST.HTM” from Windows Explorer.



Getting Ready to Work with Images

This chapter explains how to connect the camera to your computer, how to specify the settings for starting software automatically and how to use a card reader (third-party product).

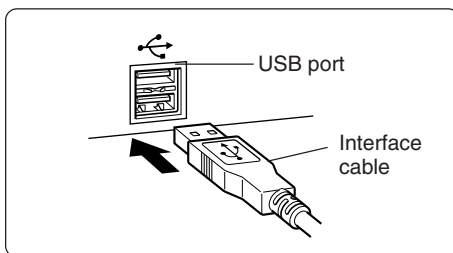
Connecting the Camera to Your Computer

Connect the EOS D60 to your computer with the interface cable so that they can communicate. You can connect the camera while your computer is running. You can also set up your software so that ZoomBrowser EX or a TWAIN Driver-compatible application such as Photoshop 5.0 LE is started when you connect the camera to your computer.

- ❶ Before connecting the camera to the computer, Windows XP users must select the program to be started automatically (Photoshop 5.0 LE, ZoomBrowser EX or the Scanner and Camera wizard). See “To Start Software Automatically (Windows XP)” (→2-6). The connection will only function correctly if the automatic start setting is specified.

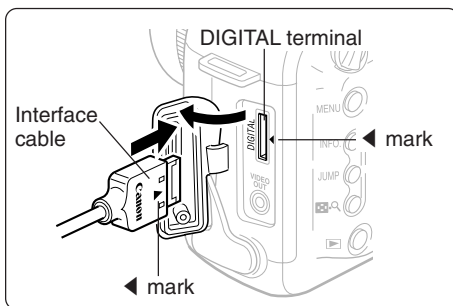
1 Plug the interface cable into the computer.

- Plug the cable into the USB port on the computer.
- The location of the port differs depending on your computer. Refer to the User's Manual for your computer for details.



2 Plug the interface cable into your camera.

- Open the cover and plug in the interface cable so that the ◀ mark on the plug is aligned with the ◀ beside the DIGITAL terminal.

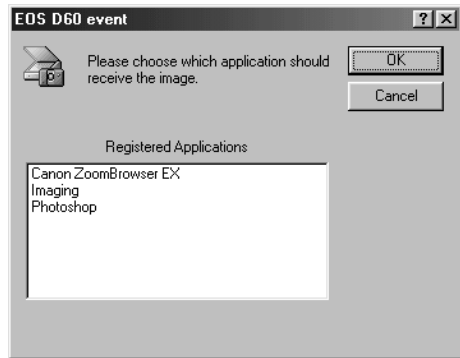


3 Set the camera's main switch to <ON>.

- ➔ The [EOS D60 event] dialog box appears.
- ➔ If you are using Windows 2000, the [Event on Device: EOS D60] dialog box appears.
- ➔ If you are using Windows Me or Windows XP (and you selected [Scanner and Camera Wizard] in the automatic start settings), the [Scanner and Camera Wizard] dialog box appears. Click the [Cancel] button to close the [Scanner and Camera Wizard] dialog box.
- ➔ When automatic software starting is enabled (→2-5, 2-6), the specified software starts up.

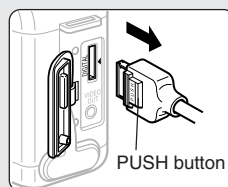
4 Select software.

- Select the software to be used and click the [OK] button.
- ➔ The selected software starts up.
- To cancel automatic software starting, click the [Cancel] button.





- Use only the interface cable bundled with the camera to connect the camera to your computer.
- Push the plug firmly all the way into the socket. Loose connections can cause faults or malfunctions.
- Connect the camera directly to a USB port on the computer; not through a hub. The connection may not operate correctly through a hub.
- The connection may not operate correctly if you are using other USB devices, excluding USB mouse or keyboards, at the same time. If this occurs, disconnect the other devices from the computer and try reconnecting the camera.
- Do not connect more than one camera to the same computer. The connections may not operate correctly.
- While the camera and your computer are communicating, the camera's LCD panel may blink and, if you are using the LCD monitor, the image on the monitor may flicker. This is not malfunction.
- When you unplug the interface cable from the camera's DIGITAL terminal, press the PUSH button on the plug as you pull the plug out.
- If you leave the camera unused for approximately 5 minutes while it is connected to your computer, a confirmation message appears on the computer screen asking whether you wish to continue communicating with the camera. If you do not do anything, the connection to the camera is terminated after approximately 1 minute. (If you are using a household power source, no message is displayed and the connection is not terminated.) To re-establish the connection, press the shutter button down halfway or set the camera's main switch to <OFF> and then back to <ON>. Refer to the EOS D60 Instructions provided with the camera for details.
- Do not put your computer to sleep while it is connected to the camera. If you do put your computer to sleep while it is connected to the camera, never disconnect the interface cable while your computer is still in sleep mode. Always wake your computer up before disconnecting the camera. On some types of computer, disconnecting the interface cable while your computer is in sleep mode could prevent the computer from waking up correctly. Refer to the computer User's Manual for more information on Sleep mode.

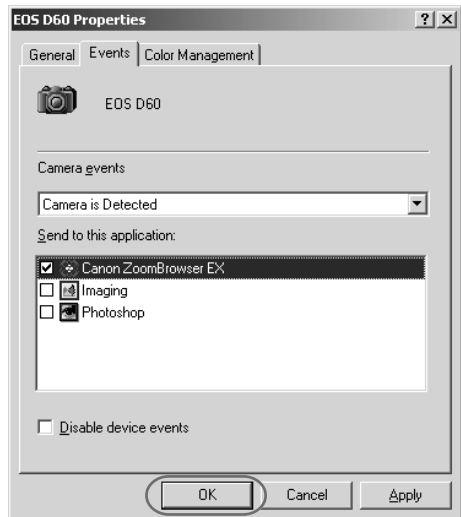


When you connect your camera to a computer, you should use the DC Coupler Kit so that you can continue to use your camera regardless of battery level.


To Start Software Automatically (Windows 98 SE/Windows 2000)

Use the procedure below when you want software to start automatically without the event dialog box being displayed.

- 1 With the camera connected to your computer, click the [Start] button and select [Settings] ► [Control Panel].**
- 2 Double-click the [Scanners and Cameras] icon to open.**
→ The [Scanners and Cameras Properties] dialog box appears.
- 3 Select the [EOS D60] icon and click the [Properties] button.**
→ The [EOS D60 Properties] dialog box appears.
- 4 Select the [Events] tab.**
→ The [Events] tab sheet appears.
- 5 Uncheck all the checkboxes other than the software you want to start automatically and then click the [OK] button.**
→ The next time you connect the camera to your computer, the selected software will start up automatically.
● Clicking the [Disable device events] checkbox, disables auto start.



To Start Software Automatically (Windows XP)

 Software cannot be started automatically in Windows Me.

Use the procedure below to select a software application for automatic start. In Windows XP, you must specify this setting after you install the software.

1 With the camera connected to your computer, click the [Start] button and then click [Control Panel] ► [Printers and Other Hardware] ► the [Scanners and Cameras] icon to open the [Scanners and Cameras] dialog box.

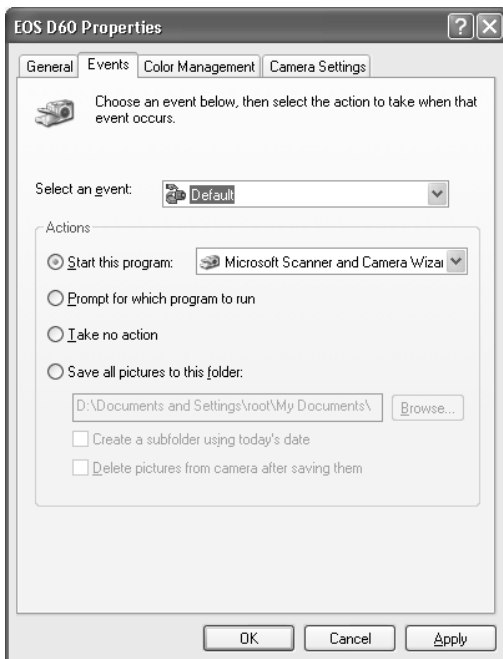
2 Select the [EOS D60] icon and click [View device properties] in [Imaging task].

→ The [EOS D60 Properties] dialog box appears.

3 Select the [Events] tab.

→ The [Events] tab sheet appears.

4 Specify the software to be started automatically.



- To automatically start a software application (ZoomBrowser EX or Photoshop 5.0 LE)
 - 1 Select [Default] in the [Select an event] list box and then select the [Take no action] radio button.
 - 2 Select [EOS D60 Connected] in the [Select an event] list box and then select the [Start this program] radio button. Then select [Canon ZoomBrowser EX] or [Photoshop].
- To automatically start the Scanners and Cameras wizard.
 - 1 Select [Default] in the [Select an event] list box. Then select the [Start this program] radio button and select [Microsoft Scanner and Camera Wizard] in the list box.
 - 2 Select [EOS D60 Connected] in the [Select an event] list box and then select the [Take no action] radio button.

5 Click the [OK] button.

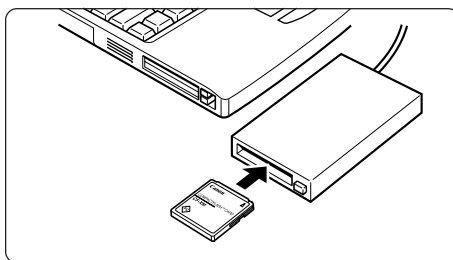
- ➔ As of the next time you connect the camera to your computer, the selected software will start up automatically.

Inserting a CF Card into Your Card Reader

To download images from a CF card directly onto your computer, remove the CF card from your camera and load it into a card reader (third-party product) connected to your computer.

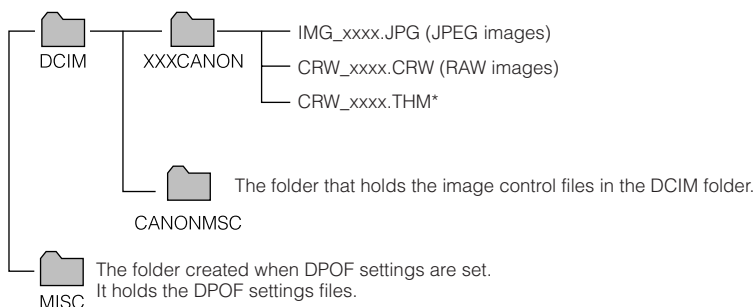
1 Remove the CF card from the camera.

2 Load the card into the card reader.



CF Card Folder Structure and File Names

The images on a CF card are placed in sub-folders named [XXXXCANON], where the “XXX” represents a number from 100 to 998, within the [DCIM] folder.



- The “xxxx” in file names represent four-digit numbers.
- All folders except the “XXXXCANON” folders contain image control files. Do not open or delete them.

* Files with the THM extension are the thumbnail image files for the camera's index replay mode.



For information on connecting the card reader to your computer, refer to the User's Manual provided with the card reader.



Working with Images in the TWAIN Driver

This chapter explains how to use the TWAIN Driver to display and save images stored on a CF card loaded in the camera and describes how to process and image-process RAW images.

The TWAIN Driver is the driver software used for Windows 98 SE and Windows 2000.

Starting the TWAIN Driver

The TWAIN Driver is the driver software used for Windows 98 SE and Windows 2000 and is started from a TWAIN Driver-compatible application (such as Adobe Photoshop 5.0 LE). The descriptions given here use the bundled Photoshop 5.0 LE software as an example. If you are using TWAIN Driver-compatible application other than Photoshop 5.0 LE, refer to the User's Manuals provided with your software for information on setting up and using a TWAIN devices.

1 Start Photoshop 5.0 LE.

- If the event dialog box is displayed when you connect the camera to your computer, select [Photoshop] and click the [OK] button.
- When you connect the camera to your computer and Photoshop 5.0 LE does not start up (as when ZoomBrowser EX starts up when you connect the camera to your computer), click the [Start] button and select [Programs] ([All Programs] on Windows XP) ► [Adobe] ► [Photoshop 5.0 Limited Edition] ► [Adobe Photoshop 5.0 Limited Edition].
- ➔ Photoshop 5.0 LE starts up.
- You can also set up your software so that Photoshop 5.0 LE starts automatically without the event dialog box being displayed (→2-5, 2-6).

2 Select [File] menu ► [Import] ► [Select TWAIN_32 Source...].

- ➔ The [Select Source] dialog box appears.

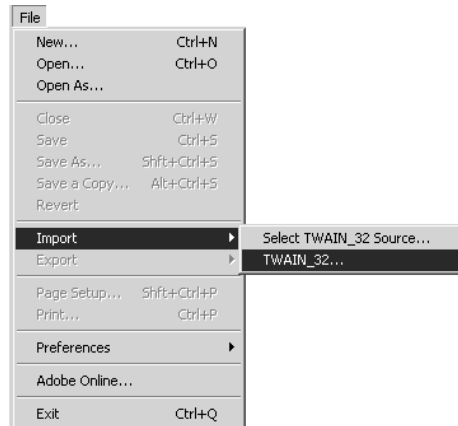


3 Select [Canon EOS D60 USB] and click the [Select] button.



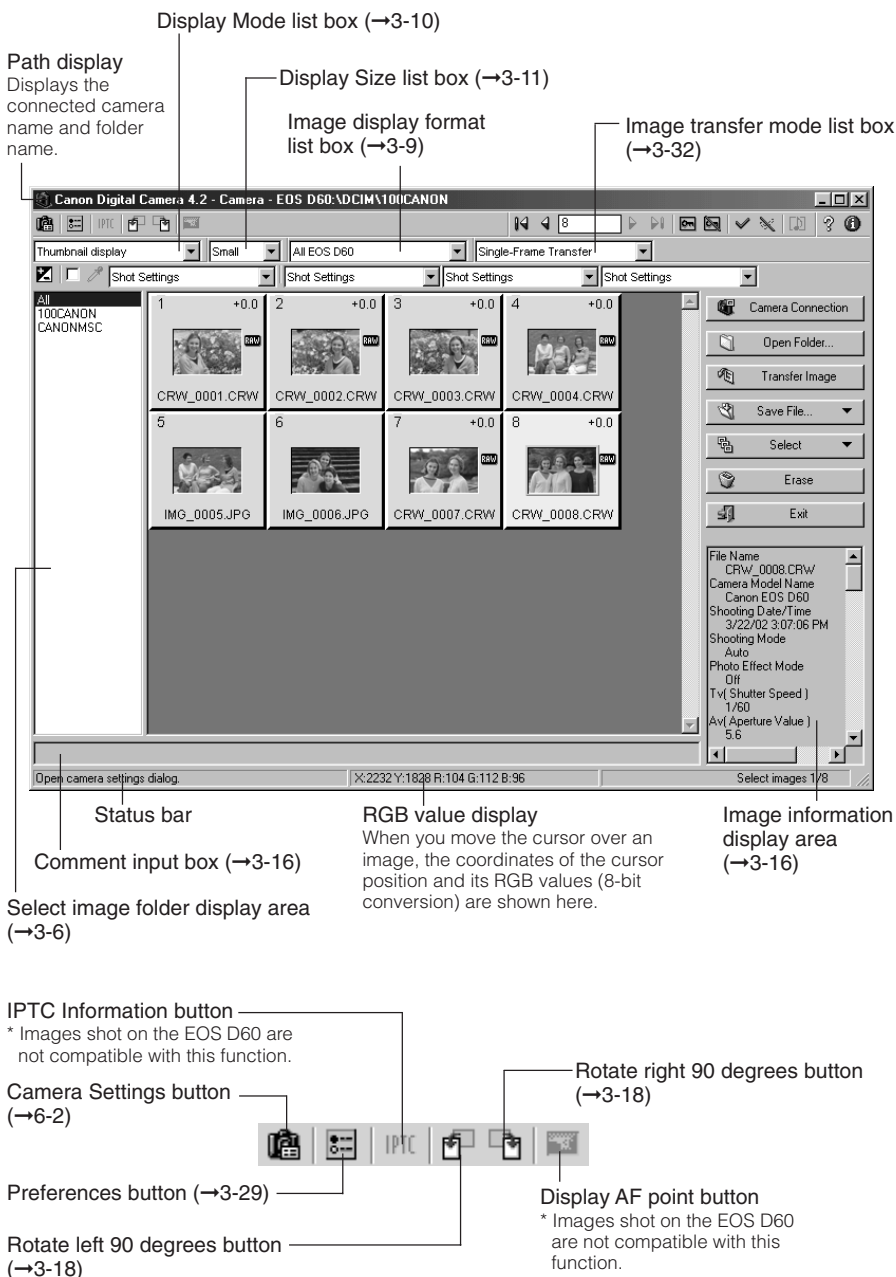
4 Select [File] menu ► [Import] ► [TWAIN_32...].

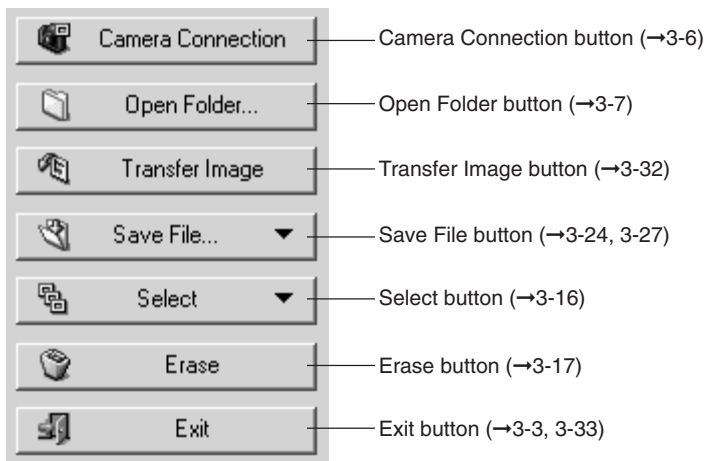
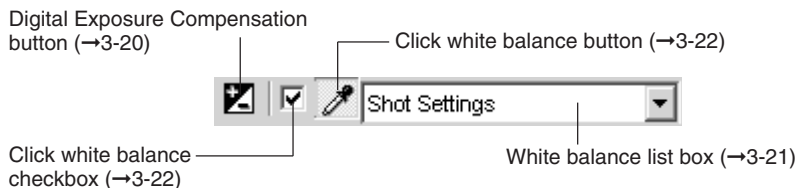
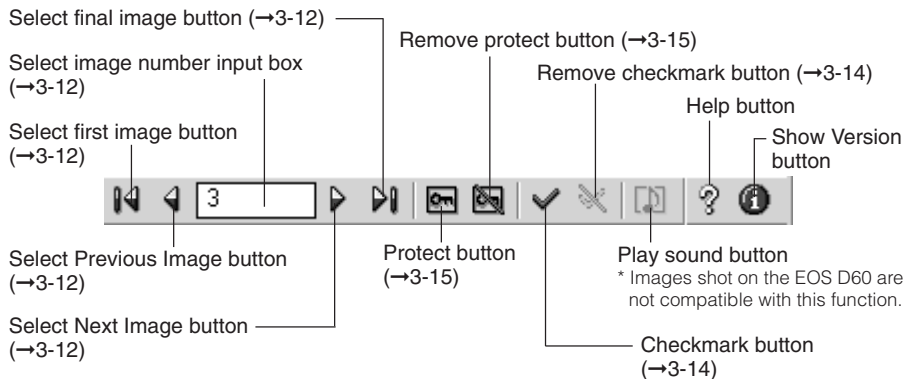
- ➔ The TWAIN Driver starts up.
- ➔ When you start the TWAIN Driver, the main window opens. In the main window, you can display and process the images saved on the CF card in the camera.
- To close the TWAIN Driver, click the [Exit] button in the main window.



- Steps 2 and 3 are not required for every operation. Only perform these steps the first time you start the driver software following installation, or when you change the setting to another TWAIN Driver.
- To modify images from Photoshop 5.0 LE when you are using the WIA Driver (Windows Me or Windows XP), use the WIA TWAIN to modify the images (see “Downloading with the WIA TWAIN” (→4-5)).

TWAIN Driver main window





Displaying Images

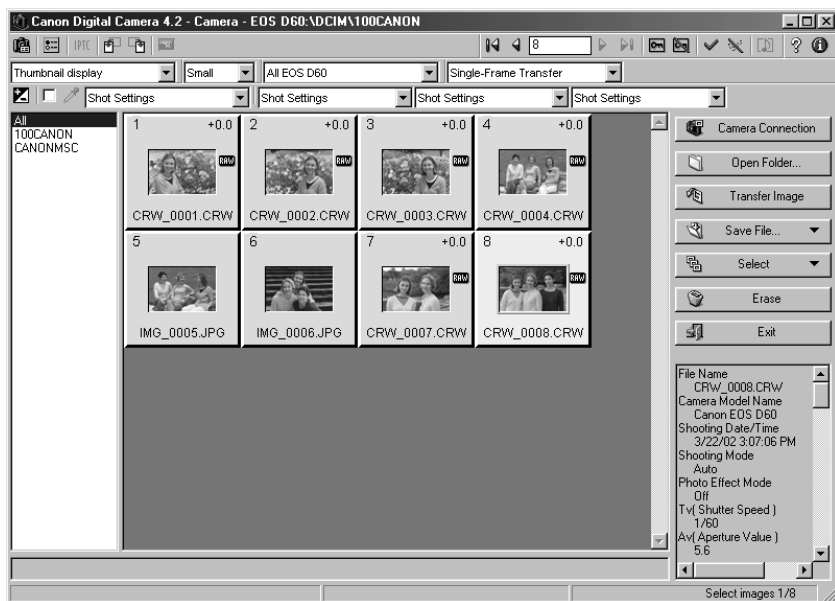
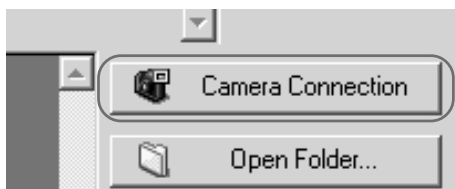
This section describes how to display images stored on a CF card.

You can display images via the interface cable while the CF card is still in the camera, or by loading the CF card into a third party card reader.

Displaying Images by Connecting the Camera to Your Computer

1 Click the [Camera Connection] button.

- ➔ After a short delay, the images appear.
- The highest numbered image in the highest numbered folder is automatically selected and displayed.



2 Select a folder that contains images.

- When you click a folder name in the select image folder display area, the images in that folder are displayed. Click [All] to display all the images on the CF card.



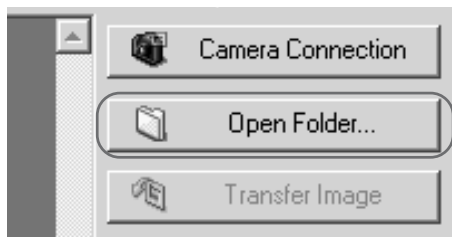
- Because RAW images are processed before being displayed, there is a short delay before the images appear.
- You can specify which image is selected first when the [Camera Connection] button is clicked. (→3-29)

Displaying Images by Connecting a Card Reader

Remove the CF card from the camera and load it into the card reader. (→2-8)

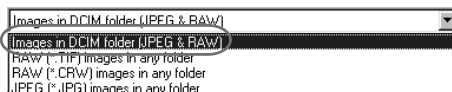
1 Click the [Open Folder...] button.

- The [Select Image Folder] dialog box appears.



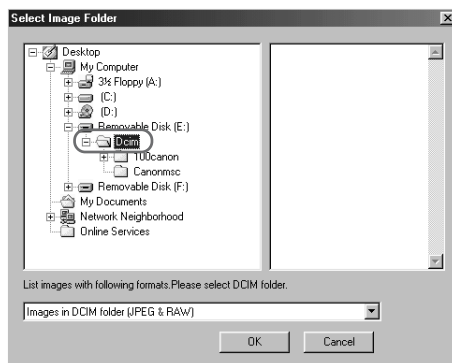
2 Select the image format.

- Select [Images in DCIM folder (JPEG & RAW)].



3 Select a folder.

- Open the drive for the CF card containing images shot on the EOS D60 and select the [DCIM (or Dcim)] folder.



4 Click the [OK] button.

- The images shot on the EOS D60 in the selected folder are displayed.

Image Display Formats

[Images in DCIM folder (JPEG&RAW)]

Use this option to display the JPEG and RAW images saved in the DCIM folder.

In step 3, you can also select any folder in the DCIM folder and display only the images saved in that folder.

If you display images in this format, do not rename any of the folders on the CF card.

Renaming folders such as the DCIM folder or 100CANON folder may make it impossible to display the images in those folders.

[RAW (*.TIF) images in any folder]

Use this option to display only the TIFF-format RAW images (EOS-1D etc.) saved in the selected folder. Select this format in step 2, then select a folder containing TIFF-format RAW images.

[RAW (*.CRW) images in any folder]

Use this option to display only the CRW-format RAW images (EOS D60 and D30 etc.) saved in the selected folder. Select this format in step 2, then select a folder containing CRW-format RAW images.

[JPEG (*.JPG) images in any folder]

Use this option to display only the JPEG images saved in the selected folder. Select this format in step 2, then select a folder containing JPEG images.

Depending on the type of device that originally created the image, you may not be able to display some JPEG images.



To save the images on a CF card to your computer or to another media, you must select and then save the displayed images (→3-24) or copy the DCIM folder to your computer or to the target media.



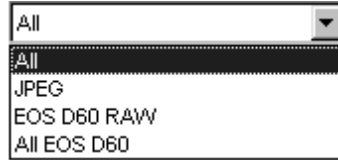
- Because RAW images are processed before being displayed, there is a short delay before the images appear.
- To display the images saved on your computer's hard disk, use the procedure described in "Displaying Images by Connecting a Card Reader" (→3-7).

Selecting the Image Display Format

The format options for image display are [All], [JPEG], [EOS D60 RAW] and [All EOS D60]. Specifying one of these options allows you to display only images in the selected format.

Click the [Image display format] list box and select the image display format.

➔ Only images in the selected display format are displayed.



[All]

All the images saved in the selected folder are displayed.

[JPEG]

Only JPEG images are displayed.

[EOS D60 RAW]

Only EOS D60 RAW images are displayed.

[All EOS D60]

Only images shot on the EOS D60 in the RAW+JPEG images are displayed.



You may be unable to correctly display images that were shot on cameras other than the EOS D60 or that were modified or renamed on a computer after being captured.



If the selected folder or the CF card in the connected camera contains any images (including RAW or JPEG images) that were shot on a Canon camera other than an EOS D60, the image display format for those images is displayed in the list box.

Selecting the Display Mode and Display Size

The available display modes are [Thumbnail display], [Preview] and [JPEG Preview]. You can select [Large], [Middle], or [Small] as the display size for each display mode.

Selecting the Display Mode

Click the [Display Mode] list box and select the mode.

- ➔ The images are displayed in the selected display mode.



[Thumbnail display]

This shows multiple images arranged in sequence. The information shown below is also displayed for the images.



Transferred image mark (→3-33)
This mark is attached to images that have been transferred to the TWAIN Driver-compatible application.

Display number
Numbers are assigned sequentially to the displayed images starting with the first image.

Digital exposure compensation (→3-20)

Protect mark (→3-15)
This mark is attached to protected images.

Recording format
The [RAW] symbol is displayed for RAW images. No symbol is shown for JPEG images.

Checkmark (→3-14)

File name or shooting date/time
The item selected in [Image Lower Display Item] list box in the [Preferences] dialog box (→3-29) is displayed.

File name or shooting date/time
The item selected in [Image Lower Display Item] list box in the [Preferences] dialog box (→3-29) is displayed.

File name or shooting date/time
The item selected in [Image Lower Display Item] list box in the [Preferences] dialog box (→3-29) is displayed.



When you start the TWAIN Driver, images are always shown in the [Thumbnail display] mode.

[Preview]

The selected image is displayed as a single frame.



[JPEG Preview]

JPEG image is displayed.
The table below shows the types of JPEG images displayed for the different image recording formats.

Recording Format	Displayed JPEG Image
JPEG image	JPEG image
RAW image	JPEG image (Middle/Fine)



When a RAW image is shot on the EOS D60, a JPEG (Middle/Fine) image is recorded at the same time. When you select [JPEG Preview] for an EOS D60 RAW image, the JPEG (Middle/Fine) image included in the RAW image is displayed.

Selecting the Display Size

Click the [Display Size] list box and select the display size.

➔ The image is displayed in the selected display size.



In the [Preview] mode, the available image sizes are [Large] (100%), [Middle] (50%) and [Small] (25%).

Selecting Images

Selecting Images with the Mouse

Position the mouse cursor over the image and click the left mouse button.

- To select multiple images at random, hold down the <Ctrl> key and select the images.
- To select consecutive images, select the first image and then hold down the <Shift> key and select the last image.
- ➔ The frame around the selected image changes color.



Selecting Images from the Control Panel

You can also select images in the image selection control panel.



: **[Select first image] button**

Selects the first thumbnail image displayed.



: **[Select Previous Image] button**

Selects the image before the currently selected image.



: **[Select image number] input box**

Selects the image with the specified number. You can enter a number between 1 and 9999. Enter the number and press the <Enter> key.



: **[Select Next Image] button**

Selects the next image.



: **[Select final image] button**

Selects the last thumbnail image displayed.



- If you position the mouse cursor over an image and double-click, the image is transferred to Photoshop 5.0 LE (TWAIN Driver-compatible application).
- To select an image using the keyboard, use the arrow keys (↑ ← → ↓) to move to the image and then press the spacebar.

Working with Selected Images

Operations that Can Be Used with Images

The table below lists the operations available with the TWAIN Driver. When a JPEG image is selected, the unavailable operations are shown grayed out.

Image recording formats and image processing options

Operations	RAW	JPEG	Description
Checkmark	✓	✓	Used for selecting specific images.
Protect	✓	✓	Protects the image so it cannot be erased.
Erase	✓	✓	Erases unprotected images.
Comment input*	✓	✓	Attaches a brief comment to each frame.
Transfer image	✓	✓	Transfers images to applications such as Photoshop 5.0 LE.
Save file	✓	✓	Saves an image to your computer, etc.
Rotate image*	✓	✓	Rotates the image by 90 degree unit.
Digital exposure compensation	✓	—	Adjusts the brightness.
White balance	✓	—	Adjusts the white balance.
Click white balance	✓	—	Automatically adjusts the white balance.
Contrast	✓	—	Adjusts the contrast.
Color saturation	✓	—	Adjusts the color density.
Color tone	✓	—	Adjusts the color tone.

- Operations marked with an asterisk (*) cannot be used with images saved on a CF card in the camera and are shown grayed out in the control panel. Save such images to your computer or use the operation via a card reader.

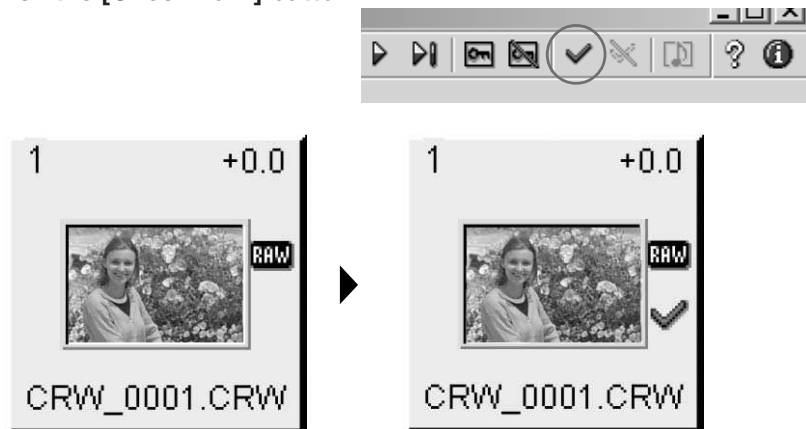


The sharpness for RAW images can be specified in the [Preferences] dialog box (→3-29).

Attaching Checkmarks to Selected Images

You can use this function to attach checkmarks to your images for quick and easy image selection. Note that attaching a checkmark to an image does not protect the image.

Click the [Checkmark] button.



→ When you attach a checkmark to an image, the [✓] appears.

- Clicking the [Remove checkmark] button removes the [✓] and cancels the checkmark setting.



The checkmark is removed when you quit the TWAIN Driver.

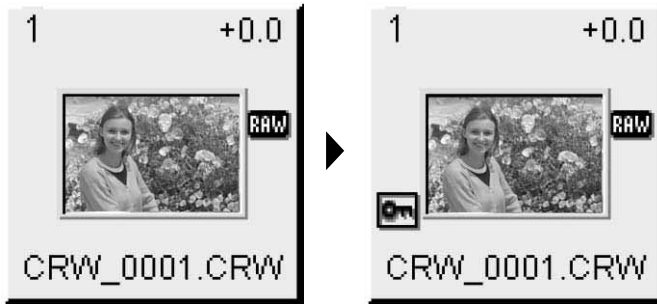




A range of operations is also available by selecting the image, pressing the right mouse button and selecting an option from the menu that appears.

Protecting Images


You can protect important images to prevent them from being accidentally erased.

Click the [Protect] button.



- ➔ The image is protected, and the [] is displayed.
- Clicking the [Remove protect] button clears the [] and removes the protection.



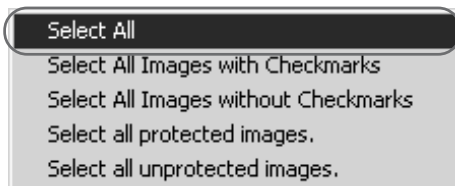
- When multiple images are selected, all the selected images are protected.
- The [] is automatically displayed for images that were protected on the camera.
- Protection only prevents images from being erased. Other types of image processing can still be specified for protected images.
- A range of operations is also available by selecting the image, pressing the right mouse button and selecting an option from the menu that appears.

Selecting Images by Condition

This feature allows you to select multiple images for which a condition has been set (e.g. checkmarked or protected images) in a single operation. You can also select all the displayed images.

Click the [Select] button and select the condition from the menu that appears.

- ➔ Only images that meet the condition are selected.



Checking the Image Information

Shooting information is recorded when images are taken. You can check the shooting information by selecting the image.

Also, you can copy shooting information to paste it into another application, and you can add a comment.

Image information display area

- Displays information such as the file name, camera model name and shooting data. The number of items displayed differs depending on the camera settings.
- Use the scroll buttons to display parts of the information that are not visible.
- When you select multiple images, the information from the image selected last is displayed.
- You can copy the information as text data and paste it into another application.



Comment input box

You can use this box to type in a comment up to 120 characters long. Type in your comment and press the <Enter> key.

Erasing Images

Use the procedure below to erase unwanted images from a CF card or your computer.

1 Click the [Erase] button.

→ The [Canon Digital Camera] dialog box appears.



2 Click the [OK] button.

→ The image is erased.



- Erased images cannot be restored. Check carefully before erasing images.
- Protect important images to prevent them from being accidentally erased.
- If you click the [Erase] button when multiple images are selected, all the selected images are erased. Take particular care when you have just finished a task involving the selection of multiple images.



A range of operations is also available by selecting the image, pressing the right mouse button and selecting an option from the menu that appears.

Rotating Images

Use the procedure below to rotate a selected image by 90 degree unit left or right.

Rotate the image.

- To rotate the image right (clockwise), click the [Rotate right 90 degrees] button.
- To rotate the image left (counterclockwise), click the [Rotate left 90 degrees] button.
- ➔ The image rotates 90 degrees in the selected direction.



- When multiple images are selected, all the selected images are rotated.
- A range of operations is also available by selecting the image, pressing the right mouse button and selecting an option from the menu that appears.

Processing RAW Images

RAW images are processed so that they are optimized for their intended purpose. In addition to the digital exposure compensation and white balance settings, the TWAIN Driver allows you to specify the click white balance, contrast, color density and color tone.

This image processing does not involve working with the original RAW images. It applies virtual parameters to RAW images temporarily downloaded to the computer.

Accordingly, you can redo the processing repeatedly with different parameters.

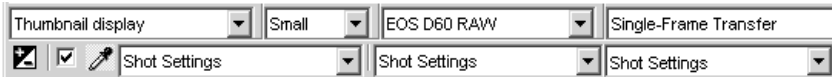
You can also change the modified parameters back to the settings used when the shot was taken.

1 Process the RAW image.

- Set the image display format to [EOS D60 RAW]. (→3-9)
- Select the RAW image to be processed. (→3-12)
- It is recommended that you use the [Preview] mode to check the processed image. (→3-11)

2 Change the parameter settings.

- Change parameter settings. See the pages that follow for information on how to set the parameters.
 - The image is reprocessed using the modified parameters and the result is shown.
- Because the parameters set during shooting and the modified parameters for the original RAW image are updated in realtime.



3 Save or transfer the image in a commonly used format.

- You can save an image as a JPEG or TIFF format by clicking the [Save File...] button and selecting [Convert and save in file] from the menu that appears (→3-24). By selecting [JPEG Extraction...], you can extract and save a JPEG image (Middle/Fine) from an image recorded in the RAW format (→3-27).
- Clicking the [Transfer Image] button transfers the image to Photoshop 5.0 LE. (→3-32) You can specify the number of colors when the image is transferred in the [RAW Image Processing Settings] tab sheet in the [Preferences] dialog box (→3-30).



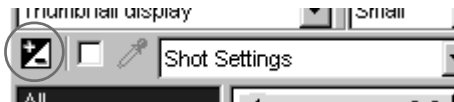
- When multiple images are selected, the specified processing is applied to all the RAW images selected.
- The sharpness for RAW images can be specified in the [Preferences] dialog box (→3-29).

Correcting the Brightness (Digital Exposure Compensation)

You can correct the brightness of an image through the equivalent of ± 2 stops in 0.1-stop increments.

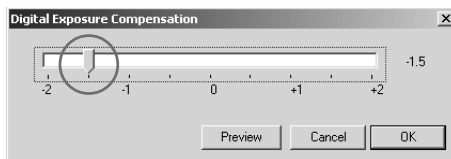
1 Click the [Digital Exposure Compensation] button.

- The [Digital Exposure Compensation] dialog box appears.



2 Correct the image brightness.

- Adjust the image brightness by using the mouse to drag the slider left or right.
- When you click the [Preview] button, the image brightness changes according to the value of the new slider position.



3 Click the [OK] button.

- The corrected value is applied to the image and the [Digital Exposure Compensation] dialog box closes.
- The corrected value is displayed with the corrected image.



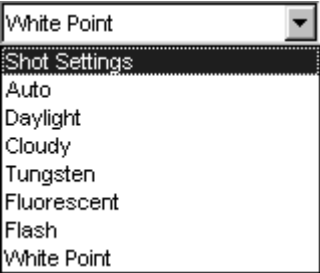
Adjusting the White Balance

You can adjust the white balance in your RAW images.
You can select the white balance from the 8 available settings. You can also make finer adjustments to the white balance using the Click White Balance function, which allows you to adjust the balance by selecting a white area in the image.

Select the White Balance

Select the white balance from the [White balance] list box.

- The table below shows the 8 available white balance settings.
- [White Point] is displayed only when you select an image that has been adjusted using the Click White Balance function.



White Balance	Details	Color temp./K (Kelvin)
Shot Settings	Select this option to apply the white balance setting used when the shot was taken.	—
Auto	The TWAIN Driver automatically adjusts the white balance.	Approx. 3000-7000
Daylight	Select this setting for shots taken outdoors in sunny weather.	Approx. 5200
Cloudy	Select this setting for shots taken outdoors in cloudy weather or in shade, at dusk and for shots of sunsets.	Approx. 6000
Tungsten	Select this setting for shots taken in incandescent white lighting.	Approx. 3200
Fluorescent	Select this setting for shots taken in fluorescent white lighting.	Approx. 4000
Flash	Select this setting for shots taken using a flash.	Approx. 6000
White Point	Displayed when you use Click White Balance. (→3-22)	Approx. 2000-10000

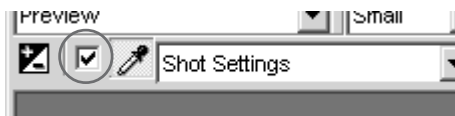
➡The adjusted image appears.

Click White Balance Function

This function allows you to automatically adjust the white balance simply by clicking a point in a white part of the image.

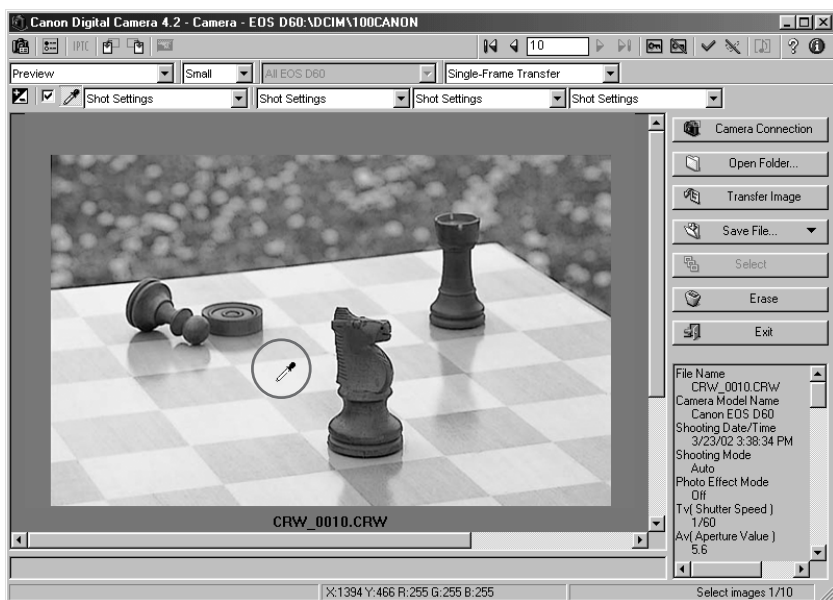
1 Click the [Click white balance] checkbox.

- The [Click white balance] button is now enabled.



2 Select a white area.

- When you move the cursor over the image, it changes to the shape of a filler.
- Click in a white area in the image.



- The white balance is adjusted so that the area clicked appears white and the result is displayed.
- To adjust the white balance using a different location, click the [Click white balance] button again.
 - To end the Click White Balance procedure, click the checkbox again to clear the box and end the procedure.

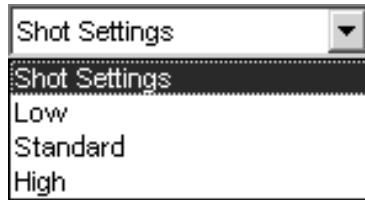
Adjusting the Color in Images

Use the procedures below to adjust the color parameters (contrast, color density and color tone) in images. You can adjust the color by selecting settings from the respective list boxes.

Adjusting the Contrast

Select the desired contrast from the [Contrast] list box.

➔ The resulting image is displayed.



Adjusting the Color Density

Select the desired color density from the [Saturation] list box.

➔ The resulting image is displayed.



Adjusting the Color Tone

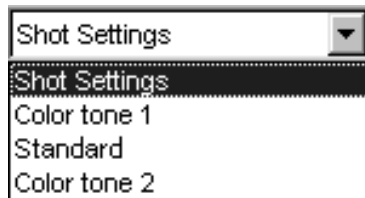
Select the desired color tone from the [Color tone] list box.

➔ The resulting image is displayed.

- [Color tone 1] adjusts the colors so that the red tones are stronger.

[Standard] applies the standard color matching adjustment.

[Color tone 2] adjusts the colors so that the yellow tones are stronger.



Saving Images

This section explains how to use the interface cable to save images stored on a CF card in your camera onto your computer. This section also describes a simple method for creating JPEG images from RAW images.

Saving Images from the Camera to Your Computer

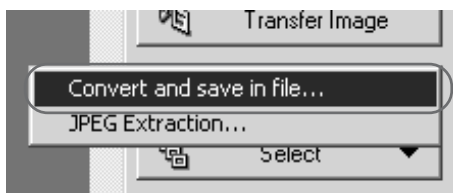
You should save the images you have shot on your computer.

1 Select the images.

- To save the images to separate folders, click the folder name in the select image folder display area and then select the images to be saved.
- To gather images in different folders together and save them in the same folder, click [All] in the select image folder display area and then select the images to be saved.
- Only the images with colored frames are saved.
- See “Selecting Images” (→3-12) for information on how to select images.

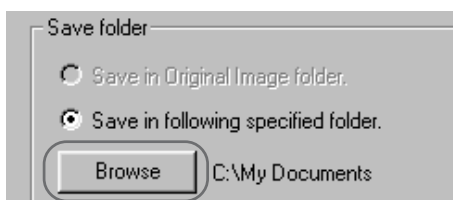
2 Click the [Save File...] button and select [Convert and save in file...] from the menu that appears.

- The [Save File] dialog box appears.



3 Click the [Browse] button.

- The [Save Folder Specification] dialog box appears.



4 Select a folder.

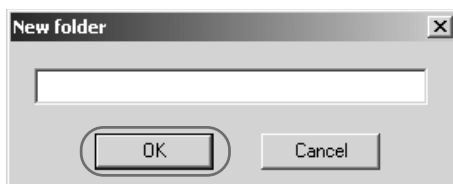
- Select the folder that the images will be saved in from the folder display area and click the [OK] button.
- The image files in the selected folder are displayed in the file display area.

Save Folder Specification dialog box



New folder button

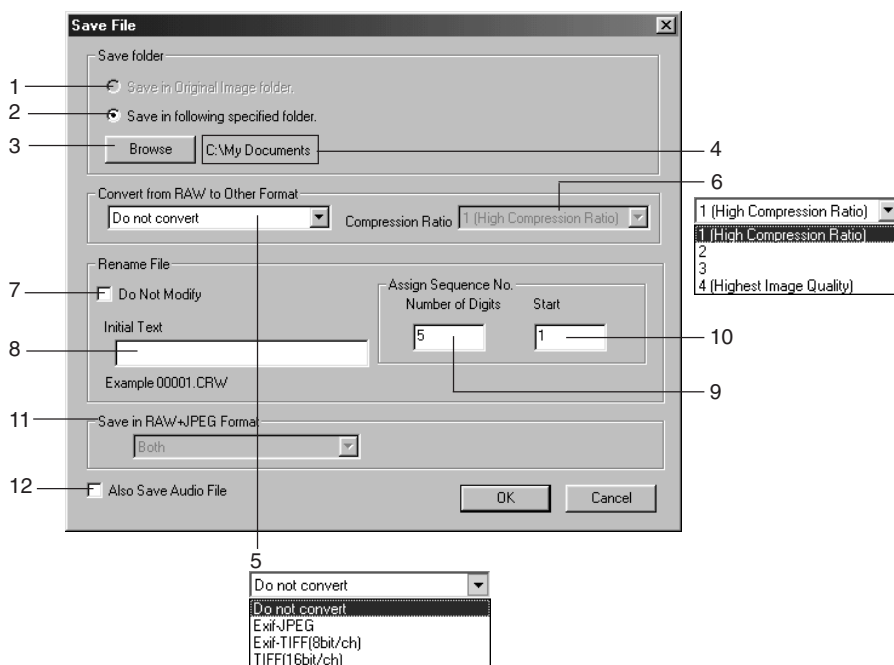
- ➔ Clicking the [New folder...] button opens the [New folder] dialog box.
- You can create a new folder inside the selected folder by entering the folder name and clicking the [OK] button.



5 Set the save options and click the [OK] button.

- ➔ The images are saved in the selected folder.

Save File dialog box



- 1 The converted image is saved in the same folder as the displayed image. You cannot select this option for images that are saved on a CF card in the camera. This option is only available for images saved on your computer or on a CF card in a card reader.
- 2 Use this button when you want to specify the folder in which the image will be saved.
- 3 When the [Save in following specified folder.] radio button is selected, this button specifies the folder in which the image will be saved.
- 4 Shows the folder in which the image will be saved.

- 5 Select this option when the images to be saved include RAW images. Select [Do not convert], [Exif-JPEG], [Exif-TIFF(8bit/ch)] or [TIFF(16bit/ch)]. The file extensions used for the saved files are shown below.

Conversion Format	File Extension
Do not convert	_.CRW
Exif-JPEG	_.RJ.JPG
Exif-TIFF(8bit/ch)	_.RT8.TIF
TIFF(16bit/ch)	_.RT16.TIF

- The TWAIN Driver cannot display images converted to TIFF format (Exif-TIFF(8bit/ch) or TIFF(16bit/ch)) and saved.
 - To use linear processing, specify linear processing in the [Preferences] dialog box (→3-30) and select [TIFF(16bit/ch)] when you save the image. Even when linear processing is specified, linear processing cannot be applied to images saved in [Exif-TIFF(8bit/ch)] format.
- 6 You can specify the [Compression Ratio] (image quality) when you select [Exif-JPEG] from the [Convert from RAW to Other Format] list box. You can select from 4 compression ratios-[4 (Highest Image Quality)] to [1 (High Compression Ratio)]. The higher the value, the higher the quality of the JPEG image.
- 7 This checkbox is enabled when you select [Do not convert] in the [Convert from RAW to Other Format] list box. Click this checkbox when you want to save the RAW image without changing the name.
- 8 This is text inserted before the file number for sorting. You can enter up to 12 characters. When you enter text, an example of the file name appears in the [Example] field below the text box.
- 9 You can specify up to 9 digits in the file number.
- 10 Specifies the first file number.
- 11 This function is not compatible with images shot on the EOS D60.
- 12 This function is not compatible with images shot on the EOS D60.



A range of operations is also available by selecting the image, pressing the right mouse button and selecting an option from the menu that appears.

Extracting JPEG Images from RAW Images

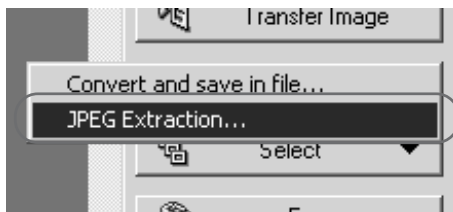
When a RAW image is shot on the EOS D60, a JPEG (Middle/Fine) image is recorded at the same time. You can save the JPEG (Middle/Fine) image included with an EOS D60 RAW image to your computer by extracting the JPEG image from the RAW image.

1 Select the RAW image from which a JPEG image is to be extracted.

- Set the image display format to [EOS D60 RAW] (→3-9) and select the RAW image from which you want to extract a JPEG image. (→3-12)

2 Click the [Save File...] button and select [JPEG Extraction...] from the menu that appears.

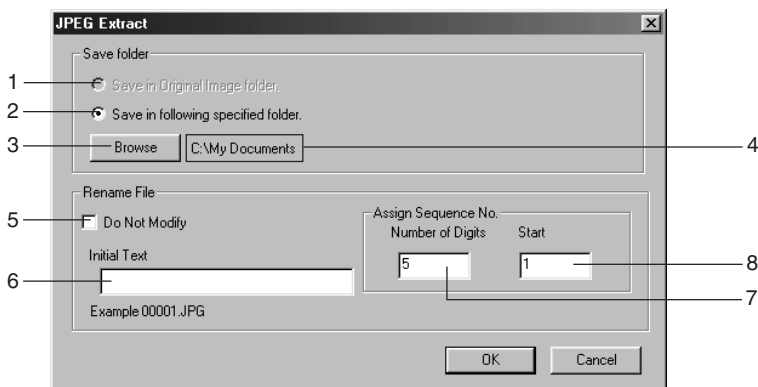
- ➔ The [JPEG Extract] dialog box appears.



3 Specify the desired settings and click the [OK] button.

- ➔ The JPEG image is saved in the selected folder.

JPEG Extract dialog box



- 1 The converted image is saved in the same folder as the displayed image. You cannot select this option for images that are saved on a CF card in the camera. This option is only available for images saved on your computer or on a CF card in a card reader.
- 2 Use this button when you want to specify the folder in which the image will be saved.
- 3 When the [Save in following specified folder.] radio button is selected, this button specifies the folder in which the image will be saved.
- 4 Shows the folder in which the image will be saved.
- 5 Click this checkbox when you want to save the RAW image without changing the name.
- 6 This is text inserted before the file number for sorting. You can enter up to 12 characters. When you enter text, an example of the file name appears in the [Example] field below the text box.
- 7 You can specify up to 9 digits in the file number.
- 8 Specifies the first file number.

Specifying the Preferences

You can use the procedure below to specify the general settings for the TWAIN Driver and the processing method for RAW images.

1 Click the [Preferences] button.

- The [Preferences] dialog box appears.



2 Select the [General Settings] tab or the [RAW Image Processing Settings] tab.

- The selected tab sheet appears.

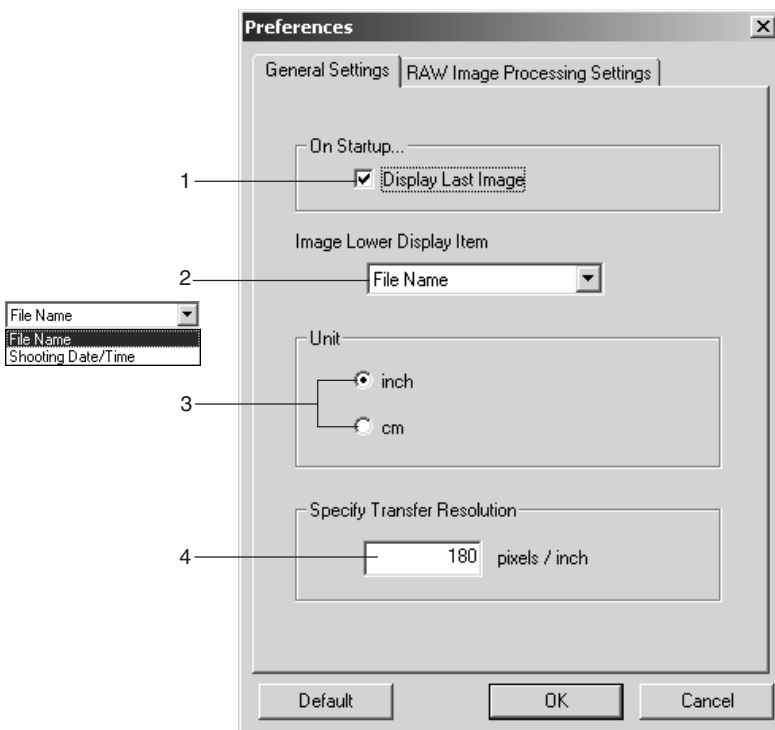
3 Specify the desired settings.

- Select the desired option in each setting.

4 Click the [OK] button.

- The settings are applied and the [Preferences] dialog box closes to end the procedure.

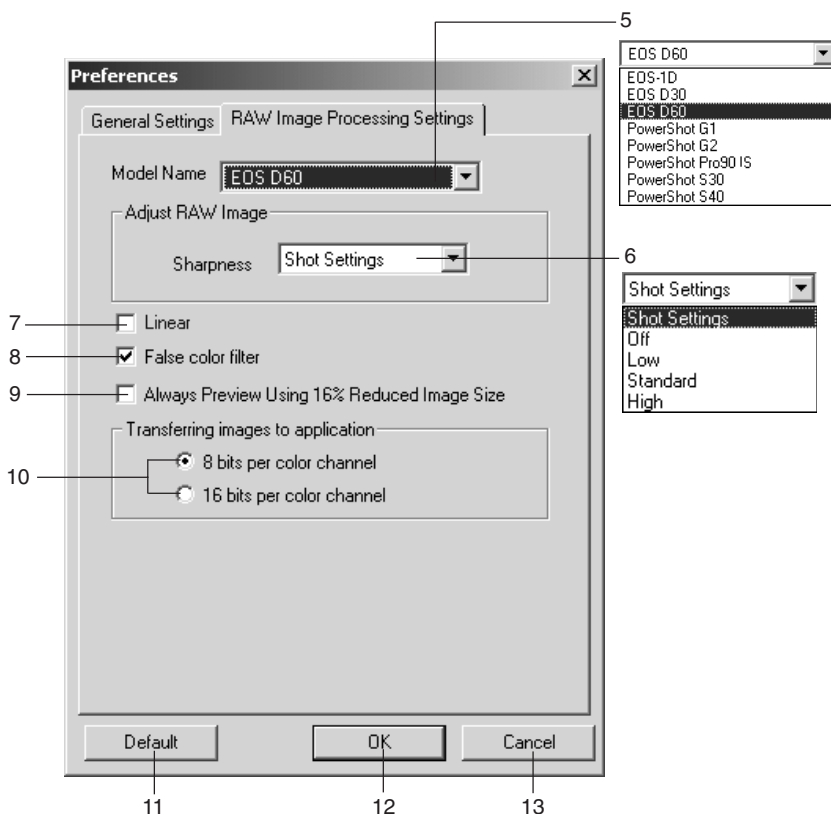
General Settings tab sheet



● **You can specify the settings shown below in the [General Settings] tab sheet.**

- 1 When you click the [Camera Connection] button, the highest numbered image in the highest numbered folder in the DCIM folder is displayed.
When this checkbox is not checked, the lowest numbered image in the lowest numbered folder is displayed.
- 2 Select [File Name] or [Shooting Date/Time] as the information displayed below images.
- 3 Select [inch] or [cm] as the units used in the TWAIN Driver.
- 4 Sets the resolution used when images are transferred to a TWAIN Driver-compatible application such as Photoshop 5.0 LE. You can specify values between 50 and 2400 pixels for [inch] and between 20 and 944 pixels for [cm].

RAW Image Processing Settings tab sheet



● **You can specify the settings shown below in the [RAW Image Processing Settings] tab sheet.**

The settings described here are those shown when [EOS D60] is selected in the [Model Name] list box.

- 5 Select [EOS D60].
- 6 Set the sharpness setting to [Shot Settings], [Off], [Low], [Standard] or [High].
- 7 When you click this checkbox, linear tone curve adjustment is performed on the image. This option minimizes the image degradation that occurs during the tone curve adjustment made when the image is transferred to an application such as Photoshop 5.0 LE, since the adjustment is linear. Select this option when you want to make fine color adjustments independently. Also, when you transfer or save an image for which linear processing has been specified, select [16 bits per color channel] in [Transferring images to application] and select [TIFF(16bit/ch)] in the [Convert from RAW to Other Format] list box (→3-25, 3-26) in the [Save File] dialog box.
- 8 Clicking this checkbox neutralizes false colors.
- 9 When you click this checkbox, a 16% reduced image is shown in the [Preview] mode.
- 10 Select [8 bits per color channel] or [16 bits per color channel] as the transfer bit rate to the TWAIN Driver-compatible application. Note that when [16 bits per color channel] is selected, images are only transferred as 16-bit images if the software supports 16-bit images.

● **The buttons listed below are displayed in each of the tab sheets. They function in the same way in each sheet.**

- 11 Restores the default settings for all the parameters in the currently displayed tab sheet.
- 12 Applies the specified parameters, closes the [Preferences] dialog box and ends the procedure.
- 13 Discards all the settings, restores the parameters to their original values and ends the procedure.



When [EOS-1D], [EOS D30], [PowerShot G1], [PowerShot G2], [PowerShot Pro90 IS], [PowerShot S30] or [PowerShot S40] is selected in the [Model Name] list box, the available settings for the respective camera model are displayed.

Transferring Images to Photoshop 5.0 LE

Use the procedure below to transfer images displayed by the TWAIN Driver to Photoshop 5.0 LE (TWAIN Driver-compatible application).

1 Select the transfer mode from the [Image transfer mode] list box.

- There are 2 available transfer modes.

[Single-Frame Transfer]:

The selected images are transferred as an individual image.

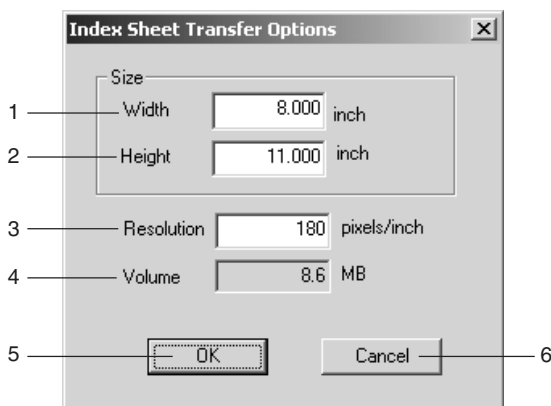
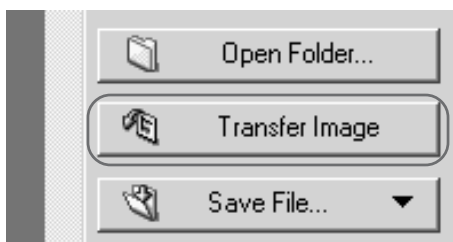
[Transfer as Index Image]:

Thumbnails are created for the selected images and transferred as an index sheet.



2 Click the [Transfer Image] button.

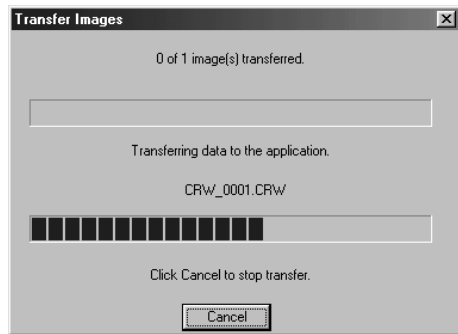
- If you selected [Transfer as Index Image] in the [Image transfer mode] list box, the [Index Sheet Transfer Options] dialog box appears.



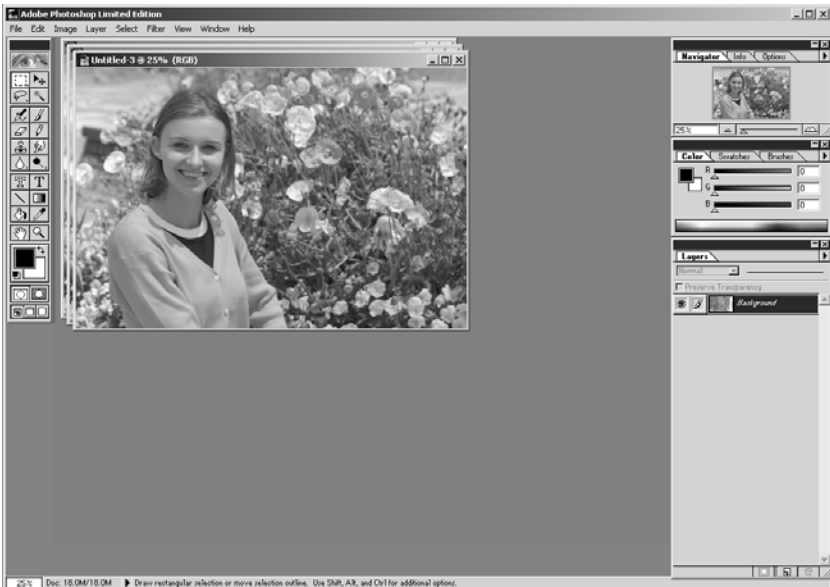
- Enter the width of the index sheet to be created.
- Enter the height of the index sheet to be created.
- Enter the resolution of the index images.
- Indicates the projected image file size based on the specified width, height and resolution.
- Applies the specified settings, closes the [Index Sheet Transfer Options] dialog box and starts index sheet transfer.
- Cancels the index sheet transfer options settings.

3 Enter the settings and click the [OK] button.

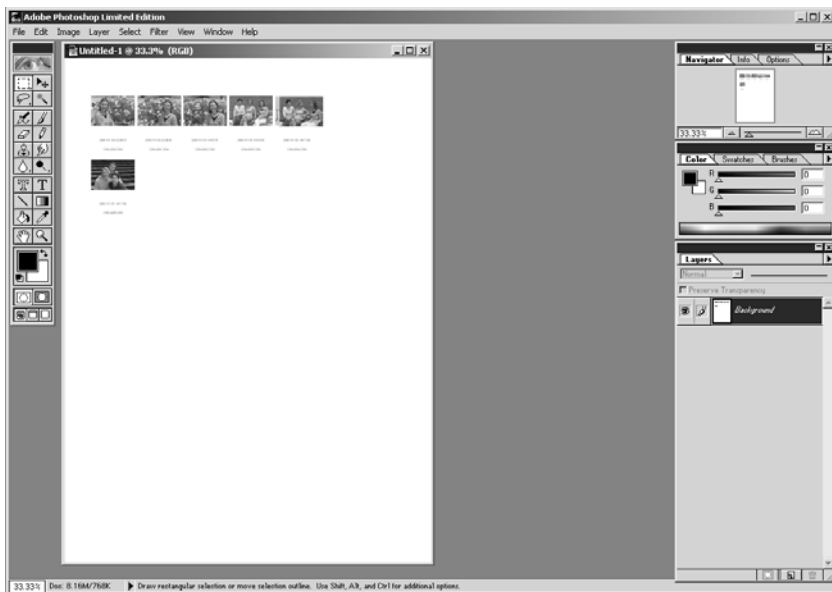
- ➔ The [Transfer Images] dialog box appears and the progress of transferring is displayed.
- You can stop image transferring by pressing the [Cancel] button.



- ➔ The transferred image is displayed in Photoshop 5.0 LE.
- ➔ The [TWAIN] icon is displayed for transferred images. (→3-10)
- Click the [Exit] button in the main window to exit the TWAIN Driver.
- Display an image transferred with [Single-Frame Transfer].



- Display images transferred with [Transfer as Index Image].



- When you select RAW images and transfer the images as index images, the RAW image processing settings specified in the TWAIN Driver are not reflected in the transferred images.
- When you want to transfer a single frame, you can also transfer the image by simply positioning the mouse cursor over the image and double-clicking.
- A range of operations is also available by selecting the image, pressing the right mouse button and selecting an option from the menu that appears.
- You can modify the transfer resolution setting in the [General Settings] tab sheet in the [Preferences] dialog box. (→3-29)
- The maximum number of images that can be transferred at one time to the Windows version of Photoshop 5.0 LE is 30.

4

Downloading Images with the WIA Driver

This chapter describes how to download images with the WIA Driver. The WIA Driver is the driver software used for Windows Me and Windows XP.

A number of restrictions apply to the WIA Driver, including restrictions on image deletion and protection. For more information, refer to: [Start] ► [Programs] ([All Programs] on Windows XP) ► [Canon Utilities] folder ► [EOS D60 WIA Driver] folder ► [WIA Driver Readme].

Downloading Images

When you are using Windows Me or Windows XP, you can download images using a wizard, Explorer or the WIA TWAIN.

Downloading with the Scanner and Camera Wizard

Follow the Wizard's on-screen messages to download images to the computer. Note that you cannot download RAW images using the [Scanner and Camera Wizard]. To download RAW images, use Windows Explorer. (See "Downloading with Windows Explorer" on the next page.)

1 Connect the camera to your computer.

- For more information on connecting the camera to your computer, see "Connecting the Camera to Your Computer" (→2-2).
- ➔ The [Scanner and Camera Wizard] dialog box appears.

2 Click the [Next] button.

- ➔ The image selection window in the [Scanner and Camera Wizard] dialog box appears.

3 Select the image(s) you wish to download and click the [Next] button.

- To select multiple images, press and hold the <Ctrl> or <Shift> key on the keyboard while clicking on images. To select all the images, click the [Select All] button.
- ➔ The image save destination window in the [Scanner and Camera Wizard] dialog box appears.



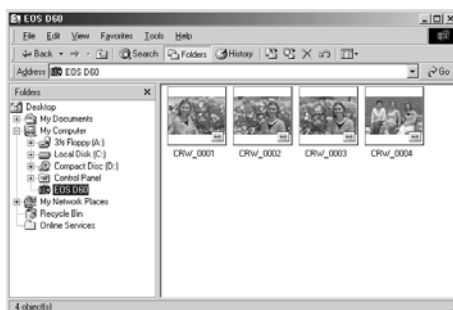
4 Specify a filename and save location and click the [Finish] button.

- The selected images will be downloaded to the specified folder. If you do not specify a folder, they are saved by default to the [My Pictures] folder within the computer's [My Document] folder.

Images can be downloaded to the computer with Windows Explorer just as you would copy any other file. RAW images can also be downloaded this way.

- For more information on connecting the camera to your computer, see “Connecting the Camera to Your Computer” (→2-2).
- The [Scanner and Camera Wizard] dialog box appears.

- You can start Windows Explorer by right-clicking the [Start] button and selecting [Explorer] from the menu that appears.
- The camera’s images will be displayed as thumbnails in the Explorer window.



- **Download by Specifying a Folder**
When you select and right-click an image in Explorer and then select [Save] from the menu that appears, the [Browse for folders] dialog box appears. Click on the folder to be used to save the images and click the [OK] button. The image files and their thumbnails are then saved in the selected folder.
- **Download by Dragging and Dropping**
Select an image in the Explorer window, drag it to the target folder and drop it. RAW image files converted and downloaded in this manner will have the “CRW” file name extension removed but retain the remainder of the original file name. For example, [CRW_0001.CRW] on the CF card will become [CRW_0001] on the computer.

Processing RAW Images with Windows Explorer

When you select and right-click a RAW image in Windows Explorer and then select [Convert] from the menu that appears, RAW Image Converter starts up. You can process RAW images by first clicking the [List for Development Condition Settings...] button. See “Processing RAW Images” (→3-19) for more information on how to process RAW images.



If you use RemoteCapture to take pictures while you are using Windows Explorer to display images on the camera, RemoteCapture may not operate correctly.

7 Select the image(s) you wish to download and click the [Get Picture] button.

- ➔ The selected image(s) will be downloaded to the program.
- The methods for starting the software and using the dialog boxes differ depending on the program you are using. Refer to the User's Manuals provided with your software for details.



RAW images will not be displayed in the WIA TWAIN. Accordingly, RAW images cannot be downloaded with this method. To download RAW images, use Windows Explorer. (See "Downloading with Windows Explorer" (→4-3).)

5

Working with Images in RAW Image Converter

This chapter describes how to use RAW Image Converter to display images that you have saved onto your computer or onto a CF card inserted into a third-party card reader, and how to process and image-process those RAW images.

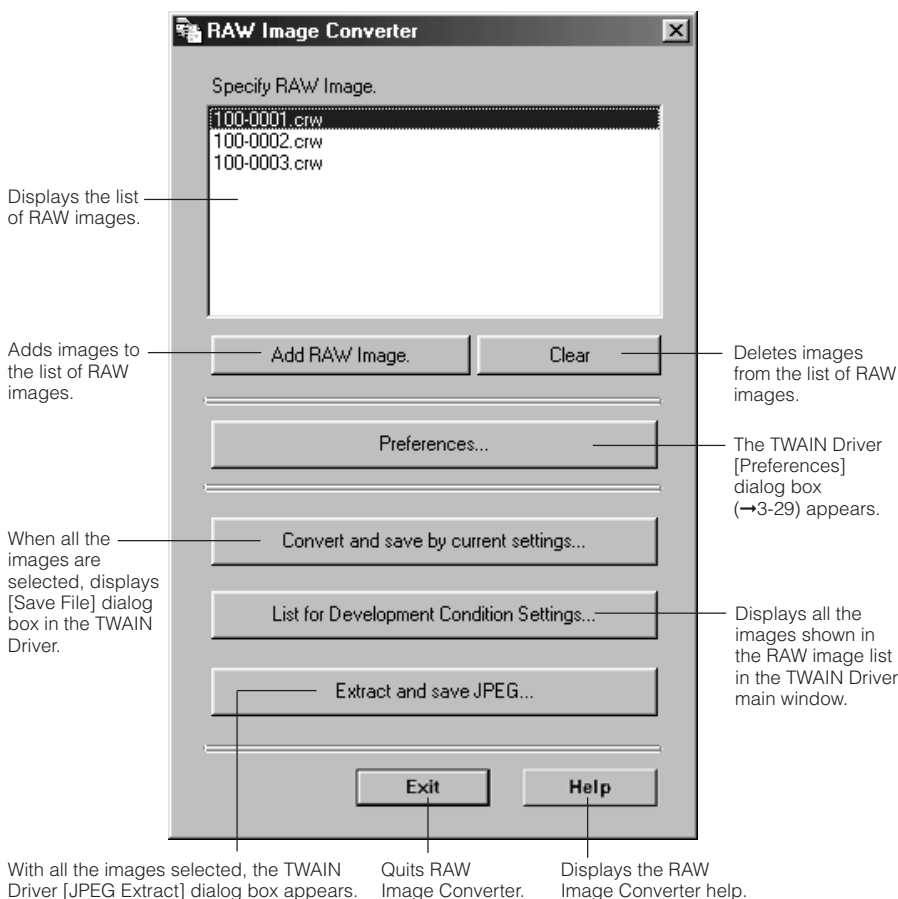
Using RAW Image Converter

When you use the WIA Driver or copy images directly from a card reader, you can use RAW Image Converter to display and process images in the same way as the TWAIN Driver. You can also save the processed images in JPEG or TIFF (8 or 16 bits/channel) format.

1 Start RAW Image Converter.

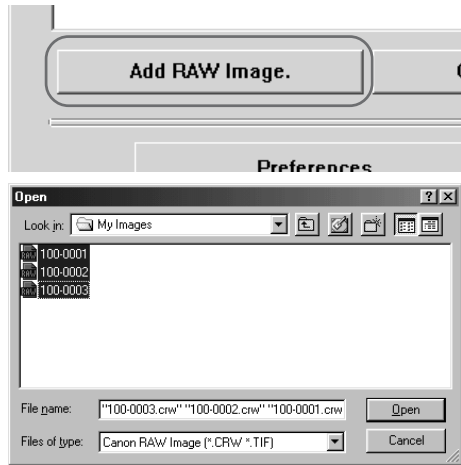
- Click the [Start] button and then select [Programs] ► [Canon Utilities] ► [RAW Image Converter xx] ► [RAW Image Converter].
 - RAW Image Converter version information is displayed in xx.
 - When you are using the WIA Driver, you can also start RAW Image Converter by selecting a RAW image on the camera, press the right mouse button to display the menu and then selecting [Process].
- ➔ The [RAW Image Converter] main window appears.

RAW Image Converter main window

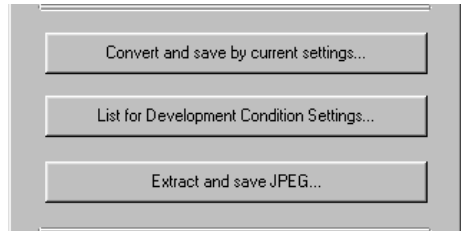


2 Download the images.

- Click the [Add RAW Image.] button, select the images from the [Open] dialog box that appears and add the RAW images to the image list.
- ➔ The RAW images are added to the image list.



3 Image-process and save the images.



- When you click the [Convert and save by current settings...] button and all the RAW images displayed in the image list are selected, the TWAIN Driver's [Save File] dialog box (→3-25) appears. Use this dialog box to process and save the images.
- When you click the [List for Development Condition Settings...] button, all the RAW images shown in the image list are displayed as thumbnails in the TWAIN Driver's main window (→3-4). Use this window to process and image-process the images.
- When you click the [Extract and save JPEG...] button, the TWAIN Driver's [JPEG Extract] dialog box (→3-28) appears. Use this dialog box to save just the JPEG images contained in the selected folder.

4 Click the [Exit] button.



- For more information on using the windows and dialog boxes that appear, see Chapter 3, “Working with Images in the TWAIN Driver”.
- When you display the TWAIN Driver’s main window from RAW Image Converter, the [Camera Settings] button, [Camera Connection] button, [Transfer Image] button, [Erase] button and [Image transfer mode] list box are not shown. To perform tasks such as downloading images from the camera, start the TWAIN Driver from Photoshop 5.0 LE.
- When you click the [List for Development Condition Settings...] button and the [Save File] dialog box appears, the [Do not convert] option in the [Convert from RAW to Other Format] list box is not available.

6

Specifying Camera Settings from Your Computer

6

This chapter provides information on camera settings such as the owner name, date and time.

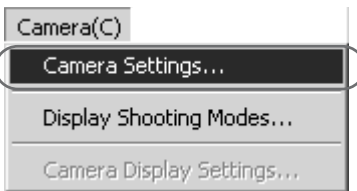
Specifying the Camera Settings

Use the procedure described here to apply the owner name and date/time settings to the camera. The owner name, and date and time that were applied on the camera are recorded with the images.

You can also format (initialize) CF cards and check the camera properties data and the status of the battery and the CF card.

Display the [Camera Settings] dialog box.

- To display this dialog box from the TWAIN Driver, click the [Camera Settings] button in the main window.
- To display this dialog box from ZoomBrowser EX, click the [SETUP OPTIONS] button in the Camera window and select [Camera Settings...] from the menu that appears.
- To display this dialog box from RemoteCapture, select [Camera Settings...] from the [Camera] menu in the Shooting window.



➡ The [Camera Settings] dialog box appears.

Camera Settings dialog box




This box shows the Camera's model name, Body ID and Firmware Version.

These fields set the camera owner and the date and time. You can enter up to 31 characters in [Owner's Name].

This box shows whether a CF card is loaded in the camera along with the available space on the card and its total capacity. You can also format a CF card from this box.

Applies the specified settings, closes the [Camera Settings] dialog box and ends the procedure.

Applies the settings.

The battery level of the camera battery is indicated by  or . When a household power source is used,  is displayed.

Discards all the settings, restores the parameters to their original values and ends the procedure.



Formatting (initializing) a CF card erases all the data on the card. Because formatting also erases protected images, you should check the data recorded on the card carefully before proceeding.

Setting the Owner's Name, Date and Time

1 Enter the Owner's Name.

- Type in the name from your keyboard. You can enter up to 31 characters.

2 Set the Date and Time.

- You can use the [▲] and [▼] buttons to set the Date and Time, or you can select a field and enter the desired date or time from the keyboard. Clicking the [From PC] button imports the Date and Time data from your computer.

3 Click the [Apply] button.

- ➔ The owner's name, date and time settings are applied to the camera.
- Once you click the [Apply] button, the settings remain effective until you reset the owner's name, date or time.
- Clicking the [OK] button applies the specified settings, closes the [Camera Settings] dialog box and ends the procedure.

7

Operating the Camera from Your Computer

7

This chapter describes EOS D60 operations using the RemoteCapture software, such as remote shooting, timer shooting and interval timer shooting.

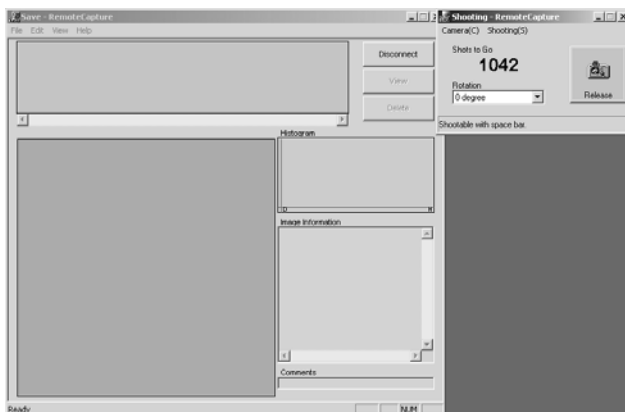
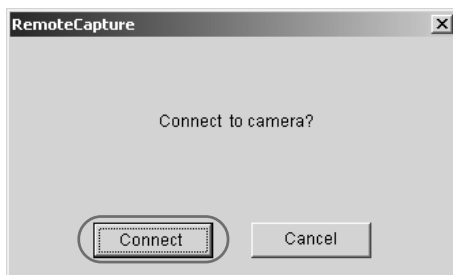
Starting RemoteCapture

- 1 Click the [Start] button and select [Programs] ([All Programs] on Windows XP) ► [Canon Utilities] ► [RemoteCapture] ► [RemoteCapture xx].

- RemoteCapture version information is displayed in xx.
- ➔ The [RemoteCapture] dialog box appears.

- 2 Click the [Connect] button.

- ➔ The Save window and Shooting window appear.



- To quit RemoteCapture, click the [Disconnect] button and select [Exit] from the [File] menu.

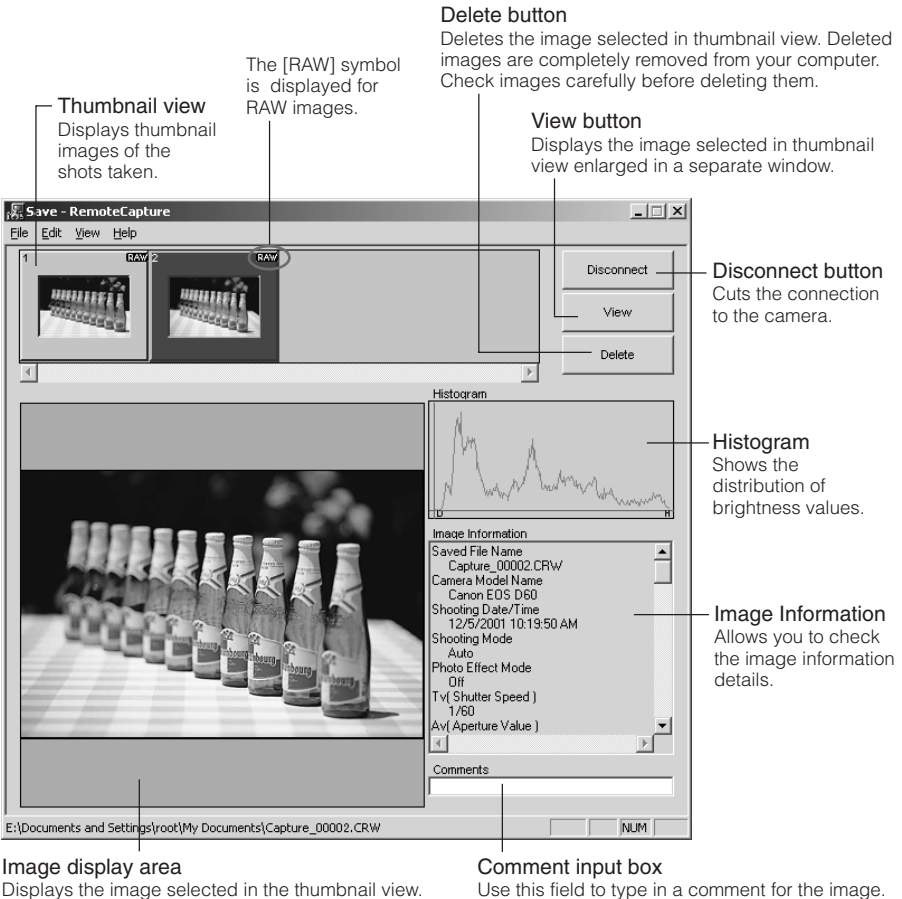


- If you use RemoteCapture to take pictures while you are using the WIA Driver Windows Explorer to display images on the camera, RemoteCapture may not operate correctly.
- When you are using mirror lockup to take pictures, there is a delay of approximately 2 seconds after you click the RemoteCapture [Release] button before the picture is actually taken.



- Selecting [Camera Settings...] from the [Camera] menu in the Shooting window allows you to specify the camera settings. For information on how to specify the camera settings, see Chapter 6 "Specifying Camera Settings from Your Computer".

Save window



7

Shooting window

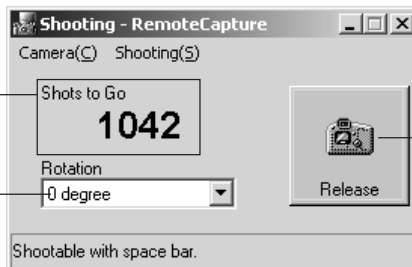
Shots to Go

This box displays the number of frames that can be saved on your computer or on the CF card in the camera.

Rotation list box



Rotate the image to be shot 90 degrees left or right.



Release button

Takes a shot with the camera. The image is automatically saved on your computer. Even when you press the shutter button on the camera, the image is saved on your computer.

Taking Shots from Your Computer

You can control the camera from your computer and take single-frame shots, timer shots and interval timer shots. The images are automatically saved on your computer.

Shots taken with RemoteCapture and saved on your computer can be displayed and image-processed in the TWAIN Driver in the same way as images shot with the camera.

Refer to the Help file for more information on using RemoteCapture.

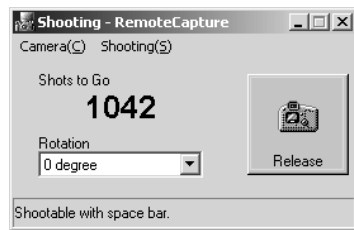
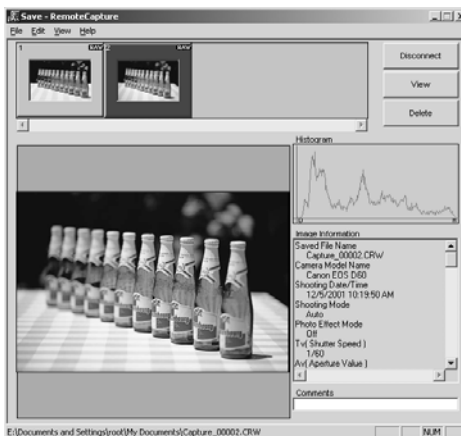
Using RemoteCapture

1 Set the camera up ready to take pictures.

- Focus the camera manually (Manual focus).

2 Click the [Release] button.

→ The image is saved to your computer and displayed on the screen.



- To enlarge the image for checking, select the image and click the [View] button.
→ The image is displayed enlarged in a separate window.
- To delete the image, select the image and click the [Delete] button.
→ The image is deleted.

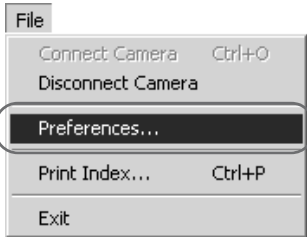


- Because RAW images are processed before being displayed, there is a short delay before the images appear.
- When you select an EOS D60 RAW image and click the [View] button, or when you select [Display in Viewer] in the [View] menu, the JPEG image (Middle/Fine) simultaneously recorded with the RAW image is displayed.
- To load an image rotated, select [90 degree Right] or [90 degree Left] in [Rotation] list box before clicking the [Release] button.
- To rotate a downloaded image, select the image and then select [Rotate saved image 90 degrees Right] or [Rotate saved image 90 degrees Left] in the [Edit] menu.

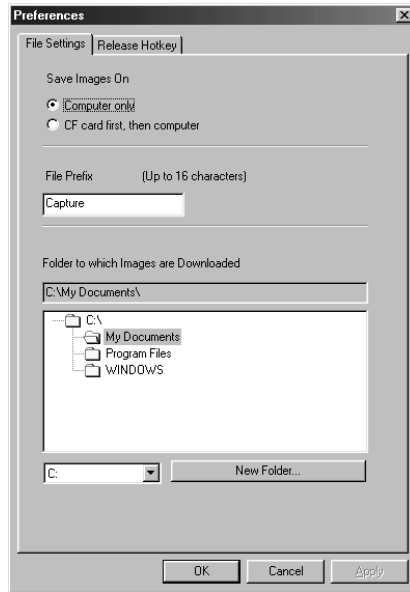
Default Settings

Use the procedure below to select the folder in which images will be saved and to specify the file names.

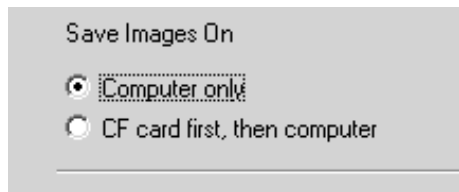
- 1** Select **[Preferences...]** in the **[File]** menu.
→ The **[Preferences]** dialog box appears.



Preferences dialog box



- 2** Select the save destination in which images will be saved.
 - Click the **[Computer only]** or **[CF card first, then computer]** radio button.



- **[Computer only]**
This option allows you to take shots when there is no CF card in the camera or when the CF card is full.
- **[CF card first, then computer]**
This option saves the images both on your computer and on the CF card in the camera.

3 Enter the file name to be used when images are saved.

File Prefix (Up to 16 characters)

Capture

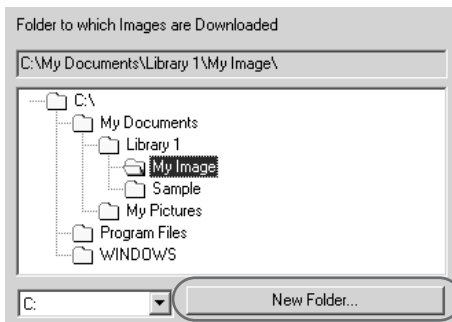
- If you enter [Capture], sequential file names will be assigned automatically beginning with [Capture_0001.jpg] or [Capture_0001.tif].
- File names can include up to 16 characters.

4 Select the folder in which images will be saved.

- Select the drive and then the folder to be used for saved images.
- ➔ The path for the selected folder is displayed in the [Folder to which Images are Downloaded].



- To create a new folder in which to save images, click the [New Folder...] button to create another folder inside the current folder.



5 Click the [OK] button.

- ➔ The settings are saved and the [Preferences] dialog box closes to end the procedure.



You can set the Hotkey for shutter release by selecting the [Release Hotkey] tab.

Printing Images

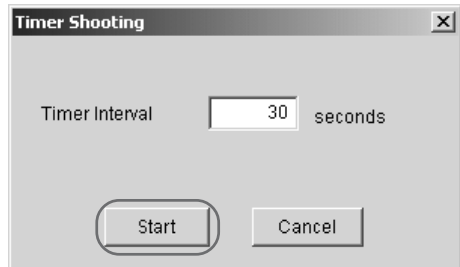
You can print images. All the images shown in the thumbnail view are printed in index format. The time of shooting and the file names are printed with the images.

- 1 Select [Print Index...] in the [File] menu.**
→ The [Printer Setup] dialog box appears.
- 2 Select the printer to be used, specify the print settings and click the [OK] button.**
→ The images are printed.

Timer Shooting

Use this function to specify the timer delay. Timer shooting shots are then taken after the specified number of seconds.

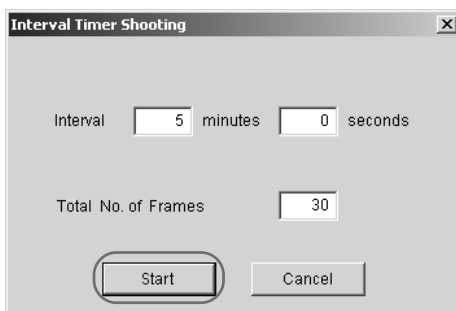
- 1 Select [Timer Shooting...] in the [Shooting] menu.**
→ The [Timer Shooting] dialog box appears.
- 2 Enter a number of seconds and click the [Start] button.**
 - You can set a value between 2 and 30 seconds in 1-second increments.
 - Timer shooting are taken after the specified number of seconds.





Interval Timer Shooting

This function allows you to specify the interval between shots and the number of shots.

- 1 Select [Interval Timer Shooting...] in the [Shooting] menu.**
→ The [Interval Timer Shooting Hints] dialog box appears.
- 2 Check the information in the warnings and then click the [OK] button.**
→ The [Interval Timer Shooting] dialog box appears.
- 3 Enter the shooting interval and the number of shots, and then click the [Start] button.**
 - You can set a shooting interval between 5 seconds and 60 minutes in 1-second increments.
 - You can set up to a maximum of 9999 shots.
 - Interval timer shooting is performed using the specified interval between shots and the specified number of shots.



 On some types of computer, if you set a short interval between shots and there is insufficient time to download and save the images, it may not be possible to take shots at the specified interval. If this occurs, set a longer interval between shots and take the shots again.

 Depending on the available capacity on your computer's hard disk, the maximum number of available shots that can be set may be less than 9999. You can check the number of shots that can be set by referring to the number of available shots shown in the Shooting window. (→7-3)

8

Working with Images in ZoomBrowser EX

This chapter explains how to use ZoomBrowser EX to perform a range of operations from downloading the camera's images to printing them.

Starting ZoomBrowser EX

You can start up ZoomBrowser EX either from the event dialog box that appears when you connect the camera to your computer, or using the [Start] button or desktop icon.

Starting ZoomBrowser EX from the Event Dialog Box

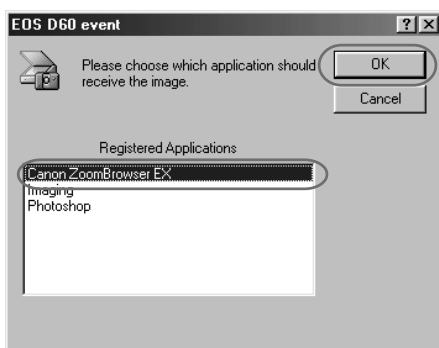
When you connect the camera to your computer, start up ZoomBrowser EX from the event dialog box.

1 Connect the camera to your computer.

- For more information on connecting the camera to your computer, see “Connecting the Camera to Your Computer” (→2-2).
- ➔ The event dialog box appears.

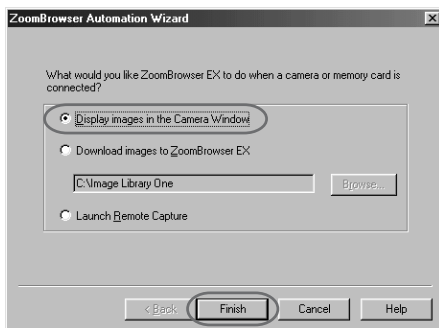
2 Select the [Canon ZoomBrowser EX] and click the [OK] button.

- ➔ The [ZoomBrowser Automation Wizard] dialog box appears.



3 Confirm that [Display images in the Camera Window] radio button is selected and click the [Finish] button.

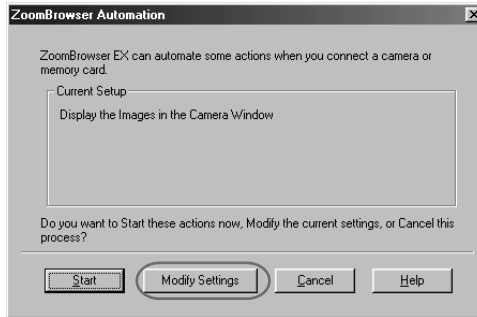
- ➔ The Camera window and ZoomBrowser EX main window appear.



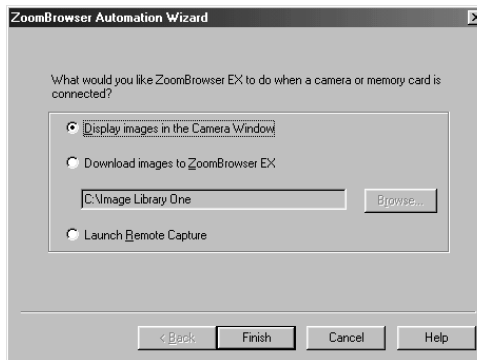
You can also set up your software so that ZoomBrowser EX starts automatically without the event dialog box being displayed. See “To Start Software Automatically (Windows 98 SE/Windows 2000)” (→2-5) for details.

What to Do the Next Time ZoomBrowser EX is Started

When you select [Canon ZoomBrowser EX] in the event dialog box and click the [OK] button, the previously selected automatic processing settings are displayed in the [ZoomBrowser Automation] dialog box. To use these settings unchanged, click the [Start] button. To do nothing, click the [Cancel] button. To change the settings, click the [Modify Settings] button.



- ➔ When you click the [Modify Settings] button, the [ZoomBrowser Automation Wizard] dialog box appears.



- When the [Display images in the Camera Window] radio button is selected, click the [Finish] button.
- ➔ The Camera window appears.
- When the [Download images to ZoomBrowser EX] radio button is selected, click the [Next] button and then proceed as instructed by the on-screen messages.
- ➔ The images on the camera are downloaded.
- When you select the [Launch Remote Capture] radio button, click the [Finish] button.
- ➔ RemoteCapture (→7-2) starts up.



For more information on using the [ZoomBrowser Automation] and [ZoomBrowser Automation Wizard] dialog boxes, refer to the ZoomBrowser EX Help menu or PDF manual, ZoomBrowser EX Software User's Guide.

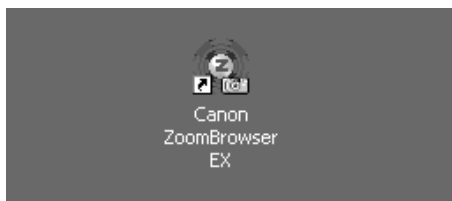
Starting ZoomBrowser EX Using the [Start] Button

When you connect the camera to your computer and ZoomBrowser EX does not start up (as when Photoshop 5.0 LE starts up when you connect the camera to your computer), or when you want to download images from a folder on your computer or from a card reader without connecting the camera to your computer, use the [Start] button or the desktop icon to start ZoomBrowser EX.

Also, because Windows Me does not support automatic software starting, use the procedure below to start ZoomBrowser EX.

Click the [Start] button and then select [Programs] ([All Programs] on Windows XP) ► [Canon Utilities] ► [ZoomBrowser EX] ► [ZoomBrowser EX] to start ZoomBrowser EX.

- You can also start ZoomBrowser EX by double-clicking the [Canon ZoomBrowser EX] icon on the desktop.
- ➡ The ZoomBrowser EX main window appears.



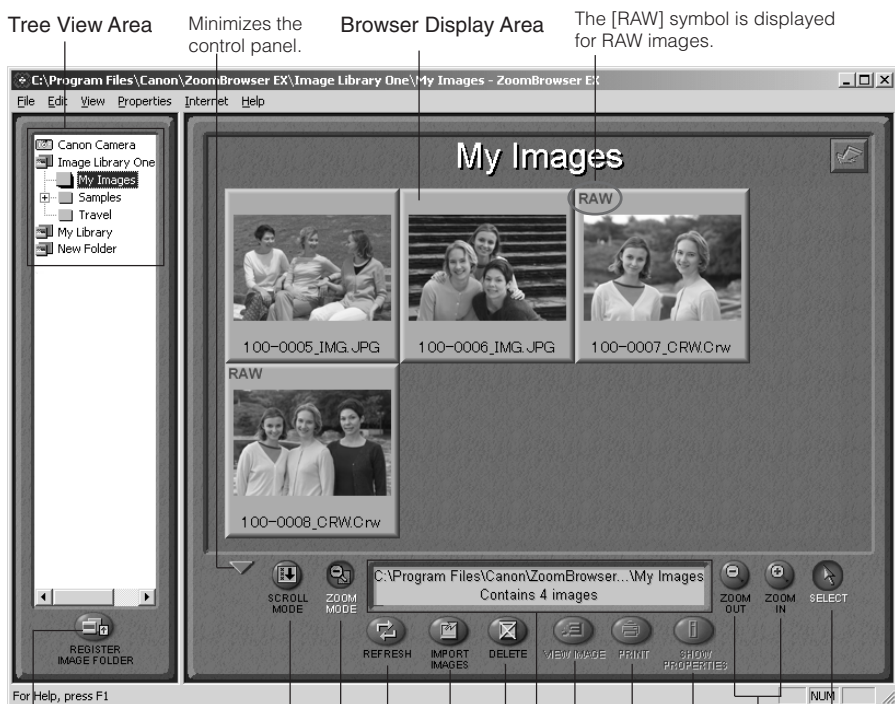
The ZoomBrowser EX Window

When you start ZoomBrowser EX, the ZoomBrowser EX main window appears. Then, when the connection to the camera opens, the Camera window appears.



For more information on using ZoomBrowser EX, refer to the ZoomBrowser EX Help menu or PDF manual, ZoomBrowser EX Software Guide.

ZoomBrowser EX main window



Registers the selected folder as the [Image Folder]. (→8-10)

Switches the display in the Browser Display Area to scroll mode. (→8-9)

Switches the display in the Browser Display Area to zoom mode. (→8-9)

Updates the folder. (→8-10)

Click here to connect to the camera or card reader.

Click here to delete images.

Displays the information for the selected image.

Click here to display images.

Click here to print images.

Displays image information.

Click here to enlarge or reduce images.

Click here to select images.

Camera window

Sets various camera settings. See "Specifying the Camera Settings" (→6-2) for information on how to specify the settings.

An image of the connected camera or CF card will be displayed here.

Thumbnail

The [RAW] symbol is displayed for RAW images.



Reconnects the camera to your computer.

Lets you choose the image selection method.

Click here to delete images.

Downloads the selected images onto the computer.

Saves images from the computer onto the CF card in the camera.

Rotates images displayed as thumbnails.

Click here to print images.

Lets you edit the slide show and DPOF print specifications.

Displays the Camera window help.

Displays the shooting data.

Downloading and Saving Images

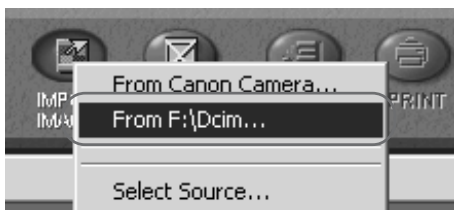
The procedure below describes how to download and save images from a CF card loaded in the camera or in a card reader.

1 Display the images.

- To display the images on the camera, select [Canon Camera] in the Tree View Area.
- If ZoomBrowser EX started up automatically, the [ZoomBrowser Automation] dialog box appears. If you click the [Modify Settings] button, select the [Display images in the Camera Window] radio button and then click the [Finish] button, the images on the camera automatically appear in the Camera window.

➔ In the Camera window, the images on the camera are displayed as thumbnails (reduced images).

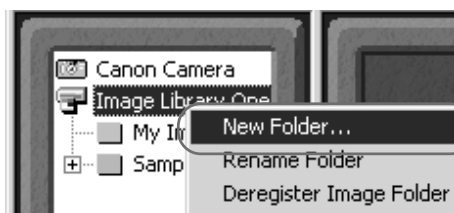
- To display the images from a card reader, click the [IMPORT IMAGES] button and select [From Dcim] from the menu that appears.
- ➔ The images from the CF card will be displayed as thumbnails in the Camera window.



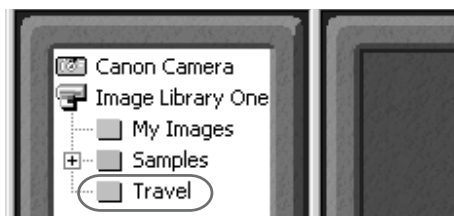
2 Create a new folder for saving images from the camera.

- In the Tree View Area, right-click the [Image Library One] folder, select [New Folder...] from the menu that appears and type in a folder name.

➔ A new folder is created.



3 In the Tree View Area, select the newly created folder.

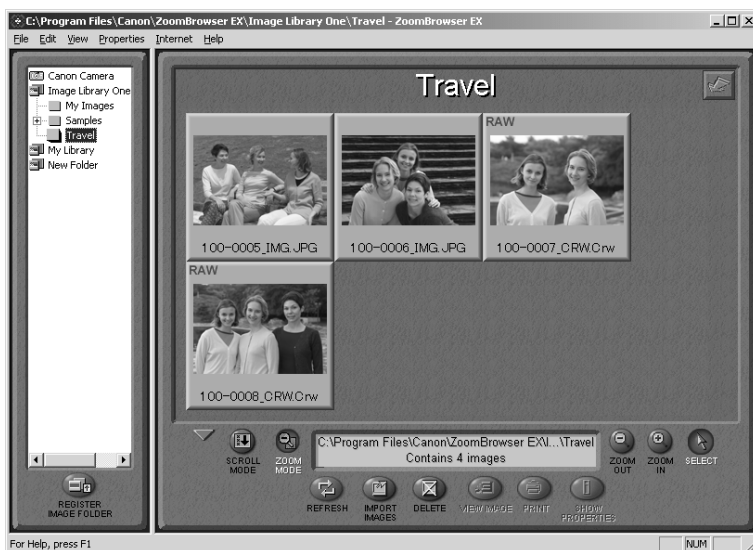


4 Select the images you wish to download from the Camera window and click the [DOWNLOAD] button.

- Click a thumbnail to select the corresponding image.



- ➔ Downloaded images are saved to the computer and appear in the Browser Display Area.



- The created folder will usually be on the [C:] drive of your hard disk in [Program Files] folder ► [Canon] folder ► [ZoomBrowser EX] folder ► [Image Library One] folder. The downloaded images are saved inside the created folder.
- You can also download images to the computer by dragging them from the Camera window and dropping them on the Browser Display Area or Tree View Area.
- To disconnect the camera, click the close box [X] at the upper right of the Camera window. The Camera window will close.

ZoomBrowser EX Features

The bottom of the ZoomBrowser EX main window contains the buttons that control various functions. This topic describes four of those features that are particularly convenient.



For information on ZoomBrowser EX operations not described here, refer to the ZoomBrowser EX Help menu or PDF manual, ZoomBrowser EX Software Guide.

Switching the Display Mode

You can change between the Zoom and Scroll modes to suit your purposes when images are displayed in the Browser Display Area.

Zoom Mode

When you create a sub-folder within a folder, use this mode to display all the images inside the sub-folder too.



The images inside the sub-folders are also displayed.

Scroll Mode

Use this mode to just display the images within one folder. When there are more images than capacity of the Browser Display Area, scroll bars appear on the right of the Browser Display Area. The sub-folders only appear as folder icons in this mode.



The images inside the sub-folders are not displayed.

Scroll Bar

Registering a Folder as a Image Folder

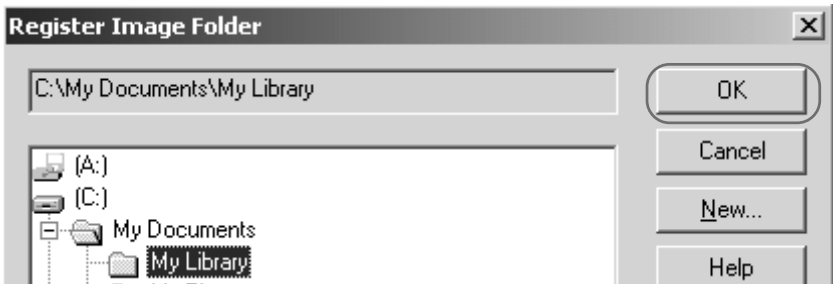
Folders shown in the Tree View Area with a [] symbol are called Image Folder. ZoomBrowser EX only manages the images contained in these folders and the sub-folders nestled within them.

1 Click the [REGISTER IMAGE FOLDER] button.

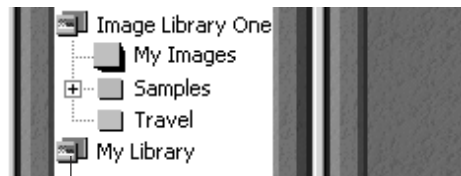
→ The [Register Image Folder] dialog box appears.



2 Select the folder you wish to register and click the [OK] button.



→ The folder will be registered as an Image Folder.



— The folder is registered as a Image Folder.

Refreshing a Folder

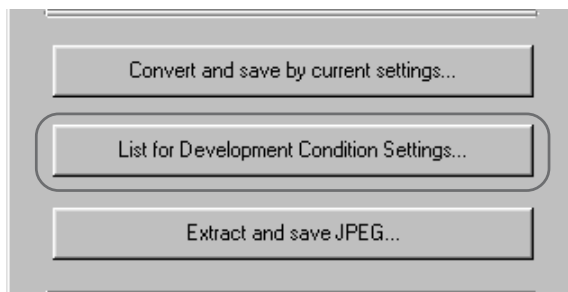
Only image files that are added, copied or edited using ZoomBrowser EX will be displayed correctly in a folder that is part of a ZoomBrowser EX image folder. If you move or copy image folders with the Windows Explorer program or edit images with another application, the information contained in ZoomBrowser EX will not be up-to-date.

To update a folder, select it and click the [REFRESH] button. This will refresh the images information and any sub-folders in the selected folder.

Processing RAW Images with ZoomBrowser EX

To process RAW images in ZoomBrowser EX, start from RAW Image Converter.

- 1 Select a RAW image.**
 - Select a RAW image from the Browser Display Area of ZoomBrowser EX main window.
- 2 Click the [File] menu and select [RAW Image Processing...].**
 - ➔ The RAW Image Converter main window appears.
- 3 Click the [List for Development Condition Settings...] button.**
 - ➔ The RAW image appears as a thumbnail image in the TWAIN Driver main window.
 - See “Processing RAW Images” (→3-19) for information on how to process RAW images.



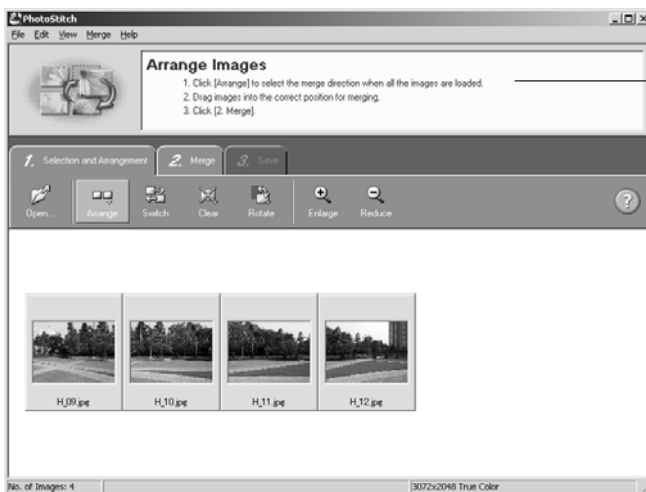
For more information on using the RAW Image Converter, see “Using RAW Image Converter” (→5-2).

Merging Panoramic Images with PhotoStitch

You can merge a series of overlapping images into a single, seamless panorama.

Select the JPEG images in the Browser Display Area, click the [Edit] menu and select [PhotoStitch...].

- ➔ PhotoStitch starts up.
- Follow the instructions in the guidance window to merge the images.
- Please refer to the PhotoStitch Help menu for more details.



Follow the instructions to merge the images.



You cannot open RAW images in PhotoStitch.

Printing Images

1 Select the image(s) you wish to print.

- Process RAW images before printing them. (→8-11)

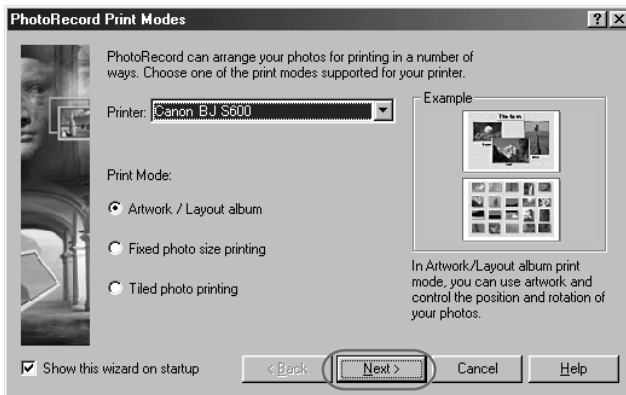
2 Click the [PRINT] button and select [Layout] from the displayed menu.

- ➔ The PhotoRecord printing utility starts up and the [PhotoRecord Print Modes] dialog box appears.



3 Select a print mode and click the [Next] button.

- Select the [Artwork/Layout album] radio button for the purposes of this example.



- ➔ The page setup window from the [PhotoRecord print mode] dialog box opens.

4 Set the paper size and other settings and click the [Next] button.

- ➔ The layout settings window from the [PhotoRecord print mode] dialog box opens.

5 Select the layout method and then press [Finish].

- ➔ The PhotoRecord window appears.
- You can use this window to specify more detailed changes to the layout.

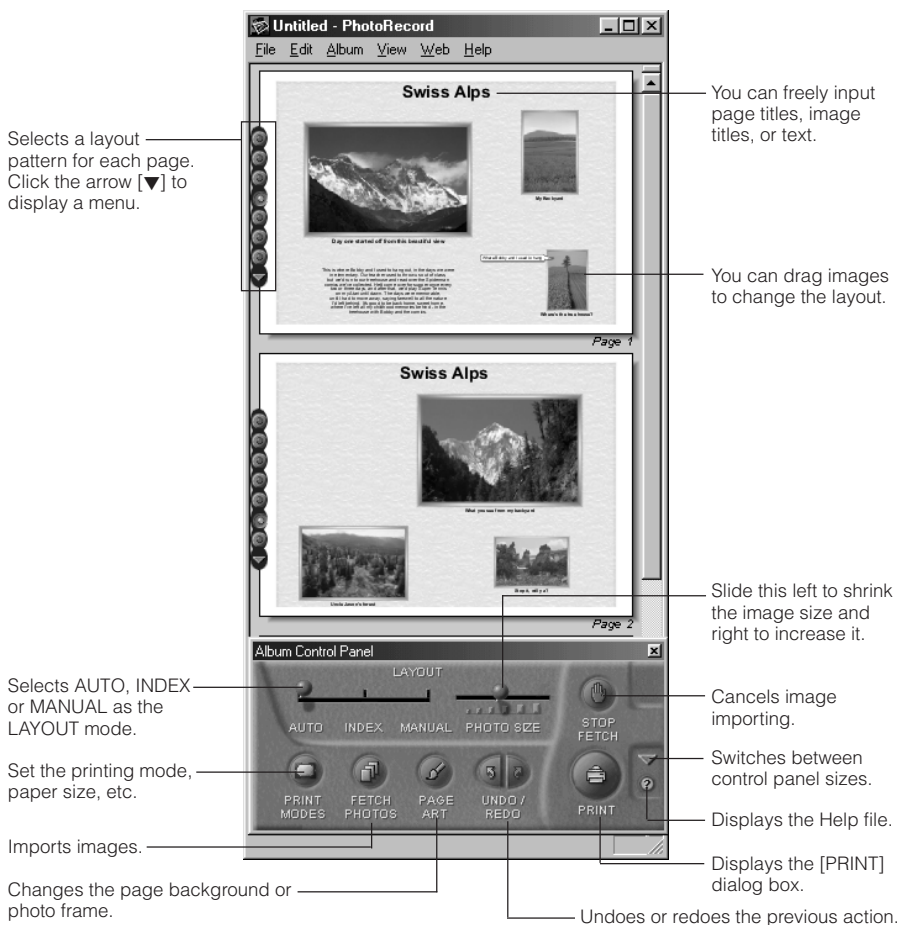
6 Click the [Print] button in the PhotoRecord window.

- ➔ The [Print] dialog box appears.

7 Click the [PRINT] button.

→ The images are printed.

PhotoRecord window



When you click the [PRINT] button in the ZoomBrowser EX main window and select [Index] from the displayed menu, the [Print Index] dialog box appears. Set the desired thumbnail size and paper size, then click the [PRINT] button to start printing the index.

When you select the [Artwork/Layout album] option, you can resize or reposition images freely for printing. The other print modes allow you to do such things as tile the images for printing or arrange them for printing on Canon perforated paper. Refer to the PDF manual, ZoomBrowser EX User Guide, for a detailed explanation of the print modes.

9

Troubleshooting and Uninstallation

This chapter provides a troubleshooting manual and describes the software uninstallation procedures.

Troubleshooting

When the “Could not complete installation correctly” or “Communication between the camera and computer failed” message appears, check the items described below.

Driver installation failed.

- **Have you installed the EOS D60 TWAIN Driver or EOS D60 WIA Driver?**
 - You cannot install the driver correctly unless the EOS D60 TWAIN Driver or EOS D60 WIA Driver is already installed. Insert the SOLUTION DISK into the CD-ROM drive and install the EOS D60 TWAIN Driver or EOS D60 WIA Driver.
- **Is the cable firmly plugged into its socket?**
 - Ensure that the plug on the interface cable is securely plugged into the USB port on your computer. (→2-2)

I have installed the TWAIN Driver or WIA Driver but the camera and computer cannot communicate.

● Does your computer comply with these requirements?

→ The system has a built-in USB port and it comes with Windows 98 Second Edition, Windows Me, Windows 2000 or Windows XP preinstalled. (Not compatible with upgraded machines.)

* The USB interface is not supported for systems not complying with the above conditions.

● Are the camera and computer connected correctly?

→ Connect the camera to your computer correctly using the interface cable. (→2-2)

● Is there sufficient charge left in the camera battery?

→ Your computer does not supply power to the camera. Connect the DC Coupler Kit to the camera or load a fully charged battery into the camera before connecting it to your computer. (→ “Inserting and Removing the Battery Pack” in the EOS D60 Instructions.)

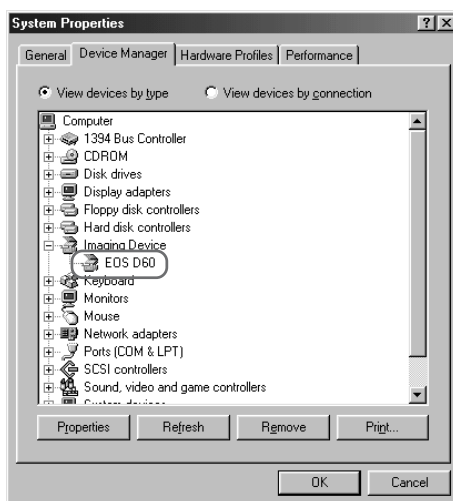
● Do you have more than one interface cable connected?

If you connect more than one interface cable to the same computer, the driver and camera may not operate normally.

→ Shut down the EOS D60 TWAIN Driver or EOS D60 WIA Driver and disconnect all the interface cables. Then reconnect just the interface cable that connects the camera to your computer.

● Is the driver operating normally?

Open the [Device Manager] tab sheet (→9-5). Click the plus symbol [+] to the left of [Imaging Device] and check that [EOS D60] is displayed.



→ If [EOS D60] does not appear, the driver is not operating normally. Briefly disconnect and then reconnect the interface cable, ensuring that the connection is secure. If [EOS D60] still does not appear, use the following procedure to re-install the driver.

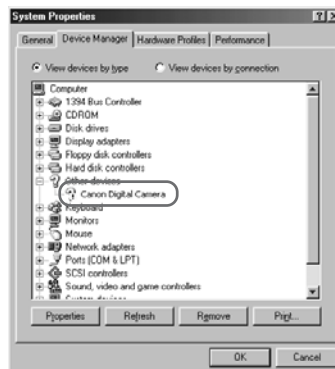
- 1 Disconnect the interface cable and uninstall the driver. (→9-7)
- 2 Re-install the driver. (→1-2)
- 3 After installation ends, restart your computer.
- 4 Following the restart, connect the camera to your computer using the interface cable. (→2-2)
- 5 Finish driver installation. (→1-5)

→ When the [X], [!] or [?] symbol is displayed beside [EOS D60], part of the driver is missing or corrupted. Use the following procedure to re-install the driver.

- 1 Delete [EOS D60] displayed in [Imaging Device].
- 2 Disconnect the interface cable and uninstall the driver. (→9-7)
- 3 Re-install the driver. (→1-2)
- 4 After installation ends, restart your computer.
- 5 Following the restart, connect the camera to your computer using the interface cable. (→2-2)
- 6 Finish driver installation. (→1-5)

● Is the driver installed correctly?

Open [Device Manager] (→9-5). Click the plus symbol [+] to the left of [Other devices] or [Unknown devices] and check whether [EOS D60] or [Canon Digital Camera] is displayed.



→ If [EOS D60] or [Canon Digital Camera] is displayed in [Other devices] or [Unknown devices], the driver was not installed correctly.

Use the following procedure to re-install the driver.

- 1 Delete [EOS D60] or [Canon Digital Camera] displayed in [Other devices] or [Unknown devices].
- 2 Disconnect the interface cable and uninstall the driver. (→9-7)
- 3 Re-install the driver. (→1-2)
- 4 After installation ends, restart your computer.
- 5 Following the restart, connect the camera to your computer using the interface cable. (→2-2)
- 6 Finish driver installation. (→1-5)

To Display the Device Manager

● Windows 98 SE and Windows Me

- Click the [Start] button and select [Settings] ► [Control Panel]. Then double-click the [System] icon to open the [System Properties] dialog box and select the [Device Manager] tab.

● Windows 2000

- Click the [Start] button and select [Settings] ► [Control Panel]. Then double-click the [System] icon to open the [System Properties] dialog box, select the [Hardware] tab and click the [Device Manager...] button.

● Windows XP

- Click the [Start] button and select [Control Panel] ► [Performance and Maintenance] ► [System]. Then select the [Hardware] tab and click the [Device Manager] button.

Uninstallation Procedure

- Before beginning the software uninstallation, close any other software you are using and disconnect the interface cable from your computer.

Uninstalling the Software

The following explanation uses the procedures for uninstalling ZoomBrowser EX as an example for uninstalling other programs as well.

- If you have uninstalled ZoomBrowser EX because of a corrupt database file or other problem, please also delete the [Database] folder, which can be found within the [My Computer] ► [C:] ► [Program Files] folder ► [Canon] folder ► [ZoomBrowser EX] folder.
- For information on uninstalling the TWAIN Driver or WIA Driver, see “Uninstalling the Driver”. (→9-7)
- Windows 2000 or Windows XP Professional users should log on with [Administrator] privileges.
- To prevent computer malfunctions, always restart your computer after you have uninstalled the software. Re-installing the software without first restarting your computer is particularly likely to result in computer malfunctions.

1 Click the [Start] button and select [Programs] ([All Programs] on Windows XP) ► [Canon Utilities] ► [ZoomBrowser EX] ► [ZoomBrowser EX Uninstall].

2 Proceed with the uninstallation as directed by the on-screen messages.

➡ Software is uninstalled.



When uninstallation ends, restart your computer.

Uninstalling the Driver

To uninstall the driver, you must first uninstall the [EOS D60 TWAIN Driver] or [EOS D60 WIA Driver], then remove [EOS D60] from the [Scanners and Cameras Properties] dialog box or the [Scanners and Cameras] dialog box, and then delete the driver settings files.

- Windows 2000 or Windows XP Professional users should log on with [Administrator] privileges.
- To prevent computer malfunctions, always restart your computer after you have uninstalled the driver. Re-installing the driver without first restarting your computer is particularly likely to result in computer malfunctions.

1 Uninstall [EOS D60 TWAIN Driver] or [EOS D60 WIA Driver].

- If you are using Windows 98 SE or Windows 2000, click the [Start] button and then select [Programs] ► [Canon Utilities] ► [EOS D60 TWAIN Driver] ► [TWAIN Driver Uninstall].
- If you are using Windows Me or Windows XP, click the [Start] button and then select [Programs] ([All Programs] on Windows XP) ► [Canon Utilities] ► [EOS D60 WIA Driver] ► [WIA Driver Uninstall].

2 Proceed with the uninstallation as directed by the on-screen messages.

→ The driver is uninstalled.

3 Connect the camera to your computer.

- If the event dialog box or the [Scanner and Camera Wizard] dialog box appears, click the [Cancel] button. If the software program selected for automatic starts up, exit the program.

4 Click the [Start] button and then select [Settings] ► [Control Panel].

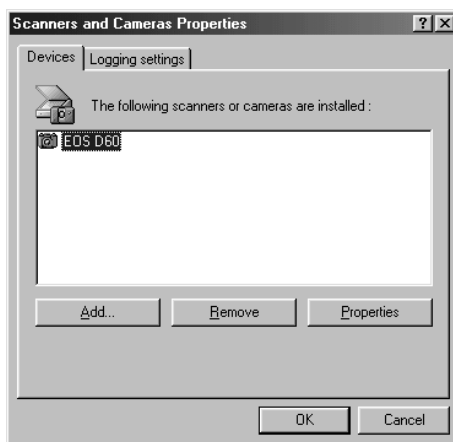
- Windows XP users should click the [Start] button and then click [Control Panel] ► [Printers and Other Hardware].

5 Double-click the [Scanners and Cameras] icon.

- Windows XP users should click the [Scanners and Cameras].
- If you are using Windows 98 SE or Windows 2000, the [Scanners and Cameras Properties] dialog box appears. If you are using Windows Me or Windows XP, the [Scanners and Cameras] dialog box appears.

6 Remove [EOS D60].

- If you are using Windows 98 SE or Windows 2000, select [EOS D60] and click the [Remove] button.
- If you are using Windows Me or Windows XP, select and right-click [EOS D60] and then select [Delete] from the menu that appears. When the confirmation message appears, click the [Yes] button.
- Once [EOS D60] is no longer displayed in the [Scanners and Cameras Properties] dialog box or the [Scanners and Cameras] dialog box, close the dialog box and proceed as follows.



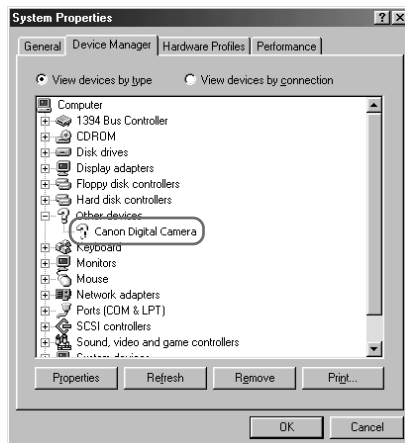
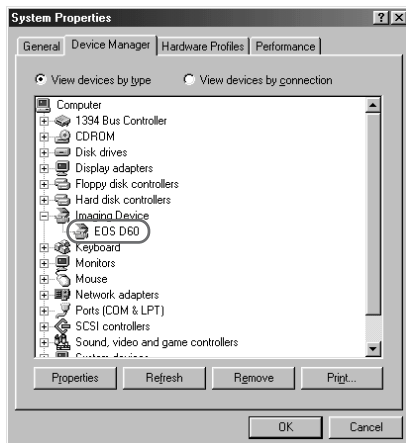
- If drivers for other devices such as scanners are already installed, those device names are displayed.
- In Windows Me and Windows XP, the icons for the installed cameras and scanners are displayed.

7 Open the [Device Manager] tab sheet.

- See “To Display the Device Manager” (→9-5) for instructions on how to display the Device Manager.

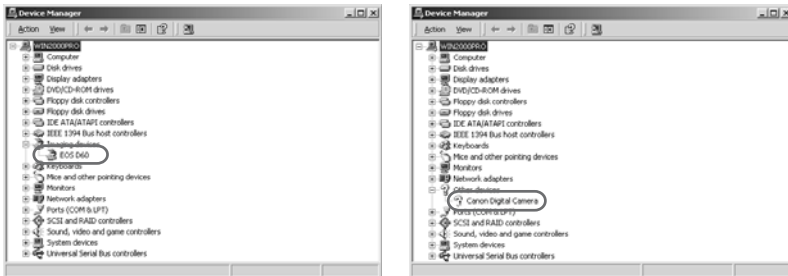
8 Delete [EOS D60] or [Canon Digital Camera].

For Windows 98 SE and Windows Me users:



- If [EOS D60] or [Canon Digital Camera] is displayed when you click the plus symbol [+] to the left of [Imaging Device] or [Other devices], select [EOS D60] or [Canon Digital Camera] and click the [Remove] button.
- When the confirmation message appears, click the [OK] button.
- Click the [OK] button to close the [System Properties] dialog box.
- If [EOS D60] or [Canon Digital Camera] is displayed in both [Imaging devices] and [Other devices], or is displayed more than once in [Other devices], delete all the occurrences.
- When [EOS D60] or [Canon Digital Camera] is not displayed in [Imaging devices] or [Other devices], close the dialog box and proceed as follows.

For Windows 2000 and Windows XP users:



- If [EOS D60] or [Canon Digital Camera] is displayed when you click the plus [+] symbol to the left of [Imaging devices] or [Other devices], select and right-click [EOS D60] or [Canon Digital Camera] and select [Remove] from the menu that appears.
- When the confirmation message appears, click the [OK] button.
- Click the [OK] button to close the [System Properties] dialog box.
- If [EOS D60] or [Canon Digital Camera] is displayed in both [Imaging devices] and [Other devices], or is displayed more than once in [Other devices], delete all the occurrences.
- When [EOS D60] or [Canon Digital Camera] is not displayed in [Imaging devices] or [Other devices], close the dialog box and proceed as follows.

9 Delete the driver settings files.

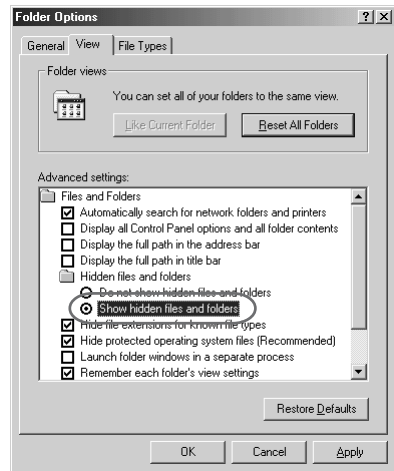
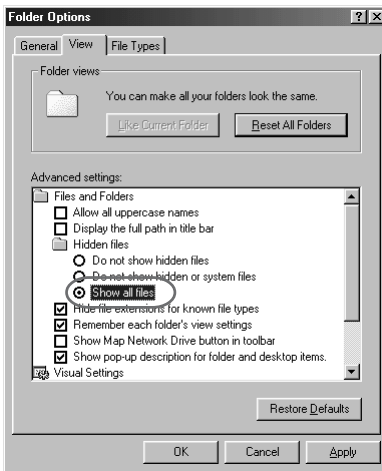
- The method for deleting the settings files differs depending on your operating system software. Refer to the information on the following pages to delete the settings files.
 - Windows 98 SE, Windows Me (→9-10)
 - Windows 2000 (→9-12)
 - Windows XP (→9-14)

Deleting the Driver Settings Files

Mistakenly deleting the wrong files can cause Windows to malfunction. Check the file names carefully before deleting any files.

For Windows 98 SE and Windows Me users:

- 1 Click the [Start] button and select [Settings] ► [Folder Options...].**
 - Windows Me users should click the [Start] button and select [Settings] ► [Control Panel]. Then double-click the [Folder Options...] icon.
 - ➔ The [Folder Options] dialog box appears.
- 2 Select the [View] tab.**
 - ➔ The [View] tab sheet appears.
- 3 Select the [Show all files] radio button in [Hidden files].**
 - Windows Me users should select the [Show hidden files and folders] radio button in [Hidden files and folders].
 - If you have already selected this option, proceed without changing it.



- 4 Click the [OK] button to close the [Folder Options] dialog box.**
 - ➔ Previously hidden files and folders are now visible.

5 In the [My Computer] window on the desktop, double-click [C:] ► [Windows] folder ► [Inf] folder to open.

6 Delete [Drvdata.bin] and [Drvidx.bin].



7 Double-click the [Other] folder in the [Inf] folder to open.

8 Delete the [Canon.IncCAP_D60] file.

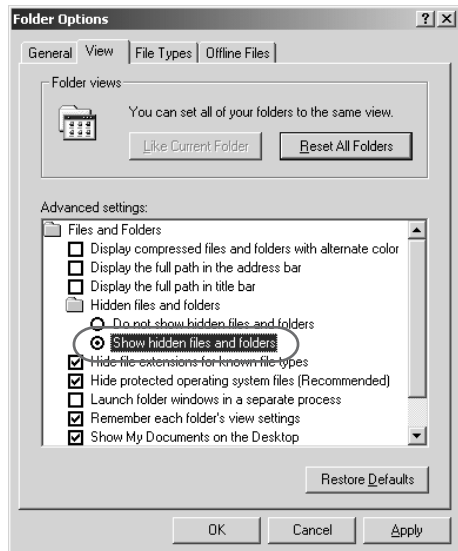


The [Inf] folder contains a large number of files. Deleting the wrong files could, at worst, prevent Windows from starting up. When you delete files, check the file names very carefully before proceeding.

For Windows 2000 users:

- 1** Click the [Start] button and select [Settings] ► [Control Panel].
- 2** Double-click the [Folder Options] icon.
→ The [Folder Options] dialog box appears.
- 3** Select the [View] tab.
→ The [View] tab sheet appears.
- 4** Select the [Show hidden files and folders] radio button in [Hidden files and folders].

- If you have already selected this option, proceed without changing it.



- 5** Click the [OK] button to close the [Folder Options] dialog box.
→ Previously hidden files and folders are now visible.

6 In the [My Computer] window on the desktop, open [C:] ► [WINNT] folder ► [inf] folder.

7 Search for files called [Oem*] or [Oem*.pnf].

- Substitute a number such as 0 or 1 for the asterisk (*). Also, because [Oem*] and [Oem*.pnf] files come in pairs, substitute the same number for the asterisk in each pair (e.g. Oem0 and Oem0.pnf).
- The [Inf] folder may contain multiple pairs of [Oem*] files.

8 Check the contents of the [Oem*] files.

- Double-click an [Oem*] file to display the file contents. Check that [,*** Canon Digital Camera USB Setup File ****] appears on the first line.
- If there are multiple [Oem*] files, repeat this procedure.
- Once you have identified the target file or files, make a note of the file names.

9 Delete the [Oem*] and [Oem*.pnf] files you identified.



The [Inf] folder contains a large number of files. Deleting the wrong files could, at worst, prevent Windows from starting up. When you delete files, check the file names very carefully before proceeding.

For Windows XP users:**1 Click the [Start] button and select [Control Panel] ► [Appearance and Themes] ► the [Folder Options] icon.**

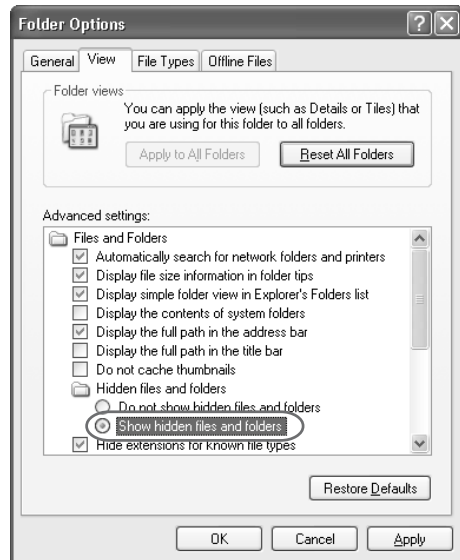
→ The [Folder Options] dialog box appears.

2 Select the [View] tab.

→ The [View] tab sheet appears.

3 Select the [Show hidden files and folders] radio button in [Hidden files and folders].

- If you have already selected this option, proceed without changing it.

**4 Click the [OK] button to close the [Folder Options] dialog box.**

→ Previously hidden folders and files now become visible.

- 5** Click the [Start] button and then [My Computer].
- 6** Double-click [C:] drive ► [WINDOWS] folder ► [Inf] folder to open.
- 7** Search for files called [Oem*] or [Oem*.pnf].
 - Substitute a number such as 0 or 1 for the asterisk (*). Also, because [Oem*] and [Oem*.pnf] files come in pairs, substitute the same number for the asterisk in each pair (e.g. Oem0 and Oem0.pnf).
 - The [Inf] folder may contain multiple pairs of [Oem*] files.
- 8** Check the contents of the [Oem*] files.
 - Double-click an [Oem*] file to display the file contents. Check that [;*** Canon Digital Camera USB Setup File ****] appears on the first line.
 - If there are multiple [Oem*] files, repeat this procedure.
 - Once you have identified the target file or files, make a note of the file names.
- 9** Delete the [Oem*] and [Oem*.pnf] files you identified.



The [Inf] folder contains a large number of files. Deleting the wrong files could, at worst, prevent Windows from starting up. When you delete files, check the file names very carefully before proceeding.

Uninstalling Photoshop 5.0 LE

- Before beginning the software uninstallation, close any other programs you are using and disconnect the interface cable from your computer.

Uninstall Photoshop 5.0 LE as follows.

- Click the [Start] button and select [Programs] ([All Programs] on Windows XP) ► [Adobe] ► [Photoshop 5.0 Limited Edition] ► [Uninstall Photoshop 5.0 Limited Edition].
- Proceed with the uninstallation as directed by the on-screen messages.



When uninstallation ends, restart your computer.

Index

C

Camera Connection button 3-5, 3-6
 Camera Settings button 3-4, 6-2
 Camera Settings dialog box 6-3
 Camera window 8-6
 CF Card Folder Structure and File
 Names 2-8
 Checkmark button 3-5, 3-14
 Click white balance button 3-5, 3-22
 Click white balance checkbox 3-5, 3-22
 Click White Balance Function 3-22
 Color tone list box 3-5, 3-23
 Comment input box 3-4, 3-16
 Contrast list box 3-5, 3-23

D

Digital Exposure Compensation 3-20
 Digital Exposure Compensation button
 3-5, 3-20
 Display Mode list box 3-4, 3-10
 Display Size list box 3-4, 3-11

E

Erase button 3-5, 3-17
 Exit button 3-3, 3-5, 3-33

I

Image display format list box 3-4, 3-9
 Image Display Formats 3-8
 Image information display area 3-4, 3-16
 Image recording formats and image
 processing options 3-13
 Image transfer mode list box 3-4, 3-32
 Index Sheet Transfer Options dialog
 box 3-32

J

JPEG Extract dialog box 3-28
 JPEG Preview 3-11

O

Open Folder button 3-5, 3-7

P

PhotoRecord VII
 PhotoRecord window 8-14
 Photoshop 5.0 LE VIII
 PhotoStitch VIII
 Preferences button 3-4, 3-29
 Preferences dialog box 7-5
 Preferences dialog box
 General Settings tab sheet 3-29
 RAW Image Processing Settings tab
 sheet 3-30
 Preview 3-11
 Protect button 3-5, 3-15

R

RAW Image Converter VIII
 RAW Image Converter main window 5-2
 RemoteCapture VIII
 RemoteCapture
 Save window 7-3
 Shooting window 7-3
 Remove checkmark button 3-5, 3-14
 Remove protect button 3-5, 3-15
 Rotate left 90 degrees button 3-4, 3-18
 Rotate right 90 degrees button 3-4, 3-18

S

Saturation list box 3-5, 3-23
 Save File button 3-5, 3-24, 3-27
 Save File dialog box 3-25
 Scroll Mode 8-9
 Select button 3-5, 3-16
 Select image folder display area 3-4, 3-6
 Setting the Date and Time 6-4
 Setting the Owner's Name 6-4
 Show Version button 3-5

T

Thumbnail display 3-10

To Display the Device Manager 9-5

To Start Software Automatically

 Windows 98 SE/Windows 2000 2-5

 Windows XP 2-6

Transfer Image button 3-5, 3-32

TWAIN Driver VII

TWAIN Driver main window 3-4

W

White Balance 3-21

White balance list box 3-5, 3-21

WIA Driver VII

Z

Zoom Mode 8-9

ZoomBrowser EX VII

ZoomBrowser EX main window 8-5

Adobe Customer Support

Adobe Systems Inc. technical support information is available in the PDF file format on the supplied CD-ROM.

PDF File Location and Opening Instructions

Place the Adobe Photoshop LE CD-ROM in the drive and double-click the [My Computer] icon on the Windows desktop, followed by the [Photosle] CD-ROM icon. The window will show folders with language names. Double-click the appropriate language folder and the [Support.pdf] file within it.

- To read PDF files, Adobe Acrobat Reader must already be installed on your computer. An installer for this program is on the Adobe Photoshop LE CD-ROM within each language folder in a folder labeled [Acroread].



CANON INC. 30-2, Shimomaruko 3-chome, Ohta-ku, Tokyo 146-8501, Japan

U.S.A. _____ CANON U.S.A. INC.

For all inquiries concerning this camera, call toll free in the U.S.
1-800-OK-CANON or write to: Customer Relations, Canon U.S.A., Inc.
One Canon Plaza, Lake Success, N.Y. 11042-1198

CANADA _____ CANON CANADA INC. HEADQUARTERS

6390 Dixie Road, Mississauga, Ontario L5T 1P7, Canada

CANON CANADA INC. MONTREAL BRANCH

5990, Côte-de-Liesse, Montréal Québec H4T 1V7, Canada

CANON CANADA INC. CALGARY OFFICE

2828, 16th Street, N.E. Calgary, Alberta T2E 7K7, Canada

For all inquiries concerning this camera, call toll free in Canada
1-800-OK-CANON

EUROPE, _____ CANON EUROPA N.V.

AFRICA & Bovenkerkerweg 59-61, P.O. Box 2262, 1180 EG Amstelveen,
MIDDLE EAST The Netherlands

CANON COMMUNICATION & IMAGE FRANCE S.A.

102, Avenue du Général de Gaulle 92257 La Garenne-Colombes Cedex, France

CANON UK LTD.

Woodhatch Reigate Surrey RH2 8BF, United Kingdom

CANON DEUTSCHLAND GmbH

Europark Fichtenhain A10, 47807 Krefeld, Germany

CANON ITALIA S.p.A.

Palazzo L, Strada 6, 20089 Rozzano, Milanofiori, Milano, Italy

CANON Benelux N.V./S.A.

Bessenveldstraat 7, 1831 Diegem (Machelen), Belgium

CANON Schweiz AG

Geschäftsbereich Wiederverkauf, Industriestrasse 12, CH-8305 Dietlikon,
Switzerland

CANON G. m. b. H.

Oberlaaerstrasse 233, 4th floor, 1100 Wien, Austria

CANON España, S. A.

C/Joaquín Costa, 41, 28002 Madrid, Spain

SEQUE Soc. Nac. de Equip., Lda.,

Praça da Alegria, 58, 2º, 1269-149 Lisboa, Portugal

CENTRAL & _____ CANON LATIN AMERICA, INC. DEPTO DE VENTAS

SOUTH AMERICA 703 Waterford Way Suite 400 Miami, FL 33126 U.S.A.

**CANON LATIN AMERICA, INC. CENTRO DE SERVICIO Y
REPARACION**

Apartado 2019, Zona Libre de Colón, República de Panamá

ASIA _____ CANON HONGKONG CO., LTD.

9/F, The Hong Kong Club Building, 3A Chater Road, Central, Hong Kong

CANON SINGAPORE PTE. LTD.

79 Anson Road, #09-01 / 06, Singapore 079906

OCEANIA _____ CANON AUSTRALIA PTY. LTD.

1 Thomas Holt Drive, North Ryde, N.S.W. 2113, Australia

CANON NEW ZEALAND LTD.

Fred Thomas Drive, P.O. Box 33-336, Takapuna, Auckland, New Zealand

JAPAN _____ CANON SALES CO., INC.

12-15 Mita, 3-Chome, Minato-ku, Tokyo 108-8011, Japan

This Instructions booklet is current as of January 2002. For information on using the camera with system accessories introduced after this date, contact your nearest Canon Service Center.