

Canon

EOS-1D

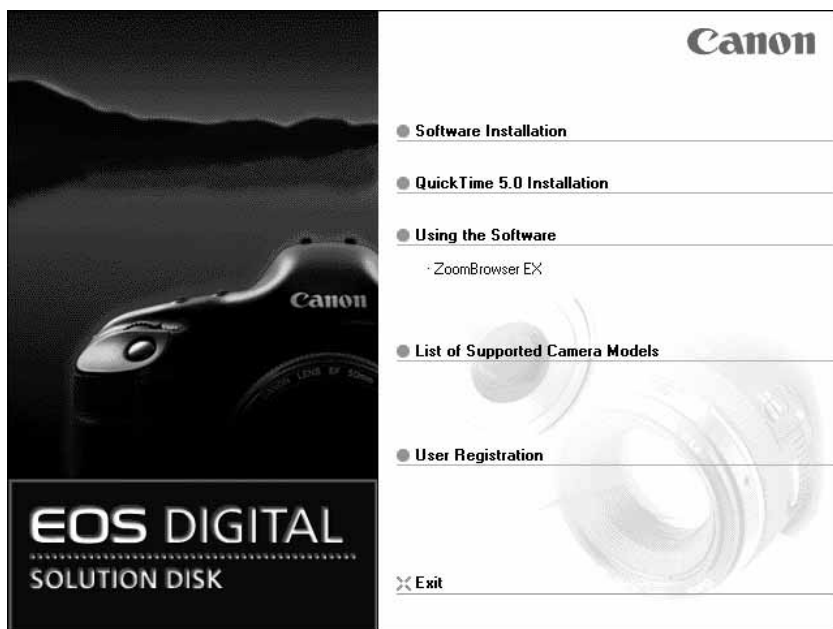
DIGITAL

Software

Windows

INSTRUCTIONS

EOS DIGITAL SOLUTION DISK Ver. 3



Please read these instructions carefully before using the EOS-1D software.
This guide should be kept in a safe place so that it can be used for future reference.

E

English Edition

READ CAREFULLY BEFORE USING!

CANON SOFTWARE LICENSE AGREEMENT

IMPORTANT - READ THIS AGREEMENT BEFORE USING THE SOFTWARE ON THE CD-ROM IN THIS BOX. BY USING THE SOFTWARE, YOU AGREE TO BE BOUND BY THE TERMS OF THIS AGREEMENT.

This is a license agreement (the [Agreement]) between you and Canon Inc. ([Canon]).

IF YOU DO NOT AGREE TO THE TERMS AND CONDITIONS OF THIS AGREEMENT, DO NOT USE THE SOFTWARE PROGRAM ON THE CD-ROM AND THE USER MANUAL IN THIS BOX (COLLECTIVELY, THE [SOFTWARE]) AND RETURN THE SOFTWARE WITHIN 30 DAYS FROM THE DATE OF PURCHASE TO YOUR POINT OF PURCHASE FOR A REFUND.

In consideration of the right to use the SOFTWARE, you agree to abide by the terms and conditions of this Agreement.

1. **LICENSE:** Canon grants you the non-exclusive right to use the SOFTWARE only on a single computer. You may physically transfer the SOFTWARE from one computer to another provided that the SOFTWARE is used on only one computer at a time. You shall not install or use the SOFTWARE on a network, multiple CPU, multiple site arrangement, or any other hardware configuration where the SOFTWARE is accessible to more than one CPU or to more than one user.

YOU SHALL NOT ASSIGN, SUBLICENSE, RENT, LEASE, LOAN, CONVEY OR OTHERWISE USE, TRANSFER, COPY, TRANSLATE, CONVERT TO ANOTHER PROGRAMMING LANGUAGE, ALTER, MODIFY, DECOMPILE OR DISASSEMBLE THE SOFTWARE, IN WHOLE OR IN PART, EXCEPT AS EXPRESSLY PROVIDED IN THIS AGREEMENT.

2. **BACK-UP COPY:** You may make one copy of the SOFTWARE solely for back-up purposes, or copy the SOFTWARE onto the permanent storage device (e.g. a hard disk) of your computer and retain the original for back-up purposes. Any other copying of the SOFTWARE is a violation of this Agreement. You must reproduce and include the copyright notice on the back-up copy.
3. **SUPPORT AND UPDATES:** Canon is not responsible for providing maintenance or support for use of the SOFTWARE. No updates, fixes or support will be made available for the SOFTWARE.
4. **LIMITED WARRANTY AND LIMITATION OF LIABILITY:** It is your responsibility to choose, maintain and match the hardware and software components of your computer system. Thus Canon does not guarantee uninterrupted service or correction of errors or that the functions or performance of the SOFTWARE will meet your requirements. THE SOFTWARE IS LICENSED ON AN [AS IS] BASIS AND WITHOUT WARRANTY OF ANY KIND. The CD-ROM storing the SOFTWARE is warranted only against defective material under normal use for a period of ninety (90) days after purchase from an authorized Canon dealer as evidenced by your sales receipt. Your sole remedy for a defective CD-ROM shall be replacement of the same without charge when returned by you at your expense to your point of purchase and proven to be defective upon inspection. The replacement CD-ROM will be warranted for the remainder of the original ninety (90) day warranty period of the defective CD-ROM. The limited warranty does not apply if the failure of the CD-ROM resulted from accident, abuse or misapplication of the SOFTWARE and shall not extend to anyone other than the original user of the SOFTWARE.

EXCEPT AS SPECIFICALLY SET FORTH IN THIS PARAGRAPH 4, CANON, CANON'S

SUBSIDIARIES, DISTRIBUTORS AND DEALERS DISCLAIM ALL WARRANTIES, EXPRESS OR IMPLIED, INCLUDING ANY WARRANTY OF MERCHANTABILITY OR FITNESS FOR A PARTICULAR PURPOSE, WITH RESPECT TO THE SOFTWARE.

NEITHER CANON NOR ANY OF CANON'S SUBSIDIARIES, DISTRIBUTORS OR DEALERS IS LIABLE FOR ANY DAMAGES HOWSOEVER CAUSED, INCLUDING WITHOUT LIMITATION, DIRECT, CONSEQUENTIAL OR INCIDENTAL LOSS OR DAMAGE INCLUDING LOSS OF PROFITS, EXPENSE OR INCONVENIENCE HOWSOEVER CAUSED OR ARISING OUT OF THE SOFTWARE OR THE USE THEREOF.

NEITHER CANON, NOR ANY OF CANON'S SUBSIDIARIES, DISTRIBUTORS OR DEALERS SHALL HAVE ANY OBLIGATION TO INDEMNIFY YOU AGAINST ANY CLAIM OR SUIT BROUGHT BY A THIRD PARTY ALLEGING THAT THE SOFTWARE OR THE USE THEREOF INFRINGES ANY INTELLECTUAL PROPERTY OF SUCH THIRD PARTY.

5. **TERM:** This Agreement is effective upon your using the SOFTWARE and remains in effect until expiration of all copyright interests in the SOFTWARE unless earlier terminated. You may terminate this Agreement by destroying the SOFTWARE. This Agreement will also terminate without notice to you if you fail to comply with any of the terms of this Agreement and you must then promptly return the SOFTWARE. In addition, Canon may enforce its other legal rights.
6. **U.S. GOVERNMENT RESTRICTED RIGHTS NOTICE:** The SOFTWARE is provided with restricted rights. Use, duplication or disclosure is subject to restrictions as set forth in either subparagraph (c) (1) (ii) of the Rights in Technical Data and Computer software clause at DFARs 252.227-7013 or subparagraph (c) (1) and (2) of the Commercial Computer Software Restricted Rights Clause at FAR 52.227-19, as applicable.
7. **SEVERABILITY:** In the event that any provision of this Agreement is declared or found to be illegal by any court or tribunal of competent jurisdiction, such provision shall be null and void with respect to the jurisdiction of that court or tribunal and all the remaining provisions of this Agreement shall remain in full force and effect.
8. **CONTROLLING LAW:** The terms of this Agreement as it relates to purchases of the Software in the United States of America shall be governed and construed in all respects in accordance with the laws and regulations of the State of New York, without reference to choice of law principles. The terms of this Agreement as it relates to purchases of the Software in Canada shall be governed by the laws of the province of Ontario.
9. **OWNERSHIP:** All rights, including but not limited to copyrights and trade secret rights, to the SOFTWARE belong to Canon, its affiliated corporations and third party licensors. Your use of the SOFTWARE is subject to the United States, Canada and other applicable copyright and trademark laws and nothing in this Agreement constitutes a waiver of the rights of Canon, its affiliated corporations and third party licensors under such laws. Nothing contained in Paragraph 1 shall be construed to give Canon any ownership rights in any images, graphics or textual material that you save in connection with the Software.
10. **ACKNOWLEDGEMENT:** BY USING THE SOFTWARE, YOU ACKNOWLEDGE THAT YOU HAVE READ THIS AGREEMENT, UNDERSTOOD IT, AND AGREE TO BE BOUND BY ITS TERMS AND CONDITIONS. YOU ALSO AGREE THAT THIS AGREEMENT IS THE COMPLETE AND EXCLUSIVE STATEMENT OF AGREEMENT BETWEEN YOU AND CANON CONCERNING THE SUBJECT MATTER HEREOF AND SUPERSEDES ALL PROPOSALS OR PRIOR AGREEMENTS, VERBAL OR WRITTEN, AND ANY OTHER COMMUNICATIONS BETWEEN THE PARTIES RELATING TO THE SUBJECT MATTER HEREOF. NO AMENDMENT TO THIS AGREEMENT SHALL BE EFFECTIVE UNLESS SIGNED BY A DULY AUTHORIZED OFFICER OF CANON.

Contents

READ CAREFULLY BEFORE USING! I

- About These Instructions and the Symbols Used IV

Safety Precautions V

- Disclaimer V
- Trademark Acknowledgments V
- About the ZoomBrowser EX Software User Guide VI
- About QuickTime VI

About the Software VII

- EOS DIGITAL SOLUTION DISK VII
- Adobe Photoshop 5.0 LE DISK VIII

Computer System Requirements IX

1 Installing the Software 1-1

Installing the Software 1-2

- EOS DIGITAL SOLUTION DISK Installation 1-2
- Installing Photoshop 5.0 LE 1-4
- Complete the Installation of the TWAIN and WIA Drivers 1-5
- Please Register Your Camera! 1-8

2 Getting Ready to Work with Images 2-1

Connecting the Camera to Your Computer 2-2

Inserting a CF Card into Your Card Reader 2-4

3 Working with Images in the TWAIN Driver 3-1

Starting the TWAIN Driver 3-2

Displaying Images 3-6

- Displaying Images by Connecting the Camera to Your Computer 3-6
- Displaying Images by Connecting a Card Reader 3-7

Selecting the Image Display Format 3-9

Selecting the Display Mode and Display Size 3-10

- Selecting the Display Mode 3-10
- Selecting the Display Size 3-12

Selecting Images 3-13

- Selecting Images with the Mouse 3-13
- Selecting Images from the Control Panel 3-13

Working with Selected Images 3-14

- Operations that Can Be Used with Images 3-14
- Attaching Checkmarks to Selected Images 3-15
- Protecting Images 3-16
- Selecting Images by Condition 3-17
- Checking the Image Information 3-17
- Rotating Images 3-18
- Playing Back Sound 3-18
- Erasing Images 3-19

Processing RAW Images 3-20

- Selecting the Color Matrix 3-21
- Correcting the Brightness (Digital Exposure Compensation) 3-22
- Adjusting the Color and Brightness (Adjust Tone Curve) 3-23
- Adjusting the White Balance 3-26
- Saving the White Balance 3-29

Setting the IPTC Information 3-30

Saving Images 3-35

- Saving Images from the Camera to Your Computer 3-35

Specifying the Preferences 3-38

Transferring Images to Photoshop 5.0 LE 3-41

4 Downloading Images with the WIA Driver 4-1

Downloading Images 4-2

- Downloading with the Scanner and Camera Wizard 4-2
- Downloading with Windows Explorer 4-3
- Downloading with the WIA TWAIN 4-5

5 Working with Images in RAW Image Converter 5-1

Using RAW Image Converter 5-2

6 Specifying Camera Settings from Your Computer 6-1

Specifying the Camera Settings	6-2
Basic Settings	6-2
Detailed Settings	6-5
Personal Function Settings	6-6
Setting Up Personal Functions	6-6
Description of Personal Functions	6-9
Checking, Saving, and Loading	
Personal Function Settings	6-21
Setting the Parameters	6-24
Setting the Parameters	6-24
Selecting the Personal White Balance	
.....	6-30
Selecting the Personal White Balance ..	6-30

7 Operating the Camera from Your Computer 7-1

Starting RemoteCapture	7-2
Taking Shots from Your Computer	7-4
Using RemoteCapture	7-4
Default Settings	7-5
Printing Images	7-7
Timer Shooting	7-7
Interval Timer Shooting	7-8

8 Working with Images in ZoomBrowser EX 8-1

Starting ZoomBrowser EX	8-2
The ZoomBrowser EX Window	8-3
Downloading and Saving Images	8-5
ZoomBrowser EX Features	8-7
Switching the Display Mode	8-7
Registering a Folder as a Image Folder	8-8
Refreshing a Folder	8-8
Processing RAW Images with ZoomBrowser EX	8-9
Merging Panoramic Images with PhotoStitch	8-10
Printing Images	8-11

9 Troubleshooting and Uninstallation 9-1

Troubleshooting	9-2
Uninstallation Procedure	9-6
Uninstalling the Software	9-6
Uninstalling the Driver	9-7
Uninstalling Photoshop 5.0 LE	9-16
Index	9-17
Adobe Customer Support	9-19

About These Instructions and the Symbols Used

The information in these instructions is valid for the Windows 98 Second Edition, Windows Me, Windows 2000, and Windows XP Home Edition/Professional (referred to hereafter as Windows XP) operating systems. However, where explanations are common to all the operating systems, the screens shown are from Windows 98 Second Edition (referred to hereafter as Windows 98 SE).

Descriptions of EOS-1D operations assume that the reader is familiar with the information in the bundled EOS-1D Instructions. For detailed information on how to use the software products and the restrictions that apply to those products, refer also to the Help and Readme files for the respective products.



: Marks information that should be read before use to prevent damage to the camera, camera malfunction, or problems that would interfere with the functioning of software and computer.



: Marks additional information that you will find helpful when using the camera or software.



: These sections provide brief descriptions of the Custom Function Settings for the respective camera functions. For more details, refer to "Custom Function Settings" in the EOS-1D Instructions.

Safety Precautions

Please read the safety precautions carefully before using this product. Ensure that you use the product correctly according to the procedures described in these instructions.

The following safety precautions are intended to instruct you in the safe and correct operation of the product and its accessories to prevent injuries or damage to yourself, other persons and property. Please read and ensure that you understand them before you proceed to the other sections of these instructions.

Warning

Do not play the supplied CD-ROM(s) in any CD-ROM Player that does not support data CD-ROMs. The extremely loud sound that may result from playing the CD-ROM(s) in an audio CD player (music player) could damage the speakers. It is also possible to suffer hearing losses from listening with headphones to the loud sounds of a data CD-ROM played on a music CD player.

Disclaimer

- While every effort has been made to ensure that the information contained in these instructions is accurate and complete, no liability can be accepted for any errors or omissions. Canon reserves the right to change the specifications of the hardware and software described herein at any time without prior notice.
- No part of these instructions may be reproduced, transmitted, transcribed, stored in a retrieval system, or translated into any language in any form, by any means, without the prior written permission of Canon.
- Canon makes no warranties for damages resulting from corrupted or lost data due to a mistaken operation or malfunction of the camera, the software, the CompactFlash™ cards (CF cards), personal computers, peripheral devices, or use of non-Canon CF cards.

Trademark Acknowledgments

- Canon and EOS are trademarks of Canon Inc.
- Adobe and Photoshop are trademarks of Adobe Systems Incorporated.
- CompactFlash is a trademark of SanDisk Corporation.
- IBM is a registered trademark of International Business Machines Corporation.
- Microsoft and Windows are registered trademarks or trademarks of Microsoft Corporation in the United States and/or other countries.
- Macintosh is a trademark of Apple Computer Inc., registered in the United States and other countries.
- QuickTime is a trademark of Apple Computer Inc.
- Other names and products not mentioned above may be registered trademarks or trademarks of their respective companies.

About the ZoomBrowser EX Software User Guide

A PDF-format Software Guide that provides detailed instructions for using ZoomBrowser EX is included on the EOS DIGITAL SOLUTION DISK. You will need Adobe Acrobat Reader to view the Software Guide. If you have not already installed Adobe Acrobat Reader on your computer, install it using the procedure below.

Installing Acrobat Reader

- 1 Load the EOS DIGITAL SOLUTION DISK into the CD-ROM drive.
- 2 From [My Computer], open the CD-ROM drive containing the SOLUTION DISK and double-click the following in sequence: [Readme] folder ► [English] folder ► [Acrobat] folder ► [Ar405eng].
- 3 Proceed with the installation as directed by the on-screen messages.

Viewing the ZoomBrowser EX Software User Guide

- 1 Load the EOS DIGITAL SOLUTION DISK into the CD-ROM drive.
→ The Installer panel appears automatically.
- 2 Click [Using the software].
- 3 Click [ZoomBrowser EX].
→ Acrobat Reader starts up and the [ZoomBrowser EX Software User Guide] appears.

About QuickTime

To save composite images made using PhotoStitch in the QuickTime VR format, you will need QuickTime 3.0 or later. If you have not already installed QuickTime 3.0 or later on your computer, install it using the procedure below.

- 1 Load the EOS DIGITAL SOLUTION DISK into the CD-ROM drive.
→ The Installer panel appears automatically.
- 2 Click [QuickTime 5.0 Installation].
- 3 Proceed with the installation as directed by the on-screen messages.

About the Software

This section briefly describes the main functions of the software provided on the bundled CD-ROM.

■ EOS DIGITAL SOLUTION DISK

TWAIN Driver

- This is a driver for Windows 98 SE and Windows 2000 that allows you to connect the EOS-1D to your computer using the interface cable and display the images stored on a CF card in the EOS-1D.
- Enables you to display, save and erase images.
- Allows you to process RAW images and then perform image processing.

WIA Driver

- This is a driver for Windows Me and Windows XP that allows you to connect the EOS-1D to your computer using the interface cable and that automatically starts the [Scanner and Camera Wizard] to download your images.
- It also allows you to copy camera images using standard file copying procedures in Windows Explorer (but it cannot upload computer files to the camera).

ZoomBrowser EX

- When you connect the EOS-1D to your computer with the interface cable, images on the CF card in the EOS-1D are displayed.
- This program displays downloaded images in lists and allow you to sort and organize them by content.
- This program can display images in order according to the shooting date.
- This program can start your email program* and send images as file attachments to it. Since the file size and compression rate can be controlled, you can reduce large image files to sizes small enough for easy transmission.

* The automatic start of email programs is supported by Windows and the email programs must be enabled as MAPI clients.

PhotoRecord

- This program permits you to add backgrounds and borders, as well as titles and comments, and print out the images. You can enjoy preparing prints of your images appearing as if they were pasted into a photo album. Naturally, you can also use it to make artistic single-image layouts.
- Allows you to make index prints using the images saved on your computer and on the camera.
- This program can output your original photo cards or labels (8-label sheets) to Card Photo Printer CP-10 (optional) connected to the computer by interface cable PIF-100 (optional).

RAW Image Converter

- This program processes RAW images that you shot on the EOS-1D and saved onto your computer. You can also use this program to save your images in popular formats such as TIFF (8 or 16 bits/channel) and JPEG.

PhotoStitch

- PhotoStitch provides an easy way to merge a series of overlapping images into a single, seamless panorama by automatically arranging the frames in order. You can use this feature to stitch your shots together into one complete 360° cylinder-shaped panorama image.

RemoteCapture

- RemoteCapture allows you to operate the EOS-1D remotely and download images to your computer. RemoteCapture also lets you take pictures using a timer shooting or interval timer shooting function, in addition to single-frame shooting.

■ Adobe Photoshop 5.0 LE DISK

Photoshop 5.0 LE

- This is a full-featured image retouching program equipped with a complete range of image processing functions. You can also use Photoshop 5.0 LE to start the TWAIN Driver.
- You can use this program with the WIA Driver to display and image-process the images saved on your computer.

* If you already have Photoshop 5.0 LE installed on your computer, you do not need to install it again.

* Explanations for the TWAIN Driver-compatible application in these instructions all use examples from Photoshop 5.0 LE.

Computer System Requirements

Computer	IBM PC/AT-compatible machine equipped with an OHCI-compatible IEEE1394 port	
OS	Windows 98 Second Edition Windows Me Windows 2000 Professional Windows XP (Home Edition/Professional) * Preinstalled versions (upgrades not supported)	
CPU	Windows 98 SE Windows Me Windows 2000	150 MHz Pentium or better
	Windows XP	300 MHz Pentium or better
RAM	Windows 98 SE Windows Me Windows 2000	Minimum 64 MB required, 128 MB or more recommended
	Windows XP	Minimum 128 MB required, 256 MB or more recommended
Interface	IEEE1394	
Hard disk space	TWAIN Driver 25 MB or more WIA Driver 25 MB or more ZoomBrowser EX 120 MB or more (Including the PhotoRecord printing program) PhotoStitch 40 MB or more RAW Image Converter 15 MB or more RemoteCapture 20 MB or more Adobe Photoshop 5.0 LE 40 MB or more	
Display	800 × 600 dots, 256 colors (8-bit color) or more required 1024 × 768 dots, 64,000 colors (16-bit color) or more recommended	

● A CD-ROM drive is required for software installation.



Installing the Software

This chapter describes the procedure for installing the software for EOS-1D and Photoshop 5.0 LE.

Installing the Software

- You must follow the procedure given below to install the software.
 1. EOS DIGITAL SOLUTION DISK
 2. Photoshop 5.0 LE
 3. Connect the camera and complete the installation.
 - ➔ When you connect the camera to your computer, the driver is automatically installed and driver installation ends. (On Windows 98 SE and Windows 2000, the TWAIN Driver is installed, and on Windows Me and Windows XP, the WIA Driver is installed.)
- ❗ Do not connect the camera to your computer before you have installed the software as this will prevent successful software installation.**

EOS DIGITAL SOLUTION DISK Installation

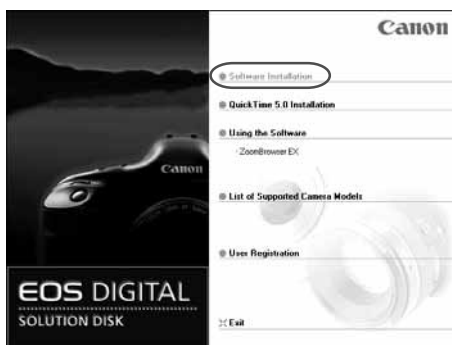
1 Start up your computer.

- Windows 2000 or Windows XP Professional users should log on with [Administrator] privileges.
- Close any programs that are running before you begin installing the software.

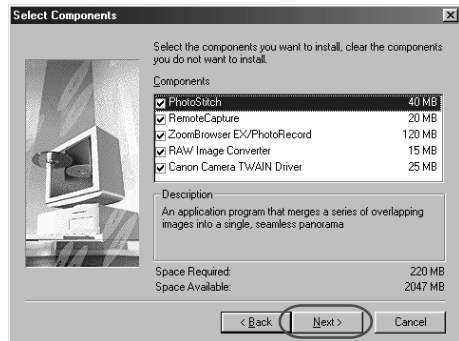
2 Load the SOLUTION DISK into the CD-ROM drive.

- ➔ The Installer panel automatically appears.
- If the Installer panel does not appear, double-click [My Computer] on desktop ► the icon for the CD-ROM drive containing the SOLUTION DISK ► [Setup] icon. (Windows XP users should click the [Start] button ► [My Computer], then double-click the icon for the CD-ROM drive containing the SOLUTION DISK ► [Setup] icon.)

3 Click [Software Installation].



- 4** Read all of the Software User License Agreement carefully. If you agree to the terms of the license, click the [Yes] button.
- 5** Select the folder in which the software will be installed and then click the [Next] button.
- 6** Select the software to be installed.
 - Click the checkboxes for the software to be installed and then click the [Next] button.



- 7** Select the EOS-1D.
 - Click the [EOS-1D] checkbox and then click the [Next] button.



- 8** Proceed with the installation as directed by the on-screen messages.
 - ➔ When installation ends, the Installer panel reappears.
- 9** Click the [Exit] button and restart your computer.

Installing Photoshop 5.0 LE

- You are required to enter the serial number during Photoshop 5.0 LE installation. The serial number is shown on the CD-ROM's label.
-

- 1 Load the Adobe Photoshop 5.0 LE CD-ROM into the CD-ROM drive.**
- 2 Double-click [My Computer] on the desktop to open.**
 - Windows XP users should click the [Start] button and then [My Computer].
- 3 Double-click [Photosle] CD-ROM ► [English] folder ► [Photosle] folder.**
- 4 Double-click the [Setup.exe] icon.**
- 5 Proceed with the installation as directed by the on-screen messages.**
 - For more information on the installation procedure, refer to the [Install] file in the [English] folder on the Photoshop 5.0 LE CD-ROM.

Complete the Installation of the TWAIN and WIA Drivers

- ❶ ● Before you connect the camera to your computer, you must install the TWAIN Driver or WIA Driver from the EOS DIGITAL SOLUTION DISK on your computer.
- Set the camera's Auto power off function to [Off] before you start installing the driver.
- You must not set the camera's main switch to <OFF> until installation ends.
- For the limitations of the WIA Driver, please click the [Start] button and select [Programs] ([All Programs] on Windows XP) ► [Canon Utilities] ► [EOS-1D WIA Driver] ► [WIA Driver Readme].

For Windows 98 SE Users:

- 1 Connect the camera to your computer correctly. (→2-2)
- 2 Set the camera's main switch to <ON>.
→ The [Creating driver information database] dialog box appears, followed shortly by the [Insert Disk] dialog box.
- 3 Click the [OK] button without loading the EOS DIGITAL SOLUTION DISK.



- The [Insert Disk] dialog box (details window) appears.

4 Select the drive browse destination.

- Click the [Browse] button, open the [Program Files] folder on the drive where you installed the software and select [Canon] folder ► [eos-1d twain] folder ► [cap_1d.cat]. Then click the [OK] button.



5 Click the [OK] button.

- ➔ Driver installation is completed.
- This installation is only performed the first time you connect the camera to your computer after installing the EOS DIGITAL SOLUTION DISK.
- When the message appears prompting you to restart your computer, restart your computer as directed by the message.

For Windows 2000, Windows Me and Windows XP Users:

1 Connect the camera to your computer correctly (→2-2).

2 Set the camera's main switch to <ON>.

- ➔ The [Found new hardware] dialog box appears and driver installation is completed.
- ➔ If you are using Windows Me, driver installation is completed without the dialog box being displayed.
- This automatic installation is only performed the first time you connect the camera to your computer after installing the EOS DIGITAL SOLUTION DISK.
- If you are using Windows Me or Windows XP, the dialog box listed below appears when installation ends. Click the [Cancel] button to close the displayed dialog box.
Windows Me: The [Scanner and Camera Wizard] dialog box appears.
Windows XP: The [EOS-1D] dialog box appears.
- When the message appears prompting you to restart your computer, restart your computer as directed by the message.

When you have problems with driver installation

If you have problems with driver installation, check the items listed below. If the [Add New Hardware Wizard] ([Found New Hardware Wizard] in Windows 2000) dialog box appears while you are checking these items, click the [Cancel] button and disconnect the camera from your computer. Then re-install the driver software.

(1) Does your computer comply with these requirements?

- The system has a built-in OHCI-compatible IEEE1394 port and it comes with Windows 98 SE, Windows Me, Windows 2000 or Windows XP preinstalled. (The IEEE1394 interface is not supported for systems not complying with the above conditions.)

(2) Is the camera connected correctly?

- See “Connecting the Camera to Your Computer” (→2-2) for more information.

(3) Are the camera and computer set up correctly for communication?

- Is the camera's main switch set to <ON>?
- Even when the camera's main switch is set to <ON>, operation of the Auto power off function will automatically switch the camera off. To prevent this, set the Auto power off to [Off]. (Refer to “Menu Settings” in the EOS-1D Instructions.)

(4) Is there sufficient charge left in the camera battery?

- When you connect your camera to a computer, you should use the DC Coupler Kit so that you can continue to use your camera regardless of battery level.

If you have checked that none of the above problems apply and you still have problems with the driver installation, refer to “Uninstalling the Driver” (→9-7) and perform the driver installation procedure once more from the beginning.

Please Register Your Camera!

We recommend you take a moment to register your camera, in order to receive further product information.

To proceed to the online User Registration page, simply click the [User Registration] button from the [EOS DIGITAL SOLUTION DISK].

If there is no response when you click the [User Registration] button, please double-click on the file “/SOFTWARE/INSTDATA/ENGLISH/REGIST.HTM” from Windows Explorer.



Getting Ready to Work with Images

This chapter explains how to connect the camera to your computer and how to use a card reader (third-party product).

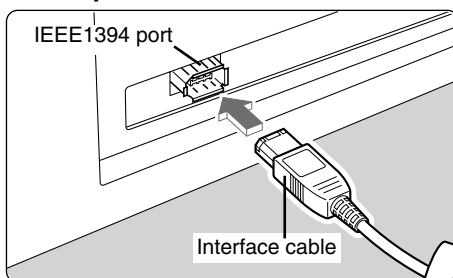
Connecting the Camera to Your Computer

Connect the EOS-1D to your computer with the interface cable so that they can communicate. You can connect the camera while your computer is running.

- When you connect the camera to your computer, be sure to follow the procedure below.
 - Never perform the following operations while the software installed from the SOLUTION DISK runs after connecting the camera to the computer as a communications error may occur.
 - Setting the camera's main switch to <OFF>
 - Opening the CF card slot cover
 - Disconnecting the interface cable, the power cord, or the AC adapter's plug
 - Removing the DC coupler or the battery
- Before you perform the operations above, be sure to end the software being used.

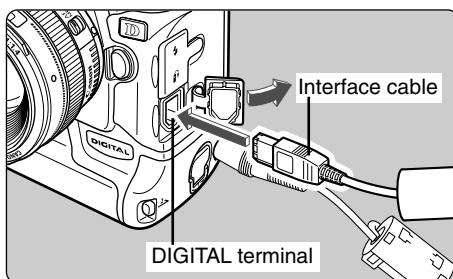
1 Plug the interface cable into the computer.

- Plug the cable into the IEEE1394 port on the computer.
- You can plug either end of the cable into the IEEE1394 port.
- The location of the port differs depending on your computer. Refer to the User's Manual for your computer for details.



2 Plug the interface cable into your camera.

- Open the cover and plug the cable into the camera's DIGITAL terminal.
- You can plug either end of the cable into the DIGITAL terminal.



3 Set the camera's main switch to <ON>.

- ➔ The camera can now communicate with your computer.
- Start up the software to be used.
- ➔ If you are using Windows Me, the [Scanner and Camera Wizard] dialog box appears, and if you are using Windows XP, the [EOS-1D] dialog box appears. Click the [Cancel] button to close the displayed dialog box.



- Use only the interface cable bundled with the camera to connect the camera to your computer.
- Push the plug firmly all the way into the socket. Loose connections can cause faults or malfunctions.
- Connect the camera to the computer directly using the interface cable. The camera and computer may not operate correctly if you connect them via a hub or if you connect to multiple IEEE1394 devices.
- Do not connect more than one camera to the same computer. The connections may not operate correctly.
- While the camera and your computer are communicating, the camera's LCD panel may blink and, if you are using the LCD monitor, the image on the monitor may flicker. This is not malfunction.
- If you leave the camera unused for approximately 5 minutes while it is connected to your computer, a confirmation message appears on the computer screen asking whether you wish to continue communicating with the camera. If you do not do anything, the connection to the camera is terminated after approximately 1 minute. (If you are using a household power source, no message is displayed and the connection is not terminated.) To re-establish the connection, press the shutter button down halfway or set the camera's main switch to <OFF> and then back to <ON>.

Refer to the EOS-1D Instructions provided with the camera for details.

- Do not put your computer to sleep while it is connected to the camera. If you do put your computer to sleep while it is connected to the camera, never disconnect the interface cable while your computer is still in sleep mode. Always wake your computer up before disconnecting the camera. On some types of computer, disconnecting the interface cable while your computer is in sleep mode could prevent the computer from waking up correctly. Refer to the computer User's Manual for more information on Sleep mode.



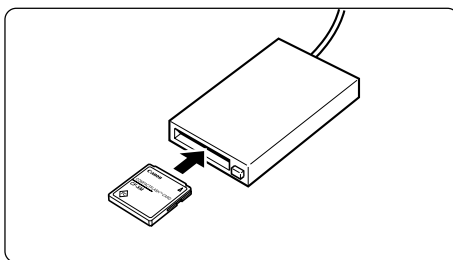
- When you connect your camera to a computer, you should use the DC Coupler Kit so that you can continue to use your camera regardless of battery level. It is recommended that you should set the camera's Auto power off function to [Off].
- If your computer has a 4-pin IEEE1394 port, purchase a separate third-party 4-pin to 6-pin interface cable.

Inserting a CF Card into Your Card Reader

To download images from a CF card directly onto your computer, remove the CF card from your camera and load it into a card reader (third-party product) connected to your computer.

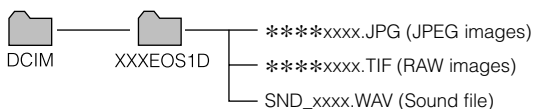
1 Remove the CF card from the camera.

2 Load the card into the card reader.



CF Card Folder Structure and File Names

The images on a CF card are placed in sub-folders named [XXXEOS1D], where the “XXX” represents a number from 100 to 999, within the [DCIM] folder.



- The “****” in the file names represent the factory-set characters that are unique to each camera.
- The “xxxx” in file names represent four-digit numbers.



For information on connecting the card reader to your computer, refer to the User's Manual provided with the card reader.



Working with Images in the TWAIN Driver

This chapter explains how to use the TWAIN Driver to display and save images stored on a CF card loaded in the camera and describes how to process RAW images and process captured images.

The TWAIN Driver is the driver software used for Windows 98 SE and Windows 2000.

Starting the TWAIN Driver

The TWAIN Driver is the driver software used for Windows 98 SE and Windows 2000 and is started from a TWAIN Driver-compatible application (such as Adobe Photoshop 5.0 LE). The descriptions given here use the bundled Photoshop 5.0 LE software as an example. If you are using TWAIN Driver-compatible application other than Photoshop 5.0 LE, refer to the User's Manuals provided with your software for information on setting up and using a TWAIN devices.

1 Start Photoshop 5.0 LE.

- Click the [Start] button and select [Programs] ► [Adobe] ► [Photoshop 5.0 Limited Edition] ► [Adobe Photoshop 5.0 Limited Edition].
➔ Photoshop 5.0 LE starts up.

2 Select [File] menu ► [Import] ► [Select TWAIN_32 Source].

- ➔ The [Select Source] dialog box appears.

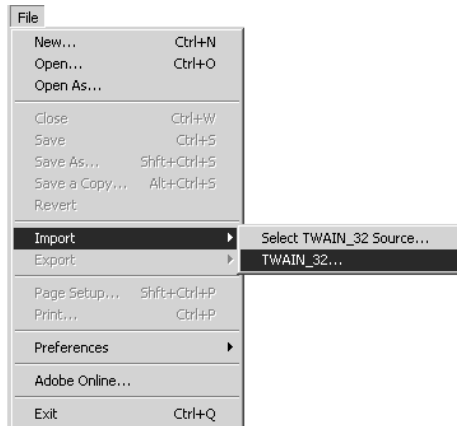


3 Select [Canon EOS-1D] and click the [Select] button.



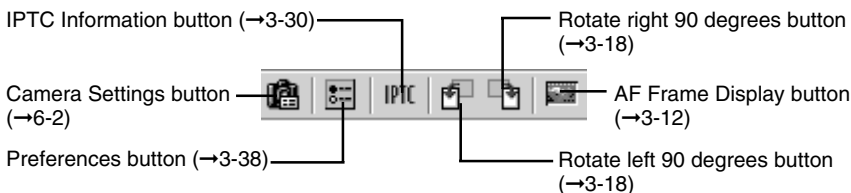
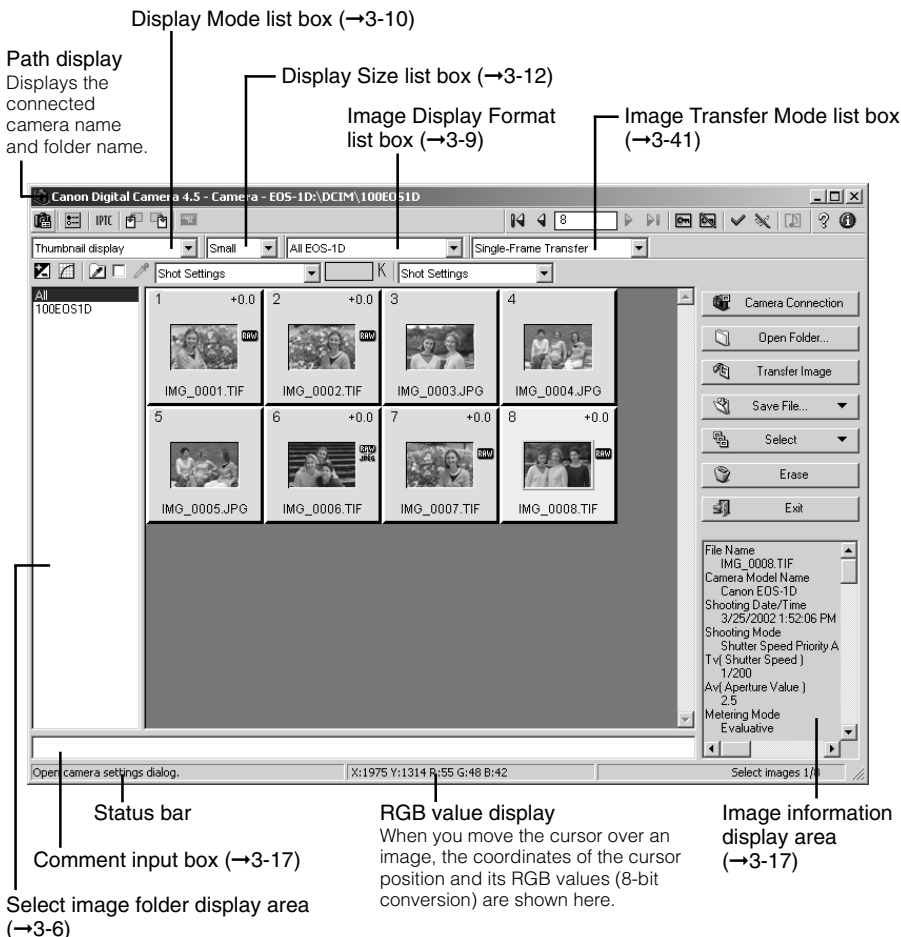
4 Select [File] menu ► [Import] ► [TWAIN_32].

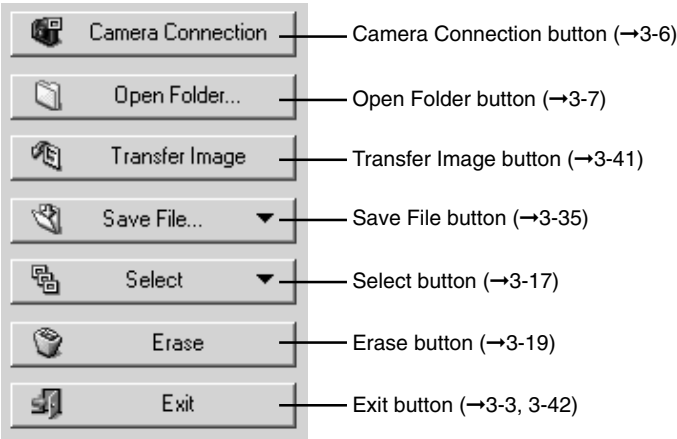
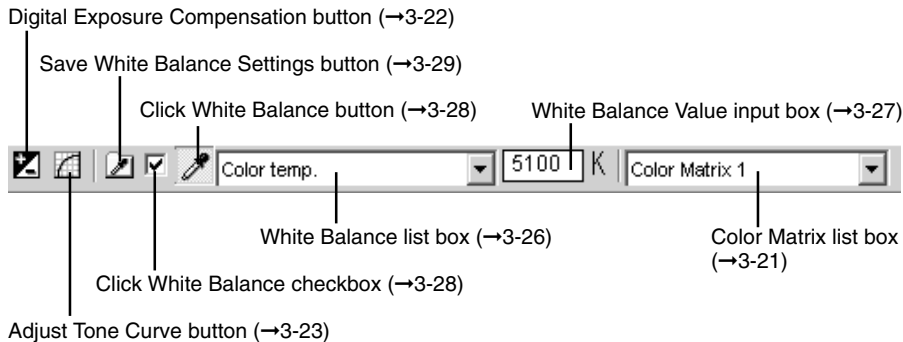
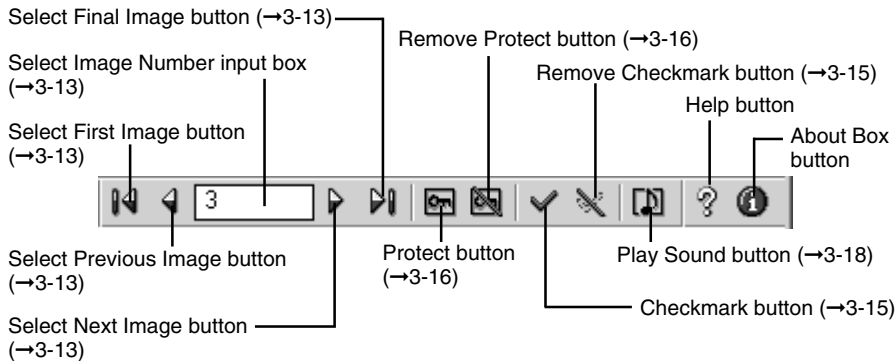
- ➔ The TWAIN Driver starts up.
- ➔ When you start the TWAIN Driver, the main window opens. In the main window, you can display and process the images saved on the CF card in the camera.
- To close the TWAIN Driver, click the [Exit] button in the main window.



- Steps 2 and 3 are not required for every operation. Only perform these steps the first time you start the driver software following installation, or when you change the setting to another TWAIN Driver.
- To modify images from Photoshop 5.0 LE when you are using the WIA Driver (Windows Me or Windows XP), use the WIA TWAIN to modify the images (see "Downloading with the WIA TWAIN" (→4-5)).

TWAIN Driver main window





Displaying Images

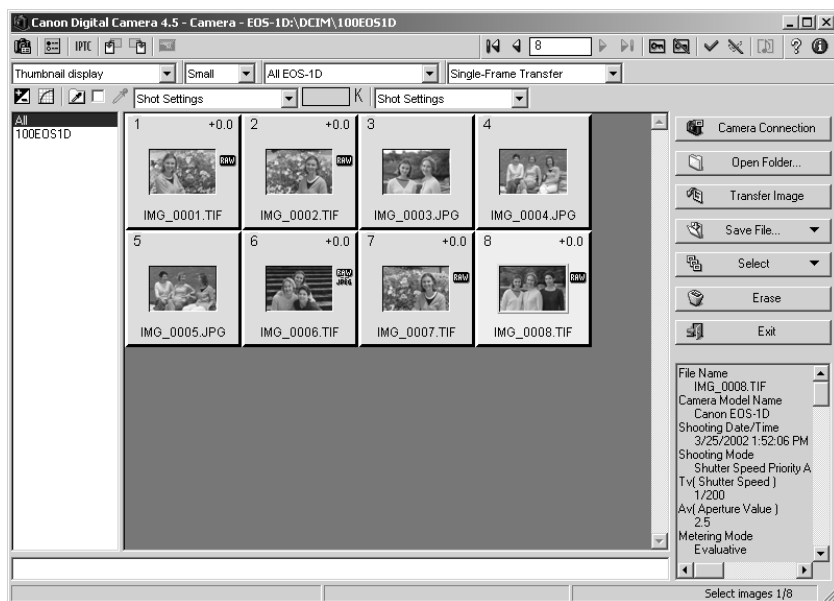
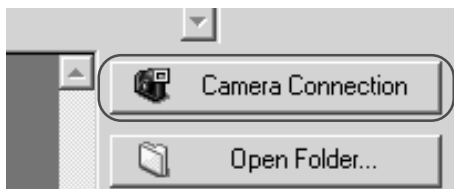
This section describes how to display images stored on a CF card.

You can display images via the interface cable while the CF card is still in the camera, or by loading the CF card into a third party card reader.

Displaying Images by Connecting the Camera to Your Computer

1 Click the [Camera Connection] button.

- ➔ After a short delay, the images appear.
- The highest numbered image in the highest numbered folder is automatically selected and displayed.



2 Select a folder that contains images.

- When you click a folder name in the select image folder display area, the images in that folder are displayed. Click [All] to display all the images on the CF card.



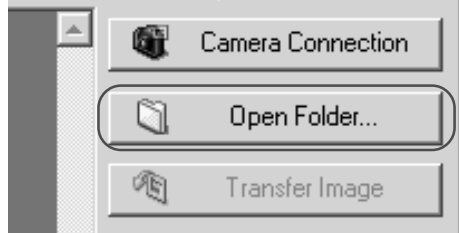
- Because RAW images are processed before being displayed, there is a short delay before the images appear.
- You can specify which image is selected first when the [Camera Connection] button is clicked. (→3-38)

Displaying Images by Connecting a Card Reader

Remove the CF card from the camera and load it into the card reader. (→2-4)

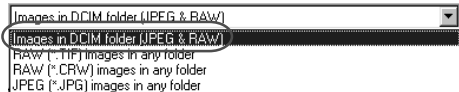
1 Click the [Open Folder] button.

- The [Select Image Folder] dialog box appears.



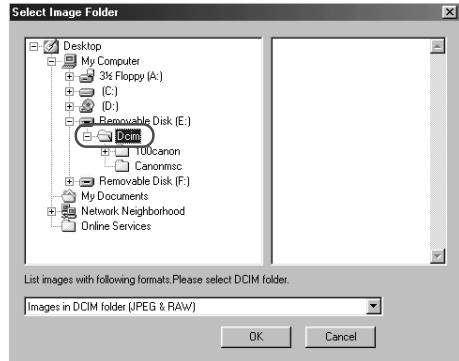
2 Select the image format.

- Select [Images in DCIM folder (JPEG & RAW)].



3 Select a folder.

- Open the drive for the CF card containing images shot on the EOS-1D and select the [DCIM (or Dcim)] folder.



4 Click the [OK] button.

- The images shot on the EOS-1D in the selected folder are displayed.

Image Display Formats

[Images in DCIM folder (JPEG&RAW)]

Use this option to display the JPEG and RAW images saved in the DCIM folder.

In step 3, you can also select any folder in the DCIM folder and display only the images saved in that folder.

If you display images in this format, do not rename any of the folders on the CF card.

Renaming folders such as the DCIM folder or 100EOS1D folder may make it impossible to display the images in those folders.

[RAW (*.TIF) images in any folder]

Use this option to display only the TIFF-format RAW images (EOS-1D etc.) saved in the selected folder. Select this format in step 2, then select a folder containing TIFF-format RAW images.

[RAW (*.CRW) images in any folder]

Use this option to display only the CRW-format RAW images (EOS D60 and D30 etc.) saved in the selected folder. Select this format in step 2, then select a folder containing CRW-format RAW images.

[JPEG (*.JPG) images in any folder]

Use this option to display only the JPEG images saved in the selected folder. Select this format in step 2, then select a folder containing JPEG images.

Depending on the type of device that originally created the image, you may not be able to display some JPEG images.



To save the images on a CF card to your computer or to another media, you must select and then save the displayed images (→3-35) or copy the DCIM folder to your computer or to the target media.



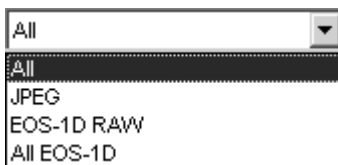
- Because RAW images are processed before being displayed, there is a short delay before the images appear.
- To display the images saved on your computer's hard disk, use the procedure described in "Displaying Images by Connecting a Card Reader" (→3-7).

Selecting the Image Display Format

The format options for image display are [All], [JPEG], [EOS-1D RAW] and [All EOS-1D]. Specifying one of these options allows you to display only images in the selected format.

Click the [Image Display Format] list box and select the image display format.

➔ Only images in the selected display format are displayed.



[All]

All the images saved in the selected folder are displayed.

[JPEG]

Only JPEG images are displayed. Note that JPEG images of the EOS-1D RAW+JPEG format are not displayed.

[EOS-1D RAW]

Only RAW images shot on the EOS-1D are displayed. When images are in the RAW+JPEG format, only the RAW image is displayed.

[All EOS-1D]

Only images shot on the EOS-1D in the RAW and JPEG formats are displayed. RAW+JPEG format images are displayed as RAW images.



You may be unable to correctly display images that were shot on cameras other than the EOS-1D or that were modified or renamed on a computer after being captured.



If the selected folder or the CF card in the connected camera contains any images (including RAW or JPEG images) that were shot on a Canon camera other than an EOS-1D, the image display format for those images is displayed in the list box.

Selecting the Display Mode and Display Size

The available display modes are [Thumbnail display], [Preview] and [JPEG Preview]. You can select [Large], [Middle], or [Small] as the display size for each display mode.

Selecting the Display Mode

Click the [Display Mode] list box and select the mode.

- ➔ The images are displayed in the selected display mode.



[Thumbnail display]

This shows multiple images arranged in sequence. The information shown below is also displayed for the images.



Transferred image mark (→3-42)
This mark is attached to images that have been transferred to the TWAIN Driver-compatible application.

Sound recording mark (→3-18)
This mark is displayed for images for which sound was recorded with the EOS-1D.

Protect mark (→3-16)
This mark is attached to protected images.

Display number
Numbers are assigned sequentially to the displayed images starting with the first image.

Digital exposure compensation (→3-22)

Recording format
The [RAW] symbol is displayed for RAW images. The [RAW+JPEG] symbol is displayed for RAW+JPEG images. No symbol is shown for JPEG images.

Checkmark (→3-15)

File name or shooting date/time
The item selected in [Image Lower Display Item] list box in the [Preferences] dialog box (→3-38) is displayed.



When you start the TWAIN Driver, images are always shown in the [Thumbnail display] mode.

[Preview]

The selected image is displayed as a single image.

**[JPEG Preview]**

JPEG image is displayed.

When you select the RAW image, the JPEG image for the thumbnail display is shown.

When you select the RAW+JPEG image, the JPEG image is shown.



Checking the AF Point

The AF point used when the shot was taken can be displayed.

1 Select [Preview] or [JPEG Preview] from the [Display Mode] list box.

- See “Selecting the Display Mode” (→3-10) for information on how to select a display mode.

2 Click the [AF Frame Display] button.

- ➔ The EOS-1D AF point used when the shot was taken is displayed.
- Click the button again to hide the AF point.
- For images taken with One-Shot AF, the focused AF point is displayed. When the shot was taken with automatic AF point selection, multiple focused AF points might be displayed.
- For images shot with AI Servo AF, the selected AF point is displayed.



Selecting the Display Size

Click the [Display Size] list box and select the display size.

- ➔ The image is displayed in the selected display size.



In the [Preview] mode, the available image sizes are [Large] (100%), [Middle] (50%) and [Small] (25%).

Selecting Images

Selecting Images with the Mouse

Position the mouse cursor over the image and click the left mouse button.

- To select multiple images at random, hold down the <Ctrl> key and select the images.
- To select consecutive images, select the first image and then hold down the <Shift> key and select the last image.
- ➔ The frame around the selected image changes color.



Selecting Images from the Control Panel

You can also select images in the image selection control panel.



: **[Select First Image] button**

Selects the first thumbnail image displayed.



: **[Select Previous Image] button**

Selects the image before the currently selected image.



: **[Select Image Number] input box**

Selects the image with the specified number. You can enter a number between 1 and 9999. Enter the number and press the <Enter> key.



: **[Select Next Image] button**

Selects the next image.



: **[Select Final Image] button**

Selects the last thumbnail image displayed.



- If you position the mouse cursor over an image and double-click, the image is transferred to Photoshop 5.0 LE (TWAIN Driver-compatible application).
- To select an image using the keyboard, use the arrow keys (↑ ← → ↓) to move to the image and then press the spacebar.

Working with Selected Images

Operations that Can Be Used with Images

The table below lists the operations available with the TWAIN Driver. When a JPEG image is selected, the unavailable operations are shown grayed out. When operations such as [Rotate image] are specified for a RAW image recorded in the RAW+JPEG formats, the operations are also applied to the JPEG image recorded at the same time. However parameters that can only be used with RAW images, such as [Color Matrix], are not applied.

Image recording formats and image processing options

Operations	RAW	JPEG	Description
Checkmark	✓	✓	Used for selecting specific images.
Protect	✓	✓	Protects the image so it cannot be erased.
Erase	✓	✓	Erases unprotected images.
AF Frame Display	✓	✓	Displays the focused or the used AF point.
Play Sound	✓	✓	Plays the sound recorded by the camera.
Comment input*	✓	✓	Attaches a brief comment to each frame.
Transfer Image	✓	✓	Transfers images to applications such as Photoshop 5.0 LE.
Save File	✓	✓	Saves an image to your computer, etc.
Rotate image	✓	✓	Rotates the image by 90-degree unit.
Color Matrix	✓	—	Sets film-equivalent characteristics or color range characteristics.
Digital Exposure Compensation	✓	—	Adjusts the brightness.
Adjust Tone Curve	✓	—	Adjusts the brightness and color saturation.
White Balance	✓	—	Adjusts the white balance.
Click White Balance	✓	—	Automatically adjusts the white balance.
IPTC Information	✓	—	Sets the IPTC information details.

- Operations marked with an asterisk (*) cannot be used with images saved on a CF card in the camera and are shown grayed out in the control panel. Save such images to your computer or use the operation via a card reader.



The sharpness for RAW images can be specified in the [Preferences] dialog box (→3-39).

Attaching Checkmarks to Selected Images

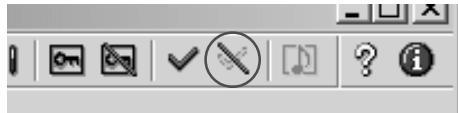
You can use this function to attach checkmarks to your images for quick and easy image selection. Note that attaching a checkmark to an image does not protect the image.

Click the [Checkmark] button.



➔ When you attach a checkmark to an image, the [✓] appears.

- Clicking the [Remove Checkmark] button removes the [✓] and cancels the checkmark setting.



The checkmark is removed when you quit the TWAIN Driver.

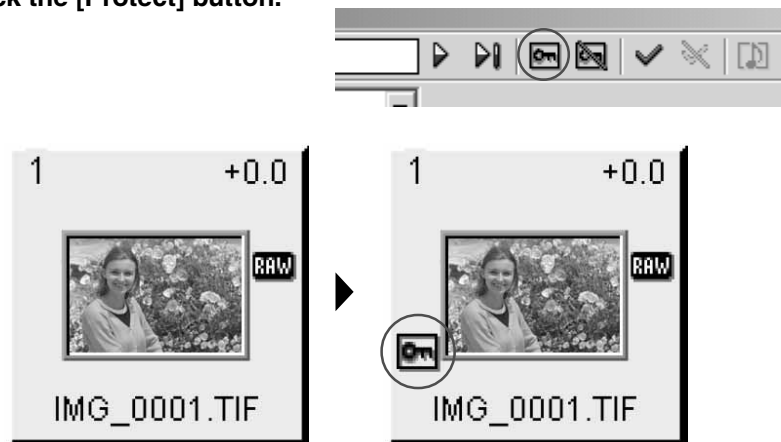


A range of operations is also available by selecting the image, pressing the right mouse button and selecting an option from the menu that appears.

Protecting Images

You can protect important images to prevent them from being accidentally erased.

Click the [Protect] button.



→ The image is protected, and the [Protect] icon is displayed.

- Clicking the [Remove Protect] button clears the [Protect] icon and removes the protection.



- When multiple images are selected, all the selected images are protected.
- The [Protect] icon is automatically displayed for images that were protected on the camera.
- Protection only prevents images from being erased. Other types of image processing can still be specified for protected images.
- A range of operations is also available by selecting the image, pressing the right mouse button and selecting an option from the menu that appears.

Selecting Images by Condition

This feature allows you to select multiple images for which a condition has been set (e.g. checkmarked or protected images) in a single operation. You can also select all the displayed images.

Click the [Select] button and select the condition from the menu that appears.

- ➔ Only images that meet the condition are selected.

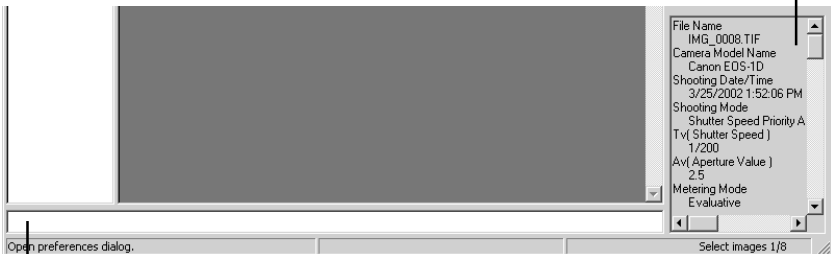


Checking the Image Information

Shooting information is recorded when images are taken. You can check the shooting information by selecting the image. Also, you can copy shooting information to paste it into another application, and you can add a comment.

Image information display area

- Displays information such as the file name, camera model name and shooting data. The number of items displayed differs depending on the camera settings.
- Use the scroll buttons to display parts of the information that are not visible.
- When you select multiple images, the information from the image selected last is displayed.
- You can copy the information as text data and paste it into another application.



Comment input box

You can use this box to type in a comment up to 120 characters long.
Type in your comment and press the <Enter> key.



When the shot was taken using Color Matrix 4

Images photographed using color matrix 4 must be transferred to Photoshop 5.0 LE (→3-41) so that settings such as the chromaticity can be adjusted. The color matrix information is shown in the Image information display area.

Rotating Images

Use the procedure below to rotate a selected image by 90-degree unit left or right.

Rotate the image.

- To rotate the image right (clockwise), click the [Rotate right 90 degrees] button.
- To rotate the image left (counterclockwise), click the [Rotate left 90 degrees] button.
- ➔ The image rotates 90 degrees in the selected direction.



- When multiple images are selected, all the selected images are rotated.
- A range of operations is also available by selecting the image, pressing the right mouse button and selecting an option from the menu that appears.

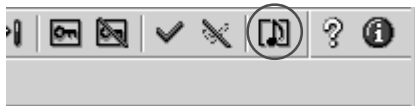
Playing Back Sound

Use the procedure below to play back sound that was recorded with an image. The sound recording mark is displayed for images for which sound was recorded.

1

Select an image with displayed, and click the [Play Sound] button.

- ➔ The [Audio Note] dialog box appears.



2

Adjust the sound with the buttons and Slider.



: [Play] button

Plays back the recorded sound.



: [Pause] button

Pauses sound playback. Click the [Play] button to resume.



: [Stop] button

Stops sound playback.



: Slider

Indicates the sound playback position.



Erasing Images

Use the procedure below to erase unwanted images from a CF card or your computer.

1 Click the [Erase] button.

→ The [Canon Digital Camera] dialog box appears.



2 Click the [OK] button.

→ The image is erased.



- Erased images cannot be restored. Check carefully before erasing images.
- Protect important images to prevent them from being accidentally erased.
- If you click the [Erase] button when multiple images are selected, all the selected images are erased. Take particular care when you have just finished a task involving the selection of multiple images.



A range of operations is also available by selecting the image, pressing the right mouse button and selecting an option from the menu that appears.

Processing RAW Images

RAW images are processed so that they are optimized for their intended purpose. As well as providing the same color matrix and white balance settings as the EOS-1D, the TWAIN Driver allows you to specify digital exposure compensation, tone curve adjustment and click white balance as additional processing parameters.

This image processing does not involve working with the original RAW images. It applies virtual parameters to RAW images temporarily downloaded to the computer.

Accordingly, you can redo the processing repeatedly with different parameters.

You can also change the modified parameters back to the settings used when the shot was taken.

1 Process the RAW image.

- Set the image display format to [EOS-1D RAW]. (→3-9)
- Select the RAW image to be processed. (→3-13)
- It is recommended that you use the [Preview] mode to check the processed image. (→3-11)

2 Change the parameter settings.

- Change parameter settings. See the pages that follow for information on how to set the parameters.
 - ➔ The image is reprocessed using the modified parameters and the result is shown.
- Because the parameters set during shooting and the modified parameters for the original RAW image are updated in realtime.



3 Save or transfer the image in a commonly used format.

- You can save an image as a JPEG or TIFF format by clicking the [Save File] button and selecting [Convert and save in file] from the menu that appears (→3-35).
- Clicking the [Transfer Image] button transfers the image to Photoshop 5.0 LE. (→3-41) You can specify the number of bits for colors when the image is transferred in the [RAW Image Processing settings] tab sheet in the [Preferences] dialog box (→3-39).



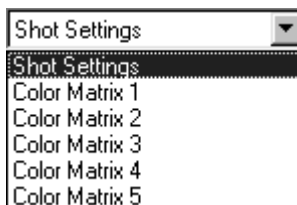
- When multiple images are selected, the specified processing is applied to all the RAW images selected.
- The sharpness for RAW images can be specified in the [Preferences] dialog box (→3-39).

Selecting the Color Matrix

Use the procedure below to select the film-equivalent hue, chroma and color range (the range of colors that can be reproduced).

Select the color matrix from the [Color Matrix] list box.

- ➔ The resulting image appears in Preview mode.



Color Matrix	Settings
Shot Settings	Select this option to apply the color matrix used when the shot was taken.
Color Matrix 1	Reproduces the hues and chroma for natural color tones. Select this option to show the subject's natural color tones.
Color Matrix 2	Reproduces hues and chroma suited to portraits. Select this option to reproduce beautifully natural skin tones.
Color Matrix 3	Reproduces hues and chroma similar to those in high-chroma color slide film. Select this option to reproduce clear and vivid color tones.
Color Matrix 4	Processes images so that the color space is compatible with Adobe RGB. Select this option when you intend to convert the image profile to Adobe RGB or you want to make fine adjustments to the color chroma. If you intend to convert the image profile, transfer the image to a software application with a conversion function and specify Adobe RGB (this option does not append an ICC profile to the image). In sRGB environments, because the color chroma of the image is low, you should transfer the image to an application such as Photoshop 5.0 LE and adjust the chroma.
Color Matrix 5	Processed as low-chroma image. Effective for making color tone moderate.



When you intend to transfer an image to Photoshop 5.0 LE using Color Matrix 4, it is recommended that you should set the [Transferring images to application] option in the [RAW Image Processing settings] tab sheet in the [Preferences] dialog box (→3-39) to [16 bits per color channel] so that the transferred image is suitable for image processing.

Correcting the Brightness (Digital Exposure Compensation)

You can correct the brightness of an image through the equivalent of ± 2 stops in 0.1-stop increments.

1 Click the [Digital Exposure Compensation] button.

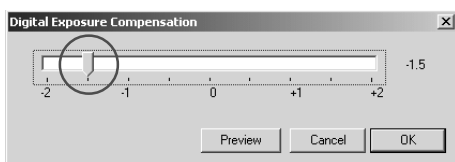
- The [Digital Exposure Compensation] dialog box appears.



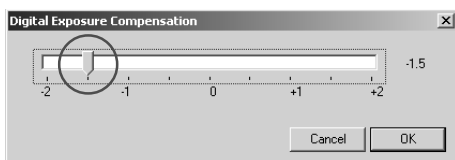
2 Correct the image brightness.

- When you drag the slider left or right with the mouse, the image brightness can be adjusted.
- The [Preview] button appears in the Preview mode. When you click the [Preview] button, the image brightness changes according to the value of the new slider position.

The [Digital Exposure Compensation] dialog box in the Preview mode



The [Digital Exposure Compensation] dialog box in the Thumbnail display mode



3 Click the [OK] button.

- The corrected value is applied to the image and the [Digital Exposure Compensation] dialog box closes.
- The corrected value is displayed with the corrected image.



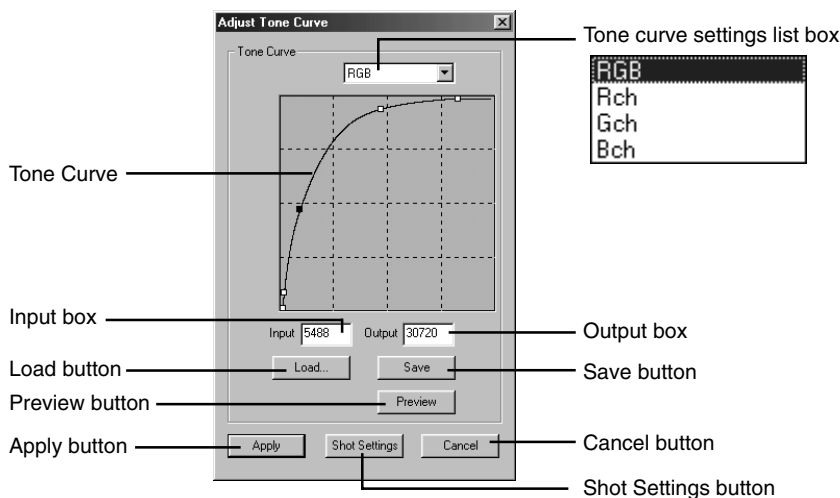
Adjusting the Color and Brightness (Adjust Tone Curve)

You can use the tone curve to adjust the colors and brightness.

You can also save and load the adjusted tone curve on your computer as tone curve data. In addition, you can register the tone curve data saved on your computer as parameters in the camera. (→6-24)

1 Click the [Adjust Tone Curve] button.

→ The [Adjust Tone Curve] dialog box appears.



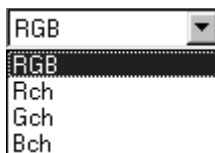
2 From the [Tone curve settings] list box, select the channel you want to use.

RGB: The same settings are used for all RGB channels.

Rch: The settings are used for the red channel.

Gch: The settings are used for the green channel.

Bch: The settings are used for the blue channel.



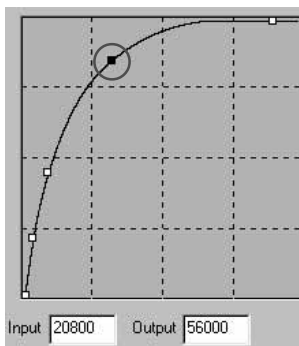
3 Adjust the tone curve.

- Position the mouse cursor over one of the 4 points ☐ on the tone curve, and drag the point to the desired location to adjust the tone curve.

Horizontal axis: Input level

Vertical axis: Output level

- Adjusted points are shown with ☒.
- You can also set the points being adjusted by entering values directly into the [Input] and [Output] boxes.



4 Press the [Preview] button.

→ The adjusted image is shown in the Preview window.

5 Check the settings on the image.

- Check the adjusted image shown in the Preview window and repeat steps 3 and 4 to make further adjustments.
- Clicking the [Shot Settings] button restores the settings to the values used when the shot was taken.
- Clicking the [Save] button saves the adjusted tone curve on your computer. Select the destination folder and then save the tone curve data. You can then register the saved tone curve on the camera using parameter setting. (→6-24)
- You can load the tone curve data saved on your computer by clicking the [Load] button.

6 Click the [Apply] button.

- This applies the adjusted tone curve to the image and closes the [Adjust Tone Curve] dialog box to end the procedure.



- When the [Linear] checkbox is clicked in the [RAW Image Processing settings] tab sheet in the [Preferences] dialog box, tone curve adjustment cannot be performed. (→3-39)
- Once you have adjusted the tone curve for one of the channels (R, G or B), you can then apply the adjusted settings to all the channels by selecting [RGB] in the tone curve settings list box.
- **Windows/Macintosh compatibility for tone curve data**
Tone curve data saved on your computer is compatible with RAW Image Converter, the Windows TWAIN Driver, and the Macintosh Plug-In Module.

Tone Curve

A tone curve shows the brightness and color saturation for the original image (input) and the adjusted image (output) in the form of a line graph. You can use the tone curve to adjust the image brightness and color saturation values that were set by the camera when the shot was taken.

Also, by using the tone curve to adjust an image, you can tailor the image to the particular color reproduction characteristics of your monitor or printer so that you obtain the most faithful color reproduction.

The tone curve adjustment options include [RGB], which adjusts the input and output for the entire image in a single operation, as well as the [Rch], [Gch] and [Bch] settings that adjust each color individually. You can use the tone curve settings list box to switch between the different channels as you make your adjustments.

The horizontal axis shows the brightness and color saturation for the unadjusted (input) image, with the left-hand end indicating shadow (darker areas of the image) and the right-hand end indicating highlights (brighter areas of the image).

The vertical axis shows the brightness and color saturation for the adjusted (output) image, with the lower end indicating shadow and the upper end indicating highlights.

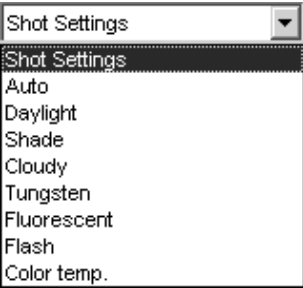
Adjusting the White Balance

You can adjust the white balance in your RAW images.
You can also save the adjusted white balance on your computer as white balance data.
(→3-29) In addition, you can register the white balance data saved on your computer as personal white balance data in the camera. (→6-30)

Select the White Balance

Select the white balance from the [White Balance] list box.

- The table below shows the 9 available white balance settings.



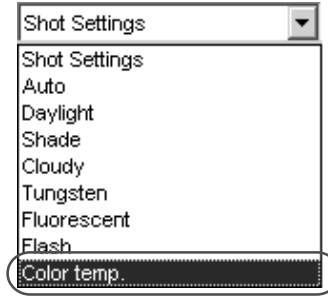
White Balance	Details	Color temp./K (Kelvin)
Shot Settings	Select this option to apply the white balance setting used when the shot was taken.	—
Auto	The TWAIN Driver automatically adjusts the white balance	Approx. 3000 to 7000
Daylight	Select this setting for shots taken outdoors in sunny weather.	Approx. 5200
Shade	Select this setting for shots taken outdoors in shade.	Approx. 7000
Cloudy	Select this setting for shots taken outdoors in cloudy weather or in shade, at dusk and for shots of sunsets.	Approx. 6000
Tungsten	Select this setting for shots taken in incandescent lighting.	Approx. 3200
Fluorescent	Select this setting for shots taken in fluorescent white lighting.	Approx. 4000
Flash	Select this setting for shots taken using a flash.	Approx. 5600
Color temp.	Select this option to directly set a value between 2800K and 10000K (in 100K increments) as the white balance color temperature. (→3-27)	Approx. 2800 to 10000

➡ The adjusted image appears.

Setting the Color Temperature

You can set the white balance color temperature to a value between 2800K and 10000K (in 100K increments).

1 Select [Color temp] from the [White Balance] list box.



2 Enter a color temperature.

- Enter the color temperature in the [White Balance Value] input box.
- You can enter values between 2800K and 10000K (in 100K increments)



3 Press the <Enter> key.

➔ The adjusted image appears.

Click White Balance Function

This function allows you to automatically adjust the white balance simply by clicking a point in a white part of the image.

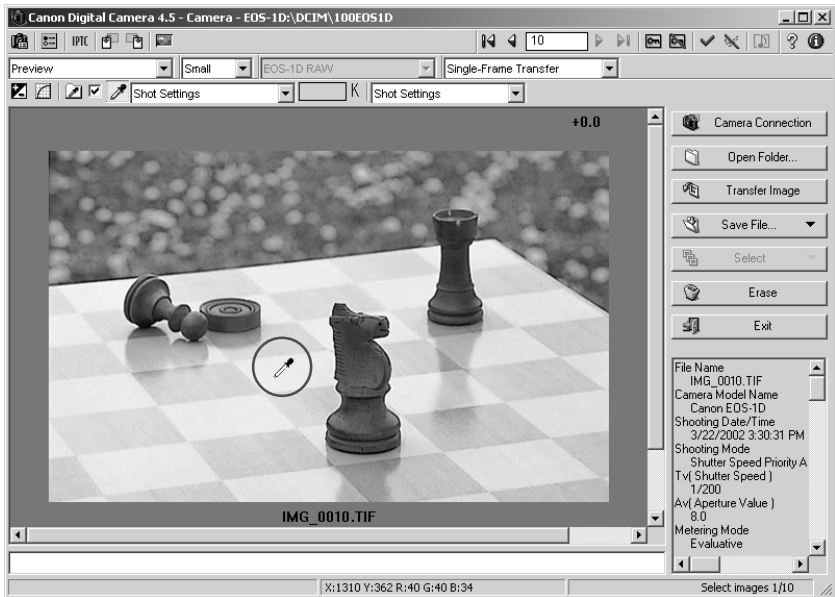
1 Click the [Click White Balance] checkbox.

- ➔ The [Click White Balance] button is now enabled.



2 Select a white area.

- When you move the cursor over the image, it changes to the shape of a filler.
- Click in a white area in the image.



- ➔ The white balance is adjusted so that the area clicked appears white and the result is displayed.
- To adjust the white balance using a different location, click the [Click White Balance] button again.
 - To end the Click White Balance procedure, click the checkbox again to clear the box and end the procedure.

Saving the White Balance

You can save the adjusted white balance settings on your computer as white balance data. You can then register the saved white balance data on your camera as personal white balance settings. (→6-30)

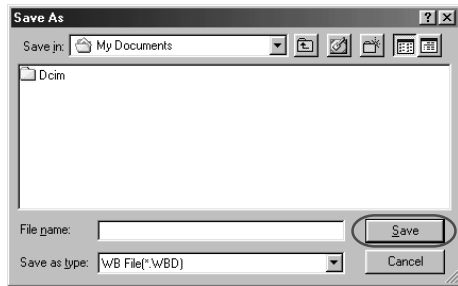
1 Click the [Save White Balance Settings] button.

→ The [Save As] dialog box appears.



2 Give the settings a name and click the [Save] button.

- Select the destination folder and then save the white balance data.
- You can also register the saved white balance data as a personal white balance on the camera. (→6-30)



Windows/Macintosh white balance data compatibility

White balance data saved on your computer is compatible with RAW Image Converter, the Windows TWAIN Driver, and the Macintosh Plug-In Module.

Setting the IPTC Information

IPTC stands for International Press Telecommunications Council and refers to a standard for communications and information exchange tags attached to images. The standard was established by newspaper and communications companies to allow problem-free transmission of images.

The IPTC tags can be attached to the RAW images taken with an EOS-1D. The owner's name and the date/time data is automatically included in the IPTC information as part of the data specified in the camera setup functions settings in the [Basic Settings] tab sheet in the [Camera Settings] dialog box. (→6-4) The specified IPTC information can also be saved or viewed on your computer.

1 Click the [IPTC Information] button.

➔ The [IPTC information] dialog box appears.



2 Select an item and specify the information.

- Click the desired IPTC information tab to display the tab sheet.
- Enter the information and click the <Enter> key.
- If multiple images are selected, use the [<Previous] and [Next>] buttons to switch between images.
- After using the [<Previous] and [Next>] buttons to switch between images, you can copy the IPTC information entered for the previous image by clicking the [Go Back] button.
- Click the [Clear] button to clear all the settings.

3 Click the [Save] button.

- ➔ The specified IPTC information is applied to the image.
- Clicking the [Save As] button saves the specified IPTC information on your computer.
- Click the [Read] button to read the IPTC information saved on your computer.

4 Click the [OK] button.

- ➔ The specified IPTC information is applied to the image, the [IPTC information] dialog box closes and the procedure ends.

[IPTC-1] tab sheet [IPTC-2] tab sheet [IPTC-3] tab sheet

IPTC information

IPTC-1 IPTC-2 IPTC-3

1 — Title

2 — Sender's City

3 — Photo No.

4 — Caption

5 — Caption Creator

6 — Photographer

7 — Photographer's Title

Read

Save As...

Clear

<Previous

Next>

2/5

Go Back

Save

OK(D)

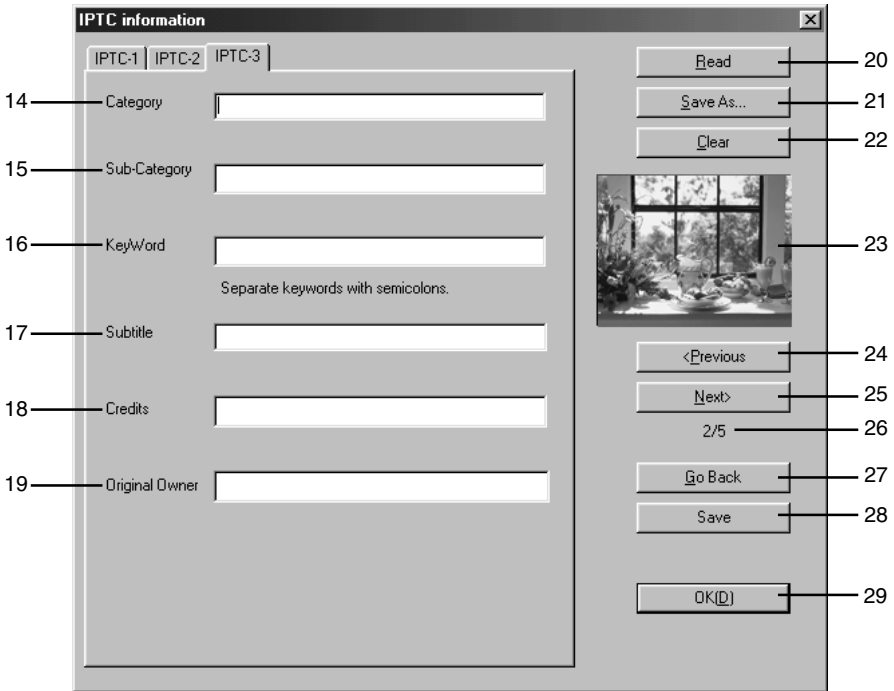
● **The settings you can specify in the [IPTC-1] tab sheet are described below.**

- 1 Enter an image title. You can enter up to 64 characters.
- 2 Enter the location from which the image is sent. You can enter up to 32 characters.
- 3 Type in a number or code designated by the company sending the image. You can enter up to 32 characters.
- 4 Type in a description of the photographed image. You can enter up to 2000 characters.
- 5 Type in the name of the person who wrote the caption. You can enter up to 32 characters.
- 6 Type in the photographer's name. You can enter up to 32 characters.
When the name of the camera owner is specified (→6-4), this name is entered automatically.
- 7 Type in the photographer's title. You can enter up to 32 characters.

● **The settings you can specify in the [IPTC-2] tab sheet are described below.**

- 8 Enter a service ID up to 10 characters long.
- 9 Select the appropriate priority level from the list box. (1: Highest Priority, 5: Normal, or 8: Low Priority)

- 10 Type in any instructions required for editing. You can enter up to 256 characters.
- 11 The date on which the image was photographed is automatically entered.
- 12 The time at which the image was photographed is automatically entered.
- 13 Enter the name of the device used to create the image data. You can enter up to 32 characters.



● **The settings you can specify in the [IPTC-3] tab sheet are described below.**

- 14 Enter the image type. Image types can be designated for each company. You can enter up to 3 characters.
- 15 Enter additional category details. You can enter up to 32 characters.
- 16 Enter a search keyword for each company. You can enter up to 32 characters.
- 17 Enter the image subtitle. You can enter up to 256 characters.
- 18 Enter the credits for a photographed image. You can enter up to 32 characters.
- 19 Enter the original owner of the image. You can enter up to 32 characters.

● **The buttons listed below are displayed in each of the tab sheets. They function in the same way in each sheet.**

- 20 Reads IPTC information settings saved on your computer.
- 21 Saves the current IPTC information settings on your computer.
Select the IPTC information destination folder and then save the IPTC information.
- 22 Clears the IPTC information. This button also clears the information in the tab sheets not currently shown.
- 23 Displays the image thumbnails.
- 24 When multiple images are selected, this button displays the IPTC information for the previous image.
- 25 When multiple images are selected, this button displays the IPTC information for the next image.
- 26 Shows the sequential position of the displayed image and the total number of frames.
- 27 Copies the IPTC information values entered before the [<Previous] or [Next>] button was clicked.
- 28 Applies the specified IPTC information to the image.
- 29 Applies the specified IPTC information to the image, closes the [IPTC information] dialog box and ends the procedure.



Windows/Macintosh compatibility for IPTC settings data

IPTC settings saved on your computer are compatible with RAW Image Converter, the Windows TWAIN Driver, and the Macintosh Plug-In Module.

Saving Images

This section explains how to use the interface cable to save images stored on a CF card in your camera onto your computer.

Saving Images from the Camera to Your Computer

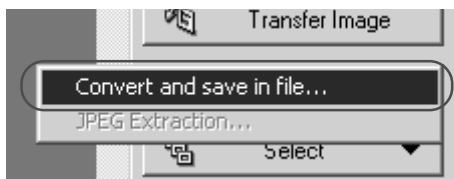
You should save the images you have shot on your computer.

1 Select the images.

- To save the images to separate folders, click the folder name in the select image folder display area and then select the images to be saved.
- To gather images in different folders together and save them in the same folder, click [All] in the select image folder display area and then select the images to be saved.
- Only the images with colored frames are saved.
- See “Selecting Images” (→3-13) for information on how to select images.

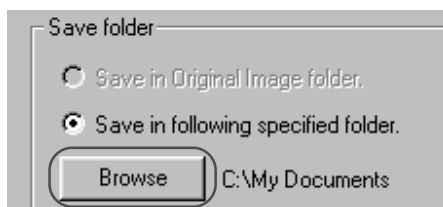
2 Click the [Save File] button and select [Convert and save in file] from the menu that appears.

- The [Save File] dialog box appears.



3 Click the [Browse] button.

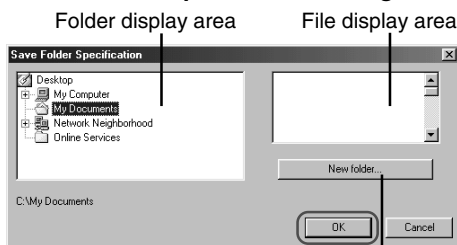
- The [Save Folder Specification] dialog box appears.



4 Select a folder.

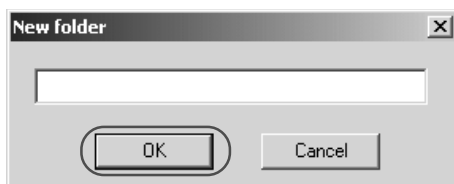
- Select the folder that the images will be saved in from the folder display area and click the [OK] button.
- The image files in the selected folder are displayed in the file display area.

Save Folder Specification dialog box



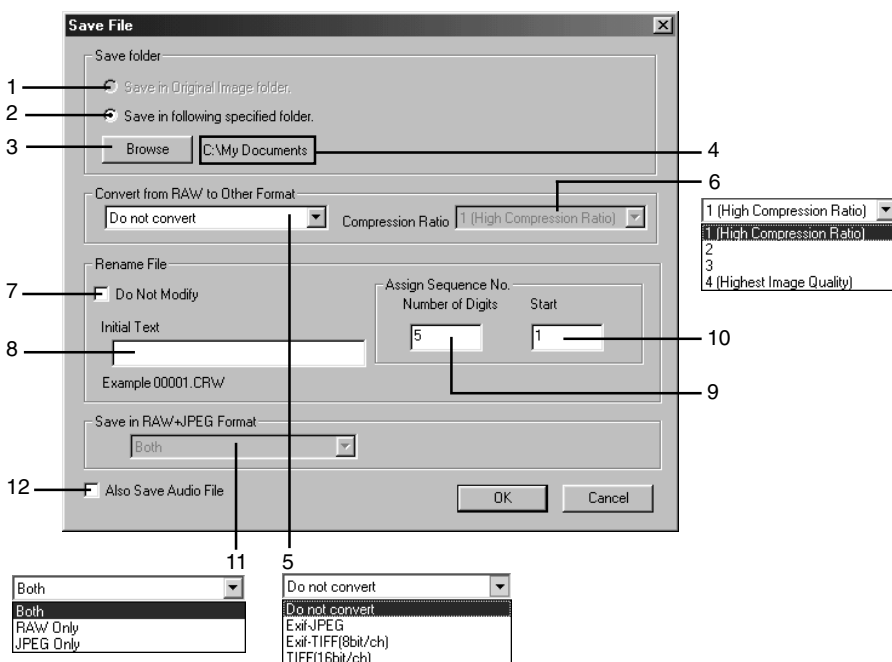
New folder button

- ➔ Clicking the [New folder] button opens the [New folder] dialog box.
- You can create a new folder inside the selected folder by entering the folder name and clicking the [OK] button.



- 5 Set the save options and click the [OK] button.**
- ➔ The images are saved in the selected folder.


Save File dialog box



- 1 The converted image is saved in the same folder as the displayed image. You cannot select this option for images that are saved on a CF card in the camera. This option is only available for images saved on your computer or on a CF card in a card reader.
- 2 Use this button when you want to specify the folder in which the image will be saved.
- 3 When the [Save in following specified folder] radio button is selected, this button specifies the folder in which the image will be saved.
- 4 Shows the folder in which the image will be saved.

- 5 Select this option when the images to be saved include RAW images. Select [Do not convert], [Exif-JPEG], [Exif-TIFF(8bit/ch)] or [TIFF(16bit/ch)]. The file extensions used for the saved files are shown below.

Conversion Format	File Extension
Do not convert	_.TIF
Exif-JPEG	_.RJ.JPG
Exif-TIFF(8bit/ch)	_.RT8.TIF
TIFF(16bit/ch)	_.RT16.TIF

-  ● The TWAIN Driver cannot display images converted to TIFF format (Exif-TIFF(8bit/ch) or TIFF(16bit/ch)) and saved.
- To use linear processing, specify linear processing in the [Preferences] dialog box (→3-39) and select [TIFF(16bit/ch)] when you save the image. Even when linear processing is specified, linear processing cannot be applied to images saved in [Exif-TIFF(8bit/ch)] format.
- 6 You can specify the [Compression Ratio] (image quality) when you select [Exif-JPEG] from the [Convert from RAW to Other Format] list box. You can select from 4 compression ratios-[4 (Highest Image Quality)] to [1 (High Compression Ratio)]. The higher the value, the higher the quality of the JPEG image.
- 7 This checkbox is enabled when you select [Do not convert] in the [Convert from RAW to Other Format] list box. Click this checkbox when you want to save the RAW image without changing the name.
- 8 This is text inserted before the file number for sorting. You can enter up to 12 characters. When you enter text, an example of the file name appears in the [Example] field below the text box.
- 9 You can specify up to 9 digits in the file number.
- 10 Specifies the first file number.
- 11 You can select this option when the images to be saved include images that were recorded simultaneously in RAW+JPEG formats. You can choose to save the images in [Both] RAW and JPEG formats, in [RAW Only] or in [JPEG Only]. The table below shows the respective file extensions added to the saved image files. If you selected [Both], the RAW and JPEG files are given the same file number.

Save Format	File Extension
Both	RAW _.R.TIF
	JPEG _.J.JPG
RAW Only	.TIF
JPEG Only	.JPG

- 12 When the image files to be saved include images with sound, this option can save the sound files with the respective images.



A range of operations is also available by selecting the image, pressing the right mouse button and selecting an option from the menu that appears.

Specifying the Preferences

You can use the procedure below to specify the general settings for the TWAIN Driver and the processing method for RAW images.

1 Click the [Preferences] button.

→ The [Preferences] dialog box appears.



2 Select the [General Settings] tab or the [RAW Image Processing settings] tab.

→ The selected tab sheet appears.

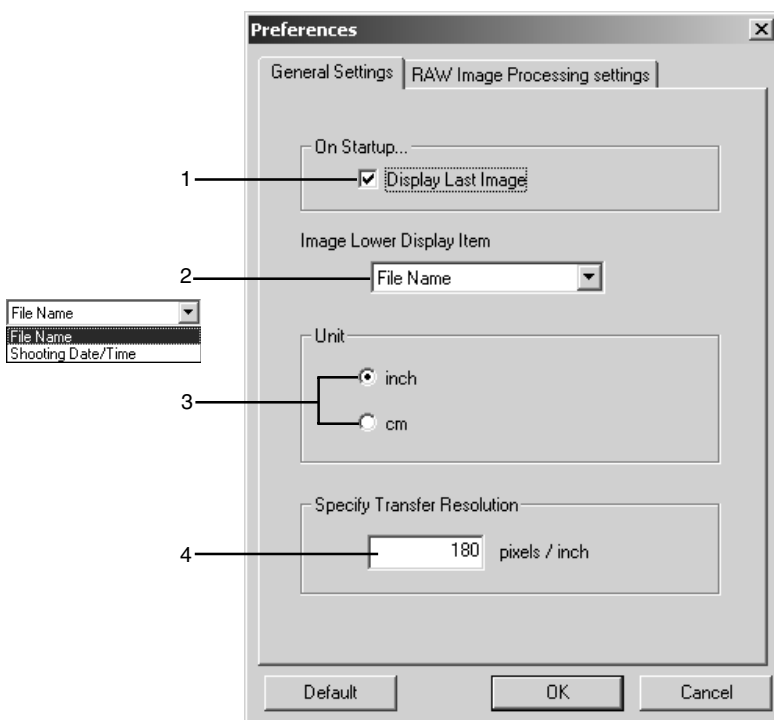
3 Specify the desired settings.

- Select the desired option in each setting.

4 Click the [OK] button.

→ The settings are applied and the [Preferences] dialog box closes to end the procedure.

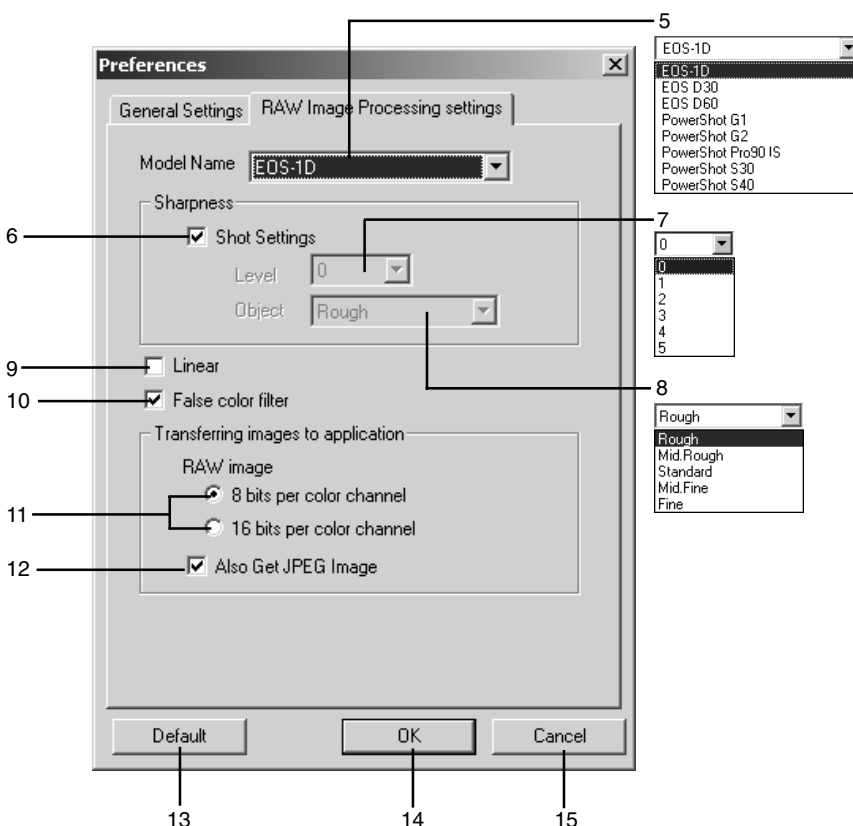
General Settings tab sheet



● You can specify the settings shown below in the [General Settings] tab sheet.

- 1 When you click the [Camera Connection] button, the highest numbered image in the highest numbered folder in the DCIM folder is displayed.
When this checkbox is not checked, the lowest numbered image in the lowest numbered folder is displayed.
- 2 Select [File Name] or [Shooting Date/Time] as the information displayed below images.
- 3 Select [inch] or [cm] as the units used in the TWAIN Driver.
- 4 Sets the resolution used when images are transferred to a TWAIN Driver-compatible application such as Photoshop 5.0 LE. You can specify values between 50 and 2400 pixels for [inch] and between 20 and 944 pixels for [cm].

RAW Image Processing settings tab sheet



● **You can specify the settings shown below in the [RAW Image Processing settings] tab sheet.**

The settings described here are those shown when [EOS-1D] is selected in the [Model Name] list box.

- 5 Select [EOS-1D].
- 6 Clicking this checkbox applies the settings used when the shot was taken.
- 7 Select any of 6 ([0] to [5]) levels of sharpness.
- 8 Select any of 5 ([Fine], [Mid.Fine], [Standard], [Mid.Rough], or [Rough]) target frequencies for sharpness adjustment.
- 9 You should select this option when you want to perform the linear processing on an image. If you select this option, the tone curve adjustment (→3-23) cannot be performed. Since the linear processing is performed on the tone curve adjustment when the image is transferred to an application such as Photoshop 5.0 LE, there is little image degradation as a result and you can make your own fine adjustments to the color chroma.
- 10 Clicking this checkbox neutralizes false colors.
- 11 Select [8 bits per color channel] or [16 bits per color channel] as the download bit rate to the TWAIN Driver-compatible application.
- 12 Clicking this checkbox ensures that the RAW and JPEG images are transferred at the same time when you transfer an image in the RAW+JPEG format. If you clear this checkbox, only the RAW image is transferred.

● **The buttons listed below are displayed in each of the tab sheets. They function in the same way in each sheet.**

- 13 Restores the default settings for all the parameters in the currently displayed tab sheet.
- 14 Applies the specified parameters, closes the [Preferences] dialog box and ends the procedure.
- 15 Discards all the settings, restores the parameters to their original values and ends the procedure.



When you select any camera other than [EOS-1D] in the [Model Name] list box, the available settings for the respective camera model are displayed.

Transferring Images to Photoshop 5.0 LE ■

Use the procedure below to transfer images displayed by the TWAIN Driver to Photoshop 5.0 LE (TWAIN Driver-compatible application).

1 Select the transfer mode from the [Image Transfer Mode] list box.

- There are 2 available transfer modes.

[Single-Frame Transfer]:

The selected images are transferred as an individual image.

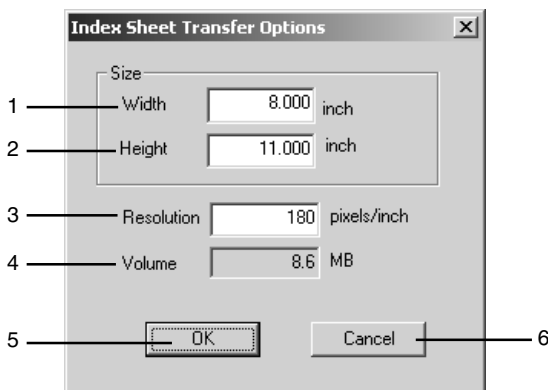
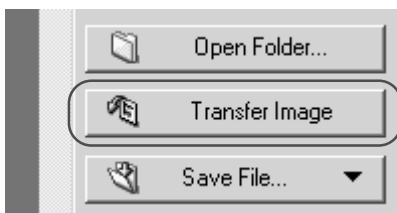
[Transfer as Index Image]:

Thumbnails are created for the selected images and transferred as an index sheet.



2 Click the [Transfer Image] button.

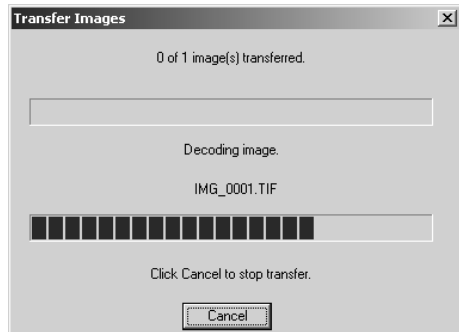
→ If you selected [Transfer as Index Image] in the [Image Transfer Mode] list box, the [Index Sheet Transfer Options] dialog box appears.



- 1 Enter the width of the index sheet to be created.
- 2 Enter the height of the index sheet to be created.
- 3 Enter the resolution of the index images.
- 4 Indicates the projected image file size based on the specified width, height and resolution.
- 5 Applies the specified settings, closes the [Index Sheet Transfer Options] dialog box and starts index sheet transfer.
- 6 Cancels the index sheet transfer options settings.

3 Enter the settings and click the [OK] button.

- ➔ The [Transfer Images] dialog box appears and the progress of transferring is displayed.
- You can stop image transferring by pressing the [Cancel] button.



- ➔ The transferred image is displayed in Photoshop 5.0 LE.
- ➔ The [Image] icon is displayed for transferred images. (→3-10)
- Click the [Exit] button in the main window to exit the TWAIN Driver.
- Display an image transferred with [Single-Frame Transfer].



- Display images transferred with [Transfer as Index Image].



- When you select RAW images and transfer the images as index images, the RAW image processing settings specified in the TWAIN Driver are not reflected in the transferred images.
- When you want to transfer a single frame, you can also transfer the image by simply positioning the mouse cursor over the image and double-clicking.
- A range of operations is also available by selecting the image, pressing the right mouse button and selecting an option from the menu that appears.
- You can modify the transfer resolution setting in the [General Settings] tab sheet in the [Preferences] dialog box. (→3-38)
- The maximum number of images that can be transferred at one time to Photoshop 5.0 LE is 30.

4

Downloading Images with the WIA Driver

This chapter describes how to download images with the WIA Driver. The WIA Driver is the driver software used for Windows Me and Windows XP.

A number of restrictions apply to the WIA Driver, including restrictions on image deletion and protection. For more information, refer to: [Start] ► [Programs] ([All Programs] on Windows XP) ► [Canon Utilities] folder ► [EOS-1D WIA Driver] folder ► [WIA Driver Readme].

Downloading Images

When you are using Windows Me or Windows XP, you can download images using a wizard, Explorer or the WIA TWAIN.

Downloading with the Scanner and Camera Wizard

Follow the Wizard's on-screen messages to download images to the computer. Note that you cannot download RAW images using the [Scanner and Camera Wizard]. To download RAW images, use Windows Explorer. (See "Downloading with Windows Explorer" on the next page.)

1 Connect the camera to your computer.

- For more information on connecting the camera to your computer, see "Connecting the Camera to Your Computer" (→2-2).
- ➔ If you are using Windows Me, the [Scanner and Camera Wizard] dialog box appears.
- ➔ If you are using Windows XP, the [EOS-1D] dialog box appears. Select [Microsoft Scanner and Camera Wizard], and then click the [OK] button. The [Scanner and Camera Wizard] dialog box appears.

2 Click the [Next] button.

- ➔ The image selection window in the [Scanner and Camera Wizard] dialog box appears.

3 Select the image(s) you wish to download and click the [Next] button.

- To select multiple images, press and hold the <Ctrl> or <Shift> key on the keyboard while clicking on images. To select all the images, click the [Select All] button.
- ➔ The image save destination window in the [Scanner and Camera Wizard] dialog box appears.



4 Specify a filename and save location and click the [Finish] button.

- The selected images will be downloaded to the specified folder. If you do not specify a folder, they are saved by default to the [My Pictures] folder within the computer's [My Document] folder.

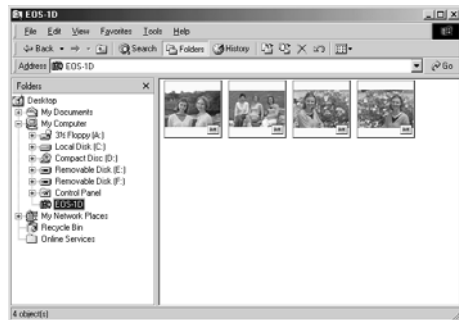


ZoomBrowser EX auto start is not supported on Windows XP. (ZoomBrowser EX starts up from the [EOS-1D] dialog box.) When the [EOS-1D] dialog box appears after you connect the camera to your computer, select [Microsoft Scanner and Camera Wizard].

Images can be downloaded to the computer with Windows Explorer just as you would copy any other file. RAW images can also be downloaded this way.

- For more information on connecting the camera to your computer, see “Connecting the Camera to Your Computer” (→2-2).
- ➔ If you are using Windows Me, the [Scanner and Camera Wizard] dialog box appears.
- ➔ If you are using Windows XP, the [EOS-1D] dialog box appears.

- You can start Windows Explorer by right-clicking the [Start] button and selecting [Explorer] from the menu that appears.
- ➔ The camera's images will be displayed as thumbnails in the Explorer window.



- Download by Specifying a Folder
When you select and right-click an image in Explorer and then select [Save] from the menu that appears, the [Browse for folders] dialog box appears. Click on the folder to be used to save the images and click the [OK] button. The image files and their thumbnails are then saved in the selected folder.
- Download by Dragging and Dropping
Select an image in the Explorer window, drag it to the target folder and drop it.

Processing RAW Images with Windows Explorer

When you select and right-click a RAW image in Windows Explorer and then select [Convert] from the menu that appears, RAW Image Converter starts up. You can process RAW images by first clicking the [List for Development Condition Settings] button. See “Processing RAW Images” (→3-20) for more information on how to process RAW images.



If you use RemoteCapture to take pictures while you are using Windows Explorer to display images on the camera, RemoteCapture may not operate correctly.



When you select [Properties] from the [File] menu, and click the [Camera Settings] button in the [Camera Settings] tab sheet in the displayed [EOS-1D Properties] dialog box, you can specify the camera settings on the displayed dialog box. See Chapter 6, “Specifying Camera Settings from Your Computer” for information on how to specify the camera settings.

7 Select the image(s) you wish to download and click the [Get Picture] button.

- ➔ The selected image(s) will be downloaded to the program.
- The methods for starting the software and using the dialog boxes differ depending on the program you are using. Refer to the User's Manuals provided with your software for details.



RAW images will not be displayed in the WIA TWAIN. Accordingly, RAW images cannot be downloaded with this method. To download RAW images, use Windows Explorer. (See "Downloading with Windows Explorer" (→4-3).)

5

Working with Images in RAW Image Converter

This chapter describes how to use RAW Image Converter to display images that you have saved onto your computer or onto a CF card inserted into a third-party card reader, and how to process and image-process those RAW images.

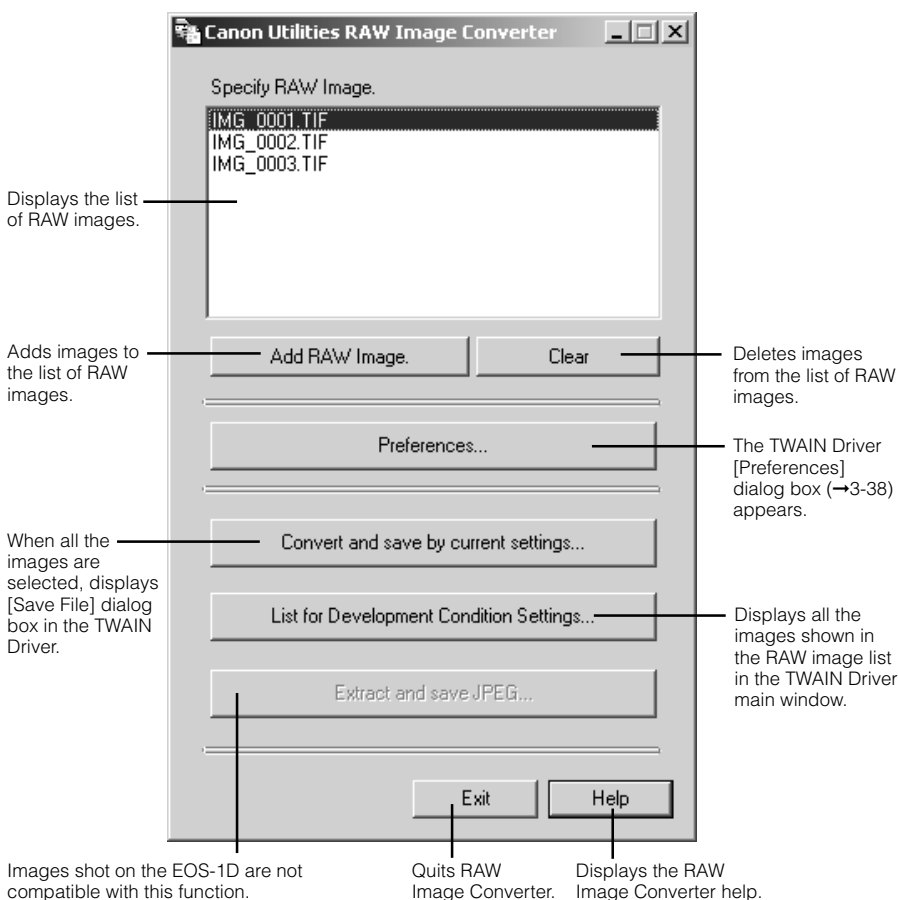
Using RAW Image Converter

When you use the WIA Driver or copy images directly from a card reader, you can use RAW Image Converter to display and process images in the same way as the TWAIN Driver. You can also save the processed images in JPEG or TIFF (8 or 16 bits/channel) format.

1 Start RAW Image Converter.

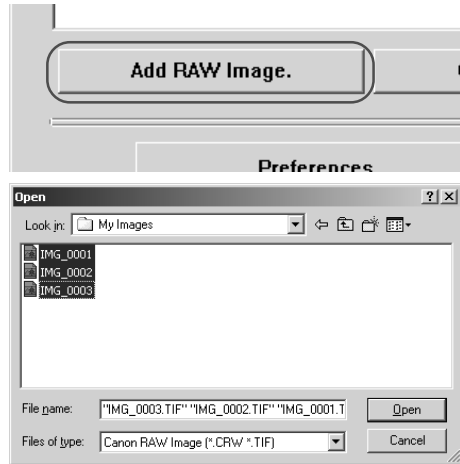
- Click the [Start] button and then select [Programs] ([All Programs] on Windows XP) ► [Canon Utilities] ► [RAW Image Converter xx] ► [RAW Image Converter xx].
 - RAW Image Converter version information is displayed in xx.
 - When you are using the WIA Driver, you can also start RAW Image Converter by selecting a RAW image on the camera, press the right mouse button to display the menu and then selecting [Process].
- ➔ The [RAW Image Converter] main window appears.

RAW Image Converter main window

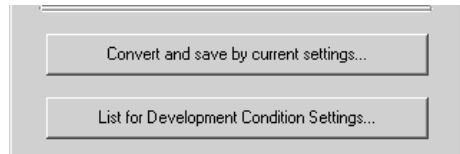


2 Download the images.

- Click the [Add RAW Image] button, select the images from the [Open] dialog box that appears and add the RAW images to the image list.
- ➔ The RAW images are added to the image list.

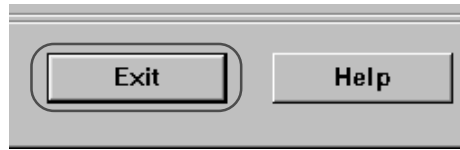


3 Image-process and save the images.



- When you click the [Convert and save by current settings] button and all the RAW images displayed in the image list are selected, the TWAIN Driver's [Save File] dialog box (→3-36) appears. Use this dialog box to process and save the images.
- When you click the [List for Development Condition Settings] button, all the RAW images shown in the image list are displayed as thumbnails in the TWAIN Driver's main window (→3-4). Use this window to process and image-process the images.

4 Click the [Exit] button.



- For more information on using the windows and dialog boxes that appear, see Chapter 3, “Working with Images in the TWAIN Driver”.
- When you display the TWAIN Driver’s main window from RAW Image Converter, the [Camera Settings] button, [Camera Connection] button, [Transfer Image] button, [Erase] button and [Image Transfer Mode] list box are not shown. To perform tasks such as downloading images from the camera, start the TWAIN Driver from Photoshop 5.0 LE.



You can add the RAW image to be processed that is saved on the CF card in your computer or card reader to the image list in RAW Image Converter by dragging and dropping it.

6

Specifying Camera Settings from Your Computer

6

This chapter describes basic settings such as Owner's Name and Date/Time, as well as detailed settings such as the Personal Functions, Parameters and Personal White Balance.

Specifying the Camera Settings

In the Camera Settings dialog box, you can specify Basic Settings such as Owner's Name, and Date and Time, and you can also use the Personal Functions and Parameters to specify Detailed Settings of the camera functions.

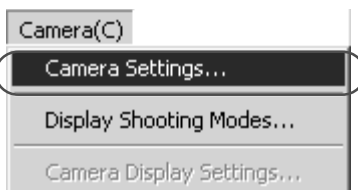
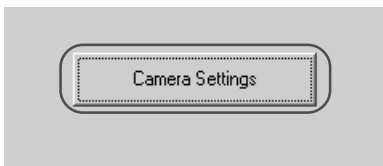
Basic Settings

Use the procedure described here to apply the owner name and date/time settings to the camera. The owner name, and date and time that were applied on the camera are recorded with the photographed images and also used as IPTC information (→3-30).

You can also format (initialize) CF cards and check the camera properties data and the status of the battery and the CF card.

Display the [Camera Settings] dialog box.

- To display this dialog box from the TWAIN Driver, click the [Camera Settings] button in the main window.
- To display this dialog box from the WIA Driver, select [EOS-1D] in Windows Explorer, and then select [Properties] from the [File] menu.
→ The [EOS-1D Properties] dialog box appears.
- Select the [Camera Settings] tab, and then click the [Camera Settings] button.
- To display this dialog box from ZoomBrowser EX, click the [SETUP OPTIONS] button in the Camera window and select [Camera Settings] from the menu that appears.
- To display this dialog box from RemoteCapture, select [Camera Settings] from the [Camera] menu in the Shooting window.



- The [Basic Settings] tab sheet in the [Camera Settings] dialog box appears.

Basic Settings tab sheet

Camera Model: EOS-1D
Body ID: 000001
Firmware Version: 1.4.0

Owner's Name:

Date and Time:

03 / 28 / 2002

02 : 12 PM

From PC

Battery Status:

Memory card:

Format...

Status: Installed
Free: 50.9 MB
Total: 60.9 MB

OK

Cancel

Apply

Help

This box shows the Camera's model name, Body ID and Firmware Version.

These fields set the camera owner and the date and time. You can enter up to 31 characters in [Owner's Name].

This box shows whether a CF card is loaded in the camera along with the available space on the card and its total capacity. You can also format a CF card from this box.

Applies the specified settings, closes the [Camera Settings] dialog box and ends the procedure.

Applies the settings.

Opens the help window of the [Camera Settings] dialog box.

The battery level of the camera battery is indicated by or . When a household power source is used, is displayed.

Discards all the settings, restores the parameters to their original values and ends the procedure.

6

Specifying Camera Settings from Your Computer

Formatting (initializing) a CF card erases all the data on the card. Because formatting also erases protected images, you should check the data recorded on the card carefully before proceeding.

6-3

Setting the Owner's Name, Date and Time

1 Enter the Owner's Name.

- Type in the name from your keyboard. You can enter up to 31 characters.

2 Set the Date and Time.

- You can click Date or Time with the mouse and use the [▲] and [▼] buttons to set the Date and Time, or you can enter the desired date or time from the keyboard. Clicking the [From PC] button imports the Date and Time data from your computer.

3 Click the [Apply] button.

- ➔ The owner's name, date and time settings are applied to the camera.
- Once you click the [Apply] button, the settings remain effective until you reset the owner's name, date or time.
- Clicking the [OK] button applies the specified settings, closes the [Camera Settings] dialog box and ends the procedure.

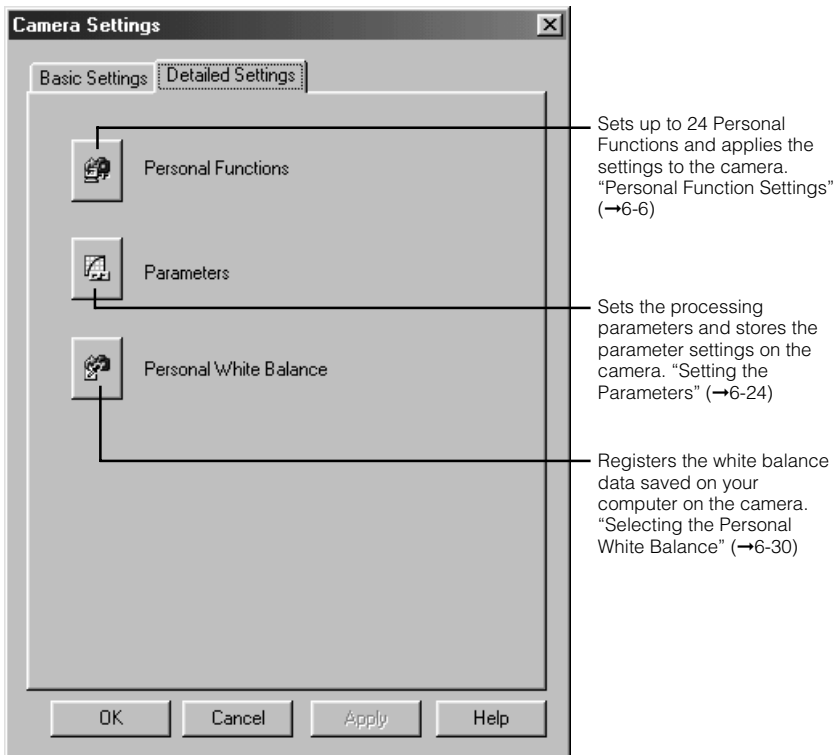
Detailed Settings

The Detailed Settings consist of the Personal Functions, parameter settings and personal white balance settings, and allow you to apply and store highly detailed settings on the camera. You can also save and load the settings for each function on your computer.

1 Click the [Detailed Settings] tab.
→ The [Detailed Settings] tab sheet appears.

2 Click the desired settings button.

Detailed Settings tab sheet

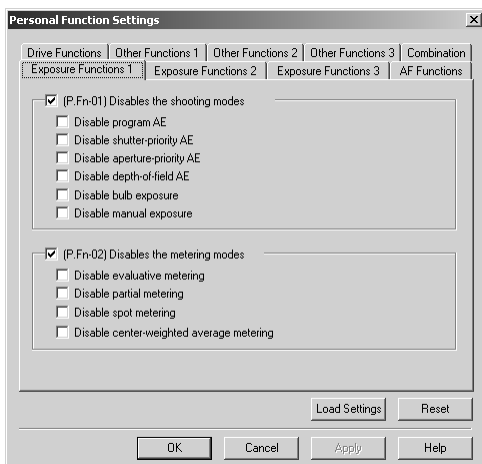


Personal Function Settings

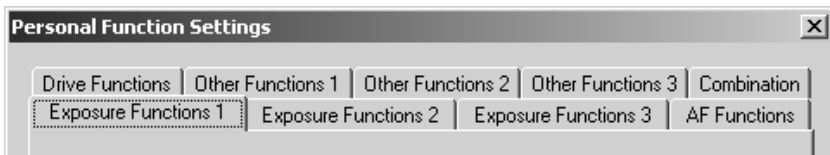
For the EOS-1D, you can set up to 24 Personal Functions tailored to different types of photography and apply those function settings to the camera. The 24 Personal Functions are divided into the [Exposure Functions], [AF Functions], [Drive Functions] and [Other Functions] categories, each with their own tab sheets. There is also a [Combination] tab sheet, in which you can check the Personal Functions that are currently set up. In the [Combination] tab sheet you can also save and load the Personal Function settings on your computer.

Setting Up Personal Functions

- 1 Click the [Personal Functions] button.
→ The [Personal Function Settings] dialog box appears.



- 2 Select the desired settings tab.



- The display switches to the selected tab sheet.
- By selecting the [Combination] tab, you can check and save or load the Personal Functions that have been set up.

You can specify the Personal Function settings listed below in the different tab sheets.

[Exposure Functions 1]

P.Fn-01 Disables the shooting modes. (→6-9)

P.Fn-02 Disables the metering modes. (→6-9)

[Exposure Functions 2]

P.Fn-03 Specifies the metering mode for manual exposure. (→6-10)

P.Fn-04 Sets the maximum and minimum shutter speeds to be used. (→6-10)

P.Fn-05 Sets the maximum and minimum apertures to be used. (→6-11)

[Exposure Functions 3]

P.Fn-06 Registers and switches the shooting mode and metering mode. (→6-11)

P.Fn-07 Repeats bracketing during continuous shooting. (→6-13)

P.Fn-08 Sets the number of shots to be bracketed. (→6-13)

P.Fn-09 Changes the bracketing sequence for C.Fn9-2/3 to increased exposure, standard exposure, and decreased exposure. (→6-13)

P.Fn-10 Retains the shift amount for program shift. (→6-14)

[AF Functions]

P.Fn-13 Executes AI Servo AF continuous shooting giving priority to the drive speed. (→6-15)

P.Fn-14 Disables focus detection (search driving) by the lens drive. (→6-15)

P.Fn-15 Disables the AF-assist beam from being emitted. (→6-15)

P.Fn-16 Enables automatic shooting when focus is achieved at the fixed point of focus while the shutter button is pressed fully. (→6-16)

P.Fn-17 Disables automatic AF point selection (→6-16)

P.Fn-18 Enables automatic AF point selection when C.Fn-11-2 has been set. (→6-17)

[Drive Functions]

P.Fn-19 Sets the continuous shooting speed. (→6-17)

P.Fn-20 Limits the number of shots during continuous shooting. (→6-17)

P.Fn-21 Enables silent operation when the shutter button is OFF after picture-taking. (→6-18)

[Other Functions 1]

P.Fn-23 Changes the timer's time length. (→6-18)

P.Fn-24 Illuminates the LCD panel during bulb exposures. (→6-19)

[Other Functions 2]

P.Fn-25 Sets the default settings when the CLEAR (QUALITY+WB) button is ON. (→6-19)

[Other Functions 3]

P.Fn-27 Enables the electronic dial's function to be used in the reverse direction. (→6-20)

P.Fn-28 Prevents exposure compensation with the Quick Control Dial. (→6-20)

[Combination]

Allows you to check the settings (→6-21)

Allows you to save the settings (→6-22)

Allows you to load the saved settings (→6-23)

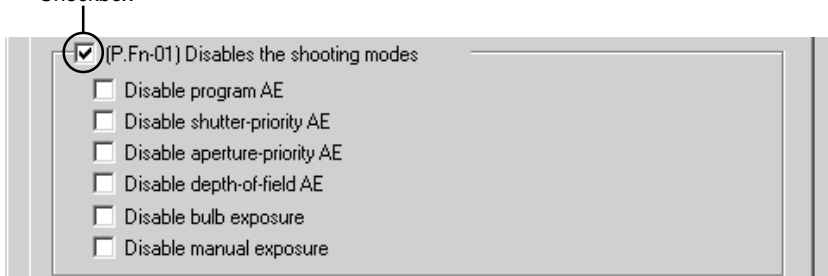
* Omission of P.Fn-11, 12, 22 and 26

The numbers and descriptions for P.Fn-0 to P.Fn-28 contain some omissions due to the fact that some functions on the EOS-1V are omitted on the EOS-1D, but the same Personal Function numbers are used on both models.

3 Set up the Personal Function.

- Select the settings you want to set by clicking the checkboxes for the respective items. Then use the appropriate method to specify the remaining settings using the radio buttons, list boxes, checkboxes and number input boxes.

Checkbox

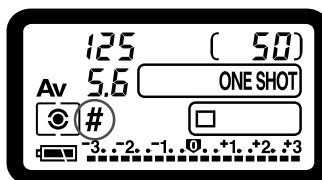
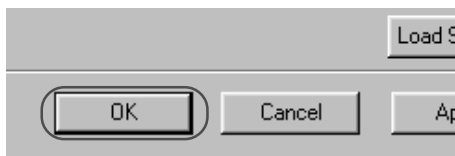


- If you enter a numerical value, values outside the valid range of settings are ignored.
- Clicking the [Load Settings] button replaces the settings with the Personal Function settings on the camera.

4 Repeat steps 2 and 3 to set up additional Personal Functions.

5 Apply the Personal Function Settings to the camera.

- Clicking the [OK] button applies the specified settings to the camera and closes the [Personal Function Settings] dialog box to end the procedure.
 - Clicking the [Apply] button applies the specified settings to the camera without closing the [Personal Function Settings] dialog box.
- When a Personal Function is applied to the camera, <#> appears on the LCD panel.

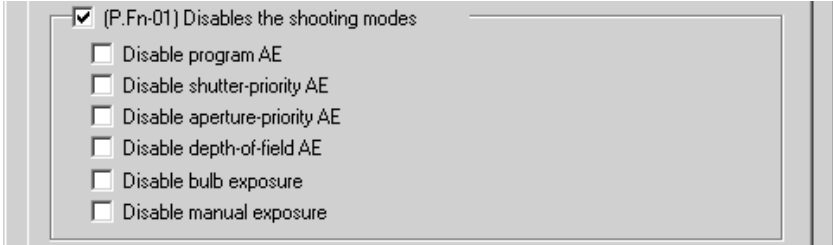


When you press the [Reset] button, the Personal Function Settings parameters are reset as follows:

- The checkboxes are cleared.
- The radio buttons, list boxes and number input boxes revert to the default values.

Description of Personal Functions

P.Fn-01 Disables the shooting modes.

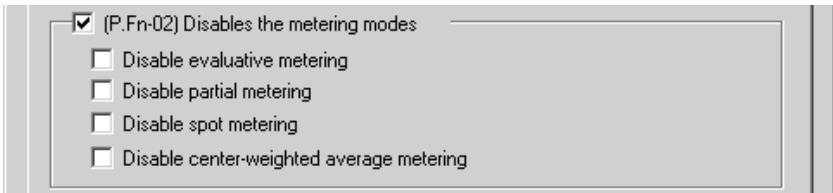


- Click the checkbox of the shooting modes you do not want to use.
- Unwanted shooting modes can be skipped while you are selecting the shooting mode.
- This makes selecting the desired shooting mode faster.



At least one checkbox must be left unchecked.

P.Fn-02 Disables the metering modes.

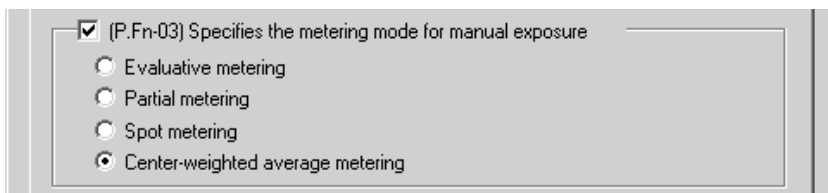


- Click the checkbox of the metering modes you do not want to use.
- Unwanted metering modes can be skipped while you are selecting the metering mode.
- This makes selecting the desired metering mode faster.



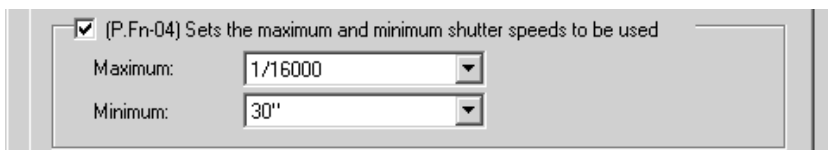
At least one checkbox must be left unchecked.

P.Fn-03 Specifies the metering mode for manual exposure.



- Click the radio button for the metering mode to be used during manual exposure.
- You can specify the metering mode to be used in the manual exposure mode.
- When you set the manual exposure mode, the metering mode selected here will be set automatically. In the manual exposure mode, this enables you to use a metering mode different from the one used in the AE modes.

P.Fn-04 Sets the maximum and minimum shutter speeds to be used.



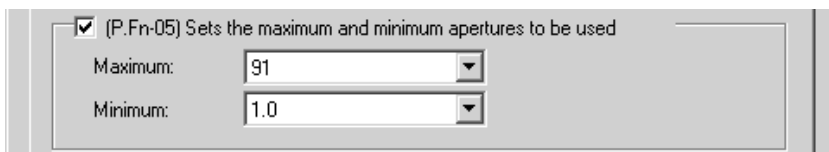
- Select the maximum and minimum shutter speeds from the list box.
- For example, if you set 1/2000 sec. as the fastest shutter speed and 1/60 sec. as the slowest, the shutter speed range will be 1/2000 to 1/60 sec.
- This makes shutter speed selection faster and prevents a slow-speed sync. in aperture-priority AE mode with the flash.



If you set the maximum and/or minimum shutter speed to one that is not a full-stop increment (such as 1/750 sec.), the controllable and settable shutter speed range might not be as exact as you set it. (A slight deviation may occur.) This applies if you also set Custom Function C.Fn-6-1 and C.Fn-6-2 and set the maximum and/or minimum shutter speed to one that is not a full-stop increment (such as 1/3200 sec.).



- To ensure that a proper flash sync speed is set in the Program AE mode, a shutter speed range of 1/400 sec. to 1/80 sec. cannot be set.
- If safety shift has been enabled (with C.Fn-16), it will override P.Fn-04's shutter speed range when necessary.

P.Fn-05 Sets the maximum and minimum apertures to be used.

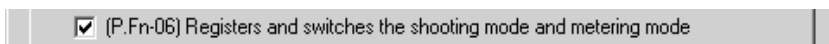
- Select the maximum and minimum apertures from the list box.
- For example, if you set 1.4 for the largest aperture and 8.0 for the smallest aperture, the usable aperture range will be f/1.4 to f/8.0.
- You can better control the apertures used by setting the range of usable apertures.




- Specify a minimum aperture value that is smaller than the maximum aperture setting. If you select a minimum aperture value that is larger than the maximum aperture, a warning message appears and the setting reverts to the default value.
- If you set the maximum and/or minimum aperture to one that is not a full-stop increment (such as f/4.5), the controllable and settable aperture range might not be as exact as you set it. (A slight deviation may occur.) This applies if you also set Custom Function C.Fn-6-1 or C.Fn-6-2 and set the maximum and/or minimum aperture to one that is not a full-stop increment (such as f/6.3).



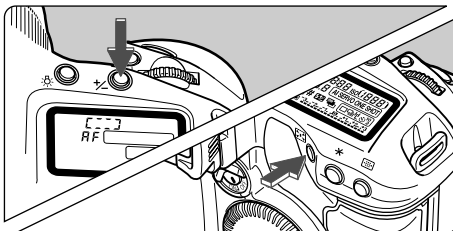
- If the largest aperture of the attached lens is smaller than the largest aperture you set with P.Fn-05, the largest aperture will be set to the largest aperture of the lens. And if the smallest aperture of the attached lens is larger than the smallest aperture you set with P.Fn-05, the smallest aperture will be set to the smallest aperture of the lens.
- If safety shift has been enabled (with C.Fn-16), it will override P.Fn-05's aperture range when necessary.

P.Fn-06 Registers and switches the shooting mode and metering mode.

- While you press the  button, you can select the preset shooting mode, exposure setting (such as the aperture for aperture-priority AE), metering mode, and exposure compensation amount.
- Select settings that are appropriate for each shooting mode.
- The modes and settings are preset with the camera.
See “Registering the Modes and Settings with the Camera” for information on the camera procedures. (→6-12)
- Convenient when you want to instantly select the preset modes and settings to suit a particular shooting situation such as backlit or front-lit conditions.

Registering the Modes and Settings with the Camera (P.Fn-06)

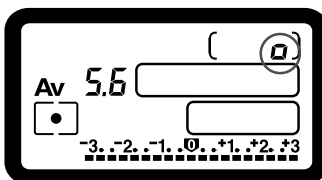
- 1 Set the desired shooting mode and shooting mode settings (aperture setting for aperture-priority AE mode). Then set the metering mode and exposure compensation amount.



- 2 Register the modes and settings.

- First press the $\langle \text{P.Fn-06} \rangle$ button, then press the $\langle \text{P.Fn-03} \rangle$ button.

→ $\langle \text{P.Fn-03} \rangle$ appears in the LCD panel, indicating that the modes and settings have registered.



- The registered modes and settings can be modified any number of times.



To register the modes and settings, first press the $\langle \text{P.Fn-06} \rangle$ button before the $\langle \text{P.Fn-03} \rangle$ button. If you press the $\langle \text{P.Fn-03} \rangle$ button first, the camera will only select the registered modes and settings instead.



- Depth-of-field AE and bulb cannot be preset.
- You cannot select the registered modes and settings during continuous shooting.
- If P.Fn-03 has been set to specify the metering mode for manual exposure, and P.Fn-06 is used to register the manual exposure mode and a metering mode different from the one specified with P.Fn-03, you can select the metering mode specified with P.Fn-03 by pressing the $\langle \text{P.Fn-03} \rangle$ button.
- If P.Fn-04 and/or P.Fn-05 has been set, set the shutter speed and aperture within the range specified with P.Fn-04 and/or P.Fn-05.
- If the shooting and metering modes you want to set are excluded by the restrictions in P.Fn-01 and P.Fn-02, those Personal Functions must be disabled. For information on clearing and resetting Personal Functions, see “Clearing and Resetting Personal Functions” in the EOS-1D Instructions.
- Even if the shooting and metering modes selected by P.Fn-06 are excluded by the restrictions in P.Fn-01 and P.Fn-02, they are still valid for P.Fn-06.

C.Fn

- If C.Fn-4-1 or C.Fn-4-3 has been set, AF and AE will also take effect when you press the $\langle \text{P.Fn-03} \rangle$ button.
- When C.Fn-18 is set, P.Fn-06 is disabled.

P.Fn-07 Repeats bracketing during continuous shooting.

☒ (P.Fn-07) Repeats bracketing during continuous shooting

- While you hold down the shutter button, bracketing repeats continuously in the currently selected drive mode.
- This function is useful when you want to continuously repeat the bracketing sequence.

P.Fn-08 Sets the number of shots to be bracketed.

☒ (P.Fn-08) Sets the number of shots to be bracketed

3

- Select the number of shots from the list box.
- The usual 3-frame bracketing is changed to 2-, 3-, 5-, or 7-frame bracketing.
- In bracketing shots, if you select 5-frame bracketing with 1-stop increment, the bracketing for the shots is -2, -1, 0, +1 and +2.
- If you select 5-frame white balance bracketing, the frames are shot at -10, -5, 0, +5 and +10 mireds.
- This function is useful for adjusting the range of bracketing.



- Even when the setting is outside the bracketing level display range, the exposure is compensated as specified.
- This function can be used in combination with C.Fn9-2/3 and P.Fn-09.

P.Fn-09 Changes the bracketing sequence for C.Fn9-2/3 to increased exposure, standard exposure, and decreased exposure.

☒ (P.Fn-09) Changes the bracketing sequence for C.Fn9-2/3 to increased exposure, standard exposure, and decreased exposure

- The bracketing sequence when C.Fn9-2/3 is selected (decreased exposure → standard exposure → increased exposure) changes to increased exposure → standard exposure → decreased exposure.
- This function is useful when you want to start the bracketing sequence with a increased exposed frame.



This function can be used in combination with P.Fn-08.

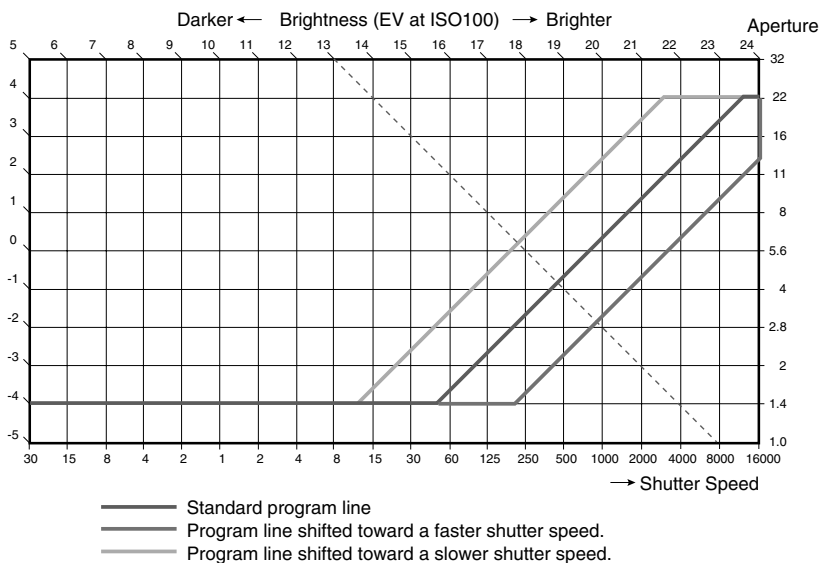
P.Fn-10 Retains the shift amount for program shift.

☒ (P.Fn-10) Retains the shift amount for program shift

- Normally, any program shift amount is canceled after you take the picture. This Personal Function retains the program shift amount.
- This function is useful when you want to shift the standard program line so that priority is given to the shutter speed or to the aperture.

By shifting the program, you can change the shutter speed or aperture and still retain the same exposure level. Under the same brightness, you can shift the program line toward the right to set a faster shutter speed and a larger aperture (lower f/number). Or you can shift the program line toward the left to set a slower shutter speed and a smaller aperture (higher f/number).

P.Fn-10 retains the amount of program shift. Select the appropriate amount of shift for the level of priority you want to give to the shutter speed or aperture setting.



With EF 50mm f/1.4 USM lens



- The program shift amount remains in effect until you set it back to the standard program manually or replace the battery or press the <CLEAR> button.
- The shift amount is retained even after you change the lens.

P.Fn-13 Executes AI Servo AF continuous shooting giving priority to the drive speed.

☒ (P.Fn-13) Executes AI Servo AF continuous shooting giving priority to the drive speed

- During continuous shooting, shutter release-priority takes effect instead of focus-priority.
- Effective when it is more important to capture an image even though it might be slightly out of focus.

P.Fn-14 Disables focus detection (search driving) by the lens drive.

☒ (P.Fn-14) Disables focus detection (search driving) by the lens drive

- Normally, when you press the shutter button halfway and focus cannot be achieved, the lens is driven to search the correct focus. This lens driving operation can be turned off.
- When focus has been achieved once and refocusing fails, the subsequent lens driving operation can result in grossly inaccurate focus. This subsequent lens driving operation is turned off. P.Fn-14 is especially suited for super telephoto lenses.




If autofocus is attempted while the lens is way out of focus, the lens may stop operating. Focus manually until the subject outline becomes discernable, then autofocus.

P.Fn-15 Disables the AF-assist beam from being emitted.

☒ (P.Fn-15) Disables the AF-assist beam from being emitted

- This disables the external Speedlite's built-in AF-assist beam.
- At a joint photo session, etc., this prevents the AF-assist beam's pattern projected on the subject from being photographed by other photographers.

P.Fn-16 Enables automatic shooting when focus is achieved at the fixed point of focus while the shutter button is pressed fully.

 (P.Fn-16) Enables automatic shooting when focus is achieved at the fixed point of focus while the shutter button is pressed fully

- This takes the picture automatically when the subject comes to the preset focusing distance. Focusing detection is performed using the selected AF point.
- Set the lens focus mode switch to MF (or M) and focus manually at the desired point of focus.
- Keep pressing the shutter button fully.
- Using an accessory like Remote Controller RS-80N3 which can lock the shutter button relieves you from holding down the shutter button while you wait for the subject.



- Because the camera remains on standby while the shutter button is fully pressed, battery power is used up more quickly. For long periods of photography, use the DC Coupler Kit.
- When this function is used in combination with a flash, the flash remains on standby at full charge. Consequently, the flash batteries are used up more quickly. (The Speedlite's SE mode is disabled.)
- When you use a flash with this function, set the drive mode to single-frame shooting. If you select continuous shooting, the flash will be unable to charge in time for successive shots and will not fire at full charge.
- If you set the drive mode to continuous shooting, set the number of shots in P.Fn-20. If you do not use P.Fn-20, once the camera focuses on the subject, continuous shooting will continue until the capacity of the CF card is reached.
- P.Fn-16 cannot be used with manual focus lenses or with lenses that are too slow to be used with autofocus.
- Do not use this function when C.Fn-4-1/3 is set as shots will be taken regardless of whether the image is in focus.




Using an accessory like Remote Controller RS-80N3 which can lock the shutter button is recommended.

P.Fn-17 Disables automatic AF point selection.

 (P.Fn-17) Disables automatic AF point selection

- During manual AF point selection, if you try to select an AF point beyond a peripheral AF point, the camera normally switches to automatic AF point selection. This Personal Function prevents this.
- When you select beyond the peripheral AF point, the selection stops there. It makes selecting a peripheral AF point faster.



- If C.Fn-11-2 has been set, you can still switch to automatic AF point selection by pressing the  button during autofocus. (→ “AF Point Selection” in the EOS-1D Instructions)
- If automatic AF point selection has been preset at [AF frame registration] setting, the preset setting remains valid. (→ “AF Point Registration and Switching” in the EOS-1D Instructions)

P.Fn-18 Enables automatic AF point selection when C.Fn-11-2 has been set.

☒ (P.Fn-18) Enables automatic AF point selection when C.Fn-11-2 has been set

- Enables the standard horizontal AF point selection together with automatic AF point selection with C.Fn-11-2.
- Convenient when you want to use automatic AF point selection while C.Fn-11-2 has been set.



If P.Fn-17 [Disables automatic AF point selection] has also been set, P.Fn-17 will override P.Fn-18 to disable automatic AF point selection.

P.Fn-19 Sets the continuous shooting speed.

☒ (P.Fn-19) Sets the continuous shooting speed

High-Speed Continuous Shooting: 8

Low-Speed Continuous Shooting: 3

- You can select the number of continuous shots during low- or high-speed continuous shooting.
- By reducing the maximum continuous shooting speed, AI Servo AF continuous shooting can be more stable.



Depending on the AF mode, it may not be possible to complete the selected number of continuous shots. (→ "Drive Mode Selection" in the EOS-1D Instructions.)

P.Fn-20 Limits the number of shots during continuous shooting.

☒ (P.Fn-20) Limits the number of shots during continuous shooting

No. Frames for Continuous Shooting: 21

- This enables you to set the maximum number of shots to be exposed during continuous shooting while the shutter button is pressed fully.
- Convenient when you do not want to shoot an unwanted scene that follows.

P.Fn-21 Enables silent operation when the shutter button is OFF after picture-taking.

☒ (P.Fn-21) Enables silent operation when the shutter button is OFF after picture-taking

- When single-frame shooting is selected, this function selects quiet camera operation when you release the shutter button from the fully pressed position to the half way position.
- This is useful when the camera operation noise would be disturbing after you take the picture.



If you select continuous shooting, the camera operates normally.

C.Fn

Setting mirror lockup with C.Fn-12 will further reduce the shooting noise.

P.Fn-23 Changes the timer's time length.

☒ (P.Fn-23) Changes the timer's time length

6 sec. Timer:	<input type="text" value="6"/>	sec
16 sec. Timer:	<input type="text" value="16"/>	sec
Post-shutter release timer:	<input type="text" value="2"/>	sec



- After you press and release a button, the respective function remains active for a specific number of seconds. You can change this number of seconds as necessary.
- The function's activation time can be set from 0 to 3600 sec. (1 hour).
- If the standard activation time is too short or too long, you can adjust it.

6 sec. Timer	<ul style="list-style-type: none">● After you press the shutter button halfway or the < * > button.● Depth-of-field AE setting time.
16 sec. Timer	<ul style="list-style-type: none">● FE lock time after you press the < FEL > button.
Post-shutter release timer	<ul style="list-style-type: none">● Exposure setting retaining time after the picture is taken. Setting this to a longer time can make it easier to shoot with AE lock.● LCD panel illumination time after the picture is taken.



Be aware that a longer activation time will consume more battery power. The battery life will become shorter and fewer number of shots can be taken with the battery.



To turn off the function's activation time midway, press the < MODE > button, < AF > button or <   > button.

P.Fn-24 Illuminates the LCD panel during bulb exposures.

☒ (P.Fn-24) Illuminates the LCD panel during bulb exposures

- After the bulb exposure starts, press the <LCD panel illumination> button to illuminate the LCD panel until the bulb exposure ends.
- Convenient when you want to monitor the elapsed bulb exposure time.



Taking bulb shots for long periods speeds up battery charge depletion and reduces the number of available shots.

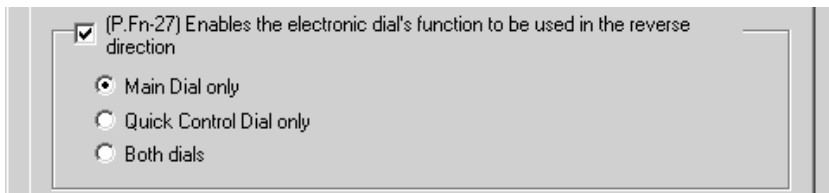
P.Fn-25 Sets the default settings when the CLEAR (QUALITY+WB) button is ON.

☒ (P.Fn-25) Sets the default settings when the CLEAR(QUALITY+WB) button is ON

Shooting Mode:	Program AE
Metering Mode:	Evaluative Metering
Drive Mode:	Single-Frame Shooting
AF Mode:	ONE SHOT AF
Focusing point selection:	Automatic
Image Quality Mode:	JPEG Large Fine
White Balance Mode:	Auto (AWB)
Parameters Settings:	Normal
ColorMatrix:	1


- You can use this function to select the default mode selected when you press the CLEAR button <QUALITY+WB>.
- Convenient when you want to instantly switch to frequently-used settings.

P.Fn-27 Enables the electronic dial's function to be used in the reverse direction.

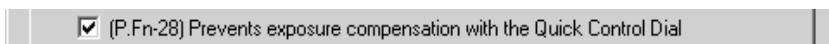


- The electronic dial's rotational function can be reversed for selecting the AF point and setting the shutter speed and aperture.
- By matching the dial's rotation direction to the particular operation, the operation can feel more intuitive.



When the <  > dial's rotational function is reversed, the horizontal AF point selection direction does not change.

P.Fn-28 Prevents exposure compensation with the Quick Control Dial.



- The Quick Control Dial cannot be used to set exposure compensation.
- This prevents exposure compensation from being set accidentally while the AF point is being selected.

Checking, Saving, and Loading Personal Function Settings

Use the procedure below to check the details of the Personal Functions that have been set up. You can also save the settings on your computer and then load the saved settings and apply them to the camera.

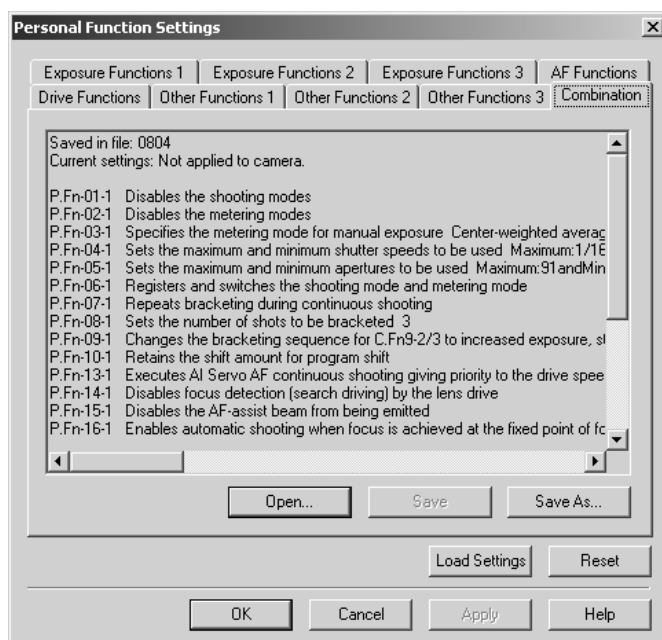
Checking the Settings

1 Select the [Combination] tab.

- ➔ The [Combination] tab sheet is displayed.
- You can use this tab sheet to check the Personal Function parameters currently set on your computer and check whether they have been applied to the camera.

2 If the data has not been applied, click either the [OK] button or the [Apply] button as required.

- Clicking the [OK] button applies the specified settings to the camera and closes the [Personal Function Settings] dialog box to end the procedure.
- Clicking the [Apply] button applies the specified settings to the camera without closing the [Personal Function Settings] dialog box.

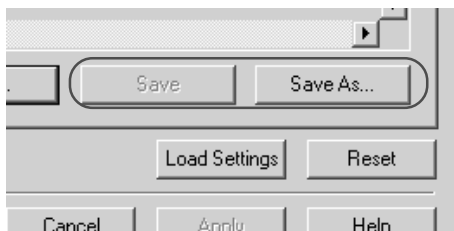


Clicking the [Load Settings] button replaces the settings with the Personal Function settings on the camera.

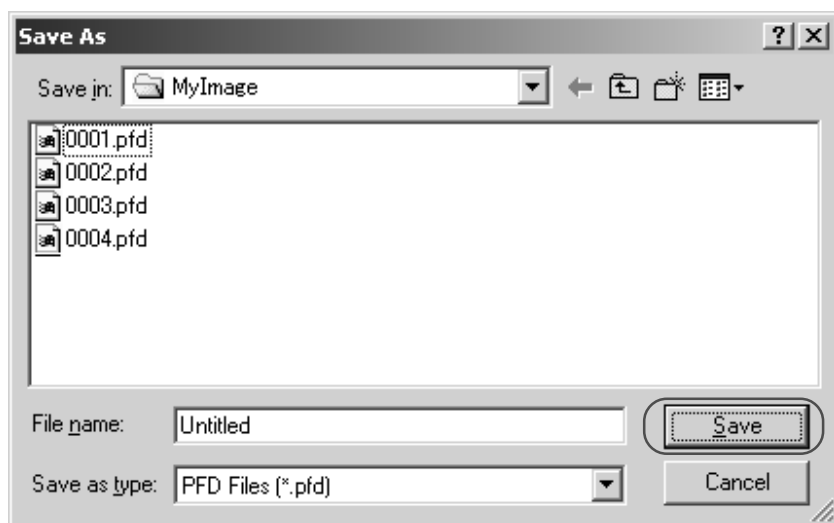
Saving the Settings

Click the [Save As] button or [Save] button.

- ➔ The specified Personal Function settings are saved.



- ➔ When you click the [Save As] button, the [Save As] dialog box appears.
- Enter the file name and select the destination folder. Then click the [Save] button.

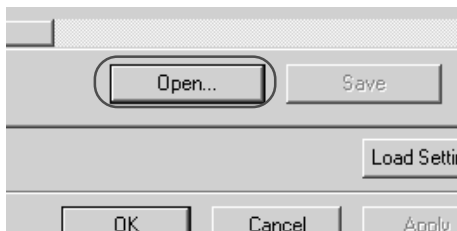


To update an existing file, click the [Save] button.

Loading Saved Settings

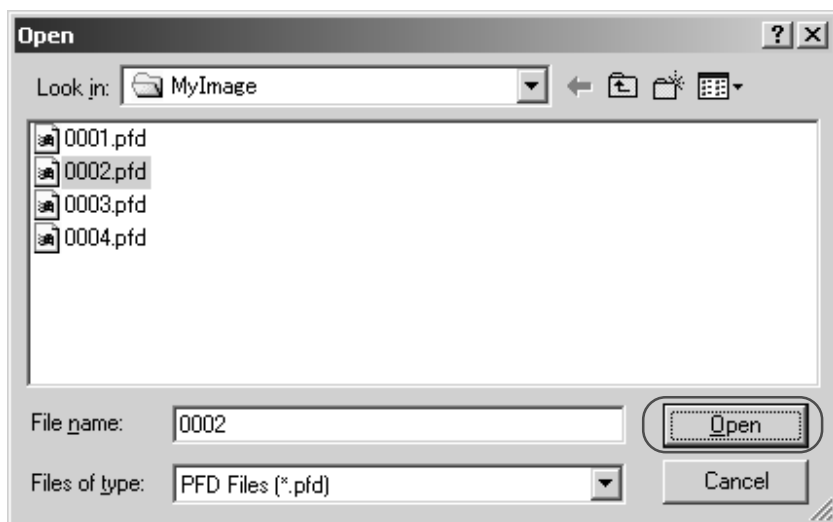
1 Open the saved settings.

- Click the [Open] button.
- ➔ The [Open] dialog box appears.



2 Load the settings.

- Open the folder containing the settings, select the file and click the [Open] button.



- ➔ The Personal Function settings data saved in that file are loaded into the computer.



Windows/Macintosh compatibility for Personal Function settings data

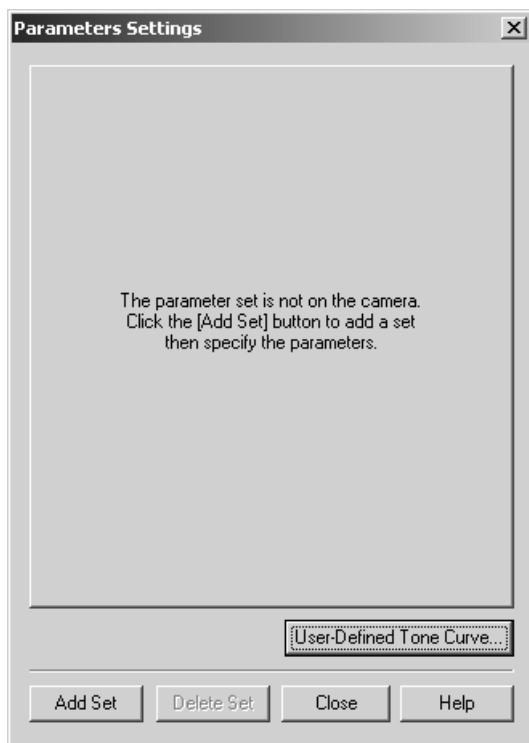
Personal Function settings data saved on your computer is compatible with both the Windows TWAIN Driver and the Macintosh Plug-In Module.

Setting the Parameters

You can set the parameters for captured images on the camera. You can register up to 3 parameters on the camera, consisting of the JPEG image quality settings, the sharpness settings and the tone curve data saved during the procedure described in “Adjusting the Color and Brightness (Adjust Tone Curve)” (→3-23). For JPEG images, all the parameters are applied. For RAW images, only the tone curve data and sharpness setting are applied. For more information on setting the parameters on the camera, see “Selecting the Processing Parameters” in the EOS-1D Instructions.

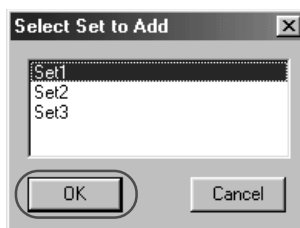
Setting the Parameters

- 1 Click the [Parameters] button.
→ The [Parameters Settings] dialog box appears.

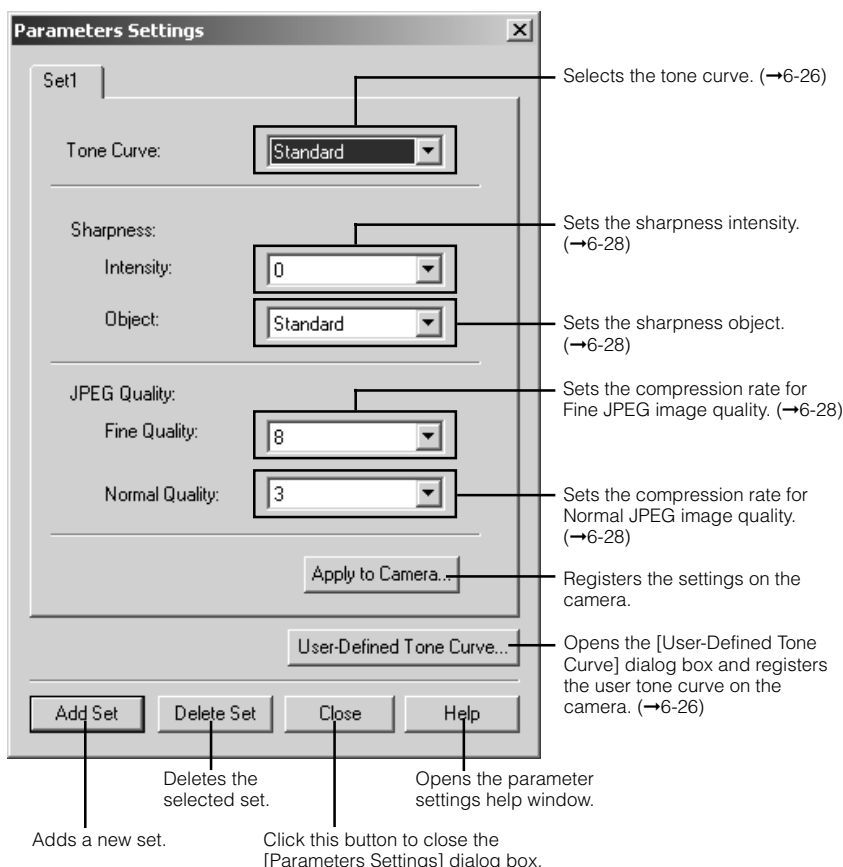


2 Add/Delete a set.

- Click the [Add Set] button.
- ➔ The [Select Set to Add] dialog box appears.
- Select the set to be added and click the [OK] button.
- ➔ The tab sheet for the selected set appears.

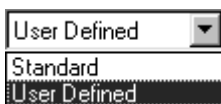


- To delete a set, select the set to be deleted and click the [Delete Set] button.
- ➔ The set is deleted.



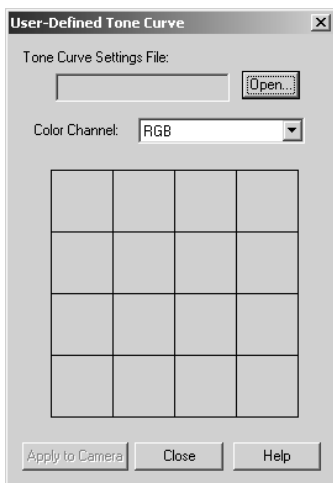
3 Select the tone curve.

- Select [Standard] or [User Defined] in the [Tone Curve] list box.
- When you select [Standard], the standard tone curve is set. Proceed to step 10.
- When you select [User Defined], the tone curve saved to your computer in “Adjusting the Color and Brightness (Adjust Tone Curve)” (→3-23) is set. Proceed to step 4.



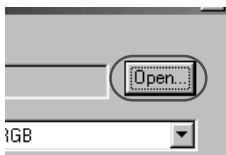
4 Click the [User-Defined Tone Curve] button.

→ The [User-Defined Tone Curve] dialog box appears.



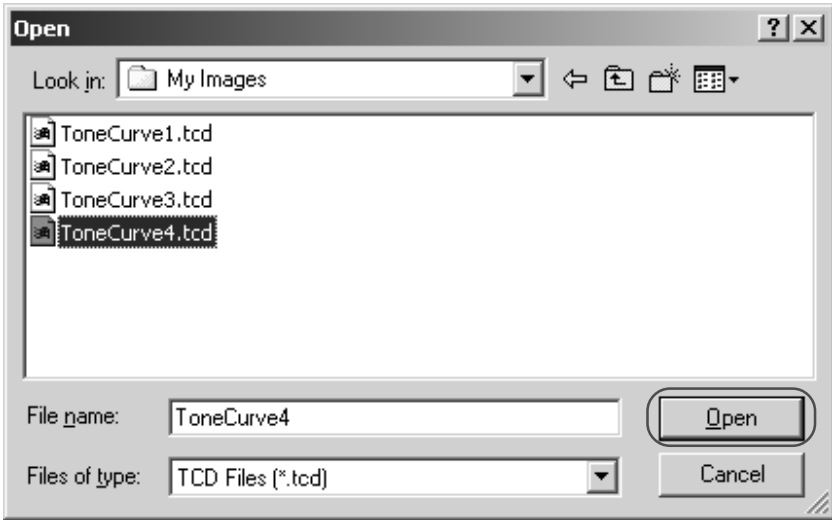
5 Click the [Open] button.

→ The [Open] dialog box appears.

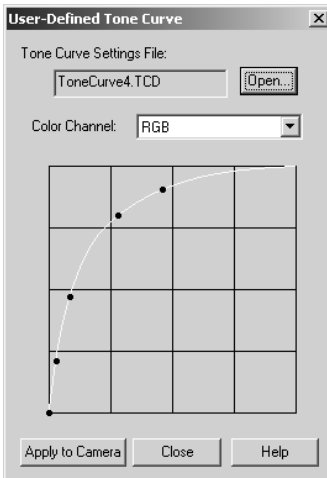


6 Load the tone curve data.

- Open the folder containing the tone curve data, select a file and click the [Open] button.



➔ The tone curve data is loaded.



7 Check the tone curve.

- Select the tone curve colors to be displayed from the [Color Channel] list box and check the colors.
- You cannot adjust the tone curve at this point. Use the procedure in “Adjusting the Color and Brightness (Adjust Tone Curve)” (→3-23) to adjust the tone curve.



8 Click the [Apply to Camera] button.

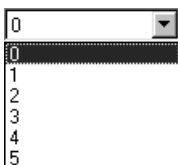
→ The tone curve to be registered on the camera is set.

9 Click the [Close] button.

→ The [User-Defined Tone Curve] dialog box closes.

10 Select the sharpness and JPEG image quality.

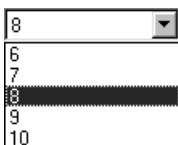
- The [Intensity] and [Object] settings are applied to both JPEG and RAW images. The [Fine Quality] and [Normal Quality] image quality settings for JPEG quality are applied to JPEG images.



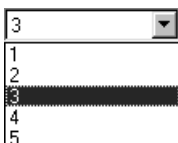
- The available [Intensity] settings are [0], [1], [2], [3], [4], and [5]. Higher values give higher levels of edge sharpening.



- The available [Object] settings are [Fine], [Medium-Fine], [Standard], [Medium-Rough], and [Rough]. If you select [Rough], the specified sharpness level is applied to subjects with a rough image pattern. If you select [Fine], the specified sharpness level is applied to subjects with a fine image pattern.



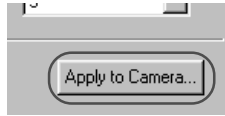
- In the [Fine Quality] setting, you can select a value of [6], [7], [8], [9] or [10]. Higher values give a lower compression ratio and higher image quality.



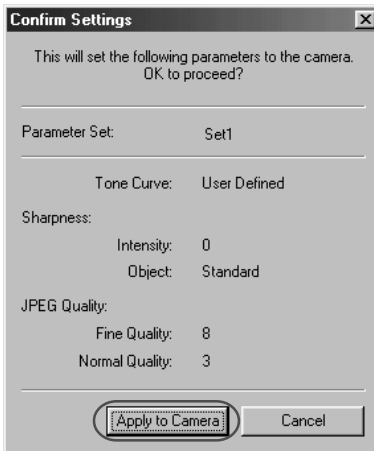
- In the [Normal Quality] setting, you can select a value of [1], [2], [3], [4] or [5]. Higher values give a lower compression ratio and higher image quality.

11 Click the [Apply to Camera] button.

→ The [Confirm Settings] dialog box appears.

**12 Check the settings and click the [Apply to Camera] button.**

→ The settings are registered on the camera and the [Confirm Settings] dialog box closes.

**13 Click the [Close] button.**

→ The [Parameters Settings] dialog box closes to end the procedure.

Selecting the Personal White Balance

Up to 3 personal white balance settings, consisting of the white balance data saved in the “Saving the White Balance” procedure (→3-29), can be registered on the camera. The registered personal white balance settings are displayed on the EOS-1D’s rear LCD panel as <PC-1> to <PC-3> (personal custom white balance 1-3). Personal white balance settings can be applied to both JPEG images and RAW images.

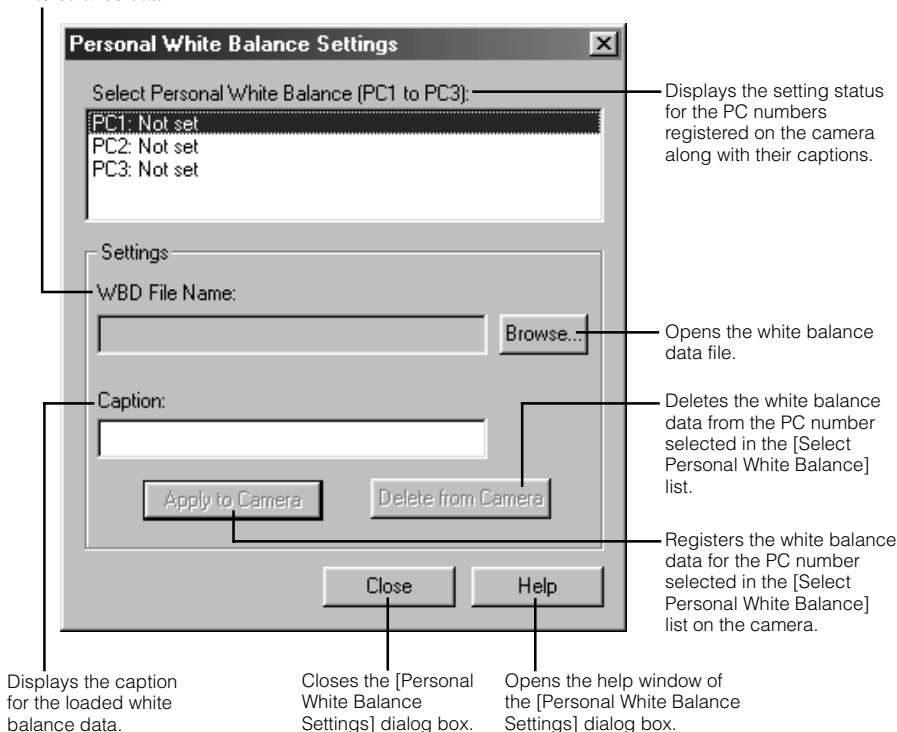
For more information on setting personal white balance settings on the camera, see “Selecting Personal White Balance” in the EOS-1D Instructions.

Selecting the Personal White Balance

1 Click the [Personal White Balance] button.

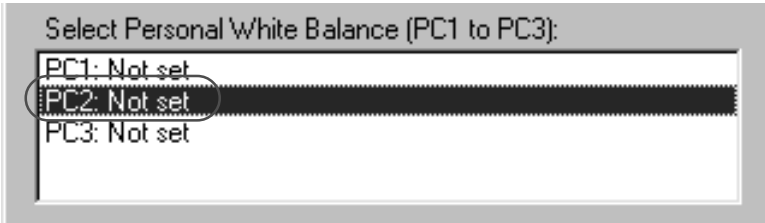
→ The [Personal White Balance Settings] dialog box appears.

Displays the file names for the loaded white balance data.



2 Select PC number.

- Select the PC number for the data to be registered from the [Select Personal White Balance] list.



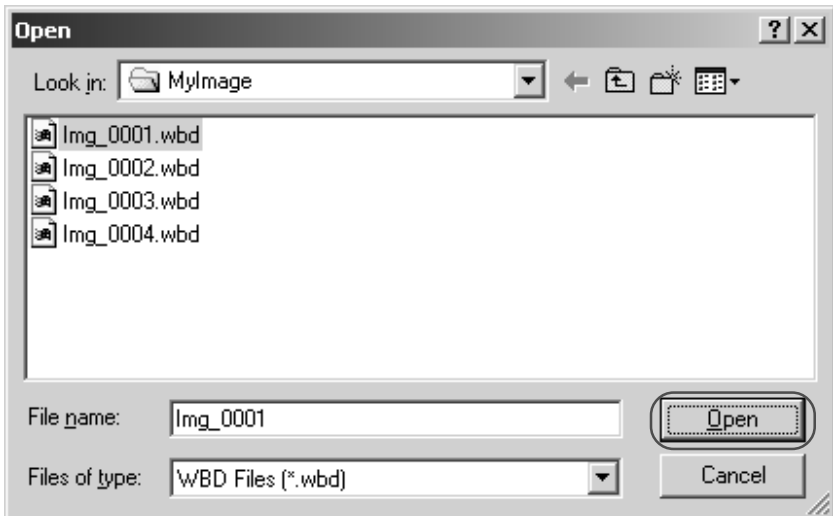
3 Click the [Browse] button.

- ➔ The [Open] dialog box appears.



4 Load the white balance data.

- Open the folder containing the saved white balance data, select a file and click the [Open] button.



- ➔ The white balance data is loaded.

5 Click the [Apply to Camera] button.

- ➔ The white balance data is registered on the camera.
- To register another personal white balance setting, repeat steps 2 to 5. You can register up to 3 settings (PC1, PC2 and PC3).
- To delete a registered PC setting, select the PC number from the [Select Personal White Balance] list and click the [Delete from Camera] button.

6 Click the [Close] button.

- ➔ The [Personal White Balance Settings] dialog box closes to end the procedure.

7

Operating the Camera from Your Computer

7

This chapter describes EOS-1D operations using the RemoteCapture software, such as remote shooting, timer shooting and interval timer shooting.

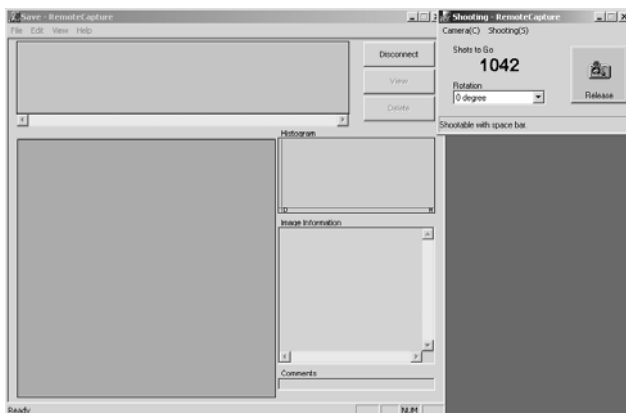
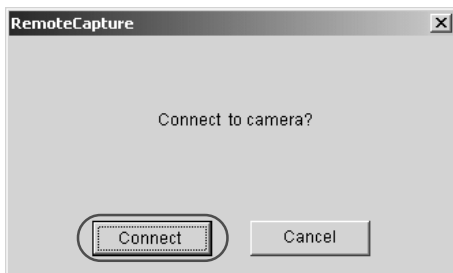
Starting RemoteCapture

- 1 Click the [Start] button and select [Programs] ([All Programs] on Windows XP) ► [Canon Utilities] ► [RemoteCapture] ► [RemoteCapture xx].

- RemoteCapture version information is displayed in xx.
- ➔ The [RemoteCapture] dialog box appears.

- 2 Click the [Connect] button.

- ➔ The Save window and Shooting window appear.



- To quit RemoteCapture, click the [Disconnect] button and select [Exit] from the [File] menu.



- If you use RemoteCapture to take pictures while you are using the WIA Driver Windows Explorer to display images on the camera, RemoteCapture may not operate correctly.
- When you are using mirror lockup to take pictures, there is a delay of approximately 2 seconds after you click the RemoteCapture [Release] button before the picture is actually taken.



- Selecting [Camera Settings] from the [Camera] menu in the Shooting window allows you to specify the camera settings. For information on how to specify the camera settings, see Chapter 6 "Specifying Camera Settings from Your Computer".

Save window

Thumbnail view

Displays thumbnail images of the shots taken.

The [RAW] symbol is displayed for RAW images. The [RAW+JPEG] symbol is displayed for RAW+JPEG images. No symbol is shown for JPEG images.

Delete button

Deletes the image selected in thumbnail view. Deleted images are completely removed from your computer. Check images carefully before deleting them.

Disconnect button

Cuts the connection to the camera.

View button

Displays the image selected in thumbnail view enlarged in a separate window.

Histogram

Shows the distribution of brightness values.

Image Information

Allows you to check the image information details.

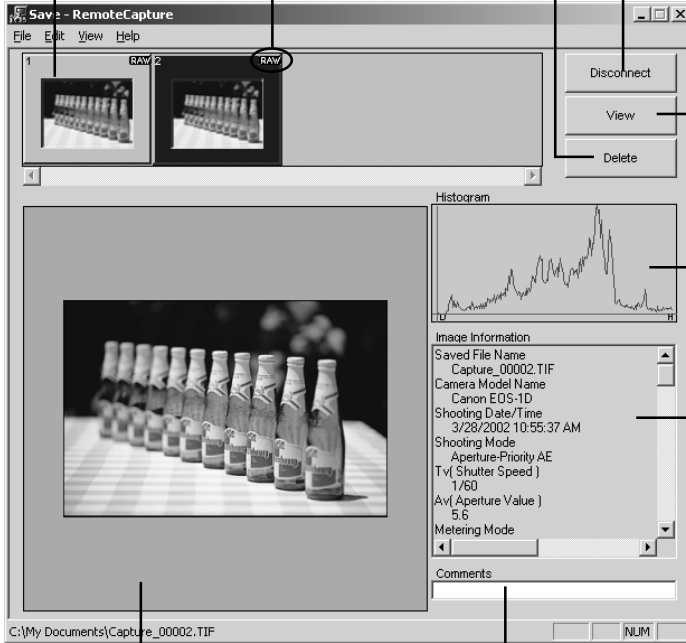


Image display area

Displays the image selected in the thumbnail view.

Comment input box

Use this field to type in a comment for the image.

Shooting window

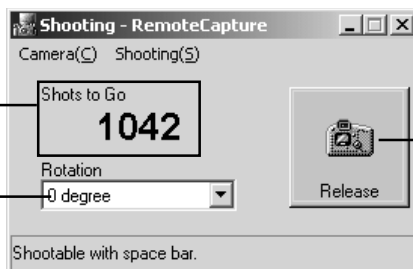
Shots to Go

This box displays the number of frames that can be saved on your computer or on the CF card in the camera.

Rotation list box

0 degree
0 degree
90 degree Right
90 degree Left

Rotate the image to be shot 90 degrees left or right.



Release button

Takes a shot with the camera. The image is automatically saved on your computer. Even when you press the shutter button on the camera, the image is saved on your computer.

Taking Shots from Your Computer

You can control the camera from your computer and take single-frame shots, timer shots and interval timer shots. The images are automatically saved on your computer.

Shots taken with RemoteCapture and saved on your computer can be displayed and image-processed in the TWAIN Driver in the same way as images shot with the camera.

Refer to the Help file for more information on using RemoteCapture.

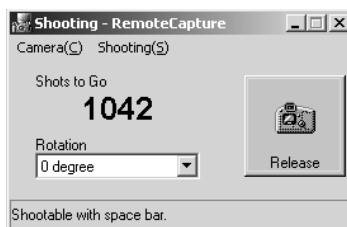
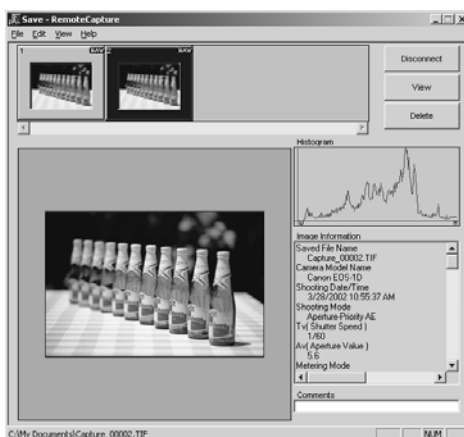
Using RemoteCapture

1 Set the camera up ready to shoot.

- Focus the camera manually (Manual focus).

2 Click the [Release] button.

→ The image is saved to your computer and displayed on the screen.



- To enlarge the image for checking, select the image and click the [View] button.
→ The image is displayed enlarged in a separate window.
- To delete the image, select the image and click the [Delete] button.
→ The image is deleted.



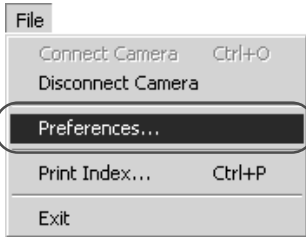
- Because RAW images are processed before being displayed, there is a short delay before the images appear.
- To load an image rotated, select [90 degree Right] or [90 degree Left] in [Rotation] list box before clicking the [Release] button.
- To rotate a downloaded image, select the image and then select [Rotate saved image 90 degrees Right] or [Rotate saved image 90 degrees Left] in the [Edit] menu.

Default Settings

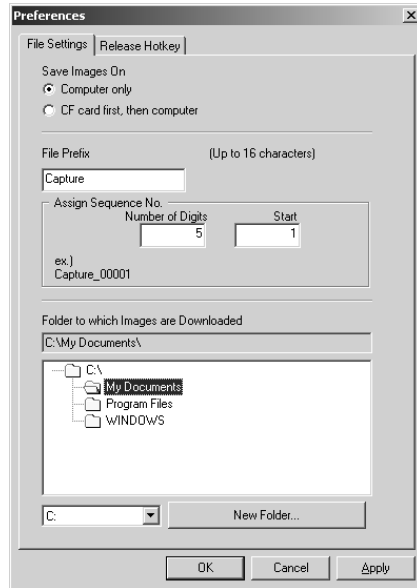
Use the procedure below to select the folder in which images will be saved and to specify the file names.

1 Select [Preferences] in the [File] menu.

→ The [Preferences] dialog box appears.

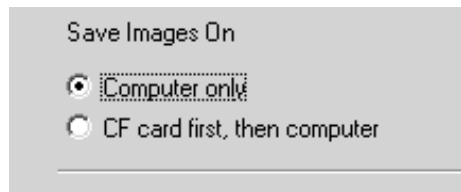


Preferences dialog box



2 Select the save destination in which images will be saved.

- Click the [Computer only] or [CF card first, then computer] radio button.



- [Computer only]
This option allows you to take shots when there is no CF card in the camera or when the CF card is full.
- [CF card first, then computer]
This option saves the images both on your computer and on the CF card in the camera.

3 Enter the file name to be used when images are saved.

File Prefix (Up to 16 characters)

Capture

Assign Sequence No.

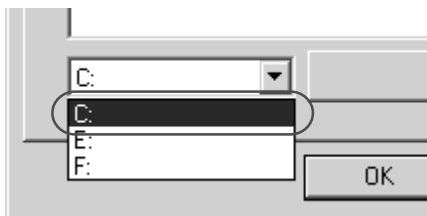
Number of Digits: 5 Start: 1

ex.) Capture_00001

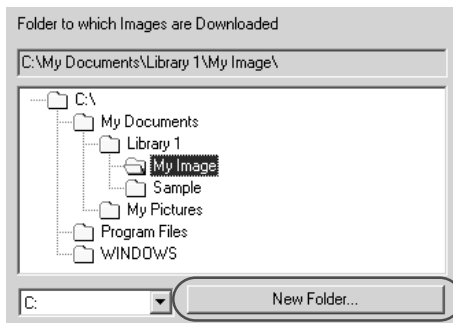
- If you enter [Capture] into [File Prefix] field, [5] into [Number of Digits], and [1] into [Start], sequential file names will be assigned automatically beginning with [Capture_00001.jpg] or [Capture_00001.tif].
- File names can include up to 16 characters.

4 Select the folder in which images will be saved.

- Select the drive and then the folder to be used for saved images.
- The path for the selected folder is displayed in the [Folder to which Images are Downloaded].



- To create a new folder in which to save images, click the [New Folder] button to create another folder inside the current folder.



5 Click the [OK] button.

- The settings are saved and the [Preferences] dialog box closes to end the procedure.



You can set the Hotkey for shutter release by selecting the [Release Hotkey] tab.

Printing Images

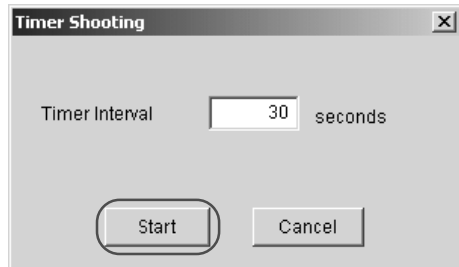
You can print images. All the images shown in the thumbnail view are printed in index format. The time of shooting and the file names are printed with the images.

- 1 Select [Print Index] in the [File] menu.**
→ The [Printer Setup] dialog box appears.
- 2 Select the printer to be used, specify the print settings and click the [OK] button.**
→ The images are printed.

Timer Shooting

Use this function to specify the timer delay. Timer shooting shots are then taken after the specified number of seconds.

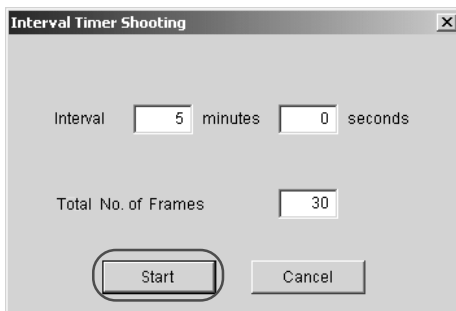
- 1 Select [Timer Shooting] in the [Shooting] menu.**
→ The [Timer Shooting] dialog box appears.
- 2 Enter a number of seconds and click the [Start] button.**
 - You can set a value between 2 and 30 seconds in 1-second increments.
 - Timer shooting are taken after the specified number of seconds.



Interval Timer Shooting

This function allows you to specify the interval between shots and the number of shots.

- 1 Select [Interval Timer Shooting] in the [Shooting] menu.**
→ The [Interval Timer Shooting Hints] dialog box appears.
- 2 Check the information in the warnings and then click the [OK] button.**
→ The [Interval Timer Shooting] dialog box appears.
- 3 Enter the shooting interval and the number of shots, and then click the [Start] button.**
 - You can set a shooting interval between 5 seconds and 60 minutes in 1-second increments.
 - You can set up to a maximum of 9999 shots.
 - Interval timer shooting is performed using the specified interval between shots and the specified number of shots.



On some types of computer, if you set a short interval between shots and there is insufficient time to download and save the images, it may not be possible to take shots at the specified interval. If this occurs, set a longer interval between shots and take the shots again.



Depending on the available capacity on your computer's hard disk, the maximum number of available shots that can be set may be less than 9999. You can check the number of shots that can be set by referring to the number of available shots shown in the Shooting window. (→7-3)

8

Working with Images in ZoomBrowser EX

This chapter explains how to use ZoomBrowser EX to perform a range of operations from downloading the camera's images to printing them.

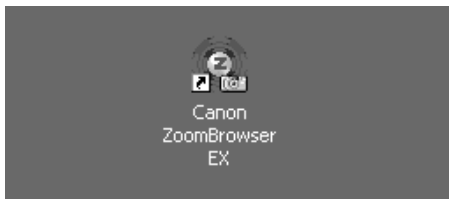
Starting ZoomBrowser EX

1 Connect the camera to your computer.

- For more information on connecting the camera to your computer, see “Connecting the Camera to Your Computer” (→2-2).
- ➔ If you are using Windows Me, the [Scanner and Camera Wizard] dialog box appears, and if you are using Windows XP, the [EOS-1D] dialog box appears. Click the [Cancel] button to close the displayed dialog box, and then proceed to step 2.

2 Click the [Start] button and then select [Programs] ([All Programs] on Windows XP) ► [Canon Utilities] ► [ZoomBrowser EX] ► [ZoomBrowser EX] to start ZoomBrowser EX.

- You can also start ZoomBrowser EX by double-clicking the [Canon ZoomBrowser EX] icon on the desktop.
- ➔ The ZoomBrowser EX main window appears.



ZoomBrowser EX auto start is not supported on Windows XP. (ZoomBrowser EX starts up from the [EOS-1D] dialog box.) When the [EOS-1D] dialog box appears after you connect the camera to the computer, click the [Cancel] button to close the dialog box. Then, click the [Start] button or the [Canon ZoomBrowser EX] icon on the desktop to start up.

The ZoomBrowser EX Window

When you start ZoomBrowser EX, the ZoomBrowser EX main window appears. Then, when the connection to the camera opens, the Camera window appears.



For more information on using ZoomBrowser EX, refer to the ZoomBrowser EX Help menu or PDF manual, ZoomBrowser EX Software User Guide.

ZoomBrowser EX main window

Tree View Area

Minimizes the control panel.

The [RAW] symbol is displayed for RAW images.

Browser Display Area

Registers the selected folder as the [Image Folder]. (→8-8)

Switches the display in the Browser Display Area to scroll mode. (→8-7)

Switches the display in the Browser Display Area to zoom mode. (→8-7)

Updates the folder. (→8-8)

Click here to connect to the camera or card reader.

Click here to select images.

Click here to enlarge or reduce images.

Displays image information.

Click here to print images.

Click here to display images.

Displays the information for the selected image.

Click here to delete images.

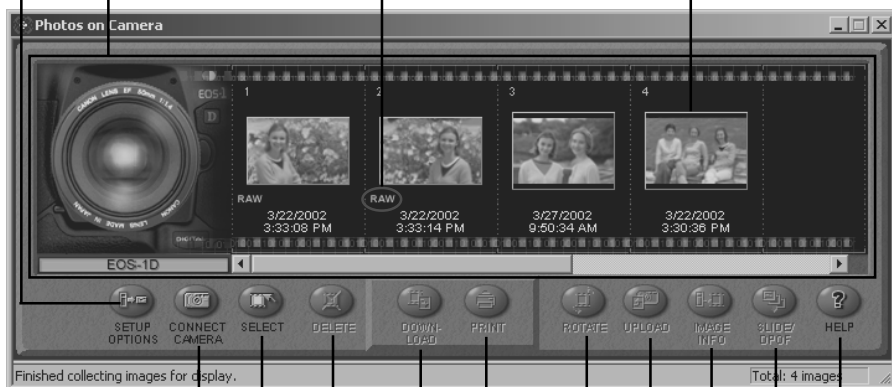
Camera window

Sets various camera settings.
See "Specifying the Camera Settings" (→6-2) for information on how to specify the settings.

An image of the connected camera or CF card will be displayed here.

The [RAW] symbol is displayed for RAW images.
The [RAW+JPEG] symbol is displayed for RAW+JPEG images. No symbol is shown for JPEG images.

Thumbnail



Reconnects the camera to your computer.

Lets you choose the image selection method.

Click here to delete images.

Downloads the selected images onto the computer.

Saves images from the computer onto the CF card in the camera.

Rotates images displayed as thumbnails.

Click here to print images.

Displays the Camera window help.

Lets you edit the slide show and DPOF print specifications.

Displays the shooting data.

Downloading and Saving Images

The procedure below describes how to download and save images from a CF card loaded in the camera or in a card reader.

1 Display the images.

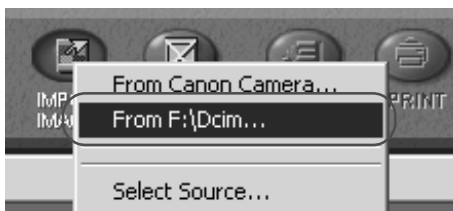
- To display the images on the camera, select [Canon Camera] in the Tree View Area.
- When you select the [CANON CAMERA] button if you are using Windows XP, the [Communication Settings] dialog box may appear. Select [IEEE1394] from the [Port Type] list box, and select [EOS-1D] from the [Detected Camera] list box, then click the [OK] button.



- ➔ In the Camera window, the images on the camera are displayed as thumbnails (reduced images).

- To display the images from a card reader, click the [IMPORT IMAGES] button and select [From Dcim] from the menu that appears.

- ➔ The images from the CF card will be displayed as thumbnails in the Camera window.



2 Create a new folder for saving images from the camera.

- In the Tree View Area, right-click the [Image Library One] folder, select [New Folder] from the menu that appears and type in a folder name.

- ➔ A new folder is created.



3 In the Tree View Area, select the newly created folder.

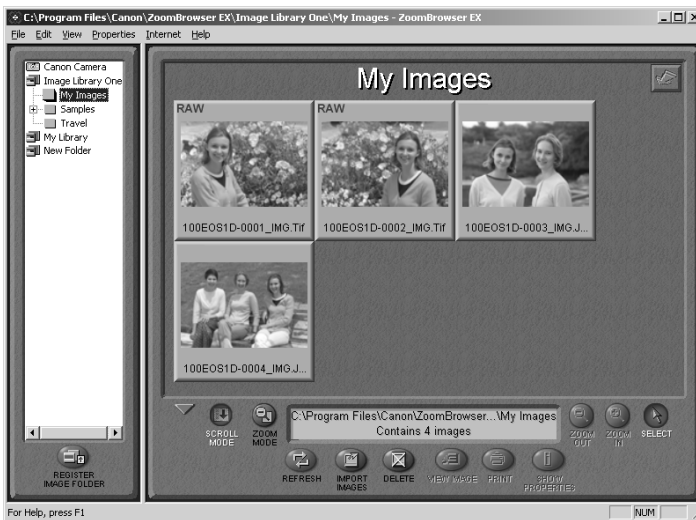


4 Select the images you wish to download from the Camera window and click the [DOWNLOAD] button.

- Click a thumbnail to select the corresponding image.




- ➔ Downloaded images are saved to the computer and appear in the Browser Display Area.



- The created folder will usually be on the [C:] drive of your hard disk in [Program Files] folder ► [Canon] folder ► [ZoomBrowser EX] folder ► [Image Library One] folder. The downloaded images are saved inside the created folder.
- You can also download images to the computer by dragging them from the Camera window and dropping them on the Browser Display Area or Tree View Area.
- To disconnect the camera, click the close box [X] at the upper right of the Camera window. The Camera window will close.
- When you download the RAW+JPEG image, both the RAW image and the JPEG image appear in the ZoomBrowser EX main window.

ZoomBrowser EX Features

The bottom of the ZoomBrowser EX main window contains the buttons that control various functions. This topic describes four of those features that are particularly convenient.

 For information on ZoomBrowser EX operations not described here, refer to the ZoomBrowser EX Help menu or PDF manual, ZoomBrowser EX Software User Guide.

Switching the Display Mode

You can change between the Zoom and Scroll modes to suit your purposes when images are displayed in the Browser Display Area.

Zoom Mode

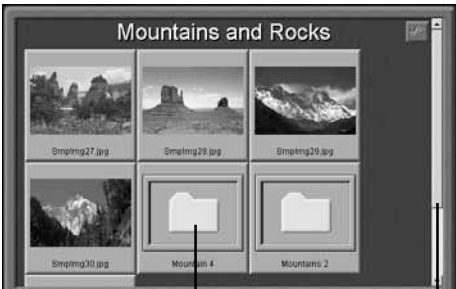
When you create a sub-folder within a folder, use this mode to display all the images inside the sub-folder too.



The images inside the sub-folders are also displayed.

Scroll Mode

Use this mode to just display the images within one folder. When there are more images than capacity of the Browser Display Area, scroll bars appear on the right of the Browser Display Area. The sub-folders only appear as folder icons in this mode.



The images inside the sub-folders are not displayed.

Scroll Bar

Registering a Folder as a Image Folder

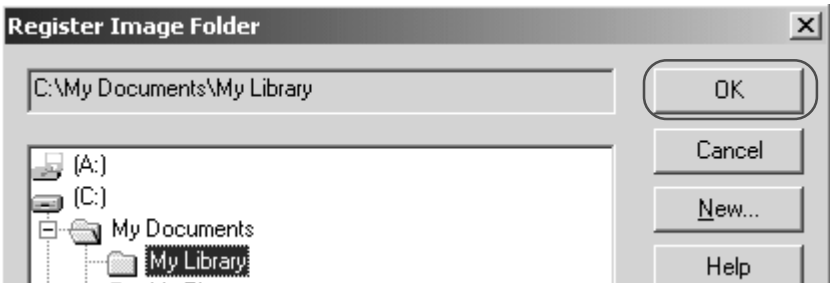
Folders shown in the Tree View Area with a [📁] symbol are called Image Folder. ZoomBrowser EX only manages the images contained in these folders and the sub-folders nested within them.

1 Click the [REGISTER IMAGE FOLDER] button.

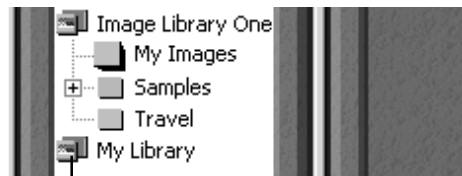
→ The [Register Image Folder] dialog box appears.



2 Select the folder you wish to register and click the [OK] button.



→ The folder will be registered as an Image Folder.



— The folder is registered as a Image Folder.

Refreshing a Folder

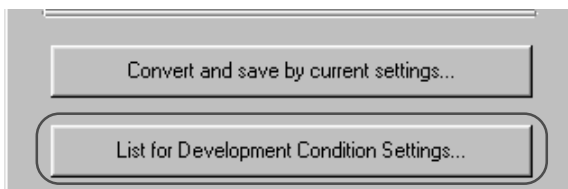
Only image files that are added, copied or edited using ZoomBrowser EX will be displayed correctly in a folder that is part of a ZoomBrowser EX image folder. If you move or copy image folders with the Windows Explorer program or edit images with another application, the information contained in ZoomBrowser EX will not be up-to-date.

To update a folder, select it and click the [REFRESH] button. This will refresh the image information and any sub-folders in the selected folder.

Processing RAW Images with ZoomBrowser EX

To process RAW images in ZoomBrowser EX, start from RAW Image Converter.

- 1 Select a RAW image.**
 - Select a RAW image from the Browser Display Area of ZoomBrowser EX main window.
- 2 Click the [File] menu and select [RAW Image Processing].**
 - ➔ The RAW Image Converter main window appears.
- 3 Click the [List for Development Condition Settings] button.**
 - ➔ The RAW image appears as a thumbnail image in the TWAIN Driver main window.
 - See “Processing RAW Images” (→3-20) for information on how to process RAW images.



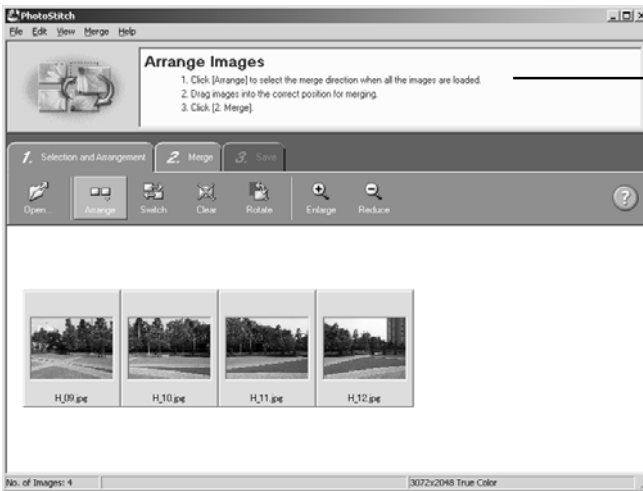
For more information on using the RAW Image Converter, see “Using RAW Image Converter” (→5-2).

Merging Panoramic Images with PhotoStitch

You can merge a series of overlapping images into a single, seamless panorama image.

Select the JPEG images in the Browser Display Area, click the [Edit] menu and select [PhotoStitch].

- ➡ PhotoStitch starts up.
- Follow the instructions in the guidance window to merge the images.
- Please refer to the PhotoStitch Help menu for more details.



Follow the instructions to merge the images.



You cannot open RAW images in PhotoStitch.

Printing Images

1 Select the image(s) you wish to print.

- Process RAW images before printing them. (→8-9)

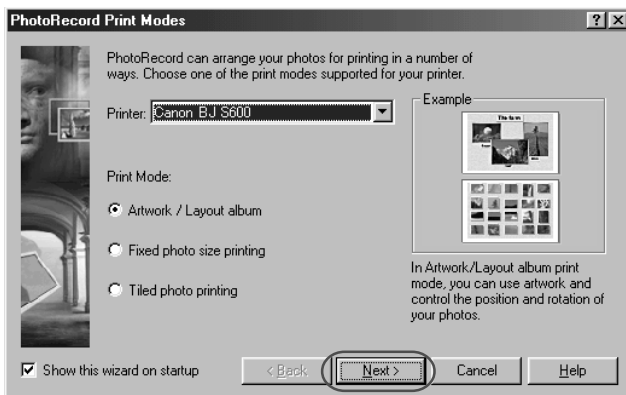
2 Click the [PRINT] button and select [Layout] from the displayed menu.

- ➔ The PhotoRecord printing utility starts up and the [PhotoRecord Print Modes] dialog box appears.



3 Select a print mode and click the [Next] button.

- Select the [Artwork/Layout album] radio button for the purposes of this example.



- ➔ The page setup window from the [PhotoRecord print mode] dialog box opens.

4 Set the paper size and other settings and click the [Next] button.

- ➔ The layout settings window from the [PhotoRecord print mode] dialog box opens.

5 Select the layout method and then press [Finish].

- ➔ The PhotoRecord window appears.
- You can use this window to specify more detailed changes to the layout.

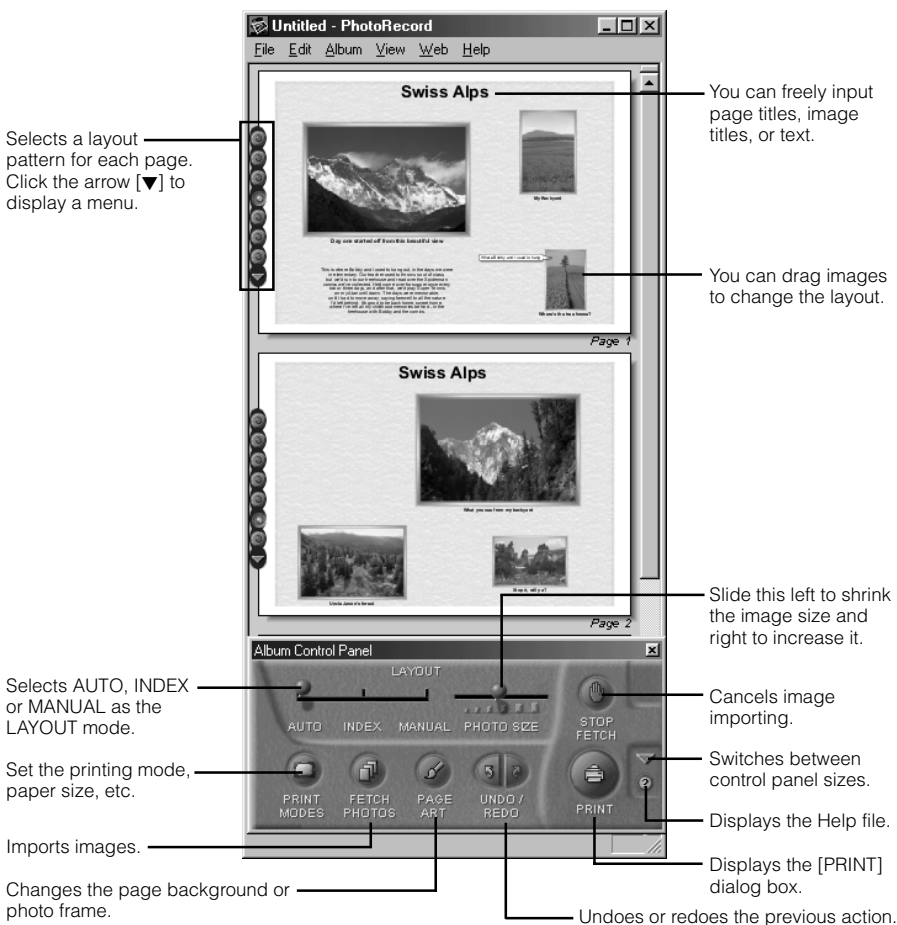
6 Click the [Print] button in the PhotoRecord window.

- ➔ The [Print] dialog box appears.

7 Click the [PRINT] button.

→ The images are printed.

PhotoRecord window



When you click the [PRINT] button in the ZoomBrowser EX main window and select [Index] from the displayed menu, the [Print Index] dialog box appears. Set the desired thumbnail size and paper size, then click the [PRINT] button to start printing the index.

When you select the [Artwork/Layout album] option, you can resize or reposition images freely for printing. The other print modes allow you to do such things as tile the images for printing or arrange them for printing on Canon perforated paper. Refer to the PDF manual, ZoomBrowser EX Software User Guide, for a detailed explanation of the print modes.

9

Troubleshooting and Uninstallation

This chapter provides a troubleshooting manual and describes the software uninstallation procedures.

Troubleshooting

When the “Could not complete installation correctly” or “Communication between the camera and computer failed” message appears, check the items described below.

Driver installation failed.

● Have you installed the EOS-1D TWAIN Driver or EOS-1D WIA Driver?

→ You cannot install the driver correctly unless the EOS-1D TWAIN Driver or EOS-1D WIA Driver is already installed. Insert the SOLUTION DISK into the CD-ROM drive and install the EOS-1D TWAIN Driver or EOS-1D WIA Driver.

● Is the cable firmly plugged into its socket?

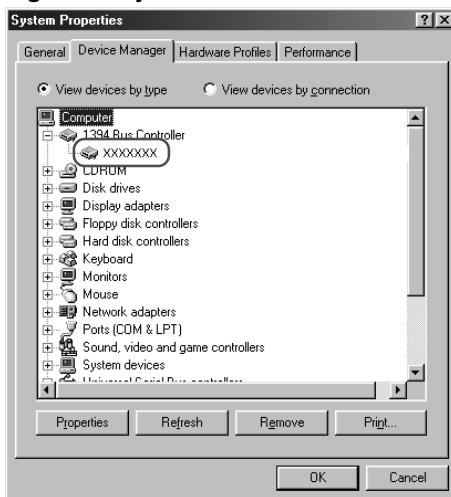
→ Ensure that the plug on the interface cable is securely plugged into the IEEE1394 port on your computer. (→2-2)

● Is your PC's IEEE1394 device operating normally?

Open the [Device Manager] (→9-5), click the plus symbol [+] to the left of [1394 Bus Controller] and check that [XXXXXXX] is displayed.

→ If [XXXXXXX] is not displayed, plug & play is not possible using the IEEE1394 connection because the IEEE1394 device is not operating normally. Refer to the user manuals supplied with your PC for information on diagnosing and correcting the problem.

([XXXXXXX] displays the name of your IEEE1394 device.)



I have installed the TWAIN Driver or WIA Driver but the camera and computer cannot communicate.

● Does your computer comply with these requirements?

→ The system has a built-in OHCI-compatible IEEE1394 port and it comes with Windows 98 Second Edition, Windows Me, Windows 2000 or Windows XP preinstalled. (Not compatible with upgraded machines.)

* The IEEE1394 interface is not supported for systems not complying with the above conditions.

● Are the camera and computer connected correctly?

→ Connect the camera to your computer correctly using the interface cable. (→2-2)

● Is there sufficient charge left in the camera battery?

→ Your computer does not supply power to the camera. Connect the DC Coupler Kit to the camera or load a fully charged battery into the camera before connecting it to your computer. (→ "Inserting and Removing the Battery" in the EOS-1D Instructions.)

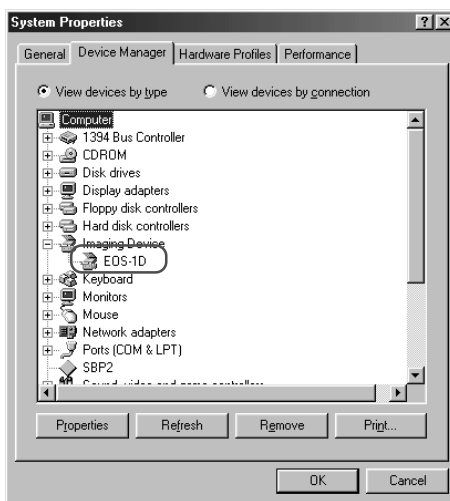
● Do you have more than one interface cable connected?

If you connect more than one interface cable to the same computer, the driver and camera may not operate normally.

→ Shut down the EOS-1D TWAIN Driver or EOS-1D WIA Driver and disconnect all the interface cables. Then reconnect just the interface cable that connects the camera to your computer.

● Is the driver operating normally?

Open the [Device Manager] (→9-5). Click the plus symbol [+] to the left of [Imaging Device] and check that [EOS-1D] is displayed.



→ If [EOS-1D] does not appear, the driver is not operating normally. Briefly disconnect and then reconnect the interface cable, ensuring that the connection is secure. If [EOS-1D] still does not appear, use the following procedure to re-install the driver.

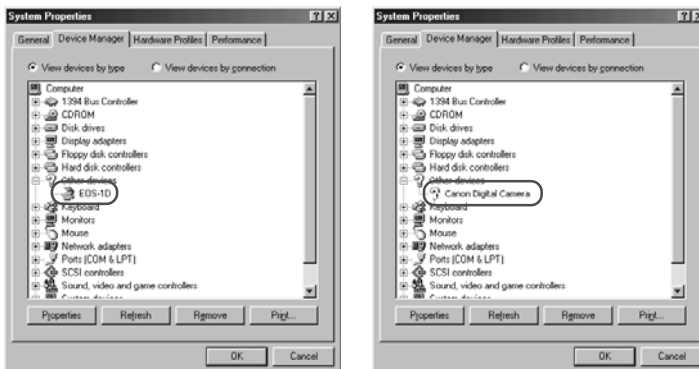
- 1 Disconnect the interface cable and uninstall the driver. (→9-7)
- 2 Re-install the driver. (→1-2)
- 3 After installation ends, restart your computer.
- 4 Following the restart, connect the camera to your computer using the interface cable. (→2-2)
- 5 Finish driver installation. (→1-5)

→ When the [X], [!] or [?] symbol is displayed beside [EOS-1D], part of the driver is missing or corrupted. Use the following procedure to re-install the driver.

- 1 Delete [EOS-1D] displayed in [Imaging Device].
- 2 Disconnect the interface cable and uninstall the driver. (→9-7)
- 3 Re-install the driver. (→1-2)
- 4 After installation ends, restart your computer.
- 5 Following the restart, connect the camera to your computer using the interface cable. (→2-2)
- 6 Finish driver installation. (→1-5)

● Is the driver installed correctly?

Open [Device Manager] (→9-5). Click the plus symbol [+] to the left of [Other devices] or [Unknown devices] and check whether [EOS-1D] or [Canon Digital Camera] is displayed.



→ If [EOS-1D] or [Canon Digital Camera] is displayed in [Other devices] or [Unknown devices], the driver was not installed correctly.

Use the following procedure to re-install the driver.

- 1 Delete [EOS-1D] or [Canon Digital Camera] displayed in [Other devices] or [Unknown devices].
- 2 Disconnect the interface cable and uninstall the driver. (→9-7)
- 3 Re-install the driver. (→1-2)
- 4 After installation ends, restart your computer.
- 5 Following the restart, connect the camera to your computer using the interface cable. (→2-2)
- 6 Finish driver installation. (→1-5)

To Display the Device Manager

● Windows 98 SE and Windows Me

- Click the [Start] button and select [Settings] ► [Control Panel]. Then double-click the [System] icon to open the [System Properties] dialog box and select the [Device Manager] tab.

● Windows 2000

- Click the [Start] button and select [Settings] ► [Control Panel]. Then double-click the [System] icon to open the [System Properties] dialog box, select the [Hardware] tab and click the [Device Manager] button.

● Windows XP

- Click the [Start] button and select [Control Panel] ► [Performance and Maintenance] ► [System]. Then select the [Hardware] tab and click the [Device Manager] button.

Uninstallation Procedure

- Before beginning the software uninstallation, close any other software you are using and disconnect the interface cable from your computer.

Uninstalling the Software

The following explanation uses the procedures for uninstalling ZoomBrowser EX as an example for uninstalling other programs as well.

- If you have uninstalled ZoomBrowser EX because of a corrupt database file or other problem, please also delete the [Database] folder, which can be found within the [My Computer] ► [C:] ► [Program Files] folder ► [Canon] folder ► [ZoomBrowser EX] folder.
- For information on uninstalling the TWAIN Driver or WIA Driver, see “Uninstalling the Driver”. (→9-7)
- Windows 2000 or Windows XP Professional users should log on with [Administrator] privileges.
- To prevent computer malfunctions, always restart your computer after you have uninstalled the software. Re-installing the software without first restarting your computer is particularly likely to result in computer malfunctions.

1 Click the [Start] button and select [Programs] ([All Programs] on Windows XP) ► [Canon Utilities] ► [ZoomBrowser EX] ► [ZoomBrowser EX Uninstall].

2 Proceed with the uninstallation as directed by the on-screen messages.

➡ Software is uninstalled.



When uninstallation ends, restart your computer.

Uninstalling the Driver

To uninstall the driver, you must first uninstall the [EOS-1D TWAIN Driver] or [EOS-1D WIA Driver], then remove [EOS-1D] from the [Scanners and Cameras Properties] dialog box or the [Scanners and Cameras] dialog box, and then delete the driver settings files.

- Windows 2000 or Windows XP Professional users should log on with [Administrator] privileges.
- To prevent computer malfunctions, always restart your computer after you have uninstalled the driver. Re-installing the driver without first restarting your computer is particularly likely to result in computer malfunctions.

1 Uninstall [EOS-1D TWAIN Driver] or [EOS-1D WIA Driver].

- If you are using Windows 98 SE or Windows 2000, click the [Start] button and then select [Programs] ► [Canon Utilities] ► [EOS-1D TWAIN Driver] ► [TWAIN Driver Uninstall].
- If you are using Windows Me or Windows XP, click the [Start] button and then select [Programs] ([All Programs] on Windows XP) ► [Canon Utilities] ► [EOS-1D WIA Driver] ► [WIA Driver Uninstall].

2 Proceed with the uninstallation as directed by the on-screen messages.

➔ The driver is uninstalled.

3 Connect the camera to your computer.

- When the [Scanner and Camera Wizard] dialog box or the [EOS-1D] dialog box appears when you are using Windows Me or Windows XP, click the [Cancel] button to close the displayed dialog box.

4 Click the [Start] button and then select [Settings] ► [Control Panel].

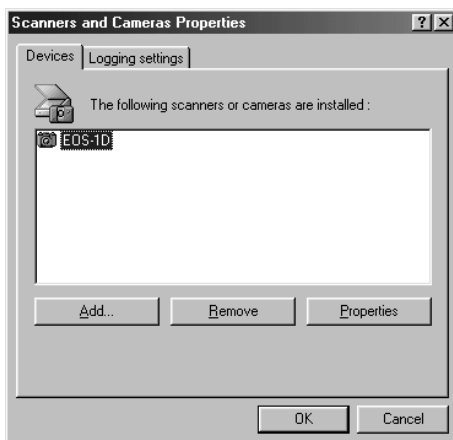
- Windows XP users should click the [Start] button and then click [Control Panel] ► [Printers and Other Hardware].

5 Double-click the [Scanners and Cameras] icon.

- Windows XP users should click the [Scanners and Cameras].
- ➔ If you are using Windows 98 SE or Windows 2000, the [Scanners and Cameras Properties] dialog box appears. If you are using Windows Me or Windows XP, the [Scanners and Cameras] dialog box appears.

6 Remove [EOS-1D].

- If you are using Windows 98 SE or Windows 2000, select [EOS-1D] and click the [Remove] button.
- If you are using Windows Me or Windows XP, select and right-click [EOS-1D] and then select [Delete] from the menu that appears. When the confirmation message appears, click the [Yes] button.
- Once [EOS-1D] is no longer displayed in the [Scanners and Cameras Properties] dialog box or the [Scanners and Cameras] dialog box, close the dialog box and proceed as follows.



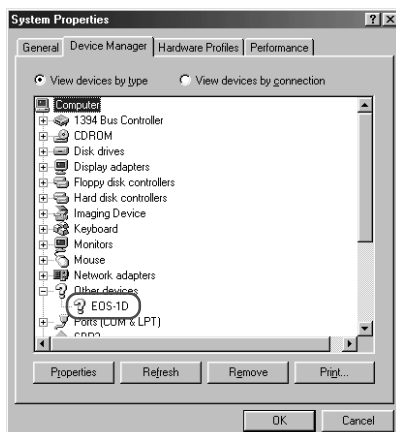
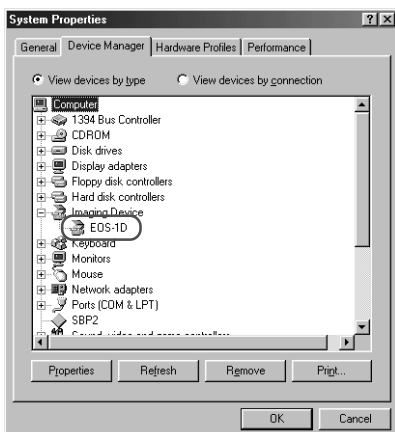
- If drivers for other devices such as scanners are already installed, those device names are displayed.
- In Windows Me and Windows XP, the icons for the installed cameras and scanners are displayed.

7 Open [Device Manager].

- See "To Display the Device Manager" (→9-5) for instructions on how to display the Device Manager.

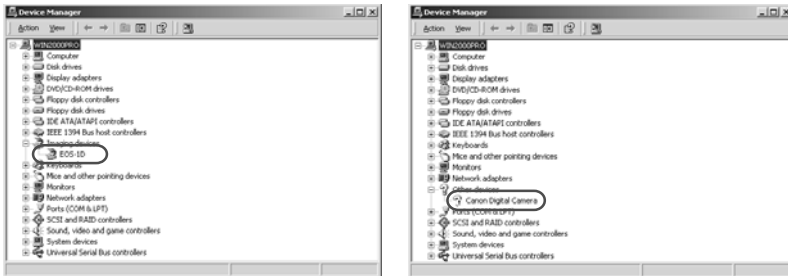
8 Delete [EOS-1D] or [Canon Digital Camera].

For Windows 98 SE and Windows Me users:



- If [EOS-1D] or [Canon Digital Camera] is displayed when you click the plus symbol [+] to the left of [Imaging Device] or [Other devices], select [EOS-1D] or [Canon Digital Camera] and click the [Remove] button.
- When the confirmation message appears, click the [OK] button.
- Click the [OK] button to close the [System Properties] dialog box.
- If [EOS-1D] or [Canon Digital Camera] is displayed in both [Imaging Device] and [Other devices], or is displayed more than once in [Other devices], delete all the occurrences.
- When [EOS-1D] or [Canon Digital Camera] is not displayed in [Imaging Device] or [Other devices], close the dialog box and proceed as follows.

For Windows 2000 and Windows XP users:



- If [EOS-1D] or [Canon Digital Camera] is displayed when you click the plus [+] symbol to the left of [Imaging devices] or [Other devices], select and right-click [EOS-1D] or [Canon Digital Camera] and select [Uninstall] from the menu that appears.
- When the confirmation message appears, click the [OK] button.
- Close [Device Manager], and click the [OK] button to close the [System Properties] dialog box.
- If [EOS-1D] or [Canon Digital Camera] is displayed in both [Imaging devices] and [Other devices], or is displayed more than once in [Other devices], delete all the occurrences.
- When [EOS-1D] or [Canon Digital Camera] is not displayed in [Imaging devices] or [Other devices], close the dialog box and proceed as follows.

9 Delete the driver settings files.

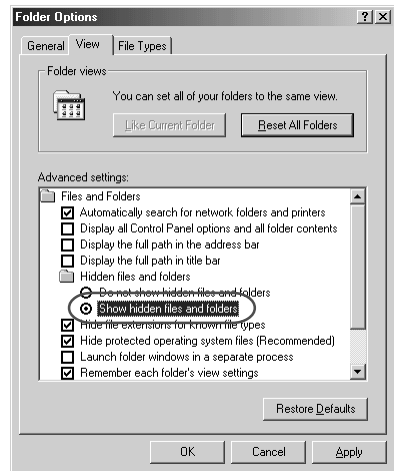
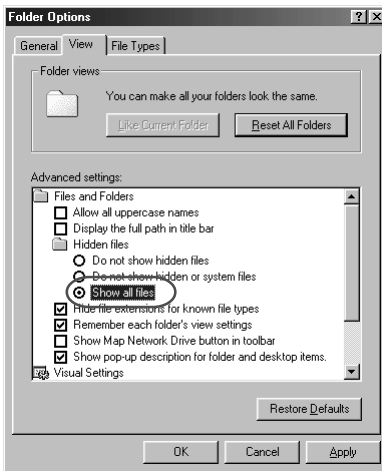
- The method for deleting the settings files differs depending on your operating system software. Refer to the information on the following pages to delete the settings files.
 - Windows 98 SE, Windows Me (→9-10)
 - Windows 2000 (→9-12)
 - Windows XP (→9-14)

Deleting the Driver Settings Files

Mistakenly deleting the wrong files can cause Windows to malfunction. Check the file names carefully before deleting any files.

For Windows 98 SE and Windows Me users:

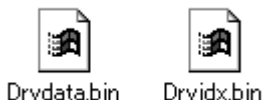
- 1 Click the [Start] button and select [Settings] ► [Folder Options].**
 - Windows Me users should click the [Start] button and select [Settings] ► [Control Panel]. Then double-click the [Folder Options] icon.
 - ➔ The [Folder Options] dialog box appears.
- 2 Select the [View] tab.**
 - ➔ The [View] tab sheet appears.
- 3 Select the [Show all files] radio button in [Hidden files].**
 - Windows Me users should select the [Show hidden files and folders] radio button in [Hidden files and folders].
 - If you have already selected this option, proceed without changing it.



- 4 Click the [OK] button to close the [Folder Options] dialog box.**
 - ➔ Previously hidden files and folders are now visible.

5 In the [My Computer] window on the desktop, double-click [C:] ► [Windows] folder ► [Inf] folder to open.

6 Delete [Drvdata.bin] and [Drvidx.bin].



7 Double-click the [Other] folder in the [Inf] folder to open.

8 Delete the [Canon.IncCAP_1D.INF] file.

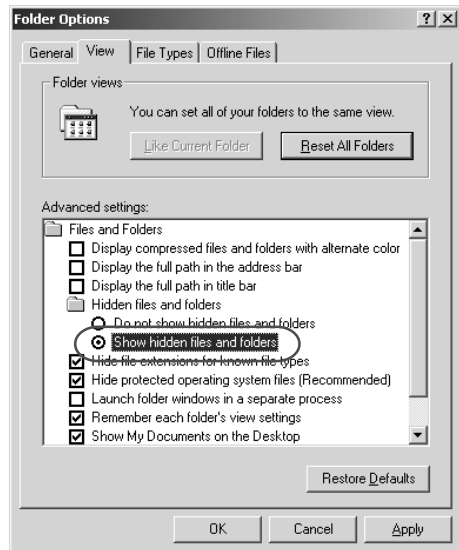


The [Inf] folder contains a large number of files. Deleting the wrong files could, at worst, prevent Windows from starting up. When you delete files, check the file names very carefully before proceeding.

For Windows 2000 users:

- 1** Click the [Start] button and select [Settings] ► [Control Panel].
- 2** Double-click the [Folder Options] icon.
→ The [Folder Options] dialog box appears.
- 3** Select the [View] tab.
→ The [View] tab sheet appears.
- 4** Select the [Show hidden files and folders] radio button in [Hidden files and folders].

- If you have already selected this option, proceed without changing it.



- 5** Click the [OK] button to close the [Folder Options] dialog box.
→ Previously hidden files and folders are now visible.

6 In the [My Computer] window on the desktop, open [C:] ► [WINNT] folder ► [inf] folder.

7 Search for files called [Oem*] or [Oem*.pnf].

- Substitute a number such as 0 or 1 for the asterisk (*). Also, because [Oem*] and [Oem*.pnf] files come in pairs, substitute the same number for the asterisk in each pair (e.g. Oem0 and Oem0.pnf).
- The [Inf] folder may contain multiple pairs of [Oem*] files.

8 Check the contents of the [Oem*] files.

- Double-click an [Oem*] file to display the file contents. Check that [;*** **Canon Digital Camera USB Setup File ******] appears on the first line.
- If there are multiple [Oem*] files, repeat this procedure.
- Once you have identified the target file or files, make a note of the file names.

9 Delete the [Oem*] and [Oem*.pnf] files you identified.



The [Inf] folder contains a large number of files. Deleting the wrong files could, at worst, prevent Windows from starting up. When you delete files, check the file names very carefully before proceeding.

For Windows XP users:**1 Click the [Start] button and select [Control Panel] ► [Appearance and Themes] ► the [Folder Options] icon.**

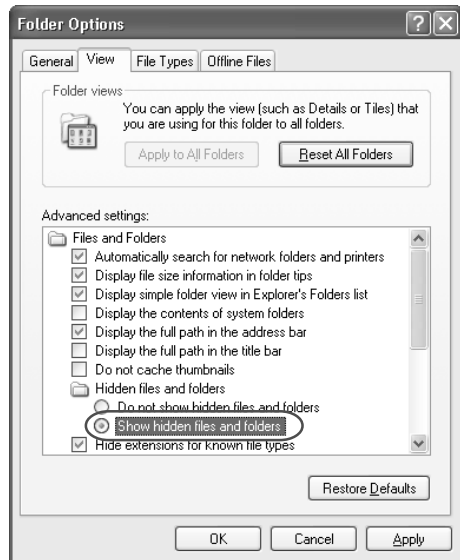
➔ The [Folder Options] dialog box appears.

2 Select the [View] tab.

➔ The [View] tab sheet appears.

3 Select the [Show hidden files and folders] radio button in [Hidden files and folders].

- If you have already selected this option, proceed without changing it.

**4 Click the [OK] button to close the [Folder Options] dialog box.**

➔ Previously hidden folders and files now become visible.

- 5 Click the [Start] button and then [My Computer].
- 6 Double-click [C:] drive ► [WINDOWS] folder ► [Inf] folder to open.
- 7 Search for files called [Oem*] or [Oem*.pnf].
 - Substitute a number such as 0 or 1 for the asterisk (*). Also, because [Oem*] and [Oem*.pnf] files come in pairs, substitute the same number for the asterisk in each pair (e.g. Oem0 and Oem0.pnf).
 - The [Inf] folder may contain multiple pairs of [Oem*] files.
- 8 Check the contents of the [Oem*] files.
 - Double-click an [Oem*] file to display the file contents. Check that [;*** Canon Digital Camera IEEE1394 Setup File ****] appears on the first line.
 - If there are multiple [Oem*] files, repeat this procedure.
 - Once you have identified the target file or files, make a note of the file names.
- 9 Delete the [Oem*] and [Oem*.pnf] files you identified.



The [Inf] folder contains a large number of files. Deleting the wrong files could, at worst, prevent Windows from starting up. When you delete files, check the file names very carefully before proceeding.

Uninstalling Photoshop 5.0 LE

- Before beginning the software uninstallation, close any other programs you are using and disconnect the interface cable from your computer.
-

Uninstall Photoshop 5.0 LE as follows.

- Click the [Start] button and select [Programs] ([All Programs] on Windows XP) ► [Adobe] ► [Photoshop 5.0 Limited Edition] ► [Uninstall Photoshop 5.0 Limited Edition].
- Proceed with the uninstallation as directed by the on-screen messages.



When uninstallation ends, restart your computer.

Index

A

- About Box button 3-5
- Adjust Tone Curve 3-23
- Adjust Tone Curve button 3-5, 3-23
- Adjust Tone Curve dialog box 3-23
- AF Frame Display button 3-4, 3-12

C

- Camera Connection button 3-5, 3-6
- Camera Settings button 3-4, 6-2
- Camera Settings dialog box
 - Basic Settings tab sheet 6-3
 - Detailed Settings tab sheet 6-5
- Camera window 8-4
- CF Card Folder Structure and File Names 2-4
- Checking the AF Point 3-12
- Checking the Personal Function Settings 6-21
- Checkmark button 3-5, 3-15
- Click White Balance button 3-5, 3-28
- Click White Balance checkbox 3-5, 3-28
- Click White Balance Function 3-28
- Color Matrix 3-17, 3-21
- Color Matrix list box 3-5, 3-21
- Color Temperature 3-27
- Comment input box 3-4, 3-17

D

- Digital Exposure Compensation 3-22
- Digital Exposure Compensation button 3-5, 3-22
- Display Mode list box 3-4, 3-10
- Display Size list box 3-4, 3-12

E

- Erase button 3-5, 3-19
- Exit button 3-3, 3-5, 3-42

I

- Image Display Format list box 3-4, 3-9
- Image Display Formats 3-8
- Image information display area 3-4, 3-17
- Image recording formats and image processing options 3-14
- Image Transfer Mode list box 3-4, 3-41
- Index Sheet Transfer Options dialog box 3-41
- IPTC 3-30
- IPTC Information button 3-4, 3-30
- IPTC information dialog box
 - IPTC-1 tab sheet 3-31
 - IPTC-2 tab sheet 3-32
 - IPTC-3 tab sheet 3-33

J

- JPEG Preview 3-11

L

- Loading the Saved Personal Function Settings 6-23

O

- Open Folder button 3-5, 3-7

P

- Parameters button 6-5, 6-24
- Parameters Settings dialog box 6-24
- Personal Function settings list 6-7
- Personal Functions button 6-5, 6-6
- Personal White Balance button 6-5, 6-30
- Personal White Balance Settings dialog box 6-30
- PhotoRecord VII
- PhotoRecord window 8-12
- Photoshop 5.0 LE VIII
- PhotoStitch VIII
- Play Sound button 3-5, 3-18
- Preferences button 3-4, 3-38
- Preferences dialog box 7-5

Preferences dialog box

General Settings tab sheet	3-38
RAW Image Processing settings tab sheet	3-39
Preview	3-11
Protect button	3-5, 3-16

R

RAW Image Converter	VIII
RAW Image Converter main window	5-2
RemoteCapture	VIII
Save window	7-3
Shooting window	7-3
Remove Checkmark button	3-5, 3-15
Remove Protect button	3-5, 3-16
Rotate left 90 degrees button	3-4, 3-18
Rotate right 90 degrees button	3-4, 3-18

S

Save File button	3-5, 3-35
Save File dialog box	3-36
Save White Balance Settings button	3-5, 3-29
Saving the Personal Function Settings	6-22
Scroll Mode	8-7
Select button	3-5, 3-17
Select image folder display area	3-4, 3-6
Setting the Date and Time	6-4
Setting the Owner's Name	6-4

T

Thumbnail display	3-10
To Display the Device Manager	9-5
Tone Curve	3-25
Transfer Image button	3-5, 3-41
TWAIN Driver	VII
TWAIN Driver main window	3-4

W

White Balance	3-26
White Balance list box	3-5, 3-26
White Balance Value input box	3-5, 3-27
WIA Driver	VII

Z

Zoom Mode	8-7
ZoomBrowser EX	VII
ZoomBrowser EX main window	8-3

Adobe Customer Support

Adobe Systems Inc. technical support information is available in the PDF file format on the supplied CD-ROM.

PDF File Location and Opening Instructions

Place the Adobe Photoshop LE CD-ROM in the drive and double-click the [My Computer] icon on the Windows desktop, followed by the [Photosle] CD-ROM icon. The window will show folders with language names. Double-click the appropriate language folder and the [Support.pdf] file within it.

- To read PDF files, Adobe Acrobat Reader must already be installed on your computer. An installer for this program is on the Adobe Photoshop LE CD-ROM within each language folder in a folder labeled [Acroread].



CANON INC. 30-2, Shimomaruko 3-chome, Ohta-ku, Tokyo 146-8501, Japan

U.S.A. _____ CANON U.S.A. INC.

For all inquiries concerning this camera, call toll free in the U.S.
1-800-OK-CANON or write to: Customer Relations, Canon U.S.A., Inc.
One Canon Plaza, Lake Success, N.Y. 11042-1198

CANADA _____ CANON CANADA INC. HEADQUARTERS

6390 Dixie Road, Mississauga, Ontario L5T 1P7, Canada

CANON CANADA INC. MONTREAL BRANCH

5990, Côte-de-Liesse, Montréal Québec H4T 1V7, Canada

CANON CANADA INC. CALGARY OFFICE

2828, 16th Street, N.E. Calgary, Alberta T2E 7K7, Canada

For all inquiries concerning this camera, call toll free in Canada
1-800-OK-CANON

EUROPE, _____ CANON EUROPA N.V.

AFRICA & MIDDLE EAST Bovenkerkerweg 59-61, P.O. Box 2262, 1180 EG Amstelveen,
The Netherlands

CANON COMMUNICATION & IMAGE FRANCE S.A.

102, Avenue du Général de Gaulle 92257 La Garenne-Colombes Cedex, France

CANON UK LTD.

Woodhatch Reigate Surrey RH2 8BF, United Kingdom

CANON DEUTSCHLAND GmbH

Europark Fichtenhain A10, 47807 Krefeld, Germany

CANON ITALIA S.p.A.

Palazzo L, Strada 6, 20089 Rozzano, Milanofiori, Milano, Italy

CANON Benelux N.V./S.A.

Bessenveldstraat 7, 1831 Diegem (Machelen), Belgium

CANON Schweiz AG

Geschäftsbereich Wiederverkauf, Industriestrasse 12, CH-8305 Dietlikon,
Switzerland

CANON G. m. b. H.

Oberlaaerstrasse 233, 4th floor, 1100 Wien, Austria

CANON España, S. A.

C/Joaquín Costa, 41, 28002 Madrid, Spain

SEQUE Soc. Nac. de Equip., Lda.,

Praça da Alegria, 58, 2º, 1269-149 Lisboa, Portugal

CENTRAL & _____ CANON LATIN AMERICA, INC. DEPTO DE VENTAS

SOUTH AMERICA 703 Waterford Way Suite 400 Miami, FL 33126 U.S.A.

CANON LATIN AMERICA, INC. CENTRO DE SERVICIO Y REPARACION

Apartado 2019, Zona Libre de Colón, República de Panamá

ASIA _____ CANON HONGKONG CO., LTD.

9/F, The Hong Kong Club Building, 3A Chater Road, Central, Hong Kong

CANON SINGAPORE PTE. LTD.

79 Anson Road, #09-01 / 06, Singapore 079906

OCEANIA _____ CANON AUSTRALIA PTY. LTD.

1 Thomas Holt Drive, North Ryde, N.S.W. 2113, Australia

CANON NEW ZEALAND LTD.

Fred Thomas Drive, P.O. Box 33-336, Takapuna, Auckland, New Zealand

JAPAN _____ CANON SALES CO., INC.

12-15 Mita, 3-Chome, Minato-ku, Tokyo 108-8011, Japan

This Instructions booklet is current as of March 2002. For information on using the camera with system accessories introduced after this date, contact your nearest Canon Service Center.