

Canon Utilities

- **ZoomBrowser EX 5.7**
- **RAW Image Task 2.4**
- **PhotoStitch 3.1**

Compatible Image Models

- EOS-1D Mark II N
- EOS-1Ds Mark II
- EOS-1D Mark II
- EOS-1Ds
- EOS-1D
- EOS 5D
- EOS 30D
- EOS 20D
- EOS 10D
- EOS DIGITAL REBEL XT/400D DIGITAL
- EOS DIGITAL REBEL XT/350D DIGITAL
- EOS DIGITAL REBEL/300D DIGITAL
- EOS D60
- EOS D30

Table of Contents

Introduction

1 Viewing and Classifying Images

2 Editing and Exporting Images

3 Printing Images

4 Internet Function and Specifying Preferences

Troubleshooting

Index

Cover/Table of Contents

Introduction

Viewing and Classifying Images

Editing and Exporting Images

Printing Images

Internet Function and Specifying Preferences

Troubleshooting

Index

How to use this manual
(Click here)



READ CAREFULLY BEFORE USING!

CANON SOFTWARE LICENSE AGREEMENT

IMPORTANT - READ THIS AGREEMENT BEFORE USING THE SOFTWARE ON THE CD-ROM IN THIS BOX. BY USING THE SOFTWARE, YOU AGREE TO BE BOUND BY THE TERMS OF THIS AGREEMENT.

This is a license agreement (the [Agreement]) between you and Canon Inc. ([Canon]).

IF YOU DO NOT AGREE TO THE TERMS AND CONDITIONS OF THIS AGREEMENT, DO NOT USE THE SOFTWARE PROGRAM ON THE CD-ROM AND THE USER MANUAL IN THIS BOX (COLLECTIVELY, THE [SOFTWARE]) AND RETURN THE SOFTWARE WITHIN 30 DAYS FROM THE DATE OF PURCHASE TO YOUR POINT OF PURCHASE FOR A REFUND.

In consideration of the right to use the SOFTWARE, you agree to abide by the terms and conditions of this Agreement.

1. **LICENSE:** Canon grants you the non-exclusive right to use the SOFTWARE only on a single computer. You may physically transfer the SOFTWARE from one computer to another provided that the SOFTWARE is used on only one computer at a time. You shall not install or use the SOFTWARE on a network, multiple CPU, multiple site arrangement, or any other hardware configuration where the SOFTWARE is accessible to more than one CPU or to more than one user.

YOU SHALL NOT ASSIGN, SUBLICENSE, RENT, LEASE, LOAN, CONVEY OR OTHERWISE USE, TRANSFER, COPY, TRANSLATE, CONVERT TO ANOTHER PROGRAMMING LANGUAGE, ALTER, MODIFY, DECOMPILE OR DISASSEMBLE THE SOFTWARE, IN WHOLE OR IN PART, EXCEPT AS EXPRESSLY PROVIDED IN THIS AGREEMENT.

2. **BACK-UP COPY:** You may make one copy of the SOFTWARE solely for back-up purposes, or copy the SOFTWARE onto the permanent storage device (e.g. a hard disk) of your computer and retain the original for back-up purposes. Any other copying of the SOFTWARE is a violation of this Agreement. You must reproduce and include the copyright notice on the back-up copy.
3. **SUPPORT AND UPDATES:** Canon is not responsible for providing maintenance or support for use of the SOFTWARE. No updates, fixes or support will be made available for the SOFTWARE.
4. **LIMITED WARRANTY AND LIMITATION OF LIABILITY:** It is your responsibility to choose, maintain and match the hardware and software components of your computer system. Thus Canon does not guarantee uninterrupted service or correction of errors or that the functions or performance of the SOFTWARE will meet your requirements. THE SOFTWARE IS LICENSED ON AN [AS IS] BASIS AND WITHOUT WARRANTY OF ANY KIND. The CD-ROM storing the SOFTWARE is warranted only against defective material under normal use for a period of ninety (90) days after purchase from an authorized Canon dealer as evidenced by your sales receipt. Your sole remedy for a defective CD-ROM shall be replacement of the same without charge when returned by you at your expense to your point of purchase and proven to be defective upon inspection. The replacement CD-ROM will be warranted for the remainder of the original ninety (90) day warranty period of the defective CD-ROM. The limited warranty does not apply if the failure of the CD-ROM resulted from accident, abuse or misapplication of the SOFTWARE and shall not extend to anyone other than the original user of the SOFTWARE.

EXCEPT AS SPECIFICALLY SET FORTH IN THIS PARAGRAPH 4, CANON, CANON'S SUBSIDIARIES, DISTRIBUTORS AND DEALERS DISCLAIM ALL WARRANTIES, EXPRESS OR IMPLIED, INCLUDING ANY WARRANTY OF MERCHANTABILITY OR FITNESS FOR A PARTICULAR PURPOSE, WITH RESPECT TO THE SOFTWARE.

NEITHER CANON NOR ANY OF CANON'S SUBSIDIARIES, DISTRIBUTORS OR DEALERS IS LIABLE FOR ANY DAMAGES HOWSOEVER CAUSED, INCLUDING WITHOUT LIMITATION, DIRECT, CONSEQUENTIAL OR INCIDENTAL LOSS OR DAMAGE INCLUDING LOSS OF PROFITS, EXPENSE OR INCONVENIENCE HOWSOEVER CAUSED OR ARISING OUT OF THE SOFTWARE OR THE USE THEREOF.

NEITHER CANON, NOR ANY OF CANON'S SUBSIDIARIES, DISTRIBUTORS OR DEALERS SHALL HAVE ANY OBLIGATION TO INDEMNIFY YOU AGAINST ANY CLAIM OR SUIT BROUGHT BY A THIRD PARTY ALLEGING THAT THE SOFTWARE OR THE USE THEREOF INFRINGES ANY INTELLECTUAL PROPERTY OF SUCH THIRD PARTY.

5. **TERM:** This Agreement is effective upon your using the SOFTWARE and remains in effect until expiration of all copyright interests in the SOFTWARE unless earlier terminated. You may terminate this Agreement by destroying the SOFTWARE. This Agreement will also terminate without notice to you if you fail to comply with any of the terms of this Agreement and you must then promptly return the SOFTWARE. In addition, Canon may enforce its other legal rights.
6. **U.S. GOVERNMENT RESTRICTED RIGHTS NOTICE:** The SOFTWARE is provided with restricted rights. Use, duplication or disclosure is subject to restrictions as set forth in either subparagraph (c) (1) (ii) of the Rights in Technical Data and Computer software clause at DFARs 252.227-7013 or subparagraph (c) (1) and (2) of the Commercial Computer Software Restricted Rights Clause at FAR 52.227-19, as applicable.
7. **SEVERABILITY:** In the event that any provision of this Agreement is declared or found to be illegal by any court or tribunal of competent jurisdiction, such provision shall be null and void with respect to the jurisdiction of that court or tribunal and all the remaining provisions of this Agreement shall remain in full force and effect.
8. **CONTROLLING LAW:** The terms of this Agreement as it relates to purchases of the Software in the United States of America shall be governed and construed in all respects in accordance with the laws and regulations of the State of New York, without reference to choice of law principles. The terms of this Agreement as it relates to purchases of the Software in Canada shall be governed by the laws of the province of Ontario.
9. **OWNERSHIP:** All rights, including but not limited to copyrights and trade secret rights, to the SOFTWARE belong to Canon, its affiliated corporations and third party licensors. Your use of the SOFTWARE is subject to the United States, Canada and other applicable copyright and trademark laws and nothing in this Agreement constitutes a waiver of the rights of Canon, its affiliated corporations and third party licensors under such laws. Nothing contained in Paragraph 1 shall be construed to give Canon any ownership rights in any images, graphics or textual material that you save in connection with the Software.
10. **ACKNOWLEDGEMENT:** BY USING THE SOFTWARE, YOU ACKNOWLEDGE THAT YOU HAVE READ THIS AGREEMENT, UNDERSTOOD IT, AND AGREE TO BE BOUND BY ITS TERMS AND CONDITIONS. YOU ALSO AGREE THAT THIS AGREEMENT IS THE COMPLETE AND EXCLUSIVE STATEMENT OF AGREEMENT BETWEEN YOU AND CANON CONCERNING THE SUBJECT MATTER HEREOF AND SUPERSEDES ALL PROPOSALS OR PRIOR AGREEMENTS, VERBAL OR WRITTEN, AND ANY OTHER COMMUNICATIONS BETWEEN THE PARTIES RELATING TO THE SUBJECT MATTER HEREOF. NO AMENDMENT TO THIS AGREEMENT SHALL BE EFFECTIVE UNLESS SIGNED BY A DULY AUTHORIZED OFFICER OF CANON.

Cover/Table of Contents

Introduction

Viewing and Classifying Images

Editing and Exporting Images

Printing Images

Internet Function and Specifying Preferences

Troubleshooting

Index



Introduction

This chapter includes information on the precautions to be read before using ZoomBrowser EX, how to use this Instruction Manual, the system requirements and the supported image types. It also explains the software main features and configuration.

About This Manual

Thank you for purchasing this Canon product. Precautions for using this product safely and icons to help you with procedures, etc. are described at the beginning of this Instruction Manual. Please be sure to read these first before proceeding to the information in the other chapters.

- It is prohibited to reproduce, in whole or part, the contents of this Instruction Manual without permission.
- Canon may change without notice the software specifications and contents of this Instruction Manual.
- The software screens and displays printed in this Instruction Manual may differ slightly from the actual software.
- The content of this Instruction Manual has been reviewed thoroughly. However, if you should notice any errors or omissions, please contact a Canon Service Center.
- Please note that irrespective of the above-mentioned, Canon does not take responsibility for the outcome of the operation of the software.

Trademark Acknowledgments

- IBM is a registered trademark of International Business Machines Corporation.
- Microsoft and Windows are registered trademarks or trademarks of Microsoft Corporation in the United States and/or other countries.
- Other names and products not mentioned above may be registered trademarks or trademarks of their respective companies.

● Click on the item to display its page.

About This Manual	0-1
System Requirements	0-1
Supported Images	0-1
How to Use This Instruction Manual.....	0-2
Software Main Features and Configuration	0-3

System Requirements

OS	Windows XP (Professional/Home Edition), Windows Me, Windows 2000, Windows 98SE	
Computer	Computer with one of the above OS preinstalled * Upgraded machines not supported.	
CPU	500MHz Pentium or higher	
RAM	Windows XP, Windows 2000	Minimum 256MB
	Windows Me, Windows 98SE	Minimum 128MB
Display	Screen resolution: 1024 x 768 pixels or more Color quality: Medium (16 bit) or more	

Supported Images

This software supports the following image types.

Image type/ Camera used		Extension
JPEG images	Exif 2.2 or 2.21-compatible JPEG images	.JPG, .JPEG
RAW images	EOS-1D Mark II N, EOS-1Ds Mark II, EOS-1D Mark II, EOS 5D, EOS 30D, EOS 20D, EOS DIGITAL REBEL XT/400D DIGITAL or EOS DIGITAL REBEL XT/350D DIGITAL	.CR2
	EOS-1Ds, EOS-1D	.TIF
	EOS 10D, EOS DIGITAL REBEL/300D DIGITAL, EOS D60 or EOS D30	.CRW
BMP images	Bitmap images	.BMP
TIFF images	Exif-compatible TIFF images	.TIF, .TIFF
PCD images	Photo CD images	.PCD

Cover/Table of Contents

Introduction

Viewing and Classifying Images

Editing and Exporting Images

Printing Images

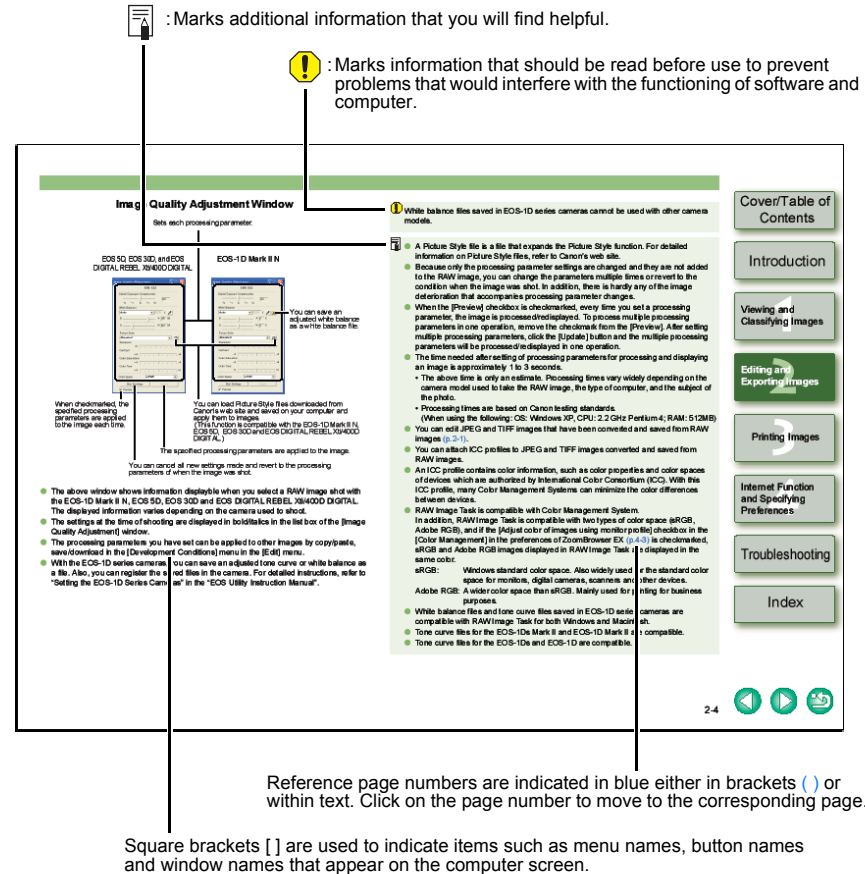
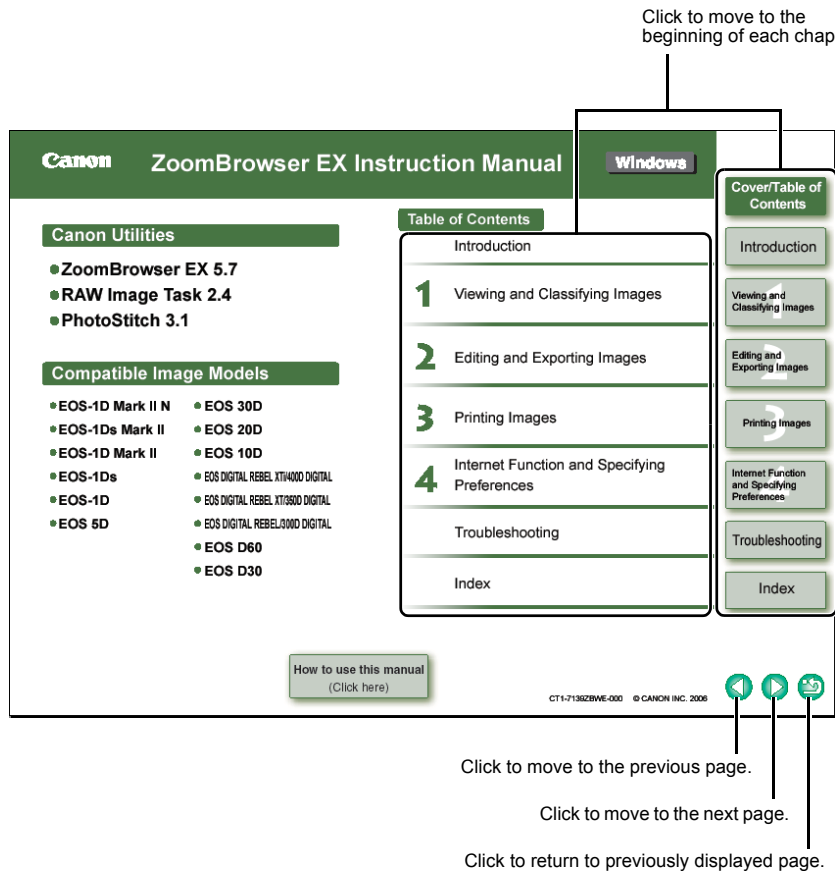
Internet Function and Specifying Preferences

Troubleshooting

Index



How to Use This Instruction Manual



Cover/Table of Contents

Introduction

Viewing and Classifying Images

Editing and Exporting Images

Printing Images

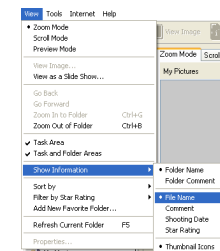
Internet Function and Specifying Preferences

Troubleshooting

Index

- In this manual, Windows XP Professional/Home Edition is referred to as "Windows XP", Windows Millennium Edition is referred to as "Windows Me", Windows 2000 Professional is referred to as "Windows 2000", and Windows 98 Second Edition is referred to as "Windows 98SE".
 - For how to use the software applications, also refer to the Help for each software application.
 - For more information on the restrictions of each software, refer also to the "Readme" file for each software application.
- Readme: Click the [Start] button ► select [All Programs] ([Programs] in versions other than Windows XP) ► [Canon Utilities] ► folder of each software application ► "Readme" file of each software application.

- The camera name is shown in the screens as "EOS XXX".
 - In this manual, the screens used in the examples are from Windows XP.
 - Text inside < > in this document indicates the keys on the keyboard and camera button names.
 - ► in this document indicates the sequence of operation as shown on the right.
- Example: [View] menu ► [Show Information] ► [File Name].



Software Main Features and Configuration

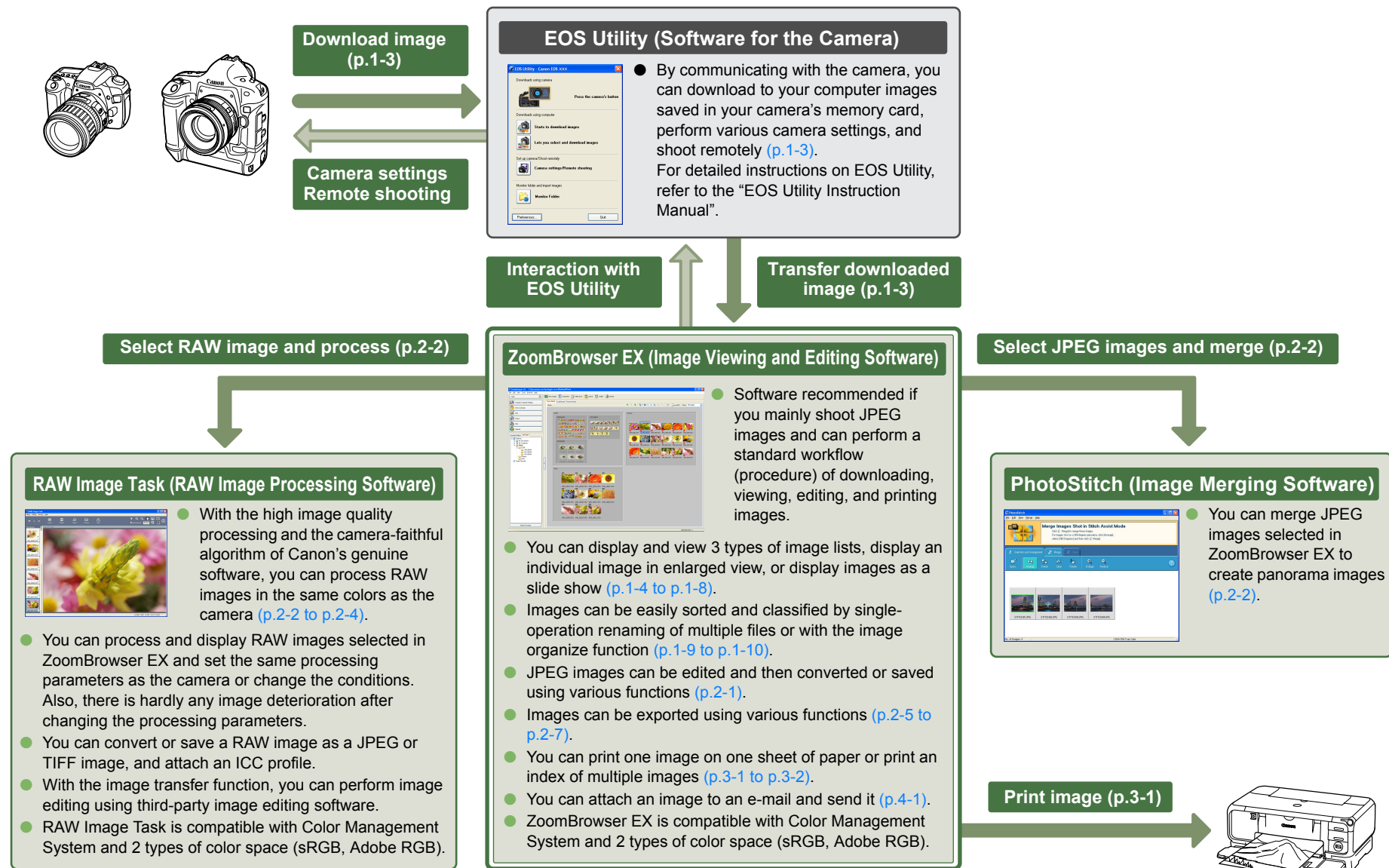
Canon Digital Camera software having the following features and functions is stored on the EOS DIGITAL Solution Disk.
Operation is done as shown on this page together with each software application, centered around ZoomBrowser EX.

→ : Shows the shot image flow.

→ : Shows the interaction between the camera and the software, or between the different software.

→ : Shows software windows and descriptions of operation explained in this manual.

→ : Shows the EOS Utility window and description of operation.



Cover/Table of Contents

Introduction

Viewing and Classifying Images

Editing and Exporting Images

Printing Images

Internet Function and Specifying Preferences

Troubleshooting

Index



1 Viewing and Classifying Images

This chapter explains downloading of shot images using EOS Utility, and also about displayed images, classifying downloaded images, and other topics.

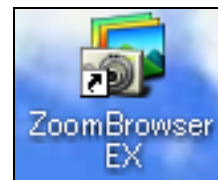
- Click on the item to display its page.

Starting up ZoomBrowser EX	1-1
Downloading Images from Your Camera	1-3
Displaying Images	1-3
Handling the Folders.....	1-3
Registering Frequent Use Folder.....	1-3
Selecting the Image Display Mode	1-4
Zoom Mode.....	1-4
Scroll Mode.....	1-5
Preview Mode	1-6
Viewer Window	1-7
Properties Window.....	1-8
View & Classify Function.....	1-8
Viewing the Images as a Slide Show.....	1-8
Renaming the Files in a Single Operation	1-9
Classifying the Images into Folders	1-10
Searching Images.....	1-10

Starting up ZoomBrowser EX

Double-click on the [ZoomBrowser EX] icon on the desktop.

- ZoomBrowser EX starts up and the main window is displayed.
- Alternatively, you can start up the ZoomBrowser EX by clicking the [Start] button ► select [All Programs] ([Programs] in versions other than Windows XP) ► [Canon Utilities] ► [ZoomBrowser EX] ► [ZoomBrowser EX].
- To exit the ZoomBrowser EX, select the [File] menu ► [Exit].



Cover/Table of Contents

Introduction

Viewing and Classifying Images

Editing and Exporting Images

Printing Images

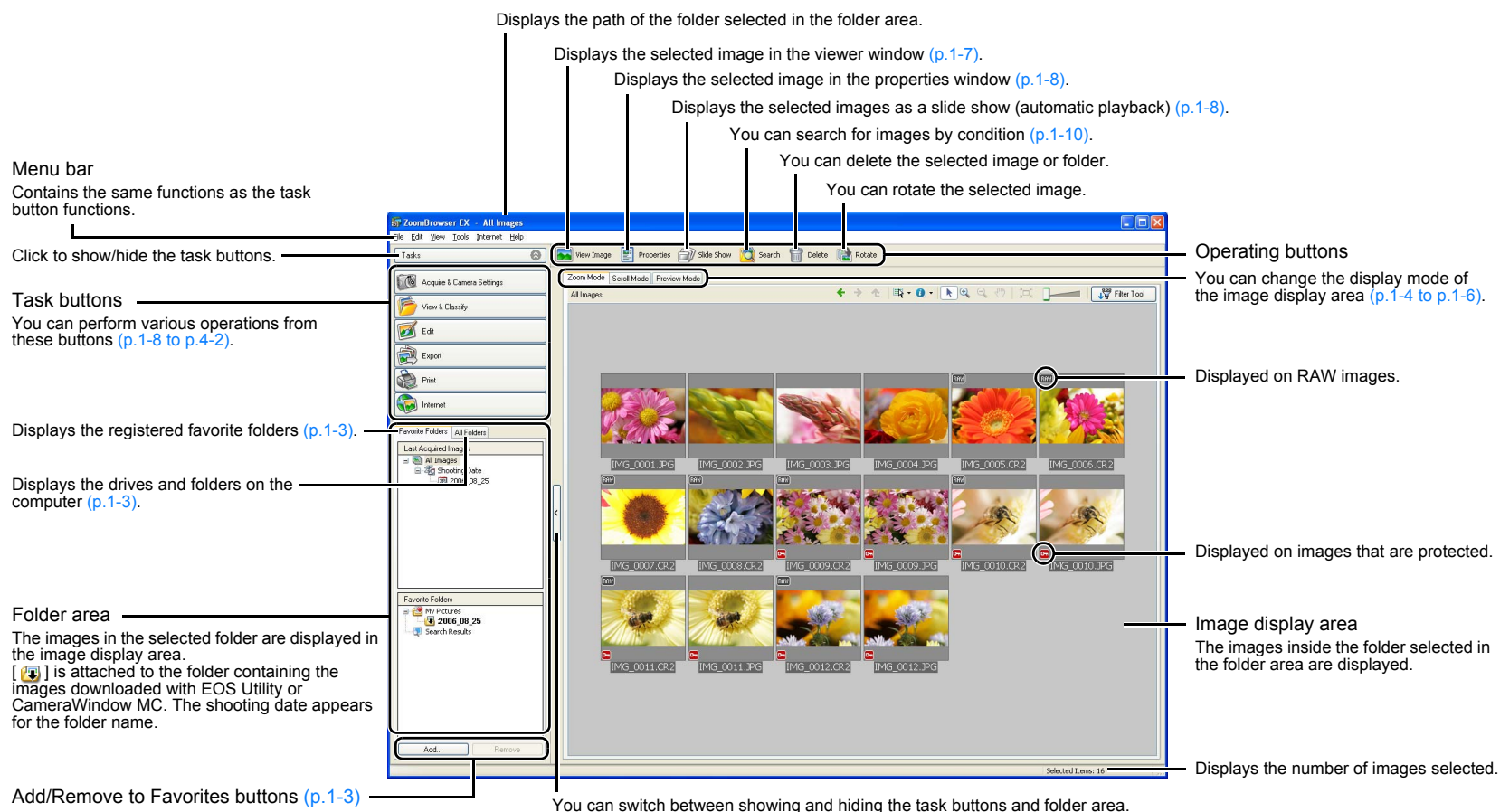
Internet Function and Specifying Preferences

Troubleshooting

Index



Main Window



- When sound is recorded in an image shot with an EOS-1D series camera, [Icon] is displayed. For playback of the sound, select the [Edit] menu ► [Play Sound].
- [Icon] is displayed on images shot with AEB.

- The mark attached to the folder containing the images downloaded with EOS Utility or CameraWindow MC is stored until you exit ZoomBrowser EX.
- ZoomBrowser EX is compatible with Color Management System (compatible color spaces: sRGB, Adobe RGB). When the [Adjust color of images using monitor profile] checkbox in the [Color Management] in the preferences (p.4-2) is checkmarked, sRGB and Adobe RGB images are displayed in the same colors.

Cover/Table of Contents

Introduction

Viewing and Classifying Images

Editing and Exporting Images

Printing Images

Internet Function and Specifying Preferences

Troubleshooting

Index



Downloading Images from Your Camera

You can download shot images saved on the CF card in your camera to your computer using EOS Utility, software for the camera.

For detailed instructions on EOS Utility, refer to the “EOS Utility Instruction Manual”.

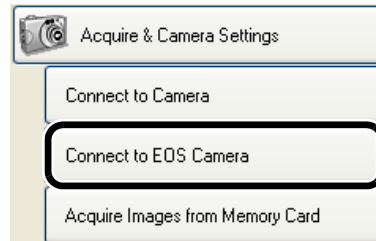
1 Start up ZoomBrowser EX (p.1-1).

2 Click [Acquire & Camera Settings].

→ [Acquire & Camera Settings] menu appears.

3 Click [Connect to EOS Camera].

→ [EOS Utility] starts up.



4 Connect the camera to your computer with the interface cable and set the camera's power switch to <ON>.

5 Click the [Starts to download images] button in [EOS Utility].

→ The images are downloaded to the computer and the downloaded images are displayed in the ZoomBrowser EX main window.

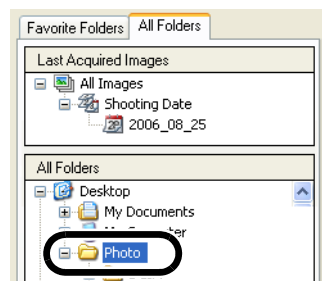
When downloading images using a third-party card reader, insert the memory card removed from the camera in the card reader, and click [Acquire Images from Memory Card] in step 3. The image download window appears. You can then download images by clicking the [Starts to download images] button. For detailed information on downloading images using a third-party card reader, refer to “Downloading Images Using Your Card reader” in the “EOS Utility Instruction Manual”.

Displaying Images

The images in the folder selected in the folder area are displayed in the image display area.

Select the folder where the images to be displayed are saved.

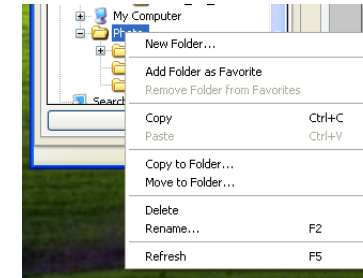
→ The images in the folder are displayed in the main window.



Handling the Folders

You can handle the folder from the menu that appears by clicking the folder with the right button on the mouse.

Click on the folder with the right button on the mouse and select an option from the menu that appears.



Registering Frequent Use Folder

You can register a frequently used folder as a [Favorite Folders].

1 Select the [All Folders] tab.

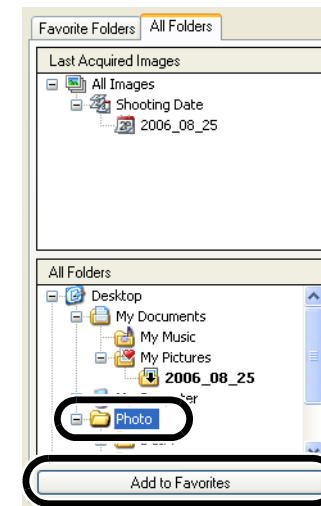
2 Select the folder you want to register and then click the [Add to Favorites] button.

→ The folder is displayed as [📁].

3 Select the [Favorite Folders] tab.

→ The registered folder appears.

- Alternatively, you can register a favorite folder in the dialog box displayed when you click the [Add] button in the [Favorite Folders] tab sheet.
- To remove the registered folder, click the [Remove] button in the [Favorite Folders] tab sheet.



The removed registered folder is deleted only from the [Favorite Folders] tab sheet and the actual folder or images inside the folder are not deleted.

Cover/Table of Contents

Introduction

Viewing and Classifying Images

Editing and Exporting Images

Printing Images

Internet Function and Specifying Preferences

Troubleshooting

Index



Selecting the Image Display Mode

You can select the image display mode from 3 types (Zoom Mode, Scroll Mode and Preview Mode).

Also, in the viewer window, you can display images individually, and in the properties window, you can check shooting information and enter comments, etc.

Zoom Mode

You can zoom into the target folder and display the images inside the folder.

Select the [Zoom Mode] tab.

You can select or deselect all the images and folders.

Displays the folder one level above.

Operating buttons (p.1-2)

You can set the information to be displayed for the images.

To select an image after enlarging or reducing it, click this button before selecting it.

When the image is displayed as an enlargement, you can move the display position by dragging the image.

Displays the image to fit the size of the window.

You can further select images to be displayed according to a "Rating".

Drag left or right to display the image enlarged or reduced.

Displays the image reduced.

Displays the image enlarged. When the image is enlarged, the [Navigator] window appears and you can check the enlarged display position and move it by dragging.

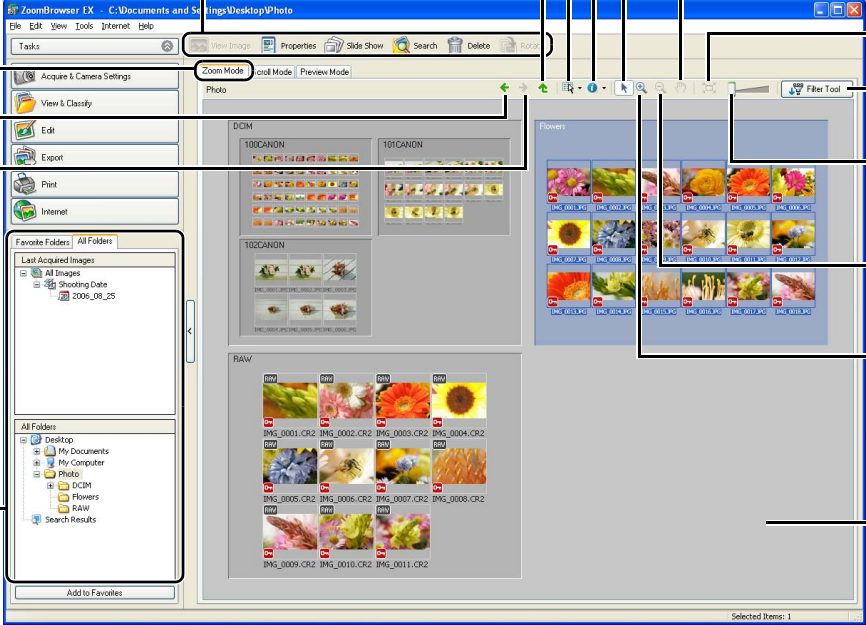
Image display area
The images inside the folder selected in the folder area are displayed.

Zoom Mode tab

Returns to the display of the folder previously displayed.

Returns to the display of the folder before [↩] is clicked.

Folder area
The images in the selected folder are displayed in the image display area.



- To select an image, click the target image.
- If you double-click an image, the image will be displayed in the viewer window (p.1-7).
- To select sequential images, click the first image and then hold down the <Shift> key and click the last image.

You can set the zoom speed when a folder is selected (p.4-2).

- To select multiple images, hold down the <Ctrl> key and click the images.
- If you move the cursor over the image and wait for a while, the image will be displayed individually.
- You can zoom in by double-clicking inside the folder frame.

Cover/Table of Contents

Introduction

Viewing and Classifying Images

Editing and Exporting Images

Printing Images

Internet Function and Specifying Preferences

Troubleshooting

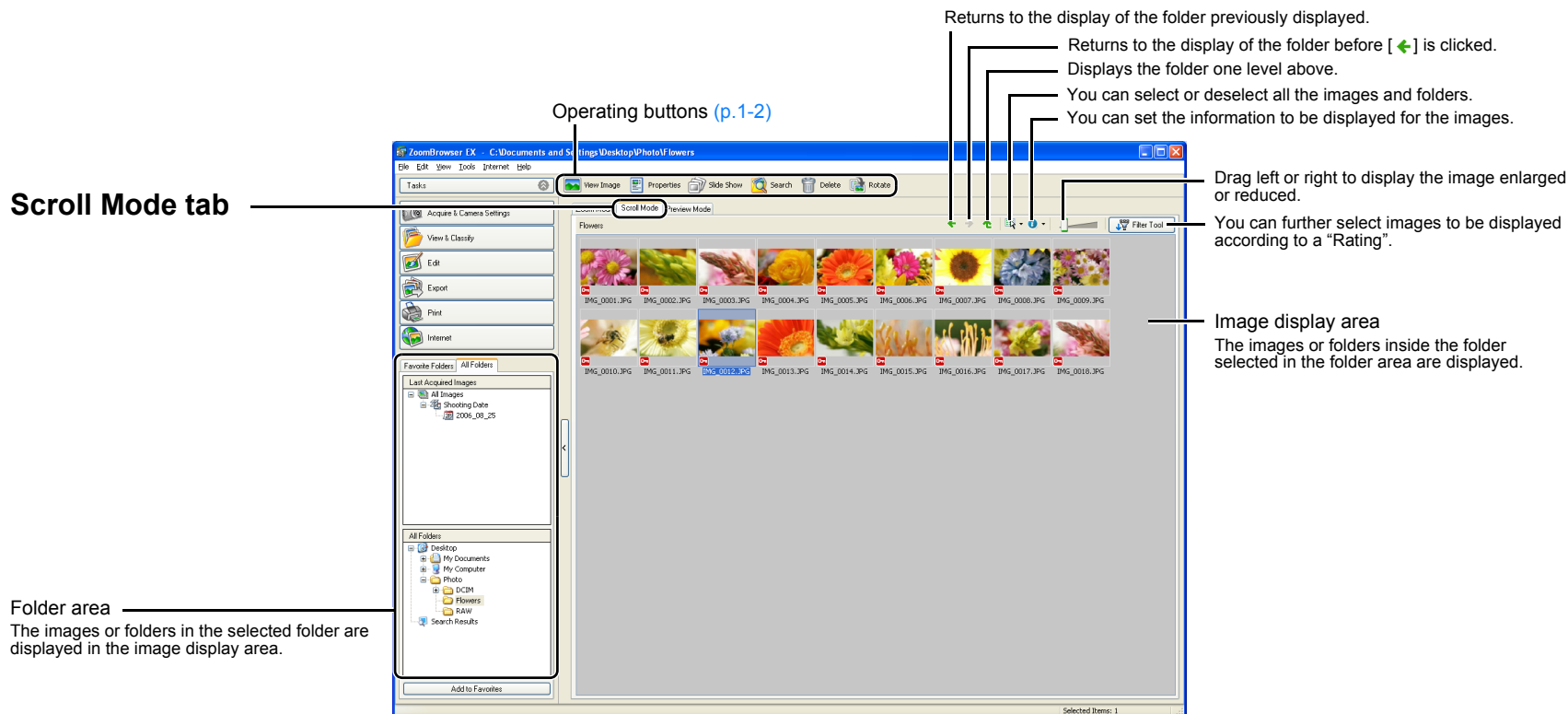
Index



Scroll Mode

You can display the images in multiple folders at the same time.

Select the [Scroll Mode] tab.



- To select an image, click the target image.
- If you double-click an image, the image will be displayed in the viewer window (p.1-7).
- To select sequential images, click the first image and then hold down the <Shift> key and click the last image.

- To select multiple images, hold down the <Ctrl> key and click the images.
- If you move the cursor over the image and wait for a while, the image will be displayed individually.

 You can set the level of the folder that displays the images (p.4-2).

Cover/Table of Contents

Introduction

Viewing and Classifying Images

Editing and Exporting Images

Printing Images

Internet Function and Specifying Preferences

Troubleshooting

Index



Preview Mode

You can select an image displayed as a thumbnail and display it individually.

Select the [Preview Mode] tab.

Preview Mode tab

Image display area

The image selected in the thumbnail image display area is displayed.

Folder area

The images in the selected folder are displayed in the thumbnail image display area.

Returns to the display of the folder before [↶] is clicked.

Returns to the display of the folder previously displayed.

You can set a "Rating".

Operating buttons (p.1-2)

- Displays the folder one level above.

- You can select or deselect all the images and folders.

- You can set the information to be displayed for the images.

You can further select images to be displayed according to a “Rating”.

- Image information area

- You can change the file name.

- You can set protection.

- When a sound file is selected, the information of the sound file is displayed. If the [Play Sound] button is clicked, the sound is played back.

- You can enter comments.

- The [View/Modify Keywords] dialog box appears and you can set a keyword.

- Displays the histogram (brightness distribution).

- Displays the shooting information.


- Thumbnail image display area

The images inside the folder selected in the folder area are displayed.
If you click an image, the image will be displayed in the image display area.
If you double-click an image, the image will be displayed in the viewer window (p.1-7).


<p>Displays the next image.</p>

Displays the previous image.

You can show/hide the image information area.

- To select multiple images, hold down the <Ctrl> key and click the images.
- To select sequential images, click the first image and then hold down the <Shift> key and click the last image.
- You can switch between showing and hiding each item by clicking the [] button in the image information area.

- If you move the cursor over the thumbnail image and wait for a while, the image will be displayed individually.
- If you double-click on a folder in the thumbnail image display area, the images inside the folder will be displayed.

 You cannot change the file name or edit an image that is protected.

Cover/Table of Contents

Introduction

Viewing and Classifying Images

Editing and Exporting Images

Printing Images

4 Internet Function and Specifying Preferences

Troubleshooting

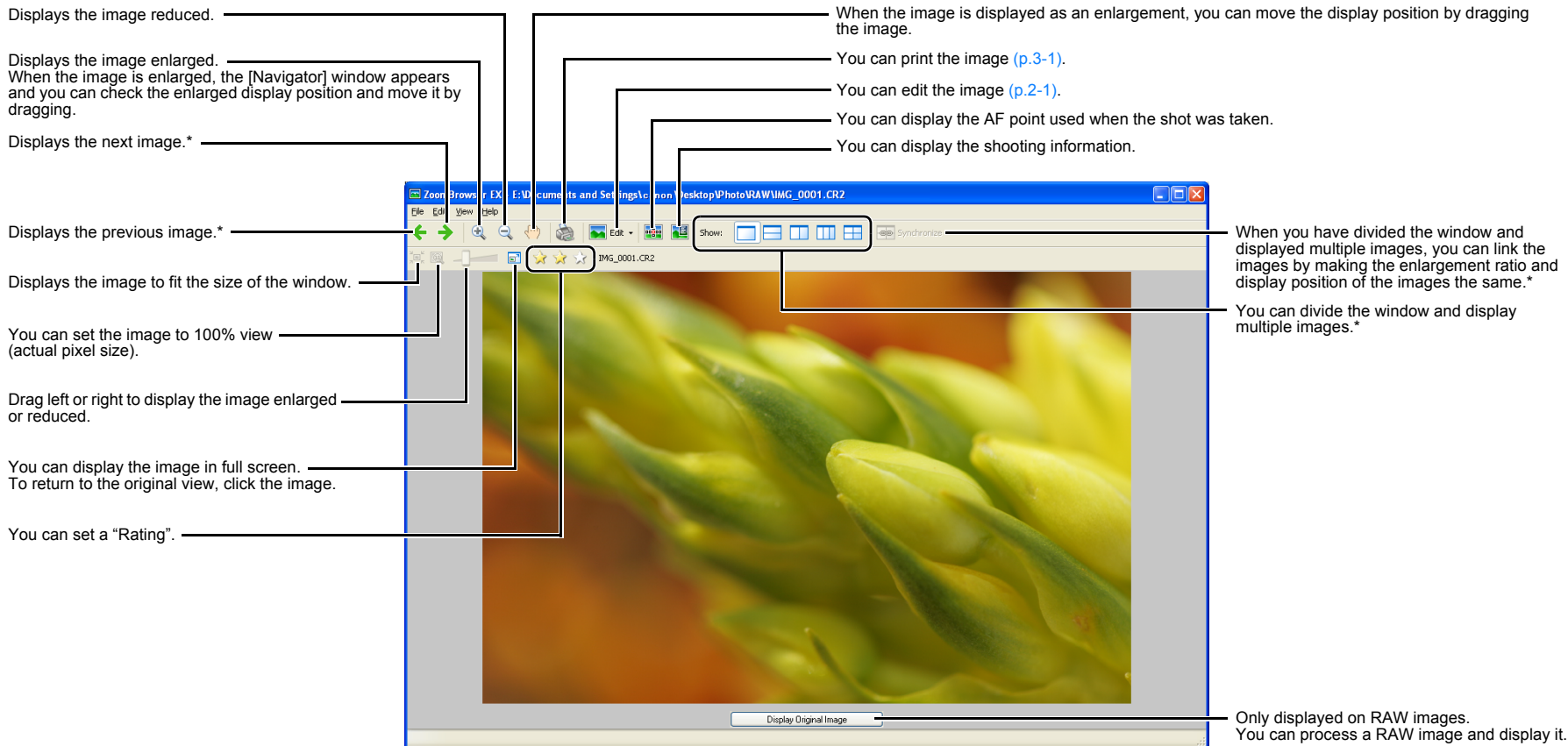
Index

Viewer Window

You can display images in individual windows.

Double-click the image.

→ The selected image is displayed in the viewer window.



* When you have selected multiple images and opened the viewer window, you can switch between the selected images. If you have selected one image and opened the viewer window, you can switch between images inside the same folder.

! If RAW images are not processed, they cannot be displayed enlarged or reduced. To display RAW images enlarged or reduced, first click the [Display Original Image] button and process the images.

- When the shot was taken with automatic AF point selection, multiple active AF points might be displayed.
- You can change the processing parameters of RAW images (p.2-2).
- You can set the items that are displayed as the shooting information (p.4-2).

Cover/Table of Contents

Introduction

Viewing and Classifying Images

Editing and Exporting Images

Printing Images

Internet Function and Specifying Preferences

Troubleshooting

Index



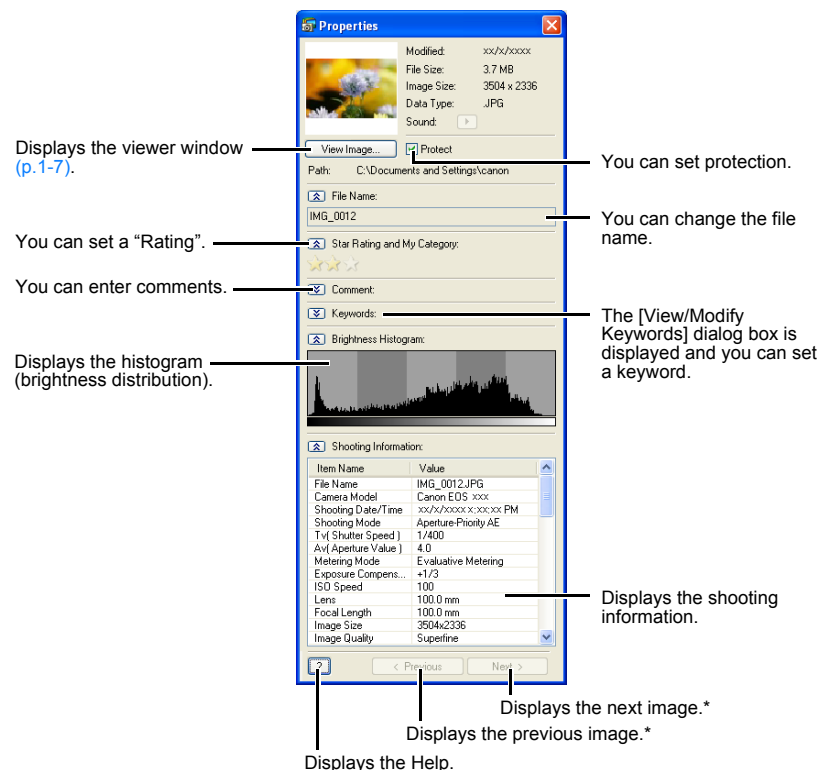
Properties Window

You can enter information and comments for the images.

1 Select the image in zoom mode (p.1-4) or scroll mode (p.1-5).

2 Click the [Properties] button (p.1-2).

→ The properties window appears.



* When you select multiple images and open the properties window, you can switch the image displayed.

● You can switch between showing and hiding each item by clicking the [] button.

! You cannot change the file name or edit an image that is protected.

📄 If you select a sound file, the information relating to that sound file is displayed.

View & Classify Function

Viewing the Images as a Slide Show

You can view the images as a slide show (automatic playback).

1 Select the images.

2 Click [View & Classify].

→ The [View & Classify] menu appears.

3 Click [View as a Slide Show].

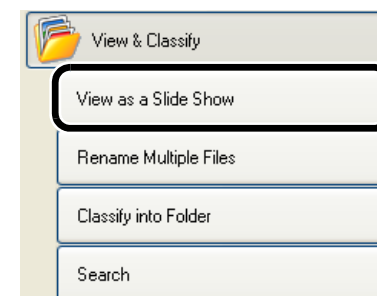
→ The settings window appears.

4 Specify desired settings.

● For detailed information, click the [?] button and refer to the Help displayed.

5 Click [Start Slide Show].

→ The slide show begins.



Cover/Table of Contents

Introduction

Viewing and Classifying Images

Editing and Exporting Images

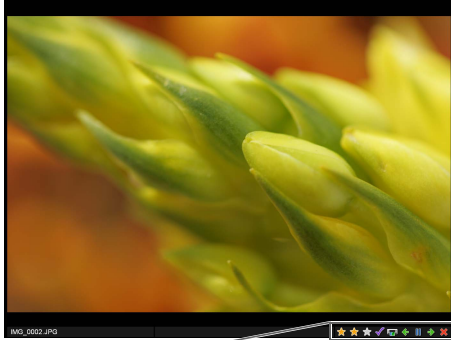
Printing Images

Internet Function and Specifying Preferences

Troubleshooting

Index





You can set a "Rating".

If clicked when an image is displayed, the image appears selected or deselected in the main window after the slide show ends.

If clicked when an image is displayed, the printing dialog box (p.3-1) appears after the slide show ends, and you can print the selected images.

Displays the previous image.

Pauses the slide show.

Displays the next image.

Ends the slide show.

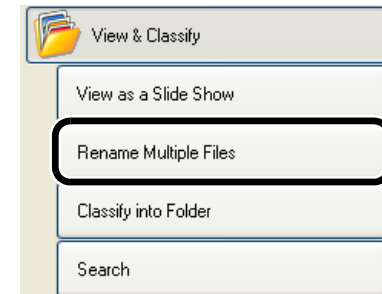


You can end the slide show by pressing the <Esc> key on the keyboard.

Renaming the Files in a Single Operation

You can rename the multiple files in a single operation.

- 1 **Select the images.**
- 2 **Click [View & Classify].**
→ The [View & Classify] menu appears.
- 3 **Click [Rename Multiple Files].**
→ The settings window appears.
- 4 **Specify desired settings.**
• For detailed information, click the [?] button and refer to the Help displayed.
- 5 **Click [Finish].**
→ The processing window appears and the settings are executed.



Cover/Table of Contents

Introduction

Viewing and Classifying Images

Editing and Exporting Images

Printing Images

Internet Function and Specifying Preferences

Troubleshooting

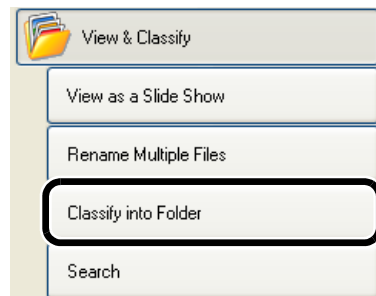
Index



Classifying the Images into Folders

You can classify images according to the date and time they were shot.

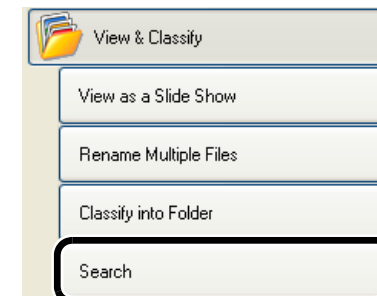
- 1 Select the images.**
- 2 Click [View & Classify].**
→ The [View & Classify] menu appears.
- 3 Click [Classify into Folder].**
→ The settings window appears.
- 4 Specify desired settings.**
 - For detailed information, click the [?] button and refer to the Help displayed.
- 5 Click [Finish].**
→ The processing window appears and the settings are executed.



Searching Images

You can search for images with set conditions.

- 1 Select in the folder area or in the image display area the folder or drive to be searched (p.1-2).**
- 2 Click [View & Classify].**
→ The [View & Classify] menu appears.
- 3 Click [Search].**
→ The settings window appears.
- 4 Specify desired settings.**
 - For detailed information, click the [?] button and refer to the Help displayed.
- 5 Click [Start Search].**
→ The search begins and the images that match the set conditions are displayed.
- 6 Click [Finish].**
 - The display returns to the main window.
 - Select the [Search Results] folder in the folder area to display the searched images.
 - The images in the [Search Results] folder are stored until you search for an image with set conditions again or exit ZoomBrowser EX.



! All operations performed on images in the [Search Results] folder are reflected in any original images. Please be cautioned that editing or deleting of images in the [Search Results] folder will then also cause editing or deleting of any original images.

Cover/Table of Contents

Introduction

Viewing and Classifying Images

Editing and Exporting Images

Printing Images

Internet Function and Specifying Preferences

Troubleshooting

Index



This chapter explains image editing, processing RAW images and various ways to export images.

- Click on the item to display its page.

Editing Function	2-1
Editing Images	2-1
Merging Images	2-2
Processing RAW Images	2-2
Exporting Function	2-5
Exporting Images	2-5
Exporting Shooting Properties	2-5
Exporting an Image as a Screen Saver	2-6
Exporting an Image as Wallpaper	2-6
Writing Images to a CD	2-7

Editing Function

Editing Images

You can edit your images with red-eye correction, brightness/color correction, sharpness, trimming, text insertion, automatic correction. Also, you can transfer an image to other image editing software.

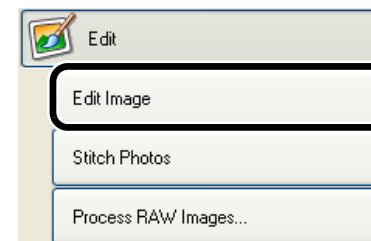
1 Select one image.

2 Click [Edit].

→ The [Edit] menu appears.

3 Click [Edit Image].

→ The settings window appears.



4 Select the contents to be edited and then click [Finish].

- A window for the selected contents to be edited appears.
- For detailed information, click the [?] button and refer to the Help displayed.
 - To transfer and edit your image in different image editing software, select [Edit with external image editor], click the [Manage List] button and then select the image editing software to be used.

5 Adjust using the window that appears.

6 Click the [Save As] button.

→ The [Save As] dialog box appears.

7 Select the save destination and click the [Save] button.

→ The edited image is saved.

- You cannot select multiple images and edit.
- You cannot edit RAW images here. You can edit RAW images with RAW Image Task. By converting RAW images to JPEG or TIFF images, you can edit as described on this page (p.2-2).
- Edited images cannot be reverted to their original condition. We recommend saving edited images under a different name.

Cover/Table of Contents

Introduction

Viewing and Classifying Images

Editing and Exporting Images

Printing Images

Internet Function and Specifying Preferences

Troubleshooting

Index

Merging Images

You can merge up to 4 JPEG images to create a panorama image.

1 Select multiple images.

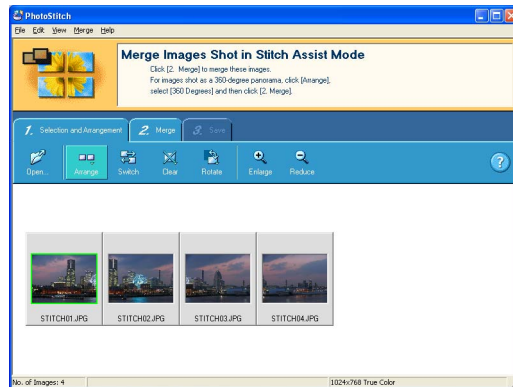
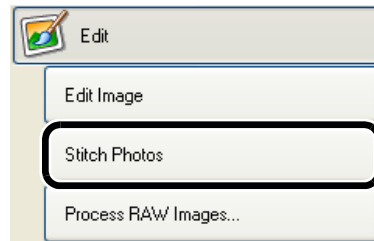
2 Click [Edit].

→ The [Edit] menu appears.

3 Click [Stitch Photos].

→ The PhotoStitch starts up and the main window is displayed.

- Follow the instructions displayed to merge the images.
- For detailed information, click the [?] button and refer to the Help displayed.



- You cannot merge RAW images in the PhotoStitch.
- Merging may not be successful when more than 4 images are merged.

Processing RAW Images

You can specify the same processing parameters for RAW images as for the camera.

Also, you can convert RAW images to JPEG images or TIFF images and save or transfer them to other image editing software, as well as attach ICC profiles.

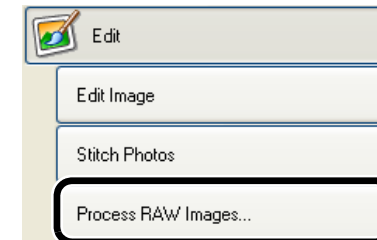
1 Select the RAW image.

2 Click [Edit].

→ The [Edit] menu appears.

3 Click [Process RAW Images].

- The RAW Image Task starts up and the main window is displayed.
- Refer to the [next page](#) for an explanation of the RAW Image Task window.
- For detailed information, refer to [Help] menu and the [RAW Image Task Help].



4 Adjust the image.

- Adjust the image with the [Image Quality Adjustment] window.

5 Click [Save] in the toolbar.

→ The [Save] window appears.

6 Specify desired settings.

7 Click the [Save] button.

→ The processing window appears and the image is saved.

8 Select the [File] menu ► [Exit].

→ The RAW Image Task exits.

Cover/Table of Contents

Introduction

Viewing and Classifying Images

Editing and Exporting Images

Printing Images

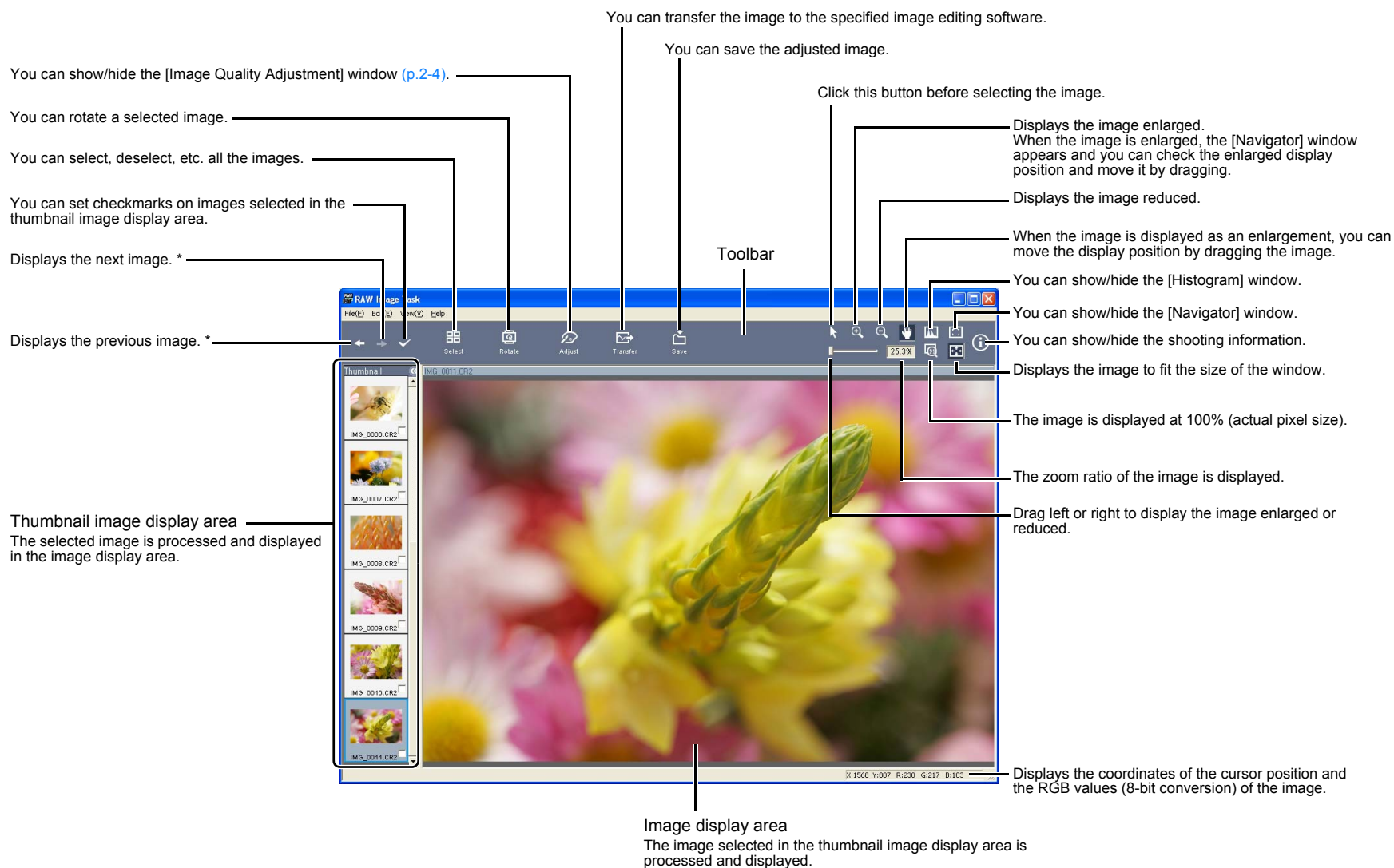
Internet Function and Specifying Preferences

Troubleshooting

Index



RAW Image Task Main Window



* When you have selected multiple RAW images and started RAW Image Task, you can switch between the images displayed in the image display area.

Cover/Table of Contents

Introduction

Viewing and Classifying Images

Editing and Exporting Images

Printing Images

Internet Function and Specifying Preferences

Troubleshooting

Index

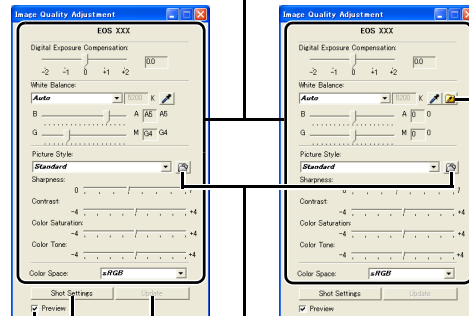


Image Quality Adjustment Window

Sets each processing parameter.

EOS 5D, EOS 30D, and EOS DIGITAL REBEL XT/400D DIGITAL

EOS-1D Mark II N



You can save an adjusted white balance as a white balance file.

When checkmarked, the specified processing parameters are applied to the image each time.

You can load Picture Style files downloaded from Canon's web site and saved on your computer and apply them to images. (This function is compatible with the EOS-1D Mark II N, EOS 5D, EOS 30D and EOS DIGITAL REBEL XT/400D DIGITAL.)

The specified processing parameters are applied to the image.

You can cancel all new settings made and revert to the processing parameters of when the image was shot.

- The above window shows information displayable when you select a RAW image shot with the EOS-1D Mark II N, EOS 5D, EOS 30D and EOS DIGITAL REBEL XT/400D DIGITAL. The displayed information varies depending on the camera used to shoot.
- The settings at the time of shooting are displayed in bold/italics in the list box of the [Image Quality Adjustment] window.
- The processing parameters you have set can be applied to other images by copy/paste, save/download in the [Development Conditions] menu in the [Edit] menu.
- With the EOS-1D series cameras, you can save an adjusted tone curve or white balance as a file. Also, you can register the saved files in the camera. For detailed instructions, refer to "Setting the EOS-1D Series Cameras" in the "EOS Utility Instruction Manual".



White balance files saved in EOS-1D series cameras cannot be used with other camera models.



- A Picture Style file is a file that expands the Picture Style function. For detailed information on Picture Style files, refer to Canon's web site.
- Because only the processing parameter settings are changed and they are not added to the RAW image, you can change the parameters multiple times or revert to the condition when the image was shot. In addition, there is hardly any of the image deterioration that accompanies processing parameter changes.
- When the [Preview] checkbox is checkmarked, every time you set a processing parameter, the image is processed/redisplayed. To process multiple processing parameters in one operation, remove the checkmark from the [Preview]. After setting multiple processing parameters, click the [Update] button and the multiple processing parameters will be processed/redisplayed in one operation.
- The time needed after setting of processing parameters for processing and displaying an image is approximately 1 to 3 seconds.
 - The above time is only an estimate. Processing times vary widely depending on the camera model used to take the RAW image, the type of computer, and the subject of the photo.
 - Processing times are based on Canon testing standards. (When using the following: OS: Windows XP, CPU: 2.2 GHz Pentium 4; RAM: 512MB)
- You can edit JPEG and TIFF images that have been converted and saved from RAW images (p.2-1).
- You can attach ICC profiles to JPEG and TIFF images converted and saved from RAW images.
- An ICC profile contains color information, such as color properties and color spaces of devices which are authorized by International Color Consortium (ICC). With this ICC profile, many Color Management Systems can minimize the color differences between devices.
- RAW Image Task is compatible with Color Management System. In addition, RAW Image Task is compatible with two types of color space (sRGB, Adobe RGB), and if the [Adjust color of images using monitor profile] checkbox in the [Color Management] in the preferences of ZoomBrowser EX (p.4-2) is checkmarked, sRGB and Adobe RGB images displayed in RAW Image Task are displayed in the same color.

sRGB: Windows standard color space. Also widely used for the standard color space for monitors, digital cameras, scanners and other devices.

Adobe RGB: A wider color space than sRGB. Mainly used for printing for business purposes.
- White balance files and tone curve files saved in EOS-1D series cameras are compatible with RAW Image Task for both Windows and Macintosh.
- Tone curve files for the EOS-1Ds Mark II and EOS-1D Mark II are compatible.
- Tone curve files for the EOS-1Ds and EOS-1D are compatible.

Cover/Table of Contents

Introduction

Viewing and Classifying Images

Editing and Exporting Images

Printing Images

Internet Function and Specifying Preferences

Troubleshooting

Index

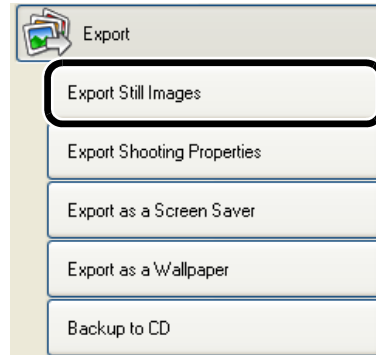


Exporting Function

Exporting Images

You can change the size of JPEG images as well as convert them to other image types and save them.

- 1 **Select the images.**
- 2 **Click [Export].**
→ The [Export] menu appears.
- 3 **Click [Export Still Images].**
→ The settings window appears.
- 4 **Specify desired settings.**
 - For detailed information, click the [?] button and refer to the Help displayed.
- 5 **Click [Finish].**
→ The processing window appears and the settings are executed.

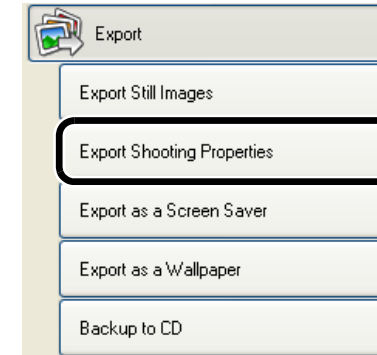


! You cannot export RAW images.

Exporting Shooting Properties

You can export as a text file the shooting properties recorded to the image when the shot was taken.

- 1 **Select the image.**
- 2 **Click [Export].**
→ The [Export] menu appears.
- 3 **Click [Export Shooting Properties].**
→ The settings window appears.
- 4 **Specify desired settings.**
 - For detailed information, click the [?] button and refer to the Help displayed.
- 5 **Click [Finish].**
→ The processing window appears and the settings are executed.



Cover/Table of Contents

Introduction

Viewing and Classifying Images

Editing and Exporting Images

Printing Images

Internet Function and Specifying Preferences

Troubleshooting

Index

Exporting an Image as a Screen Saver

You can export a JPEG image as a file for a computer screen saver.

1 Select the image.

2 Click [Export].

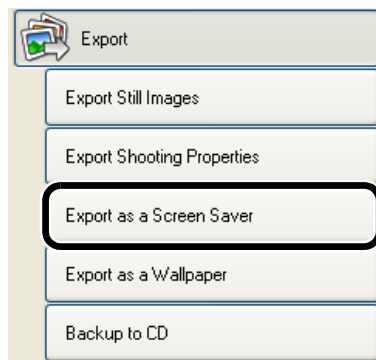
→ The [Export] menu appears.

3 Click [Export as a Screen Saver].

→ The settings window appears.

4 Specify desired settings.

- For detailed information, click the [?] button and refer to the Help displayed.



5 Click [Finish].

→ The processing window appears and the settings are executed.

! You cannot export RAW images.

Exporting an Image as Wallpaper

You can export a JPEG image as a file for wallpaper for a computer.

1 Select the image.

2 Click [Export].

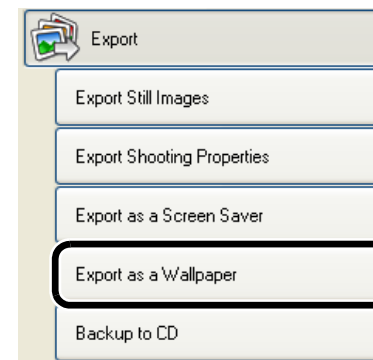
→ The [Export] menu appears.

3 Click [Export as a Wallpaper].

→ The settings window appears.

4 Specify desired settings.

- For detailed information, click the [?] button and refer to the Help displayed.



5 Click [Finish].

→ The processing window appears and the settings are executed.

! You cannot export RAW images.

Cover/Table of Contents

Introduction

Viewing and Classifying Images

Editing and Exporting Images

Printing Images

Internet Function and Specifying Preferences

Troubleshooting

Index

Writing Images to a CD

You can write images to a CD-R/CD-RW.

- This function is only compatible with a computer that has Windows XP pre-installed and is equipped with a standard CD-R/CD-RW drive.

1 Select the images.

2 Click [Export].

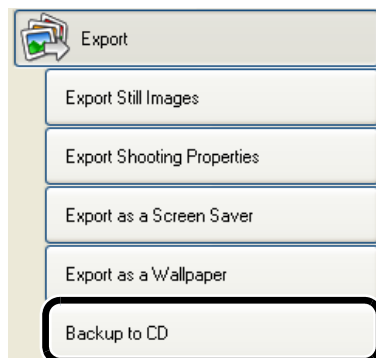
→ The [Export] menu appears.

3 Click [Backup to CD].

→ The settings window appears.

4 Specify desired settings.

- For detailed information, click the [?] button and refer to the Help displayed.



5 Click [Start Backup].

→ The processing window appears and the settings are executed.

Cover/Table of Contents

Introduction

Viewing and
Classifying Images

Editing and
Exporting Images

Printing Images

Internet Function
and Specifying
Preferences

Troubleshooting

Index



3 Printing Images

This chapter explains various ways to print images.

Printing Images

One Photo per Page Printing

You can print one photo per page.

1 Select the image.

2 Click [Print].

→ The [Print] menu appears.

3 Click [One Photo per Page Print].


→ The settings window appears.

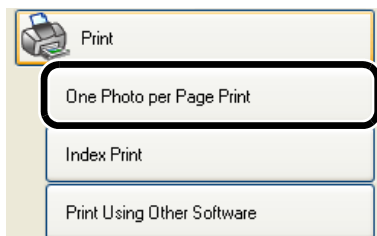
4 Specify desired settings.

● For detailed information, click the [?] button and refer to the Help displayed.

5 Click [Print] button.

→ The processing window appears and the image is printed.

 If Easy-PhotoPrint, the dedicated printing software for Canon PIXMA/BJ Printers, is installed, it becomes the default software for printing (p.3-2). To cancel printing with Easy-PhotoPrint and switch to printing with ZoomBrowser EX independently, select [Use the Print Function in ZoomBrowser EX] in the [Printing] tab sheet of the preferences (p.4-2).



● Click on the item to display its page.

Printing Images 3-1

One Photo per Page Printing 3-1

Index Printing 3-1

Printing with Easy-PhotoPrint 3-2

Printing Using Other Software 3-2

Index Printing

You can print multiple images in index format.

1 Select the images.

2 Click [Print].

→ The [Print] menu appears.

3 Click [Index Print].

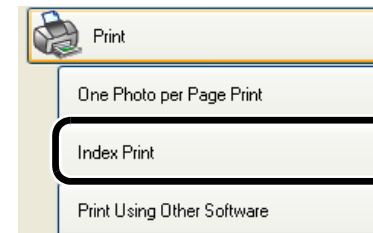
→ The settings window appears.

4 Specify desired settings.

● For detailed information, click the [?] button and refer to the Help displayed.

5 Click [Print] button.

→ The processing window appears and the images are printed.



Cover/Table of Contents

Introduction

Viewing and Classifying Images

Editing and Exporting Images

Printing Images

Internet Function and Specifying Preferences

Troubleshooting

Index



Printing with Easy-PhotoPrint

Easy-PhotoPrint is software exclusively for use with Canon PIXMA/BJ printers. If Easy-PhotoPrint is installed on your computer, you can print with Easy-PhotoPrint.

1 Select an image.

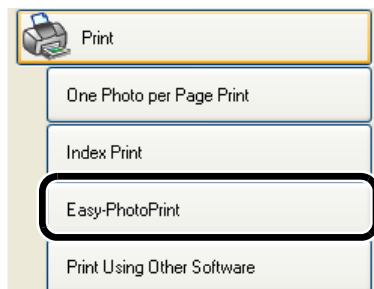
2 Click [Print].

→ The [Print] menu appears.

3 Click [Easy-PhotoPrint].

→ Easy-PhotoPrint starts up.

- Follow the instructions displayed to print the images.



! If Easy-PhotoPrint is not installed, [Easy-PhotoPrint] will not be displayed in the [Print] menu.

Printing Using Other Software

You can select software other than ZoomBrowser EX and print.

1 Select an image.

2 Click [Print].

→ The [Print] menu appears.

3 Click [Print Using Other Software].

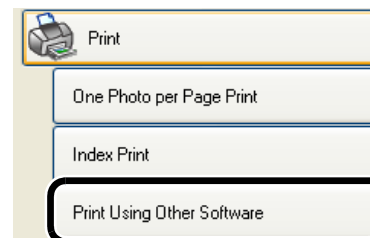
→ The settings window appears.

4 Select the software for printing and specify desired settings.

- For detailed information, click the [?] button and refer to the Help displayed.

5 Click the [Launch Software] button.

→ The software selected in step 4 starts. Follow the instructions displayed to print the images.



! If printing software compatible with ZoomBrowser EX is not installed, you will be unable to select printing software in step 4 for printing.

Cover/Table of Contents

Introduction

Viewing and Classifying Images

Editing and Exporting Images

Printing Images

Internet Function and Specifying Preferences

Troubleshooting

Index



4 Internet Function and Specifying Preferences

This chapter explains sending images with your e-mail software and specifying preferences for ZoomBrowser EX.

- Click on the item to display its page.

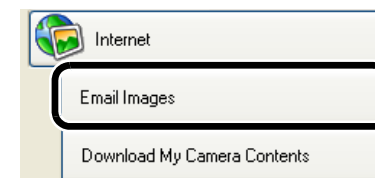
Internet Function	4-1
Sending an Image by E-mail.....	4-1
Modifying ZoomBrowser EX Settings	4-2
Task Button Display Settings	4-2
Specifying Preferences	4-2

Internet Function

Sending an Image by E-mail

You can attach an image to an e-mail and send it.

- 1 Select the image.**
- 2 Click [Internet].**
 - The [Internet] menu appears.
- 3 Click [Email Images].**
 - The settings window for the attached image appears.
- 4 Specify desired settings.**
 - For detailed information, click the [?] button and refer to the Help displayed.
- 5 Click the [Send or Save] button.**
 - The settings window for your e-mail software appears.
- 6 Specify desired settings.**
 - For detailed information, click the [?] button and refer to the Help displayed.
- 7 Click [Finish].**
 - Your e-mail software starts up.
 - Enter the necessary information and then send the message.



Cover/Table of Contents

Introduction

Viewing and
Classifying Images

Editing and
Exporting Images

Printing Images

Internet Function
and Specifying
Preferences

Troubleshooting

Index



Modifying ZoomBrowser EX Settings ■

Task Button Display Settings

You can specify which task buttons to show or hide.

- 1 Select the [Tools] menu ► [Customize].
- 2 Select the items you want to show.
 - Deselect the items you do not want to show.

Specifying Preferences

You can set various ZoomBrowser EX function settings.

- 1 Select the [Tools] menu ► [Preferences].
- 2 Specify desired settings.
 - For detailed information, click the [?] button and refer to the Help displayed.

Cover/Table of Contents

Introduction

Viewing and
Classifying Images

Editing and
Exporting Images

Printing Images

Internet Function
and Specifying
Preferences

Troubleshooting

Index

This chapter provides troubleshooting and explains how to uninstall the software.

- Click on the item to display its page.

Troubleshooting	5-1
Uninstalling the Software	5-2
Index	5-2

Troubleshooting

If you could not complete the installation correctly, software does not work, or you could not display images with ZoomBrowser EX, consult the items described below.

- For instructions on installing, refer to the “Software Guide” supplied with your camera.

Installation failed.

- **Are you using Windows XP under a setting other than [Computer administrator] privileges or using Windows 2000 under a setting other than [Administrator] privileges?**
 - You cannot install software if a user setting other than [Computer administrator] privileges or [Administrator] privileges is selected. Select the [Computer administrator] privileges user setting in Windows XP or the [Administrator] privileges user setting in Windows 2000. For detailed information on selecting the user setting, refer to your computer's instruction manual.

Software does not work.

- **Does your computer meet the system requirements for the software?**
 - Check the system requirements (p.0-1).
- **Is there enough RAM (memory)?**
 - Check the system requirements (p.0-1).
- **Is the screen resolution less than [1024 by 768 pixels]?**
 - Specify [1024 by 768 pixels] or more for the screen resolution (p.0-1).
- **Is the color quality less than [Medium (16 bit)]?**
 - Specify [Medium (16 bit)] or more for the color quality (p.0-1).
- **Are multiple applications running?**
 - Exit any applications other than ZoomBrowser EX. Even if your computer has the RAM capacity (memory) described in system requirements (p.0-1), if other application is running at the same time as ZoomBrowser EX, you may not have sufficient RAM (memory).

Could not display images with ZoomBrowser EX.

- **Did you try to display images other than the image types that are supported by ZoomBrowser EX?**
 - Check the supported images (p.0-1).

Cover/Table of Contents

Introduction

Viewing and Classifying Images

Editing and Exporting Images

Printing Images

Internet Function and Specifying Preferences

Troubleshooting

Index



Uninstalling the Software

- The following explanation uses the procedures for uninstalling the ZoomBrowser EX as an example for uninstalling other programs as well.
- For Windows XP Professional or Windows 2000, log in under [Computer administrator]/[Administrator] privileges.
 - Before starting the software uninstallation, exit all programs you are using and disconnect the dedicated cable from your computer.
 - To prevent computer malfunctions, always restart your computer after you have uninstalled the software. Re-installing the software without first restarting your computer is likely to result in computer malfunctions.

- 1
- Click the [Start] button ► select [All Programs] ([Programs] in versions other than Windows XP) ► [Canon Utilities] ► [ZoomBrowser EX] ► [ZoomBrowser EX Uninstall].
- 2
- Proceed with the uninstallation as directed by the on-screen messages.
- Software is uninstalled.

Index

C		Selecting the Image Display Mode	1-4
Classifying the Images into Folders.....	1-10	Sending an Image by E-mail.....	4-1
Converting and Saving JPEG Images	2-5	Specifying Preferences.....	4-2
D		Starting up the RAW Image Task	2-2
Displaying Images	1-3	Starting up the ZoomBrowser EX	1-1
Downloading Images from Your Camera .	1-3	Supported Images	0-1
E		System Requirements	0-1
Editing Images	2-1	T	
Exiting the RAW Image Task.....	2-2	Task Button Display Settings	4-2
Exiting the ZoomBrowser EX.....	1-1	U	
Exporting an Image as a Screen Saver	2-6	Uninstalling the Software	5-2
Exporting an Image as Wallpaper	2-6	V	
Exporting Images.....	2-5	Viewer Window	1-7
Exporting Shooting Properties	2-5	Viewing the Images as a Slide Show.....	1-8
M		W	
Merging Images.....	2-2	Writing Images to a CD.....	2-7
P		Z	
Panoramic Merging	2-2	Zoom Mode.....	1-4
Preview Mode.....	1-6	ZoomBrowser EX Main Window	1-2
Printing Images			
Index Printing.....	3-1		
One Photo per Page Printing.....	3-1		
Printing Using Other Software	3-2		
Printing with Easy-PhotoPrint	3-2		
Processing RAW Images.....	2-2		
Properties Window	1-8		
R			
RAW Image Task Image Quality Adjustment			
Window	2-4		
RAW Image Task Main Window	2-3		
Renaming the Files in a Single			
Operation.....	1-9		
S			
Scroll Mode.....	1-5		
Searching Images.....	1-10		
Selecting the Image.....	1-4, 1-5, 1-6		

Cover/Table of Contents

Introduction

1
Viewing and Classifying Images

2
Editing and Exporting Images

3
Printing Images

4
Internet Function and Specifying Preferences

Troubleshooting

Index

