

# Canon

## Digital Video Software

### Instruction Manual

Version 10

E



If you are using Windows operating system, use the supplied DIGITAL VIDEO SOLUTION DISK **For Windows**.  
If you are using Macintosh operating system, use the supplied DIGITAL VIDEO SOLUTION DISK **For Macintosh**.

# READ CAREFULLY BEFORE USING

## Canon Software License Agreement

**IMPORTANT - READ THIS AGREEMENT BEFORE USING THE SOFTWARE ON THE CD-ROM IN THIS BOX. BY USING THE SOFTWARE, YOU AGREE TO BE BOUND BY THE TERMS OF THIS AGREEMENT.**

**This is a license agreement (the "Agreement") between you and Canon Inc. ("Canon"). IF YOU DO NOT AGREE TO THE TERMS AND CONDITIONS OF THIS AGREEMENT, DO NOT USE THE SOFTWARE PROGRAM ON THE CD-ROM (INCLUDING ALL SOUND AND IMAGE DATA) AND THE USER MANUAL IN THIS BOX (COLLECTIVELY, THE "SOFTWARE") AND PROMPTLY RETURN THE SOFTWARE TO YOUR POINT OF PURCHASE FOR A REFUND.**

**In consideration of the right to use the SOFTWARE, you agree to abide by the terms and conditions of this Agreement.**

- 1. LICENSE:** Canon grants you the personal, non-exclusive right to use the SOFTWARE only on a single computer. You may physically transfer the SOFTWARE from one computer to another provided that the SOFTWARE is used on only one computer at a time. You shall not install or use the SOFTWARE on a network, multiple CPU, multiple site arrangement, or any other hardware configuration where the SOFTWARE is accessible to more than one CPU or to more than one user.

With respect to the sound and image data ("Data") contained in the Software, which are to be downloaded to the applicable Canon digital camera product, Canon grants you a personal, non-exclusive license to use the Data on a single Canon digital camera product only.

**YOU SHALL NOT ASSIGN, SUBLICENSE, RENT, LEASE, LOAN, CONVEY OR OTHERWISE USE, TRANSFER, COPY, TRANSLATE, CONVERT TO ANOTHER PROGRAMMING LANGUAGE, ALTER, MODIFY, DECOMPILE OR DISASSEMBLE THE SOFTWARE, IN WHOLE OR IN PART, EXCEPT AS EXPRESSLY PROVIDED IN THIS AGREEMENT.**

- 2. BACK-UP COPY:** You may make one copy of the SOFTWARE solely for back-up purposes, or copy the SOFTWARE onto the permanent storage device (e.g. a hard disk) of your computer and retain the original for back-up purposes. Any other copying of the SOFTWARE is a violation of this Agreement. You must reproduce and include the copyright notice on the back-up copy.
- 3. SUPPORT AND UPDATES:** Neither Canon, nor its subsidiaries, dealers or distributors will be responsible for providing maintenance or support for use of the SOFTWARE. No updates, fixes or support will be made available for the SOFTWARE.
- 4. LIMITED WARRANTY AND LIMITATION OF LIABILITY:** It is your responsibility to choose, maintain and match the hardware and software components of your computer system. Thus Canon does not guarantee uninterrupted service or correction of errors or that the functions or performance of the SOFTWARE will meet your requirements. THE SOFTWARE IS LICENSED ON AN "AS IS" BASIS AND WITHOUT WARRANTY OR CONDITION OF ANY KIND. The CD-ROM storing the SOFTWARE is warranted only against defective material under normal use for a period of ninety (90) days after purchase from an authorized Canon dealer as evidenced by your sales receipt. Your sole remedy for a defective CD-ROM shall be replacement of the same without charge when returned by you at your expense to your point of purchase and proven to be defective upon inspection. The Replacement CD-ROM will be warranted for the remainder of the original ninety (90) day warranty period of the defective CD-ROM. The limited warranty does not apply if the failure of the CD-ROM resulted from accident, abuse or misapplication of the SOFTWARE and shall not extend to anyone other than the original user of the SOFTWARE.

EXCEPT AS SPECIFICALLY SET FORTH IN THIS PARAGRAPH 4, CANON, CANON'S SUBSIDIARIES, DISTRIBUTORS AND DEALERS DISCLAIM ALL WARRANTIES, OR CONDITIONS, EXPRESS OR IMPLIED, INCLUDING ANY WARRANTY OR CONDITION OF MERCHANTABILITY OR FITNESS FOR A PARTICULAR PURPOSE, WITH RESPECT TO THE SOFTWARE.

NEITHER CANON NOR ANY OF CANON'S SUBSIDIARIES, DISTRIBUTORS OR DEALERS IS LIABLE FOR ANY DAMAGES HOWSOEVER CAUSED, INCLUDING WITHOUT LIMITATION, DIRECT, CONSEQUENTIAL OR INCIDENTAL LOSS OR DAMAGE INCLUDING LOSS OF PROFITS, EXPENSE OR INCONVENIENCE HOWSOEVER CAUSED OR ARISING OUT OF THE SOFTWARE OR THE USE THEREOF.

NEITHER CANON, NOR ANY OF CANON'S SUBSIDIARIES, DISTRIBUTORS OR DEALERS SHALL HAVE ANY OBLIGATION TO INDEMNIFY YOU AGAINST ANY CLAIM OR SUIT BROUGHT BY A THIRD PARTY ALLEGING THAT THE SOFTWARE OR THE USE THEREOF INFRINGES ANY INTELLECTUAL PROPERTY OF SUCH THIRD PARTY.

SOME STATES, PROVINCES OR LEGAL JURISDICTIONS DO NOT ALLOW THE EXCLUSION OF IMPLIED WARRANTIES, OR THE LIMITATION OR EXCLUSION OF LIABILITY FOR INCIDENTAL OR CONSEQUENTIAL DAMAGES, OR PERSONAL INJURY OR DEATH RESULTING FROM NEGLIGENCE ON THE PART OF THE SELLER, SO THE ABOVE DISCLAIMERS AND EXCLUSIONS MAY NOT APPLY TO YOU.

5. **TERM:** This Agreement is effective upon your using the SOFTWARE and remains in effect until expiration of all copyright interests in the SOFTWARE unless earlier terminated. You may terminate this Agreement by destroying the SOFTWARE. This Agreement will also terminate without notice to you if you fail to comply with any of the terms of this Agreement and you must then promptly return the SOFTWARE. In addition, Canon may enforce its other legal rights.

6. **U.S. GOVERNMENT RESTRICTED RIGHTS NOTICE:**

The SOFTWARE is a "commercial item," as that term is defined at 48 C.F.R. 2.101 (Oct 1995), consisting of "commercial computer software" and "commercial computer software documentation," as such terms are used in 48 C.F.R. 12.212 (Sept 1995). Consistent with 48 C.F.R. 12.212 and 48 C.F.R. 227.7202-1 through 227.7202-4 (June 1995), all U.S. Government End Users shall acquire the SOFTWARE with only those rights set forth herein. Manufacturer is Canon Inc./30-2, Shimomaruko 3-chome, Ohta-ku, Tokyo 146-8501, Japan.

7. **EXPORT RESTRICTIONS:** You agree to comply with all export laws and restrictions and regulations of the country involved, and not to export or re-export, directly or indirectly, the SOFTWARE in violation of any such laws and restrictions and regulations, or without all necessary approvals.

8. **SEVERABILITY:**

In the event that any provision of this Agreement is declared or found to be illegal by any court or tribunal of competent jurisdiction, such provision shall be null and void with respect to the jurisdiction of that court or tribunal and all the remaining provisions of this Agreement shall remain in full force and effect.

9. **CONTROLLING LAW:** The terms of this Agreement as it relates to purchases of the Software in the United States of America shall be governed and construed in all respects in accordance with the laws and regulations of the State of New York, without reference to choice of law principles. The terms of this Agreement as it relates to purchases of the Software in Canada shall be governed by the laws of the province of Ontario.

**10.OWNERSHIP:** All rights, including but not limited to copyrights and trade secret rights, to the SOFTWARE belong to Canon, its affiliated corporations and third party licensors. Your use of the SOFTWARE is subject to the laws of the United States, and Canada, and other applicable copyright and trademark laws, and nothing in this Agreement constitutes a waiver of the rights of Canon, its affiliated corporations and third party licensors under such laws. You only own the CD-ROM media in which the Software is stored. Except as expressly provided herein, no license or right, express or implied, is hereby conveyed or granted by Canon to you for any intellectual property of Canon. Nothing contained in Paragraph 1 shall be construed to give Canon any ownership rights in any images, graphics or textual material that you save in connection with the Software.

You may not modify, remove or delete any or all copyright notices (i) which are contained in the Software, including any copy thereof, and (ii) which are on the original CD-ROM and on the medium of a back-up copy made pursuant to Section 2 above.

**11.ACKNOWLEDGEMENT: BY USING THE SOFTWARE, YOU ACKNOWLEDGE THAT YOU HAVE READ THIS AGREEMENT, UNDERSTOOD IT, AND AGREE TO BE BOUND BY ITS TERMS AND CONDITIONS. YOU ALSO AGREE THAT THIS AGREEMENT IS THE COMPLETE AND EXCLUSIVE STATEMENT OF AGREEMENT BETWEEN YOU AND CANON CONCERNING THE SUBJECT MATTER HEREOF AND SUPERSEDES ALL PROPOSALS OR PRIOR AGREEMENTS, VERBAL OR WRITTEN, AND ANY OTHER COMMUNICATIONS BETWEEN THE PARTIES RELATING TO THE SUBJECT MATTER HEREOF. NO AMENDMENT TO THIS AGREEMENT SHALL BE EFFECTIVE UNLESS SIGNED BY A DULY AUTHORIZED OFFICER OF CANON.**

# Contents

**E**

<b>READ CAREFULLY BEFORE USING .....</b>	<b>2</b>
Canon Software License Agreement .....	2
<b>Read This First .....</b>	<b>8</b>
Checking Supplied Accessories .....	9

## Windows

<b>System Requirements .....</b>	<b>10</b>
<b>What Can Be Accomplished with the Software .....</b>	<b>12</b>
<b>Installing the Software .....</b>	<b>13</b>
Installing the Digital Video Software .....	13
Installing the TWAIN Driver/WIA Driver .....	17
<b>Connecting the Camcorder to a Computer .....</b>	<b>19</b>
<b>Downloading Images (ZoomBrowser EX) .....</b>	<b>21</b>
Starting ZoomBrowser EX .....	22
Downloading Images to the Computer .....	25
Using a PC Card Reader/Writer .....	26
<b>Using Other ZoomBrowser EX Functions .....</b>	<b>28</b>
Camera Window .....	28
Download Settings Window .....	29
Camera Settings Window .....	29
Main Window .....	30
Image Viewer Window .....	33
<b>Playing Back Movies From a Memory Card .....</b>	<b>34</b>
<b>Running a Slide Show .....</b>	<b>36</b>
<b>Searching Images .....</b>	<b>38</b>
Searching Images .....	38
Setting Parameters for Future Searches .....	41
<b>Adding Sound to an Image .....</b>	<b>43</b>
Adding Sound to an Image .....	43
Playing Back the Sound .....	43
<b>Attaching Still Images to E-mail Messages .....</b>	<b>44</b>
<b>Printing Still Images (PhotoRecord) .....</b>	<b>47</b>
Selecting the Print Mode and Number of Copies (DPOF Print Settings) .....	50
<b>Merging Panoramic Images (PhotoStitch) .....</b>	<b>52</b>
<b>Exporting Images .....</b>	<b>55</b>
<b>Adding Still Images from Your Computer to the Memory Card .....</b>	<b>58</b>
Adding Still Images to the Memory Card .....	58
Adding Sample Images to the Memory Card .....	60
<b>Saving Images on CD-R/RW Disks (Windows XP Only) .....</b>	<b>63</b>
<b>Customizing Your Camcorder with the My Camera Settings .....</b>	<b>65</b>
Saving the My Camera Settings to the Camcorder .....	65
My Camera Window .....	67
Adding Still Images to the My Camera Window .....	68

Creating an Original Sound File and Adding it to the My Camera Window .....	69
Setting ZoomBrowser EX to Start Automatically .....	72
Auto-Downloading Settings .....	76
Uninstalling the Software .....	79
Uninstalling ZoomBrowser EX .....	79
Uninstalling the TWAIN Driver/WIA Driver .....	80
Troubleshooting .....	81

## Macintosh

System Requirements .....	86
What Can Be Accomplished with the Software .....	87
Installing the Software .....	88
Connecting the Camcorder to a Computer .....	91
Downloading Images (ImageBrowser) .....	92
Starting ImageBrowser .....	92
Downloading Images to the Computer .....	95
Using a PC Card Reader/Writer .....	98
Using Other ImageBrowser Functions .....	99
Camera Window .....	99
Camera Settings Window .....	100
Browser Window .....	101
Image Viewer Window .....	102
Displaying the Image Information .....	103
[View] Menu .....	104
Displaying Images in TimeTunnel .....	105
Playing Back Movies From a Memory Card .....	106
Running a Slide Show .....	107
Adding Sound to a Still Image .....	108
Adding Sound to a Still Image .....	108
Playing Back the Sound .....	109
Using the Sound Panel .....	109
Attaching Images to E-mail Messages .....	110
Printing Still Images (ImageBrowser) .....	113
The Print Window .....	115
Adjusting Image Quality and Printing (Exif 2.2 Compliant) .....	116
Selecting the Print Mode and Number of Copies (DPOF Print Settings) .....	118
Merging Panoramic Images (PhotoStitch) .....	119
Exporting Images .....	121
Adding Still Images from Your Computer to the Memory Card .....	123
Adding Still Images to the Memory Card .....	123
Adding Sample Images to the Memory Card .....	124
Customizing Your Camcorder with the My Camera Settings .....	126
Displaying the My Camera Window .....	126

My Camera Window .....	128
Saving the My Camera Settings to the Camcorder .....	129
Adding Still Images to the My Camera Window .....	130
<b>Uninstalling the Software .....</b>	<b>131</b>
<b>Troubleshooting .....</b>	<b>132</b>

## Read This First

### Disclaimer

- While every effort has been made to ensure that the information contained in this guide is accurate and complete, no liability can be accepted for any errors or omissions. Canon reserves the right to change the specifications of the hardware and software described herein at any time without prior notice.
- No part of this guide may be reproduced, transmitted, transcribed, stored in a retrieval system, or translated into any language in any form, by any means, without the prior written permission of Canon.
- Canon makes no warranties for damages resulting from corrupted or lost data due to mistaken operation or malfunction of the camcorder, the software, memory cards (MultiMediaCards or SD Memory Cards), personal computers, or peripheral devices, or due to use of a memory card not formatted by a Canon camcorder.

### Trademark Acknowledgments

- Canon is a registered trademark of Canon Inc.
- Macintosh and Mac OS are trademarks of Apple Computer Inc., registered in the United States and other countries.  
iPhoto and QuickTime are trademarks of Apple Computer, Inc.
- Microsoft® and Windows® are either registered trademarks or trademarks of Microsoft Corporation in the United States and/or other countries.
- Other names and products not mentioned above may be registered trademarks or trademarks of their respective companies.

Copyright © Canon Inc. 2004 All rights reserved.

### Safety Precautions

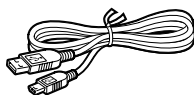
Do not play the supplied CD-ROM(s) in any CD player that does not support data CD-ROMs. Playing the CD-ROM(s) in an audio CD player (music player) could damage the speakers. It is also possible to suffer from hearing loss from listening with headphones to the loud sounds of a CD-ROM played on a music CD player.



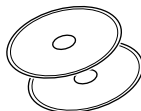
## Checking Supplied Accessories

Use the following accessories to download recorded images from a memory card to your computer.

- IFC-300PCU USB Cable



- DIGITAL VIDEO SOLUTION DISK For Windows
- DIGITAL VIDEO SOLUTION DISK For Macintosh



- Windows users: Move on to p. 10.
- Macintosh users: Move on to p. 86.

The explanations in this manual use mainly Windows XP and Mac OS X version 10.2 screen shots.

## Windows System Requirements

Please install the software on a computer meeting the following minimum requirements.

<b>OS:</b>	Windows 98 (First or Second Edition) Windows Me Windows 2000 Windows XP (Home Edition, Professional) *Proper operation is not guaranteed on an OS that has been upgraded from a previous version.
<b>Computer Model:</b>	Computers that come with above OS preinstalled and have built-in USB ports.
<b>CPU:</b>	Windows 98/Windows Me/Windows 2000: Pentium 150 MHz or better Windows XP: Pentium 300 MHz or better
<b>RAM:</b>	Windows 98/Windows Me/Windows 2000: 64 MB or more Windows XP: 128 MB or more
<b>Interface:</b>	USB: only preinstalled Windows 98/Windows Me/Windows 2000/Windows XP systems with built-in USB ports
<b>Free Hard Disk Space:</b>	<ul style="list-style-type: none"><li>• Canon Utilities<ul style="list-style-type: none"><li>– ZoomBrowser EX: 200 MB or more (Including the PhotoRecord printing program)</li><li>– PhotoStitch: 40 MB or more</li></ul></li><li>• DV TWAIN Driver: 25 MB or more</li><li>• DV WIA Driver: 25 MB or more</li></ul>
<b>Display:</b>	800 × 600 pixels/High Color (16 bit) or better, 1,024 × 768 pixels or better is recommended



- The USB interface is only supported for those computers that come with Windows 98/Windows Me/Windows 2000/Windows XP preinstalled and have built-in USB ports.
- Proper operation is not guaranteed on a dual CPU PC or on a user-built PC.
- Proper operation is not guaranteed on any particular system, even if it meets the requirements outlined above.
- A CD-ROM drive is required to install the software.
- Connect the USB cable directly to one of the computer's main USB ports. The interface may not function correctly if the camcorder is connected via a USB hub.

- The connection may not operate correctly if you are using other USB devices, excluding USB mice or keyboards, at the same time. If this occurs, disconnect the other devices from the computer and try reconnecting the camcorder.
- Do not connect two or more camcorders to the same computer via the USB interface. The connections may not operate correctly.
- Not all operations performed with a connection to a USB 2.0 compatible board can be guaranteed.

## What Can Be Accomplished with the Software

This topic introduces the main features of the software programs contained on the DIGITAL VIDEO SOLUTION DISK For Windows.

### ■ **TWAIN Driver** (📖 17)

TWAIN Driver is the driver software for Windows 98 and Windows 2000 that is required for downloading images from a memory card to a computer.

### ■ **WIA Driver** (📖 18)

WIA Driver is the driver software for Windows Me that is required for downloading images from a memory card to a computer.

### ■ **ZoomBrowser EX** (📖 21)

- Downloading images from a memory card to your computer.
- Categorizing and organizing large volumes of images.
- Creating mail attachments from still images. (Your e-mail software needs to be enabled as MAPI client.)

### ■ **PhotoRecord** (📖 47)

- Laying out and printing still images.
- Printing indexes.
- Creating still image albums.

### ■ **PhotoStitch** (📖 52)

Merging panoramic images.

This instruction manual explains how to install the software, what you can do with the main features and how to operate them. For more detailed operational instructions, refer to the Help menu of each software program.

## Installing the Digital Video Software



- Before you connect the camcorder to the computer with the USB cable for the first time, you must install one of the following drivers onto the computer.
  - Windows 98/Windows 2000: TWAIN Driver (📖 17)
  - Windows Me: WIA Driver (📖 18)
- Users of Windows 2000 or Windows XP must first log in as an Administrator to install programs.



### **Windows XP Users:**

Your digital video camcorder is equipped with the standard Picture Transfer Protocol (PTP). This protocol enables you to download images by simply connecting the camcorder to a computer with the USB cable (the software such as the [Scanner and Camera Wizard] starts automatically). However, please note that there are several limitations to downloading images with this method. To avoid these problems, install ZoomBrowser EX to download images.

- It may take a few minutes, after connecting the camcorder, until you can download images.
- Images protected on the camcorder may lose this setting once they are downloaded to the computer.

- 1. Close any programs that are running.**
- 2. Set the DIGITAL VIDEO SOLUTION DISK For Windows in the computer's CD-ROM drive.**

- The installer panel opens automatically.
- If the installer panel does not appear automatically, use the following procedures to display it.

### **Windows 98, Windows Me, Windows 2000:**

1. Double-click the [My Computer] icon.
2. Right-click the CD-ROM icon and select [Open] from the displayed menu.
3. Double-click the [Setup.exe] icon.

## Installing the Software

### Windows XP:

1. Select [My Computer] from the [Start] menu.
1. Right-click the CD-ROM icon and select [Open] from the displayed menu.
3. Double-click the [Setup.exe] icon.

Depending on the setting of your computer, the file extension “.exe” may not appear.

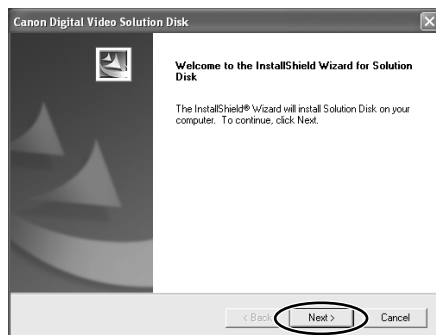
### 3. Select your language.

### 4. Click [Digital Video Software Installation].

For details about the DV Network Software, refer to the *DV Network Software Instruction Manual*.



### 5. Click [Next].

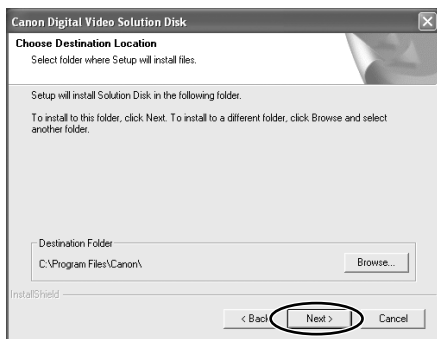


### 6. Select your country/region and click [Next].

## 7. Read the license agreement and click [Yes].

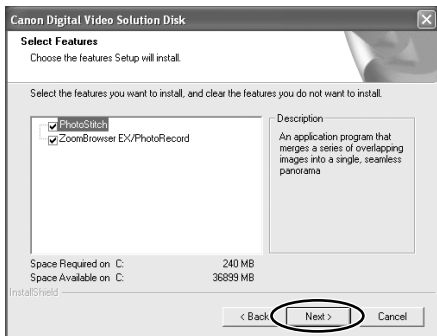
## 8. Confirm the installation destination and click [Next].

Normally, select (C:\Program Files\Canon\).



## 9. Select the programs you wish to install and click [Next].

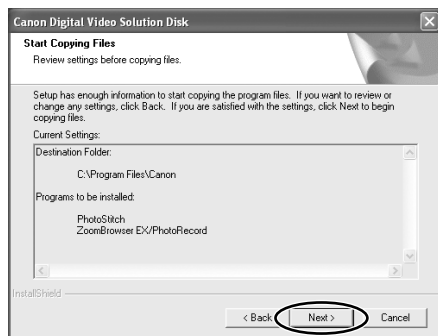
- Confirm that there is a check mark beside the name of the program you wish to install.
- Windows 98/Windows 2000/Windows Me: The respective USB driver appears.



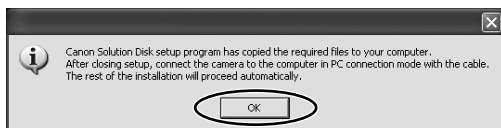
## Installing the Software

### 10. Review the installation settings and click [Next].

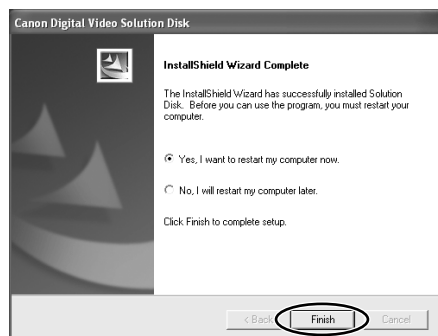
- Installation starts.
- If the “Digital signature not found” message appears, click [Yes].



- When the following window appears, click [OK]. This window only appears if you installed the TWAIN Driver or the WIA Driver.



### 11. When installation is complete, select [Yes, I want to restart my computer now.] and click [Finish].



### 12. When the computer has restarted and the regular desktop screen is displayed, remove the DIGITAL VIDEO SOLUTION DISK For Windows from the CD-ROM drive.





- When installation is complete, remove the DIGITAL VIDEO SOLUTION DISK For Windows before you connect the camcorder to the computer.
- Windows 98/Windows 2000/Windows Me: At this point, the files for the TWAIN Driver or WIA Driver have only been copied to your computer. To download images via USB connection, finish installing the TWAIN Driver or the WIA driver.

## Installing the TWAIN Driver/WIA Driver

Windows 98/Windows 2000/Windows Me: When you have installed the Digital Video Software, go on to install the TWAIN Driver or the WIA Driver. Users of Windows XP do not need to install a driver.

### Windows 98/Windows 2000

#### TWAIN Driver

TWAIN Driver is the driver software for USB connection to Windows 98 and Windows 2000 that is required to download images into ZoomBrowser EX.



Users of Windows 2000 must first log in as an Administrator to install the driver.

- 1. Insert a memory card containing images into the camcorder.**
- 2. Connect the Power Adapter to the camcorder.**
- 3. Turn the POWER switch to PLAY (VCR) and move the TAPE/CARD switch to CARD.**  
Wait until the card access indicator stops flashing.
- 4. Connect the camcorder to the computer using the supplied USB cable (□ 19).**

- If the "Digital signature not found" message appears, click [Yes].
- After a few moments, a message such as "New Hardware Found" appears and the TWAIN driver will be installed automatically.
- If you are prompted to restart the computer, restart the computer.
- When installation is complete, a window appears allowing you to select an application program to start.  
See *Downloading Images* (□ 21) for how to start ZoomBrowser EX and download images to the computer.

## Installing the Software

### Windows Me

#### WIA (Windows Image Acquisition) Driver

WIA Driver is the driver software for USB connection to Windows Me that is required to download images into ZoomBrowser EX.



#### **Read carefully before installing the WIA Driver:**

When you have set the WIA Driver to start a particular application program when you connect the camcorder, the program may cause an error message similar to the following to appear: "TWAIN data source not found. Reinstall the scanner software." If this happens, select [WIA-camera model] in the application program as the TWAIN device.

**1. Insert a memory card containing images into the camcorder.**

**2. Connect the Power Adapter to the camcorder.**

**3. Turn the POWER switch to PLAY (VCR) and move the TAPE/CARD switch to CARD.**

Wait until the card access indicator stops flashing.

**4. Connect the camcorder to the computer using the supplied USB cable (□ 19).**

- If the "Digital signature not found" message appears, click [Yes].
- After a few moments, a message such as "Found New Hardware" appears and the WIA driver will be installed.
- If you are prompted to restart the computer, restart the computer.
- When installation is complete, the Scanners and Cameras Wizard starts. See *Downloading Images* (□ 21) for how to start ZoomBrowser EX and download images to the computer.

## Connecting the Camcorder to a Computer

E



- Make sure the camcorder is being powered using the power adapter before connecting it to a computer.
- Be sure to install the Digital Video Software before you connect the camcorder to the computer.
- Connect the USB cable directly to one of the computer's main USB ports. The interface may not function correctly if the camcorder is connected via a USB hub.
- The connection may not operate correctly if you are using other USB devices, excluding USB mice or keyboards, at the same time. If this occurs, disconnect the other devices from the computer and try reconnecting the camcorder.
- Do not connect two or more camcorders to the same computer via the USB interface. The connections may not operate correctly.
- **Never allow the computer to go into standby (sleep) mode while a camcorder is connected via the USB interface. If it does happen, never disconnect the USB cable. Try to awaken the computer with the camcorder in the connected state. Some computers will not awaken properly if you disconnect the camcorder while they are in standby mode. Please refer to your computer manual for instructions regarding its standby mode.**

Windows

**1. Insert a memory card containing images into the camcorder.**

**2. Connect the power adapter to the camcorder.**

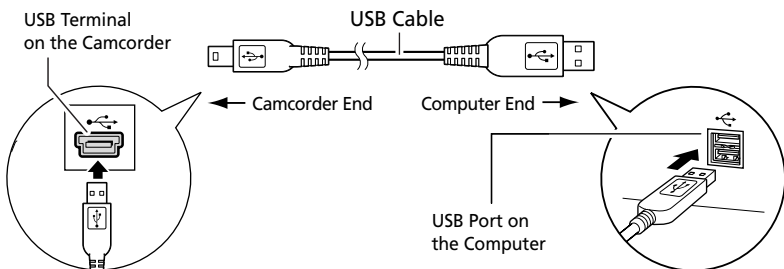
**3. Turn the POWER switch to PLAY (VCR) and move the TAPE/CARD switch to CARD.**

Wait until the card access indicator stops flashing.

**4. Attach the supplied USB cable to the computer's USB port and the camcorder's USB Terminal.**

- If the "Digital signature not found" message appears, click [Yes].
- Refer to your computer manual for the location of the computer's USB ports.
- See your camcorder instruction manual for connecting instructions.

## Connecting the Camcorder to a Computer



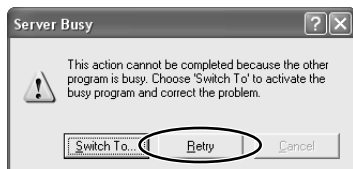
- Windows 98/Windows 2000/Windows Me: The first time you connect the camcorder to the computer via USB interface, install the TWAIN Driver or the WIA Driver (☞ 17,18).
- Windows XP: If a window appears prompting you to select an application program to start, select ZoomBrowser EX or Scanners and Cameras Wizard to start. If neither of these is selected, operation may not work correctly. You can also set the computer to start ZoomBrowser EX or Scanners and Cameras Wizard automatically (☞ 72).

## Downloading Images (ZoomBrowser EX)

Below explains the procedure for connecting a camcorder to a computer using the USB cable. For connecting a PC card reader/writer, see *Using a PC Card Reader/Writer* (□ 26).



- Observe following precautions when the camcorder's card access indicator is flashing (the camcorder is reading or writing from or to the memory card). Failure to do so may cause memory card data to become corrupted.
  - Do not open the memory card cover, remove the memory card or detach the USB cable.
  - Do not turn off the camcorder or the computer.
  - Do not change the position of the POWER switch or the TAPE/CARD switch.
- Format the memory card with the camcorder or from the Camera Settings Window (□ 29).
- Images recorded onto the memory card or downloaded to the hard disk are important original data files. Create a copy of the file first before working on it on your computer.
- **For Windows XP Users:**
  - Do not rotate the image in the [Windows Picture and Fax Viewer] or in the explorer view. The file format of the original image will be changed and the image can no longer be displayed in ZoomBrowser EX or on the camcorder.
  - If the Server Busy window appears when you connect the camcorder to the computer, click [Retry].



- You cannot connect the camcorder to a computer if the memory card contains more than 1800 images. For best performance, we recommend keeping the number of images on the memory card below 100 when downloading still images to the computer.

## Downloading Images (ZoomBrowser EX)

### Starting ZoomBrowser EX

Windows 98/Windows 2000/Windows XP

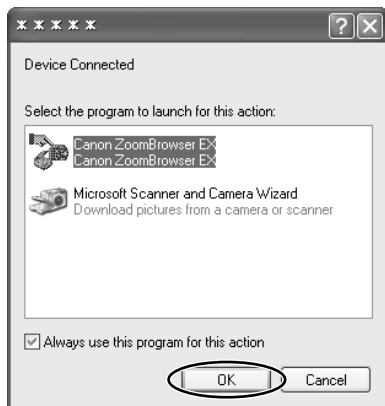
1. Insert a memory card containing images into the camcorder.
2. Connect the Power Adapter to the camcorder.
3. Turn the POWER switch to PLAY (VCR) and move the TAPE/CARD switch to CARD.

Wait until the card access indicator stops flashing.

4. Connect the camcorder to the computer using the supplied USB cable (19).

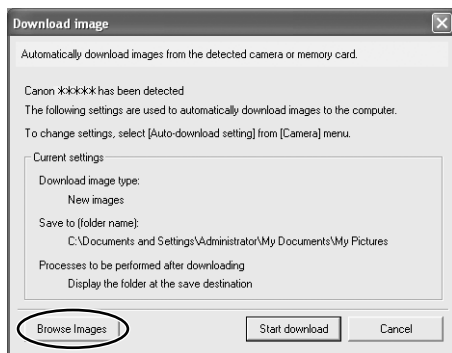
- After a few moments, a window appears allowing you to select an application program to start.
- Windows XP: If the window does not appear or if "PC CONNECT" does not appear on the camcorder screen, start ZoomBrowser EX and open the Camera Window following the steps 5 to 7 for Windows Me.

5. Select [Canon ZoomBrowser EX] and click [OK].



- ZoomBrowser EX starts.
- With Windows 2000, the name of the application program may not appear on the Canon Camera event window. In such case, double-click the [ZoomBrowser EX] icon on the desktop to start ZoomBrowser EX.
- If a camcorder and PC card reader are connected at the same time, a window appears allowing you to select the camcorder model. Confirm that [Canon Camera] or your camcorder model name is displayed and click [OK].

## 6. Click [Browse Images].



The Camera Window opens, displaying the camcorder images as thumbnails (small images).



For instructions on how to set the Auto-download settings, see page 76.

### Windows Me

1. Insert a memory card containing images into the camcorder.
2. Connect the Power Adapter to the camcorder.
3. Turn the POWER switch to PLAY (VCR) and move the TAPE/CARD switch to CARD.

Wait until the card access indicator stops flashing.

4. Connect the camcorder to the computer using the supplied USB cable (19).

The Scanners and Cameras Wizard automatically opens. Click [Cancel] to close the Wizard.

5. Double-click the [ZoomBrowser EX] icon on the desktop.

ZoomBrowser EX starts and the Main Window appears.



## Downloading Images (ZoomBrowser EX)

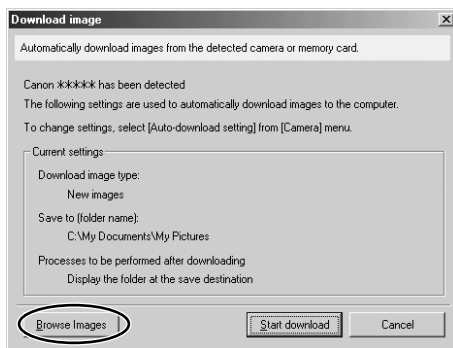
### 6. Click [Camera & Memory Card] in the Main Window.



### 7. Click [Browse and Download Images].



### 8. Click [Browse Images].



The Camera Window opens, displaying the camcorder images as thumbnails (small images).



For instructions on how to set the Auto-download settings, see page 76.



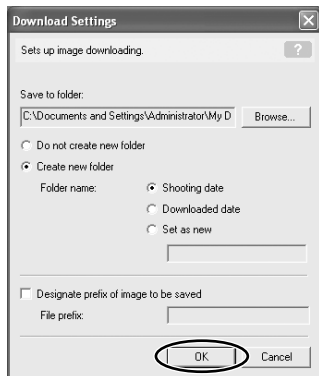
## Downloading Images to the Computer

### 1. In the Camera Window, select the image you wish to download and click [Download image].

- An orange frame appears around the selected image.
- You can select multiple images by continuously clicking on the images. Click on the image again to deselect.



### 2. In the Download Settings window, confirm the settings and click [OK] ( 29).



## Downloading Images (ZoomBrowser EX)

The Camera Window closes and the Main Window opens. The downloaded images appear in the Main Window.

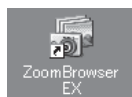


## Using a PC Card Reader/Writer

The basic operations of ZoomBrowser EX are the same as when you connect the camcorder to the computer. Follow the procedure below to open the Camera Window.

For instruction on how to connect the PC Card Reader/Writer, please refer to its manual.

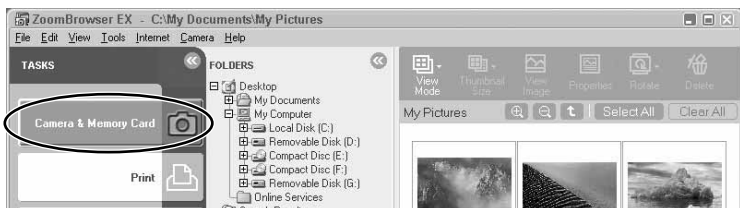
- 1. Insert a memory card containing images recorded with the camcorder into the reader.**
- 2. Windows 98/Windows 2000/Windows Me: Double-click the [ZoomBrowser EX] icon on the desktop.**



**Windows XP: When a window appears allowing you to select an application program to start, select [ZoomBrowser EX] and click [OK].**

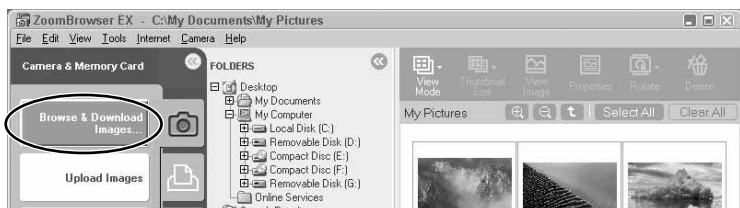
ZoomBrowser EX starts. Move on to the step 5.

### 3. Click [Camera & Memory Card].

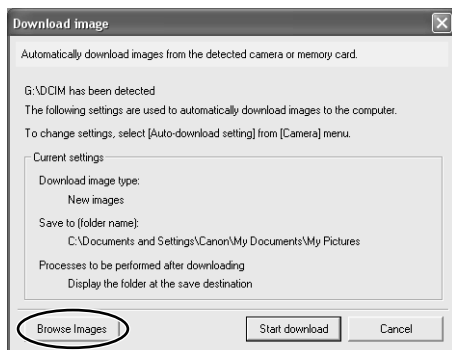


### 4. Click [Browse & Download Images].

If multiple PC card readers loaded with memory cards are connected or if a camcorder and a PC card reader are connected, a selection dialog will appear before the [Download image] window opens. Select one of the devices to proceed and click [OK].



### 5. Click [Browse Images].

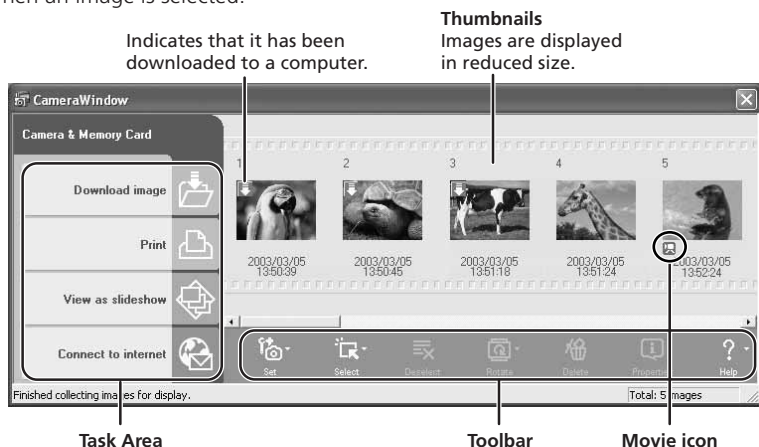


The Camera Window opens, displaying the camcorder images as thumbnails (small images).

# Using Other ZoomBrowser EX Functions

## Camera Window

The Camera Window opens when a connection to a camcorder is initiated. Images will be displayed as thumbnails (small images). Movies are displayed with the first scene as a still image, indicated with a movie icon. Buttons are activated when an image is selected.



### Task Area

- [Download image]:** Downloads selected images to the computer.
- [Print]:** Prints selected still images. Menu options: Layout Print and Contact Sheet Print.
- [View as slideshow]:** Starts a slide show after downloading the selected still images to the computer.
- [Connect to Internet]:** Attaches selected still images to an e-mail message.

### Toolbar

- [Set]:** Adjusts the connection settings and camcorder settings. Menu options: Reconnect, Camera Settings, Slide\*/DPOF, Add Image(s) and My Camera. (\*The Slide function cannot be used.)
- [Select]:** Selects images. Menu options: Select All, Select New, Select Print mark, Select Send mark, Select Slide Show mark and Invert Selection.
- [Deselect]:** Deselects images.
- [Rotate]:** Rotates still images. Menu options: 90 degree left, 90 degree right and 180 degree.
- [Delete]:** Deletes selected images.
- [Properties]:** Displays image information (such as shooting date/time and image size).
- [Help]:** Displays help topics.

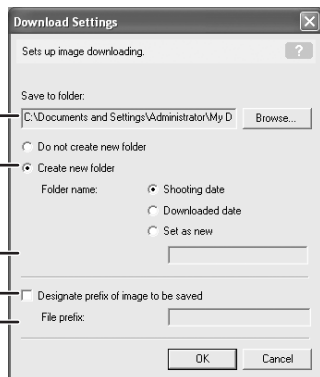
## Download Settings Window

The following window appears when you select a task in the Task Area of the Camera Window.

Select a folder in which you wish to download and save the image.

If you wish to create a new folder, select [Create new folder] and select the item you wish to use as folder name.

If you leave this box without check mark, the images will be named in the form of "IMG\_XXXX.JPG".  
If you place a check mark in this box, you can designate a file prefix. The images will be named "file prefix + XXXX.JPG".



## Camera Settings Window

You can adjust the date, time and owner settings in the Camera Settings window using the computer when the camcorder is connected. You can also check the battery charge and remaining memory card capacity.

1. In the Camera Window, click the [Set] button and select [Camera Settings] from the displayed menu.
2. Check or change the settings.  
Click [OK] to close the settings.

Input a camcorder owner name here (up to 31 characters).

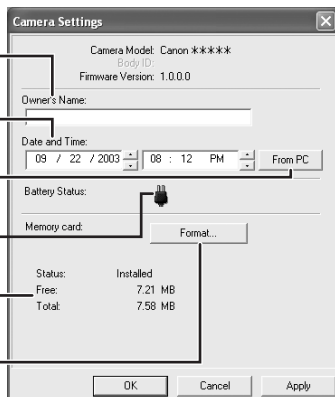
Set the date and time here.

Click this button to synchronize the camcorder to the computer's date and time settings.

Check the power status here.

Check the remaining memory card capacity here.

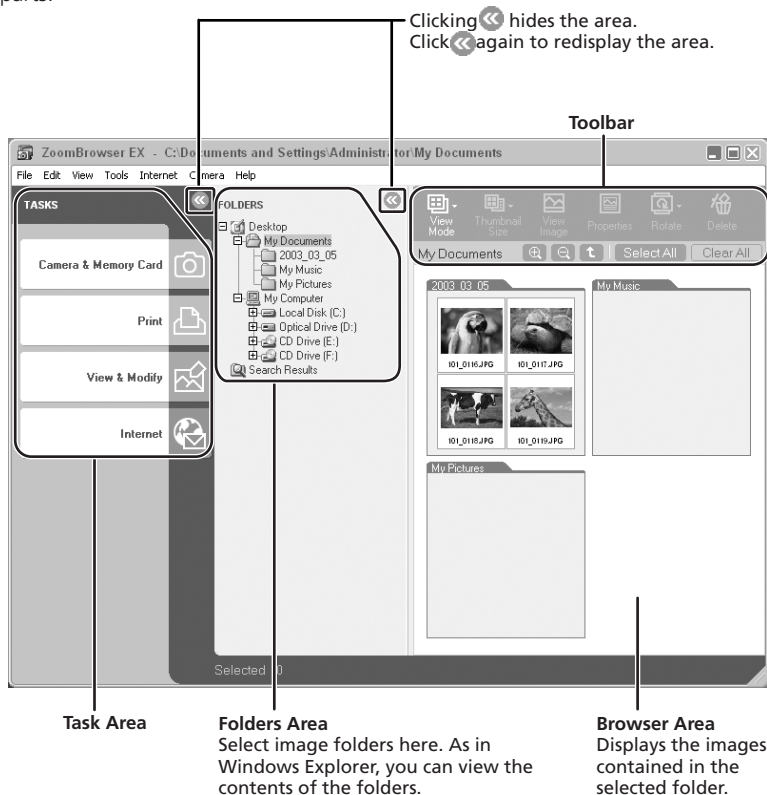
Click this button to format the memory card in the camcorder.



## Using Other ZoomBrowser EX Functions

### Main Window

ZoomBrowser EX's Main Window features various buttons and an image display area. This section introduces the names and functions of the various window parts.



### Task Area (Main Menu)

- [Camera & Memory Card]:** Displays the Camera Window.
- [Print]:** Prints selected still images. Menu options: Layout Print and Contact Sheet Print
- [View & Modify]:** Use this to view or edit images. Menu options: View as a Slide Show, Export Images, Edit Image, Stich Photos, Search and Backup to CD.
- [Internet]:** Attaches selected still images to an e-mail message.

## **Toolbar**

### **[View Mode]:**

Selects the view mode. Menu options: Scroll Mode, Zoom Mode and Preview Mode.

#### **Scroll Mode:**

Displays the images in the selected folder at a large, easy-to-view size. When there are more images than can fit in the Browser Area, a scroll bar appears at the right of the Browser Area. When a folder has been created within the selected folder, the folder appears as an icon.

#### **Zoom Mode:**

When a folder has been created within a folder, it displays all images within the nested folder. Selecting the magnifying glass (+ or -) and clicking a folder or an image in the Browser Area changes the size at which an image is displayed or the folder level. You can also zoom up by double-clicking an empty part of the Browser Area or the tab of a folder name.

#### **Preview Mode:**

Displays one image at a large size. You can review file name, comment, histogram and image information. Select the preview image from the bottom of the Main Window, or by clicking [Previous] or [Next].

### **[Thumbnail Size]:**

Selects the size at which images are displayed in the Browser Area. Menu options: 80 × 80, 160 × 160 and Column Number. It can only be selected in [Scroll Mode].

### **[View Image]:**

Displays a still image in the Image Viewer window, or opens a window for playing back a movie.

### **[Properties]:**

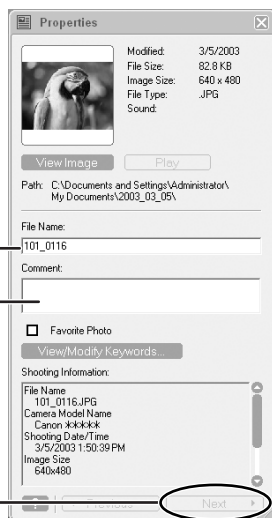
Displays image information (such as shooting date/time and image size).

If you select an image in the Browser Area while the Properties window is open, the information in the window switches to the contents of the selected image.

## Using Other ZoomBrowser EX Functions

You can change the file name  
or enter a comment.

Switch between images with  
this button when more than  
one image is selected.



**[Rotate]:**

Rotates selected still images.

**[Delete]:**

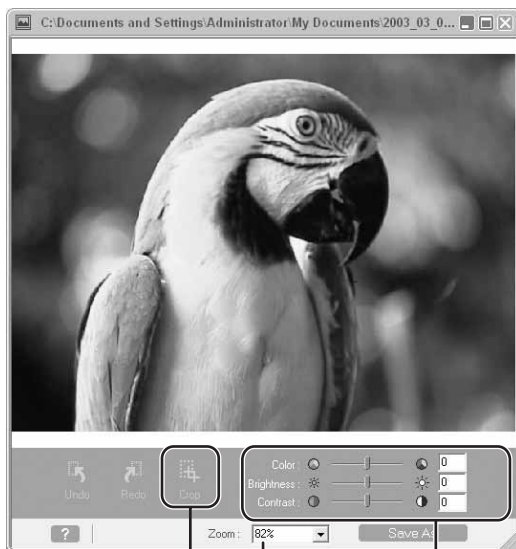
Deletes selected images.



## Image Viewer Window

The Image Viewer window appears when you double-click a still image, or when you select a still image and click [View Image].

E



### Crop

You can extract a part of the still image.

1. Click on the still image and drag to form a rectangular frame.  
You can move or change the size of the frame.
2. Click this button to extract the area within the frame.  
The extracted part of the still image appears.

### Zoom

You can change the zoom ratio.

### Color, Brightness and Contrast

You can adjust the color, brightness and contrast by dragging the respective slide.

## Playing Back Movies From a Memory Card

In the Camera Window and Main Window, movies are displayed with the first scene as a still image with a movie icon (  ). When you double-click the thumbnail in the Main Window, QuickTime Player starts and plays back the movie.



- If QuickTime 3.0 or a later version is not already installed on your computer, install the QuickTime from the DIGITAL VIDEO SOLUTION DISK. Place the disk in the CD-ROM drive and click [QuickTime Installation] in the installer panel.
- Do not double-click a movie file (.AVI extension) in Windows Explorer. That will start Windows Media Player, which may not support this file type. To play back movies, double-click the thumbnail with a movie icon in the Main Window's Browser Area.

### 1. In the Main Window, double-click a thumbnail with a (movie) icon.

QuickTime Player starts.



## 2. Click the ► (play) button in QuickTime Player.

The movie will be played back.

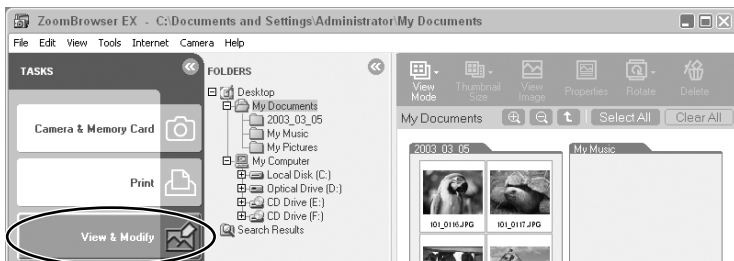


E

# Running a Slide Show

You can view selected still images in a slide show. Movies cannot be selected for a slide show.

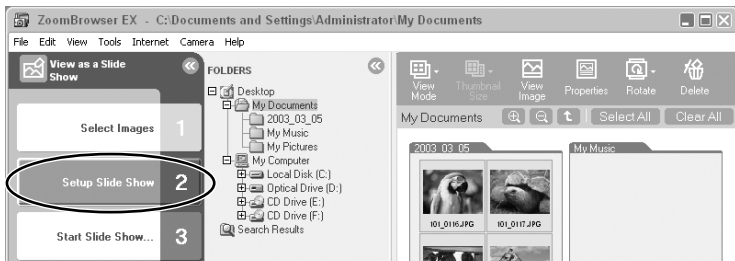
## 1. Click [View & Modify] in the Main Window.



## 2. Click [View as a Slide Show].

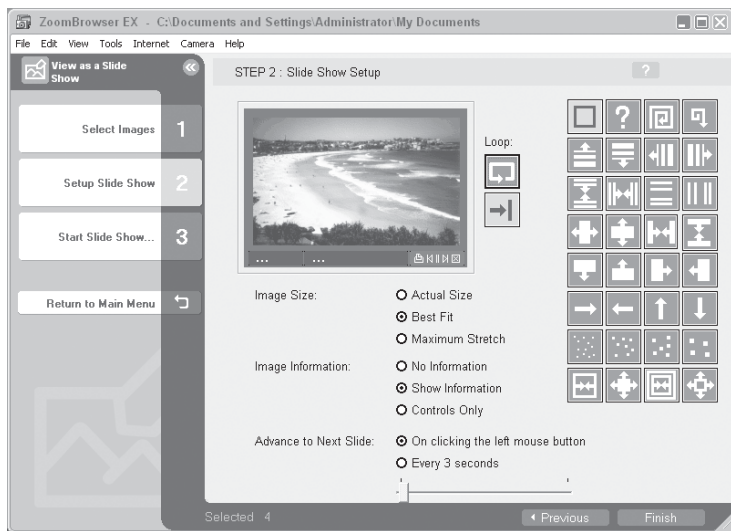


## 3. Select the images and click [Setup Slide Show].



## 4. Select the slide show settings.

- [Image Size]: Select the size of the still images.
- [Image Information]: Select to show image information such as file name or title.
- [Advance to Next Slide]: Select to advance manually or automatically. When you select "Every 3 seconds", you can select the interval in the control below (from 1 to 120 seconds).
- [Loop]: Select to stop the slide show after the last image or to continuously run it in a loop.
- [Effect]: Select the transition effect to be used when moving from one slide to another. When you click an effect, you can check the effect in the preview window.



## 5. Click [Start Slide Show].

Click  in the lower right corner to end the slide show.

## Searching Images

You can search for images marked as your Favorites or by modification date, shooting date or keywords. You can mark images as Favorites (🔖 41) and add keywords (🏷️ 41).

## Searching Images

### 1. Click [View & Modify] in the Main Window.

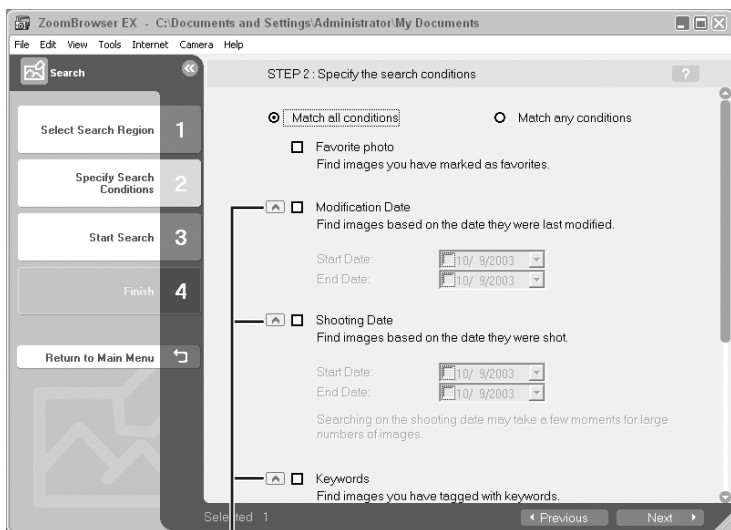


### 2. Select the folder in which you wish to search for the image and click [Search].



### 3 Specify the search conditions.

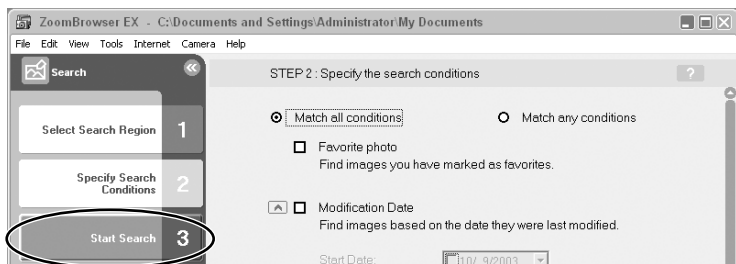
- Place a check mark beside the parameter you wish to use.
- If you selected [Modification Date] or [Shooting Date], set the date range.
- If you selected [Keywords], select the keywords.



Clicking here hides the search parameter details.

### 4. Click [Start Search].

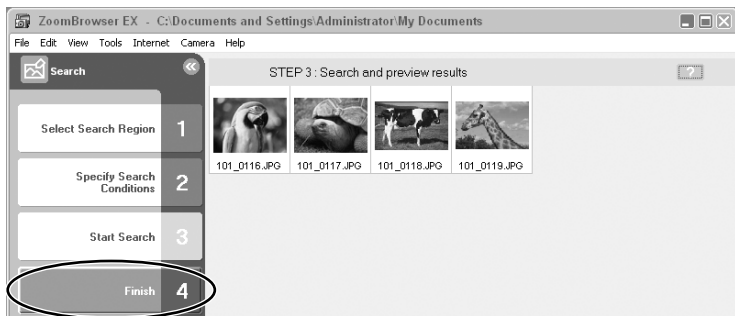
The images matching the conditions will be displayed.



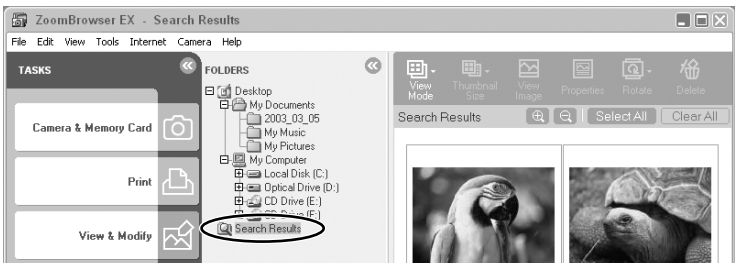
## Searching Images

### 5. Click [Finish].

To change the search parameters and perform another search, click [Specify Search Condition] and repeat steps 3-4.



The images of the search result are displayed in the [Search Results] folder. You can print or copy these images to another folder. The images will remain in this folder until ZoomBrowser EX is closed or another search is performed.






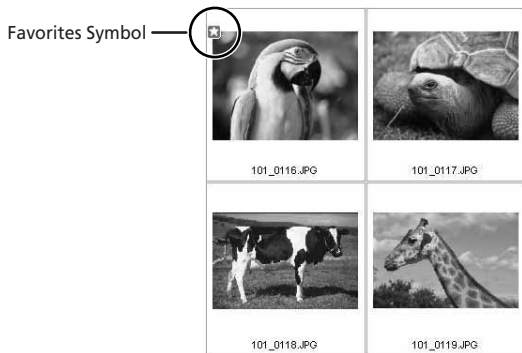
## Setting Parameters for Future Searches

In Preview Mode, you can mark images as Favorites, and open the [View/Modify Keywords] window by clicking [View/Modify Keywords] in the Main Window.

### Making an Image as Favorite

1. Select an image in the Browser Area and click  (Properties).
2. Place a check mark beside [Favorite Photo] and close the [Properties] window.

The symbol shown below is displayed on images marked as Favorites



### Adding Keywords to Images

1. Select an image in the Browser Area and click  (Properties).

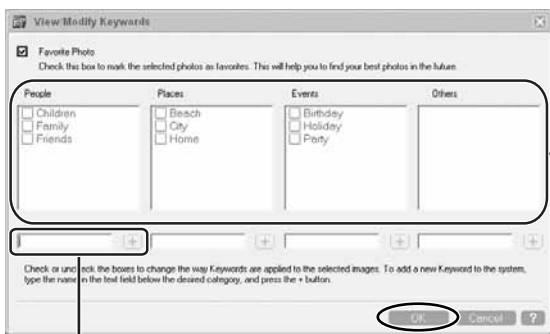
## Searching Images

### 2. Click [View/Modify Keywords].

You can also select [View/Modify Keywords] from the [Tools] menu.



### 3. Place a check mark beside the keyword you wish to use and click [OK].



Place a check mark beside the keyword you wish to use.

To add a keyword, type the new word in the box and click [+].



You can add and delete keywords. Open the Manage keywords window by selecting [Manage keywords] from the [Tools] menu.

## Adding Sound to an Image

You can add a sound to an image. The sound file needs to be in WAVE format (extension “.wav”) or in MIDI format (extension “.mid” or “.midi”). The sound cannot be played back on the camcorder.

E

### Adding Sound to an Image

#### 1. In the Main Window, select an image and select [Add/Remove Sound] from the [Edit] menu.

The Sound window appears.




#### 2. Click [Add].

A window appears allowing you to select a file.




#### 3. Select the sound file and click [Open].

#### 4. Click [OK].

-  appears on the image.
- The sound file will be copied to the same folder as the image.



To remove sound from an image, select [Remove] on the Sound Window in step 2.  disappears and the copied sound file will be deleted.

### Playing Back the Sound

In the Main Window, select the image with the sound attachment and select [Play Sound] from the [Edit] menu.

The Play Sound window appears and the sound will be played back.

# Attaching Still Images to E-mail Messages

You can attach selected still images to an E-mail message.



To use this function, the e-mail software must be enabled as MAPI client. For details, refer to the instruction manual of the e-mail software.

## 1. Click [Internet] in the Main Window.

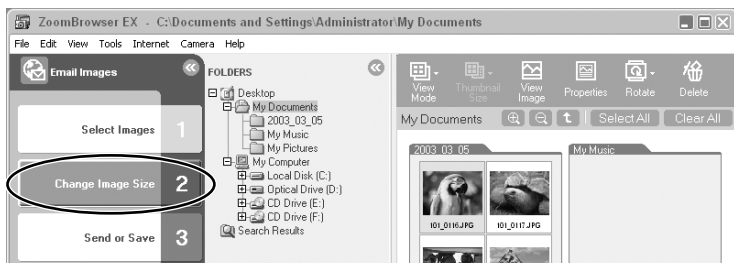


## 2. Click [Email Images].



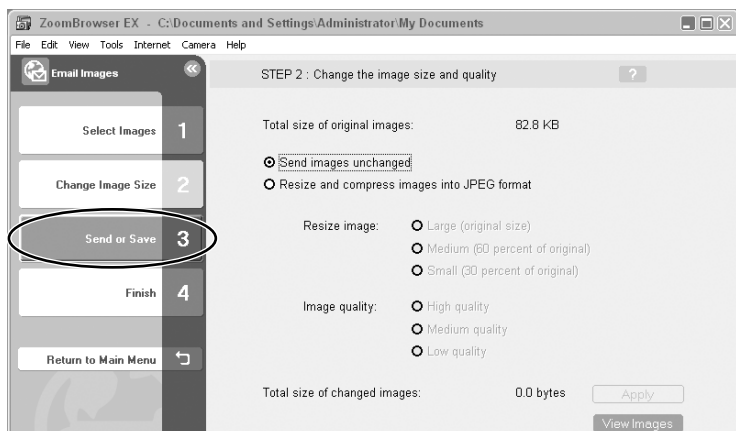
### 3. Select the still images you wish to send and click [Change Image Size].

You can select multiple still images by continuously clicking on the still images. Click on the still image again to deselect.



### 4. Select image size and quality, and click [Send or Save].

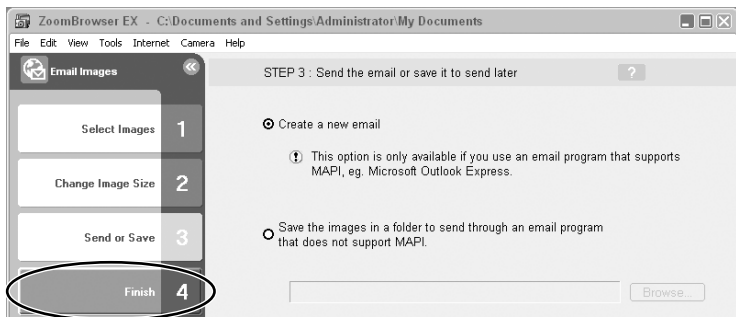
- If you wish to send the still image without changes, select [Send images unchanged]. Normally select [Resize and compress images into JPEG format].
- [Resize Image]: Select the reduction ratio to the original still image.
- [Image quality]: The lower the quality, the coarser becomes the still image and smaller the file size.
- Pressing [Apply] displays the file size after the compression as [Total size of changed images].
- You can check the compressed still image by pressing [View Images].



## Attaching Still Images to E-mail Messages

### 5. Select to send still images by e-mail or to save the still images in a folder and click [Finish].

- If you selected [Create a new email], your e-mail software starts and the selected still images appear as an attachment in the message window. Input address, subject and your comments and send the message. E-mail software not supporting MAPI does not start automatically. In this case, select [Save the images in a folder...].
- If you select [Save the images in a folder...], click [Browse] and select the destination folder. Start your e-mail software and attach the saved still image to a message.



# Printing Still Images (PhotoRecord)

PhotoRecord is a printing program. You can use this program to lay out the still images for printing. You can also create original albums and save them to your computer. Movies cannot be printed.



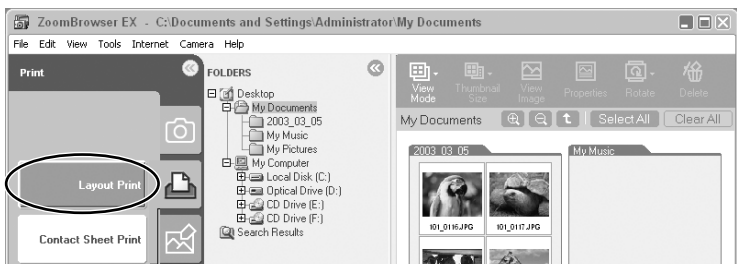
- Do not open the memory card cover, remove the memory card, detach the USB cable or turn off the camcorder while data is being transferred to the printer (when the camcorder's card access indicator is flashing). Doing so may cause memory card data to become corrupted.
- If you are using a network printer and the printer name (including the network path) exceeds 31 characters, it may not be possible to print from PhotoRecord. If this happens, open [Control Panel] on the [Start] menu. Click the [Printers] icon and change the name of the your printer, limiting its length to within 31 characters.

## 1. Click [Print] in the Main Window.



## 2. Click [Layout Print].

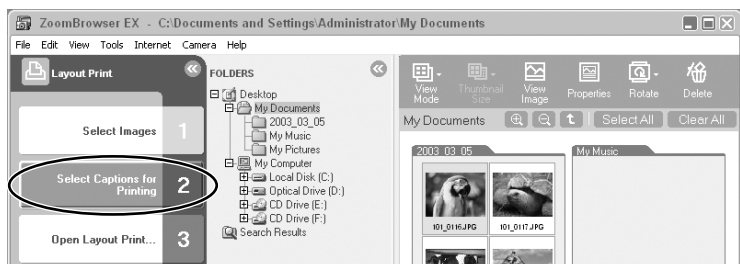
When you wish to print an index, select [Contact Sheet Print].




## Printing Still Images (PhotoRecord)

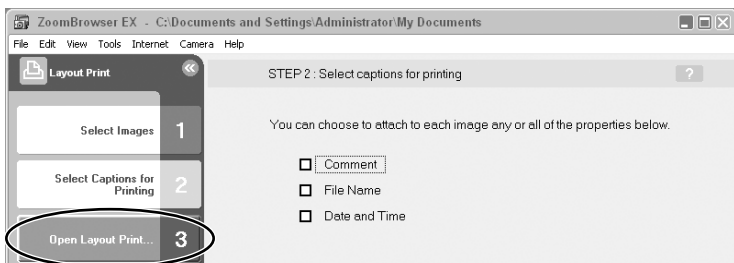
### 3. Select the still image you wish to print and click [Select Captions for Printing].

You can select multiple images by continuously clicking on the images. Click on the image again to deselect.



### 4. Select the image information you wish to include in the print and click [Open Layout Print].

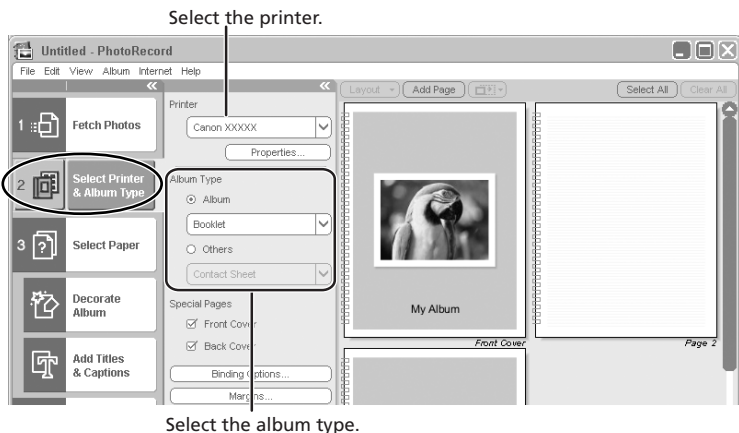
- PhotoRecord starts.
- Place a check mark beside the items you wish include in the print.
- If you wish to add a comment, select a still image and enter a comment in the [Properties] window by clicking  (Properties).





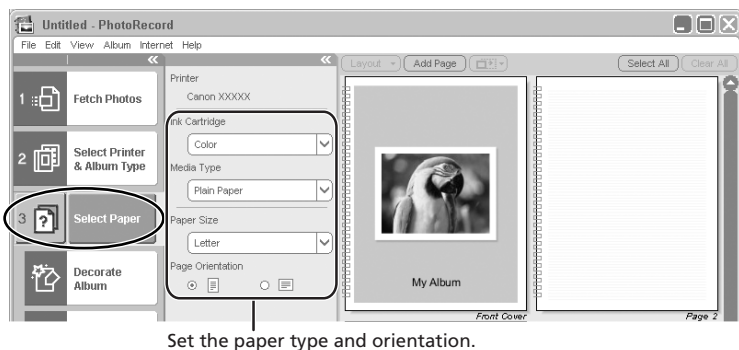
**5. Click [Select Printer & Album Type] and select a printer and album type.**

E



**6. Click [Select Paper] and select the media type, paper size and page orientation.**

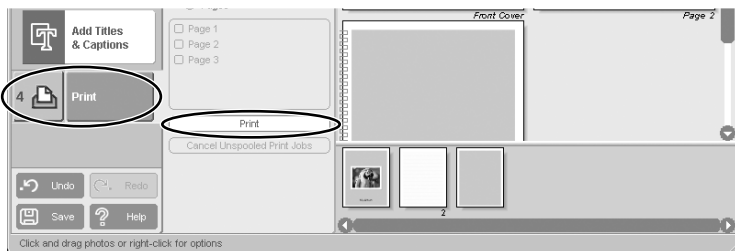
- If you click [Decorate Album], you can change the theme (a consistent design for background, photo frames and text frames), or set the design elements individually. When you set the design elements individually, make sure to select the target page.
- If you click [Add Titles & Captions], you can add titles and text, and change font, font size, justification and color. Make sure to select the target page when performing these changes.



## Printing Still Images (PhotoRecord)


- Click [Print], confirm the number of copies and other print settings, and click [Print].

Printing starts.



PhotoRecord automatically performs image correction for images shot with Exif 2.2 compatible camcorders and even other images, yielding high-quality prints.

## Selecting the Print Mode and Number of Copies (DPOF Print Settings)

You can select the image and the number of prints (  print setting) for automatic printing on a DPOF\*-compliant printer. You can set the DPOF print settings also on the camcorder.

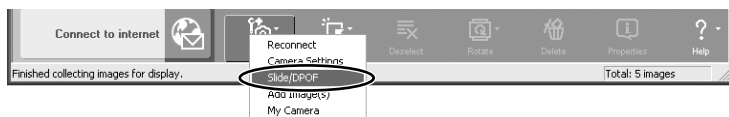
\* Digital Print Order Format



When you are using a SD memory card, make sure the protect switch is set to allow recording.

- Click [Set] in the Camera Window and select [Slide/DPOF] in the displayed menu.

The Edit Slide/DPOF window appears.



## 2. Select the still image you wish to print and the number of copies.

- [Standard Print]: Prints selected images in the specified number of copies. Use the arrows next to the boxes below the image to select the number of copies.
- [Index Print] and the option [Titles] of the [Edit] menu (printing of date and file number) are not supported by the camcorder.



## 3. Click [Save to Camera].

The DPOF print settings will be saved to the memory card.



The Edit Slide/DPOF window allows print settings on up to 998 still images. With some camcorders, DPOF print settings are limited to a maximum of 200 still images. In that case, all DPOF print settings on the 201st still image and onward will be erased.

## Merging Panoramic Images (PhotoStitch)

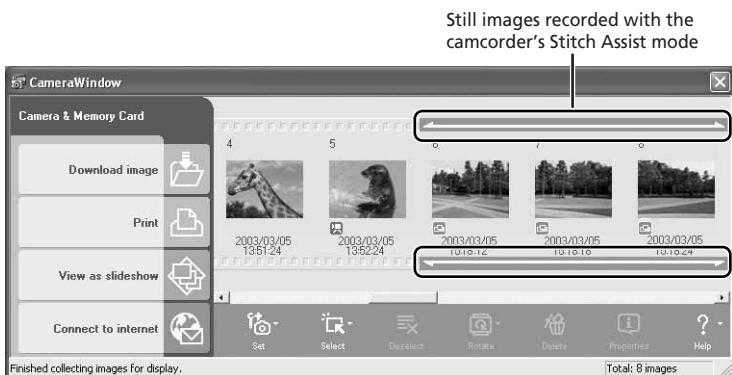
You can merge a series of overlapping still images into a single, seamless panorama. PhotoStitch automatically arranges still images recorded with the camcorder's Stitch Assist mode in their correct order and orientation, making it easy to merge them. Please refer to the Camcorder Instruction Manual to learn how to record in Stitch Assist mode.

The following instruction explains how to merge still images recorded in Stitch Assist mode with the camcorder.



Still images recorded in Stitch Assist mode with Wide-converter or Tele-converter attached cannot be merged correctly.

### 1. Click the arrow in the Camera Window.



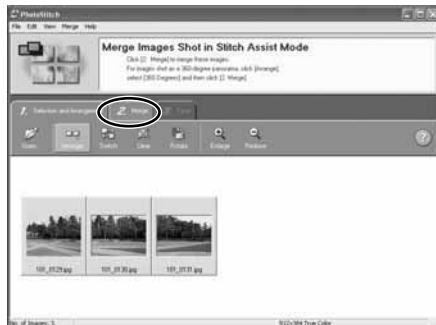
### 2. In the confirmation window, click [OK].

PhotoStitch starts.



### 3. Arrange the order of the images and click [2.Merge].

Operational instructions are displayed in the upper section of the window.



### 4. Click [Start].



E

Windows

## Merging Panoramic Images (PhotoStitch)

### 5. Select [3. Save] and then click [Save].

- Select the destination folder, input the file name and click [Save].
- In the View the Saved Image? window, click [Yes]. The Viewer window opens and displays the merged image.

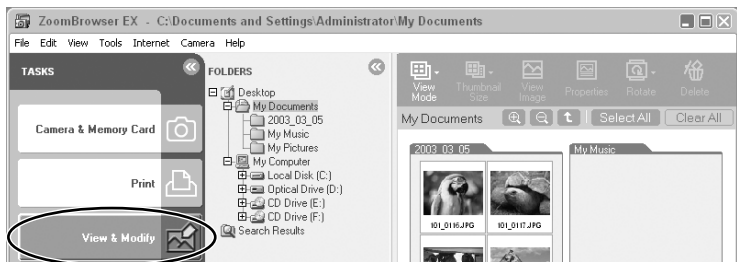


- You can record the surroundings in 360 degrees, and stitch them together later to form a 360-degrees cylinder. (In [1. Selection and Arrangement], select [Arrange] and [360 degrees].) By saving this stitched image in QuickTime VR format, you can then get a virtual view of the surroundings by manipulating the mouse. For this, you need to have QuickTime installed on your computer. If it is not already installed, install it from the DIGITAL VIDEO SOLUTION DISK For Windows. Place the disk in the CD-ROM drive and click [QuickTime Installation] in the installer panel.
- Please refer to the PhotoStitch Help menu for more details.

## Exporting Images

You can change the size, resolution or file format of selected still images and save them as new files, or export still images for use as screen saver or wallpaper. You can also export selected movie and still image information to text file, or copy and rename movies and still images.

### 1. Click [View & Modify] in the Main Window.



### 2. Click [Export Images].



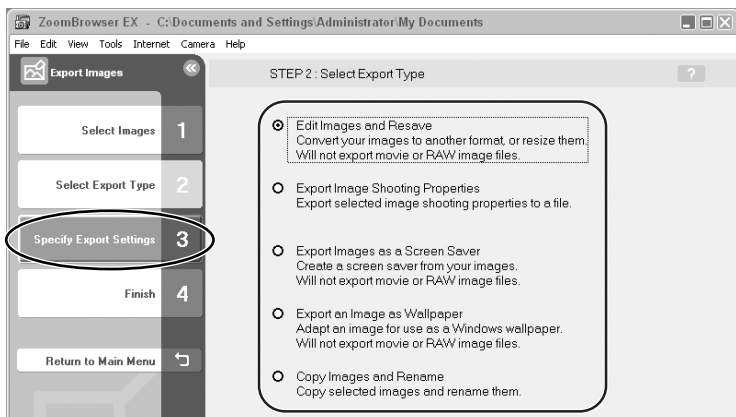
### 3. Select the images and click [Select Export Type].

You can select multiple images or a folder to include all images in that folder. (Select only one image if you wish to set it as wallpaper.)



### 4. Select the export type and click [Specify Export Settings].

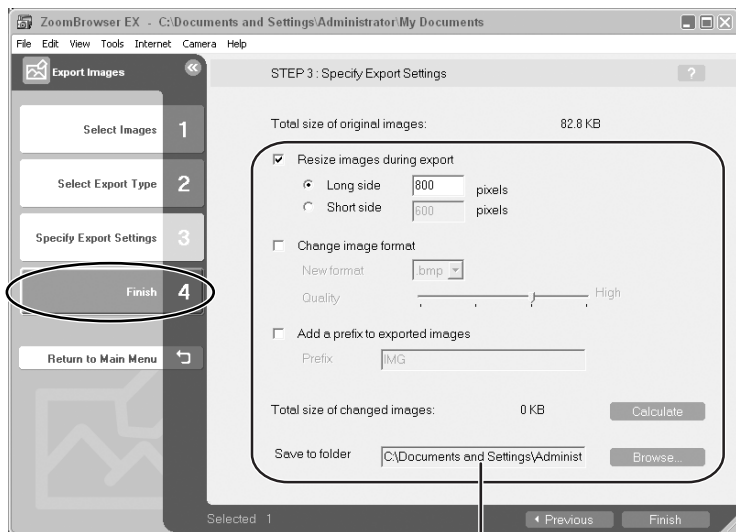
- [Edit Images and Resave]: Converts still images to another file format, resizes and saves them as new files. You can select the file format from JPEG, TIFF, and BMP. You can also specify a prefix to be added to the exported still images.
- [Export Image Shooting Properties]: Exports selected image information to a text file.
- [Export Images as a Screen Saver]: Saves still images as a Screen Saver.
- [Export an Image as Wallpaper]: Saves still images as Windows wallpaper.
- [Copy Images and Rename]: Copies and names the selected images. You can also specify a prefix to be added to the exported images.





## 5. Specify the export settings and click [Finish].

- The options for the export settings vary according to the export type. Follow the instructions displayed in the window.
- In each case, specify the destination folder and file name for the images to be exported.



Destination Folder



Image information will be saved along with the images when you select [Edit Images and Resave] and save images in JPEG format, or when you select [Copy Images and Rename].

# Adding Still Images from Your Computer to the Memory Card

You can add still images (JPEG) from the computer to a memory card. You can also add sample images for card mix from the DIGITAL VIDEO SOLUTION DISK For Windows.

## Adding Still Images to the Memory Card

### 1. Click [Camera & Memory Card] in the Main Window.



### 2. Click [Upload Images].

If you have already selected an image, move on to the step 4.



### 3. Select the still images you wish to add and click [Open Camera Window].

You can select multiple still images by continuously clicking on the still images. Click on the still image again to deselect.



### 4. In the Add Image window, select the image size and click [Add].

- The selected still images will be recorded to the memory card.
- When recording is complete, the still images will appear in the Camera Window.



## Adding Still Images from Your Computer to the Memory Card

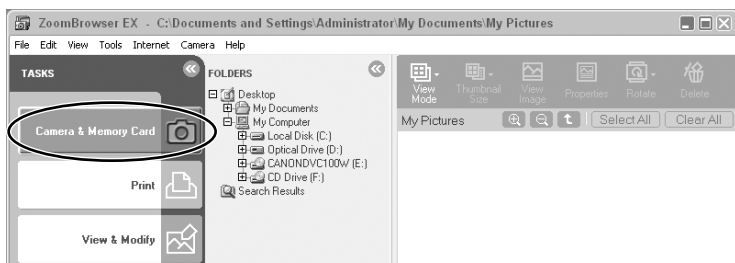
### Adding Sample Images to the Memory Card

You can add sample images for card mix and card animation to the memory card. 4 images for CARD CHROMA, 2 images for CARD LUMINANCE, 2 images for CAMERA CHROMA and 4 images for CARD ANIMATION are provided on the DIGITAL VIDEO SOLUTION DISK For Windows.

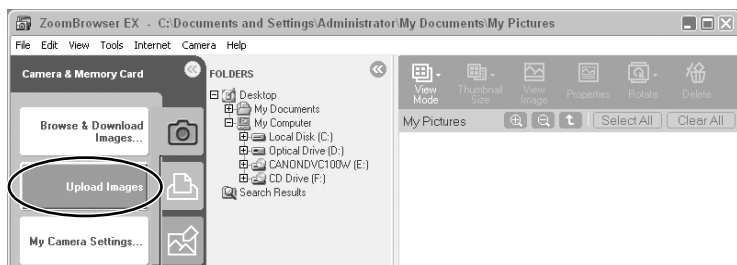
#### 1. Insert the DIGITAL VIDEO SOLUTION DISK For Windows to the computer's CD-ROM drive.

If the installer panel appears, click [Exit] to close it.

#### 2. Click [Camera & Memory Card].



#### 3. Click [Upload Images].



#### 4. In the Folders Area of the Main Window, select the CD-ROM icon followed by [DVC CARD IMAGE].

Sample images or folders for CARD CHROMA, CARD LUMINANCE, CAMERA CHROMA or CARD ANIMATION appear in the Browser Area.



#### 5. Select the sample images you wish to add and click [Open Camera Window].

You can select multiple images by continuously clicking on the images. Click on the image again to deselect.



## Adding Still Images from Your Computer to the Memory Card


### 6. In the Add Image window, click [Add].

- The selected images will be recorded to the memory card.
- When recording is complete, the sample images will appear in the Camera Window.

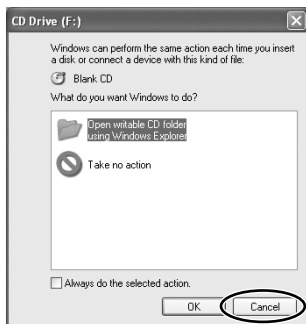


## Saving Images on CD-R/RW Disks (Windows XP Only)

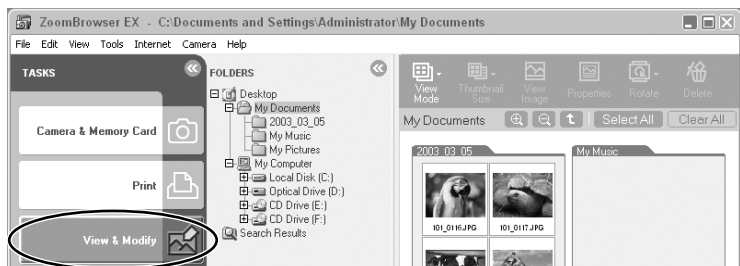
You can copy and save images to CD-R and CD-RW disks. The shooting information is copied along with the images.

 This function can only be used on a computer that came with a CD-R/RW drive as standard equipment.

1. Place a CD-R/RW disk in the computer's CD-ROM drive.
2. If the following window appears, click [Cancel].

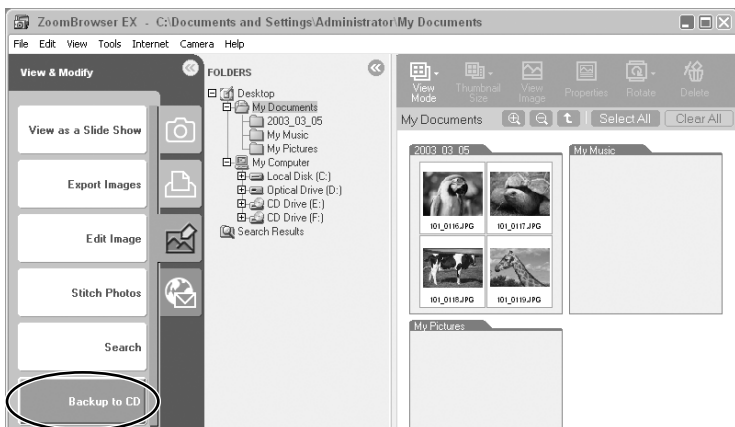


3. Click [View & Modify] in the Main Window.



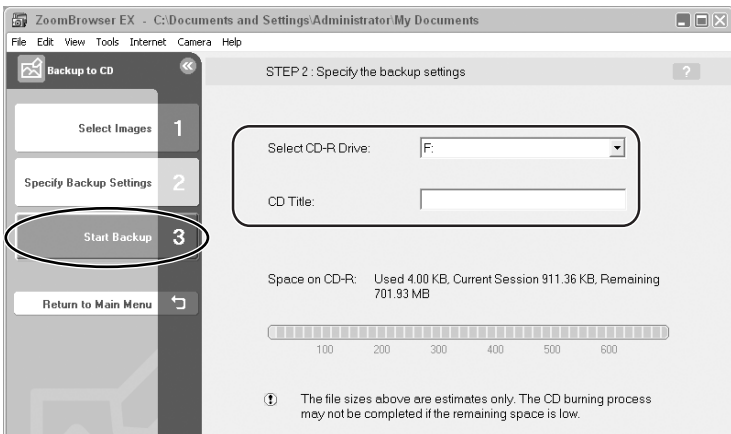
## Saving Images on CD-R/RW Disks (Windows XP Only)

### 4. Click [Backup to CD].



### 5. Select the folders or images you wish to save and click [Specify Backup Settings].

### 6. Select the CD-R/RW drive, enter a title and click [Start Backup].



The disk will be ejected from the drive when copying is complete.



You can add images to a CD-R/RW disk that already contains images.



## Customizing Your Camcorder with the My Camera Settings

The start-up image, start-up sound, shutter sound, operation sound and self-timer sound are called the My Camera Settings.

ZoomBrowser EX already contains several My Camera Settings which can be selected in theme sets or individually. The “Animal” theme, for example features and animal in the start-up image and animal calls in each of the sound files. The files all begin with the same word (e.g. “Animal”, “Baseball”).

You can use the pre-recorded My Camera Settings, add still images to the My Camera Window (□ 68) or create original sounds files (□ 69).



Observe following precautions while the My Camera Settings are saved to the camcorder.

- Do not open the memory card cover or remove the memory card.
- Do not detach the USB cable.
- Do not turn off the camcorder or computer.
- Do not change the position of the POWER switch or TAPE/CARD switch

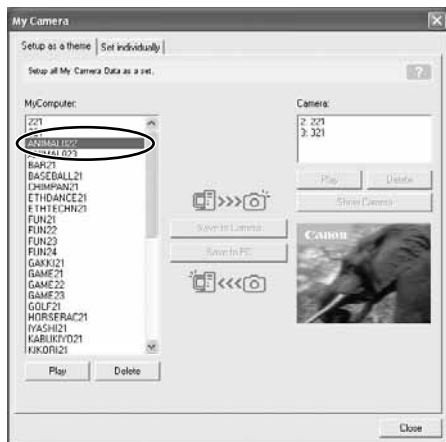
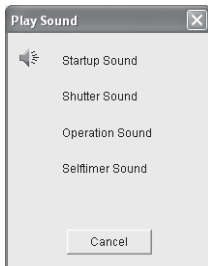
## Saving the My Camera Settings to the Camcorder

### 1. In the Main Window, click [Camera & Memory Card] followed by [My Camera Settings].

The My Camera Window (□ 67) appears.

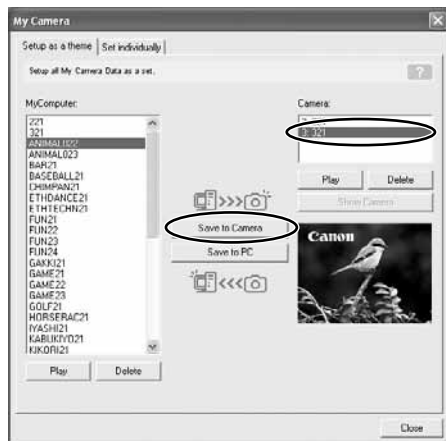
### 2. In the My Camera window, select the theme set you wish to save to the camcorder in the [My Computer] list.

- To change the settings individually, select the [Set individually] tab and select the setting type in the [Data Type] list.
- A window appears when you select a theme set and plays back the start-up, shutter, operation and self-timer sound.



## Customizing Your Camcorder with the My Camera Settings

3. Select the setting you wish to replace in the [Camera] list and click [Save to Camera].



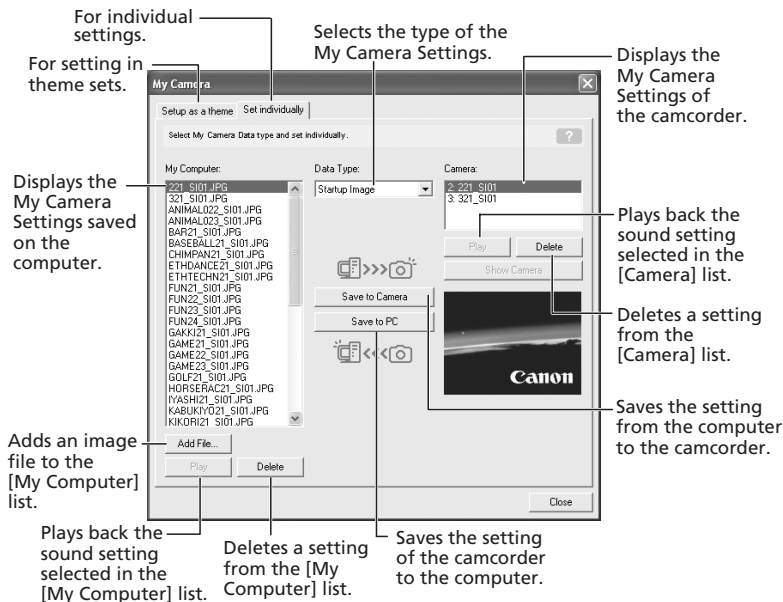
4. On the confirmation window, click [OK].

- The selected setting replaces the old setting and appears in the [Camera] list.
- If you wish to use this setting on the camcorder, change the My Camera Setting on the camcorder itself. Refer to the Camcorder Instruction Manual for details.



Alternatively, you can display the My Camera window from the Camera Window by clicking [Set] and selecting [My Camera] from the displayed menu.

## My Camera Window



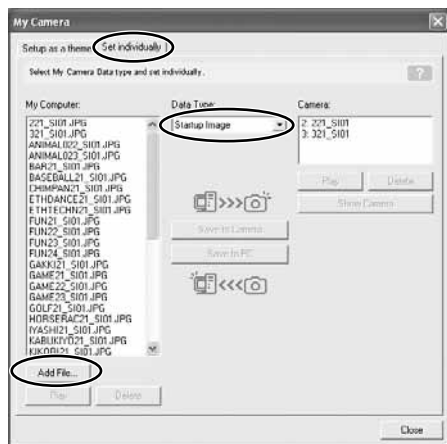
### Adding Still Images to the My Camera Window



To use still images recorded with your camcorder, you need to download them to the computer before you can add them to the My Camera Window.

1. In the My Camera window, click the [Set individually] tab, select [Startup Image] in the [Data Type] list and click [Add File].

The file opening window appears.



2. Select the still image file (JPEG) you wish to add and click [Open].

The selected file appears in the [My Computer] list. You can now save the newly added file to the camcorder using the procedures described in *Saving the My Camera Settings to the Camcorder* (65).



To delete a setting, select the file and click the [Delete] button below the [My Computer] list.

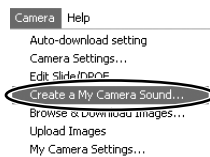
## Creating an Original Sound File and Adding it to the My Camera Window



- QuickTime is required to play back the sound. If QuickTime is not already installed on your computer, install the QuickTime from the DIGITAL VIDEO SOLUTION DISK for Windows. Place the disk in the CD-ROM drive and click [QuickTime Installation] in the installer panel.
- You need to connect a microphone to the computer.

### 1. In the Main Window, select [Create a My Camera Sound] from the [Camera] menu.

The My Camera Sound Maker window appears.



### 2. Click the tab of the sound type you wish to create and click [Record].



### 3. To begin recording, click the [Start] button.



## Customizing Your Camcorder with the My Camera Settings

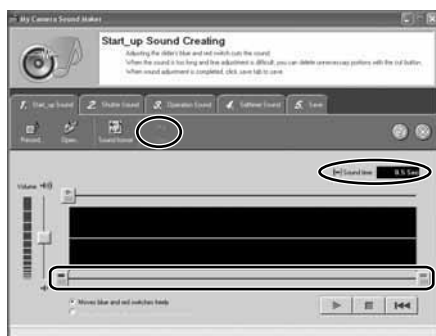
### 4. Click the [Stop] button to stop recording, and click [Close].

Recording stops automatically after 30 seconds.



### 5. Edit the sound data so that it confirms to the time limits.

- Select the sound type by clicking the [Sound Format] button.
- Adjust the length of the recording to conform with the time limits by moving the blue and red switches and clicking the [Cut] button.



- The following chart shows standard time lengths for My Camera sounds.

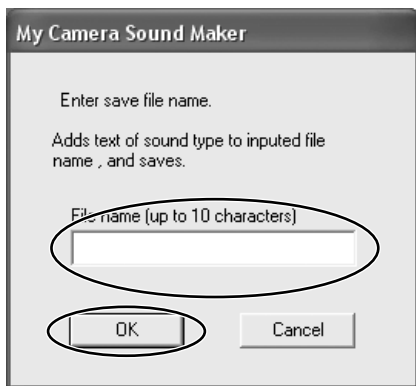
Sound Type	Lengths in Seconds	
	11.025 kHz	8.000 kHz
Start-up Sound	1.0 sec. or less	1.3 sec. or less
Shutter Sound	0.3 sec. or less	0.4 sec. or less
Operation Sound	0.3 sec. or less	0.4 sec. or less
Self-Timer Sound	2.0 sec. or less	2.0 sec. or less

6. Click the [Save] tab, check if the sound file was created and click [Save].



7. Input a file name and click [OK].

- The created sound file appears in the [My Computer] list.
- You can now save the newly created sound file to the camcorder using the procedures described in *Saving the My Camera Settings to the Camcorder* (p. 65).



8. Click  to close the My Camera Sound Maker window.

## Setting ZoomBrowser EX to Start Automatically

You can set ZoomBrowser EX to start automatically when you connect the camcorder to the computer.

### Windows 98/Windows 2000

- 1. Insert a memory card containing images into the camcorder.**
- 2. Connect the Power Adapter to the camcorder.**
- 3. Turn the POWER switch to PLAY (VCR) and move the TAPE/CARD switch to CARD.**

Wait until the card access indicator stops flashing.

- 4. Connect the camcorder to the computer using the supplied USB cable (📖 19).**

When a window appears allowing you to select an application program to start, click [Cancel].

- 5. Click the Windows [Start] menu and select [Settings] and [Control Panel].**

- 6. Double click the [Scanners and Cameras] icon.**

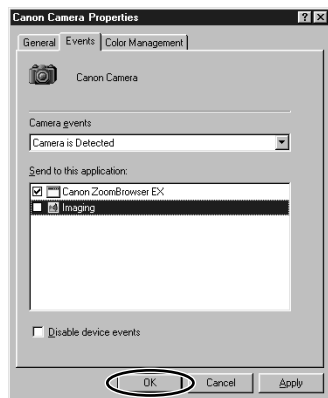
If you cannot find the [Scanners and Cameras] icon, see *TWAIN Driver/WIA Driver Uninstallation* (📖 82).

- 7. Make sure that [Canon Camera] is selected and click [Properties].**
- 8. Click the [Events] tab.**



## 9. Remove the check mark from all programs except ZoomBrowser EX and click [OK].

The next time the camcorder is connected, ZoomBrowser EX starts and the Camera Window opens automatically.



### Windows Me

1. Insert a memory card containing images into the camcorder.
2. Connect the Power Adapter to the camcorder.
3. Turn the POWER switch to PLAY (VCR) and move the TAPE/CARD switch to CARD.  
Wait until the card access indicator stops flashing.
4. Connect the camcorder to the computer using the supplied USB cable ( 19).  
When the Scanners and Cameras Wizard opens, click [Cancel].
5. Click the Windows [Start] menu and select [Settings] and [Control Panel].
6. Double click the [Scanners and Cameras] icon.

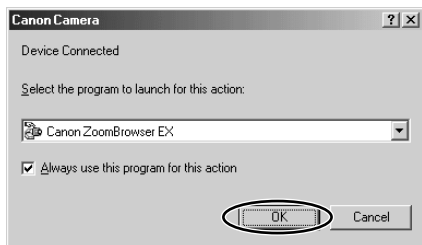
If you cannot find the [Scanners and Cameras] icon, see *TWAIN Driver/WIA Driver Uninstallation* ( 82).

## Setting ZoomBrowser EX to Start Automatically

7. Double click the [Canon Camera] icon.
8. Click the [Events] tab.
9. In the [Actions] section, select [Start this program], set it to [Canon ZoomBrowser EX] and click [OK].



- When you have restarted your computer, a window appears allowing you to select an application program to start.
- Select [Canon ZoomBrowser EX], place a check mark beside “Always use this program for this action” and click [OK].
  - ZoomBrowser EX starts and the Camera Window opens automatically.
  - The next time the camcorder is connected, ZoomBrowser EX starts and the Camera Window opens automatically.



1. Insert a memory card containing images into the camcorder.
2. Connect the Power Adapter to the camcorder.
3. Turn the POWER switch to PLAY (VCR) and move the TAPE/CARD switch to CARD.

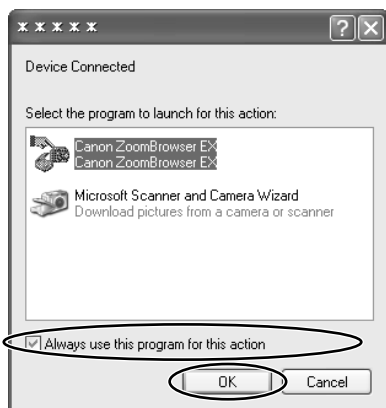
Wait until the card access indicator stops flashing.

4. Connect the camcorder to the computer using the supplied USB cable (19).

A window appears allowing you to select an application program to start.

5. Select [Canon ZoomBrowser EX], place a check mark next to "Always use this program for this action" and click [OK].

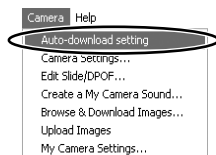
The next time the camcorder is connected, ZoomBrowser EX starts and the Camera Window opens automatically.



## Auto-Downloading Settings

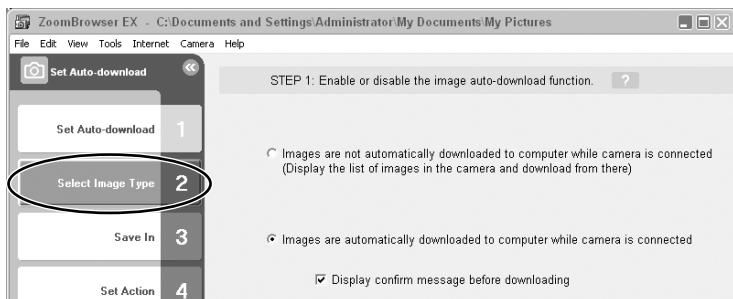
You can set the action that is carried out when ZoomBrowser EX is started. When you set ZoomBrowser EX to automatically download images from the camcorder when ZoomBrowser EX is started, specify the download settings.

### 1. In the Main Window, select [Auto-download setting] from the [Camera] menu.

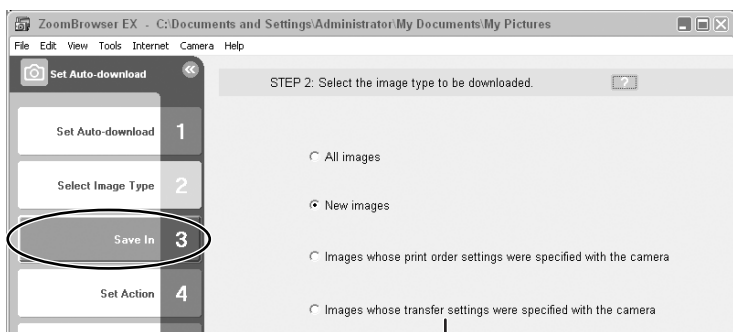


### 2. Enable or disable the auto-download setting and click [Select Image Type].

- When you selected [Images are not automatically downloaded....], click [Setup Completed]. The setup process is complete.
- When you selected [Images are automatically downloaded....], click [Select Image Type] and move on to the steps 3 to 5.

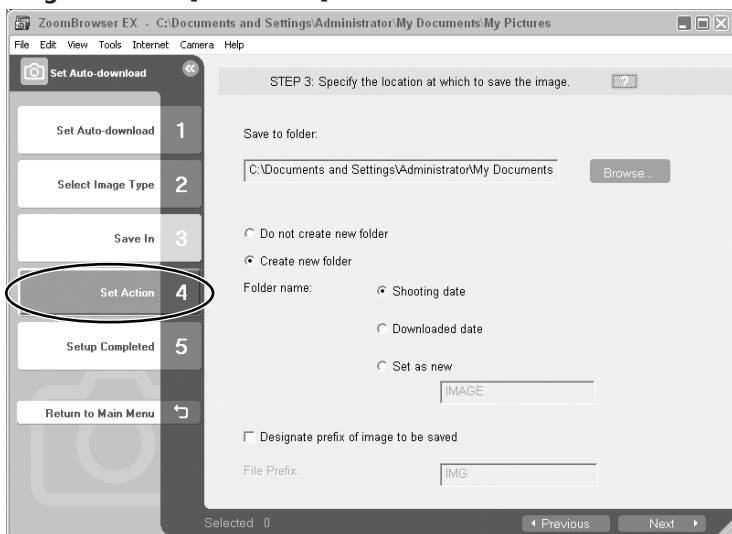


### 3. Select the image type to be downloaded and click [Save In].



This option is not supported by the camcorder.

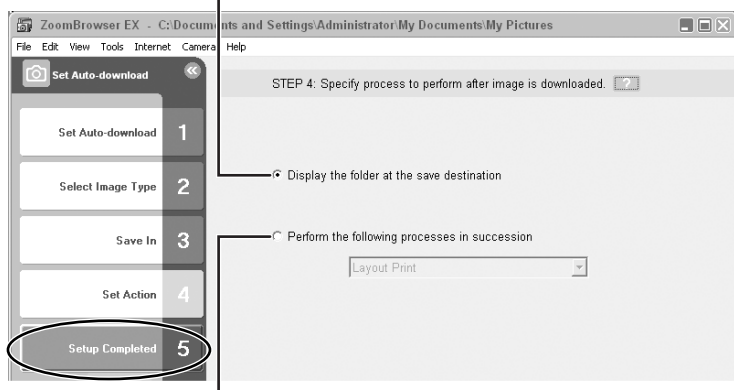
### 4. Select the destination folder in which you wish to save the image and click [Set Action].



## Auto-Downloading Settings

### 5 Set the action to be carried out after images are downloaded and click [Setup Completed].

Allows you to display the folder in which the images have been saved after downloading them.



Allows you to perform one of the following processes in succession.

- Layout Print
- Contact Sheet Print
- View as slideshow
- Send by e-mail

## Uninstalling the Software

Uninstall the software when you wish to delete it from your computer or when reinstallation is required to fix corrupted files.



Users of Windows 2000 and Windows XP must first log in as an Administrator to uninstall the driver and other programs.

E

## Uninstalling ZoomBrowser EX

### 1. Click the Windows [Start] menu and select [All Programs], [Canon Utilities], [ZoomBrowser EX] and [ZoomBrowser EX Uninstall].

The uninstall utility starts and removes ZoomBrowser EX.



- Uninstall also the Camera Window when you have uninstalled ZoomBrowser EX.

Click the Windows [Start] menu and select [All Programs], [Canon Utilities], [Camera Window] and [Camera Window Uninstall].

- PhotoRecord and PhotoStitch can be removed with the same procedure.
- RemoteCapture Task and RAW Image Task are used with Canon digital cameras. The camcorder does not support these programs.

## Uninstalling the Software

### Uninstalling the TWAIN Driver/WIA Driver

---

Users of Windows XP do not need to uninstall the driver.

**1. Connect the camcorder to the computer using the supplied USB cable (📖 19).**

A window for selecting an application program or the Scanners and Cameras Wizard appears, or ZoomBrowser EX starts.

**2. If the window for selecting an application program or the Scanners and Cameras Wizard appeared, click [Cancel]. If ZoomBrowser EX started, close it.**

**3. Click the Windows [Start] menu and select [Settings] and [Control Panel].**

**4. Double-click the [Scanners and Cameras] icon.**

If you cannot find the [Scanners and Cameras] icon, see *TWAIN Driver/WIA Driver Uninstallation* (📖 82).

**5. Windows 98/Windows 2000:**

1. Delete [Canon Camera] from the [Scanners and Cameras Properties] list.
2. Click [OK] to close the window.
3. Click the Windows [Start] menu and select [Programs], [Canon Utilities], [DV TWAIN Driver x.x] and [TWAIN Driver Uninstall].

A version number appears in place of "x.x".

**Windows Me:**

1. Delete the camcorder icon from the [Scanners and Cameras] folder.
2. Click [OK] to close the window.
3. Click the Windows [Start] menu and select [Programs], [Canon Utilities], [DV WIA Driver x.x] and [WIA Driver Uninstall].

A version number appears in place of "x.x".

**6. When the Confirm Uninstall window appears, click [OK].**

The uninstall process starts.

**7. When the Maintenance Complete window appears, click [Finish].**



## Connection

### **❑ Camcorder is not recognized when connected to the computer.**

#### **→ Computer does not support the USB interface.**

The USB interface is not supported for computer not in compliance with the following requirements. Acquire the necessary system to use the USB interface.

Requirements: Built-in USB port on a system pre-installed with Windows XP, Windows 2000, Windows Me, Windows 98 (First or Second Edition).

#### **→ There is no memory card in the camcorder.**

Insert a memory card into the camcorder.

#### **→ The camcorder is not set to the correct mode.**

Turn the POWER switch to PLAY (VCR) and move the TAPE/CARD switch to CARD.

#### **→ Camcorder is not correctly connected to the computer.**

Read *Connecting the Camcorder to a Computer* (□ 19) and check the connection.

Ensure that you are using the correct cable and that its connectors are in good shape.

#### **→ If you are experiencing operational problems, detach the USB cable from the camcorder and computer and terminate the connection. Restart the computer and then reconnect the camcorder.**

#### **→ TWAIN Driver or WIA Driver is not installed properly.**

First uninstall the TWAIN/WIA Driver, then reinstall the driver from the DIGITAL VIDEO SOLUTION DISK For Windows (remove the check marks from the other programs when prompted to select the programs to be installed).

For uninstalling, refer to *Uninstalling the TWAIN Driver/WIA Driver* (□ 80).

For installing, refer to *Installing the TWAIN Driver/WIA Driver* (□ 17).

## ZoomBrowser EX Operation

### **❑ Cannot download images**

#### **→ The camcorder is not set to the correct mode.**

Turn the POWER switch to PLAY (VCR) and move the TAPE/CARD switch to CARD.

## Troubleshooting

### Image files or folders do not appear in ZoomBrowser EX.

- Images of folders shown in ZoomBrowser EX and the actual file contents may be different when an image file has been moved or copied using Windows functions or edited with a separate program. Click the [View] menu and select [Refresh Current Folder].

## Driver Installation

---

### Cannot install the TWAIN Driver/WIA Driver correctly.

- Does the system have a built-in USB port and did it come with Windows 98 (First or Second Edition), Windows Me or Windows 2000 preinstalled?
- Camcorder is not correctly connected to the computer.  
Read *Connecting the Camcorder to a Computer* (pg 19) and check the connection.  
Ensure that you are using the correct cable and that its connectors are in good shape.
- Are you using the power adapter to power the camcorder?
- If the problem is not mentioned above, the TWAIN Driver/WIA Driver may not have been recognized by Windows.  
Uninstall (pg 80) and reinstall (pg 17) the driver.

## TWAIN Driver/WIA Driver Uninstallation

---

If you had problems uninstalling the driver, use the following procedures to remove it.



The [Inf] folder contains numerous files that are critical to the computer's operation. Be extremely careful not to delete the wrong files. If you delete the wrong file, you may be unable to restart Windows.



Use the procedures below for the following circumstances too.

- If you do not find [Scanners and Cameras] in the [Control Panel] or [Printers and Other Hardware].
- If [Canon Camera] or your camcorder model name does not appear in the [Scanners and Cameras Properties] or [Scanners and Cameras].
- If you connected the camcorder to the computer via the USB cable before installing the Digital Video Software.

Leave the camcorder connected to the computer.

- 1. Click the Windows [Start] menu and select [Settings] and [Control Panel].**
- 2. Double-click the [System] icon.**

The [System Properties] dialog appears.
- 3. Click the [Device Manager] tab.**
- 4. If [Canon Camera] appears under the [Other Devices] and/[Imaging Devices] categories, use the following procedures to delete it.**
  1. Select [Canon Camera] and click [Remove].
  2. In the confirmation dialog, click [OK].
  3. Click [OK] to close the [System Properties] dialog.
- 5. Double-click the [My Computer] icon on the desktop followed by the [C:] drive and the [Windows] and [Inf] folders.**

If the [Inf] Folder Is Not Visible in the [Windows] Folder

  1. Windows 98: Click the [View] menu and select [Folder Options].  
Windows Me: Click the [Tools] menu and select [Folder Options].
  2. Click the [View] tab.
  3. Windows 98: Set the [Hidden files] section to [Show all files].  
Windows Me: Set the [Hidden files and folders] section to [Show hidden files and folders].
  4. Click [OK].  
This makes the [Inf] folder and files in the [Inf] folder visible.
- 6. Find and delete the [Drvdata.bin] and [Drvidx.bin] files.**
- 7. In the [Inf] folder, double-click [Other] folder to open it.**
- 8. Find and delete the [Canon.Inc CAP015NA.inf] or [Canon.Inc CAP015NB.inf] file.**

If the above file is not contained in the [Other] folder, you do not need to delete anything.

## Troubleshooting

### Windows 2000

Leave the camcorder connected to the computer.

- 1. Click the Windows [Start] menu and select [Settings] and [Control Panel].**
- 2. Double-click the [System] icon.**
- 3. Click the [Hardware] tab.**
- 4. Click the [Device Manager] button.**
- 5. If [Canon Camera] or your camcorder model name appears under the [Other Devices] and/or [Imaging Devices] categories, use the following procedures to delete it.**
  1. Select [Canon Camera] or the name of the camcorder model, right-click the mouse button and select [Delete].
  2. In the confirmation dialog, click [OK].
  3. Click [OK] to close the [System Properties] dialog.  
Remove all copies of [Canon Camera] or your camcorder model name that appear in the [Other Devices] or [Imaging Devices] categories, or that appear more than once in one category.
- 6. Double-click the [My Computer] icon on the desktop, followed by the [C:] drive, and the [Winnt] and [Inf] folders.**

If the [Inf] Folder Is Not Visible in the [Winnt] Folder  
Use the following procedures to show all files and folders.

  1. Click the [Tools] menu and select [Folder Options].
  2. Click the [View] tab.
  3. In the [Advanced setting] section, set the [Hidden files and folders] category to the [Show hidden files and folders] option.  
If [Hide extensions for known file types] is selected, remove its check mark.
  4. Click [OK] to close the dialog.  
This makes the [Inf] folder and the files in the [Inf] folders visible.

## 7. Look for the file starting with [Oem\*].

- A number such as "0" or "1" will appear in place of the asterisk (\*) above. You will also find another file called [Oem\*.pnf], which will have the same number as the [Oem\*] file. The two constitute one set.
- There may be many file sets starting with "Oem".
- If you double-click the [Oem\*] file, the Windows Notepad program will start and show the file contents. Click each [Oem\*] file until you find one that contains "\*\*\* Canon Camera Driver Setup File\*\*\*" in its first line. When you find the correct file, note down its name and close the Notepad window.

## 8. Delete the [Oem\*] file set.

Delete all [Oem\*] and [Oem\*.pnf] files, taking great care to delete the correct files.

## If You Were Using ZoomBrowser EX Version 2 or 3 (This manual explains version 4)

### 2 Titles and comments added using a prior version than ZoomBrowser EX version 4 do not appear in ZoomBrowser EX 4 or higher.

#### → Titles and comments added using a prior version of ZoomBrowser EX will not be displayed. Use the following procedure to display them.

1. In Windows Explorer, open the [Program] folder under the folder in which you installed ZoomBrowser EX 4 or higher (C:\Program Files\Canon\ZoomBrowser EX\Program).
2. Double-click [dbcobverter.exe].
3. Select the database you were using until now (C:\Program Files\Canon\ZoomBrowser EX\Program) and click the [Start] button.  
Please note that with ZoomBrowser EX 4 or higher, both titles and comments appear in the comment list.

### 2 Cannot find the image folders saved with a prior version than ZoomBrowser EX 4.

#### → Image folders saved under the [Program Files] folder (such as [Image Library One]) cannot be displayed in the Main Window's Folder Area of ZoomBrowser EX 4 or higher. Use the following procedure to display them.

1. In Windows Explorer, open the [Program Files] folder under the folder in which you installed ZoomBrowser EX 4 or higher (C:\Program Files\Canon\ZoomBrowser EX\Program\Image Library One).
2. Select the image folder you wish to display and copy the folder to a different destination.

## Macintosh System Requirements

<b>OS:</b>	Mac OS 9.0-9.2, Mac OS X (version 10.1/10.2)
<b>Computer Model:</b>	Computers that come with above OS preinstalled and have built-in USB ports.
<b>CPU:</b>	PowerPC
<b>RAM:</b>	Mac OS 9.0-9.2: 64 MB or more of application memory Mac OS X (version 10.1/10.2): 128 MB or more
<b>Interface:</b>	USB
<b>Free Hard Disk Space:</b>	Canon Utilities – ImageBrowser 120 MB or more – PhotoStitch 30 MB or more
<b>Display:</b>	800 × 600 pixels/32,000 colors or better, 1,024 × 768 pixels/32,000 colors or better is recommended



- Proper operation is not guaranteed on a user-built PC.
- Proper operation is not guaranteed on any particular system, even if it meets the requirements outlined above.
- ImageBrowser and PhotoStitch do not operate on disks formatted with the Unix File System (UFS).
- A CD-ROM drive is required to install the software.
- Connect the USB cable directly to one of the computer's main USB ports. The interface may not function correctly if the camcorder is connected via a USB hub.
- The connection may not operate correctly if you are using other USB devices, excluding USB mice or keyboards, at the same time. If this occurs, disconnect the other devices from the computer and try reconnecting the camcorder.
- Do not connect two or more camcorders to the same computer via the USB interface. The connections may not operate correctly.
- Not all operations performed with a connection to a USB 2.0 compatible board can be guaranteed.

## What Can Be Accomplished with the Software

This topic introduces the main features of the software programs contained on the DIGITAL VIDEO SOLUTION DISK For Macintosh.

E

### ■ ImageBrowser (📖 92)

- Downloading images recorded onto a memory card to your computer.
- Categorizing and organizing large volumes of images.
- Creating mail attachments from images.
- Adding a title and a comment, and printing still images.
- Printing indexes.

### ■ PhotoStitch (📖 119)

Merging panoramic images.

## Installing the Software



Before you connect the camcorder to the computer with the USB cable for the first time, you must install the Digital Video Software.



### **Mac OS X (version 10.1/10.2) Users:**

Your digital video camcorder is equipped with the standard Picture Transfer Protocol (PTP). This protocol enables you to download images by simply connecting the camera to a computer with the USB cable (using software such as iPhoto or Image Capture preinstalled on Mac OS X). However, please note that there are several limitations to downloading images with this method. To avoid these problems, install ImageBrowser to download images.

- It may take a few minutes, after connecting the camcorder, until you can download images.
- Only AVI\* movie files can be downloaded. Thumbnails cannot be downloaded.
  - \* Two files are created in the camcorder (for example: [MVI\_0001.AVI] and [MVI\_0001.THM]). [MVI\_0001.THM] files cannot be downloaded but movies can still be played back on the computer.
- Mac OS X version 10.2
  - You may not be able to download images with iPhoto if the memory card contains an enormous volume of images (approx. 900 or more).
  - The Exif\* version may change to 2.1 and image information may be modified when downloading images with Image Capture. To download images without any information changes, use the following procedures:
    1. Connect the camcorder to the computer and prepare it to transfer data.
    2. Start Image Capture.
    3. In the screen that appears, click [Options].
    4. Remove the checkmark from [Embed Colorsync profile] in the [Download Options] tab and click [OK].
  - \* Images shot with camcorders complying with Exif Print incorporate shooting settings information, such as the shooting conditions and program AE mode, along with the image data.

- 1. Close any programs that are running.**
- 2. Set the DIGITAL VIDEO SOLUTION DISK For Macintosh in the computer's CD-ROM drive.**



- 3. Mac OS 9.0-9.2:** Double click the CD-ROM icon, followed by the [Mac OS 9] and [Canon Digital Video Installer] icons.
- Mac OS X (version 10.1/10.2):** Double click the CD-ROM icon, followed by the [Mac OS X] and [Canon Digital Video Installer] icons.

The installer panel appears.

- 4. Select your language.**
- 5. Click [Digital Video Software Installation].**

Installer Panel



- 6. Select the programs you wish to install and click [Install].**

Confirm that there is a check mark beside the name of the program you wish to install.



- 7. Select your country/region and click [Next].**
- 8. Read the license agreement and click [Agree].**

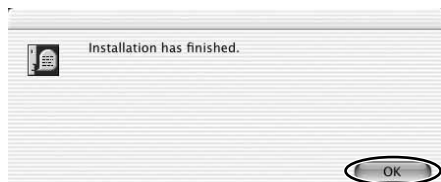
## Installing the Software

### 9. Select the installation destination and click [Choose].

Installation starts.



### 10. When the message "Installation has finished." appears, click [OK].



### 11. After the installation is complete, restart the computer as prompted.

## Connecting the Camcorder to a Computer

E



- Make sure the camcorder is being powered using the power adapter before connecting it to a computer.
- Be sure to install the Digital Video Software before you connect the camcorder to the computer.
- Connect the USB cable directly to one of the computer's main USB ports. The interface may not function correctly if the camcorder is connected via a USB hub.
- The connection may not operate correctly if you are using other USB devices, excluding USB mice or keyboards, at the same time. If this occurs, disconnect the other devices from the computer and try reconnecting the camcorder.
- Do not connect two or more camcorders to the same computer via the USB interface. The connections may not operate correctly.
- **Never allow the computer to go into standby (sleep) mode while a camcorder is connected via the USB interface. If it does happen, never disconnect the USB cable. Try to awaken the computer with the camcorder in the connected state. Some computers will not awaken properly if you disconnect the camcorder while they are in standby mode. Please refer to your computer manual for instructions regarding its standby mode.**

**1. Insert a memory card containing images into the camcorder.**

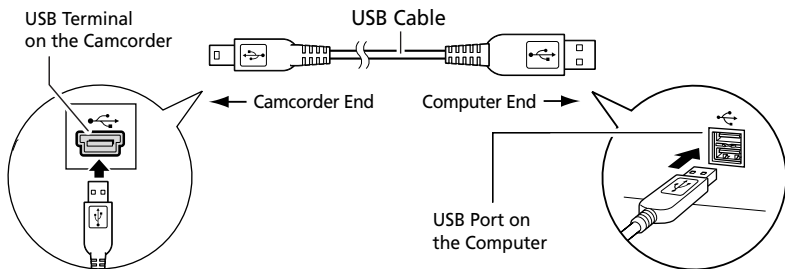
**2. Connect the power adapter to the camcorder.**

**3. Turn the POWER switch to PLAY (VCR) and move the TAPE/ CARD switch to CARD.**

Wait until the card access indicator stops flashing.

**4. Attach the supplied USB cable to the computer's USB port and the camcorder's USB Terminal.**

- Refer to your computer manual for the location of the computer's USB ports.
- See your camcorder instruction manual for connecting instructions.



## Downloading Images (ImageBrowser)

Below explains the procedure for connecting a camcorder to a computer using the USB cable.

For connecting a PC card reader/writer, see *Using a PC Card Reader/Writer* (📖 98).



- Observe following precautions when the camcorder's card access indicator is flashing (the camcorder is reading or writing from or to the memory card). Failure to do so may cause memory card data to become corrupted.
  - Do not open the memory card cover, remove the memory card or detach the USB cable.
  - Do not turn off the camcorder or the computer.
  - Do not change the position of the POWER switch or the TAPE/CARD switch.
- Format the memory card with the camcorder or from the Camera Settings Window (📖 100).
- Images recorded onto the memory card or downloaded to the hard disk are important original data files. Create a copy of the file first before working on it on your computer.

## Starting ImageBrowser

### Mac OS 9.0-9.2

- 1. Insert a memory card containing images into the camcorder.**
- 2. Connect the Power Adapter to the camcorder.**
- 3. Turn the POWER switch to PLAY (VCR) and move the TAPE/CARD switch to CARD.**

Wait until the card access indicator stops flashing.

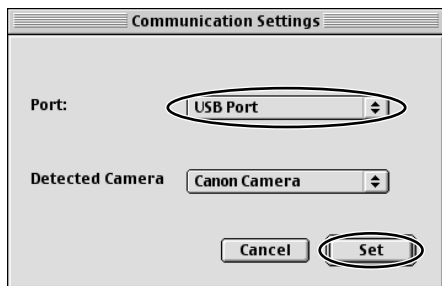
- 4. Connect the camcorder to the computer using the supplied USB cable (📖 91).**
  - ImageBrowser starts and the ImageBrowser Automation Wizard dialog appears. In the ImageBrowser Automation Wizard dialog, you can select the action that is carried out after ImageBrowser starts.
  - A dialog with the previously selected automated settings will appear the next time you start ImageBrowser.
    1. To use these settings unchanged, click the [Start] button.
    2. To do nothing, click [Cancel].
    3. To change the settings, click [Settings Change], select the action and click [OK].

## 5. Select [Display Images] and click [OK].

The Communications Settings window appears. This window only appears the first time the camcorder is connected.

## 6. Confirm that [USB port] and [Canon Camera] are selected and click [Set].

The Camera Window opens, displaying the camcorder images as thumbnails (small images).



### How to Set ImageBrowser to Not Start Automatically

## 1. Click the Apple menu and select [Control Panels] and [Canon ImageBrowser Auto Launch].

The Settings for USB Connection dialog will display.

## 2. Click [The application program below will start] to remove the check mark.

## 3. Click the close box at the upper left to close the dialog.

ImageBrowser will cease to start automatically thereafter.

Click here to close the dialog.



## Downloading Images (ImageBrowser)

### Mac OS X (version 10.1/10.2)



Do not connect the camcorder while the Classic environment is started. Likewise, do not start the Classic environment while the camcorder is connected.

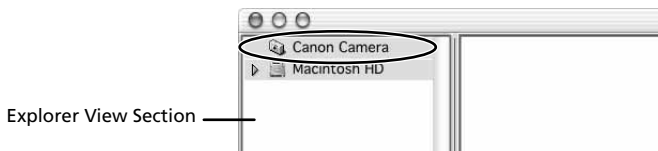
- 1. Insert a memory card containing images into the camcorder.**
- 2. Connect the Power Adapter to the camcorder.**
- 3. Turn the POWER switch to PLAY (VCR) and move the TAPE/CARD switch to CARD.**  
Wait until the card access indicator stops flashing.
- 4. Connect the camcorder to the computer using the supplied USB cable (see 91).**
- 5. Double-click the [Canon ImageBrowser] icon on the desktop.**

If the Canon ImageBrowser icon does not appear on the desktop, double-click the [Canon Utilities] folder on the drive on which the program was installed, followed by the [ImageBrowser] folder and [ImageBrowser] icon.



- 6. Click [Canon Camera] in the Explorer View section.**

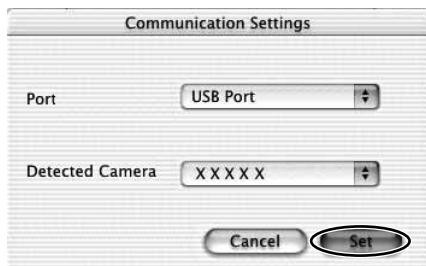
The Communications Settings window appears. This window only appears the first time the camcorder is connected.



## 7. Confirm that [USB port] and [Canon Camera] are selected and click [Set].

The Camera Window opens, displaying the camcorder images as thumbnails (small images).

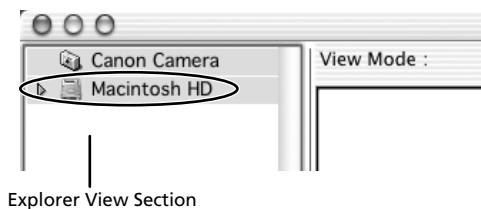
E



## Downloading Images to the Computer

### 1. Mac OS 9.0-9.2: Select [Macintosh HD] in the explorer view section.

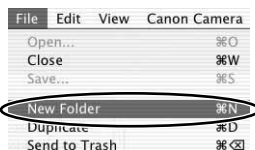
Mac OS X (version 10.1/10.2): Select the [👤 (user name)] subfolder of the [Users] folder in [Macintosh HD].



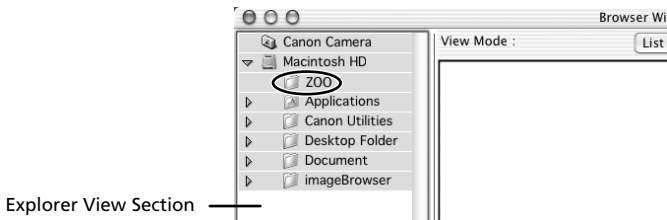
## Downloading Images (ImageBrowser)

### 2. Create a new folder for saving images from the memory card in the camcorder.

Click the [File] menu and select [New Folder]. A folder with the name "Untitled" will be created. Click it to change the folder name as you wish. In this example, we will input "ZOO."

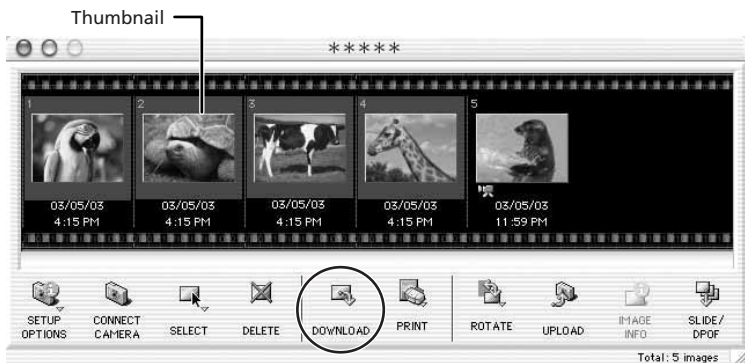


### 3. In the Explorer View Section, click the newly created folder.

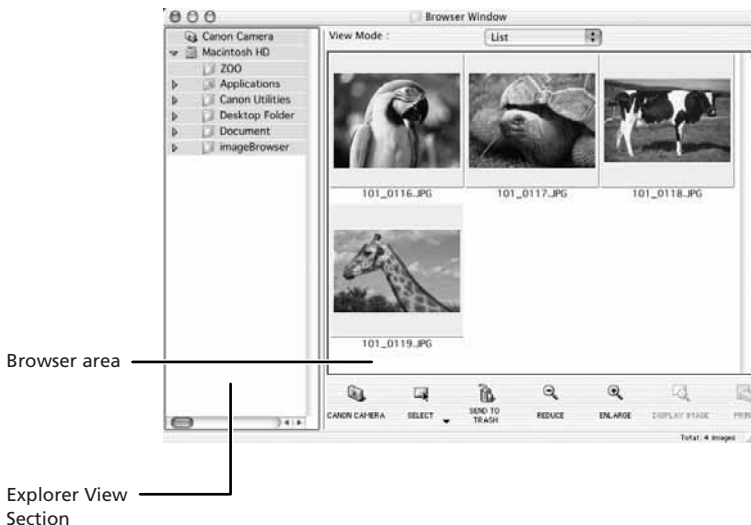


### 4. Select images in the Camera window and click [DOWNLOAD].

- You can select multiple images by holding down [Shift] or [Option] + [Shift] while clicking.
- A blue frame appears around the selected image.
- Downloaded images are saved to the computer and appear in the Browser area.







To disconnect the camcorder, click the close box (Mac OS 9.0-9.2) or the red close box (Mac OS X (version 10.1/10.2)) at the upper left of the Camera Window. The Camera Window will close.



- Double-clicking an image on the camera window imports it to the computer.
- You can also download images to the computer by dragging them from the Camera window and dropping them on the Browser area or the Explorer View Section.

## Downloading Images (ImageBrowser)

### Using a PC Card Reader/Writer

The basic operations of ImageBrowser are the same as when you connect the camcorder to the computer. Follow the procedure below to open the Camera Window.

For instruction on how to connect the PC Card Reader/Writer, please refer to the PC Card Reader Manual.

#### 1. Insert a memory card into the reader.

Mac OS X (version 10.1/10.2): If a dialog appears, click the red close box.

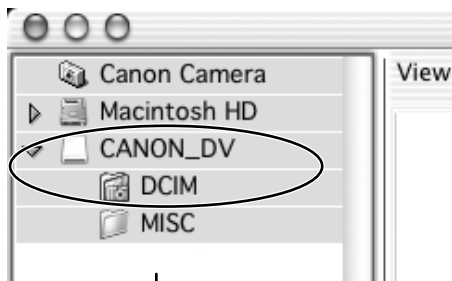
#### 2. Double-click the [Canon ImageBrowser] icon on the desktop.

- ImageBrowser starts.
- If the icon does not appear on the desktop, double-click the folder in which you installed the program, followed by the [Canon Utilities] and [ImageBrowser] folders and the [ImageBrowser] file.



#### 3. Double-click the [CANON\_DV] and [DCIM] folders in the Explorer View Section.

The Camera Window opens, displaying the memory card images as thumbnails (small images).

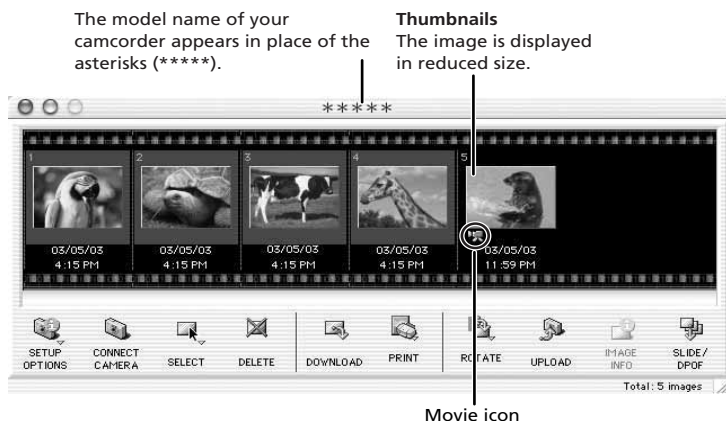


Explorer View Section

# Using Other ImageBrowser Functions

## Camera Window

The Camera Window opens when a connection to a camcorder is initiated. Images will be displayed as thumbnails (small images). Movies are displayed with the first scene as a still image, indicated with a movie icon. Buttons are activated when an image is selected.



- [SETUP OPTIONS]:** Adjusts the connection settings and camcorder settings. Menu options: Camera Settings, Communication Settings and My Camera.
- [CONNECT CAMERA]:** Reconnects the camcorder to the computer.
- [SELECT]:** Selects images. Menu options: Select All and Deselect All.
- [DELETE]:** Deletes selected images.
- [DOWNLOAD]:** Downloads selected image to the computer.
- [PRINT]:** Prints selected still images. Menu options: Layout printing and Index printing.
- [ROTATE]:** Rotates still images. Menu options: 90 degrees right, 90 degrees left and 180 degrees.
- [UPLOAD]:** Adds selected still images to the memory card.
- [IMAGE INFO]:** Displays image information (such as shooting date/time and image size).
- [SLIDE/DPOF]:** The [SLIDE] function cannot be used. [DPOF] allows you to select the print order settings.

### Camera Settings Window

You can adjust the date, time and owner settings in the Camera Settings window using the computer when the camcorder is connected. You can also check the remaining memory card capacity.

1. In the Camera Window, click the [SETUP OPTIONS] button and select [Camera Settings] from the displayed menu.
2. Check or change the settings.  
Click [OK] to close the window.

Input a camcorder owner name here  
(up to 31 characters).

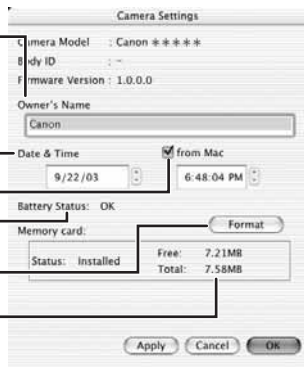
Set the date and time here.

Check this box to synchronize the camcorder  
to the computer's date and time settings.

Check the power status here.

Click this to format the memory card  
in the camcorder.

Check the remaining memory card  
capacity here.



## Browser Window

This section describes the various parts of the Browser Window display.

E

### Explorer View Section

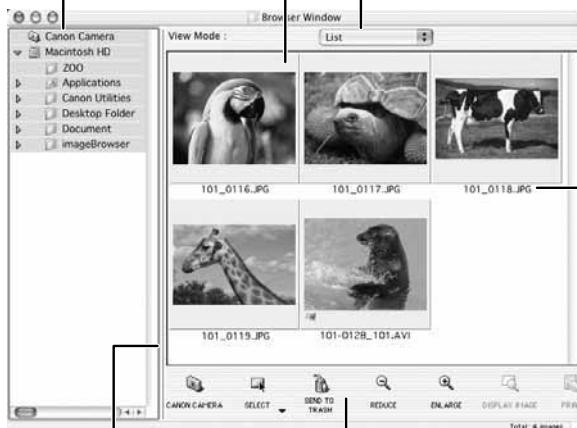
Displays the disks and folders that you can use on your computer.

If you click the disclosure triangle on the left edge of the display, you can switch between collapsing and expanding the contents of that folder.

### Browser Area

Displays the images contained in the selected folder.

You can select to display thumbnails or preview images.



### Image Name

This is where the file name of each individual image is displayed.

You can drag this line to change the position of the boundary between the Explorer View Section and the Browser Area.

### Control Panel

This area contains buttons that allow you to perform a variety of functions.

You can drag this part of the frame to change the size of the Browser Window.

**[CANON CAMERA]:** Displays the Camera Window.

**[SELECT]:**

Selects all images in a folder. Menu options: Select All and Deselect All.

**[SEND TO TRASH]:** Deletes selected images.

**[REDUCE]:**

Reduces the size of the thumbnails in the Browser Area.

**[ENLARGE]:**

Enlarges the size of the thumbnails in the Browser Area.

**[DISPLAY IMAGE]:**

Displays a still image in the Image Viewer window, or opens a window for playing back a movie.

**[PRINT]:**

Prints selected still images. Menu options: Layout printing and Index printing.

## Using Other ImageBrowser Functions

### Image Viewer Window

The Image Viewer window appears when you double-click a still image, or when you select a still image and click [DISPLAY IMAGE].



Enlarge or reduce the still image

Current zoom ratio

#### CROP

You can extract a part of the still image.

1. Click on the still image and drag to form a rectangular frame.  
You can move or change the size of the frame.
2. Click this button to extract the area within the frame.  
The extracted part of the still image appears.

#### ADJUST COLOR

Click here to display the Adjust Color window to adjust hue, saturation and lightness of the still image by dragging the respective slide.

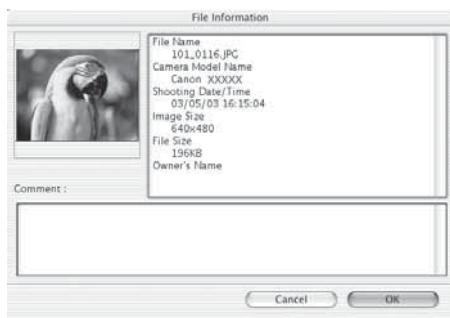
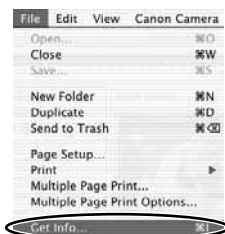
## Displaying the Image Information

You can check the image information such as shooting date/time or file size.

### 1. Select the image of which you wish to display the information.

### 2. From the [File] menu, select [Get Info].

- The File Information window appears.
- If you wish to add a comment, input it in the [Comment] area.
- Click [OK] to close the window.

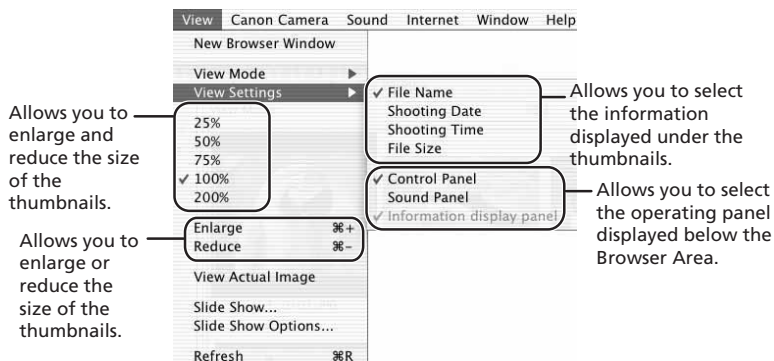


- It depends on your camcorder model which image information will be displayed.
- When you modify and save an image using another program, shooting information or comments may be lost.

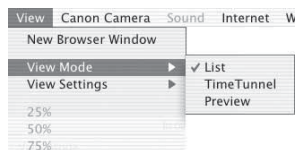
## Using Other ImageBrowser Functions

### [View] Menu

You can select the display settings of the Browser Area by selecting [View Settings] from the [View] menu.



If you select [View Mode] followed by [Preview] from the [View] menu, you can display a preview of an image in the Browser Area. To stop displaying the preview image, select [View Mode] followed by [List] in the [View] menu.





# Displaying Images in TimeTunnel

This program displays images in the order of the creation date.

## 1. In the [View] menu, select [View Mode] followed by [TimeTunnel].

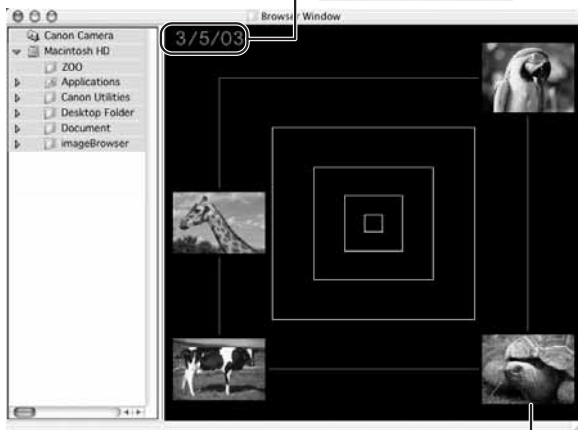
The image information will be displayed when you point at an image.



The date/time at which the images were shot appears on the red line. You can change this date/time by double-clicking it on the display. A window similar to the one below appears. Specify the new date/time.



Move the slider up or down to move backward or forward in time.



Tool Panel

Makes the TimeTunnel rings octagonal.

Double-click a thumbnail to display it in another window.



Allows you to specify the date for the images displayed.

Makes the TimeTunnel look curved.

Changes the number of TimeTunnel rings.

Click to display the control panel.

**[Display Tool Panel]:**

Select to display or hide the tool panel.

**[Auto Cruise]:**

Enables or disables [Auto Cruise]. When [Auto Cruise] is active, the time movement continues even after you have moved and released the bar.

**[Switch to Browser View]:**

Exit TimeTunnel, and returns to the previous screen.

## Playing Back Movies From a Memory Card

In the Camera Window and Browser Area, movies are displayed with the first scene as a still image with a movie icon ( ). When you double-click the thumbnail in the Browser Area, QuickTime Player starts and plays back the movie.

### 1. In the Browser Area, double-click a thumbnail with a (movie) icon.

QuickTime Player starts.



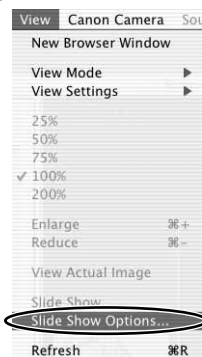
### 2. Click the ► (play) button in QuickTime Player.

The movie will be played back.



## Running a Slide Show

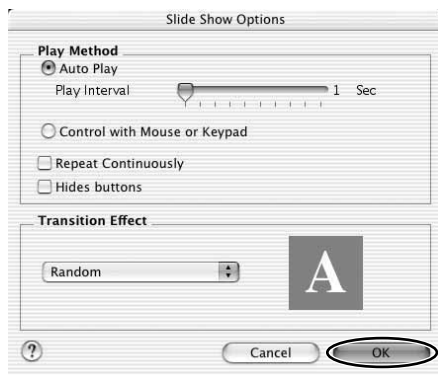
### 1. From the [View] menu, select [Slide Show Options].



E

### 2. Select the slide show settings and click [OK].

- [Auto Play]: Moves to the next still image automatically. Select the interval by sliding the control under [Play Interval] (from 1 to 30 seconds).
- [Control with Mouse or Keypad]: Advances the slide show manually with the mouse or keyboard.
- [Repeat Continuously]: Runs the slide show in a loop.
- [Hide buttons]: Hides the buttons during the slide show.
- [Transition Effect]: Select the transition effect to be used when moving from one slide to another. When you select an effect, you can check the effect in the preview window.



### 3. Select the images and select [Slide Show] from the [View] menu.

Click  on the lower right of the screen to end the slide show.

## Adding Sound to a Still Image

To add sound to still images, use the MAC OS recording function. Depending on the computer, you may need to connect peripherals such as microphones. Check if your computer settings allow recording. The sound cannot be played back on the camcorder.

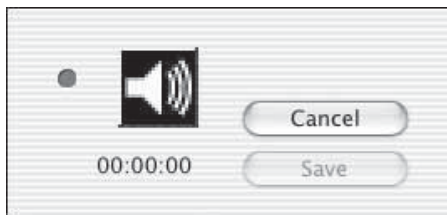
### Adding Sound to a Still Image

#### 1. In the Browser Area, select a still image and select [Record] from the [Sound] menu.

The recording window appears.




#### 2. Click and start recording when the [Save] button is enabled.



#### 3. Click [Save] to stop recording.

-  appears on the still image.
- The sound file will be copied in AIFF format (extension ".AIF") to the same folder as the still image.



To remove sound from a still image, select [Send to Trash] from the [Sound] menu.  disappears and the copied sound file will be deleted.

## Playing Back the Sound

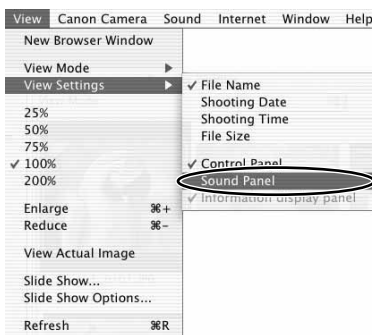
In the Browser Area, select the still image with the sound attachment and select [Play] from the [Sound] menu.

- The sound will be played back.
- You can control playback by selecting [Pause] or [Stop] from the [Sound] menu.

## Using the Sound Panel

You can use the sound panel to record, playback and adjust the volume.

1. From the [View] menu, select [View Settings] and select [Sound Panel] from the displayed menu.



The sound panel appears.



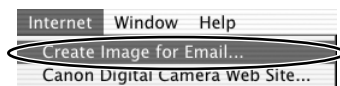
2. In the Browser Area, select the still image with the sound attachment.

You can record or play back the sound, adjust the volume, or stop or pause playback.

# Attaching Images to E-mail Messages

You can attach selected images to an E-mail message.

1. Select the images you wish to send in the Browser Area.
2. From the [Internet] menu, select [Create Image for Email].



3. Specify the image size and click [Next].

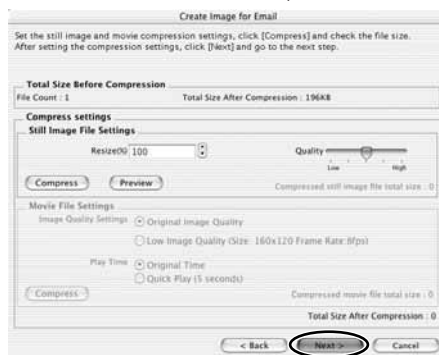
Select this if you do not wish to reduce the size of the still image.

Normally, select this option.



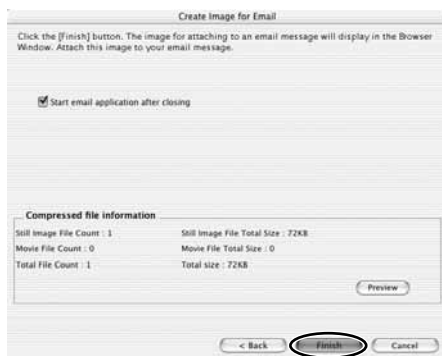
4. Specify the reduction ratio and image quality and click [Next].

- [Resize (%)] : Select the reduction ratio relative to the original size of the image.
- [Quality] : Select the image quality. The lower the quality, the rougher the image becomes, but the size of the file also becomes smaller.
- [Compress] : Use it to check the file size when you actually compress the image. The file size appears next to "Total Size After Compression".

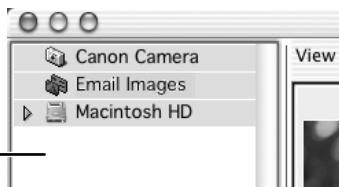


## 5. Select whether you wish to start your e-mail software and click [Finish].

- If you have selected [Start email application after closing], your e-mail software starts automatically. Open a new e-mail message and attach the image. With some types of e-mail software, you can attach images to e-mail messages simply by dragging them from the Browser Area to the new message window.
- Click [Preview] to check the changed image.
- The image will be saved to the [Email Images] folder in the explorer view section.



Explorer View Section



## Attaching Images to E-mail Messages



- You can set the e-mail software to start automatically in step 5. Note that some e-mail software may not start automatically.

**Mac OS 9.0 ~ 9.2:** From the Apple menu, select [Control Panel], followed by [Internet] and click the [Email] tab. Change the setting in the displayed window.

**Mac OS X (version 10.1/10.2):** From the Apple menu, select [System Preferences], followed by [Internet] and click the [Email] tab. Change the setting in the displayed window.

- The images in the [Email Images] folder are saved in the following location:

**Mac OS 9.0 ~ 9.2:** Open the folder you installed ImageBrowser or the [Document] folder, followed by [ImageBrowserUserData] and [Mail].

**Mac OS X (version 10.1/10.2):** Open the [Users] folder, followed by [User login name], [Library], [Preferences], [ImageBrowserUserData], and [Mail].



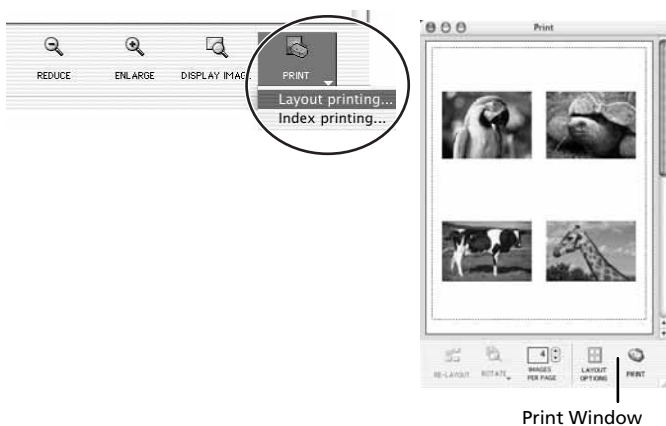
## Printing Still Images (ImageBrowser)

You can select the layout when printing still images. Movies cannot be printed.



Do not open the memory card cover, remove the memory card, detach the USB cable or turn off the camcorder while data is being transferred to the printer (when the camcorder's card access indicator is flashing). Doing so may cause memory card data to become corrupted.

- 1. Select the still image(s) you wish to print in the Browser Window.**
- 2. Click [PRINT] and select [Layout printing] from the displayed menu.**
  - The Layout Options window and Print window appears.
  - If the Layout Options window does not appear, display it by clicking [LAYOUT OPTIONS] in the Print window.



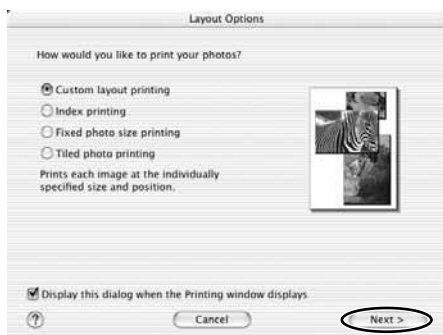
Print Window

E

## Printing Still Images (ImageBrowser)

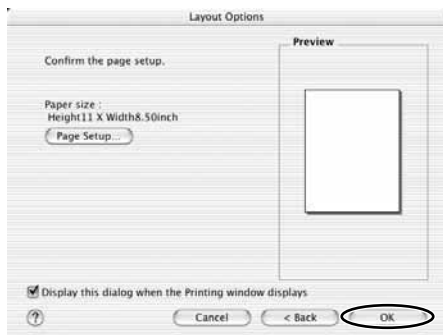
### 3. In the Layout Options window, select a layout and click [Next].

The Custom Layout printing option allows you to freely change the size and position of the still images for printing. The other options allow you to print an index or print onto Canon perforated paper. Canon perforated paper cannot be selected with Mac OS X (version 10.1/10.2).



### 4. Select a paper size and click [OK].

- The Print window opens, allowing you to change the layout and printing settings.
- The settings available will vary according to the type of layout selected in Step 3.



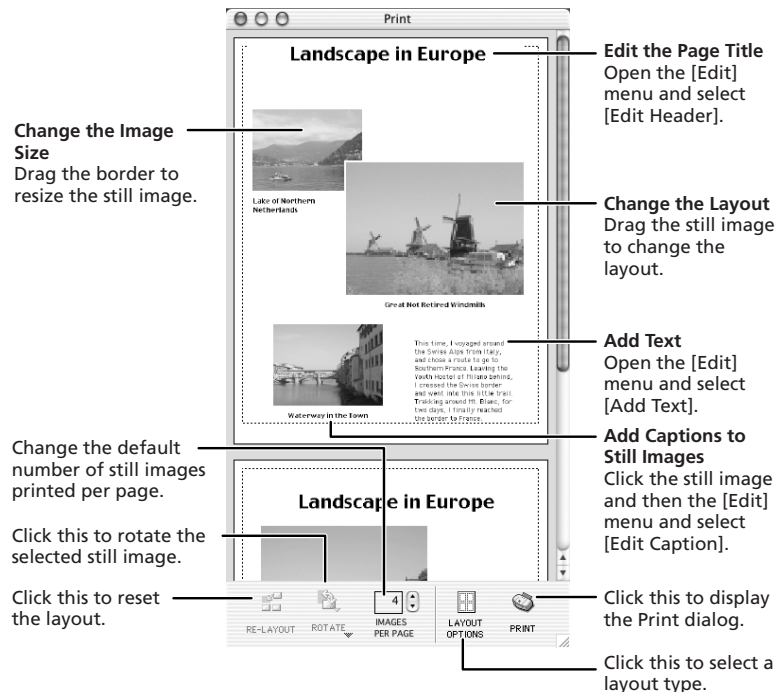
## 5. Click [PRINT] in the Print window.

The Print dialog appears.

## 6. Click [Print].

Printing starts.

## The Print Window



## Printing Still Images (ImageBrowser)

### Adjusting Image Quality and Printing (Exif 2.2 Compliant)

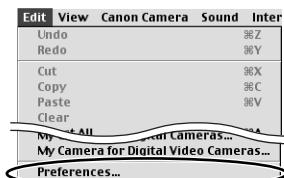
ImageBrowser allows you to print images with image quality adjustments. ImageBrowser also supports the Exif 2.2 standard (or Exif Print).



- Still images shot with camcorders complying with the Exif 2.2 standard incorporate shooting settings information, such as the shooting conditions and scene mode, along with the image data. The Exif Print adjustment protocol uses this information to correct the image quality more accurately to reflect the shooting settings.
- When printing from ImageBrowser, the image quality adjustment settings are active for all still images.

#### Mac OS 9.0-9.2

### 1. Click the [Edit] menu in ImageBrowser and select [Preferences].



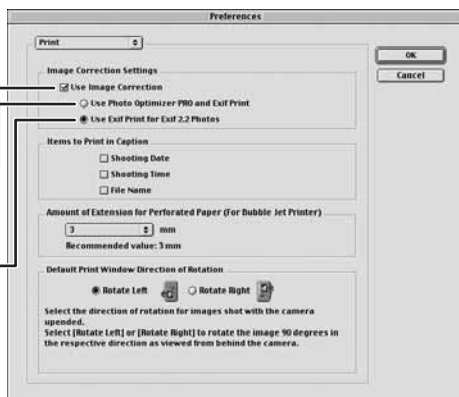
### 2. In the Preferences window, select [Print], set the image quality settings and click [OK].

See *Printing Still Images* for the next steps (113).

A check mark must be placed here to automatically correct the image quality.

Select this option to automatically correct images shot with Exif 2.2 compliant camcorders and other images.

Select this option to automatically correct only images shot with Exif 2.2 compliant camcorders.



1. Click the [ImageBrowser] menu in ImageBrowser and select [Preferences].



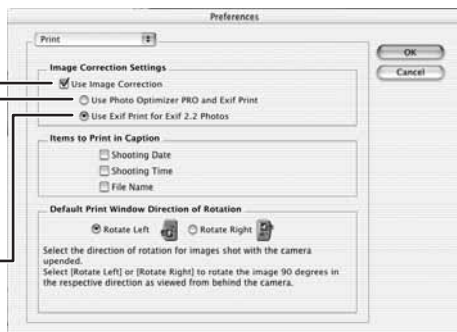
2. In the [Preferences] window, select [Print], set the image quality settings and click [OK].

See *Printing Still Images* for the next steps (📖 113).

A check mark must be placed here to automatically correct the image quality.


Select this option to automatically correct images shot with Exif 2.2 compliant camcorders and other images.

Select this option to automatically correct only images shot with Exif 2.2 compliant camcorders.



## Printing Still Images (ImageBrowser)

### Selecting the Print Mode and Number of Copies (DPOF Print Settings)

You can select the image and the number of print (  print settings) for automatic printing on a DPOF\*-compliant printer. You can set the DPOF print settings also on the camcorder.

\*Digital Print Order Format



When you are using a SD memory card, make sure the protect switch is set to allow recording.



The Edit Slide/DPOF window allows print settings on up to 998 still images. With some camcorders, DPOF print settings are limited to a maximum of 200 still images. In that case, all DPOF print settings on the 201st still image and onward will be erased.

#### 1. Click (SLIDE/DPOF) in the Camera Window.

The Edit Slide/DPOF window appears.



#### 2. Select the still image you wish to print and the number of copies.

- [Standard Print]: Prints selected images in the specified number of copies. Use the arrows next to the boxes below the image to select the number of copies.
- [Index Print] and the option [Titles] of the [Edit] menu (printing of date and file number) are not supported by the camcorder.



#### 3. Click [Save to Camera].

The DPOF print settings will be saved to the memory card.

## Merging Panoramic Images (PhotoStitch)

You can merge a series of overlapping images into a single, seamless panorama. PhotoStitch automatically arranges still images recorded with the camcorder's Stitch Assist mode in their correct order and orientation, making it easy to merge them. Please refer to the Camcorder Instruction Manual to learn how to record in Stitch Assist mode.

The following instruction explains how to merge still images recorded in Stitch Assist mode with the camcorder.



Still images recorded in Stitch Assist mode with Wide-converter or Tele-converter attached cannot be merged correctly.

### 1. Click the green stitch mark in the Camera Window.



### 2. In the confirmation window, click [Yes].

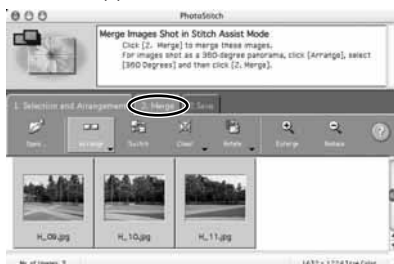
PhotoStitch starts.



## Merging Panoramic Images (PhotoStitch)

### 3. Arrange the order of the images and click [2.Merge].

Operational instructions are displayed in the upper section of the window.



### 4. Click [Start].



### 5. Select [3. Save] and then click [Save].

- Select the destination folder, input the file name and click [Save].
- In the View the Saved Image? window, click [Yes]. The Viewer window opens and displays the merged image.



- You can record the surroundings in 360 degrees, and stitch them together later to form a 360-degrees cylinder. (In [1. Selection and Arrangement], select [Arrange] and [360 degrees].) By saving this stitched image in QuickTime VR format, you can then get a virtual view of the surroundings by manipulating the mouse.
- For more details, please refer to the PhotoStitch Help menu.

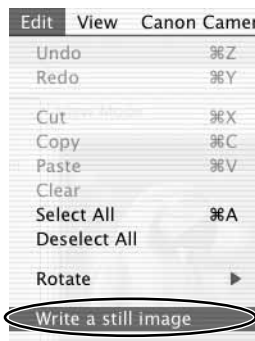


## Exporting Images

You can change the size, resolution or file format of selected still images. You can also export selected movie and still image information to a text file, or copy and rename movies and still images.

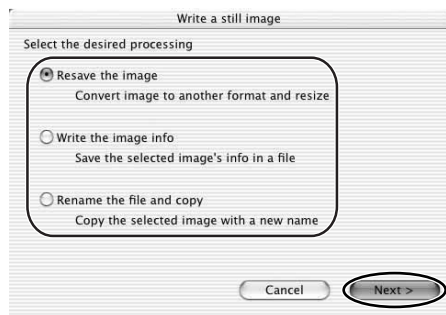
E

1. Select images in the Browser Area.
2. From the [Edit] menu, select [Write a still image].



3. Select the export type and click [Next].

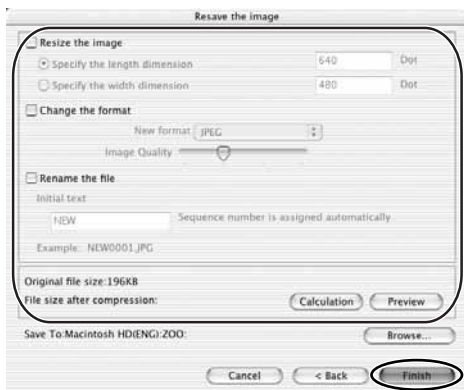
- [Resave the image]: Converts still images to another file format, resizes and saves them as new files. You can select the file format from JPEG, PICT, TIFF, and BMP. You can also specify a prefix to be added to the exported images.
- [Write the image info]: Exports selected movie and still image information to a text file.
- [Rename the file and copy]: Renames and copies selected movies and still images. You can also specify a prefix to be added to the exported images.



## Exporting Images

### 4. Specify the export settings and click [Finish].

The options for the export settings vary according to the export type. Follow the instructions displayed in the window. In each case, specify the destination folder and file name for the images to be exported.



## Adding Still Images from Your Computer to the Memory Card

You can add still images from the computer to a memory card. You can also add sample images for card mix from the DIGITAL VIDEO SOLUTION DISK For Macintosh.

E



- Still images in EXIF-JPEG, TIFF, PICT, and Windows bitmap format can be added to a memory card. However, the still images will be saved in JPEG format on the memory card.
- You can also add still images to a memory card by using drag and drop to move it from the browser area to the Camera window.

## Adding Still Images to the Memory Card

### 1. In the Camera Window, click [UPLOAD].

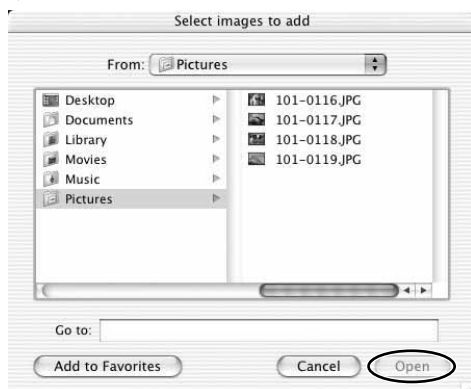


### 2. Select the still image you wish to add and click [Open].

You can check the selected still image.

Mac OS 9.0-9.2: Click [Show Preview].

Mac OS X (version 10.1/10.2): Click the file name.



## Adding Still Images from Your Computer to the Memory Card

### 3. In the Add Image window, select the image size and click [Add].

- The selected images will be recorded to the memory card.
- When recording is complete, the images will appear in the Camera Window.

## Adding Sample Images to the Memory Card

You can add sample images for card mix and card animation to the memory card. 4 images for CARD CHROMA, 2 images for CARD LUMINANCE, 2 images for CAMERA CHROMA and 4 images for CARD ANIMATION are provided on the DIGITAL VIDEO SOLUTION DISK For Macintosh.

1. Insert the DIGITAL VIDEO SOLUTION DISK For Macintosh to the computer's CD-ROM drive.
2. In the Camera Window, click [UPLOAD].

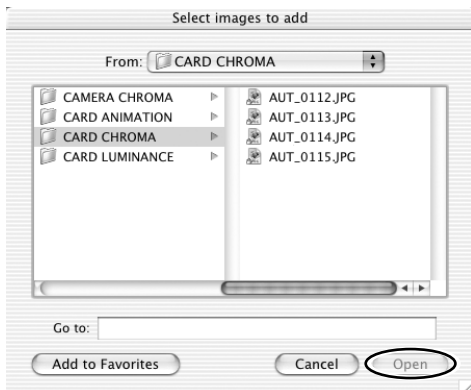


**3. Double-click the CD-ROM icon, followed by the [DVC CARD IMAGE] folder.**

The folders [CARD CHROMA], [CARD LUMINANCE], [CAMERA CHROMA] or [CARD ANIMATION] appear.



**4. Open the [CARD CHROMA], [CARD LUMINANCE], [CAMERA CHROMA] or [CARD ANIMATION] folder, select the image you wish to copy to the camcorder and click [Open].**



**5. In the Add Image window, click [Add].**

- The selected images will be recorded to the memory card.
- When recording is complete, the images will appear in the Camera Window.

## Customizing Your Camcorder with the My Camera Settings

The start-up image, start-up sound, operation sound, self-timer sound and shutter sound are called the My Camera Settings.

ImageBrowser already contains several My Camera Settings which can be selected in theme sets or individually. The “Animal” theme, for example features and animal in the start-up image and animal calls in each of the sound files. The files all begin with the same word (e.g. “Animal”, “Baseball”).

You can use the pre-recorded My Camera Settings (□ 129) or add still images to the My Camera Settings (□ 130).



Observe following precautions while the My Camera Settings are saved to the camcorder.

- Do not open the memory card cover or remove the memory card.
- Do not detach the USB cable.
- Do not turn off the camcorder or computer.
- Do not change the position of the POWER switch or TAPE/CARD switch.

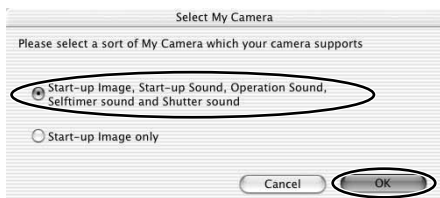
## Displaying the My Camera Window

### 1. From the [Edit] menu in the Browser Window, select [My Camera].

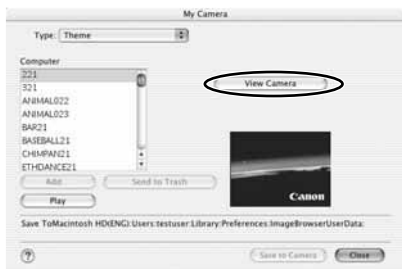
The Select My Camera window appears.



2. Select [Start-up Image, Start-up Sound, Operation Sound, Selftimer Sound and Shutter Sound] and click [OK].



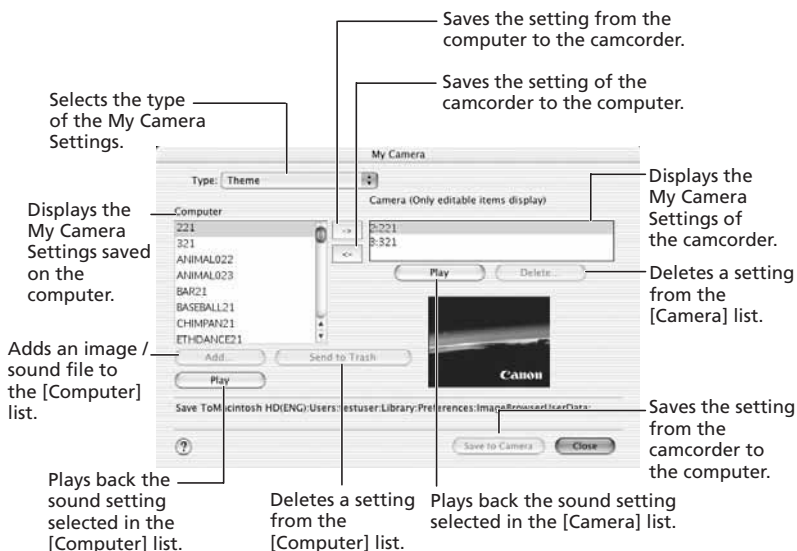
3. Click [View Camera] to display the My Camera Settings of the camcorder.



Alternatively, you can display the My Camera window from the Camera Window by clicking [SETUP OPTIONS] and selecting [My Camera] from the displayed menu.

# Customizing Your Camcorder with the My Camera Settings

## My Camera Window





## Saving the My Camera Settings to the Camcorder

### 1. In the My Camera window, select the theme set you wish to save to the camcorder in the [Computer] list.

- To change the settings individually, select the setting type in the [Type] list.
- A window appears when you select a theme set and plays back the start-up, operation, selftimer and shutter sound.



### 2. Select the setting you wish to replace in the [Camera] list and click [→].



### 3. On the confirmation window, click [OK].

### 4. Click [Save to Camera].



### 5. On the confirmation window, click [OK].

- The selected setting replaces the old setting and appears in the [Camera] list.
- If you wish to use this setting on the camcorder, change the My Camera Setting on the camcorder itself. Refer to the Camcorder Instruction Manual for details.

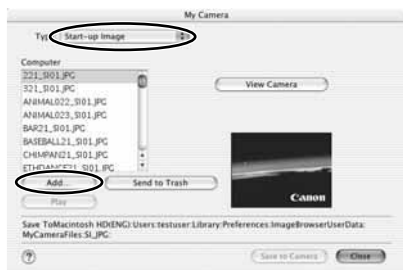
## Adding Still Images to the My Camera Window



- To use still images recorded with your camcorder, you need to download them to the computer before you can add them to the My Camera Window.
- Sound cannot be added.

### 1. In the My Camera window, select [Start-up Image] in the [Type] list and click [Add].

The [Select an image to add] window appears.



### 2. Select the still image file (JPEG) you wish to add and click [Open].

The selected file appears in the [Computer] list. You can now save the newly added file to the camcorder using the procedures described in *Saving the My Camera Settings to the Camcorder* (129).



- To delete a setting, select the file and click the [Send to Trash] button below the [Computer] list.

## Uninstalling the Software

Uninstall the software when you wish to delete it from your computer or when reinstallation is required to fix corrupted files.

E

### Uninstalling ImageBrowser and PhotoStitch

Move the program's folder into the Trash to uninstall programs such as ImageBrowser and PhotoStitch.



- If the program folders contain subfolders into which images have been saved, be careful not to accidentally delete those subfolders.
- For more details on how to uninstall ImageBrowser, refer to Read Me.

## Troubleshooting

### Connection

---

#### **❓ Camcorder is not recognized when connected to the computer.**

##### **→ Computer does not support the USB interface.**

The USB interface is not supported for computer not in compliance with the following requirements. Acquire the necessary system to use the USB interface.

Requirements: Genuine Apple Computer brand computer with a built-in USB interface.

##### **→ There is no memory card in the camcorder.**

Insert a memory card into the camcorder.

##### **→ The camcorder is not set to the correct mode.**

Turn the POWER switch to PLAY (VCR) and move the TAPE/CARD switch to CARD.

##### **→ Camcorder is not correctly connected to the computer.**

Read *Connecting the Camcorder to a Computer* (📖 91) and check the connection.

Ensure that you are using the correct cable and that its connectors are in good shape.

##### **→ If you are experiencing operational problems, detach the USB cable from the camcorder and computer and terminate the connection. Restart the computer and then reconnect the camcorder.**

### ImageBrowser Operation

---

#### **❓ Cannot download images**

##### **→ The camcorder is not set to the correct mode.**

Turn the POWER switch to PLAY (VCR) and move the TAPE/CARD switch to CARD.

#### **❓ Image files or folders do not appear in ImageBrowser.**

##### **→ Images of folders shown in ImageBrowser and the actual file contents may be different.**

Click the [View] menu and select [Refresh].



**CANON INC.**

**U.S.A.** ————— **Canon U.S.A., Inc.**  
Canon Customer Care Center  
Tel (US): 1-800-828-4040  
(Mon.-Fri., 9 AM to 8 PM Eastern Time)

**CANADA** ————— **Canon Canada Inc.**  
Tel (Canada): 1-800-OK-CANON (1-800-652-2666)

**ASIA** ————— **Canon Hongkong Co., Ltd.**  
19/F., The Metropolis Tower, 10 Metropolis Drive,  
Hung Hom, Kowloon, Hong Kong  
Phone: 852-2170-2828  
Fax: 852-2723-9684