

Canon

Digital Video Software **Macintosh**

Version 11

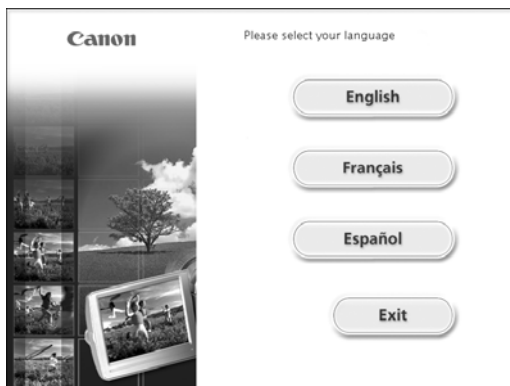
Instruction Manual

E

Mode d'emploi

F

Manual de Instrucciones

Es

READ CAREFULLY BEFORE USING

Canon Software License Agreement

IMPORTANT - READ THIS AGREEMENT BEFORE USING THE SOFTWARE ON THE CD-ROM IN THIS BOX. BY USING THE SOFTWARE, YOU AGREE TO BE BOUND BY THE TERMS OF THIS AGREEMENT.

This is a license agreement (the "Agreement") between you and Canon Inc. ("Canon"). IF YOU DO NOT AGREE TO THE TERMS AND CONDITIONS OF THIS AGREEMENT, DO NOT USE THE SOFTWARE PROGRAM ON THE CD-ROM (INCLUDING ALL SOUND AND IMAGE DATA) AND THE USER MANUAL IN THIS BOX (COLLECTIVELY, THE "SOFTWARE") AND PROMPTLY RETURN THE SOFTWARE TO YOUR POINT OF PURCHASE FOR A REFUND.

In consideration of the right to use the SOFTWARE, you agree to abide by the terms and conditions of this Agreement.

- 1. LICENSE:** Canon grants you the personal, non-exclusive right to use the SOFTWARE only on a single computer. You may physically transfer the SOFTWARE from one computer to another provided that the SOFTWARE is used on only one computer at a time. You shall not install or use the SOFTWARE on a network, multiple CPU, multiple site arrangement, or any other hardware configuration where the SOFTWARE is accessible to more than one CPU or to more than one user.

With respect to the sound and image data ("Data") contained in the Software, which are to be downloaded to the applicable Canon digital camera product, Canon grants you a personal, non-exclusive license to use the Data on a single Canon digital camera product only.

YOU SHALL NOT ASSIGN, SUBLICENSE, RENT, LEASE, LOAN, CONVEY OR OTHERWISE USE, TRANSFER, COPY, TRANSLATE, CONVERT TO ANOTHER PROGRAMMING LANGUAGE, ALTER, MODIFY, DECOMPILE OR DISASSEMBLE THE SOFTWARE, IN WHOLE OR IN PART, EXCEPT AS EXPRESSLY PROVIDED IN THIS AGREEMENT.

- 2. BACK-UP COPY:** You may make one copy of the SOFTWARE solely for back-up purposes, or copy the SOFTWARE onto the permanent storage device (e.g. a hard disk) of your computer and retain the original for back-up purposes. Any other copying of the SOFTWARE is a violation of this Agreement. You must reproduce and include the copyright notice on the back-up copy.
- 3. SUPPORT AND UPDATES:** Neither Canon, nor its subsidiaries, dealers or distributors will be responsible for providing maintenance or support for use of the SOFTWARE. No updates, fixes or support will be made available for the SOFTWARE.
- 4. LIMITED WARRANTY AND LIMITATION OF LIABILITY:** It is your responsibility to choose, maintain and match the hardware and software components of your computer system. Thus Canon does not guarantee uninterrupted service or correction of errors or that the functions or performance of the SOFTWARE will meet your requirements. THE SOFTWARE IS LICENSED ON AN "AS IS" BASIS AND WITHOUT WARRANTY OR CONDITION OF ANY KIND. The CD-ROM storing the SOFTWARE is warranted only against defective material under normal use for a period of ninety (90) days after purchase from an authorized Canon dealer as evidenced by your sales receipt. Your sole remedy for a defective CD-ROM shall be replacement of the same without charge when returned by you at your expense to your point of purchase and proven to be defective upon inspection. The Replacement CD-ROM will be warranted for the remainder of the original ninety (90) day warranty period of the defective CD-ROM. The limited warranty does not apply if the failure of the CD-ROM resulted from accident, abuse or misapplication of the SOFTWARE and shall not extend to anyone other than the original user of the SOFTWARE.

EXCEPT AS SPECIFICALLY SET FORTH IN THIS PARAGRAPH 4, CANON, CANON'S SUBSIDIARIES, DISTRIBUTORS AND DEALERS DISCLAIM ALL WARRANTIES, OR CONDITIONS, EXPRESS OR IMPLIED, INCLUDING ANY WARRANTY OR CONDITION OF MERCHANTABILITY OR FITNESS FOR A PARTICULAR PURPOSE, WITH RESPECT TO THE SOFTWARE.

NEITHER CANON NOR ANY OF CANON'S SUBSIDIARIES, DISTRIBUTORS OR DEALERS IS LIABLE FOR ANY DAMAGES HOWSOEVER CAUSED, INCLUDING WITHOUT LIMITATION, DIRECT, CONSEQUENTIAL OR INCIDENTAL LOSS OR DAMAGE INCLUDING LOSS OF PROFITS, EXPENSE OR INCONVENIENCE HOWSOEVER CAUSED OR ARISING OUT OF THE SOFTWARE OR THE USE THEREOF.

NEITHER CANON, NOR ANY OF CANON'S SUBSIDIARIES, DISTRIBUTORS OR DEALERS SHALL HAVE ANY OBLIGATION TO INDEMNIFY YOU AGAINST ANY CLAIM OR SUIT BROUGHT BY A THIRD PARTY ALLEGING THAT THE SOFTWARE OR THE USE THEREOF INFRINGES ANY INTELLECTUAL PROPERTY OF SUCH THIRD PARTY.

SOME STATES, PROVINCES OR LEGAL JURISDICTIONS DO NOT ALLOW THE EXCLUSION OF IMPLIED WARRANTIES, OR THE LIMITATION OR EXCLUSION OF LIABILITY FOR INCIDENTAL OR CONSEQUENTIAL DAMAGES, OR PERSONAL INJURY OR DEATH RESULTING FROM NEGLIGENCE ON THE PART OF THE SELLER, SO THE ABOVE DISCLAIMERS AND EXCLUSIONS MAY NOT APPLY TO YOU.

- 5. TERM:** This Agreement is effective upon your using the SOFTWARE and remains in effect until expiration of all copyright interests in the SOFTWARE unless earlier terminated. You may terminate this Agreement by destroying the SOFTWARE. This Agreement will also terminate without notice to you if you fail to comply with any of the terms of this Agreement and you must then promptly return the SOFTWARE. In addition, Canon may enforce its other legal rights.

6. U.S. GOVERNMENT RESTRICTED RIGHTS NOTICE:

The SOFTWARE is a "commercial item," as that term is defined at 48 C.F.R. 2.101 (Oct 1995), consisting of "commercial computer software" and "commercial computer software documentation," as such terms are used in 48 C.F.R. 12.212 (Sept 1995). Consistent with 48 C.F.R. 12.212 and 48 C.F.R. 227.7202-1 through 227.7202-4 (June 1995), all U.S. Government End Users shall acquire the SOFTWARE with only those rights set forth herein. Manufacturer is Canon Inc./30-2, Shimomaruko 3-chome, Ohta-ku, Tokyo 146-8501, Japan.

- 7. EXPORT RESTRICTIONS:** You agree to comply with all export laws and restrictions and regulations of the country involved, and not to export or re-export, directly or indirectly, the SOFTWARE in violation of any such laws and restrictions and regulations, or without all necessary approvals.

8. SEVERABILITY:

In the event that any provision of this Agreement is declared or found to be illegal by any court or tribunal of competent jurisdiction, such provision shall be null and void with respect to the jurisdiction of that court or tribunal and all the remaining provisions of this Agreement shall remain in full force and effect.

- 9. CONTROLLING LAW:** The terms of this Agreement as it relates to purchases of the Software in the United States of America shall be governed and construed in all respects in accordance with the laws and regulations of the State of New York, without reference to choice of law principles. The terms of this Agreement as it relates to purchases of the Software in Canada shall be governed by the laws of the province of Ontario.

READ CAREFULLY BEFORE USING

10.OWNERSHIP: All rights, including but not limited to copyrights and trade secret rights, to the SOFTWARE belong to Canon, its affiliated corporations and third party licensors. Your use of the SOFTWARE is subject to the laws of the United States, and Canada, and other applicable copyright and trademark laws, and nothing in this Agreement constitutes a waiver of the rights of Canon, its affiliated corporations and third party licensors under such laws. You only own the CD-ROM media in which the Software is stored. Except as expressly provided herein, no license or right, express or implied, is hereby conveyed or granted by Canon to you for any intellectual property of Canon. Nothing contained in Paragraph 1 shall be construed to give Canon any ownership rights in any images, graphics or textual material that you save in connection with the Software.

You may not modify, remove or delete any or all copyright notices (i) which are contained in the Software, including any copy thereof, and (ii) which are on the original CD-ROM and on the medium of a back-up copy made pursuant to Section 2 above.

11.ACKNOWLEDGEMENT: BY USING THE SOFTWARE, YOU ACKNOWLEDGE THAT YOU HAVE READ THIS AGREEMENT, UNDERSTOOD IT, AND AGREE TO BE BOUND BY ITS TERMS AND CONDITIONS. YOU ALSO AGREE THAT THIS AGREEMENT IS THE COMPLETE AND EXCLUSIVE STATEMENT OF AGREEMENT BETWEEN YOU AND CANON CONCERNING THE SUBJECT MATTER HEREOF AND SUPERSEDES ALL PROPOSALS OR PRIOR AGREEMENTS, VERBAL OR WRITTEN, AND ANY OTHER COMMUNICATIONS BETWEEN THE PARTIES RELATING TO THE SUBJECT MATTER HEREOF. NO AMENDMENT TO THIS AGREEMENT SHALL BE EFFECTIVE UNLESS SIGNED BY A DULY AUTHORIZED OFFICER OF CANON.

Contents

E

READ CAREFULLY BEFORE USING	2
Canon Software License Agreement	2
Read This First	6
Checking Supplied Accessories	7
System Requirements	8
What Can Be Accomplished with the Software	9
Installing the Digital Video Software	10
Connecting the Camcorder to a Computer	13
Downloading Images (ImageBrowser)	14
Starting ImageBrowser	14
Downloading Images to the Computer	17
Using a PC Card Reader/Writer	19
Using Other ImageBrowser Functions	20
Camera Window	20
Camera Settings Window	21
Browser Window	22
Image Viewer Window	23
Displaying the Image Information	24
[View] Menu	25
Displaying Images in TimeTunnel	26
Playing Back Movies From a Memory Card	27
Editing Movies (MovieEdit Task) (Mac OS X Only)	28
Running a Slide Show	30
Adding Sound to a Still Image	31
Adding Sound to a Still Image	31
Playing Back the Sound	32
Using the Sound Panel	32
Attaching Images to E-mail Messages	33
Printing Still Images (ImageBrowser)	36
The Print Window	38
Adjusting Image Quality and Printing (Exif 2.2 Compliant)	39
Selecting the Print Mode and Number of Copies (DPOF Print Settings)	41
Merging Panoramic Images (PhotoStitch)	42
Exporting Images	44
Adding Still Images from Your Computer to the Memory Card	46
Adding Still Images to the Memory Card	46
Adding Sample Images to the Memory Card	47
Customizing Your Camcorder with the My Camera Settings	49
Displaying the My Camera Window	49
My Camera Window	51
Saving the My Camera Settings to the Camcorder	52
Adding Still Images to the My Camera Window	53
Uninstalling the Software	54
Troubleshooting	55

Read This First

Disclaimer

- While every effort has been made to ensure that the information contained in this guide is accurate and complete, no liability can be accepted for any errors or omissions. Canon reserves the right to change the specifications of the hardware and software described herein at any time without prior notice.
- No part of this guide may be reproduced, transmitted, transcribed, stored in a retrieval system, or translated into any language in any form, by any means, without the prior written permission of Canon.
- Canon makes no warranties for damages resulting from corrupted or lost data due to mistaken operation or malfunction of the camcorder, the software, memory cards (MultiMediaCards or SD Memory Cards), personal computers, or peripheral devices, or due to use of a memory card not formatted by a Canon camcorder.

Trademark Acknowledgments

- Canon is a registered trademark of Canon Inc.
- Macintosh and Mac OS are trademarks of Apple Computer Inc., registered in the United States and other countries.
iPhoto and QuickTime are trademarks of Apple Computer, Inc.
- Other names and products not mentioned above may be registered trademarks or trademarks of their respective companies.

Copyright © Canon Inc. 2004 All rights reserved.

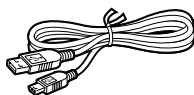
Safety Precautions

Do not play the supplied CD-ROM(s) in any CD player that does not support data CD-ROMs. Playing the CD-ROM(s) in an audio CD player (music player) could damage the speakers. It is also possible to suffer from hearing loss from listening with headphones to the loud sounds of a CD-ROM played on a music CD player.

Checking Supplied Accessories

Use the following accessories to download recorded images from a memory card to your computer.

- IFC-300PCU USB Cable



- DIGITAL VIDEO SOLUTION DISK For Macintosh



The explanations in this manual use mainly Mac OS X version 10.2 screen shots.

System Requirements

OS:	Mac OS 9.0-9.2, Mac OS X (version 10.1/10.2)
Computer Model:	Computers that come with above OS preinstalled and have built-in USB ports.
CPU:	PowerPC
RAM:	Mac OS 9.0-9.2: 64 MB or more of application memory Mac OS X (version 10.1/10.2): 128 MB or more
Interface:	USB
Free Hard Disk Space:	Canon Utilities – ImageBrowser 120 MB or more – PhotoStitch 30 MB or more
Display:	800 × 600 pixels/32,000 colors or better, 1024 × 768 pixels/32,000 colors or better is recommended



- Proper operation is not guaranteed on a user-built PC.
- Proper operation is not guaranteed on any particular system, even if it meets the requirements outlined above.
- ImageBrowser and PhotoStitch do not operate on disks formatted with the Unix File System (UFS).
- A CD-ROM drive is required to install the software.
- Not all operations performed with a connection to a USB 2.0 compatible board can be guaranteed.

What Can Be Accomplished with the Software

This topic introduces the main features of the software programs contained on the DIGITAL VIDEO SOLUTION DISK For Macintosh.

E

■ ImageBrowser (📖 14)

- Downloading images recorded onto a memory card to your computer.
- Categorizing and organizing large volumes of images.
- Creating mail attachments from images.
- Exporting images.
- Adding a title and a comment, and printing still images.
- Printing indexes.

■ MovieEdit Task (📖 28)

- Linking images.
- Inserting text and background music, and adding effects.
- Changing the size or file format of selected movies and saving them as new files.

■ PhotoStitch (📖 42)

Merging panoramic images.

This instruction manual explains how to install the software, what you can do with the main features and how to operate them. For more detailed operational instructions, refer to the Help menu of each software program.

Installing the Digital Video Software



Before you connect the camcorder to the computer with the USB cable for the first time, you must install the Digital Video Software.



Mac OS X (version 10.1/10.2) Users:

Your digital video camcorder is equipped with the standard Picture Transfer Protocol (PTP). This protocol enables you to download images by simply connecting the camera to a computer with the USB cable (using software such as iPhoto or Image Capture preinstalled on Mac OS X). However, please note that there are several limitations to downloading images with this method. To avoid these problems, install ImageBrowser to download images.

- It may take a few minutes, after connecting the camcorder, until you can download images.
- Only AVI* movie files can be downloaded. Thumbnails cannot be downloaded.
 - * Two files are created in the camcorder (for example: [MVI_0001.AVI] and [MVI_0001.THM]). [MVI_0001.THM] files cannot be downloaded but movies can still be played back on the computer.
- Mac OS X version 10.2
 - You may not be able to download images with iPhoto if the memory card contains an enormous volume of images (approx. 900 or more).
 - The Exif* version may change to 2.1 and image information may be modified when downloading images with Image Capture. To download images without any information changes, use the following procedures:
 1. Connect the camcorder to the computer and prepare it to transfer data.
 2. Start Image Capture.
 3. In the screen that appears, click [Options].
 4. Remove the checkmark from [Embed Colorsync profile] in the [Download Options] tab and click [OK].
 - * Images shot with camcorders complying with Exif Print incorporate shooting settings information, such as the shooting conditions and program AE mode, along with the image data.

- 1. Close any programs that are running.**
- 2. Set the DIGITAL VIDEO SOLUTION DISK For Macintosh in the computer's CD-ROM drive.**

- 3. Mac OS 9.0-9.2:** Double click the CD-ROM icon, followed by the [Mac OS 9] and [Canon Digital Video Installer] icons.
- Mac OS X (version 10.1/10.2):** Double click the CD-ROM icon, followed by the [Mac OS X] and [Canon Digital Video Installer] icons.

The installer panel appears.

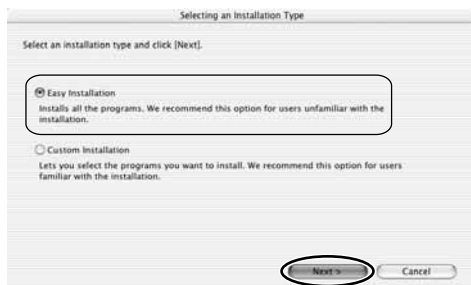
- 4. Select your language.**
- 5. Click Digital Video Software [Install].**

Installer Panel



- 6. Select [Easy Installation] and Click [Next].**

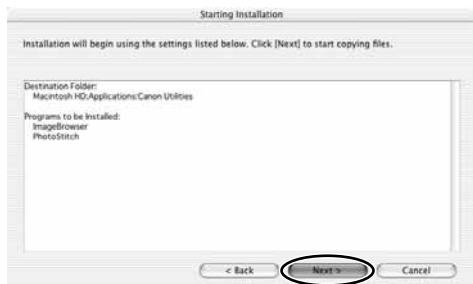
To install the software individually, select [Custom Installation].



Installing the Digital Video Software

- 7. Read the license agreement and click [Agree].**
- 8. Review the installation settings and click [Next].**

Installation starts.



- 9. When the "Installation has finished." message appears, click [OK].**



- 10. After the installation is complete, restart the computer as prompted.**

Connecting the Camcorder to a Computer

E



- Make sure the camcorder is being powered using the power adapter before connecting it to a computer.
- Be sure to install the Digital Video Software before you connect the camcorder to the computer.
- Connect the USB cable directly to one of the computer's main USB ports. The interface may not function correctly if the camcorder is connected via a USB hub.
- The connection may not operate correctly if you are using other USB devices, excluding USB mice or keyboards, at the same time. If this occurs, disconnect the other devices from the computer and try reconnecting the camcorder.
- Do not connect two or more camcorders to the same computer via the USB interface. The connections may not operate correctly.
- **Never allow the computer to go into standby (sleep) mode while a camcorder is connected via the USB interface. If it does happen, never disconnect the USB cable. Try to awaken the computer with the camcorder in the connected state. Some computers will not awaken properly if you disconnect the camcorder while they are in standby mode. Please refer to your computer manual for instructions regarding its standby mode.**

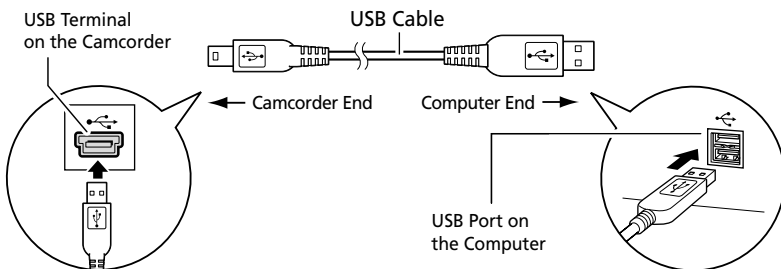


- Refer to your computer manual for the location of the computer's USB ports.
- See your camcorder instruction manual for connecting instructions.

- 1. Insert a memory card containing images into the camcorder.**
- 2. Connect the power adapter to the camcorder.**
- 3. Turn the POWER switch to PLAY (VCR) and move the TAPE/CARD switch to CARD.**

Wait until the card access indicator stops flashing.

- 4. Attach the supplied USB cable to the computer's USB port and the camcorder's USB Terminal.**



Downloading Images (ImageBrowser)

Below explains the procedure for connecting a camcorder to a computer using the USB cable.

For connecting a PC card reader/writer, see *Using a PC Card Reader/Writer* (📖 19).



- Observe following precautions when the camcorder's card access indicator is flashing (the camcorder is reading or writing from or to the memory card). Failure to do so may cause memory card data to become corrupted.
 - Do not open the memory card cover, remove the memory card or detach the USB cable.
 - Do not turn off the camcorder or the computer.
 - Do not change the position of the POWER switch or the TAPE/CARD switch.
- Format the memory card with the camcorder or from the Camera Settings Window (📖 21).
- Images recorded onto the memory card or downloaded to the hard disk are important original data files. Create a copy of the file first before working on it on your computer.

Starting ImageBrowser

Mac OS 9.0-9.2

1. Connect the camcorder to the computer (📖 13).

- ImageBrowser starts and the ImageBrowser Automation Wizard dialog appears. In the ImageBrowser Automation Wizard dialog, you can select the action that is carried out after ImageBrowser starts.
- A dialog with the previously selected automated settings will appear the next time you start ImageBrowser.
 1. To use these settings unchanged, click the [Start] button.
 2. To do nothing, click [Cancel].
 3. To change the settings, click [Settings Change], select the action and click [OK].

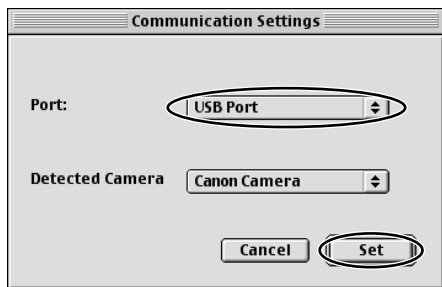
2. Select [Display Images] and click [OK].

The Communications Settings window appears. This window only appears the first time the camcorder is connected.

3. Confirm that [USB port] and [Canon Camera] are selected and click [Set].

The Camera Window opens, displaying the camcorder images as thumbnails (small images).

E



How to Set ImageBrowser to Not Start Automatically

1. Click the Apple menu and select [Control Panels] and [Canon ImageBrowser Auto Launch].

The Settings for USB Connection dialog will display.

2. Click [The application program below will start] to remove the check mark.

3. Click the close box at the upper left to close the dialog.

ImageBrowser will cease to start automatically thereafter.

Click here to close the dialog.



Downloading Images (ImageBrowser)

Mac OS X (version 10.1/10.2)



Do not connect the camcorder while the Classic environment is started. Likewise, do not start the Classic environment while the camcorder is connected.

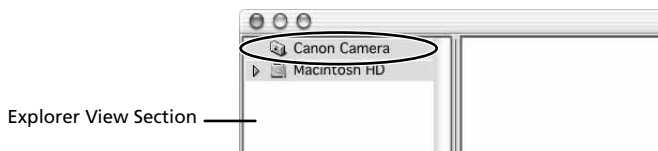
1. Connect the camcorder to the computer (13).
2. Double-click the [Canon ImageBrowser] icon on the desktop.

If the Canon ImageBrowser icon does not appear on the desktop, double-click the [Canon Utilities] folder on the drive on which the program was installed, followed by the [ImageBrowser] folder and [ImageBrowser] icon.



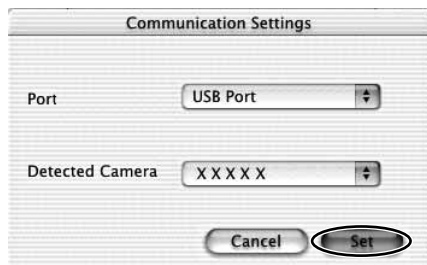
3. Click [Canon Camera] in the Explorer View section.

The Communications Settings window appears. This window only appears the first time the camcorder is connected.



4. Confirm that [USB port] and a Canon camcorder are selected and click [Set].

The Camera Window opens, displaying the camcorder images as thumbnails (small images).

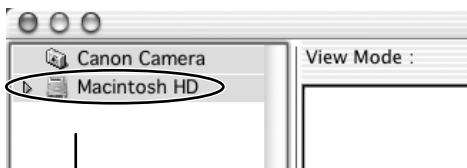


Downloading Images to the Computer

E

1. Mac OS 9.0-9.2: Select [Macintosh HD] in the explorer view section.

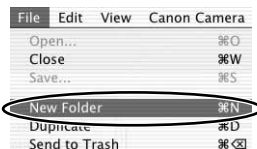
Mac OS X (version 10.1/10.2): Select the [🏠 (user name)] subfolder of the [Users] folder in [Macintosh HD].



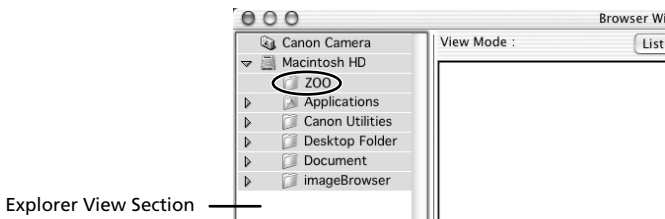
Explorer View Section

2. Create a new folder for saving images from the memory card in the camcorder.

Click the [File] menu and select [New Folder]. A folder with the name "Untitled" will be created. Click it to change the folder name as you wish. In this example, we will input "ZOO."



3. In the Explorer View Section, click the newly created folder.



Explorer View Section

Downloading Images (ImageBrowser)

4. Select images in the Camera window and click [DOWNLOAD].

- You can select multiple images by holding down [Shift] or [Option] + [Shift] while clicking.
- A blue frame appears around the selected image.
- Downloaded images are saved to the computer and appear in the Browser area.



To disconnect the camcorder, click the close box (Mac OS 9.0-9.2) or the red close box (Mac OS X (version 10.1/10.2)) at the upper left of the Camera Window. The Camera Window will close.



- Double-clicking an image on the camera window imports it to the computer.
- You can also download images to the computer by dragging them from the Camera window and dropping them on the Browser area or the Explorer View Section.

Using a PC Card Reader/Writer

The basic operations of ImageBrowser are the same as when you connect the camcorder to the computer. Follow the procedure below to open the Camera Window.

For instructions on how to connect the PC Card Reader/Writer, please refer to the PC Card Reader Manual.

1. Insert a memory card into the reader.

Mac OS X (version 10.1/10.2): If a dialog appears, click the red close box.

2. Double-click the [Canon ImageBrowser] icon on the desktop.

- ImageBrowser starts.
- If the icon does not appear on the desktop, double-click the folder in which you installed the program, followed by the [Canon Utilities] and [ImageBrowser] folders and the [ImageBrowser] file.



3. Double-click the [CANON_DV] and [DCIM] folders in the Explorer View Section.

The Camera Window opens, displaying the memory card images as thumbnails (small images).

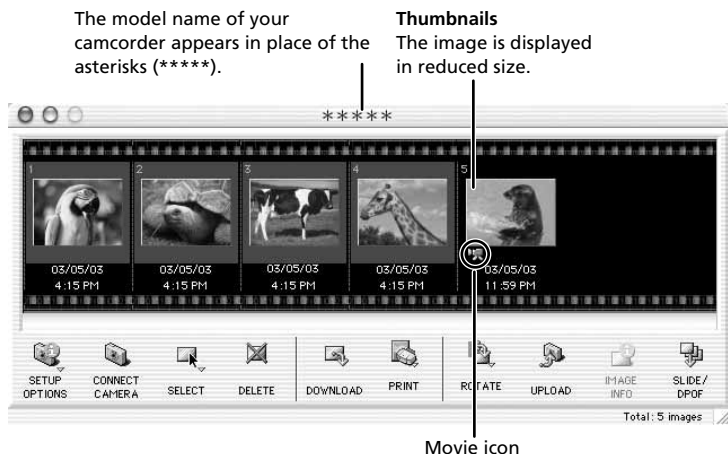


Explorer View Section

Using Other ImageBrowser Functions

Camera Window

The Camera Window opens when a connection to a camcorder is initiated. Images will be displayed as thumbnails (small images). Movies are displayed with the first scene as a still image, indicated with a movie icon. Buttons are activated when an image is selected.



[SETUP OPTIONS]:

Adjusts the connection settings and camcorder settings. Menu options: Camera Settings, Communication Settings and My Camera.

[CONNECT CAMERA]:

Reconnects the camcorder to the computer.

[SELECT]:

Selects images. Menu options: Select All and Deselect All.

[DELETE]:

Deletes selected images.

[DOWNLOAD]:

Downloads selected image to the computer.

[PRINT]:

Prints selected still images. Menu options: Layout printing and Index printing.

[ROTATE]:

Rotates still images. Menu options: 90 degrees right, 90 degrees left and 180 degrees.

[UPLOAD]:

Adds selected still images to the memory card.

[IMAGE INFO]:

Displays image information (such as shooting date/time and image size).

[SLIDE/DPOF]:

The [SLIDE] function cannot be used. [DPOF] allows you to select the print order settings.

Camera Settings Window

You can adjust the date, time and owner settings in the Camera Settings window using the computer when the camcorder is connected. You can also check the remaining memory card capacity.

1. In the Camera Window, click the [SETUP OPTIONS] button and select [Camera Settings] from the displayed menu.
2. Check or change the settings.
Click [OK] to close the window.

Input a camcorder owner name here
(up to 31 characters).

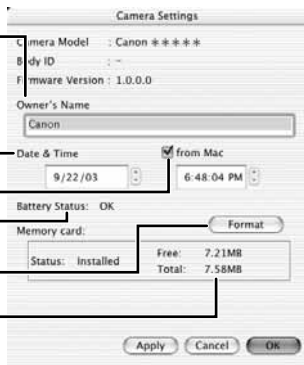
Set the date and time here.

Check this box to synchronize the camcorder
to the computer's date and time settings.

Check the power status here.

Click this to format the memory card
in the camcorder.

Check the remaining memory card
capacity here.



Using Other ImageBrowser Functions

Browser Window

This section describes the various parts of the Browser Window display.

Explorer View Section

Displays the disks and folders that you can use on your computer.

If you click the disclosure triangle on the left edge of the display, you can switch between collapsing and expanding the contents of that folder.

Browser Area

Displays the images contained in the selected folder.

You can select to display thumbnails or preview images.

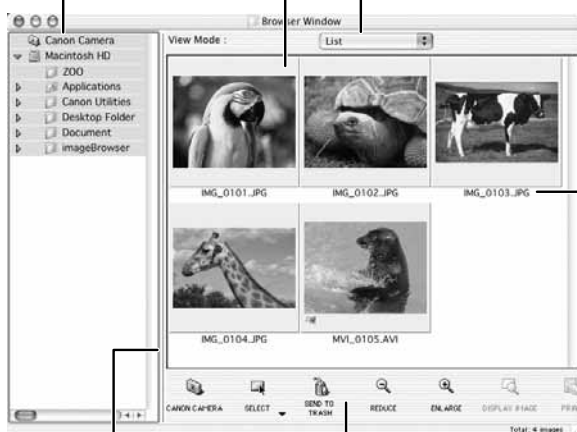


Image Name

This is where the file name of each individual image is displayed.

You can drag this line to change the position of the boundary between the Explorer View Section and the Browser Area.

Control Panel

This area contains buttons that allow you to perform a variety of functions.

You can drag this part of the frame to change the size of the Browser Window.

[CANON CAMERA]: Displays the Camera Window.

[SELECT]: Selects all images in a folder. Menu options: Select All and Deselect All.

[SEND TO TRASH]: Deletes selected images.

[REDUCE]: Reduces the size of the thumbnails in the Browser Area.

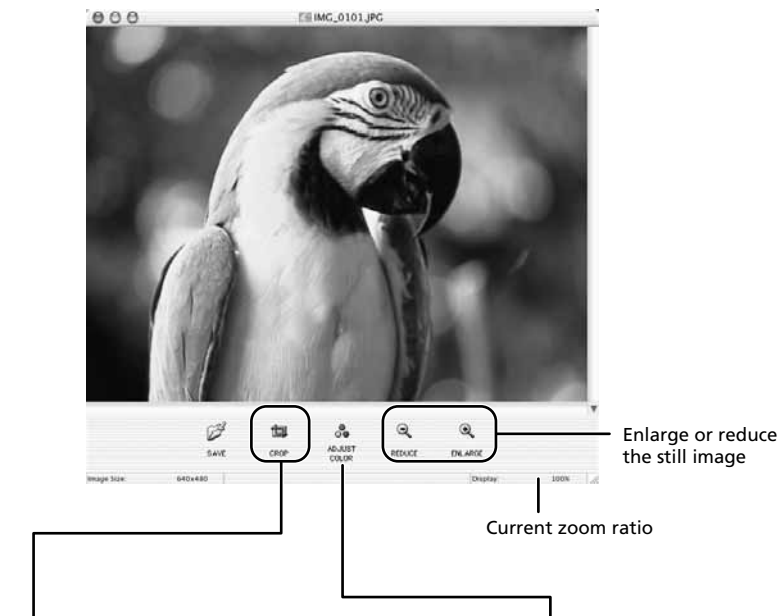
[ENLARGE]: Enlarges the size of the thumbnails in the Browser Area.

[DISPLAY IMAGE]: Displays a still image in the Image Viewer window, or opens a window for playing back a movie.

[PRINT]: Prints selected still images. Menu options: Layout printing and Index printing.

Image Viewer Window

The Image Viewer window appears when you double-click a still image, or when you select a still image and click [DISPLAY IMAGE].



CROP

You can extract a part of the still image.

1. Click on the still image and drag to form a rectangular frame.
You can move or change the size of the frame.
2. Click this button to extract the area within the frame.
The extracted part of the still image appears.

ADJUST COLOR

Click here to display the Adjust Color window to adjust hue, saturation and lightness of the still image by dragging the respective slide.

Using Other ImageBrowser Functions

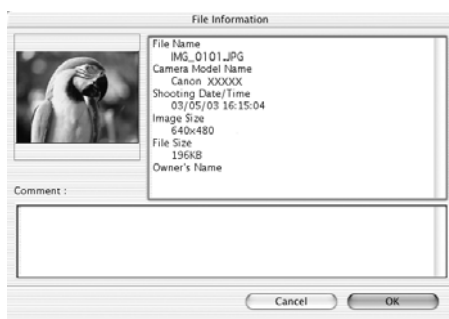
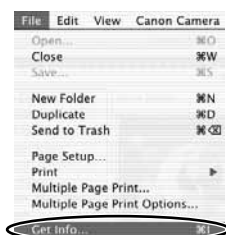
Displaying the Image Information

You can check the image information such as shooting date/time or file size.

1. Select the image of which you wish to display the information.

2. From the [File] menu, select [Get Info].

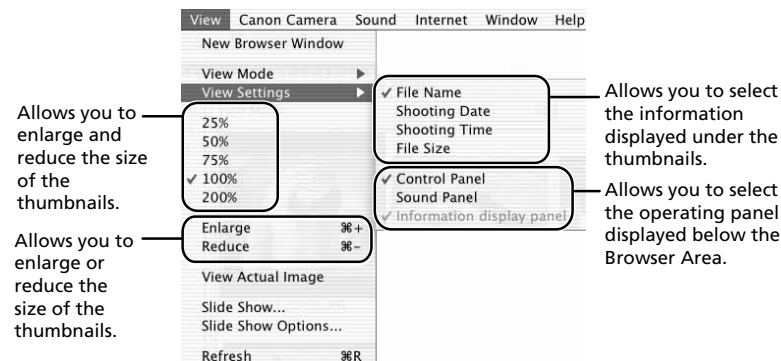
- The File Information window appears.
- If you wish to add a comment, input it in the [Comment] area.
- Click [OK] to close the window.



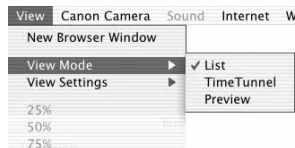
- It depends on your camcorder model which image information will be displayed.
- When you modify and save an image using another program, shooting information or comments may be lost.

[View] Menu

You can select the display settings of the Browser Area by selecting [View Settings] from the [View] menu.



If you select [View Mode] followed by [Preview] from the [View] menu, you can display a preview of an image in the Browser Area. To stop displaying the preview image, select [View Mode] followed by [List] in the [View] menu.



Displaying Images in TimeTunnel

This program displays images in the order of the creation date.

1. In the [View] menu, select [View Mode] followed by [TimeTunnel].

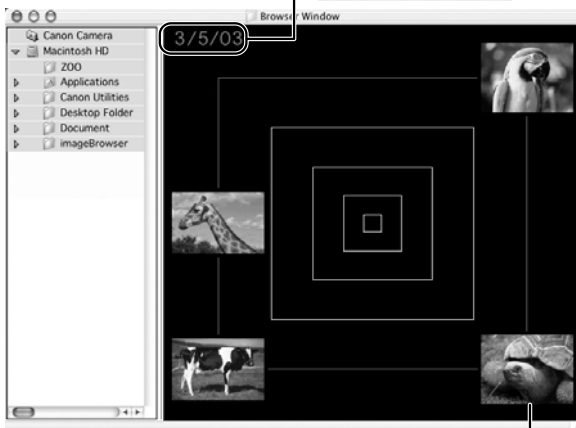
The image information will be displayed when you point at an image.



The date/time at which the images were shot appears on the red line. You can change this date/time by double-clicking it on the display. A window similar to the one below appears. Specify the new date/time.



Move the slider up or down to move backward or forward in time.



Tool Panel

Makes the TimeTunnel rings octagonal.

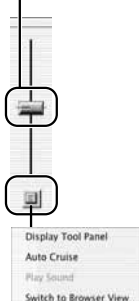
Double-click a thumbnail to display it in another window.



Allows you to specify the date for the images displayed.

Makes the TimeTunnel look curved.

Changes the number of TimeTunnel rings.



Click to display the control panel.

[Display Tool Panel]:
Select to display or hide the tool panel.

[Auto Cruise]:
Enables or disables [Auto Cruise]. When [Auto Cruise] is active, the time movement continues even after you have moved and released the bar.

[Switch to Browser View]:
Exit TimeTunnel, and returns to the previous screen.

Playing Back Movies From a Memory Card

E

In the Camera Window and Browser Area, movies are displayed with the first scene as a still image with a movie icon (). When you double-click the thumbnail in the Browser Area, QuickTime Player starts and plays back the movie.

- 1. In the Browser Area, double-click a thumbnail with a (movie) icon.**

QuickTime Player starts.



- 2. Click the ► (play) button in QuickTime Player.**

The movie will be played back.



Macintosh

Editing Movies (MovieEdit Task) (Mac OS X Only)

You can link images, insert text and background music, and add effects.

1. Select images in the Browser area.
2. From the [Edit] menu, select [Movie Edit].



3. Arrange images and click [2. Effect].

- To change the order of images, select an image and click [Move Left] or [Move Right].
- Operational instructions are displayed in the upper section of the window.

Plays back the movie being edited.

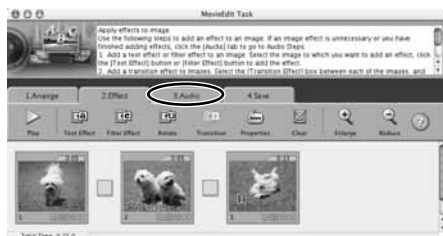
Storyboard Area
Displays thumbnails of the selected images. The images will be linked from left to right.

Transition Box
Displays the symbol of the transition effect between linked images.



4. Apply effects to the images and click [3. Audio].

To set a transition effect, you need to select a transition box in the Storyboard Area.



5. Set the audio and click [4. Save].

You can add an MP3, AIFF or WAV file as audio.



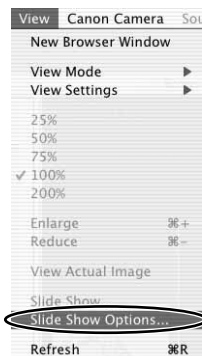
6. Select a file format and click [Save].

- Select the destination folder, input the file name and click [Save].
- To exit MovieEdit Task, from the [MovieEdit Task] menu, select [Quit MovieEdit Task].



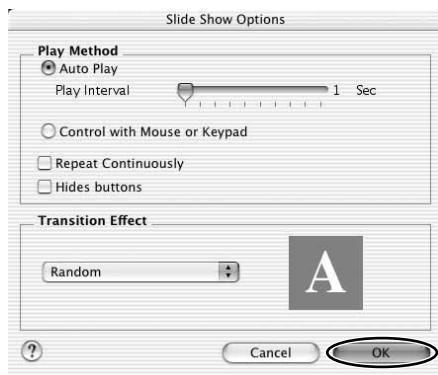
Running a Slide Show

1. From the [View] menu, select [Slide Show Options].



2. Select the slide show settings and click [OK].

- [Auto Play]: Moves to the next still image automatically. Select the interval by sliding the control under [Play Interval] (from 1 to 30 seconds).
- [Control with Mouse or Keypad]: Advances the slide show manually with the mouse or keyboard.
- [Repeat Continuously]: Runs the slide show in a loop.
- [Hide buttons]: Hides the buttons during the slide show.
- [Transition Effect]: Select the transition effect to be used when moving from one slide to another. When you select an effect, you can check the effect in the preview window.



3. Select the images and select [Slide Show] from the [View] menu.

Click  on the lower right of the screen to end the slide show.

Adding Sound to a Still Image

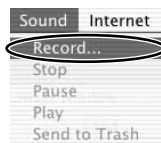
To add sound to still images, use the MAC OS recording function. Depending on the computer, you may need to connect peripherals such as microphones. Check if your computer settings allow recording. The sound cannot be played back on the camcorder.

E

Adding Sound to a Still Image

1. In the Browser Area, select a still image and select [Record] from the [Sound] menu.

The recording window appears.




2. Click and start recording when the [Save] button is enabled.



3. Click [Save] to stop recording.

-  appears on the still image.
- The sound file will be copied in AIFF format (extension ".AIF") to the same folder as the still image.



To remove sound from a still image, select [Send to Trash] from the [Sound] menu.  disappears and the copied sound file will be deleted.

Adding Sound to a Still Image

Playing Back the Sound

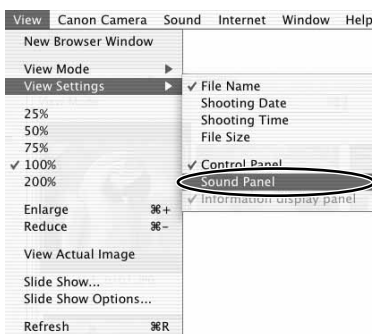
In the Browser Area, select the still image with the sound attachment and select [Play] from the [Sound] menu.

- The sound will be played back.
- You can control playback by selecting [Pause] or [Stop] from the [Sound] menu.

Using the Sound Panel

You can use the sound panel to record, playback and adjust the volume.

1. From the [View] menu, select [View Settings] and select [Sound Panel] from the displayed menu.



The sound panel appears.



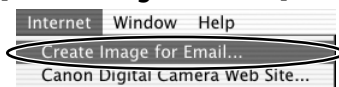
2. In the Browser Area, select the still image with the sound attachment.

You can record or play back the sound, adjust the volume, or stop or pause playback.

Attaching Images to E-mail Messages

You can attach selected images to an E-mail message.

1. Select the images you wish to send in the Browser Area.
2. From the [Internet] menu, select [Create Image for Email].

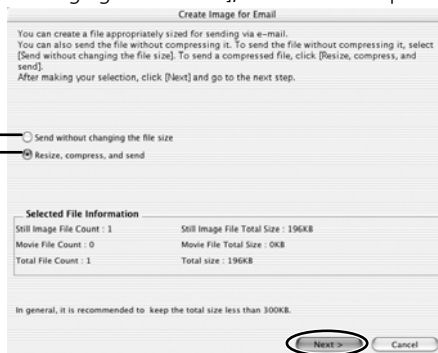


3. Specify the image size and click [Next].

When you select [Send without changing the file size], move on to step 5.

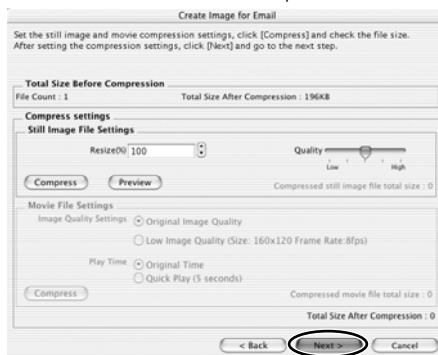
Select this if you do not wish to reduce the size of the still image.

Normally, select this option.



4. Specify the reduction ratio and image quality and click [Next].

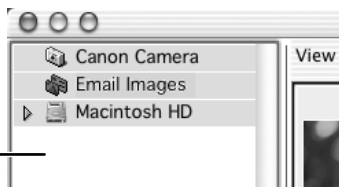
- [Resize (%)] : Select the reduction ratio relative to the original size of the image.
- [Quality] : Select the image quality. The lower the quality, the rougher the image becomes, but the size of the file also becomes smaller.
- [Compress] : Use it to check the file size when you actually compress the image. The file size appears next to "Total Size After Compression".



Attaching Images to E-mail Messages

5. Select whether you wish to start your e-mail software and click [Finish].

- If you have selected [Start email application after closing], your e-mail software starts automatically. Open a new e-mail message and attach the image. With some types of e-mail software, you can attach images to e-mail messages simply by dragging them from the Browser Area to the new message window.
- Click [Preview] to check the changed image.
- The image will be saved to the [Email Images] folder in the explorer view section.



Explorer View Section



- You can set the e-mail software to start automatically in step 5. Note that some e-mail software may not start automatically.

Mac OS 9.0 - 9.2: From the Apple menu, select [Control Panel], followed by [Internet] and click the [Email] tab. Change the setting in the displayed window.

Mac OS X (version 10.1/10.2): From the Apple menu, select [System Preferences], followed by [Internet] and click the [Email] tab. Change the setting in the displayed window.

- The images in the [Email Images] folder are saved in the following location:

Mac OS 9.0 - 9.2: Open the folder you installed ImageBrowser or the [Document] folder, followed by [ImageBrowserUserData] and [Mail].

Mac OS X (version 10.1/10.2): Open the [Users] folder, followed by [User login name], [Library], [Preferences], [ImageBrowserUserData], and [Mail].

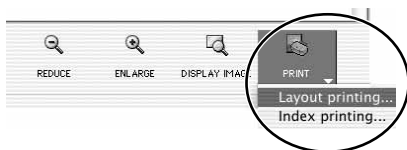
Printing Still Images (ImageBrowser)

You can select the layout when printing still images. Movies cannot be printed.



Do not open the memory card cover, remove the memory card, detach the USB cable or turn off the camcorder while data is being transferred to the printer (when the camcorder's card access indicator is flashing). Doing so may cause memory card data to become corrupted.

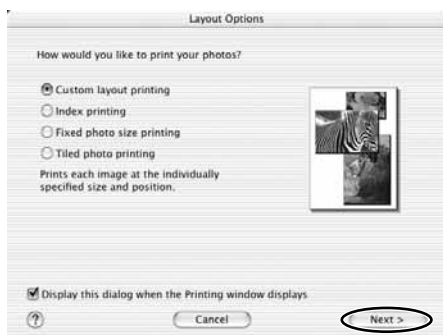
- 1. Select the still image(s) you wish to print in the Browser Window.**
- 2. Click [PRINT] and select [Layout printing] from the displayed menu.**
 - The Layout Options window and Print window appears.
 - If the Layout Options window does not appear, display it by clicking [LAYOUT OPTIONS] in the Print window.



Print Window

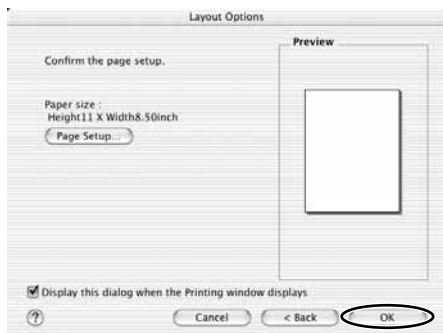
3. In the Layout Options window, select a layout and click [Next].

The Custom Layout printing option allows you to freely change the size and position of the still images for printing. The other options allow you to print an index or print onto Canon perforated paper. Canon perforated paper cannot be selected with Mac OS X (version 10.1/10.2).



4. Select a paper size and click [OK].

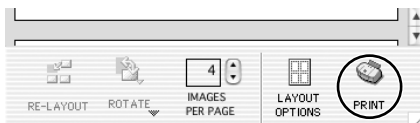
- The Print window opens, allowing you to change the layout and printing settings.
- The settings available will vary according to the type of layout selected in Step 3.



Printing Still Images (ImageBrowser)

5. Click [PRINT] in the Print window.

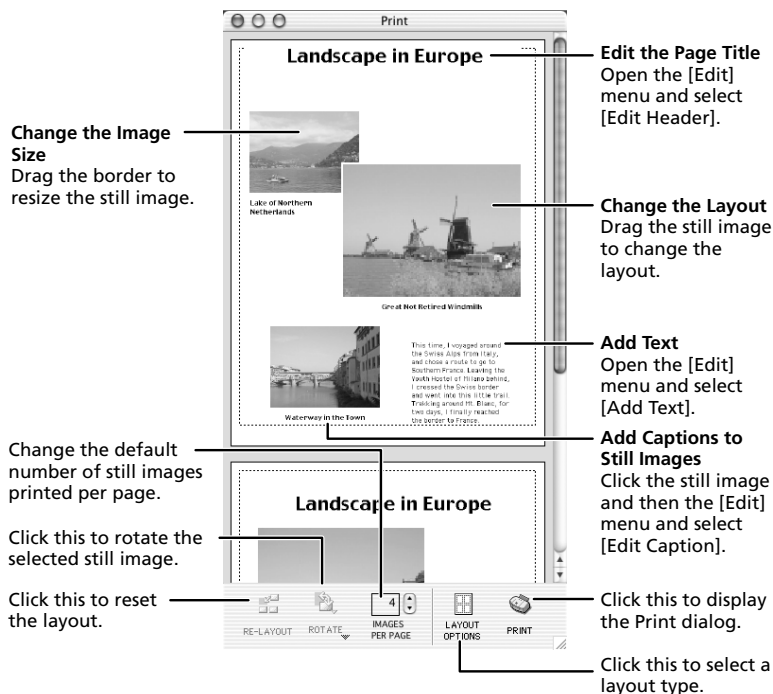
The Print dialog appears.



6. Click [Print].

Printing starts.

The Print Window



Adjusting Image Quality and Printing (Exif 2.2 Compliant)

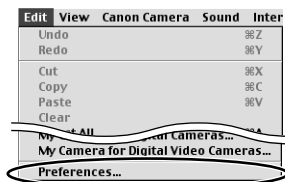
ImageBrowser allows you to print images with image quality adjustments. ImageBrowser also supports the Exif 2.2 standard (or Exif Print).



- Still images shot with camcorders complying with the Exif 2.2 standard incorporate shooting settings information, such as the shooting conditions and scene mode, along with the image data. The Exif Print adjustment protocol uses this information to correct the image quality more accurately to reflect the shooting settings.
- When printing from ImageBrowser, the image quality adjustment settings are active for all still images.

Mac OS 9.0-9.2

1. Click the [Edit] menu in ImageBrowser and select [Preferences].



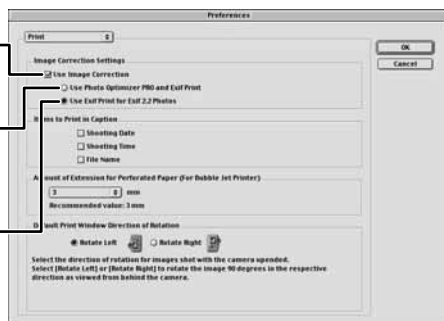
2. In the Preferences window, select [Print], set the image quality settings and click [OK].

See *Printing Still Images* for the next steps (36).

A check mark must be placed here to automatically correct the image quality.

Select this option to automatically correct images shot with Exif 2.2 compliant camcorders and other images.

Select this option to automatically correct only images shot with Exif 2.2 compliant camcorders.



Printing Still Images (ImageBrowser)

Mac OS X (version 10.1/10.2)

1. Click the [ImageBrowser] menu in ImageBrowser and select [Preferences].



2. In the [Preferences] window, select [Print], set the image quality settings and click [OK].

See *Printing Still Images* for the next steps (📖 36).

A check mark must be placed here to automatically correct the image quality.

Select this option to automatically correct images shot with Exif 2.2 compliant camcorders and other images.

Select this option to automatically correct only images shot with Exif 2.2 compliant camcorders.



Selecting the Print Mode and Number of Copies (DPOF Print Settings)

You can select the image and the number of prints for automatic printing on a DPOF*-compliant printer. You can set the DPOF print settings also on the camcorder.

*Digital Print Order Format



When you are using a SD memory card, make sure the protect switch is set to allow recording.



The Edit Slide/DPOF window allows print settings on up to 998 still images. With some camcorders, DPOF print settings are limited to a maximum of 200 still images. In that case, all DPOF print settings on the 201st still image and onward will be erased.

1. Click (SLIDE/DPOF) in the Camera Window.

The Edit Slide/DPOF window appears.



2. Select the still image you wish to print and the number of copies.

- [Standard Print]: Prints selected images in the specified number of copies. Use the arrows next to the boxes below the image to select the number of copies.
- [Index Print] and the option [Titles] of the [Edit] menu (printing of date and file number) are not supported by the camcorder.



3. Click [Save to Camera].

The DPOF print settings will be saved to the memory card.

Merging Panoramic Images (PhotoStitch)

You can merge a series of overlapping images into a single, seamless panorama. PhotoStitch automatically arranges still images recorded with the camcorder's Stitch Assist mode in their correct order and orientation, making it easy to merge them. Please refer to the Camcorder Instruction Manual to learn how to record in Stitch Assist mode.

The following instruction explains how to merge still images recorded in Stitch Assist mode with the camcorder.



Still images recorded in Stitch Assist mode with Wide-converter or Tele-converter attached cannot be merged correctly.

1. Click the green stitch mark in the Camera Window.



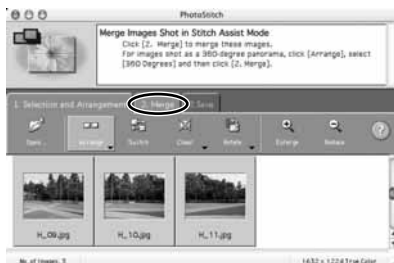
2. In the confirmation window, click [Yes].

PhotoStitch starts.



3. Arrange the order of the images and click [2. Merge].

Operational instructions are displayed in the upper section of the window.



4. Click [Start].



5. Select [3. Save] and then click [Save].

- Select the destination folder, input the file name and click [Save].
- In the View the Saved Image? window, click [Yes]. The Viewer window opens and displays the merged image.
- To exit PhotoStitch, from the [PhotoStitch] menu, select [Quit PhotoStitch].



- You can record the surroundings in 360 degrees, and stitch them together later to form a 360-degrees cylinder. (In [1. Selection and Arrangement], select [Arrange] and [360 degrees].) By saving this stitched image in QuickTime VR format, you can then get a virtual view of the surroundings by manipulating the mouse.
- For more details, please refer to the PhotoStitch Help menu.

Exporting Images

You can change the size, resolution or file format of selected still images. You can also export selected movie and still image information to a text file, or copy and rename movies and still images.

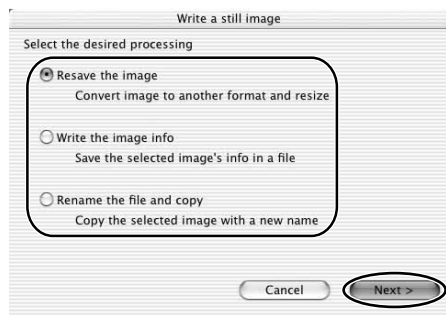
1. Select images in the Browser Area.

2. From the [Edit] menu, select [Write a still image].



3. Select the export type and click [Next].

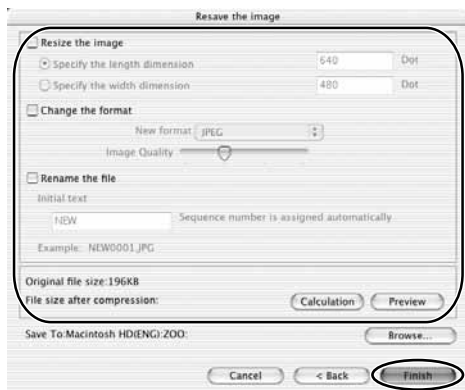
- [Resave the image]: Converts still images to another file format, resizes and saves them as new files. You can select the file format from JPEG, PICT, TIFF, and BMP. You can also specify a prefix to be added to the exported images.
- [Write the image info]: Exports selected movie and still image information to a text file.
- [Rename the file and copy]: Renames and copies selected movies and still images. You can also specify a prefix to be added to the exported images.



4. Specify the export settings and click [Finish].

The options for the export settings vary according to the export type. Follow the instructions displayed in the window. In each case, specify the destination folder and file name for the images to be exported.

E



Adding Still Images from Your Computer to the Memory Card

You can add still images from the computer to a memory card. You can also add sample images for card mix from the DIGITAL VIDEO SOLUTION DISK For Macintosh.



- Still images in EXIF-JPEG, TIFF, PICT, and Windows bitmap format can be added to a memory card.
- You can also add still images to a memory card by using drag and drop to move it from the browser area to the Camera window.

Adding Still Images to the Memory Card

1. In the Camera Window, click [UPLOAD].

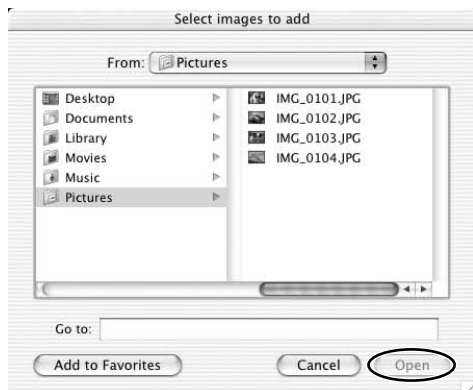


2. Select the still image you wish to add and click [Open].

You can check the selected still image.

Mac OS 9.0-9.2: Click [Show Preview].

Mac OS X (version 10.1/10.2): Click the file name.



3. In the Add Image window, select the image size and click [Add].

- The selected images will be recorded to the memory card.
- When recording is complete, the images will appear in the Camera Window.

Adding Sample Images to the Memory Card

You can add sample images for card mix to the memory card. 4 images for CARD CHROMA and CARD ANIMATION, and 2 images for CARD LUMINANCE and CAMERA CHROMA are provided on the DIGITAL VIDEO SOLUTION DISK For Macintosh.

1. Insert the DIGITAL VIDEO SOLUTION DISK For Macintosh to the computer's CD-ROM drive.
2. In the Camera Window, click [UPLOAD].



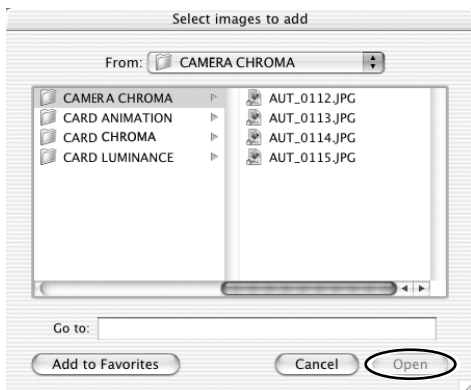
Adding Still Images from Your Computer to the Memory Card

3. Double-click the CD-ROM icon, followed by the [DVC CARD IMAGE] folder.

The folders [CAMERA CHROMA], [CARD ANIMATION], [CARD CHROMA] or [CARD LUMINANCE] appear.



4. Open the [CAMERA CHROMA], [CARD ANIMATION], [CARD CHROMA] and [CARD LUMINANCE] folder, select the image you wish to copy to the camcorder and click [Open].



5. In the Add Image window, click [Add].

- The selected images will be recorded to the memory card.
- When recording is complete, the images will appear in the Camera Window.

Customizing Your Camcorder with the My Camera Settings

The start-up image, start-up sound, operation sound, self-timer sound and shutter sound are called the My Camera Settings.

ImageBrowser already contains several My Camera Settings which can be selected in theme sets or individually. The “Animal” theme, for example features and animal in the start-up image and animal calls in each of the sound files. The files all begin with the same word (e.g. “Animal”, “Baseball”).

You can use the pre-recorded My Camera Settings (□ 52) or add still images to the My Camera Settings (□ 53)



Observe following precautions while the My Camera Settings are saved to the camcorder.

- Do not open the memory card cover or remove the memory card.
- Do not detach the USB cable.
- Do not turn off the camcorder or computer.
- Do not change the position of the POWER switch or TAPE/CARD switch.

Displaying the My Camera Window

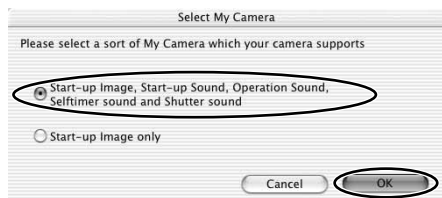
1. From the [Edit] menu in the Browser Window, select [My Camera].

The Select My Camera window appears.



Customizing Your Camcorder with the My Camera Settings

- 2. Select [Start-up Image, Start-up Sound, Operation Sound, Selftimer Sound and Shutter Sound] and click [OK].**



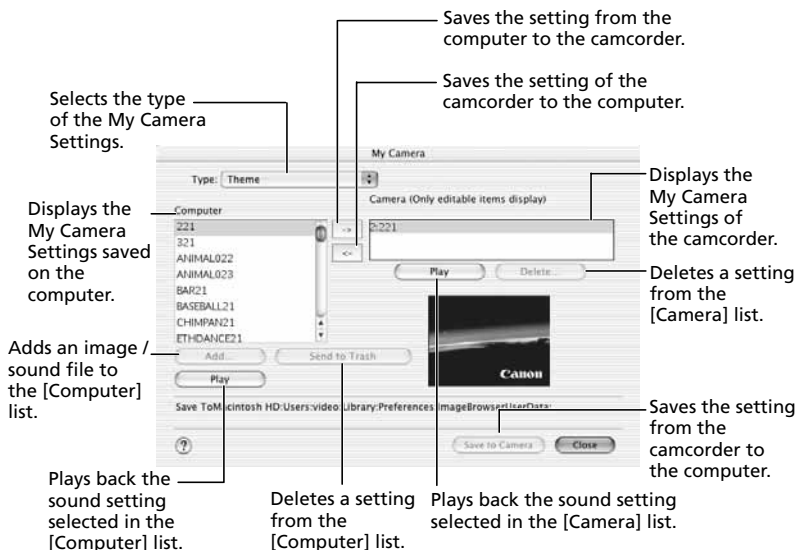
- 3. Click [View Camera] to display the My Camera Settings of the camcorder.**



Alternatively, you can display the My Camera window from the Camera Window by clicking [SETUP OPTIONS] and selecting [My Camera] from the displayed menu.

My Camera Window

E

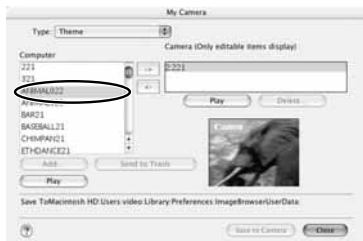


Customizing Your Camcorder with the My Camera Settings

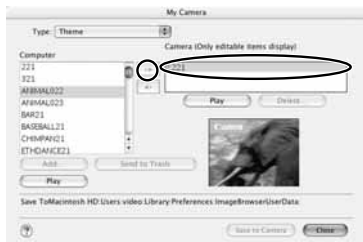
Saving the My Camera Settings to the Camcorder

1. In the My Camera window, select the theme set you wish to save to the camcorder in the [Computer] list.

- To change the settings individually, select the setting type in the [Type] list.
- A window appears when you select a theme set and plays back the start-up, operation, self-timer and shutter sound.



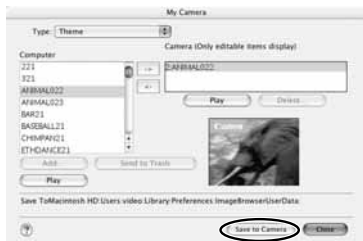
2. Select the setting you wish to replace in the [Camera] list and click [→].



3. On the confirmation window, click [OK].

The selected setting replaces the old setting and appears in the [Camera] list.

4. Click [Save to Camera].



5. On the confirmation window, click [OK].

If you wish to use this setting on the camcorder, change the My Camera Setting on the camcorder itself. Refer to the Camcorder Instruction Manual for details.

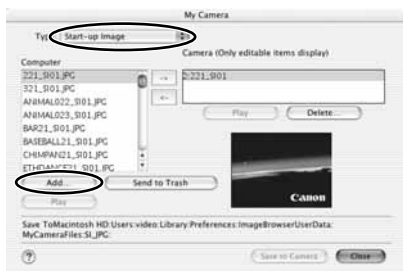
Adding Still Images to the My Camera Window



To use still images recorded with your camcorder, you need to download them to the computer before you can add them to the My Camera Window.

1. In the My Camera window, select [Start-up Image] in the [Type] list and click [Add].

The [Select an image to add] window appears.



2. Select the still image file (JPEG) you wish to add and click [Open].

The selected file appears in the [Computer] list. You can now save the newly added file to the camcorder using the procedures described in *Saving the My Camera Settings to the Camcorder* (52).



To delete a setting, select the file and click the [Send to Trash] button below the [Computer] list.

Uninstalling the Software

Uninstall the software when you wish to delete it from your computer or when reinstallation is required to fix corrupted files.

Uninstalling ImageBrowser and PhotoStitch

Move the program's folder into the Trash to uninstall programs such as ImageBrowser and PhotoStitch.



- If the program folders contain subfolders into which images have been saved, be careful not to accidentally delete those subfolders.
- For more details on how to uninstall ImageBrowser, refer to Read Me.

Connection

❓ Camcorder is not recognized when connected to the computer.

→ Computer does not support the USB interface.

The USB interface is not supported for computer not in compliance with the following requirements. Acquire the necessary system to use the USB interface.

Requirements: Genuine Apple Computer brand computer with a built-in USB interface.

→ There is no memory card in the camcorder.

Insert a memory card into the camcorder.

→ The camcorder is not set to the correct mode.

Turn the POWER switch to PLAY (VCR) and move the TAPE/CARD switch to CARD.

→ Camcorder is not correctly connected to the computer.

Read *Connecting the Camcorder to a Computer* (📖 13) and check the connection.

Ensure that you are using the correct cable and that its connectors are in good shape.

→ If you are experiencing operational problems, detach the USB cable from the camcorder and computer and terminate the connection. Restart the computer and then reconnect the camcorder.

ImageBrowser Operation

❓ Cannot download images

→ The camcorder is not set to the correct mode.

Turn the POWER switch to PLAY (VCR) and move the TAPE/CARD switch to CARD.

❓ Image files or folders do not appear in ImageBrowser.

→ Images of folders shown in ImageBrowser and the actual file contents may be different.

Click the [View] menu and select [Refresh].



CANON INC.

U.S.A. ————— **Canon U.S.A., Inc.**
Canon Customer Care Center
Tel (US): 1-800-828-4040
(Mon.-Fri., 9 AM to 8 PM Eastern Time)

CANADA ————— **Canon Canada Inc.**
Tel (Canada): 1-800-OK-CANON (1-800-652-2666)

ASIA ————— **Canon Hongkong Co., Ltd.**
19/F., The Metropolis Tower, 10 Metropolis Drive,
Hung Hom, Kowloon, Hong Kong
Phone: 852-2170-2828
Fax: 852-2723-9684