

# Canon

## Digital Video Software

Macintosh

Version 19

E

### Instruction Manual



# Contents

<b>Read This First .....</b>	<b>3</b>
Checking Supplied Accessories .....	3
<b>System Requirements .....</b>	<b>4</b>
<b>What is Digital Video Software.....</b>	<b>5</b>
<b>Installing the Digital Video Software .....</b>	<b>6</b>
<b>Before Downloading Still Images .....</b>	<b>9</b>
Connecting the Camcorder to a Computer .....	9
CameraWindow Automatic Launch Setting .....	10
Mac OS 10.2 - 10.3 .....	10
Mac OS 10.1.5 .....	10
<b>Downloading Still Images (ImageBrowser) .....</b>	<b>11</b>
Using the Computer to Download Still Images .....	11
Auto-downloading .....	11
Applying Auto-downloading Settings .....	12
Downloading the Selected Still Images from the CameraWindow .....	15
Using a Card Reader/Writer .....	17
Using the Camcorder to Download Still Images (Direct Transfer Function) .....	17
Setting the Direct Transfer Download Destination Folder .....	18
<b>ImageBrowser Windows.....</b>	<b>20</b>
Browser Window .....	20
[Image Viewer] Window .....	24
[Trimming Dialog Box] Window .....	25
[Color Adjustment Dialog] Window .....	25
<b>Organizing Still Images .....</b>	<b>26</b>
Applying Star Rating .....	26
Specifying the Keywords.....	26
Classifying the Still Images .....	27
Sort by the Shooting Date .....	27
Sort by the Star Rating .....	29
Renaming Multiple Files .....	30
Searching for Still Images .....	31
<b>Exporting Still Images .....</b>	<b>34</b>
Changing the File Type and Save.....	34
Adding Still Images from Your Computer to the Memory Card .....	37
Adding Still Images to the Memory Card .....	37
Adding Sample Images to the Memory Card .....	38
<b>Using Various Functions .....</b>	<b>41</b>
Attaching Still Images to E-mail Messages .....	41
Running a Slide Show .....	44
Merging Panoramic Images (PhotoStitch) .....	45
Printing Still Images (ImageBrowser).....	47
Adjusting Image Quality and Printing (Exif 2.2 Compliant) .....	50
Adding Sound to a Still Image.....	51
Applying DPOF Settings .....	52
Reviewing and Changing the Settings of the Camcorder .....	54
<b>Uninstalling the Software .....</b>	<b>56</b>
Uninstalling ImageBrowser and PhotoStitch .....	56
<b>Troubleshooting .....</b>	<b>57</b>

# Read This First

**E**

## ■ Disclaimer

- While every effort has been made to ensure that the information contained in this guide is accurate and complete, no liability can be accepted for any errors or omissions. Canon reserves the right to change the specifications of the hardware and software described herein at any time without prior notice.
- No part of this guide may be reproduced, transmitted, transcribed, stored in a retrieval system, or translated into any language in any form, by any means, without the prior written permission of Canon.
- Canon makes no warranties for damages resulting from corrupted or lost data due to mistaken operation or malfunction of the camcorder, the software, memory cards (miniSD Cards), personal computers, or peripheral devices, or due to use of a memory card not formatted by a Canon camcorder.

## ■ Trademark Acknowledgments

- Macintosh and Mac OS are trademarks of Apple Computer, Inc., registered in the United States and other countries.
- iPhoto and QuickTime are trademarks of Apple Computer, Inc.
- miniSD is a trademark of SD Card Association.
- Other names and products not mentioned above may be registered trademarks or trademarks of their respective companies.

© Canon Inc. 2005 All rights reserved.

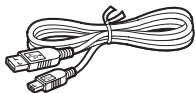
## ■ Safety Precautions

Do not play the supplied CD-ROM(s) in any CD player that does not support data CD-ROMs. Playing the CD-ROM(s) in an audio CD player (music player) could damage the speakers. It is also possible to suffer from hearing loss from listening with headphones to the loud sounds of a CD-ROM played on a music CD player.

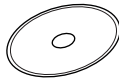
## Checking Supplied Accessories

Use the following accessories to download recorded still images from a disc or a memory card to your computer.

- IFC-300PCU USB Cable



- DIGITAL VIDEO SOLUTION DISK



The explanations in this manual use mainly Mac OS X version 10.3 screen shots. The steps and windows may vary depending on your computer.

**Macintosh**

# System Requirements

---

<b>OS:</b>	Mac OS X (version 10.1.5/10.2/10.3)
<b>Computer Model:</b>	Computers that come with above OS preinstalled
<b>CPU:</b>	PowerPC G3/G4/G5
<b>RAM:</b>	256 MB or more
<b>Free Hard Disk Space:</b>	Canon Utilities - ImageBrowser 200 MB or more - PhotoStitch 40 MB or more
<b>Display:</b>	1024 × 768 pixels/32,000 colors or better



- Proper operation is not guaranteed on a user-built PC.
- Proper operation is not guaranteed on any particular system, even if it meets the requirements outlined above.
- ImageBrowser and PhotoStitch do not operate on disks formatted with the Unix File System (UFS).
- A CD-ROM drive is required to install the software.

# What is Digital Video Software

The following software will be installed by installing the Digital Video Software.

## ■ ImageBrowser

- Viewing downloaded still images
- Categorizing, organizing, and searching large volumes of still images
- Editing still images
- Changing the data for still images and save them as new files
- Attaching still images to E-mail
- Viewing still images in a slide show
- Adding sound to a still image
- Printing still images with titles and comments
- Printing indexes

## ■ CameraWindow

- Downloading still images from a disc or a memory card to your computer
- Viewing still images recorded in a disc or a memory card
- Applying DPOF (Digital Print Order Format) settings to the still images recorded on a memory card

## ■ PhotoStitch

Merging a series of overlapping still images into a single, seamless panorama

This instruction manual explains how to install the software, what you can do with the main features and how to operate them. For more detailed operational instructions, refer to the Help menu of each software program.

E

Macintosh

# Installing the Digital Video Software

---



Before you connect the camcorder to the computer with the USB cable for the first time, you must install the Digital Video Software.



## **Mac OS X (version 10.1.5/10.2/10.3) Users:**

Your digital video camcorder is equipped with the standard Picture Transfer Protocol (PTP). This protocol enables you to download still images by simply connecting the camera to a computer with the USB cable (using software such as iPhoto or Image Capture preinstalled on Mac OS X).

However, please note that there are several limitations to downloading still images with this method.

- It may take a few minutes, after connecting the camcorder, until you can download still images.
- Mac OS X version 10.2/10.3
  - When downloading the still images by Image Capture that comes with Mac OS v10.2/10.3, the Exif version may change to 2.1 and image information may be modified. Either install ImageBrowser to download the still images or use the following procedures.
    - 1) Connect the camcorder to the computer, and start Image Capture.
    - 2) Click [Options].
    - 3) Remove the checkmark from [Embed Colorsync profile] in the [Download Options] tab and click [OK].

- 
- 1 Close all programs that are running, and check that a camcorder is not connected to the computer.**

---

  - 2 Set the DIGITAL VIDEO SOLUTION DISK in the computer's CD-ROM drive.**

---

  - 3 Double click the CD-ROM icon and the [CanonDigitalVideoInstaller] icon.**

## 4 Click Digital Video Software [Install].

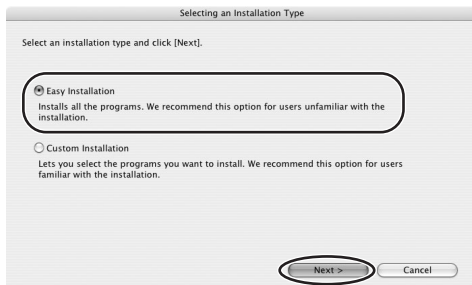
Installer Panel



E

## 5 Select [Easy Installation] and click [Next].

To install the software individually, select [Custom Installation].



## 6 Read the license agreement and click [Agree].

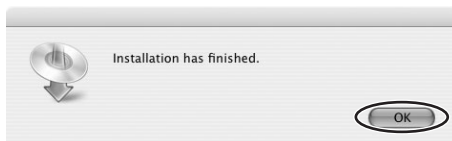
## 7 Review the installation settings and click [Next].



Macintosh

## 8 When the “Installation has finished.” message appears, click [OK].

After the installation is complete, restart the computer as prompted.





# Before Downloading Still Images


## Connecting the Camcorder to a Computer

E



- Be sure to install the Digital Video Software before you connect the camcorder to the computer.
- Make sure the camcorder is being powered using the power adapter before connecting it to a computer.
- Connect the USB cable directly to one of the computer's main USB ports. The interface may not function correctly if the camcorder is connected via a USB hub.
- The connection may not operate correctly if you are using other USB devices, excluding USB mice or keyboards, at the same time. If this occurs, disconnect the other devices from the computer and try reconnecting the camcorder.
- Do not connect two or more camcorders to the same computer via the USB interface. The connections may not operate correctly.
- **Never allow the computer to go into standby (sleep) mode while a camcorder is connected via the USB interface.**



- Refer to your computer manual for the location of the computer's USB ports.
- See your camcorder instruction manual for how to connect the camcorder to the computer and how to change the media setting (MEDIA SEL. ) in the SYSTEM SETUP menu.

**1 Insert a disc or a memory card containing images into the camcorder.**

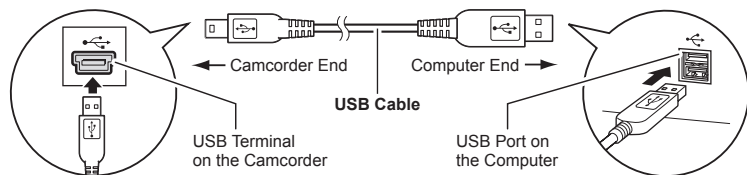
**2 Connect the power adapter to the camcorder.**

**3 Turn the power switch to PLAY and move the / switch to .**

Wait until the camcorder's access indicator stops flashing.

**4 To download still images on the disc, select [DISC] in the SYSTEM SETUP menu.  
To download still images on the card, select [CARD] in the SYSTEM SETUP menu.**

**5 Attach the supplied USB cable to the computer's USB port and the camcorder's USB Terminal.**



Macintosh

## CameraWindow Automatic Launch Setting

When the first time connecting the camcorder to the computer, perform the steps below.

### ■ Mac OS 10.2 - 10.3

- 1 Start Image Capture application and select [Preferences] from the [Image Capture] menu.



- 2 Select [Other] from [When a camera is connected, open].



- 3 Select CameraWindow and click [Open].

CameraWindow is normally installed in [Applications] ▶ [Canon Utilities] ▶ [CameraWindow].

- 4 Click [OK].

### ■ Mac OS 10.1.5

- 1 Start Image Capture application and select [Other] from [Hot Plug Action].

- 2 Select CameraWindow and click [Open].



- 3 Close Image Capture.

## Downloading Still Images (ImageBrowser)

Below explains the procedure for connecting a camcorder to a computer using the USB cable. For connecting a card reader/writer, see *Using a Card Reader/Writer* ( 17).

E



- Proper operation when connecting to a computer or printer cannot be guaranteed if the disc inserted into the camcorder was recorded or used in a non-Canon digital device.
- If a memory card contains an enormous volume of images (approx. 1000 or more), you may not be able to download images with ImageBrowser or an OS standard software depending on the computer you are using or the installed OS. When using a memory card, please use a card reader to download the still images; for the disc, please use your computer's DVD drive. When using the DVD drive to download the images recorded on the disc, it is necessary to insert a finalized disc.
  - You cannot record any new images on the finalized DVD-R disc or unfinalize it.
- Observe the following precautions when the camcorder's access indicator is flashing. Failure to do so may cause disc or memory card data to become corrupted.
  - Do not open the disc or memory card cover, remove the disc or memory card or detach the USB cable.
  - Do not turn off the camcorder or the computer.
  - Do not change the position of the power switch or the /  switch.
- Images recorded onto the disc, memory card or downloaded to the hard disk are important original data files. Create a copy of the file first before working on it on your computer.

### Using the Computer to Download Still Images

You can select a downloading method in the Camera Control window.

#### ■ Auto-downloading

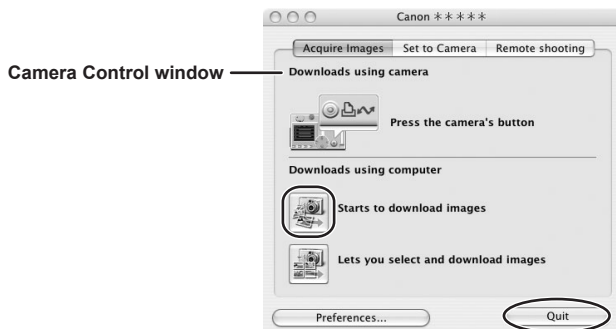
#### 1 Connect the camcorder to the computer ( 9).

To start the Camera Control window manually, double-click the [Canon CameraWindow] icon located on the desktop. If the [Canon CameraWindow] icon is not on the desktop, double click the [Canon Utilities] folder on the drive where the program was installed, followed by the [CameraWindow] folder and the [CameraWindow] icon.

Macintosh

## 2 Click [Starts to download images].

- ImageBrowser starts.
- Click [Quit] to close the Camera Control window after downloading images.



The Remote shooting function is not supported by your camcorder.

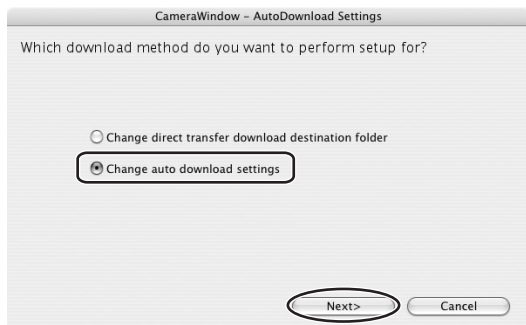
## ■ Applying Auto-downloading Settings

This task allows you to apply auto-downloading settings. You can specify the types of images and the destination folder.

## 1 In the Camera Control window, click the [Acquire Images] tab and click [Preferences].

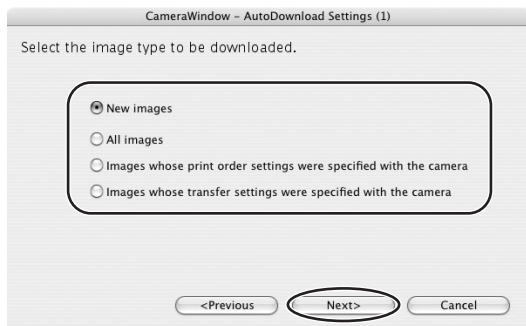


## 2 Select [Change auto download settings] and click [Next].



E

## 3 Select the image type to be downloaded and click [Next].



The still images recorded on the disc will not be marked as “already transferred” after downloading.

## 4 Specify the destination folder settings and click [Next].

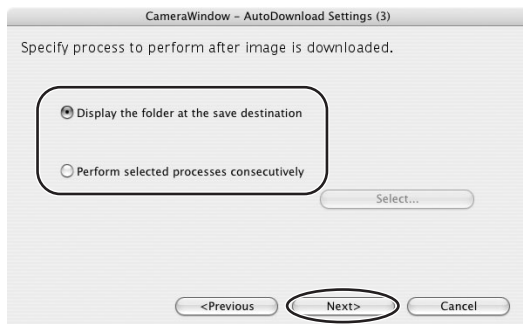
Destination Folder

Click this button to browse where you want to save the images.

Select to specify the name of the subfolder.



## 5 Specify a process to perform after the image is downloaded and click [Next].



Below window will be displayed when you select [Perform selected processes consecutively] (You can redisplay the window by clicking [Select]). Select a process to perform after the image is downloaded, and click [OK].



## 6 Click [Finish].

Placing a check mark here makes still images in the camcorder to be automatically downloaded when the camcorder is connected.



E

## ■ Downloading the Selected Still Images from the CameraWindow

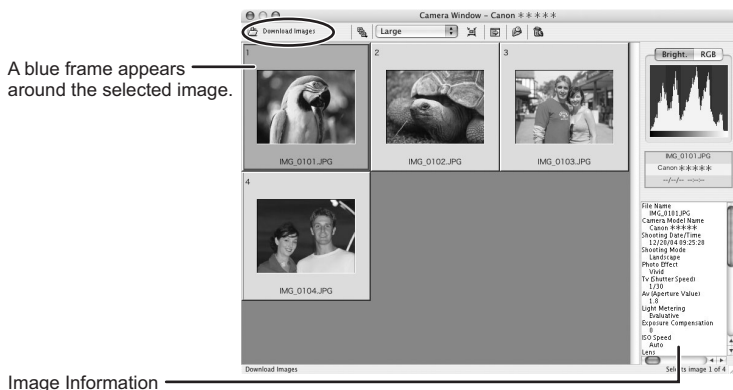
### 1 Click [Lets you select and download images].




Macintosh

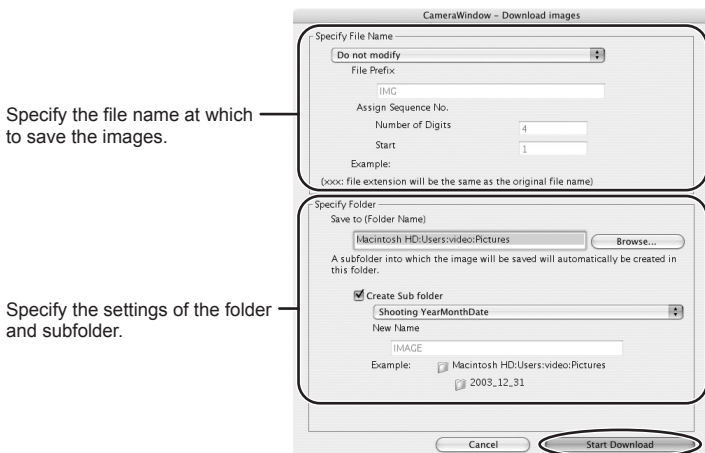
## 2 Select images you wish to download and click [Download Images].

- Clicking on 2 images while holding down the [option] + [shift] key selects also all images between the 2 images.
- Clicking on different images while holding down the [shift] key selects multiple images.



- If [Night], [SUPER NIGHT], [SPOTLIGHT] or [SUNSET] are chosen as recording programs or if [SOFT SKIN DETAIL] is chosen as an image effect, this information may not be displayed in the Image Information.
- [Delete] from the [Edit] menu and  will not be active when transferring the still images recorded on the disc.

## 3 Confirm the settings and click [Start Download].





## ■ Using a Card Reader/Writer

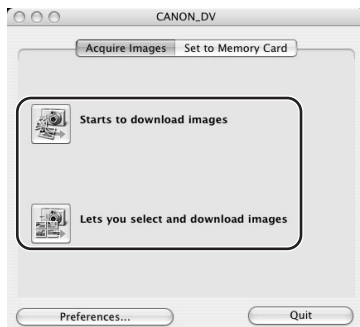


If your card reader/writer does not support miniSD cards, please purchase an appropriate adapter for the card.

### 1 Insert a memory card into the reader.

### 2 Select a method to download the images.


- [Starts to download images]: CameraWindow appears, and the images in the memory card are downloaded. To apply auto-downloading settings, refer to *Applying Auto-downloading Settings* (□ 12).
- [Lets you select and download images]: CameraWindow appears, and the images in the memory card are shown as thumbnails.



## Using the Camcorder to Download Still Images (Direct Transfer Function)

If your camcorder supports the Direct Transfer Function, you can use the camcorder to download images.

### 1 Set the direct transfer settings on the camcorder screen after starting the Camera Control window.

- See your camcorder instruction manual for how to set and operate the camcorder to transfer images.
- For instructions on how to change the destination folder and the folder name, see *Applying Auto-downloading Settings* (□ 12).
- The  button cannot be used when it is not lighted.

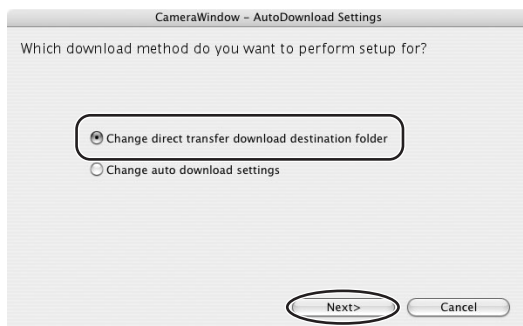
### 2 Press the button on the camcorder.

## ■ Setting the Direct Transfer Download Destination Folder

**1** Click the [Acquire Images] tab and click [Preferences].



**2** Select [Change direct transfer download destination folder] and click [Next].



## 3

**Specify the destination folder settings and click [Finish].**

Click [Quit] to close the Camera Control window.

Destination Folder

Specify the location at which to save the image.

A new folder will be created for each of the images' shooting dates in the following folder, and the images will be saved there.


Macintosh HD:Users:video:Pictures

Browse...

Click this button to specify the destination folder.

Create Sub folder

Shooting YearMonthDate

Example:  Macintosh HD:Users:video:Pictures

 2003\_12\_31

Select to specify the name of the subfolder.

<Previous

Finish

Cancel

E

Macintosh

# ImageBrowser Windows

This section explains the windows of ImageBrowser.

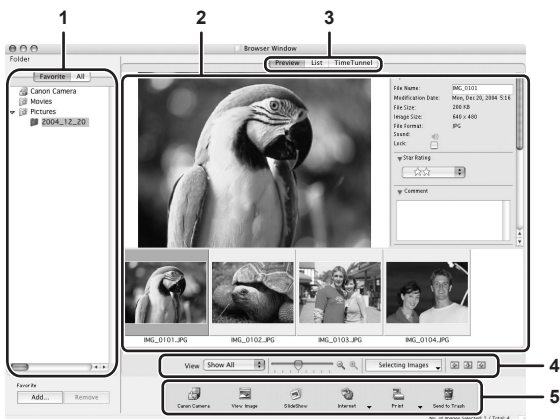


To start ImageBrowser, double-click the  icon located on the desktop.

If the ImageBrowser icon is not on the desktop, double-click the [Canon Utilities] folder on the drive on which the program was installed, followed by the [ImageBrowser] folder and the [ImageBrowser] icon.

## Browser Window

This is the ImageBrowser's Main Window. You can view and manage the downloaded still images.



## 1 Explorer View

Displays the disks and folders that you can use on your computer. If you click the disclosure triangle on the left edge of the display, you can switch between collapsing and expanding the contents of that folder.

Selecting the [Favorite] tab shows only the folders that are registered as Favorites. To register a folder as Favorites, follow the instructions below.

**When you have selected the [All] tab:**

Select a folder and click [Add to Favorites].

**When you have selected the [Favorite] tab:**

Click [Add] and specify a folder.

To remove the registered folder, select the folder, and click [Remove].

## 2 Browser Area

This area displays the still images contained in the selected folder.

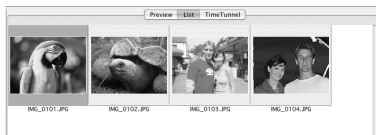
## 3 View Mode

You can select a view mode of still images in the Browser Area.

**[Preview]:** The thumbnail still images are displayed at the bottom of the Browser Area, and the Information Panel is displayed in the upper part.

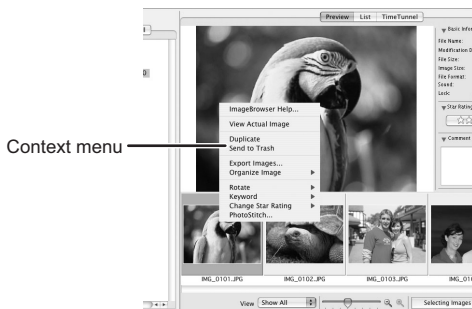


**[List]:** The still images are displayed as thumbnails. The thumbnails can be enlarged/reduced by selecting [Enlarge] or [Reduce] from the [View] menu.



### Context Menu

When the view mode is set to [Preview] or [List], click on a thumbnail image while pressing the [control] key on the keyboard, a context menu will appear. The context menu allows you to select several functions directly without using the menu bar located on top of the window.

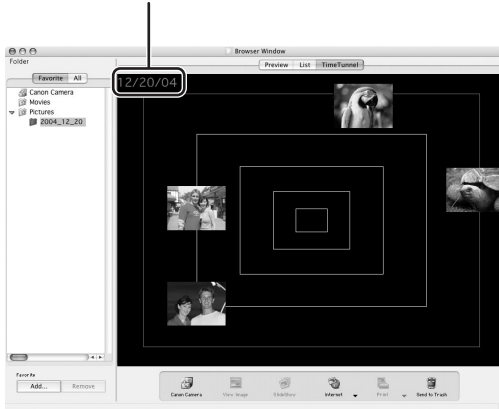


**[TimeTunnel]:** The still images are displayed in the chronological order.

The date/time at which the images were shot appears on the red line. You can change this date/time by double-clicking it on the display. A window similar to the one below appears. Specify the new date/time.



Move the slider up or down to move backward or forward in time.

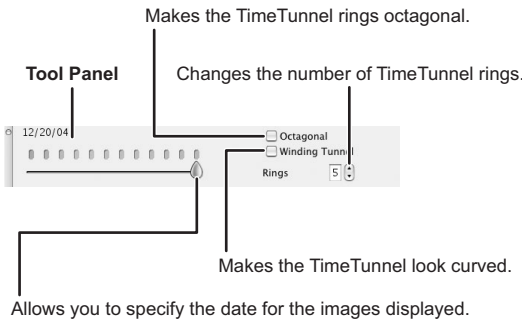


Click to display the control panel.

**[Display Tool Panel]:** Select to display or hide the tool panel.

**[Auto Cruise]:** Enables or disables [Auto Cruise]. When [Auto Cruise] is active, the time movement continues even after you have moved and released the bar.

**[Play Sound]:** Plays back the added sound.



**Tool Panel**

Makes the TimeTunnel rings octagonal.

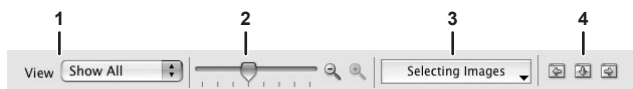
Changes the number of TimeTunnel rings.

Makes the TimeTunnel look curved.

Allows you to specify the date for the images displayed.

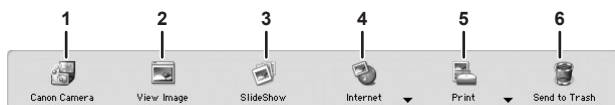
## 4 Browser Area Tool Bar

The tool bar does not appear in the [TimeTunnel] mode.



1	<b>View</b>	Allows you to select displayed still images according to the star rating.
2	<b>Enlarge/Reduce</b>	Enlarges/reduces the thumbnails in the Browser Window.
3	<b>Selecting Images</b>	Allows to select all still images and deselects still images.
4	<b>Display Pattern</b>	Allows to change the appearances of the Browser Window.

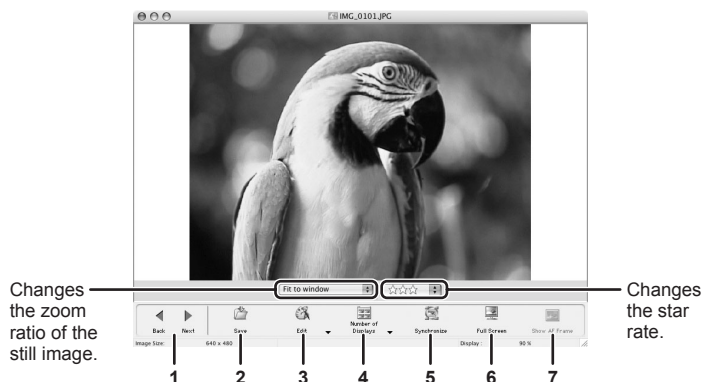
## 5 Application Tool Bar



1	<b>Canon Camera</b>	Opens CameraWindow.
2	<b>View Image</b>	Displays a selected still image in the [Image Viewer] window.
3	<b>SlideShow</b>	Displays still images in a slide show.
4	<b>Internet</b>	Allows attaching the selected still images to E-mail messages.
5	<b>Print</b>	Prints the selected still images.
6	<b>Send to Trash</b>	Deletes the selected still images.

## [Image Viewer] Window


The [Image Viewer] window appears when you select a still image and click [View Image] or double click a still image.

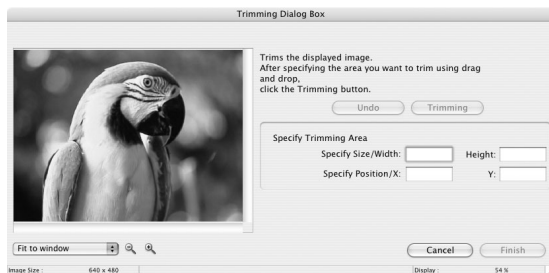


1	<b>Back/Next</b>	Displays the previous/next still image in the current folder.
2	<b>Save</b>	Allows saving the edited still image.
3	<b>Edit</b>	Allows adjusting colors and trimming the still image or registering other image editing applications. Unable to use when the multiple still images are selected.
4	<b>Number of Displays</b>	Allows you to display multiple still images at the same time.
5	<b>Synchronize</b>	Synchronizes View functions across all displayed still images.
6	<b>Full Screen</b>	Displays a still image in full screen size. To return to Browser Window, click the full screen sized image or press any key.
7	<b>Show AF Frame</b>	This function cannot be used for the still images recorded by the camcorder.

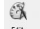


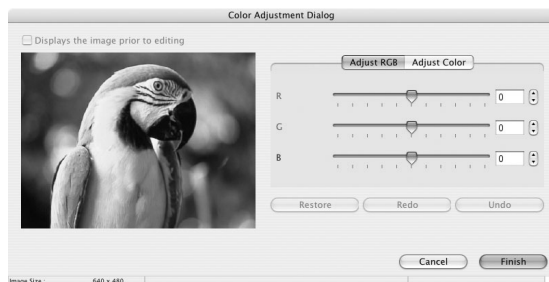
## ■ [Trimming Dialog Box] Window

Select [Trimming] from the  icon located at the bottom of the [Image Viewer] window. Either drag the mouse on the still image or specify the cropping area, and click [Trimming].



## ■ [Color Adjustment Dialog] Window

Select [Adjust Color] from the  icon located at the bottom of the [Image Viewer] window. [Color Adjustment Dialog] allows you to change the brightness, saturation, contrast, and RGB of the still image.



# Organizing Still Images

## Applying Star Rating

- This task allows you to apply ratings to your images from one star to three stars. The Star Rating can be used as one of the search conditions, or for the selection of images to be displayed in the Browser Window.
- The default setting of the Star Rating is two stars.

**1** Select the image to which you wish to apply the Star Rating.

**2** Select [Change Star Rating] from the [Edit] menu.



You can display images according to Star Rating by selecting from the [View] drop down list.

## Specifying the Keywords

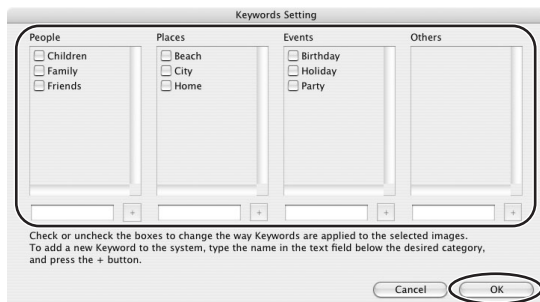
Keyword is used for searching images.

**1** Select an image you wish to apply the keyword.

**2** Select [Keyword] ▶ [Settings] from the [Edit] menu.



- 3** Place a check mark next to the keyword you wish to apply and click [OK].



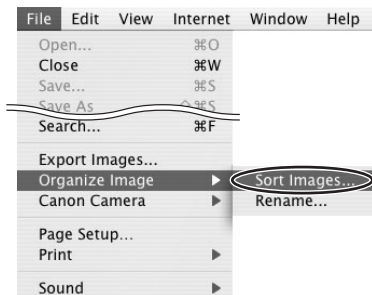
You can add and delete keywords, or change the keyword list in the [Manage Keywords] window by selecting [Keyword] ▶ [Manage] from the [Edit] menu.

## Classifying the Still Images

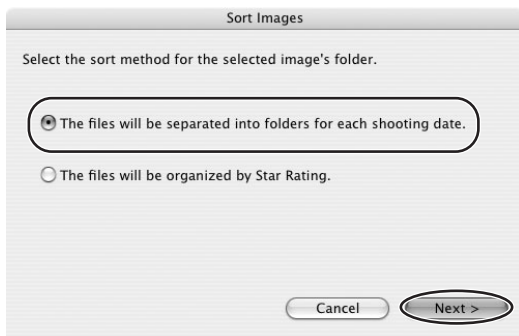
This task allows you to sort images into a folder according to the shooting date or Star Rating.

### ■ Sort by the Shooting Date

- 1** Select the images you wish to classify and select [Organize Image] ▶ [Sort Images] from the [File] menu.



- 2** Select [The files will be separated into folders for each shooting date.] and click [Next].

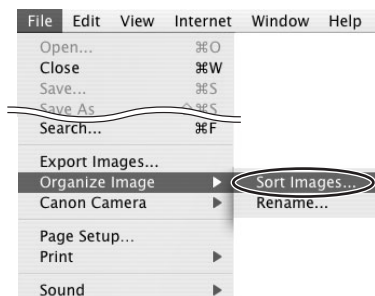


- 3** Specify the sort settings and click [OK].  
The selected images are classified into the specific folder.

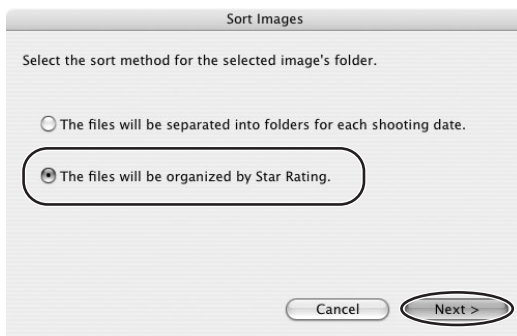


## ■ Sort by the Star Rating

- 1 Select the images you wish to classify and select [Organize Image] ▶ [Sort Images] from the [File] menu.

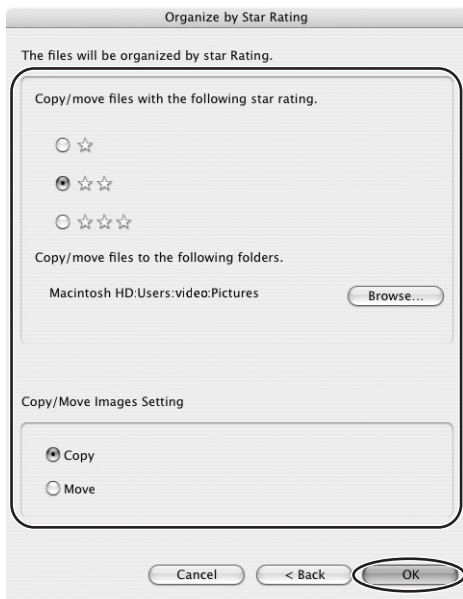


- 2 Select [The files will be organized by Star Rating.] and click [Next].



E

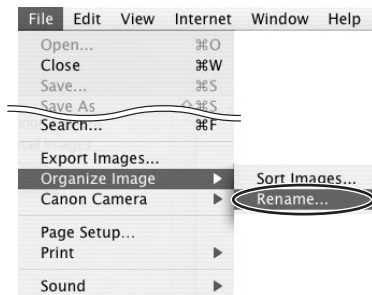
### 3 Specify the sort settings and click [OK].



## Renaming Multiple Files

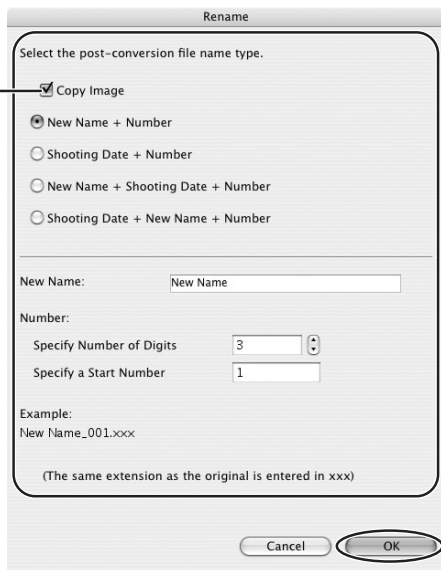
This task allows you to rename multiple files at the same time, or to rename and copy multiple files.

### 1 Select the still images you wish to rename and select [Organize Image] ▶ [Rename] from the [File] menu.



- 2 Specify the settings and click [OK].**  
The still images are renamed according to the settings specified.

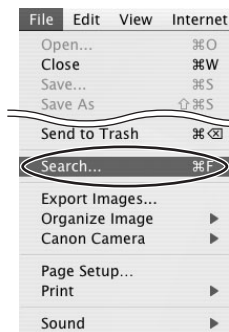
Placing a check mark here makes copies of still images with new names. The name of the original images will not be changed.

**E**

## Searching for Still Images

This task allows you to search for images by Star Rating, Modification Date, Shooting Date, Comment or Keywords.

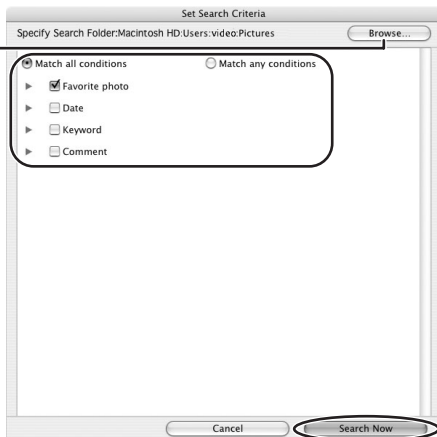
- 1 Select a folder in the explorer view.**
- 2 Select [Search] from the [File] menu.**

**Macintosh**

### 3 Specify the search conditions and click [Search Now].

- The search results are displayed as thumbnails.
- Select at least one search condition.
- Clicking the ► icon discloses the parameters of settings.

Clicking this button allows you to specify a folder.



### 4 Click [Finish].

- To change the search parameters and perform another search, click [Back] and repeat steps 3-4.





- The images of the search result are displayed in the [Search Results] folder. You can print or copy these images to another folder. The images will remain in this folder until ImageBrowser is closed or another search is performed.



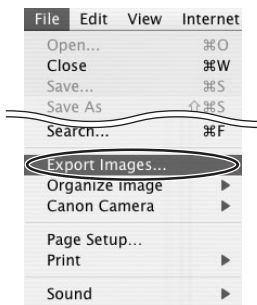
# Exporting Still Images

## Changing the File Type and Save

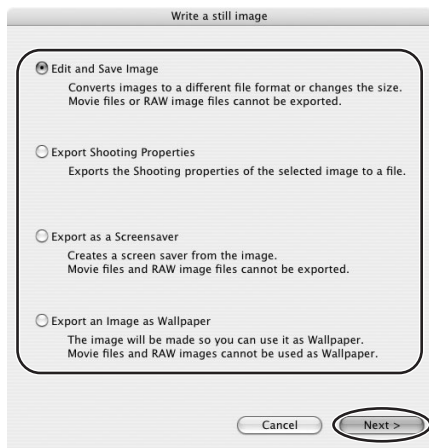
This task allows you to change the size, resolution or data for of selected still images and save them as new files and allows saving the shooting properties of the still image to a text file or copying the still images with new names.

Furthermore, you can export still images for use as a screen saver or a wallpaper.

- 1 Select an image you wish to export and [Export Images] from the [File] menu.**



- 2 Select exporting type and click [Next].**



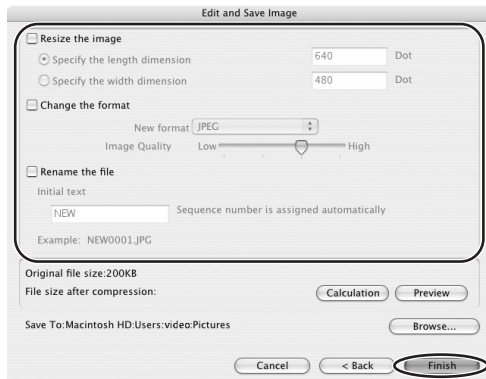
### 3 Specify the export settings and click [Finish].

The window varies depending on the selected export type in step 2.

#### When you have selected [Edit and Save Image]:

You can convert still images to another file type, resize and save them as new files. You can select the file type from BMP, PICT, JPEG and TIFF. You can also specify a prefix to be added to the exported still images.

E



#### When you have selected [Export Shooting Properties]:

You can select information you wish to export and save as a text file.



**When you have selected [Export as a Screensaver]:**

You can export and save the image as a screen saver.



**When you have selected [Export an Image as Wallpaper]:**

You can export and save the image as a desktop wallpaper. This task cannot be performed if you have selected multiple images.



## Adding Still Images from Your Computer to the Memory Card

You can save still images from the computer to a memory card. You can also save sample images for card mix from the DIGITAL VIDEO SOLUTION DISK.



Only still images with JPEG compression can be saved to the memory card. TIFF, PICT, Windows bitmap will be converted to JPEG compression and saved to the memory card.



Unable to upload the still images to the disc.

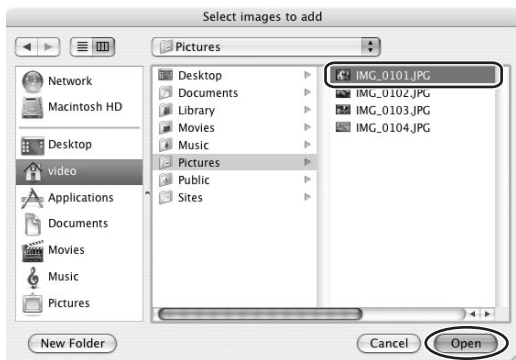
### ■ Adding Still Images to the Memory Card

- 1** Connect the camcorder to the computer (📖 9).
- 2** Click the [Set to Camera] tab in the Camera Control window, and [Uploads images to the camera].



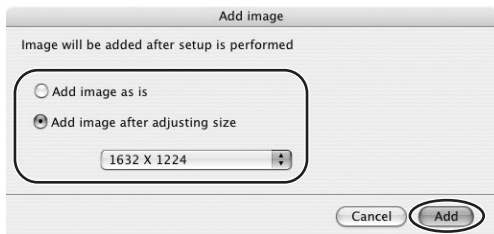
### 3 Select the still image you wish to add and click [Open].

You can check the selected image by clicking the file name.



### 4 In the Add image window, select the image size and click [Add].

- The selected images will be recorded to the memory card.
- When recording is complete, the images will appear in the CameraWindow.



### ■ Adding Sample Images to the Memory Card

You can save sample images for card mix to the memory card. CARD CHROMA, CARD ANIMATION, CARD LUMINANCE and CAMERA CHROMA are provided on the DIGITAL VIDEO SOLUTION DISK.



- The Sample images provided on the supplied DIGITAL VIDEO SOLUTION DISK are intended only for personal use with this camcorder. Do not use these sample images for other purposes.
- Unable to upload the sample images to the disc.

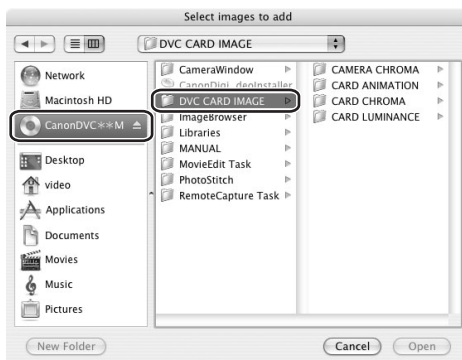
### 1 Insert the DIGITAL VIDEO SOLUTION DISK to the computer's CD-ROM drive.

### 2 Connect the camcorder to the computer ( 9 ).

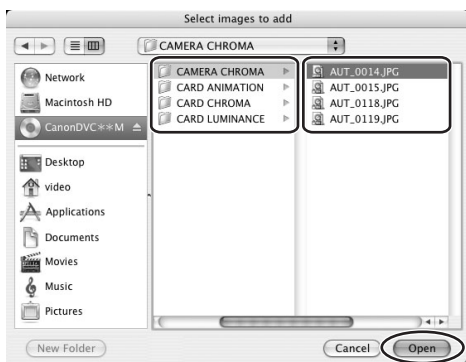
- 3** Click the [Set to Camera] tab in the Camera Control window, and [Uploads images to the camera].



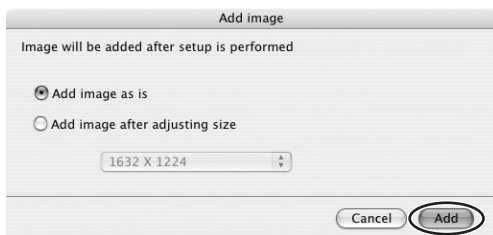
- 4** Double-click the CD-ROM icon, followed by the [DVC CARD IMAGE] folder. The folders [CAMERA CHROMA], [CARD ANIMATION], [CARD CHROMA] and [CARD LUMINANCE] appear.



- 5** Open the [CAMERA CHROMA], [CARD ANIMATION], [CARD CHROMA] or [CARD LUMINANCE] folder, select the image you wish to copy to the camcorder and click [Open].



- 6** In the Add image window, click [Add].



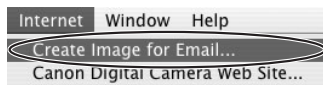


# Using Various Functions

## Attaching Still Images to E-mail Messages

You can attach selected images to an E-mail message.

- 1** Select the images you wish to send in the Browser Area.
- 2** From the [Internet] menu, select [Create Image for Email].

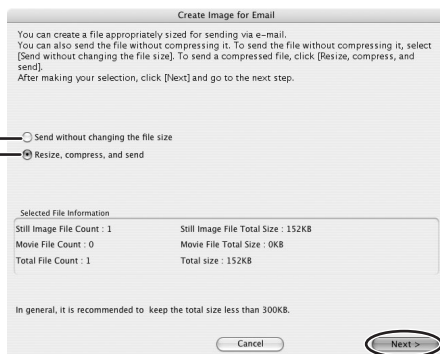


- 3** Specify the image size and click [Next].

When you select [Send without changing the file size], move on to step 5.

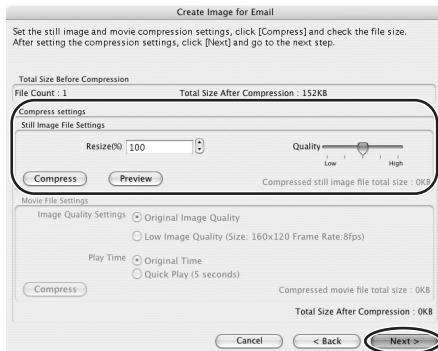
Select this if you do not wish to reduce the size of the still image.

Normally, select this option.



## 4 Specify the reduction ratio and image quality and click [Next].

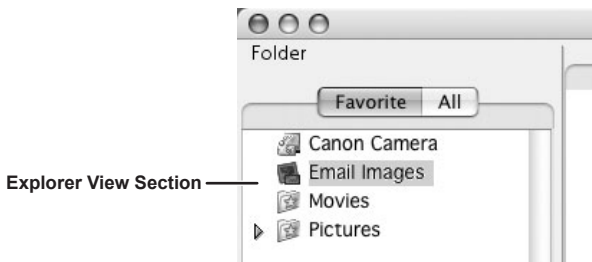
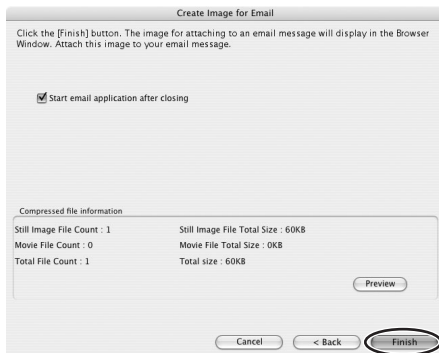
- [Resize(%)] : Select the reduction ratio relative to the original size of the image.
- [Quality] : Select the image quality. The lower the quality, the rougher the image becomes, but the size of the file also becomes smaller.
- [Compress] : Use it to check the file size when you actually compress the image. The file size appears next to "Total Size After Compression".



## 5 Select whether you wish to start your e-mail software and click [Finish].

- If you have selected [Start email application after closing], your e-mail software starts automatically. Open a new e-mail message and attach the image. With some types of e-mail software, you can attach images to e-mail messages simply by dragging them from the Browser Area to the new message window.
- Click [Preview] to check the changed image.
- The image will be saved to the [Email Images] folder in the explorer view section.

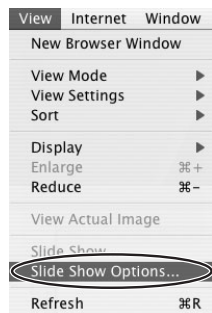
E



- You can set the e-mail software to start automatically in step 5. Note that some e-mail software may not start automatically. For details, please refer to the Help menu of the OS you are using.
- The images in the [Email Images] folder are saved in the following location: Open the [Users] folder, followed by [User login name], [Library], [Preferences], [ImageBrowserUserData], and [Mail].

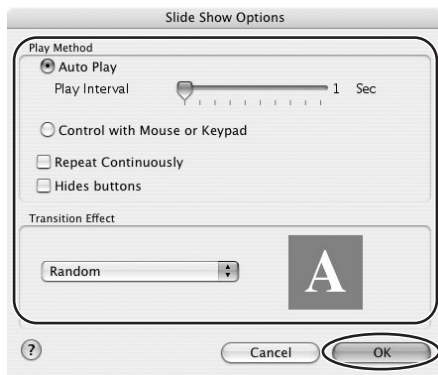
## Running a Slide Show

### 1 From the [View] menu, select [Slide Show Options].



### 2 Select the slide show settings and click [OK].

- [Auto Play]: Select the interval by sliding the control under [Play Interval] (from 1 to 30 seconds).
- [Control with Mouse or Keypad]: Advances the slide show manually with the mouse or keyboard.
- [Repeat Continuously]: Runs the slide show in a loop.
- [Hides buttons]: Hides the buttons during the slide show.
- [Transition Effect]: Select the transition effect to be used when moving from one slide to another. When you select an effect, you can check the effect in the preview window.



### 3 Select the still images and select [Slide Show] from the [View] menu.

Click  on the lower right of the screen to end the slide show.

## Merging Panoramic Images (PhotoStitch)

You can merge a series of overlapping images into a single, seamless panorama. PhotoStitch automatically arranges still images recorded with the camcorder's Stitch Assist mode in their correct order and orientation, making it easy to merge them. Please refer to the Camcorder Instruction Manual to learn how to record in Stitch Assist mode.

The following instruction explains how to merge still images recorded in Stitch Assist mode with the camcorder.



Still images recorded in Stitch Assist mode with Wide-converter or Tele-converter attached cannot be merged correctly.

### 1 Select still images shot in Stitch Assist mode.

To use PhotoStitch, images need to be shot in Stitch Assist mode. To download images, please refer to *Downloading Still Images (ImageBrowser)* (11).

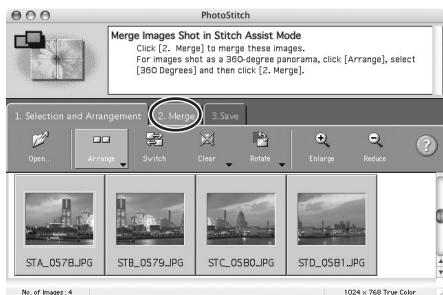


### 2 Select [PhotoStitch] from the [Edit] menu.

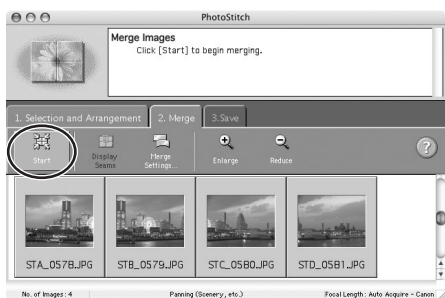


### 3 Arrange the order of the still images and click [2.Merge].

Operational instructions are displayed in the upper section of the window.

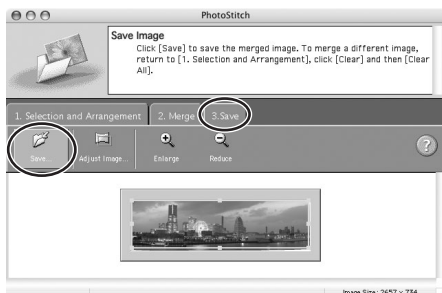


### 4 Click [Start].



## 5 Select [3.Save] and then click [Save].

- Select the destination folder, input the file name and click [Save].
- In the View the Saved Image? window, click [Yes]. The Viewer window opens and displays the merged image.
- To exit PhotoStitch, from the [PhotoStitch] menu, select [Quit PhotoStitch].



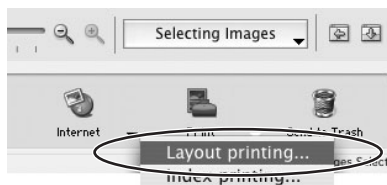
- You can record the surroundings in 360 degrees, and stitch them together later to form a 360-degrees cylinder. (In [1. Selection and Arrangement], select [Arrange] and [360 Degrees].) By saving this stitched image in QuickTime VR type, you can then get a virtual view of the surroundings by manipulating the mouse.
- For more details, please refer to the PhotoStitch Help menu.

## Printing Still Images (ImageBrowser)

You can select the layout when printing still images.

### 1 Select the still image(s) you wish to print in the Browser Window.

### 2 Click [Print] and select [Layout printing] from the displayed menu.



- The Layout Options window and Print window appear.
- If the Layout Options window does not appear, display it by clicking [LAYOUT OPTIONS] in the Print window.

### Edit the Page Title

Open the [Edit] menu and select [Edit Header].

### Change the Image Size

Drag the border to resize the still image.

### Change the Layout

Drag the still image to change the layout.

### Add Captions to Still Images

Click the still image and then the [Edit] menu and select [Edit Caption].

### Add Text

Open the [Edit] menu and select [Add Text].

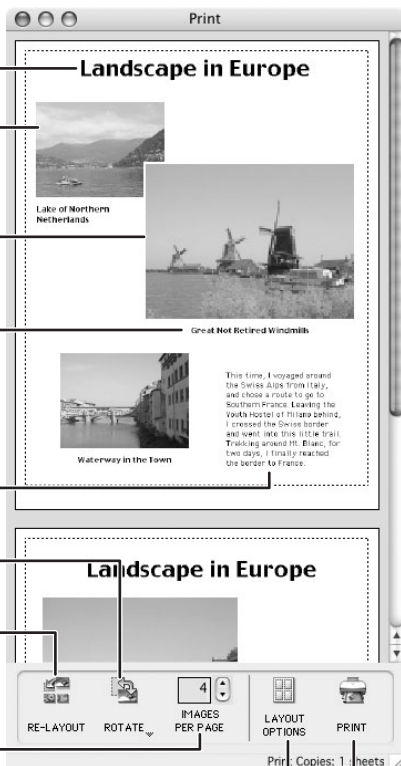
Click this to rotate the selected still image.

Click this to reset the layout.

Change the default number of still images printed per page.

Click this to select a layout type.

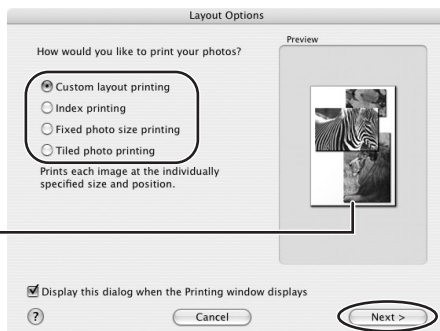
Click this to display the Print dialog.





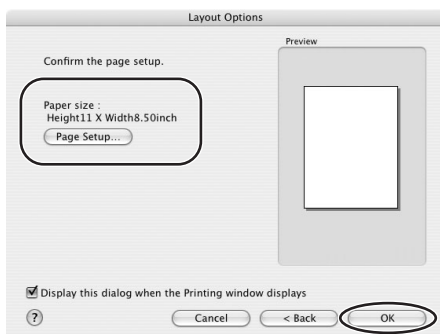
### 3 In the Layout Options window, select a layout and click [Next].

Shows the preview of the printing images



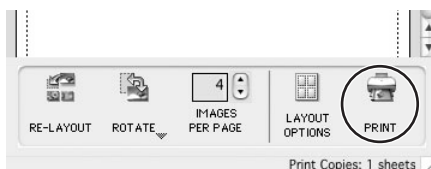
### 4 Select a paper size and click [OK].

- The Print window opens, allowing you to change the layout and printing settings.
- The settings available will vary according to the type of layout selected in step 3.



### 5 Click [PRINT] in the Print window.

The Print dialog appears.



### 6 Click [Print].

Printing starts.

E

## ■ Adjusting Image Quality and Printing (Exif 2.2 Compliant)

ImageBrowser allows you to print still images with image quality adjustments. ImageBrowser also supports the Exif 2.2 standard (or Exif Print).



- Still images shot with camcorders complying with the Exif 2.2 standard incorporate shooting settings information, such as the shooting conditions and scene mode, along with the image data. The Exif Print adjustment protocol uses this information to correct the image quality more accurately to reflect the shooting settings.
- When printing from ImageBrowser, the image quality adjustment settings are active for all still images.

### 1 Click the [ImageBrowser] menu in ImageBrowser and select [Preferences].



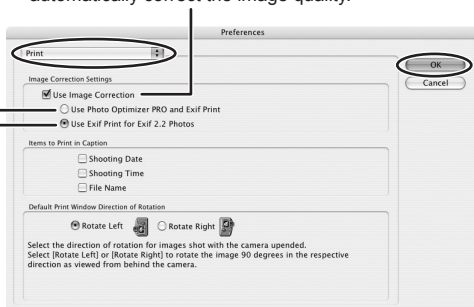
### 2 In the [Preferences] window, select [Print], set the image quality settings and click [OK].

See *Printing Still Images (ImageBrowser)* (47) for the next steps.

A check mark must be placed here to automatically correct the image quality.

Select this option to automatically correct images shot with Exif 2.2 compliant camcorders and other images.

Select this option to automatically correct only images shot with Exif 2.2 compliant camcorders.



## Adding Sound to a Still Image

To add sound to still images, use the MAC OS recording function. Depending on the computer, you may need to connect peripherals such as microphones. Check if your computer settings allow recording.


The sound cannot be played back on the camcorder.

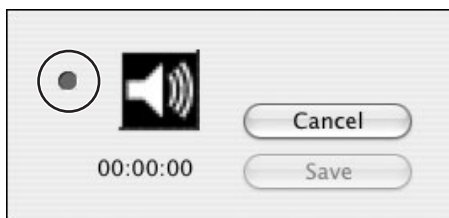
E

- 1 In the Browser Area, select a still image and select [Sound] ▶ [Record] from the [File] menu.**


The recording window appears.




- 2 Click  and start recording when the [Save] button is enabled.**



- 3 Click [Save] to stop recording.**

-  appears on the still image.
- The sound file will be copied in AIFF format (extension ".AIF") to the same folder as the still image.
- To play back the sound, select an image with a sound icon and select [Sound] ▶ [Play] from the [File] menu.



- To remove sound from a still image, select [Sound] ▶ [Send to Trash] from the [File] menu.  disappears and the copied sound file will be deleted.
- While playing back the sound, select [Sound] ▶ [Pause] or [Stop] to control the status.

## Applying DPOF Settings

You can select still images and the number of prints for automatic printing on a DPOF (Digital Print Order Format)-compliant printer. You can set the DPOF print settings for the still images on the card also on the camcorder.



- DPOF print settings cannot be applied to still images recorded on the disc.
- The [Edit Slide/DPOF] window allows print settings on up to 998 still images. With some camcorders, DPOF print settings are limited to a maximum of 200 still images. In that case, all DPOF print settings on the 201st still image and onward will be erased.
- If 999 or more still images are recorded on a memory card, the [Edit Slide/DPOF] window may not operate properly. To set the number of prints, reduce the number of images on a memory card to 998 or less.

**1**

### Click the [Set to Camera] tab and click [Set Slide Show/DPOF] in the Camera Control window

- When connecting a card reader/writer, click the [Set to Memory Card] tab and click [Set Slide Show/DPOF].
- The slide show function of the camcorder cannot be used.



## 2 Click [Print Order(DPOF)] and select a print type from the drop-down list.

- [Standard Print]: Prints selected still images in the specified number of copies. Use the arrows next to the boxes to select the number of copies.
- [Index Print], [Both(Standard/Index)] and the option [Titles] of the [Edit] menu (printing of date and file number) are not supported by the camcorder.

E



## 3 Select the still images you wish to print and the number of copies.



Macintosh

## 4 Click [Save to Camera].



## Reviewing and Changing the Settings of the Camcorder

You can adjust the date, time and owner settings of the camcorder. You can also check the remaining memory card capacity or format the memory card.

## 1 Click the [Set to Camera] tab and click [Confirms/changes camera settings] in the Camera Control window.



## 2 Change the settings of the camcorder and click [OK].

Input a camcorder owner name here (up to 31 characters).

Set the date and time here.

Check this box to synchronize the camcorder to the computer's date and time settings.

Check the power status here.

Click this to format the memory card in the camcorder.

Check the remaining disc or memory card capacity here.

The screenshot shows the 'Camera Settings' dialog box with the following fields and controls:

- Camera Model :** Canon \*\*\*\*\*
- Body ID :** -
- Firmware Version :** 1.0.0.0
- Owner's Name** (text input field)
- Date & Time** section:
  - ☐ from Mac
  - Date: 2004. 7.26
  - Time: 5:26:24 PM
- Battery Status:** AC
- Memory card:** Status: Installed
- Format** button
- Free:** 27.12MB
- Total:** 30.46MB
- Apply**, **Cancel**, and **OK** buttons at the bottom.

Annotations with lines pointing to the fields:

- Line from 'Input a camcorder owner name here (up to 31 characters).' points to the 'Owner's Name' field.
- Line from 'Set the date and time here.' points to the 'Date & Time' section.
- Line from 'Check this box to synchronize the camcorder to the computer's date and time settings.' points to the 'from Mac' checkbox.
- Line from 'Check the power status here.' points to the 'Battery Status' field.
- Line from 'Click this to format the memory card in the camcorder.' points to the 'Format' button.
- Line from 'Check the remaining disc or memory card capacity here.' points to the 'Free' and 'Total' memory fields.



The disc in the camcorder cannot be formatted.

E

## Uninstalling the Software

Uninstall the software when you wish to delete it from your computer or when reinstallation is required to fix corrupted files.

### Uninstalling ImageBrowser and PhotoStitch

Move the program's folder into the Trash to uninstall programs such as ImageBrowser and PhotoStitch.



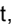



- If the program folders contain subfolders into which images have been saved, be careful not to accidentally delete those subfolders.
- For more details on how to uninstall ImageBrowser, refer to Read Me.



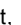


## Connection

**E**

- ? Camcorder is not recognized when connected to the computer.**
  - ➔ **There is no disc or memory card in the camcorder.**  
Insert a disc or a memory card into the camcorder.
  - ➔ **The camcorder is not set to the correct mode.**  
Turn the power switch to PLAY and move the  /  switch to . Next, select [DISC] or [CARD] in the SYSTEM SETUP menu.
  - ➔ **Camcorder is not correctly connected to the computer.**  
Read *Connecting the Camcorder to a Computer* ( 9) and check the connection.  
Ensure that you are using the correct cable and that its connectors are in good shape.
  - ➔ **If you are experiencing operational problems, detach the USB cable from the camcorder and computer and terminate the connection. Restart the computer and the camcorder, and then reconnect the camcorder.**

## ImageBrowser Operation

- ? Cannot download still images**
  - ➔ **The camcorder is not set to the correct mode.**  
Turn the power switch to PLAY and move the  /  switch to . Next, select [DISC] or [CARD] in the SYSTEM SETUP menu.
- ? Still image files or folders do not appear in ImageBrowser.**
  - ➔ **Still images of folders shown in ImageBrowser and the actual file contents may be different.**  
Click the [View] menu and select [Refresh].



**CANON INC.**

**U.S.A. ————— Canon U.S.A., Inc.**

Canon Customer Care Center  
Tel (US): 1-800-828-4040  
(Mon.-Fri., 9 AM to 8 PM Eastern Time)

**CANADA ————— Canon CANADA Inc.**

Tel (Canada): 1-800-OK-CANON (1-800-652-2666)

**ASIA ————— Canon Hongkong Co., Ltd.**

19/F., The Metropolis Tower, 10 Metropolis Drive,  
Hungghom, Kowloon, Hong Kong  
Phone: 852-2170-2828  
Fax: 852-2723-9684

The information on this manual is verified as of August 1st, 2005.