



CANON INC.

U.S.A. ————— **Canon U.S.A., Inc.**
Canon Customer Care Center
Tel (US): 1-800-828-4040
(Mon.-Fri., 9 AM to 8 PM Eastern Time)

CANADA ————— **Canon Canada Inc.**
Tel (Canada): 1-800-OK-CANON (1-800-652-2666)

ASIA ————— **Canon Hong Kong Co., Ltd.**
9/F, The Hong Kong Club Building, 3A Chater Road,
Central, Hong Kong
Phone: 852-2739-0802
Fax: 852-2369-7701



Printed on 100% reused paper.
Document réalisé avec du papier recyclé à 100%.
El papel aqui utilizado es 100% reciclado.

PUB. DIM-432

©CANON INC. 2002
DY8-9120-323-000

PRINTED IN JAPAN
IMPRIME AU JAPON
IMPRESO EN JAPÓN

PUB. DIM-432



DIGITAL VIDEO SOLUTION DISK Software Instruction Manual

Version 2

E

Mode d'emploi du logiciel

Manual de Instrucciones del software



Canon DIGITAL VIDEO SOLUTION DISK

PUB. DIM-432

READ CAREFULLY BEFORE USING

Canon Software License Agreement

IMPORTANT - READ THIS AGREEMENT BEFORE USING THE SOFTWARE ON THE CD-ROM IN THIS BOX. BY USING THE SOFTWARE, YOU AGREE TO BE BOUND BY THE TERMS OF THIS AGREEMENT.

This is a license agreement (the "Agreement") between you and Canon Inc. ("Canon").

IF YOU DO NOT AGREE TO THE TERMS AND CONDITIONS OF THIS AGREEMENT, DO NOT USE THE SOFTWARE PROGRAM ON THE CD-ROM (INCLUDING ALL SOUND AND IMAGE DATA) AND THE USER MANUAL IN THIS BOX (COLLECTIVELY, THE "SOFTWARE") AND PROMPTLY RETURN THE SOFTWARE TO YOUR POINT OF PURCHASE FOR A REFUND.

In consideration of the right to use the SOFTWARE, you agree to abide by the terms and conditions of this Agreement.

1. LICENSE: Canon grants you the personal, non-exclusive right to use the SOFTWARE only on a single computer. You may physically transfer the SOFTWARE from one computer to another provided that the SOFTWARE is used on only one computer at a time. You shall not install or use the SOFTWARE on a network, multiple CPU, multiple site arrangement, or any other hardware configuration where the SOFTWARE is accessible to more than one CPU or to more than one user.

With respect to the sound and image data ("Data") contained in the Software, which are to be downloaded to the applicable Canon digital camera product, Canon grants you a personal, non-exclusive license to use the Data on a single Canon digital camera product only.

YOU SHALL NOT ASSIGN, SUBLICENSE, RENT, LEASE, LOAN, CONVEY OR OTHERWISE USE, TRANSFER, COPY, TRANSLATE, CONVERT TO ANOTHER PROGRAMMING LANGUAGE, ALTER, MODIFY, DECOMPILE OR DISASSEMBLE THE SOFTWARE, IN WHOLE OR IN PART, EXCEPT AS EXPRESSLY PROVIDED IN THIS AGREEMENT.

2. BACK-UP COPY: You may make one copy of the SOFTWARE solely for back-up purposes, or copy the SOFTWARE onto the permanent storage device (e.g. a hard disk) of your computer and retain the original for back-up purposes. Any other copying of the SOFTWARE is a violation of this Agreement. You must reproduce and include the copyright notice on the back-up copy.

3. SUPPORT AND UPDATES: Neither Canon, nor its subsidiaries, dealers or distributors will be responsible for providing maintenance or support for use of the SOFTWARE. No updates, fixes or support will be made available for the SOFTWARE.

4. LIMITED WARRANTY AND LIMITATION OF LIABILITY: It is your responsibility to choose, maintain and match the hardware and software components of your computer system. Thus Canon does not guarantee uninterrupted service or correction of errors or that the functions or performance of the SOFTWARE will meet your requirements. THE SOFTWARE IS LICENSED ON AN "AS IS" BASIS AND WITHOUT WARRANTY OR CONDITION OF ANY KIND. The CD-ROM storing the SOFTWARE is warranted only against defective material under normal use for a period of ninety (90) days after purchase from an authorized Canon dealer as evidenced by your sales receipt. Your sole remedy for a defective CD-ROM shall be replacement of the same without charge when returned by you at your expense to your point of purchase and proven to be defective upon inspection. The Replacement CD-ROM will be warranted for the remainder of the original ninety (90) day warranty period of the defective CD-ROM. The limited warranty does not apply if the failure of the CD-ROM resulted from accident, abuse or misapplication of the SOFTWARE and shall not extend to anyone other than the original user of the SOFTWARE.

EXCEPT AS SPECIFICALLY SET FORTH IN THIS PARAGRAPH 4, CANON, CANON'S SUBSIDIARIES, DISTRIBUTORS AND DEALERS DISCLAIM ALL WARRANTIES, OR CONDITIONS, EXPRESS OR IMPLIED, INCLUDING ANY WARRANTY OR CONDITION OF MERCHANTABILITY OR FITNESS FOR A PARTICULAR PURPOSE, WITH RESPECT TO THE SOFTWARE.

NEITHER CANON NOR ANY OF CANON'S SUBSIDIARIES, DISTRIBUTORS OR DEALERS IS LIABLE FOR ANY DAMAGES HOWSOEVER CAUSED, INCLUDING WITHOUT LIMITATION, DIRECT, CONSEQUENTIAL OR INCIDENTAL LOSS OR DAMAGE INCLUDING LOSS OF PROFITS, EXPENSE OR INCONVENIENCE HOWSOEVER CAUSED OR ARISING OUT OF THE SOFTWARE OR THE USE THEREOF.

NEITHER CANON, NOR ANY OF CANON'S SUBSIDIARIES, DISTRIBUTORS OR DEALERS SHALL HAVE ANY OBLIGATION TO INDEMNIFY YOU AGAINST ANY CLAIM OR SUIT BROUGHT BY A THIRD PARTY ALLEGING THAT THE SOFTWARE OR THE USE THEREOF INFRINGES ANY INTELLECTUAL PROPERTY OF SUCH THIRD PARTY.

SOME STATES, PROVINCES OR LEGAL JURISDICTIONS DO NOT ALLOW THE EXCLUSION OF IMPLIED WARRANTIES, OR THE LIMITATION OR EXCLUSION OF LIABILITY FOR INCIDENTAL OR CONSEQUENTIAL DAMAGES, OR PERSONAL INJURY OR DEATH RESULTING FROM NEGLIGENCE ON THE PART OF THE SELLER, SO THE ABOVE DISCLAIMERS AND EXCLUSIONS MAY NOT APPLY TO YOU.

5. TERM: This Agreement is effective upon your using the SOFTWARE and remains in effect until expiration of all copyright interests in the SOFTWARE unless earlier terminated. You may terminate this Agreement by destroying the SOFTWARE. This Agreement will also terminate without notice to you if you fail to comply with any of the terms of this Agreement and you must then promptly return the SOFTWARE. In addition, Canon may enforce its other legal rights.

6. U.S. GOVERNMENT RESTRICTED RIGHTS NOTICE:

The SOFTWARE is a "commercial item," as that term is defined at 48 C.F.R. 2.101 (Oct 1995), consisting of "commercial computer software" and "commercial computer software documentation," as such terms are used in 48 C.F.R. 12.212 (Sept 1995). Consistent with 48 C.F.R. 12.212 and 48 C.F.R. 227.7202-1 through 227.72024 (June 1995), all U.S. Government End Users shall acquire the SOFTWARE with only those rights set forth herein. Manufacturer is Canon Inc./30-2, Shimomaruko 3-chome, Ohta-ku, Tokyo 146-8501, Japan.

7. EXPORT RESTRICTIONS: You agree to comply with all export laws and restrictions and regulations of the country involved, and not to export or re-export, directly or indirectly, the SOFTWARE in violation of any such laws and restrictions and regulations, or without all necessary approvals.

8. SEVERABILITY:

In the event that any provision of this Agreement is declared or found to be illegal by any court or tribunal of competent jurisdiction, such provision shall be null and void with respect to the jurisdiction of that court or tribunal and all the remaining provisions of this Agreement shall remain in full force and effect.

9. CONTROLLING LAW: The terms of this Agreement as it relates to purchases of the Software in the United States of America shall be governed and construed in all respects in accordance with the laws and regulations of the State of New York, without reference to choice of law principles. The terms of this Agreement as it relates to purchases of the Software in Canada shall be governed by the laws of the province of Ontario.

10. OWNERSHIP: All rights, including but not limited to copyrights and trade secret rights, to the SOFTWARE belong to Canon, its affiliated corporations and third party licensors. Your use of the SOFTWARE is subject to the laws of the United States, and Canada, and other applicable copyright and trademark laws, and nothing in this Agreement constitutes a waiver of the rights of Canon, its affiliated corporations and third party licensors under such laws. You only own the CD-ROM media in which the Software is stored. Except as expressly provided herein, no license or right, express or implied, is hereby conveyed or granted by Canon to you for any intellectual property of Canon. Nothing contained in Paragraph 1 shall be construed to give Canon any ownership rights in any images, graphics or textual material that you save in connection with the Software.

You may not modify, remove or delete any or all copyright notices (i) which are contained in the Software, including any copy thereof, and (ii) which are on the original CD-ROM and on the medium of a back-up copy made pursuant to Section 2 above.

11. ACKNOWLEDGEMENT: BY USING THE SOFTWARE, YOU ACKNOWLEDGE THAT YOU HAVE READ THIS AGREEMENT, UNDERSTOOD IT, AND AGREE TO BE BOUND BY ITS TERMS AND CONDITIONS. YOU ALSO AGREE THAT THIS AGREEMENT IS THE COMPLETE AND EXCLUSIVE STATEMENT OF AGREEMENT BETWEEN YOU AND CANON CONCERNING THE SUBJECT MATTER HEREOF AND SUPERSEDES ALL PROPOSALS OR PRIOR AGREEMENTS, VERBAL OR WRITTEN, AND ANY OTHER COMMUNICATIONS BETWEEN THE PARTIES RELATING TO THE SUBJECT MATTER HEREOF. NO AMENDMENT TO THIS AGREEMENT SHALL BE EFFECTIVE UNLESS SIGNED BY A DULY AUTHORIZED OFFICER OF CANON.

Contents

READ CAREFULLY BEFORE USING	2
Canon Software License Agreement	2
Read This First	6
Checking Supplied Accessories	7

Windows

System Requirements	8
What Can Be Accomplished with the Software	9
Canon DIGITAL VIDEO SOLUTION DISK	9
ArcSoft Camera Suite CD-ROM	10
Installing the Software	11
Installing from the Canon DIGITAL VIDEO SOLUTION DISK	11
Installing from the ArcSoft Camera Suite CD-ROM	13
Installing/Uninstalling the USB TWAIN Driver/USB WIA Driver	14
Windows 98	15
Windows Me	20
Windows 2000	24
Windows XP	29
Connecting the Camcorder to a Computer	36
Downloading Still Images/Movies with the ZoomBrowser EX	37
Starting the ZoomBrowser EX (Windows 98/Windows 2000)	37
(Windows Me/Windows XP)	39
The ZoomBrowser EX Camera Window	41
The Browser Window	43
Downloading and Saving Still Images/Movies from the Camcorder	44
Using Other ZoomBrowser EX Functions	46
Using the ZoomBrowser EX Buttons	46
Switching the Display Mode	46
Playing Back Movies From a Memory Card	48
Loading Still Images into TWAIN-Compliant Programs	49
Loading Still Images into ArcSoft PhotoImpression	49
Downloading with the WIA Driver	53
Downloading with the Scanners and Cameras Wizard [Still Images Only]	53
Downloading with Windows Explorer [Still Images/Movies]	54
Downloading with the File Dialog [Still Images Only]	55
Downloading with Windows TWAIN Source [Still Images Only]	56
Printing Still Images (PhotoRecord)	57
The PhotoRecord Window	59
Merging Panoramic Images (PhotoStitch)	60
To Merge Images Registered in ZoomBrowser EX	60

Using a PC Card Reader/Writer	63
Downloading Still Images/Movies with the ZoomBrowser EX	63
Adding Still Images from Your Computer to the Memory Card	64
Uninstalling the Software	66
Uninstalling the ZoomBrowser EX	66
Troubleshooting	67

Macintosh

System Requirements	69
What Can Be Accomplished with the Software	70
Canon DIGITAL VIDEO SOLUTION DISK	70
ArcSoft Camera Suite CD-ROM	71
Installing the Software	72
Installing from the Canon DIGITAL VIDEO SOLUTION DISK	72
Installing from the ArcSoft Camera Suite CD-ROM	73
Connecting the Camcorder to a Computer	74
Connecting to a USB Port	74
Downloading Still Images/Movies with the ImageBrowser	75
Starting the ImageBrowser (Mac OS 8.6-9.2)	75
(Mac OS X)	77
Using a PC Card Reader	78
The ImageBrowser Camera Window	79
The Browser Window	81
Downloading and Saving Still Images/Movies from the Camcorder	82
Playing Back Movies From a Memory Card	84
Printing Still Images (ImageBrowser)	85
The Print Window	87
Merging Panoramic Images (PhotoStitch)	88
To Merge Still Images Registered in ImageBrowser	88
Adding Still Images from Your Computer to the Memory Card	91
Uninstalling the Software	93
Troubleshooting	94

Read This First

You can connect a camcorder with a USB terminal to the PC using a USB cable to download still images recorded on the memory card of the camcorder. You can also use the software provided to sort, store, and print still images.

Disclaimer

- While every effort has been made to ensure that the information contained in this guide is accurate and complete, no liability can be accepted for any errors or omissions. Canon reserves the right to change the specifications of the hardware and software described herein at any time without prior notice.
- No part of this guide may be reproduced, transmitted, transcribed, stored in a retrieval system, or translated into any language in any form, by any means, without the prior written permission of Canon.
- Canon makes no warranties for damages resulting from corrupted or lost data due to mistaken operation or malfunction of the camcorder, the software, memory cards (MultiMediaCards or SD Memory Cards), personal computers, or peripheral devices, or due to use of a memory card not formatted by a Canon camcorder.

Trademark Acknowledgments

- Canon is a trademark of Canon Inc.
- ArcSoft, the ArcSoft logo, ArcSoft PhotoImpression and ArcSoft VideoImpression are trademarks or registered trademarks of ArcSoft, Inc.
- Adobe, Adobe Acrobat and Adobe Photoshop are trademark of Adobe Systems Incorporated.
- iBook and iMac are trademarks of Apple Computer, Inc.
- Macintosh, PowerBook, Power Macintosh and QuickTime are trademarks of Apple Computer Inc., registered in the United States and other countries.
- Microsoft, Windows and Windows NT are either registered trademarks or trademarks of Microsoft Corporation in the United States and/or other countries.
- Other names and products not mentioned above may be registered trademarks or trademarks of their respective companies.

Copyright © Canon Inc. 2002 All rights reserved.

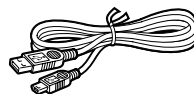
Safety Precautions

- Do not play the supplied CD-ROM(s) in any CD player that does not support data CD-ROMs. Playing the CD-ROM(s) in an audio CD player (music player) could damage the speakers. It is also possible to suffer from hearing loss from listening with headphones to the loud sounds of a CD-ROM played on a music CD player.

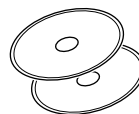
Checking Supplied Accessories

Use the following accessories to download recorded images from a memory card to your computer.

- IFC-300PCU USB Cable



- Canon DIGITAL VIDEO SOLUTION DISK
- ArcSoft Camera Suite CD



- Windows users: Move on to p. 8.
- Macintosh users: Move on to p. 69.

Windows System Requirements

Please install the software on a computer meeting the following minimum requirements.

- Computer Model:** IBM PC/AT compatible
- OS:** Windows 98 (First or Second Edition)
Windows Millennium Edition (Windows Me)
Windows 2000
Windows XP
* Proper operation is not guaranteed on an OS that has been upgraded from a previous version.
- CPU:** Pentium 150 MHz or better
Windows XP: Pentium 300 MHz or better
- RAM:** Windows 98: 32 MB or more
Windows Me/Windows 2000: 64 MB or more
Windows XP: 128 MB or more
- Interface:** USB: only preinstalled Windows 98/Windows Me/Windows 2000/Windows XP systems with built-in USB ports
- Free Hard Disk Space:**
- Canon Utilities
 - ZoomBrowser EX: 120 MB or more (Including the PhotoRecord printing program)
 - PhotoStitch: 40 MB or more
 - Canon Camera TWAIN Driver: 25 MB or more
 - Canon Camera WIA Driver: 25 MB or more
 - ArcSoft PhotoImpression: 125 MB or more
 - ArcSoft VideoImpression: 30 MB or more
- Display:** 800 × 600 pixels/256 colors (8 bit) or better, 1,024 × 768 pixels/High Color (16 bit) or better is recommended
(800 x 600 pixels/High Color (16 bit) is required to use ArcSoft PhotoImpression or ArcSoft VideoImpression)



- The USB interface is only supported for those computers that come with Windows 98/Windows Me/Windows 2000/Windows XP preinstalled and have built-in USB ports.
- Proper operation is not guaranteed on a dual CPU PC or on a user-built PC.
- Proper operation is not guaranteed for all computers that meet the above requirements.
- A CD-ROM drive is required to install the software.
- Connect the USB cable directly to one of the computer's main USB ports. The interface may not function correctly if the camcorder is connected via a USB hub.
- The connection may not operate correctly if you are using other USB devices, excluding USB mice or keyboards, at the same time. If this occurs, disconnect the other devices from the computer and try reconnecting the camcorder.
- Do not connect two or more camcorders to the same computer via the USB interface. The connections may not operate correctly.

What Can Be Accomplished with the Software

This topic introduces the main features of the software programs contained on the CD-ROMs.

E

Canon DIGITAL VIDEO SOLUTION DISK

■ USB TWAIN Driver (Windows 98, Windows 2000)

This driver for Windows 98/Windows 2000 loads camcorder still images/movies into TWAIN-compliant programs, such as ArcSoft PhotoImpression.

■ USB WIA Driver (Windows Me, Windows XP)

This driver for Windows Me/Windows XP starts the Scanners and Cameras Wizard to automatically download camcorder still images/movies to the computer. It also allows you to copy camcorder still images/movies using standard file copying procedures in Windows Explorer (but it cannot upload computer files to the camcorder).

■ ZoomBrowser EX (37)

- Downloading still images/movies from a memory card to your computer.
- Categorizing and Organizing Large Volumes of Images*.
- Searching and Organizing Images Chronologically*.
- Creating Mail Attachments from Images*.

■ PhotoRecord (57)

- Laying Out and Printing Still Images.
- Printing Indexes.

■ PhotoStitch (60)

- Merging Panoramic Images.

*: For instructions on these features, refer to the ZoomBrowser EX Software User Guide.

How to view the ZoomBrowser EX Software User Guide



In order to view the ZoomBrowser EX Software User Guide, it is required that Adobe Acrobat Reader is installed on your computer. If it is not, install it according to "How to install Adobe Acrobat Reader" below.

1. Place the Canon Digital Video Solution Disk in the computer's CD-ROM drive.
The installer panel will be displayed.
2. In the installer panel, click [ZoomBrowser EX Software Guide].
The guide will be displayed.
- If the installer panel does not appear automatically, open the [Readme] and [English] folders on the CD-ROM and double-click the [ZOOMBROWSER EX GUIDE.PDF] file.

What Can Be Accomplished with the Software

How to install Adobe Acrobat Reader

1. Place the Canon Digital Video Solution Disk in the computer's CD-ROM drive.
 2. Open the [Readme], [Acrobat-English] folders.
 3. Double-click the [ar405eng.exe] file to start the installer.
- Follow the on-screen instructions to install Adobe Acrobat Reader.

ArcSoft Camera Suite CD-ROM

■ ArcSoft PhotoImpression

This program allows you to easily convert still images to sepia color, apply other special effects, or to edit them and create greeting cards and calendars.

■ ArcSoft VideoImpression

This program provides simple procedures for editing and applying special effects to movies, or attaching them to your e-mail.

This instruction manual explains how to install the software, what you can do with the main features and how to operate them. For more detailed operational instructions, refer to the ZoomBrowser EX Software User Guide (PDF format) or the Help menu of each software program.

Installing the Software

Installing from the Canon DIGITAL VIDEO SOLUTION DISK

E

Installation Precautions

- Before you attach the camera to the computer with the USB cable for the first time, you must install one of the following drivers onto the computer.
 - Windows 98/Windows 2000: USB TWAIN Driver
 - Windows Me/Windows XP: USB WIA Driver
- There are several limitations to the USB WIA Driver. Before you install it, please read the "USB WIA Driver Installation Precautions" (14).

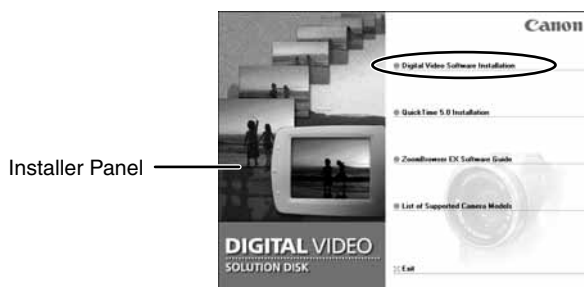
1. Close any programs that are running.

- Users of Windows 2000, Windows XP Professional must first log in as an Administrator to install programs.

2. Set the Canon DIGITAL VIDEO SOLUTION DISK in the computer's CD-ROM drive.

- The installer panel opens automatically.
- If the installer panel does not appear automatically, use the following procedures to display it.
 1. Double-click the [My Computer] icon on the desktop to open it and double-click the CD-ROM icon.
 2. Double-click the [Setup] icon.

3. Click [Digital Video Software Installation].



4. Read the license agreement and click the [Yes] button.

5. Confirm the target folder for the installation and click the [Next] button.

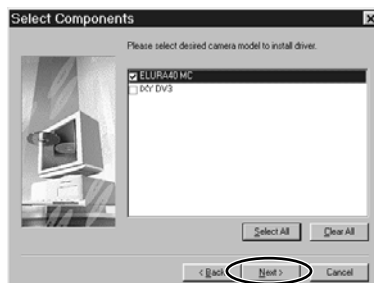
- Normally, select (C:\Program Files\Canon).

Installing the Software

6. Confirm the program selection and click the [Next] button.

- The installation starts.
- Follow the on-screen messages to proceed with the installation.
- If the "Digital signature not found" message appears, click the [Yes] button.

7. Select your camcorder model name and click the [Next] button.



8. After the installation is complete and the installer panel displays again, click the [Exit] button.

- The installer panel disappears.

9. Remove the DIGITAL VIDEO SOLUTION DISK once the installation is complete so that the proper driver may be installed.



Notes:

- The DIGITAL VIDEO SOLUTION DISK is not needed for installing the USB driver. Remove the disk once the installation is complete.
- Continue with the procedures on page 14 to install the driver software to allow the camcorder to be connected to a computer via the USB interface and download images.
- For uninstalling programs contained in the DIGITAL VIDEO SOLUTION DISK such as the ZoomBrowser EX, see "Uninstalling the Software" (66).





Installing from the ArcSoft Camera Suite CD-ROM

E

- 1. Place the ArcSoft Camera Suite CD-ROM into the drive.**
 - 2. Double-click the [My Computer] icon on the desktop** (Windows XP: click the Windows [Start] menu and select [My Computer]) **followed by the [ArcSoft] folder and [Setup] icon.**
 - 3. Select your language and click [OK].**
 - You can select the software you wish to install. ArcSoft PhotoImpression is a software for still images and ArcSoft VideoImpression for movies.
 - Follow the on-screen instructions.
- For uninstalling ArcSoft PhotoImpression or ArcSoft VideoImpression, see “Uninstalling the Software” ( 66).

Installing/Uninstalling the USB TWAIN Driver/USB WIA Driver

The installation procedures vary depending on the computer. Check your OS and proceed to the referred pages.

Windows 98 ( 15), Windows Me ( 20), Windows 2000 ( 24), Windows XP ( 29).

USB WIA Driver Installation Precautions

- You can install the USB WIA Driver if you are using Windows Me/Windows XP. In addition, you should read the “USB WIA Driver Limitations” below before installing the driver.

USB WIA Driver Limitations

- When you have set the WIA Driver to start a particular application program when you connect the camcorder, the program may cause an error message similar to the following to appear: “TWAIN data source not found. Reinstall the scanner software.” If this happens, select [WIA-camera model] in the application program as the TWAIN device.



Notes:

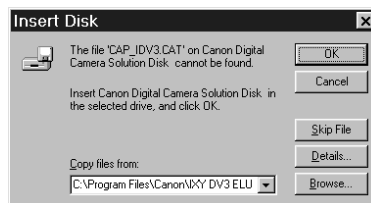
- USB TWAIN Driver is the driver software for Windows 98 and Windows 2000 that is required to load still images/movies into TWAIN-compliant programs, such as ArcSoft PhotoImpression and ArcSoft VideoImpression. Since it is not a stand-alone program, you must always start it from TWAIN-compliant programs.
- USB WIA Driver can only be used with the USB interface in Windows Me/Windows XP. When you connect the camcorder to the computer with a USB cable, the Windows Scanners and Cameras Wizard opens automatically to assist with downloading. This driver also allows you to use Windows Explorer to display thumbnails of the camcorder's still images/movies on the computer and download still images/movies with standard file copying procedures.
- If the “Digital signature not found” message appears, click the [Yes] button.

Installing the USB TWAIN Driver

1. Connect the Power Adapter to the camcorder.
2. Connect the camcorder to the computer using the supplied USB cable (36).
3. Set the camcorder to **CARD PLAY (VCR) mode**.
 - After a moment, a dialog appears, prompting you to insert the DIGITAL VIDEO SOLUTION DISK.



4. Without inserting the DIGITAL VIDEO SOLUTION DISK, click [OK]. The following dialog appears.



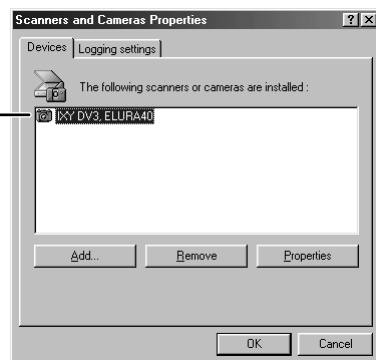
5. Click the [Browse] button.
 - The [Choose Folder] dialog appears.
6. Double-click the drive on which you installed the software (such as C:), and select the [Program Files], [Canon] and [IXY DV3 ELURA40 TWAIN] folders.
7. When you have selected the folder, click [OK].
 - This brings you back to the dialog in step 5.

8. Click [OK]. The USB TWAIN Driver will be installed automatically.

Uninstalling the USB TWAIN Driver

1. Connect the Power Adapter to the camcorder.
2. Connect the camcorder to the computer using the supplied USB cable (📖 36).
3. Set the camcorder to CARD PLAY (VCR) mode.
 - A dialog appears, allowing you to select an application program to start.
4. Click the [Cancel] button.
 - If ZoomBrowser is started, close it.
5. Click the Windows [Start] menu and select [Settings] and [Control Panel].
6. Double-click the [Scanners and Cameras] icon.
 - If you cannot find the [Scanners and Cameras] icon, use the procedures on page 17 to uninstall the driver.
7. Delete the camcorder model name from the [Scanners and Cameras Properties] list.

Your camcorder model name appears here. If it does not, use the procedures on page 17 to uninstall the driver. If a scanner driver has also been installed, its name also appears in the list.



- Select the name of your camcorder model and click the [Remove] button.

8. Click the [Start] menu and select [Programs], [Canon Utilities], [IXYDV3, ELURA40 TWAIN Driver] and [TWAIN Driver Uninstall].

- The uninstall process starts.

Troubleshooting the USB TWAIN Driver Uninstall

If you had problems uninstalling the driver, use the following procedures to remove it.



Notes:

Use the procedures below for the following circumstances too.

- If you do not find the [Scanners and Cameras] icon in the [Control Panel].
- If your camcorder model name does not appear in the [Scanners and Cameras Properties] dialog.
- If you connected the camcorder to the computer via the USB cable before installing the software/driver on the DIGITAL VIDEO SOLUTION DISK.

Leave the camcorder connected to the computer.

1. Click the Windows [Start] menu and select [Settings] and [Control Panel].

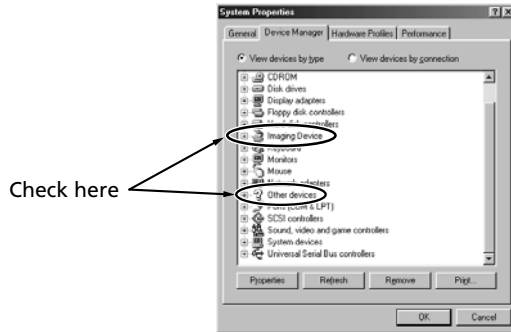
2. Double-click the [System] icon.

- The [System Properties] dialog appears.

3. Click the [Device Manager] tab.

Installing/Uninstalling the USB TWAIN Driver/USB WIA Driver

- 4.** If your camcorder model name appears under the [Other Devices] and/or [Imaging Devices] categories, use the following procedures to delete it.



1. Select the name of the camcorder model and click [Remove].
2. In the confirmation dialog, click [OK].
3. Click [OK] to close the [System Properties] dialog.

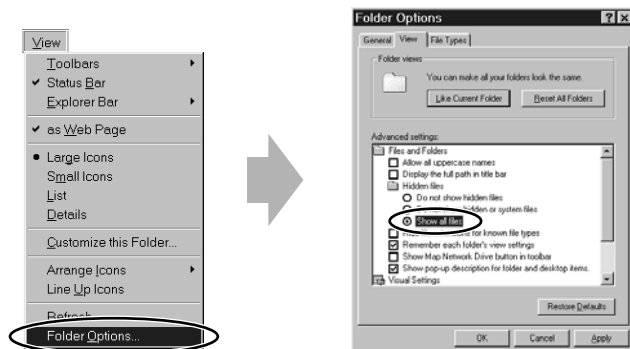
- 5.** Double-click the [My Computer] icon on the desktop followed by the [C:] drive and the [Windows] and [Inf] folders.



If the [Inf] Folder Is Not Visible in the [Windows] Folder

1. Click the [View] menu and select [Folder Options].
2. Click the [View] tab.
3. Set the [Hidden files] section to [Show all files].
4. Click [OK] to close the dialog.

This makes the [Inf] folder and files in the [Inf] folder visible.



6. Find and delete the [Drvdata.bin] and [Drvidx.bin] files.

7. In the [Inf] folder, double-click [Other] folder to open it.

8. Find and delete the [Canon.IncCAP_IDV3] folder.

- If none of the above files are contained in the [Other] folder, you do not need to delete anything.



The [Inf] folder contains numerous files that are critical to the computer's operation. Be extremely careful not to delete the wrong files. If you delete the wrong file, you may be unable to restart Windows.

Installing the USB WIA Driver

- 1. Connect the Power Adapter to the camcorder.**
- 2. Connect the camcorder to the computer using the supplied USB cable (📖 36).**
- 3. Set the camcorder to CARD PLAY (VCR) mode.**
 - After a moment, the Add New Hardware Wizard opens and automatically installs the USB WIA Driver.
 - If you are prompted to restart the computer, restart the computer according to the on-screen messages.

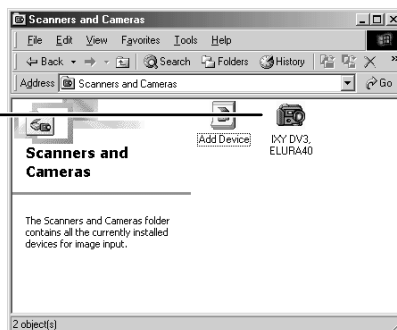
If you have installed the USB WIA Driver, the Scanners and Cameras Wizard starts.

Uninstalling the USB WIA Driver

- 1. Connect the Power Adapter to the camcorder.**
- 2. Connect the camcorder to the computer using the supplied USB cable (📖 36).**
- 3. Set the camcorder to CARD PLAY (VCR) mode.**
 - The Scanners and Cameras Wizard appears.
- 4. Click the [Cancel] button.**
 - If ZoomBrowser is started, close it.
- 5. Click the Windows [Start] menu and select [Settings] and [Control Panel].**
- 6. Double-click the [Scanners and Cameras] folder.**
 - If you cannot find the [Scanners and Cameras] folder, use the procedures on page 21 to uninstall the driver.

7. Delete the camcorder icon from the [Scanners and Cameras] folder.

Your camcorder model name appears here. If it does not, use the procedures below to uninstall the driver. If a scanner driver has also been installed, its name also appears in the list.



- Select the icon of your camcorder model, right-click the mouse button and select [Delete].

8. Click the [Start] menu and select [Programs], [Canon Utilities], [IXYDV3, ELURA40 WIA Driver] and [WIA Driver Uninstall].

- The uninstall process starts.

Troubleshooting the USB WIA Driver Uninstall

If you had problems uninstalling the driver, use the following procedures to remove it.

Notes:

Use the procedures below for the following circumstances too.

- If you do not find the [Scanners and Cameras] folder in the [Control Panel].
- If the camcorder icon does not appear in the [Scanners and Cameras] folder.
- If you connected the camcorder to the computer via the USB cable before installing the software/driver on the DIGITAL VIDEO SOLUTION DISK.

Leave the camcorder connected to the computer.

1. Click the Windows [Start] menu and select [Settings] and [Control Panel].

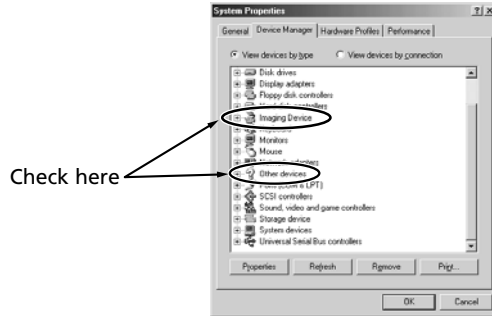
2. Double-click the [System] icon.

- The [System Properties] dialog appears.

3. Click the [Device Manager] tab.

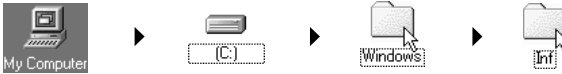
Installing/Uninstalling the USB TWAIN Driver/USB WIA Driver

- 4.** If your camcorder model name appears under the [Other Devices] and/or [Imaging Devices] categories, use the following procedures to delete it.



1. Select the name of the camcorder model and click [Remove].
2. In the confirmation dialog, click [OK].
3. Click [OK] to close the [System Properties] dialog.

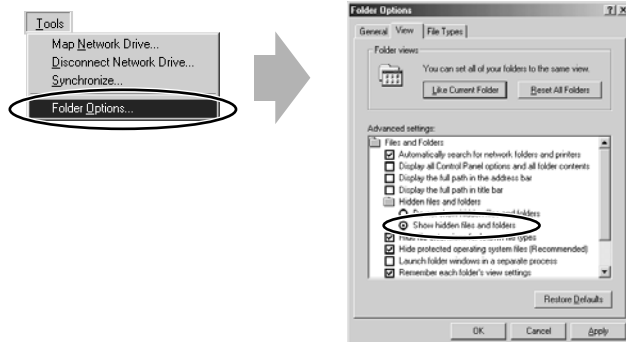
- 5.** Double-click the [My Computer] icon on the desktop followed by the [C:] drive and the [Windows] and [Inf] folders.



If the [Inf] Folder Is Not Visible in the [Windows] Folder

1. Click the [Tools] menu and select [Folder Options].
2. Click the [View] tab.
3. Set the [Hidden files and folders] section to [Show hidden files and folders].
4. Click [OK] to close the dialog.

This makes the [Inf] folder and files in the [Inf] folder visible.



6. Find and delete the [Drvdata.bin] and [Drvidx.bin] files.

7. In the [Inf] folder, double-click [Other] folder to open it.

8. Find and delete the [Canon.IncCAP_IDV3] folder.

- If none of the above files are contained in the [Other] folder, you do not need to delete anything.



The [Inf] folder contains numerous files that are critical to the computer's operation. Be extremely careful not to delete the wrong files. If you delete the wrong file, you may be unable to restart Windows.

Windows 2000

Installing the USB TWAIN Driver



Users of Windows 2000 must first log in as an Administrator to install the driver.

- 1. Connect the Power Adapter to the camcorder.**
- 2. Connect the camcorder to the computer using the supplied USB cable (📖 36).**
- 3. Set the camcorder to CARD PLAY (VCR) mode.**
 - After a moment, the Add New Hardware Wizard opens and automatically installs the USB TWAIN Driver.
 - If you are prompted to restart the computer, restart the computer according to the on-screen messages.

Uninstalling the USB TWAIN Driver

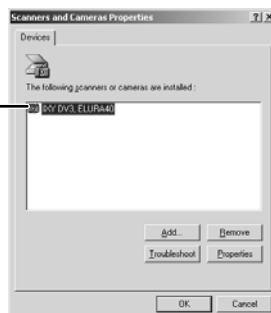


Users of Windows 2000 must first log in as an Administrator to uninstall the driver.

- 1. Connect the Power Adapter to the camcorder.**
- 2. Connect the camcorder to the computer using the supplied USB cable (📖 36).**
- 3. Set the camcorder to CARD PLAY (VCR) mode.**
 - A dialog appears, allowing you to select an application program to start.
- 4. Click the [Cancel] button.**
 - If ZoomBrowser is started, close it.
- 5. Click the Windows [Start] menu and select [Settings] and [Control Panel].**
- 6. Double-click the [Scanners and Cameras] icon.**
 - If you cannot find the [Scanners and Cameras] icon, use the procedures on page 25 to uninstall the driver.

7. Delete the camcorder model name from the [Scanners and Cameras Properties] list.

Your camcorder model name appears here. If it does not, use the procedures below to uninstall the driver. If a scanner driver has also been installed, its name also appears in the list.



- Select the name of your camcorder model and click the [Remove] button.

8. Click the [Start] menu and select [Programs], [Canon Utilities], [IXY DV3, ELURA40 TWAIN Driver] and [TWAIN Driver Uninstall].

- The uninstall process starts.

Troubleshooting the USB TWAIN Driver Uninstall

If you had problems uninstalling the driver, use the following procedures to remove it.



Notes:

Use the procedures below for the following circumstances too.

- If you do not find the [Scanners and Cameras] icon in the [Control Panel].
- If your camcorder model name does not appear in the [Scanners and Cameras Properties] dialog.
- If you connected the camcorder to the computer via the USB cable before installing the software/driver on the DIGITAL VIDEO SOLUTION DISK.



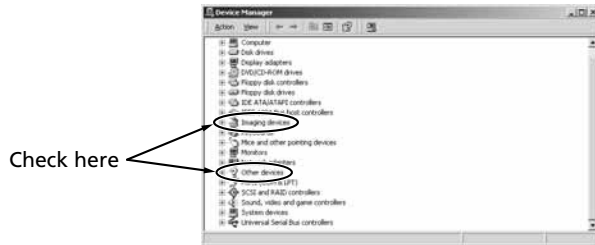
Users of Windows 2000 must first log in as an Administrator to uninstall the driver.

1. Click the Windows [Start] menu and select [Settings] and [Control Panel].

2. Double-click the [System] icon.

Installing/Uninstalling the USB TWAIN Driver/USB WIA Driver

- 3. Click the [Hardware] tab.**
- 4. Click the [Device Manager] button.**
- 5. If your camcorder model name appears under the [Other Devices] and/or [Imaging Devices] categories, use the following procedures to delete it.**
 1. Select the name of the camcorder model, right-click the mouse button and select [Delete].



2. In the confirmation dialog, click [OK].
3. Click [OK] to close the [System Properties] dialog.
 - Remove all copies of your camcorder model name that appear in the [Other Devices] or [Imaging Devices] categories, or that appear more than once in one category.

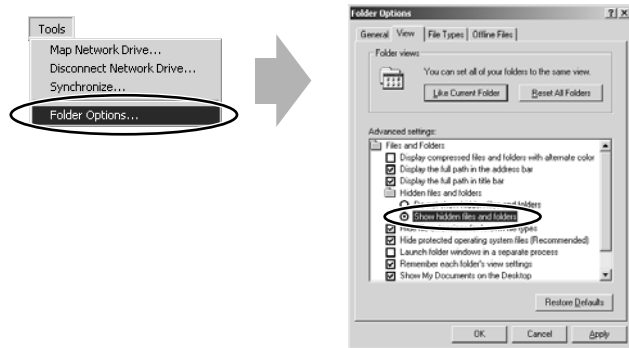
6. Double-click the [My Computer] icon on the desktop, followed by the [C:] drive, and the [Winnt] and [Inf] folders.

If the [Inf] Folder Is Not Visible in the [Winnt] Folder

Use the following procedures to show all files and folders.

1. Click the [Tools] menu and select [Folder Options].
2. Click the [View] tab.
3. In the [Advanced setting] section, set the [Hidden files and folders] category to the [Show hidden files and folders] option.
 - If [Hide extensions for known file types] is selected, remove its check mark.
4. Click [OK] to close the dialog.

This makes the [Inf] folder and the files in the [Inf] folders visible.



7. Look for the file starting with [OEM*].

- A number such as "0" or "1" will appear in place of the asterisk (*) above. You will also find another file called [Oem*.pnf], which will have the same number as the [Oem*] file. The two constitute one set.
- There may be many file sets starting with "Oem".
- If you double-click the [Oem*] file, the Windows Notepad program will start and show the file contents. Click each [Oem*] file until you find one that contains "*** Canon Digital Camera USB SETUP File***" in its first line. When you find the correct file, note down its name and close the Notepad window.

8. Delete the [Oem*] file set.

- Delete all [Oem*] and [Oem*.pnf] files, taking great care to delete the correct files.



The [Inf] folder contains numerous files that are critical to the computer's operation. Be extremely careful not to delete the wrong files. If you delete the wrong file, you may be unable to restart Windows.

Installing the USB WIA Driver



Users of Windows XP Professional must first log in as an Administrator to install the driver.

- 1. Connect the Power Adapter to the camcorder.**
- 2. Connect the camcorder to the computer using the supplied USB cable (36).**
- 3. Set the camcorder to CARD PLAY (VCR) mode.**
 - The USB WIA Driver will be installed automatically.

When the installation is complete, select the application you wish to start.



Note:

- Please set your computer to automatically start an application when the camcorder is connected to the computer. Please set the computer to start either ZoomBrowser EX or the Scanners and Cameras Wizard. If neither of these is selected the computer may not operate properly.

Setting an Application to Start Automatically

You can set your computer to automatically start an application when the camcorder is connected to the computer via the USB cable. Please set the computer to start either ZoomBrowser EX or the Scanners and Cameras Wizard. If neither of these is selected the computer may not operate properly.

- 1. Connect the Power Adapter to the camcorder.**
- 2. Connect the camcorder to the computer using the supplied USB cable (36).**
- 3. Set the camcorder to CARD PLAY (VCR) mode.**
 - If the Event Dialog appears, click [Cancel] to close it.

Installing/Uninstalling the USB TWAIN Driver/USB WIA Driver

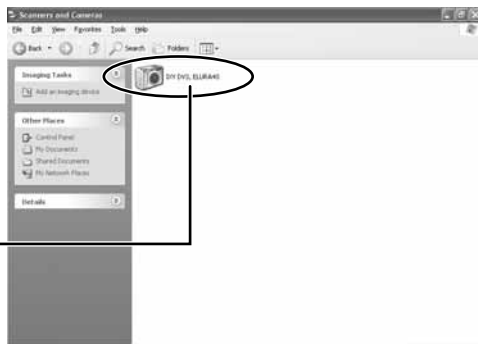
4. From the [Start] menu, click [Control Panel] and the [Printers and Other Hardware] icon.



5. Click the [Scanners and Cameras] icon.



6. Select the camcorder icon and click the [View device properties] icon in [Imaging Tasks].



The name of your camcorder appears.

7. Click the [Events] tab.



When you wish to start ZoomBrowser EX automatically

1. Set [Select an event] to [Default]. Set the [Actions] section to [Take no action].
2. Set [Select an event] to [(camcorder name) Connected] and in the [Actions] section, set [Start this program] to [Canon ZoomBrowser EX].

When you wish to start the Scanners and Cameras Wizard automatically

1. Set [Select an event] to [Default]. In the [Actions] section, set [Start this program] to [Microsoft Scanners and Cameras Wizard].
2. Set [Select an event] to [(camcorder name) Connected], and set the [Actions] section to [Take no action].

8. Click [OK].

- Next time, either ZoomBrowser EX or the Scanners and Cameras Wizard will start automatically.

Uninstalling the USB WIA Driver



Users of Windows XP Professional must first log in as an Administrator to uninstall the driver.

1. Connect the Power Adapter to the camcorder.

2. Connect the camcorder to the computer using the supplied USB cable (36).

3. Set the camcorder to **CARD PLAY (VCR)** mode.

- The Scanners and Cameras Wizard appears.

4. Click the **[Cancel]** button.

- If ZoomBrowser is started, close it.

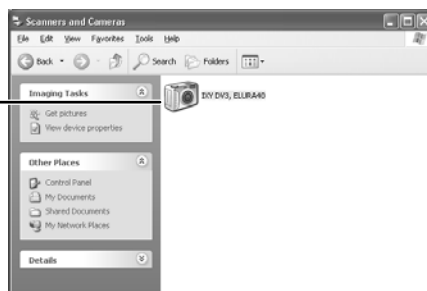
5. Click the **Windows [Start]** menu and select **[Settings]** and **[Control Panel]**.

6. Double-click the **[Scanners and Cameras]** icon.

- If you cannot find the [Scanners and Cameras] icon, use the procedures on page 33 to uninstall the driver.

7. Delete the camcorder icon from the **[Scanners and Cameras]** folder.

Your camcorder model name appears here. If it does not, use the procedures on page 33 to uninstall the driver. If a scanner driver has also been installed, its name also appears in the list.



- Select the icon of your camcorder model, right-click the mouse button and select **[Delete]**.

8. Click the **[Start]** menu and select **[All Programs]**, **[Canon Utilities]**, **[IXY DV3, ELURA40 WIA Driver]** and **[WIA Driver Uninstall]**.

- The uninstall process starts.

Troubleshooting the USB WIA Driver Uninstall

If you had problems uninstalling the driver, use the following procedures to remove it.

Notes:

Use the procedures below for the following circumstances too.

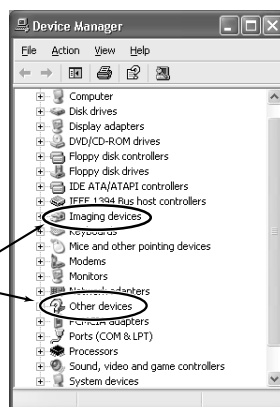
- If you do not find the [Scanners and Cameras] icon in the [Printers and Other Hardware].
- If the camcorder icon does not appear in the [Scanners and Cameras] folder.
- If you connected the camcorder to the computer via the USB cable before installing the software/driver on the DIGITAL VIDEO SOLUTION DISK.



Users of Windows XP Professional must first log in as an Administrator to uninstall the driver.

1. Click the Windows [Start] menu and click [Settings], [Control Panel], [Performance and Maintenance] and [System].
2. Click the [Hardware] tab.
3. Click the [Device Manager] button.
4. If your camcorder model name appears under the [Other Devices] and/or [Imaging Devices] categories, use the following procedures to delete it.

Check here



Installing/Uninstalling the USB TWAIN Driver/USB WIA Driver

1. Select the name of the camcorder model, right-click the mouse button and select [Delete].
2. In the confirmation dialog, click [OK].
3. Click [OK] to close the [System Properties] dialog.
 - Remove all copies of your camcorder model name that appear in the [Other Devices] or [Imaging Devices] categories, or that appear more than once in one category.

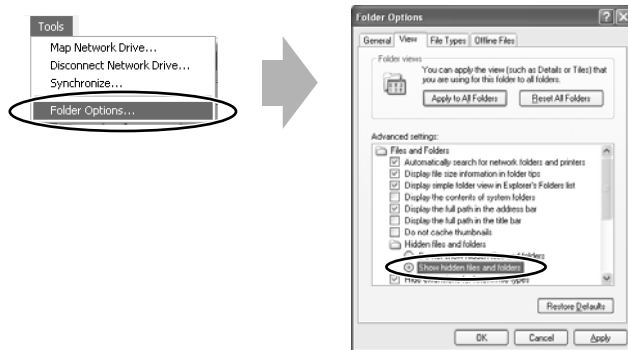
5. From the [Start] menu, click [My Computer], [C:], [Windows] and [Inf] folder in succession.

If the [Inf] Folder Is Not Visible in the [Windows] Folder

Use the following procedures to show all files and folders.

1. Click the [Tools] menu and select [Folder Options].
2. Click the [View] tab.
3. In the [Advanced setting] section, set the [Hidden files and folders] category to the [Show hidden files and folders] option.
 - If [Hide extensions for known file types] is selected, remove its check mark.
4. Click [OK] to close the dialog.

This makes the [Inf] folder and the files in the [Inf] folders visible.



6. Look for the file starting with [OEM*].

- A number such as "0" or "1" will appear in place of the asterisk (*) above. You will also find another file called [Oem*.pnf], which will have the same number as the [Oem*] file. The two constitute one set.
- There may be many file sets starting with "Oem".
- If you double-click the [Oem*] file, the Windows Notepad program will start and show the file contents. Click each [Oem*] file until you find one that contains "*** Canon Digital Camera USB SETUP File***" in its first line. When you find the correct file, note down its name and close the Notepad window.

7. Delete the [Oem*] file set.

- Delete all [Oem*] and [Oem*.pnf] files, taking great care to delete the correct files.



The [Inf] folder contains numerous files that are critical to the computer's operation. Be extremely careful not to delete the wrong files. If you delete the wrong file, you may be unable to restart Windows.

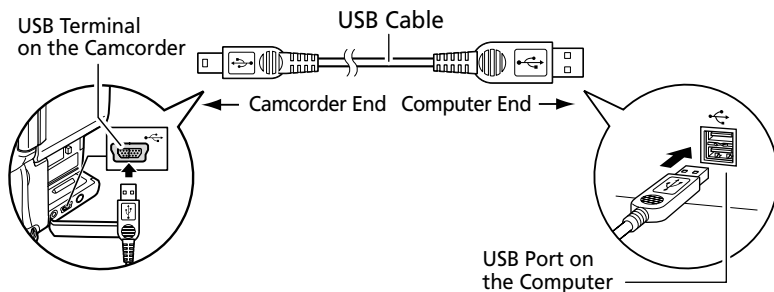
Connecting the Camcorder to a Computer

Connection Precautions

- Make sure the camcorder is being powered using the power adapter before connecting it to a computer.
- Be sure to install the DIGITAL VIDEO SOLUTION DISK before you connect the camcorder to the computer.
- Connect the camcorder directly to a USB port on the computer; not through a hub. The connection may not operate correctly through a hub.
- The connection may not operate correctly if you are using other USB devices, excluding USB mice or keyboards, at the same time. If this occurs, disconnect the other devices from the computer and try reconnecting the camcorder.
- Do not connect two or more camcorders to the same computer via the USB interface. The connections may not operate correctly.
- **Never allow the computer to go into standby (sleep) mode while a camcorder is connected via the USB interface. If it does happen, never disconnect the USB cable. Try to awaken the computer with the camcorder in the connected state. Some computers will not awaken properly if you disconnect the camcorder while they are in standby mode. Please refer to your computer manual for instructions regarding its standby mode.**

1. Attach the supplied USB cable to the computer's USB port and the camcorder's USB Terminal.

- You do not need to turn off the computer for this procedure.
- Refer to your computer manual for the location of the computer's USB ports.
- See your camcorder instruction manual for connecting instructions.



2. The driver (Windows 98/Windows 2000: USB TWAIN Driver, Windows Me/Windows XP: USB WIA Driver) will be installed the first time you connect the USB interface.

Downloading Still Images/Movies with the ZoomBrowser EX



- Observe following precautions when the camcorder's card access indicator is flashing (the camcorder is reading or writing from or to the memory card). Failure to do so may cause memory card data to become corrupted.
 - Do not remove the memory card or detach the USB cable.
 - Do not turn off the camcorder or the computer.
 - Do not change the position of the POWER switch or the TAPE/CARD switch.
- Format the memory card with the camcorder or from the Camera Window (□ 42).
- Still images/movies recorded onto the memory card or downloaded to the hard disk are important original data files. Create a copy of the file first before working on it on your computer.

E

Windows

Starting the ZoomBrowser EX

Windows 98/Windows 2000

1. Insert the memory card to the camcorder.

- When connecting a PC card reader, see "Using a PC Card Reader/Writer" (□ 63).

2. Connect the Power Adapter to the camcorder.

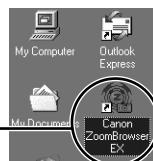
3. Connect the camcorder to the computer using the supplied USB cable (□ 36).

4. Set the camcorder to CARD PLAY(VCR) mode.

5. Double-click the [Canon ZoomBrowser EX] icon on the desktop.

- The first time ZoomBrowser EX starts, a confirmation message appears asking whether you wish to register the [My Pictures] folder in ZoomBrowser EX. Click [Yes] if you plan to use the My Pictures folder.
- ZoomBrowser EX starts and the ZoomBrowser EX Automation Wizard appears.

Canon ZoomBrowser EX Icon



6. Confirm that [USB] and your camcorder model name are selected and click the [OK] button.

7. Select [Display images in the Camera Window] and click [Finish].

- Thumbnail versions of the camcorder still images/movies are displayed in the Camera Window.



Notes:

- When an enormous volume of still images/movies (such as 500 or more) is recorded onto one memory card, transferring them to a computer may take very long.
- In the ZoomBrowser Automation Wizard, you can set the ZoomBrowser EX to automatically carry out an action when you start it by connecting your camcorder to the PC with the camcorder prepared for communications.
- A dialog with the previously selected automated settings will appear the next time you start ZoomBrowser EX.
 1. To use these settings unchanged, click the [Start] button.
 2. To do nothing, click [Cancel].
 3. To change the settings, click [Modify Settings], select the action and click [Finish].
- For more details, please refer to the PDF manual, "ZoomBrowser EX Software User Guide" (p. 10).

Setting the ZoomBrowser EX to Start Automatically

Use the following procedures to have ZoomBrowser EX start automatically without showing the Event dialog.

1. With the camcorder connected to the computer via the USB interface, double-click the [My Computer] icon on the desktop, followed by the [Control Panel] folder and [Scanners and Cameras] icon or folder.

2. Select the icon of your camcorder model.

3. Click the [Properties] button and the [Events] tab.

- A list of application programs that can be automatically started is displayed.

4. Remove the check mark from all programs except ZoomBrowser EX and click [OK].

- You have now set ZoomBrowser EX to start automatically the next time the camcorder is connected.
- If you wish to shut off the auto start, place a check mark in the [Disable device events] option.



For Windows XP Users:

Do not rotate the image in the [Windows Picture and Fax Viewer] or in the explorer view. The file format of the original image will be changed and the image can no longer be displayed in the ZoomBrowser EX or on the camcorder.

- 1. Insert the memory card to the camcorder.**
- 2. Connect the Power Adapter to the camcorder.**
- 3. Connect the camcorder to the computer using the supplied USB cable (36).**
- 4. Set the camcorder to CARD PLAY (VCR) mode.**
 - The Scanners and Cameras Wizard automatically opens. Click the [Cancel] button to close the Wizard.
Windows XP: ZoomBrowser EX will start immediately when it has been set to auto start in the "Setting an Application to Start Automatically" section (29).
- 5. Double-click the [Canon ZoomBrowser EX] icon on the desktop.**
 - ZoomBrowser EX starts and the Browser Window appears.
 - The first time ZoomBrowser EX starts, a confirmation message appears asking whether you wish to register the [My Pictures] folder in ZoomBrowser EX. Click [Yes] if you plan to use the My Pictures folder.
- 6. Click [Canon Camera] in the Tree View area.**
 - Thumbnail versions of the camcorder still images/movies are displayed in the Camera Window.

Downloading Still Images/Movies with the ZoomBrowser EX

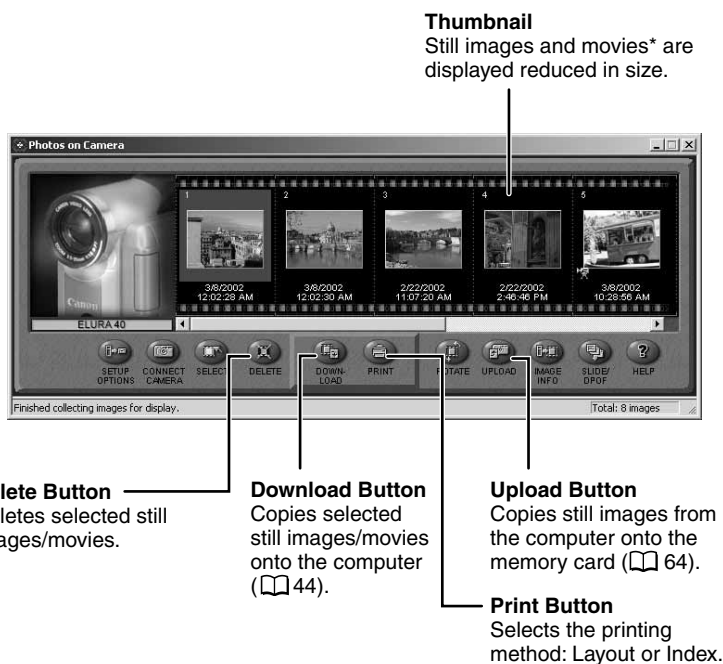
Setting the ZoomBrowser EX to Start Automatically (Windows Me)

Use the following procedures to have ZoomBrowser EX start automatically without showing the Event dialog. For Windows XP, see “Setting an Application to Start Automatically” (□ 29).

- 1. With the camcorder connected to the computer via the USB interface, double-click the [My Computer] icon on the desktop, followed by the [Control Panel] and [Scanners and Cameras] icon.**
- 2. Double-click the icon of your camcorder model.**
- 3. Click the [Events] tab.**
 - A list of application programs that can be automatically started is displayed.
- 4. Remove the check mark from all programs except ZoomBrowser EX and click [OK].**
 - You have now set ZoomBrowser EX to start automatically the next time the camcorder is connected.
 - If you wish to shut off the auto start, place a check mark in the [Do nothing] option.

The ZoomBrowser EX Camera Window

The Camera Window opens when a connection to a camcorder is initiated. Still images/movies will be displayed as thumbnail (small) images. Buttons are activated when a still image/movie is selected.



* Movies are displayed with the first scene as a still image, indicated with a movie icon.



Notes:

About the other buttons

- [SELECT]: Selects or deselects all images.
- [ROTATE]: Rotates the image (90 degrees counterclockwise/90 degrees clockwise/180 degrees).
- [IMAGE INFO]: Displays the number of pixels and file size of the selected image.

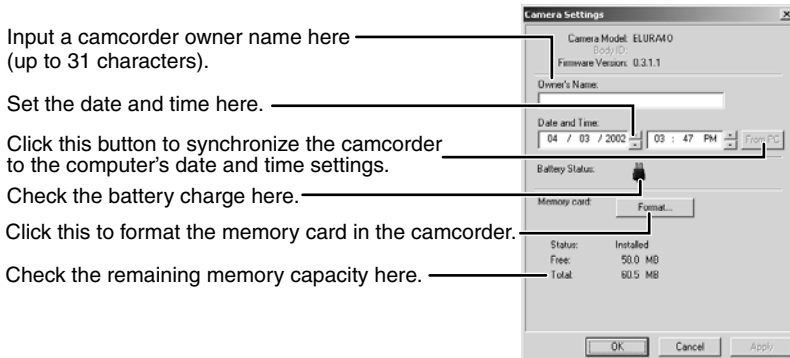
Downloading Still Images/Movies with the ZoomBrowser EX

- [SLIDE/DPOF]:
 - The SLIDE function (selecting a still image to be included in the slide show) cannot be used.
 - The DPOF index print and date/file name settings are not supported by the camcorder. Therefore, setting or erasing a print mark on the camcorder will cancel the index print and date/file name setting.
 - The [DPOF] setting in the ZoomBrowser EX allows marking up to 998 still images for printing. However, the maximum number for print marks on the camcorder is limited to 200. Therefore, setting or erasing a print mark on the camcorder will cancel all print marks after the 200th still image.

How to Check and Change Various Camera Settings

You can adjust the date, time and owner settings in the Camera Settings dialog using the computer when the camcorder is connected. You can also check the battery charge and remaining memory capacity.

1. On the Camera Window, click the [Setup Options] button and select [Camera Settings] from the menu that displays. In the TWAIN Driver, click the [Camera Settings] button to open the Camera Settings dialog.
2. Check or change the settings.



The Browser Window

This section describes the various parts of the Browser Window and explains how to change the way the control panel is displayed.

Image Folder

An image folder is a folder (on your PC), which has been registered in ZoomBrowser EX for storing still images/movies.

Folder

A folder is a subfolder of an image folder that can be used to further classify images.

Tree View

This is the area in the Browser Window where folders registered as image folders are displayed.

The title bar displays the path (folder hierarchy) to the selected image folder or folder.

Browser Display Area

This is the area where thumbnails of the selected image folder and folders are displayed.

Message Area

This is the area where information about the selected image folder and folders is displayed.

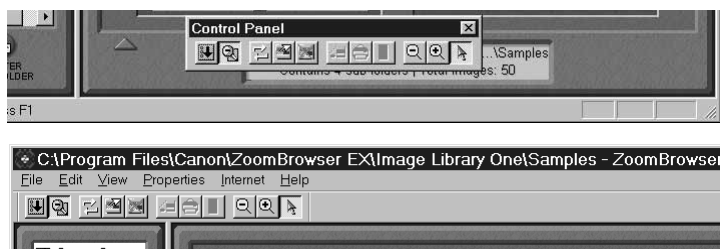
Control Panel

This area contains buttons that allow you to perform a variety of functions.

You can drag this line to change the position of the boundary between the Tree View and the Browser Display Area.

Changing the way the control panel is displayed

- Clicking the ▼ button displays the control panel as a floating toolbar. To return to the original state, click the ▲ button.
- Furthermore, while the control panel is displayed as a floating toolbar, you can place it under the menu or at the very bottom of the Browser Window.



Downloading and Saving Still Images/Movies from the Camcorder

1. Create a new folder for saving still images/movies from the memory card in the camcorder.

- In the Tree View area, right-click the [Image Library One] folder, select [New Folder] from the pop-up menu and input a folder name. In this example, we will input "Travel." Click the [OK] button.

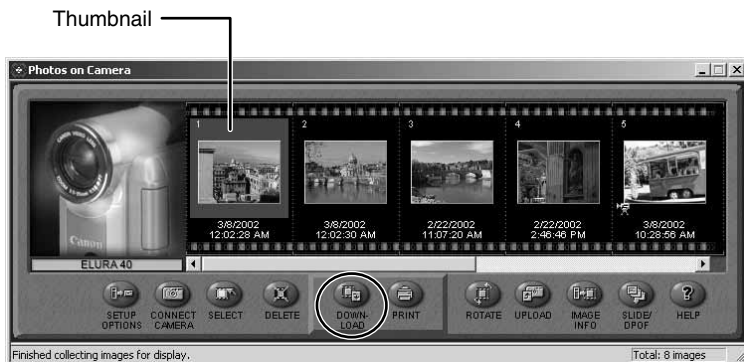


2. Click the new folder in the Tree View area.



3. Select the still images/movies you wish to download from the Camera Window and click the [Download] button.

- Click on thumbnails to select them. The color of the frame(s) around the thumbnail(s) you selected will change to be blue.
- To select multiple still images/movies, hold down the Shift key or Ctrl key while clicking.
- Downloaded still images/movies are saved to the computer disk and appear in the Browser Display Area.



Browser Display Area

Tree View Area



Notes:

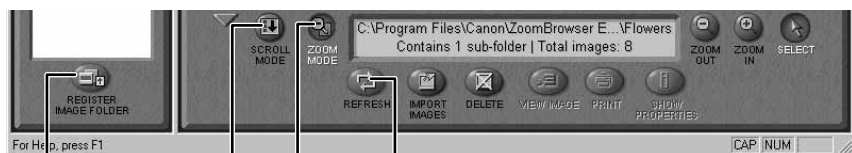
- The folder you created above normally appears within the [C:\Program Files\Canon\ZoomBrowser EX\Image Library One] folder. The downloaded image files are saved to the folder you created.
- You can also download still images/movies by dragging them from the Camera Window and dropping them on the Browser Display Area or Tree View area.
- The [My Camera] function on the ZoomBrowser EX [Edit] menu cannot be used (setting the start-up sound, start-up image etc from the computer)
- To disconnect the camcorder, click the close box at the right of the Camera Window to close it.

Using Other ZoomBrowser EX Functions

This topic introduces additional, convenient ZoomBrowser EX features (Zoom Mode/Scroll Mode/Registering a Folder as an Image Folder/Refreshing a Folder).

Using the ZoomBrowser EX Buttons

The bottom of the ZoomBrowser EX window contains the buttons that control various functions. This topic describes four of those buttons that are particularly convenient.



Scroll Mode Button
Switches to and from the scroll mode.

Refresh Button
Updates the folder contents.

Zoom Mode Button
Switches to and from the zoom mode.

Register Image Folder Button
Registers the selected folder as an Image Folder.

Switching the Display Mode

You can change between the Zoom and Scroll modes to suit your purposes when images are displayed in the Browser Display Area.



Still images/movies inside the sub-folders also display.



Still images/movies inside the sub-folders do not display.


■ Zoom Mode

When you create a folder within a folder, use this mode to display all still images/movies inside the sub-folder too.

■ Scroll Mode

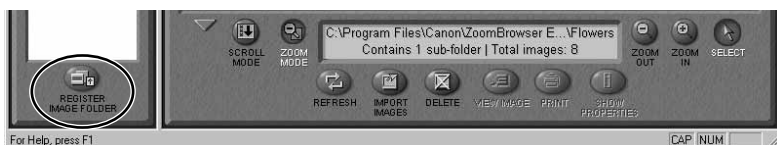
Use this mode to just display the still images/movies within one folder. When there are more still images/movies than can fit in the Browser Display Area, scroll bars appear on the right of the Browser Display Area. The sub-folders only appear as folder icons in this mode.

■ Registering a Folder as a Image Folder

Folders shown in the Tree View area with a  symbol are called Image Folder. ZoomBrowser EX only manages still images/movies contained in these folders and the subfolders nestled within them.

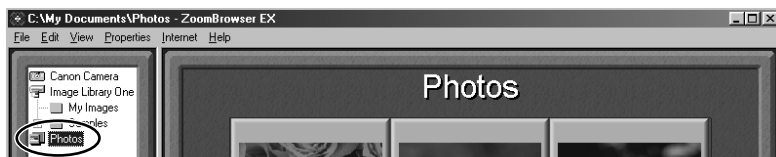
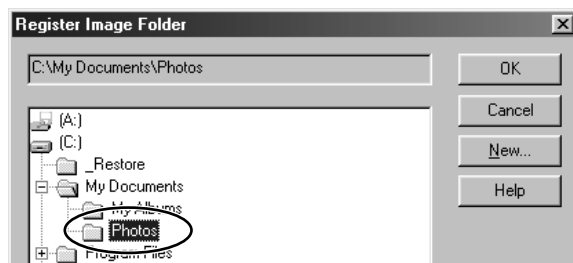
1. Click the [REGISTER IMAGE FOLDER] button.

- The Select Image Folder dialog appears.



2. Select the folder you wish to register and click the [OK] button.

- The folder is registered as an Image Folder.



Using Other ZoomBrowser EX Functions

■ Refreshing a Folder

Only image files that are added, copied or edited using ZoomBrowser EX will display correctly in a folder that is part of a ZoomBrowser EX image folder. If you move or copy image folders with the Windows Explorer program or edit still images/movies with another application, the information contained in ZoomBrowser EX will not be up-to-date. To update a folder, select it and click the [Refresh] button. This will refresh the still images/movies in the selected folder and any subfolders within it.



Note:

- For a more detailed explanation, please refer to the PDF manual, ZoomBrowser EX Software User Guide (📖 9) or the ZoomBrowser EX Help menu.

Playing Back Movies From a Memory Card

When you double-click an image with a movie icon in the Browser Display Area, QuickTime Player starts and plays back the movie.

- Movies are displayed with the first scene as a still image.



Note:

- If QuickTime 3.0 or a later version is not already installed on your computer, install the QuickTime 5.0 program from the Canon DIGITAL VIDEO SOLUTION DISK. Place the disk in the CD-ROM drive and click [QuickTime 5.0 Installation] in the installer panel.

1. Double-click a thumbnail with a movie icon.

- QuickTime Player starts.

2. Click the PLAY button in QuickTime Player.

- The movie will be played back.



Note:

- Do not double-click a movie file (.AVI extension) in the Windows Explorer. That will start Windows Media Player, which may not support this file type. To play back movies, double-click the thumbnail with a movie icon on the ZoomBrowser EX Browser area.

Loading Still Images into TWAIN-Compliant Programs

Windows 98/Windows 2000

E

This section explains how to load still images into the computer using the supplied ArcSoft PhotoImpression software.

For more details, please refer to the PDF manual of ArcSoft PhotoImpression.

To load still images into PhotoImpression, the TWAIN Driver and ArcSoft PhotoImpression must be correctly installed onto the computer. For installation instructions, please refer to "Installing from the ArcSoft Camera Suite CD-ROM" (☞ 13) and "Installing the USB TWAIN Driver" (☞ 15, 24).

Loading Still Images into ArcSoft PhotoImpression

1. Connect the Power Adapter to the camcorder.
2. Connect the camcorder to the computer using the supplied USB cable (☞ 36).
3. Set the camcorder to **CARD PLAY (VCR) mode**.
 - The Event dialog appears, asking you to select an application program to start.
4. Click [Cancel].
5. Click the Windows [Start] menu and select [Programs], [ArcSoft Camera Suite] and [PhotoImpression].
 - PhotoImpression starts.
6. Click the [Camera/Scanner] button at the bottom left of the PhotoImpression window.
7. Select your camcorder model from the [Select Source] list.

Windows



Loading Still Images into TWAIN-Compliant Programs

8. Click the  button.



Loading Still Images with the TWAIN Driver

TWAIN Driver Window

Camera Settings Button

Click here to adjust or check camera settings (□42).

Preferences Button

Click here to adjust or check image transmission settings.

Rotate 90 Degrees Buttons

Click a button to rotate the selected still image 90 degrees left or right.

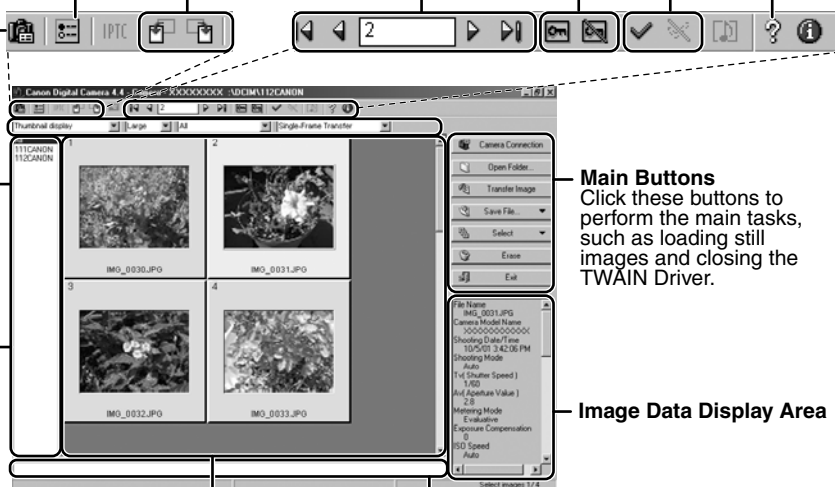
Image Selection Button

Protection On/Off Button

Help Button

Check Mark On/Off Button

You can choose a still image selection method if you click the [Select] button after adding a check mark.



Display Area for Image Folder Selection

Image Display Area

Still images display here when a camcorder is connected.

Comment Box

Input a comment of up to 120 characters here. (You cannot input a comment while the camcorder is connected.)

Display Mode List Box

Click here to select between the Thumbnail and Preview display modes.

Display Size List Box

Click here to select an image display size.

Image Format List Box

Click here to select the format of the still images you wish to display.

Image Transmission Mode List Box

Click here to select to transmit the selected images as a single image or as an index sheet.



Loading Still Images into TWAIN-Compliant Programs

9. Click the [Camera Connection] button.

- The camcorder's still images are displayed in the Thumbnail Display Area.

10. Select the still image(s) you wish to load and click the [Transfer Images] button.

- The TWAIN Driver closes and the still image(s) are displayed in the PhotoImpression window as thumbnails.

11. Click the [OK] button.

- The acquired still image(s) are displayed in the PhotoImpression's main window. To save the acquired still image(s), click the [File] menu of the image editing software and select [Save as]. Input a file name, change the file location and set the file format to JPEG (recommended).

Downloading with the WIA Driver

Windows Me/Windows XP

E

If you have installed the USB WIA Driver, you have the following alternatives for downloading still images/movies to the computer.

- Downloading with the Scanners and Cameras Wizard
- Downloading with Windows Explorer
- Downloading with the File Dialog
- Downloading with Windows TWAIN Source

Downloading with the Scanners and Cameras Wizard [Still Images Only]

- 1. Connect the Power Adapter to the camcorder.**
- 2. Connect the camcorder to the computer using the supplied USB cable (36).**
- 3. Set the camcorder to CARD PLAY (VCR).**
 - The Scanners and Cameras Wizard opens automatically.
- 4. Click the [Next] button.**
- 5. Select the still image you wish to download and click the [Next] button.**
 - To select multiple still images, press and hold the [Ctrl] or [Shift] key on the keyboard while clicking on images. To select all the images, click [Select All].
 - Windows XP: Confirm that a check mark is on the still image you wish to download and click the [Next] button.

Windows



Downloading with the WIA Driver

6. Specify a file name and save location and click the [Finish] button.

- The selected still images are downloaded to the specified folder. If you do not specify a folder, they are saved by default to the [My Pictures] folder within the computer's [My Computer] folder.

Downloading with Windows Explorer [Still Images/Movies]

Images can be downloaded to the computer with Windows Explorer just as you would copy any other file.

1. Connect the Power Adapter to the camcorder.

2. Connect the camcorder to the computer using the supplied USB cable (📖 36).

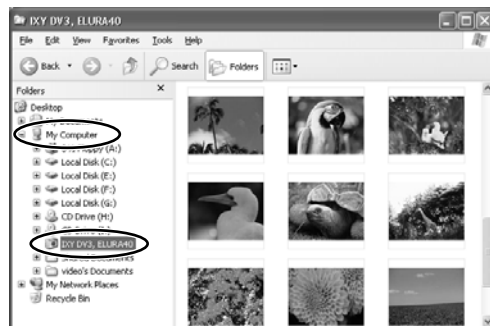
3. Set the camcorder to CARD PLAY (VCR).

- The Scanners and Cameras Wizard opens automatically.

4. Click the [Cancel] button.

5. Start Windows Explorer, double-click [My Computer] and select your camcorder's icon in it.

- The camcorder's images are displayed as thumbnails in the Explorer window.



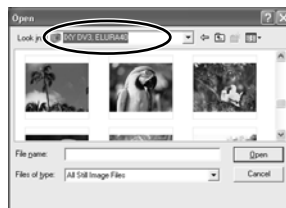
6. Copy images to a folder on the hard disk using standard Explorer file copying procedures.

- Copy by Specifying a Folder
Select a still image/movie in the Explorer window, right-click the mouse, select [Save] and specify a folder. The still image/movie and its thumbnail are downloaded to the specified location.
- Windows Me: If you drag a movie file from the Explorer window and drop it to the specified folder, the [.avi] extension will not be copied. Add the extension back by selecting [Rename Image].

Downloading with the File Dialog [Still Images Only]

You can select a still image from an image editing program such as ArcSoft Photolmpression and save it to the computer. This section explains how to load still images using ArcSoft Photolmpression. For more details, please refer to the PDF manual of ArcSoft Photolmpression.

1. Connect the Power Adapter to the camcorder.
2. Connect the camcorder to the computer using the supplied USB cable (36).
3. Set the camcorder to CARD PLAY (VCR).
 - The Scanners and Cameras Wizard opens automatically.
4. Click the [Cancel] button.
5. Start the image editing program, such as ArcSoft Photolmpression.
 - The camcorder's images are displayed as thumbnails in the Explorer window.
6. Click the [From file] menu and select [Browse].
 - The Open dialog appears.
7. Select [My Computer] and your camcorder's icon in the file list.
 - The camcorder images are displayed as thumbnails.



Downloading with the WIA Driver

8. Select the still images you wish to download and click the [Open] button.

- The selected still images are loaded into the program.
- To save the loaded still images, click the [File] menu and select [Save As]. Input a file name and change the file location and format settings if necessary.

Downloading with Windows TWAIN Source [Still Images Only]

You can also load images into a program with the Microsoft TWAIN Source. (Windows Me: The Microsoft TWAIN source cannot be used with ArcSoft PhotoImpression.)

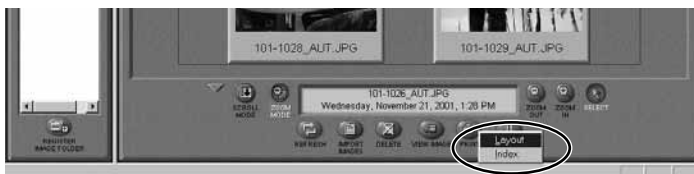
- 1. Connect the Power Adapter to the camcorder.**
- 2. Connect the camcorder to the computer using the supplied USB cable (📖 36).**
- 3. Set the camcorder to CARD PLAY (VCR).**
 - The Scanners and Cameras Wizard opens automatically.
- 4. Click the [Cancel] button.**
- 5. Start a TWAIN-compliant program, such as Adobe Photoshop.**
- 6. Open the dialog in which you can select the TWAIN source and select [WIA-(your camcorder model)].**
- 7. Start TWAIN Source.**
- 8. Select the still image(s) you wish to download and click the [Acquire] button.**
 - The selected still image(s) load into the program.
 - The procedures for starting TWAIN-compliant programs and opening their dialogs may vary between programs. Refer to the respective program manual for more details.

Printing Still Images (PhotoRecord)

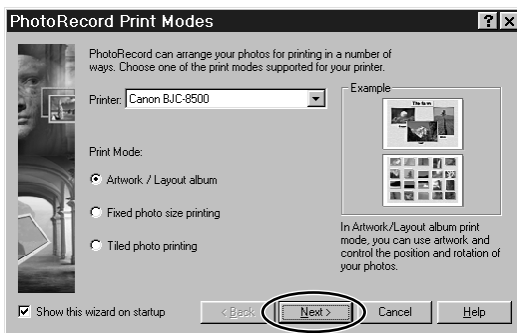
E

Windows

1. Select the still image(s) you wish to print in the Browser Display Area.
 - Movies cannot be printed.
2. Click the [PRINT] button and select [Layout] from the displayed menu.
 - The PhotoRecord printing utility starts and the selected still image(s) will be displayed in a page layout.



3. Select a print mode and click [Next].
 - For the purposes of this example, please select [Artwork/Layout album].



4. In the next dialog, set the paper size and other settings and click [Next].
5. In the last dialog, set the fine settings and click [Finish].
 - The PhotoRecord window appears (📖 59).
 - If you wish to change the layout, set the printing settings in the PhotoRecord window.
6. Click the PhotoRecord [Print] button.
 - The Print dialog appears.

7. Click [OK] to start printing.



Notes:

- When you select the “Artwork/Layout album” option, you can resize or reposition the still images freely for printing. The other print modes allow you to do such things as tile the still images for printing or arrange them for printing on Canon perforated paper. For more details, please refer to the PDF manual, “ZoomBrowser EX Software User Guide” (📖 10).
- When you click the [Print] button and select [Index] from the displayed menu, the Print Index dialog appears. Set the desired thumbnail size and paper size, then click [Print] to start printing the index.



- Do not remove the memory card, detach the USB cable or turn off the camcorder while data is being transferred to the printer (when the camcorder’s card access indicator is flashing). Doing so may cause memory card data to become corrupted.

The PhotoRecord Window

E

Click these buttons to select a layout pattern for each page. Click the arrow ▼ to display a pop-up menu.

Input titles or captions anywhere you wish.

Drag still images to change the layout.

Click this to switch between auto and manual layout mode.

Slide this tab to the left to shrink the image, right to expend it.

Click this to stop importing still images.

Switch between control panel sizes with this.

Click this to set the printing mode or paper size.

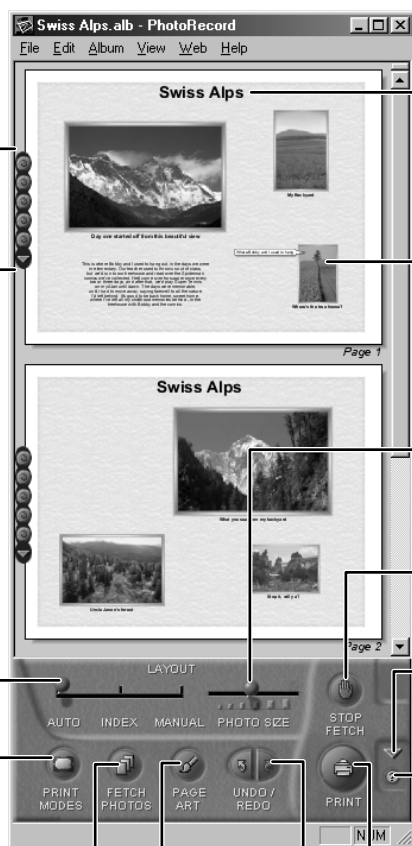
Click this to display Help.

Click this to import still images.

Click this to display the Print Dialog.

Click this to change the page background or borders.

Click these buttons to undo or restore the previous action.



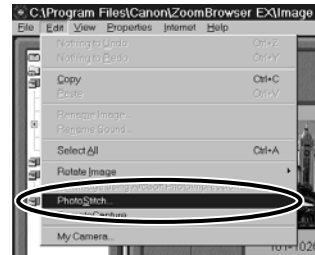
Windows

Merging Panoramic Images (PhotoStitch)

To Merge Images Registered in ZoomBrowser EX

You can merge a series of overlapping images into a single, seamless panorama.

1. Select the still images in the Browser Display Area.
2. Click the [Edit] menu and select [PhotoStitch] to start the program.



3. Select [1.Selection and Arrangement] and then click [Arrange].

- Determine the sequence to be used for merging the still images.
- Operational instructions are displayed in the upper section of the window.



4. Select [2.Merge] and click [Start].



5. Select [3. Save] and then click [Save].



Merging Panoramic Images (PhotoStitch)

Still Images Recorded in Stitch Assist Mode

PhotoStitch automatically arranges still images recorded with the camcorder's Stitch Assist mode in their correct order and orientation, making it easy to merge them. Still images recorded in Stitch Assist mode appear in the Camera Window as shown below.

Still images recorded in Stitch Assist mode have a green stitch mark. Click the stitch mark to start PhotoStitch and merge the image series.



Please refer to the Camcorder Instruction Manual to learn how to record in Stitch Assist mode.

Notes:

- You can record the surroundings in 360 degrees, and stitch them together later to form a 360-degrees cylinder. (In [1. Selection and Arrangement], select [Arrange] and [360 degrees].) By saving this stitched image in QuickTime VR format, you can then get a virtual view of the surroundings. For this, you need to have QuickTime installed on your computer. If it is not already installed, install it from the Canon DIGITAL VIDEO SOLUTION DISK. Place the disk in the CD-ROM drive and click [QuickTime 5.0 Installation] in the installer panel.
- Please refer to the PhotoStitch Help menu for more details.

Using a PC Card Reader/Writer

This section explains only the instructions which differ when connecting a PC Card Reader/Writer instead of the camcorder.

For instruction on how to connect the PC Card Reader/Writer, please refer to its manual.

E

Downloading Still Images/Movies with the ZoomBrowser EX

1. Insert the memory card or loaded PC card adapter into the reader.

2. Start ZoomBrowser EX.

- Double-click the [Canon ZoomBrowser EX] icon on the desktop.
- If you are using Windows Me, a confirmation message will appear the first time ZoomBrowser EX starts, asking whether you wish to register the [My Pictures] folder in ZoomBrowser EX. Click [Yes] if you plan to use the [My Pictures] folder.

3. Click the [Import Images] button and select [From CANON_DV X:\ Dcim].

- Thumbnail versions of the camera images appear in the Camera Window (☞ 41).



Windows

Adding Still Images from Your Computer to the Memory Card

You can copy still images from your computer to the memory card.

1. On the Camera Window, click [UPLOAD].

- A window for selecting still images to be added appears.



2. Select the image file you wish to add and then click [Open].

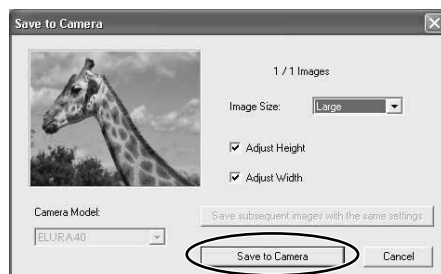
- The [Save to Camera Folder] window appears.

3. Select [Camera Model].

- Select the model name of the camcorder you are using.

4. Select the image size and click [Save to Camera Folder].

- [Large] corresponds to 1024 x 768 and [Small] to 640 x 480.
- [Adjust Height] and [Adjust Width] specify the standard for image enlargement and reduction.

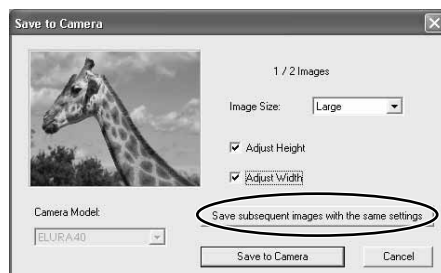




Notes:





- Image enlargement and reduction are not performed when both [Adjust Height] and [Adjust Width] are deselected.
- When [Adjust Height] and [Adjust Width] are both selected, the aspect ratio of the still image (the ratio between the height and width of the image) may change when the still image is resized.
- JPEG, Windows bitmap, TIFF and Windows Metafile format images can be added to a memory card. Note, however, that an image becomes JPEG format when it is stored on the memory card.
- You can also add still images to a memory card by using drag and drop to move the image from the browser area to the camera window.
- **To add multiple still images**

Selecting multiple still images in step 2 of the above procedure undims the [Save subsequent images with the same settings] button on the [Save to Camera Folder] window. Clicking this button makes it possible to add multiple still images with a single setting operation.



Uninstalling the Software

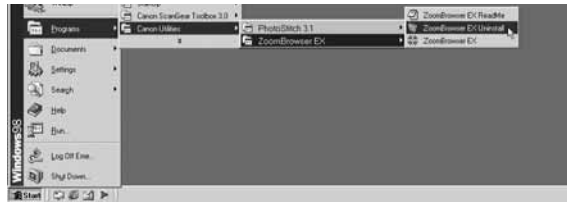
The following explanation uses the procedures for removing ZoomBrowser EX as an example for removing other programs as well.

For uninstalling the USB TWAIN Driver and USB WIA Driver please refer to following sections: Windows 98 ( 16), Windows Me ( 20), Windows 2000 ( 24), Windows XP ( 31).

Uninstalling the ZoomBrowser EX

1. Click the Windows [Start] menu and select [Programs], [Canon Utilities], [ZoomBrowser EX] and [ZoomBrowser EX Uninstall].

- The uninstall utility starts and removes ZoomBrowser EX.



Notes:

- If you have uninstalled ZoomBrowser EX because of a corrupt database file or other problem, please also delete the Database folder, which can be found within the [C:\Program Files\Canon\ZoomBrowser EX] folder.
- PhotoRecord and PhotoStitch can be removed with the same procedures.
- For uninstalling ArcSoft PhotoImpression and ArcSoft VideoImpression, select [Start] menu, [Programs], [ArcSoft Camera Suite] and [Uninstall].

❓ Can't download still images or camcorder is not recognized when the camcorder is connected via the USB interface.

→ Computer doesn't support the USB interface.

The USB interface is not supported for computers not in compliance with the following requirements. Acquire the necessary system to use the USB interface.

Requirements

- Built-in USB interface on a system preinstalled with one of Windows 98/Windows Me/Windows 2000/Windows XP.

→ Camcorder is not correctly connected to the computer.

Read "Connecting the Camcorder to a Computer" (36) and check the connection.

Ensure that you are using the correct cable and that its connectors are in good shape.

→ If you are experiencing operational problems, detach the USB cable from the camcorder and computer and terminate the connection. Restart the computer and then reconnect the camcorder.

→ USB TWAIN Driver or USB WIA Driver is not installed properly.

First uninstall the USB TWAIN/WIA Driver, then reinstall the driver from the Digital Video Solution Disk (remove the check marks from the other programs when prompted to select the programs to be installed). For uninstalling refer to the following section: Windows 98 (16), Windows Me (20), Windows 2000 (24), Windows XP (31). For installing refer to the following section: Windows 98 (15), Windows Me (20), Windows 2000 (24), Windows XP (29).

❓ Can't install the TWAIN Driver, WIA Driver correctly.

First, Check the Following

→ Does the system have a built-in USB port and did it come with Windows 98 (First or Second Edition), Windows Me, Windows 2000, or Windows XP preinstalled?

→ Is the camcorder correctly connected to the computer?


→ Are you using the AC power adapter to power the camcorder?

• If the Problem Is Not Mentioned Above

If the USB TWAIN Driver/USB WIA Driver has not correctly installed, Windows may not recognize the driver. Uninstall the driver according to the instructions (16, 20, 24, 31) and reinstall the USB Driver.

Troubleshooting

- ❓ **ZoomBrowser EX displays a database file related error message (E_Fail error, etc.)**
 - ➔ **ZoomBrowser EX database file may be corrupted.**

Please restore the database using the procedures described in the “Troubleshooting” section of the PDF manual, ZoomBrowser EX Software User Guide ( 9).
- ❓ **Images in the [My Images] folder, or the [Image Library One] folder are not displayed after I installed a new version of ZoomBrowser EX.**
 - ➔ **On the browser window, select [Refresh Online Registered Folders] from the [View] menu.**

Macintosh System Requirements

E

Computer Model:	Power Macintosh, PowerBook, iMac, iBook
OS:	Mac OS 8.6-9.2, Mac OS X (10.1)
CPU:	PowerPC
RAM:	Mac OS 8.6-9.2: 20 MB or more of application memory Mac OS X (Version 10.1): 128 MB or more of RAM
Interface:	USB: only systems equipped with genuine Apple-brand built-in USB interfaces
Free Hard Disk Space:	<ul style="list-style-type: none">• Canon Utilities<ul style="list-style-type: none">- ImageBrowser 120 MB or more- PhotoStitch 40 MB or more• ArcSoft PhotoImpression: 120 MB or more• ArcSoft VideoImpression: 30 MB or more
Display:	800 × 600 pixels/256 colors or better, 1,024 × 768 pixels/32,000 colors or better is recommended



- Proper operation is not guaranteed on a dual CPU PC or on a user-built PC.
- Proper operation is not guaranteed on any particular system, even if it meets the requirements outlined above.
- A CD-ROM drive is required to install the software.
- Connect the camcorder directly to a USB port on the computer; not through a hub. The connection may not operate correctly through a hub.
- The connection may not operate correctly if you are using other USB devices, excluding USB mice or keyboards, at the same time. If this occurs, disconnect the other devices from the computer and try reconnecting the camcorder.
- Do not connect two or more camcorders to the same computer via the USB interface. The connections may not operate correctly.

What Can Be Accomplished with the Software

This topic introduces the main features of the software programs contained on the CD-ROMs.

Canon DIGITAL VIDEO SOLUTION DISK

■ ImageBrowser (75)

- Downloading still images/movies recorded onto a memory card to your computer.
- Categorizing and Organizing Large Volumes of Still Images/Movies*.
- Searching and Organizing Images Chronologically*.
- Creating Mail Attachments from Still Images*.
- Laying Out and Printing Still Images.
- Printing Indexes.

■ PhotoStitch (88)

- Merging Panoramic Images.

*: For instructions on these features, refer to the ImageBrowser Software User Guide.

How to view the ImageBrowser Software User Guide



In order to view the ImageBrowser Software User Guide, it is required that Adobe Acrobat Reader is installed on your computer. If it is not, install it according to "How to install Adobe Acrobat Reader" below.

1. Place the Canon Digital Video Solution Disk in the CD-ROM drive.
 2. Double-click the CD-ROM icon followed by the [Canon Digital Video Installer] icon.
The installer panel will be displayed.
 3. In the installer panel, click [Using the Software] and [ImageBrowser].
The guide will be displayed.
- You can also display it by opening the [Readme] and [English] folders on the CD-ROM and double-clicking [IB_guide.pdf].

How to install Adobe Acrobat Reader

1. Place the Canon Digital Video Solution Disk in the computer's CD-ROM drive.
 2. Open the [Readme], [Acrobat_English] folder.
 3. Double-click the [Reader Installer] file to start the installer.
- Follow the onscreen instructions to install Adobe Acrobat Reader.

■ ArcSoft PhotoImpression

This program allows you to easily convert still images recorded on a memory card to sepia color, apply other special effects, or to edit them and create greeting cards and calendars.

■ ArcSoft VideoImpression

This program provides simple procedures for editing and applying special effects to movies recorded on a memory card, or for attaching them to your e-mail.

This instruction manual explains how to install the software, what you can do with the main features and how to operate them. For more detailed operational instructions, refer to the ImageBrowser Software User Guide (PDF format) or the Help menu of each software program.

Installing the Software

Installing from the Canon DIGITAL VIDEO SOLUTION DISK

1. Close any programs that are running.
2. Set the Canon DIGITAL VIDEO SOLUTION DISK in the computer's CD-ROM drive.
3. **Mac OS 8.6-9.2:** Double click the CD-ROM icon, followed by the [Mac OS 8/9] and [Canon Digital Video Installer] icons.
Mac OS X (10.1): Double click the CD-ROM icon, followed by the [Mac OS X] and [Canon Digital Video Installer] icons.
 - The installer panel appears.
4. Click [Digital Video Software Installation].



5. Follow the on-screen instructions to proceed with the installation.
 - The USB Mounter cannot be used with the ELURA40 MC. Remove the check mark from [Camera USB Mounter 1.5] in the dialog prompting you to select the installation programs.
6. After the installation is complete, restart the computer as prompted.

Installing from the ArcSoft Camera Suite CD-ROM

Installing ArcSoft PhotoImpression

- 1. Close all other programs that are running.**
- 2. Place the ArcSoft Camera Suite CD in the computer's CD-ROM drive.**
- 3. Double-click the CD-ROM icon, followed by the [English] and [PhotoImpression Installer] icons.**
 - Installation starts. Follow the on-screen messages to proceed with the installation.
- 4. Click the [Quit] button when a message tells you that the installation is complete.**
 - Continue by installing ArcSoft VideoImpression.

Installing ArcSoft VideoImpression

- 5. Double-click the [English] folder icon within the CD-ROM, followed by the [VideoImpression 1.6 Installer] icon.**
 - Installation starts. Follow the on-screen messages to proceed with the installation.
- 6. When the installation is complete, restart the computer.**
 - This concludes the process for installing ArcSoft PhotoImpression and ArcSoft VideoImpression.

Connecting the Camcorder to a Computer

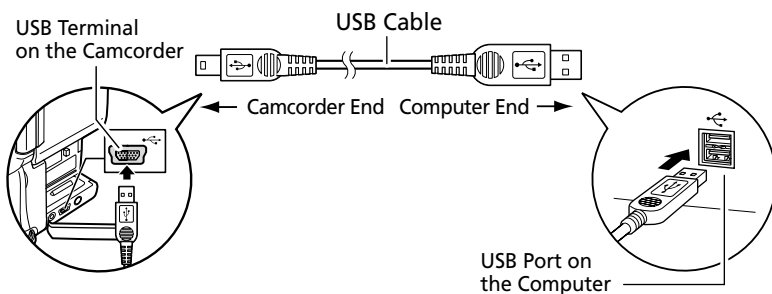
Connecting to a USB Port

Connection Precautions

- Make sure the camcorder is being powered using the power adapter before connecting it to a computer.
- Be sure to install the DIGITAL VIDEO SOLUTION DISK before you connect the camcorder to the computer.
- Connect the camcorder directly to a USB port on the computer; not through a hub. The connection may not operate correctly through a hub.
- The connection may not operate correctly if you are using other USB devices, excluding USB mice or keyboards, at the same time. If this occurs, disconnect the other devices from the computer and try reconnecting the camcorder.
- Do not connect two or more camcorders to the same computer via the USB interface. The connections may not operate correctly.
- **Never allow the computer to go into standby (sleep) mode while a camcorder is connected via the USB interface. If it does happen, never disconnect the USB cable. Try to awaken the computer with the camcorder in the connected state. Some computers will not awaken properly if you disconnect the camcorder while they are in standby mode. Please refer to your computer manual for instructions regarding its standby mode.**

1. Attach the supplied USB cable to the computer's USB port and the camcorder's USB Terminal.

- You do not need to turn off the computer for this procedure.
- Refer to your computer manual for the location of the computer's USB ports.
- See your camcorder instruction manual for connecting instructions.



Downloading Still Images/Movies with the ImageBrowser



- Observe following precautions when the camcorder's card access indicator is flashing (the camcorder is reading or writing from or to the memory card). Failure to do so may cause memory card data to become corrupted.
 - Do not remove the memory card or detach the USB cable.
 - Do not turn off the camcorder or the computer.
 - Do not change the position of the POWER switch or the TAPE/CARD switch.
- Format the memory card with the camcorder or from the Camera Window (80).
- Still images/movies recorded onto the memory card or downloaded to the hard disk are important original data files. Create a copy of the file first before working on it on your computer.

E

Starting the ImageBrowser

Mac OS 8.6-9.2

1. Insert the memory card to the camcorder.

- When connecting a PC card reader, see "Using a PC Card Reader" (78).

2. Connect the Power Adapter to the camcorder.

3. Connect the camcorder to the computer using the supplied USB cable (74).

4. Set the camcorder to CARD PLAY (VCR) mode.

- ImageBrowser starts and the ImageBrowser Automation Wizard dialog appears.

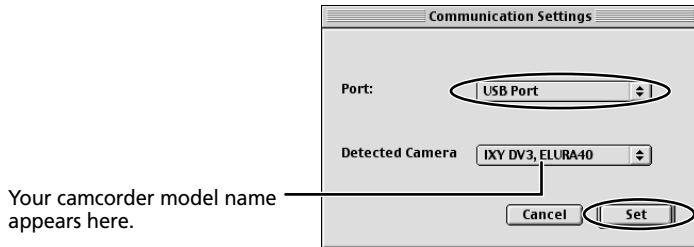
5. Select [Display Images] and click the [OK] button.



- The Communications Settings dialog appears. This dialog only appears the first time the camcorder is connected.

Downloading Still Images/Movies with the ImageBrowser

6. Confirm that [USB port] and your camcorder model name are selected and click the [Set] button.





- The Camera Window opens and displays the camcorder still images/movies as thumbnails.



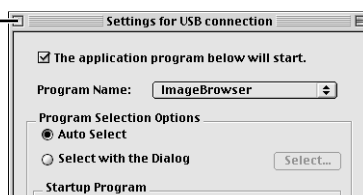
Notes:

- In the ImageBrowser Automation Wizard dialog, you can select the action that is carried out after ImageBrowser starts.
- A dialog with the previously selected automated settings will appear the next time you start ImageBrowser.
 1. To use these settings unchanged, click the [Start] button.
 2. To do nothing, click [Cancel].
 3. To change the settings, click [Settings Change], select the action and click [OK].
- For more details, please refer to the PDF manual, "ImageBrowser Software User Guide" (p. 70).

How to Set ImageBrowser to Not Start Automatically

1. Click the Apple menu  and select [Control Panels] and [Canon ImageBrowser Auto Launch].
 - The Settings for USB Connection dialog will display.
2. Click [The application program below will start] to clear the check mark.
3. Click the close box  at the upper left to close the dialog.
 - ImageBrowser will cease to start automatically thereafter.

Click here to close the dialog.



Starting the ImageBrowser

Mac OS X (10.1)



- Do not connect the camcorder while the Classic environment is started. Likewise, do not start the Classic environment while the camcorder is connected.

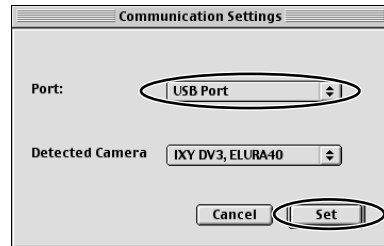
1. Insert the memory card to the camcorder.
2. Connect the Power Adapter to the camcorder.
3. Connect the camcorder to the computer using the supplied USB cable (see 74).
4. Set the camcorder to CARD PLAY (VCR) mode.
5. Double-click the [Canon ImageBrowser] icon on the desktop.
 - If the Canon ImageBrowser icon does not appear on the desktop, double-click the [Canon Utilities] folder on the drive on which the program was installed, followed by the [ImageBrowser] folder and [ImageBrowser] icon.

Downloading Still Images/Movies with the ImageBrowser

6. Click [Canon Camera] in the Explorer View section.

- The Communications Settings dialog is displayed.

7. Confirm that [USB Port] and your camcorder model name are selected and click the [Set] button.



- The Dialog appears only for the first connection.
- The Camera Window will open and display the camera images as thumbnails (☞ 79).

Using a PC Card Reader

For instruction on how to connect the PC Card Reader, please refer to the PC Card Reader Manual.

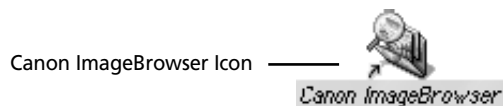
The PC card reader will be treated as a read-only card reader.

1. Insert the memory card or loaded PC card adapter into the reader.

- Mac X (10.1): If a dialog appears, click the red close box.

2. Start ImageBrowser.

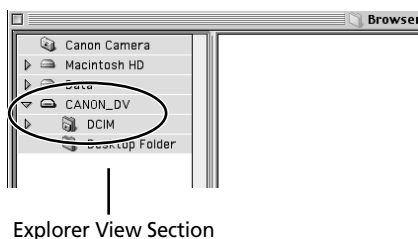
- Double-click the [Canon ImageBrowser] icon on the desktop.



- If the icon does not appear on the desktop, double-click the folder in which you installed the program, followed by the [Canon Utilities] and [ImageBrowser] folders and the [ImageBrowser] file.

3. Double-click the [CANON_DV] and [DCIM] folders in the Explorer View Section.

- The images from the memory card appear as thumbnails in the Camera window (79).

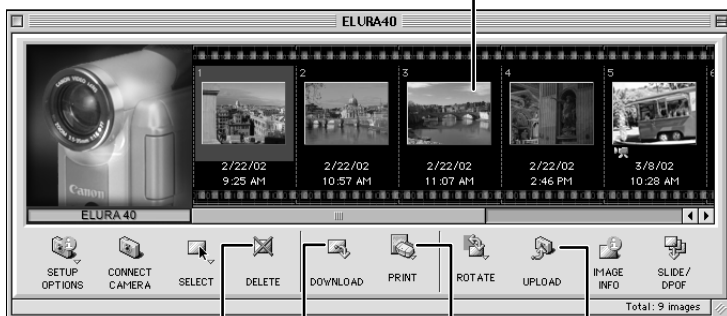


The ImageBrowser Camera Window

The Camera Window opens when a connection to a camcorder is initiated. Still images/movies will be displayed as thumbnail (small) images. Buttons are activated when a still image/movie is selected.

Thumbnail

The still image/movie* is displayed reduced in size.



Delete Button

Deletes selected still images/movies.

Download Button

Copies selected still images/movies onto the computer (82).

Upload Button

Copies still images/movies from the computer onto the memory card (91).

Print Layout Button

Selects the printing method: Layout or Index.

* Movies are displayed with the first scene as a still image, indicated with a movie icon.

Downloading Still Images/Movies with the ImageBrowser



Notes:

About the other buttons

- [SELECT]: Selects or deselects all images.
[ROTATE]: Rotates the image (90 degrees counterclockwise/90 degrees clockwise/180 degrees).
[IMAGE INFO]: Displays the number of pixels and file size of the selected image.
- [SLIDE/DPOF]:
 - The SLIDE function (selecting a still image to be included in the slide show) cannot be used.
 - The DPOF index print and date/file name settings are not supported by the camcorder. Therefore, setting or erasing a print mark on the camcorder will cancel the index print and date/file name setting.
 - The [DPOF] setting in the ImageBrowser allows marking up to 998 still images for printing. However, the maximum number for print marks on the camcorder is limited to 200. Therefore, setting or erasing a print mark on the camcorder will cancel all print marks after the 200th still image.

How to Check and Change Various Camera Settings

You can adjust the date, time and owner settings in the Camera Settings dialog using the computer when the camcorder is connected. You can also check the remaining memory capacity.

1. Click the [Setup Options] button and select [Camera Settings] from the displayed menu.
2. Check or change the settings.

Input a camcorder owner name here
(up to 31 characters).

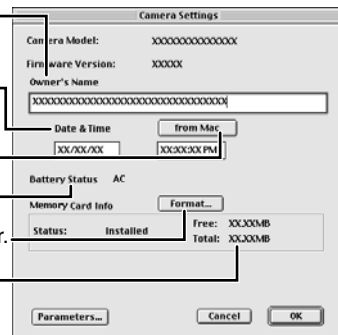
Set the date and time here.

Click this button to synchronize the camcorder
to the computer's date and time settings.

Check the battery charge here.

Click this to format the memory card in the camcorder.

Check the remaining memory capacity here.



The Browser Window

This section describes the various parts of the Browser Window display.

Explorer View Section

Displays the disks and folders that you can use on your computer.

If you click the disclosure triangle on the left edge of the display, you can switch between collapsing and expanding the contents of that folder.

Browser Area

This is the area where thumbnails of still images/movies in the selected folder are displayed.

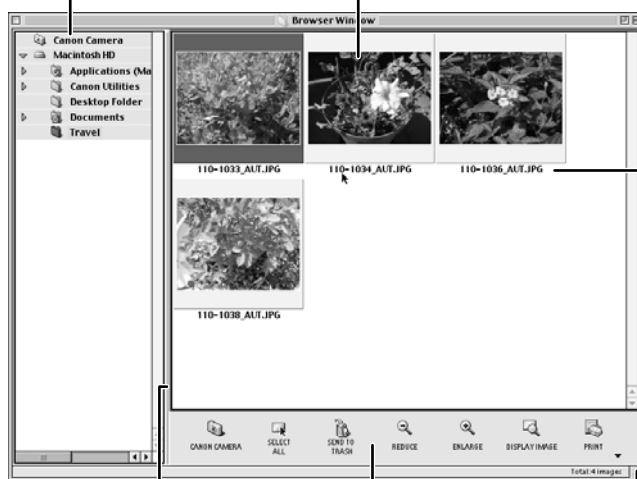


Image Name

This is where the file name of each individual still image/movie is displayed.

You can drag this line to change the position of the boundary between the Explorer View Section and the Browser Area.

Control Panel

This area contains buttons that allow you to perform a variety of functions.

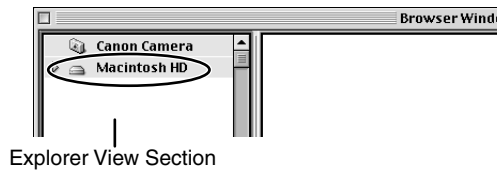
You can drag this part of the frame to change the size of the Browser Window.

Downloading Still Images/Movies with the ImageBrowser

Downloading and Saving Still Images/Movies from the Camcorder

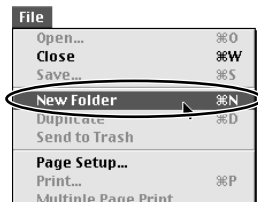
When using the ImageBrowser's Camera Window to download images from the camcorder's memory card, make sure to select [Macintosh HD]. The image will not be saved to the computer when [DCIM] is selected. Follow the instructions below.

1. Select [Macintosh HD] in the Explorer View Section.

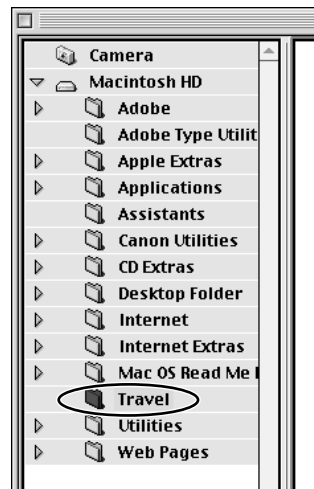


2. Create a new folder for saving images from the memory card in the camcorder.

- Click the [File] menu and select [New Folder]. A folder with the name "Untitled" will be created. Click it to change the folder name as you wish. In this example, we will input "Travel."

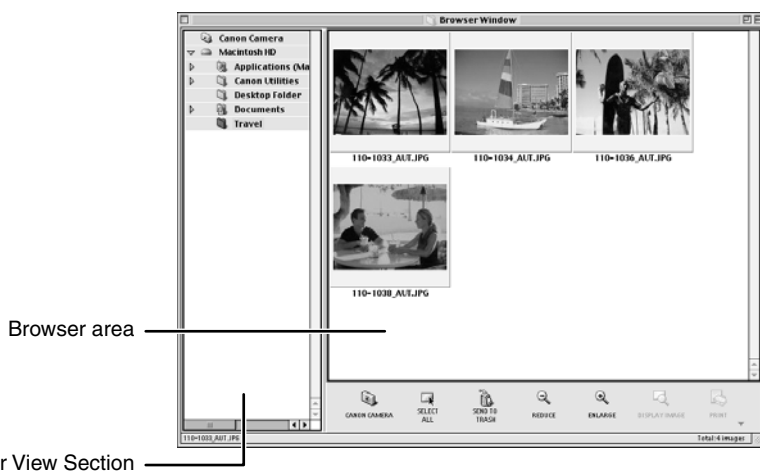
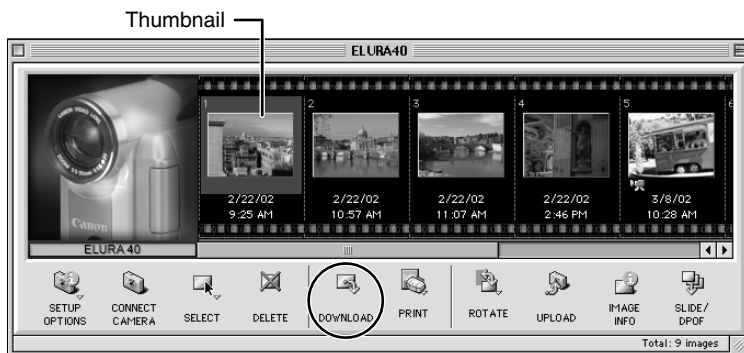


3. In the Explorer View Section, click the newly created folder.



4. Select still images/movies in the Camera window and click the [DOWNLOAD] button.

- Click a thumbnail to select it or press [Shift] and click to select multiple thumbnails. The color of the frame(s) around the thumbnail(s) you selected will change to blue.
- Downloaded still images/movies are saved to the computer and appear in the Browser area.



To disconnect the camcorder, click the close box (Mac OS 8.6-9.2) or the red close box (Mac OS X (10.1)) at the upper left of the Camera Window. The Camera Window will close.

Downloading Still Images/Movies with the ImageBrowser



Notes:

- Double-clicking a still image/movie on the camera window imports it to the computer.
- You can also download still images/movies to the computer by dragging them from the Camera window and dropping them on the Browser area or the Explorer View Section.
- You can select multiple still images/movies by holding down [Shift] or [Option] + [Shift] while clicking.

Playing Back Movies From a Memory Card

When you double-click an image with a movie icon in the Browser Area, QuickTime Player starts and plays back the movie.

- Movies are displayed with the first scene as a still image.

1. Double-click a thumbnail with a movie icon.

- QuickTime Player starts.

2. Click the **PLAY** button in QuickTime Player.

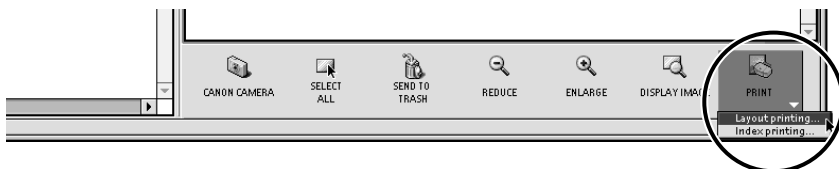
- The movie will be played back.



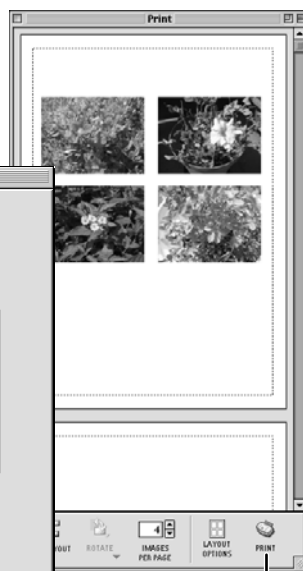
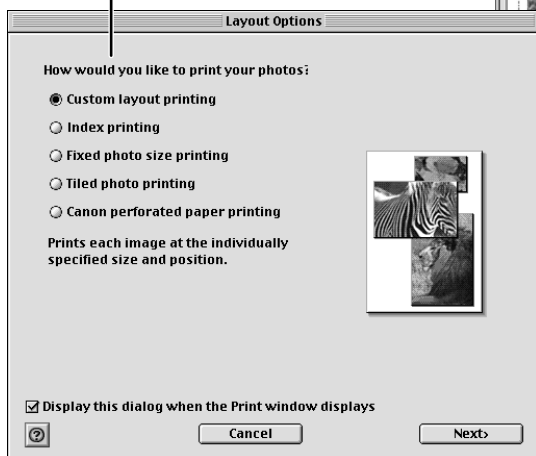
Printing Still Images (ImageBrowser)

E

1. Select the still image(s) you wish to print in the Browser Window.
 - Movies cannot be printed.
2. Click the [PRINT] button and select [Layout printing] from the displayed menu.



Layout Options Window



Print Window

Macintosh

3. In the Layout Options window, select the desired layout and click the [Next] button.
 - Select the [Custom layout printing] option for the purposes of this example.

Printing Still Images (ImageBrowser)

4. In the next window, select a paper size and click the [OK] button.

- The Layout Options window closes and the Print window opens, allowing you to change the layout and printing settings.
- The settings available in Step 4 will vary according to the type of layout selected in Step 3.


5. Click the [PRINT] button in the Print window.

- The Print dialog appears.

6. Click [OK] to start printing.



Note:

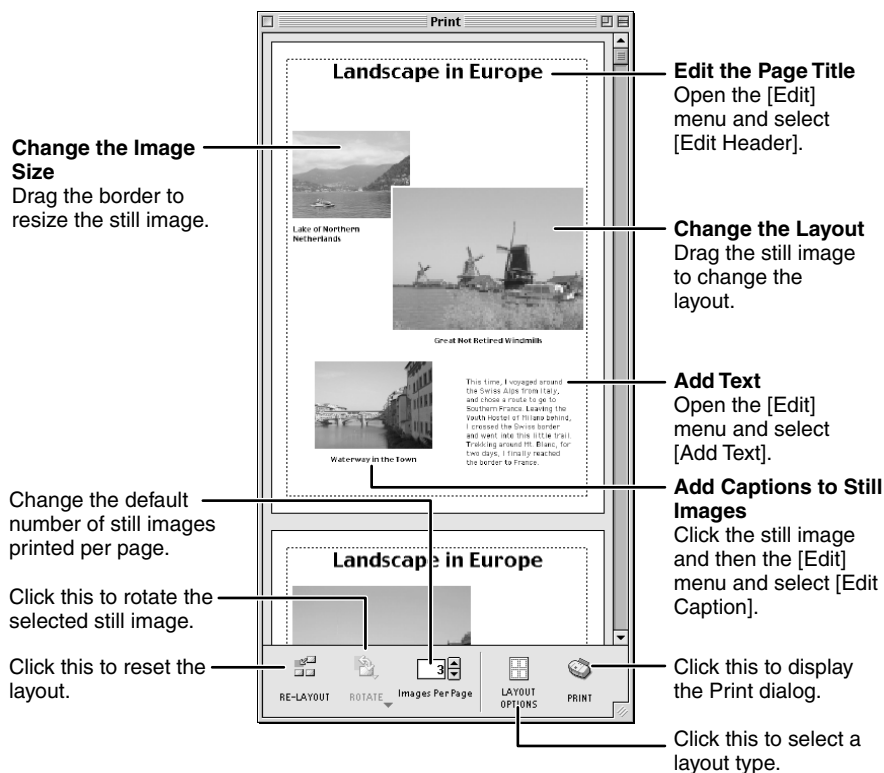
- The Custom Layout printing option in the Layout Options window allows you to freely change the size and position of the still images for printing. The other options allow you to print an index or print onto Canon perforated paper. For more details on the Layout Options window, please refer to the PDF manual, ImageBrowser Software Guide ( 70).



- Do not remove the memory card, detach the USB cable or turn off the camcorder while data is being transferred to the printer (when the camcorder's card access indicator is flashing). Doing so may cause memory card data to become corrupted.

The Print Window

When the Custom layout printing option is selected in the Layout Options window, you can freely change the size and position of the still images for printing.



Merging Panoramic Images (PhotoStitch)

To Merge Still Images Registered in ImageBrowser

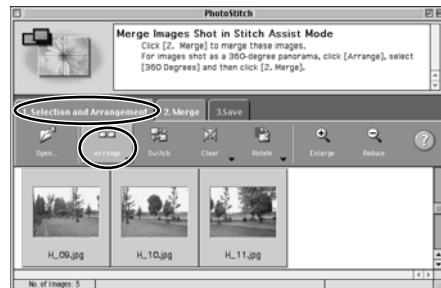
You can merge a series of overlapping images into a single, seamless panorama.

1. Select the still images in the Browser Window.
2. Click the [Edit] menu and select [PhotoStitch] to start the program.



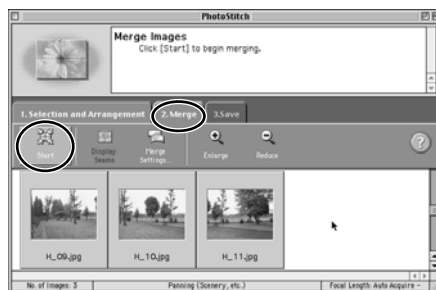
3. Select [1.Selection and Arrangement] and then click [Arrange].

- Determine the sequence to be used for merging the still images.
- Operational instructions are displayed in the upper section of the window.

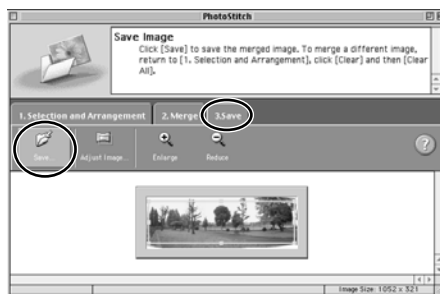


4. Select [2.Merge] and then click [Start].

E



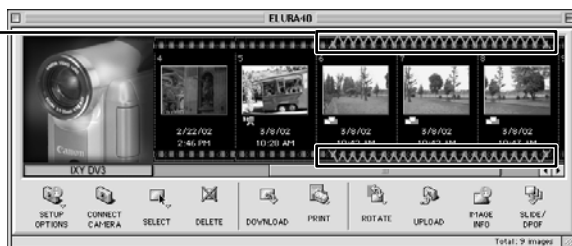
5. Select [3. Save] and then click [Save...].



Still Images Recorded in Stitch Assist Mode

PhotoStitch automatically arranges still images recorded with the camcorder's Stitch Assist mode in their correct order and orientation, making it easy to merge them. Still images recorded in Stitch Assist mode appear in the Camera Window as shown below.

Still images recorded in Stitch Assist mode have a green stitch mark. Click the stitch mark to start PhotoStitch and merge the image series.



Please refer to the Camcorder Instruction Manual to learn how to record in Stitch Assist mode.

Merging Panoramic Images (PhotoStitch)



Notes:

- You can record the surroundings in 360 degrees, and stitch them together later to form a 360-degrees cylinder. (In [1. Selection and Arrangement], select [Arrange] and [360 degrees].) By saving this stitched image in QuickTime VR format, you can then get a virtual view of the surroundings.
- For more details, please refer to the PDF manual, "ImageBrowser Software User Guide" or the PhotoStitch Help menu.

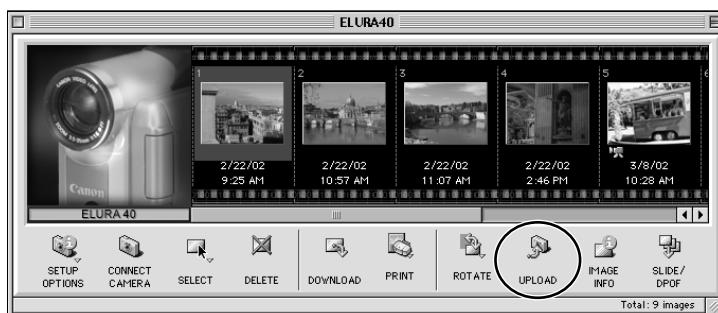
Adding Still Images from Your Computer to the Memory Card

You can copy still images from your computer to the memory card.

E

1. On the camera window, click [UPLOAD].

- A window for selecting images to be added will appear on the display.



2. Select the still image file you wish to add and then click [Open].

- The [Save to Camera] window will appear on the display.

3. Select [Camera model].

- Select the model name of the camcorder you are using.

4. Select [Large] and then click [Save to Camera].

- [Large] corresponds to 1024 x 768 and [Small] to 640 x 480.
- [Adjust Height] and [Adjust Width] specify the standard for image enlargement and reduction.



Macintosh

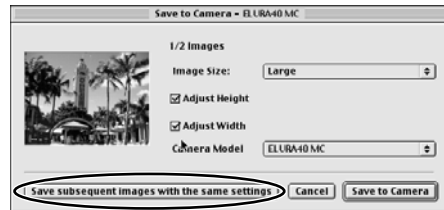
Adding Still Images from Your Computer to the Memory Card



Notes:

- Still image enlargement and reduction are not performed when both [Adjust Height] and [Adjust Width] are deselected.
- When [Adjust Height] and [Adjust Width] are both selected, the aspect ratio of the still image (the ratio between the height and width of the image) may change when the still image is resized.
- Still images in JPEG, TIFF, PICT, and Windows bitmap file format can be added to a memory card. However, the still images are saved in JPEG format on the memory card.
- You can also add still images to a memory card by using drag and drop to move it from the browser area to the Camera window.
- **To add multiple still images**

Selecting multiple still images in step 2 of the above procedure undims the [Save subsequent images with the same settings] button on the [Save to Camera] window. Clicking this button makes it possible to add multiple still images with a single setting operation.



Uninstalling the Software

Uninstalling Application Programs

Move the program's folder into the Trash to uninstall programs such as ImageBrowser and PhotoStitch.

E



Note:

- If the program folders contain subfolders into which still images/movies have been saved, be careful not to accidentally delete those subfolders.

Troubleshooting

This topic explains some of the causes for and solutions to problems with the software.

Can't download images, camcorder is not recognized when the camcorder is connected via the USB interface.

→ Computer doesn't support the USB interface.

The USB interface is not supported for computers not in compliance with the following requirements. Acquire the necessary system to use the USB interface.


Requirements

- Genuine Apple Computer brand computer with a built-in USB interface.

→ There is no memory card in the camcorder.

Insert a memory card into the camcorder.

→ Camcorder is not correctly connected to the computer.

Read "Connecting the Camcorder to a Computer" ( 74) and check the connection.

Ensure that you are using the correct cable and that its connectors are in good shape.

→ If you are experiencing operational problems, detach the USB cable from the camcorder and computer and terminate the connection. Restart the computer and then reconnect the camcorder.