

Canon

DIGITAL VIDEO SOLUTION DISK

Version 5

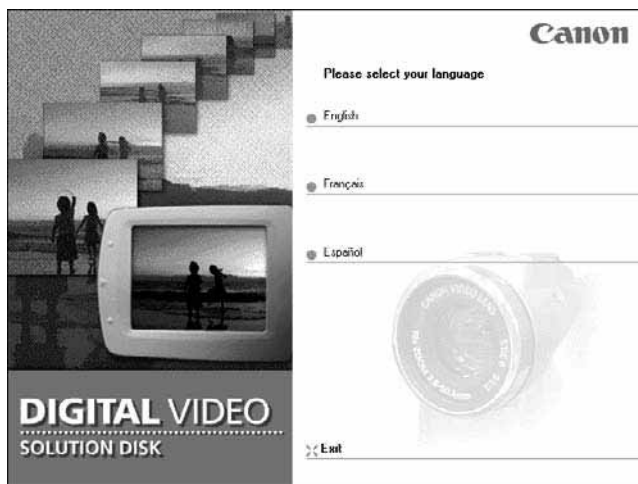
Software Instruction Manual

E

Mode d'emploi du logiciel

F

Manual de Instrucciones del software

Es

READ CAREFULLY BEFORE USING

Canon Software License Agreement

IMPORTANT - READ THIS AGREEMENT BEFORE USING THE SOFTWARE ON THE CD-ROM IN THIS BOX. BY USING THE SOFTWARE, YOU AGREE TO BE BOUND BY THE TERMS OF THIS AGREEMENT.

This is a license agreement (the "Agreement") between you and Canon Inc. ("Canon").

IF YOU DO NOT AGREE TO THE TERMS AND CONDITIONS OF THIS AGREEMENT, DO NOT USE THE SOFTWARE PROGRAM ON THE CD-ROM (INCLUDING ALL SOUND AND IMAGE DATA) AND THE USER MANUAL IN THIS BOX (COLLECTIVELY, THE "SOFTWARE") AND PROMPTLY RETURN THE SOFTWARE TO YOUR POINT OF PURCHASE FOR A REFUND.

In consideration of the right to use the SOFTWARE, you agree to abide by the terms and conditions of this Agreement.

- 1. LICENSE:** Canon grants you the personal, non-exclusive right to use the SOFTWARE only on a single computer. You may physically transfer the SOFTWARE from one computer to another provided that the SOFTWARE is used on only one computer at a time. You shall not install or use the SOFTWARE on a network, multiple CPU, multiple site arrangement, or any other hardware configuration where the SOFTWARE is accessible to more than one CPU or to more than one user.

With respect to the sound and image data ("Data") contained in the Software, which are to be downloaded to the applicable Canon digital camera product, Canon grants you a personal, non-exclusive license to use the Data on a single Canon digital camera product only.

YOU SHALL NOT ASSIGN, SUBLICENSE, RENT, LEASE, LOAN, CONVEY OR OTHERWISE USE, TRANSFER, COPY, TRANSLATE, CONVERT TO ANOTHER PROGRAMMING LANGUAGE, ALTER, MODIFY, DECOMPILE OR DISASSEMBLE THE SOFTWARE, IN WHOLE OR IN PART, EXCEPT AS EXPRESSLY PROVIDED IN THIS AGREEMENT.

- 2. BACK-UP COPY:** You may make one copy of the SOFTWARE solely for back-up purposes, or copy the SOFTWARE onto the permanent storage device (e.g. a hard disk) of your computer and retain the original for back-up purposes. Any other copying of the SOFTWARE is a violation of this Agreement. You must reproduce and include the copyright notice on the back-up copy.
- 3. SUPPORT AND UPDATES:** Neither Canon, nor its subsidiaries, dealers or distributors will be responsible for providing maintenance or support for use of the SOFTWARE. No updates, fixes or support will be made available for the SOFTWARE.
- 4. LIMITED WARRANTY AND LIMITATION OF LIABILITY:** It is your responsibility to choose, maintain and match the hardware and software components of your computer system. Thus Canon does not guarantee uninterrupted service or correction of errors or that the functions or performance of the SOFTWARE will meet your requirements. THE SOFTWARE IS LICENSED ON AN "AS IS" BASIS AND WITHOUT WARRANTY OR CONDITION OF ANY KIND. The CD-ROM storing the SOFTWARE is warranted only against defective material under normal use for a period of ninety (90) days after purchase from an authorized Canon dealer as evidenced by your sales receipt. Your sole remedy for a defective CD-ROM shall be replacement of the same without charge when returned by you at your expense to your point of purchase and proven to be defective upon inspection. The Replacement CD-ROM will be warranted for the remainder of the original ninety (90) day warranty period of the defective CD-ROM. The limited warranty does not apply if the failure of the CD-ROM resulted from accident, abuse or misapplication of the SOFTWARE and shall not extend to anyone other than the original user of the SOFTWARE.

EXCEPT AS SPECIFICALLY SET FORTH IN THIS PARAGRAPH 4, CANON, CANON'S SUBSIDIARIES, DISTRIBUTORS AND DEALERS DISCLAIM ALL WARRANTIES, OR CONDITIONS, EXPRESS OR IMPLIED, INCLUDING ANY WARRANTY OR CONDITION OF MERCHANTABILITY OR FITNESS FOR A PARTICULAR PURPOSE, WITH RESPECT TO THE SOFTWARE.

NEITHER CANON NOR ANY OF CANON'S SUBSIDIARIES, DISTRIBUTORS OR DEALERS IS LIABLE FOR ANY DAMAGES HOWSOEVER CAUSED, INCLUDING WITHOUT LIMITATION, DIRECT, CONSEQUENTIAL OR INCIDENTAL LOSS OR DAMAGE INCLUDING LOSS OF PROFITS, EXPENSE OR INCONVENIENCE HOWSOEVER CAUSED OR ARISING OUT OF THE SOFTWARE OR THE USE THEREOF. NEITHER CANON, NOR ANY OF CANON'S SUBSIDIARIES, DISTRIBUTORS OR DEALERS SHALL HAVE ANY OBLIGATION TO INDEMNIFY YOU AGAINST ANY CLAIM OR SUIT BROUGHT BY A THIRD PARTY ALLEGING THAT THE SOFTWARE OR THE USE THEREOF INFRINGES ANY INTELLECTUAL PROPERTY OF SUCH THIRD PARTY.

SOME STATES, PROVINCES OR LEGAL JURISDICTIONS DO NOT ALLOW THE EXCLUSION OF IMPLIED WARRANTIES, OR THE LIMITATION OR EXCLUSION OF LIABILITY FOR INCIDENTAL OR CONSEQUENTIAL DAMAGES, OR PERSONAL INJURY OR DEATH RESULTING FROM NEGLIGENCE ON THE PART OF THE SELLER, SO THE ABOVE DISCLAIMERS AND EXCLUSIONS MAY NOT APPLY TO YOU.

- 5. TERM:** This Agreement is effective upon your using the SOFTWARE and remains in effect until expiration of all copyright interests in the SOFTWARE unless earlier terminated. You may terminate this Agreement by destroying the SOFTWARE. This Agreement will also terminate without notice to you if you fail to comply with any of the terms of this Agreement and you must then promptly return the SOFTWARE. In addition, Canon may enforce its other legal rights.

6. U.S. GOVERNMENT RESTRICTED RIGHTS NOTICE:

The SOFTWARE is a "commercial item," as that term is defined at 48 C.F.R. 2.101 (Oct 1995), consisting of "commercial computer software" and "commercial computer software documentation," as such terms are used in 48 C.F.R. 12.212 (Sept 1995). Consistent with 48 C.F.R. 12.212 and 48 C.F.R. 227.7202-1 through 227.72024 (June 1995), all U.S. Government End Users shall acquire the SOFTWARE with only those rights set forth herein. Manufacturer is Canon Inc./30-2, Shimomaruko 3-chome, Ohta-ku, Tokyo 146-8501, Japan.

- 7. EXPORT RESTRICTIONS:** You agree to comply with all export laws and restrictions and regulations of the country involved, and not to export or re-export, directly or indirectly, the SOFTWARE in violation of any such laws and restrictions and regulations, or without all necessary approvals.

8. SEVERABILITY:

In the event that any provision of this Agreement is declared or found to be illegal by any court or tribunal of competent jurisdiction, such provision shall be null and void with respect to the jurisdiction of that court or tribunal and all the remaining provisions of this Agreement shall remain in full force and effect.

- 9. CONTROLLING LAW:** The terms of this Agreement as it relates to purchases of the Software in the United States of America shall be governed and construed in all respects in accordance with the laws and regulations of the State of New York, without reference to choice of law principles. The terms of this Agreement as it relates to purchases of the Software in Canada shall be governed by the laws of the province of Ontario.

- 10. OWNERSHIP:** All rights, including but not limited to copyrights and trade secret rights, to the SOFTWARE belong to Canon, its affiliated corporations and third party licensors. Your use of the SOFTWARE is subject to the laws of the United States, and Canada, and other applicable copyright and trademark laws, and nothing in this Agreement constitutes a waiver of the rights of Canon, its affiliated corporations and third party licensors under such laws. You only own the CD-ROM media in which the Software is stored. Except as expressly provided herein, no license or right, express or implied, is hereby conveyed or granted by Canon to you for any intellectual property of Canon. Nothing contained in Paragraph 1 shall be construed to give Canon any ownership rights in any images, graphics or textual material that you save in connection with the Software.

You may not modify, remove or delete any or all copyright notices (i) which are contained in the Software, including any copy thereof, and (ii) which are on the original CD-ROM and on the medium of a back-up copy made pursuant to Section 2 above.

- 11. ACKNOWLEDGEMENT: BY USING THE SOFTWARE, YOU ACKNOWLEDGE THAT YOU HAVE READ THIS AGREEMENT, UNDERSTOOD IT, AND AGREE TO BE BOUND BY ITS TERMS AND CONDITIONS. YOU ALSO AGREE THAT THIS AGREEMENT IS THE COMPLETE AND EXCLUSIVE STATEMENT OF AGREEMENT BETWEEN YOU AND CANON CONCERNING THE SUBJECT MATTER HEREOF AND SUPERSEDES ALL PROPOSALS OR PRIOR AGREEMENTS, VERBAL OR WRITTEN, AND ANY OTHER COMMUNICATIONS BETWEEN THE PARTIES RELATING TO THE SUBJECT MATTER HEREOF. NO AMENDMENT TO THIS AGREEMENT SHALL BE EFFECTIVE UNLESS SIGNED BY A DULY AUTHORIZED OFFICER OF CANON.**

Contents

READ CAREFULLY BEFORE USING	2
Canon Software License Agreement	2
Read This First	6
Checking Supplied Accessories	7

Windows

System Requirements	8
What Can Be Accomplished with the Software	9
Installing the Software	10
Installing from the DIGITAL VIDEO SOLUTION DISK	10
Installing the TWAIN Driver/WIA Driver	14
Connecting the Camcorder to a Computer	16
Downloading Still Images/Movies (ZoomBrowser EX)	17
Starting ZoomBrowser EX	17
Downloading Still Images/Movies to the Computer	19
Using a PC Card Reader/Writer	21
Using Other ZoomBrowser EX Functions	22
Camera Window	22
Download Settings Window	23
Camera Settings Window	23
Main Window	24
Image Viewer Window	26
Playing Back Movies From a Memory Card	27
Running a Slide Show	28
Attaching Still Images to E-mail Messages	30
Printing Still Images (PhotoRecord)	33
Selecting the Print Layout and Album Design	36
The PhotoRecord Window	37
Adjusting Image Quality and Printing (Exif 2.2 Compliant)	39
Selecting the Print Mode and Number of Copies (DPOF Print Settings)	40
Merging Panoramic Images (PhotoStitch)	41
Adding Still Images from Your Computer to the Memory Card	43
Adding Still Images to the Memory Card	43
Adding Sample Images to the Memory Card	45
Adding a Start-up Image to the Memory Card	47
Adding a Start-up Image to the Memory Card	47
Adding New Start-up Images to the DVC My Camera Window	49
Setting ZoomBrowser EX to Start Automatically	50
Uninstalling the Software	53
Uninstalling ZoomBrowser EX	53
Uninstalling the TWAIN Driver/WIA Driver	53
Troubleshooting the TWAIN Driver/WIA Driver Uninstall	55
Troubleshooting	58

System Requirements	60
What Can Be Accomplished with the Software	61
Installing the Software	62
Connecting the Camcorder to a Computer	64
Downloading Still Images/Movies (ImageBrowser)	65
Starting ImageBrowser	65
Downloading Still Images/Movies to the Computer	69
Using a PC Card Reader/Writer	71
Using Other ImageBrowser Functions	72
Camera Window	72
Camera Setting Window	73
Browser Window	74
Image Viewer Window	75
Displaying the Image Information	76
[View] Menu	77
Displaying Images in TimeTunnel	78
Playing Back Movies from a Memory Card	79
Running a Slide Show	80
Attaching Still Images to E-mail Messages	81
Printing Still Images (ImageBrowser)	83
The Print Window	85
Adjusting Image Quality and Printing (Exif 2.2 Compliant)	86
Selecting the Print Mode and Number of Copies (DPOF Print Settings)	88
Merging Panoramic Images (PhotoStitch)	89
Adding Still Images from Your Computer to the Memory Card	91
Adding Still Images to the Memory Card	91
Adding Sample Images to the Memory Card	93
Adding a Start-up Image to the Memory Card	95
Adding a Start-up Image to the Memory Card	95
Adding New Start-up Images to the DVC My Camera Window	97
Uninstalling the Software	98
Troubleshooting	99

Read This First

You can connect a camcorder to the computer using a USB cable to download still images recorded on the memory card of the camcorder. You can also use the provided software to sort, store, and print still images.

Disclaimer

- While every effort has been made to ensure that the information contained in this guide is accurate and complete, no liability can be accepted for any errors or omissions. Canon reserves the right to change the specifications of the hardware and software described herein at any time without prior notice.
- No part of this guide may be reproduced, transmitted, transcribed, stored in a retrieval system, or translated into any language in any form, by any means, without the prior written permission of Canon.
- Canon makes no warranties for damages resulting from corrupted or lost data due to mistaken operation or malfunction of the camcorder, the software, memory cards (MultiMediaCards or SD Memory Cards), personal computers, or peripheral devices, or due to use of a memory card not formatted by a Canon camcorder.

Trademark Acknowledgments

- Canon is a registered trademark of Canon Inc.
- Macintosh is a trademark of Apple Computer Inc., registered in the United States and other countries.
QuickTime is a trademark of Apple Computer, Inc.
- Microsoft®, Windows® and Windows Media® are either registered trademarks or trademarks of Microsoft Corporation in the United States and/or other countries.
- Other names and products not mentioned above may be registered trademarks or trademarks of their respective companies.

Copyright © Canon Inc. 2003 All rights reserved.

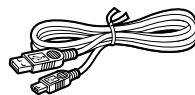
Safety Precautions

Do not play the supplied CD-ROM(s) in any CD player that does not support data CD-ROMs. Playing the CD-ROM(s) in an audio CD player (music player) could damage the speakers. It is also possible to suffer from hearing loss from listening with headphones to the loud sounds of a CD-ROM played on a music CD player.

Checking Supplied Accessories

Use the following accessories to download recorded images from a memory card to your computer.

- IFC-300PCU USB Cable



- DIGITAL VIDEO SOLUTION DISK



- Windows users: Move on to p. 8.
- Macintosh users: Move on to p. 60.

The explanations in this manual use mainly Windows 98 and Mac OS 9.2 screen shots.

Windows System Requirements

Please install the software on a computer meeting the following minimum requirements.

- OS:** Windows 98 (First or Second Edition)
Windows Me
Windows 2000
Windows XP (Home Edition, Professional)
* Proper operation is not guaranteed on an OS that has been upgraded from a previous version.
- Computer Model:** Computers that come with above OS preinstalled and have built-in USB ports.
- CPU:** Windows 98/Windows Me/Windows 2000: Pentium 150 MHz or better
Windows XP: Pentium 300 MHz or better
- RAM:** Windows 98/Windows Me/Windows 2000: 64 MB or more
Windows XP: 128 MB or more
- Interface:** USB: only preinstalled Windows 98/Windows Me/Windows 2000/Windows XP systems with built-in USB ports
- Free Hard Disk Space:**
- Canon Utilities
 - ZoomBrowser EX: 120 MB or more (Including the PhotoRecord printing program)
 - PhotoStitch: 40 MB or more
 - Canon Camera TWAIN Driver: 25 MB or more
 - Canon Camera WIA Driver: 25 MB or more
- Display:** 800 × 600 pixels/High Color (16 bit) or better, 1,024 × 768 pixels or better is recommended



- The USB interface is only supported for those computers that come with Windows 98/Windows Me/Windows 2000/Windows XP preinstalled and have built-in USB ports.
- Proper operation is not guaranteed on a dual CPU PC or on a user-built PC.
- Proper operation is not guaranteed on any particular system, even if it meets the requirements outlined above.
- A CD-ROM drive is required to install the software.
- Connect the USB cable directly to one of the computer's main USB ports. The interface may not function correctly if the camcorder is connected via a USB hub.
- The connection may not operate correctly if you are using other USB devices, excluding USB mice or keyboards, at the same time. If this occurs, disconnect the other devices from the computer and try reconnecting the camcorder.
- Do not connect two or more camcorders to the same computer via the USB interface. The connections may not operate correctly.
- Not all operations performed with a connection to a USB 2.0 compatible board can be guaranteed.

What Can Be Accomplished with the Software

E

Windows

This topic introduces the main features of the software programs contained on the DIGITAL VIDEO SOLUTION DISK.

■ **TWAIN Driver** (14)

TWAIN Driver is the driver software for Windows 98 and Windows 2000 that is required for downloading still images/movies from a memory card to a computer.

■ **WIA Driver** (15)

WIA Driver is the driver software for Windows Me and Windows XP that is required for downloading still images/movies from a memory card to a computer.

■ **ZoomBrowser EX** (17)

- Downloading still images/movies from a memory card to your computer.
- Categorizing and organizing large volumes of images.
- Creating mail attachments from images. (Your e-mail program needs to be enabled as MAPI client.)

■ **PhotoRecord** (33)

- Laying out and printing still images.
- Printing indexes.
- Creating still image albums.

■ **PhotoStitch** (41)

Merging Panoramic Images.

This instruction manual explains how to install the software, what you can do with the main features and how to operate them. For more detailed perational instructions, refer to the Help menu of each software program.

Installing the Software

Installing from the DIGITAL VIDEO SOLUTION DISK



- Before you attach the camcorder to the computer with the USB cable for the first time, you must install one of the following drivers onto the computer.
Windows 98/Windows 2000: TWAIN Driver (📖 14)
Windows Me/Windows XP: WIA Driver (📖 15)
- Users of Windows 2000 or Windows XP must first log in as an Administrator to install programs.

1. Close any programs that are running.

2. Set the DIGITAL VIDEO SOLUTION DISK in the computer's CD-ROM drive.

- The installer panel opens automatically.
- If the installer panel does not appear automatically, use the following procedures to display it.

Windows 98, Windows Me, Windows 2000:

1. Double-click the [My Computer] icon.
2. Right-click the CD-ROM icon and select [Open] from the displayed menu.
3. Double-click the [Setup.exe] icon.

Windows XP:

1. Select [My Computer] from the [Start] menu.
2. Right-click the CD-ROM icon and select [Open] from the displayed menu.
3. Double-click the [Setup.exe] icon.

Depending on the setting of your computer, the file extension “.exe” may not appear.

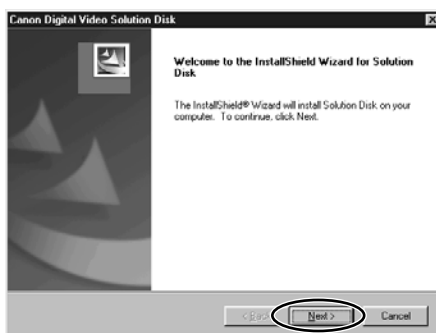
3. Select your language.

4. Click [Digital Video Software Installation].

Installer Panel



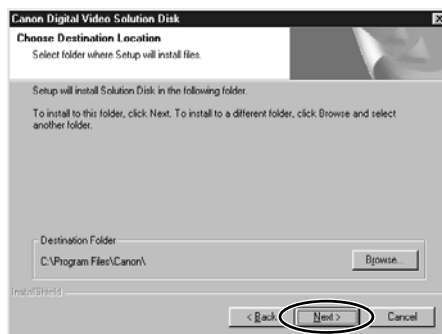
5. Click [Next].



6. Read the license agreement and click [Yes].

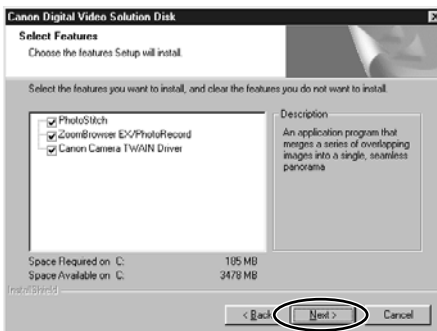
7. Confirm the installation destination and click [Next].

Normally, select (C:\Program Files\Canon\).



8. Select the programs you wish to install and click [Next].

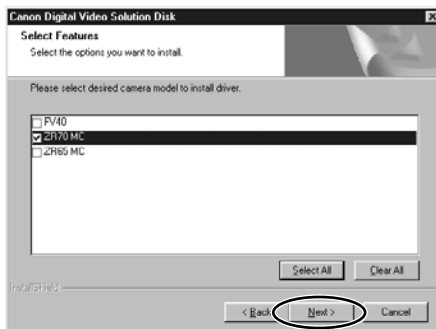
Confirm that there is a check mark beside the name of the program you wish to install.



Installing the Software

9. Select your camcorder model name and click [Next].

Place a check mark beside your camcorder model name.



10. Review the installation settings and click [Next].

Installation starts.

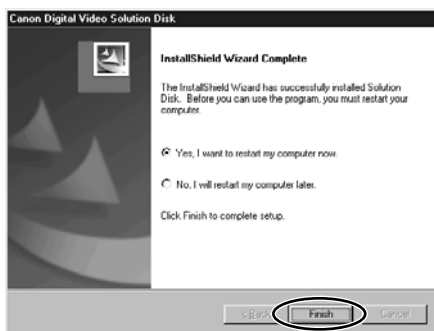


11. When the following window appears, click [OK].

This window only appears if you installed the TWAIN Driver or the WIA Driver.



- 12.** When installation is complete, select [Yes, I want to restart my computer now.] and click [Finish].



- 13.** When the computer has restarted and the regular desktop screen is displayed, remove the DIGITAL VIDEO SOLUTION DISK from the CD-ROM drive.



- When installation is complete, remove the DIGITAL VIDEO SOLUTION DISK before you connect the camcorder to the computer.
- At this point, the files for the TWAIN Driver or WIA Driver have only been copied to your computer. To download still images/movies via USB connection, finish installing the TWAIN driver or the WIA driver.

Installing the Software

Installing the TWAIN Driver/WIA Driver

When you have installed the software from the DIGITAL VIDEO SOLUTION DISK, go on to install the TWAIN Driver or the WIA Driver.

Windows 98/Windows 2000

TWAIN Driver

TWAIN Driver is the driver software for USB connection to Windows 98 and Windows 2000 that is required to download still images/movies into ZoomBrowser EX.



Users of Windows 2000 must first log in as an Administrator to install the driver.

- 1. Insert a memory card containing still images/movies into the camcorder.**
- 2. Connect the Power Adapter to the camcorder.**
- 3. Turn the POWER switch to PLAY (VCR) and move the TAPE/CARD switch to CARD.**
Wait until the card access indicator stops flashing.
- 4. Connect the camcorder to the computer using the supplied USB cable (□ 16).**

- After a few moments, a message such as “New Hardware Found” appears and the TWAIN driver will be installed automatically.
- If you are prompted to restart the computer, restart the computer.
- When installation is complete, a window appears allowing you to select an application program to start.

See *Downloading Still Images/Movies* (□ 17) for how to start ZoomBrowser EX and download still images/movies to the computer.

WIA (Windows Image Acquisition) Driver

WIA Driver is the driver software for USB connections to Windows Me and Windows XP that is required to download still images/movies into ZoomBrowser EX.



○ Read carefully before installing the WIA Driver:

- When you have set the WIA Driver to start a particular application program when you connect the camcorder, the program may cause an error message similar to the following to appear: "TWAIN data source not found. Reinstall the scanner software." If this happens, select [WIA-camera model] in the application program as the TWAIN device.
- Users of Windows XP must first log in as an Administrator to install the driver.

1. Insert a memory card containing still images/movies into the camcorder.

2. Connect the Power Adapter to the camcorder.

3. Turn the POWER switch to PLAY (VCR) and move the TAPE/CARD switch to CARD.

Wait until the card access indicator stops flashing.

4. Connect the camcorder to the computer using the supplied USB cable (□ 16).

- After a few moments, a message such as "Found New Hardware" appears and the WIA driver will be installed.
- If you are prompted to restart the computer, restart the computer.
- Windows Me: When installation is complete, the Scanners and Cameras Wizard starts.

See *Downloading Still Images/Movies* (□ 18) for how to start ZoomBrowser EX and download still images/movies to the computer.

- Windows XP: When installation is complete, a window appears allowing you to select an application program to start.

See *Downloading Still Images/Movies* (□ 17) for how to start ZoomBrowser EX and download still images/movies to the computer.



Windows XP: If a window appears prompting you to select an application program to start, select ZoomBrowser EX or Scanners and Cameras Wizard to start. If neither of these is selected, operation may not work correctly. You can also set the computer to start ZoomBrowser EX or Scanners and Cameras Wizard automatically (□ 52).

Connecting the Camcorder to a Computer



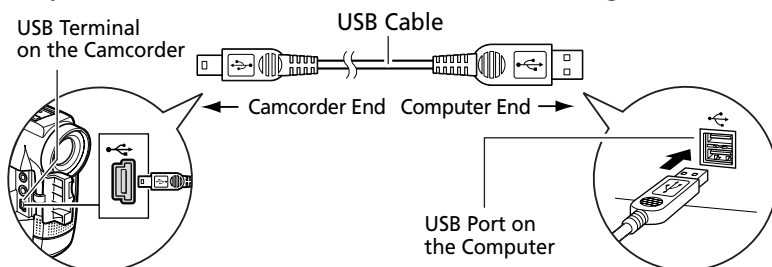
- Make sure the camcorder is being powered using the power adapter before connecting it to a computer.
- Be sure to install the DIGITAL VIDEO SOLUTION DISK before you connect the camcorder to the computer.
- Connect the USB cable directly to one of the computer's main USB ports. The interface may not function correctly if the camcorder is connected via a USB hub.
- The connection may not operate correctly if you are using other USB devices, excluding USB mice or keyboards, at the same time. If this occurs, disconnect the other devices from the computer and try reconnecting the camcorder.
- Do not connect two or more camcorders to the same computer via the USB interface. The connections may not operate correctly.
- **Never allow the computer to go into standby (sleep) mode while a camcorder is connected via the USB interface. If it does happen, never disconnect the USB cable. Try to awaken the computer with the camcorder in the connected state. Some computers will not awaken properly if you disconnect the camcorder while they are in standby mode. Please refer to your computer manual for instructions regarding its standby mode.**

- 1. Insert a memory card into the camcorder.**
- 2. Connect the power adapter to the camcorder.**
- 3. Turn the POWER switch to PLAY (VCR) and move the TAPE/ CARD switch to CARD.**

Wait until the card access indicator stops flashing.

- 4. Attach the supplied USB cable to the computer's USB port and the camcorder's USB Terminal.**

- You do not need to turn off the computer for this procedure.
- Refer to your computer manual for the location of the computer's USB ports.
- See your camcorder instruction manual for connecting instructions.



The first time you connect the camcorder to the computer via USB interface, install the TWAIN Driver or the WIA Driver (14,15).

Downloading Still Images/Movies (ZoomBrowser EX)

E

Below explains the procedure for connecting a camcorder to a computer using the USB cable. For connecting a PC card reader/writer, see *Using a PC Card Reader/Writer* (□ 21).



- Observe following precautions when the camcorder's card access indicator is flashing (the camcorder is reading or writing from or to the memory card). Failure to do so may cause memory card data to become corrupted.
 - Do not remove the memory card or detach the USB cable.
 - Do not turn off the camcorder or the computer.
 - Do not change the position of the POWER switch or the TAPE/CARD switch.
- Format the memory card with the camcorder or from the Camera Window (□ 23).
- Still images/movies recorded onto the memory card or downloaded to the hard disk are important original data files. Create a copy of the file first before working on it on your computer.
- When an enormous volume of still images/movies (such as 500 or more) is recorded onto one memory card, transferring them to a computer may take very long.
- **For Windows XP Users:**
Do not rotate the image in the [Windows Picture and Fax Viewer] or in the explorer view. The file format of the original image will be changed and the image can no longer be displayed in ZoomBrowser EX or on the camcorder.



For instructions on how to set ZoomBrowser EX to start automatically, see page 50.

Windows

Starting ZoomBrowser EX

Windows 98/Windows 2000/Windows XP

- 1. Insert a memory card containing still images/movies into the camcorder.**
- 2. Connect the Power Adapter to the camcorder.**
- 3. Turn the POWER switch to PLAY (VCR) and move the TAPE/CARD switch to CARD.**

Wait until the card access indicator stops flashing.

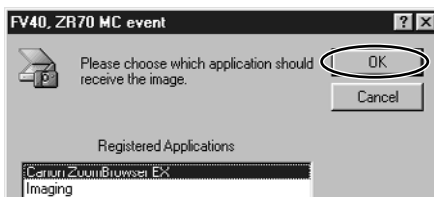
Downloading Still Images/Movies (ZoomBrowser EX)

4. Connect the camcorder to the computer using the supplied USB cable (16).

After a few moments, a window appears allowing you to select an application program to start.

5. Select [Canon ZoomBrowser EX] and click [OK].

- ZoomBrowser EX starts and opens the Camera Window, displaying the camcorder images as thumbnails (small images).
- If a camcorder and PC card reader are connected at the same time, a window appears allowing you to select the camcorder model. Confirm that your camcorder model name is displayed and click [OK].



Windows Me

1. Insert a memory card containing still images/movies into the camcorder.

2. Connect the Power Adapter to the camcorder.

3. Turn the POWER switch to PLAY (VCR) and move the TAPE/CARD switch to CARD.

Wait until the card access indicator stops flashing.

4. Connect the camcorder to the computer using the supplied USB cable (16).

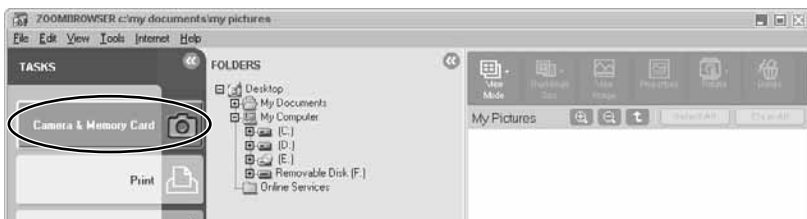
The Scanners and Cameras Wizard automatically opens. Click [Cancel] to close the Wizard.

5. Double-click the [ZoomBrowser EX] icon on the desktop.

ZoomBrowser EX starts and the Main Window appears.



6. Click [Camera & Memory Card] in the Main Window.



7. Click [Browse and Download Images].

The Camera Window opens, displaying the memory card images as thumbnails (small images).



Downloading Still Images/Movies to the Computer

1. In the Camera Window, select the still image/movie you wish to download and click [Download image].

- An orange frame appears around the selected still image/movie.
- You can select multiple images by continuously clicking on the images. Click on the image again to deselect.

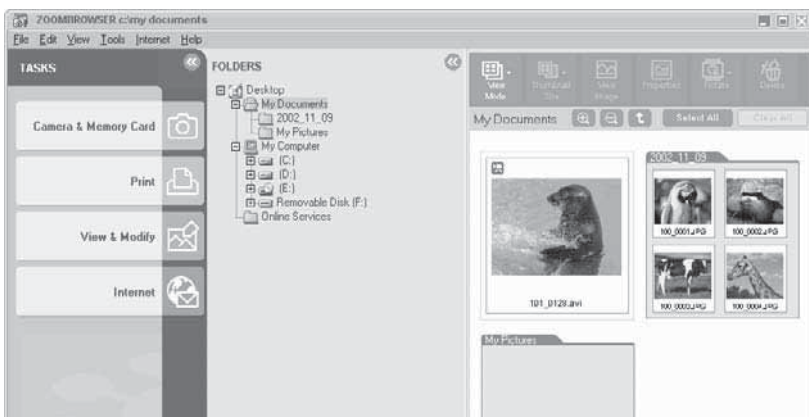


Downloading Still Images/Movies (ZoomBrowser EX)

2. In the Download Settings window, confirm the settings and click [OK] (📖 23).



The Camera Window closes and the Main Window opens. The downloaded images appear in the Main Window.

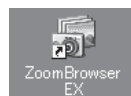


Using a PC Card Reader/Writer

This section explains only the instructions which differ when connecting a PC Card Reader/Writer instead of the camcorder.

For instruction on how to connect the PC Card Reader/Writer, please refer to its manual.

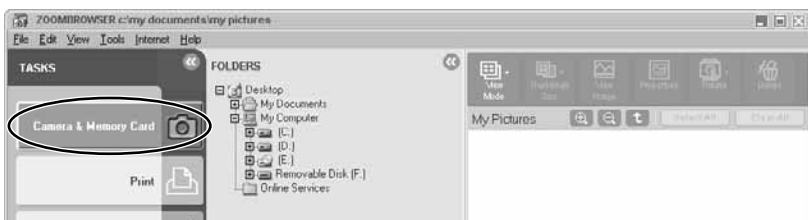
1. Insert a memory card into the reader.
2. Windows 98/Windows 2000/Windows Me: Double-click the [ZoomBrowser EX] icon on the desktop.



Windows XP: When a window appears allowing you to select an application program to start, select [ZoomBrowser EX] and click [OK].

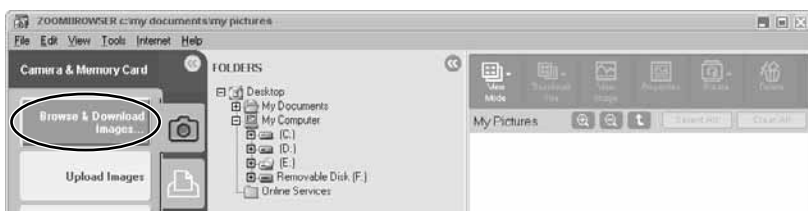
ZoomBrowser EX starts.

3. Click [Camera & Memory Card].



4. Click [Browse & Download Images].

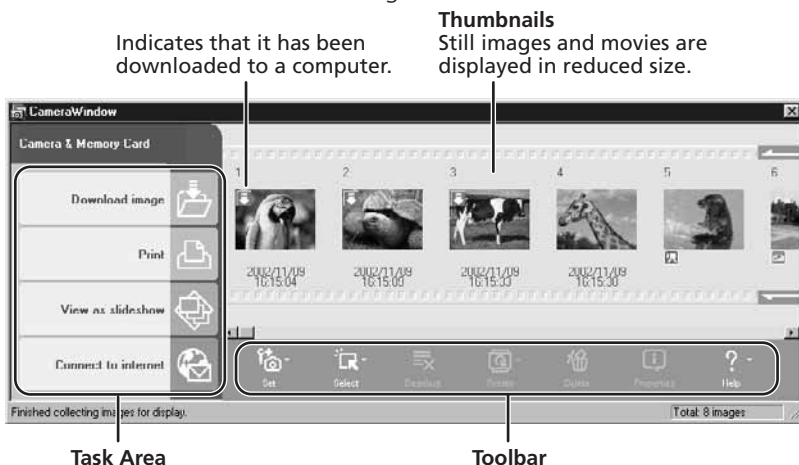
- The Camera Window opens, displaying the memory card images as thumbnails (small images).
- If multiple PC card readers loaded with memory cards are connected or if a camcorder and a PC card reader are connected, a selection dialog will appear before the Camera Window opens. Select one of the devices to proceed and click [OK].



Using Other ZoomBrowser EX Functions

Camera Window

The Camera Window opens when a connection to a camcorder is initiated. Still images/movies will be displayed as thumbnail (small) images (Movies are displayed with the first scene as a still image, indicated with a movie icon). Buttons are activated when a still image/movie is selected.



Task Area

- [Download image]:** Downloads selected still images/movies to the computer.
- [Print]:** Prints selected still images. Menu options: Layout Print and Index Print.
- [View as slideshow]:** Starts a slide show after downloading the selected still images/movies to the computer.
- [Connect to Internet]:** Attaches selected still images to an e-mail message.

Toolbar

- [Set]:** Adjusts the connection settings and camcorder settings. Menu options: Reconnect, Camera Settings, Slide*/DPOF, Add Image(s) and My Camera*. (*The SLIDE/My Camera (p. 47) function cannot be used.)
- [Select]:** Selects still images/movies. Menu options: Select All, Select New, Select Print mark, Select Send mark, Select Slide Show mark and Invert Selection.
- [Deselect]:** Deselects still images/movies.
- [Rotate]:** Rotates still images. Menu options: 90 degree left, 90 degree right and 180 degree.
- [Delete]:** Deletes selected still images/movies.
- [Properties]:** Displays image information (such as shooting date/time and image size).
- [Help]:** Displays help topics.

Download Settings Window

The following window appears when you select a task in the Task Area of the Camera Window.

Select a folder in which you wish to download and save the still image/movie.

If you wish to create a new folder, select [Create new folder] and select the item you wish to use as folder name.

If you leave the box without check mark, the folder will be named in the form of "100-0001.JPG".
If you put a check mark in the box, you can designate a file prefix. The folder will be named "file prefix + 0001.JPG".



Camera Settings Window

You can adjust the date, time and owner settings in the Camera Settings window using the computer when the camcorder is connected. You can also check the battery charge and remaining memory card capacity.

1. In the Camera Window, click the [Set] button and select [Camera Settings] from the displayed menu.
2. Check or change the settings.
Click [OK] to close the window.

Input a camcorder owner name here (up to 31 characters).

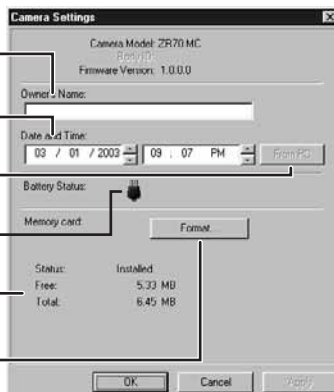
Set the date and time here.

Click this button to synchronize the camcorder to the computer's date and time settings.

Check the battery status here.

Check the remaining memory card capacity here.

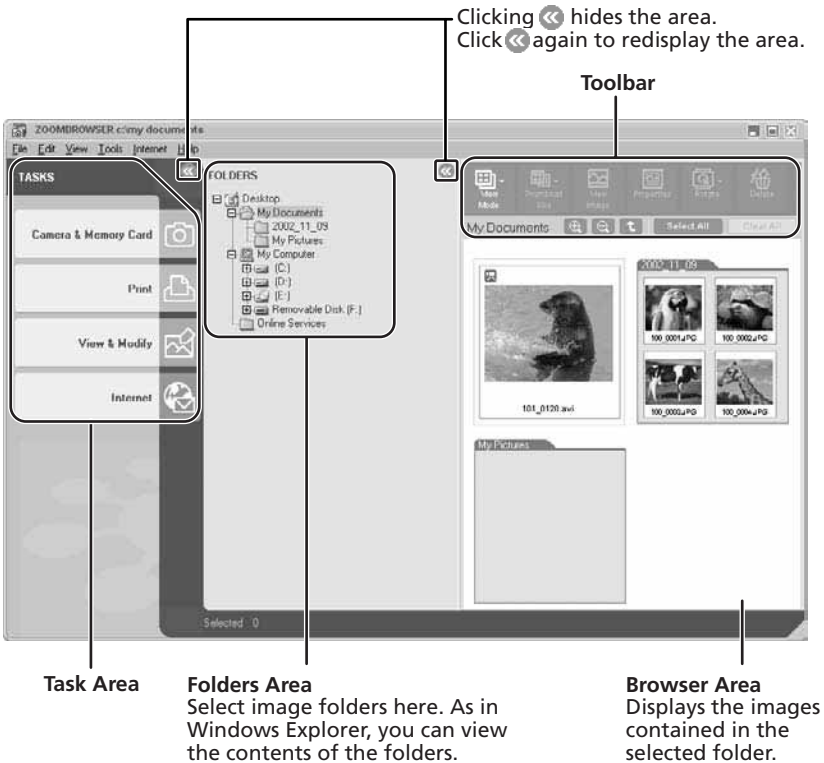
Click this to format the memory card in the camcorder.



Using Other ZoomBrowser EX Functions

Main Window

ZoomBrowser EX's Main Window features various buttons and an image display area. This section introduces the names and functions of the various window parts.



Task Area (Main Menu)

[Camera & Memory Card]: Displays the Camera Window.

[Print]: Prints selected still images. Menu options: Layout, Print and Index Print

[View & Modify]: Use this to view or edit images. Menu options: View as a Slide Show, Edit Image and Stitch Photos.

[Internet]: Attaches selected still images to an e-mail message.

Toolbar

[View Mode]:

Switches between the Zoom Mode and Scroll Mode.

Scroll Mode:

Displays the images in the selected folder at a large, easy-to-view size. When there are more images than can fit in the Browser Area, a scroll bar appears at the right of the Browser Area. When a folder has been created within the selected folder, the folder appears as an icon.

Zoom Mode:

When a folder has been created within a folder, it displays all images within the nested folder. Selecting the magnifying glass (+ or –) and clicking a folder or an image in the Browser Area changes the size at which an image is displayed or the folder level. You can also zoom up by double-clicking an empty part of the Browser Area or the tab of a folder name.

[Thumbnail Size]:

Selects the size at which images are displayed in the Browser Area. Menu options: 80 × 80, 160 × 160 and Column Number. It can only be selected in [Scroll Mode].

[View Image]:

Displays a still image in the Image Viewer window, or opens a window for playing back a movie.

[Properties]:

Displays image information (such as shooting date/time and image size).

If you select an image in the Browser Area while the Properties window is open, the information in the window switches to the contents of the selected image.

You can change the file name or enter a comment.

Switch between images with this button when more than one image is selected.



[Rotate]:

Rotates selected still images.

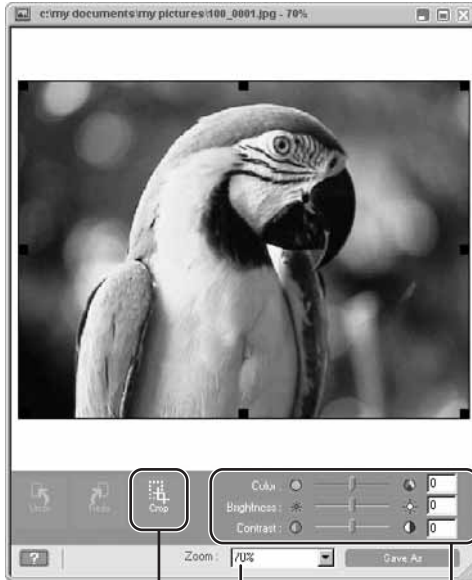
[Delete]:

Deletes selected still images/movies.

Using Other ZoomBrowser EX Functions

Image Viewer Window

The Image Viewer window appears when you double-click a still image, or when you select a still image and click [View Image].



Crop

You can extract a part of the image.

1. Click on the image and drag to form a rectangular frame.
You can move or change the size of the frame.
2. Click this button to extract the area within the frame.
The extracted part of the image appears.

Zoom


You can change the zoom ratio.

Color, Brightness and Contrast

You can adjust the color, brightness and contrast by dragging the respective slide.

Playing Back Movies From a Memory Card

E

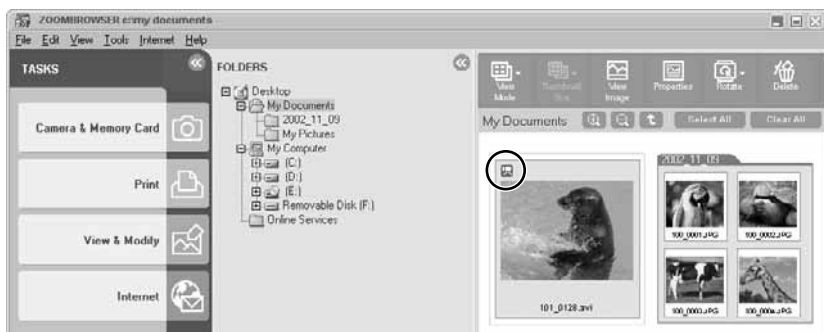
In the Camera Window and Main Window, movies are displayed with the first scene as a still image with a movie icon (). When you double-click the thumbnail in the Main Window, QuickTime Player starts and plays back the movie.



- If QuickTime 3.0 or a later version is not already installed on your computer, install the QuickTime 5.0 program from the DIGITAL VIDEO SOLUTION DISK. Place the disk in the CD-ROM drive and click [QuickTime 5.0 Installation] in the installer panel.
- Do not double-click a movie file (.AVI extension) in Windows Explorer. That will start Windows Media Player, which may not support this file type. To play back movies, double-click the thumbnail with a movie icon in the Main Window's Browser Area.

1. In the Main Window, double-click a thumbnail with a (movie) icon.

QuickTime Player starts.



Windows

2. Click the ► (play) button in QuickTime Player.

The movie will be played back.



Running a Slide Show

You can view selected still images in a slide show. Movies cannot be selected for a slide show.

1. Click [View & Modify] in the Main Window.



2. Click [View as a Slide Show].

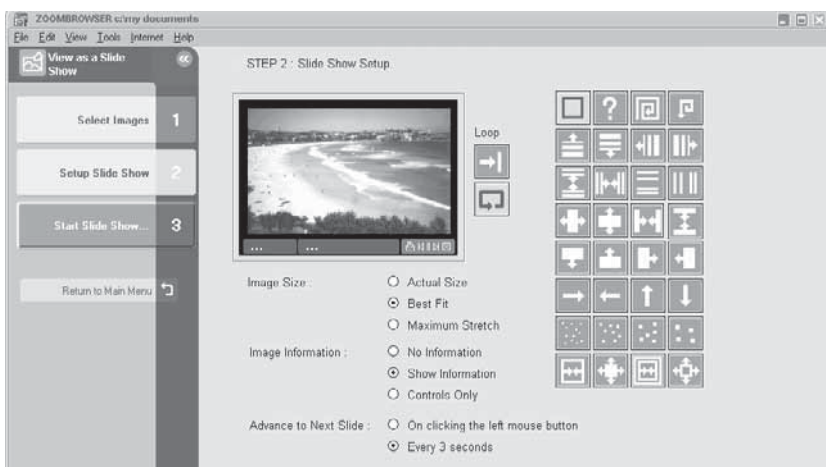


3. Select the images and select [Setup Slide Show].



4. Select the slide show settings.

- [Image Size]: Select the size of the still images.
- [Image Information]: Select to show image information such as file name or title.
- [Advance to Next Slide]: Select to advance manually or automatically. When you select "Every 3 seconds", you can select the interval in the control below (from 1 to 120 seconds).
- [Loop]: Select to stop the slide show after the last image or to continuously run it in a loop.
- [Effect]: Select the transition effect to be used when moving from one slide to another. When you click an effect, you can check the effect in the preview window.



5. Click [Start Slide Show].

Click  in the lower right corner to end the slide show.

Attaching Still Images to E-mail Messages

You can attach selected still images to an E-mail message.



To use this function, the e-mail program must be enabled as MAPI client. For details, refer to the instruction manual of the e-mail software.

1. Click [Internet] in the Main Window.



2. Click [Email Images].



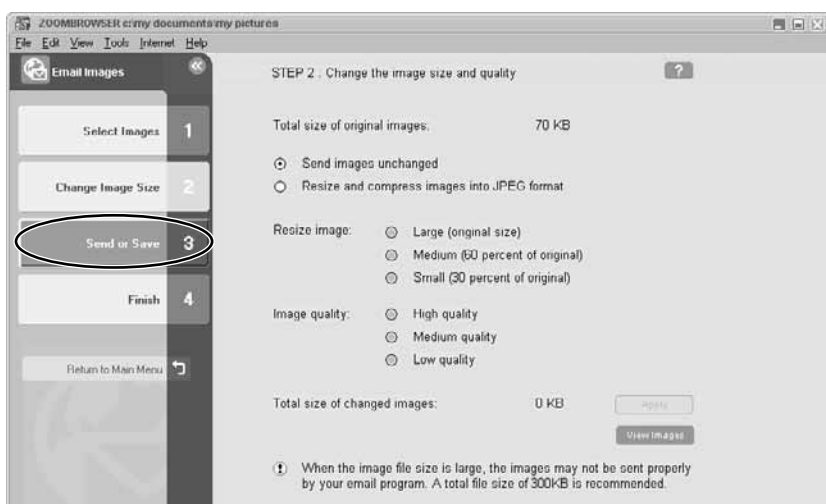
3. Select the images you wish to send in the Browser Area and click [Change Image Size].

You can select multiple images by continuously clicking on the images. Click on the image again to deselect.



4. Select image size and quality, and click [Send or Save].

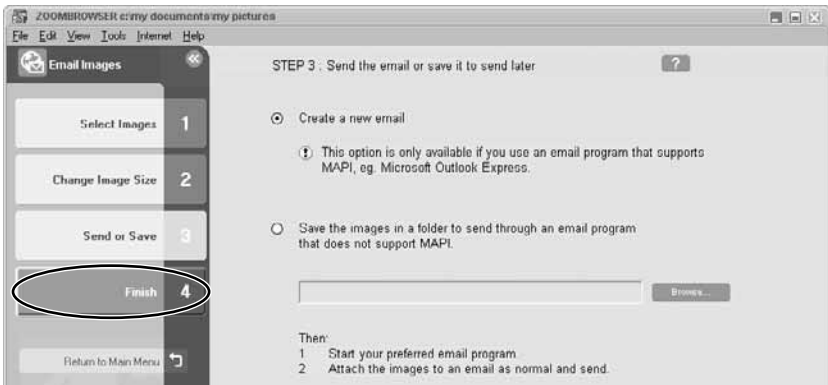
- If you wish to send the image without changes, select [Send images unchanged]. Normally select [Resize and compress images into JPEG format].
- [Resize Image]: Select the reduction ratio to the original image.
- [Image quality]: The lower the quality, the coarser becomes the image and smaller the file size.
- Pressing [Apply] displays the file size after the compression as [Total size of changed images].
- You can check the compressed image by pressing [View Images].



Attaching Still Images to E-mail Messages

5. Select to send images by e-mail or to save the images in a folder and click [Finish].

- If you selected [Create a new email], your e-mail program starts and the selected images appear as an attachment in the message window. Input address, subject and your comments and send the message. E-mail programs not supporting MAPI do not start automatically. In this case, go back to step 5 and select [Save the images in a folder...].
- If you select [Save the images in a folder...] click [Browse] and select the destination folder. Start your e-mail program and attach the saved image to a message.



Printing Still Images (PhotoRecord)

PhotoRecord is a printing program. You can use this program to lay out the still images for printing. You can also create original albums and save them to your computer.

E



- Do not remove the memory card, detach the USB cable or turn off the camcorder while data is being transferred to the printer (when the camcorder's card access indicator is flashing). Doing so may cause memory card data to become corrupted.
- If you are using a network printer and the printer name (including the network path) exceeds 31 characters, it may not be possible to print from PhotoRecord. If this happens, open [Control Panel] on the [Start] menu. Click the [Printers] icon and change the name of the your printer, limiting its length to within 31 characters.



Movies cannot be printed.

Windows

1. Click [Print] in the Main Window.



2. Click [Layout Print].

When you have selected [Index Print] and click [Open Index Print], the Index Print Settings window appears. Select paper size and other settings and click [Print] to start printing.



Printing Still Images (PhotoRecord)

3. Select the still image you wish to print and click [Captions for Printing].

You can select multiple images by continuously clicking on the images. Click on the image again to deselect.



4. Select the image information you wish to include in the print and click [Open Layout Print].

- Place a check mark beside the items you wish include in the print.
- If you wish to add a comment, right-click the mouse button on the still image, select [Properties] from the displayed menu and type in a comment.
- PhotoRecord starts and the PhotoRecord Print Modes window appears (see 36).



5. Select a print mode and click [Next].

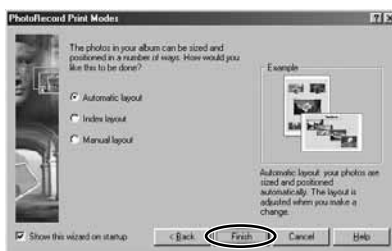


6. Select paper size and other settings and click [Next].



7. Select [Automatic Layout] and click [Finish].

The PhotoRecord window appears. If you wish to change the layout, select the layout in this window.



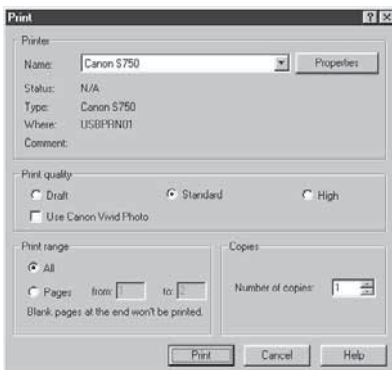
8. Click [PRINT] in the PhotoRecord window.

- The Print window appears.
- If you wish to save it as an album, select [Save As] from the [File] menu, select the destination folder and input the file name.



9. Click [Print] in the Print window.

Printing starts.



Printing Still Images (PhotoRecord)

Selecting the Print Layout and Album Design

The PhotoRecord Print Modes window appears when you perform the steps 1 to 4 above or when you click [PRINT MODES] in the PhotoRecord window. Use this window to select print layout or album design.

1. Select the print mode.

- The available print modes options depend on the printer you are using.
- When you click [Next], a window for selecting the paper size appears.

Artwork/Layout album

You can create a colorful and fun design.

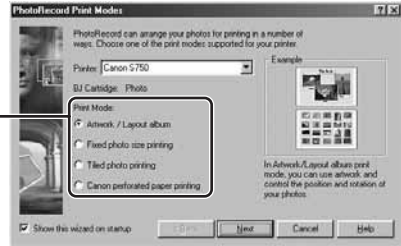
Fixed photo size printing

You can squeeze pictures into the paper size for printing.

Tiled photo printing

The program lays out and prints the specified number of images with no gaps between images on the page.

Canon perforated paper printing

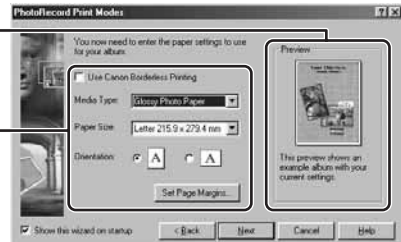


2. Select the paper size.

When you click [Next], a window for selecting the layout appears.

Use the preview to check the print layout.

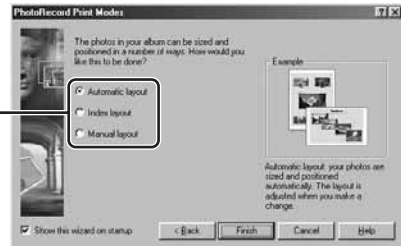
The paper type and size options correspond to the selected print mode.



3. Select the layout.

When you click [Finish], the PhotoRecord window appears.

Select the layout method.



The PhotoRecord Window

E

Windows

If you click [Save As] on the [File] menu, you can save the laid out page as an album.

Use these buttons to change how the images are aligned. Click the arrow ▼ to display a pop-up menu.



You can drag the images to move them to new positions.

Layout

Click this to switch between auto index and manual layout mode.

Print Modes

Click this to set the printing mode or paper size.

Fetch Photos

Click this to import still images.

Page Art

Click this to change the page background or borders.

Undo / Redo

Click these buttons to undo or restore the previous action.

Page title

To change the page title, click ▼ on the left side of the window and on the menu that appears, click [Title] and [Edit].

Image caption

To change the image caption, right-click the image and, on the shortcut menu, click [Caption] and [Edit]. Then, type a description about the image.

Text box

To add text to the page, click ▼ on the left side of the window and on the menu that appears, click [Add Text] and type what you want. Also, if you right-click the text box, you can click [Change Text] on the shortcut menu and change its frame or other artwork.

Image Size

Slide this tab to the left to shrink the image, right to expand it.

Stop Fetch

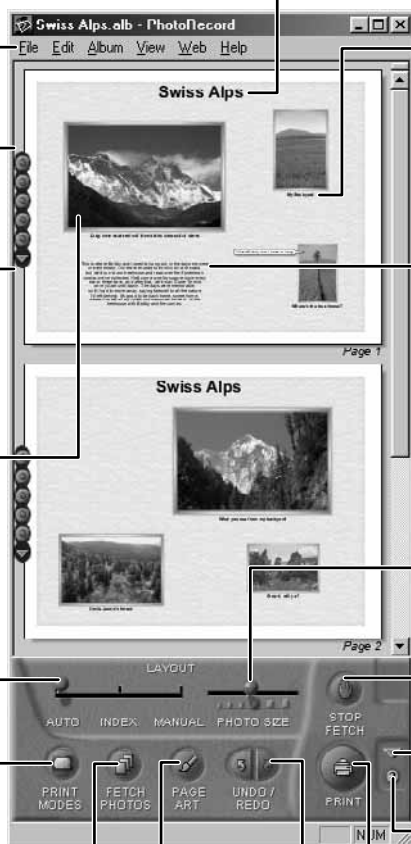
Click this to stop importing still images.

Switch between control panel sizes with this.

Click this to display Help.

Print

Click this to display the Print Dialog.



Printing Still Images (PhotoRecord)



- You can add images directly to a page. You simply need to drag the image that you want from the Browser Display Area of ZoomBrowser EX to a page in the PhotoRecord window.

- **To Change the Page Artwork**

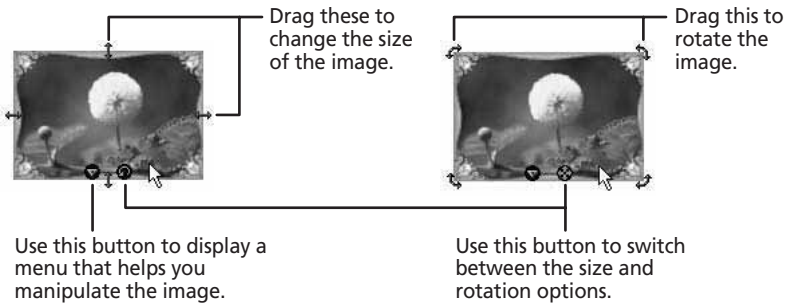
Click ▼ and select [Change Page Artwork] from the displayed menu.

- **To change the Photo Frame**

Click ▼ and select [Change Photo Frames] from the displayed menu.

- **Changing the size or rotation angle of an image**

Place your mouse pointer over the image that you want to change, then use the following operations to change its size or angle.

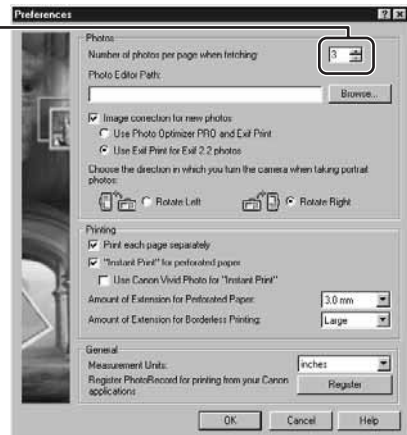


You cannot alter the size or rotation angle if you selected [Fixed photo size] or [Canon perforated paper] as the print mode.

- **Changing the number of images on a page**

You can change the number of images on one page. On the [Edit] menu, click [Preferences] and specify the number of images you want to have on one page of the album.

Set the number of images on one page here.



Adjusting Image Quality and Printing (Exif 2.2 Compliant)

The PhotoRecord utility features functions that allow you to print images with image quality adjustments and also supports the Exif 2.2 standard (or Exif Print). This function automatically selects optimal image correction settings to produce better prints.



Still images recorded with camcorders complying with the Exif 2.2 standard incorporate recording settings information, such as the recording conditions and scene mode, along with the image data. The Exif Print adjustment protocol uses this information to correct the image quality more accurately to reflect the recording settings.

1. Right-click an image you wish to print and select [Clip/Correct Photo].



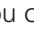
2. Place a check mark beside [Exif Print] or [Photo Optimizer Pro] and click [Close].

The selected image will be corrected.



Printing Still Images (PhotoRecord)

Selecting the Print Mode and Number of Copies (DPOF Print Settings)

You can select the image and the number of prints ( print setting) for automatic printing on a DPOF*-compliant printer. You can set the DPOF print settings also on the camcorder.

*Digital Print Order Format



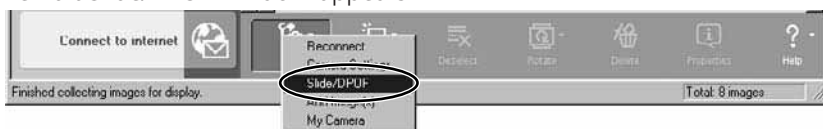
When you are using a SD memory card, make sure the protect switch is set to allow recording.



- You can include the date and file number in the print. Click [Edit] in the [Edit Slide/DPOF] window and select [Titles].
- The Edit Slide/DPOF window allows print settings on up to 998 still images. With some camcorders, DPOF print settings are limited to a maximum of 200 still images. In that case, all DPOF print settings on the 201st still image and onward will be erased.

1. Click [Set] in the Camera Window and select [Slide/DPOF] in the displayed menu.

The Edit Slide/DPOF window appears.



2. Select the still image you wish to print, the print mode and the number of copies.

- [Standard Print]: Prints selected images in the specified number of copies. Use the arrows next to the boxes below the image to select the number of copies.
- [Index Printing]: Prints selected images as thumbnails (index). Place a check mark in the box under the image to include an image to the index.
- [Both (Standard/Index)]: Performs both standard print and index printing.



3. Click [Save to Camera].

The DPOF print settings will be saved to the memory card.

Merging Panoramic Images (PhotoStitch)

E

Windows

You can merge a series of overlapping images into a single, seamless panorama. PhotoStitch automatically arranges still images recorded with the camcorder's Stitch Assist mode in their correct order and orientation, making it easy to merge them. Please refer to the Camcorder Instruction Manual to learn how to record in Stitch Assist mode.

The following instruction explains how to merge still images recorded in Stitch Assist mode with the camcorder.



Still images recorded in Stitch Assist mode with Wide-converter or Tele-converter attached cannot be merged correctly.

1. Click the arrow in the Camera Window.



2. In the confirmation window, click [OK].

PhotoStitch starts.



3. Arrange the order of the images and click [2.Merge].

Operational instructions are displayed in the upper section of the window.



Merging Panoramic Images (PhotoStitch)

4. Click [Start].



5. Select [3. Save] and then click [Save].

- Select the destination folder, input the file name and click [Save].
- In the View the Saved Image? window, click [Yes]. The Viewer window opens and displays the merged image.



- You can record the surroundings in 360 degrees, and stitch them together later to form a 360-degrees cylinder. (In [1. Selection and Arrangement], select [Arrange] and [360 degrees].) By saving this stitched image in QuickTime VR format, you can then get a virtual view of the surroundings. For this, you need to have QuickTime installed on your computer. If it is not already installed, install it from the DIGITAL VIDEO SOLUTION DISK. Place the disk in the CD-ROM drive and click [QuickTime 5.0 Installation] in the installer panel.
- Please refer to the ZoomBrowser EX and PhotoStitch Help menu for more details.

Adding Still Images from Your Computer to the Memory Card

You can add still images from the computer to a memory card. You can also add sample images for card mix and card animation from the DIGITAL VIDEO SOLUTION DISK.

E



Only still images in JPEG format can be added to the memory card.

Adding Still Images to the Memory Card

1. Click [Camera & Memory Card] in the Main Window.



Windows

2. Click [Upload Images].



Adding Still Images from Your Computer to the Memory Card

3. Select the images you wish to add and click [Open Camera Window].

You can select multiple images by continuously clicking on the images. Click on the image again to deselect.



4. In the Add Image window, select the image size and click [Add].

- The selected images will be recorded to the memory card.
- When recording is complete, the images will appear in the Camera Window.



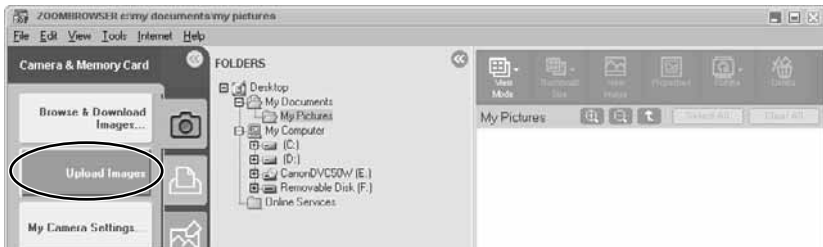
Adding Sample Images to the Memory Card

You can add sample images for card mix and card animation to the memory card. 4 images for CARD CHROMA, 2 images for CARD LUMINANCE, 2 images for CAMERA CHROMA and 4 images for CARD ANIMATION are provided on the DIGITAL VIDEO SOLUTION DISK.

1. Insert the **DIGITAL VIDEO SOLUTION DISK** to the computer's CD-ROM drive.
2. Click [Camera & Memory Card].

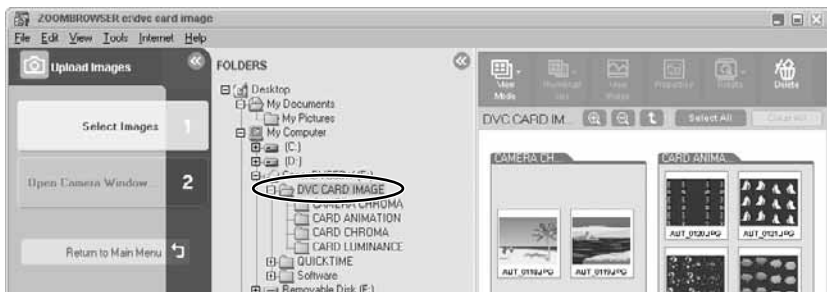


3. Click [Upload Images].



4. In the Folders Area of the Main Window, select the CD-ROM icon followed by [DVC CARD IMAGE].

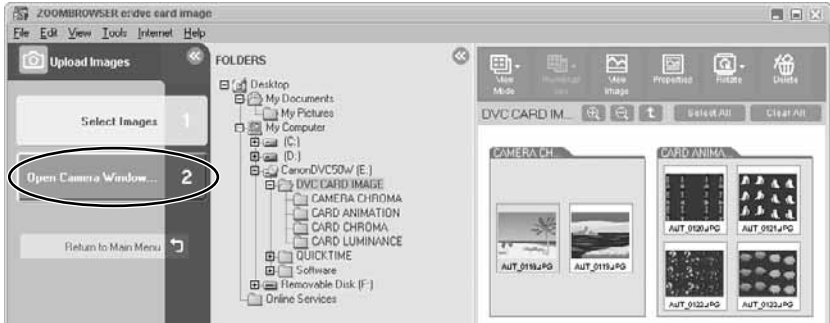
Sample images or folders for CARD CHROMA, CARD LUMINANCE, CAMERA CHROMA or CARD ANIMATION appear in the Browser Area.



Adding Still Images from Your Computer to the Memory Card

5. Select the sample images you wish to add and click [Open Camera Window].

You can select multiple images by continuously clicking on the images. Click on the image again to deselect.



6. In the Add Image window, click [Add].

- The selected images will be recorded to the memory card.
- When recording is complete, the sample images will appear in the Camera Window.



Adding a Start-up Image to the Memory Card

E

Adding a Start-up Image to the Memory Card



- Image files that do not appear in the [Computer] list of the DVC My Camera window cannot be saved to the camcorder.
- Do not detach the USB cable, turn the camcorder power off, or disconnect the camcorder from the computer while the start-up image is being saved to the memory card.

1. Click [Camera & Memory Card] in the Main Window.



Windows

2. Click [My Camera Settings].

The Select My Camera window appears.



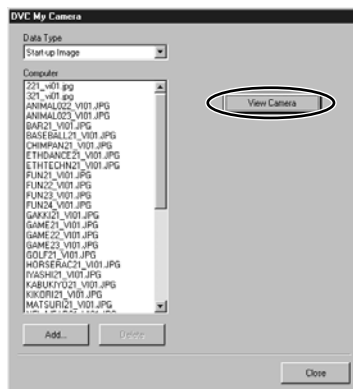
3. Select [My Camera for Digital Video Cameras] and click [OK].

The DVC My Camera window appears, displaying the start-up images saved on the computer.



Adding a Start-up Image to the Memory Card

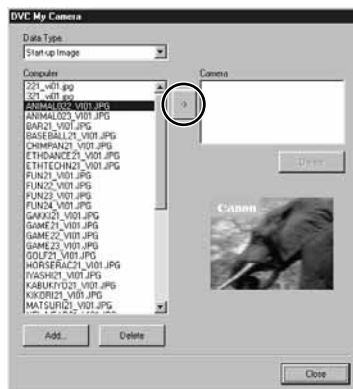
4. Click [View Camera].



5. Confirm that your camcorder model name is selected and click [OK].

6. Select the start-up image you wish to save to the memory card from the [Computer] list and click the button.

- The selected start-up image is displayed in the preview area to the right.
- The file name of the saved start-up image appears in the [Camera] list.
- Start-up images will be saved to the [Dcim] folder in the memory card.



7. Click [Close].

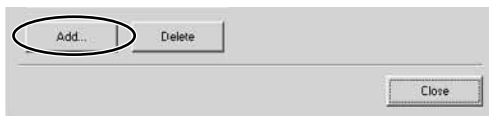
Follow the instructions in *Customizing the Camcorder* in the Camcorder Instruction Manual and change the My Camera setting.

Adding New Start-up Images to the DVC My Camera Window

Create a start-up image using an image editing application program. Create the file in the JPEG format at a size of (w) 320 x (h) 240 pixels.

Once you have created the start-up image and saved it to the computer, use the following procedures to add it to the DVC My Camera window.

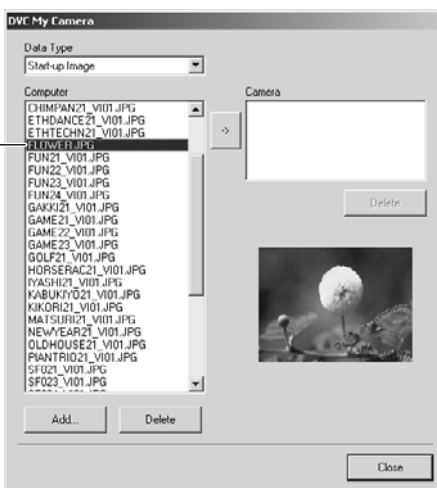
1. Open the DVC My Camera window, and click [Add].



2. Select the file you created in the [Open file] dialog and click [Open].

- The selected file appears in the [Computer] list.
- You can save the newly created file to the memory card using the procedures described in *Adding a Start-up Image to the Memory Card* (47).
- To delete a start-up image, select it and click the [Delete] button.

The newly added data will appear here



Setting ZoomBrowser EX to Start Automatically

You can set ZoomBrowser EX to start automatically when you connect the camcorder to the computer.

Windows 98/Windows 2000

- 1. Insert a memory card containing still images/movies into the camcorder.**
- 2. Connect the Power Adapter to the camcorder.**
- 3. Turn the POWER switch to PLAY (VCR) and move the TAPE/CARD switch to CARD.**

Wait until the card access indicator stops flashing.

- 4. Connect the camcorder to the computer using the supplied USB cable (16).**

When a window appears allowing you to select an application program to start, click [Cancel].

- 5. Click the Windows [Start] menu and select [Settings] and [Control Panel].**

- 6. Double click the [Scanners and Cameras] icon.**

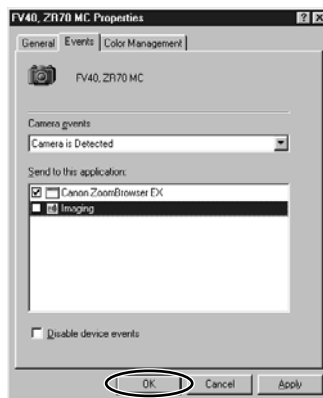
If you cannot find the [Scanners and Cameras] icon, see *Troubleshooting the TWAIN Driver/WIA Driver Uninstall* (55).

- 7. Make sure that your camcorder model is selected and click [Properties].**

- 8. Click the [Events] tab.**

- 9. Remove the check mark from all programs except ZoomBrowser EX and click [OK].**

The next time the camcorder is connected, ZoomBrowser EX starts and the Camera Window opens automatically.



1. Insert a memory card containing still images/movies into the camcorder.
2. Connect the Power Adapter to the camcorder.
3. Turn the POWER switch to PLAY (VCR) and move the TAPE/CARD switch to CARD.

Wait until the card access indicator stops flashing.

4. Connect the camcorder to the computer using the supplied USB cable (16).

When the Scanners and Cameras Wizard opens, click [Cancel].

5. Click the Windows [Start] menu and select [Settings] and [Control Panel].

6. Double click the [Scanners and Cameras] icon.

If you cannot find the [Scanners and Cameras] icon, see *Troubleshooting the TWAIN Driver/WIA Driver Uninstall* (55).

7. Double-click the icon of your camcorder model.

8. Click the [Events] tab.

9. In the [Actions] section, select [Start this program], set it to [Canon ZoomBrowser EX] and click [OK].

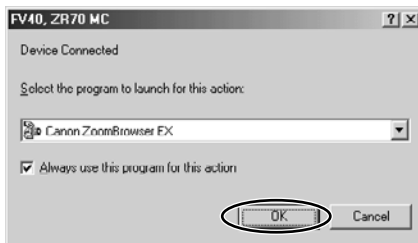
The next time the camcorder is connected, a window appears allowing you to select an application program to start.



Setting ZoomBrowser EX to Start Automatically

10. Select [Canon ZoomBrowser EX], place a checkmark beside “Always use this program for this action” and click [OK].

- ZoomBrowser EX starts and the Camera Window opens automatically.
- The next time the camcorder is connected, ZoomBrowser EX starts and the Camera Window opens automatically.



Windows XP

1. Insert a memory card containing still images/movies into the camcorder.

2. Connect the Power Adapter to the camcorder.

3. Turn the POWER switch to PLAY (VCR) and move the TAPE/CARD switch to CARD.

Wait until the card access indicator stops flashing.

4. Connect the camcorder to the computer using the supplied USB cable (16).

A window appears allowing you to select an application program to start.

5. Select [Canon ZoomBrowser EX], place a check mark next to “Always use this program for this action” and click [OK].

The next time the camcorder is connected, ZoomBrowser EX starts and the Camera Window opens automatically.



Uninstalling the Software

Uninstall the software when you wish to delete it from your computer or when reinstallation is required to fix corrupted files.

E

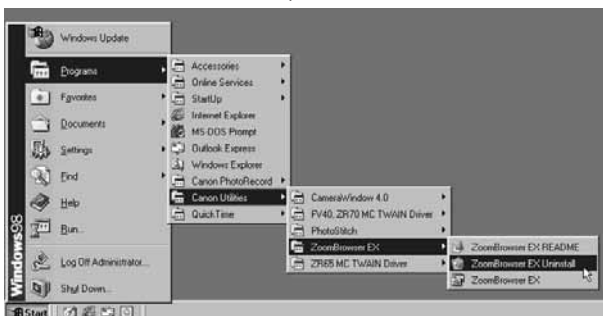


Users of Windows 2000 and Windows XP must first log in as an Administrator to uninstall the driver and other programs.

Uninstalling ZoomBrowser EX

1. Click the Windows [Start] menu and select [Programs], [Canon Utilities], [ZoomBrowser EX] and [ZoomBrowser EX Uninstall].

The uninstall utility starts and removes ZoomBrowser EX.
Uninstall the Camera Window with the same procedure.



Windows



- If you have uninstalled ZoomBrowser EX because of a corrupt database file or other problem, please also delete the Database folder, which can be found within the [C:\Program Files\Canon\ZoomBrowser EX] folder.
- PhotoRecord and PhotoStitch can be removed with the same procedure.

Uninstalling the TWAIN Driver/WIA Driver

1. Insert a memory card containing still images/movies into the camcorder.
2. Connect the Power Adapter to the camcorder.
3. Turn the POWER switch to PLAY (VCR) and move the TAPE/CARD switch to CARD.

Wait until the card access indicator stops flashing.

Uninstalling the Software

4. Connect the camcorder to the computer using the supplied USB cable (16).

A window for selecting an application program or the Scanners and Cameras Wizard appears, or ZoomBrowser EX starts.

5. If the window for selecting an application program or the Scanners and Cameras Wizard appeared, click [Cancel]. If ZoomBrowser EX started, close it.

6. Click the Windows [Start] menu and select [Settings] and [Control Panel].

Windows XP : Click the Windows [Start] menu and select [Control Panel] and [Printers and Other Hardware].

7. Double-click the [Scanners and Cameras] icon.

If you cannot find the [Scanners and Cameras] icon, see *Troubleshooting the TWAIN Driver/WIA Driver Uninstall* (55).

8. Windows 98/Windows 2000:

1. Delete the camcorder model name from the [Scanners and Cameras Properties] list.
2. Click [OK] to close the window.
3. Click the Windows [Start] menu and select [Programs], [Canon Utilities], [*** TWAIN Driver] and [TWAIN Driver Uninstall].
The model name of your camcorder appears in place of the asterisks (***).

Windows Me/Windows XP:

1. Delete the camcorder icon from the [Scanners and Cameras] folder.
2. Click [OK] to close the window.
3. Click the Windows [Start] menu and select [Programs], [Canon Utilities], [*** WIA Driver] and [WIA Driver Uninstall].
The model name of your camcorder appears in place of the asterisks (***).

9. When the Confirm Uninstall window appears, click [OK].

The uninstall process starts.

10. When the Maintenance Complete window appears, click [Finish].

Troubleshooting the TWAIN Driver/WIA Driver Uninstall

If you had problems uninstalling the driver, use the following procedures to remove it.



Use the procedures below for the following circumstances too.

- If you do not find [Scanners and Cameras] in the [Control Panel] or [Printers and Other Hardware].
- If your camcorder model name does not appear in the [Scanners and Cameras Properties] or [Scanners and Cameras].
- If you connected the camcorder to the computer via the USB cable before installing the software/driver on the DIGITAL VIDEO SOLUTION DISK.

Windows 98/Windows Me

Leave the camcorder connected to the computer.

1. Click the Windows [Start] menu and select [Settings] and [Control Panel].

2. Double-click the [System] icon.

The [System Properties] dialog appears.

3. Click the [Device Manager] tab.

4. If your camcorder model name appears under the [Other Devices] and/or [Imaging Devices] categories, use the following procedures to delete it.

1. Select the name of the camcorder model and click [Remove].
2. In the confirmation dialog, click [OK].
3. Click [OK] to close the [System Properties] dialog.

5. Double-click the [My Computer] icon on the desktop followed by the [C:] drive and the [Windows] and [Inf] folders.

If the [Inf] Folder Is Not Visible in the [Windows] Folder

1. Windows 98: Click the [View] menu and select [Folder Options].
Windows Me: Click the [Tools] menu and select [Folder Options].
2. Click the [View] tab.
3. Windows 98: Set the [Hidden files] section to [Show all files].
Windows Me: Set the [Hidden files and folders] section to [Show hidden files and folders].
4. Click [OK].
This makes the [Inf] folder and files in the [Inf] folder visible.

Uninstalling the Software

6. Find and delete the [Drvdata.bin] and [Drvidx.bin] files.

7. In the [Inf] folder, double-click [Other] folder to open it.

8. Find and delete the [Canon.IncCAP_*] folder.**

- The model name of your camcorder appears in place of the asterisks (***).
- A window for selecting an application program or the Scanners and Cameras Wizard appears, or ZoomBrowser EX starts.
- If the above file is not contained in the [Other] folder, you do not need to delete anything.



The [Inf] folder contains numerous files that are critical to the computer's operation. Be extremely careful not to delete the wrong files. If you delete the wrong file, you may be unable to restart Windows.

Windows 2000/Windows XP

Leave the camcorder connected to the computer.

1. Windows 2000: Click the Windows [Start] menu and select [Settings] and [Control Panel].

Windows XP: Click the Windows [Start] menu and select [Control Panel] and [Performance and Maintenance].

2. Double-click the [System] icon.

3. Click the [Hardware] tab.

4. Click the [Device Manager] button.

5. If your camcorder model name appears under the [Other Devices] and/or [Imaging Devices] categories, use the following procedures to delete it.

1. Select the name of the camcorder model, right-click the mouse button and select [Delete].
2. In the confirmation dialog, click [OK].
3. Click [OK] to close the [System Properties] dialog.
Remove all copies of your camcorder model name that appear in the [Other Devices] or [Imaging Devices] categories, or that appear more than once in one category.

6. Windows 2000 : Double-click the [My Computer] icon on the desktop, followed by the [C:] drive, and the [Winnt] and [Inf] folders.

Windows XP : From the [Start] menu, click [My Computer], [C:], [Windows] and [Inf] folders in succession.

If the [Inf] Folder Is Not Visible in the [Winnt] Folder

Use the following procedures to show all files and folders.

1. Click the [Tools] menu and select [Folder Options].
2. Click the [View] tab.
3. In the [Advanced setting] section, set the [Hidden files and folders] category to the [Show hidden files and folders] option.
If [Hide extensions for known file types] is selected, remove its check mark.
4. Click [OK] to close the dialog.
This makes the [Inf] folder and the files in the [Inf] folders visible.

7. Look for the file starting with [OEM*].

- A number such as "0" or "1" will appear in place of the asterisk (*) above. You will also find another file called [Oem*.pnf], which will have the same number as the [Oem*] file. The two constitute one set.
- There may be many file sets starting with "Oem".
- If you double-click the [Oem*] file, the Windows Notepad program will start and show the file contents. Click each [Oem*] file until you find one that contains "**** Canon Camera Driver Setup File****" in its first line. When you find the correct file, note down its name and close the Notepad window.

8. Delete the [Oem*] file set.

Delete all [Oem*] and [Oem*.pnf] files, taking great care to delete the correct files.



The [Inf] folder contains numerous files that are critical to the computer's operation. Be extremely careful not to delete the wrong files. If you delete the wrong file, you may be unable to restart Windows.

Troubleshooting

❓ Cannot download images, camcorder is not recognized when the camcorder is connected via the USB interface.

→ Computer does not support the USB interface.

The USB interface is not supported for computers not in compliance with the following requirements. Acquire the necessary system to use the USB interface.

Requirements: Built-in USB interface on a system preinstalled with one of Windows 98/Windows Me/Windows 2000/Windows XP.

→ There is no memory card in the camcorder.

Insert a memory card into the camcorder.

→ The camcorder is not set to the correct mode.

Slide the POWER switch to PLAY (VCR) and the TAPE/CARD switch to CARD.

→ Camcorder is not correctly connected to the computer.

Read *Connecting the Camcorder to a Computer* (□ 16) and check the connection.

Ensure that you are using the correct cable and that its connectors are in good shape.

→ If you are experiencing operational problems, detach the USB cable from the camcorder and computer and terminate the connection. Restart the computer and then reconnect the camcorder.

→ TWAIN Driver or WIA Driver is not installed properly.

First uninstall the TWAIN Driver/WIA Driver, then reinstall the driver from the DIGITAL VIDEO SOLUTION DISK (remove the check marks from the other programs when prompted to select the programs to be installed). For uninstalling refer to *Installing the TWAIN Driver/WIA Driver* (□ 14). For installing refer to *Uninstalling the TWAIN Driver/WIA Driver* (□ 53).

❓ Cannot install the TWAIN Driver, WIA Driver correctly.

→ Does the system have a built-in USB port and did it come with Windows 98 (First or Second Edition), Windows Me, Windows 2000, or Windows XP preinstalled?

→ Is the camcorder correctly connected to the computer?

→ Are you using the AC power adapter to power the camcorder?

If the Problem Is Not Mentioned Above

If the USB TWAIN Driver/USB WIA Driver has not correctly installed, Windows may not recognize the driver. Uninstall the driver according to the instructions (□ 53) and reinstall the driver.

❓ Image files or folders do not appear in ZoomBrowser EX.

→ Images or folders shown in ZoomBrowser EX and the actual file contents may be different when an image file has been moved or copied using Windows functions or edited with a separate program. In such case, click the [View] menu and select [Refresh Current Folder].

❓ Titles and comments added using a prior version of ZoomBrowser EX do not appear in ZoomBrowser EX 4.0.

→ Titles or comments added using a prior version of ZoomBrowser EX will not be displayed. Use the following procedure to display them.

1. In Windows Explorer, open the [Program] folder under the folder in which you installed ZoomBrowser EX 4.0 (C:\Program Files\Canon\ZoomBrowser EX\Program).
2. Double-click [dbconverter.exe].
3. Select the database you were using until now (C:\Program Files\Canon\ZoomBrowser EX\Program) and click the [Start] button. Please note that with ZoomBrowser EX 4.0, both titles and comments appear in the comment list.

❓ Cannot find the image folders saved on the prior version of ZoomBrowser EX 4.0.

→ Image folders saved under the [Program Files] folder (such as [Image Library One]) cannot be displayed in the Main Window's Folder Area of ZoomBrowser EX version 4.0. Use the following procedure to display them.

1. In Windows Explorer, open the [Program] folder under the folder in which you installed ZoomBrowser EX 4.0 (C:\Program Files\Canon\ZoomBrowser EX\Program\Image Library One).
2. Select the image folder you wish to display and copy the folder to a different destination.
The images in the folder will be displayed.

Macintosh System Requirements

OS:	Mac OS 9.0-9.2, Mac OS X (10.1/10.2)
Computer Model:	Computers that come with above OS preinstalled and have built-in USB ports.
CPU:	PowerPC
RAM:	Mac OS 9.0-9.2: 20 MB or more of application memory Mac OS X (Version 10.1/10.2): 128 MB or more
Interface:	USB
Free Hard Disk Space:	Canon Utilities – ImageBrowser 50 MB or more – PhotoStitch 30 MB or more
Display:	800 × 600 pixels/32,000 colors or better, 1,024 × 768 pixels/32,000 colors or better is recommended



- Proper operation is not guaranteed on a user-built PC.
- Proper operation is not guaranteed on any particular system, even if it meets the requirements outlined above.
- A CD-ROM drive is required to install the software.
- Connect the USB cable directly to one of the computer's main USB ports. The interface may not function correctly if the camcorder is connected via a USB hub.
- The connection may not operate correctly if you are using other USB devices, excluding USB mice or keyboards, at the same time. If this occurs, disconnect the other devices from the computer and try reconnecting the camcorder.
- Do not connect two or more camcorders to the same computer via the USB interface. The connections may not operate correctly.
- Not all operations performed with a connection to a USB 2.0 compatible board can be guaranteed.

What Can Be Accomplished with the Software

This topic introduces the main features of the software programs contained on the DIGITAL VIDEO SOLUTION DISK.

E

■ ImageBrowser (65)

- Downloading still images/movies recorded onto a memory card to your computer.
- Categorizing and organizing large volumes of still images/movies.
- Searching and organizing images chronologically.
- Creating mail attachments from still images.
- Laying out and printing still images.
- Printing indexes.

■ PhotoStitch (89)

Merging panoramic images.

Installing the Software



Before you attach the camcorder to the computer with the USB cable for the first time, you must install the driver from the DIGITAL VIDEO SOLUTION DISK.

1. Close any programs that are running.
2. Set the DIGITAL VIDEO SOLUTION DISK in the computer's CD-ROM drive.
3. Mac OS 9.0-9.2: Double click the CD-ROM icon, followed by the [Mac OS 9] and [Canon Digital Video Installer] icons.
Mac OS X (10.1/10.2): Double click the CD-ROM icon, followed by the [Mac OS X] and [Canon Digital Video Installer] icons.

The installer panel appears.

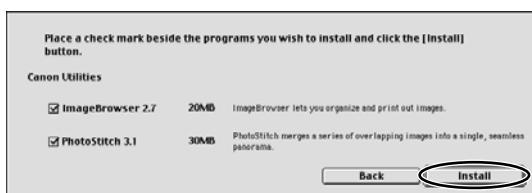
4. Select your language.
5. Click [Digital Video Software Installation].

Installer Panel



6. Select the programs you wish to install and click [Install].

Confirm that there is a check mark beside the name of the program you wish to install.



7. Read the license agreement and click [Agree].

8. Select the installation destination and click [Choose].

Installation starts.



9. When the message "Installation has finished." appears, click [OK].



10. After the installation is complete, restart the computer as prompted.

Connecting the Camcorder to a Computer



- Make sure the camcorder is being powered using the power adapter before connecting it to a computer.
- Be sure to install the DIGITAL VIDEO SOLUTION DISK before you connect the camcorder to the computer.
- Connect the USB cable directly to one of the computer's main USB ports. The interface may not function correctly if the camcorder is connected via a USB hub.
- The connection may not operate correctly if you are using other USB devices, excluding USB mice or keyboards, at the same time. If this occurs, disconnect the other devices from the computer and try reconnecting the camcorder.
- Do not connect two or more camcorders to the same computer via the USB interface. The connections may not operate correctly.
- **Never allow the computer to go into standby (sleep) mode while a camcorder is connected via the USB interface. If it does happen, never disconnect the USB cable. Try to awaken the computer with the camcorder in the connected state. Some computers will not awaken properly if you disconnect the camcorder while they are in standby mode. Please refer to your computer manual for instructions regarding its standby mode.**

1. Insert a memory card containing still images/movies into the camcorder.

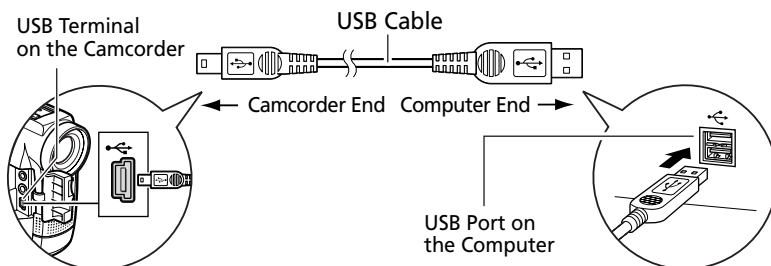
2. Connect the power adapter to the camcorder.

3. Turn the POWER switch to PLAY (VCR) and move the TAPE/ CARD switch to CARD.

Wait until the card access indicator stops flashing.

4. Attach the supplied USB cable to the computer's USB port and the camcorder's USB Terminal.

- You do not need to turn off the computer for this procedure.
- Refer to your computer manual for the location of the computer's USB ports.
- See your camcorder instruction manual for connecting instructions.



Downloading Still Images/Movies (ImageBrowser)

E

Below explains the procedure for connecting a camcorder to a computer using the USB cable.

For connecting a PC card reader/writer, see *Using a PC Card Reader/Writer* (□ 71).



- Observe following precautions when the camcorder's card access indicator is flashing (the camcorder is reading or writing from or to the memory card). Failure to do so may cause memory card data to become corrupted.
 - Do not remove the memory card or detach the USB cable.
 - Do not turn off the camcorder or the computer.
 - Do not change the position of the POWER switch or the TAPE/CARD switch.
- Format the memory card with the camcorder or from the Camera Window (□ 73).
- Still images/movies recorded onto the memory card or downloaded to the hard disk are important original data files. Create a copy of the file first before working on it on your computer.

Starting ImageBrowser

Mac OS 9.0-9.2

- 1. Insert a memory card containing still images/movies into the camcorder.**
- 2. Connect the Power Adapter to the camcorder.**
- 3. Turn the POWER switch to PLAY (VCR) and move the TAPE/CARD switch to CARD.**

Wait until the card access indicator stops flashing.

Downloading Still Images/Movies (ImageBrowser)

4. Connect the camcorder to the computer using the supplied USB cable (📖 64).

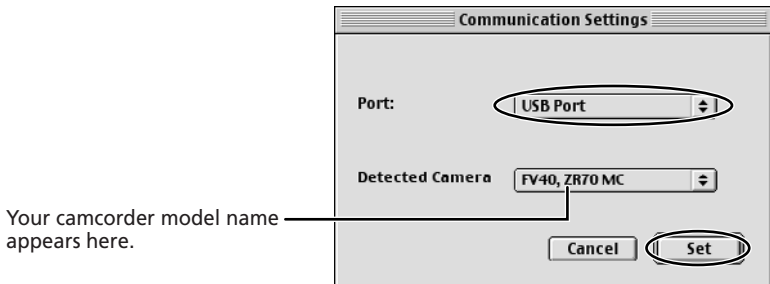
- ImageBrowser starts and the ImageBrowser Automation Wizard dialog appears. In the ImageBrowser Automation Wizard dialog, you can select the action that is carried out after ImageBrowser starts.
- A dialog with the previously selected automated settings will appear the next time you start ImageBrowser.
 1. To use these settings unchanged, click the [Start] button.
 2. To do nothing, click [Cancel].
 3. To change the settings, click [Settings Change], select the action and click [OK].

5. Select [Display Images] and click [OK].



The Communications Settings window appears. This window only appears the first time the camcorder is connected.

6. Confirm that [USB port] and your camcorder model name are selected and click [Set].

The Camera Window opens, displaying the camcorder images as thumbnails (small images).



How to Set ImageBrowser to Not Start Automatically

1. Click the Apple menu  and select [Control Panels] and [Canon ImageBrowser Auto Launch].
The Settings for USB Connection dialog will display.
2. Click [The application program below will start] to clear the check mark.
3. Click the close box  at the upper left to close the dialog.
ImageBrowser will cease to start automatically thereafter.

Click here to close the dialog.



Mac OS X (10.1/10.2)



Do not connect the camcorder while the Classic environment is started. Likewise, do not start the Classic environment while the camcorder is connected.

1. Insert a memory card containing still images/movies into the camcorder.
2. Connect the Power Adapter to the camcorder.
3. Turn the POWER switch to PLAY (VCR) and move the TAPE/CARD switch to CARD.
Wait until the card access indicator stops flashing.
4. Connect the camcorder to the computer using the supplied USB cable (see page 64).

Downloading Still Images/Movies (ImageBrowser)

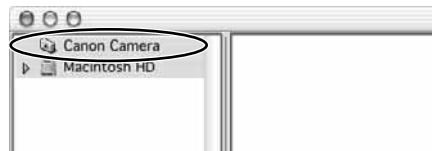
5. Double-click the [Canon ImageBrowser] icon on the desktop.

If the Canon ImageBrowser icon does not appear on the desktop, double-click the [Canon Utilities] folder on the drive on which the program was installed, followed by the [ImageBrowser] folder and [ImageBrowser] icon.



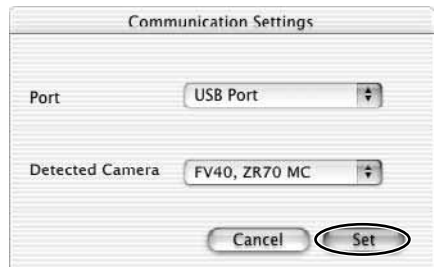
6. Click [Canon Camera] in the Explorer View section.

The Communications Settings window appears. This window only appears the first time the camcorder is connected.



7. Confirm that [USB port] and your camcorder model name are selected and click [Set].

The Camera Window opens, displaying the camcorder images as thumbnails (small images).



Downloading Still Images/Movies to the Computer



When using the ImageBrowser's Camera Window to download images from the camcorder's memory card, make sure to select [Macintosh HD]. The image will not be saved to the computer when [DCIM] is selected. Follow the instructions below.

1. Mac OS 9.0-9.2: Select [Macintosh HD] in the explorer view section.

Mac OS X (10.1/10.2): Select the [(user name)] subfolder of the [Users] folder in [Macintosh HD].



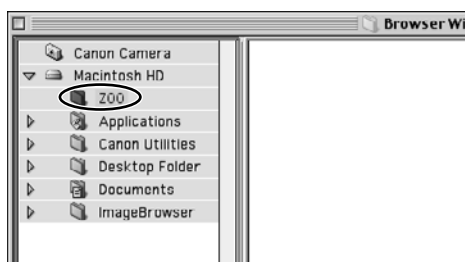
Explorer View Section

2. Create a new folder for saving images from the memory card in the camcorder.

Click the [File] menu and select [New Folder]. A folder with the name "Untitled" will be created. Click it to change the folder name as you wish. In this example, we will input "ZOO."



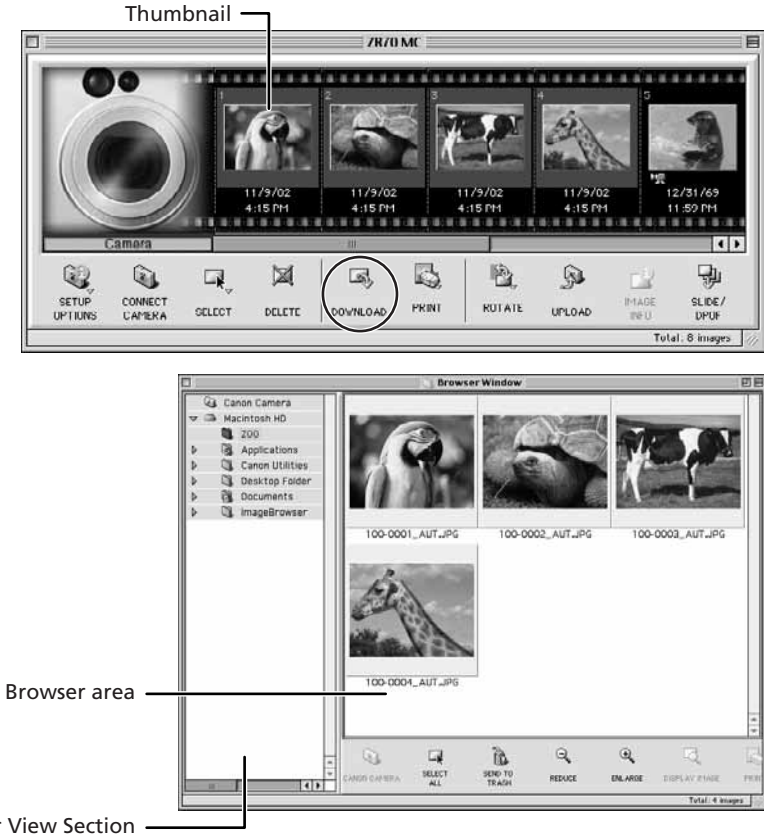
3. In the Explorer View Section, click the newly created folder.



Downloading Still Images/Movies (ImageBrowser)

4. Select still images/movies in the Camera window and click [DOWNLOAD].

- A blue frame appears around the selected still image/movie.
- Downloaded still images/movies are saved to the computer and appear in the Browser area.



To disconnect the camcorder, click the close box (Mac OS 9.0-9.2) or the red close box (Mac OS X (10.1/10.2)) at the upper left of the Camera Window. The Camera Window will close.



- Double-clicking a still image/movie on the camera window imports it to the computer.
- You can also download still images/movies to the computer by dragging them from the Camera window and dropping them on the Browser area or the Explorer View Section.
- You can select multiple still images/movies by holding down [Shift] or [Option] + [Shift] while clicking.

Using a PC Card Reader/Writer

This section explains only the instructions which differ when connecting a PC Card Reader/Writer instead of the camcorder.

For instruction on how to connect the PC Card Reader/Writer, please refer to the PC Card Reader Manual.

1. Insert a memory card into the reader.

Mac OS X (10.1/10.2): If a dialog appears, click the red close box.

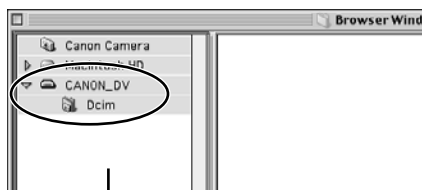
2. Double-click the [Canon ImageBrowser] icon on the desktop.

- ImageBrowser starts.
- If the icon does not appear on the desktop, double-click the folder in which you installed the program, followed by the [Canon Utilities] and [ImageBrowser] folders and the [ImageBrowser] file.



3. Double-click the [CANON_DV] and [DCIM] folders in the Explorer View Section.

The Camera Window opens, displaying the memory card images as thumbnails (small images).

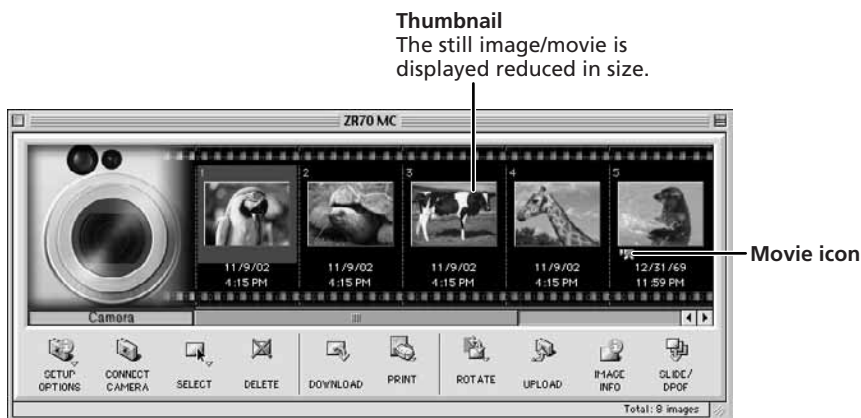


Explorer View Section

Using Other ImageBrowser Functions

Camera Window

The Camera Window opens when a connection to a camcorder is initiated. Still images/movies will be displayed as thumbnail (small) images (Movies are displayed with the first scene as a still image, indicated with a movie icon). Buttons are activated when a still image/movie is selected.



- [SETUP OPTIONS]:** Adjusts the connection settings and camcorder settings. Menu options: Camera Settings and Communications Settings.
- [CONNECT CAMERA]:** Reconnects the camcorder to the computer.
- [SELECT]:** Selects still images/movies. Menu options: Select All and Deselect All.
- [DELETE]:** Deletes selected still images/movies.
- [DOWNLOAD]:** Downloads selected image to the computer.
- [PRINT]:** Prints selected still images. Menu options: Layout printing and Index printing.
- [ROTATE]:** Rotates still images. Menu options: 90 degrees right, 90 degrees left and 180 degrees.
- [UPLOAD]:** Adds selected still images to the memory card.
- [IMAGE INFO]:** Displays image information (such as shooting date/time and image size).
- [SLIDE/DPOF]:** The [SLIDE] function cannot be used. [DPOF] allows you to select the print order settings.



Mac OS X (10.1/10.2): Be careful when erasing images in the ImageBrowser Camera Window. Even images you protected with the camcorder will be erased permanently.

Camera Setting Window

You can adjust the date, time and owner settings in the Camera Settings window using the computer when the camcorder is connected. You can also check the remaining memory card capacity.

1. In the Camera Window, click the [Setup Options] button and select [Camera Settings] from the displayed menu.
2. Check or change the settings.
Click [OK] to close the window.

Input a camcorder owner name here
(up to 31 characters).

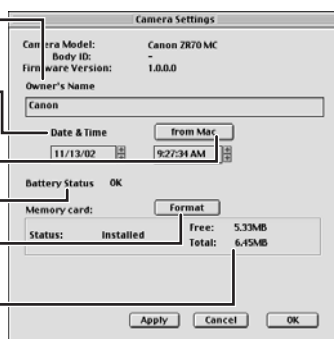
Set the date and time here.

Click this button to synchronize the camcorder
to the computer's date and time settings.

Check the battery status here.

Click this to format the memory card
in the camcorder.

Check the remaining memory card
capacity here.



Using Other ImageBrowser Functions

Browser Window

This section describes the various parts of the Browser Window display.

Explorer View Section

Displays the disks and folders that you can use on your computer.

If you click the disclosure triangle on the left edge of the display, you can switch between collapsing and expanding the contents of that folder.

Browser Area

This is the area where thumbnails of still images/movies in the selected folder are displayed.

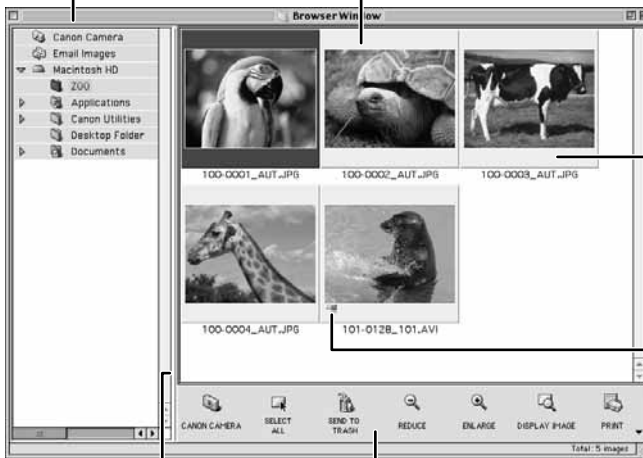


Image Name

This is where the file name of each individual still image/movie is displayed. Movies are displayed with an movie icon.

You can drag this line to change the position of the boundary between the Explorer View Section and the Browser Area.

Control Panel

This area contains buttons that allow you to perform a variety of functions.

You can drag this part of the frame to change the size of the Browser Window.

[CANON CAMERA]: Displays the Camera Window.

[SELECT ALL]: Selects all still images/movies in a folder.

[SEND TO TRASH]: Deletes selected still images/movies.

[REDUCE]: Reduces the size of the thumbnails in the Browser Area.

[ENLARGE]: Enlarges the size of the thumbnails in the Browser Area.

[DISPLAY IMAGE]: Displays a still image in the Image Viewer window, or opens a window for playing back a movie.

[PRINT]: Prints selected still images. Menu options: Layout printing and Index printing.

Image Viewer Window

The Image Viewer window appears when you double-click a still image, or when you select a still image and click [DISPLAY IMAGE].



Enlarge or reduce the image

Current zoom ratio

CROP

You can extract a part of the image.

1. Click on the image and drag to form a rectangular frame.
You can move or change the size of the frame.
2. Click this button to extract the area within the frame.
The extracted part of the image appears.

ADJUST COLOR

Click here to display the Adjust Color window to adjust hue, saturation and lightness of the image by dragging the respective slide.

Using Other ImageBrowser Functions

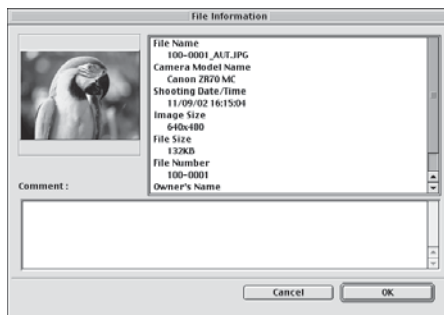
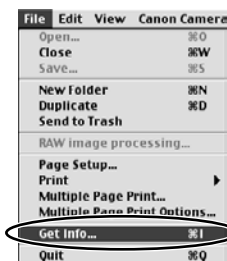
Displaying the Image Information

You can check the image information such as shooting date/time or file size.

1. Select the image of which you wish to display the information.

2. From the [File] menu, select [Get Info].

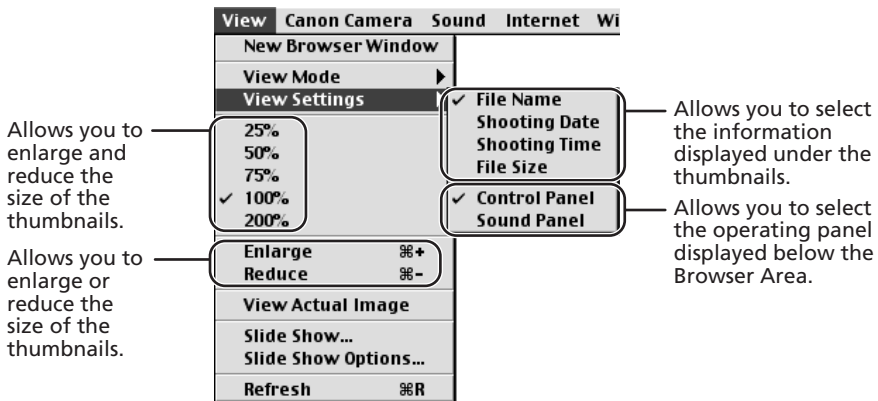
- The File Information window appears.
- If you wish to add a comment, input it in the [Comment] area.
- Click [OK] to close the window.



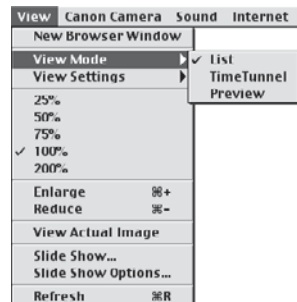
- It depends on your camcorder model which image information will be displayed.
- When you modify and save an image using another program, shooting information or comments may be lost.

[View] Menu

You can select the display settings of the Browser Area from the [View] menu.



If you select [View Mode] followed by [Preview] from the [View] menu, you can display a preview of a still image in the Browser Area. To stop displaying the preview image, select [View Mode] followed by [List] in the [View] menu.

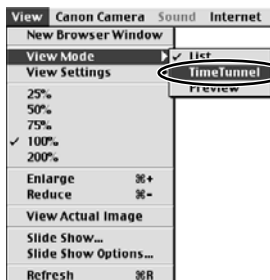


Displaying Images in TimeTunnel

This program displays images in the order of the creation date.

1. In the [View] menu, select [View Mode] followed by [TimeTunnel].

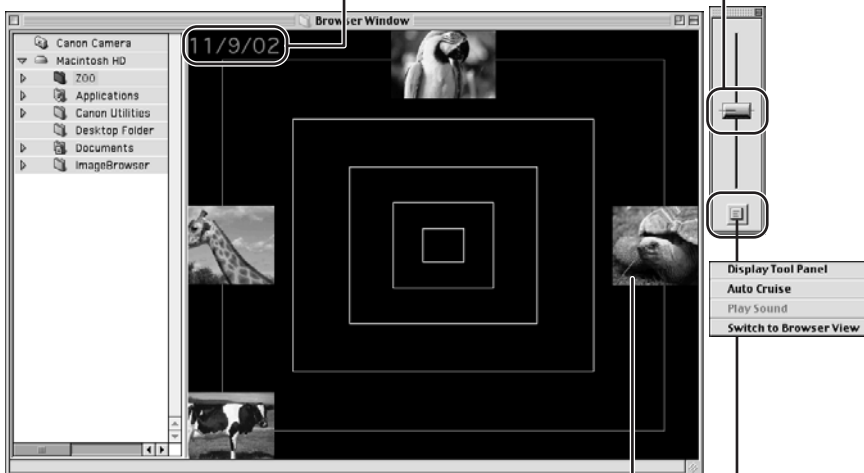
The image information will be displayed when you point at an image.



The date/time at which the images were shot appears on the red line. You can change this date/time by double-clicking it on the display. A window similar to the one below appears. Specify the new date/time.



Move the slider up or down to move backward or forward in time.



Tool Panel



Makes the TimeTunnel rings octagonal.

Double-click a thumbnail to display it in another window.

Allows you to specify the date for the images displayed.

Makes the TimeTunnel look curved.

Changes the number of TimeTunnel rings.

Click to display the control panel.

[Display Tool Panel]:

Select to display or hide the tool panel.

[Auto Cruise]:

Enables or disables [Auto Cruise]. When [Auto Cruise] is active, the time movement continues even after you have moved and released the bar.

[Switch to Browser View]:

Exit TimeTunnel, and returns to the previous screen.

Playing Back Movies From a Memory Card

E

In the Camera Window and Browser Area, movies are displayed with the first scene as a still image with a movie icon (). When you double-click the thumbnail in the Browser Area, QuickTime Player starts and plays back the movie.

1. In the Browser Area, double-click a thumbnail with a (movie) icon.

QuickTime Player starts.



2. Click the ► (play) button in QuickTime Player.

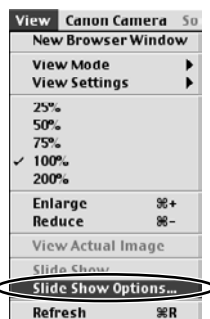
The movie will be played back.



Macintosh

Running a Slide Show

1. From the [View] menu, select [Slide Show Options].



2. Select the slide show settings and click [OK].

- [Auto Play]: Moves to the next still image automatically. Select the interval by sliding the control under [Play Interval] (from 1 to 30 seconds).
- [Control with Mouse or Keypad]: Advances the slide show manually with the mouse or keyboard.
- [Repeat Continuously]: Runs the slide show in a loop.
- [Hide buttons]: Hides the buttons during the slide show.
- [Transition Effect]: Select the transition effect to be used when moving from one slide to another. When you select an effect, you can check the effect in the preview window.



3. Select the images and select [Slide Show] from the [View] menu.

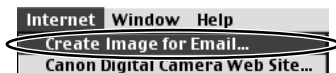
Click  on the lower right of the screen to end the slide show.

Attaching Still Images to E-mail Messages

E

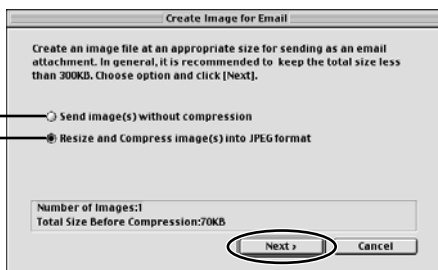
You can attach selected still images to an E-mail message.

1. Select the images you wish to send in the Browser Area.
2. From the [Internet] menu, select [Create Image for Email].



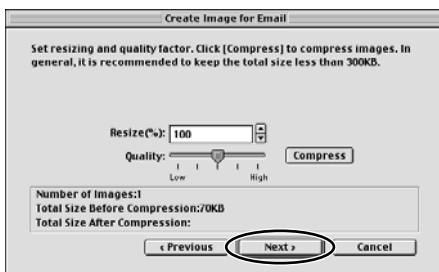
3. Specify the image size and click [Next].

Select this if you do not wish to reduce the size of the still image.
Normally, select this option.



4. Specify the reduction ratio and image quality and click [Next].

- [Resize (%)] : Select the reduction ratio relative to the original size of the image.
- [Quality] : Select the image quality. The lower the quality, the rougher the image becomes, but the size of the file also becomes smaller.
- [Compress] : Use it to check the file size when you actually compress the image. The file size appears next to "Total Size After Compression".

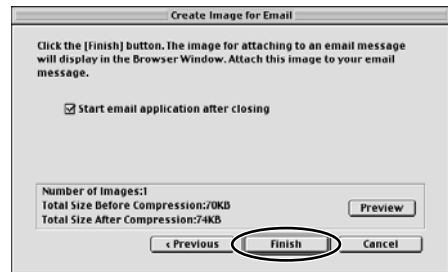


Macintosh

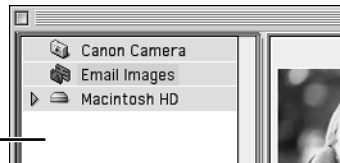
Attaching Still Images to E-mail Messages

5. Select whether you wish to start your e-mail program and click [Finish].

- If you have selected [Start email application after closing], your e-mail program starts automatically. Open a new e-mail message and attach the image. With Outlook Express or other types of e-mail programs, you can attach images to e-mail messages simply by dragging them from the Browser Area to the new message window.
- Click [Preview] to check the changed image.
- The image will be saved to the [Email Images] folder in the explorer view section.



Explorer View Section



- You can set the e-mail program to start automatically in step 5. Note that some e-mail programs may not start automatically.

Mac OS 9.0 ~ 9.2: From the Apple menu, select [Control Panel], followed by [Internet] and click the [Email] tab. Change the setting in the displayed window.

Mac OS X (10.1/10.2): From the Apple menu, select [System Preferences], followed by [Internet] and click the [Email] tab. Change the setting in the displayed window.

- The images in the [Email Images] folder are saved in the following location:

Mac OS 9.0 ~ 9.2: Open the disk you installed ImageBrowser or the [Documents] folder, followed by [ImageBrowserUserData] and [Mail].

Mac OS X (10.1/10.2): Open the [Users] folder, followed by [User login name], [Library], [Preferences], [ImageBrowserUserData], and [Mail].

Printing Still Images (ImageBrowser)

You can select the layout when printing still images.



Do not remove the memory card, detach the USB cable or turn off the camcorder while data is being transferred to the printer (when the camcorder's card access indicator is flashing). Doing so may cause memory card data to become corrupted.

E

1. Select the still image(s) you wish to print in the Browser Window.

Movies cannot be printed.

2. Click [PRINT] and select [Layout printing] from the displayed menu.

- The Layout Options window and Print window appears.
- If the Layout Options window does not appear, display it by clicking [LAYOUT OPTIONS] in the Print window.



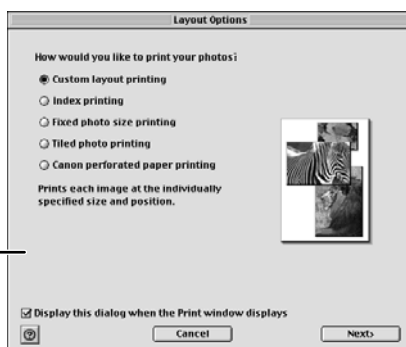
Print Window

Printing Still Images (ImageBrowser)

3. In the Layout Options window, select a layout and click [Next].

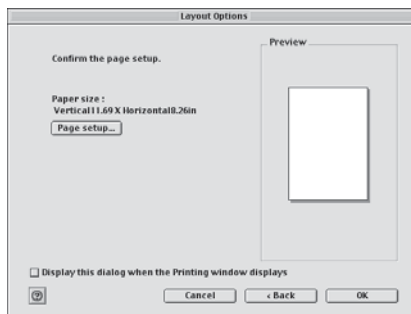
The Custom Layout printing option allows you to freely change the size and position of the still images for printing. The other options allow you to print an index or print onto Canon perforated paper. Canon perforated paper cannot be selected with Mac OS X (10.1/10.2).

Layout Options Window



4. Select a paper size and click [OK].

- The Print window opens, allowing you to change the layout and printing settings.
- The settings available will vary according to the type of layout selected in Step 3.



5. Click [PRINT] in the Print window.

The Print dialog appears.



6. Click [Print].

Printing starts.

The Print Window



Change the Image Size

Drag the border to resize the still image.

Edit the Page Title
Open the [Edit] menu and select [Edit Header].

Change the Layout
Drag the still image to change the layout.

Add Text
Open the [Edit] menu and select [Add Text].

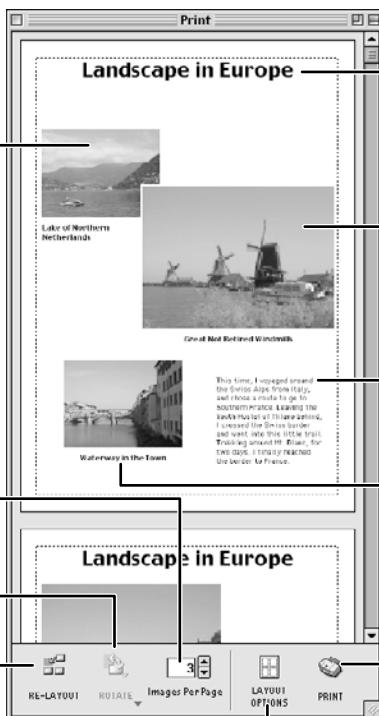
Add Captions to Still Images
Click the still image and then the [Edit] menu and select [Edit Caption].

Change the default number of still images printed per page.
Click this to rotate the selected still

Click this to reset the layout.

Click this to display the Print dialog.

Click this to select a layout type.



Printing Still Images (ImageBrowser)

Adjusting Image Quality and Printing (Exif 2.2 Compliant)

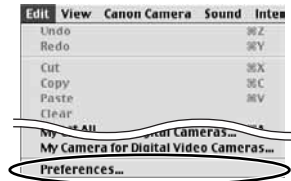
ImageBrowser allows you to print images with image quality adjustments. ImageBrowser also supports the Exif 2.2 standard (or Exif Print).



- Still images shot with camcorders complying with the Exif 2.2 standard incorporate shooting settings information, such as the shooting conditions and scene mode, along with the image data. The Exif Print adjustment protocol uses this information to correct the image quality more accurately to reflect the shooting settings.
- When printing from ImageBrowser, the image quality adjustment settings are active for all images.

Mac OS 9.0-9.2

1. Click the [Edit] menu in ImageBrowser and select [Preferences].



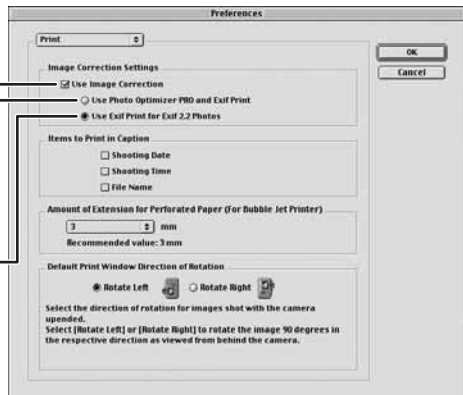
2. In the Preferences window, select [Print], set the image quality settings and click [OK].

See *Printing Still Images* for the next steps (83).

A check mark must be placed here to automatically correct the image quality.

Select this option to automatically correct images shot with Exif 2.2 compliant camcorders and other images.

Select this option to automatically correct only images shot with Exif 2.2 compliant camcorders.



1. Click the [ImageBrowser] menu in ImageBrowser and select [Preferences].



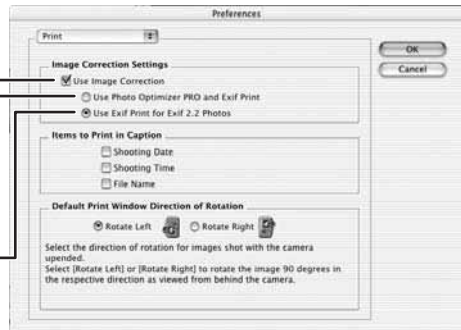
2. In the Preferences window, select [Print], set the image quality settings and click [OK].

See *Printing Still Images* for the next steps (83).

A check mark must be placed here to automatically correct the image quality.

Select this option to automatically correct images shot with Exif 2.2 compliant camcorders and other images.

Select this option to automatically correct only images shot with Exif 2.2 compliant camcorders.



Printing Still Images (ImageBrowser)

Selecting the Print Mode and Number of Copies (DPOF Print Settings)

You can select the image and the number of print (▶ print settings) for automatic printing on a DPOF*-compliant printer. You can set the DPOF print settings also on the camcorder.

*Digital Print Order Format



When you are using a SD memory card, make sure the protect switch is set to allow recording.



- You can include the date and file number in the print. Click [Edit] in the [Edit Slide/DPOF] window and select [Titles].
- The Edit Slide/DPOF window allows print settings on up to 998 still images. With some camcorders, DPOF print settings are limited to a maximum of 200 still images. In that case, all DPOF print settings on the 201st still image and onward will be erased.

1. Click (SLIDE/DPOF) in the Camera Window.

The Edit Slide/DPOF window appears.



2. Select the still image you wish to print, the print mode and the number of copies.

- [Standard Print]: Prints selected images in the specified number of copies. Use the arrows next to the boxes below the image to select the number of copies.
- [Index Printing]: Prints selected images as thumbnails (index). Place a check mark in the box under the image to include an image to the index.
- [Both (Standard/Index)]: Performs both standard print and index printing.



3. Click [Save to Camera].

The DPOF print settings will be saved to the memory card.

Merging Panoramic Images (PhotoStitch)

E

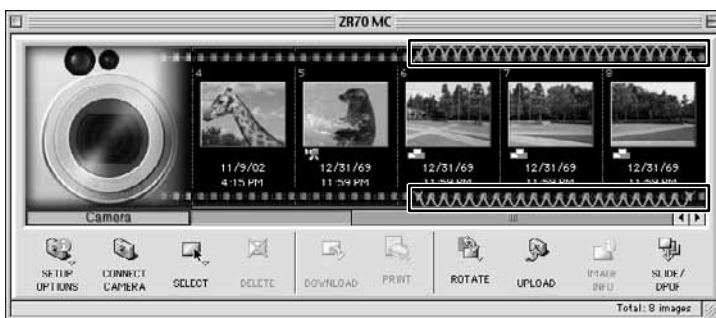
You can merge a series of overlapping images into a single, seamless panorama. PhotoStitch automatically arranges still images recorded with the camcorder's Stitch Assist mode in their correct order and orientation, making it easy to merge them. Please refer to the Camcorder Instruction Manual to learn how to record in Stitch Assist mode.

The following instruction explains how to merge still images recorded in Stitch Assist mode with the camcorder.



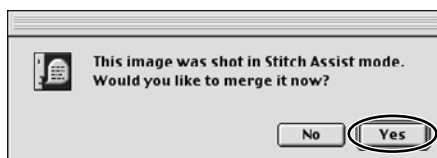
Still images recorded in Stitch Assist mode with Wide-converter or Tele-converter attached cannot be merged correctly.

1. Click the green stitch mark in the Camera Window.



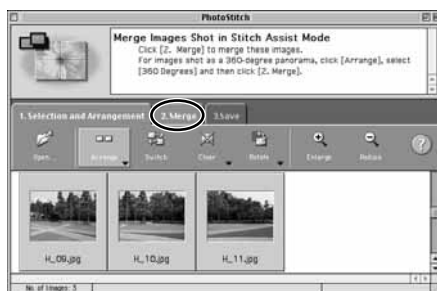
2. In the confirmation window, click [Yes].

PhotoStitch starts.



3. Arrange the order of the images and click [2.Merge].

Operational instructions are displayed in the upper section of the window.



Merging Panoramic Images (PhotoStitch)

4. Click [Start].



5. Select [3. Save] and then click [Save].

- Select the destination folder, input the file name and click [Save].
- In the View the Saved Image? window, click [Yes]. The Viewer window opens and displays the merged image.



- You can record the surroundings in 360 degrees, and stitch them together later to form a 360-degrees cylinder. (In [1. Selection and Arrangement], select [Arrange] and [360 degrees].) By saving this stitched image in QuickTime VR format, you can then get a virtual view of the surroundings.
- For more details, please refer to the ImageBrowser and PhotoStitch Help menu.

Adding Still Images from Your Computer to the Memory Card

E

You can add still images from the computer to a memory card. You can also add sample images for card mix and card animation from the DIGITAL VIDEO SOLUTION DISK.



- Still images in JPEG, TIFF, PICT, and Windows bitmap format can be added to a memory card. However, the still images will be saved in JPEG format on the memory card.
- You can also add still images to a memory card by using drag and drop to move it from the browser area to the Camera window.

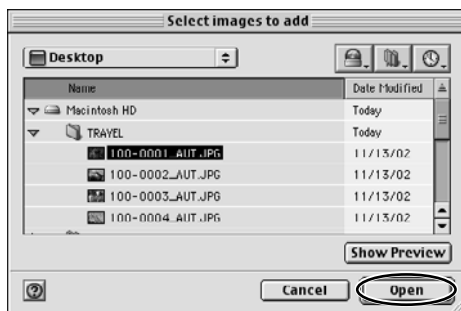
Adding Still Images to the Memory Card

1. In the camera window, click [UPLOAD].



2. Select the still image you wish to add and click [Open].

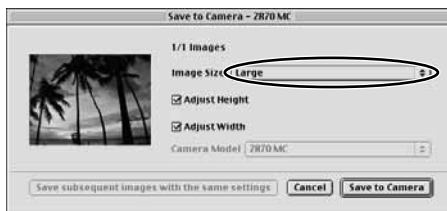
You can check the selected still image by clicking [Show Preview] in the [Select images to add] window.



Adding Still Images from Your Computer to the Memory Card

3. Select the image size.

- Confirm that your camcorder model name is displayed under [Camera model].
- [Image Size]: Select [Large] or [Small].
- [Adjust Height] and [Adjust Width] specify the standard for image enlargement and reduction.
- Still image enlargement and reduction are not performed when both [Adjust Height] and [Adjust Width] are deselected.
- When [Adjust Height] and [Adjust Width] are both selected, the aspect ratio of the still image (the ratio between the height and width of the image) may change when the still image is resized.
- When you have selected multiple images in step 2, [Save subsequent images with the same settings] will be activated. Click this button to apply the current settings to subsequent images.



4. Click [Save to Camera].

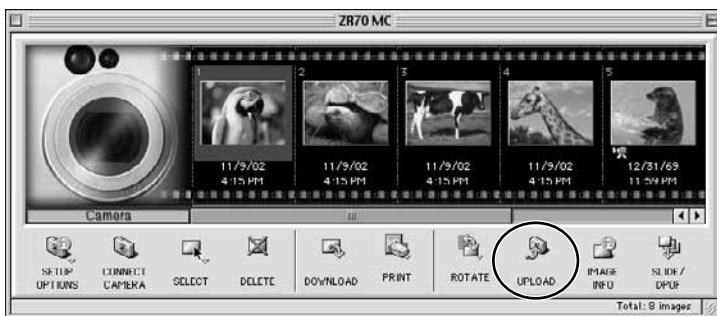
- The selected images will be recorded to the memory card.
- When recording is complete, the images will appear in the Camera Window.



Adding Sample Images to the Memory Card

You can add sample images for card mix and card animation to the memory card. 4 images for CARD CHROMA, 2 images for CARD LUMINANCE, 2 images for CAMERA CHROMA and 4 images for CARD ANIMATION are provided on the Canon DIGITAL VIDEO SOLUTION DISK.

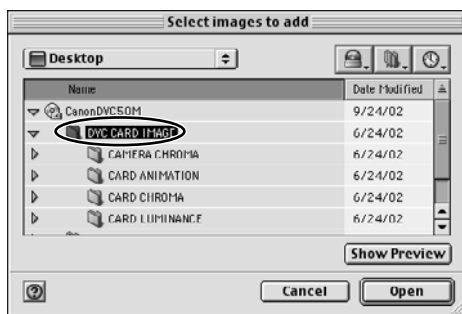
1. In the camera window, click [UPLOAD].



2. Insert the DIGITAL VIDEO SOLUTION DISK to the computer's CD-ROM drive.

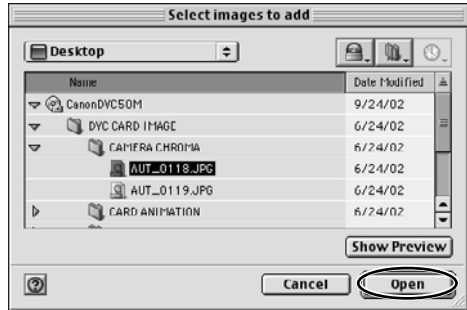
3. Double-click the CD-ROM icon, followed by the [DVC CARD IMAGE] folder.

The folders [CARD CHROMA], [CARD LUMINANCE], [CAMERA CHROMA] or [CARD ANIMATION] appear.



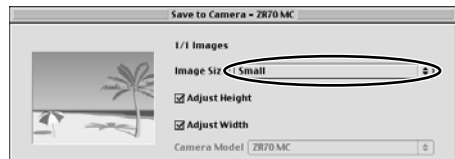
Adding Still Images from Your Computer to the Memory Card

- 4. Open the [CARD CHROMA], [CARD LUMINANCE], [CAMERA CHROMA] or [CARD ANIMATION] folder, select the image you wish to copy to the camcorder and click [Open].**



- 5. Set [Image Size] to [Small].**

- Confirm that your camcorder model name is displayed under [Camera model].
- When you have selected multiple images in step 2, [Save subsequent images with the same settings] will be activated. Click this button to apply the current settings to subsequent images.



- 6. Click [Save to Camera].**

- The selected images will be recorded to the memory card.
- When recording is complete, the images will appear in the Camera Window.



Adding a Start-up Image to the Memory Card

E

Adding a Start-up Image to the Memory Card



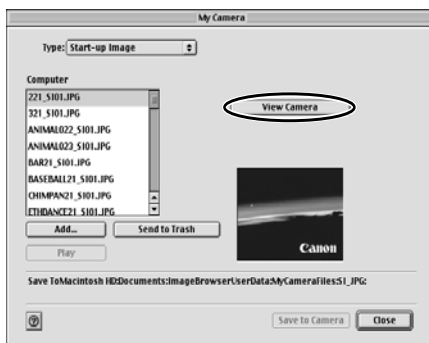
- Image files that do not appear in the [Computer] list of the DVC My Camera window cannot be saved to the camcorder.
- Do not detach the USB cable, turn the camcorder power off, or disconnect the camcorder from the computer while the My Camera Settings is being saved to the camcorder.

1. From the [Edit] menu in the Browser Window, select [My Camera for Digital Video Cameras].

The DVC My Camera window appears.



2. Click [View Camera].

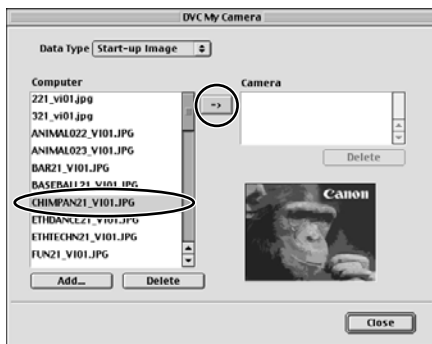


Macintosh

Adding a Start-up Image to the Memory Card

3. Select the start-up image you wish to save to the memory card from the [Computer] list and click the button.

- The selected start-up image is displayed in the preview area to the right.
- The file name of the saved start-up image appears in the [Camera] list.
- Start-up images will be saved to the [Dcim] folder in the memory card.



4. Click [Close].

Follow the instructions in *Customizing the Camcorder* in the Camcorder Instruction Manual and change the My Camera setting.

Adding New Start-up Images to the DVC My Camera Window

Create a start-up image using an image editing application program. Create the file in the JPEG format at a size of (w) 320 × (h) 240 pixels.

Once you have created the start-up image and saved it to the computer, use the following procedures to add it to the DVC My Camera window.

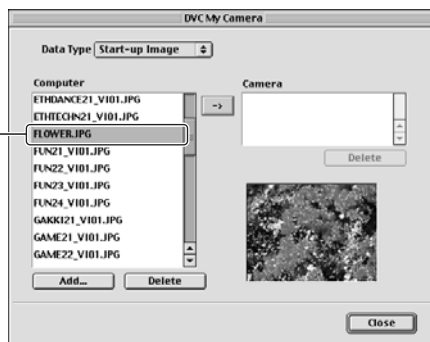
1. Open the DVC My Camera window, and click [Add].



2. Select the file you created in the [Open file] dialog and click [Open].

- The selected file appears in the [Computer] list.
- You can save the newly created file to the memory card using the procedures described in *Adding a Start-up Image to the Memory Card* (95).
- To delete a start-up image, select it and click the [Delete] button.

The newly added data will appear here



Uninstalling the Software

Uninstall the software when you wish to delete it from your computer or when reinstallation is required to fix corrupted files.

Uninstalling ImageBrowser and PhotoStitch

Move the program's folder into the Trash to uninstall programs such as ImageBrowser and PhotoStitch.



If the program folders contain subfolders into which still images/movies have been saved, be careful not to accidentally delete those subfolders.

Troubleshooting

E

This topic explains some of the causes for and solutions to problems with the software.

Cannot download images, camcorder is not recognized when the camcorder is connected via the USB interface.

→ **Computer does not support the USB interface.**

The USB interface is not supported for computers not in compliance with the following requirements. Acquire the necessary system to use the USB interface.

Requirements: Genuine Apple Computer brand computer with a built-in USB interface.

→ **There is no memory card in the camcorder.**

Insert a memory card into the camcorder.

→ **The camcorder is not set to the correct mode.**

Slide the POWER switch to PLAY (VCR) and the TAPE/CARD switch to CARD.

→ **Camcorder is not correctly connected to the computer.**

Read *Connecting the Camcorder to a Computer* (📖 64) and check the connection.

Ensure that you are using the correct cable and that its connectors are in good shape.

→ **If you are experiencing operational problems, detach the USB cable from the camcorder and computer and terminate the connection. Restart the computer and then reconnect the camcorder.**

Image files or folders do not appear in ImageBrowser.

→ **The image files may not be updated. In such case, click the [View] menu and select [Refresh].**



CANON INC.

U.S.A. ————— **Canon U.S.A., Inc.**
Canon Customer Care Center
Tel (US): 1-800-828-4040
(Mon.-Fri., 9 AM to 8 PM Eastern Time)

CANADA ————— **Canon Canada Inc.**
Tel (Canada): 1-800-OK-CANON (1-800-652-2666)

ASIA ————— **Canon Hong Kong Co., Ltd.**
9/F, The Hong Kong Club Building, 3A Chater Road,
Central, Hong Kong
Phone: 852-2739-0802
Fax: 852-2369-7701



Printed on 100% reused paper.
Document réalisé avec du papier recyclé à 100%.
El papel aqui utilizado es 100% reciclado.