

ENGLISH



Canon

Software Starter Guide

(For the Canon Digital Camera Solution Disk Version 13)

You must install the software bundled on the Canon Digital Camera Solution Disk before connecting the camera to the computer.



Windows/Macintosh

Windows

Macintosh

1 Install the software.



Windows → p. 10
Macintosh → p. 54

2 Connect the camera to the computer.



- This guide explains how to install the software programs and briefly introduces their functions and operating procedures.
- Please read the software license agreement in this guide before using the software. By using the software, you agree to be bound by the terms of the agreement.

Exif Print

DPOF

SAFETY PRECAUTIONS

The precautions noted within this guide are intended to instruct you in the safe and correct use of the products and to prevent injuries or damage to yourself, other persons and property. Please read and ensure that you understand them before proceeding to other sections of the guide.

⚠ Warnings This symbol indicates topics that could lead to death or serious injury if ignored or handled incorrectly.

⚠ Warnings

- Do not play the supplied CD-ROM(s) in any CD player that does not support data CD-ROMs. Playing the CD-ROM(s) in an audio CD player (music player) could damage the speakers. It is also possible to suffer from hearing loss from listening with headphones to the loud sounds of a CD-ROM played on a music CD player.

Disclaimer

- While every effort has been made to ensure that the information contained in this guide is accurate and complete, no liability can be accepted for any errors or omissions. Canon reserves the right to change the specifications of the hardware and software described herein at any time without prior notice.
- No part of this guide may be reproduced, transmitted, transcribed, stored in a retrieval system, or translated into any language in any form, by any means, without the prior written permission of Canon.
- Canon makes no warranties for damages resulting from corrupted or lost data due to a mistaken operation or malfunction of the camera, the software, the CompactFlash™ cards (CF cards), personal computers, peripheral devices, or use of non-Canon CF cards.

Trademark Acknowledgments

- Canon and PowerShot are trademarks of Canon Inc.
- ArcSoft, the ArcSoft logo, ArcSoft PhotoImpression and ArcSoft VideoImpression are trademarks or registered trademarks of ArcSoft, Inc.
- Adobe is a trademark of Adobe Systems Incorporated.
- CompactFlash is a trademark of SanDisk Corporation.
- iBook and iMac are trademarks of Apple Computer, Inc.
- Macintosh, PowerBook, Power Macintosh and QuickTime are trademarks of Apple Computer Inc., registered in the United States and other countries.
- Microsoft, Windows and Windows logo are either registered trademarks or trademarks of Microsoft Corporation in the United States and/or other countries.
- Netscape and Netscape Navigator are trademarks or registered trademarks of Netscape Communications Corporation in the United States and other countries. Netscape Communicator is a trademark of Netscape Communications Corporation.
- Other names and products not mentioned above may be registered trademarks or trademarks of their respective companies.

READ CAREFULLY BEFORE USING

Canon Software License Agreement

IMPORTANT - READ THIS AGREEMENT BEFORE USING THE SOFTWARE ON THE CD-ROM IN THIS BOX. BY USING THE SOFTWARE, YOU AGREE TO BE BOUND BY THE TERMS OF THIS AGREEMENT.

This is a license agreement (the "Agreement") between you and Canon Inc. ("Canon").

IF YOU DO NOT AGREE TO THE TERMS AND CONDITIONS OF THIS AGREEMENT, DO NOT USE THE SOFTWARE PROGRAM ON THE CD-ROM (INCLUDING ALL SOUND AND IMAGE DATA) AND THE USER MANUAL IN THIS BOX (COLLECTIVELY, THE "SOFTWARE") AND PROMPTLY RETURN THE SOFTWARE TO YOUR POINT OF PURCHASE FOR A REFUND.

In consideration of the right to use the SOFTWARE, you agree to abide by the terms and conditions of this Agreement.

1. **LICENSE:** Canon grants you the personal, non-exclusive right to use the SOFTWARE only on a single computer. You may physically transfer the SOFTWARE from one computer to another provided that the SOFTWARE is used on only one computer at a time. You shall not install or use the SOFTWARE on a network, multiple CPU, multiple site arrangement, or any other hardware configuration where the SOFTWARE is accessible to more than one CPU or to more than one user.

With respect to the sound and image data ("Data") contained in the Software, which are to be downloaded to the applicable Canon digital camera product, Canon grants you a personal, non-exclusive license to use the Data on a single Canon digital camera product only.

YOU SHALL NOT ASSIGN, SUBLICENSE, RENT, LEASE, LOAN, CONVEY OR OTHERWISE USE, TRANSFER, COPY, TRANSLATE, CONVERT TO ANOTHER PROGRAMMING LANGUAGE, ALTER, MODIFY, DECOMPILE OR DISASSEMBLE THE SOFTWARE, IN WHOLE OR IN PART, EXCEPT AS EXPRESSLY PROVIDED IN THIS AGREEMENT.

2. **BACK-UP COPY:** You may make one copy of the SOFTWARE solely for back-up purposes, or copy the SOFTWARE onto the permanent storage device (e.g. a hard disk) of your computer and retain the original for back-up purposes. Any other copying of the SOFTWARE is a violation of this Agreement. You must reproduce and include the copyright notice on the back-up copy.
3. **SUPPORT AND UPDATES:** Neither Canon, nor its subsidiaries, dealers or distributors will be responsible for providing maintenance or support for use of the SOFTWARE. No updates, fixes or support will be made available for the SOFTWARE.
4. **LIMITED WARRANTY AND LIMITATION OF LIABILITY:** It is your responsibility to choose, maintain and match the hardware and software components of your computer system. Thus Canon does not guarantee uninterrupted service or correction of errors or that the functions or performance of the SOFTWARE will meet your requirements. THE SOFTWARE IS LICENSED ON AN "AS IS" BASIS AND WITHOUT WARRANTY OR CONDITION OF ANY KIND. The CD-ROM storing the SOFTWARE is warranted only against defective material under normal use for a period of ninety (90) days after purchase from an authorized Canon dealer as evidenced by your sales receipt. Your sole remedy for a defective CD-ROM shall be replacement of the same without charge when returned by you at your expense to your point of purchase and proven to be defective upon inspection. The Replacement CD-ROM will be warranted for the remainder of the original ninety (90) day warranty period of the defective CD-ROM. The limited warranty does not apply if the failure of the CD-ROM resulted from accident, abuse or misapplication of the SOFTWARE and shall not extend to anyone other than the original user of the SOFTWARE.

EXCEPT AS SPECIFICALLY SET FORTH IN THIS PARAGRAPH 4, CANON, CANON'S SUBSIDIARIES, DISTRIBUTORS AND DEALERS DISCLAIM ALL WARRANTIES, OR CONDITIONS, EXPRESS OR IMPLIED, INCLUDING ANY WARRANTY OR CONDITION OF MERCHANTABILITY OR FITNESS FOR A PARTICULAR PURPOSE, WITH RESPECT TO THE SOFTWARE.

NEITHER CANON NOR ANY OF CANON'S SUBSIDIARIES, DISTRIBUTORS OR DEALERS IS LIABLE FOR ANY DAMAGES HOWSOEVER CAUSED, INCLUDING WITHOUT LIMITATION, DIRECT, CONSEQUENTIAL OR INCIDENTAL LOSS OR DAMAGE INCLUDING LOSS OF PROFITS, EXPENSE OR INCONVENIENCE HOWSOEVER CAUSED OR ARISING OUT OF THE SOFTWARE OR THE USE THEREOF.

NEITHER CANON, NOR ANY OF CANON'S SUBSIDIARIES, DISTRIBUTORS OR DEALERS SHALL HAVE ANY OBLIGATION TO INDEMNIFY YOU AGAINST ANY CLAIM OR SUIT BROUGHT BY A THIRD PARTY ALLEGING THAT THE SOFTWARE OR THE USE THEREOF INFRINGES ANY INTELLECTUAL PROPERTY OF SUCH THIRD PARTY.

SOME STATES, PROVINCES OR LEGAL JURISDICTIONS DO NOT ALLOW THE EXCLUSION OF IMPLIED WARRANTIES, OR THE LIMITATION OR EXCLUSION OF LIABILITY FOR INCIDENTAL OR CONSEQUENTIAL DAMAGES, OR PERSONAL INJURY OR DEATH RESULTING FROM NEGLIGENCE ON THE PART OF THE SELLER, SO THE ABOVE DISCLAIMERS AND EXCLUSIONS MAY NOT APPLY TO YOU.

5. **TERM:** This Agreement is effective upon your using the SOFTWARE and remains in effect until expiration of all copyright interests in the SOFTWARE unless earlier terminated. You may terminate this Agreement by destroying the SOFTWARE. This Agreement will also terminate without notice to you if you fail to comply with any of the terms of this Agreement and you must then promptly return the SOFTWARE. In addition, Canon may enforce its other legal rights.
6. **U.S. GOVERNMENT RESTRICTED RIGHTS NOTICE:**
The SOFTWARE is a "commercial item," as that term is defined at 48 C.F.R. 2.101 (Oct 1995), consisting of "commercial computer software" and "commercial computer software documentation," as such terms are used in 48 C.F.R. 12.212 (Sept 1995). Consistent with 48 C.F.R. 12.212 and 48 C.F.R. 227.7202-1 through 227.7202-4 (June 1995), all U.S. Government End Users shall acquire the SOFTWARE with only those rights set forth herein. Manufacturer is Canon Inc./30-2, Shimomaruko 3-chome, Ohta-ku, Tokyo 146-8501, Japan.
7. **EXPORT RESTRICTIONS:** You agree to comply with all export laws and restrictions and regulations of the country involved, and not to export or re-export, directly or indirectly, the SOFTWARE in violation of any such laws and restrictions and regulations, or without all necessary approvals.
8. **SEVERABILITY:**
In the event that any provision of this Agreement is declared or found to be illegal by any court or tribunal of competent jurisdiction, such provision shall be null and void with respect to the jurisdiction of that court or tribunal and all the remaining provisions of this Agreement shall remain in full force and effect.
9. **CONTROLLING LAW:** The terms of this Agreement as it relates to purchases of the Software in the United States of America shall be governed and construed in all respects in accordance with the laws and regulations of the State of New York, without reference to choice of law principles. The terms of this Agreement as it relates to purchases of the Software in Canada shall be governed by the laws of the province of Ontario.
10. **OWNERSHIP:** All rights, including but not limited to copyrights and trade secret rights, to the SOFTWARE belong to Canon, its affiliated corporations and third party licensors. Your use of the SOFTWARE is subject to the laws of the United States, and Canada, and other applicable copyright and trademark laws, and nothing in this Agreement constitutes a waiver of the rights of Canon, its affiliated corporations and third party licensors under such laws. You only own the CD-ROM media in which the Software is stored. Except as expressly provided herein, no license or right, express or implied, is hereby conveyed or granted by Canon to you for any intellectual property of Canon. Nothing contained in Paragraph 1 shall be construed to give Canon any ownership rights in any images, graphics or textual material that you save in connection with the Software.
You may not modify, remove or delete any or all copyright notices (i) which are contained in the Software, including any copy thereof, and (ii) which are on the original CD-ROM and on the medium of a back-up copy made pursuant to Section 2 above.
11. **ACKNOWLEDGEMENT:** BY USING THE SOFTWARE, YOU ACKNOWLEDGE THAT YOU HAVE READ THIS AGREEMENT, UNDERSTOOD IT, AND AGREE TO BE BOUND BY ITS TERMS AND CONDITIONS. YOU ALSO AGREE THAT THIS AGREEMENT IS THE COMPLETE AND EXCLUSIVE STATEMENT OF AGREEMENT BETWEEN YOU AND CANON CONCERNING THE SUBJECT MATTER HEREOF AND SUPERSEDES ALL PROPOSALS OR PRIOR AGREEMENTS, VERBAL OR WRITTEN, AND ANY OTHER COMMUNICATIONS BETWEEN THE PARTIES RELATING TO THE SUBJECT MATTER HEREOF. NO AMENDMENT TO THIS AGREEMENT SHALL BE EFFECTIVE UNLESS SIGNED BY A DULY AUTHORIZED OFFICER OF CANON.

Table of contents

Table of contents	iii
Read This First	1
It's so Simple! Make Prints Right at Home Like a Pro	2
Unbounded Possibilities with Entertaining Software	4
About the CD-ROMs in Your Package	6
System Requirements	7
Using the Software on the Windows Platform	9
- Preparations -	
Installing the Software and USB Driver	10
Using the Software on the Windows Platform	17
- The Basics -	
Starting ZoomBrowser EX	18
Downloading Images to the Computer	22
Printing Images	25
Using the Software on the Windows Platform	29
- Advanced Techniques -	
The ZoomBrowser EX Windows	30
Replaying Movies	32
Converting RAW Images - File Viewer Utility	33
Merging Panoramic Images - PhotoStitch	36
Operating the Shutter Remotely - RemoteCapture	38
Enjoy Customizing Your Camera with the My Camera Settings ...	45
Using the Software on the Macintosh Platform	53
- Preparations -	
Installing the Software	54
Using the Software on the Macintosh Platform	57
- The Basics -	
Starting ImageBrowser	58
Downloading Images to the Computer	65
Printing Images	68

Using the Software on the Macintosh Platform	71
- Advanced Techniques -	
Replaying Movies	72
Converting RAW Images - File Viewer Utility	73
Merging Panoramic Images - PhotoStitch	76
Operating the Shutter Remotely - RemoteCapture	78
Enjoy Customizing Your Camera with the My Camera Settings ..	85
Information about Your Camera	91
Information Common to All Models	92
PowerShot G5	94
PowerShot S50	95
PowerShot S400 DIGITAL ELPH/DIGITAL IXUS 400	96
PowerShot SD100 DIGITAL ELPH/DIGITAL IXUS II	97
PowerShot A70	98
PowerShot A60	99
PowerShot A300	100
Appendices	101
About the CD-ROMs in Your Package	102
Uninstalling the Software	106
Memory Card Folder Structure	110
Troubleshooting	111
Index	120

Read This First

This chapter explains what you can accomplish using the camera with the software contained on the Canon Digital Camera Solution Disk.

It also lists the computer system configurations required to use the software.

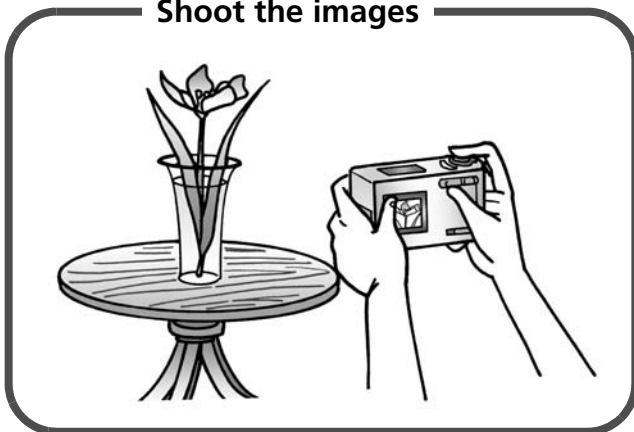
About this Guide

- The explanations in this guide are based on Windows XP and Mac OS X v10.2. If you are using another version of these operating systems, the actual screen contents and procedures may vary slightly from those shown.
- This guide uses the following notations on the right to represent the items on the left.

Mac OS X (v10.1/10.2)	->	Mac OS X
Mac OS 9.0 - 9.2	->	Mac OS 9
CF Card, SD Card, PC Card	->	Memory Card

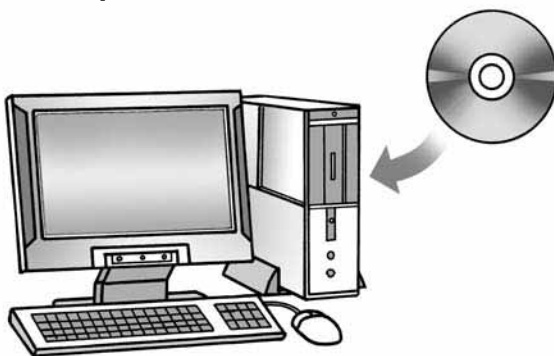
It's so Simple! Make Prints Right at Home Like a Pro

Shoot the images



See your *Camera User Guide* for shooting instructions.

Install the software on the
computer



Just install the software once at the beginning.

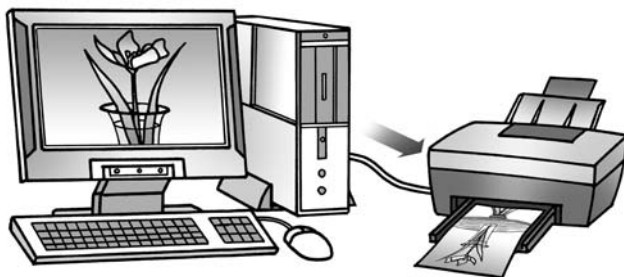
Connect the camera to the computer



Download images to the computer



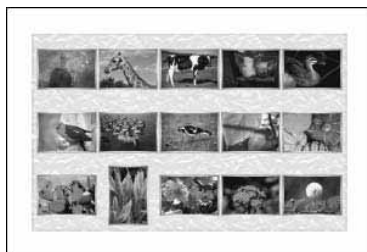
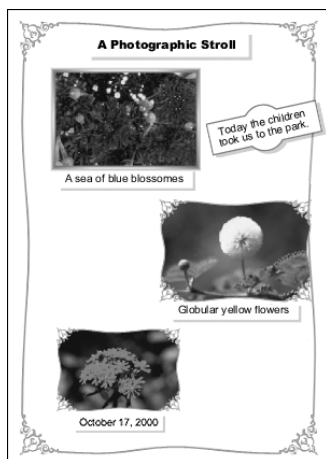
Print the images



Unbounded Possibilities with Entertaining Software

Print a Variety of Layouts

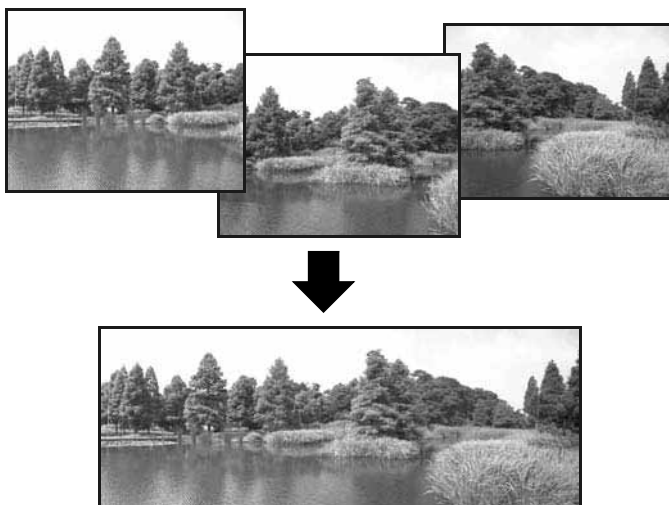
Print with the diverse layouts available in PhotoRecord (Windows) and ImageBrowser (Macintosh).



The examples shown are from PhotoRecord (Windows).

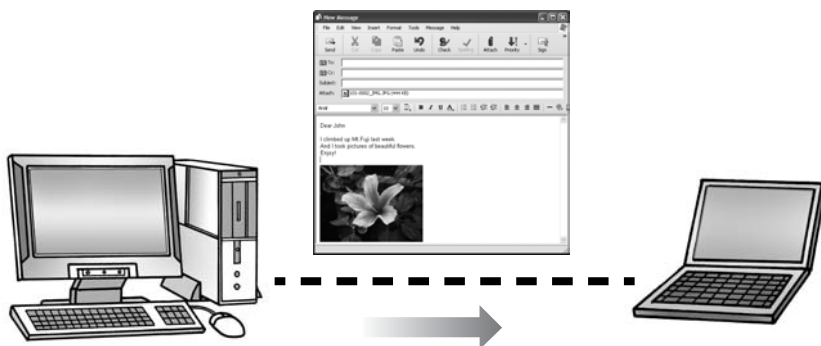
Stitch a Panorama Together

Create a panoramic image from a series of images with PhotoStitch.



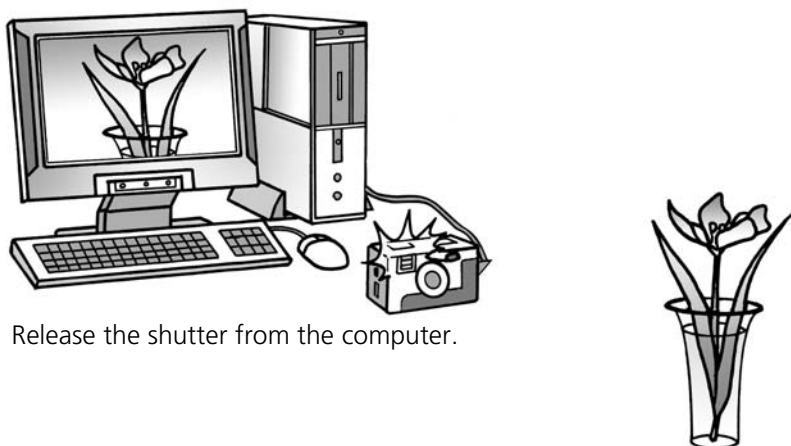
Send an Image as an E-mail Attachment

Attach an image to an e-mail message by starting your mail software from within ZoomBrowser EX (Windows) or ImageBrowser (Macintosh).



Operate the Camera Shutter from the Computer

Release the camera's shutter from the computer with RemoteCapture. The recorded image is saved directly to your computer.



Release the shutter from the computer.

Convert RAW Images

Use the File Viewer Utility to convert RAW-format images downloaded to the computer into standard photo formats, such as the TIFF and JPEG formats. It can make fine adjustments to the image quality and coloring during conversion. (RAW format images can only be recorded by select camera models.)

About the CD-ROMs in Your Package

About the Supplied Software

In addition to the Canon Digital Camera Solution Disk, your camera may be accompanied by other CD-ROMs containing image editing software. Your choice of camera model will determine which disks are included.

See *Information about Your Camera* (p. 91) to read which disks are included with your model.

For a description of the features and installation procedures for the software on the CD-ROMs, see *About the CD-ROMs in Your Package* (p. 102).

System Requirements

Please install the software on a computer meeting the following minimum requirements.

Windows

OS	Windows 98 (First or Second Edition) Windows Millennium Edition (Windows Me) Windows 2000 Windows XP (Home Edition, Professional)
Computer Model	The above OS should be pre-installed on computers with built-in USB ports.
CPU	Windows 98/ Windows Me/ Windows 2000: Pentium 150MHz or better Windows XP: Pentium 300 MHz or better
RAM	Windows 98/ Windows Me/Windows 2000: 64 MB or more Windows XP: 128 MB or more
Interface	USB
Free Hard Disk Space	<ul style="list-style-type: none"> • Canon Utilities <ul style="list-style-type: none"> - ZoomBrowser EX: 120 MB or more (Including the PhotoRecord printing program) - File Viewer Utility: 100 MB or more - PhotoStitch: 40 MB or more - RemoteCapture: 20 MB or more • Canon Camera TWAIN Driver: 25 MB or more • Canon Camera WIA Driver: 25 MB or more
Display	800 x 600 pixels/ High Color (16 bit) or better is required 1,024 x 768 pixels or better is recommended



- A CD-ROM drive is required to install the software.
- A sound card is required to play movie audio tracks.
- All procedures performed with a connection to a USB 2.0 compliant board are not guaranteed.

Macintosh

OS	Mac OS 9.0 - 9.2, Mac OS X (Version 10.1/ 10.2)
Computer Model	The above OS should be pre-installed on computers with built-in USB ports.
CPU	PowerPC
RAM	Mac OS 9.0 - 9.2: 64 MB or more of application memory Mac OS X (Version 10.1/ 10.2): 128 MB or more
Interface	USB
Free Hard Disk Space	<ul style="list-style-type: none"> • Canon Utilities <ul style="list-style-type: none"> - ImageBrowser: 50 MB or more - File Viewer Utility: 100 MB or more - PhotoStitch: 30 MB or more - RemoteCapture: 15 MB or more
Display	800 x 600 pixels/ 32,000 Colors or better is required 1,024 x 768 pixels or better is recommended



- A CD-ROM drive is required to install the software.
- ImageBrowser, File Viewer Utility, PhotoStitch and RemoteCapture are compatible with Mac OS X (v10.1/10.2). However, they are not compatible with disks formatted with the Unix File System (UFS).
- All procedures performed with a connection to a USB 2.0 compliant board are not guaranteed.

Using the Software on the Windows Platform

- Preparations -

This chapter explains the basic procedures for installing the software and connecting the camera to a computer. Read this material before you connect the camera to the computer.

Installing the Software and USB Driver

Start by installing the software from the Canon Digital Camera Solution Disk.



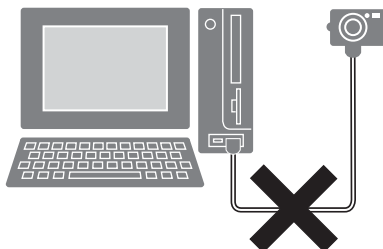
- You must install the software before you connect the camera to the computer.
- Users of Windows XP Professional and Windows 2000 must first log in as an Administrator (computer system administrator) to install programs.

Items to Prepare

- Your computer
- Canon Digital Camera Solution Disk supplied with the camera

Installation Procedures

- 1** Confirm that the camera is NOT connected to the computer. If it is, disconnect it and the cable from the computer.

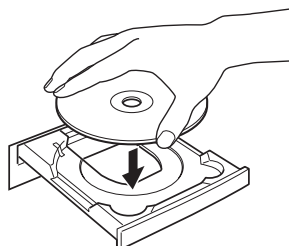


- 2** Close any programs that are running.

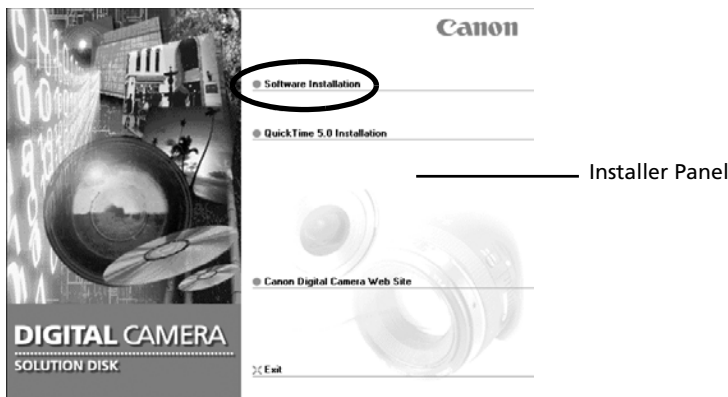
- 3** Place the Canon Digital Camera Solution Disk in the computer's CD-ROM drive.

The installer panel will display automatically.

If the installer panel does not appear automatically, use the procedures in *How to Display the Installer Panel* on the next page.



4 Click [Software Installation].




5 Click [Next].

6 Read the software license agreement and click [Yes] if you consent to all the conditions.


How to Display the Installer Panel

Use the following procedures to display the installer panel if it does not appear automatically.

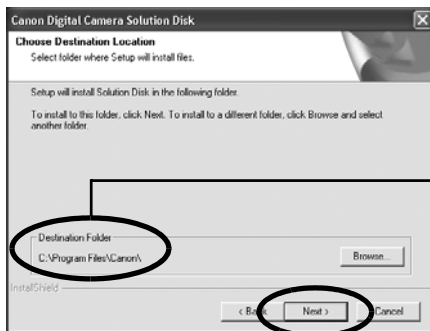
Windows XP

1. Select [My Computer] from the [Start] menu.
2. Right-click the CD-ROM icon and select [Open].
3. Double-click the [Setup.exe]  icon.

Windows 2000, Windows Me, Windows 98

1. Double-click the [My Computer] icon on the desktop.
 2. Right-click the CD-ROM icon and select [Open].
 3. Double-click the [Setup.exe]  icon.
- (Some computers may not display the [.exe] file name extension as shown above.)

7 Confirm the installation destination and click [Next].



Installation destination

8 Select the programs you wish to install and click [Next].

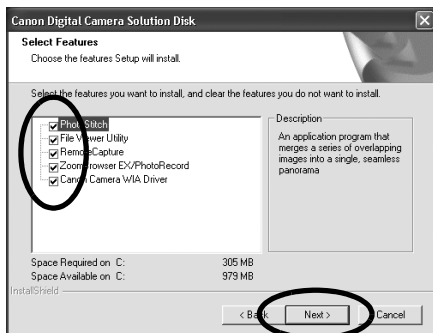
Confirm that there is a check mark beside the names of the programs you wish to install.



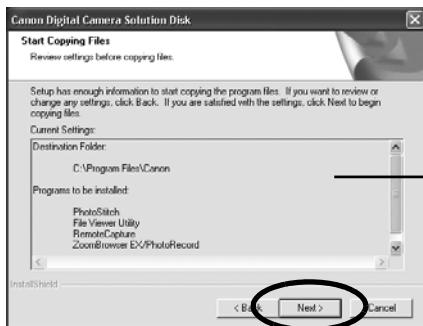
The USB Driver (the software for connecting) is required when the camera is connected to the computer with a USB cable. Ensure that you select a USB driver from below (the appropriate one for your operating system).

- Windows 2000:Canon Camera TWAIN Driver
- Windows Me:Canon Camera WIA Driver
- Windows 98:Canon Camera TWAIN Driver

With Windows XP, the USB Driver supplied with the Windows operating system is used so there is no need to install a USB Driver.



9 Review the installation settings and click [Next].

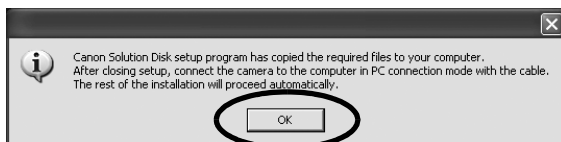


The items displayed here differ according to the software installed.

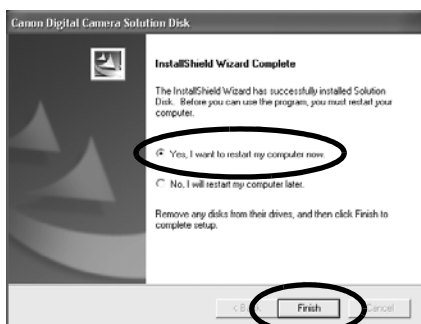
The installation will start. Follow the onscreen instructions to proceed.

10 Click [OK] if the following message appears.

This message will display if you selected and installed the USB Driver in Step 8.



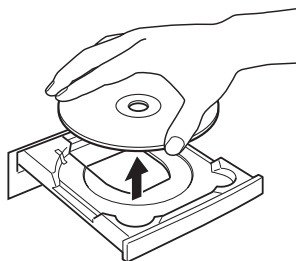
11 When the installation is over, select [Yes, I want to restart my computer now.] and click [Finish].



Users of Windows XP Professional and Windows 2000 must log in as an Administrator (computer system administrator) after restarting to carry out the subsequent procedures.

12 Remove the disk from the CD-ROM drive when your normal desktop screen appears after restarting.

This concludes the software installation. Continue by connecting the camera to the computer so that the USB Driver can be utilized.



If you installed a USB Driver, so far the required files have only been copied to your computer. You must now connect the camera to the computer with the USB cable to complete the installation and prepare the driver for use.



See *Uninstalling the Software* (p. 106) to delete the software installed with these procedures.

13 Attach the camera to the computer and set it to the correct mode for connecting.



Procedures for attaching the camera to the computer and placing it in the correct mode for connecting vary between camera models. See *Information about Your Camera* (p. 91) for details.

The USB Driver will automatically finish installing onto the computer when you attach the camera and open a connection. Dialogs similar to the following ones will appear during this process (first connection only).

Windows XP

The following dialog will appear after a few moments and the USB Driver supplied with the Windows operating system will automatically install.



Windows 2000/Windows Me/Windows 98

The "Add New Hardware Wizard" will appear after a few moments and the USB Driver will automatically install.



The USB Driver selected in Step 8 will automatically install.

Restart the computer according to the instructions if you are prompted to do so by a message.

The Events dialog will appear after installation, allowing you to select an application to start. The explanation for these procedures is contained in *Using the Software on the Windows Platform-The Basics* (p. 17).



- See *USB Driver Installation not proceeding well* in the *Troubleshooting* section (p. 112) if you are having problems installing the USB Driver.
- See *Uninstalling the USB Driver* (p. 107) to delete the USB Driver installed with these procedures.
- See *If You Were Using ZoomBrowser EX Version 2 or 3* (p. 119) if you were previously using either version.

This concludes the software and USB Driver installation and the procedures for connecting the camera to the computer.

You may now download camera images to the computer (p. 17).

MEMO

Using the Software on the Windows Platform

- The Basics -

This chapter explains the procedures for using ZoomBrowser EX to download the camera's images to the computer and print them.

Read this chapter after completing the preparations in the *Using the Software on the Windows Platform - Preparations* - section.

Starting ZoomBrowser EX

Begin by starting up ZoomBrowser EX. The startup procedures vary according to whether you are connecting the camera to the computer or using a memory card reader.

Camera to Computer Connection

- 1 Attach the supplied USB cable to the computer's USB port and the camera's Digital Terminal. Prepare the camera for communication with the computer.



Procedures for attaching the camera to the computer and placing it in the correct mode for connecting vary between camera models. See *Information about Your Camera* (p. 91) for details.

A dialog (Events dialog) similar to that below will appear after a moment. Select the application program you wish to start from the list in this dialog.



Your camera model name or "Canon Camera" will appear here.

Select an application program here.



If the above dialog (Events dialog) does not appear, start ZoomBrowser EX with the procedures described in *If the Events Dialog Does not Appear* on the next page.

2 Select [Canon ZoomBrowser EX] and click [OK].

ZoomBrowser EX will start and open its Camera Window. The camera images will display as thumbnails (tiny versions) in the Camera Window.



A dialog allowing you to select the camera model will display if a camera and a memory card reader are connected at the same time. Confirm that your model name or "Canon Camera" is displayed and click [OK].

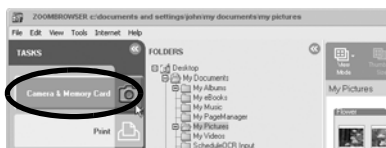
If the Events Dialog Does not Appear

Use the following procedures to start ZoomBrowser EX and display the Camera Window.

- 1 Double-click the [ZoomBrowser EX] icon on the desktop.

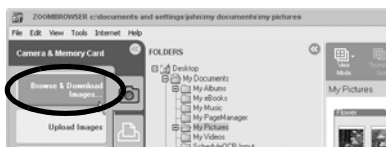


- 2 Click [Camera & Memory Card] when ZoomBrowser EX starts.



- 3 Click [Browse & Download Images] in the next menu.

This will display the Camera Window.

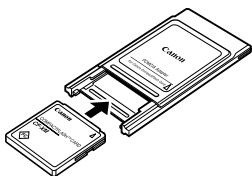


Next, download images to the computer (p. 22).

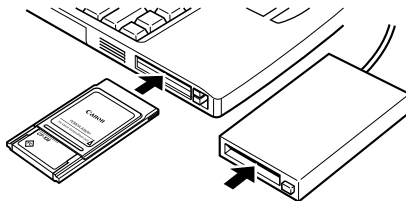
Memory Card Connection

1 Insert the memory card into the reader.

Use a separately sold card adapter (PCMCIA adapter) if required.
See the manual for the memory card for its connection and handling instructions.



Place the memory card in an adapter if required.



Insert the loaded adapter into the slot.

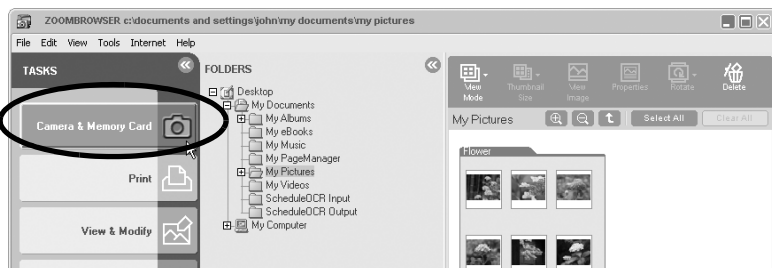
2 Start ZoomBrowser EX.

Double-click the [ZoomBrowser EX] icon on the desktop.

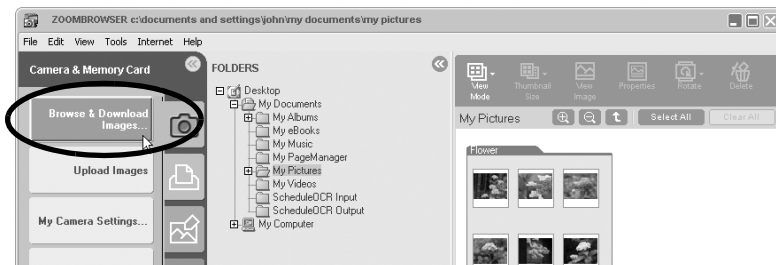


ZoomBrowser
EX

3 Click [Camera & Memory Card].



4 Click [Browse & Download Images] in the next menu.



This will display the Camera Window. The memory card images will display as thumbnails (tiny versions) in the Camera Window.

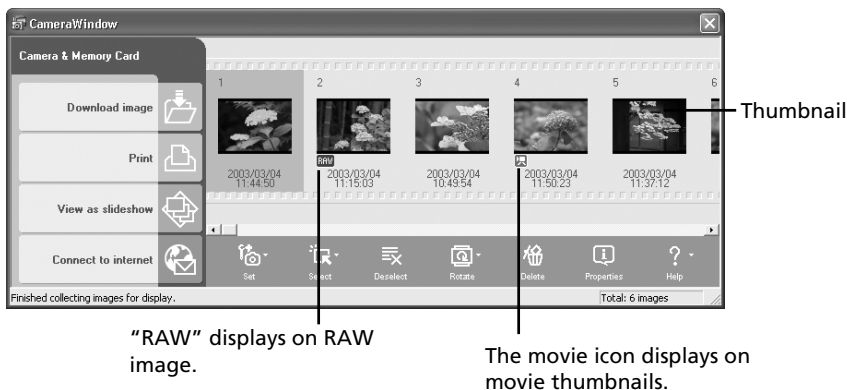


- A selection dialog will appear if multiple memory card readers loaded with memory cards are connected or if a camera and memory card reader are connected. Select one of the devices and click [OK].
- See *Memory Card Folder Structure* (p. 110) for information about memory card folder structures and file names.

Next, download images to the computer (p. 22).

Downloading Images to the Computer

- 1 Click on images in the Camera Window that you wish to download. The background color of the selected images will change to orange.



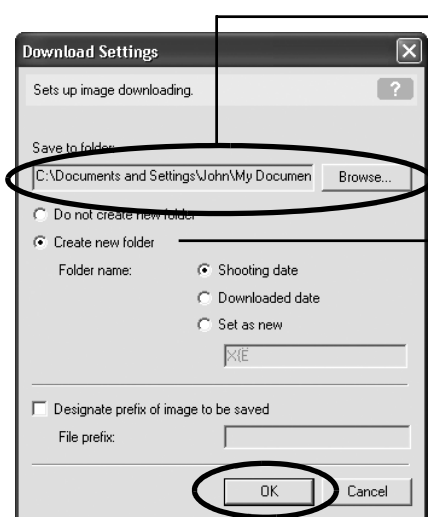
If you are downloading images previously selected with the camera's [Transfer Order] setting, click [Select] and select [Select Send Mark].

- 2 Click [Download Image].



A Download Settings dialog allowing you to select the image destination folder will display.

3 Confirm the destination folder and click [OK].



Specify the destination folder for the image(s).
(You can change the destination folder by clicking [Browse] and selecting a new destination.)

Select [Create new folder] to create a new folder within the one specified above, and select a naming option.

At this point the Camera Window will close and the Main Window will open. The downloaded images will appear in the Main Window.



Main Window

Continue by printing out an image (p. 25).



After step 3 is completed, the [Server Busy] window may appear. If this happens, click [Retry]. (p. 118)

Other Methods of Downloading Images to the Computer

*** Windows XP**

Your camera uses a standard image transfer protocol called the Picture Transfer Protocol (PTP). With the PTP and Windows XP, all you need do is connect the camera to the computer with a USB cable to download images. It is easy using the Scanners and Cameras Wizard and other procedures. (You do not even need to install ZoomBrowser EX or the USB Driver.) However, there are some inconveniences and limitations to this downloading method. See the *For Windows® XP and Mac OS X Users* leaflet for details.

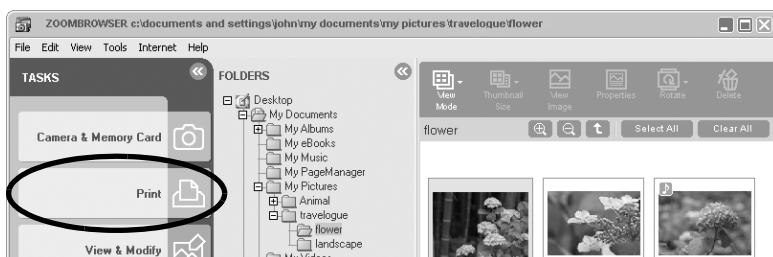
*** Windows Me (with the USB Driver installed)**

It is easy to download images using the Scanners and Cameras Wizard or Windows Explorer. All you need do is connect the camera to the computer with a USB cable. (ZoomBrowser EX does not need to be installed.) However, you cannot download RAW format images or movies with these methods.

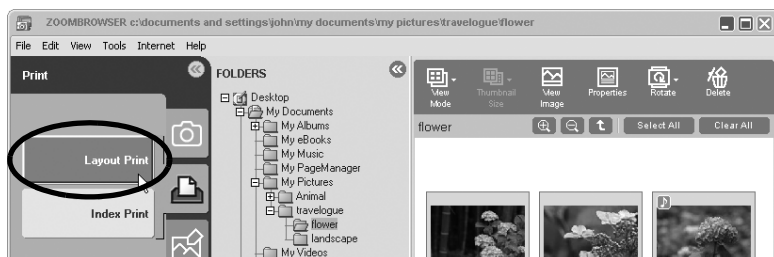
See the Windows Help system for information about the Scanners and Cameras Wizard and Windows Explorer.

Printing Images

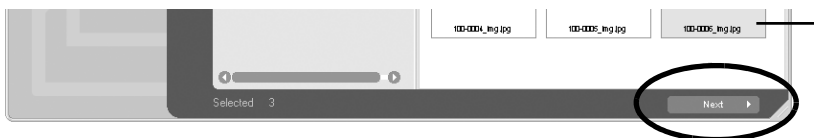
- 1 Click [Print] in the Main Window.



- 2 Click [Layout Print] in the next menu.



- 3 Click on the image(s) you wish to print and click the [Next] button at the window's bottom right.

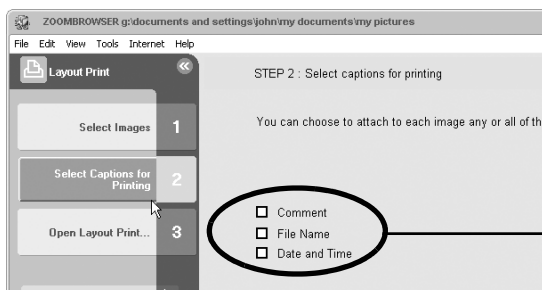


The background color of the selected images will change to orange.



Movies cannot be printed.

- 4** Place a check mark beside the data you wish to include with the print (multiple selections are possible) and click [Finish].



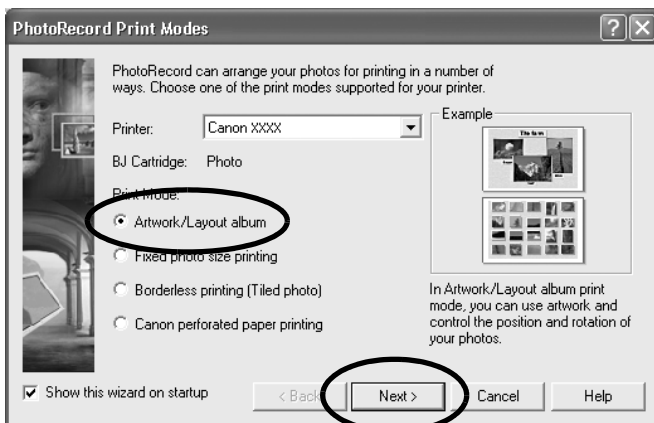
For example, you can print the shooting date and time with the image if you select [Date and Time] here.

The PhotoRecord printing utility will start and display the PhotoRecord Print Modes window.



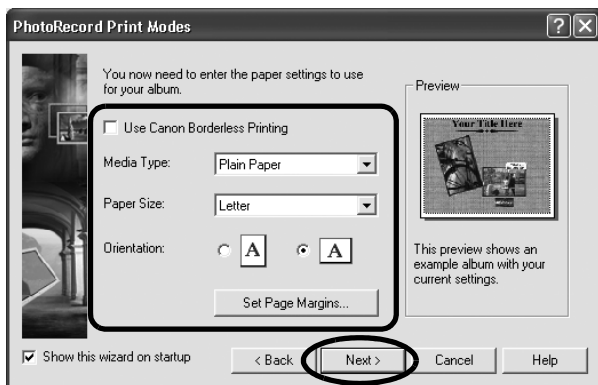
A comment can be attached to an image by selecting it in ZoomBrowser EX, clicking [Properties] and typing the comment.

- 5** Confirm that [Artwork/Layout album] is selected and click [Next].

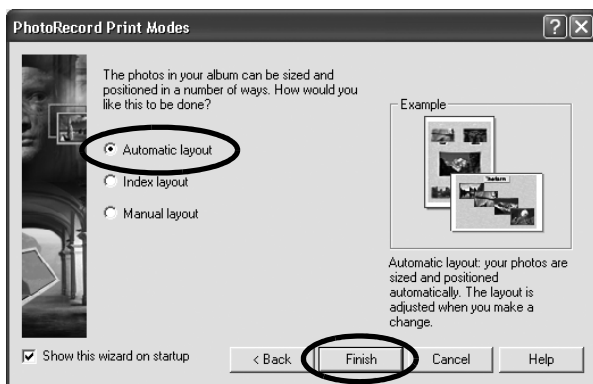


- When you select "Artwork/Layout album", you can resize or reposition images freely for printing.
- The other print modes allow you to do such things as tile the images for printing or arrange them for printing on Canon perforated paper.

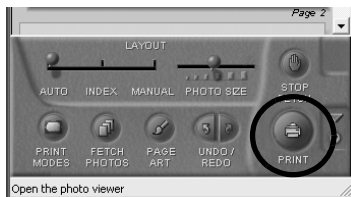
- 6** In the next window, set the paper size and the other settings and click [Next].



- 7** In the last window, select [Automatic layout] and click [Finish]. This will display the PhotoRecord window.



- 8** Click the PhotoRecord [Print] button. This will display the Print dialog.



9 Click [Print] to start printing.



- The Index Print Settings dialog will open if you select [Index Print] in Step 2 and complete steps 3 and 4. You can select the settings, such as the thumbnail size and paper size, and click [Print] to start an index print.
- Images shot with Exif 2.2-compliant cameras (Exif Prints) incorporate information about the shooting settings, such as the camera modes and settings. Better prints can be made by using this information to correct the image. To correct image quality, right-click an image and select [Clip/Correct Photo] from the pop-up menu. Place a check mark beside [Exif Print] or [Photo Optimizer Pro] in the next window and click [Close] to have it corrected. You should obtain better results when the image is printed.

This concludes the image printing process.

This chapter explained the ZoomBrowser EX basics. Once you have mastered them, read the following chapter to try the advanced techniques. *Using the Software on the Windows Platform - Advanced Techniques* (p. 29).



A PDF-format manual for ZoomBrowser EX is also available. It provides further information about the program's features and procedures. See *Using the PDF Manuals* (p. 105).

Using the Software on the Windows Platform

- Advanced Techniques -

This chapter explains various ZoomBrowser EX features, such as how to play movies, create panoramic images and operate the camera shutter from the computer.

Proceed to this chapter once you have mastered the basic ZoomBrowser EX procedures in the *Using the Software on the Windows Platform - The Basics* chapter.

The ZoomBrowser EX Windows

ZoomBrowser EX has two windows: the Camera Window and the Main Window. This topic explains the features of these two windows.

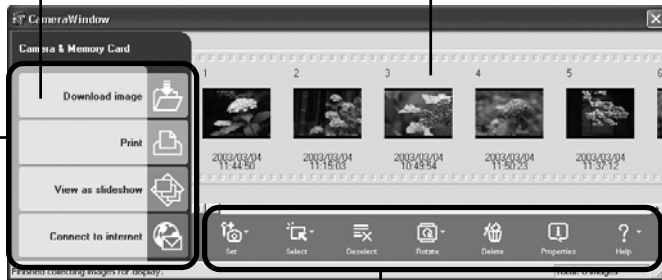
Camera Window

This window can be used to view images in the camera (or memory card) and download them to the computer.

A window allowing you to specify the download destination opens when you select images and click the [Download image] button.

The images from the camera (or memory card) display here.

Task Buttons
These buttons select the task to carry out.



Function Buttons
These buttons apply functions to images selected in the Camera Window.



ZoomBrowser EX comes with a function that rotates, downloads and displays images, shot vertically or horizontally, in their correct viewing orientation. (Rotating images does not affect image quality)

Only the rotated image is saved to the computer with the following camera and image settings.

- When JPEG images are shot with the camera's [Auto Rotate] function set to [On].
- When JPEG images are rotated with the camera's manual rotation settings.
- When JPEG images are rotated in the Camera Window.

To download both the pre-rotation and post-rotation images, click the [Tools] menu in ZoomBrowser EX's Main Window and select [Preferences], followed by the [Rotate] tab. Place a check mark beside [Rotate a copy of the JPEG image].

Main Window

This window can be used to organize the images downloaded to the computer. It can also be used for other purposes, such as printing images and attaching them to e-mail messages.

Folders Area

Select image folders here. As in Windows Explorer, you can view the contents of the folders.

Function Buttons

These buttons apply functions to images selected in the Browser Area.



Task Buttons

These buttons select the task to carry out.

Browser Area

Displays the images contained in the folder selected in the Folders area. Double-clicking an image shows it at a larger size.

Replaying Movies

When you double-click an image with a movie icon in the ZoomBrowser EX's Browser Area, QuickTime Player will start and replay the movie.

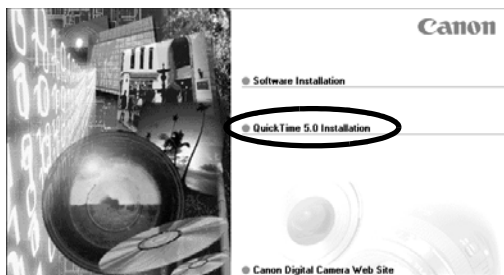
- 1** Double-click an image with a movie icon. QuickTime Player will start.
- 2** Click the play button  in QuickTime Player. The movie will replay.



Do not double-click a movie file (.AVI extension) in the Windows Explorer to play it. That will start Windows Media Player, which may not support this file type. To replay movies, use ZoomBrowser EX as instructed above, or if you are using Windows Explorer, start QuickTime Player first and open the file from within the program.

Installation Procedures for QuickTime

1. Set the Canon Digital Camera Solution Disk in the CD-ROM drive. The installer panel will automatically appear. (Display it with the procedures in *How to Display the Installer Panel* (p. 11) if it does not appear.)
2. Click [QuickTime 5.0 Installation].



Follow the onscreen instructions to proceed with the installation.

Converting RAW Images - File Viewer Utility

Images can be recorded in the RAW format (RAW images) with certain camera models. RAW images are extremely high-quality images that are not degraded by compression algorithms when recorded. However, they are not supported by most image editing programs in their native format, so they must be converted before use.

Use the File Viewer Utility to convert RAW images.



- See *Information about Your Camera* (p. 91) to see if your camera supports the RAW format.
- See your *Camera User Guide* for the settings required to shoot RAW images.

Converting RAW Images

- 1** Click [View & Modify] in ZoomBrowser EX's Main Window and [Process RAW Images] in the next menu.
- 2** Select a RAW image in the Browser Area and click [Finish].
The File Viewer Utility will start and display the selected RAW image in the list.
- 3** Perform image quality adjustments as required.
See *Image Adjustment Features* (p. 35) for instructions.
- 4** Click the [File] menu and select [Save File] and [Convert and save in file].
This will display the Save File dialog.
- 5** Select a file destination and format for the image you wish to convert.
You can save the image in the JPEG or TIFF format.
- 6** Click [OK].
The utility will start to convert the image and save it to the computer.

File Viewer Utility Features

Preferences Button

Use this button to select image transfer applications. You can also use it to adjust RAW image processing settings.

Save Button

Converts and saves the image.

Buttons for selecting images.

Image Selection Button

Selects the method for selecting images.

Help Button

Displays help topics.

Version Information Button

Displays the program version information.

Displays a histogram (distribution of brightness data) for the image.

Displays the image information here.

Display Mode List Box

Selects the thumbnail or preview display mode.

Comment Box

A description of up to 60 characters can be input here.

Display Size List Box

Selects the size at which images display.

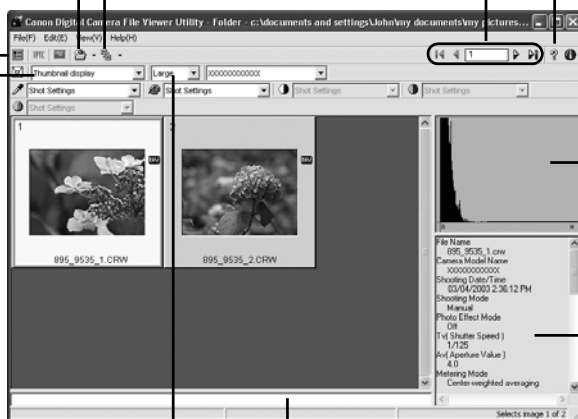


Image Adjustment Features

The following items will display when you select a RAW image and a camera model name in the Model-Specific Processing Mode list box.

This section displays when a camera model name is selected in the Model-Specific Processing Mode list box.

Model-Specific Processing Mode List Box
Selects the model of camera in use.

Click this button and then a white portion of an image to automatically adjust the white balance to that color.

Adjusts sharpness.

Adjusts white balance settings.

Sets the Photo Effect mode.

Adjusts image contrast.

Adjusts image color saturation.



To adjust image contrast, color saturation and sharpness, select [Custom Effect] for the Photo Effect mode setting.

Merging Panoramic Images - PhotoStitch

You can create a wide panoramic image by merging several images, such as those shot in the camera's Stitch Assist mode. Use the PhotoStitch program to merge the images.

Starting PhotoStitch

Start PhotoStitch from ZoomBrowser EX.

- 1 Click [View & Modify] in the ZoomBrowser EX's Main Window and [Stitch Photos] in the next menu.
- 2 Select a series of images in the Browser Area and click [Finish].
A window similar to that below will appear.



Follow the instructions to merge the images.

- 3 Merge the images following the instructions in the guidance panel at the top of the PhotoStitch window.



- QuickTime 3.0 or a later version is required to save the merged image in the QuickTime VR format. (QuickTime is supplied on the Canon Digital Camera Solution Disk.)
- Images shot in Stitch Assist mode with a wide converter, teleconverter or close-up lens cannot be merged accurately.

Images Shot in Stitch Assist Mode

It is easy to merge images shot with the camera's Stitch Assist mode since PhotoStitch automatically arranges them in the correct order and orientation. Stitch Assist mode images appear in the Camera Window as shown below.

Images shot in Stitch Assist mode display a mark like this.



- You can start PhotoStitch by clicking the mark shown on images shot in Stitch Assist mode.
- See the *Camera User Guide* for information about shooting in Stitch Assist mode.

Operating the Shutter Remotely - RemoteCapture

You can use a computer to control the shutter of a connected camera to record still images. This is particularly useful for checking images on the larger computer display as you record them.

Start the RemoteCapture program to perform this task.

Starting RemoteCapture

Start RemoteCapture from ZoomBrowser EX.



Close the ZoomBrowser EX Camera Window before starting RemoteCapture.

- 1** Attach the supplied USB cable to the computer's USB port and the camera's Digital terminal. Prepare the camera for communication with the computer.



Procedures for attaching the camera to the computer and placing it in the correct mode for connecting vary between camera models. See *Information about Your Camera* (p. 91) for details.

- 2** Open the lens cover or remove the lens cap on models equipped with them.
Proceed to Step 3 if your model does not have one.
- 3** Select [ZoomBrowser EX] in the dialog (Events dialog) that allows you to select an application program, and click [OK].
This will start ZoomBrowser EX and display its Camera Window.
- 4** Close the Camera Window.
This will open ZoomBrowser EX's Main Window.
- 5** Click [Camera & Memory Card], then [Remote Shooting] in the next menu.
This will start RemoteCapture.
- 6** Click [Connect] when the "Connect to camera?" prompt appears.
This will display the Shooting - RemoteCapture window.

RemoteCapture Features

RemoteCapture has two windows: the Shooting-RemoteCapture window and the Save-RemoteCapture window. Use these windows to record and save images, respectively.

Shooting-RemoteCapture Window

Detail Settings

The Detail Settings dialog opens when you click the arrow symbol on the left.

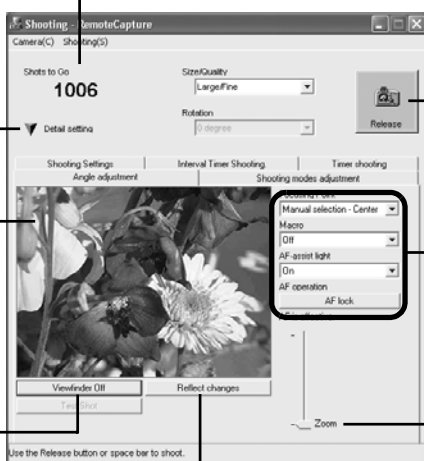
Recordable Image Counter

Displays the number of images that will fit onto the computer or memory card in the camera.

Viewfinder Display
Click the [Viewfinder On] button while a connection to the camera is open to display the image appearing in the camera's viewfinder.

Viewfinder On/Off Button

Turns the viewfinder display on or off.



Release Button
Releases the shutter.

Set the basic camera settings here.

Slide this to zoom the camera in or out.

Reflect Changes Button
Updates the settings.



RemoteCapture locks the exposure and focus settings for the subject matter in the Viewfinder section. If the lighting or distance to the subject changes, click [Reflect changes] to reset these settings.



The following limitations apply when the Viewfinder image is displayed with a DIGITAL ELPH/DIGITAL IXUS series camera.

- The Viewfinder will automatically turn off after you shoot or after 1 minute passes after it is turned on. Click [Viewfinder On] again to turn it back on. However, you may have to wait a moment for it to come back on if the camera body temperature has risen.
- The camera's LCD monitor does not display while the Viewfinder is on. In addition, the Video OUT settings cannot be set with RemoteCapture.

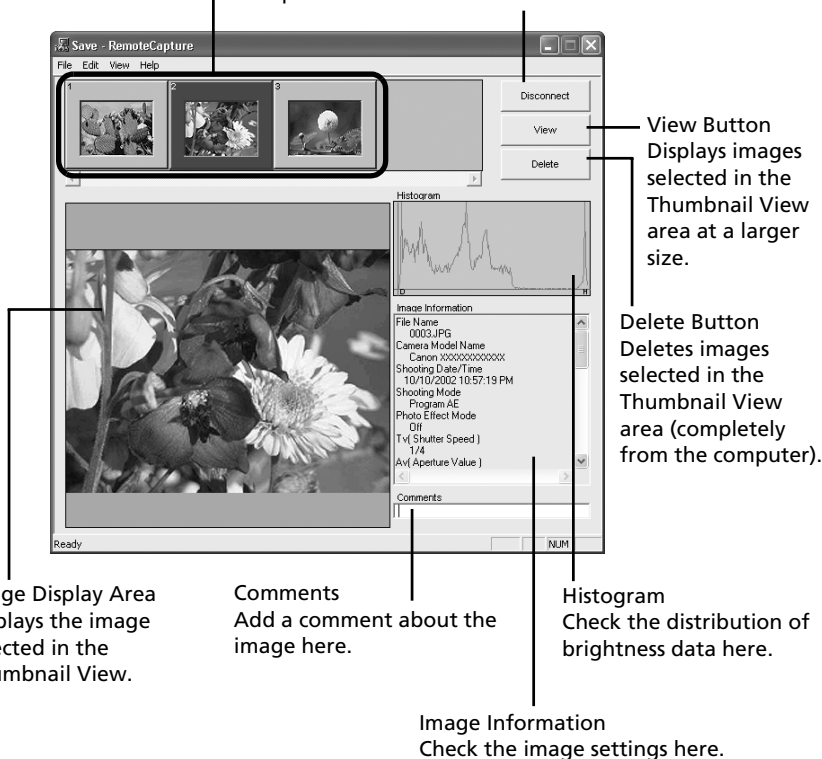
Save-RemoteCapture Window

Thumbnail View

Displays thumbnails of all the images shot after RemoteCapture is started.

Connect/Disconnect Button

Click here to open a connection to the camera and display the Shooting-RemoteCapture window. It will change to the Disconnect button while a connection is open. Click it to close the connection.



Shooting with RemoteCapture



If your computer is set to go into standby mode, there is no guarantee that RemoteCapture will continue to function after the computer enters standby mode. Always turn off the standby function before you start shooting with RemoteCapture.

1 Click the arrow to the left of [Detail Settings].

The full-view Shooting-RemoteCapture window will display.

2 Click [Viewfinder On] and view the image in the Shooting-RemoteCapture window.

Change the settings if required. To update any changes made in the Detail settings window, click the [Reflect changes] button.

3 Set the Size/Quality and Rotation settings in the Shooting-RemoteCapture window.

You can save images of people and other subjects that are shot in portrait orientation (camera held 90° on end) to the computer in the correct viewing orientation by setting the [Rotation] category to [90 degree Left] or [90 degree Right].



- The rotation settings in RemoteCapture cannot be used if your camera is equipped with the Auto Rotate function and it is set to On.
- To change the destination of the saved image, see *Changing the File Destination and Method of Saving* (p. 43).

4 Click the [Release] button.

Images shot with RemoteCapture are automatically saved to the folder selected in ZoomBrowser EX.



- You can also release the shutter by pressing the camera's shutter button or the keyboard's space key.
- The zoom controls and other camera buttons and switches, except for the shutter button, cannot be operated while RemoteCapture is controlling the camera.
- You may notice that the interval between the shutter release and activation is slightly longer when RemoteCapture is used to shoot than when the camera is used in the normal fashion.

Interval Timer Shooting

Interval timer shooting is a method of shooting that records a specified number of frames at set intervals.

- 1** In the Shooting-RemoteCapture window, click the [Interval Timer Shooting] tab.
This will display the Interval Timer Shooting window.
- 2** Set the number of frames and the interval value and click [Start].
This will record the specified number of frames at the specified interval.



- You can set the time interval between 5 seconds to 60 minutes.
- You can capture up to the number of recordable frames displayed in the Shooting-RemoteCapture window (the actual limit is 9999 frames when the displayed number is 10,000 or higher).



Please note that the camera will not be able to shoot at the specified interval if it is shorter than the time required to transmit the data and save it to the computer.

Timer Shooting

Timer shooting is a method of shooting that records a frame after a specified number of seconds.

- 1** In the Shooting-RemoteCapture window, click the [Timer Shooting] tab.
The Timer Shooting window will display.
- 2** Set the timer interval and click [Start].
This will record an image after the specified time has elapsed.



- You can specify a timer interval from 2 to 30 seconds.

Other Features

Changing the File Destination and Method of Saving

- 1 In the Save-RemoteCapture window, click the [File] menu and select [Preferences].

This will display the Preferences dialog.

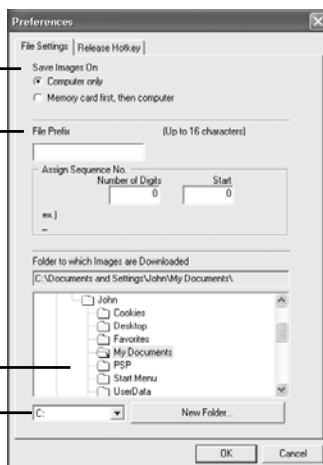
- 2 Select the way images are saved and the folder to which they are saved and click [OK].

Sets whether images are saved only to the computer or to both the computer and the memory card in the camera.

Input a root name for the image files here. If you input "Capture", for example, the first image will be named [Capture_00001.jpg] and successive images will automatically be assigned a name that is one number higher than the last.

Select a folder where images will be saved.

Select the drive on the computer where images will be saved.



Selecting [Computer only] in the "Save Images On" category allows you to shoot when there is no memory card in the camera or when the camera's memory card is full.

Displaying the Subject in the Camera's LCD Monitor

You can view the subject you are shooting in the camera's LCD monitor.

- 1 In the Shooting-RemoteCapture window, click the [Camera] menu and select [Camera Display Settings].

The Camera Display Settings dialog will display.

- 2 Select [Camera LCD monitor] and click [OK].
- 3 In the Shooting-RemoteCapture window, click the [Viewfinder On] button.



You can display the subject on a TV connected to the camera by selecting [Video Out terminal] in Step 2. See the *Camera User Guide* for instructions to connect the camera to a TV.

Printing an Index of the Thumbnail Images

You can print an index of all the thumbnails displayed in the Thumbnail View area of the Save-RemoteCapture window by clicking the [File] menu and selecting [Print Index]. This provides a convenient register and means of checking your images since the file name and shooting date are also printed with each image.

Enjoy Customizing Your Camera with the My Camera Settings

The start-up image, start-up sound, shutter sound, operation sound, and self-timer sound are called the My Camera Settings. You can add your favorite images and sounds from your computer to the My Camera Settings in the camera. This topic explains how to upload the My Camera Settings saved onto your computer to the camera. Use ZoomBrowser EX to perform this function.

Displaying the My Camera Window

To save the My Camera Settings to the camera, you use the My Camera window. The following explains the procedures for displaying the My Camera window.

- 1 The Camera Window will open after you have connected the camera to the computer and started ZoomBrowser EX.

For starting instructions for ZoomBrowser EX, see *Starting ZoomBrowser EX* (p. 18).

- 2 Click [Set] in the Camera Window and select [My Camera] in the pop-up menu.

Alternatively, you can click [Camera & Memory Card] in the Main Window of ZoomBrowser EX, followed by [My Camera Settings] to display the My Camera window.



ZoomBrowser EX already contains several pre-recorded My Camera Settings items. You can check these items with the My Camera window.

The My Camera Window Features

Tabs

Click here to switch between adjusting the settings individually or in themed sets. If the [Set individually] tab is selected, the Data Type can also be selected.

Play Button

Click here to play sounds recorded onto the camera.

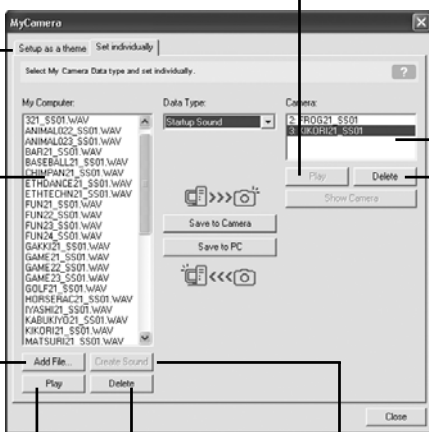
Displays the list of My Camera Settings files saved onto the computer.

Add File Button

Click here to add a file as one of the My Camera Settings to the My Computer list.

Play Button

Click here to play the selected sound setting.



Displays the My Camera Settings in the camera.

Delete Button
Deletes a setting from the Camera list.

Delete Button

Click here to delete a setting from the My Computer list.

Create Sound Button

Click here to create a sound file for use as the start-up sound, shutter sound, operation sound, or self-timer sound.



- The Create Sound button is unavailable when you open the My Camera window from the Camera Window.
- You can add new data to the My Camera window. See *Adding New Data to the My Camera Window* (p. 48).

Saving the My Camera Settings to the Camera

You can save the My Camera Settings displayed in the My Camera window to the camera.



- My Camera Settings can be selected and saved in either of two ways to the camera: individually or in theme sets.
- The “Animal” theme, for example, features an animal in the start-up image and animals calls in each of the sound files. The names of the prepared files for the various My Camera Settings themes all begin with the same root name, such as “Animal~”. For example, the start-up image that starts with “Animal~” shows an animal picture while the similarly named sound files feature animal sounds.



- Settings that do not appear in the My Computer list of the My Camera window cannot be saved to the camera.
- Do not detach the USB cable, turn the camera power off or disconnect the camera from the computer while the My Camera Settings are being saved to the camera or the settings from the camera are being saved to the computer.

1 Confirm that the [Setup as a theme] tab is selected in the My Camera window.

To save the settings individually, select the [Set individually] tab and select the setting type in the [Data Type] list box.

2 Select the settings file you wish to save to the camera from the My Computer list.

If you are working in the [Setup as a theme] tab, the thumbnail (tiny version) of the start-up image will display to the right and the sound files will play in the order of start-up sound, shutter sound, operation sound and self-timer sound.

3 Select the setting from the Camera list that you would like to change and click [Save to Camera].

This concludes the process of saving the My Camera settings to the camera. The Camera list setting will change to the selected file. If a setting for this category has previously been saved to the camera, it will be overwritten.

Repeat steps 1-3 as required.

To use this data on the camera, change the start-up image and sound settings on the camera itself. Please see the *Camera User Guide* for these instructions.

Saving the Camera's My Camera Settings to the Computer

The My Camera Settings on the camera can be saved to the computer.



My Camera Settings can be selected and saved in either of two ways to the computer: individually or in theme sets.

- 1 Confirm that the [Setup as a theme] tab is selected in the My Camera window.

To save the settings individually, select the [Set individually] tab and select the setting type in the [Data Type] list box.

- 2 Select the settings file(s) from the Camera list that you wish to save to the computer.

If you are working in the [Setup as a theme] tab, the thumbnail (tiny version) of the start-up image will display to the right and the sound files will play in the order of start-up sound, shutter sound, operation sound and self-timer sound.

- 3 Click [Save to PC].

This concludes the process of saving the My Camera settings to the computer.

Repeat steps 1-3 as required.

Adding New Data to the My Camera Window

To add new data to the My Camera window, you need to create it, save it to the computer and add that file to the My Camera window.

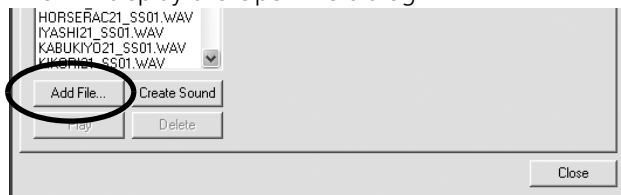
Create an Original Start-up Image File and then Add It

Start by creating the image file that will become the start-up image and save it to the computer. Use an image editing program, such as ArcSoft PhotoStudio. Create the file in the JPEG format at a size of (w) 320 x (h) 240 pixels.

Once you have created the data and saved it to the computer, use the following procedures to add it to the My Camera window.

- 1 Open the My Camera window, click the [Set individually] tab, select [Startup Image] from [Data Type] and click the [Add File] button.

This will display the Open file dialog.



2 Select the file you created and click [Open].

The selected file will appear in the Computer list.

This concludes the process for adding new data.

You can save the newly created data to the camera using the procedures described in the *Saving the My Camera Settings to the Camera* section (p. 47).



To delete a setting, select the file name and click the [Delete] button at the bottom of the My Computer list.

Create an Original Sound File and then Add It

The following example shows how to record and create a start-up sound file using the My Camera Sound Maker window.

QuickTime is required to play the recorded sound.

1 Click [Camera & Memory Card] in the Main Window of ZoomBrowser EX and select [My Camera Settings] in the next menu.

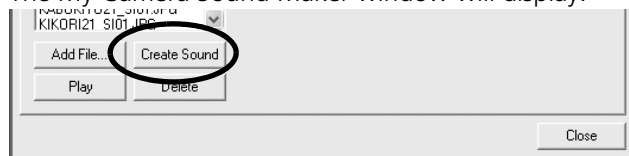
The Select My Camera dialog will display.

2 Select [Start-up Image, Start-up Sound, Operation Sound, Selftimer Sound and Shutter Sound] and click [OK].

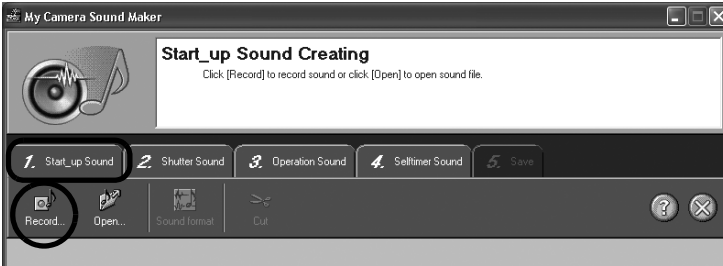
The My Camera window will display.

3 In the My Camera window, select [Set individually], select a sound type in the [Data Type] and click the [Create Sound] button in the My Camera window.

The My Camera Sound Maker window will display.

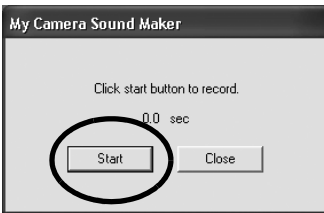


- 4** Click the tab of the sound file you will be creating, followed by the [Record] button. Click the [Start_up Sound] tab in this example.



To open a sound file already saved to the computer, click the [Open] button in place of the [Record] button. Then skip to Step 8.

- 5** Click the [Start] button.

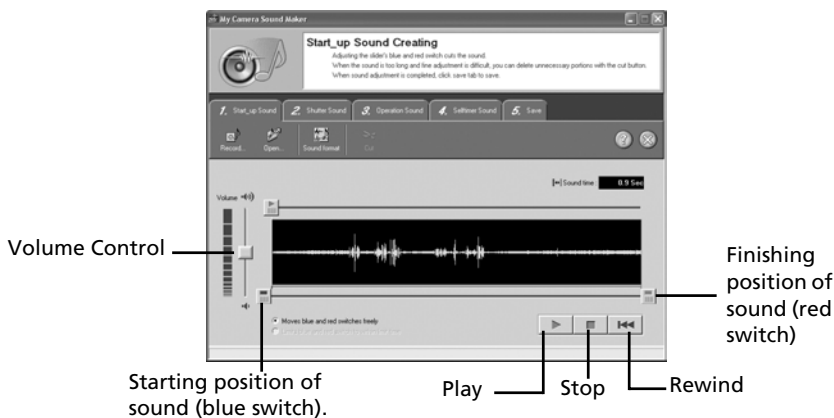


Recording will start.

- 6** When the recording is complete, click the [Stop] button, followed by the [Close] button.

Recording will stop after 30 seconds elapses even if the Stop button is not clicked. In that case, just click the [Close] button.

The following window will appear.



- 7** Click the [Sound Format] button as required and select a sound format.
- 8** Edit the sound data so that it conforms to the time limits.
Adjust the time of the recording with the blue or red switch.
The extra data outside the starting and finishing switches can be erased by clicking the [Cut] button.
- 9** Click the [Save] tab, confirm that the sound file was created, input a file name and then save it.
- 10** Click the [Save] button, add a file name and save it.



Repeats steps 4-10 as required to create sound files for the shutter sound, operation sound and self-timer sound.

- 11** Click to close the My Camera Sound Maker window.

12 Click the [Add File] button in the My Camera window.



In the Open dialog, select the file you created and click [Open].
The selected file will appear in the Computer list.

This concludes the process for adding a file to the My Camera settings. You can add the file to the camera with the procedures described in the *Saving the My Camera Settings to the Camera* section (p. 47).



- To delete a setting, select the file name and click the [Delete] button at the bottom of the My Computer list.
- Record the sound as an 11.025 kHz or 8.000 kHz, 8 bit, mono sound in the WAV format. The following chart shows standard time lengths for My Camera Sounds.

Type	Duration in Seconds	
	11.025 kHz	8.000 kHz
Start-Up Sound	1.0 sec. or less	1.3 sec. or less
Shutter Sound	0.3 sec. or less	0.4 sec. or less
Operation Sound	0.3 sec. or less	0.4 sec. or less
Self-Timer Sound	2.0 sec. or less	2.0 sec. or less

Using the Software on the Macintosh Platform

- Preparations -

This chapter explains the basic procedures for installing the software. Read this material before you connect the camera to the computer for the first time.

Installing the Software

Start by installing the software from the Canon Digital Camera Solution Disk.

Items to Prepare

- Your computer
- Canon Digital Camera Solution Disk supplied with the camera

Installation Procedures

- 1 Close any programs that are running.
- 2 Place the Canon Digital Camera Solution Disk in the computer's CD-ROM drive.
- 3 Double-click the CD-ROM icon, followed by the [Mac OS X] and [Canon Digital Camera

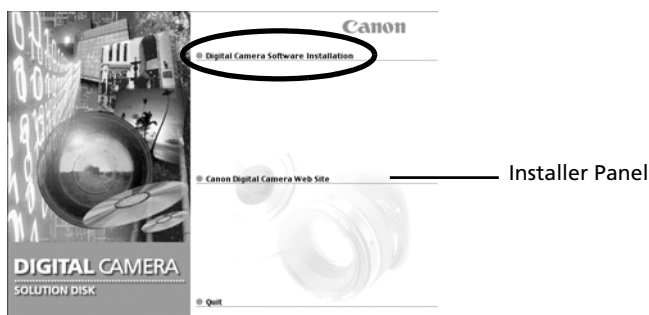
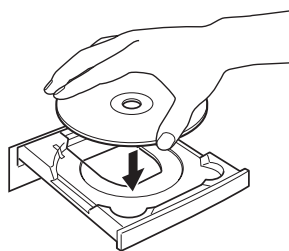
Installer]  icons.

With Mac OS 9, double-click the CD-ROM icon, followed by the [Mac OS 9] and [Canon Digital

Camera Installer]  icons.

The installer panel will display automatically.

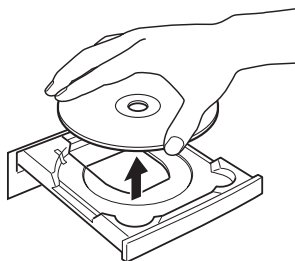
- 4 Click [Digital Camera Software Installation].



This will start the installation.

Follow the onscreen instructions to proceed with the installation.

- 5 Remove the disk from the CD-ROM drive when the installation is complete.



See *Uninstalling the Software* (p. 109) to delete the software installed with these procedures.

This concludes the software installation.
Continue by downloading images to the computer (p. 65).

MEMO

Using the Software on the Macintosh Platform

- The Basics -

This chapter explains the procedures for using ImageBrowser to download the camera's images to the computer and print them.

Read this chapter after completing the preparations in the *Using the Software on the Macintosh Platform - Preparations* - section.

Starting ImageBrowser

Begin by starting up ImageBrowser. The startup procedures vary according to whether you are connecting the camera to the computer or using a memory card reader.

Camera to Computer Connection


Mac OS X

- 1 Attach the supplied USB cable to the computer's USB port and the camera's Digital Terminal. Prepare the camera for communication with the computer.



Procedures for attaching the camera to the computer and placing it in the correct mode for connecting vary between camera models. See *Information about Your Camera* (p. 91) for details.

iPhoto or Image Capture will automatically start when the camera and computer are ready to connect. If either of these programs does not start, proceed to Step 3.

- 2 Click  at the upper left of the iPhoto or Image Capture window to close it.
- 3 Double-click the [Canon ImageBrowser] icon on the desktop.
If the Canon ImageBrowser icon does not appear on the desktop, double-click the [Canon Utilities] folder on the drive on which the program was installed, followed by the [ImageBrowser] folder and [ImageBrowser] icon.
- 4 Click [Canon Camera] in the Explorer View section.



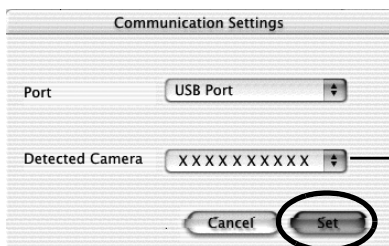
Canon ImageBrowser



Explorer View Section


The Communication Settings dialog will display.
This dialog will only appear for the first connection.

- 5** Confirm that [USB port] is selected as the port option and that your camera model name or [Canon Camera] are selected as the detected camera. Click [Set].



Your camera model name or [Canon Camera] and the USB port number (e.g. @1) will appear here.

iPhoto or Image Capture may automatically start up at the same time as the Camera Window. Step 6 is not required when neither program starts up automatically.

- 6** Click the  icon at the top left of the iPhoto or Image Capture window to close the program.
- 7** Confirm that the images from the camera are displayed as thumbnails (tiny versions) in the Camera Window.



Thumbnail

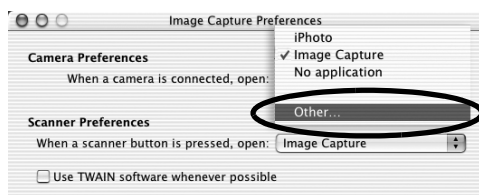
Camera Window

How to Set ImageBrowser to Start Automatically with Mac OS X

You can have ImageBrowser start automatically when you connect the camera to the computer by adjusting the following settings.

Mac OS X v10.2

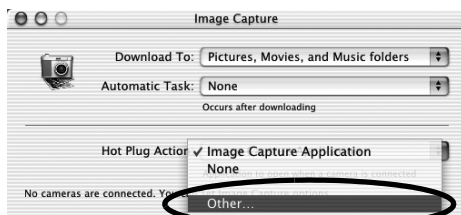
1. Start Image Capture, click the [Image Capture] menu and select [Preferences].
2. Select [Other] from the Camera Preferences list box.



3. Select [ImageBrowser] in the program selection window.
 4. Close Image Capture.
- ImageBrowser will start automatically from the next connection onward.

Mac OS X v10.1

1. Start Image Capture and select [Other] from the Hot Plug Action list box.



2. Select [ImageBrowser] in the program selection window.
 3. Close Image Capture.
- ImageBrowser will start automatically from the next connection onward.

Mac OS 9

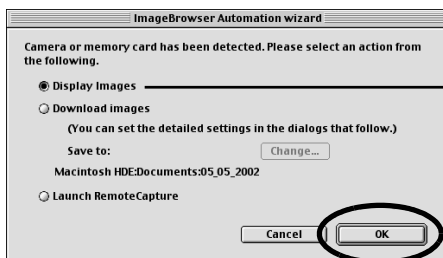
- 1 Attach the supplied USB cable to the computer's USB port and the camera's Digital Terminal. Prepare the camera for communication with the computer.



Procedures for attaching the camera to the computer and placing it in the correct mode for connecting vary between camera models. See *Information about Your Camera* (p. 91) for details.

ImageBrowser will start and open the ImageBrowser Automation Wizard dialog.

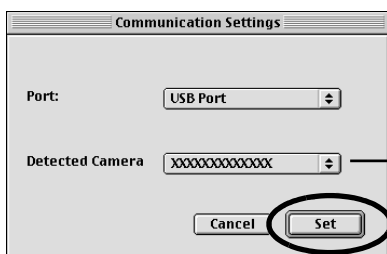
2 Confirm that [Display Images] is selected and click the [OK] button.



Confirm that this option is selected.

The Communication Settings dialog will display. This dialog only appears the first time the camera is connected.

3 Confirm that [USB port] is selected as the port option and that your camera model name or [Canon Camera] are selected as the detected camera. Click [Set].



Your camera model name or [Canon Camera] will appear here.

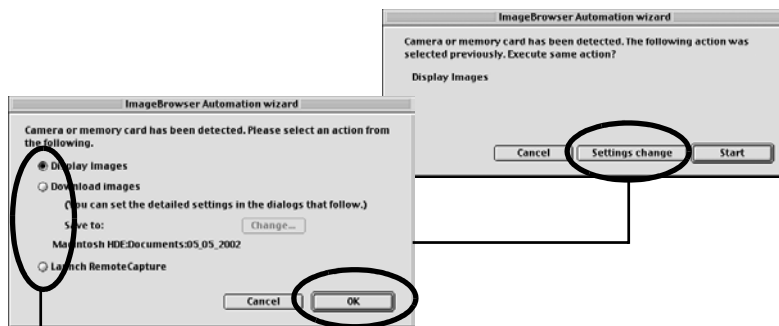
The Camera Window will open and display the camera images as thumbnails (tiny versions).



In the ImageBrowser Automation Wizard dialog, you can select the action that is carried out after ImageBrowser starts.



What to Do the Next Time ImageBrowser is Started

A dialog with the previously selected automated settings will display the next time you start ImageBrowser. To use these settings unchanged, click the [Start] button. To do nothing, click [Cancel]. To change the settings, click [Settings change].



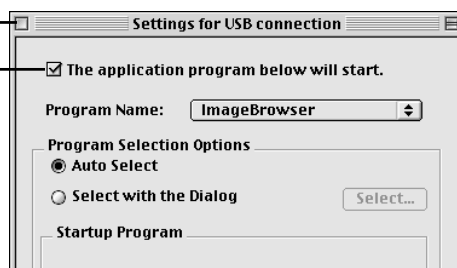
To change the settings, click [Settings Change] and select the desired action in the ImageBrowser Automation Wizard dialog.

How to Set ImageBrowser to Not Start Automatically

1. Click the Apple menu  and select [Control Panels] and [Canon ImageBrowser Auto Launch].
The Settings for USB Connection dialog will display.
2. Click [The application program below will start] to clear the check mark.
3. Click the close box  at the upper left to close the window.

Click here to close the window.

Clear the check mark here to stop ImageBrowser from starting automatically.

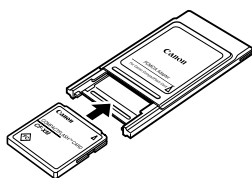


Next, download images to the computer (p. 65).

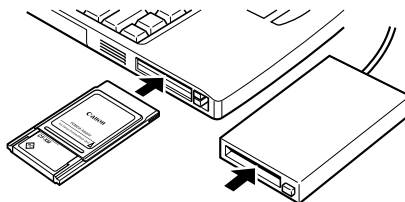
Memory Card Connection

1 Insert the memory card into the reader.

Use a separately sold card adapter (PCMCIA adapter) if required. See the manual for the memory card for its connection and handling instructions.



Place the memory card in an adapter if required.



Insert the loaded adapter into the slot.

2 Start ImageBrowser.

Double-click the [Canon ImageBrowser] icon on the desktop.



Canon ImageBrowser

Mac OS X

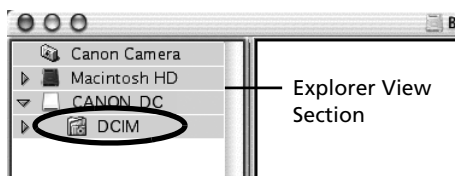


Canon ImageBrowser

Mac OS 9

If the icon does not appear on the desktop, double-click the folder in which you installed the program, followed by the [Canon Utilities] and [ImageBrowser] folders and the [ImageBrowser] file.

3 Double-click the [DCIM] folder in the Explorer View Section.



The images from the memory card will display as thumbnails in the Camera Window.



See *Memory Card Folder Structure* (p. 110) for information about memory card folder structures and file names.

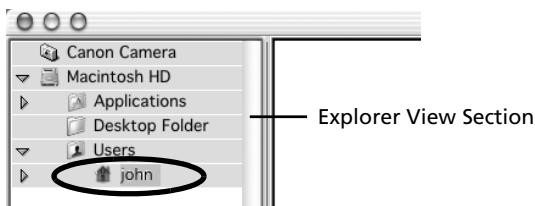
Next, download images to the computer (p. 65).

Downloading Images to the Computer

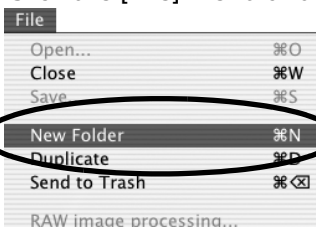
Creating a Folder to Receive Downloaded Images

Create a new folder for downloaded images with the following procedures.

- 1** Click the window labeled [Browser Window] and bring it to the foreground.
- 2** Select the [Users] folder and the subfolder labeled with your user name on the startup disk.
Mac OS 9 users should select [Macintosh HD] in the Explorer View section.

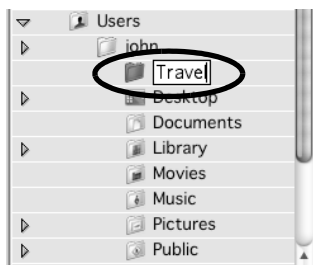


- 3** Click the [File] menu and select [New Folder].



This will create a folder labeled "Untitled."

- 4** Input a new name and press the [return] key.
This will replace the name with the one you type.



5 Select the newly created folder.



Downloading Images

Download images to the new folder.

- 1 Click the Camera Window to bring it to the forefront.
- 2 Click the images to download.

A blue frame appears around selected images.



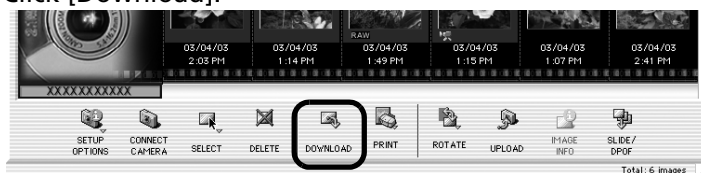
"RAW" displays on RAW images.

The movie icon displays on movie thumbnails.

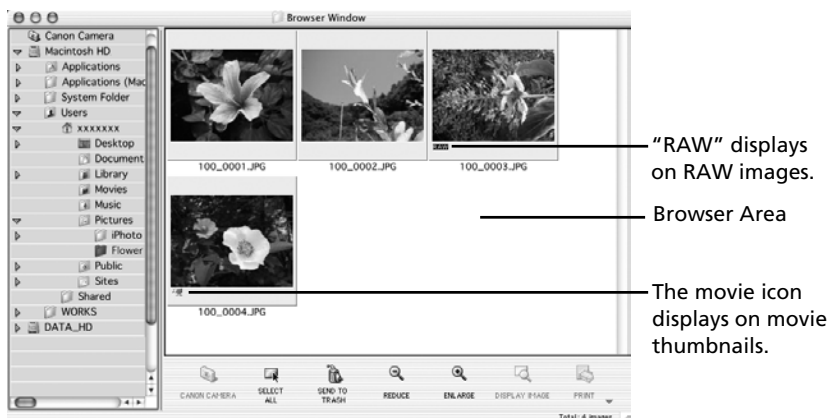



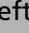
You can select multiple images by holding the [shift] key while clicking images.

3 Click [Download].



The downloaded images will copy to the computer and appear in the Browser Area.



- You can also download images to the computer by dragging them from the Camera Window and dropping them on the Browser Area or the Explorer View Section.
- To close the connection to the camera, click the close box  (Mac OS 9) or the red close box  (Mac OS X) at the top left of the Camera Window.
- Your camera uses a standard image transfer protocol called the Picture Transfer Protocol (PTP). With the PTP protocol and Mac OS X, you can easily download images by connecting the camera to the computer with a USB cable and using the software preinstalled on your operating system, such as iPhoto and Image Capture. (You do not even need to install ImageBrowser.) However, there are some inconveniences and limitations to this downloading method. See the *For Windows® XP and Mac OS X Users* leaflet for details.

Continue by printing out an image (p. 68).

Printing Images

Printing

- 1 Select the image(s) you wish to print.
A blue frame appears around selected images.



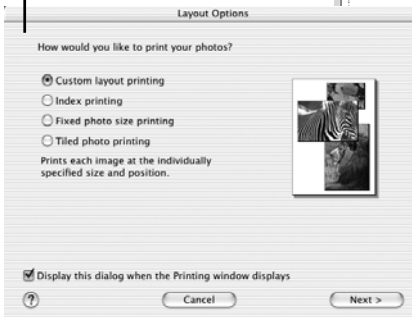
Movie images cannot be printed.

- 2 Click the [Print] button and select [Layout printing...] from the displayed menu.



This displays the Layout Options dialog and the Print window.

Layout Options dialog



Print window

- 3 Confirm that [Custom layout printing] is selected and click [Next].



- Selecting the [Custom layout printing] option allows you to freely specify the image size and position for printing.
- Selecting an alternative option allows you to print the images in an index or in a tiled arrangement. The [Canon perforated paper printing] option can be selected with Mac OS 9.

4 Select settings, such as the paper size, and click [OK].

This will close the Layout Options dialog and allow you to change the layout and print settings in the Print window.



The settings available in Step 4 will vary according to the type of layout selected in Step 3.

5 Adjust the page layout in the Print window if you wish.

See *Print Window Features* (p. 70) for information about changing layouts.

6 Click the [Print] button in the Print window.

This will display the Print dialog.

7 Click [OK] to start printing.

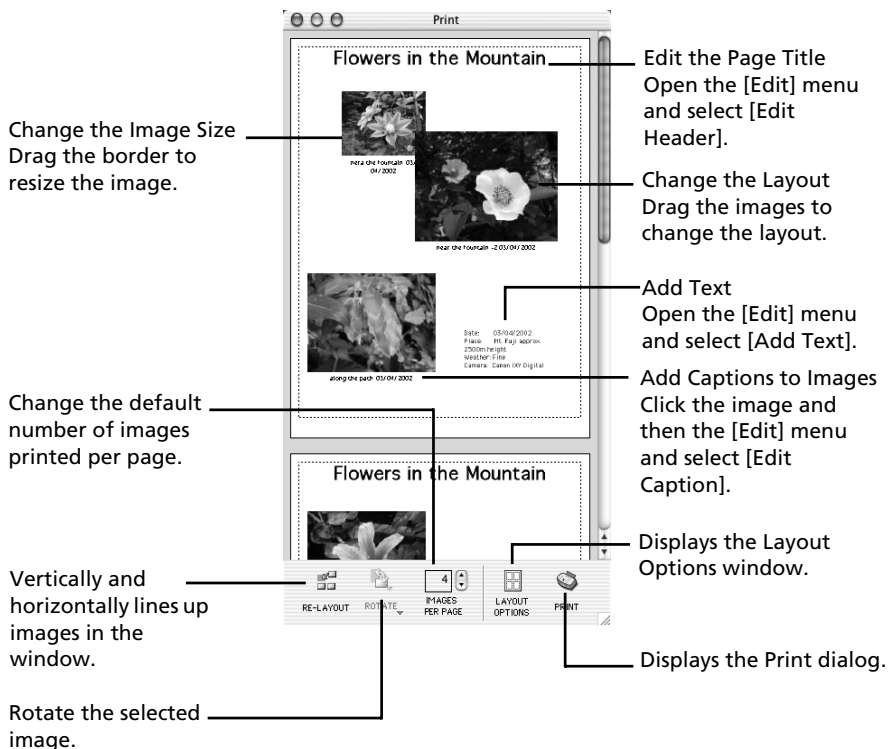


- You can start an index print by selecting [Index printing] in Step 2.
- Images shot with Exif 2.2-compliant cameras (Exif Prints) incorporate information about the shooting settings, such as the camera modes and settings. Better prints can be made by using this information to correct the image. You can set this function by clicking the [ImageBrowser] menu and selecting [Preferences] (in Mac OS 9, click the [Edit] menu to select [Preferences]), followed by [Print] in the list box and [Image Correction Settings].

This concludes the image printing process.

Print Window Features

When the [Custom layout printing] option is selected in the Layout Options window, you can freely change the size and position of the images for printing.



This chapter explained the ImageBrowser basics. Once you have mastered them, read the following chapter to try the advanced techniques. *Using the Software on the Macintosh Platform - Advanced Techniques* - (p. 71).



A PDF-format manual for ImageBrowser is also available. It provides further information about the program's features and procedures. See *Using the PDF Manuals* (p. 105).

Using the Software on the Macintosh Platform


- Advanced Techniques -

This chapter explains how to use various ImageBrowser features, such as how to play movies, create panoramic images and operate the camera shutter from the computer.

Proceed to this chapter once you have mastered the basic ImageBrowser procedures in the *Using the Software on the Macintosh Platform - The Basics* - chapter.

Replaying Movies

When you double-click an image with a movie icon in the ImageBrowser's Browser Area, QuickTime Player will start and replay the movie.

- 1** Double-click an image with a movie icon.
QuickTime Player will start.
- 2** Click the play button  in QuickTime Player.
The movie will replay.



Converting RAW Images - File Viewer Utility

Images can be recorded in the RAW format (RAW images) with certain camera models. RAW images are extremely high-quality images that are not degraded by compression algorithms when recorded. However, they are not supported by most image editing programs in their native format, so they must be converted before use.

Use the File Viewer Utility to convert RAW images.



- See *Information about Your Camera* (p. 91) to see if your camera supports the RAW format.
- See your *Camera User Guide* for the settings required to shoot RAW images.

Converting RAW Format Images

- 1** Select a RAW image in ImageBrowser's Browser Area.
- 2** From the [File] menu, Select [RAW image Processing].
This will start File Viewer Utility and display the selected RAW image.
- 3** Adjust the image quality as required.
See *Image Adjustment features* (p. 75) for instructions.
- 4** Click the [File] menu and select [Save File] and [Convert and save in file].
This will display the Save File dialog.
- 5** Select a file destination and format for the image you wish to convert.
You can save the image in the JPEG or TIFF format.
- 6** Click [OK].
The utility will start to convert the image and save it to the computer.

File Viewer Utility Features

Preferences Button

Use this button to select image transfer applications. You can also use it to adjust RAW image processing settings.

Save Button

Converts and saves the image.

Image Selection Button

Selects the method for selecting images.

Buttons for selecting images.

Version Information Button

Displays the program version information.

Displays a histogram (distribution of brightness data) for the image.

Displays the image information here.

Display Mode List Box
Selects the thumbnail or preview display mode.

Comment Box
A description of up to 60 characters can be input here.

Display Size List Box
Selects the size at which images display.

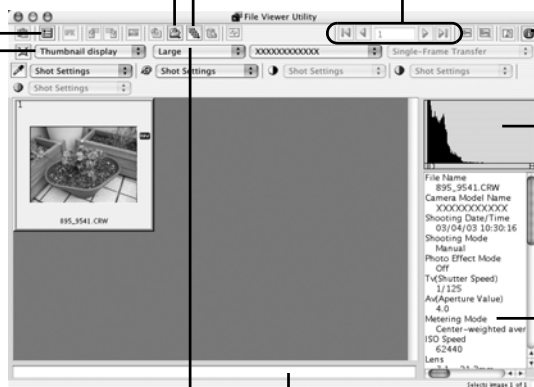
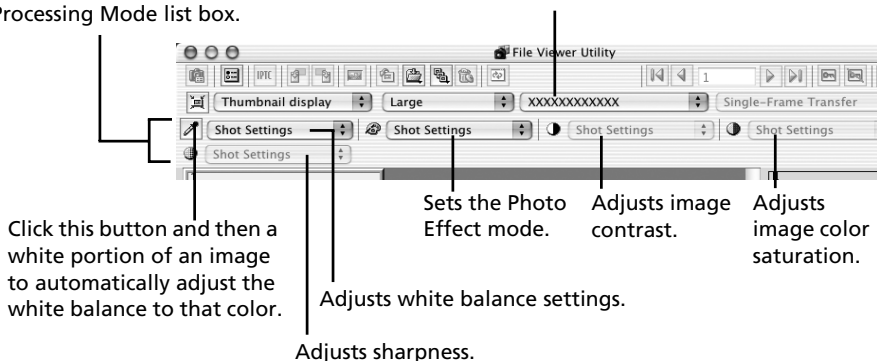


Image Adjustment Features

The following items will display when you select a RAW image and a camera model name in the Model-Specific Processing Mode list box. You adjust the image quality with them.

This section displays when a camera model name is selected in the Model-Specific Processing Mode list box.

Model-Specific Processing Mode List Box
Selects the model of camera in use.



To adjust image contrast, color saturation and sharpness, select [Custom Effect] for the Photo Effect mode setting.

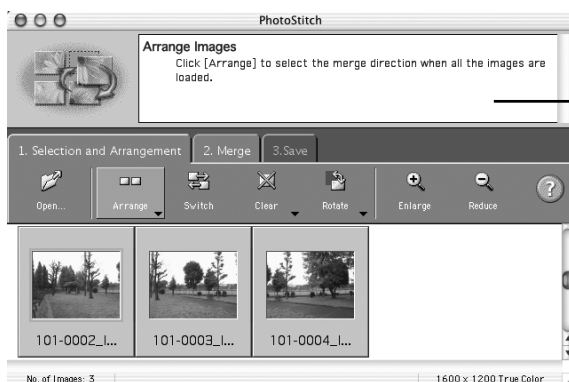
Merging Panoramic Images - PhotoStitch

You can create a wide panoramic image by merging several images, such as those shot in the camera's Stitch Assist mode. Use the PhotoStitch program to merge the images.

Starting PhotoStitch

Start PhotoStitch from ImageBrowser.

- 1** Select a series of images in the ImageBrowser's Browser Area.
- 2** Click the [Edit] menu and select [PhotoStitch].
A window similar to that below will appear.



Follow the instructions to merge the images.

- 3** Merge the images following the instructions in the guidance panel at the top of the PhotoStitch window.

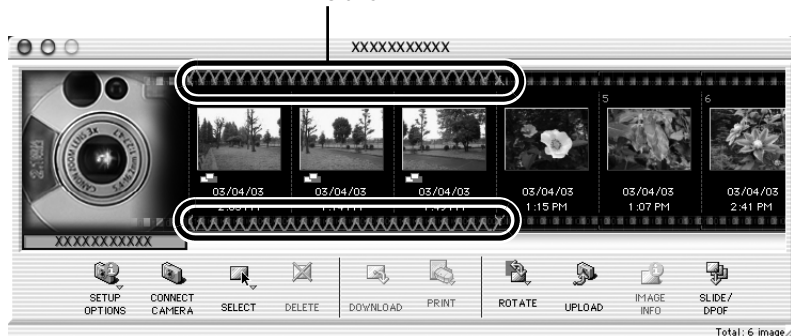


Images shot in Stitch Assist mode with a wide converter, teleconverter or close-up lens cannot be merged accurately.

Images Shot in Stitch Assist Mode

It is easy to merge images shot with the camera's Stitch Assist mode since PhotoStitch automatically arranges them in the correct order and orientation. Stitch Assist mode images appear in the Camera Window as shown below.

Images shot in Stitch Assist mode display a mark like this.



- You can also start PhotoStitch by clicking the mark shown on images shot in Stitch Assist mode.
- See the *Camera User Guide* for information about shooting in Stitch Assist mode.

Operating the Shutter Remotely - RemoteCapture

You can use a computer to control the shutter of a connected camera to record still images. This is particularly useful for checking images on the larger computer display as you record them.

Start the RemoteCapture program to perform this task.

Starting RemoteCapture

Start RemoteCapture from ImageBrowser.



Close the ImageBrowser Camera Window before starting RemoteCapture.

- 1** Attach the supplied USB cable to the computer's USB port and the camera's Digital terminal. Prepare the camera for communication with the computer.



Procedures for attaching the camera to the computer and placing it in the correct mode for connecting vary between camera models. See *Information about Your Camera* (p. 91) for details.

- 2** Close iPhoto or Image Capture if either program has started.
- 3** Open the lens cover or remove the lens cap on models equipped with them.


Proceed to Step 4 if your model does not have one.

- 4** Start ImageBrowser.
- 5** Click ImageBrowser's [Edit] menu and select [RemoteCapture].
- 6** Click [Connect] when the "Connect to camera?" prompt appears.

The Communication Settings window will display. This window only displays on the first connection.

- 7** Confirm that [USB port] is selected as the port option and that your camera model name or [Canon Camera] are selected as the detected camera. Click [Set].

iPhoto or Image Capture may automatically start up at the same time. Skip to Step 9 if neither program starts up.

- 8 Click the  icon at the top left of the iPhoto or Image Capture window to close the program.
- 9 Confirm that the Shooting-RemoteCapture window is displayed.

RemoteCapture Features

RemoteCapture has two windows: the Shooting-RemoteCapture window and the Save-RemoteCapture window. Use these windows to record and save images, respectively.

Shooting-RemoteCapture Window

Detail Settings

The Detail Settings dialog opens when you click the arrow symbol on the left.

Recordable Image Counter

Displays the number of images that will fit onto the computer or memory card in the camera.

Viewfinder Display
Click the [Viewfinder On] button while a connection to the camera is open to display the image appearing in the camera's viewfinder.

Viewfinder On/Off Button

Turns the viewfinder display on or off.



Release Button
Releases the shutter.

Set the basic camera settings here.

Slide this to zoom the camera in or out.

Reflect Changes Button
Updates the settings.



RemoteCapture locks the exposure and focus settings for the subject matter in the Viewfinder section. If the lighting or distance to the subject changes, click [Reflect changes] to reset these settings.



The following limitations apply when the Viewfinder image is displayed with a DIGITAL ELPH/DIGITAL IXUS series camera.

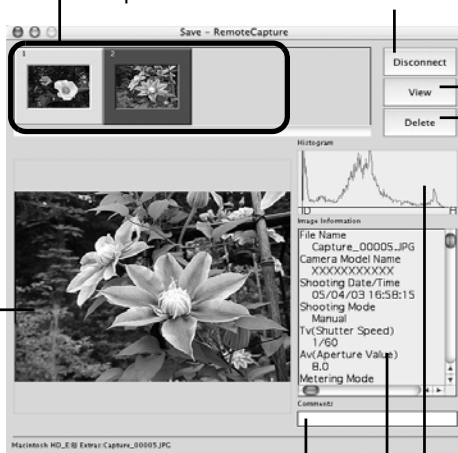
- The Viewfinder will automatically turn off after you shoot or after 1 minute passes after it is turned on. Click [Viewfinder On] again to turn it back on. However, you may have to wait a moment for it to come back on if the camera body temperature has risen.
- The camera's LCD monitor does not display while the Viewfinder is on. In addition, the Video OUT settings cannot be set with RemoteCapture.

Save-RemoteCapture Window

Thumbnail View
Displays thumbnails of all the images shot after RemoteCapture is started.

Connect/Disconnect Button

Click here to open a connection to the camera and display the Shooting-RemoteCapture window. It will change to the Disconnect button while a connection is open. Click it to close the connection.



View Button
Displays images selected in the Thumbnail View area at a larger size.

Delete Button
Deletes images selected in the Thumbnail View area (completely from the computer).

Image Display Area
Displays the image selected in the Thumbnail View.

Comments
Add a comment about the image here.

Histogram
Check the distribution of brightness data here.

Image Information
Check the image settings here.

Shooting with RemoteCapture



If your computer is set to go into sleep mode, there is no guarantee that RemoteCapture will continue to function after the computer enters sleep mode. Always turn off the sleep function before you start shooting with RemoteCapture.

1 Click the arrow to the left of [Detail Setting].

The full-view Shooting-RemoteCapture window will display.

2 Click [Viewfinder On] and view the image in the Shooting-RemoteCapture window.

Change the settings if required. To update any changes made in the Detail settings window, click the [Reflect changes] button.

3 Set the Size/Quality and Rotation settings in the Shooting-RemoteCapture window.

You can save images of people and other subjects that are shot in portrait orientation (camera held 90° on end) to the computer in the correct viewing orientation by setting the [Rotation] category to [90 degrees left] or [90 degrees right].



- The rotation settings in RemoteCapture cannot be used if your camera is equipped with the Auto Rotate function and it is set to On.
- To change the destination of the saved image, see *Changing the File Destination and Method of Saving* (p. 83).

4 Click the [Release] button.

Images shot with RemoteCapture are automatically saved to the folder selected in ImageBrowser.



- You can also release the shutter by pressing the camera's shutter button or the keyboard's space key.
- The zoom controls and other camera buttons and switches, except for the shutter button, cannot be operated while RemoteCapture is controlling the camera.
- You may notice that the interval between the shutter release and activation is slightly longer when RemoteCapture is used to shoot than when the camera is used in the normal fashion.

Interval Timer Shooting

Interval timer shooting is a method of shooting that records a specified number of frames at set intervals.

- 1** In the **Save-RemoteCapture** window or **Shooting-RemoteCapture** window, click the **[File]** menu and select **[Interval Timer Shooting]**. This will display the Interval Timer Shooting window.
- 2** Set the number of frames and the interval value and click **[Start]**. This will record the specified number of frames at the specified interval.



- You can set the time interval between 5 seconds to 60 minutes.
- You can capture up to the number of recordable frames displayed in the Shooting-RemoteCapture window (the actual limit is 9999 frames when the displayed number is 10,000 or higher).



Please note that the camera will not be able to shoot at the specified interval if it is shorter than the time required to transmit the data and save it to the computer.

Timer Shooting

Timer shooting is a method of shooting that records a frame after a specified number of seconds.

- 1** In the **Save-RemoteCapture** window or **Shooting-RemoteCapture** window, click the **[File]** menu and select **[Timer Shooting]**. The Timer Shooting window will display.
- 2** Set the timer interval and click **[Start]**. This will record an image after the specified time has elapsed.



- You can specify a timer interval from 2 to 30 seconds.

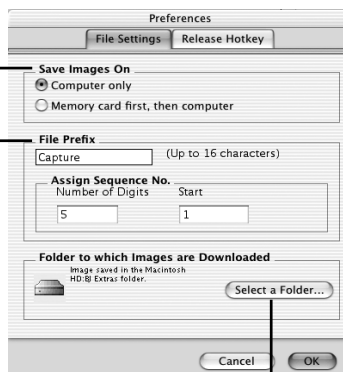
Other Preferences

Changing the File Destination and Method of Saving

- 1 Click the [RemoteCapture] menu (Mac OS X) or the [File] menu (Mac OS 9) and select [Preferences] in the Save-RemoteCapture or Shooting-RemoteCapture window.
This will display the Preferences dialog.
- 2 Select the way images are saved and the folder to which they are saved and click [OK].

Sets whether images are saved only to the computer or to both the computer and the memory card in the camera.

Input a root name for the image files here. If you input "Capture", for example, the first image will be named [Capture_00001.jpg] and successive images will automatically be assigned a name that is one number higher than the last.



Select a folder where images will be saved.



Selecting [Computer only] in the "Save Images On" category allows you to shoot when there is no memory card in the camera or when the camera's memory card is full.

Displaying the Subject in the Camera's LCD Monitor

You can view the subject you are shooting in the camera's LCD monitor.

- 1 In the Shooting-RemoteCapture window, click the [File] menu and select [Camera Display Settings].
The Camera Display Settings dialog will display.
- 2 Select [Camera's LCD monitor] and click [OK].
- 3 In the Shooting-RemoteCapture window, click the [Viewfinder On] button.



You can display the subject on a TV connected to the camera by selecting [Video Out terminal] in Step 2. See the *Camera User Guide* for instructions to connect the camera to a TV.

Printing an Index of the Thumbnail Images

You can print an index of all the thumbnails displayed in the Thumbnail View area of the Save-RemoteCapture window by clicking the [File] menu and selecting [Print Index]. This provides a convenient register and means of checking your images since the file name and shooting date are also printed with each image.

Enjoy Customizing Your Camera with the My Camera Settings

The start-up image, start-up sound, shutter sound, operation sound, and self-timer sound are called the My Camera Settings. You can add your favorite images and sounds from your computer to the My Camera Settings in the camera. This topic explains how to upload the My Camera Settings saved onto your computer to the camera. Use ImageBrowser to perform this function.

Displaying the My Camera Window

To save the My Camera Settings to the camera, you use the My Camera window. The following explains the procedures for displaying the My Camera window.

- 1 The Camera Window will open after you have connected the camera to the computer and started ImageBrowser.

For starting instructions for ImageBrowser, see *Starting ImageBrowser* (p. 58).

- 2 Click [Setup Options] in the Camera Window and select [My Camera] in the pop-up menu.



The Select My Camera dialog will display.

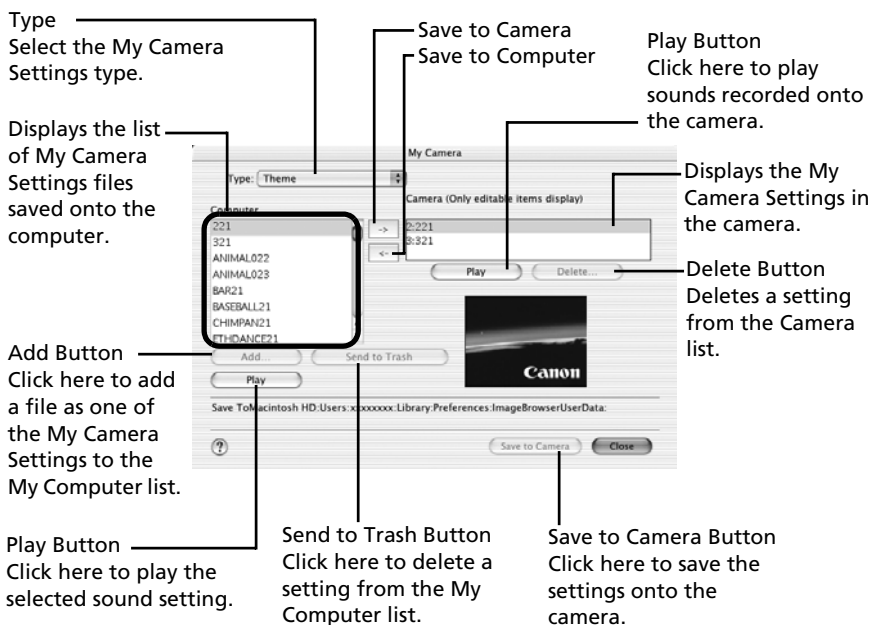
- 3** Select [Start-up Image, Start-up Sound, Operation Sound, Selftimer Sound and Shutter Sound] and click [OK].

This will display the My Camera window.



ImageBrowser already contains several pre-recorded My Camera Settings items. You can check these items with the My Camera window.

The My Camera Window



You can add new files as My Camera Settings to the My Camera window. See *Adding New Data to the My Camera Window* (p. 88).

Saving the My Camera Settings to the Camera


You can save the My Camera Settings displayed in the My Camera window to the camera.



- My Camera Settings can be selected and saved in either of two ways to the camera: individually or in theme sets.
- The “Animal” theme, for example, features an animal in the start-up image and animals calls in each of the sound files. The names of the prepared files for the various My Camera Settings themes all begin with the same root name, such as “Animal~”. For example, the start-up image that starts with “Animal~” shows an animal picture while the similarly named sound files feature animal sounds.



- Settings that do not appear in the My Computer list of the My Camera window cannot be saved to the camera.
- Do not detach the USB cable, turn the camera power off or disconnect the camera from the computer while the My Camera Settings are being saved to the camera or the settings from the camera are being saved to the computer.

- 1** Confirm that the type of setting you wish to save to the camera is selected in the Type list box.
- 2** Select the setting from the Computer list that you would like to add. If you selected [Theme] in the Type category, the thumbnail (tiny version) of the start-up image will display to the right and the sound files will play in the order of start-up sound, shutter sound, operation sound and self-timer sound.
- 3** Select the setting in the Camera list that you would like to change and click the  button. The Camera list setting will change to the selected file. If a setting for this category has previously been saved to the camera, it will be overwritten. Repeat steps 1-3 as required.
- 4** Click the [Save to Camera] button. This concludes the process of saving the My Camera Settings to the camera. To use this data on the camera, change the start-up image and sound settings on the camera itself. Please see the *Camera User Guide* for these instructions.

Saving the Camera's My Camera Settings to the Computer


The My Camera Settings on the camera can be saved to the computer.



My Camera Settings can be selected and saved in either of two ways to the computer: individually or in theme sets.

- 1** Select the type of setting you wish to save to the computer from the Type list box.
- 2** Select the setting in the Camera list that you wish to save to the computer.

If you selected Theme in the Type category, the thumbnail (tiny version) of the start-up image will display to the right and the sound files will play in the order of start-up sound, shutter sound, operation sound and self-timer sound.

- 3** Click the  button.
- 4** Input a file name to the selected setting and click the [OK] button.
This concludes the process of saving the My Camera Settings to the computer.

Adding New Data to the My Camera Window

To add new data to the My Camera window, you need to create the new data, save it to the computer and add that file to the My Camera window.

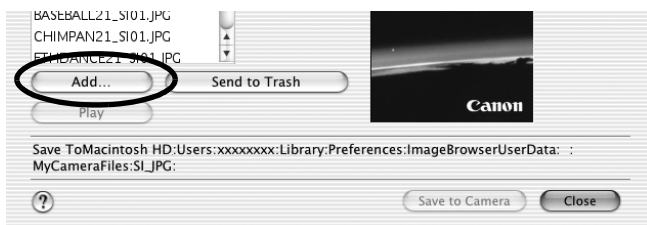
Create an Original Start-up Image File and then Add It

Start by creating the image file that will become the start-up image and save it to the computer. Use an image editing program, such as ArcSoft PhotoStudio. Create the file in the JPEG format at a size of (w) 320 x (h) 240 pixels. Once you have created the data and saved it to the computer, use the following procedures to add it to the My Camera window.

- 1** Open the My Camera window, select the type of setting you wish to add from the Type list box.

2 Click the [Add] button.

This will display the file opening dialog.



3 Select the file you created and click [Open].

The selected file will appear in the Computer list.

This concludes the process for adding new data.

You can save the newly created data to the camera using the procedures described in the *Saving the My Camera Settings to the Camera* section (p. 87).



To delete a setting, select the file name and click the [Send to Trash] button at the bottom of the My Computer list.

Add an Original Sound File

Use a program such as ArcSoft VideoImpression to change the file format to the WAV format after you have copied the sound file. Then proceed with the steps on the previous page.



- With Mac OS 9, you can use the standard-issue SimpleSound program to record a sound file.
- Record the sound as an 11.025 kHz or 8.000 kHz, 8 bit, mono sound in the WAV format. The following chart shows standard time lengths for My Camera Sounds.

Type	Duration in Seconds	
	11.025 kHz	8.000 kHz
Start-Up Sound	1.0 sec. or less	1.3 sec. or less
Shutter Sound	0.3 sec. or less	0.4 sec. or less
Operation Sound	0.3 sec. or less	0.4 sec. or less
Self-Timer Sound	2.0 sec. or less	2.0 sec. or less

MEMO

Information about Your Camera

The software package and the procedures for connecting to a computer and preparing for data transfers vary between camera models. Certain software functions may also not be supported by some camera models.

Read this section to confirm the capabilities of your camera model.

Information Common to All Models

See the respective page for your camera model for information specific to that model (pp. 94 - 100).

Programs and Compatible Operating Systems

The CD-ROM labeled “Canon Digital Camera Solution Disk” is provided with all models. It contains the following programs.

Program	Compatible Operating System					
	Windows				Macintosh	
	98	Me	2000	XP	OS 9	OS X
ZoomBrowser EX	●				—	
ImageBrowser	—				●	
TWAIN Driver	●	—	●	—	—	
WIA Driver	—	●	—	—	—	
File Viewer Utility	●				●	
PhotoRecord	●				—	
PhotoStitch	●				●	
RemoteCapture	●				●	

Connecting the Camera to a Computer



Ensure that you have installed the software from the supplied Canon Digital Camera Solution Disk before you connect the camera to the computer.

- Your camera and computer
- USB cable supplied with the camera



- Use the USB cable to attach the camera directly to a USB port on the computer, not through a USB hub. The connection may not operate correctly through a USB hub.
- The connection may not operate correctly if you are using other USB devices, excluding USB mice or keyboards, at the same time as the camera. If this occurs, disconnect the other devices from the computer and try reconnecting the camera.
- Do not connect two or more cameras at the same time to the same computer via the USB interface. The connections may not operate correctly.
- Never allow the computer to go into standby (sleep) mode while a camera is connected via the USB interface. If it does happen, never disconnect the USB cable. Try to awaken the computer with the camera in the connected state. Some computers will not awaken properly if you disconnect the camera while they are in standby (sleep) mode. Please refer to your computer manual for instructions regarding the standby (sleep) mode.



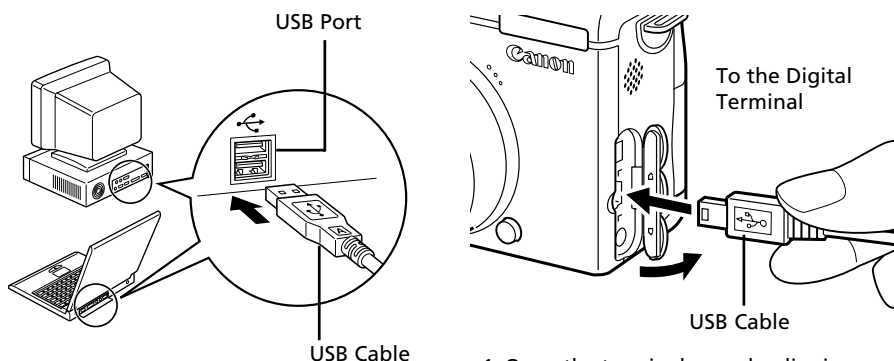
You are recommended to power the camera from a household power source (AC adapter) when connecting to a computer.

See the page (pp. 94 - 100) for your specific model for information about connecting the camera to the computer.

PowerShot G5

How to Connect the Camera to a Computer and Prepare to Transfer Data

- 1 Attach the supplied USB cable to the computer's USB port and the camera's Digital terminal as shown below.



1. Open the terminal cover by slipping a fingernail in the groove and lifting.
2. Insert it all the way until it clicks.

The camera and computer will automatically be ready to transfer data when a connection is established.

CD-ROMs in the Package

- Canon Digital Camera Solution Disk
- ArcSoft Camera Suite 2.0

See *ArcSoft Camera Suite 2.0 CD-ROM* (p. 102) for information about the features and installation procedures for the programs on the disk.

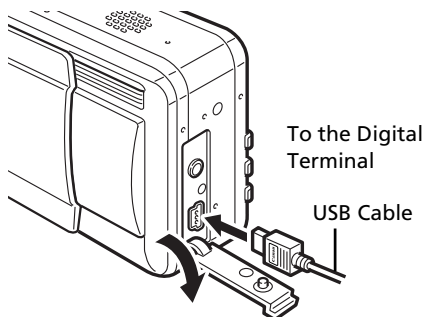
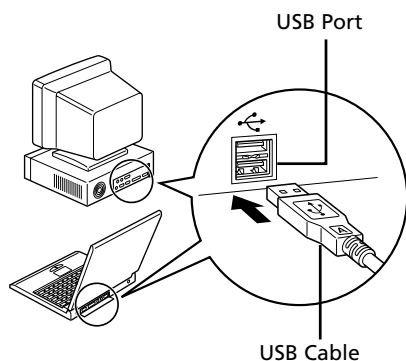
Non-Supported Programs and Features

All programs and features are supported.

PowerShot S50

How to Connect the Camera to a Computer and Prepare to Transfer Data

- 1 Attach the supplied USB cable to the computer's USB port and the camera's Digital terminal as shown below.



1. Slip a fingernail under the terminal cover and lift to open.
2. Insert it all the way until it clicks.

The camera and computer will automatically be ready to transfer data when a connection is established.

CD-ROMs in the Package

- Canon Digital Camera Solution Disk
- ArcSoft Camera Suite 2.0

See *ArcSoft Camera Suite 2.0 CD-ROM* (p. 102) for information about the features and installation procedures for the programs on the disk.

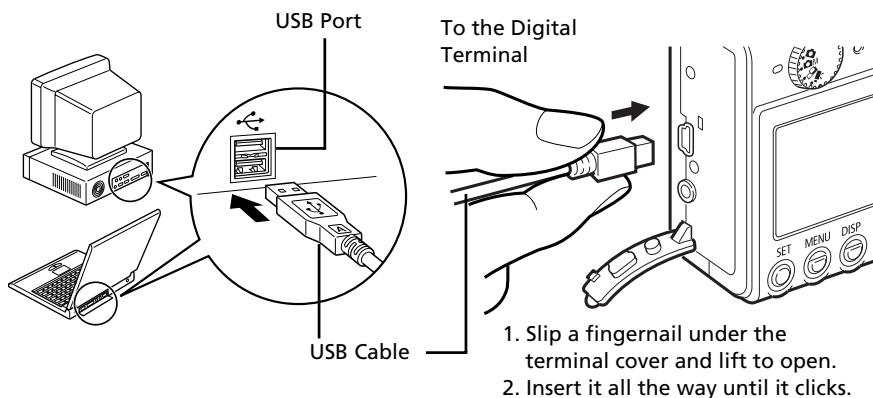
Non-Supported Programs and Features

All programs and features are supported.

PowerShot S400 DIGITAL ELPH/DIGITAL IXUS 400

How to Connect the Camera to a Computer and Prepare to Transfer Data

- 1 Attach the supplied USB cable to the computer's USB port and the camera's Digital terminal as shown below.



- 2 Set the mode switch to the replay mode and turn the camera's power on. This will prepare the camera to exchange data with the computer.

CD-ROMs in the Package

- Canon Digital Camera Solution Disk
- ArcSoft Camera Suite 1.2

See *ArcSoft Camera Suite 1.2 CD-ROM* (p. 104) for information about the features and installation procedures for the programs on the disk.

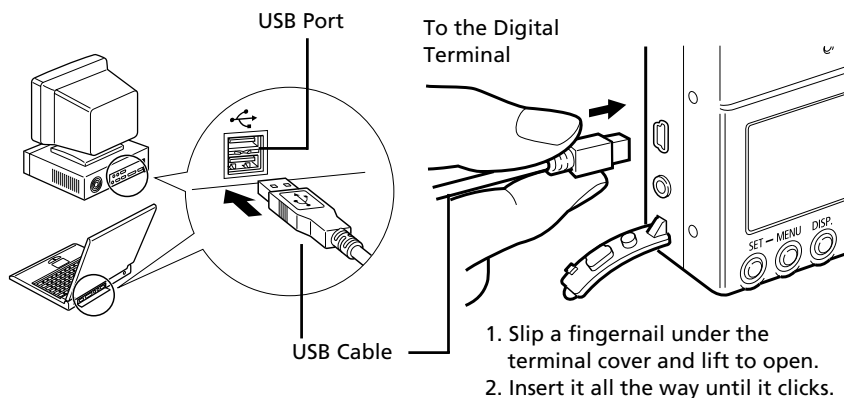
Non-Supported Programs and Features


- RAW images cannot be recorded.
- The camera's LCD monitor will not display images and the Video OUT settings cannot be set while the Viewfinder function is on in the Shooting-RemoteCapture window of RemoteCapture.

PowerShot SD100 DIGITAL ELPH/DIGITAL IXUS II

How to Connect the Camera to a Computer and Prepare to Transfer Data

- 1 Attach the supplied USB cable to the computer's USB port and the camera's Digital terminal as shown below.



- 2 Set the mode switch to  and press the ON/OFF button until the power lamp lights green.

CD-ROMs in the Package

- Canon Digital Camera Solution Disk
- ArcSoft Camera Suite 1.2

See *ArcSoft Camera Suite 1.2 CD-ROM* (p. 104) for information about the features and installation procedures for the programs on the disk.

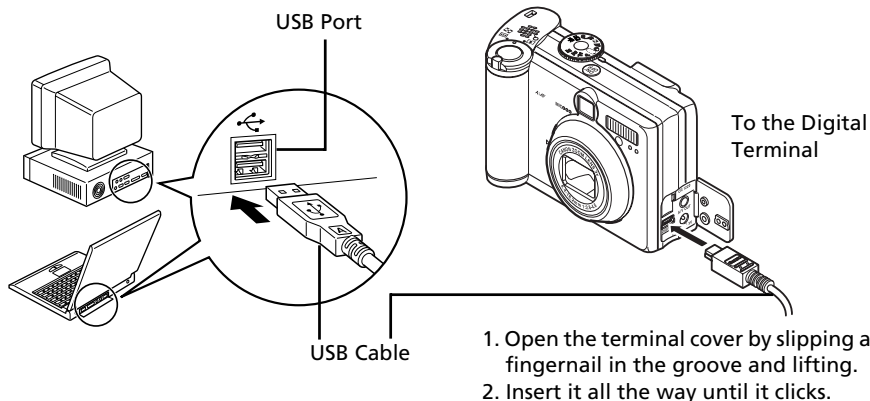
Non-Supported Programs and Features

- RAW images cannot be recorded.
- The camera's LCD monitor will not display images and the Video OUT settings cannot be set while the Viewfinder function is on in the Shooting-RemoteCapture window of RemoteCapture.

PowerShot A70

How to Connect the Camera to a Computer and Prepare to Transfer Data

- 1 Attach the supplied USB cable to the computer's USB port and the camera's Digital terminal as shown below.



- 2 Set the mode switch to the replay mode and turn the camera's power on. This will prepare the camera to exchange data with the computer.

CD-ROMs in the Package

- Canon Digital Camera Solution Disk
- ArcSoft Camera Suite 1.2

See *ArcSoft Camera Suite 1.2 CD-ROM* (p. 104) for information about the features and installation procedures for the programs on the disk.

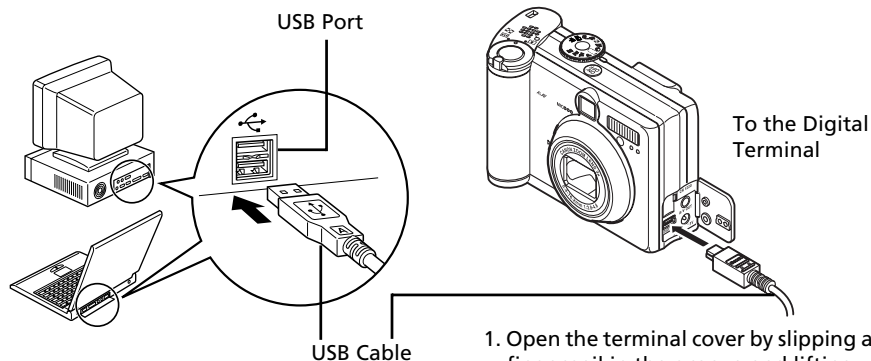
Non-Supported Programs and Features

RAW images cannot be recorded.

PowerShot A60

How to Connect the Camera to a Computer and Prepare to Transfer Data

- 1 Attach the supplied USB cable to the computer's USB port and the camera's Digital terminal as shown below.



- 2 Set the mode switch to the replay mode and turn the camera's power on. This will prepare the camera to exchange data with the computer.

CD-ROMs in the Package

- Canon Digital Camera Solution Disk
- ArcSoft Camera Suite 1.2

See *ArcSoft Camera Suite 1.2 CD-ROM* (p. 104) for information about the features and installation procedures for the programs on the disk.

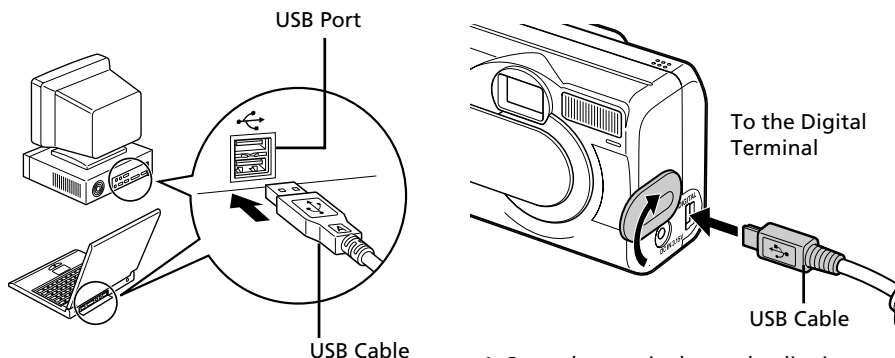
Non-Supported Programs and Features

RAW images cannot be recorded.


PowerShot A300

How to Connect the Camera to a Computer and Prepare to Transfer Data

- 1 Attach the supplied USB cable to the computer's USB port and the camera's Digital terminal as shown below.



1. Open the terminal cover by slipping a fingernail in the groove and lifting.
2. Insert it all the way until it clicks.

- 2 Press the  (On) button. This will prepare the camera to exchange data with the computer.

CD-ROMs in the Package

- Canon Digital Camera Solution Disk
- ArcSoft Camera Suite 1.2

See *ArcSoft Camera Suite 1.2 CD-ROM* (p. 104) for information about the features and installation procedures for the programs on the disk.

Non-Supported Programs and Features

- RAW images cannot be recorded.
- The camera's LCD monitor will not display images and the Video OUT settings cannot be set while the Viewfinder function is on in the Shooting-RemoteCapture window of RemoteCapture.


Appendices

This chapter introduces the CD-ROMs included in your package and the procedures for installing the programs. It also explains how to uninstall the programs.

Read the *Troubleshooting* section in this chapter if you experience a problem using the programs.

About the CD-ROMs in Your Package

CD-ROMs containing image editing programs are included in your camera package along with the Canon Digital Camera Solution Disk. This topic explains the program features and installation procedures for each CD-ROM.



The CD-ROMs supplied with the cameras differ by model. See *Information about Your Camera* for details (p. 91).

ArcSoft Camera Suite 2.0 CD-ROM

This CD-ROM contains the following programs.

Program	Compatible Operating System					
	Windows				Macintosh	
	98	Me	2000	XP	OS 9	OS X
ArcSoft PhotoStudio			●			●
ArcSoft VideoImpression			●			●

The free hard disk space required to install ArcSoft Camera Suite 2.0 is 250 MB or more on a Windows system and 150 MB or more on a Macintosh system.

What Can Be Accomplished with ArcSoft Camera Suite 2.0

Special Effects and Image Editing for Various Purposes

•ArcSoft PhotoStudio

This program can be used to correct colors or brightness levels, apply special effects, and edit and print images. ArcSoft PhotoStudio is Arcsoft, Inc.'s high-performance, user-friendly image editing program.



Programs for Editing Stills and Movies

•ArcSoft VideoImpression

This program provides simple procedures for compiling a movie from multiple clips or stills and for editing out unwanted frames from movies.


Installing ArcSoft Camera Suite 2.0

Windows

- 1** Place the ArcSoft Camera Suite CD-ROM in the drive.
Follow the onscreen messages to install PhotoStudio and VideoImpression. If the message does not appear automatically, click the Windows [Start] menu, select [My Computer], and double-click the [ARCSOFT] and [Setup.exe] icons .
Windows 2000, Windows Me and Windows 98 users should double-click the [My Computer] icon on the desktop, followed by the [ARCSOFT] and [Setup.exe] icons .

Macintosh

•Installing ArcSoft PhotoStudio


- 1** Close all programs that are running.
- 2** Place the ArcSoft Camera Suite CD-ROM in the drive.
- 3** Open the CD-ROM window and double-click the [PhotoStudio 4], [English] and [PhotoStudio Installer] icons .

Installation will start.

Follow the onscreen messages to proceed with the installation.

- 4** Click [Finish] when the message stating that the installation is complete appears.
Continue by installing ArcSoft VideoImpression.

•Installing ArcSoft VideoImpression

- 1** In the CD-ROM window, double-click the [VideoImpression 1.6], [English] and [VideoImpression 1.6 Installer] icons .

Installation will start.

Follow the onscreen messages to proceed with the installation.

- 2** Restart the computer after the installation is complete.
This concludes the installation process for ArcSoft PhotoStudio and ArcSoft VideoImpression.

ArcSoft Camera Suite 1.2 CD-ROM

This CD-ROM contains the following programs.

Program	Compatible Operating System					
	Windows				Macintosh	
	98	Me	2000	XP	OS 9	OS X
ArcSoft PhotoImpression	●				●	
ArcSoft VideoImpression	●				●	

The free hard disk space required to install ArcSoft Camera Suite 1.2 is 475 MB or more on a Windows system and 375 MB or more on a Macintosh system.

What Can Be Accomplished with ArcSoft Camera Suite 1.2

Special Effects and Image Editing for Various Purposes

- ArcSoft PhotoImpression

This program can be used to apply special effects, and edit and print images in simple steps. It can also be used to create postcards and calendars.

Programs for Editing Stills and Movies

- ArcSoft VideoImpression


This program provides simple procedures for compiling a movie from multiple clips or stills and for editing out unwanted frames from movies.

Installing ArcSoft Camera Suite 1.2

Windows

- 1 Place the ArcSoft Camera Suite CD-ROM in the drive.


Follow the onscreen messages to install PhotoImpression and VideoImpression.

If the message does not appear automatically, click the Windows [Start] menu, select [My Computer], and double-click the [ARCSOFT] and [Setup.exe] icons .

Windows 2000, Windows Me and Windows 98 users should double-click the [My Computer] icon on the desktop, followed by the [ARCSOFT] and [Setup.exe] icons .

Macintosh

•Installing ArcSoft PhotoImpression


- 1** Close all programs that are running.
- 2** Place the ArcSoft Camera Suite CD-ROM in the drive.
- 3** Open the CD-ROM window and double-click the [PhotoImpression 4], [English] and [PhotoImpression Installer] icons .

Installation will start.

Follow the onscreen messages to proceed with the installation.

- 4** Click [Finish] when the message stating that the installation is complete appears.
Continue by installing ArcSoft VideoImpression.

•Installing ArcSoft VideoImpression

- 1** In the CD-ROM window, double-click the [VideoImpression 1.6], [English] and [VideoImpression 1.6 Installer] icons .

Installation will start.

Follow the onscreen messages to proceed with the installation.

- 2** Restart the computer after the installation is complete.
This concludes the installation process for ArcSoft PhotoImpression and ArcSoft VideoImpression.

Using the PDF Manuals

The following PDF-format manuals (hereafter PDF manuals) are provided to explain the features and procedures for using ZoomBrowser EX and ImageBrowser.

- ZoomBrowser EX Software User Guide (Windows)
- ImageBrowser Software User Guide (Macintosh)



Adobe Acrobat Reader must be installed to read the aforementioned PDF manuals.

Viewing PDF Manuals

Viewing Manuals Downloaded from a Website

These PDF-format manuals are available on the Canon website. Use your browser program to download these manuals from the following URL:

<http://www.canon.co.jp/Imaging/information-e.html/>

Uninstalling the Software

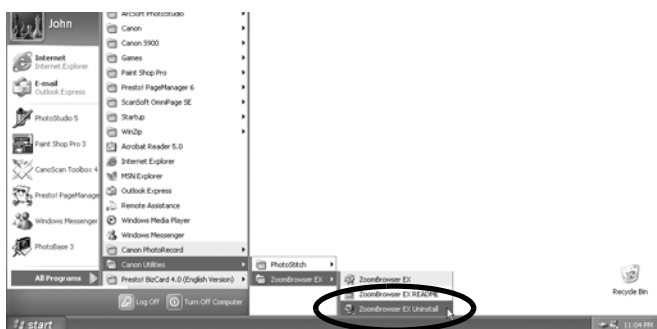
The procedures for uninstalling the software are only required when you wish to delete the programs from your computer or when reinstallation is required to fix corrupted files.

Uninstalling the Software (Windows)

Software Installed from the Canon Digital Camera Solution Disk

This explanation uses ZoomBrowser EX to demonstrate how to uninstall a program.

- 1 Click the Windows [Start] menu and select [Programs] or [All Programs], followed by [Canon Utilities], [ZoomBrowser EX] and [Uninstall ZoomBrowser EX].



The uninstall utility will start and remove ZoomBrowser EX.



- You can remove other programs with the same procedures.
- PhotoRecord can be uninstalled by clicking the Windows [Start] menu and selecting [Programs] or [All Programs], followed by [Canon PhotoRecord] and [Uninstall PhotoRecord].

Uninstalling the Other Supplied Programs

ArcSoft PhotoStudio, PhotoImpression and VideoImpression

Uninstall these programs by clicking the Windows [Start] menu and selecting [Programs] or [All Programs], followed by [ArcSoft Camera Suite] and [Uninstall].

Uninstalling the USB Driver (Windows)

Use the following procedures to uninstall the USB Driver.

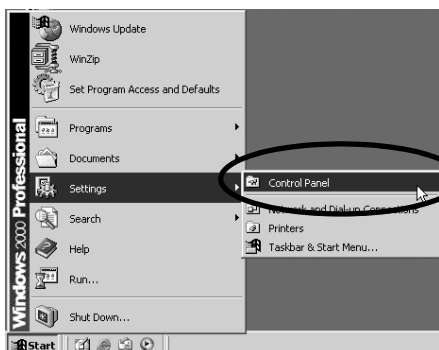


It is essential to note that you will not be able to download images if you uninstall the USB Driver.

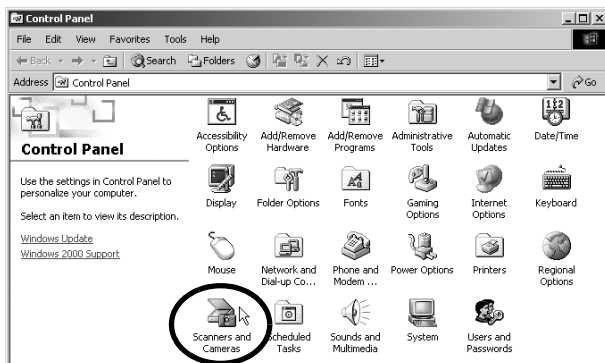


This procedure is not required with Windows XP.

- 1** Attach the supplied USB cable to the computer's USB port and the camera's Digital Terminal. Prepare the camera for communication with the computer.
For USB cable connection instructions, see *Information about Your Camera* (p. 91).
A dialog allowing you to select which application program to start will display.
- 2** Click the [Cancel] button.
If ZoomBrowser EX is started, close it.
- 3** Click the [Start] menu and select [Settings], followed by [Control Panel].

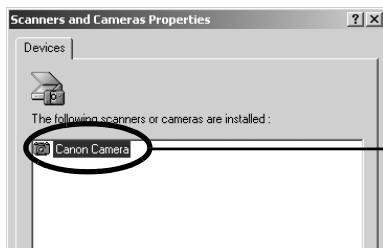


4 Double-click the [Scanners and Cameras] icon or folder.



5 Delete your camera model name or [Canon Camera] in the [Scanners and Cameras Properties] dialog.

Windows Me users should delete your camera model or [Canon Camera] in the [Scanners and Cameras] folder.



Your camera model name or [Canon Camera] will appear here.

Windows 2000/Windows 98

Select your camera model name or [Canon Camera] and click [Remove].

Windows Me

Select your camera model name or [Canon Camera], right-click the mouse and select [Delete].



If your camera model name does not appear here, see the *Camera not detected, Events dialog won't display or images will not download to the computer* (p. 112) of the *Troubleshooting* section.

6 Click the Windows [Start] menu and select [Programs] or [All Programs], followed by [Canon Utilities], [Camera TWAIN Driver x.x] and [Uninstall TWAIN Driver]. (A version number appears in place of the "x.x".)

- Windows 2000, Windows 98: Perform Step 6 with no substitutions.
- Windows Me: Substitute the following for the underlined portions of Step 6.
[Camera WIA Driver x.x], [Uninstall WIA Driver]

The uninstall process will start.

To connect the camera to the computer and download after this point, use the following procedures.

1. Reinstall the driver.
2. Connect the camera to the computer with the USB cable.

Uninstalling the Software (Macintosh)

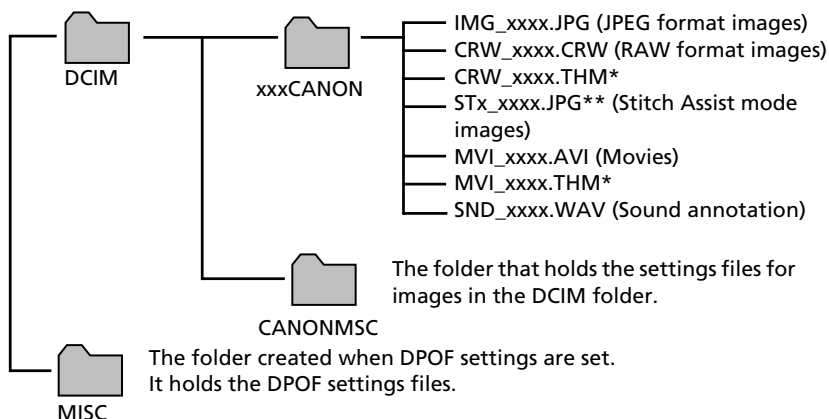
Uninstall the programs by dragging the application's folder (the folder in which it was installed) into the Trash, and then empty the Trash.



Please be careful not to accidentally delete any folders with downloaded images that may be contained within the application folder.

Memory Card Folder Structure

The images on a memory card are placed in the [DCIM] folder in subfolders labeled [xxxCANON], where the “xxx” represents a number in the range 100 - 998.



- *Files with the THM extension are the thumbnail image files for the camera's index replay mode.
- **Each successive file shot in Stitch Assist mode is assigned a letter starting from "A," which is inserted as the third digit in the name. i.e. [STA_0001.JPG], [STB_0002.JPG], [STC_0003.JPG] ...
- The "xxxx" in file names represent four-digit numbers.
- All folders except the "xxxCANON" folders contain image settings files. Do not open or delete them.

Troubleshooting

Please read this section if you encounter a problem using the software.

Start by Checking This

Investigate the following points first if you encounter a problem.



Does your computer meet the following requirements?

Computer systems that fail to meet the following requirements to accommodate a camera connected by a USB cable are not supported. Please acquire the necessary system.

- Built-in USB port on a system pre-installed with Windows XP, Windows 2000, Windows Me, or Windows 98 (First or Second Edition)
- System with a genuine Apple Computer built-in USB port



Is the camera correctly connected to the computer?

See *Information about Your Camera* (pp. 94 - 100) for the correct connection procedures. Also check to ensure that you are using the correct cable and that it is securely attached at both ends.



Is the camera set to the replay mode? (some models only)

Some models require the camera to be set to the replay mode to transfer data. See *Information about Your Camera* (pp. 94 - 100) for details.



Is the battery sufficiently charged?

Check the battery charge if you are powering the camera with a battery. You are recommended to use a household power source (AC adapter) to power the camera when it is connected to a computer.

Problems

Try the suggested solutions to the common problems listed below.



USB Driver installation not proceeding well (Windows)

Uninstall the driver (p. 107) before reinstalling it with the procedures in *Installing the Software and USB Driver* (p. 10).



Add New Hardware Wizard or New Hardware Found (Windows 2000) Wizard displays when the camera is connected to the computer with a USB cable.

Click [Cancel] to close the window. Temporarily disconnect the camera from the computer. Next, read *Start by Checking This* on the previous page and resolve the problem.



Camera not detected, Events dialog won't display or images will not download to the computer (when camera is connected to the computer via a USB cable)

Cause 1:

There is a problem with one of the items in the *Start by Checking This* section (p. 111).

Solution:

Resolve the problem.

Cause 2:

The USB Driver is not installed. (Windows only)

Solution:

Install it with the procedures in *Installing the Software and USB Driver* (p. 10).

Cause 3:

The USB Driver is not correctly installed. (Windows only)

Solution:

Uninstall the driver (p. 107) before reinstalling it with the procedures in *Installing the Software and USB Driver* (p. 10).

Cause 4:

The camera may have been recognized as another device under the following circumstances. (Windows only)

- The camera was connected to the computer before the USB Driver was installed.
- The [Scanners and Cameras] icon or the [Scanners and Cameras] folder cannot be found in the [Control Panel] or the [Printers and Other Hardware] window.
- Your camera model name, [Canon Camera] or a camera icon does not display in the [Scanners and Cameras Properties] dialog or the [Scanners and Cameras] folder.

Solution 1:

Start with the following procedures.

Install the USB Driver with the procedures in *Installing the Software and USB Driver* (p. 10). Then connect the camera to the computer with the USB cable and prepare it to transfer data (p. 14). If the USB Driver is already installed, uninstall it first and then reinstall it.

Solution 2:

If the problem is not resolved with the procedures in Solution 1, continue by implementing the following procedures. The specific steps are explained below.

1. Check to see if the camera is being recognized as an “other” device.
2. Delete the driver and the setup information files if it is being recognized as an “other” device.
3. Reinstall the driver.


This section explains the specific steps for each operating system.

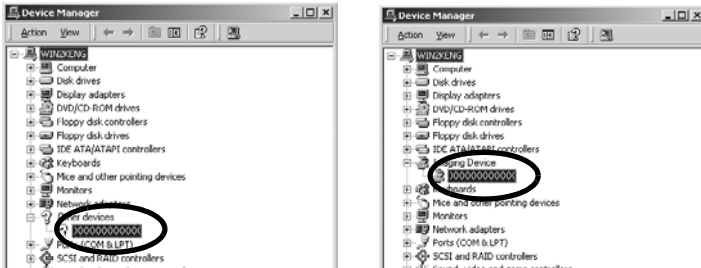
Windows XP and Windows 2000

Users of Windows XP Professional and Windows 2000 must first log in as an Administrator (computer system administrator) to delete a driver.

<Check to see if the camera is being recognized as an “other” device and delete the driver if it is.>

1. **Windows XP:** Click the [Start] menu, followed by [Control Panel], [Performance and Maintenance] and [System].
Windows 2000: Click the [Start] menu and select [Settings] and [Control Panel]. Double-click the [System] icon.
2. Click the [Hardware] tab, followed by [Device Manager].

- Click the  symbol beside the [Other devices] and/or [Imaging devices] category. Your camera model name or [Canon Camera] will display in these categories if it is being recognized as an “other” device.



There are other potential reasons for the problem if the “Other devices” or “Imaging devices” categories do not appear or your camera model name or [Canon Camera] does not appear. Proceed to Step 6, temporarily quit the procedures and investigate the other potential causes.

- Select your camera model name or [Canon Camera], right-click and select [Delete].
- Click [OK] in the confirmation dialog.
Delete all instances of your camera model name or [Canon Camera] if it appears in one or more places in the [Other devices] or [Imaging devices] categories.
- Close the [System Properties] window.



Step 7 and above are not required for Windows XP.

< Delete the setup information files>

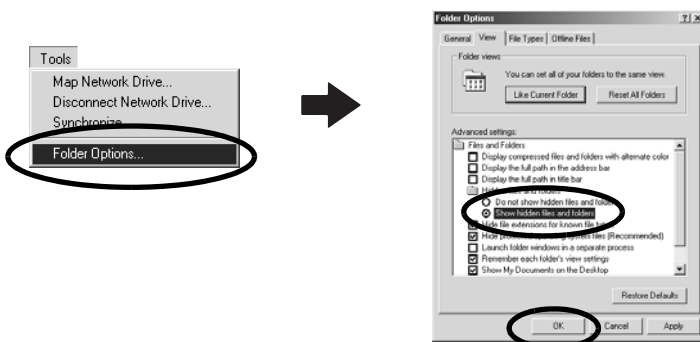
- Double-click the [My Computer] icon on the desktop, followed by the [C:] drive, [Winnt] folder and [Inf] folder.

If the [Inf] Folder Is Not Visible in the [Winnt] Folder

Use the following procedures to show all files and folders.

1. Open the [Winnt] folder.
2. Click the [Tools] menu and select [Folder Options].
3. Click the [View] tab.
4. In the [Files and Folders] category in the Advanced Settings section, set [Hidden files and folders] to [Show hidden files and folders]. Remove the check marks from [Hide file extensions for known file types] if it is present.
5. Click [OK] to close the dialog.

This will make the hidden files and folders visible.



8. Look for files for Canon digital cameras that start with [Oem*]. The "*" represents a number, such as 0 or 1. [Oem*] files come in pairs of [Oem*.inf] and [Oem*.pnf] files. (For example, [Oem0.inf] and [Oem0.pnf]).
9. Double-click the [Oem*] files to check their contents. Double-clicking an [Oem*] file will open it in the Windows Notepad program. Look for [;***Canon Camera Driver Setup File***] in the first line. Note down the names of these files.



Several sets of [Oem*] files may be present in the [Inf] folder. Open up each file to confirm that it is an [Oem*] file for Canon digital cameras before you do anything with the file.

10. Delete the [Oem*] file set. Delete the [Oem*.inf] and [Oem*.pnf] file for Canon digital cameras that you noted down in Step 9.




The Inf folder contains numerous files critical to the computer's operation. Be extremely careful to delete the correct files. If you delete the wrong files, you may be unable to restart Windows.

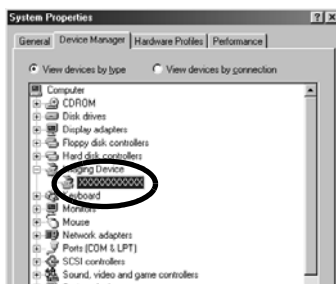
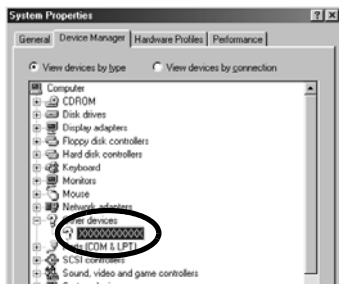
<Reinstall the driver.>

11. Reinstall the driver with the procedures in *Installing the Software and USB Driver* (p. 10).

Windows Me/Windows 98

<Check to see if the camera is being recognized as an "other" device and delete the driver if it is.>

1. Click the [Start] menu and select [Settings], followed by [Control Panel]. Double-click the [System] icon. This will display the System Properties window.
2. Click the [Device Manager] tab.
3. Click the  symbol beside the [Other devices] and/or [Imaging devices] category. Your camera model name or [Canon Camera] will display in these categories if it is being recognized as an "other" device.



There are other potential reasons for the problem if the "Other devices" or "Imaging devices" categories do not appear or your camera model name or [Canon Camera] does not appear. Proceed to Step 6, temporarily quit the procedures and investigate the other potential causes.

4. Select your camera model name or [Canon Camera] and click [Remove].
5. Click [OK] in the confirmation dialog.
Delete all instances of your camera model name or [Canon Camera] if it appears in one or more places in the [Other devices] or [Imaging devices] categories.

6. Click [OK] to close the System Properties window.

< Delete the setup information files.>

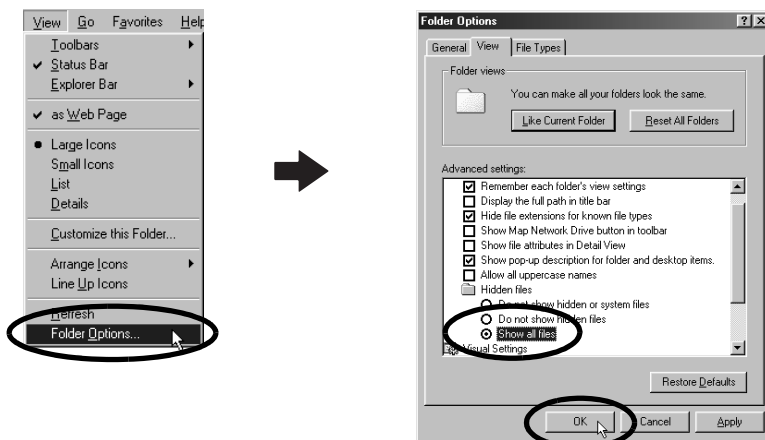
7. Double-click the [My Computer] icon on the desktop, followed by the [C:] drive, [Windows] folder and [Inf] folder.

If the [Inf] Folder Is Not Visible in the [Windows] Folder

Use the following procedures to show all files and folders.

1. Windows 98: Click the [View] menu and select [Folder Options].
Windows Me: Click the [Tools] menu and select [Folder Options].
2. Click the [View] tab.
3. Windows 98: Set the [Hide files] section to [Show all files].
Windows Me: Set the [Hidden files and folders] section to [Show hidden files and folders].
4. Click [OK] to close the dialog.

This will make the hidden files and folders visible.



8. Find and delete the [Drvdata.bin] and [Dvidx.bin] files.
9. In the [Inf] folder, double-click the [Other] folder to open it.
10. Find and delete the [Canon.IncCAP_xxx.Inf] file. (The xxx represents numerals.)



You do not need to delete anything if none of the above files are contained in the [Other] folder.



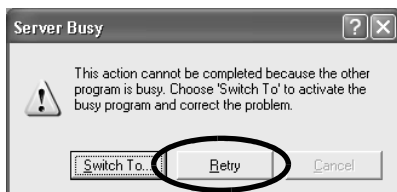
The [Inf] folder contains numerous files critical to the computer's operation. Be extremely careful to delete the correct files. If you delete the wrong files, you may be unable to restart Windows.

<Reinstall the driver>

11. Reinstall the driver with the procedures in *Installing the Software and USB Driver* (p. 10).

A window similar the one below appeared when you downloaded images using ZoomBrowser EX (Windows XP only)

1. Click [Retry].



If the above screen appears again, click [Retry] until it disappears.

Zooming Images in ZoomBrowser EX is Slow or Not Working

Some graphics cards or settings may cause the display of zoomed images in ZoomBrowser EX to slow down or malfunction. If this occurs, set your computer display's Hardware acceleration setting to a lower setting.

1. Click the Windows [Start] menu, followed by [Control Panel] and [Appearance and Themes].
With Windows 2000, Windows Me, or Windows 98, click the [Start] menu and select [Settings], followed by [Control Panel].
2. Click the [Display] icon, followed by the [Settings] tab, [Advanced] button and [Troubleshoot] tab.
With Windows 2000, click the [Display] icon, followed by the [Settings] tab, [Advanced] button and [Troubleshoot] tab.
With Windows Me or Windows 98, click the [Display] icon, followed by the [Settings] tab, [Advanced] button and [Performance] tab.
3. Set the [Hardware acceleration] to a setting below [Full] and click [OK].
4. Restart the computer if prompted.

If You Were Using ZoomBrowser EX Version 2 or 3

Take the following steps if you were using ZoomBrowser EX version 2 or 3 with Windows.

If Titles and Comments Were Attached to Your Images.

Take the following steps to display in version 4 the titles and comments you input in version 2/3.

1. Use Windows Explorer to open the [Program] folder within the folder in which you installed ZoomBrowser EX 4. (e.g. C:\Program Files\Canon\ZoomBrowser EX\Program)
2. Double-click [dbconverter.exe] found in this folder to start this utility.
3. Select the database file you were using up to this point and click the [Start] button.
(e.g. C:\Program Files\Canon\ZoomBrowser EX\Database\My Database.zbd)

This will display the titles and comments input in the earlier versions in the comments section of ZoomBrowser EX 4.

If You Had Images in a Folder Below the Program Files Folder

Image files in the [Program Files] folder or a subfolder cannot be displayed in ZoomBrowser EX 4 from that location. To display these files, first perform steps 1-3 above and then carry on with Step 4.

4. Use Windows Explorer to copy the folder and the images it contains from the [Program Files] folder to another folder.
(e.g. Copy the image folders in C:\Program Files\Canon\ZoomBrowser EX\Library One to another location.

The moved folder images can now be selected and displayed with ZoomBrowser EX 4.

Index

A

Adobe Acrobat Reader 105
 ArcSoft Camera Suite 1.2 104
 ArcSoft Camera Suite 2.0 102

B

Browser Area 31, 67

C

Camera Window
 Macintosh 59, 66
 Windows 19, 22, 30
 Canon Digital Camera Solution Disk
 92
 Macintosh 54
 Windows 10
 CD-ROM 6, 102
 Computer 7, 8, 93
 Connecting to a computer 93
 Macintosh 58, 60
 Windows 14, 18
 Creating a New Folder 65

D

Destination Folder for Images 23
 DIGITAL IXUS 400 96
 DIGITAL IXUS II 97
 Downloading Images
 Macintosh 65
 Windows 22

E

E-mail 5
 Events Dialog 18, 112
 Exif 2.2 (Exif Print)
 Macintosh 69
 Windows 28
 Explorer View 58, 63, 65

F

File Viewer Utility 5
 Macintosh 73
 Windows 33
 Folder
 New 65
 Folder Area 31
 Function Buttons 30, 31

I

ImageBrowser 4, 5
 Auto Start 60
 Automation Wizard Window 61
 Starting 58
 Information about Your Camera 91
 Installer Panel
 Macintosh 54
 Windows 11
 Installing Software
 Macintosh 54
 USB Driver 10
 Windows 10
 Interval Timer Shooting
 Macintosh 82
 Windows 42

L

Layout Options Dialog 68

M

Main Window 23, 31
 Memory Card Folder Structure 110
 Memory Card Reader
 Macintosh 63
 Windows 20
 Merging Panoramic Images
 Macintosh 76
 Windows 36
 Movies
 Macintosh 72
 Windows 32

My Camera Settings

Macintosh 85

Sounds 49

Windows 45

O

Operating the Shutter Remotely 5

Macintosh 78

Windows 38

P

PDF Manuals 105

PhotoRecord 4, 26

PhotoStitch 4

Macintosh 76

Windows 36

PowerShot A300 100

PowerShot A60 99

PowerShot A70 98

PowerShot G5 94

PowerShot S400 DIGITAL ELPH 96

PowerShot S50 95

PowerShot SD100 DIGITAL ELPH 97

Print Layout Settings

Macintosh 70

Print Mode 26

Print Window 68

Printing

Macintosh 68

Windows 25

Printing - Setting the Layout

Macintosh 70

Printing with the date 26

Programs and Compatible Operating

Systems 92

PTP (Picture Transfer Protocol)

Macintosh 67

Windows 24

Q

QuickTime

Windows 36, 49

QuickTime Player

Macintosh 72

Windows 32

R

RAW Images 5

Macintosh 66, 73

Windows 22, 33

RemoteCapture 5

Macintosh 78

Windows 38

S

Save Folder for Images 23

Save-RemoteCapture Window

Macintosh 80

Windows 40

Scanners and Cameras Wizard 24

Shooting-RemoteCapture Window

Macintosh 79

Windows 39

Starting

ImageBrowser 58

ZoomBrowser EX 18

Stitch Assist Mode

Macintosh 77

Windows 37

System Requirements 7

T

Task Buttons 30, 31

Thumbnail

Macintosh 59, 66

Windows 19, 22

Timer Shooting

Macintosh 82

Windows 42

Troubleshooting 111

Start by Checking This 111

U

- Uninstalling Software
 - Macintosh 109
 - Windows 106
- USB Driver 12
 - Uninstalling 107

W

- Windows Explorer 24

Z

- ZoomBrowser EX 5, 18
 - Starting 18
 - Version 2/3 119

MEMO

MEMO

Canon Customer Support

For Canon Customer Support contacts, please see the Canon Limited Warranty supplied with your camera.

ArcSoft Customer Support

North America

46601 Fremont Blvd., Fremont, CA 94538

Tel: (510) 440-9901 (Mon. - Fri., 8:30 AM - 5:30 PM PST)

E-mail: support@arcsoft.com

Other Regions

Please see the ArcSoft web site: <http://www.arcsoft.com/maininternational.html>.

