



# Printer Software Guide

(For Canon CP Printer Solution Disk Version 4)

## Windows



# Contents

<b>Safety Precautions .....</b>	<b>3</b>
<b>Read This First .....</b>	<b>4</b>
About the Manuals .....	4
Printing Flow Diagram .....	5
<b>Printing .....</b>	<b>6</b>
Starting ZoomBrowser EX and PhotoRecord .....	7
Printing with Standard Sheets or Full Size Label Sheets .....	10
Printing on 8-Label Sheets .....	14
Merging Images to Print a Panorama .....	15
Printing Part of an Image (Trimming) .....	17
Adjusting Color and Brightness (Image Quality Adjustment) .....	19
<b>Appendices .....</b>	<b>20</b>
About the Print Area and Pixels .....	20
Print Area .....	20
Number of Pixels .....	22
Troubleshooting .....	23
Error Messages .....	26

# Safety Precautions

The precautions noted within this guide are intended to instruct you in the safe and correct use of the products and to prevent injuries or damage to yourself, other persons and property. Please read and ensure that you understand them before proceeding to other sections of the guide.

## Warning

This symbol indicates topics that could lead to death or serious injury if ignored or handled incorrectly.

## Warning

Do not play the supplied CD-ROM(s) in any CD player that does not support data CD-ROMs. Playing the CD-ROM(s) in an audio CD player (music player) could damage the speakers. It is also possible to suffer from hearing loss from listening with headphones to the loud sounds of a CD-ROM played on a music CD player.

## Disclaimer

- While every effort has been made to ensure that the information contained in this guide is accurate and complete, no liability can be accepted for any errors or omissions. Canon reserves the right to change the specifications of the hardware and software described herein at any time without prior notice.
- No part of this guide may be reproduced, transmitted, transcribed, stored in a retrieval system, or translated into any language in any form, by any means, without the prior written permission of Canon.
- Canon makes no warranties for damages resulting from corrupted or lost data due to a mistaken operation or malfunction of the camera, the software, memory cards, personal computers, peripheral devices, or use of non-Canon memory cards.

## Trademark Acknowledgments

- Microsoft® and Windows® are either registered trademarks or trademarks of Microsoft Corporation in the United States and/or other countries.
- Other names and products not mentioned above may be registered trademarks or trademarks of their respective companies.

Copyright © 2005 Canon Inc. All rights reserved.

## Symbols Used in This Document



Indicates important items or prohibited actions that should always be observed when operating the machine. These should always be read to avoid damage to the machine or improper operation.



Indicates items for reference or supplementary information that should be noted by users.

# Read This First

## About the Manuals

These user guides describe how to connect the printer to a computer and print images.



Printer User Guide

Contains the information necessary to print from your computer, including printer preparation and handling notes, names of parts, installation of necessary software and the printer driver, and connection of the printer to your computer. Please read before using the printer.



This user guide



Describes how to print using the software provided on the supplied CD-ROM (Canon CP Printer Solution Disk).

Screen shots from Windows XP are used for illustration, but the procedure is the same with Windows 98 Second Edition (SE)/Windows Me/Windows 2000.

Detailed explanations of operating procedures are given in the [Help] accompanying each software application.

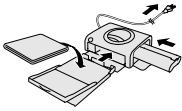


If a problem occurs, refer to the following:

- Trouble with the printer itself:  See the *Printer User Guide*.
- Printing problems:  See this user guide.

# Printing Flow Diagram

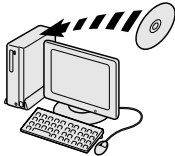
Follow the steps outlined below to prepare the printer and install the necessary software on your computer to enable printing.



## Prepare the printer.

Insert the paper cassette and ink cassette into the printer.

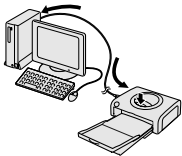
 See the *Printer User Guide*.



## Install the software and printer driver on your computer.

Install the necessary software and printer driver on your computer from the CP Printer Solution disk.

 See the *Printer User Guide*.



## Connect the printer to your computer.

Connect the printer with a commercially available USB cable, and then turn on the printer.


 See the *Printer User Guide*.



## Printing.

Print in a variety of layouts.



 See  
*Printing with Standard Sheets or Full Size Label Sheets* (➡ p.10),  
*Printing on 8-Label Sheets* (➡ p.14)  
in this user guide.

# Printing

This section describes how to use the printing software, PhotoRecord, to print the images displayed in ZoomBrowser EX. ZoomBrowser EX and PhotoRecord are applications included on the Canon CP Printer Solution Disk. These applications simplify the printing process.

Before printing, verify that the printer is on, and that the printer is properly connected to your computer with a USB cable.



- Printers and computer displays use different color reproduction methods, and lighting conditions and display settings affect the appearance of colors on your computer's display. Therefore, the colors in prints may differ from what you see on the screen. This is not a printer problem.
- Do not change the spool settings. The status monitor may not function correctly.



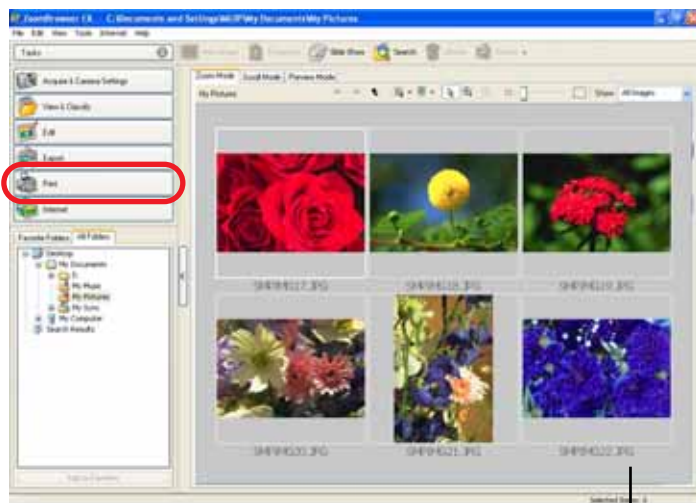
- For information on how to install ZoomBrowser EX and PhotoRecord, see the *Printer User Guide*.
- PhotoRecord allows you to attach various decorative embellishments to images. This is useful for creating greeting cards and so on.

# Starting ZoomBrowser EX and PhotoRecord

- 1 Double-click the [ZoomBrowser EX] icon on the desktop to start the program.

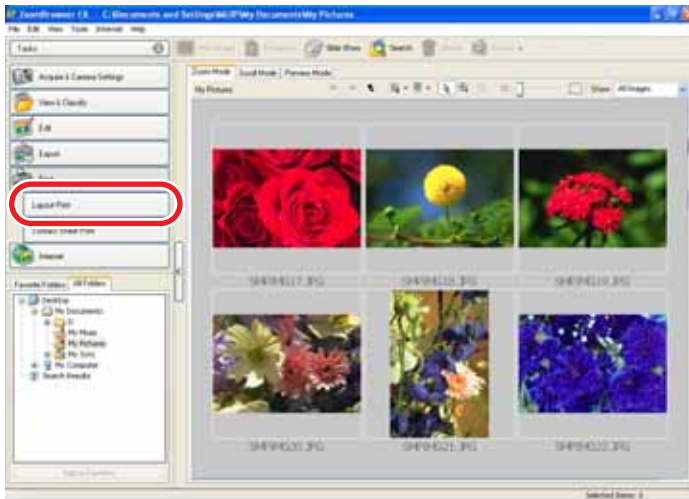
If the [ZoomBrowser EX] icon does not appear on the desktop, click the [Start] menu and select [Programs] or [All Programs], followed by [Canon Utilities], [ZoomBrowser EX] and [ZoomBrowser EX].

- 2 Click [Print].

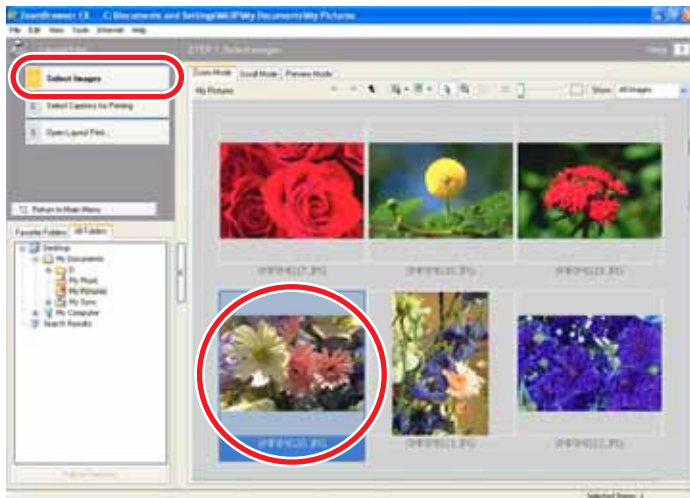


Browser area

### 3 Click [Layout Print].

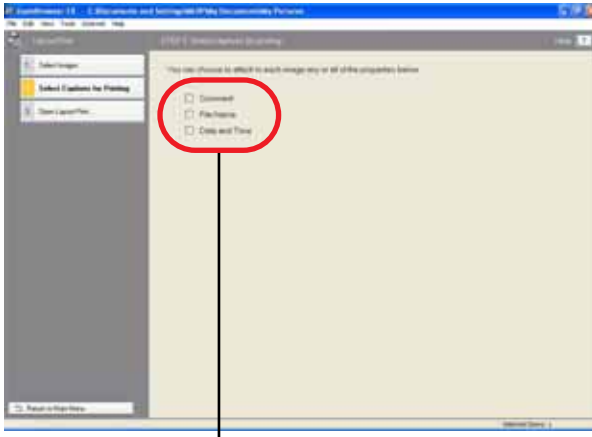


### 4 When [1. Select Images] appears, select an image. The selected image is highlighted in blue.



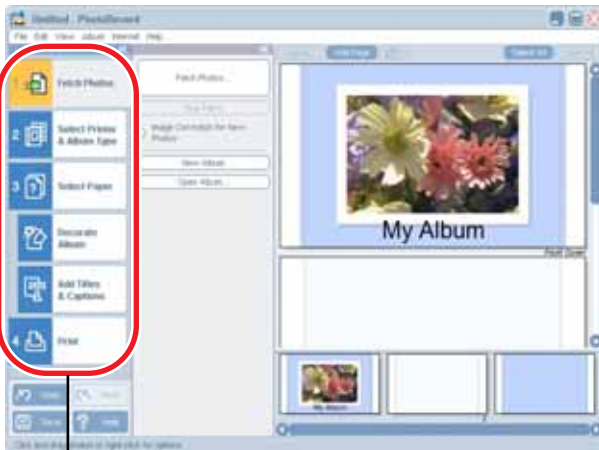


- 5 Click [2. Select Captions for Printing], and then place a check mark beside the information you want to print with the image.**



For example, if you place a check mark beside [Date and Time], the date and time the picture was taken is also printed.

- 6 Click [3. Open Layout Print].**  
The PhotoRecord printing utility will start, displaying the selected image.



Follow this order to print.

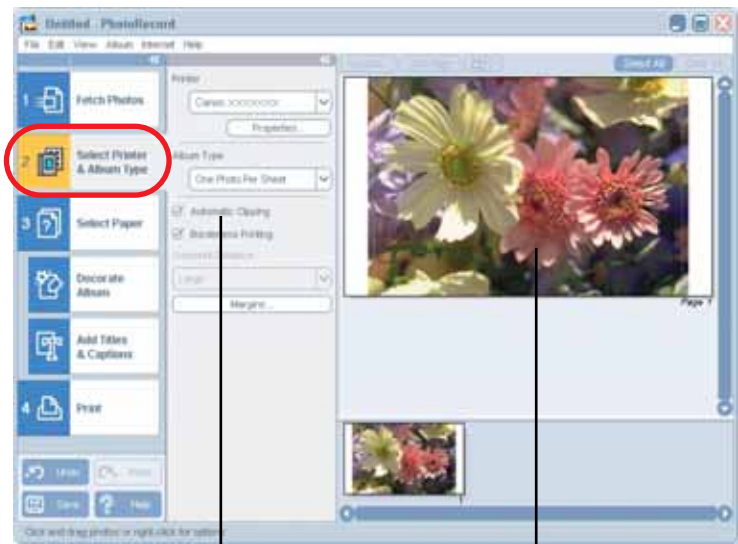


For details about PhotoRecord, see the descriptions displayed in the PhotoRecord [Help] menu.

# Printing with Standard Sheets or Full Size Label Sheets

This example prints a single image, fit to a whole postcard size sheet, with no borders.

- 1 Click [2. Select Printer & Album Type] and then select your printer model name from [Printer]. Next, select [Album Type] to check the print image.



When you select this check box, the image is automatically adjusted to fit the album type.

The print image is displayed.



There are several types of albums. Select the one that suits your needs.

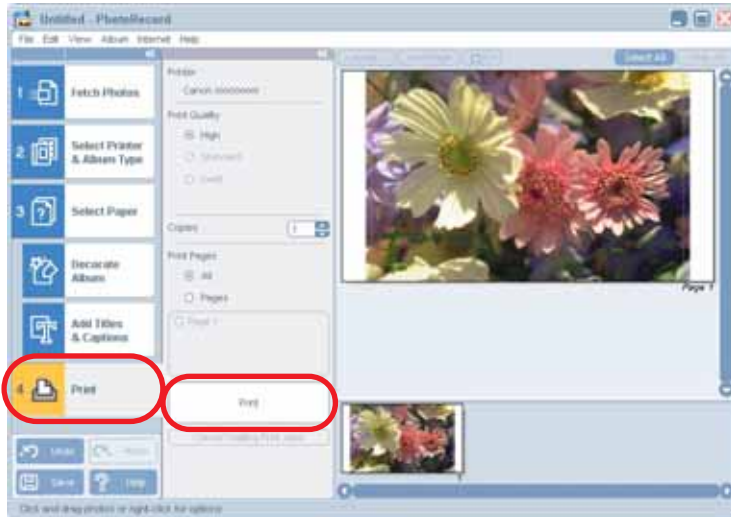
Album Type	Description
One Photo Per Sheet	Prints one image per sheet.
Free Form	Allows free layout of the image for printing.
Contact Sheet	Prints thumbnails and Shooting information.
8-Sticker Label	Prints on 8 label sheets. (➡ p.14)
Fixed Size Photo	Prints the image at the specified image ratio.
Mosaic	Prints a specified number of arranged images.

**2 Click [3. Select Paper], and select the paper size and print orientation.**



- Clicking [Decorate Album] allows you to change image design features such as the border or background. To change the design, click the border or background you want to change.
- Clicking [Add Title & Captions] allows you to attach text such as a title or caption to an image.
- To make copies of an image, right-click the image and select [Make Copies]. Then, input the number of copies you want to make and click [OK] to create the specified number of image copies.
- To add different images, click the [Fetch Photos] button in step [1. Fetch Photos] on the left of the window, and then select the image.

- 3 Click [4. Print], check print settings such as the number of copies, and then click [Print].



If you stop printing while printing is in progress, paper is ejected to the paper handling slot and a printing error may occur. This is not a malfunction, but a mechanism for protecting the print head. If you interrupt printing while it is in progress, be sure to check the printer status.

- **If the indicator lights green:**

You can continue to print.

- **If the indicator lights red:**

Temporarily remove paper from the paper handling slot. Turn the printer off and then back on again. Confirm that the indicator lights green before printing again.

Note that when printing is interrupted, one print's equivalent of the ink cassette's ink sheet is used.

#### 4 **When printing is finished, click the on the upper right of the window to close PhotoRecord.**

To save the album, click [Yes]. If you don't want to save it, click [No].  
The ZoomBrowser EX screen returns after the album is saved.



- Camera information such as scene and photographic conditions are embedded in images captured with cameras compatible with Exif 2.2 (referred to as Exif Print).
- PhotoRecord allows you to print clearer, better-looking images, because it automatically optimizes print quality (as the default setting) for images captured with cameras that support Exif 2.2, as well as other images.

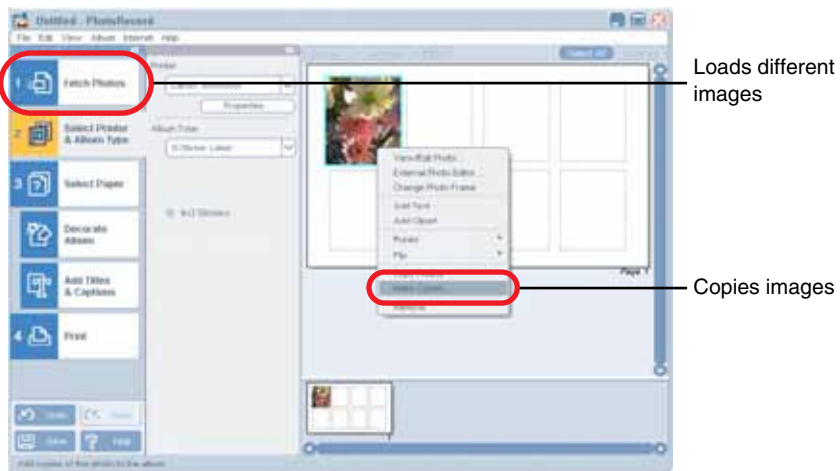
## Printing on 8-Label Sheets

**1** In [2. Select Printer & Album Type], select “8-Sticker Label” from [Album Type].

**2** Select an image.

To make copies of an image, right-click over the screen and select [Make Copies]. Then, input the number of copies you want to make and click [OK] to create the specified number of image copies.

To add different images, click the [Fetch Photos] button in [1. Fetch Photos] on the left of the window, and then select the image.



**3** Click [4. Print], check print settings such as the number of copies, and then click [Print].

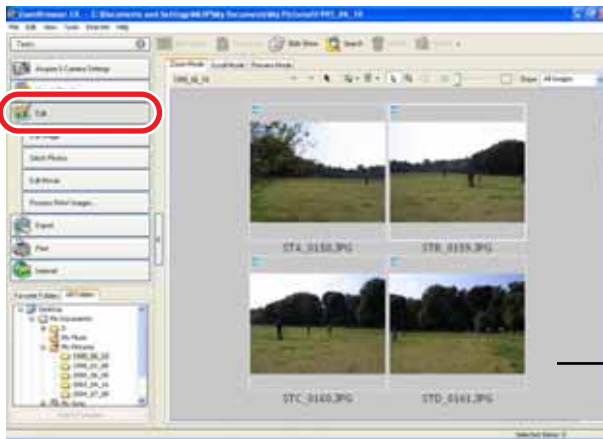
# Merging Images to Print a Panorama

You can create panoramic images by merging multiple images, and then printing them on wide paper. This operation is performed using the PhotoStitch software.



When you use images captured with a Canon digital camera in Stitch Assist mode, PhotoStitch determines the order and direction of the composition automatically, facilitating the composition process.

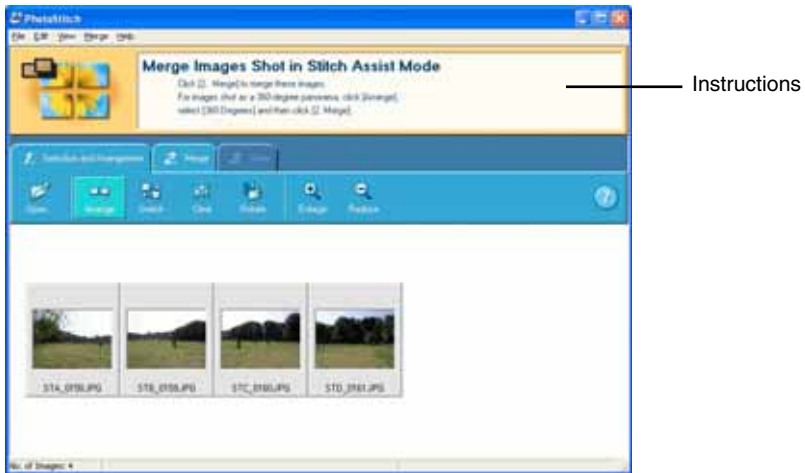
- 1 Click [Edit] in the ZoomBrowser EX main window, and then click [Stitch Photos].




- 2 When [1. Select Images] appears, select the continuous images you want to combine from the browser area.
- 3 Click [2. Open PhotoStitch].  
PhotoStitch starts.



- 4 Merge the images following the instructions in the guidance panel at the top of the PhotoStitch window.



- 5 Save your panoramic image, and then click the  to close PhotoStitch.

- 6 Print the panoramic image.



To print the merged images, see step 2 in *Starting ZoomBrowser EX and PhotoRecord* (➡ p.7).



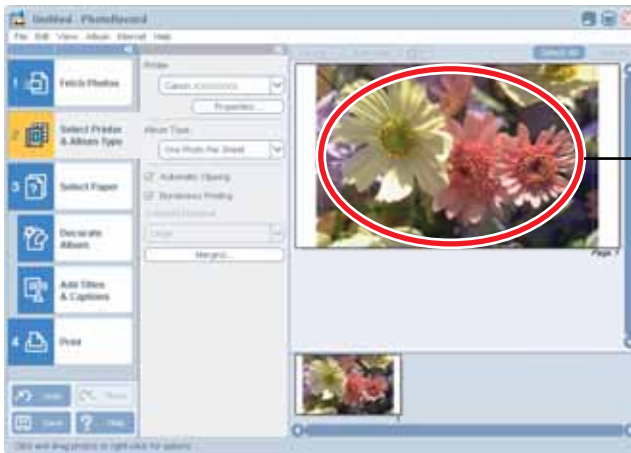
## Printing Part of an Image (Trimming)

You can select and then print a portion of an image. This is useful when you only want to print part of an image, or if the part you are most interested in is not at the center of the image.



Since a 1 - 3 mm border is trimmed from the image during printing, we recommend that you select an area that is slightly larger than the part of the image you want to print.

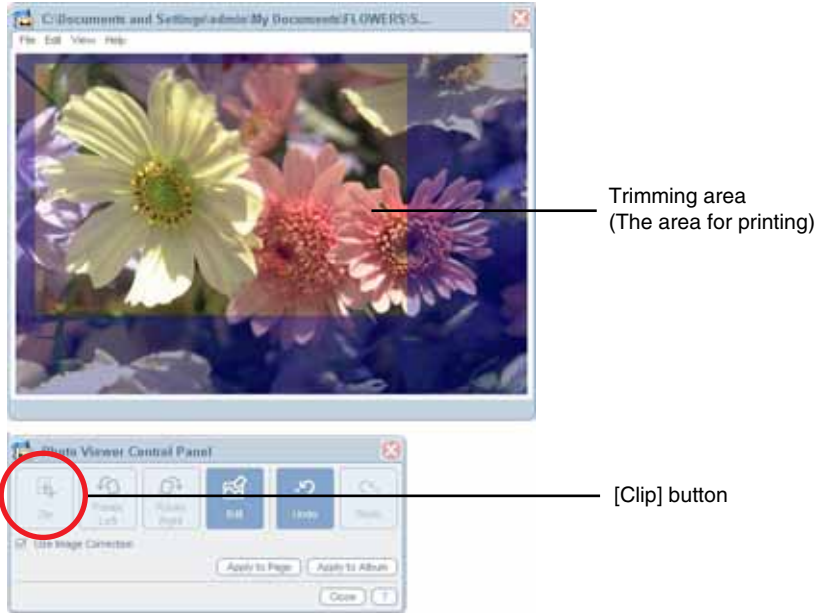
- 1 Double-click the image.



- Double-click the image

The Photo Viewer Control Panel appears.

## 2 Select the area you want to print.



- In [2. Select Printer & Album Type], when [8-Sticker Label] is selected for [Album Type], or the [Automatic Clipping] check box is selected  
The trimming area is set automatically, and the area aspect ratio cannot be modified or the trimming frame removed.  
You can drag the edge of the trimming frame to change its size, or drag inside the frame to move it.
- **Cases other than those above**  
Click the [Clip] button, and then hold down the left mouse button and drag to select the trimming area.  
You can drag the edge of the trimming frame to change its size, or drag inside the frame to move it.

## 3 After making the settings, click the [Close] button to close the Photo Viewer Control panel.

## Adjusting Color and Brightness (Image Quality Adjustment)

- 1 After selecting the printer in [2. Select Printer & Album Type], click [Properties].



- 2 Click the [Image Adjustment] tab and adjust the color and brightness for printing.

For more details, click [?] or [Help] to display [Help].



Adjust the color of print results.

Adjust the brightness and contrast of print results.

- 3 When you have made the settings, click [OK] to close the [Properties] dialog.

# Appendices

## About the Print Area and Pixels

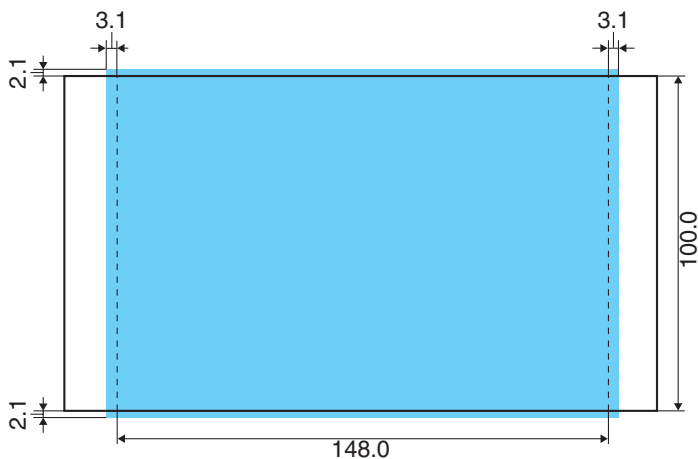
### Print Area

The shaded area ( ) in the following diagrams indicates the maximum printable area.

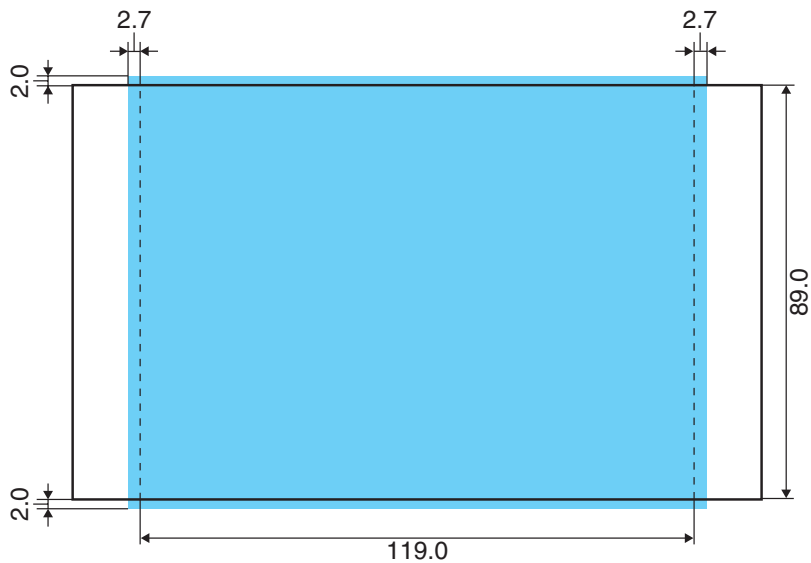
Note that because the print area is larger than the actual paper size, a border is trimmed from the image when it is printed.

(shown in millimeters)

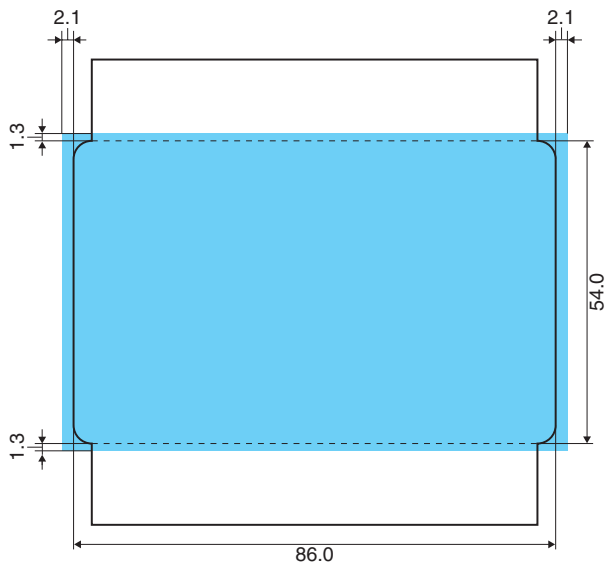
Postcard size sheet



L size sheet

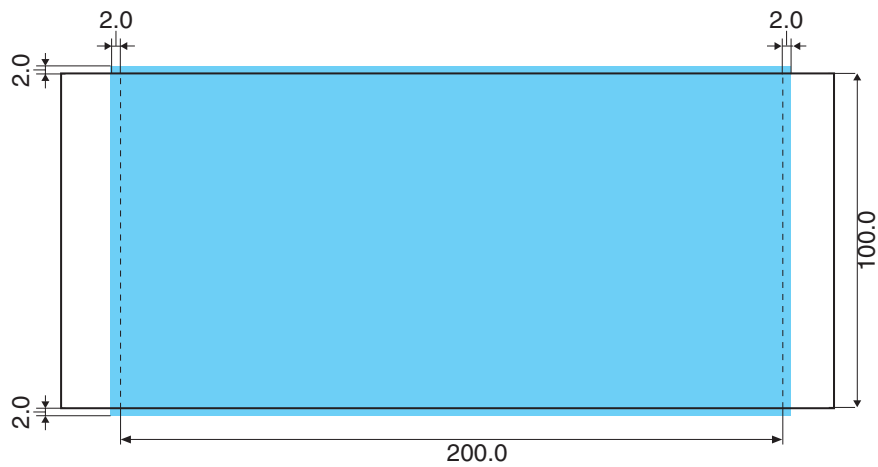


Credit card size sheet (Standard sheets, full-size label sheets and 8-label sheets are available)



With 8-label sheets, the images are laid out to fit the page. The borders around each label are trimmed when printing, so verify the preview image(s) on the screen before printing.

Wide size sheet



Number of Pixels

Paper Type	Total number of pixels (dots)*	Effective number of pixels (dots)
Postcard size sheet	1232 × 1823	approx. 1180 × 1748
L size sheet	1100 × 1471	approx. 1050 × 1406
Credit card size sheet (Standard sheets, full-size label sheets and 8-label sheets are available)	669 × 1066	approx. 638 × 1016
Wide size sheet	1232 × 2416	approx. 1180 × 2362

\* Number of pixels of print area for borderless printing. This also includes the border that is trimmed from around an image during printing.

---

# Troubleshooting

This section describes how to troubleshoot problems.



If the problem still exists after trying these solutions, restart your computer.  
If the problem still persists, uninstall the printer driver and then install it again.

## The printer cannot be selected.

**Cause :** The printer driver is not installed.

**Correction :** Follow the procedure in the Printer User Guide to install the printer driver. Reinstall it if you suspect that it was not installed correctly.

## Printing does not start.

**Cause :** No power is supplied to the printer.

**Correction :** Turn the printer on.

**Cause :** The USB cable is not connected correctly.

**Correction :** Check the USB cable to make sure it is connected correctly.

**Cause :** The printer is offline.

**Correction :** Try the following procedure.

### Windows 98 SE/Windows Me/Windows 2000

1. Click the [Start] button and select [Settings], and [Printers].
2. Right-click the printer icon. If “Use Printer Offline” is selected, clear it.

### Windows XP

1. Click the [Start] button and select [Control Panel], [Printers and Other Hardware], and [Printers and Faxes].
2. If your printer is offline, right-click the printer icon, and then click “Use Printer Online”.

## **Printing stops while it is in progress.**

**Cause :** Power to the printer goes off while printing is in progress.

**Correction :** Turn the printer on.

**Cause :** The USB cable is not connected correctly.

**Correction :** Check the USB cable to make sure it is connected correctly.

**Cause :** A USB hub is being used for the connection.

**Correction :** Be sure to use the USB cable to connect the printer directly to your computer. If you connect via a USB hub, the printer may not function properly.

**Cause :** There is a problem with the printer's spool settings.

### **Windows 98 SE/Windows Me/Windows 2000**

1. Click the [Start] button and select [Settings], and [Printers].
2. Right-click the printer icon and select [Properties].
3. Click the [Details] tab. Click the [Spool Settings] button and then click the [Restore defaults] button.

### **Windows XP**

1. Click the [Start] button and select [Control Panel], [Printers and Other Hardware], and [Printers and Faxes].
2. Right-click the printer icon and select [Properties].
3. Click the [Advanced] tab and then select "Start printing immediately".

**Cause :** To protect the print head from high temperatures, printing is suspended until the print head has cooled down.

**Correction :** This is not a malfunction. When the print head cools, printing will automatically resume.



When the print head gets too hot, usually a message is displayed. However, this message is not displayed if "Notification messages are displayed" is not selected in the [Utilities] tab in the printer driver properties.



**The color of an image seen on the screen is different from that seen in prints.**

**Cause :** Printers and computer displays use different color reproduction methods, and lighting conditions and display settings affect the appearance of colors on your computer's display.

**Correction :** You can adjust color using [Image Adjustment] (➡ p.19).



## Error Messages

If an error occurs while printing is in progress, an error message appears on the screen of your computer.

This section contains a list of error messages as well as the information on how to troubleshoot them.



- If the error does not go away after you have tried the recommended solutions, consult your nearest Canon Customer Support Help Desk.
- Use the information in this section in conjunction with the *Printer User Guide*.

### ■ Errors where printing can resume

If any of the following messages appear, printing can still resume. After using the recommended solution to clear the error, click the [Continue] button to resume printing.

#### **Paper-feed error.**

**Check that paper is correctly loaded in the paper cassette, and that the paper cassette is correctly installed.  
Press [Resume] to resume, or [Cancel] to stop.**

**Cause :** The paper cassette is not inserted correctly.

**Correction :** Remove the paper cassette, and then insert it back into the printer correctly.

**Cause :** Paper is not inserted correctly in the paper cassette.

**Correction :** Remove the paper, and then insert it back into the paper cassette correctly.

**Cause :** There is no paper in the paper cassette.

**Correction :** Add more paper to the paper cassette.

**Ink cassette is empty and must be replaced.  
Press [Resume] to resume, or [Cancel] to stop.**

**Cause :** There is no more ink in the ink cassette.

**Correction :** Replace the ink cassette with a new one.

In the following cases, the number of prints specified for the installed Color Ink/Paper Set may not be obtained:

- If printing has been interrupted in progress
- If the ink sheet has been wound too tightly (while removing slack from the ink sheet)

**Ink cassette not installed.  
You must insert an ink cassette before printing.  
Press [Resume] to resume, or [Cancel] to stop.**

**Cause :** The ink cassette is not inserted into the printer.

**Correction :** Insert the ink cassette into the printer.

**The printer is not ready for printing.  
Check the printer power and printer connections.**

**Cause :** No power is supplied to the printer.

**Correction :** Turn the printer on.

**Cause :** The USB cable is not connected correctly.

**Correction :** Check the USB cable to make sure it is connected correctly.

**No Paper Cassette has been found.  
Insert an appropriate one.  
Press [Resume] to resume, or [Cancel] to stop.**

**Cause :** The paper cassette is not inserted.

**Correction :** Insert the paper cassette into the printer.

**Wrong type of paper.  
Replace with the right type.  
Press [Resume] to resume, or [Cancel] to stop.**

**Cause :** The paper is not suitable for the print settings.

**Correction :** Replace the paper with the correct size.

**The paper cassette differs from the setup.  
Please check the paper cassette.  
Press [Resume] to resume, or [Cancel] to stop.**

**Cause :** The paper cassette in the printer is not suitable for the print settings.

**Correction :** Insert the correct paper cassette.

**The specified Ink Cassette cannot be found.  
Replace the Ink Cassette with the specified one.  
Press [Resume] to resume, or [Cancel] to stop.**

**Cause :** The ink cassette in the printer is not suitable for the print settings.

**Correction :** Insert the correct ink cassette.

**The specified Ink Cassette and Paper cannot be found.  
Replace the Ink Cassette and Paper with the specified one.  
Press [Resume] to resume, or [Cancel] to stop.**

**Cause :** The ink cassette and paper in the printer are not suitable for the print settings.

**Correction :** Insert the correct ink cassette and paper.

**The battery capacity of the printer is insufficient.  
Please connect AC adapter and press [Resume] to resume, or click [Cancel] to stop printing and replace the battery.**

**Cause :** The printer's battery charge is running low. The printer will not work.

**Correction :** Use a new or fully charged battery pack, or use the printer with the AC adapter (compact power adapter) connected.

## ■ Errors where printing is canceled

If any of the following messages appear, printing is canceled. After using the recommended solution to clear the error, you need to start the print job over again.

### **Paper jammed in printer.**

**Clear the jam as follows, then try printing again.**

1. Remove the paper that caused the error.
2. Turn printer off and back on.

**Cause :** Paper is jammed inside the printer while printing, or there is paper still inside the printer before printing starts.

**Correction :** After closing the dialog, turn the printer off and then back on again. Paper is automatically ejected from the print receptacle or the paper handling slot. Remove the paper and then turn the printer off and back on again a second time, and start the print job over.

### **Problem with ink cassette.**

**Correct as follows, then try printing again.**

1. Check the state of the ink cassette.
2. Turn printer off and back on.
3. Remove the paper that caused the error.

**Cause :** There is a problem with the ink cassette.

**Correction :** Take out the ink cassette from the printer. Remove any slack from the ink sheet and then insert the ink cassette back into the printer. If the problem still continues, replace the ink cassette with a new one.

**Error occurred during communication.  
Check the printer power and printer connections.**

**Cause :** Power to the printer goes off while printing is in progress.

**Correction :** Turn the printer on.

**Cause :** The cable came loose or was disconnected while printing was in progress.

**Correction :** Check to make sure the USB cable is connected correctly.



If the USB cable is not properly connected, communication problems may occur. Make sure that the printer is connected to your computer's root hub port with suitable USB cable, and then try printing again.

**Problem with the printer.  
Turn printer off and back on.**

**Cause :** The printer unit was not initialized successfully.

**Correction :** Turn the printer off and back on again. Start the print job over.

**Cause :** There is too much paper in the paper cassette.

**Correction :** Remove paper from the paper cassette, and then make sure to load the correct amount of paper in the paper cassette.

For messages caused by errors related to the operating environment of your computer, follow the messages on the screen.

