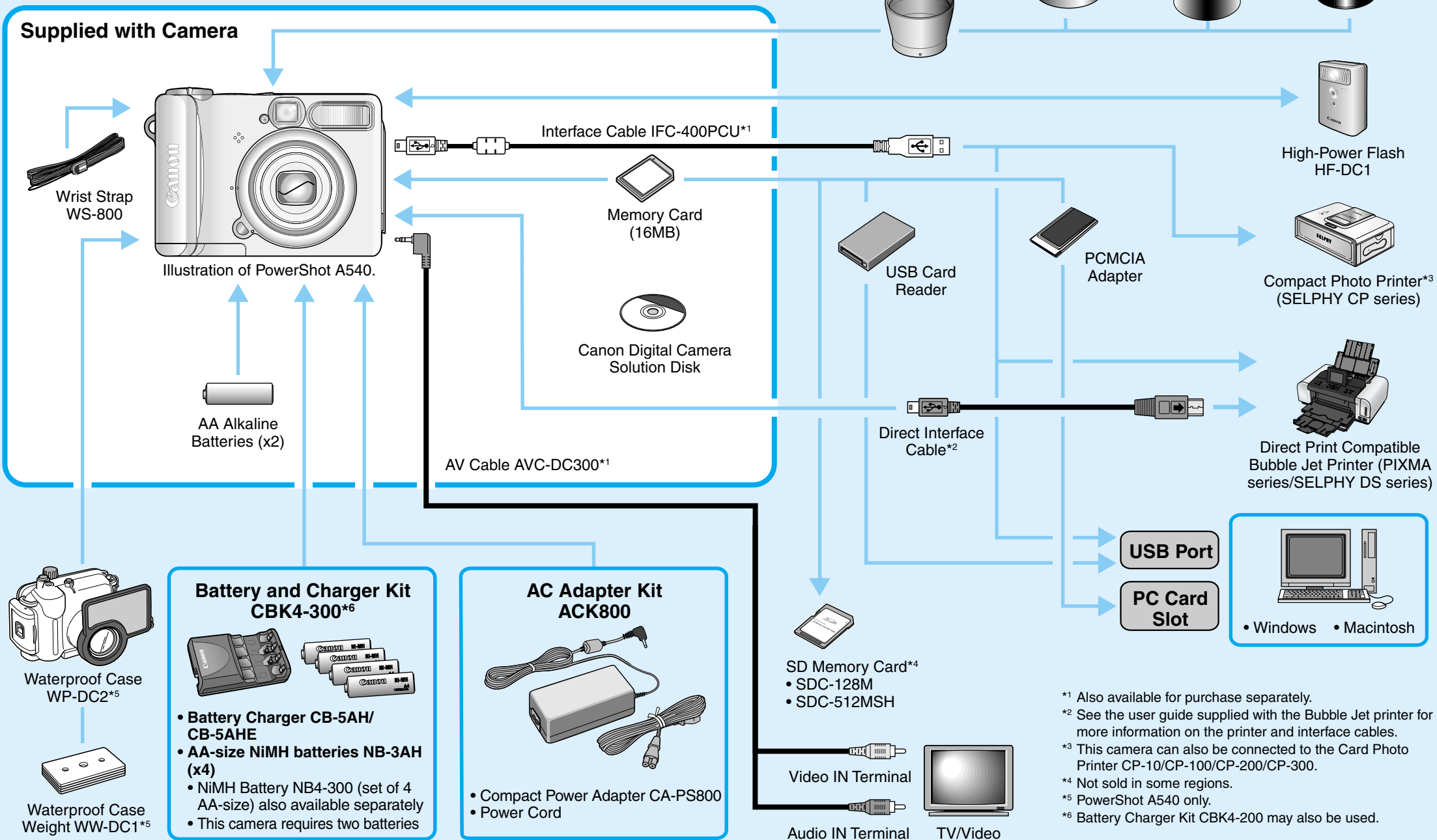


PowerShot A540/A530 SYSTEM MAP

DIGITAL CAMERA

Canon



^{*1} Also available for purchase separately.

^{*2} See the user guide supplied with the Bubble Jet printer for more information on the printer and interface cables.

^{*3} This camera can also be connected to the Card Photo Printer CP-10/CP-100/CP-200/CP-300.

^{*4} Not sold in some regions.

^{*5} PowerShot A540 only.

^{*6} Battery Charger Kit CBK4-200 may also be used.

Confirming the Package Contents

Your camera package includes all of the following items. If any of these items are missing, please contact the dealer for assistance.

- Digital Camera
- Wrist Strap WS-800
- AA Alkaline Batteries (x2)
- Memory Card (16MB)
- Interface Cable IFC-400PCU
- AV Cable AVC-DC300
- Canon Digital Camera Solution Disk
- Basic Camera User Guide
- Advanced Camera User Guide
- Direct Print User Guide
- Software Starter Guide
- System Map (this sheet)
- Warranty Card
- “For Windows® XP and Mac OS X Users” Leaflet
- “Canon Customer Support” Leaflet

Optional Accessories

The following camera accessories are sold separately. **Some accessories are not sold in some regions.**

Lenses, Lens Adapter (PowerShot A540 only)

- **Conversion Lens Adapter LA-DC52F**
This adapter is required for mounting the wide converter and tele-converter to the camera.
- **Wide Converter WC-DC52**
Converts the focal distance of the body lens by a factor of approximately 0.7 when attached.
- **Tele-converter TC-DC52A**
Converts the focal distance of the body lens by a factor of approximately 1.75 when attached.
- **Close-up Lens 250D (52mm)**
A lens for shooting at higher magnifications when the camera's macro mode is used.

Flash

- **High-Power Flash HF-DC1**
This attachable supplementary flash can be used to capture the photographic subjects that are too distant for the built-in flash to illuminate.

Power Supplies

- **AC Adapter Kit ACK800**
This kit lets you power the camera from any standard household power outlet. Recommended to power a camera for an extended period of time or when connecting to a computer.
- **Battery and Charger Kit CBK4-300**
This dedicated battery charger kit includes both a charger unit and four rechargeable AA-size NiMH (nickel metal hydride) batteries. Convenient when taking or playing back large numbers of images.
- **NiMH Battery NB4-300**
A set of four rechargeable AA-size NiMH batteries.
(This camera requires two batteries.)

Other Accessories

- **SD Memory Card**
SD memory cards are used to store images recorded by the camera. Canon brand cards are available in 128 MB and 512 MB capacities.
- **Interface Cable IFC-400PCU**
Use this cable to connect the camera to a computer, Compact Photo Printer (SELPHY series) or to a Bubble Jet printer (refer to your Bubble Jet printer user guide).
- **AV Cable AVC-DC300**
Use this cable to connect the camera to a TV set.
- **Waterproof Case WP-DC2**
(PowerShot A540 only)
You can use this case to take underwater shots at depths of up to 40 meters (130 feet), and of course it's ideal for taking worry-free pictures in the rain, at the beach, or on the ski slopes.

Direct Print Compatible Printers

Canon offers the following separately sold printers for use with the camera. You can produce photo quality prints quickly and easily by connecting them to the camera with a single cable and operating the camera's controls.

- **Compact Photo Printers (SELPHY series)**
- **Bubble Jet Printers**

For more information, visit your nearest Canon retailer.