

PowerShot S70 DIGITAL CAMERA Quick Start Guide

CDI-E153-010 XXXXXXXX © 2004 CANON INC. PRINTED IN JAPAN

The following manuals are supplied with your camera. Please refer to them as need be.

Contents of This Guide

1. Install the battery pack and the CF card.

2. Shoot images with the camera.

3. Play back the images.

4. Erase any unwanted images.

Learn the names of camera components.

5. Print the images.

6. Install the software.

Connect the camera to a computer.

Windows Macintosh

7. Download the images to a computer.

Windows Macintosh

What you can do with the software

The various ways of using the software

Reference Guides

System Map

Quick Start Guide

Camera User Guide

Direct Print User Guide

Printer User Guide

Supplied with a printer

Camera User Guide

Software Starter Guide

ZoomBrowser EX Software User Guide

ImageBrowser Software User Guide

These PDF format manuals are available on the Canon website. Please download them from the following URL: <http://web.canon.jp/imaging/information-e.html>

1 Preparing the Camera → Camera User Guide

- A. Charge the battery pack.

Place the battery pack in the battery charger and plug the charger into a power outlet or attach the power cord to the battery charger and plug the other end into a power outlet. The charge indicator lights red while charging and changes to green when the battery pack is charged. Charging the battery pack takes approximately 90 minutes.

Charge Indicator

Battery charger model names and types vary by region.
- B. Slide the CF card slot / battery cover and open the cover.
- C. Hold back the battery lock in the direction of the arrow with the corner of the battery pack, then insert the battery pack.

Battery Lock
- D. Insert the CF card.

Insert the CF card with its label facing towards you, and push the card in until the CF card eject button fully extends.

CF Card Eject Button
- E. Close the cover.

2 Shooting → Camera User Guide

- A. Open the lens cover and set the shooting mode dial to **AUTO**.

The power/mode indicator lights orange.
- B. Set the date and time (first time the camera is powered on).

1 Use the ◀ or ▶ arrow on the omni selector to select the items you wish to set, and use the ▲ or ▼ arrow to change the value.

2 Check that the date and time shown are correct, then press the **SET** button.
- C. Aim the camera at the subject and adjust the zoom to achieve the desired composition. See "Zoom" in the "Quick Reference."
- D. Focus and shoot.

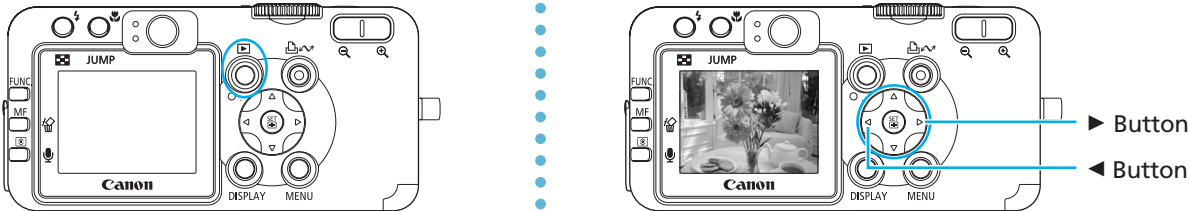
1 Press the shutter button halfway to focus (The camera focuses and two beeps sound.).

2 Press the shutter button all the way to shoot.

3 Playing back the Images → Camera User Guide

- A. Press the **▶** (Playback) button.
- B. Play back the images.

Use the ◀ or ▶ arrow on the omni selector to display the image you wish to see.



4 Erase an Image → Camera User Guide

- A. In Playback mode, use the ◀ or ▶ arrow on the omni selector to select the image you wish to erase (1) and press the **⏏** button (2).
- B. When the confirmation screen appears, check that [Erase] is selected and press the **SET** button.

Select [Cancel] using the ◀ or ▶ arrow on the omni selector to cancel without erasing.



Quick Reference → Camera User Guide

Flash

Press the **⚡** button to switch between flash modes. Some settings are not available with certain shooting modes.

When the red-eye reduction function is on

Auto with red-eye reduction

Flash on with red-eye reduction

Flash off

When the red-eye reduction function is off

Auto

Flash on

Flash off

Flash range: 55 cm – 2.0 m (1.8 – 6.6 ft.) (telephoto)/55 cm – 4.2 m (1.8 – 14 ft.) (wide angle)
* Red-eye reduction: This feature reduces the effect of light reflecting back from the eyes and making them appear red.

Macro Mode

Press the **🌸** button to display **🌸** on the LCD monitor. Use this mode to shoot close-ups of flowers or small objects.

* **Recordable Area at Minimum Shooting Range**
<Shooting Distance>
At wide angle end: 64 x 47 mm (2.5 x 1.9 in.)
<From the front of lens: 4 cm (1.6 in.)>
At telephoto end: 106 x 80 mm (4.2 x 3.2 in.)
<From the front lens: 30 cm (1 ft.)>

Switching between Shooting/Playback

Shooting:
Open the lens cover. When the lens cover is already open, press the shutter button halfway.

Playback:
Press the **▶** (Playback) button.



Changing the Displayed Information

Press the **DISPLAY** button to switch the displayed information as follows.

Shooting Mode:

LCD Monitor (No Information)

LCD Monitor (Information View)

LCD Monitor - Off

Playback Mode:

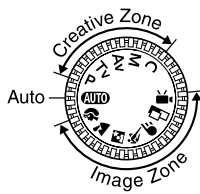
Standard Display

Detailed Display

No Information

Shooting Modes

- AUTO:** **AUTO**
The camera automatically selects settings.
- Portrait**
The background is blurred and the subject is in clear focus.
- Landscape**
For shooting landscape scenes.
- Night Scene**
For photographing human subjects against the backdrop of an evening sky or a night scene.
- Fast Shutter**
For shooting fast moving objects.
- Slow Shutter**
For shooting moving objects to make them appear blurred, such as river rapids.
- Stitch Assist**
Images shot in Stitch Assist mode can be merged together on a computer to make a single panoramic image.
- Movie**
For shooting movies.



Zoom

- Wide Angle**
Zoom out from the subject.
- Telephoto**
Zoom in on the subject.
- * The zoom can be adjusted from 28 to 100 mm (35mm film equivalent).

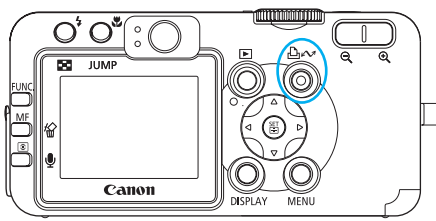
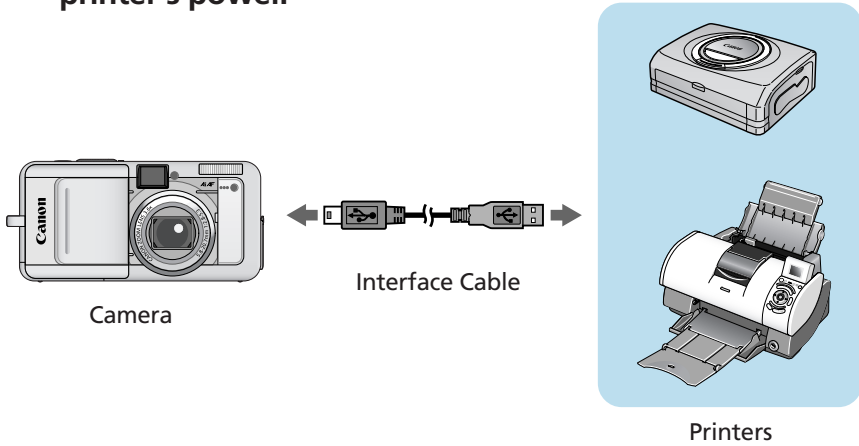
In addition, there are functions that can be set in each shooting mode. For details see "Functions Available in Each Shooting Mode" at the end of the Camera User Guide.

5 Printing with a Direct Print Compatible Printer → Direct Print User Guide

- A. Connect the camera to the printer and turn on the printer's power.
- B. **SET**, **▶** or **⏏** appears* in the upper left corner of the camera's LCD monitor, indicating that the printer is ready to print.

* The displayed icon may vary depending on the printer model.
- C. Choose the image you wish to print and press the **▶** button.

The **▶** button will blink blue and printing of the image will start.



6 Preparing to Download Images to a Computer → Camera User Guide, Software Starter Guide

! Never connect the camera to the computer before the software is installed.

List of Things to Prepare

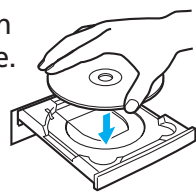
- Camera and Computer
- Canon Digital Camera Solution Disk provided with the camera
- Interface Cable (use the cable provided with the camera)

A. Confirm that the computer meets the system requirements.

See the *Camera User Guide*.

B. Install the software.

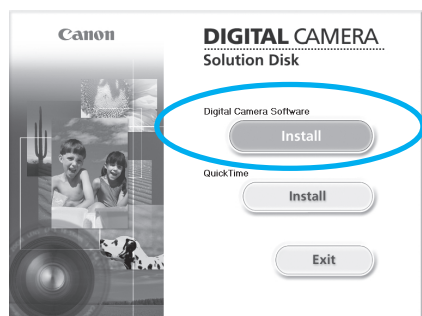
- a. Place the Canon Digital Camera Solution Disk into your computer's CD-ROM drive.



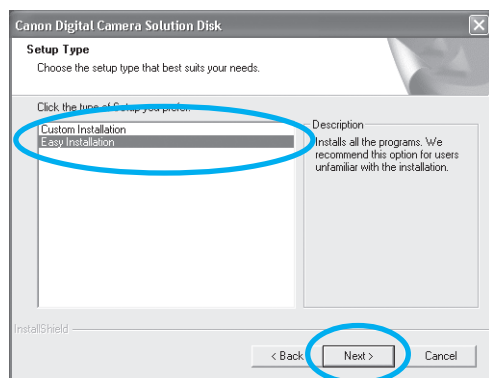
Macintosh

- Double-click the [Canon Digital Camera Installer] (📀) icons in the CD-ROM window.

- b. Click the Digital Camera Software [Install] button and click [Next].

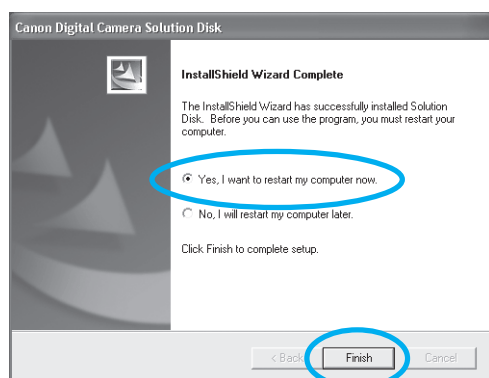


- c. Select [Easy Installation] and click [Next].



Proceed with the installation while reviewing installation settings.

- d. When the installation is complete, select [Yes, I want to restart my computer now.] as shown in the screen below, and click [Finish].



Macintosh

Once the installation is complete, click [Quit].

- e. Remove the disk from the CD-ROM drive after restarting.

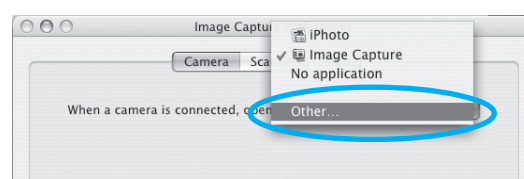
Macintosh

Set the ImageBrowser auto start settings before you connect the camera to the computer for the first time.

■ ImageBrowser Auto Start Settings

OS X (v10.2/v10.3)

1. Start Image Capture, click the [Image Capture] menu and select [Preferences].
2. In the next menu, click the [When a camera is connected, open:] list box and select [Other].

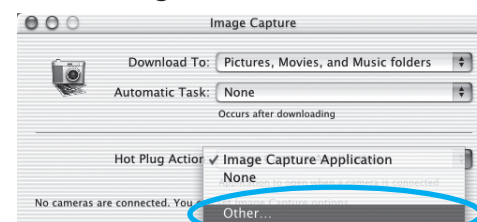


The window will appear slightly different in v10.2.

3. Select [CameraWindow] in the program selection window. CameraWindow is generally installed into the folder opened by selecting the [Applications], [Canon Utilities] and [CameraWindow] folders.
4. Click [OK] and then close Image Capture.

OS X (v10.1)

1. Start Image Capture and select [Other] from the Hot Plug Action list box.



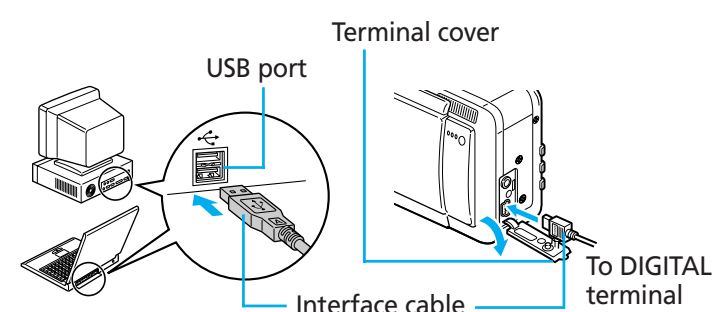
2. Select [CameraWindow] in the program selection window.

CameraWindow is generally installed into the folder opened by selecting the [Applications], [Canon Utilities] and [CameraWindow] folders.

3. Close Image Capture.

C. Connect the camera to the computer.

- a. Connect the supplied interface cable to the computer's USB port and the camera's DIGITAL terminal.
1. Open the terminal cover with your fingernail.
 2. Securely insert the cable into the DIGITAL terminal and the USB port.



Once connected, the camera and the computer will be able to automatically communicate.

Windows

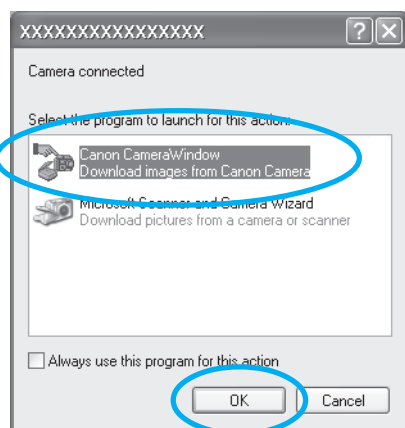
If the Digital Signature Not Found window appears, click [Yes].

The USB driver will automatically finish installing onto the computer when you attach the camera and open a connection.

7 Downloading Images to a Computer Windows → Camera User Guide, Software Starter Guide

A dialog allowing you to set the default settings will display when you attach the camera and open a connection.

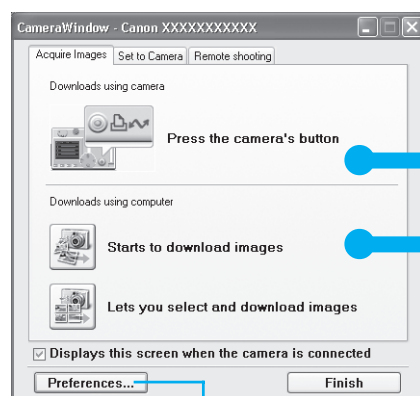
A. Select [Canon CameraWindow] and click [OK] (first time only).



! If the window shown above does not appear, click the [Start] menu, then select [Programs] or [All Programs], followed by [Canon Utilities], [CameraWindow] and [CameraWindow].

B. Download the images.

Download the images using the camera or the computer. By default, the downloaded images are saved into the [My Pictures] folder.



You can adjust the settings, such as the type of image downloaded and the destination folder, by clicking [Preferences].

Downloading Images Using Computer Operations

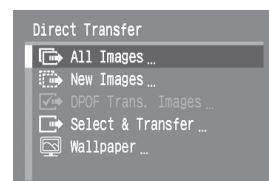
- c. Click [Starts to download images].
- By default, all the images that have yet to be downloaded will download.

By default, the downloaded images will appear as thumbnails (tiny versions) in the main window of ZoomBrowser EX. Downloaded images are saved in separate folders according to the date on which they were shot.

Downloading Images Using Camera Operations (Direct Transfer)

- c. Confirm that the button lights blue.

- d. When the Direct Transfer menu appears in the camera's LCD monitor, select (All Images) and press the button.



All the images on the camera's memory card will download. To selectively download images, select (Select & Transfer).

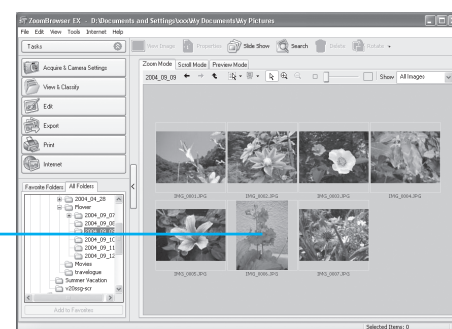


Image download is complete.

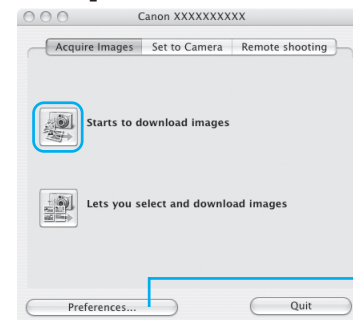
7 Downloading Images to a Computer Macintosh

→ Software Starter Guide

The following window will display when the camera and computer are set to the correct mode for communicating.

Double-click the [Canon CameraWindow] icon on the desktop if the window does not appear.

A. Click [Starts to download images].



You can set the type of image to download and the destination folder by clicking [Preferences].

By default, all the images that have yet to be downloaded will download to the [Pictures] folder. Also, when downloading is complete, the thumbnails (tiny versions) of the downloaded images display in ImageBrowser's Browser Window.

The downloaded images will be saved into folders according to their shooting date.



Getting the Most out of the Software → Software Starter Guide, ZoomBrowser EX / ImageBrowser Software User Guide

What you can do with ZoomBrowser EX (Windows) / ImageBrowser (Macintosh)

■ Downloading Images to a Computer

You can easily download images saved in the camera to a computer.

■ Checking Images

You can magnify images and check the information on them (the shooting date and time, the shooting settings, etc.)

■ Sending Images by E-mail

You can start your e-mail program from ZoomBrowser EX (Windows) / ImageBrowser (Macintosh) and attach images to e-mail messages that you send.

■ Shooting with a Computer

You can operate the camera's shutter and take pictures from a computer.

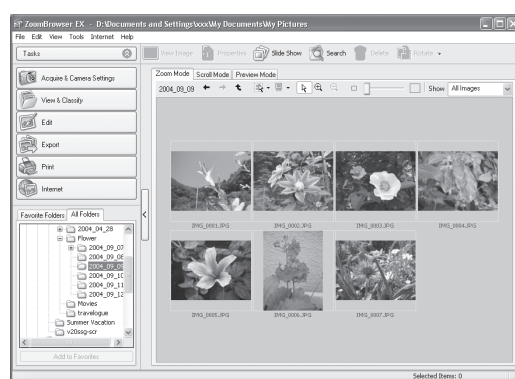
■ Editing Movies

You can create and edit movies: link movies and stills that have been downloaded to your computer, add background music, superimpose titles and other text, and apply various effects to the movies.

■ Converting RAW images* to General File Formats

RAW images downloaded into a computer can be converted and saved to general file formats, such as TIFF and JPEG.

* High-quality images in which the pixels from the CCD are recorded as is, without any deterioration in image quality.



■ Using the My Camera Settings

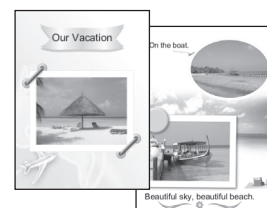
Your favorite images and sounds can be registered as startup-up images and sounds with My Camera Settings.

What you can do with other software

You can use this software in even more advanced ways by linking it with other software.

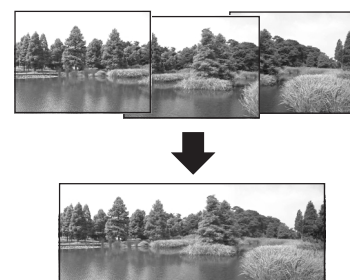
■ Printing Images with Different Layouts

With PhotoRecord (Windows)/ ImageBrowser (Macintosh), you can lay out images as desired and then print them.



■ Stitching Panoramic Images

With PhotoStitch, you can connect or "stitch" multiple images together into a seamless panoramic view.



A Guide to the Manuals

■ Basic Methods: Software Starter Guide

The manuals in PDF format shown below are available on the Canon website. Please download them from the following URL:

- <http://web.canon.jp/Imaging/information-e.html>
- ZoomBrowser EX Software User Guide (Windows)
- ImageBrowser Software User Guide (Macintosh)

Viewing the PDF Manuals

The software application Adobe Reader or Adobe Acrobat Reader is required to view the PDF manuals. If one of these applications is not already installed on your computer, download it from the following website.

<http://www.adobe.com/products/acrobat/readstep2.html>