

MultiPASS™ F80 Set-Up Sheet

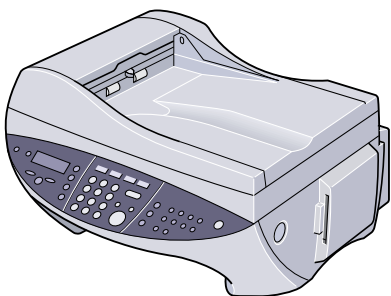
READ THIS SHEET FIRST

Thank you for purchasing the Canon MultiPASS F80.
To get your machine ready for use, please follow the instructions in this Set-Up Sheet before referring to any other documentation.

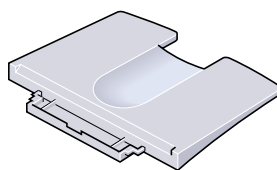
1

Unpack the machine and its components.

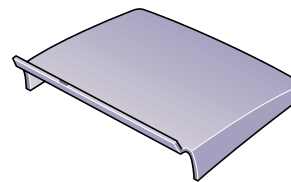
Check that you have the following:



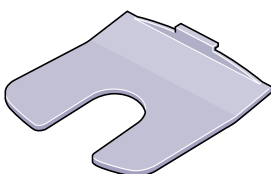
• Machine



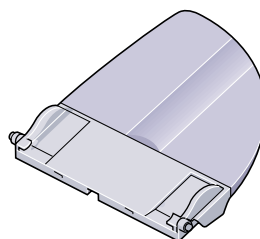
• Multi-purpose tray



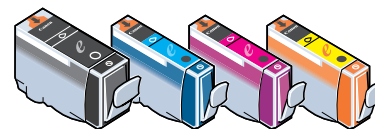
• Tray cover



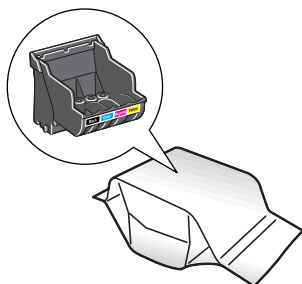
• Paper output tray



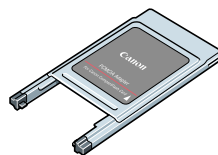
• Document tray



• Ink tanks
(Black, cyan, magenta, yellow)



• Printhead



• PCMCIA card adapter

- Power cord
- Documentation
(Set-Up Sheet, Basic Guide, Extended Service Plan, Registration Card)
- MultiPASS Suite software CD-ROM
- Telephone line cord
- Destination labels

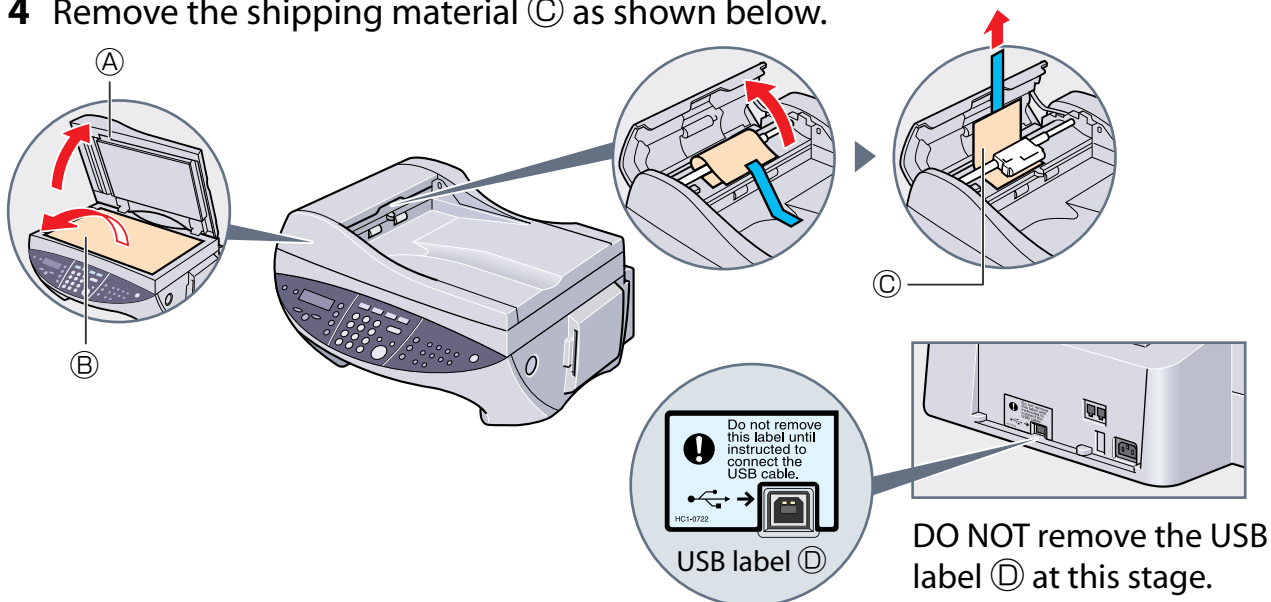
NOTE

- A printer cable is not included. You must purchase a USB cable (less than 16.4 ft./5 m) to connect your machine to a computer.

2

Remove the shipping material from the machine.

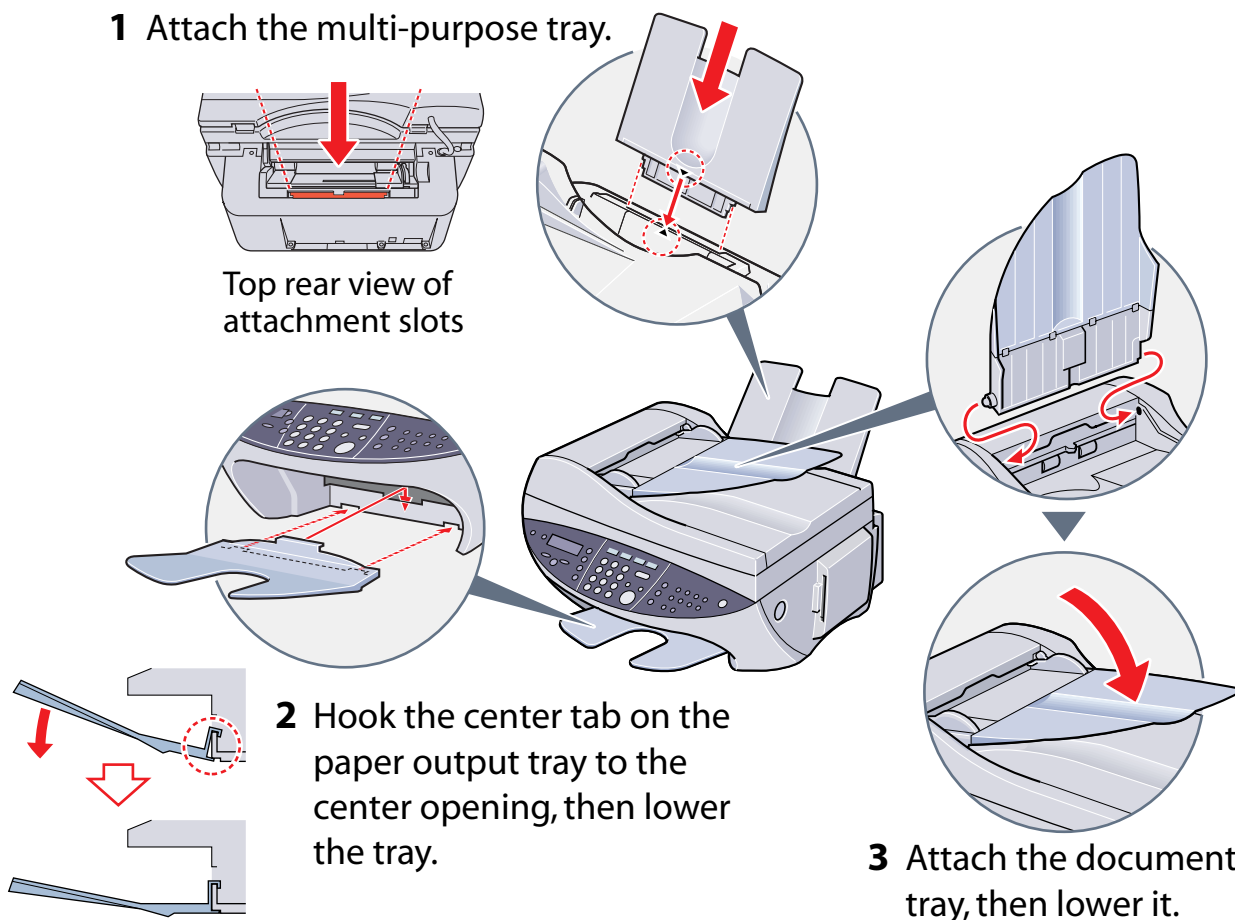
- 1 Place the machine on a flat surface.
- 2 Remove **all** shipping tapes from the **exterior** of the machine.
- 3 Open the document cover (A) and remove the protective sheet (B).
- 4 Remove the shipping material (C) as shown below.



3

Assemble the machine.

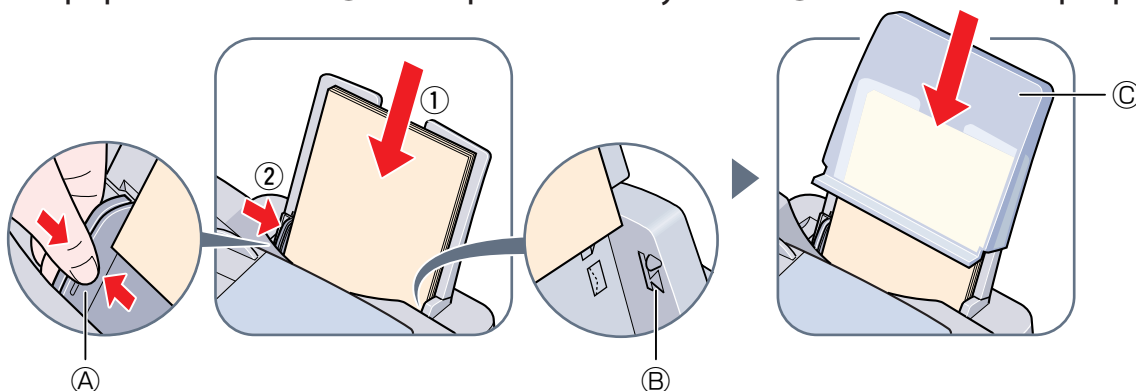
- 1 Attach the multi-purpose tray.



4

Load paper.

Place a stack of paper (print side up) in the multi-purpose tray ① and adjust the paper guide ② to the width of the stack. Make sure the stack does not exceed the paper limit mark ③. Then place the tray cover ④ over the multi-purpose tray.



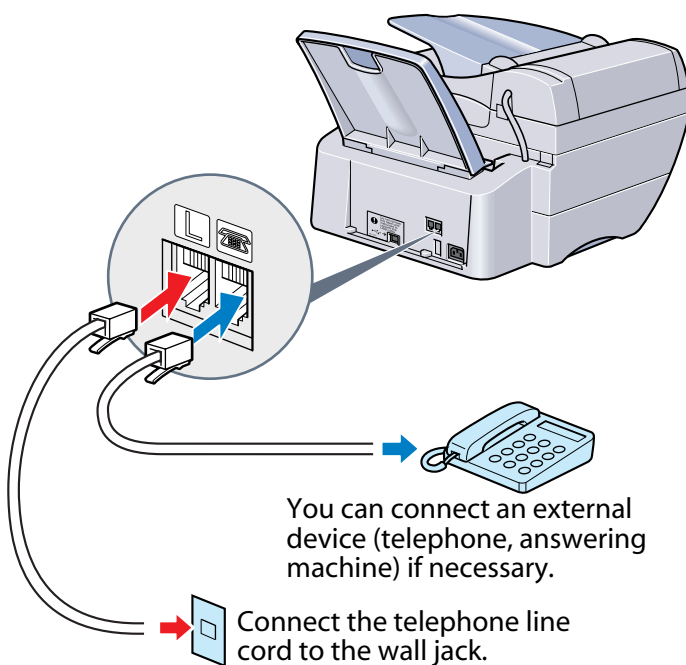
5

Connect the telephone line and any necessary external device, and set the receive mode.



IMPORTANT

- Set the receive mode any time after the power cord is connected in step 6. Setting the receive mode is important for you to use the faxing capability of your machine.



NOTE

- Before using your machine, you need to make sure it is set for your telephone line type. For details, see p. 8-2 of the *Basic Guide*.

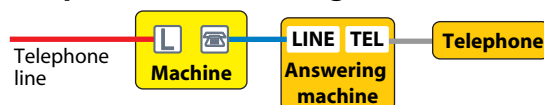
Connect external devices as follows:

- ☐ = Telephone line jack
- ☐ = External device jack

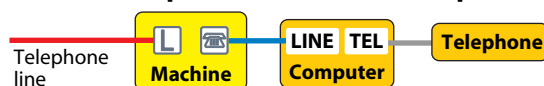
• Telephone or answering machine



• Telephone and answering machine



• Built-in computer modem and telephone



Set the receive mode as follows:

- 1 On the operation panel, press [Fax], [Menu], then [Set].

Ex: RECEIVE MODE
FAX/TEL AUTO SW

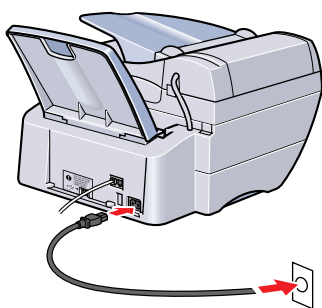
- 2 Use [◀] or [▶] to select the receive mode:

- Select:
 - <FAX/TEL AUTO SW> to receive both faxes and voice calls (a telephone must be connected to the machine).
 - <FAX ONLY MODE> to receive faxes only.
 - <DRPD> if you have subscribed to a DRP (Distinctive Ring Pattern) service offered by some companies. (For details, refer to the *Comprehensive Guide*.)
 - <MANUAL MODE> to answer all voice and fax calls manually (a telephone must be connected to the machine).
 - <ANS.MACHINE MODE> to receive faxes automatically and route voice calls to an answering machine connected to your machine.

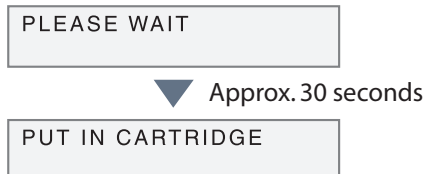
For more details on the different receive modes, refer to p. 8-7 of the *Basic Guide*.

6

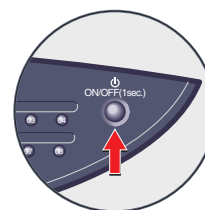
Connect the power cord.



1 Plug the power cord into a socket.



2 When you connect the machine, the Alarm light blinks, and the messages above should appear in the LCD.



3 If nothing appears in the LCD, press [ON/OFF (1 sec.)] to turn on the machine.
• If you need to turn off the machine, press [ON/OFF (1 sec.)] for one second.

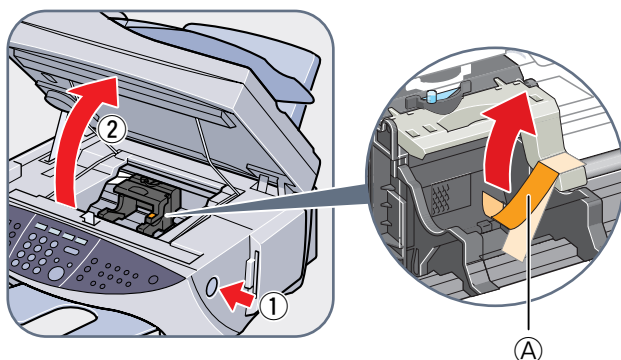
7

Install the printhead.

IMPORTANT

- To turn off the machine, be sure to always press [ON/OFF(1sec.)]. This will ensure that the printhead is capped and prevent it from drying up.
- If you are not using the machine for a long period of time, we recommend that you print (in black and color) or clean the printhead approximately once a month to maintain the printhead in good working condition.

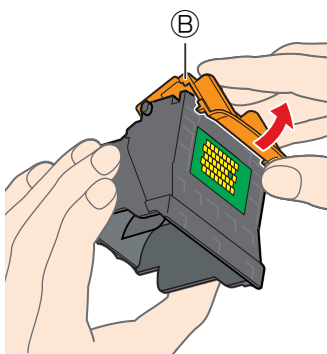
1 Press [Open] ① and lift up the scanning unit ②. Then remove the tape ③.



IMPORTANT

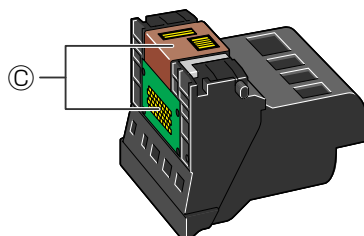
- Do not touch the metal rod or any parts inside the machine.
- Do not turn off the machine when opening the scanning unit.

2 Remove the printhead from its packaging, then remove the orange protective cap ④.



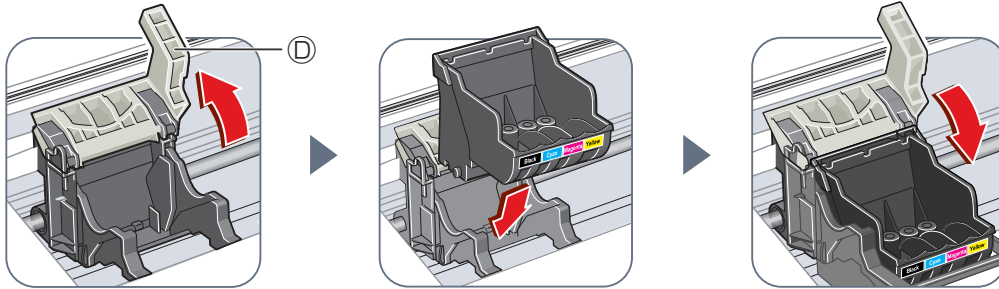
IMPORTANT

- Do not touch the electrical contacts ⑤.



Turn over to
continue

- 3 Raise the lock lever ①, then gently slide the printhead into the holder. Lower the lock lever.



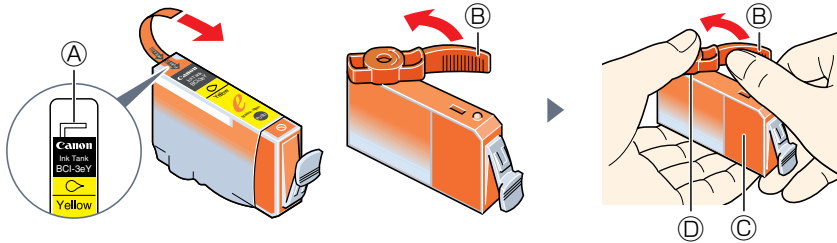
IMPORTANT

- Do not touch the lock lever once the printhead has been installed.

8

Install the ink tanks.

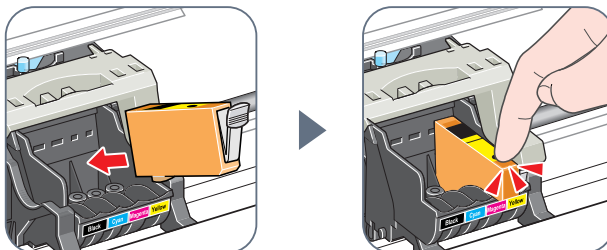
- 1 Start with the yellow ink tank. Pull the orange tape in the direction of the arrow and remove the plastic wrapper so you can see the air hole ①. Turn the ink tank over so that the protective cap ② is facing up. Then hold the ink tank as shown below and remove the protective cap ③.



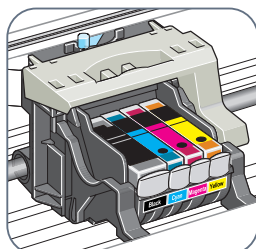
NOTE

- To avoid spilling ink, never press on the long sides of the ink tank ⑤.
- Once you remove the protective cap ③, do not touch the ink port ④.

- 2 Insert the ink tank (label-side up) into the correct slot (refer to the color guide on the printhead). Press down gently on the ink tank **until an audible click is heard**.



- 3 Repeat steps 1 and 2 to install the remaining magenta, cyan, and black ink tanks.



- 4 Close the scanning unit until it locks into place. Be sure to now align the printhead as explained in step 9.

9

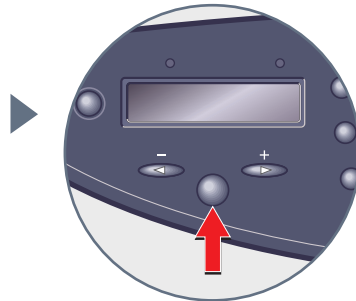
Align the printhead.

NOTE

- If you will be installing the MultiPASS Suite software, you can also align the printhead from the software. For details, see p. 10-8 of the *Basic Guide*.

- 1 When the LCD displays the following, press [Set].

ALIGN PRINT HEAD
PRESS SET KEY



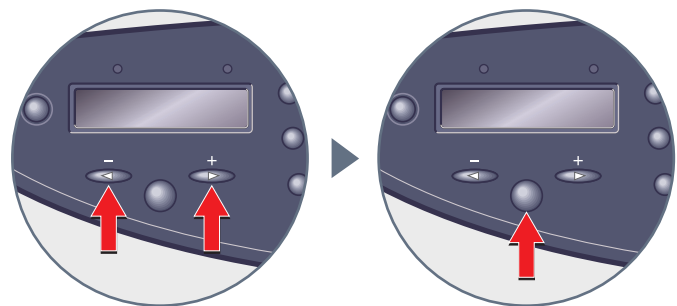
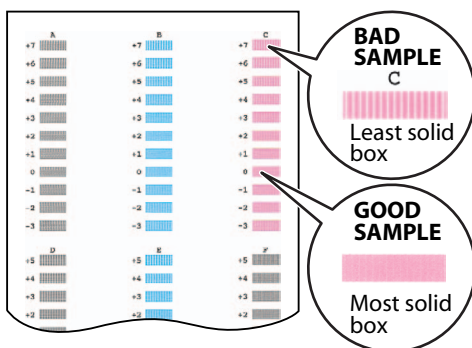
The machine will print a horizontal line pattern, and the LCD will display:

CHANGE H VALUE
A 0

Column A

Value for column A

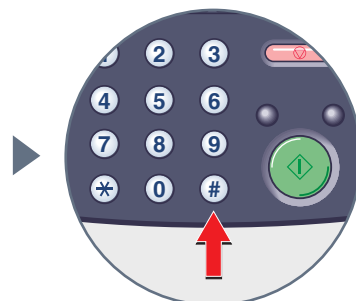
- 2 In column A on the printout, note which box has the most solid image. Note the value next to this box and use [◀] or [▶] on the operation panel to enter it. Then press [Set].



- 3 Repeat step 2 for columns B to F.

- 4 When values for all columns have been entered and the LCD displays the following, press [#] to return to standby mode.

PRINT VERT. PATTERN?
YES=(*) NO=(#)



NOTE

- If streaks appear on the printed surface when you use the machine, perform the vertical printhead alignment. For details, see p. 10-7 of the *Basic Guide*.

10

Install the software.



IMPORTANT

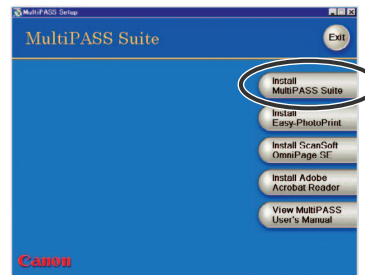
- **DO NOT** connect the USB cable before installing the software.



NOTE

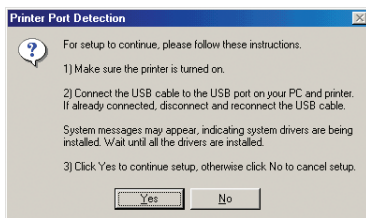
- When installing the software in Windows XP or Windows 2000, log onto the system as a member of the Administrator group.
- If you have previously installed an earlier version of the MultiPASS Suite software (version 4.1 or earlier), you must remove it before installing this version. For details on uninstalling the software, refer to the documentation of the previous version.

- 1 Make sure both your machine and computer are turned on.
- 2 On your computer, close any open applications, including virus checkers.
- 3 Insert the MultiPASS Suite CD-ROM into your CD-ROM drive.
 - The setup program should start automatically. If it does not, double-click [My Computer] in the Windows screen, double-click the CD-ROM icon, then double-click [csplash] or [csplash.exe].
- 4 When the next screen appears, click **INSTALL MULTIPASS SUITE.**

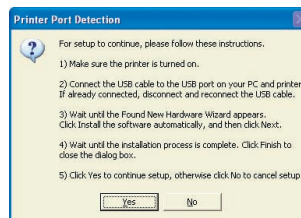


- 5 Follow the on-screen instructions.
- 6 When the message below appears, remove the label (A) from the USB port (B) located on the back of the machine. Then connect a USB cable (C) (not included) to the machine and computer.

Windows 98/Me/2000

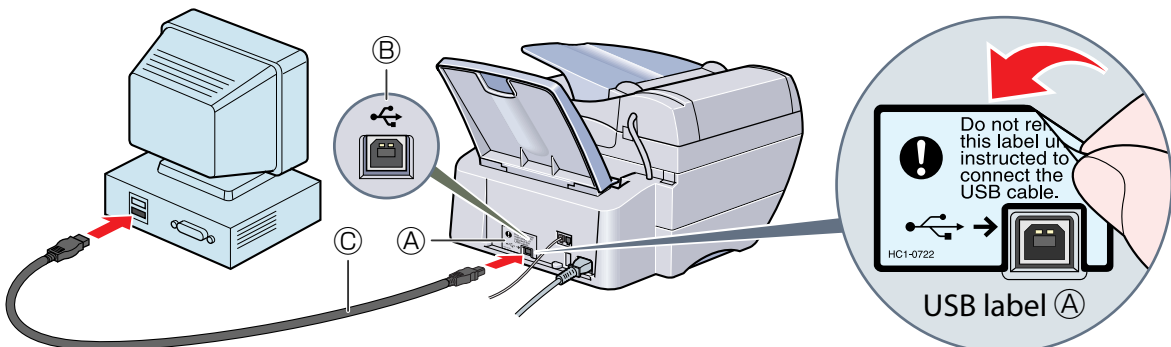


Windows XP

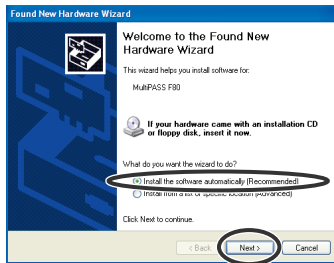


NOTE

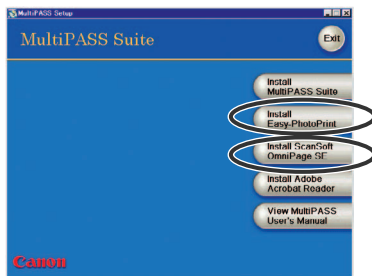
- If you cannot continue with the installation after connecting the USB cable, refer to p. 11-1 of the *Basic Guide*.



- Windows 98/Me/2000 users: Once connected, the USB driver will automatically be installed.
- Windows XP users: Once connected, the “Found New Hardware Wizard” dialog box appears. Click [Install the software automatically], then click [Next].



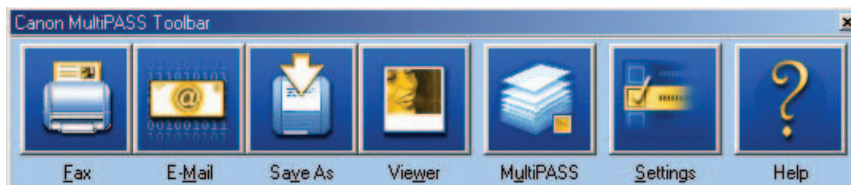
7 Follow the on-screen instructions to complete installation.



If you wish to install any other software included in the CD-ROM, click [Install Easy-PhotoPrint] or [Install ScanSoft OmniPage SE].

8 When installation is complete, restart your computer before using the MultiPASS Suite software.

Once installed, the MultiPASS Toolbar will be displayed on the desktop:



For details on using the MultiPASS Toolbar, see p. 9-1 of the *Basic Guide*.

NOTE

- Remember to register your machine to ensure product support. The serial number is located on the back of the machine.

11

Congratulations! You have now completed your machine setup.

Where to from here...

Once you have completed all steps in this Set-Up Sheet, refer to the *Basic Guide* for basic operation instructions of all functions of your machine.

If after reading the Basic Guide you require more detailed information, refer to the *Comprehensive Guide* or *Software Guide* (included in the CD-ROM).

Part no. HT3-2116-000-V.2.0

© 2002 Canon Inc.

Canon, MultiPASS, and BCI are trademarks of Canon Inc.

All other products and brand names are registered

trademarks or trademarks of their respective owners.

Specifications subject to change without notice.

PRINTED IN THAILAND