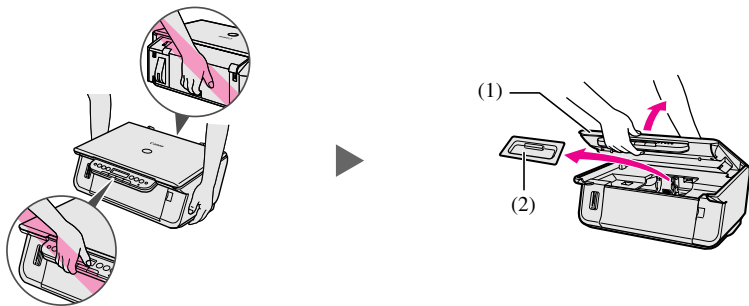


1 Unpack and setup the machine.

- 1 Carefully remove all items from the box.
- 2 Remove the protective material.



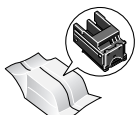
- 3 Place the machine on a flat surface.
- 4 Remove all shipping tape and the protective sheet.
- 5 Lift the Scan Unit (1) until it locks into place, and remove the packing material (2) from the Print Head Holder.



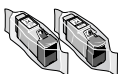
- Be sure to hold the machine by the side. Do not lift the machine by grasping the Paper Support Extension or the Operation Panel.

► Check the contents.

- Machine
- Print head



- Power cord
- Ink tanks
BCI-24 Black
BCI-24 Color



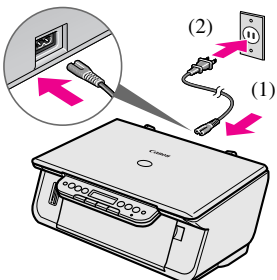
- Safety Instructions
- Quick Start Guide

The Setup CD-ROM contains the MP Drivers, as well as the electronic manuals *User's Guide*, *Software Guide* and *Photo Application Guide*. Please read these guides.

- A printer cable is not included. You must purchase a USB cable (less than 10 ft./3 m) to connect your machine to a computer.
- Please note that the items included with your machine may vary depending on the country of purchase.

2 Connect the power cord.

- 1 Connect the power cord.

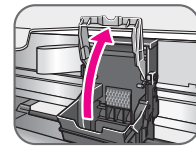
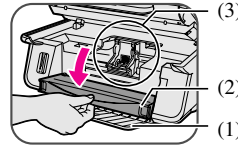


PLEASE WAIT

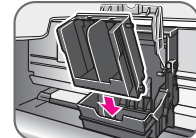
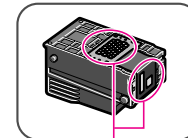
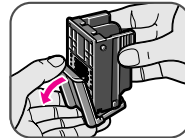
- 2 If the message <PUT IN CARTRIDGE> appears, go to Step 3, "Install the print head."

3 Install the print head.

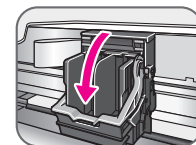
- 1 Lift the Scan Unit until it locks into place.
- 2 Open the Paper Output Tray (1).
- 3 Open the Inner Cover (2).
• The Print Head Holder moves to the center.
Install the print head here (3).
- 4 Raise the Lock Lever.



- 5 Remove the protective cap.
- 6 Insert the print head.
• Do not press it down.

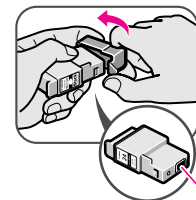


- 7 Lower the Lock Lever until it locks into place.



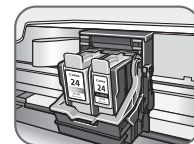
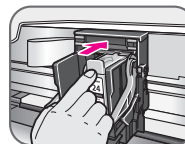
4 Install the ink tanks.

- 1 Remove the orange protective cap.



- 2 Insert the ink tanks.

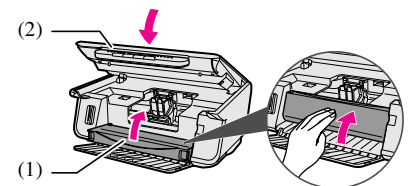
- Insert the black ink tank into the right slot, and the color ink tank into the left slot.



▲ IMPORTANT

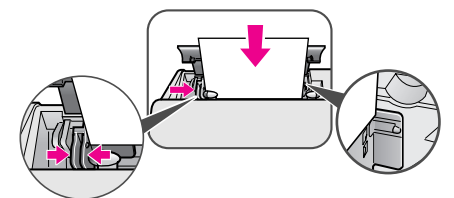
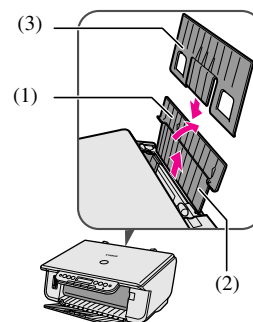
- For correct printer operation, make sure ink tanks are secure in slots.

- 3 Close the Inner Cover (1) and the Scan Unit (2).
- 4 If the LCD displays messages asking if you replaced the ink tanks, press [◀] repeatedly to complete the installation.



5 Load the paper.

- 1 Open the Paper Support (1) and pull up the Paper Support Extension (2) until it stops.
• If you are loading the legal-size paper, set the Attachment (3) to the Paper Support.
- 2 Load the paper with the print side face up.
• Ensure the paper stack does not exceed Paper Limit Mark.
- 3 Pinch and adjust the Paper Guide to the width of the stack.



Setup is complete.

If you are connecting the machine to a computer for use, see the reverse side for instructions on installing the software.

6 Install the software.

▲ IMPORTANT

- Close any open software applications, including anti-virus applications prior to installing the software.

There are two ways you can install the software: Easy Install or Custom Install.
Easy Install is recommended for the first-time users, and Custom Install is for the advanced users.
This sheet explains Easy Install only.

Windows

▲ IMPORTANT

- Do not connect the USB cable until Step 3, "Connect the USB cable."

The following software programs are included on the Setup CD-ROM:

- On-screen Manual
- Easy-WebPrint
- ScanSoft OmniPage SE
- MP Drivers
- Easy-PhotoPrint
- e-reg
- MP Navigator
- ArcSoft PhotoStudio

▲ IMPORTANT

- If you have an earlier version of the MultiPASS Suite software installed on your computer, uninstall this version before installing the new version. For instructions on uninstallation, see the guides for that version of MultiPASS Suite.
- When installing the software in Windows 2000, you must log on as Administrator or have Administrator privileges, and when installing the software in Windows XP, you must log on as Administrator.

► Step 1 Prepare the Setup CD-ROM.

1 Turn ON your computer, and start Windows.

2 Insert the Setup CD-ROM into the CD-ROM drive.

- The setup program should automatically run. If the setup program does not automatically run, click [My Computer], then double-click [Msetup4.exe] on the Setup CD-ROM.

▲ IMPORTANT

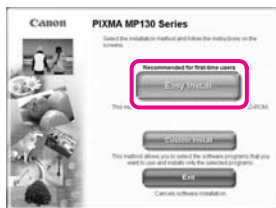
- If you see the "Found New Hardware Wizard", the USB cable is connected. Disconnect the USB cable then click Cancel.



► Step 2 Install the software.

1 Click [Easy Install], then click [Install].

- To view the descriptions of the software programs, click [i] icon.



2 Click [Yes].

- Installation begins. Follow the on-screen instructions to install the software.



3 Click [Continue].

- Follow the displayed instructions.



4 Click [Exit].

- If prompted, restart your computer.



- When the Registration window appears, follow the on-screen instructions to ensure product support. The serial number is located on the back of the printer.

► Step 3 Connect the USB cable.

- Make sure your machine and computer are turned ON.
- When connecting the USB cable, the computer will automatically detect and install necessary information.
- In Windows 2000, the machine may not be set as the default printer.

Macintosh

The following software programs are included on the Setup CD-ROM:

- On-screen Manual
- Easy-PhotoPrint
- e-reg
- MP Drivers
- ArcSoft PhotoStudio
- MP Navigator
- ScanSoft OmniPage SE

▲ IMPORTANT

- When installing the software, you must log on as a user with Administrator privileges.
- Mac OS X Classic users: This machine does not support the Mac OS X Classic environments.

► Step 1 Connect the USB cable.

- Make sure the machine is turned ON.

► Step 2 Prepare the Setup CD-ROM.

1 Turn ON your computer, and start Mac OS X.

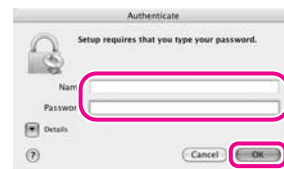
2 Insert the Setup CD-ROM into the CD-ROM drive.

- The setup program should automatically run. If the setup program does not automatically run, double-click [Setup] on the Setup CD-ROM, or click [Setup] on the Setup CD-ROM and click [File] menu and then select [Open].

► Step 3 Enter the name and password for an Administrator Account.

1 Enter the name for Administrator.

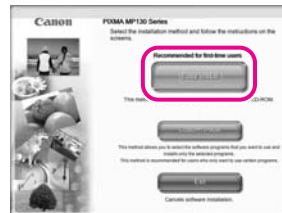
2 Enter the password and then click [OK].



► Step 4 Install the software.

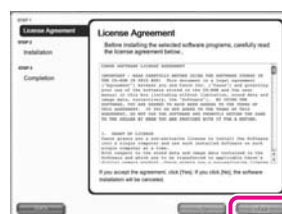
1 Click [Easy Install], then click [Install].

- To view descriptions of the software programs, click the [i] icon.



2 Click [Yes].

- Installation begins. Follow the on-screen instructions to install the software.



3 Click [Continue].

- Follow the displayed instructions.



4 Click [Restart] to restart your computer.



- When the Registration window appears, follow the on-screen instructions to ensure product support. The serial number is located on the back of the printer.

You now have completed installation of the software.