

READ THIS SHEET FIRST

Thank you for purchasing the Canon PIXMA MP780/750. To prepare your machine for use, please follow these Easy Setup Instructions before referring to any other documentation.



IMPORTANT

Do not connect the USB cable until after the software is installed. See the rear side of this sheet for details.

1 Unpack and install the machine.

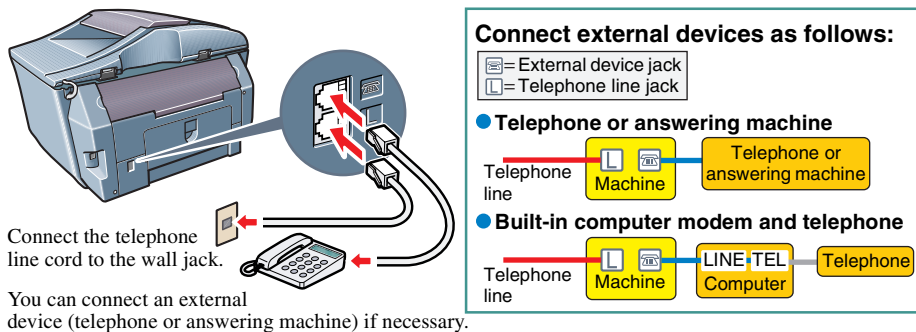
Check the package contents.

- Machine
 - MP780
 - MP750
 - Ink tanks
 - Black BCI-3eBK
 - Black BCI-6BK
 - Cyan BCI-6C
 - Magenta BCI-6M
 - Yellow BCI-6Y
 - Power cord
 - Print head
 - Telephone line
 - Easy Setup Instructions
 - Quick Start Guide
 - Setup CD-ROM
- The Setup CD-ROM contains the MP Drivers, as well as the *User's Guide*, *Software Guide* and *Photo Application Guide* in electronic format. Please read these guides.

- In this sheet, illustrations of MP780 are shown.
- A printer cable is not included. You must purchase a USB cable (less than 16 3/8 ft.) to connect your machine to a computer.

2 Connect the telephone line. (MP780 model only)

Connect the telephone line and any necessary external device.
For details, see the *Quick Start Guide*.



3 Connect the power cord.

1 Connect the power cord.

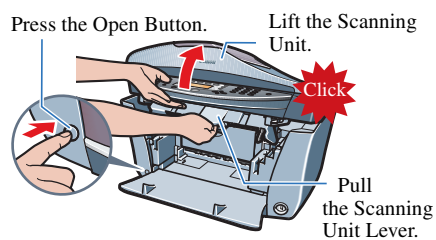
- Connect one end of the power cord to the rear of the machine.
- Connect the other end to the AC outlet.

2 If the message <PUT IN CARTRIDGE> appears, go to Step 4, "Install the print head."

4 Install the print head.

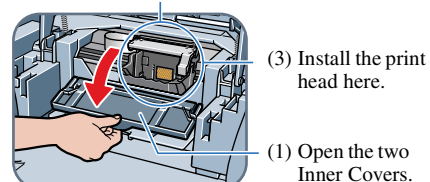
1 Press the Open Button to open the Paper Output Tray. Then lift the Scanning Unit until it locks into place.

IMPORTANT
Be sure to hold the Scanning Unit firmly with one hand.

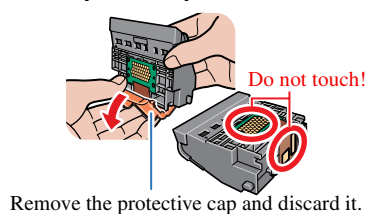


2 Open the two Inner Covers.

(2) The Print Head Holder moves to the center.

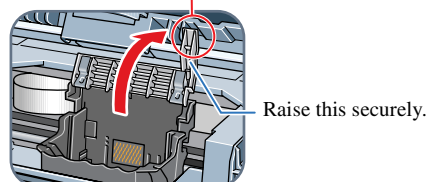


4 Prepare the print head.

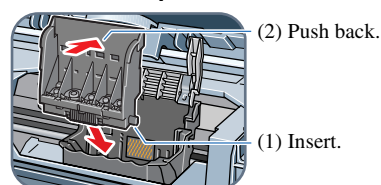


3 Raise the lock lever.

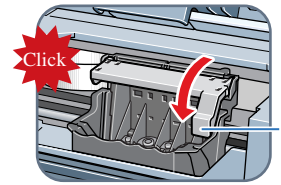
Touch only the lock lever!



5 Insert the print head.



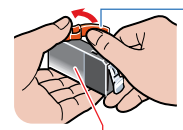
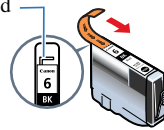
6 Lower the lock lever.



5 Install the ink tanks.

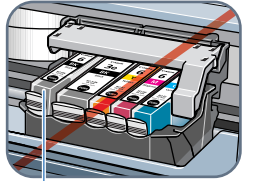
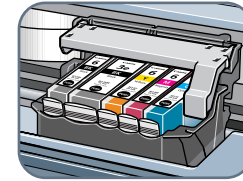
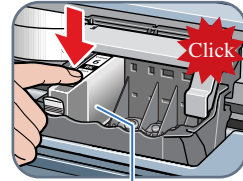
1 Prepare the ink tanks.

Remove the orange-colored protective film. If it is not removed completely, problems with printing may occur.

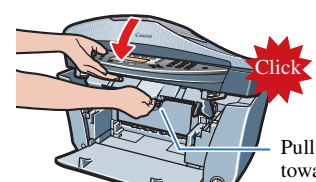
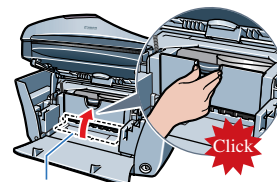


Do not touch!

2 Insert the ink tanks.



3 Close the Inner Covers and the Scanning Unit.



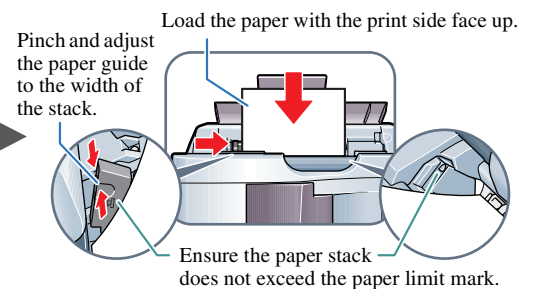
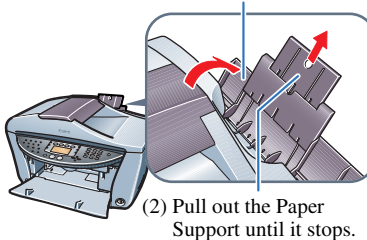
IMPORTANT
Be sure to hold the Scanning Unit firmly with one hand.

6 Load the paper.

1 Open the Auto Sheet Feeder.

2 Load two sheets or more of letter-size plain paper.

(1) Open the Auto Sheet Feeder.

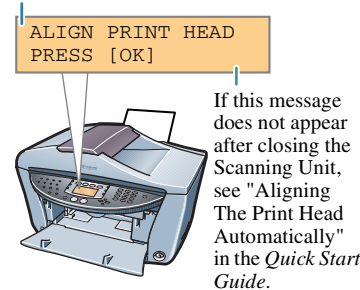


7 Align the print head from the Operation Panel.

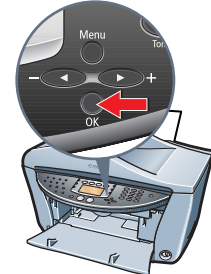
Be sure to align the print head to ensure print quality.

1 Press [OK] to start print head alignment.

(1) This message appears.



(2) Press [OK].



(3) The machine will print the print head position pattern and automatically align the print head.



If the printed pattern matches the illustration, print head alignment is complete.

You can change the language displayed on the LCD.

For details, see "Selecting The Language For The LCD" in the *Quick Start Guide*.

You have completed installation and alignment.

If you are connecting the machine to a computer for use, see the rear side of this sheet for instructions on installing the software.

Install the software.

Select Easy Install in order to install the application software, electronic manual and MP drivers. Select Custom Install in order to choose the options you would like to install. This sheet explains Easy Install Only.

▲ IMPORTANT

- If you have an earlier version of the MultiPASS Suite software installed on your computer, uninstall this version before installing the new version. For instructions on uninstallation, see the guides for that version of MultiPASS Suite.
- Close any open software applications, including virus checkers, prior to installing the software.

Windows

The following software programs are included on the Setup CD-ROM:

On-screen Manual	MP Drivers	MP Navigator
Easy-PhotoPrint	Easy-WebPrint	ScanSoft OmniPage SE
Presto! PageManager		

▲ IMPORTANT

- Do not connect the USB cable until Step 3, "Connect the USB cable."
- Before installing the software in Windows 2000, you must log on as Administrator or a user with Administrator privileges, and before installing the software in Windows XP, you must log on as Administrator.

Step 1: Prepare the Setup CD-ROM and Get Ready to Install.

- 1 Turn ON your computer, and start Windows.
- 2 Insert the Setup CD-ROM into the CD-ROM drive.

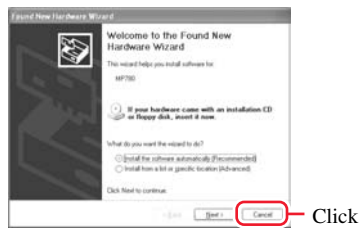
- The setup program should automatically run. If the setup program does not automatically run, click [My Computer], then double-click [setup] on the Setup CD-ROM.

▲ IMPORTANT

If the following screen appears, the USB cable is connected.


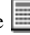
- Perform the following steps.

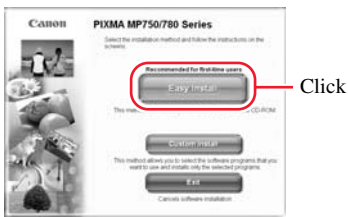
1. Disconnect the USB cable.
2. Click [Cancel].



Step 2: Install the software.

- 1 Click [Easy Install], then click [Install].

- To read descriptions of the software programs, click the  icon.
- To read restrictions of the software programs, click the  icon.



- 2 Click [Yes].

- Installation begins.



- 4 Click [Exit].

- If prompted to, restart your computer.



Step 3: Connect the USB cable.

- Make sure both your machine and the computer are turned ON.
- When you connect the USB cable, the computer will automatically detect and configure any necessary settings.



In Windows 2000, the machine may not be set as the default printer.

Macintosh

The following software programs are included on the Setup CD-ROM:

On-screen Manual	MP Drivers	MP Navigator
Easy-PhotoPrint	ScanSoft OmniPage SE	

▲ IMPORTANT

- Do not connect the machine to Mac OS 9 or Mac OS X Classic environments since they are not supported.
- Before installing the software, you must log on as a user with Administrator privileges.

Step 1: Connect the USB cable.

- Make sure the machine is turned ON.

Step 2: Prepare the Setup CD-ROM.

- 1 Turn ON your computer, and start Mac OS X.
- 2 Insert the Setup CD-ROM into the CD-ROM drive.
- 3 Double-click [Setup] on the Setup CD-ROM, or click [Setup] on the Setup CD-ROM and click [File] menu and then select [Open].



Step 3: Enter the name and password for an Administrator Account.

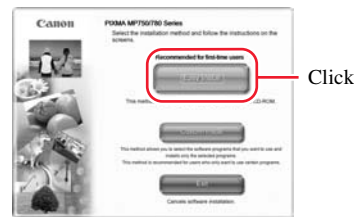
- 1 Enter the name for Administrator.
- 2 Enter the password and then click [OK].



Step 4: Install the software.

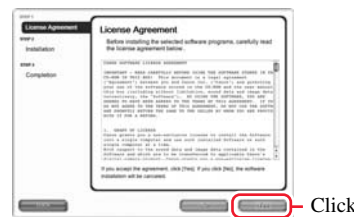
- 1 Click [Easy Install], then click [Install].

- To read descriptions of the software programs, click the  icon.
- To read restrictions of the software programs, click the  icon.



- 2 Click [Yes].

- Installation begins.

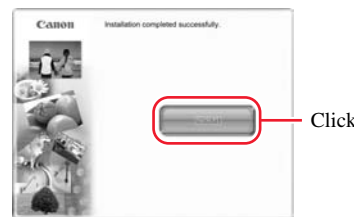


- 3 Click [Continue].

- Follow the displayed instructions.



- 4 Click [Restart] to restart your computer.



[MP780 FAX] is shown in the Name list, but you cannot add [MP780 FAX]. You can fax the document with the current print settings applied to it using the computer's internal modem. You cannot send faxes from your computer via the machine.