



## Unpack the Machine

- Please confirm the included items against the illustration printed on the lid of the packing box.
- A USB cable is necessary to connect the machine with your computer.

QT5-0669-V01

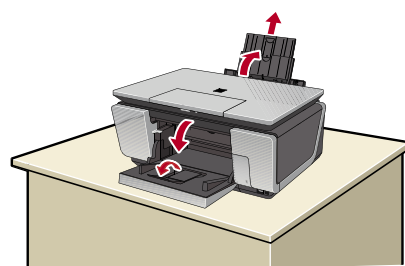
## 1 Prepare the Machine

- Place the machine on a flat and horizontal surface, and do not place any objects in front of the machine. Open the Sheet Feeder Cover, and then pull the Paper Support. Open the Paper Output Tray, and then open the Output Tray Extension.

**Caution**  
Before turning on the machine, remove all of the shipping tapes.

**Important**  
Do not connect the USB cable until after the software is installed.

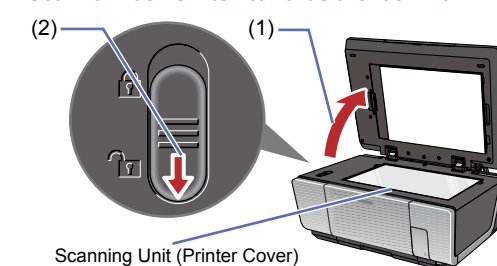
**Note**  
To open the Paper Output Tray, put your finger on the top of the tray and open it gently.



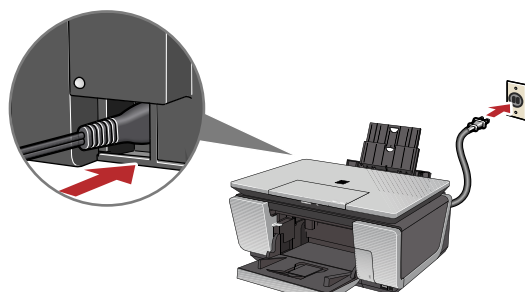
- Unlock the Scanning Unit (Printer Cover).

- Open the Document Cover.
- Move the Scanner Lock Switch towards the release mark to unlock the Scanning Unit (Printer Cover).

**Caution**  
• Make sure to unlock the Scanning Unit (Printer Cover) before turning the machine on.  
• Before transporting the machine, always lock the Scanning Unit (Printer Cover) by moving the Scanner Lock Switch towards the lock mark.

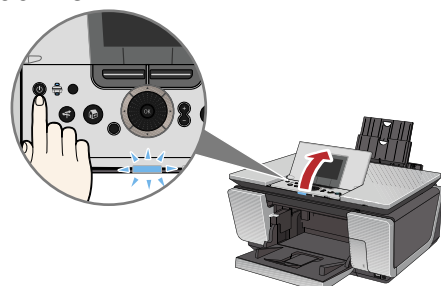


- Plug the power cord in the back of the machine and connect the other end to the wall outlet.

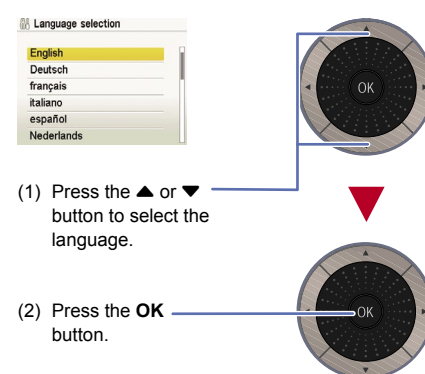


**Important**  
Make sure that the Document Cover is closed.

- Open the Operation Panel, then press the **ON/OFF** button to turn on the machine.



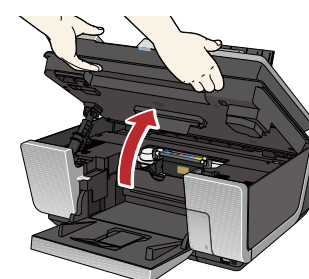
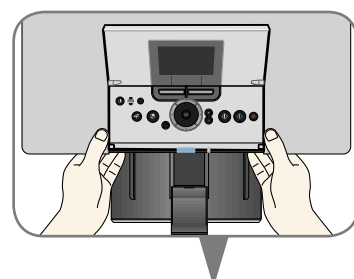
- Use the **▲** or **▼** button on the Operation Panel to select the language for the LCD, then press the **OK** button.



**Important**  
If an unintended language is displayed on the LCD, press the Back button to return to the Language selection screen.

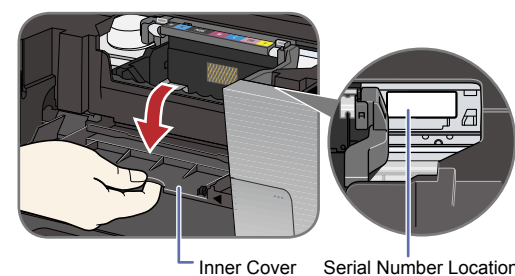
Once the message "Install the print head and set the ink tank." appears, go to 6.

- Open the Scanning Unit (Printer Cover) until it locks into place. The Print Head Holder moves to the center.



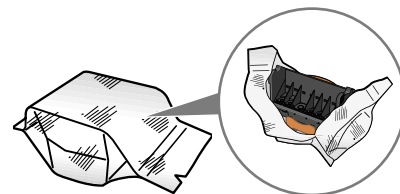
**Important**  
• For your safety, always firmly grip the areas illustrated when opening the Scanning Unit (Printer Cover).  
• If the Document Cover is opened, you cannot open the Scanning Unit (Printer Cover). Be sure to open the Scanning Unit (Printer Cover) and the Document Cover at the same time.

- Open the Inner Cover. Write down the serial number located inside the machine. You will need this to register your product.



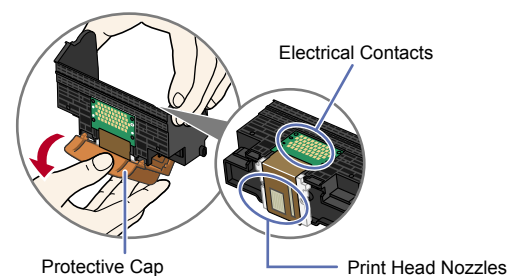
## 2 Install the Print Head

- Remove the Print Head from its package.



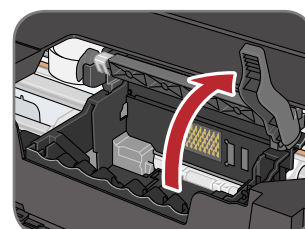
**Caution**  
There may be some transparent or light blue ink on the inside of the bag the print head comes in, or the inside of the protective cap - this has no effect on print quality. Be careful not to get ink on yourself when handling these items.

- Remove the orange protective cap from the Print Head and discard it.

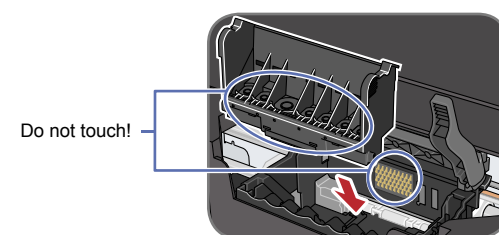


**Note**  
Do not touch the Print Head nozzles or the electrical contacts.

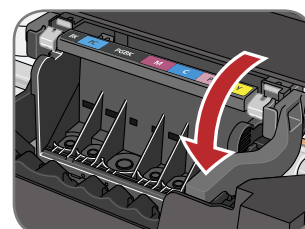
- Firmly raise the Print Head Lock Lever until it stops. The Print Head Lock Lever may feel heavy.



- Insert the Print Head.



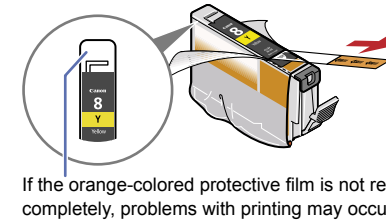
- Lower the Print Head Lock Lever carefully.



**Important**  
If the Scanning Unit (Printer Cover) is left open for more than 10 minutes, the Print Head Holder moves to the right. Close and reopen the Scanning Unit (Printer Cover) to return the Holder to the center.

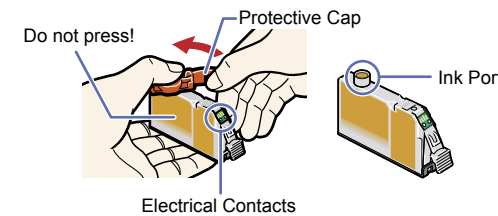
## 3 Install the Ink Tanks

- Peel back the orange tab completely and remove the plastic wrapper from the ink tank.



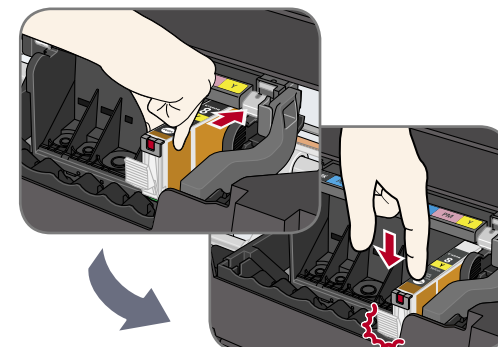
If the orange-colored protective film is not removed completely, problems with printing may occur.

- Twist off and discard the orange protective cap located on the bottom of the ink tank.

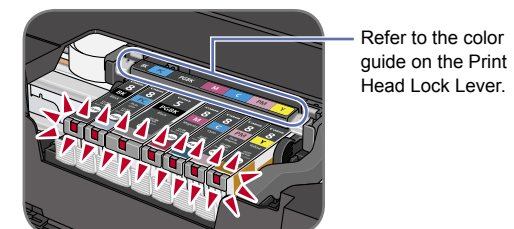


**Important**  
• Do not touch the electrical contacts.  
• Do not touch the ink port.

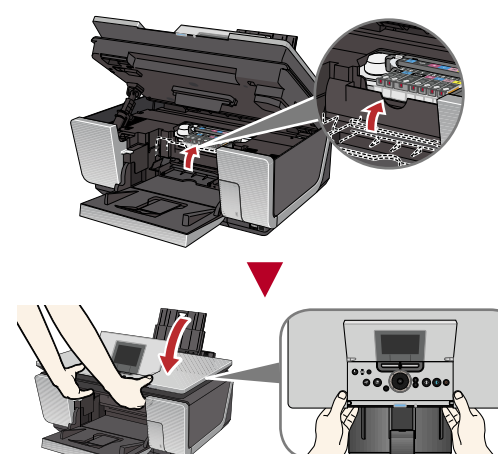
- Insert the ink tank into the right-hand slot and press the **OK** mark on the ink tank until it clicks into place.



- Make sure the ink lamp lights red.



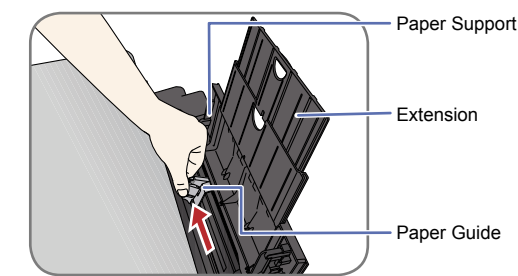
- Close the Inner Cover and the Scanning Unit (Printer Cover).



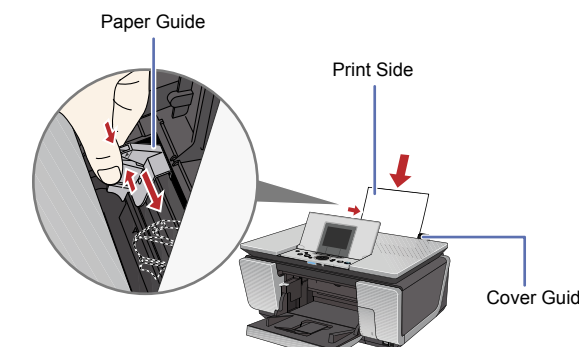
**Important**  
• For your safety, always firmly grip the areas illustrated when closing the Scanning Unit (Printer Cover).  
• The machine starts operating. Wait about 2 minutes until the machine stops making noise.

## 4 Align the Print Head

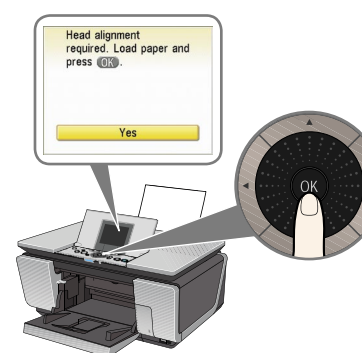
- Pinch the Paper Guide and slide it to the left end.



- Load a sheet of letter- or A4-sized blank paper in the Auto Sheet Feeder, align the paper with the right side of the Cover Guide, then slide the Paper Guide against the paper stack.

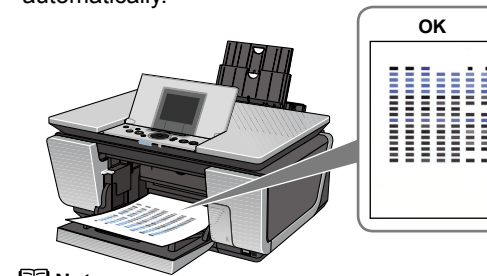


- Make sure that **Yes** is selected in the message requesting head alignment, then press the **OK** button.



**Note**  
Print Head alignment takes about 6 minutes to complete. Do not start another operation here.

The pattern is printed. And Print Head is aligned automatically.



**Note**  
• The pattern is printed in black and blue.  
• When Automatic Print Head Alignment cannot be executed correctly, the message "Auto head align has failed." is displayed on the LCD. Refer to "Error Message is Displayed on the LCD" in the User's Guide on-screen manual.

Hardware setup and Print Head alignment is complete.



### Easy-Scroll Wheel

Turn the Easy-Scroll Wheel left or right to easily select a menu or a setting item. For details, refer to "Basic Operation for the Operation Panel" in the Quick Start Guide.

\* You can also use the **▲**, **▼**, **◀**, or **▶** button to select.

### Cassette

For information on how to load paper in the Cassette, refer to "Loading Paper in the Cassette" in "Loading Printing Paper" of the Quick Start Guide.



Windows® MP Drivers Installation

Windows

- Note**
- The screens below refer to Windows XP Service Pack 2 installation. Screens may vary depending on the operating system you are using.
  - For Windows XP or Windows 2000, log on to Windows as a member of the Administrators group before continuing.
  - Before installing the driver, disable all anti-virus programs and automatically loading programs.

1 Turn off the machine.

- (1) Press the **ON/OFF** button.
- (2) Make sure that the **POWER** lamp stops flashing.

2 Turn the computer on and start Windows.

- Important**  
If you see the **Found New Hardware Wizard**, remove the USB cable. Click **Cancel** to quit the screen. Next, turn off the machine. Then proceed from step 3 to install the MP Drivers.



3 Insert the Setup CD-ROM. The setup program should run automatically.

- Note**  
The setup program should run automatically. If the installer in the CD-ROM does not run automatically, click **Start** and select **My Computer**, then double-click the **CD-ROM** icon.

4 When the main menu appears, click **Easy Install**.



- Note**
- Select **Easy Install** in order to install the MP Drivers, on-screen manuals, and application software. Select **Custom Install** in order to choose the options you would like to install.
  - To install Adobe® RGB (1998), click **Custom Install** and follow the on-screen instructions. If you are using Windows Me/98, Adobe RGB cannot be installed.

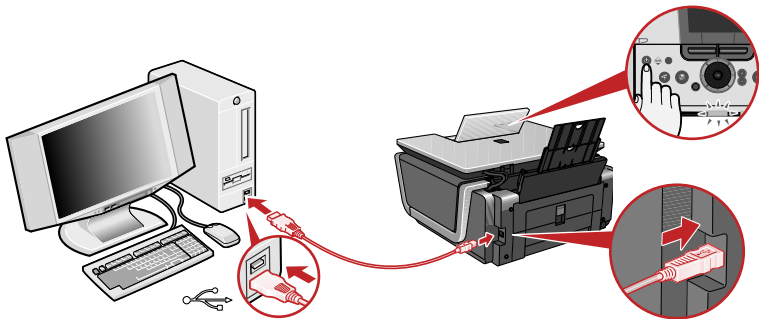
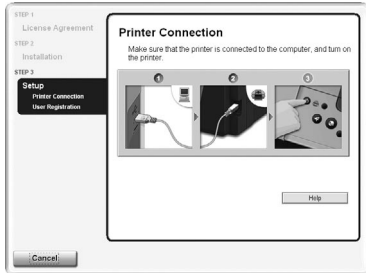
5 When the list of applications to install appears, confirm the contents, click **Install**.

- Note**  
Move the cursor over items to display explanations of each application.

6 Read the License Agreement carefully and click **Yes**. Follow the on-screen instructions to install the software. If a message asking for your confirmation to restart your computer appears, click **OK**.

7 When the **Printer Connection** screen appears, connect the machine with a USB cable, then turn the machine on. The software will begin identifying the printer port being used.

- Important**  
If you cannot go to the next procedure after 3 minutes, refer to “Trouble-shooting” instructions in the *User’s Guide* on-screen manual.



8 Follow the on-screen instructions to register your product.

- Note**  
When the **User Registration** screen appears, follow on-screen instructions to register your product. You will need your product serial number, which is located on the inside of the machine. See Step 1- 7 on the front page.

9 When the **Installation completed successfully** screen appears, click **Exit**.



If **Restart** is displayed, make sure that the **Restart the system now (recommended)** check box is selected, then click **Restart**.

Now you have completed installation of the software.

Macintosh® MP Drivers Installation

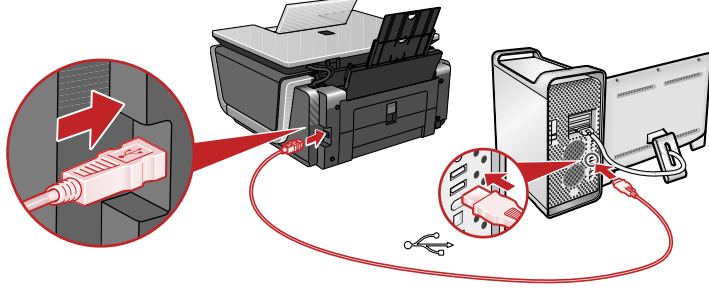
Macintosh

- Important**  
Since Mac® OS 9, Mac OS X Classic environments, or Mac OS X v.10.2.7 or earlier are not supported, do not connect the machine to these.

- Note**
- Use Mac OS X v.10.2.8 to 10.4.x.
  - The screens below refer to Mac OS X v.10.4.x installation. Screens may vary depending on the operating system you are using.
  - Log on as an Administrator before continuing.
  - Before installing the driver, disable all anti-virus programs and automatically loading programs.

1 Connect one end of the USB cable to the computer, the other to the machine.

- Note**  
Make sure the machine is turned on.



2 Turn on your Mac.

3 Insert the Setup CD-ROM.

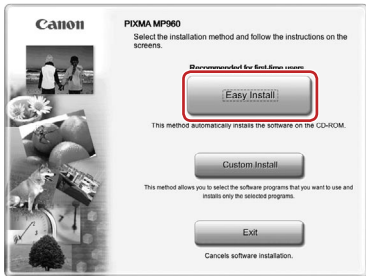
- Note**  
If the **CD-ROM** folder does not open automatically, double-click the **CD-ROM** icon on the desktop.

4 Double-click the **Setup** icon.

5 When the **Authenticate** screen appears, enter your administrator name and password. Click **OK**. If you do not know your administrator name or password, click **?**, then follow the on-screen instructions.



6 When the main menu appears, click **Easy Install**.



- Note**  
Select **Easy Install** in order to install the MP Drivers, on-screen manuals, and application software. Select **Custom Install** in order to choose the options you would like to install.

7 When the list of applications to install appears, confirm the contents, then click **Install**.

- Note**  
Move the cursor over items to display explanations of each application.

8 Read the License Agreement carefully and click **Yes**. Follow the on-screen instructions to install the software.

9 Follow the on-screen instructions to register your product.

- Note**  
When the **User Registration** screen appears, follow on-screen instructions to register your product. You will need your product serial number, which is located on the inside of the machine. See Step 1- 7 on the front page.

10 When the **Installation completed successfully** screen appears, click **Restart**.



The system is restarted automatically.

**\*When using Mac OS X v.10.2.8 to v.10.3.3:**  
Restarting the computer while connected to the machine may cause the machine not to be detected. To resolve this, either unplug the USB cable then plug it back in again, or turn the machine off then back on again.

11 After restarting the computer, start Printer Setup Utility (start Print Center if you are using Mac OS X v.10.2.8) and then check that the printer name you want to use is shown in **Printer List**. If the printer name is not displayed, click **Add** to add the device. For more detailed instructions, refer to the Mac on-screen Help.

Now you have completed installation of the software.