



## Unpack the machine

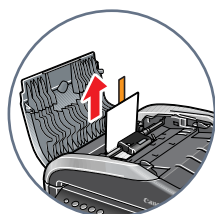
Please confirm bundled thing by the illustration printed on the flapped lid of the packing box.

QT5-0226-V01

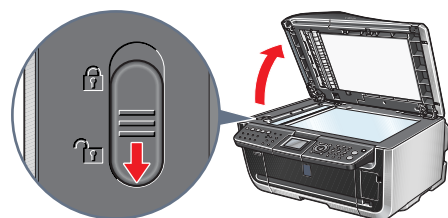
# 1 Prepare the machine

- 1 Remove the shipping tape from the machine.

**▲ IMPORTANT**  
Make sure to remove the protective film from the Feeder Cover.

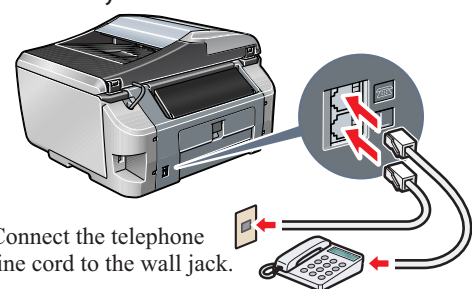


- 2 Unlock the Scanner Lock Switch.



**▲ IMPORTANT**  
• Make sure to unlock it before turning the machine on.  
• Before transporting the machine, always lock the Scanning Unit (Printer Cover) by moving the Scanner Lock Switch towards the lock mark.

- 3 Connect the telephone line and any necessary external device.



Connect the telephone line cord to the wall jack.

You can connect an external device (telephone or answering machine) if necessary.

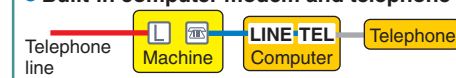
### Connect external devices as follows:

- External device jack
- Telephone line jack

#### • Telephone or answering machine

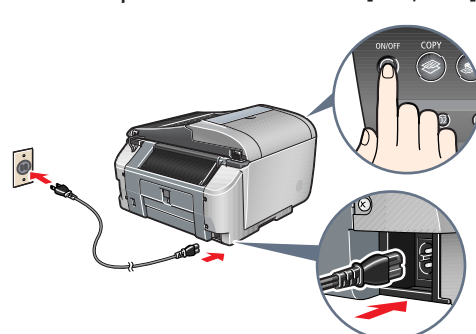


#### • Built-in computer modem and telephone



**▲ IMPORTANT**  
Be sure to use the bundled telephone line cable.

- 4 Plug the power cord into the back of the machine and connect the other end to a power outlet. Press [ON/OFF].



- 5 Use [▲] or [▼] on the Operation Panel to select the language for the LCD, then press [OK].



(1) Press [▲] or [▼] to select the language.

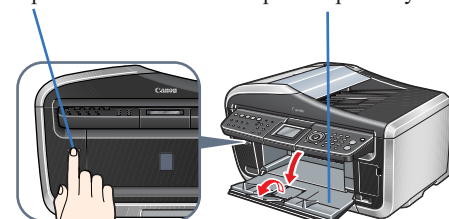
(2) Press [OK].



If the message <Install the print head and set the ink tank.> appears, go to 6.

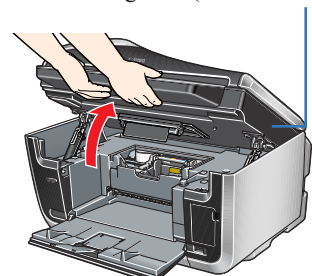
- 6 Press the Open button to open the Paper Output Tray. Open up and set the Paper Output Tray extension by pressing down the hollow on its front side.

Open Button Paper Output Tray



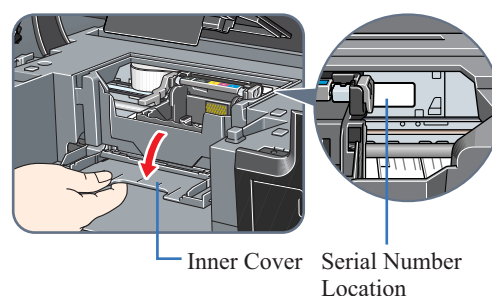
- 7 Open the Scanning Unit (Printer Cover) until it locks into place. The Print Head Holder moves to the center.

Scanning Unit (Printer Cover)



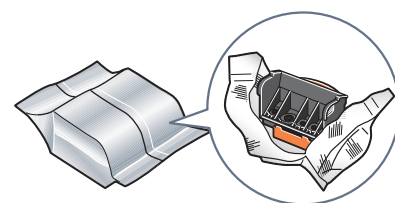
**▲ IMPORTANT**  
Be careful not to touch the buttons on the Operation Panel.

- 8 Open the Inner Cover. Write down the serial number located inside the machine. You will need this to register your products.



# 2 Install the Print Head

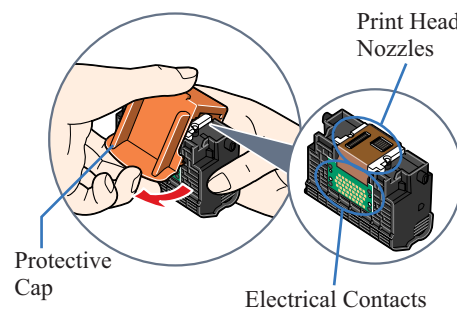
- 1 Remove the Print Head from its package.



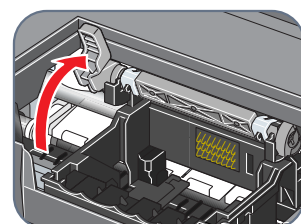
**▲ CAUTION**  
There might be some transparent or light blue ink on the inside of the bag the print head comes in - this has no effect on print quality. Be careful not to get ink on yourself when handling these items.

- 2 Remove the orange protective cap from the Print Head and discard it.

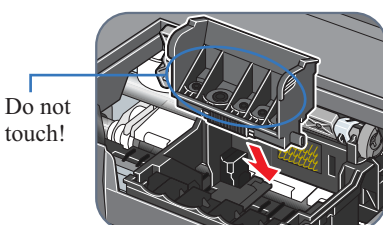
Do not touch the Print Head nozzles and the electrical contacts.



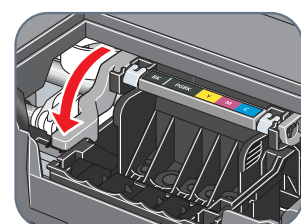
- 3 Firmly raise the Print Head Lock Lever until it stops.



- 4 Insert the Print Head.



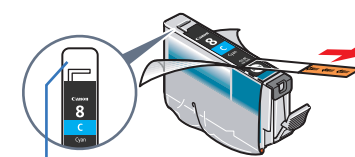
- 5 Lower the Print Head Lock Lever carefully and press it down.



**▲ IMPORTANT**  
If the Scanning Unit (Printer Cover) is left open for more than 10 minutes, the Print Head Holder moves to the right. Close and reopen the Scanning Unit (Printer Cover) to return the Holder to the center.

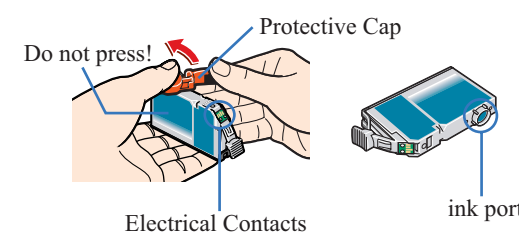
# 3 Install the ink tanks

- 1 Peel back the orange tab completely and remove the plastic wrapper from the ink tank.



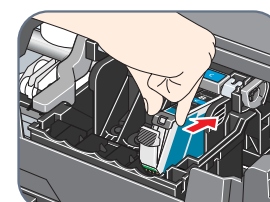
If the orange-colored protective film is not removed completely, problems with printing may occur.

- 2 Twist off and discard the orange protective cap located on the bottom of the ink tank.

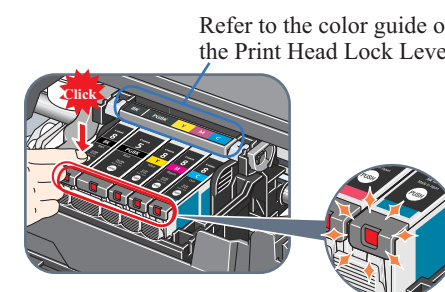


**▲ IMPORTANT**  
• Do not touch the electrical contacts.  
• Do not touch the ink port.

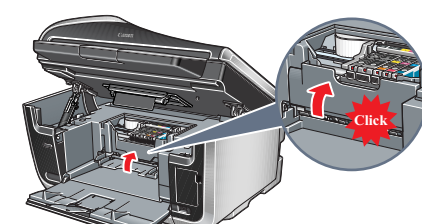
- 3 Insert the ink tank into the right-hand slot.



- 4 Press the [OK] mark on the ink tank until it clicks into place and then its lamp lights red.



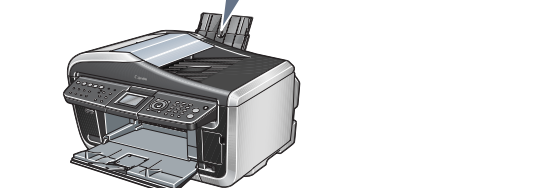
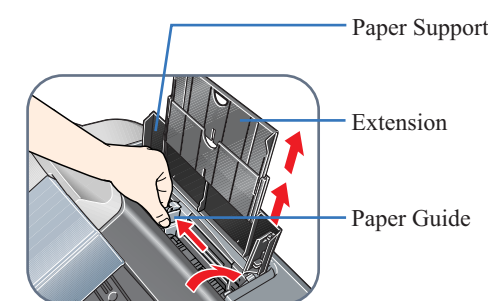
- 5 Close the Inner Cover and the Scanning Unit (Printer Cover).



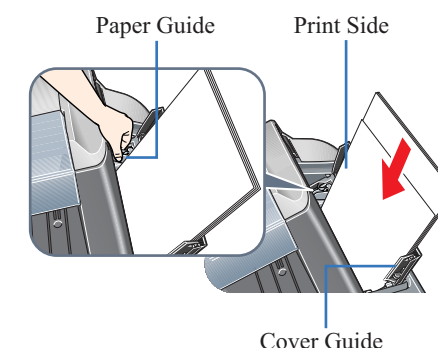
**▲ IMPORTANT**  
For safety, always firmly grip the areas illustrated when closing the Scanning Unit (Printer Cover).

# 4 Align the Print Head

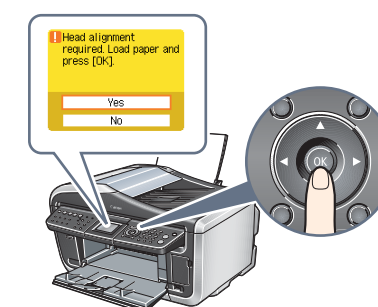
- 1 Open the Paper Support, then pull out the extension. Pinch the Paper Guide and slide it to the left.



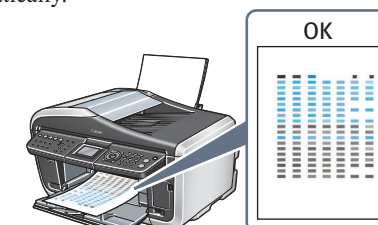
- 2 Load a few sheets of letter- or A4-size paper into the Auto Sheet Feeder, align the paper with the right side of the Cover Guide, then slide the Paper Guide toward the left edge of the paper.



- 3 Ensure that the message requesting head alignment is displayed on the LCD, select <Yes> using [▲] or [▼] and press [OK].



The pattern is printed. And Print Head is aligned automatically.



• The pattern is printed in black and blue.  
• Print Head alignment will take several minutes to complete. Do not start another operation here.  
• When automatic Print Head alignment cannot be executed correctly, the message <Auto head align has failed.> is displayed on the LCD. Refer to "An Error Message is Displayed on the LCD" in the User's Guide.

## Hardware setup and Print Head alignment is complete.

If you are connecting the machine to a computer for use, see the back side of this sheet for instructions on installing the software.

### For fax users

To send a fax, you need to set the telephone line type setting properly on the machine.

You have a dedicated telephone line for fax use only:  
→ FAX only

You receive mainly voice calls and sometimes faxes, and you want to receive faxes manually:  
→ Manual RX

You want to receive voice messages on your answering machine, and receive faxes automatically:  
→ Ans. machine connect.

You want to switch faxes and voice calls automatically:  
→ FAX/TEL auto switch

You have subscribed to a Distinctive Ring Pattern Detection (DRPD) service with your telephone company:  
→ DRPD

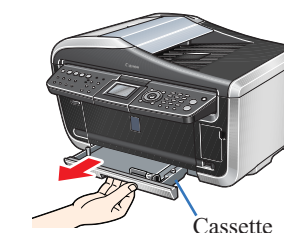
For details about the receive mode setting, refer to "Receiving Faxes" in the User's Guide.

If you are unsure of your telephone line type, contact your telephone company.

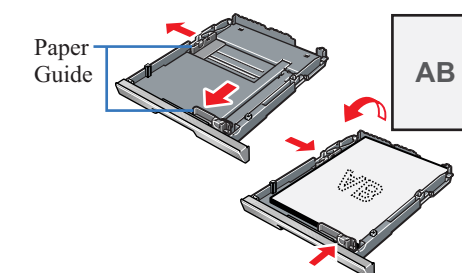
## Cassette Loading

You can load paper in both the Auto Sheet Feeder and Cassette.

- 1 Pull out the Cassette from the bottom of the machine.



- 2 Load the stack of paper into the Cassette with the print side face down. Pinch the Paper Guide and align it to the stack.





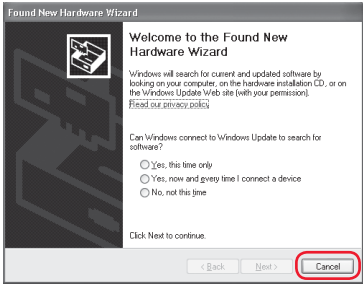
Windows® MP Drivers Installation

Windows

- A printer cable is not included. You must purchase a USB cable (less than 10 ft./3 m) to connect your machine to a computer.
- The screens below refer to Windows XP Service Pack 2 installation. Screens may differ depending on the operating system you are using.
- For Windows XP or Windows 2000, log on to Windows as a member of the Administrators group before continuing.
- Before installing the driver, disable all anti-virus programs and automatically loading programs.
- If you have an earlier version of the MultiPASS Suite software installed on your computer, uninstall this version before installing the new version. For instructions on uninstallation, see the guides for that version of MultiPASS Suite.

- 1 Turn **OFF** the machine.
1. Press the [ON/OFF].
  2. Be sure [COPY] stops flashing and all the lamps on the Operation Panel are off.

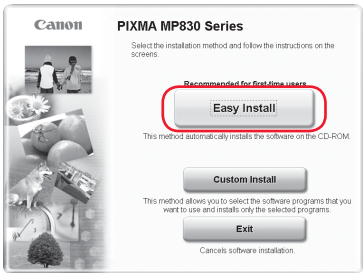
- 2 Turn the computer on and start Windows.
- IMPORTANT**  
If you see the Found New Hardware Wizard, turn off the machine. Remove the USB cable connected to your computer. Next, click Cancel. Then proceed from step 3 to install the MP Drivers.



- 3 Insert the *Setup Software & User's Guide* CD-ROM. The setup program should run automatically.

The setup program should run automatically. If the installer in the CD-ROM does not run automatically, click [Start] and select [My Computer], then double-click the CD-ROM icon.

- 4 When the main menu appears, click [Easy Install] and follow the on-screen instructions.



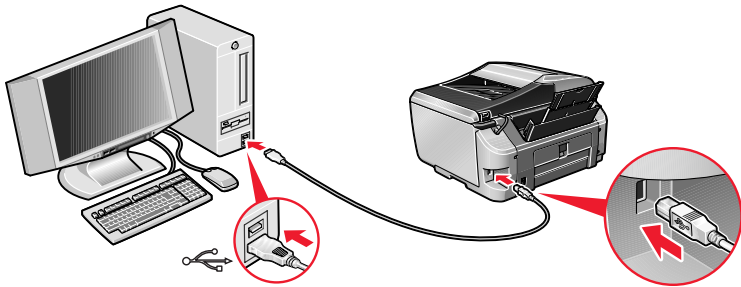
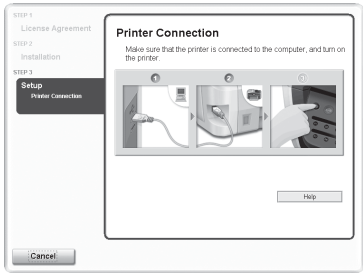
Select [Easy Install] in order to install the MP Drivers, On-screen Manuals, and application softwares. Select [Custom Install] in order to choose the options you would like to install.

- 5 When the list of applications to install appears, verify the contents, click [Install], then follow the instructions on the screen.

Move the cursor over items to display explanations of each application below.

- 6 Read the License Agreement and click [Yes]. Follow the on-screen instructions to install the software. If a message asking for your confirmation to restart your computer appears, click [OK].
- 7 When the Printer Connection screen appears, ensure that the machine is connected to the computer with the USB cable, then turn the machine **ON**. The software will begin identifying the printer port being used.

**IMPORTANT**  
If you cannot proceed to the next procedure after three minuets, refer to “Trouble-shooting” instructions in the *User's Guide*.



- 8 Follow the on-screen instructions to register your product.
- 9 When the Installation completed successfully window appears, click [Exit].



**US Only**  
When the Registration Screen appears, follow on screen instructions to register your product. You will need you product serial number, which is located on the inside of the machine. Refer to Step 1- 8.

If Restart is displayed, click [Restart] to restart the system.

Now you have completed installation of the software.

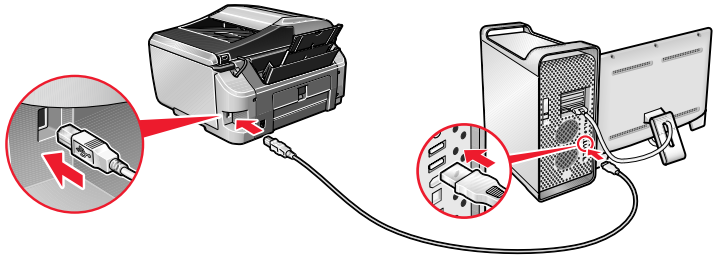
Macintosh® MP Drivers Installation

Macintosh

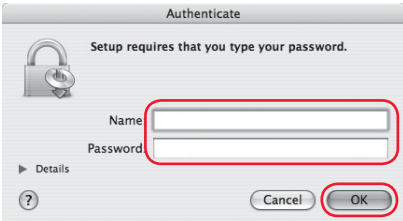
- A printer cable is not included. You must purchase a USB cable (less than 10 ft./3 m) to connect your machine to a computer.
- Use Mac® OS X v.10.2.4 to 10.4.x.
- The screens below refer to Mac OS X v.10.4.x installation. Screens may differ depending on the operating system you are using.
- Log on as a Administrator before continuing.
- Before installing the driver, disable all anti-virus programs and automatically loading programs.

- 1 Connect the end of the USB cable to the computer, the other to the machine.

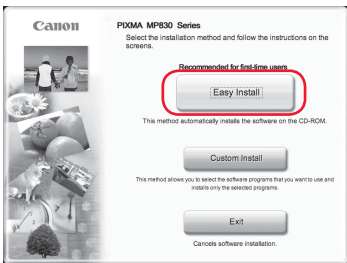
Make sure the machine is turned ON.



- 2 Turn on your Mac.
- 3 Insert the *Setup Software & User's Guide* CD-ROM.
- If the **CD-ROM** folder does not open automatically, double-click the **CD-ROM** icon on the desktop.
- 4 Double-click the Setup icon.
- 5 When the Authenticate screen appears, enter your administrator name and password. Click [OK]. If you do not know your administrator name or password, click ?, then follow the on-screen instructions.



- 6 When the main menu appears, click [Easy Install] and follow the on-screen instructions.

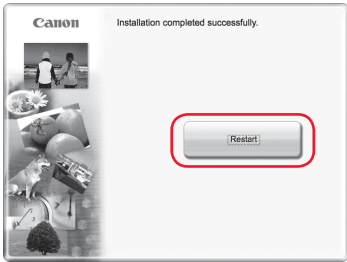


Select [Easy Install] in order to install the MP Drivers, On-screen Manuals, and application softwares. Select [Custom Install] in order to choose the options you would like to install.

- 7 When the list of applications to install appears, verify the contents, click [Install], then follow the instructions on the screen.

Move the cursor over items to display explanations of each application below.

- 8 Read the License Agreement, then click [Yes]. Follow the on-screen instructions to install the software.
- 9 Follow the on-screen instructions to register your product.
- 10 When the Installation completed successfully screen appears, click [Restart].



**US Only**  
When the Registration Screen appears, follow on screen instructions to register your product. You will need you product serial number, which is located on the inside of the machine. Refer to Step 1- 8.

The system is restarted automatically.

**\*When connecting from Mac OS X v.10.3.3 or earlier:**  
Restarting the computer while connected to the machine may cause the machine not to be detected. To resolve this, either unplug the USB cable then plug it back in again, or turn the machine OFF then back ON again.

- 11 After restarting the computer, start Printer Setup Utility (start Print Center when you use Mac OS X v.10.2.x) and then check that the printer name you want to use is shown in [Printer List]. If the printer name is not displayed, press the [Add] button to add the device. For more detailed instructions, refer to the Mac on-screen Help. [MP830FAX] is also displayed in [Printer Name], but it is unable to add [MP830FAX] to [Printer List]. You cannot send faxes via the machine.

Now you have completed installation of the software.