

CANON INC.

30-2, Shimomaruko 3-chome, Ohta-ku
Tokyo 146-8501, Japan

CANON U.S.A., INC.

Digital Home and Personal Systems Division

2995 Redhill Avenue
Costa Mesa, CA 92626, U.S.A.
1-800 OK CANON
<http://www.ccsi.canon.com>

CANON CANADA INC.

6390 Dixie Road, Mississauga
Ontario L5T 1P7, Canada
1-800 OK CANON
<http://www.canon.ca>

CANON LATIN AMERICA, INC.

6505 Blue Lagoon Drive, Suite 325
Miami, Florida 33126, U.S.A.

CANON MEXICANA, S. de R.L. de C.V.

Anillo Periferico Sur No. 4124, Torre Zafiro (II) Colonia
Ex-Rancho de Anzaldo, Piso 5 y 6, Mexico D.F.
Tel. (525) 5490-2000

CANON PANAMA, S.A.

Apartado 7022, Panama 5
Rep. de Panama
Tel. (507) 279-8900

CANON CHILE, S.A.

Ave. Manquehue Norte #1337, Piso 3, Casilla 187-9,
Santiago, Chile
Tel. (562) 366-6600

CANON ARGENTINA, S.A.

Ave. Corrientes 420 (1043)
Buenos Aires, Argentina
Tel. (5411) 432-59800

CANON EUROPA N.V.

P.O. Box 2262 1180 EG Amstelveen,
The Netherlands

CANON (UK) LTD.

Woodhatch, Reigate
Surrey RH2 8BF, United Kingdom
For technical support, please contact Canon Helpdesk.
Helpdesk:
P.O. Box 431, Wallington, Surrey SM6 0XU
TEL: (08705) 143 723
FAX: (08705) 143 340
For sales enquiries: (0121) 666-6262

CANON FRANCE S.A.

17, quai du Président Paul-Doumer
92414 Courbevoie Cedex, France
Tél.01 4199 7777 Fax.01 4199 7951
Hotline: Tél.01 4199 7070

CANON DEUTSCHLAND GmbH

Postfach 528, 47705 Krefeld, Germany
CANON- Hotline-Service
Customer Support: (0 21 51) 349-555
Info-Desk: (0 21 51) 349-566
Mailbox: (0 21 51) 349-577
Telefax: (0 21 51) 349-588

CANON ITALIA S.p.A

Palazzo L, Strada 6,
20089 Milanofiori-Rozzano (MI), Italy
TEL: 02/8248. 1 FAX: 02/8248. 4604
Pronto Canon 02/8249. 2000
<http://www.canon.it>

CANON BENELUX NEDERLAND N.V.

Neptunusstraat 1, 2132 JA Hoofddorp
The Netherlands
Tel: 023-5 670 123 Fax: 023-5 670 124
Helpdesk: 023-5 681 681

CANON BENELUX BELGIUM N.V./S.A.

Bessenveldstraat 7, 1831 Diegem, Belgium
Tel: 02 7220411 Fax: 02 7213274
Helpdesk: 02 7220404

CANON GmbH

Zetschegasse 11, 1232 Wien, Austria

CANON (SCHWEIZ) A.G.

Industriestrasse 12, CH-8305 Dietlikon
Switzerland
Tel: (01) 835 61 61 Fax: (01) 835 68 60
Hotline: 157 30 20

CANON ESPAÑA S.A.

C/Joaquin Costa No 41, 28002
Madrid, Spain
Help Desk: 906.301255
Tel.: 91-5384500 Fax.: 91-4117780

CANON DANMARK

Vasekær 12, DK-2730 Herlev, Denmark
Hotline: 44 88 26 66
<http://www.canon.dk>

CANON NORGE AS

Hallagerbakken 110, Boks 33, Holmlia, 1210 Oslo 12,
Norway
Tlf: 2262 9321 FAX: 2262 0615

CANON SVENSKA AB

Gustav III:s Boulevard 26, S-169 88 Solna, Sweden
Tel 08-744 85 00
Fax 08-744 64 65
<http://www.canon.se>

CANON OY AB

Kornetintie, 3, 00380 Helsinki, Finland
Puhelin: 010 544 20
Helpdesk: 0600-0-22606
(maksu 14,80 mk/min)
Fax: 010 544 4571

CANON SINGAPORE PTE. LTD.

79 Anson Road #09-01/06
Singapore 079906
<http://www.canon-asia.com>

CANON MARKETING SERVICES PTE. LTD.

No. 1, Jalan Kilang Timor
#09-00 Pacific Tech Centre
Singapore 159303
Tel: 65-7998888, Fax: 65-2736786,
Hotline: 65-3342726
<http://www.canon.com.sg>

CANON MARKETING (MALAYSIA) SDN. BHD.

Block D, Peremba Square
Sajjana Resort, Section U2, 40150 Shah Alam
Selangor Darul Ehsan, Malaysia
Tel: 603-7446000, Fax: 603-7446048,
Helpdesk: 603-7446008/9
Enquiry: print&scan@canon.com.my
<http://www.canon.com.my>

CANON MARKETING (THAILAND) CO. LTD.

179/34-45 Bangkok City Tower, 9th-10th Floor
South Sathorn Road, Thungmahamek,
Sathorn, Bangkok 10120, Thailand
Tel: 662-3449999, Fax: 662-3449968
<http://www.canon.co.th>

CANON MARKETING (PHILIPPINES) INC.

Marvin Plaza Building, 2153 Don Chino Rocas Ave,
Makati City, Metro Manila, Philippines
Tel: 632-8126047, Fax: 632-8120067/8109797

CANON INDIA PVT LTD.

Neela Gagan, Mandi Road,
Mehrauli, New Delhi-110030, India
Tel: 91-11-6806572, Fax: 91-11-6807180

CANON HONGKONG CO., LTD.

9/F, The Hong Kong Club Building
3A Chater Road, Central, Hong Kong
TEL: (852) 2739 0802
FAX: (852) 2739 6428

CANON AUSTRALIA PTY. LTD.

1 Thomas Holt Drive, North Ryde, Sydney N.S.W. 2113,
Australia
Info-Line: (02) 9805 2864

CANON NEW ZEALAND LTD.

Fred Thomas Drive, Takapuna
P.O. Box 33-336, Auckland, New Zealand
Info-Line: 0900-522666

ADOBE SYSTEMS INCORPORATED

<http://www.adobe.com>

ARCSOFT, INC.

<http://www.arcssoft.com>

SCANSOFT, INC.

<http://www.scansoft.com>

Canon



Canon Color Image Scanner CanoScan D1 230U/D2400U

Quick Start Guide

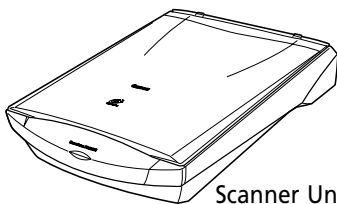
Windows

Macintosh

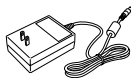
1. Check the Package Contents

Scanner Unit and Accessories

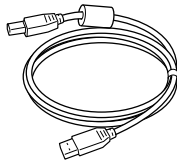
CanoScan D1230U / CanoScan D2400U



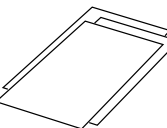
Scanner Unit



AC Adapter



USB Interface Cable



Software and Documents

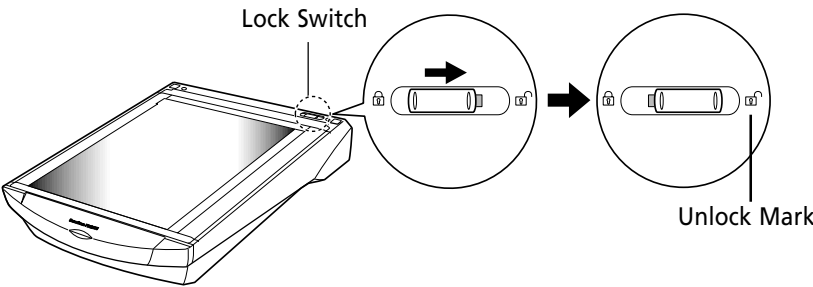
- CanoScan Setup Utility CD-ROM
Contains software programs, PDF manuals, troubleshooting guide, etc.
- Quick Start Guide (this guide)
- Additional documents

* For the model with Film Adapter Unit preinstalled, additional accessories and document are in the package.

2. Unlock the Scanning Unit

Unlock the scanner before plugging in the AC adapter. If it is left locked, a malfunction or problems may occur.

1. Peel the seals off the scanner.
2. Remove the document cover.
3. Push the lock switch toward the unlock mark.



4. Attach the document cover again.

- Windows users → follow the procedures from the next page.
- Macintosh users → follow the procedures from page 9.

System Information

This form is used to record the operating environment of the purchased scanner.
If any problems occur with the scanner, you will need this information when you contact our Customer Support Help Desk. Please make sure to record this and secure it safely.

- When a repair is needed, warranty information is required. Please make sure to record this information and secure it carefully.
- The replacement parts for this equipment have an expiration date of seven years after production ceases. (Replacement parts refer to any part that is required for the optimal operation of the equipment.)

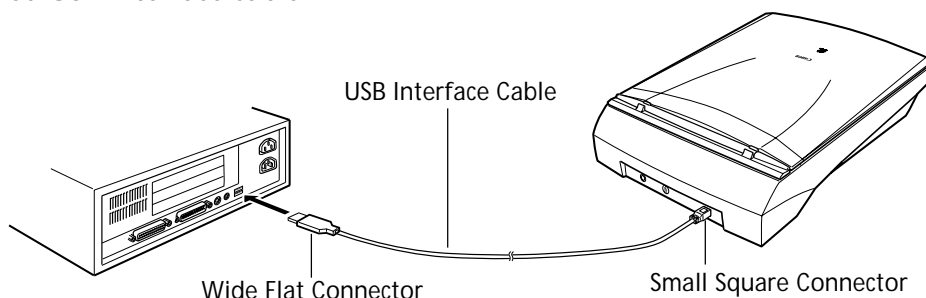
Date of Purchase:		
Dealer:		Tel:
Dealer Address:		
Scanner Model:		CanoScan D1230U/D2400U
Serial Number (displayed on the back of the equipment):		
• About the Computer Used		
Manufacturer:		Model:
CPU:	Clock Speed:	MHz
Memory Capacity (RAM):		MB
Hard Disk Capacity:		MB
Space Available:		MB
OS : Windows <input type="checkbox"/> Me <input type="checkbox"/> 98 <input type="checkbox"/> 2000 Mac OS <input type="checkbox"/> 8.5 <input type="checkbox"/> 8.6 <input type="checkbox"/> 9		
Monitor Type:		Monitor Size: Inches
Printer:		Manufacturer:
Type of Printer:		Printer Resolution: dpi
Installed Virus Protection Program:		
Installed Compression Program:		
On-Board Expansion Cards:		
Attached Peripherals:		
Name of Network Connected:		

Using the Windows Platform

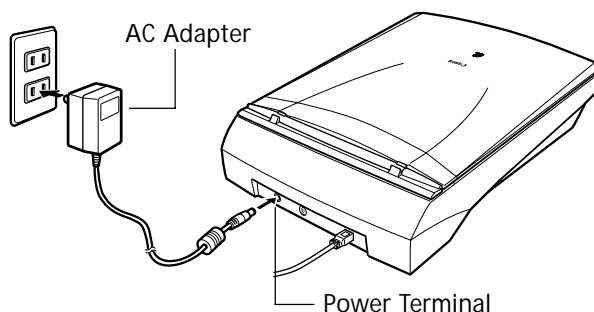
3. Connect the Scanner

Confirm that the power switches for the computer and other connected devices are off.

1. Connect the scanner to the computer with the supplied USB interface cable.



2. Connect the AC adapter to the scanner.



Only use the AC adapter provided with the scanner. Use of other AC adapters may lead to a malfunction.

- The scanner does not have a power switch. The power is activated as soon as the AC adapter is plugged in.
- If you wish to use a Film Adapter Unit (FAU), set the FAU on the scanner unit and connect the FAU cable to the FAU connector before Step 2. Refer to "Scanning Film" manual.

4. Install the Driver Software

Windows Millennium Edition

1. Turn the computer on.
2. The [Add New Hardware Wizard] will appear.
Confirm that [Automatic search for a better driver (Recommended)] is selected.
3. Place the CanoScan Setup CD-ROM in the drive.
4. Wait for 10 seconds, then click [Next].
The driver will begin to install.



5. When [Windows has finished installing the new hardware device.] appears, click [Finish].



Windows 98 / 2000

The screen shots in this section are from Windows 98.

1. Turn the computer on.
2. When [Add New Hardware Wizard] appears, click [Next].
3. Confirm that [Search for the best driver for your device. (Recommended)] is selected and click [Next].
4. Place the CanoScan Setup Utility CD-ROM in the drive.
5. Confirm that [CD-ROM drive] is selected, wait for 10 seconds, and then click [Next].
If [Driver Not Found] appears, click [Back] and repeat Step 5.
6. When [CanoScan D1230U] or [CanoScan D2400U] appears, click [Next].

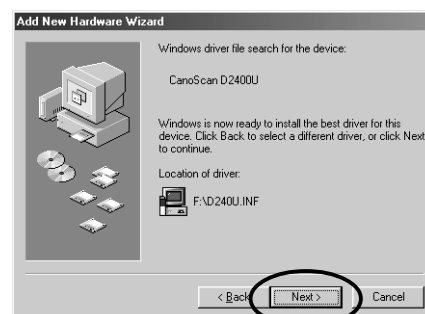
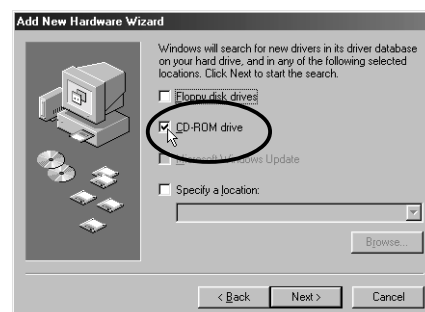
The driver will begin to install.

If you are prompted to insert the Windows 98 CD-ROM, follow the instructions below.

- a. Click [OK].
- b. Click [Browse].
- c. Select the CD-ROM drive and click [OK].
- d. Click [OK].

With Windows 2000 Professional, it may appear message box [The software you are about to install does not contain a Microsoft digital signature.]. Continue installation clicking [Yes].

7. Click [Finish].



5. Install the Application Software

List of Software to be Installed (approx. total of 201MB)

- | | | |
|-------------------------|---------|--|
| • ScanGear Toolbox | (5 MB) | -Scanning Utility Program |
| • Adobe Photoshop LE | (40 MB) | -Image Editing Program |
| • ArcSoft PhotoBase | (50 MB) | -Album Program |
| • Canon PhotoRecord | (50 MB) | -Photo Printing Program |
| • ScanSoft OmniPage Pro | (46 MB) | -OCR (Optical Character Recognition) Program |
| • Adobe Acrobat Reader | (10 MB) | -PDF Reader |

Installation Procedures

1. **Eject the CanoScan Setup Utility CD-ROM and re-insert it.**

The CanoScan Setup Utility main menu will appear.

2. **Click [Install the Software].**

[Software User License Agreement] is confirmed. Click [Yes] if you have no problem.

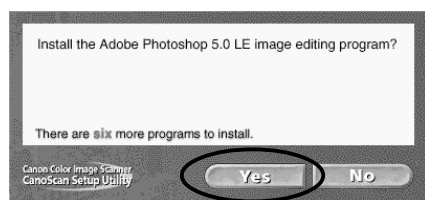
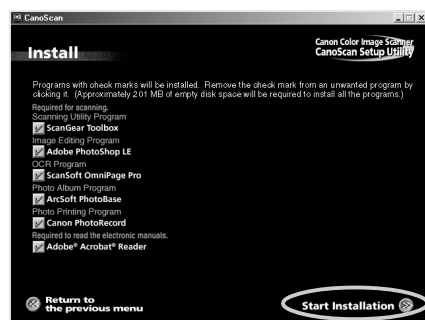
The install window will display.



3. **Click [Start Installation].**

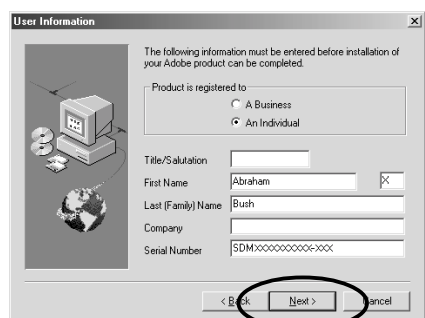
[Starts the Adobe Photoshop 5.0 LE installer?] appears. Click [Yes].

The serial number notification appears. Click [Next].



4. **The Adobe Photoshop LE installation starts.**

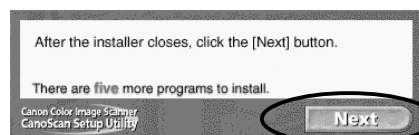
In the series of dialogs, select the appropriate option(s) and click [Next] or [Accept]. When you are prompted to enter the serial number, refer to the number on the CD-ROM envelope to enter it.



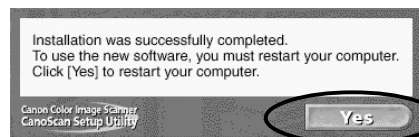
5. When the Adobe Photoshop LE installation completes, click [Finish].



6. Click [Next] to start installation of other bundled application programs.
Follow the message prompts, select the appropriate option(s), and click [Yes] or [Next] to continue the installation.



7. When the installation is complete, click [Yes].
The computer will restart.

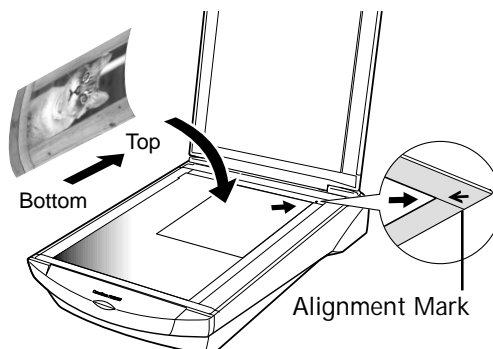


8. After Windows restarts, remove the CD-ROM from the drive and store it in a safe place.

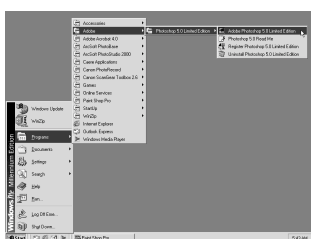
6. Try Scanning

1. Place your item (photo or picture) on the glass.

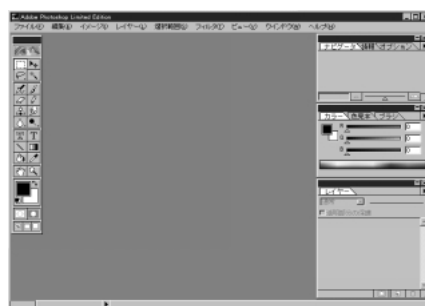
Place the item face down and align its top edge with the alignment mark at the back corner of the glass.



2. Click the [Start] menu and select [Programs], [Adobe], [Photoshop 5.0 Limited Edition] and [Photoshop 5.0 Limited Edition].



Photoshop LE will start.



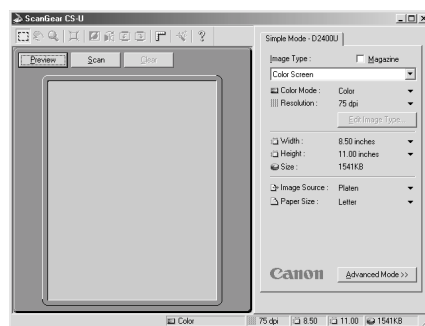
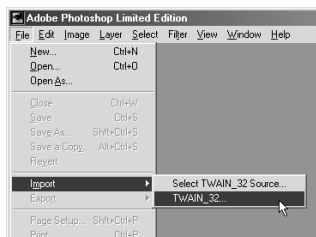
< If you install another scanner or a digital camera, select this scanner. >

- a. Click the [File] menu and select [Import] and [Select TWAIN_32 Source].
- b. Highlight [CanoScan D1230U] or [CanoScan D2400U] and click [Select].



3. Click the [File] menu and select [Import] and [Select TWAIN_32].

ScanGear CS-U will start.

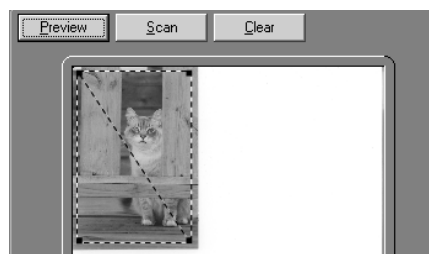


4. Click [Preview].

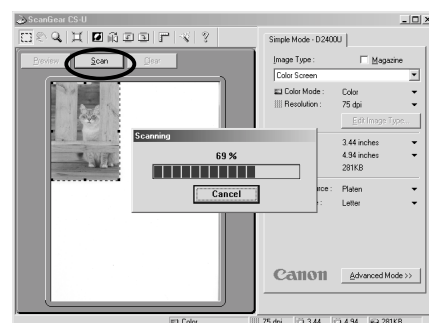
After calibration, the preview scan will start and gradually display the image.




5. Drag the mouse diagonally to select the area you want to scan.

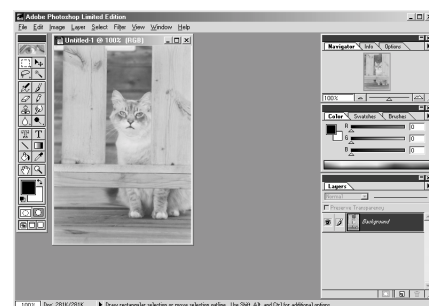



6. Click [Scan].
After calibration, the final scan will start.



7. Click  in the ScanGear CS-U window to close it.

The scanned image will appear in the Photoshop LE window.



8. Save the scanned image.
Click the [File] menu and select [Save As...]. Enter the folder where you wish to store the image file, enter a file name and file type, and click [Save].
9. Click  in the Photoshop LE window to close it.

You have now confirmed the scanner operation.
You should now be ready to explore the possibilities of the bundled software.

For details about the bundled software, read the Product Guide or user's guide for each software program, which contained on the CanoScan Setup Utility CD-ROM as PDF manuals.

If the scanner does not perform as described above, read the [Troubleshooting] section of the CanoScan Setup Utility CD-ROM.

Using the Macintosh Platform

3. Install the Software

List of Software to be Installed (approx. total of 110MB)

• Canon Plug-in Module CS-U	(10 MB)	-Plug-in Module
• CanoScan Toolbox	(5 MB)	-Scanning Utility Program
• Adobe Photoshop LE	(40 MB)	-Image Editing Program
• ArcSoft PhotoBase	(2 MB)	-Album Program
• Canon ImageBrowser	(15 MB)	-Photo Printing Program
• ScanSoft OmniPage SE	(30 MB)	-OCR (Optical Character Recognition) Program
• Adobe Acrobat Reader	(8 MB)	-PDF Reader

Installation Procedures

Ensure that the scanner is NOT CONNECTED to the computer.

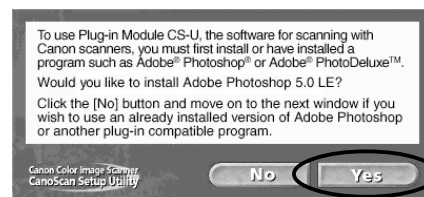
1. Turn the computer on.
2. Place the CanoScan Setup Utility CD-ROM in the drive.

The CanoScan Setup Utility main menu will appear.

Note: If no window displays, double-click the CD-ROM icon, then the Setup icon.

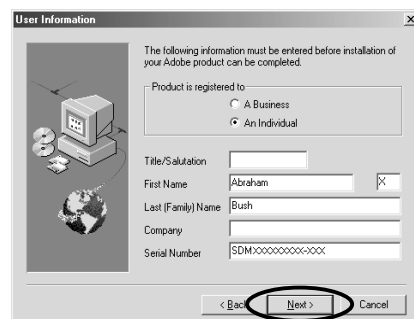
3. Click [Install the Software].
[Software User License Agreement] is confirmed. Click [Yes] if you have no problem.

4. In the [Would you like to install Adobe Photoshop 5.0 LE?] dialog, click [Yes].
In the dialogs for serial number and restart notification, click [Next].



5. **The Adobe Photoshop LE installation starts.**

In the series of dialogs, select the appropriate option(s) and click [Next] or [Accept]. When you are prompted to enter the serial number, refer to the number on the CD-ROM envelope to enter it.



6. **When the Photoshop LE installation is complete, click [Restart].**

The Macintosh will restart and the CanoScan Setup Utility main menu will appear again.

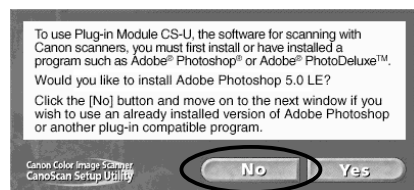


7. **Click [Install the Software].**

[Software User Licence Agreement] is confirmed again. Click [Yes].

8. **In the [Would you like to install Adobe Photoshop 5.0 LE?] dialog, click [No].**

The install window will display.

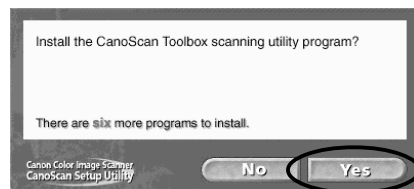


9. **Click [Start Installation].**



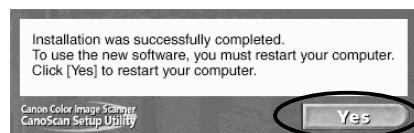
10. **Click [Yes] to start installation of other bundled application programs.**

Follow the message prompts, select the appropriate option(s), and click [Yes], [Next], [OK] or such to continue the installation.



11. **When the installation is complete, click [Yes].**

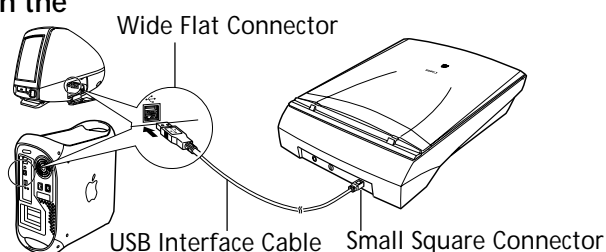
The computer will restart.



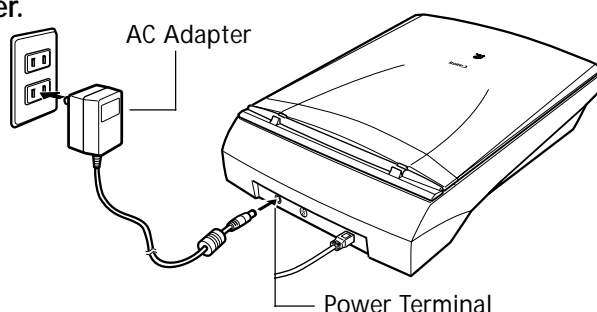
12. **After restart, close the CanoScan Setup window, then eject the CD-ROM by dragging its icon to the Trash and store it in a safe place.**

4. Connect the Computer

1. Connect the scanner to the computer with the supplied USB interface cable.



2. Connect the AC adapter to the scanner.

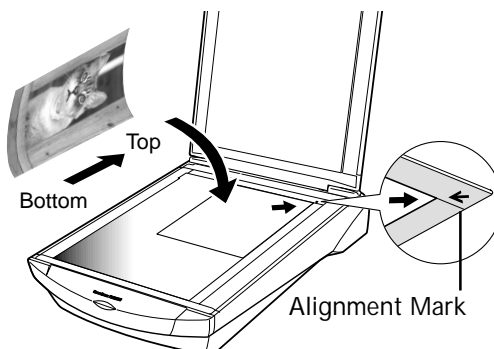


Only use the AC adapter provided with the scanner. Use of other AC adapters may lead to a malfunction.

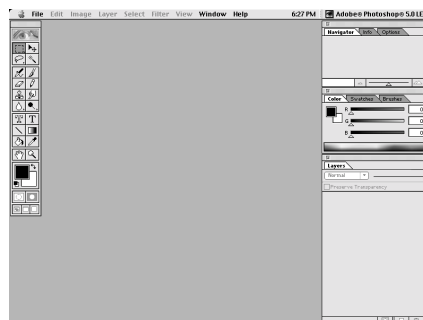
- The scanner does not have a power switch. The power is activated as soon as the AC adapter is plugged in.
- If you wish to use a Film Adapter Unit (FAU), set the FAU on the scanner unit and connect the FAU cable to the FAU connector before Step 2. Refer to "Sanning Film" manual.

5. Try Scanning

1. Place your item (photo or picture) on the glass.
Place the item face down and align its top edge with the alignment mark at the back corner of the glass.

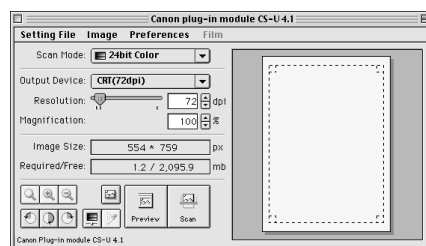
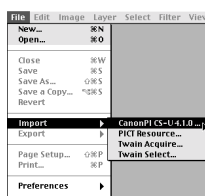


2. Open the [Adobe Photoshop 5.0 LE] folder and double-click the [Adobe Photoshop 5.0 LE] icon. Photoshop LE will start.



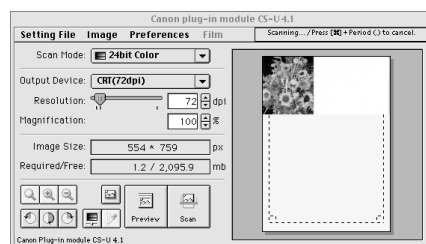
- Click the [File] menu and select [Import] and [Canon PI CS-U 4.1.0...].

Canon Plug-in Module CS-U will start.



- Click [Preview].

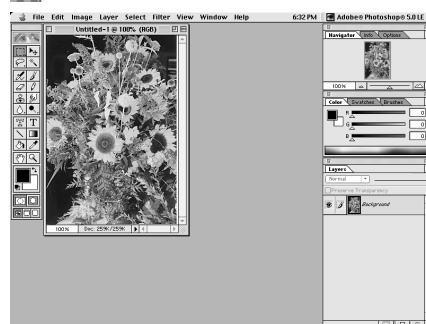
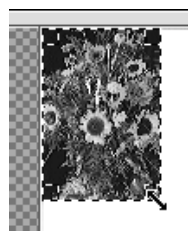
After calibration, the preview scan will start and gradually display the scanned image.




- Drag the mouse diagonally to select the area you want to scan.

- Click [Scan].

After calibration, the final scan will start.



- Click  (close box) in the Canon Plug-in Module CS-U window to close it.

The scanned image is displayed in a Photoshop LE window as "Untitled".

- Save the scanned image.

Click the [File] menu and select [Save As...].
Enter the folder where you wish to store the image file, enter a file name and format, and click [Save].

- Click the [File] menu and select [Quit].

Photoshop LE will close.

You have now confirmed the scanner operation.

You should now be ready to explore the possibilities of the bundled software.

For details about the bundled software, read the Product Guide or user's guide for each software program, which contained on the CanoScan Setup Utility CD-ROM as PDF manuals.

If the scanner does not perform as described above, read the [Troubleshooting] section of the CanoScan Setup Utility CD-ROM.

Specifications

		CanoScan D1230U	CanoScan D2400U
Scanner Type		Flatbed	
Scanning Element		3 line CCD	6 line CCD
Light Source		Cold cathode fluorescent lamp	
Optical Resolution		1200 x 2400 dpi	2400 x 4800 dpi
Selectable Resolution		25 - 9600 dpi (ScanGear CS-U, Canon Plug-in Module CS-U)	
Scanning Bit Depth	Color	48 bit input, 24 bit/42 bit output	48 bit input, 24 bit/48 bit output
	Grayscale	16 bit input, 8 bit /14 bit output	16 bit input, 8 bit /16 bit output
Scanning Speed* ¹	Color / Grayscale / B&W	less than 600dpi : 3.60msec/line	less than 600dpi : 4.50msec/line
		more than 601dpi : 7.20msec/line	more than 601dpi : 9.00msec/line
Preview Speed		Approximately 6 sec.	Approximately 9 sec.
Start Button		Yes	
Interface		USB1.1	
Maximum Media Size		A4 /Letter, 216 x 297 mm (8.5 x 11.7 in.)	
Operating Range	Temperature	10° to 35° C (50° to 95° F)	
	Humidity	10% to 90% (without condensation formation)	
Power Requirements		AC Adapter (100/120/230/240 V)* ²	
Power Consumption		17 watts maximum (20 watts max. with FAU), stand-by 8 watts (using supplied AC adapter)	
Maximum Exterior Dimensions		286 x 461 x 92.5 mm (11.3 x 18.1 x 3.6 in.)	
Weight		Approximately 3.4 kg (7.5 lbs.)	
Optional Unit		Film Adapter Unit FAU-S12	Film Adapter Unit FAU-S13

*1 Transfer time to computer is not included.

*2 Type of AC adapter depends on the area where the scanner is purchased.

- Specifications are subject to change without notice.

Warning

When you use this product, you should pay attention to the following legal issues:

- Scanning of certain documents, such as bank notes (bank bills), government bonds and public certificates, may be prohibited by law and may result in criminal and/or civil liability.
- You may be required under law to obtain authorization from a person possessing copyrights or other legal rights to the item being scanned.

If you are uncertain of the legality of scanning any particular item, you should consult your legal adviser in advance.

- CanoScan, ScanGear and Canon Plug-in Module are trademarks of Canon Inc.
- Adobe®, Acrobat® and PhotoShop® are trademarks of Adobe Systems Incorporated.
- Macintosh, Power Macintosh and Mac OS are trademarks of Apple Computer, Inc., registered in the U.S. and other countries.
- iMac is a trademark of Apple Computer, Inc.
- Microsoft and Windows are registered trademarks of Microsoft Corporation in the U.S. and other countries.
- OmniPage Pro and OmniPage SE are trademarks of ScanSoft, Inc.
- Other names and products not mentioned above may be trademarks or registered trademarks of their respective companies.

Copyright © 2001 Canon Inc. All rights reserved.