

CANON INC.

30-2, Shimomaruko 3-chome, Ohta-ku
Tokyo 146-8501, Japan

CANON U.S.A., INC.

Digital Home and Personal Systems Division

2995 Redhill Avenue, Costa Mesa, CA 92626, U.S.A.
Customer Care Center: 1-757-413-2848
<http://www.usa.canon.com/consumer>

CANON CANADA INC.

6390 Dixie Road, Mississauga, Ontario L5T 1P7, Canada
1-800-OK CANON
<http://www.canon.ca>

CANON LATIN AMERICA, INC.

703 Waterford Way, Suite 400
Miami, Florida 33126, U.S.A.

CANON MEXICANA, S. de R.L. de C.V.

Anillo Periferico Sur No. 4124, Torre Zafiro (II) Colonia
Ex-Rancho de Anzaldo, Piso 5 y 6, Mexico D.F.
Tel. (525) 5490-2000

CANON PANAMA, S.A.

Apartado 7022, Panama 5, Rep. de Panama
Tel. (507) 279-8900

CANON CHILE, S.A.

Ave. Manquehue Norte #1337, Piso 3, Casilla 187-9
Santiago, Chile
Tel. (562) 366-6600

CANON ARGENTINA, S.A.

Ave. Corrientes 420 (1043)
Buenos Aires, Argentina
Tel. (5411) 432-59800

CANON EUROPA N.V.

P.O. Box 2262 1180 EG Amstelveen, The Netherlands

CANON (UK) LTD.

Woodhatch, Reigate, Surrey RH2 8BF, United Kingdom
For technical support, please contact Canon Helpdesk.
Helpdesk:
P.O. Box 431, Wallington, Surrey SM6 0XU
Tel: (08705) 143 723 (Calls may be recorded)
Fax: (08705) 143 340
For sales enquiries: (0121) 666-6262

CANON COMMUNICATION & IMAGE FRANCE S.A.

102 Avenue du Général de Gaulle
92257 LA GARENNE COLOMBES CEDEX, France
Tél: 01.41.30.15.15 Fax: 01.41.30.15.05
<http://www.canon.fr>

CANON DEUTSCHLAND GmbH

Postfach 528, 47705 Krefeld, Germany
CANON- Hotline-Service
Customer Support: (0 21 51) 349-555
Info-Desk: (0 21 51) 349-566
Telefax: (0 21 51) 349-588

CANON ITALIA S.p.A

Palazzo L, Strada 6, 20089 Milanofiori-Rozzano (MI), Italy
Tel: 02/8248.1 Fax: 02/8248.4600
Pronto Canon 02/8249.2000
<http://www.canon.it>

CANON NEDERLAND N.V.

Neptunusstraat 1, 2132 JA Hoofddorp, The Netherlands
Tel: 023-5 670 123 Fax: 023-5 670 124
Helpdesk: 023-5 681 681
<http://www.canon.nl>

CANON BELGIUM N.V./S.A.

Bessenveldstraat 7, 1831 Diegem, Belgium
Tel: 02 7220411 Fax: 02 7213274
Helpdesk: 02 7220404
<http://www.canon.be>

CANON GmbH

Zetschegasse 11, 1230 Wien, Austria
<http://www.canon.at>

CANON (SCHWEIZ) A.G.

Industriestrasse 12, 8305 Dietlikon, Switzerland
Tel: (01) 835 61 61 Fax: (01) 835 68 85
Hotline: 157 30 20
<http://www.canon.ch>

CANON ESPAÑA S.A.

C/Joaquin Costa No 41, 28002, Madrid, Spain
Help Desk: 906.301255
Tel.: 91-538 4500 Fax.: 91-411 4176

CANON DANMARK

Vasekær 12, DK-2730 Herlev, Denmark
Hotline: 44 88 26 66
<http://www.canon.dk>

CANON NORGE AS

Hallagerbakken 110, Boks 33, Holmlia, 1210 Oslo 12, Norway
Tlf: 2262 9321 Faks: 2262 0615
<http://www.canon.no>

CANON SVENSKA AB

Gustav III:s Boulevard 26, S-169 88 Solna, Sweden
Support-Under garantitiden: Tel. 08-744 86 20
Support-Efter garantitiden: Tel. 0900-20 30 555
E-post support: anvandar.klubben@canon.se
<http://www.canon.se>

CANON OY AB

Korнетintie, 3, 00380 Helsinki, Finland
Puhelin: 010 54420 Fax: 010 544 4571
Helpdesk: 0600 0 22606 (9,95 mk/min+pvm)
0600 0 22666 (enint. 40 mk/puhelu+pvm)
Sähköposti: helpdesk@canon.fi
Internet: www.canon.fi

CANON SINGAPORE PTE. LTD.

79 Anson Road #09-01/06, Singapore 079906
<http://www.canon-asia.com>

CANON MARKETING SERVICES PTE. LTD.

No. 1, Jalan Kilang Timor, #09-00 Pacific Tech Centre, Singapore, 159303
Tel: 65-7998888, Fax: 65-2736786
Hotline: 65-3342726
<http://www.canon.com.sg>

CANON MARKETING (MALAYSIA) SDN. BHD.

Block D, Peremba Square
Saujana Resort, Section U2, 40150 Shah Alam, Selangor Darul Ehsan
Malaysia
Tel: 603-7446000, Fax: 603-7446048
Helpdesk: 603-7446008/9
Enquiry: print&scan@canon.com.my
<http://www.canon.com.my>

CANON MARKETING (THAILAND) CO. LTD.

179/34-45 Bangkok City Tower, 9th-10th Floor
South Sathorn Road, Thungmahamek
Sathorn, Bangkok 10120, Thailand
Tel: 662-3449999, Fax: 662-3449968
<http://www.canon.co.th>

CANON MARKETING (PHILIPPINES) INC.

Marvin Plaza Building, 2153 Don Chino Rocas Ave,
Makati City, Metro Manila, Philippines
Tel: 632-8126047, Fax: 632-8120067/8109797

CANON INDIA LTD.

Neela Gagan, Mandi Road, Mehrauli, New Delhi-110030, India
Tel: 91-11-6806572, Fax: 91-11-6807180

CANON HONGKONG CO., LTD.

9/F, The Hong Kong Club Building 3A, Chater Road, Central, Hong Kong
TEL: (852) 2739 0802 FAX: (852) 2739 6428

CANON AUSTRALIA PTY. LTD.

1 Thomas Holt Drive, North Ryde, Sydney N.S.W. 2113, Australia
Info-Line: (02) 9805 2864

CANON NEW ZEALAND LTD.

Fred Thomas Drive, Takapuna, P.O. Box 33-336, Auckland, New Zealand
Info-Line: (09)489 0470

ADOBE SYSTEMS INCORPORATED

<http://www.adobe.com>

ARCISOFT, INC.

<http://www.arcsoft.com>

SCANSOFT, INC.

<http://www.scansoft.com>

Canon Color Image Scanner CanoScan D1250U2F

Quick Start Guide



Color Image Scanner Models: F916000 (CanoScan D1250U2F)

This device complies with Part 15 of the FCC Rules. Operation is subject to the following two conditions: (1) This device may not cause harmful interference, and (2) this device must accept any interference received, including interference that may cause undesired operation.

Note: This equipment has been tested and found to comply with the limits for class B digital device, pursuant to Part 15 of the FCC Rules. These limits are designed to provide reasonable protection against harmful interference in a residential installation. This equipment generates, uses and can radiate radio frequency energy and, if not installed and used in accordance with the instructions, may cause harmful interference to radio communications. However, there is no guarantee that interference will not occur in a particular installation.If this equipment does cause harmful interference to radio or television reception, which can be determined by turning the equipment off and on, the user is encouraged to try to correct the interference by one or more of the following measures:

- Reorient or relocate the receiving antenna.
- Increase the separation between the equipment and receiver.
- Connect the equipment into an outlet on a circuit different from that to which the receiver is connected.
- Consult the dealer or an experienced radio/TV technician for help.

Use of shielded cable with the ferrite core provided with the scanner is required to comply with Class B limits Subpart B of Part 15 of the FCC rules.

Do not make any changes or modifications to the equipment unless otherwise specified in the manual. If such changes or modifications should be made, you could be required to stop operation of the equipment.

Canon U.S.A. Inc.
One Canon Plaza, Lake Success, NY 11042, U.S.A
Tel No.(516)-328-5600

The socket-outlet shall be installed near the equipment and shall be easily accessible.

Use of a shielded cable with the ferrite core(s) provided with the scanner is necessary to comply with the technical requirements of the EMC Directive.

Warning

When you use this product, you should pay attention to the following legal issues:

- Scanning of certain documents, such as bank notes (bank bills), government bonds and public certificates, may be prohibited by law and may result in criminal and/or civil liability.
- You may be required under law to obtain authorization from a person possessing copyrights or other legal rights to the item being scanned.

If you are uncertain of the legality of scanning any particular item, you should consult your legal adviser in advance.

- CanoScan and ScanGear are trademarks of Canon Inc.
- Adobe®, Acrobat® and Photoshop® are trademarks of Adobe Systems Incorporated.
- Microsoft and Windows are registered trademarks of Microsoft Corporation in the U.S. and other countries.
- OmniPage Pro is a trademark of ScanSoft, Inc.
- Other names and products not mentioned above may be trademarks or registered trademarks of their respective companies.

In this guide the screen shots are taken with Windows XP in the explanation common to all operating systems. The screen shots of Windows XP may vary from the actual screen shots.



Overview

Setup and Scanning

Check the Package Contents

➔ P. 4



Unlock the Scanning Unit

➔ P. 5



Connect the Scanner

➔ P. 6



Install the Software

Install the Scanner Driver

➔ P. 7 - P. 9



Install the Application Programs

➔ P. 10 - P. 11



Try Scanning

➔ P. 12 - P. 13

Try the Additional Features

How to Use the Scanner's Buttons

➔ P. 14

How to Scan Films

➔ P. 15 - P. 18

How to Use the Software

ScanGear CS-U (scanner driver)

➔ P. 19 - P. 20

ScanGear Toolbox (scanning utility)

➔ P. 21 - P. 22

Software Program Manuals ----- Read the electronic manuals (PDF files) on the CD-ROMs

Operating Tips ----- Read the "Troubleshooting" section of the CanoScan Setup Utility CD-ROM



Safety Precautions

Please read and take note of the following precautions before using the equipment.

WARNING

Warns about operations that may lead to death or injury to persons if not performed correctly. In order to use the equipment safely, always pay attention to these warnings.

CAUTION

Cautions about operations that may lead to injury to persons or damage to property if not performed correctly. In order to use the equipment safely, always pay attention to these cautions.

About Locations

WARNING

- Do not place the equipment near flammable liquids such as alcohol or thinners. If the internal electrical parts come in contact with flammable liquids, fire or electrical shock may result.
- Do not place the following objects on top of the equipment. If the internal electrical parts come in contact with these objects, fire or electrical shock may result.
 - metallic objects, such as necklaces
 - containers with liquid, such as cups, vases or flower potsIf any of these objects or liquids enter the equipment, immediately unplug the AC adapter and contact your retailer or Canon Customer Support Help Desk.

CAUTION

- Do not place the equipment in the following areas. Fire or electrical shock may result.
 - Areas with high humidity
 - Areas subject to direct sunlight
 - Areas with high temperatures
 - Areas near sources of flame
- Do not place the equipment on shaky stands, unstable surfaces or surfaces subject to frequent vibrations. If the equipment falls, it may cause injuries.
- Do not place heavy objects on the equipment. Objects may fall and cause injuries.

About the Power Supply

WARNING

- Do not damage, mutilate or modify the AC adapter. Do not place heavy objects on, pull or excessively bend the cord of the AC adapter. Damaged wires may cause fire or electrical shock.
- Do not plug in/unplug the AC adapter with wet hands. Fire or electrical shock may result.
- Do not connect excessive numbers of plugs into one electrical outlet. Fire or electrical shock may result.
- Do not twist or tie the AC adapter together. Fire or electrical shock may result.
- Always plug the AC adapter in all the way. If it is not plugged in completely, fire or electrical shock may result.
- Do not use AC adapters other than the one supplied. Fire or electrical shock may result.
- As a rule, do not use electrical extension cords. Fire or electrical shock may result. If the use of an extension cord is necessary, do not use one longer than 5 m (15 feet). Make sure that the extension cord is not twisted, and that the AC adapter is fully plugged into the extension cord. Do not use multiple extension cords.
- Do not use extension cords in corridors or other high traffic areas where they can be stepped on or tripped over. This could damage the cords and result in fire or electrical shock.
- Do not use the AC adapter outdoors or in exposed areas.



Safety Precautions

CAUTION

- Do not plug the equipment into outlets with voltages other than the specified voltages. Incorrect voltages may result in fire or electrical shock.
- When unplugging the AC adapter, always pull on the main body. Pulling on the cord may damage the wires and lead to fire or electrical shock.
- Do not place objects around the AC adapter in case it needs to be unplugged during emergencies.
- Unplug the AC adapter from the outlet at least once a year and clean the area around the base of the AC adapter's metal pins to ensure that all dust is removed. If dust accumulates in this area, it may result in fire.

General Handling Precautions

WARNING

- Do not take apart or modify the equipment. Fire or electrical shock may result from improper handling of its components.
- If you hear unusual noises, see smoke, feel excessive heat or smell anything unusual, immediately unplug the AC adapter and contact your retailer or Canon Customer Support Help Desk. Continued use of the equipment may result in fire or electrical shock.
- Do not use flammable sprays near this equipment. Also do not spill water, liquids, or flammable liquids on the equipment. If these fluids enter this equipment and contact the electrical parts, fire or electrical shock may result. If anything enters the equipment, immediately unplug the AC adapter and contact your retailer or Canon Customer Support Help Desk.
- When cleaning the equipment, always unplug the AC adapter. Otherwise, fire or electrical shock may result.
- When cleaning the equipment, use a water-moistened cloth that is well wrung out. Do not use flammable liquids, such as alcohol, benzene or thinners. If a flammable liquid enters the inner electrical parts, fire or electrical shock may result.

CAUTION

- Carefully close the document cover in order not to pinch your hands.
- Do not press heavily on the document glass or the document cover. The document glass may break and injure you.
- Do not bump the document glass or drop heavy books or objects on it. The document glass may break and injure you.
- When not in use for extended periods, such as long weekends, unplug the AC adapter for safety.
- When transporting the equipment, be extremely careful. Dropping it could cause an injury.
- Wait until the equipment has cooled before placing a cover over it. Otherwise fire may result.
- Do not use the supplied CD-ROM in regular CD players. It produces excessively loud sound that may cause hearing damage.

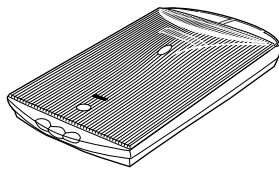
Setup and Operating Conditions

- Do not set up in areas where there are excessive fluctuations in temperature. Also do not move the equipment from low-temperature areas to high-temperature areas. Condensation may cause image errors. Leave the scanner enough time to gradually adapt to the new conditions before use.
- Do not use the equipment in areas subject to direct sunlight or strong room light. It may cause damage to the equipment or decrease image quality. If you have to use the scanner in direct sunlight, make sure to use a thick curtain to block the light.



Check the Package Contents

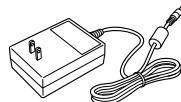
■ Scanner Unit and Accessories



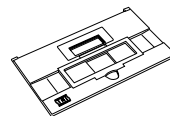
D1250U2F



USB
Interface Cable



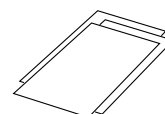
AC Adapter



Film Guide

■ Documents and Software Programs

- Quick Start Guide (this guide)
- Additional documents
- CanoScan Setup Utility CD-ROM



ScanGear CS-U (10 MB) - Scanner Driver

It allows you to scan and load images from the scanner. Also called TWAIN driver.

ScanGear Toolbox (10 MB) - Scanning Utility Program

It enables you to scan images and copy (print), attach images to e-mail messages or save images with simple steps. It also works with scanner's buttons.

ArcSoft PhotoBase (60 MB) - Photo Album Program

It can create and edit image albums, perform image searches and create slide shows.

ScanSoft OmniPage Pro (75 MB) - OCR (Optical Character Recognition) Program

It converts characters scanned from a book, magazine or newspaper into text data for editing or digital transmission.

Canon PhotoRecord (60 MB) - Photo Printing Program

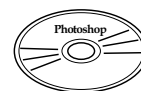
It cannot load images from the scanner, but can edit or decorate the images for printing or saving as the photo album.

Adobe Acrobat Reader (24 MB) - Electronic Manual Viewer Program

Electronic (PDF) manuals for above software programs

Troubleshooting guide

• Adobe Photoshop Elements CD-ROM



Adobe Photoshop Elements (120 MB) - Image Editing Program

It can load images from the scanner and process them with editing, retouching, special effects and enhancements.

Electronic (PDF) manual and other information



- Approximately 359 MB of hard disk space on your computer is required to install all the programs. In addition, further free hard disk space will be required to operate the program.

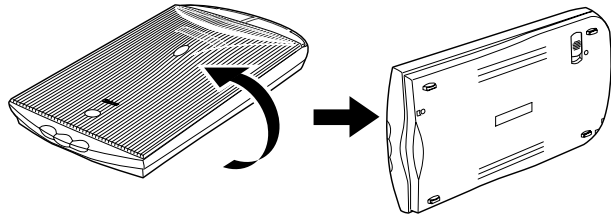


Unlock the Scanning Unit

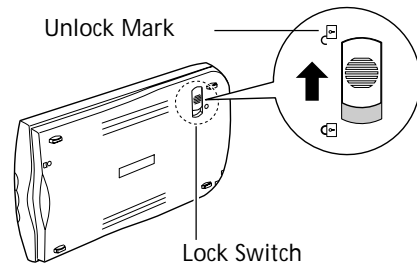


- Unlock the scanner before connecting it to the computer. If it is left locked, a malfunction or other problem may occur.

- 1. Peel the seals off the scanner.**
- 2. Gently turn the scanner over.**



- 3. Push the lock switch toward the unlock mark.**



- 4. Return the scanner to a horizontal position.**

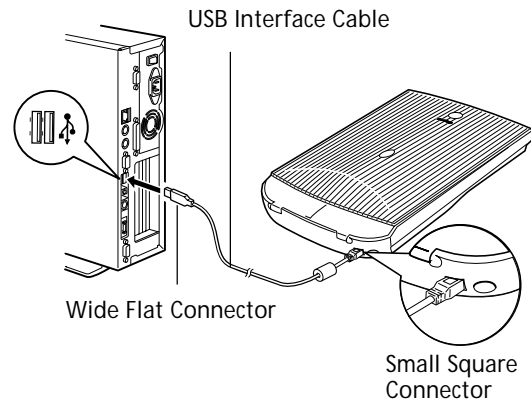


Connect the Scanner

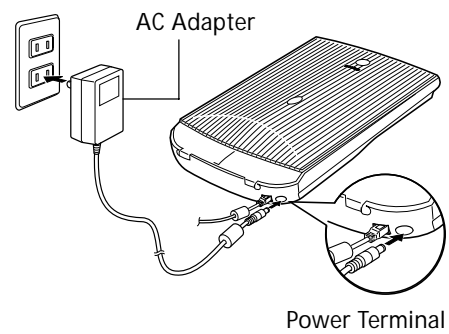


- Confirm that the power switches for the computer and other connected devices are off.

- 1. Connect the scanner to the computer with the supplied USB interface cable.**



- 2. Connect the AC adapter to the scanner.**



- Only use the USB interface cable and the AC adapter provided with the scanner. Use of other cables or adapters may lead to a malfunction.
- The scanner does not have a power switch. The power is activated as soon as the computer is turned on.



Install the Software

■ Install the Scanner Driver

Install the scanner driver (ScanGear CS-U) with the following procedure.

Windows XP Professional / Home Edition users
Windows Millennium Edition (Me) users
Windows 98 / Windows 2000 Professional users

➡ **Read this page.**
➡ **Go to P. 8.**
➡ **Go to P. 9.**



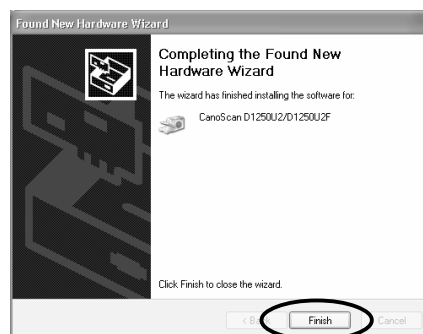
- With Windows XP and Windows 2000, you should log on with a user name set to an administrator when you install or uninstall software programs.

Windows XP Professional / Home Edition

1. Turn the computer on.
2. "Welcome to the Found New Hardware Wizard" will appear.
Confirm that "Install the software automatically (Recommended)" is selected.
3. Place the CanoScan Setup Utility CD-ROM in the drive.
The driver will begin to install.



4. When "Completing the Found New Hardware Wizard" appears, click [Finish].



➡ **Continue on P. 10.**



- Before you upgrade to Windows XP from Windows 98/Me/2000, you must uninstall ScanGear CS-U and ScanGear Toolbox using the "Uninstall the Software" menu of the CanoScan Setup Utility CD-ROM. If you upgrade to Windows XP with the software remaining, the scanner may not work. For details, please read the Troubleshooting section on the CanoScan Setup Utility CD-ROM.



Install the Software

Windows Millennium Edition (Me)

1. Turn the computer on.
2. The [Add New Hardware Wizard] dialog box will appear.
Confirm that "Automatic search for a better driver (Recommended)" is selected.
3. Place the CanoScan Setup Utility CD-ROM in the drive.
4. Wait for 10 seconds, then click [Next].
The driver will begin to install.
5. When "Windows has finished installing the new hardware device." appears, click [Finish].

➡ Continue on P. 10.



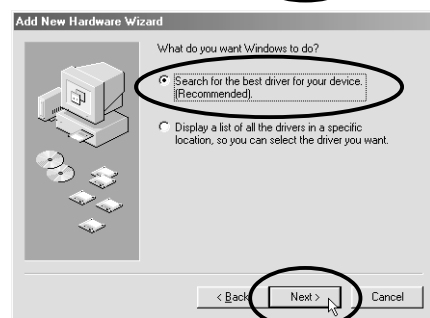


Install the Software

Windows 98 / Windows 2000 Professional

The screen shots in this section are from Windows 98.

1. Turn the computer on.
2. When the [Add New Hardware Wizard] dialog box appears, click [Next].
3. Confirm that "Search for the best driver for your device. (Recommended)" is selected and click [Next].
4. Place the CanoScan Setup Utility CD-ROM in the drive.
5. Confirm that "CD-ROM drive" is selected, wait for 10 seconds, and then click [Next].
If "Driver Not Found" appears, click [Back] and repeat this step.
6. When "CanoScan D1250U2/D1250U2F" appears, click [Next].
The driver will begin to install.
Windows 98 Users
If prompted to insert the Windows 98 CD-ROM, follow the instructions below.
 - a. Click [OK] to the dialog message.
 - b. Click [Browse].
 - c. Select the CD-ROM drive and click [OK].
 - d. Click [OK].
7. Click [Finish].





Install the Software

■ Install the Application Programs

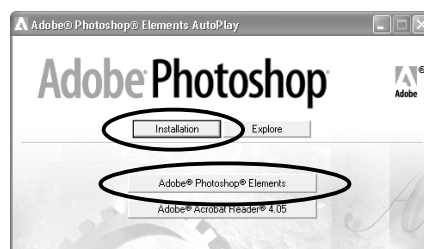
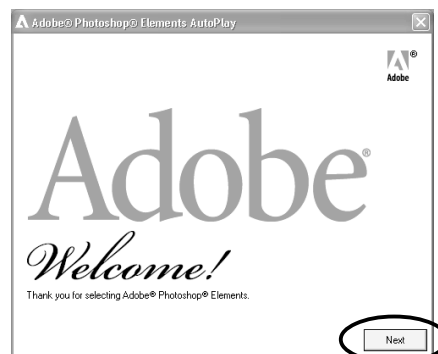
After finished installing the scanner driver, continue to install the application programs. First start with Adobe Photoshop Elements.

Installation of Adobe Photoshop Elements

1. Replace the CanoScan Setup Utility CD-ROM with the Adobe Photoshop Elements CD-ROM.

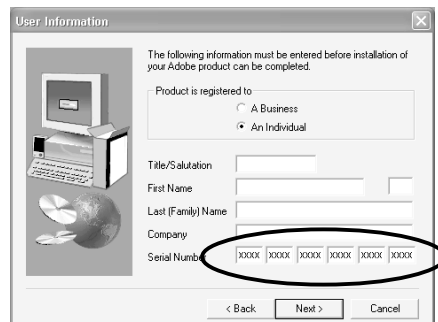
2. When the "Welcome" window appears, click [Next].

- You will be asked where you purchased the software. Select an option from the list and click [Next].
- Read the End User License Agreement and click [Accept] if you agree to the terms.
- Confirm that the [Installation] button is enabled, and click [Adobe Photoshop Elements].



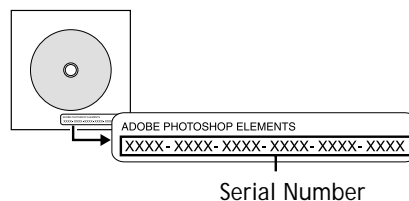
3. In the series of dialogs and windows, select or enter the appropriate settings, and click [Next] or [Yes].

In the [User Information] dialog, you must enter the "Serial Number". The serial number is shown on the Adobe Photoshop Elements CD-ROM case. Enter the 6 sets of 4 digits without hyphens.



4. Finally, when the "Setup is complete" message appears, click [Finish].

5. Remove the Adobe Photoshop Elements CD-ROM from the drive, and store it in a safe place.



• For details, see the "Read Me" file in the folder of your language on the CD-ROM.

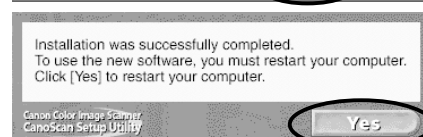
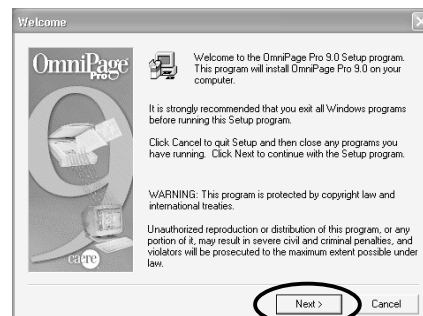
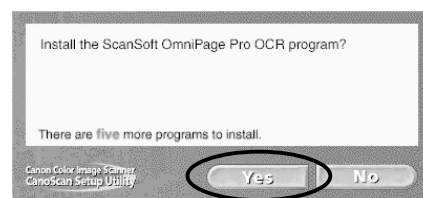
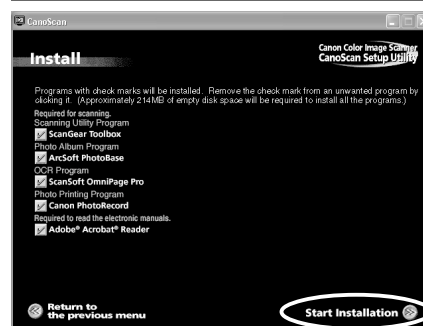


Install the Software

Continue to install the rest of application programs.

Installation of other application programs

- 1. Place the CanoScan Setup Utility CD-ROM.**
- 2. The CanoScan Setup Utility main menu will appear.**
- 3. Click [Install the Software].**
Read the Software User License Agreement. Click [Yes] if you accept the terms.
The Install window will display.
- 4. Click [Start Installation].**
You will install five application programs.
- 5. The installation procedure will start.**
Follow the on-screen message prompts and click [Yes] or [Next] to continue the installation.
- 6. When the installation is complete, click [Yes].**
The computer will restart.
- 7. After Windows restarts, remove the CD-ROM from the drive and store it in a safe place.**

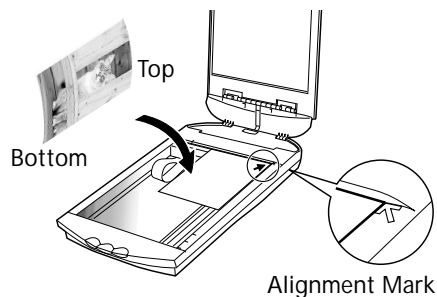




Try Scanning

The following steps explain how to scan with Adobe Photoshop Elements.

1. Place a photo or a picture on the glass by aligning its top edge with the alignment mark, and close the document cover.



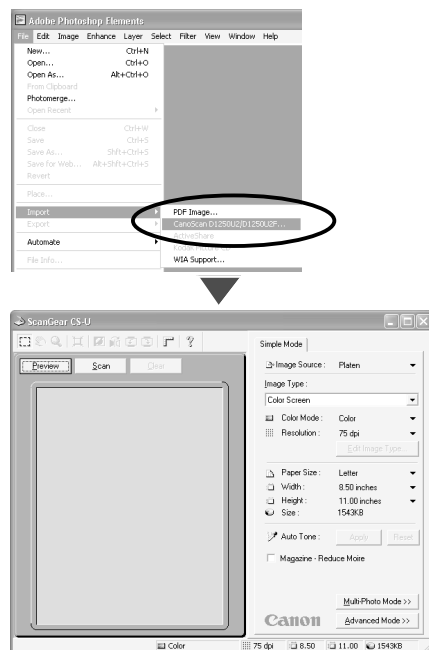
2. Click the Windows [Start] menu and select [Programs] or [All Programs], [Adobe], [Photoshop Elements] and [Adobe Photoshop Elements].

Adobe Photoshop Elements will start.



3. Click the [File] menu and select [Import] and [CanoScan D1250U2/D1250U2F...].

ScanGear CS-U will start.

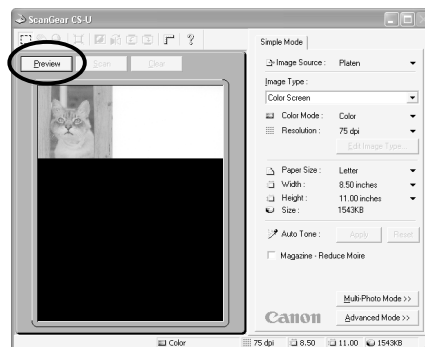




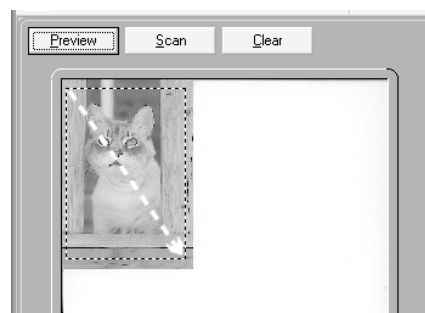
Try Scanning

4. Click [Preview].

The preview scan will start and gradually display the image.

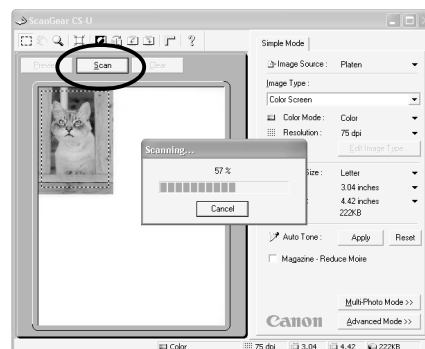


5. Drag the mouse diagonally to select the area you want to scan.



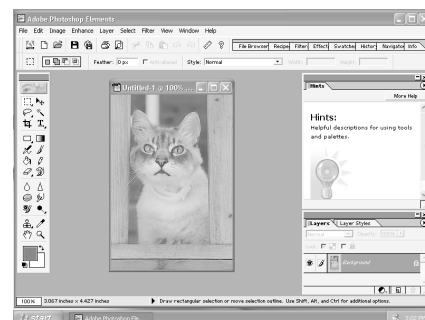
6. Click [Scan].

The final scan will start.



7. Click (close box) in the ScanGear CS-U window to close it.

The scanned image will appear in the Adobe Photoshop Elements window.



8. Save the scanned image.

Click the [File] menu and select [Save As]. Select the folder where you wish to store the image file, enter a file name and select a file type, and click [Save].

9. Click (close box) in the Adobe Photoshop Elements window to close it.

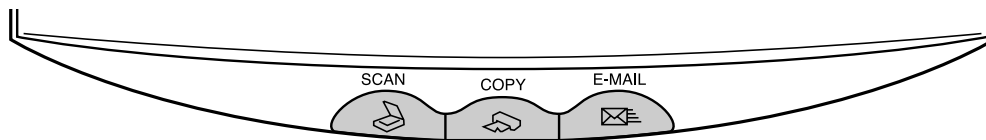


Using the Scanner Buttons

You can use the three convenient buttons on the front of the scanner to scan and perform related tasks easily with a single touch of the button. Place an item on the scanner before pressing a button.



- To use these buttons, ScanGear CS-U, ScanGear Toolbox and ArcSoft PhotoBase should be installed from the CanoScan Setup Utility CD-ROM.



SCAN Button

To open the scanned image in the PhotoBase window

1. Press the [SCAN] button.
2. The scanner will scan the item.
3. The scanned image will appear in the PhotoBase window.



COPY Button

To print (copy) the scanned image with a printer

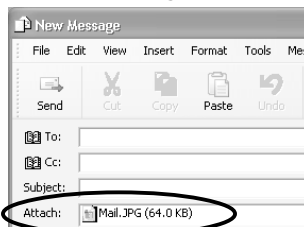
1. Press the [COPY] button.
 2. The scanner will scan the item.
 3. The scanned image will print.
- The printer driver should be installed and the printer should be on-line to use this function.



E-MAIL Button

To e-mail the scanned image as an attached file

1. Press the [E-MAIL] button.
2. The scanner will scan the item.
3. The [E-mail software selection] dialog will appear. Select an option from the list and click [OK].
 - This step is required only for the first scan.
4. The e-mail software will start, and the scanned image will be attached in a new message window.



5. Enter the receiver's address and title, write a message, confirm the required settings, and send the message.

- MAPI compliant e-mail software, such as Outlook Express, Microsoft Outlook, Eudora or Netscape Messenger should be installed and enabled. With certain e-mail software, you should set the MAPI function on.



- While scanning, you can change the default settings for scanning by clicking the [Cancel] button. For details on changing settings or arranging the scanner's button-to-function assignment, refer to the ScanGear Toolbox User's Guide (electronic manual).



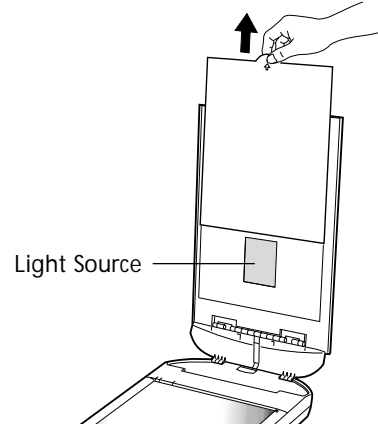
Scanning Film

■ Preparation

Removing the Protective Sheet

The document cover is equipped with a protective sheet for the light source. Make sure to remove this sheet before scanning film.

Remove the protective sheet by sliding it in the direction of the arrow.

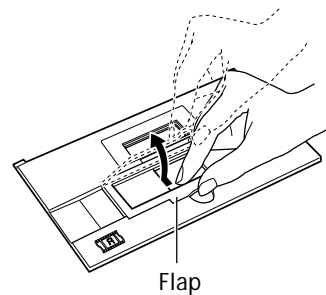


- Keep the protective sheet carefully not to be bent nor torn.
- Replace the protective sheet over the light source when not scanning film.

Positioning the Film

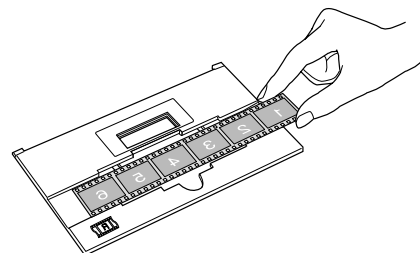
Load a film into the film guide as shown below and place the loaded guide onto the scanner's document glass.

- 1. Insert a fingernail into the slot in the film guide and lift up the flap.**



- 2. Place the film face down into the groove in the film guide.**

Position the target frame of the film in the middle of the groove.

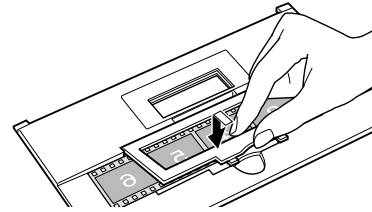
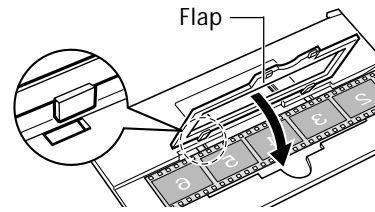


- Hold the film by the edges with your fingertips to avoid getting fingerprints or dirt on the film surface.
- Any dust on the film, scanner document glass or light source will show in the scanned images. Remove dust with a blower brush.

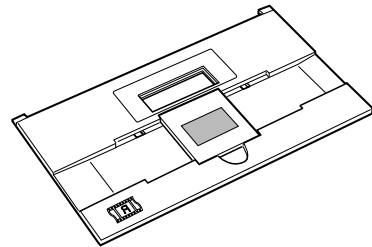


Scanning Film

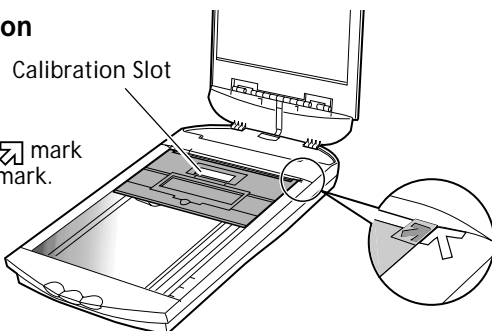
- 3. Attach the flap by aligning with the slots in the film guide and press it down.**



To place the mounted 35mm film, remove the flap and place the 35 mm slide mount in the middle of the film guide.

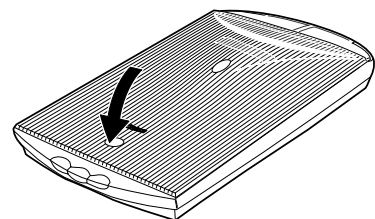


- 4. Place the loaded film guide in the correct position on the document glass.**



- Images will not scan correctly, or error messages will display, if the film guide is positioned incorrectly. Take care to position it correctly.
- The film guide has a calibration slot used by the scanner to calculate the color balance. The film cannot be scanned with the correct color balance if this slot is obstructed. Keep it clear.

- 5. Close the document cover.**



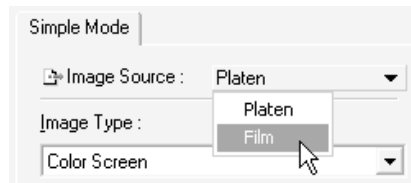


Scanning Film

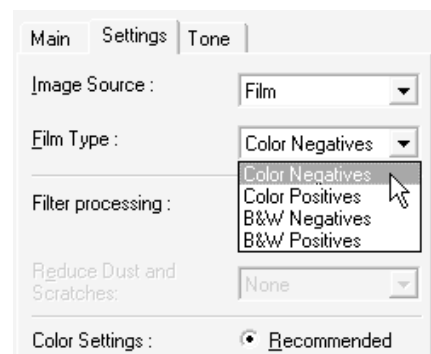
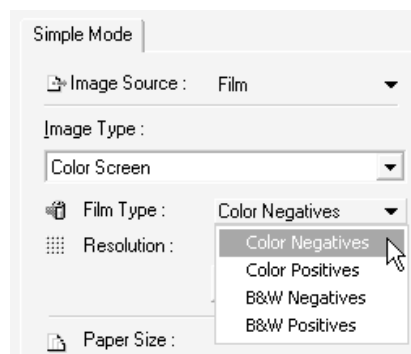
■ How to Scan Film

Scanning Procedure

1. Start one of the bundled application programs and start ScanGear CS-U from within it (see P. 19).
2. In the [Image Source] category, select [Film].

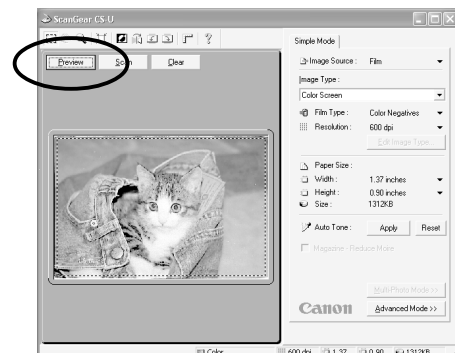


3. In the [Film Type] category, select color or black and white, and negative or positive.



4. Click the [Preview] button.

Select the Image Type or adjust color balance as required. Higher than 600 dpi of resolution is recommended when scanning film.



5. Select the scan area (see P. 13).



- When scanning mounted film, stripes may appear at the upper or lower of the scanned image. In this case, make sure to select the scan area avoiding stripes.

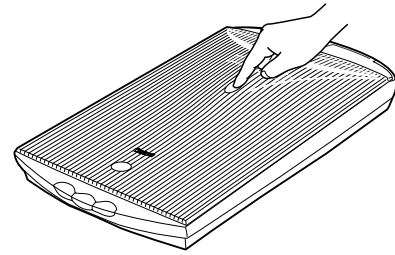
6. Click the [Scan] button.

After closing ScanGear CS-U, edit, save or print the image using the application program.

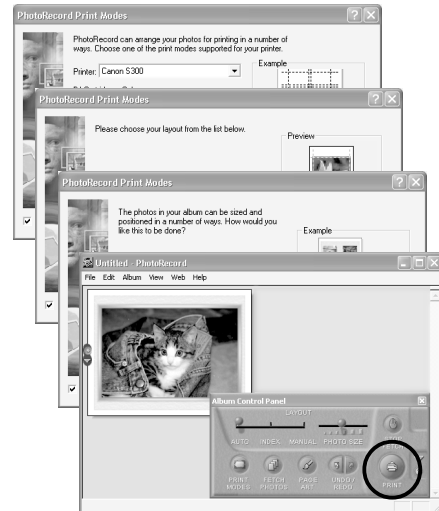


Using the PHOTO Button

PHOTO button equipped on the document cover is convenient to scan a film and print the image to the printer. When you push this button, the film is scanned and the image will be sent to the photo printing program "PhotoRecord". You can easily print the image with this software.



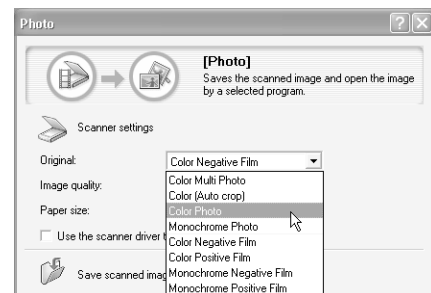
- 1. Place the loaded film guide on the scanner and push the PHOTO button.**
- 2. Scanning automatically starts.**
- 3. When scanning completes, [PhotoRecord Print Modes] wizard starts.**
Select Print Mode, Paper Size and so on in the dialogs.
- 4. The PhotoRecord window opens in which the scanned image appears.**
- 5. Make the printer ready and click the [PRINT] button.**
- 6. In the print dialog, confirm the print settings and click [Print].**



- With some models of Canon Bubble Jet printer, you can perform perforated paper printing.

When you want to scan photos (not films) from the PHOTO button, change the settings of ScanGear Toolbox.

- 1. Start ScanGear Toolbox. (see P.21)**
- 2. Click [Photo] button on the Toolbox toolbar.**
- 3. Select [Color Photo], [Color (Auto crop)] or other photo option in the [Original] item.**
- 4. Click [Apply] and close ScanGear Toolbox.**



The steps of scanning are the same as above.



- The settings of ScanGear Toolbox are available until they are changed.
- Make sure to attach the protective sheet on the scanner document cover, when you scan photos or documents.



Guide to the Software

■ ScanGear CS-U

ScanGear CS-U is the specialized scanner driver (TWAIN driver) that allows you to scan and load images from the scanner.


■ How to Start ScanGear CS-U

ScanGear CS-U is not a stand-alone program that can be started by itself. It is used as a TWAIN driver. Start the application program first, then start ScanGear CS-U from the program. The procedures for starting TWAIN driver varies between programs.

Adobe Photoshop Elements



1. Select [Start], [Programs] or [All Programs], [Adobe], [Photoshop Elements] and [Adobe Photoshop Elements] to start Adobe Photoshop Elements.
2. Click the [File] menu and select [Import], then [CanoScan D1250U2/D1250U2F.]. (see P. 12)

ArcSoft PhotoBase

1. Select [Start], [Programs] or [All Programs], [ArcSoft PhotoBase] and [PhotoBase] to start ArcSoft PhotoBase.
2. Click  (Acquire icon) on the toolbar, or click the [Edit] menu and select [Acquire]. In the Select Source dialog, choose [CanoScan D1250U2/D1250U2F].

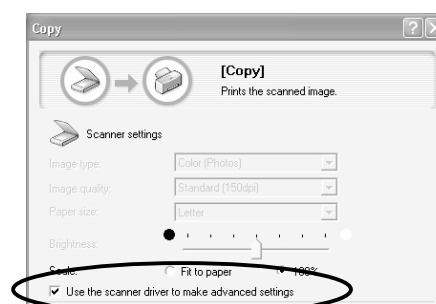


ScanSoft OmniPage Pro

1. Select [Start], [Programs] or [All Programs], [Caere Applications] and [OmniPage Pro 9.0] to start ScanSoft OmniPage Pro.
2. Click  (Scan Image icon) on the toolbar, or open the [Process] menu and select [Scan Image]. If the Scan Image icon on the toolbar displays as , click the arrow and select [Scan Image]. Scanning will be done without displaying ScanGear CS-U window.

ScanGear Toolbox

1. Select [Start], [Programs] or [All Programs], [Canon ScanGear Toolbox 3.1] and [ScanGear Toolbox 3.1] to start Canon ScanGear Toolbox.
2. Click one of the buttons on the toolbar, and select [Use the scanner driver to make advanced settings.] in the settings dialog.



- Canon PhotoRecord cannot scan images from the scanner. You can use this program to edit or decorate the images and print them on a printer or save them in a photo album.



Guide to the Software

■ How to Use ScanGear CS-U

ScanGear CS-U features two selectable modes. Simple Mode has easy-to-use functions, especially for beginners. Advanced Mode provides various settings such as color balance or image quality adjustments.

Simple Mode

All you need to do is selecting Image Type to scan immediately at the optimal settings.

Image Type

Select from Color Screen, Color Photo or other items for your purpose. Resolution is automatically set.

Toolbar

Adjust images easily with the zoom, rotate, auto crop and other buttons.

Preview Button

Previews items and displays the results in the preview area.

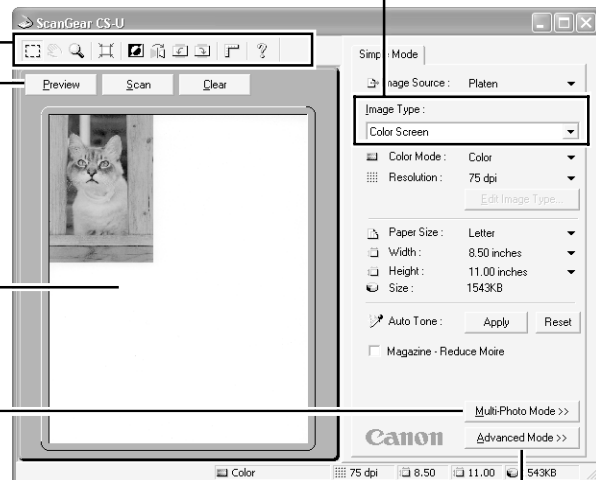
Preview Area

Displays the preview image. Use it to select a scan area or adjust the image.

Multi Photo Mode

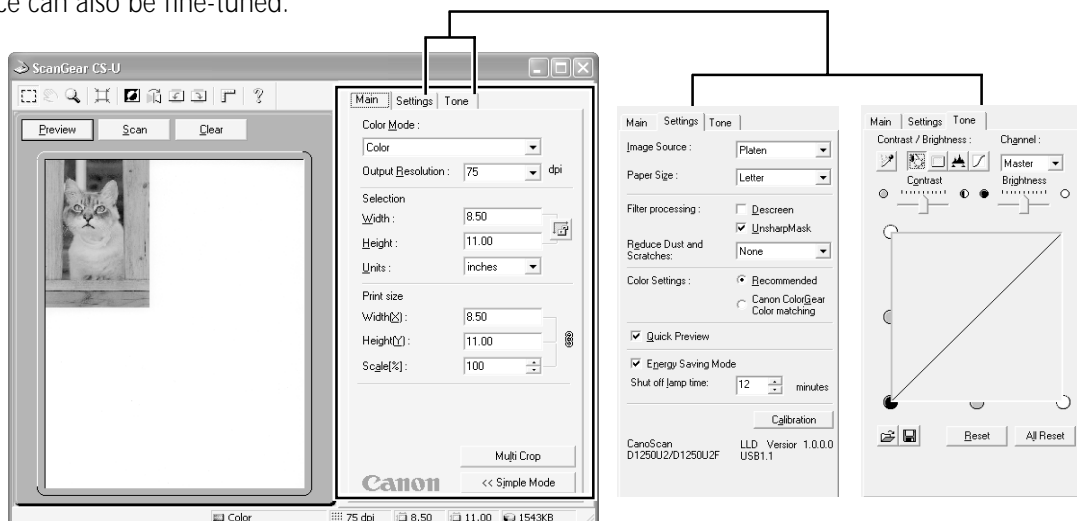
Scans several photos at once and opens them individually in the application window.

Simple Mode/Advanced Mode Switching Button



Advanced Mode

Set the Color Mode and Output Resolution to scan. The image brightness, contrast and color balance can also be fine-tuned.



• For details, please refer to the ScanGear CS-U User's Guide (electronic manual).



Guide to the Software

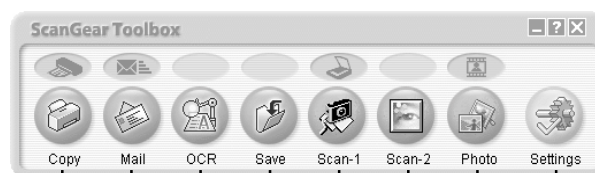
■ ScanGear Toolbox

ScanGear Toolbox is a convenient program which can copy (print) image, attach images to e-mail messages, save images or send images to application programs with simple steps. It also works with scanner's button.

■ How to Start ScanGear Toolbox

Click the [Start] button on the Windows taskbar and select [Programs] or [All Programs], [Canon ScanGear Toolbox 3.1] and [ScanGear Toolbox 3.1].

ScanGear Toolbox Toolbar



Copy Button

Scans and prints images on a printer.

Mail Button

Scans and attaches images to an e-mail message.

OCR Button

Scans newspapers, magazines or books for conversion into editable text with an OCR program.

Save Button

Scans and saves images.

Scan (1-2) Buttons

Scan and send images to the linked application programs.

Photo Button

Scans films or photos and sends images to the linked application program.

Settings Button

Sets the scanner buttons assignments.



- The OCR button, Scan 1-2 buttons and Photo button are automatically set to OmniPage, PhotoBase, Photoshop Elements and PhotoRecord respectively, if all the application programs are installed from the CD-ROMs according to the procedures on page 10 and 11.
- To use the copy (print) function, the printer must be connected and on-line and its printer driver must be installed on the computer.
- To use the e-mail function, a MAPI-compliant (Messaging Application Programming Interface) program, such as Microsoft Outlook, Outlook Express, Eudora or Netscape Messenger, must be installed and enabled.

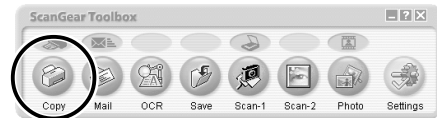


Guide to the Software

■ How to Use ScanGear Toolbox

Example: Copy (Print)

1. Click the [Copy] button.



2. The Copy settings dialog will appear. Change the settings as required.

Image type

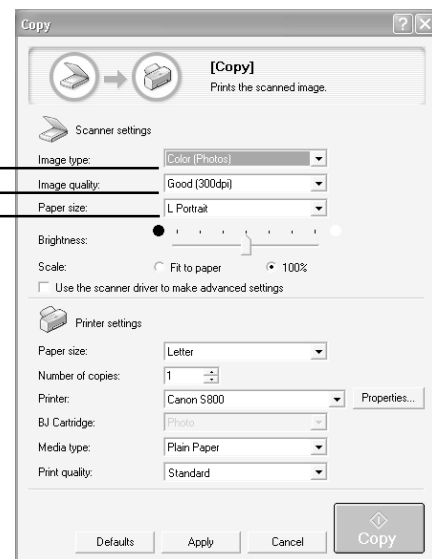
Select an image type from the menu. If you select [Color(Auto crop)], the scanning area is automatically cropped with the size of the item.

Image quality

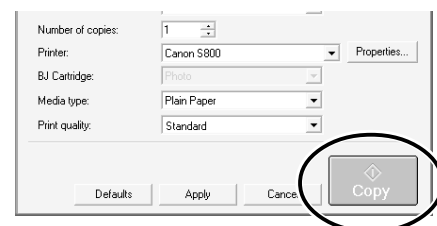
Select a scanning resolution from [Draft], [Standard], [Good] and [Enlarged printing].

Paper size

Select the size of the document you will scan. If you select [Custom], the paper size setting window will appear to allow you to input an accurate document size.



3. Click the [Copy] button.



4. Scanning automatically start, and the image will be printed.



- For further settings and details, please refer to the ScanGear Toolbox User's Guide (electronic manual).



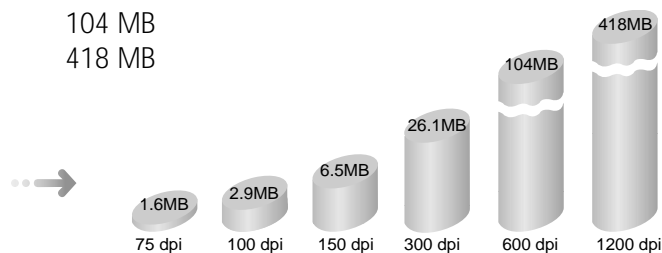
Precautions for Scanning at High Resolutions

Please note that file sizes increase almost exponentially as the resolution is raised when scanning in color mode. Scanning at high resolutions may require more time for scanning and image processing. You are recommended to avoid raising the resolution beyond the minimum requirement to scan in color mode.

■ File Size Estimates for Scanning an Letter/A4 Size Original in Color

	Letter	A4
- 75 dpi	1.58 MB	1.6 MB
- 100 dpi	2.8 MB	2.9 MB
- 150 dpi	6.3 MB	6.5 MB
- 300 dpi	25.2 MB	26.1 MB
- 600 dpi	101 MB	104 MB
- 1200 dpi	404 MB	418 MB

A4 color image

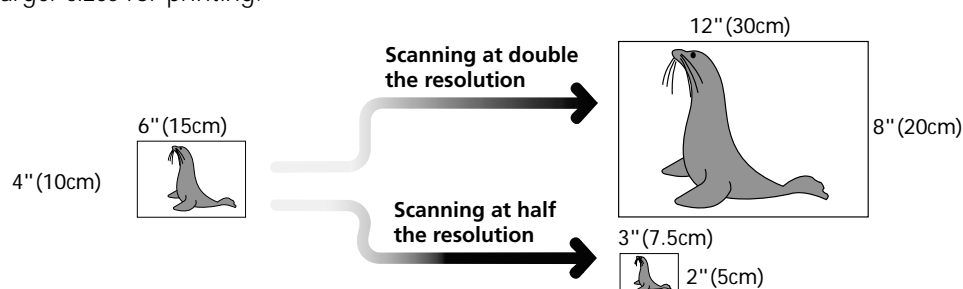


* These numbers are approximate and may differ from actual scan results.

■ Resolution Guidelines

- For uploading to a web site or viewing on a computer monitor, choose 75 dpi
- For scanning print photos and magazine clippings, choose 150 - 300 dpi
- For printing on an inkjet printer, choose a resolution approximately half the printer's rating (180 dpi, 360 dpi, 600 dpi or 720 dpi)

A resolution higher than 600 dpi is effective for scanning relatively small originals that will be blown up to larger sizes for printing.



- The maximum size of files scanned by the bundled PhotoBase program is limited by Windows Me and Windows 98 to 256 MB.





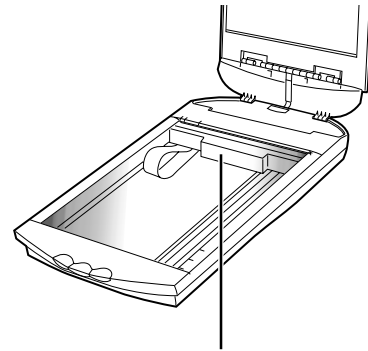
Before Transporting the Scanner

Always lock the scanning unit by pushing the lock switch toward the lock mark before moving or transporting the scanner.

- 1. Unplug the AC adapter from the electrical outlet and detach the USB cable from the computer.**

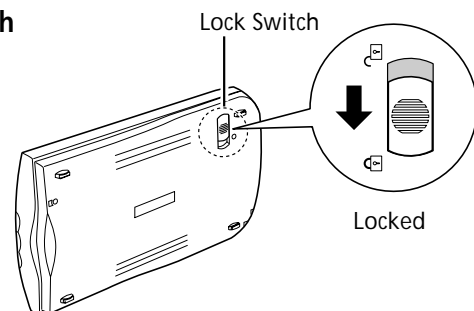
- 2. Confirm the scanning unit is in the home position.**

If it is not in the home position, connect the AC adapter to the electrical outlet. After the scanning unit has completely returned to the scanner's home position, disconnect the AC adapter.



Scanning Unit Home position

- 3. Lock the scanning unit by pushing the lock switch toward the lock mark (🔒).**



- Carrying or transporting the scanner without locking the scanning unit may damage it. Be particularly careful to lock the scanning unit when transporting the scanner in a vehicle.

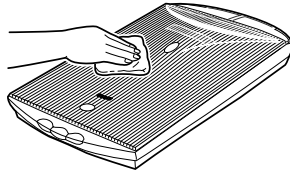


Care and Maintenance

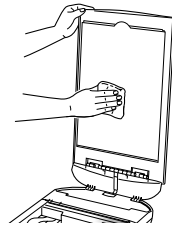
Clean off the dirt and dust that adheres to the exterior, document glass and document cover of the scanner during the course of ordinary operation using the following procedures.

- 1. Unplug the AC adapter from the electrical outlet and detach the USB cable from the computer.**
- 2. When cleaning the document cover or document glass, dampen a clean, soft cloth with water and wring the cloth well. Use the well-wrung cloth to gently remove dirt and dust. Then, thoroughly remove any moisture or water vapor with a soft, dry cloth. Be particularly careful to remove any traces of dirt or liquid when wiping the document glass.**
 - Moisture left on the document glass or cover may damage photographs and other documents as well as produce poor results.
 - Do not dampen the connectors, ports or other metallic components on the scanner's back panel. Immediately remove any moisture that contacts these components by wiping them with a dry cloth.
 - Do not use an excessively wet cloth or apply a liquid directly to any portion of the scanner. Any moisture that enters the interior, the underside of the document glass or the sensors may degrade image quality and lead to malfunctions.
 - Never use substances containing alcohol, thinners or benzene on the equipment. Use of these substances may deform, discolor or dissolve the casing.

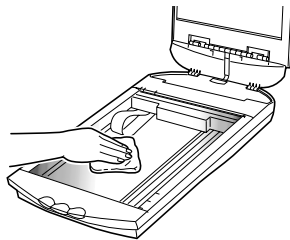
Outer Casing



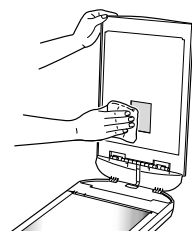
Document Cover



Document Glass



Light Source



Never use substances containing alcohol, thinners or benzene to clean the equipment.



- Do not press heavily on the document glass when cleaning. The document glass may break and injure you.



Specifications

CanoScan D1250U2F			
Scanner Type		Flatbed	
Scanning Element		CCD 6-line color	
Light Source		Cold cathode fluorescent lamp	
Optical Resolution		1200 x 2400 dpi	
Film Adapter Unit		Standard equipped	
Selectable Resolution		25 - 9600 dpi (ScanGear CS-U)	
Scanning Bit Depth	Color	16 bit input / 8 bit output for each color (RGB)	
	Grayscale, B&W	16 bit input / 8 bit output	
Preview Speed ^{*1}		Approx. 8 sec (with A4 size photo / document)	
Scanning Speed ^{*2} (Photo or Document)	Color	USB2.0	4 msec / line (600 dpi), 8 msec / line (1200 dpi)
		USB1.1	16 msec / line (600 dpi), 32 msec / line (1200 dpi)
	Grayscale, B&W	USB2.0	4 msec / line (600 dpi), 8 msec / line (1200 dpi)
		USB1.1	8 msec / line (600dpi, 1200 dpi)
Scanning Speed ^{*2} (Film)	Color, Grayscale, B&W	USB2.0 USB1.1	12.2 -170.8 msec / line
Interface		USB2.0 / USB1.1	
Maximum Document Size		A4 / Letter:216 x 297mm (8.5 x 11.7 in.)	
Types of Film		35mm Color Negatives / Positives 35mm B&W Negatives / Positives	
Scanner Buttons		SCAN, COPY, E-MAIL, PHOTO	
Operating Range	Temperature	10° to 35° C (50° to 95° F)	
	Humidity	10% to 90% RH, 20% to 80% RH when scanning film (without condensation formation)	
Power Requirements		AC adapter (100 / 120 / 230 / 240 V) ^{*3}	
Power Consumption		In operation: 15 watts maximum Stand-by: 5 watts (using supplied AC adapter)	
Maximum Exterior Dimensions		257 x 460 x 71 mm (10.2 x 18.4 x 2.8 in.)	
Weight		Approx. 2.5 kg (5.3 lbs.)	

*1 Calibration processing time is not included.

*2 Transfer time to computer is not included.

*3 Type of AC adapter depends on the area where the scanner is purchased.

• Specifications are subject to change without notice.



System Information

This form should be used to record the operating environment of the purchased scanner. If any problems occur with the scanner, you will need this information when you contact our Customer Support Help Desk. Be sure to record the information and store it in a safe location.

- This information is also required to request a repair under warranty. Make sure you record the information and store it in a safe location.
- Guaranteed servicing for this equipment will expire five years after production ceases.

Date of Purchase:

Dealer:

Tel:

Dealer Address:

Scanner Model: CanoScan D1250U2F

Serial Number (on the back of the equipment):

• About the Computer Used

Manufacturer:

Model:

CPU:

Clock Speed:

MHz

Memory Capacity (RAM):

MB

Hard Disk Capacity:

MB

Space Available:

MB

OS : Windows ☐ XP ☐ Me ☐ 2000 ☐ 98

Monitor Type:

Monitor Size:

inches

Printer:

Manufacturer:

Type of Printer:

Printer Resolution:

dpi

Installed Virus Protection Program:

Installed Compression Program:

On-Board Expansion Cards:

Attached Peripherals:

Name of Network Connected:



As an ENERGY STAR Partner, Canon Inc. has determined that this model meets the ENERGY STAR Program for energy efficiency.

The International ENERGY STAR Office Equipment Program is an international program that promotes energy saving through the use of computers and other office equipment. The program backs the development and dissemination of products with functions that effectively reduce energy consumption. It is an open system in which business proprietors can participate voluntarily. The targeted products are office equipment such as computers, displays, printers, facsimiles, copiers, scanners and multifunction systems. Their standards and logos are uniform among participating nations.