

BUBBLE JET PRINTER

i455

Quick Start Guide

Table of Contents

Preface	1
Shipping Materials	1
Introduction	1
Setting Up	2
Preparing the Printer	2
Connecting the Printer to the Computer	3
Installing the Print Head	4
Loading Paper	7
Installing the Printer Driver	8
Aligning the Print Head	12
Basic Operations	16
Printing with Windows	16
Printing with Macintosh	18
Print Head Maintenance	20
Appendix	21
Printing Photographs Directly from a Digital Camera	21
Notes on Handling the USB Interface (for Windows Users)	22
For Further Details...	22

Exif Print

This printer supports Exif 2.2 (also called “Exif Print”).

Exif Print is a standard for enhancing the communication between digital cameras and printers. By connecting to an Exif Print-compliant digital camera, the camera’s image data at the time of shooting is used and optimized, yielding extremely high quality prints.

Canadian Radio Interference Regulations

This digital apparatus does not exceed the Class B limits for radio noise emissions from a digital apparatus as set out in the interference-causing equipment standard entitled “Digital Apparatus,” ICES-003 of the Industry Canada.

Cet appareil numérique respecte les limites de bruits radioélectriques applicables aux appareils numériques de Classe B prescrites dans la norme sur le matériel brouilleur NMB-003 d'Industrie Canada intitulée « Appareils numériques ».

International ENERGY STAR® Program

As an ENERGY STAR® Partner, Canon Inc. has determined that this product meets the ENERGY STAR guidelines for efficiency.



The International ENERGY STAR® Office Equipment Program is a global program that promotes energy saving through the use of computer and other office equipment. The program backs the development and dissemination of products with functions that effectively reduce energy consumption. It is an open system in which business can participate voluntarily. The targeted products are office equipment such as computers, monitors, printers, faxes and copiers.

Their standards and logos are uniform among participating nations.

Power Requirements

Never use a power supply voltage other than that supplied in the country of purchase. Using the incorrect voltage could cause a fire or electric shock. The correct power supply voltages and frequencies are as follows:

AC 100-127V, 50/60Hz

AC 220-240V, 50/60Hz

Preface

Shipping Materials

Thank you for purchasing a Canon Bubble Jet Printer.

Check that all the following items are in the box. If anything is missing or is damaged, contact your Canon Authorized Dealer or Sales Representative.

- ☐ Printer
- ☐ Setup Software & User's Guide CD-ROM
- ☐ Quick Start Guide
- ☐ Print Head
- ☐ 2 Ink Tanks

* A USB cable should be purchased separately according to your computer. For details on cable specifications, refer to page 3.

Introduction

For information about printing when you connect a PictBridge-compliant digital camera, refer to *Direct Printing for PictBridge-compliant Digital Cameras*.

This Quick Start Guide uses the following symbols to indicate important information. Always observe the instructions indicated by these symbols.

Warning

Instructions that, if ignored, could result in death or serious personal injury caused by incorrect operation of the equipment. These must be observed for safe operation.

Caution

Instructions that, if ignored, could result in personal injury or material damage caused by incorrect operation of the equipment. These must be observed for safe operation.

Also read the Safety Precautions in the User's Guide. Observe the warnings and cautions to avoid personal injury or damage to the printer.

Trademark Notices

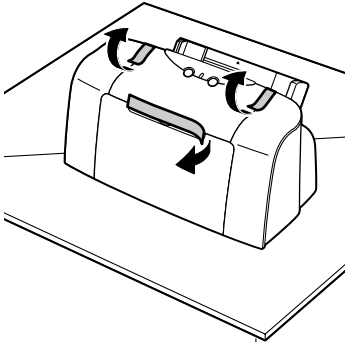
- Canon® is a registered trademark of Canon Inc.
- BJ is a trademark of Canon Inc.
- Microsoft® and Windows® are registered trademarks of Microsoft Corporation in the U.S. and other countries.
- Apple, Mac, Macintosh are trademarks of Apple Computer, Inc., registered in the U.S. and other countries.
- All other trademarks and registered trademarks appearing in this Quick Start Guide are the property of their respective owners.

Copyright ©2003 CANON INC.

All rights reserved. No part of this publication may be transmitted or copied in any form whatsoever without the express written permission.

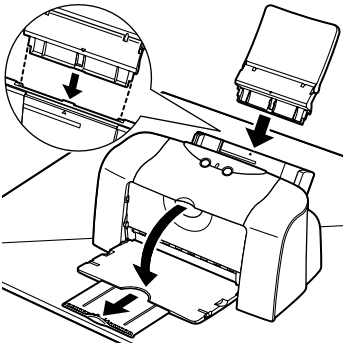
Setting Up

1 *Preparing the Printer*



- 1** Place the printer on a flat surface.
- 2** Remove the tape from the printer as shown.

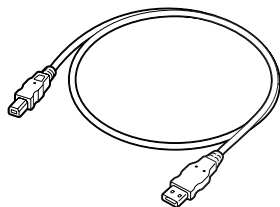
The tape position is subject to change.



- 3** Attach the paper rest to the sheet feeder.
- 4** Pull out the output tray.

2 Connecting the Printer to the Computer

Use a USB cable.



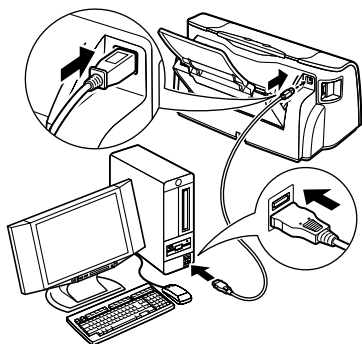
Recommended: Canon or other computer manufacturer cable, up to 5 meters in length.

→ Notes

- If your computer has an earth connection, make sure that this is attached.
- If you do not intend to use the printer for a long period of time, unplug the power cord from the power outlet after turning off the printer.

Follow the steps below to install the printer driver correctly.

- 1** Ensure that the printer and the computer are switched off.
- 2** Connect the cable.



→ Note

If the Add New Hardware Wizard or Found New Hardware Wizard screen appears when carrying out the following operations, click **Cancel** and turn off the computer.

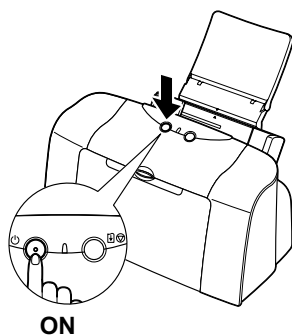


3 Installing the Print Head

Warning

- Never attempt to plug the power cord into the power outlet or unplug the power cord when your hands are wet.
- Never damage, modify, stretch, or excessively bend or twist the power cord. Do not place heavy objects on the power cord.
- Never use any power supply other than the standard power supply available in the country of purchase. Using the incorrect voltage and frequency could cause a fire or electric shock.
- Always push the plug all the way into the power outlet.

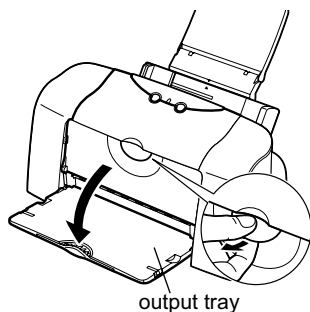
■ Installing the Print Head



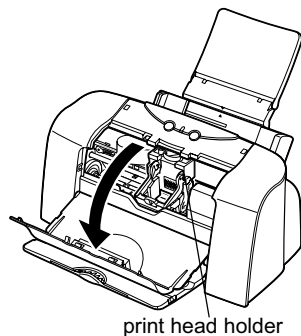
1 Plug the printer in.

2 Turn on the printer. Do NOT turn on the computer yet.

The POWER lamp flashes and the printer begins to operate. Wait until the POWER lamp remains fully lit.

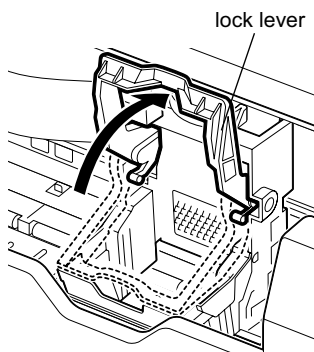


3 Open the output tray.



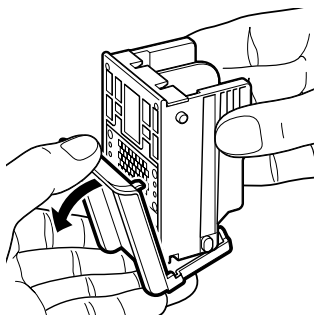
4 Open the front cover.

The print head holder moves to the center.



5 Raise the lock lever.

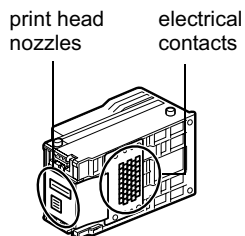
Do not touch internal parts other than the lock lever.



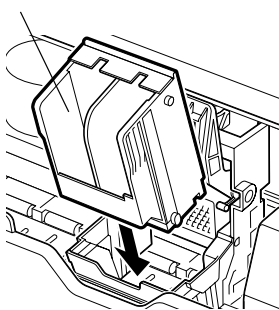
6 Remove the protective cap from the print head.

→ Notes

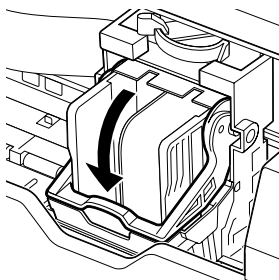
- Do not touch the print head nozzles or electrical contacts.
- Do not attempt to reattach the protective cap once it has been removed.



print head



7 Place the print head in the holder.



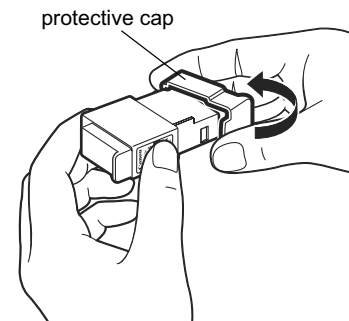
8 Lock the print head into place by lowering the lever.

Do not touch the lock lever once the print head has been installed.

■ Installing the Ink Tanks

⚠ Caution

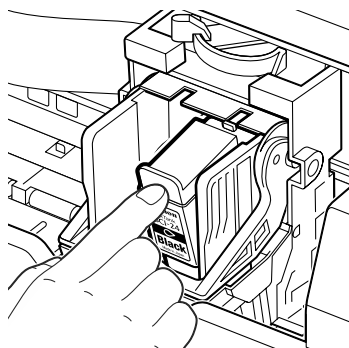
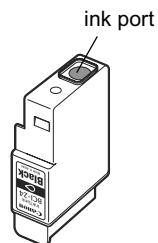
- For safety reasons, store ink tanks out of the reach of small children.
- Do not drop or shake ink tanks as this may cause the ink to leak out and stain your clothes and hands.



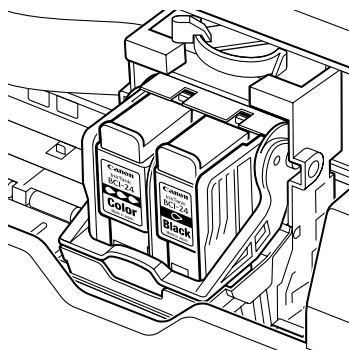
- 1** Take out the black ink tank.
- 2** Hold the ink tank as shown in the diagram and remove the protective cap.

→ Notes

- Do not touch the ink port.
- Do not attempt to reattach the protective cap once it has been removed.



- 3** Insert the black ink tank into the right-hand slot.
- 4** Press the tab until it clicks into place.



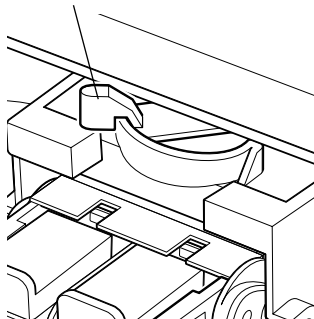
- 5** Use the same procedure to install the color ink tank in the left-hand slot.
- 6** Close the front cover.

Wait until the POWER lamp remains fully lit (about 60 seconds).

4 Loading Paper

■ Loading A4 (Letter) Size Plain Paper

paper thickness lever

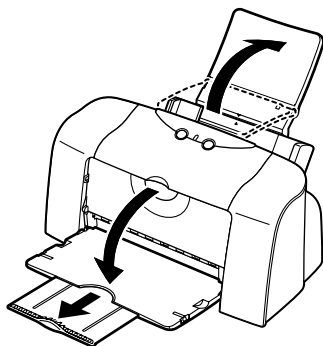


- 1 Open the front cover.
- 2 Move the paper thickness lever at the top of the print head holder to the left position. Close the front cover.

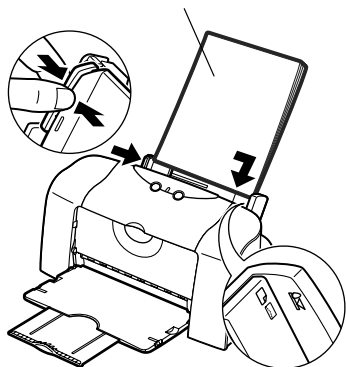
➔ **Note**

Set the paper thickness lever to the left when using plain paper, to the right when using thick paper. Refer to the User's Guide for information on loading envelopes and other media.

- 3 Pull out the paper rest and the output tray as shown.



print side



- 4 To avoid paper jams, fan the stack to remove static cling, then align the edges of the stack by tapping it on a flat surface.
- 5 Load the paper, aligning it with the right side of the sheet feeder.

You can load a maximum of 100 sheets of plain paper. Do not exceed this limit.
- 6 Press the paper guide and slide it against the left side of the stack of paper.

You now need to install the printer driver:

Windows: Go to page 8

Mac OS X: Go to page 10

5 Installing the Printer Driver

■ Installing the Printer Driver – Windows

➔ Notes

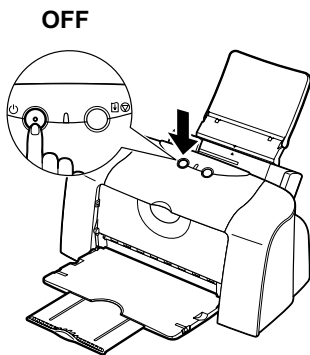
- Do not disconnect the cable or remove the CD-ROM during the installation. The driver cannot be correctly installed.
- The screens below refer to Windows XP installation. Screen may differ depending on the operating system you are using.
- When installing the printer driver in Windows XP or Windows 2000, log on to the system as a member of the **Administrators** group.
- The Setup Software & User's Guide CD-ROM contains the application software. If you want to install the application software, click **Install** on step 7. Internet Explorer 4.0 or later must be installed for Easy-PhotoPrint.

If the following screen appears automatically, click **Cancel** and follow steps 1 to 8 to install the printer driver.



Special Notes for Windows 98 or Windows Me USB Users

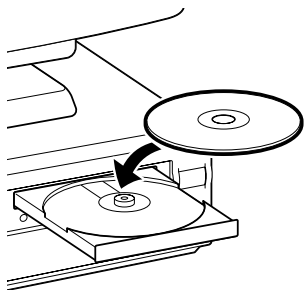
Click **Cancel** to quit the screen and turn off the printer. Next, remove and replace the USB cable connected to your computer.



1 Ensure that the printer and computer are switched off.

2 Turn on the computer and start Windows. If any applications automatically run, quit them.

Disable any virus detection programs.
Do NOT turn the printer on at this stage.



3 Place the Setup Software & User's Guide CD-ROM in the CD-ROM drive.

Notes

- If the CD-ROM does not run automatically, click **Start** and select **My Computer**, and then double-click the CD-ROM icon. For non-XP Windows users, double-click **My Computer** in the Windows screen, and the CD-ROM icon.
- If the language selection screen appears, select a language, then click **Next**.



4 Follow the instructions displayed on screen. When the screen shown on the left is displayed, click **Install**.



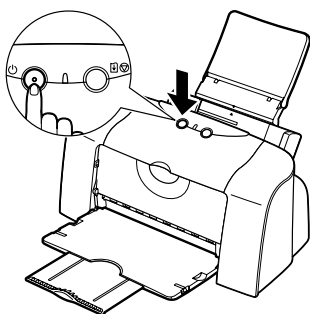
5 When the screen shown on the left appears, turn the printer on.

If the printer is recognized, the printer driver will be automatically installed.

Note

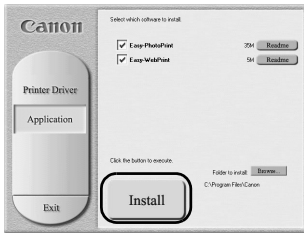
If the connection is not recognized, refer to the section "Notes on Handling the USB Interface (for Windows Users)" on page 22.

ON



6 Click **OK**.

Before you use the printer, you must carry out print head alignment on page 12.



7 If you want to install the application software, click **Install**.

Follow the instructions on screen to install the application software. When the message “Software installation is completed.” is displayed, click **OK**.

8 Click **Exit**.

➔ Notes

- The User’s Guide is also installed when you install the printer driver. To view the User’s Guide, double-click the User’s Guide short-cut icon on the desk top.
- If a message prompting you to restart the computer is displayed, click **Yes**.
- For further information of applications and how to start them, refer to “Applications Included in the CD-ROM Package” on page 23.

■ Installing the Printer Driver – Macintosh

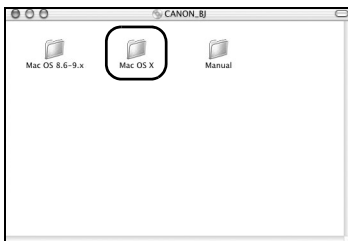
➔ Notes

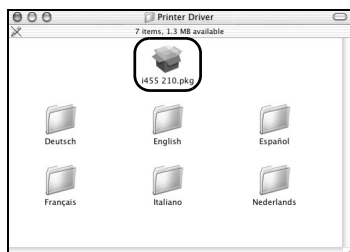
- Do not remove or insert the USB cable during installation, as this may result in the computer or printer not operating normally.
- Before installing the driver, disable all virus detection programs and automatically loading programs or remove them from your system folder.
- The Setup Software & User’s Guide CD-ROM contains the application software, Easy-PhotoPrint, to import and print image data. If you want to install Easy-PhotoPrint, double-click the application folder, then double-click the Easy-PhotoPrint folder, and **Installer**.
- For Mac OS 8.6-9.x user’s, refer to the Printer Driver Guide for Mac OS 9 for instructions on how to install the printer driver.

1 Turn on the Mac.

2 Place the Setup Software & User’s Guide CD-ROM in the CD-ROM drive.

3 Double-click the **Mac OS X** folder, and then double-click the **Printer Driver** folder.

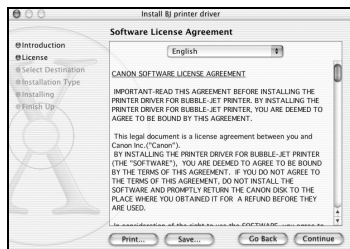




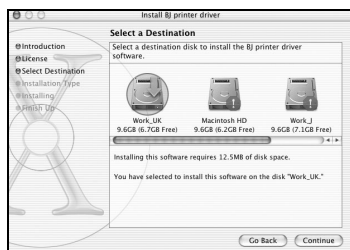
4 Double-click **i455 210.pkg**.

5 Enter an administrator name and a password, then click **OK**.

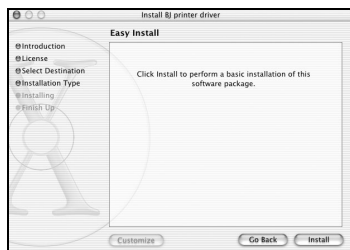
6 Click **Continue**.



7 Read the License Agreement and click **Continue**, then click **Agree**.



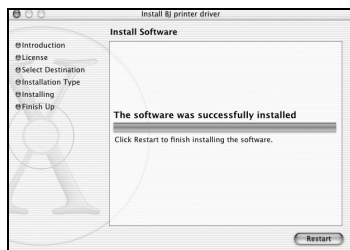
8 Select a destination to where you want to install the printer driver, and click **Continue**.



9 Click **Install**.

10 A message asking for your confirmation to restart your computer is displayed on the screen. Read the message, then click **Continue Installation**.

Software installation will start.



11 Software installation is complete. Restart your computer.

Before you use the printer, you must carry out print head alignment on page 14.

6 Aligning the Print Head

This operation must be carried out when using the printer for the first time. Aligning the print head positions allows you to print without shifts in the color registration.

■ Aligning the Print Head – Windows

- 1 Click **Start** and select **Control Panel**, **Printers and Other Hardware**, and then **Printers and Faxes**.

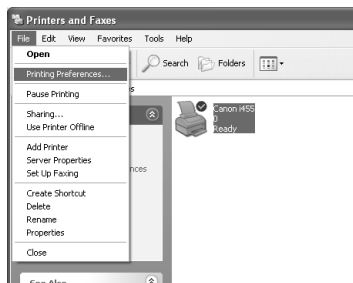
➤ **Note**

For non-XP Windows users, click **Start**, then select **Settings**, **Printers**.

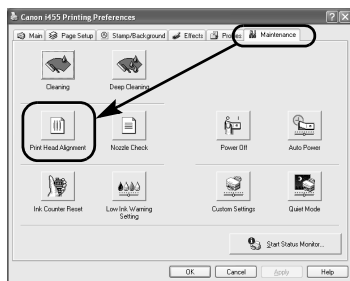
- 2 Click the icon for your printer.
- 3 Open the **File** menu and select:

- Windows XP/Windows 2000 → [Printing Preferences...]
- Windows Me/Windows 98 → [Properties]

to open the setting screen.

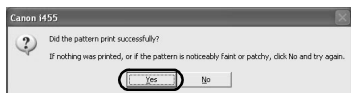


- 4 Click the **Maintenance** tab, and click **Print Head Alignment**.



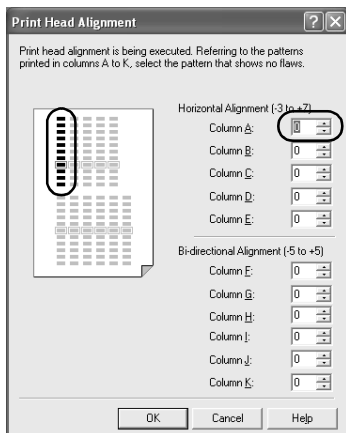
- 5 Check that paper is loaded in the printer and click **OK**. If a message warning you not to perform other operations is displayed, click **OK**.

It takes about 60 seconds to start printing.

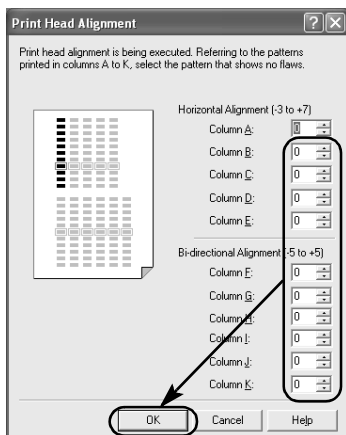


- 6** After the pattern is printed, click **Yes**.

If the pattern is not printed successfully, open the front cover and ensure that the ink tanks are correctly installed.



- 7** Look at the print-out. From the patterns in Column A, select the most even, least irregular pattern and enter the number.

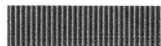


- 8** In the same way, one by one, select the most even patterns printed with the least irregularities from each of Columns B to K, enter their numbers, and click **OK**.

If it is difficult to pick the best pattern on Column H, pick the setting that produces the least noticeable vertical white stripes.



Less noticeable white stripes



More noticeable white stripes

- 9** Click **OK**.

This completes the printer setup. The printer is now ready to use.



■ Aligning the Print Head – Macintosh

➔ Note

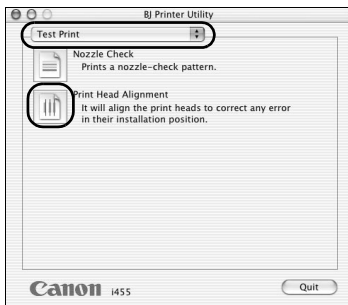
For Mac OS 8.6-9.x users, refer to the Printer Driver Guide for Mac OS 9 for instructions on how to align the print head.

1 Open the BJ Printer Utility dialog box.

- (1) Double-click the hard disk icon where the printer driver was installed, the **Applications** folder, and the **Utilities** folder.
- (2) Double-click the **Print Center** icon.
- (3) Select **i455** from the **Name** list and click **Configure**.
- (4) Select **i455** from the **Product** list and click **Select**.

2 Print the pattern.

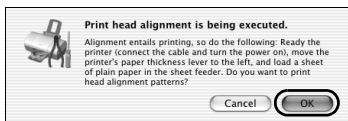
- (1) Select **Test Print** from the pop-up menu.
- (2) Click **Print Head Alignment**.



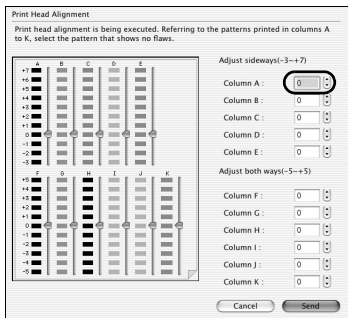
3 Check that paper is loaded in the printer and click OK.

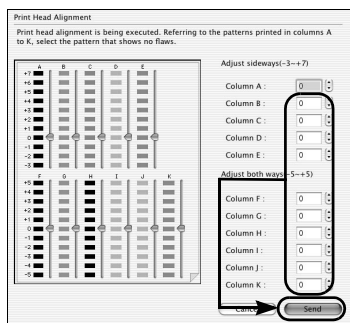
It takes about 60 seconds to start printing.

If the pattern is not printed successfully, open the front cover and ensure that the ink tanks are correctly installed.



4 Look at the print-out. From the patterns in Column A, select the most even, least irregular pattern and enter the number.



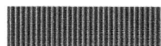


- 5** In the same way, one by one, select the most even patterns printed with the least irregularities from each of Columns B to K, enter their numbers and click **Send**.

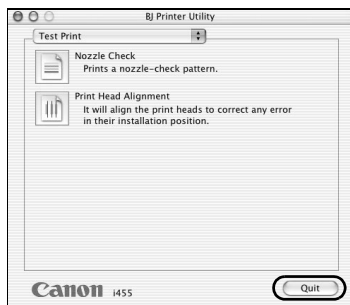
If it is difficult to pick the best pattern on Column H, pick the setting that produces the least noticeable vertical white stripes.



Less noticeable
white stripes



More noticeable
white stripes



- 6** Click **Quit**.

This completes the printer setup.
The printer is now ready to use.

Basic Operations

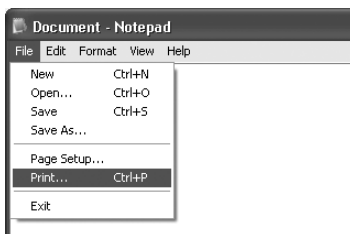
⚠ Caution

- If you detect smoke, unusual smells or strange noises around the printer, immediately switch the printer off and always unplug the printer. Contact your local Canon service representative.
- To avoid injury, never put your hand or fingers inside the printer while it is printing.

Printing with Windows

Adjusting the print settings according to your needs allows you to produce better quality prints. In this section, we will use WordPad for the purpose of explanation. The procedures you use and the screens that appear on your computer may differ according to the application that you use.

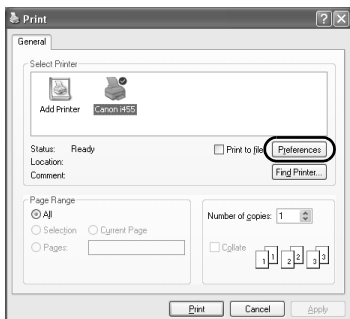
■ Printing



1 Print the document from the application.

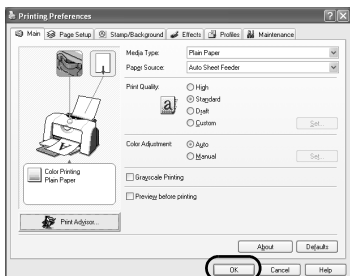
On the **File** menu, click **Print**.

Check the application's users manual for the actual procedures.



2 Ensure that your printer is selected, then click:

- Windows XP → [Preferences]
- Windows Me/Windows 98 → [Properties]
- Windows 2000 → [Main] tab



3 Specify the required settings and click **OK**.

➡ Note

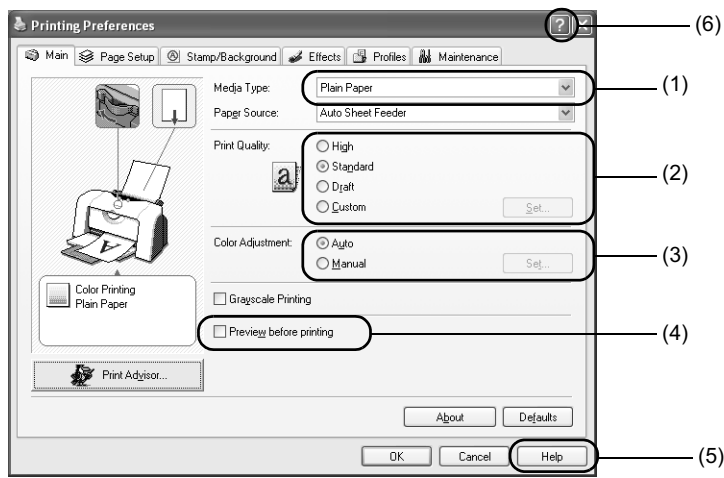
If you use anything other than plain paper, please refer to “Basic Print Settings” on page 17.

4 To start printing, click **OK**.

Printing will start in a few moments.

■ Basic Print Settings

For the best print quality, specify the minimum requirement settings in the **Main** tab. To get the best results, ensure that you select the media loaded in the printer when printing on paper other than plain paper.



(1) Media Type	Select the media loaded in the printer.
(2) Print Quality	Select one option from High , Standard and Draft . Select Custom to set the print quality manually.
(3) Color Adjustment	If you wish to control the color adjustment settings in more detail, select Manual .
(4) Preview before printing	Select this to check the layout before printing.
(5) Help	Click this for a more detailed explanation of the functions in the tab. (This may not appear in Windows XP or Windows 2000. If this happens, click Start then select All Programs (or Programs) - Canon i455 - Guide).
(6) ?	Click this to change the cursor shape to ?. By clicking on the item's name with this ? cursor, an explanation will be displayed.

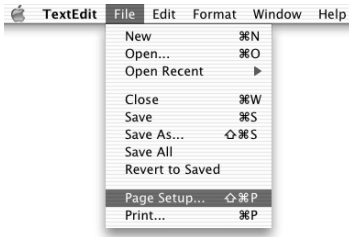
➡ Notes

- Clicking the **Print Advisor** allows you to change to the most appropriate print settings simply by answering questions when prompted.
- Use the application to set the paper size and paper orientation. Before printing, open the settings screen and check that the **Page Size** in the **Page Setup** tab is the same as that specified within application.
- Refer to the User's Guide for more information about printer driver functionality.

Printing with Macintosh

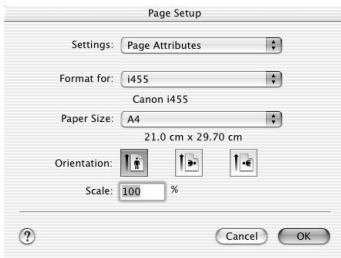
Adjusting the print settings according to your needs allows you to produce better quality prints.

■ Printing



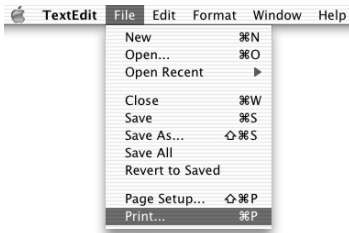
- 1 Open the **Page Setup** dialog box in your application.

On the **File** menu, click **Page Setup**. Check the application's users manual for the actual procedures.



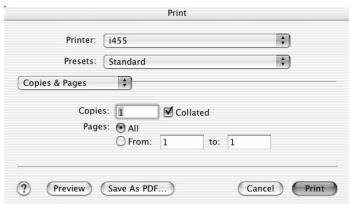
- 2 Specify the page setup.

For details, refer to “Page Setup” on page 19.



- 3 Open the Print dialog box in your application to print the document.

On the **File** menu, click **Print**. Check the application's user's manual for the actual procedures.



- 4 Specify the print settings according to your requirements.

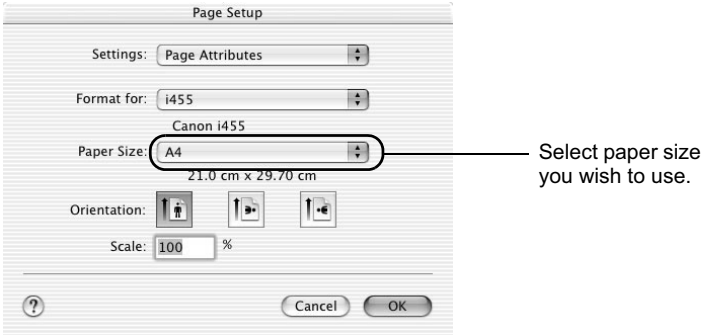
For details, refer to “Basic Print Settings” on page 19.

- 5 Click **Print**.

Printing will start in a few moments.

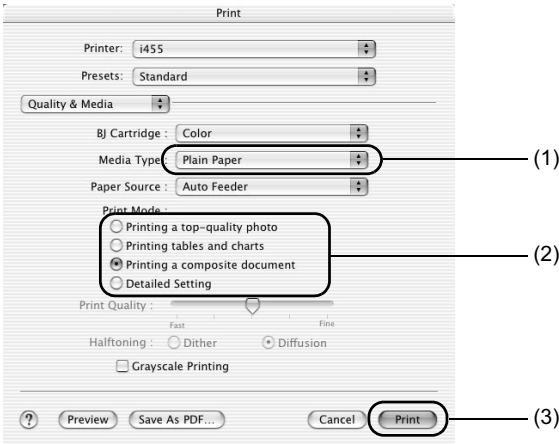
■ Page Setup

Use the **Page Setup** dialog box to specify the paper size settings.




■ Basic Print Settings

For the best print quality, specify the minimum requirement settings in the **Print** dialog box. Select **Quality & Media** from the pop-up menu to change the display of the dialog box. To get the best results, ensure that you select the media loaded in the printer when printing on paper other than plain paper.



(1) Media Type	Select the media loaded in the printer.
(2) Print Mode	Select the type of document you want to print. To specify more detailed settings for the print quality, click Detailed Setting .
(3) Print	Click this to start printing.

➡ Notes

- See Help for more information about other printer driver functions.
Click  in the **Page Setup** dialog box or the **Print** dialog box.
- Refer to the User's Guide for more information about printer driver functions.

Print Head Maintenance

■ If Blurring Occurs or If a Specific Color Does Not Print

Perform print head cleaning to improve the print quality. Ensure that the printer is turned on and follow the instructions below.

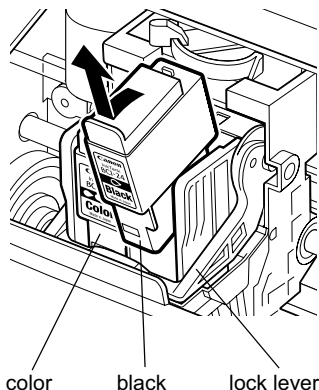
- Windows
Open the printer driver settings screen and click the **Maintenance** tab. Click **Cleaning**. See page 12 for details on how to open the setting screen.
- Macintosh
Open the **BJ Printer Utility**, and select **Cleaning** from the pop-up menu. Click **Cleaning**. See page 14 for details on how to open the **BJ Printer Utility**.

■ When the Printer Runs out of Ink

Replace the empty ink tank with a new one.
Specify the following ink tanks when purchasing.

Ink Tank BCI-24 Color

Ink Tank BCI-24 Black



1 Open the front cover and remove the empty ink tank.

Do not touch the lock lever.

2 Install the new ink tank.

Close the front cover when finished.

➡ **Note**

When you enable the low ink warning, reset the ink counter of the ink tank installed.
Refer to the User's Guide for more detailed procedures and information about maintenance.

Appendix

Printing Photographs Directly from a Digital Camera

Connecting a PictBridge compliant camera or Canon digital camera with the Bubble Jet Direct function to the printer allows you to print recorded images directly without using a computer. Connect the USB cable that came with your digital camera. This section describes how to operate a “Bubble Jet Direct” compatible digital camera. Refer to “Direct Printing for PictBridge-compliant Digital Cameras” for more information about “PictBridge”.

■ Media Types for Digital Camera

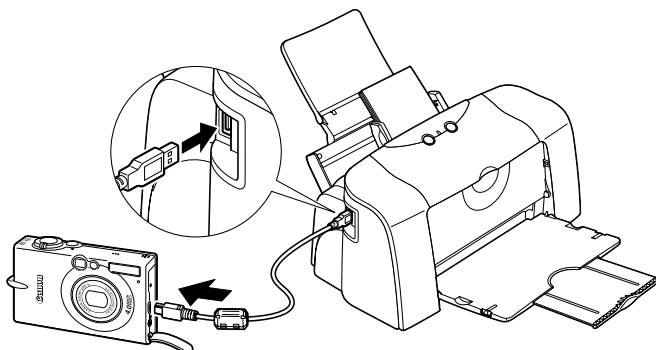
When you connect a digital camera, you can use the following media:

Digital Camera Setting	Media Type
Card #1	Photo Paper Pro 4" x 6" / 101.6 × 152.4 mm
Card #2	Photo Paper Plus Glossy 4" x 6" / 101.6 × 152.4 mm
Card #3	Photo Paper Plus Glossy 5" x 7" / 127.0 × 177.8 mm
LTR	Photo Paper Pro or Photo Paper Plus Glossy Letter
A4	Photo Paper Pro or Photo Paper Plus Glossy A4

■ Printing from a Digital Camera

- 1 Ensure that the printer is turned on.
- 2 Load the paper on the paper rest.
- 3 Ensure that the digital camera is turned off.
- 4 Connect the digital camera and printer with the USB cable that came with the digital camera.

The power of the digital camera automatically turns on.
If not, manually turn on the power.



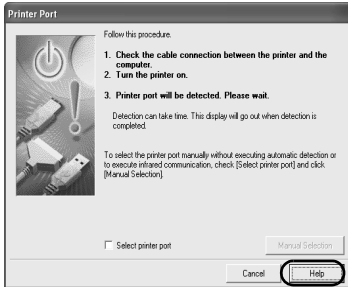
- 5 Start printing using the print function of the digital camera.

Notes on Handling the USB Interface (for Windows Users)

If installation of the printer driver does not proceed as instructed in this Quick Start Guide, there may be a problem with the USB driver installation.

Try reinstalling the printer driver.

■ Reinstalling



If you cannot proceed beyond the **Printer port** screen:

- 1** Click **Cancel**.
- 2** When the **Terminate Installation** screen is displayed, click **OK**.
- 3** Click **Exit**, then remove the CD-ROM.
- 4** Turn the printer off.
- 5** Restart the computer.
- 6** Reinstall the printer driver (see page 8).

For Further Details...

For more information, place the Setup Software & User's Guide CD-ROM in the CD-ROM drive.

■ User's Guide Contents

The "User's Guide" is HTML manual you can browse through on your computer.

Contents

- Printer parts and their functions
- Further printing techniques
- Routine maintenance
- Printing media
- Troubleshooting
- Specifications

■ How to View the User's Guide

For Windows

Double-click the **User's Guide** short-cut icon on the desk top, or select **All Programs (or Programs)** from the **Start** menu, then **Canon i455 - User's Guide**.

For Macintosh

- (1) Load the CD-ROM in your computer.
- (2) Double-click the **Manual** folder.
- (3) Double-click the **User's Guide** folder.
- (4) Select a language folder.
- (5) Double-click the icon for the **i455_UG_ENG.htm** file.

■ Applications Included in the CD-ROM Package

Easy-PhotoPrint (Windows/Macintosh)

You can make a Borderless Printing easily and quickly, just by selecting a photograph taken with a digital camera and the paper type on which to print. You can also use simple editing features such as trimming and image rotation.

It is Exif Print (Exif 2.2) compatible.

Easy-WebPrint (Windows)

You can easily print homepages displayed on Internet Explorer or pages from User's Guide (HTML manual of this printer) in full size.

Easy-WebPrint automatically adjusts the layout when printing a screen.

This feature enables you to print a screen without its right end being cut.

This application is a plug-in for Internet Explorer, and its toolbar is automatically added to Internet Explorer after installation.

■ BJ Printer Driver Systems Requirements

For Windows

- Use a computer equipped on which Windows XP, Windows 2000, Windows Me, or Windows 98 can operate.
- USB* interface
- CD-ROM drive
- Available hard-disk space for printer driver installation (including temporary files)

Windows XP/Windows 2000: 65MB

Windows Me/Windows 98: 30MB

(Including the capacity for the electric manual)

* USB operation can only be guaranteed on a PC with pre-installed Windows XP, Windows 2000, Windows Me, or Windows 98. (This includes Windows XP, Windows 2000, or Windows Me upgraded from pre-installed Windows 98 or later)

For Macintosh

- Use a Macintosh series computer equipped with USB interface on which Mac OS X v.10.2.1 or later or Mac OS 8.6-9.x can operate.
- Available hard-disk space for printer driver installation

Mac OS X v.10.2.1 or later: 100 MB

Mac OS 8.6-9.x: 30 MB

- The following functions are not supported when using Mac OS X v.10.2.1 or later:
 - Duplex Printing
 - Photo Optimizer Pro

Additional Systems Requirements for Electric Manual

- Pentium® 75 MHz equivalent or higher processor (Pentium® 133MHz equivalent or higher processor recommended)
- 2x or higher CD-ROM drive (4x or higher recommended)
- Microsoft Internet Explorer 5.0 or later

