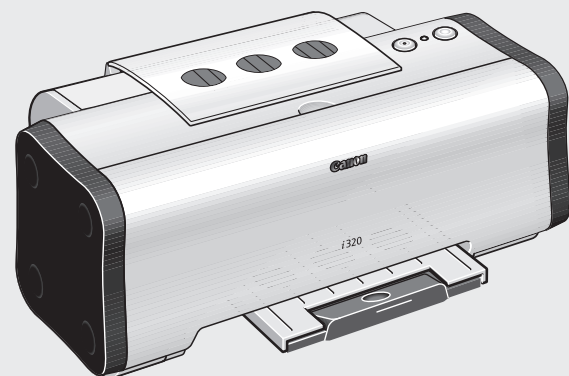
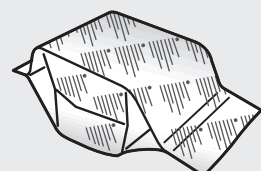


### 1 Unpack the Printer

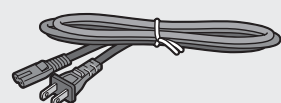
- Carefully remove all items from the box.



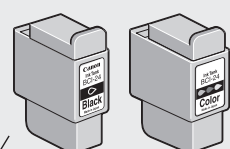
i320 Series  
Bubble Jet Printer



i320 Print Head



Power Cord



Ink Tanks

BCI-24 Black

BCI-24 Color

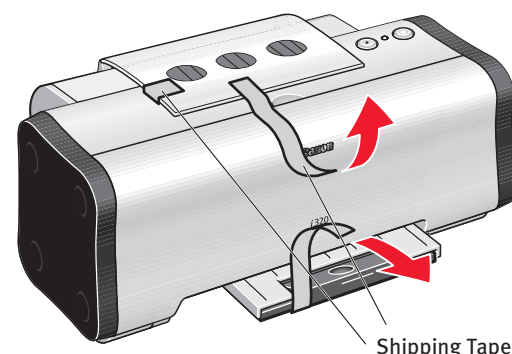


Documentation  
and Software Kit

**NOTE:** The "i320 Setup Software & User's Guide" CD-ROM contains printer drivers, software applications and electronic manuals.

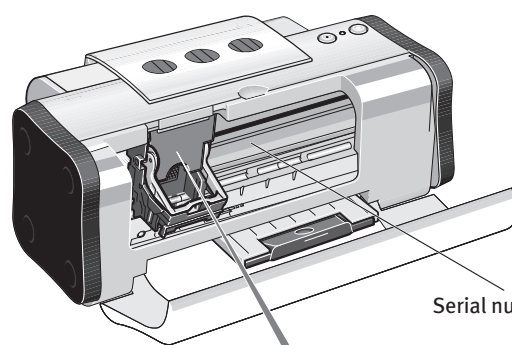
### 2 Prepare the Printer

- Remove the shipping tape from the printer.



Shipping Tape

- Open the front cover. Remove the packing material from the print head holder.



Serial number

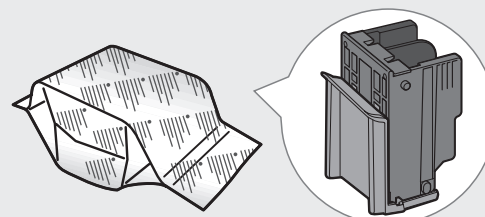
Packing material

Print head holder

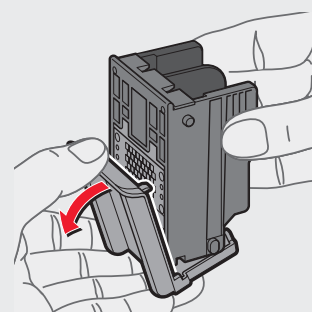
**NOTE:** The serial number is located to the right of the print head. You will need this to register the product.

### 3 Install the Print Head

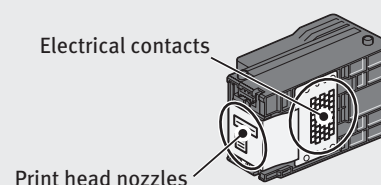
- Remove the print head from its package.



- Turn the print head over, then remove the orange protective cap.



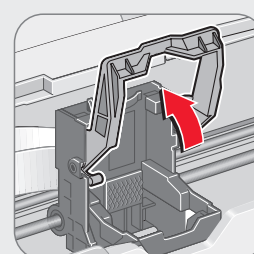
**NOTE:** Do not touch the electrical contacts.



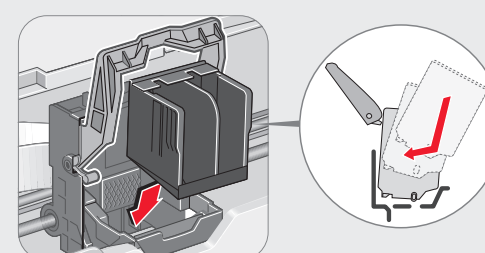
Electrical contacts

Print head nozzles

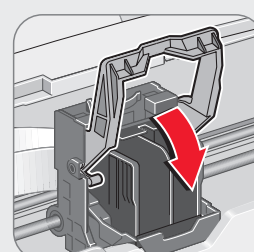
- Raise the gray lock lever.



- Slide the print head into the holder until it is securely seated.

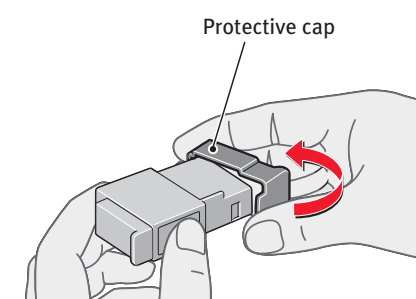


- Lower the gray lock lever until it locks into place.



### 4 Install the Ink Tanks

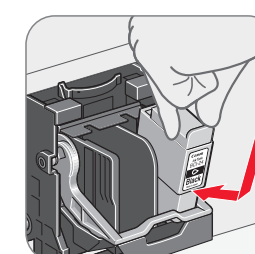
- Remove the black ink tank (BCI-24 Black) from its packaging and pull off the orange protective cap.



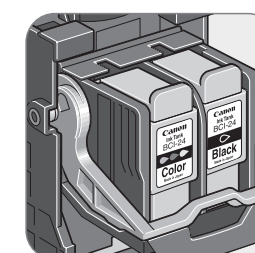
Protective cap

**NOTE:** To avoid spilling ink, do not touch the bottom of the tank once you have removed the protective cap.

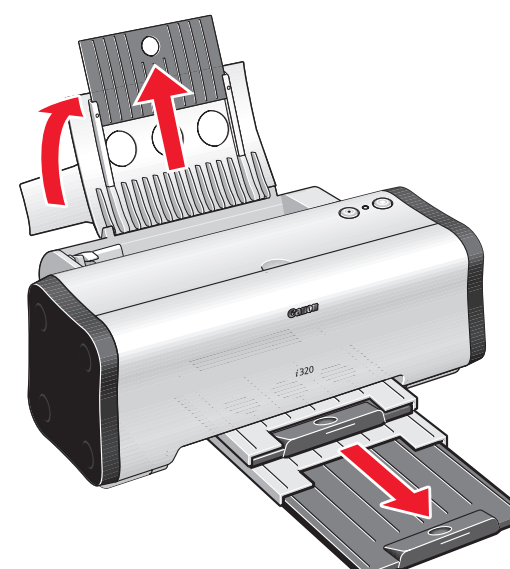
- Insert the black ink tank into the slot on the right. Press down until the ink tank locks into place.



- Repeat the procedure for the color ink tank (BCI-24 Color), inserting it into the remaining slot.

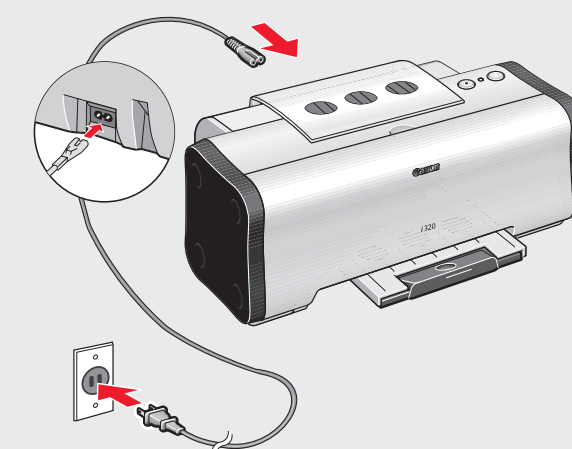


- Close the front cover. Pull out the paper rest and the output tray.



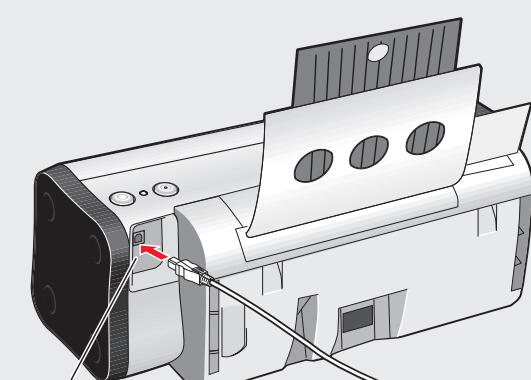
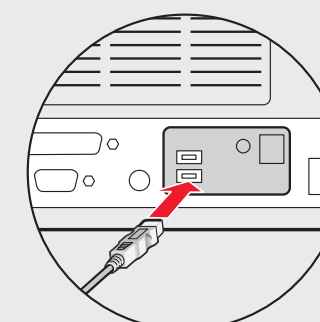
### 5 Connect the Printer To Your Computer

- Plug the power cord into the back of the printer and connect the other end to a power outlet.



**IMPORTANT:** BE SURE THE PRINTER IS OFF, or the computer will attempt to install the printer driver before the printer is ready.

- Connect one end of a USB cable (not included) to the computer, the other to the printer.



USB Port

USB Cable

Continue with Step 6 on side two.

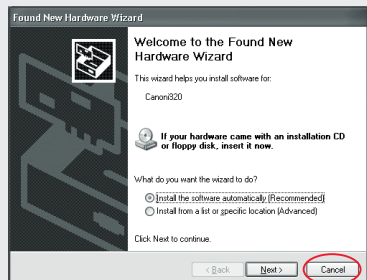


## 6 Install the Printer Driver (Windows®)

- 1 Turn the computer on and **LEAVE THE PRINTER OFF**.

**NOTE:** For Windows® XP or Windows 2000, log on to Windows as an Administrator before continuing.

**IMPORTANT:** If you see the Found New Hardware Wizard, click **Cancel**.



- 2 Close all software applications, then insert the “i320 Setup Software & User’s Guide” CD-ROM. The setup program should run automatically.

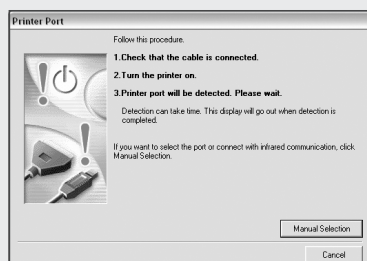
**NOTE:** If the CD-ROM does not run automatically, double-click **My computer**, then double-click the CD-ROM icon.

- 3 Read the License Agreement, then click **Yes** to continue.

- 4 When the main menu appears, click **Install**.



- 5 When the Printer Port window appears, **TURN THE PRINTER ON**. The software will begin identifying the printer port being used.



**IMPORTANT:** If your computer can not detect a printer port, refer to the Troubleshooting chapter in the *i320 Quick Start Guide* for instructions.

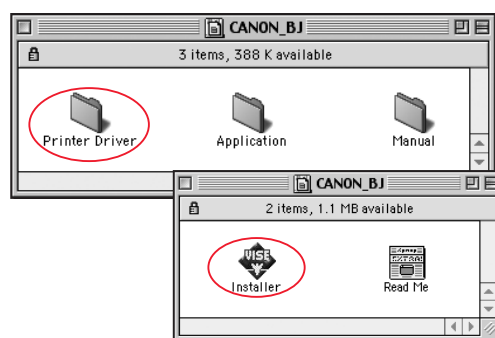
## 6 Install the Printer Driver (Macintosh®)

**IMPORTANT:** Drivers included with this printer support Mac 8.6-9.x. For Mac OS X driver and instructions, go to [www.canontechsupport.com](http://www.canontechsupport.com).

**NOTE:** Screen shots may differ depending on the operating system used.

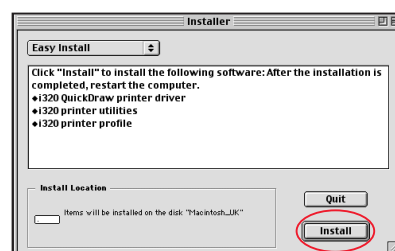
- 1 Turn the computer on and **LEAVE THE PRINTER OFF**. Then insert the “i320 Setup Software & User’s Guide” CD-ROM.

- 2 Open the printer driver folder on the CD-ROM, then double-click the **Installer** icon.

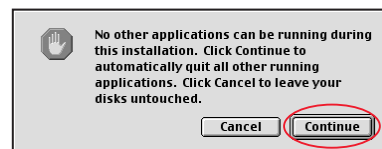


- 3 Read the License Agreement, click **Accept** to continue.

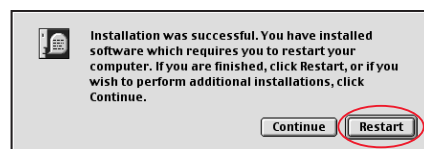
- 4 Click **Install**. The printer driver will load automatically.



- 5 If the message “No other applications can be running...” displays, click **Continue**.



- 6 When the “Installation was successful” screen displays, click **Restart**.



## 7 Align the Print Head

Before using the printer, align the print head to ensure the best quality printing.

- 1 Place a stack of blank paper in the paper rest.
- 2 Start the alignment procedure.

**Windows:**

- a. For Windows XP select **Start, Settings**, then **Control Panel**, then click on **Printers and Other Hardware**, then **Printers and Faxes**.

- b. Right-click the **Canon i320** icon, then click **Printing Preferences**.

- c. Click the **Maintenance** tab, then click the **Print Head Alignment** icon.

- d. When asked to start print head alignment, click **OK**.



- e. Wait about 60 seconds for the calibration sheet to print. Follow the on-screen instructions to complete print head alignment.

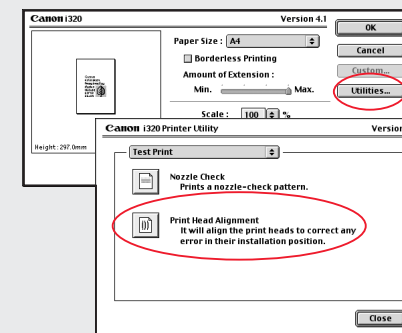
**Macintosh:**

- a. From the **File** menu in a software application, click **Page Setup**.

- b. Click the **Utilities** button.

- c. Click the down-arrow to select **Test Print**.

- d. Click the **Print Head Alignment** icon.



- e. Wait about 60 seconds for the calibration sheet to print. Follow the on-screen instructions to complete print head alignment.

- 3 Click **OK** (Windows) or **Close** then **OK** (Macintosh) when finished.