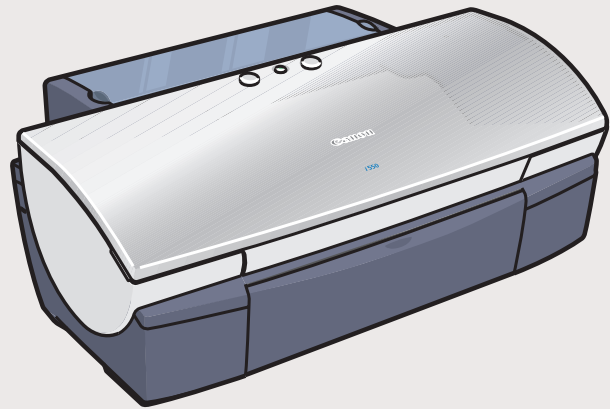


1 Unpack the Printer

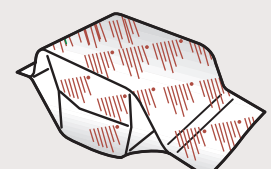
- 1 Carefully remove all items from the box.



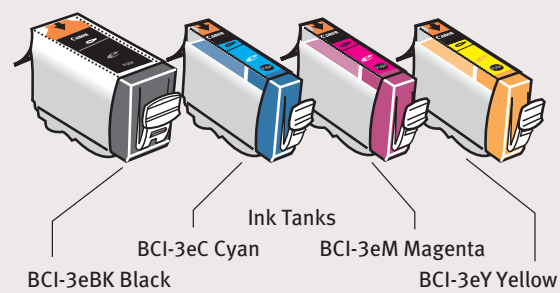
i550
Photo Printer



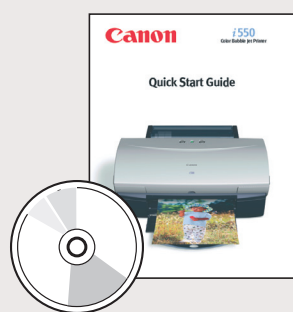
Power Cord



i550 Print Head



Ink Tanks
BCI-3eBK Black BCI-3eC Cyan BCI-3eM Magenta BCI-3eY Yellow

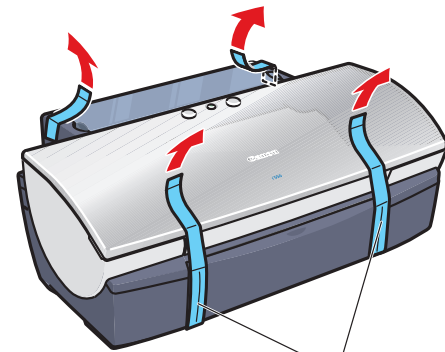


Documentation
and Software Kit

NOTE: The "i550 Setup Software & User's Guide" CD-ROM contains printer drivers, software applications and electronic manuals.

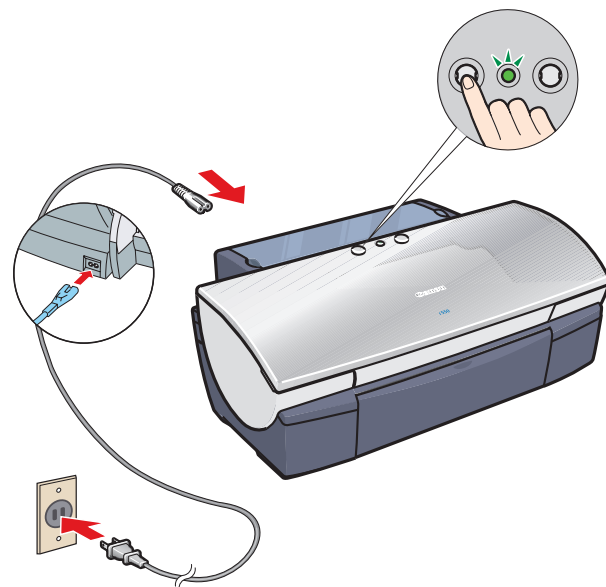
2 Prepare the Printer

- 1 Remove the shipping tape from the front and sides of the printer.



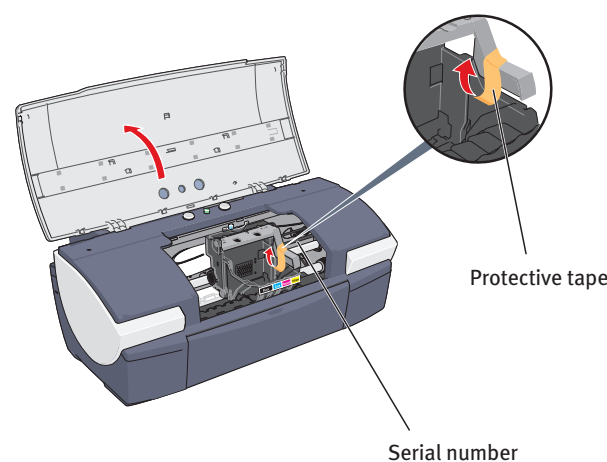
Shipping Tape

- 2 Plug the power cord into the back of the printer and connect the other end to a power outlet.



Press the POWER button.

- 3 Open the front cover. The print head holder automatically moves to the center. Remove the protective tape.



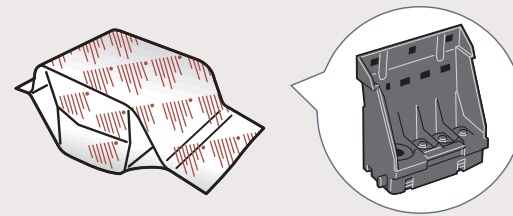
Protective tape

Serial number

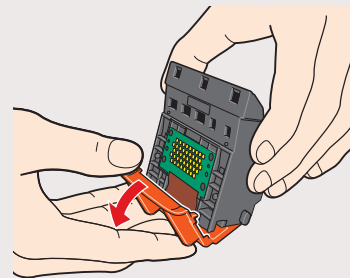
Write down the serial number located to the right of the print head. You will need this later to register the product.

3 Install the Print Head

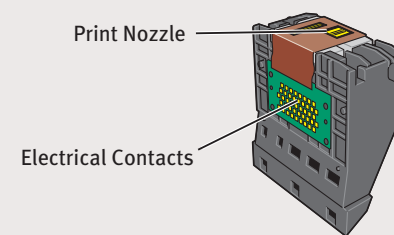
- 1 Remove the print head from its package.



- 2 Turn the print head over, then remove the orange protective cap.



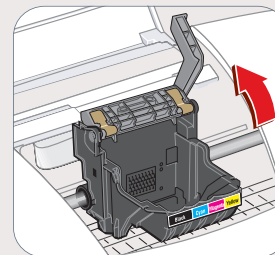
NOTE: Do not touch the electrical contacts.



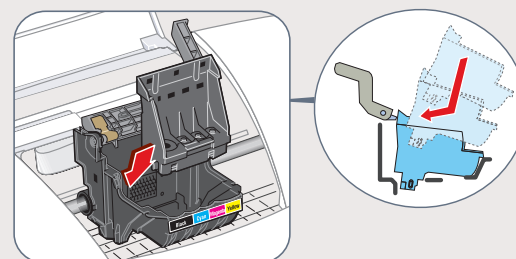
Print Nozzle

Electrical Contacts

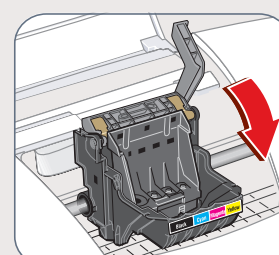
- 3 Raise the gray lock lever.



- 4 Gently slide the print head into the holder. The print head will rest at a slight angle. Do not press it down.



- 5 Lower the gray lock lever until it locks into place.

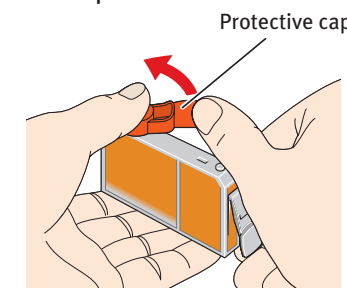


4 Install the Ink Tanks

- 1 Peel back the orange tab and completely remove the plastic wrapper from the yellow ink tank (BCI-3eY).



- 2 Twist off and discard the orange protective cap.

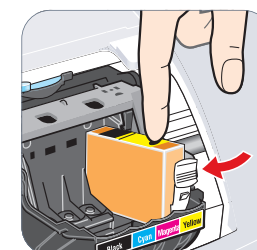


Protective cap

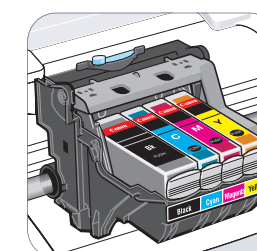
NOTE: To avoid spilling ink, never press on the sides of an ink tank.

- 3 Insert the ink tank into the correct slot. (Refer to the color guide on the print head.)

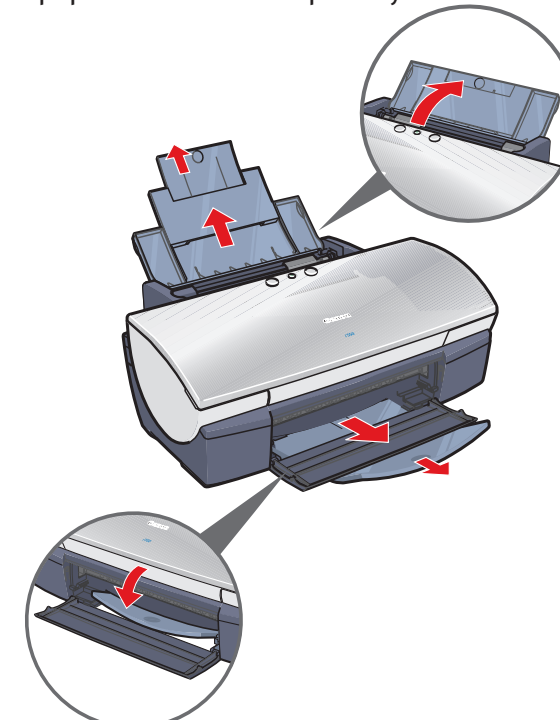
Press down until the ink tank clicks into place.



- 4 Insert the remaining three ink tanks into their assigned slots.



- 5 Close the front cover. Open and pull out the paper rest and the output tray.



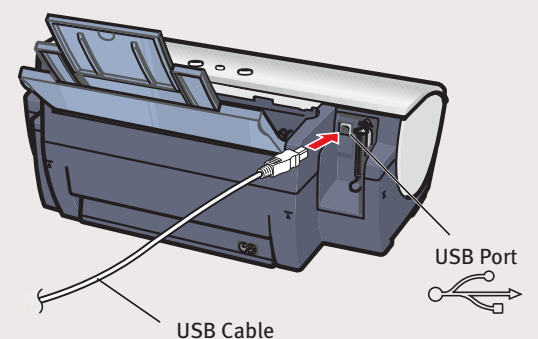
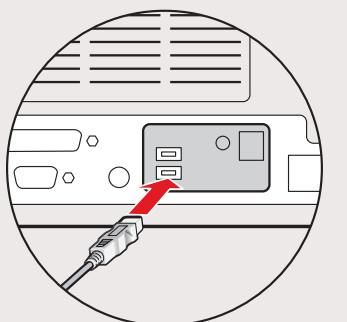
5 Connect the Printer To Your Computer

For USB Cables:

- 1 Turn the printer off.

IMPORTANT: Be sure printer is off before continuing, or the computer will attempt to install the printer driver before the printer is ready.

- 2 Connect one end of the USB cable to the computer, the other to the printer.



USB Cable

USB Port

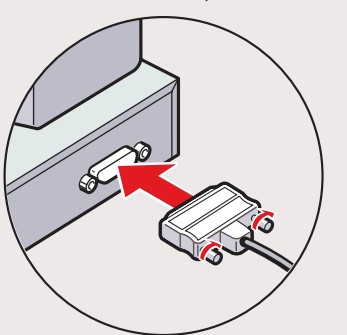
For Parallel Cables:

- 1 Turn the printer off.

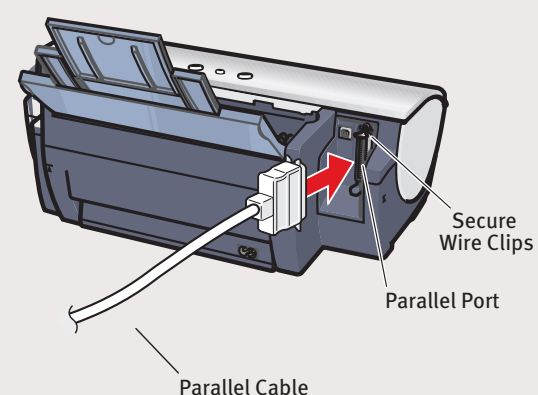
IMPORTANT: Be sure printer is off before continuing, or the computer will attempt to install the printer driver before the printer is ready.

- 2 Connect one end of the parallel cable to the computer, the other to the printer.

(IEEE 1284 compliant)



Parallel Cable



Parallel Cable

Secure Wire Clips

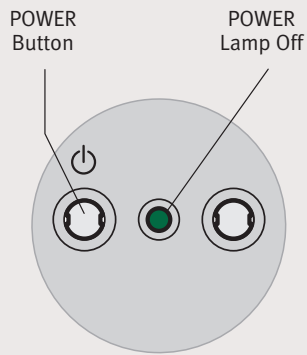
Parallel Port

Continue with Step 6 on side two.



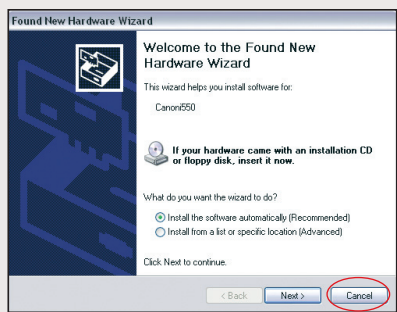
6 Install the Printer Driver (Windows®)

- 1 Be sure to **TURN THE PRINTER OFF** before continuing.



NOTE: For Windows® XP, Windows 2000 or Windows NT®, log on to Windows as a member of the Administrators group before continuing.

IMPORTANT: If you see the Found New Hardware Wizard, click **Cancel**.



- 2 Close all open software applications, then insert the “i550 Setup Software & User’s Guide” CD-ROM. The setup program should run automatically.

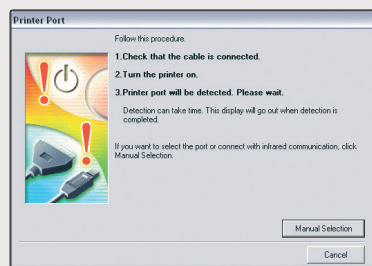
NOTE: If the setup program does not run automatically, double-click **My Computer**, then double-click the CD-ROM icon.

- 3 Read the License Agreement, then click **Yes** to continue.

- 4 When the main menu appears, click **Install**.

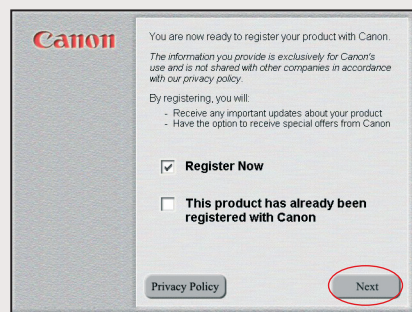


- 5 When the Printer Port window appears, **TURN THE PRINTER ON**. The software will begin identifying the printer port being used.

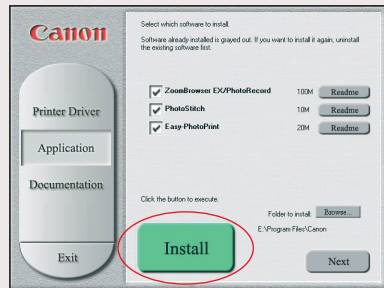


IMPORTANT: If your computer can not detect a printer port, refer to the Troubleshooting chapter in the *i550 Quick Start Guide* for instructions.

- 6 When the driver installation is complete, click **Finish**.
- 7 Register your product to ensure product support. Follow the on-screen instructions.



- 8 When the software menu appears, click **Install**.



- 9 When the software installation is complete, click **OK**, then **Exit**.

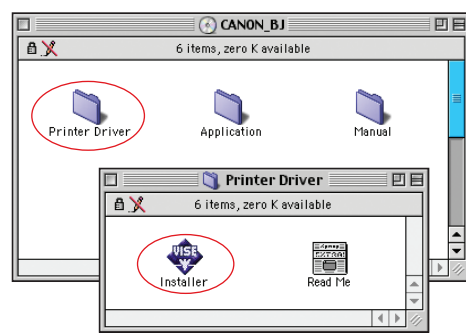
- 10 To ensure highest quality output, continue with **Step 7 Align the Print Head**.

6 Install the Printer Driver (Macintosh®)

IMPORTANT: Drivers included with this printer support Mac 8.6-9.x. For Mac OS X driver and instructions, go to www.canontechsupport.com.

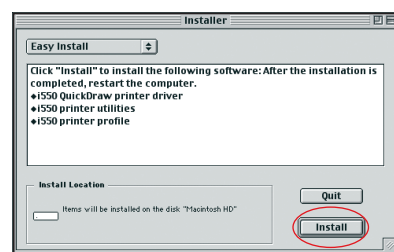
NOTE: Screen shots may differ depending on the operating system used.

- 1 Turn on your Mac and insert the “i550 Setup Software & User’s Guide” CD-ROM.
- 2 Open the Printer Driver folder on the CD-ROM, then double-click the **Installer** icon.

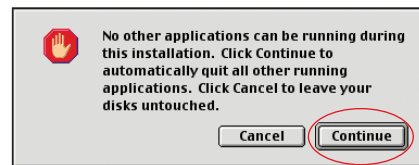


- 3 Read the License Agreement and click **Accept**.

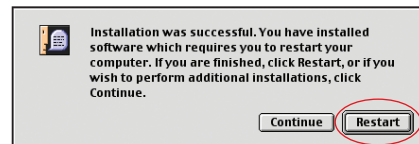
- 4 Click **Install**. The printer driver will load automatically.



- 5 If the message “No other applications can be running...” displays, click **Continue**.



- 6 When the “Installation was successful” screen displays, **Restart** your computer.



7 Align the Print Head

Before using the printer, align the print head to ensure the best quality printing.

- 1 Load a stack of blank paper in the paper rest.
- 2 Start the alignment procedure.

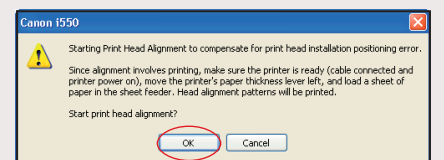
Windows:

a. For Windows XP select **Start**, **Settings**, then **Control Panel**, then click on **Printers and Other Hardware**, then **Printers and Faxes**.

b. Right-click the **Canon i550** icon, then click **Printing Preferences**.

c. Click the **Maintenance** tab, then click the **Print Head Alignment** icon.

d. When asked to start print head alignment, click **OK**.



e. Follow the on-screen instructions to complete print head alignment.

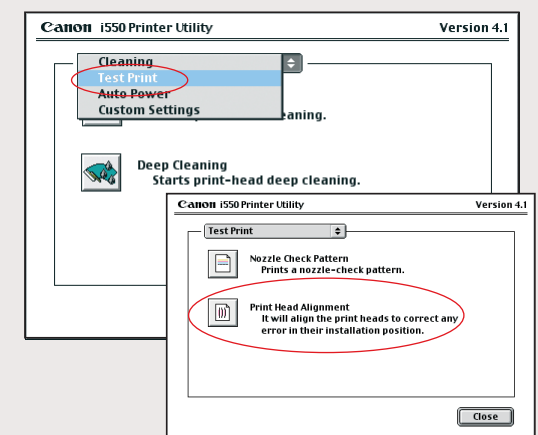
Macintosh:

a. From the **File** menu in a software application, click **Page Setup**.

b. Click the **Utilities** button.

c. Select **Test Print** from the pull down menu.

d. Click the **Print Head Alignment** icon.



e. Follow the on-screen instructions to complete print head alignment.

- 3 Click **OK** (Windows) or **Close** (Macintosh) when finished.