

BUBBLE JET PRINTER

*i*70

Quick Start Guide

Table of Contents

Preface	1
Shipping Materials	1
Introduction	1
Setting Up	2
Preparing the Printer	2
Connecting the Printer to the Computer	2
Installing the Print Head	3
Loading Paper	6
Installing the Printer Driver	7
Aligning the Print Head	11
Basic Operations	15
Printing with Windows	15
Printing with Macintosh	17
Print Head Maintenance	19
Appendix	20
Printing Data through Infrared Transmission	20
Printing Photos from the Digital Camera Directly	22
Notes on Handling the USB Interface (for Windows Users)	23
For Further Details...	24

Exif Print

This printer supports Exif 2.2 (also called “Exif Print”).

Exif Print is a standard for enhancing the communication between digital cameras and printers. By connecting to an Exif Print-compliant digital camera, the camera’s image data at the time of shooting is used and optimized, yielding extremely high quality prints.

Canadian Radio Interference Regulations

This digital apparatus does not exceed the Class B limits for radio noise emissions from a digital apparatus as set out in the interference-causing equipment standard entitled “Digital Apparatus,” ICES-003 of the Industry Canada.

Cet appareil numérique respecte les limites de bruits radioélectriques applicables aux appareils numériques de Classe B prescrites dans la norme sur le matériel brouilleur NMB-003 d’Industrie Canada intitulée « Appareils numériques ».

International ENERGY STAR® Program

As an ENERGY STAR® Partner, Canon Inc. has determined that this product meets the ENERGY STAR guidelines for efficiency.



The International ENERGY STAR® Office Equipment Program is a global program that promotes energy saving through the use of computer and other office equipment. The program backs the development and dissemination of products with functions that effectively reduce energy consumption. It is an open system in which business can participate voluntarily. The targeted products are office equipment such as computers, monitors, printers, faxes and copiers.

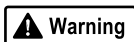
Their standards and logos are uniform among participating nations.

Power Requirements

Never use a power supply voltage other than that supplied in the country of purchase. Using the incorrect voltage could cause a fire or electric shock. The correct power supply voltages and frequencies are as follows:

AC 100-127 V, 50/60 Hz

AC 220-240 V, 50/60 Hz



This product emits low level magnetic flux.

If you use a cardiac pacemaker and feel abnormalities, please keep away from this product in use and consult your doctor.

Preface

Shipping Materials

Thank you for purchasing a Canon Bubble Jet Printer.

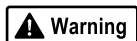
Check that all the following items are in the box. If anything is missing or is damaged, contact your Canon Authorized Dealer or Sales Representative.

- ☐ Printer
- ☐ Setup Software & User's Guide CD-ROM
- ☐ Quick Start Guide
- ☐ Print Head
- ☐ BCI-15 Black and BCI-15 Color Ink Tanks
- ☐ Universal AC Adapter
- ☐ Power Cord

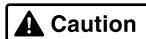
* A USB cable should be purchased separately according to your computer. For details on cable specifications, refer to page 2.

Introduction

This Quick Start Guide uses the following symbols to indicate important information. Always observe the instructions indicated by these symbols.



Instructions that, if ignored, could result in death or serious personal injury caused by incorrect operation of the equipment. These must be observed for safe operation.



Instructions that, if ignored, could result in personal injury or material damage caused by incorrect operation of the equipment. These must be observed for safe operation.

Also read the Safety Precautions in the User's Guide. Observe the warnings and cautions to avoid personal injury or damage to the printer.

Trademark Notices

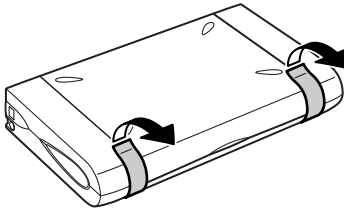
- Canon® is a registered trademark of Canon Inc.
- BJ™ is a trademark of Canon Inc.
- Microsoft® and Windows® are registered trademarks of Microsoft Corporation in the U.S. and other countries.
- Apple, Mac, Macintosh are trademarks of Apple Computer, Inc., registered in the U.S. and other countries.
- All other trademarks and registered trademarks appearing in this Quick Start Guide are the property of their respective owners.

Copyright ©2003 CANON INC.

All rights reserved. No part of this publication may be transmitted or copied in any form whatsoever without the express written permission.

Setting Up

1 Preparing the Printer

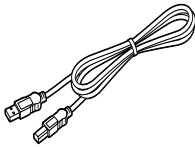


- 1 Place the printer on a flat surface.
- 2 Remove the tape from the printer.

The tape position is subject to change.

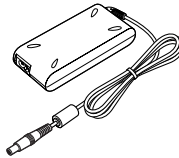
2 Connecting the Printer to the Computer

USB cable

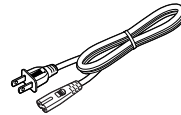


Recommended: Canon or other computer manufacturer cable, up to 5 meters in length

Universal AC adapter



Power cord



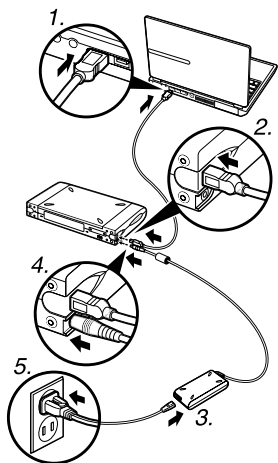
The power cord shape differs with countries.

Warning

- Never attempt to plug the power cord into the power outlet or unplug the power cord when your hands are wet.
- Never damage, modify, stretch, or excessively bend or twist the power cord. Do not place heavy objects on the power cord.
- Never use any power supply other than the standard power supply available in the country of purchase. Using the incorrect voltage and frequency could cause a fire or electric shock.
- Always push the plug all the way into the power outlet.

→ Notes

- If using Windows 95, you can print only via infrared transmission.
 - If your computer has an infrared transmission feature, you can print data without connecting a USB cable. After connecting the universal AC adapter, proceed to “Installing the Print Head” on page 3.
 - If your computer has an earth connection, ensure that this is attached.
 - If you do not intend to use the printer for a long period of time, unplug the power cord from the power outlet after turning off the printer.
-



Follow the steps below to install the printer driver correctly.

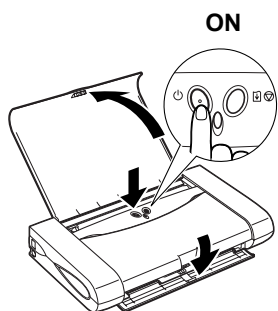
- 1** Ensure the printer and the computer are switched off.
- 2** Connect the cable.
- 3** Plug the power cord into the Universal AC adapter.
- 4** Plug the DC plug into the printer.
- 5** Plug the power cord into the power outlet.

➔ **Note**

If the Add New Hardware Wizard or Found New Hardware Wizard screen appears when carrying out the following operations, click **Cancel** and turn off the computer. For details, refer to page 7.

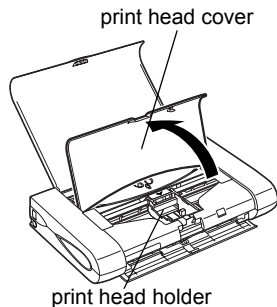
3 **Installing the Print Head**

■ **Installing the Print Head**



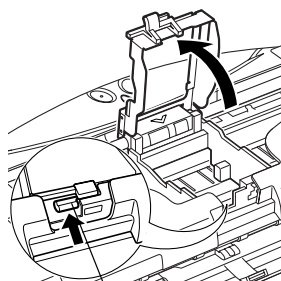
- 1** Open the paper rest.
- 2** Turn on the printer. Do NOT turn on the computer yet.

The POWER lamp flashes and the printer begins to operate. Wait until the POWER lamp remains fully lit.

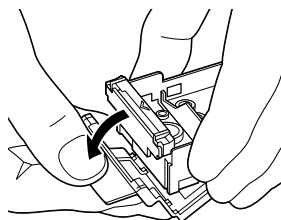


- 3** Open the print head cover.

The print head holder moves to the center.



lock button



- 4** Press the lock button, then raise the lock lever.

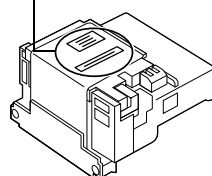
Do not touch internal parts other than the lock lever.

- 5** Remove the protective cap from the print head.

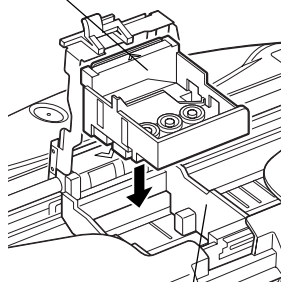
→ **Notes**

- Do not touch the print head nozzles.
- Do not attempt to reattach the protective cap once it has been removed.

print head
nozzles

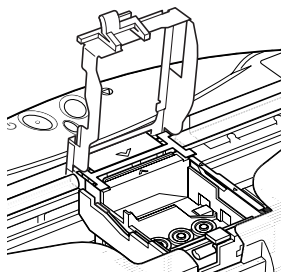


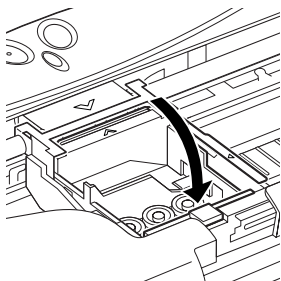
print head



print head holder

- 6** Place the print head in the holder aligning the ▼ mark with the ▲ mark.





7 Lock the print head into place by lowering the lever.

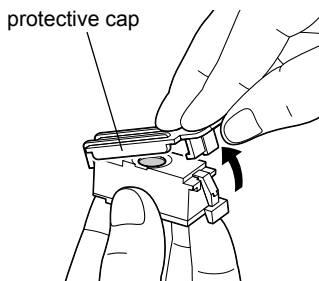
Press down the lock button until it clicks.

Do not touch the lock lever once the print head has been installed.

■ Installing the Ink Tanks

⚠ Caution

- For safety reasons, store ink tanks out of the reach of small children.
- Do not drop or shake ink tanks as this may cause the ink to leak out and stain your clothes and hands.

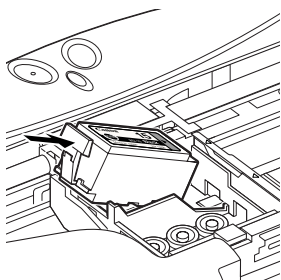
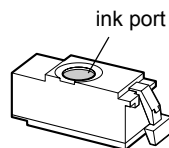


1 Take out the black ink tank.

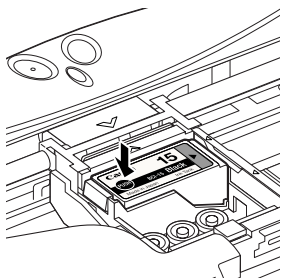
2 Hold the ink tank as shown in the diagram and remove the protective cap.

→ Notes

- Do not touch the ink port.
- Do not attempt to reattach the protective cap once it has been removed.



3 Insert the black ink tank slant into the back slot aligning the ► mark with the ◀ mark.



4 Press the until it clicks into place.

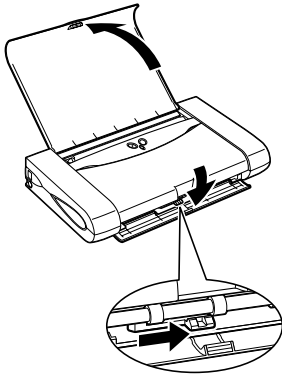
- 5** Use the same procedure to install the color ink tank in the front slot.
- 6** Close the print head cover.

➔ **Note**

Wait until the preparatory operation is complete: it takes about 2 minutes.

4 Loading Paper

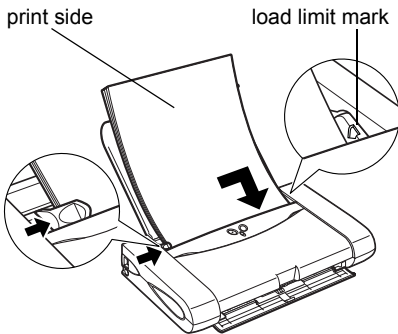
■ Loading A4 (Letter) Size Plain Paper



- 1** Open the paper rest and the paper output slot cover as shown.
- 2** Ensure the paper thickness lever to the right position.

➔ **Note**

Set the paper thickness lever to the right when using plain paper, to the left when using thick paper. Refer to the User's Guide for information on loading envelopes and other media.



- 3** To avoid paper jams, fan the stack to remove static cling, then align the edges of the stack by tapping it on a flat surface.
- 4** Load the paper, aligning it with the right side of the sheet feeder.

You can load up to 30 sheets of plain paper. Do not load exceeding the load limit mark.
- 5** Slide the paper guide against the left side of the stack of paper.

You now need to install the printer driver:

Windows: Go to page 7

Macintosh: Go to page 9

5 Installing the Printer Driver

■ Installing the Printer Driver – Windows

➔ Notes

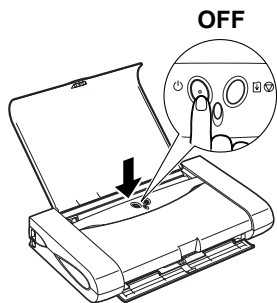
- When performing infrared transmission, requirements for using the computer must be satisfied. Refer to “Printing Data through Infrared Transmission” on page 20 before installing the printer driver.
- Do not disconnect the cable or remove the CD-ROM during the installation. The driver cannot be correctly installed.
- The screens below refer to Windows XP installation. Screen may differ depending on the operating system you are using.
- When installing the printer driver in Windows XP or Windows 2000, log on to the system as a member of the **Administrators** group.
- The Setup Software & User’s Guide CD-ROM contains the application software to import, edit, and print image data. If you want to install the application software, click **Install** on step 7. Internet Explorer 4.0 or later must be installed for Easy-PhotoPrint. Internet Explorer 5.5 or later must be installed for Easy-WebPrint.

If the following screen appears automatically, click **Cancel** and follow steps 1 to 8 to install the printer driver.



Special Notes for Windows 98 or Windows Me USB Users

Click **Cancel** to quit the screen and turn off the printer. Next, remove and replace the USB cable connected to your computer.



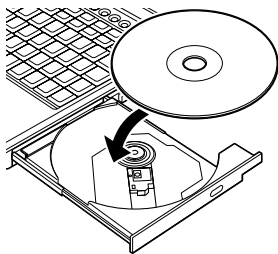
- 1 Ensure the printer and computer are switched off.

➔ Note

When printing via IrDA, align the infrared port of the computer to that of the printer.

- 2 Turn on the computer and start Windows. If any applications automatically run, quit them.

Disable any virus detection programs.
Do NOT turn the printer on at this stage.

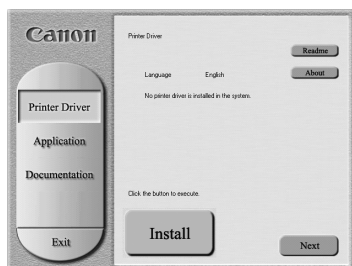


3 Place the Setup Software & User's Guide CD-ROM in the CD-ROM drive.

→ Notes

- If the CD-ROM does not run automatically, click **Start** and select **My Computer**, then double-click the CD-ROM icon. For non-XP Windows, double-click **My Computer** in the Windows screen, then double-click the CD-ROM icon.
- If the language selection screen appears, select a language, then click the **Next** button.

4 Follow the instructions displayed on screen. When the screen shown on the left is displayed, click **Install**.

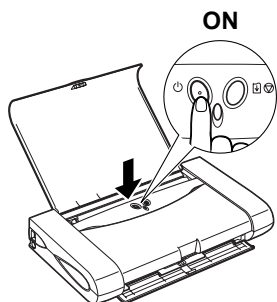
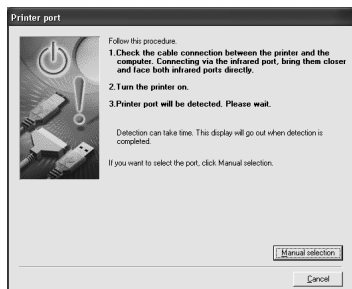


5 When the screen shown on the left appears, turn the printer on.

If the printer is recognized, the printer driver will be automatically installed.

→ Notes

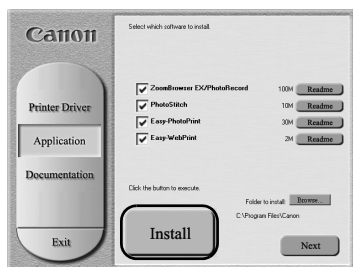
- If the USB connection is not recognized, refer to “Notes on Handling the USB Interface (for Windows Users)” on page 23.
 - If the computer is not recognized when you use infrared transmission, carry out the following operations:
 1. Click **Manual selection**.
 2. Select the port from Selected Port:
 - Windows XP/Windows 2000→[IR]
 - Windows Me/Windows 98/Windows 95→[LPT3]
 then click **Next**.
- * Some computers may allocate port number for infrared ports differently.



6 Click **OK**.

Before you use the printer, you must carry out print head alignment on page 11.





- 7** If you want to install the application software, click **Install**.

Follow the instructions on screen to install the application software. When the message “Software installation is completed.” appears, click **OK**.

- 8** Click **Exit**.

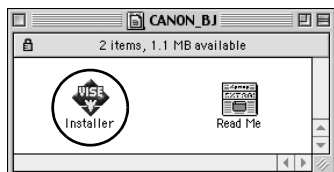
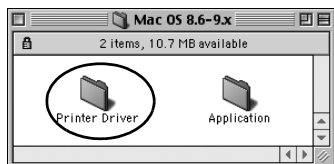
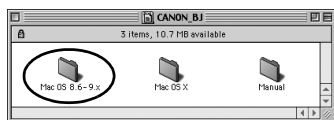
→ **Notes**

- To view the User’s Guide, please refer to “How to View the User’s Guide” on page 24.
- If a message prompting you to restart the computer appears, click **Yes**.
- For further information of applications and how to start them, refer to “Applications Included in the CD-ROM Package” on page 24.

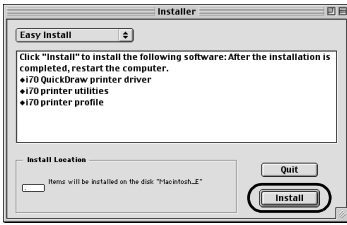
■ Installing the Printer Driver – Macintosh

→ **Notes**

- Do not remove or insert the USB cable during installation, as this may result in the computer or printer not operating normally.
- Before installing the driver, disable all virus detection programs and automatically loading programs or remove them from your system folder.
- The Setup Software & User’s Guide CD-ROM contains the application software, ImageBrowser, to import and print image data. If you want to install ImageBrowser, double-click the application folder, then double-click the ImageBrowser folder and then **Installer**.



- 1** Turn on the Mac.
- 2** Place the Setup Software & User’s Guide CD-ROM in the CD-ROM drive.
- 3** Double-click the Mac OS 8.6-9.x folder.
- 4** Double-click the printer driver folder, then select a language.
- 5** Double-click **Installer**.
- 6** Read the Licence Agreement and click **Accept** to continue.



7 Click **Install**.

Wait for the installation to finish.

➔ **Note**

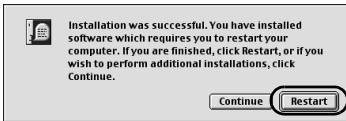


No other applications can be running during this installation. Click Continue to automatically quit all other running applications. Click Cancel to leave your disks untouched.

Cancel

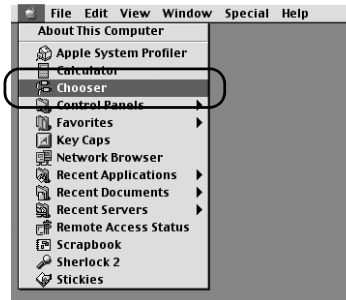
Continue

If the above message appears, check that there are no unsaved documents, then click **Continue**. If a document needs to be saved, click **Cancel** then save the document. After saving the document, begin again from step 4.

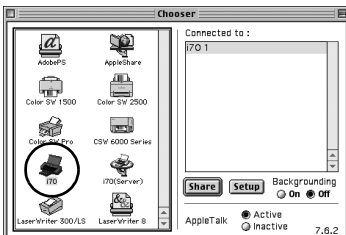


8 Click **Restart**.

The computer restarts.



9 Select **Chooser** in the Apple menu.



10 Click the icon for the printer you are using and close **Chooser**.

Before you use the printer, you must carry out print head alignment on page 13.

➔ **Note**

Refer to the User's Guide when using this printer as a network printer.

6 Aligning the Print Head

This operation must be carried out when using the printer for the first time. Aligning the print head positions allows you to print without shifts in the color registration.

■ Aligning the Print Head – Windows

- 1 Click **Start** and select **Control Panel**, **Printers and Other Hardware**, and then **Printers and Faxes**.

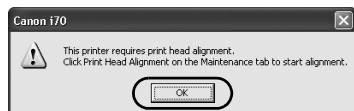
➡ **Note**

For non-XP Windows, click **Start**, then select **Settings**, **Printers**.

- 2 Click the icon for your printer.
- 3 Open the **File** menu and select:

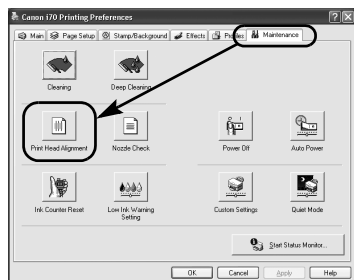
- Windows XP/Windows 2000 → [Printing Preferences...]
- Windows Me/Windows 98 → [Properties]

to open the setting screen.



- 4 Click **OK**.

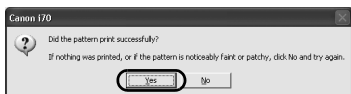
- 5 Click the **Maintenance** tab, and click **Print Head Alignment**.





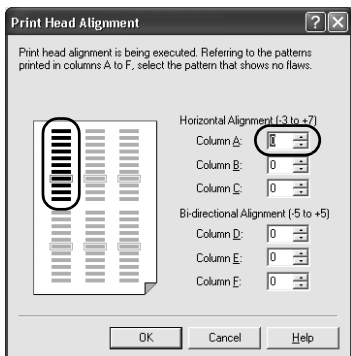
- 6 Check that paper is loaded in the printer and click **OK**. If a message warning you not to perform other operations appears, click **OK**.

It takes about 60 seconds to start printing.

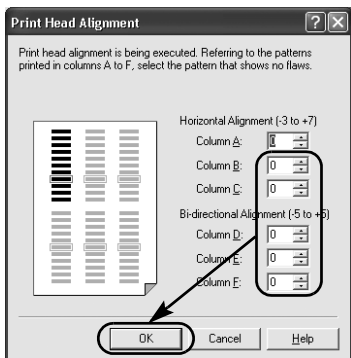


- 7 After the pattern is printed, click **Yes**.

If the pattern is not printed successfully, open the print head cover and ensure that the ink tanks are correctly installed.



- 8 Look at the print out. From the patterns in Column A, select the most even, least irregular pattern and enter the number.



- 9 In the same way, one by one, select the most even patterns printed with the least irregularities from each of Columns B to F, enter their numbers, and click **OK**.

If it is difficult to pick the best pattern on Column F, pick the setting that produces the least noticeable vertical white stripes.



Less noticeable white stripes



More noticeable white stripes

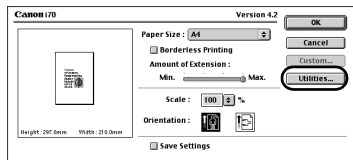
- 10 Click **OK**.

This completes the printer setup. The printer is now ready to use.

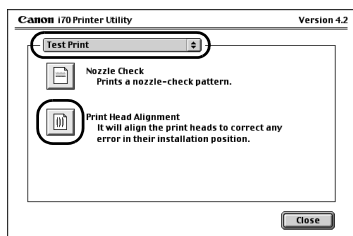


■ Aligning the Print Head – Macintosh

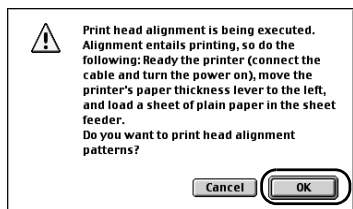
- 1 Select **Page Setup** in the **File** menu.
- 2 Click **Utilities**.



- 3 Select **Test Print** from the menu and click **Print Head Alignment**.



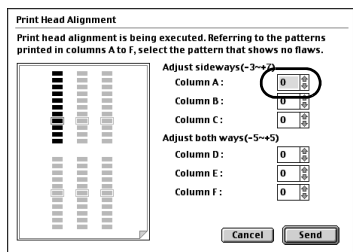
- 4 Check that paper is loaded in the printer and click **OK**.

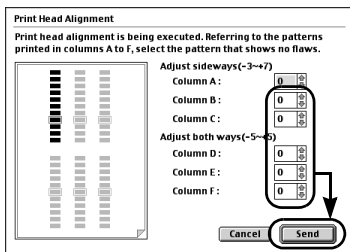


It takes about 60 seconds to start printing.

If the pattern is not printed successfully, open the print head cover and ensure that the ink tanks are correctly installed.

- 5 Look at the print out. From the patterns in Column A, select the most even, least irregular pattern and enter the number.





- 6** In the same way, one by one, select the most even patterns printed with the least irregularities from each of Columns B to F, enter their numbers and click **Send**.

If it is difficult to pick the best pattern on Column F, pick the setting that produces the least noticeable vertical white stripes.

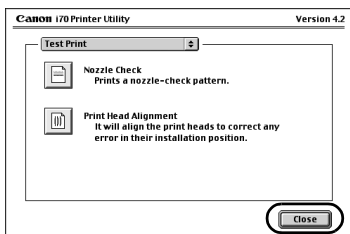


Less noticeable white stripes



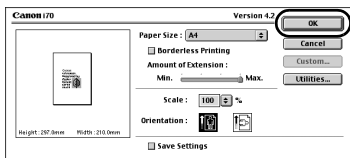
More noticeable white stripes

- 7** Click **Close**.



- 8** Click **OK**.

This completes the printer setup. The printer is now ready to use.



Basic Operations

⚠ Caution

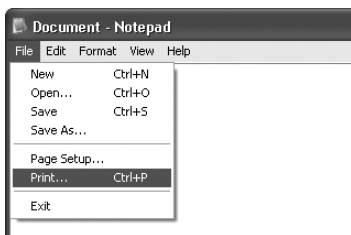
- If you detect smoke, unusual smells or strange noises around the printer, immediately switch the printer off and always unplug the printer. Contact your local Canon service representative.
- To avoid injury, never put your hand or fingers inside the printer while it is printing.

Printing with Windows

Adjusting the print settings according to your needs allows you to produce better quality prints.

In this section, we will use WordPad for the purpose of explanation. The procedures you use and the screens that appear on your computer may differ according to the application that you use.

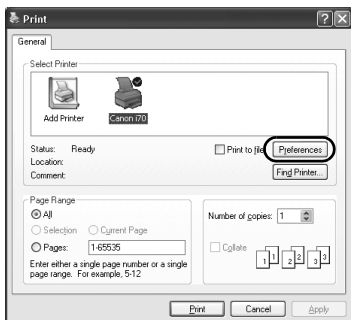
■ Printing



1 Print the document from the application.

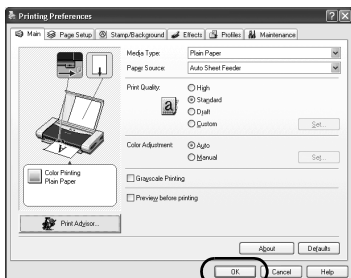
On the **File** menu, click **Print**.

Check the application's user's manual for the actual procedures.



2 Ensure your printer is selected, then click:

- Windows XP → [Preferences]
- Windows Me/Windows 98 → [Properties]
- Windows 2000 → [Main] tab



3 Specify the required settings and click **OK**.

➡ Note

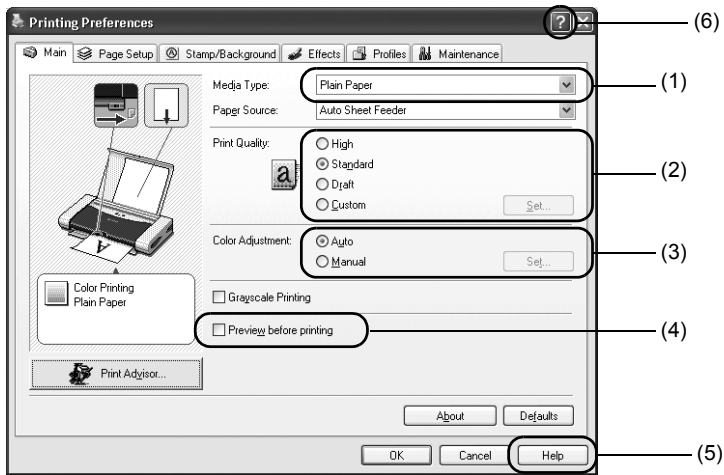
If you use anything other than plain paper, please refer to “Basic Print Settings” on page 16.

4 To start printing, click **OK**.

Printing will start in a few moments.

■ Basic Print Settings

For the best print quality, specify the minimum requirement settings in the **Main** tab. To get the best results, ensure you select the type of media loaded in the printer when printing on paper other than plain paper.



(1) Media Type	Select the type of media loaded in the printer.
(2) Print Quality	Select one option from High , Standard and Draft . Select Custom to set the print quality manually.
(3) Color Adjustment	If you wish to control the color adjustment settings in more detail, select Manual .
(4) Preview before printing	Select this to check the layout before printing.
(5) Help	Click this for a more detailed explanation of the functions in the tab. (This may not appear when using Windows XP or Windows 2000. If this happens, click Start then select All Programs (or Programs) - Canon i70 - Guide).
(6) ?	Click this to change the cursor shape to ?. By clicking on the item's name with this ? cursor, an explanation will be displayed.

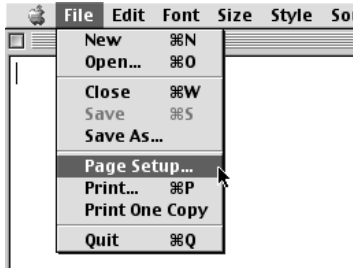
➡ Notes

- Clicking **Print Advisor** allows you to change to the most appropriate print settings simply by answering questions when prompted.
- Use the application to set the paper size and paper orientation. Before printing, open the printer properties dialog box and check that **Page Size** in the **Page Setup** tab is the same as that specified within application.
- Refer to the User's Guide for more information about printer driver functionality.

Printing with Macintosh

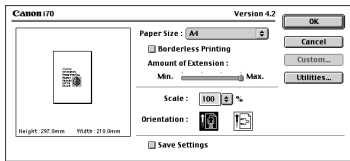
Adjusting the print settings according to your needs allows you to produce better quality prints.

■ Printing



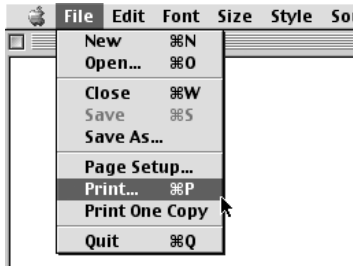
- 1 Open the **Page Setup** dialog box in your application.

On the **File** menu, click **Page Setup**. Check the application's user's manual for the actual procedures.



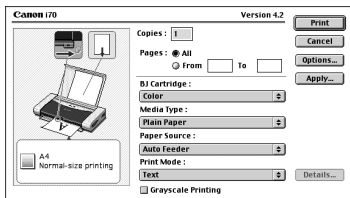
- 2 Specify the page setup.

For details, refer to “Page Setup” on page 18.



- 3 Open the **Print** dialog box in your application to print the document.

On the **File** menu, click **Print**. Check the application's user's manual for the actual procedures.



- 4 Specify the print settings according to your requirements.

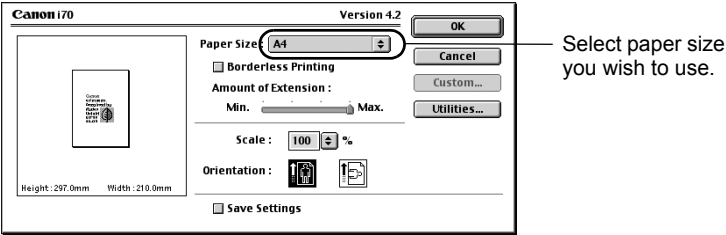
For details, refer to “Basic Print Settings” on page 18.

- 5 Click **Print**.

Printing will start in a few moments.

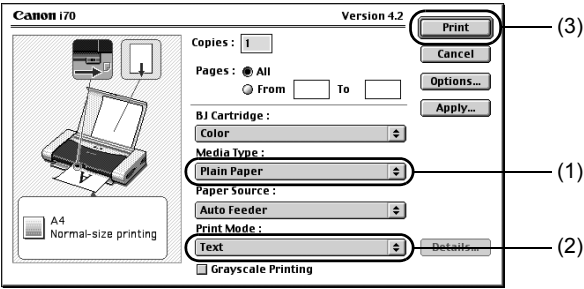
■ Page Setup

Use the **Page Setup** dialog box to specify the paper size settings.



■ Basic Print Settings

For the best print quality, specify the minimum requirement settings in the **Print** dialog box. To get the best results, ensure you select the type of media loaded in the printer when printing on paper other than plain paper.



(1) Media Type	Select the type of media loaded in the printer.
(2) Print Mode	Select the type of document you want to print. To specify more detailed settings for the print quality or color, select Manual and click Details .
(3) Print	Click this to start printing.

➔ Notes

- See Balloon Help for more information about other printer driver functions.
Select **Show Balloons** in the **Help** menu for an explanation of each of the items in the setting screen. To see the explanation, point to the item with the mouse.
- Refer to the User's Guide for more information about printer driver functionality.

Print Head Maintenance

■ If Blurring Occurs or If a Specific Color Does Not Print

Perform print head cleaning to improve the print quality. Ensure that the printer is turned on and follow the instructions below.

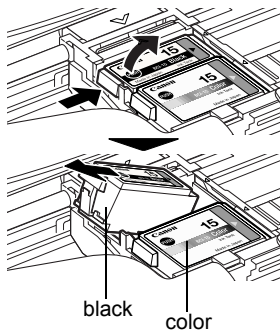
- Windows
Open the printer properties dialog box and click the **Maintenance** tab. Click **Cleaning**.
For details on how to open the printer properties dialog box, refer to “Aligning the Print Head – Windows” on page 11.
- Macintosh
Open the **Page Setup** dialog box and click **Utilities**. Click **Cleaning**.

■ When the Printer Runs out of Ink

Replace the empty ink tank with a new one.
Specify the following ink tanks when purchasing.

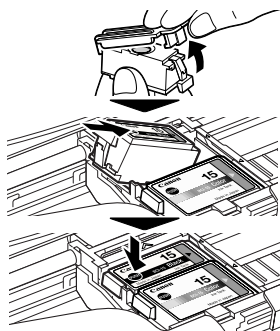
Ink Tank BCI-15 Color

Ink Tank BCI-15 Black



1 Open the print head cover and remove the empty ink tank.

Do not touch the lock lever.



2 Install the new ink tank.

Close the print head cover when finished.

➡ **Note**

When you enable the low ink warning, reset the ink counter of the ink tank installed.
Refer to the User's Guide for more detailed procedures and information about maintenance.

Appendix

Printing Data through Infrared Transmission

If you have a computer or PDA with an infrared port for wireless data transmission, you can print data with a cordless connection with the printer. You can also print an address book, schedule, or memo received from a PDA (Personal Digital Assistants) in a fixed format through infrared transmission.

■ Requirements for Infrared Transmission with the Computer

Printing through infrared transmission can be performed under Windows XP, Windows Me, Windows 2000, Windows 98, Windows 95. In order to use infrared transmission, your computer must satisfy the following requirements:

Computer	IBM PC/AT or compatible machine
CPU	Intel Pentium or higher
IrDA	IrDA 1.1 compliant
Baud rate (transmission speed)	Max. 4 Mbps
Infrared transmisssion devices	<ul style="list-style-type: none">• Infrared transmission port incorporated in the computer• Infrared port (OBEX compliant) of the PDA (Personal Digital Assistants)

➡ Notes

- When using Windows Me or Windows 98, it must have been pre-installed in your computer.
- When using Windows 98 or Windows 95, check whether the infrared transmission driver has been installed. To activate the infrared port, carry out the following operation:
 1. Click **Start**, then click **Settings** and **Control Panel** sequentially.
 2. Check whether the **Infrared** icon is displayed in the window.
If this icon is displayed, the required infrared driver has already been installed. If this icon is not displayed, change the BIOS setting to activate (turn on) the infrared port. For the procedure, refer to your computer manual.
 3. Double-click the **Infrared** icon.
 4. Check whether the **Enable infrared communication** check box (Windows 98) or **Enable infrared on** check box (Windows 95) is selected. If the check box is not selected, select it.
- When using Windows 95, IrDA 1.0 (baud rate: max. 115.2 kbps) is used for data transmission. In this case, Microsoft Infrared Communications Driver Version 2.0 must have been installed in your computer.
For how to install, refer to your computer manual.

■ Performing Infrared Transmission

When performing infrared transmission, also refer to your computer or PDA manual.

1 Ensure that the universal AC adapter is connected securely.

When using an optional battery, ensure that it has been charged.

2 Open the paper rest and turn on the printer.

3 Load the paper on the paper rest.

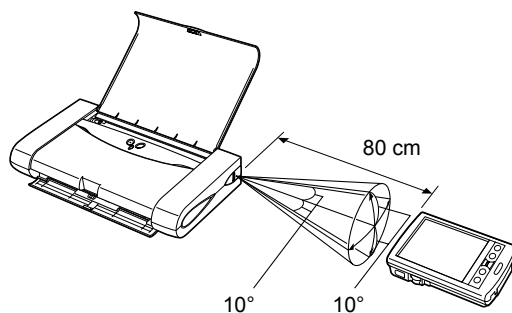
4 Align the infrared port of the computer or PDA to that of the printer at a distance of less than 80 cm.

The effective angle of the infrared port of the printer is about 10° from the central axis in both vertical and horizontal directions.

The allowable distance of communication with the printer depends on the computer or PDA you use. For this distance, refer to your computer or PDA manual.

→ **Note**

Do not place any obstacle between the infrared ports of the printer and PDA or computer. Data cannot be transmitted between them.



→ **Notes**

- Before printing data or using a maintenance function of the printer driver, ensure that the name of the printer is displayed by placing the mouse pointer on the **Wireless Link** icon (For Windows 98 or Windows 95, click the **Infrared Monitor** icon) on the Control Panel.
 - During printing, be careful not to interrupt infrared transmission with the printer. If it is interrupted, turn off the printer and cancel printing on the computer or PDA. Double-clicking the **Wireless Link** icon (For Windows 98 or Windows 95, click the **Infrared Monitor** icon) on the Control Panel allows you to check whether IrDA transmission has been interrupted.
 - When using Windows XP or Windows 2000, BJ Status Monitor is not displayed.
-

Printing Photographs Directly from a Digital Camera

Connecting a Canon digital camera with the Bubble Jet Direct function to the printer allows you to print recorded images directly without using a computer. Connect the USB cable that came with your digital camera.

Media Types for Digital Camera

When you connect a digital camera, you can use the following media:

Digital Camera Setting	Media Type
Card #1	Photo Paper Pro 4" x 6" / 101.6 × 152.4 mm
Card #2	Photo Paper Plus Glossy 4" × 6" / 101.6 × 152.4 mm
Card #3	Photo Paper Plus Glossy 5" × 7" / 127.0 × 177.8 mm
LTR	Photo Paper Pro or Photo Paper Plus Glossy Letter
A4	Photo Paper Pro or Photo Paper Plus Glossy A4

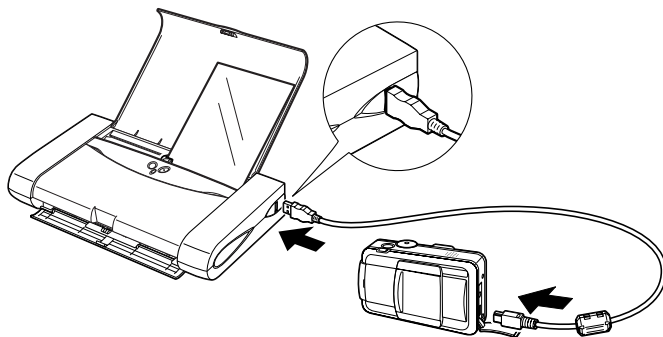
Printing from a Digital Camera

- 1 Ensure that the universal AC adapter is connected securely.

When using an optional battery, ensure that it has been charged.

- 2 Open the paper rest and turn on the printer.
- 3 Load the paper on the paper rest.
- 4 Ensure the digital camera is switched off.
- 5 Connect the digital camera and printer with the USB cable that came with the digital camera.

The digital camera will automatically turn on.
If not, manually turn it on.



- 6 Start printing using the print function of the digital camera.

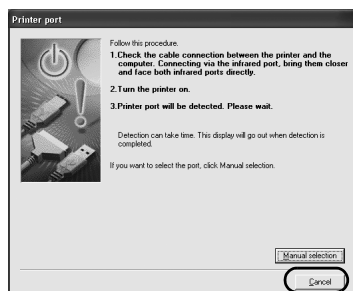
→ Notes

- For the digital camera operation method and troubleshooting, refer to your digital camera manual. For print error messages, refer to the User's Guide.
 - By operating the digital camera, you can make the following prints:
 - You can make a standard print from the image displayed in the single display mode or in the index display mode.
 - You can print specified numbers of images, or make an index print by editing the DPOF.
 - For the images taken with an Exif 2.2-compatible digital camera, the Photo Optimizer PRO function can be used.
 - If date printing is set from the operation panel of the digital camera, the date when the photograph was taken is to be printed (excluding the index print).
 - Images will be scaled automatically according to the image size set on the digital camera and the size of the media set on the printer.
 - The digital camera does not support the following functions:
 - Print quality setting
 - Maintenance
- * The print head position cannot be adjusted by operating the digital camera. Connect the printer to the computer, then align the print head position. If the print head position has not been adjusted, reduce the printing speed (one-way printing) for better print quality.
- Images other than Exif may not be index printed.
-

Notes on Handling the USB Interface (for Windows Users)

If installation of the printer driver does not proceed as instructed in this Quick Start Guide, there may be a problem with the USB driver installation.
Try reinstalling the printer driver.

■ Reinstalling



If you cannot proceed beyond the **Printer Port** screen:

- 1** Click **Cancel**.
- 2** When the **Terminate Installation** screen is displayed, click **OK**.
- 3** Click **Exit**, then remove the CD-ROM.
- 4** Turn the printer off.
- 5** Restart the computer.
- 6** Reinstall the printer driver (see page 7).

For Further Details...

For more information, place the Setup Software & User's Guide CD-ROM in the CD-ROM drive.

■ User's Guide Contents

The "User's Guide" is an HTML manual you can browse through on your computer.

Contents

- Printer parts and their functions
- Further printing techniques
- Routine maintenance
- Printing media
- Troubleshooting
- Specifications

■ How to View the User's Guide

For Windows

- (1) Load the CD-ROM in your computer.
- (2) Click **Documentation** at left of the screen.
- (3) Click **View Documents**.
- (4) When a message appears, click
 - **Yes** – to install the User's Guide
 - **No** – only to browse the User's Guide
- (5) Select **User's Guide** and click **OK**.
Follow the instructions on screen.

For Macintosh

- (1) Load the CD-ROM in your computer.
- (2) Double-click the **Manual** folder.
- (3) Select a language folder.
- (4) Double-click the **User's Guide** folder.
- (5) Double-click the icon for the
i70_UG_ENG.htm file.

■ Applications Included in the CD-ROM Package

➡ **Note**

For detailed description of the various features of photo applications and instructions on their use, refer to the Photo Application Guide include on the Setup Software & User's Guide CD-ROM.

Easy-PhotoPrint (Windows)

You can make a Borderless Printing easily and quickly, just by selecting a photograph taken with a digital camera and the paper type on which to print. You can also use simple editing features such as trimming and image rotation.

It is Exif Print (Exif 2.2) compatible.

➡ **Note**

When starting Easy-PhotoPrint, click **Start** and select **All Programs** (or **Programs**) - **Canon Utilities** - **Easy-PhotoPrint** - **Easy-PhotoPrint**.

ImageBrowser (Macintosh)

You can import photographs taken with a digital camera into the computer, edit and caption them. You can also make a Borderless Printing or Index Print without difficulty.

It is Exif Print (Exif 2.2) compatible.

➔ **Note**

When starting ImageBrowser, double-click the **Canon ImageBrowser** icon (alias) on the desktop.

Easy-WebPrint (Windows)

You can easily print homepages displayed on Internet Explorer or pages from User's Guide (HTML manual of this printer) in full size.

Easy-WebPrint automatically adjusts the layout when printing a screen.

This feature enables you to print a screen without its right end being cut.

This application is a plug-in for Internet Explorer, and its toolbar is automatically added to Internet Explorer after installation.

Easy-WebPrint requires Windows XP, Windows Me, Windows 2000, or Windows 98.

■ **BJ Printer Driver Systems Requirements**

For Windows

- Use a computer on which Windows XP, Windows 2000, Windows Me, Windows 98 or Windows 95^{*1} can operate.
- USB^{*2} interface
- Available hard-disk space for printer driver installation

Windows XP/Windows 2000: 50MB

Windows Me/Windows 98: 15MB

^{*1} When using Windows 95, you can print through infrared transmission only.

^{*2} USB operation can only be guaranteed on a PC with pre-installed Windows XP, Windows 2000, Windows Me, or Windows 98. (This includes Windows XP, Windows 2000, or Windows Me upgraded from pre-installed Windows 98 or later)

For Macintosh

(Macintosh 8.6-9.x)

- Use a Macintosh series computer equipped with USB interface on which Mac OS 8.6-9.x can operate.
- 30MB of available hard-disk space for printer driver installation

(Macintosh OS X)

- Use a Macintosh series computer equipped with USB interface on which Mac OS X v10.1 or later can operate. (The Setup Software & User's Guide CD-ROM cannot be read in Mac OS X v10.0.x)
- 100MB of available hard-disk space for printer driver installation
- The following functions are not supported:
 - Borderless printing (will be supported with Mac OS X v10.2 or later version)
 - Shared printer in the network (will be supported as an OS function with MAC OS X v10.2 or later)
 - Duplex Printing
 - Photo Optimizer PRO
 - Printing on nonstandard size paper (will be supported with Mac OS X v10.2 or later)
- If you want to use an application, first install the application contained in the Mac OS X folder.

Additional Systems Requirements for User's Guide

- Pentium[®] 75 MHz equivalent or higher processor (Pentium[®] 133MHz equivalent or higher processor recommended)
- 2x or higher CD-ROM drive (4x or higher recommended)
- 10 MB of available hard-disk space (when installing the User's Guide)
- Microsoft Internet Explorer 5.0 or later

