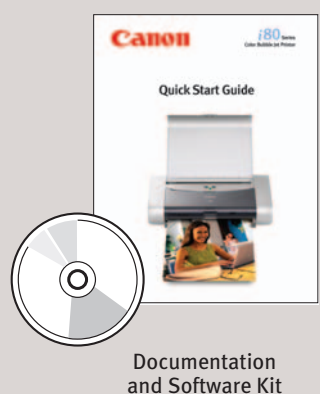
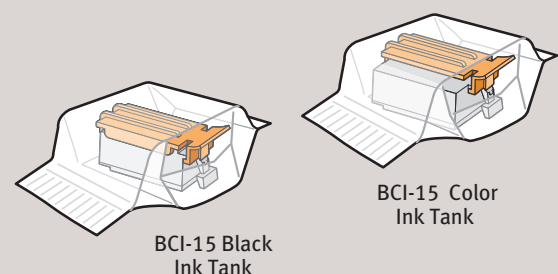
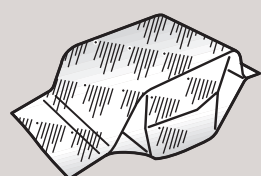
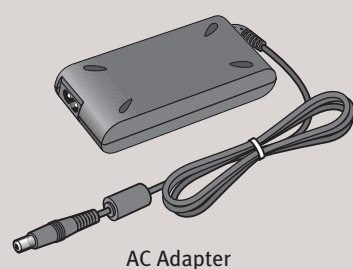
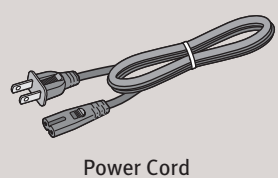
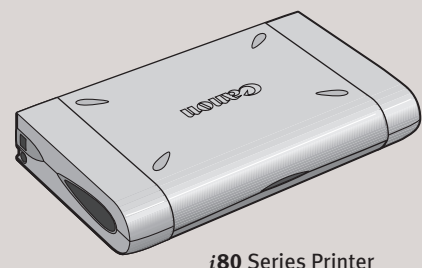


1 Unpack the Printer

- 1 Carefully remove all items from the box.

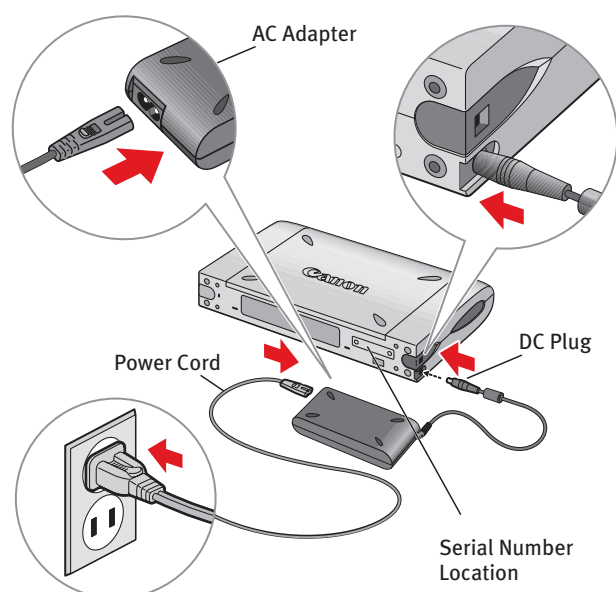


2 Prepare the Printer

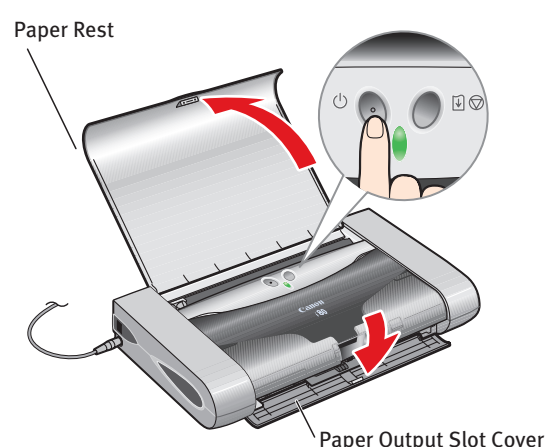
- 1 Remove the shipping materials from the printer.



- 2 Plug the power cord into the AC adapter. Connect the DC plug to the printer. Plug the power cord into a power outlet.

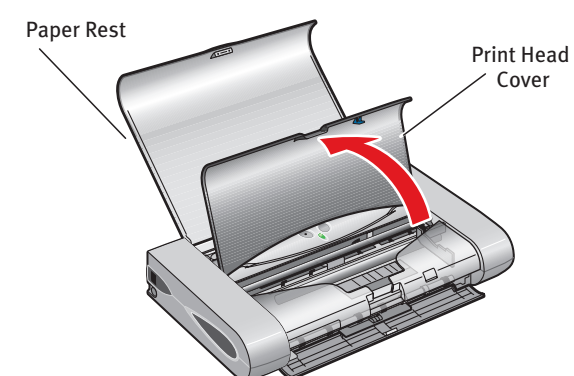


- 3 Lift open the paper rest and **TURN THE PRINTER ON**. The printer will initialize.



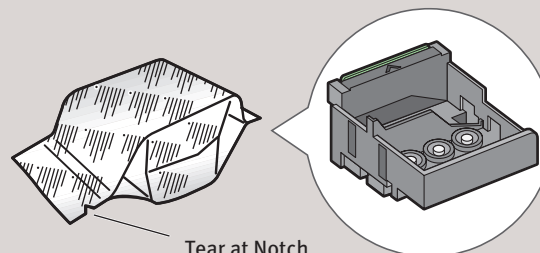
IMPORTANT: Do not open the cover before the printer has finished initializing. Wait until the **POWER** lamp remains fully lit.

- 4 After the printer finishes initializing, open the print head cover.

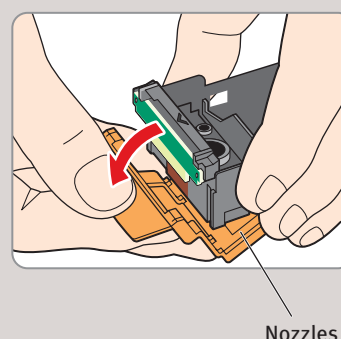


3 Install the Print Head

- 1 Remove the print head from its package.

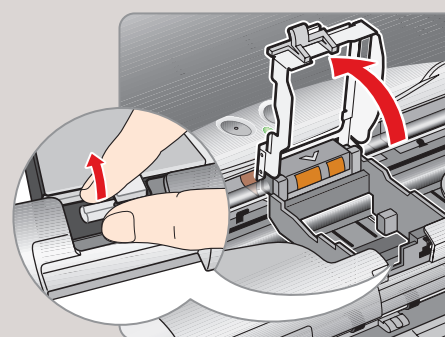


- 2 Remove the protective cap from the print head.

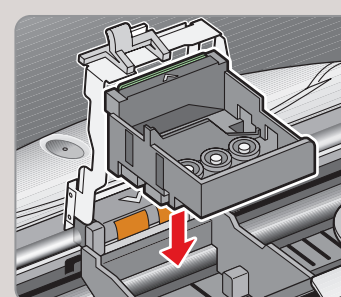


NOTE: Do not touch the print head nozzles.

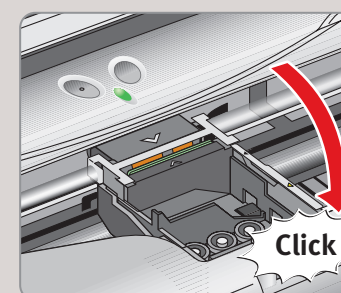
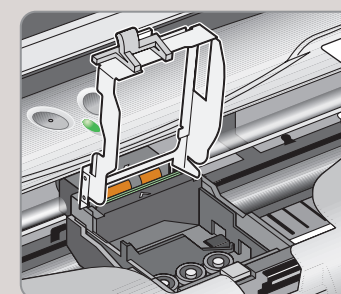
- 3 Press in on the lock button and lift the gray lock lever.



- 4 Place the print head into the holder, by aligning the ∇ mark with the \triangle mark.



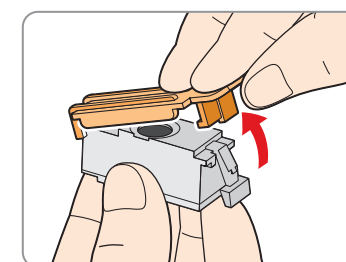
- 5 Lower the lock lever until it clicks into place.



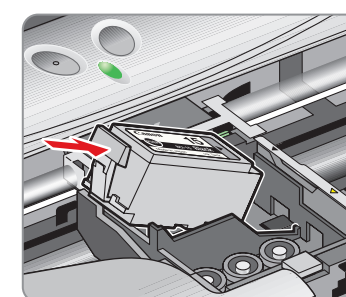
4 Install the Ink Tanks

- 1 Remove the BCI-15 Black Ink Tank from its package.

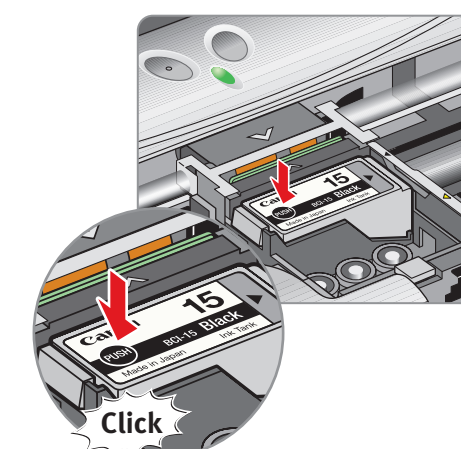
- 2 You **MUST** remove the protective cap.



- 3 Insert the Black Ink Tank into the back slot.

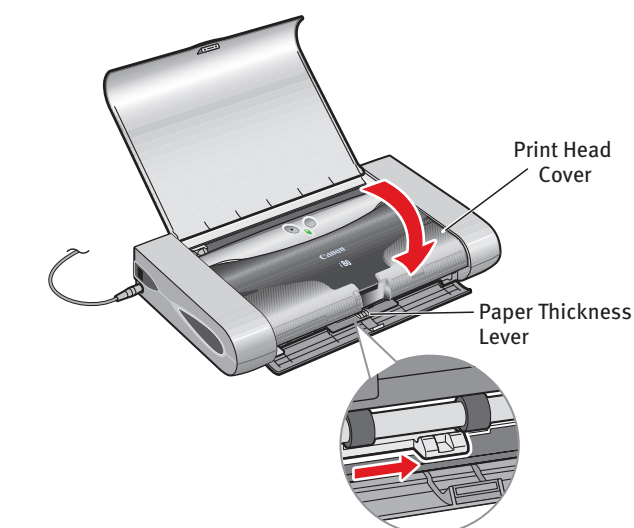


- 4 Press on the **PUSH** area until the ink tank clicks into place.



- 5 Using the procedure above, insert the Color Ink Tank into the front slot.

- 6 Close the print head cover and move the paper thickness lever to the right.



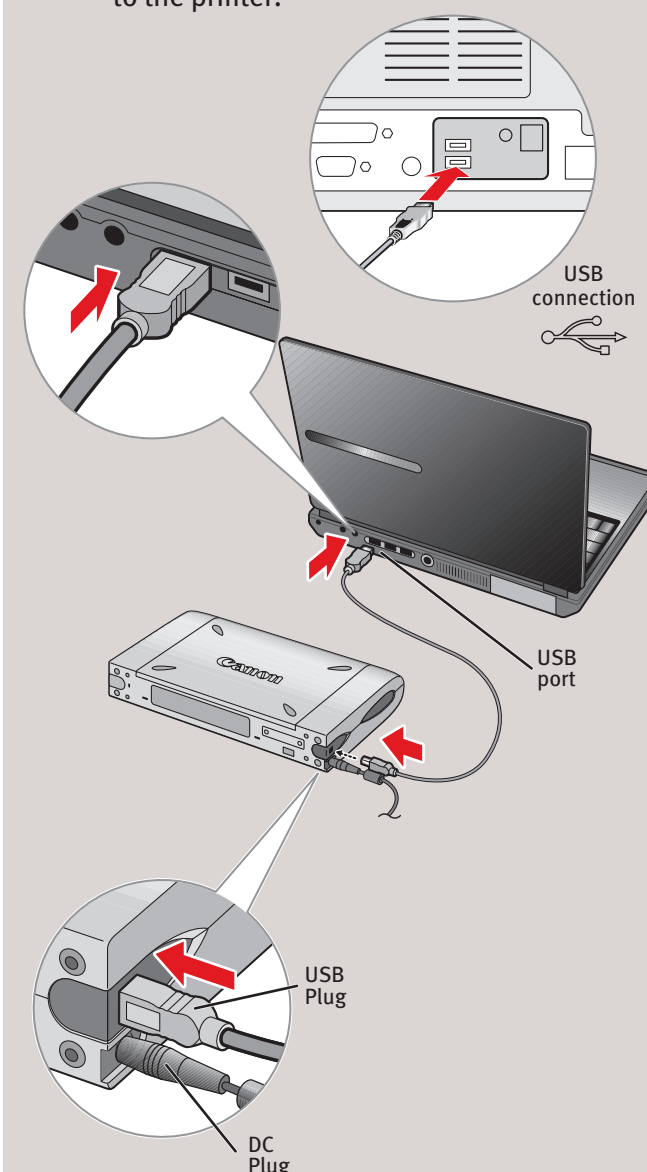
NOTE: The printer will perform a print head cleaning after the cover is closed. Wait until the process is complete before proceeding.

5 Connect Your Printer and Load Paper

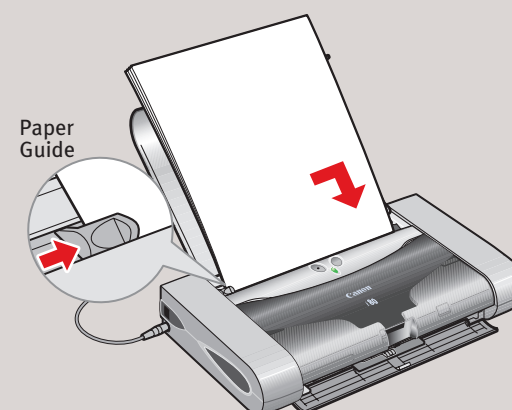
- 1 **TURN THE PRINTER OFF.**

IMPORTANT: Be sure the printer is off before continuing, or the computer will attempt to install the printer driver before the printer is ready.

- 2 Connect the one end of the USB cable to the computer, the other to the printer.



- 3 Slide the paper guide to the left. Load a sheet of blank paper in the paper rest. Slide the guide toward the left edge of the paper.



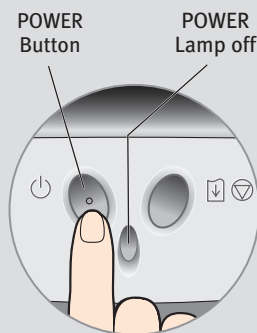
Continue with Step 6 on side two.



6 Windows® Printer Driver Installation and Print Head Alignment

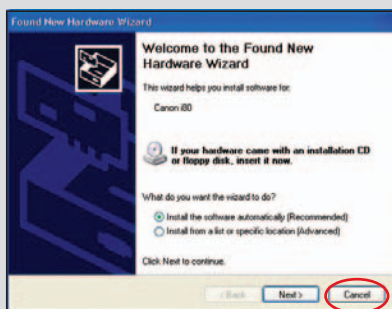
Windows

- 1 Be sure to **TURN THE PRINTER OFF** before continuing.



NOTE: For Windows® XP or Windows 2000, log on to Windows as an Administrator before continuing.

IMPORTANT: If you see the Found New Hardware Wizard, click **Cancel**.

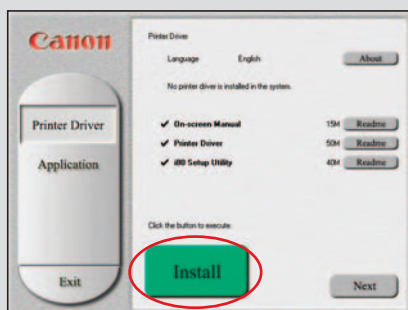


- 2 Close any open software applications, (including anti-virus, computer security, and other software) then insert the “Setup Software & User's Guide” CD-ROM. The setup program should run automatically.

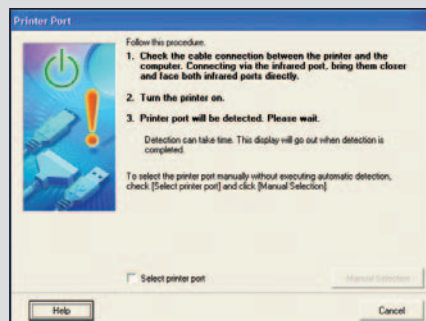
NOTE: If the setup program does not run automatically, Click **Start**, then **Run**, then type **D:\msetup.exe**, where D is your CD-ROM drive.

- 3 Read the License Agreement, then click **Yes**.

- 4 When the main menu appears, click **Install**.



- 5 When the Printer Port window appears, **TURN THE PRINTER ON**. The software will begin identifying the printer port being used.

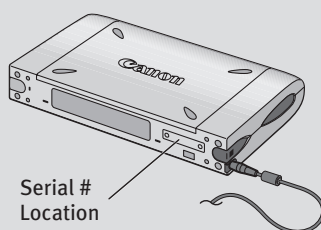


IMPORTANT: If your computer cannot detect a printer port, click **Help**, and refer to the online instructions.

- 6 When the Registration window appears. Follow the on-screen instructions to ensure product support.



NOTE: The serial number is located on the back of the printer.



- 7 When the Terminate Installation window appears, click **OK**.

- 8 When the software menu appears, click **Install**, then follow the on-screen instructions.



- 9 When the Terminate Installation window appears, click **OK**, then **Exit**.

- 10 Click **Yes**, when you are prompted to restart your computer.

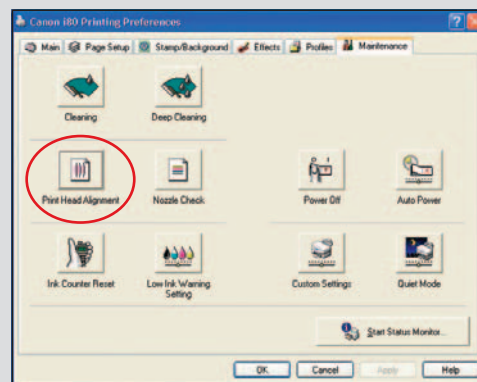
- 11 Start the print head alignment procedure.

a. For Windows XP click **Start**, select **Control Panel, Printers and Other Hardware**, then **Printers and Faxes**.

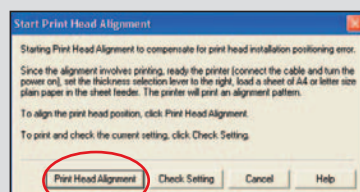
b. Right-click the **i80** icon, then click **Printing Preferences**.

NOTE: For Windows 98/Me/2000 click **Start**, then select **Settings, Printers**. Right-click the **i80** icon, then click **Properties**.

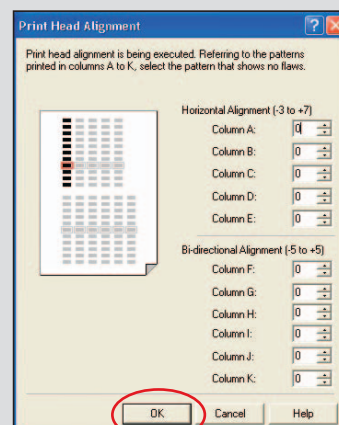
c. Click the **Maintenance** tab, then click on the **Print Head Alignment** icon.



d. When asked to start the print head alignment, click **Print Head Alignment** and follow the on-screen instructions.



e. Look at the printed patterns and input the values for each pattern that shows no flaws (least number of white stripes). Then click **OK**.



- 12 Click **OK** to exit the Maintenance tab. Print head alignment is now complete.

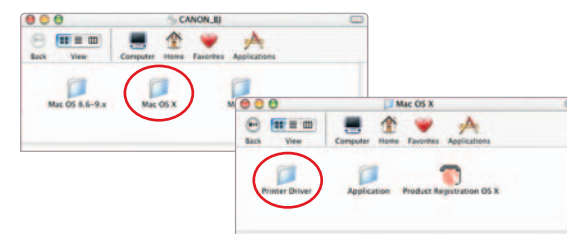
6 Mac® OS X Printer Driver Installation and Print Head Alignment

Macintosh

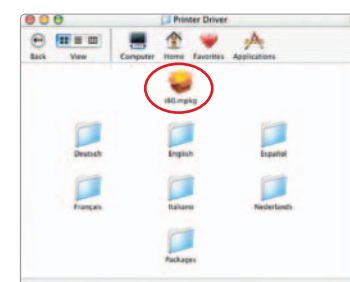
NOTE: For Mac OS 8.6 to 9.x printer driver instructions, refer to the “Appendix” of the *Quick Start Guide*.

- 1 Turn on your Mac and insert the “Setup Software & User's Guide” CD-ROM. **TURN THE PRINTER ON**.

- 2 Double-click the CD-ROM icon, then the **Mac OS X** folder, then the **Printer Driver** folder.



- 3 Double-click the **i80.mpkg** icon.

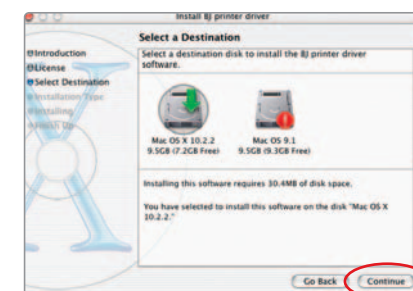


- 4 When the “Authenticate” screen appears, enter your administrator name and password, then click **OK**.

- 5 When the “Welcome to the BJ printer driver Installer” screen appears, click **Continue**.

- 6 Read the Software License Agreement and click **Continue**, then click **Agree**.

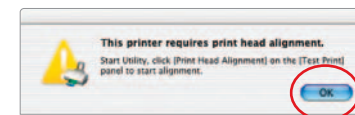
- 7 Select a destination for the printer driver to be installed. Then click **Continue**.



- 8 Click **Install**. When a message asking for your confirmation to proceed with the installation appears, click **Continue Installation**.

- 9 When the message “The software was successfully installed” appears, click **Restart**.

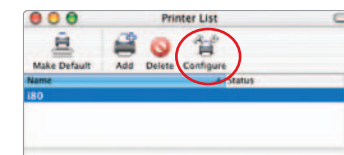
- 10 When the message asking you to align the print head appears, click **OK**.



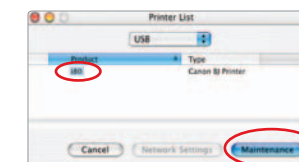
- 11 Start the print head alignment procedure.

a. Double-click the **Macintosh HD** icon, then **Applications** folder. Double-click the **Utilities** folder, then the **Print Center** icon.

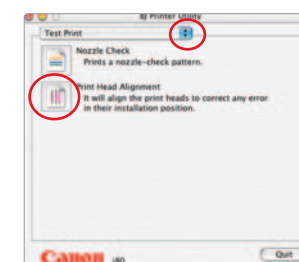
b. When the Printer List screen appears, select **i80**, then click the **Configure** icon.



c. Select **i80** and click **Maintenance**.

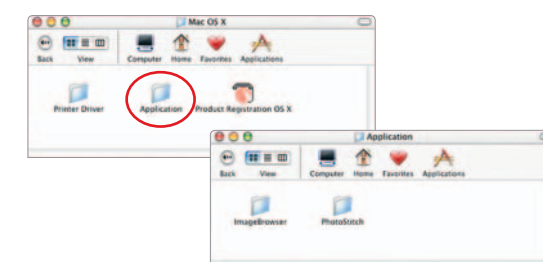


d. Click the down-arrow to select **Test Print**. Click the **Print Head Alignment** icon and follow the on-screen instructions.



- 12 Click **Quit** to exit the BJ Printer Utility. Print head alignment is now complete.

- 13 Access your CD-ROM Application folder and double-click on the software to be installed.



- 14 Follow the on-screen instructions. When the “Installation is Complete” screen appears, click **OK**.

- 15 Double-click on the **Product Registration** icon, found in the **Mac OS X** folder. Register your product to ensure product support. Follow the on-screen instructions.