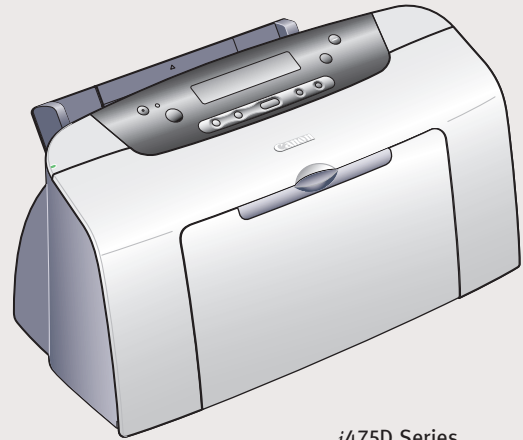
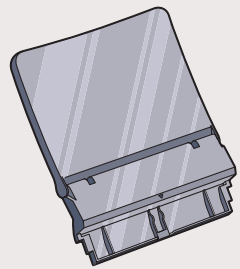


### 1 Unpack the Printer

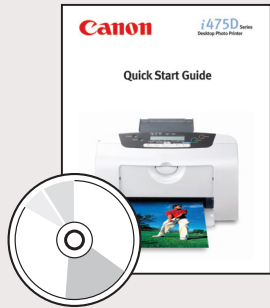
- 1 Carefully remove all items from the box.



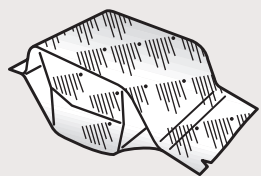
i475D Series  
Desktop Photo Printer



Paper Rest



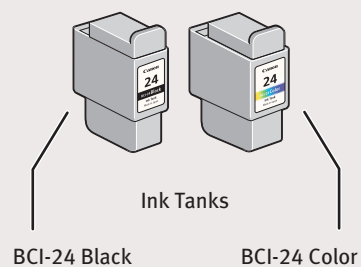
Documentation  
and Software Kit



i475D Series Print Head



Power Cord



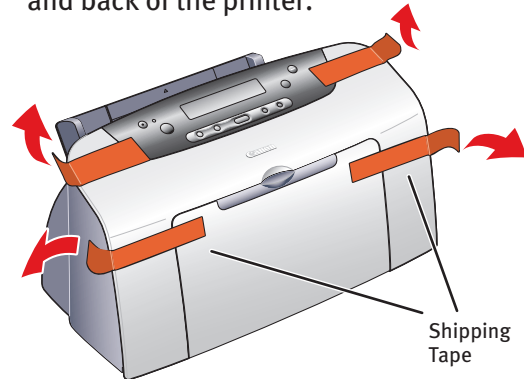
Ink Tanks

BCI-24 Black

BCI-24 Color

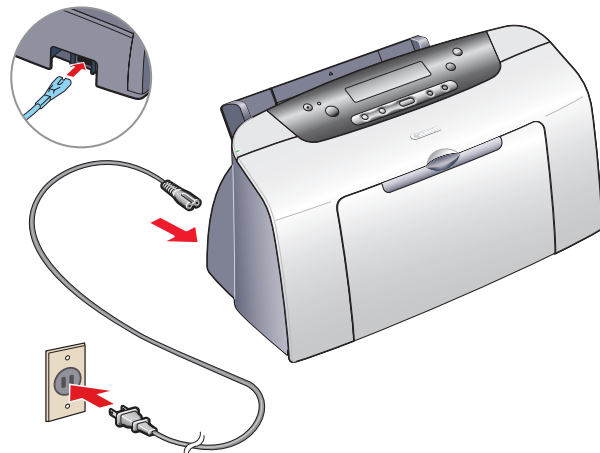
### 2 Prepare the Printer

- 1 Remove all shipping tape from the front and back of the printer.

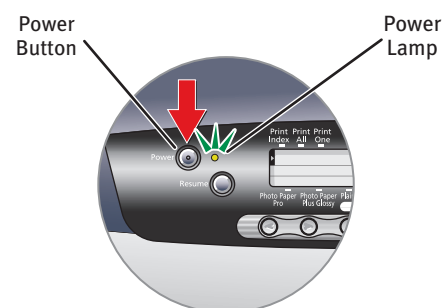


Shipping  
Tape

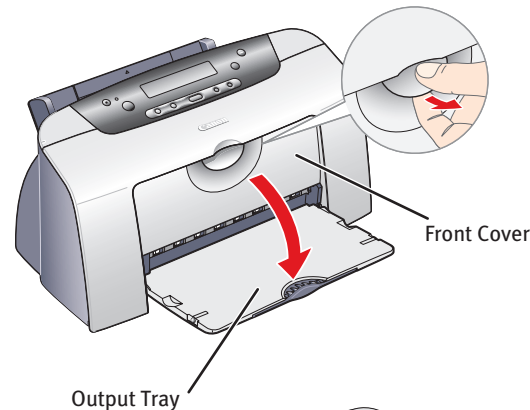
- 2 Plug the power cord into the back of the printer and connect the other end to a power outlet.



- 3 Press the Power button. The printer will initialize.

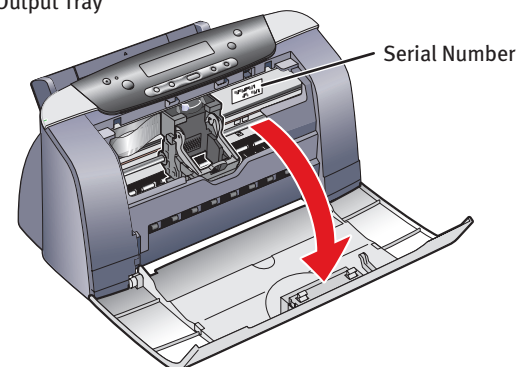


- 4 Open the output tray, then open the front cover. The print head holder automatically moves to the center.



Front Cover

Output Tray

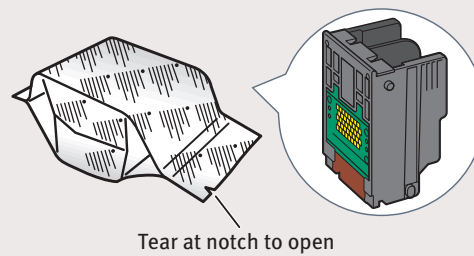


Serial Number

- 5 Write down the serial number located to the right of the print head holder. You will need this later to register the product.

### 3 Install the Print Head

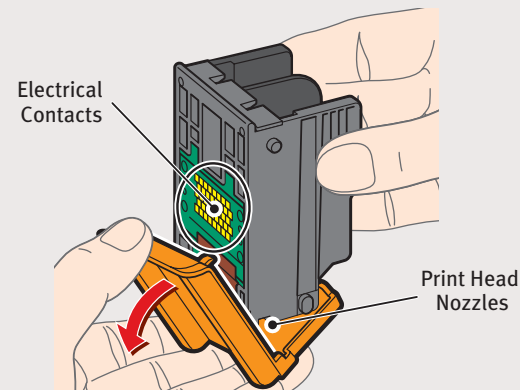
- 1 Remove the print head from its package.



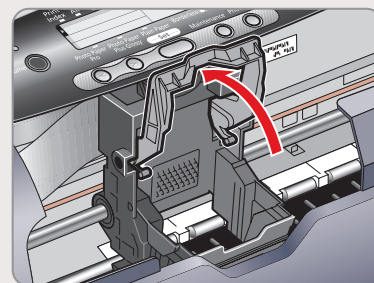
Tear at notch to open

- 2 Remove the orange protective cap.

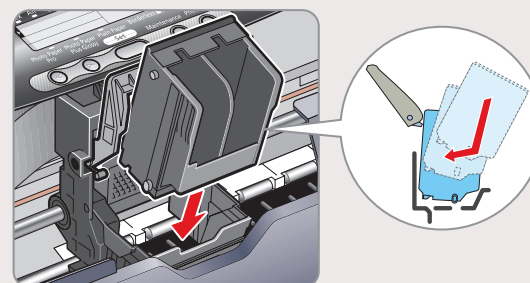
- NOTE:** Do not touch the electrical contacts or the print head nozzles.



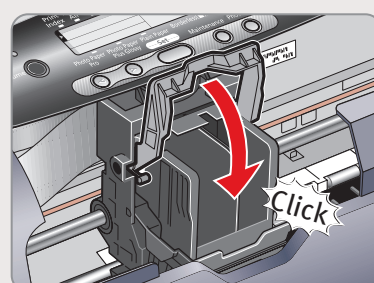
- 3 Raise the gray lock lever on the printer.



- 4 Slide the print head into the holder until it is securely seated. Do not press it down.



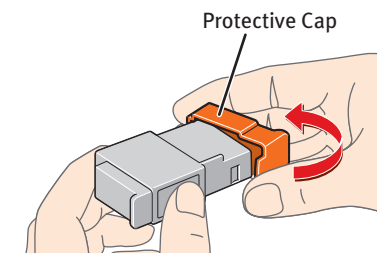
- 5 Lower the lever until it clicks into place.



### 4 Install the Ink Tanks

- 1 Remove the black ink tank (BCI-24 Black) from its package and pull off the orange protective cap.

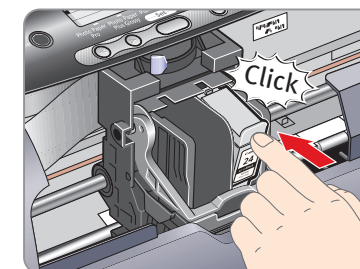
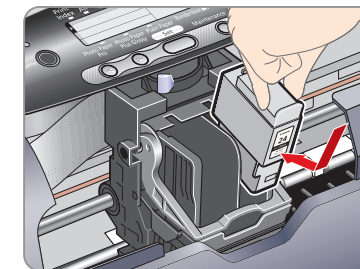
- NOTE:** Avoid ink at the bottom of the tank.



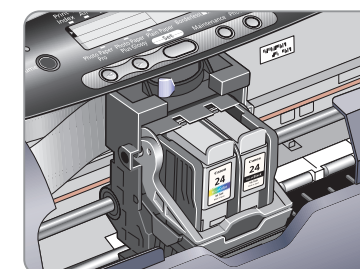
Protective Cap

- 2 Insert the black ink tank into the slot on the right, then push in until the ink tank clicks into place.

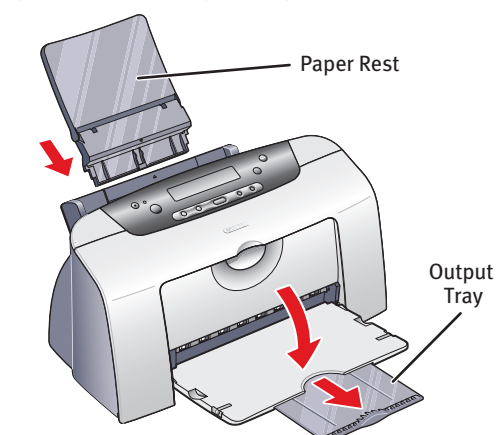
- IMPORTANT:** For correct printer operation, make sure ink tanks are secure in slots.



- 3 Repeat the procedure for the color ink tank (BCI-24 Color), inserting it into the remaining slot.



- 4 Close the front cover, attach the paper rest and pull out the output tray.



Paper Rest

Output Tray

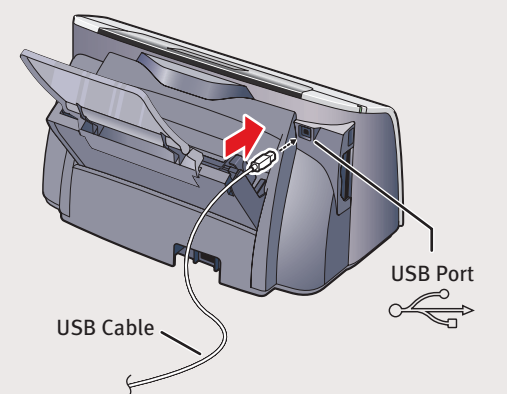
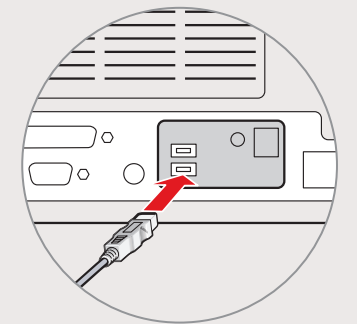
- NOTE:** The printer will perform a print head cleaning after the cover is closed.

### 5 Connect the Printer and Load Paper

- 1 Turn the printer off.

- IMPORTANT:** Be sure printer is off before continuing, or the computer will attempt to install the printer driver before the printer is ready.

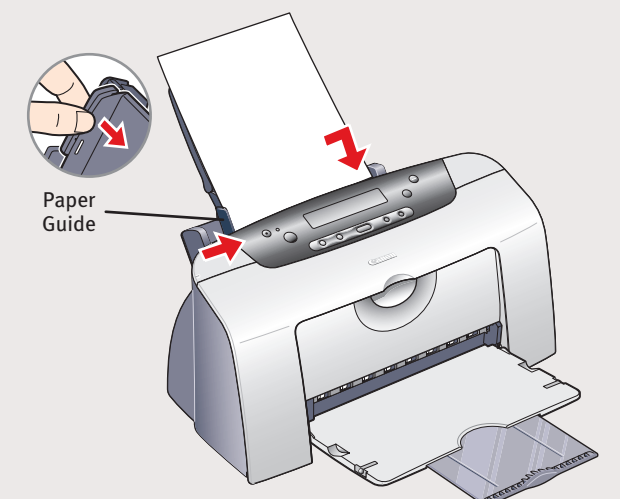
- 2 Connect one end of a USB cable to the computer, the other to the printer.



USB Port

USB Cable

- 3 Pinch the paper guide and slide it to the left. Load a sheet of blank paper in the paper rest. Slide the guide toward the left edge of the paper.



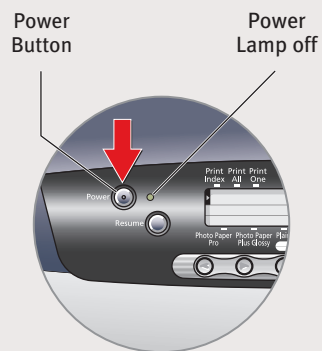
Paper Guide

Continue with Step 6  
on side two.



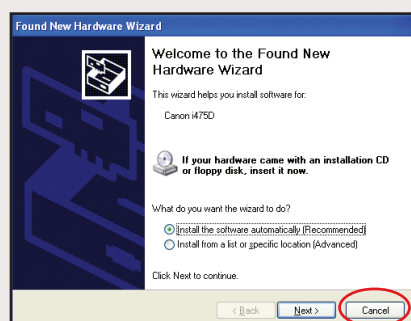
## 6 Windows® Printer Driver Installation and Print Head Alignment

- 1 Be sure to **TURN THE PRINTER OFF**.



**NOTE:** For Windows® XP or Windows 2000, log on to Windows as an Administrator before continuing.

**IMPORTANT:** If you see the Found New Hardware Wizard, click **Cancel**.

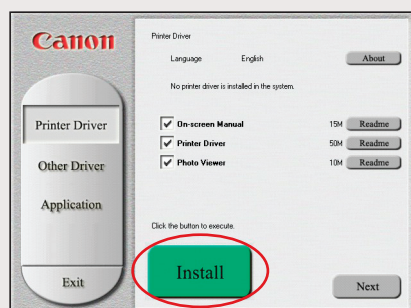


- 2 Close any open software applications, then insert the “Setup Software & User's Guide” CD-ROM. The setup program should run automatically.

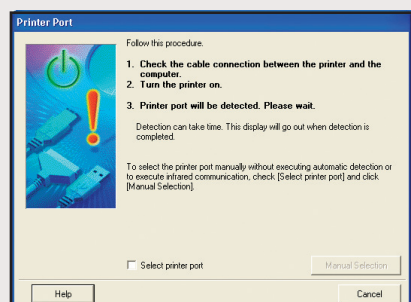
**NOTE:** If the setup program does not run, click **Start**, then **Run**, then type **D:\msetup.exe**, where **D** is your CD-ROM drive.

- 3 Read the License Agreement, then click **Yes** to continue.

- 4 When the main menu appears, click **Install**.

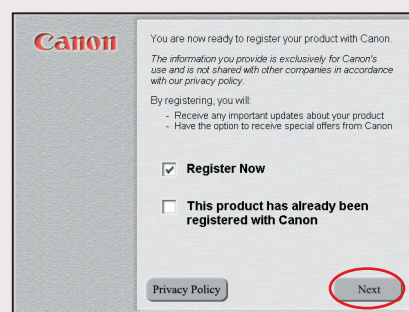


- 5 When the Printer Port window appears, **TURN THE PRINTER ON** so the printer port (connection) can be automatically detected.



**IMPORTANT:** If your computer cannot detect a printer port, click **Help** and refer to the online instructions.

- 6 Register your product to ensure product support. Follow the on-screen instructions.



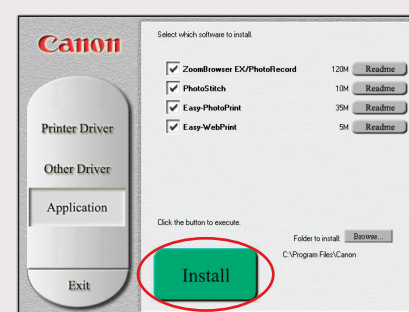
- 7 When the Terminate Installation window appears, click **OK**.

- 8 When the Other Driver screen appears, click **Install**. Then follow the on-screen instructions.



- 9 When the Terminate Installation window appears, click **OK**.

- 10 When the software window appears, click **Install**.



- 11 When the Terminate Installation window appears, click **OK**, then **Exit**.

- 12 Click **Yes** when you are prompted to restart your computer.

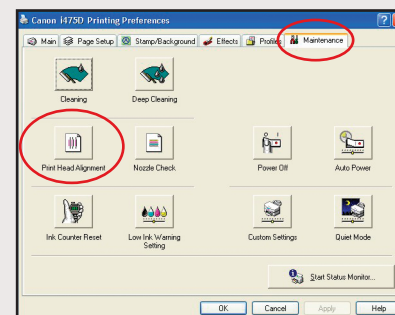
- 13 Start the print head alignment procedure.

- a. For Windows XP/2000, click **Start**, select **Control Panel**, **Printers and Other Hardware**, then **Printers and Faxes**.

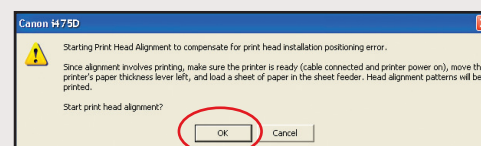
- b. Right-click the **Canon i475D** icon, then click **Printing Preferences**.

**NOTE:** For Windows 98/Me, click **Start**, **Settings**, then **Printers**. Right-click the **Canon i475D** icon, then click **Properties**.

- c. Click the **Maintenance** tab, then click the **Print Head Alignment** icon.



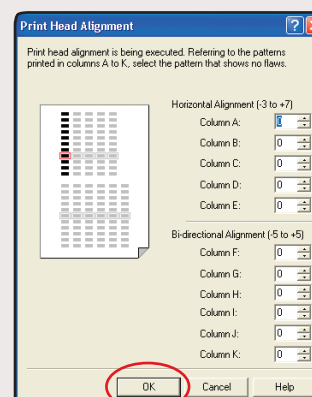
- d. When asked to start the print head alignment, click **OK** and follow the on-screen instructions.



- e. Click **YES** when prompted if the pattern printed successfully.

- 14 Compare the different patterns for each color on the printout.

- 15 For each color on the test printout, enter the number in the Print Head Alignment window that corresponds with the smoothest looking test pattern.



- 16 Click **OK** when finished.

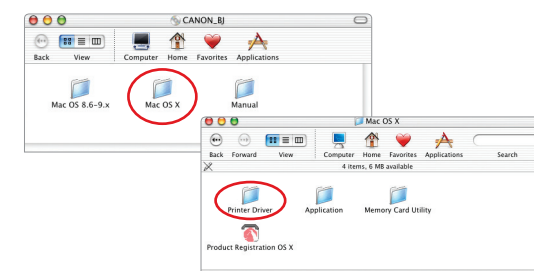
- 17 Click **OK** to exit the Maintenance tab. Print head alignment is now complete.

## 6 Mac® OS X Printer Driver Installation and Print Head Alignment

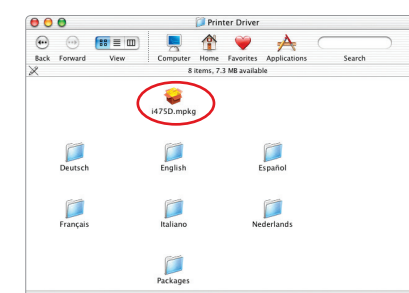
For Mac OS 8.6 to 9.x printer driver instructions, refer to the "Appendix" of the *Quick Start Guide*.

- 1 Turn on your Mac and your printer and insert the “Setup Software & User's Guide” CD-ROM.

- 2 Double-click the CD-ROM icon, then the **Mac OS X** folder, then the **Printer Driver** folder.



- 3 Double-click the **i475D.mpkg** icon.

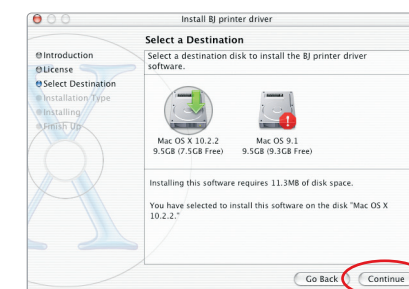


- 4 When the “Authenticate” screen appears, enter your administrator name and password, then click **OK**.

- 5 When the “Welcome to the BJ printer driver Installer” screen appears, click **Continue**.

- 6 Read the Software License Agreement and click **Continue**, then click **Agree**.

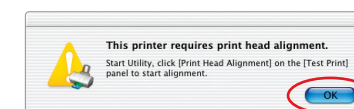
- 7 Select a destination for the printer driver to be installed. Then click **Continue**.



- 8 Click **Install**. When a message asking for your confirmation to proceed with the installation appears, click **Continue Installation**.

- 9 When the message “The software was successfully installed” appears, click **Restart**.

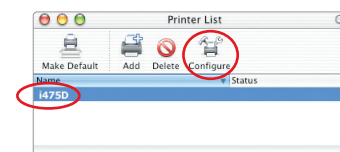
- 10 When the message asking you to align the print head appears, click **OK**.



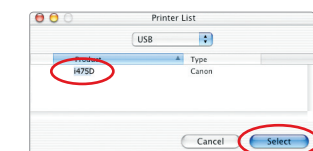
- 11 Start the print head alignment procedure.

- a. Double-click the **Macintosh HD** icon, then **Applications** folder. Double-click the **Utilities** folder, then the **Print Center** icon.

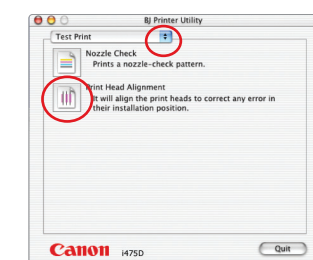
- b. When the Printer List screen appears, select **i475D**, then select **Configure** icon.



- c. Select **i475D**, and click **Select**.



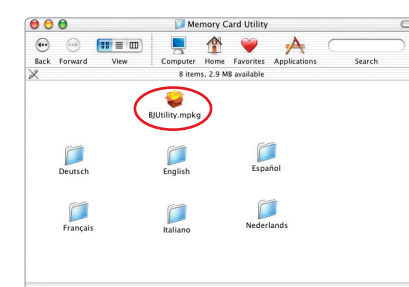
- d. Click the down-arrow to select **Test Print**. Click the **Print Head Alignment** icon and follow the on-screen instructions.



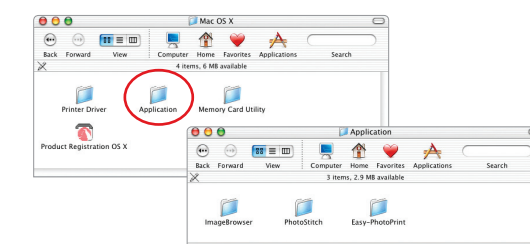
- 12 Click **Quit** to exit the BJ Printer Utility. Print head alignment is now complete.

- 13 Double-click the **Mac OS X** folder, then the **Memory Card Utility** folder.

- 14 Double-click the **BJUtility.mpkg** icon and follow the on-screen instructions. Click **Restart**.



- 15 Access your CD-ROM again. From the **Application** folder, double-click on the software you want to install. Follow the on-screen instructions.



- 16 When the "Installation is completed" screen appears, click **OK**.

- 17 Register your product to ensure product support. Double-click on the **Product Registration** icon, found in the **Mac OS X** folder. Follow the on-screen instructions.