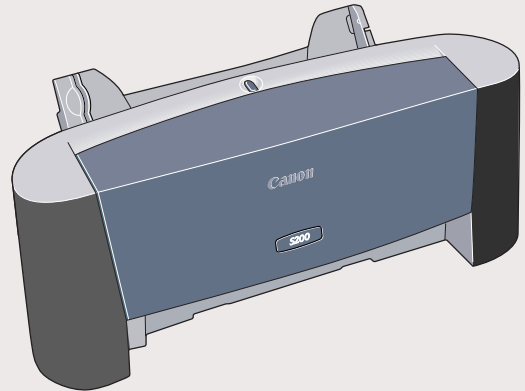
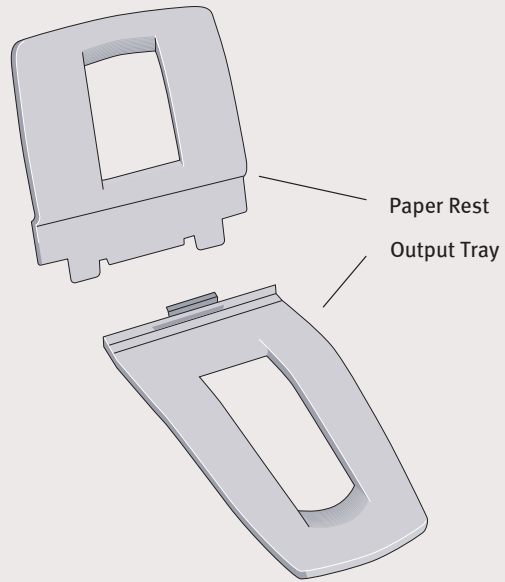


1 Unpack the Printer

- 1 Carefully remove all items from the box.



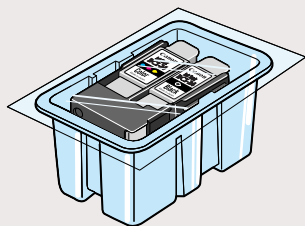
S200 Series
Color Bubble Jet Printer



Paper Rest
Output Tray



Documentation
and Software Kit



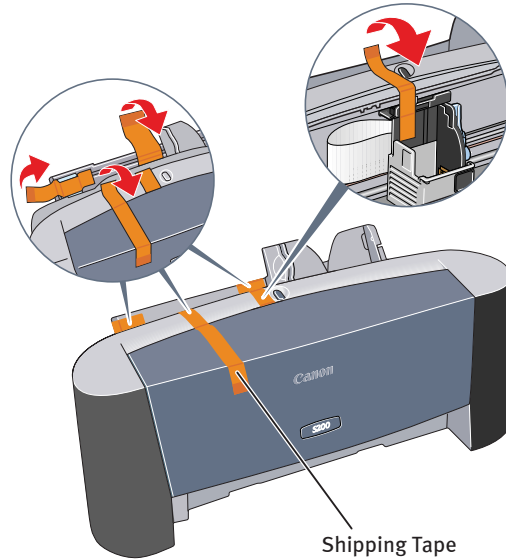
Printhead (ink tanks are included)



Power Cord

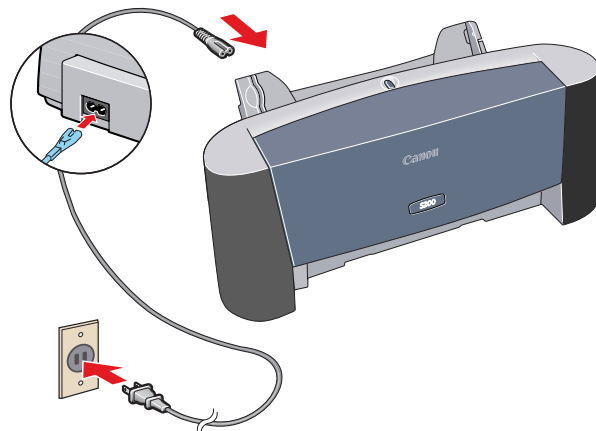
2 Prepare the Printer

- 1 Remove the shipping tape from the front, sides and inside of the printer.



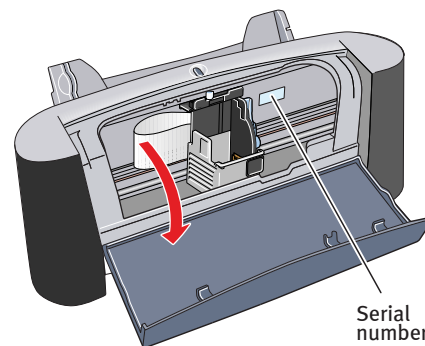
Shipping Tape

- 2 Plug the power cord into the back of the printer and connect the other end to a power outlet.



The printer automatically turns on when the printer is plugged in.

- 3 Open the front cover. The printhead holder automatically moves to the center.

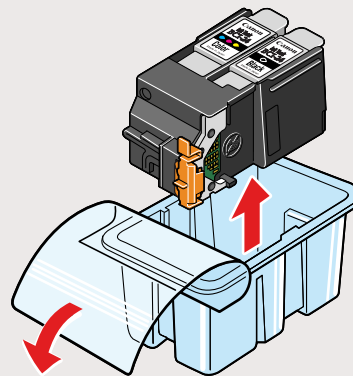


Serial number

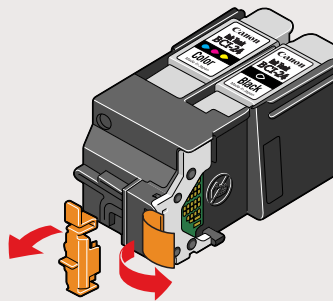
- 4 Write down the serial number located to the right of the printhead. You will need this later to register the product.

3 Prepare the Printhead

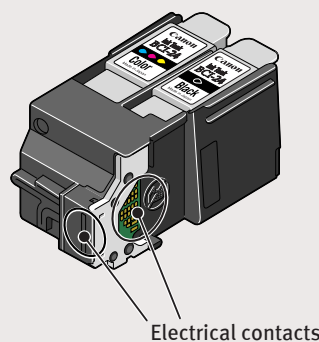
- 1 Remove the printhead from its package.



- 2 Remove the protective cap and tape from the printhead.



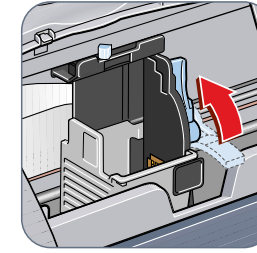
NOTE: Do not touch the electrical contacts.



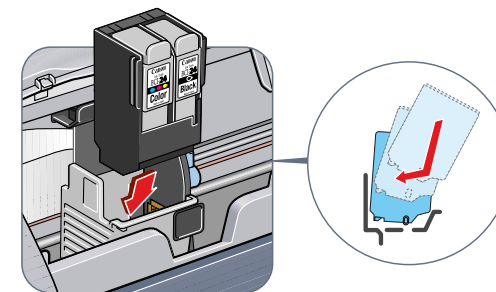
Electrical contacts

4 Install Printhead

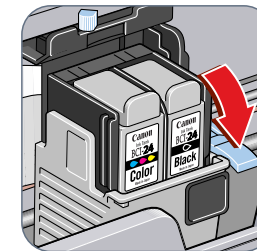
- 1 Ensure that the blue lock lever is raised.



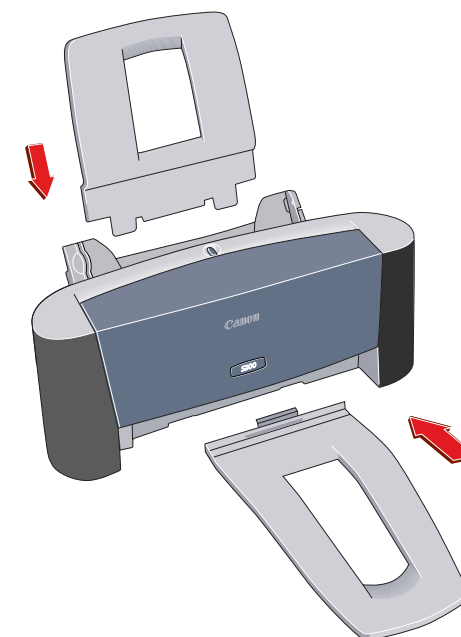
- 2 Gently slide the printhead into the holder until it is securely seated. Do not press it down.



- 3 Lower the lock lever until it locks into place.



- 4 Close the front cover and attach the paper rest and output tray.



- 5 Place a stack of blank paper (up to 50 sheets) in the paper rest.

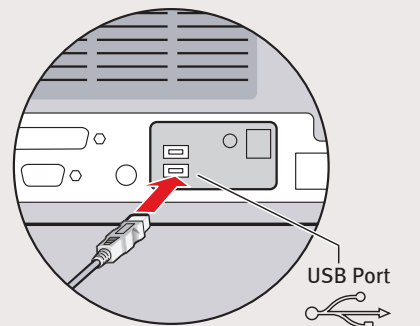
5 Connect the Printer To Your Computer

- 1 Unplug the power cord from the back of the printer.

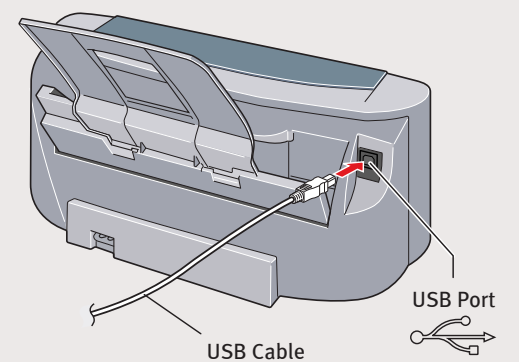
IMPORTANT: Be sure printer is unplugged before continuing, or the computer will attempt to install the printer driver before the printer is ready.

- 2 Turn your computer off.

- 3 Connect one end of a USB cable (not included) to the computer, the other to the printer.



USB Port



USB Cable

Continue with Step 6 on side two.



6 Install the Printer Driver (Windows®)

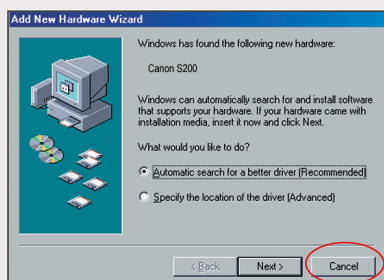
1 Be sure the printer is unplugged and your computer is turned off before continuing.

2 Turn your computer on.

NOTE: For Windows XP™ and 2000, log on to Windows as an Administrator before continuing.

Driver features and screen shots shown here may differ from your screen depending on the version of Windows you are using.

IMPORTANT: Click **Cancel** if you see a screen that says "New Hardware Found", "Update Device Driver Wizard" or "Add New Hardware Wizard":



3 Close any open software applications, including any virus detection programs, then insert the S200 Setup Software & User's Guide CD-ROM. The setup program should run automatically.

NOTE: If the setup program does not run, click **Start**, then **Run**, then type **X:\msetup.exe**, where **X** is your CD-ROM drive.

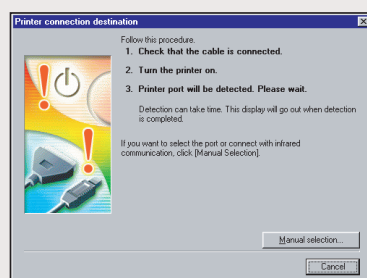
4 Read the License Agreement, then click **Yes** if you agree.

5 When the main menu appears, ensure that the Printer Driver is selected, then click **Install**.



NOTE: If you are prompted to restart Windows, remove the CD-ROM, then click **OK**. After the computer restarts, insert the CD-ROM and continue.

6 When the Printer connection destination window appears, **PLUG THE PRINTER IN** so the printer port (connection) can be automatically detected.



The software will begin identifying the printer port being used.

IMPORTANT: If your computer cannot detect a printer port, refer to the Troubleshooting chapter in the *S200 Quick Start Guide* for instructions.

7 When the Installation Complete window appears, click **OK**.

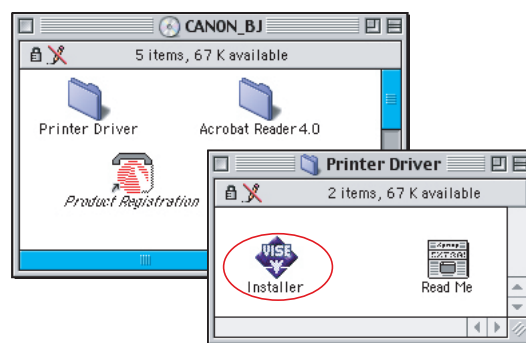
8 When the installation and registration process has completed, click **Exit**. If you are prompted to restart the computer, click **Yes**.

NOTE: Remember to register your product to ensure product support. The serial number is located on the inside of the printer, to the right of the printhead holder.

6 Install the Printer Driver (Macintosh®)

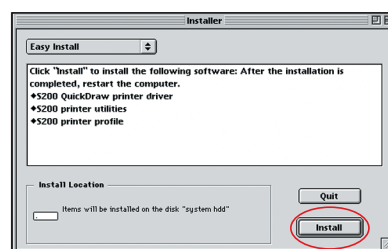
1 Be sure the printer is plugged in. Turn your Mac on, then insert the S200 Setup Software & User's Guide CD-ROM.

2 Open the printer driver folder on the CD-ROM, then double-click the **Installer** icon.



3 Read the License Agreement, then click **Accept** if you agree.

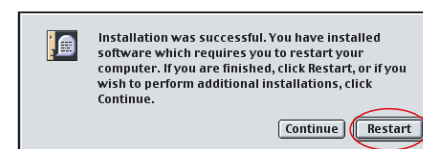
4 Click **Install**. The printer driver will load automatically.



5 If the message "No other applications can be running..." displays, click **Continue**.



6 When the installation and registration process has completed, click **Restart**.

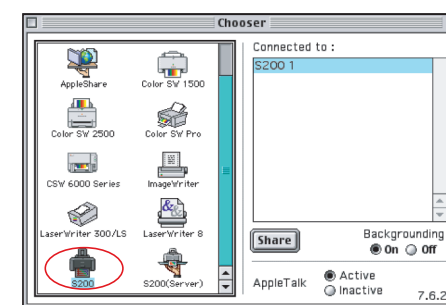


NOTE: Remember to register your product to ensure product support. The serial number is located on the inside of the printer, to the right of the printhead holder.

7 After the computer restarts, select the **Apple** menu, then **Chooser**.



8 Click the **S200** icon in the Chooser. The printer name will highlight and move to the right panel.



NOTE: To use the BJ Print Monitor, set the **Backgrounding** button to the **On** position.

9 Close the Chooser.

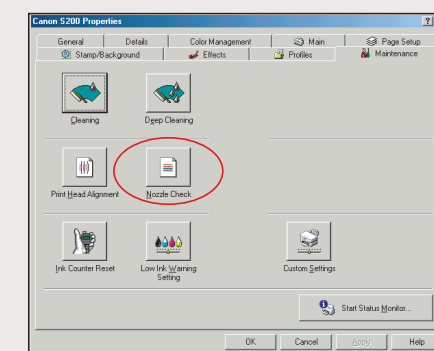
7 Check the Nozzle Pattern

1 With the printer on, place a stack of blank paper in the paper rest.

2 Print a nozzle check pattern:

Windows:

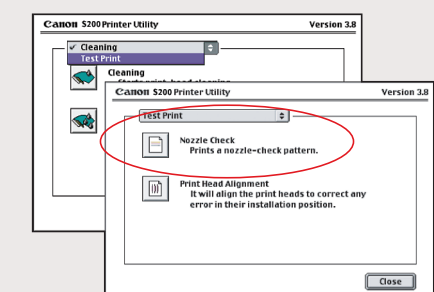
- Click **Start**, then **Settings**, then **Printers**.
- Right-click the **Canon S200** icon, then click **Properties**.
- Click the **Maintenance** tab, then click the **Nozzle Check** icon.



d. When prompted to print, click **OK**.

Macintosh:

- From the **File** menu in a software application, click **Page Setup**.
- Click the **Utilities** button.
- Click the down-arrow to select **Test Print**.
- Click the **Nozzle Check** icon.



e. When prompted to print, click **OK**.

3 Examine the printed nozzle check pattern to check if all colors (yellow, magenta, cyan and black) are printed, and all lines are drawn completely.

If there are any inconsistencies in the colors or patterns, see the *S200 Quick Start Guide* for how to clean the printhead.

4 Click **OK** (Windows) or **Close** (Macintosh) when finished.