

BUBBLE JET PRINTER

S200

Quick Start Guide

Table of Contents

Preface	1
Shipping Materials	1
Introduction	1
Setting Up	2
Preparing the Printer	2
Connecting the Printer to the Computer	3
Installing the BJ Cartridge	4
Loading Paper	6
Installing the Printer Driver	7
Printing the Nozzle Check Pattern	11
Basic Operations	14
Printing with Windows	14
Printing with Macintosh	16
Print Head Maintenance	18
Notes on Handling the USB Interface (for Windows Users)	19
For Further Details...	20

Canadian Radio Interference Regulations

This digital apparatus does not exceed the Class B limits for radio noise emissions from a digital apparatus as set out in the interference-causing equipment standard entitled “Digital Apparatus”, ICES-003 of the Industry Canada.

Cet appareil numérique respecte les limites de bruits radioélectriques applicables aux appareils numériques de Classe B prescrites dans la norme sur la matériel brouilleur: “Appareils Numériques”, NMB-003 édictée par l’Industrie Canada.

International ENERGY STAR® Program

As an ENERGY STAR® Partner, Canon Inc. has determined that this product meets the ENERGY STAR guidelines for efficiency.



The International ENERGY STAR® Office Equipment Program is a global program that promotes energy saving through the use of computer and other office equipment. The program backs the development and dissemination of products with functions that effectively reduce energy consumption. It is an open system in which business can participate voluntarily. The targeted products are office equipment such as computers, monitors, printers, faxes and copiers. Their standards and logos are uniform among participating nations.

Power Requirements

Never use a power supply voltage other than that supplied in the country of purchase. Using the incorrect voltage could cause a fire or electric shock. The correct power supply voltages and frequencies are as follows:

Europe	AC 230V±10%, 50Hz
USA/Canada	AC 120-127V, 60Hz
Australia	AC 240V, 50Hz

Preface

Shipping Materials

Thank you for purchasing a Canon Bubble Jet Printer.

Check that all the following items are in the box. If anything is missing or is damaged, contact your Canon Authorised Dealer or Sales Representative.

- ☐ Printer
- ☐ Setup Software & User's Guide CD-ROM
- ☐ Quick Start Guide
- ☐ BJ Cartridge (print head plus two ink tanks)

* A USB cable should be purchased separately according to your computer. For details on cable specifications, refer to page 3.

Introduction

This Quick Start Guide uses the following symbols to indicate important information. Always observe the instructions indicated by these symbols.

Warning

Instructions that, if ignored, could result in death or serious personal injury caused by incorrect operation of the equipment. These must be observed for safe operation.

Caution

Instructions that, if ignored, could result in personal injury or material damage caused by incorrect operation of the equipment. These must be observed for safe operation.

Also read the Safety Precautions in the User's Guide. Observe the warnings and cautions to avoid personal injury or damage to the printer.

Trademark Notices

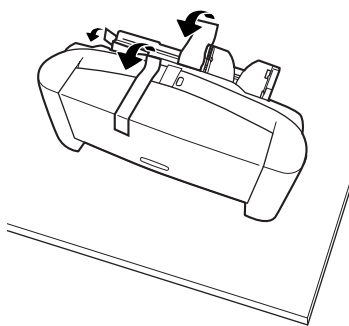
- Canon® is a registered trademark of Canon Inc.
- BJ™ is a trademark of Canon Inc.
- Microsoft® and Windows® are registered trademarks of Microsoft Corporation in the U.S. and other countries.
- Apple, Mac, Macintosh are trademarks of Apple Computer, Inc., registered in the U.S. and other countries.
- All other trademarks and registered trademarks appearing in this Quick Start Guide are the property of their respective owners.

Copyright ©2001 CANON INC.

All rights reserved. No part of this publication may be transmitted or copied in any form whatsoever without the express written permission.

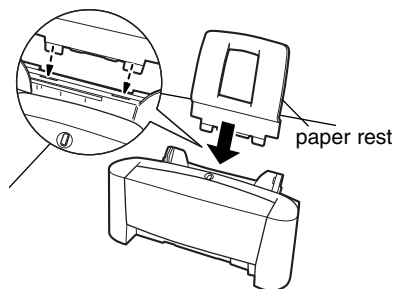
Setting Up

1 ■ *Preparing the Printer*

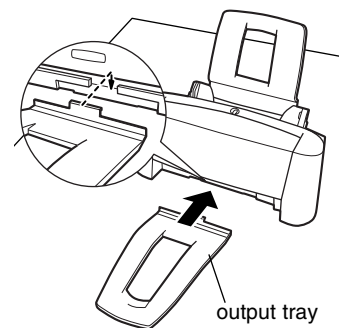


- 1** Place the printer on a flat surface.
- 2** Remove the tape from the printer as shown.

Ensure to remove the tape inside the printer.



- 3** Attach the paper rest to the sheet feeder.

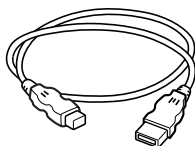


- 4** Attach the output tray as shown.

2 Connecting the Printer to the Computer

Use a USB cable.

USB cable



Recommended: Canon or other computer manufacturer cable, up to 5 meters in length.

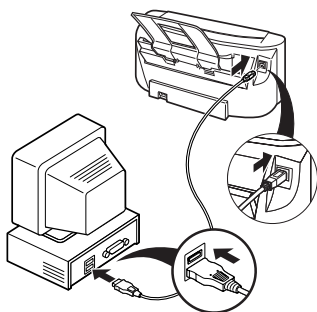
Note

If the Add New Hardware Wizard or Found New Hardware Wizard screen appears when carrying out the following operations, click **Cancel** and turn off the computer.



Follow the steps below to install the printer driver correctly.

- 1** Unplug the printer and ensure the computer is switched off.
- 2** Connect the cable.



Notes

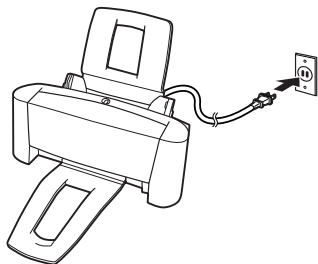
- If your computer has an earth connection, make sure that this is attached.
- If you do not intend to use the printer for a long period of time, unplug the power cord from the power outlet.

3 ■ Installing the BJ Cartridge

Warning

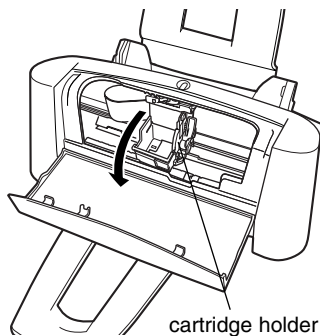
- Never attempt to plug the power cord into the power outlet or unplug the power cord when your hands are wet.
- Never damage, modify, stretch, or excessively bend or twist the power cord. Do not place heavy objects on the power cord.
- Never use any power supply other than the standard power supply available in the country of purchase. Using the incorrect voltage and frequency could cause a fire or electric shock.
- Always push the plug all the way into the power outlet.
- Install only the print head packed in the printer package. Do not install any other print head in any case. It will never work.

■ Installing the BJ Cartridge



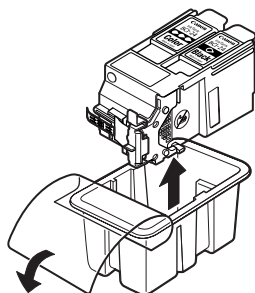
- 1** Plug the printer in. Do NOT turn on the computer yet.

The printer is turned on and enters Standby mode.



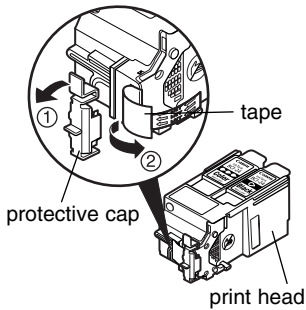
- 2** Open the front cover.

The cartridge holder moves to the centre.



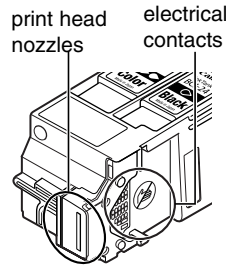
- 3** Unpack the BJ Cartridge.

4 Remove the protective cap and tape from the BJ Cartridge.

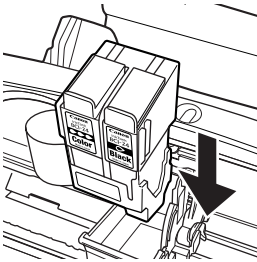


Notes

- Do not touch the print head nozzles or electrical contacts.
- Do not attempt to reattach the protective cap once it has been removed.

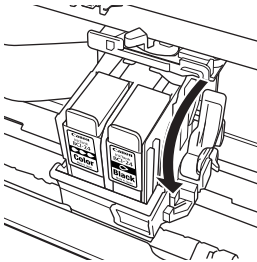


5 Place the BJ Cartridge in the holder.



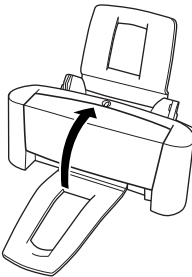
6 Lock the BJ Cartridge into place by lowering the lever.

Do not touch the lock lever once the print head has been installed.



7 Close the front cover.

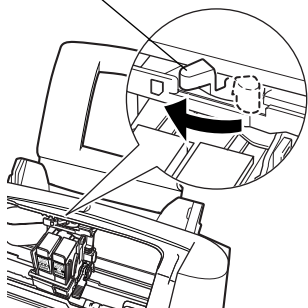
Wait until the printer stops operation.



4 Loading Paper

■ Loading A4 (Letter) Size Plain Paper

paper thickness lever



1 Open the front cover.

2 Move the paper thickness lever at the top of the cartridge holder to the left position. Close the front cover.

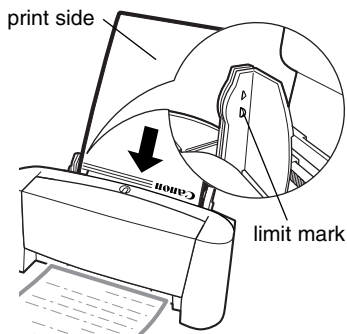
➡ **Note**

Set the paper thickness lever to the left when using plain paper, to the right when using thick paper. Refer to the User's Guide for information on loading envelopes and other media.

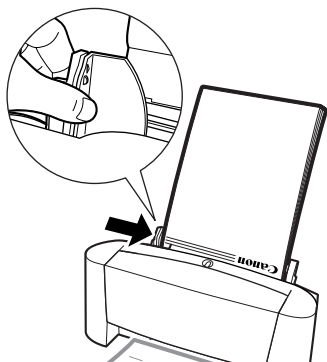
3 To avoid paper jams, fan the stack to remove static cling, then align the edges of the stack by tapping it on a flat surface.

4 Load the paper, aligning it with the right side of the sheet feeder.

You can load up to 50 sheets of plain paper. Do not exceed this limit.



5 Press the paper guide and slide it against the left side of the stack of paper.



You now need to install the printer driver:

Windows: Go to page 7

Macintosh: Go to page 9

5 ■ Installing the Printer Driver

■ Installing the Printer Driver - Windows

➡ Notes

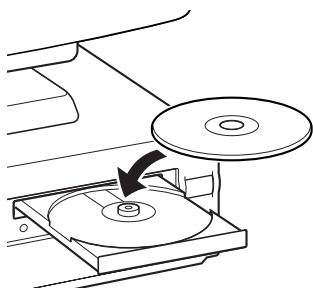
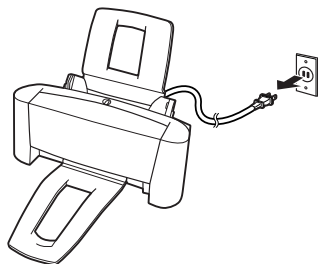
- Do not disconnect the cable or remove the CD-ROM during the installation. The driver cannot be correctly installed.
- The screens below refer to Windows Me installation. Screen may differ depending on the environment you are using.
- When installing the printer driver in Windows XP/Windows 2000, log on to the system as a member of the **Administrators** group.

If the following screen appears automatically, click **Cancel** and carry out the installation following steps 1 to 7.



Special Notes for Windows 98 USB Users

Click **Cancel** to quit the screen and turn off the printer. Next, remove and replace the USB cable connected to your computer.



1 Unplug the printer and ensure the computer is switched off.

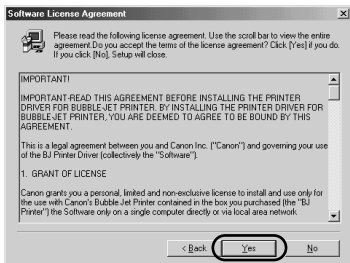
2 Turn on the computer and start Windows. If any applications automatically run, quit them.

Disable any virus detection programs.
Do NOT turn the printer on at this stage.

3 Place the Setup Software & User's Guide CD-ROM in the CD-ROM drive.

➡ Notes

- If the CD-ROM does not run automatically, double-click **My Computer** in the Windows screen, then double-click the CD-ROM icon.
- If the language selection screen appears, select a language, then click the **Next** button.



- 4** Read the displayed license agreement, then click **Yes**.



- 5** Ensure the **Printer Driver** is reversed, then click **Install**.

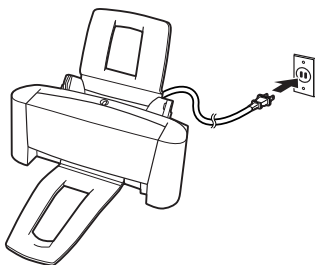


- 6** When the screen shown on the left appears, plug the printer in.

If the printer is recognised, the printer driver will be automatically installed.

➡ **Note**

If the connection is not recognised, refer to the section "Notes on Handling the USB Interface (for Windows Users)" on page 19.



- 7** Click **OK**.



- 8 When the screen shown on the left appears, click **Exit**.

➡ **Note**

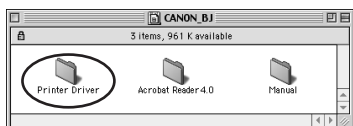
If a message prompting you to restart the computer appears, click **Yes** to restart your computer.

■ Installing the Printer Driver - Macintosh

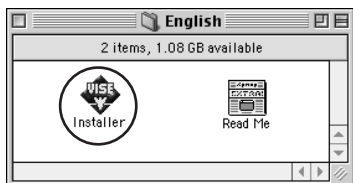
➡ **Notes**

- Do not remove or insert the USB cable during installation, as this may result in the computer or printer not operating normally.
- Before installing the driver, disable all virus detection programs and automatically loading programs or remove them from your system folder.

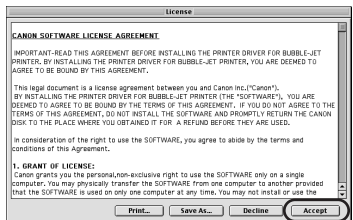
- 1 Turn on the Mac.
- 2 Place the Setup Software & User's Guide CD-ROM in the CD-ROM drive.



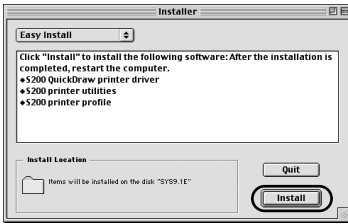
- 3 Double-click the printer driver folder, then select a language.



- 4 Double-click **Installer**.



- 5 Read the Licence Agreement and click **Accept** to continue.



6 Click **Install**.

Wait for the installation to finish.

➡ **Note**

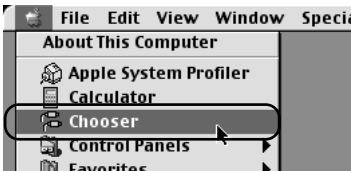


If the above message appears, check that there are no unsaved documents, then click the **Continue** button. If a document needs to be saved, click **Cancel** then save the document. After saving the document, begin again from Step 4.

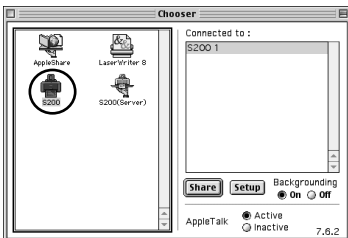


7 Click **Restart**.

The computer restarts.



8 Select **Chooser** in the Apple Menu.



9 Click the icon for the printer you are using and close **Chooser**.

Before you use the printer, you must carry out print head alignment.

➡ **Note**

Refer to the User's Guide when using this printer as a network printer.

6 ■ Printing the Nozzle Check Pattern

You have made all preparations necessary for printing. The printer is now ready to use. Next, print a trial pattern, or nozzle check pattern.

■ Printing the Nozzle Check Pattern - Windows

1 With the printer on, load a sheet of A4 or Letter paper in the printer.

2 Click **Start** and select:

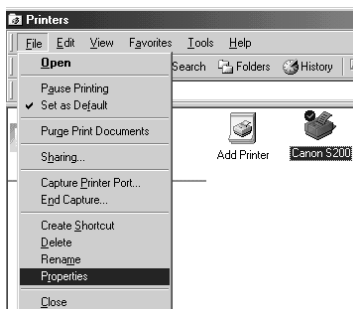
- Windows Me/Windows 2000/Windows 98 → [Printers] in Settings
- Windows XP → [Control Panel]-[Printer and Other Hardware]-[Printers and Faxes]

3 Click the icon for your printer.

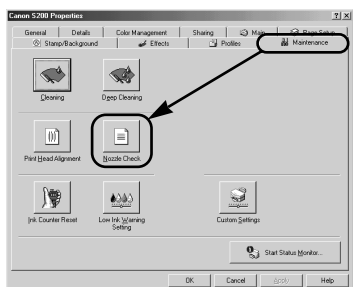
4 Open the **File** menu and select:

- Windows Me/Windows 98 → [Properties]
- Windows XP/Windows 2000 → [Printing Preferences...]

to open the **Printer Properties** dialog box.

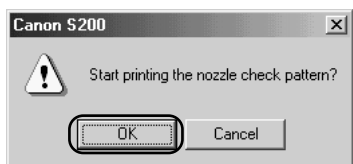


5 Click the **Maintenance** tab, and then click the **Nozzle Check** icon.

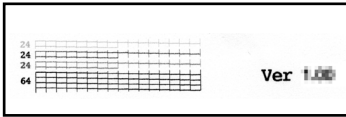


6 When the confirmation message is displayed, click **OK**.

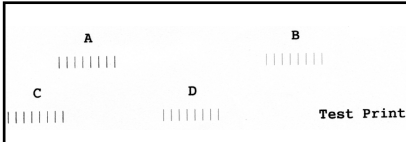
The printer starts printing a nozzle check pattern.



- 7** Examine the printed nozzle check pattern to check if all colours (yellow, magenta, cyan, and black) are printed and all lines are drawn completely.



If this pattern is not printed completely, clean the print head. Refer to Section "Examining the Nozzle Check Pattern" of the User's Guide on page 80 for how to check the printed nozzle check pattern.



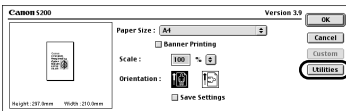
If ruled lines are horizontally misaligned, you have to adjust the print head position. Refer to Section "Aligning the Print Head" of User's Guide on page 85.

➡ **Note**

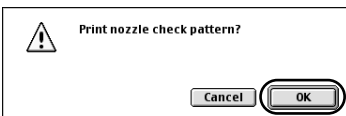
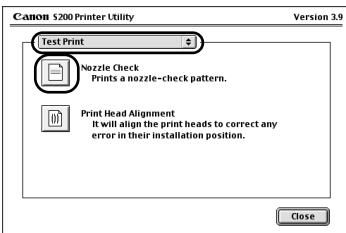
If ruled lines are printed irregularly, adjust the print head position. They will be printed correctly.

■ Print the Nozzle Check Pattern - Macintosh

- 1** With the printer on, load a sheet of A4 or Letter paper in the printer.
- 2** Select **Page Setup** in the **File** Menu.
- 3** Click **Utilities**.



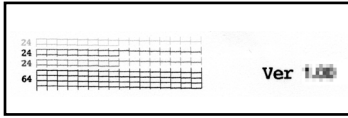
- 4** Select **Test Print** from the menu, and click the **Nozzle Check** icon.



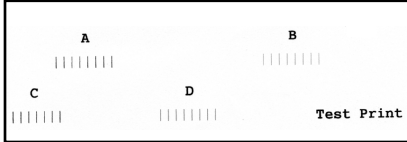
- 5** When the confirmation message is displayed, click **OK**.

The printer starts printing a nozzle check pattern.

6 Examine the printed nozzle check pattern to check if all colours (yellow, magenta, cyan, and black) are printed and all lines are drawn completely.



If this pattern is not printed completely, clean the print head. Refer to Section “Examining the Nozzle Check Pattern” of the User’s Guide on page 80 for how to check the printed nozzle check pattern.



If ruled lines are horizontally misaligned, you have to adjust the print head position. Refer to Section “Aligning the Print Head” of User’s Guide on page 86.

➡ Note

If ruled lines are printed irregularly, adjust the print head position. They will be printed correctly.

Basic Operations

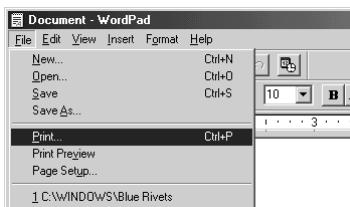
⚠ Caution

- If you detect smoke, unusual smells or strange noises around the printer, immediately unplug the printer.
- To avoid injury, never put your hand or fingers inside the printer while it is printing.

Printing with Windows

Adjusting the print settings according to your needs allows you to produce better quality prints. In this section, we will use WordPad for the purpose of explanation. The procedures you use and the screens that appear on your computer may differ according to the application that you use.

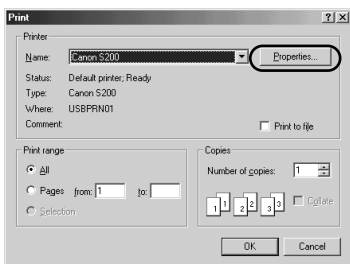
■ Printing



- 1 Print the document from the application.

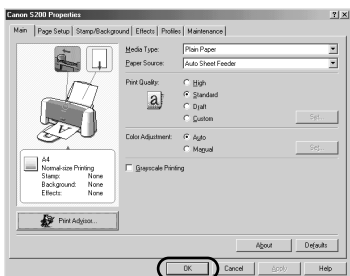
On the **File** menu, click **Print**.

Check the application's users manual for the actual procedures.



- 2 Ensure your printer is selected, then click:

- Windows Me/Windows 98 → [Properties]
- Windows XP → [Preferences]
- Windows 2000 → **Main** tab



- 3 Specify the required settings and click **OK**.

➡ Note

If you use anything other than plain paper, please refer to “Basic Print Settings” on page 15.

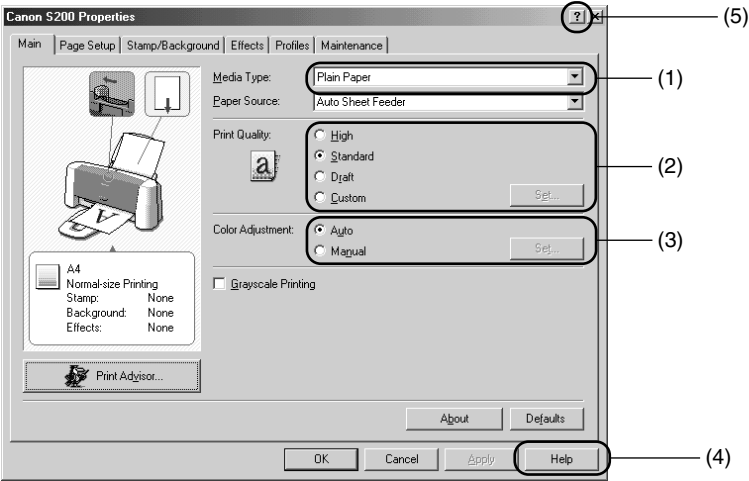
- 4 To start printing, click:

- Windows Me/Windows 98 → [OK]
- Windows XP/Windows 2000 → [Print]

Printing will start in a few moments.

Basic Print Settings

For the best print quality, specify the minimum requirement settings in the **Main** tab. To get the best results, ensure you select the type of media loaded in the printer when printing on paper other than plain paper.



(1) [Media Type]	Select the type of media loaded in the printer.
(2) [Print Quality]	Select one option from High , Standard and Draft . Select Custom to set the print quality manually.
(3) [Colour Adjustment]/ [Color Adjustment]	If you wish to control the colour adjustment settings in more detail, select Manual .
(4) [Help] button	Click this for a more detailed explanation of the functions in this settings tab. (This may not appear when using Windows 2000. If this happens, click Start then select Programs - Canon S200 - Guide).
(5) [?] button	Click this to change the cursor shape to ?. By clicking on the item's name with this ? cursor, an explanation will be displayed.

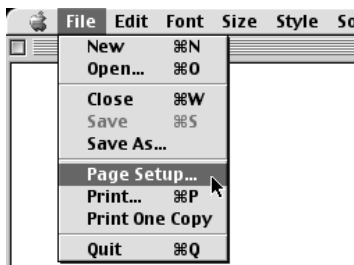
Notes

- Clicking the **Print Advisor** allows you to change to the most appropriate print settings simply by answering questions when prompted.
- Use the application to set the paper size and paper orientation. Before printing, open the settings screen and check that the **Page Size** in the **Page Setup** tab is the same as that specified within application.
- Refer to the User's Guide for more information about printer driver functionality.
- To print with good quality, we recommend that you use the printer at temperatures from 15°C to 30°C.

Printing with Macintosh

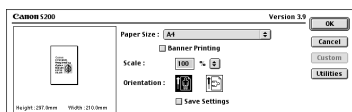
Adjusting the print settings according to your needs allows you to produce better quality prints.

■ Printing



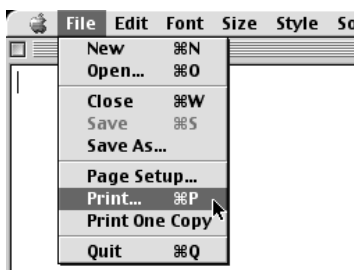
- 1 Open the **Page Setup** dialog box in your application.

On the **File** menu, click **Page Setup**. Check the application's users manual for the actual procedures.



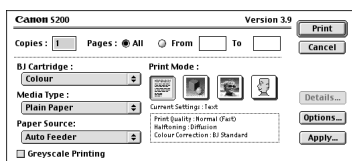
- 2 Specify the page setup.

For details, refer to "Page Setup" on page 17.



- 3 Open the **Print** dialog box in your application to print the document.

On the **File** menu, click **Print**. Check the application's users manual for the actual procedures.



- 4 Specify the print settings according to your requirements.

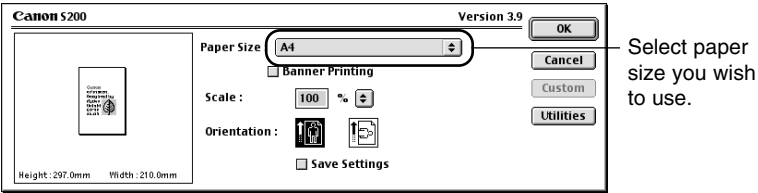
For details, refer to "Basic Print Settings" on page 17.

- 5 Click the **Print** button.

Printing will start in a few moments.

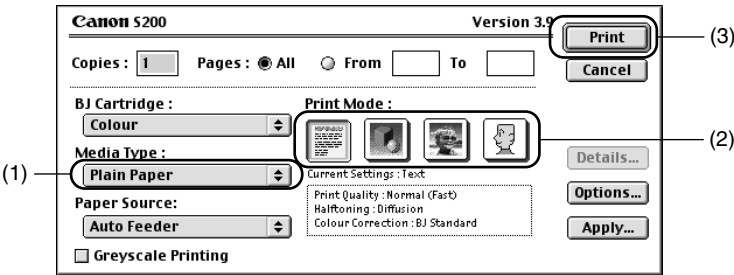
■ Page Setup


Use the **Page Setup** dialog box to specify the paper size settings.



■ Basic Print Settings

For the best print quality, specify the minimum requirement settings in the **Print** dialog box. To get the best results, ensure you select the type of media loaded in the printer when printing on paper other than plain paper.



(1) [Media Type]	Select the type of media loaded in the printer.
(2) [Print Mode]	Select the icon closest to the type of document you want to print. To specify more detailed settings for the print quality or colour, select Manual  and click Details .
(3) [Print] button	Click this to start printing.

➡ Notes

- See Balloon Help for more information about other printer driver functions. Select **Show Balloons** in the **Help** menu for an explanation of each of the items in the setting screen. To see the explanation, point to the item with the mouse.
- Refer to the User's Guide for more information about printer driver functionality.
- To print with good quality, we recommend that you use the printer at temperatures from 15°C to 30°C.

Print Head Maintenance

■ If Blurring Occurs or If a Specific Colour Does Not Print

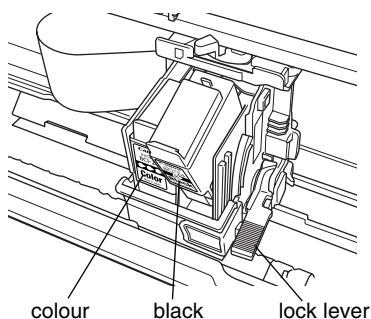
Perform print head cleaning to improve the print quality. Ensure that the printer is plugged in and follow the instructions below.

- Windows
Open the printer driver settings screen and click the **Maintenance** tab. Click the Cleaning icon. See page 11 for details on how to open the setting screen.
- Macintosh
Open the **Page Setup** dialog box and click the **Utilities** button. Click the Cleaning icon.

■ When the Printer Runs out of Ink

Replace the empty ink tank with a new one.
Specify the following ink tanks when purchasing.

Ink Tank BCI-24 Color
Ink Tank BCI-24 Black



1 Open the front cover.

The cartridge holder moves to the centre.

2 Remove the empty ink tank.

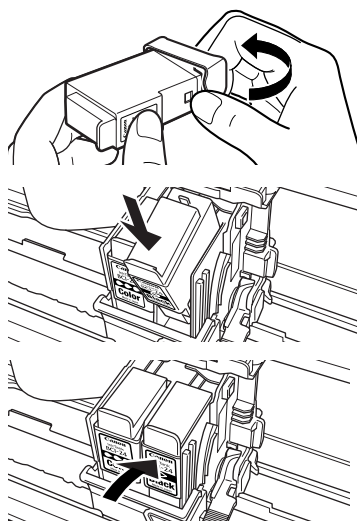
Do not touch the lock lever. You do not need to remove the print head.

3 Install the new ink tank.

Close the front cover when finished.

➡ **Note**

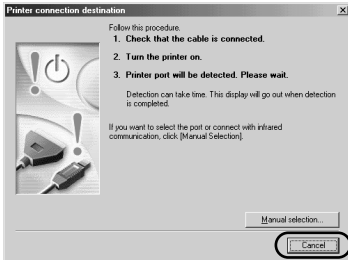
When you enable the low ink warning, reset the ink counter of the ink tank installed. Refer to the User's Guide for more detailed procedures and information about maintenance.



Notes on Handling the USB Interface (for Windows Users)

If installation of the printer driver does not proceed as instructed in this Quick Start Guide, there may be a problem with the USB driver installation.
Try reinstalling the printer driver.

■ Reinstalling



If you cannot proceed beyond the **connection destination** screen:

- 1 Click **Cancel**.
- 2 When the **Abort Installation** screen is displayed, click **Abort**.
- 3 When the **Terminate Installation** screen is displayed, click **OK**.
- 4 Unplug the printer.
- 5 Reinstall the printer driver (see page 7).

If the installation still does not proceed as instructed, check the status of the USB driver following the procedures described below.

■ Checking the USB Driver Status

- 1 Ensure the computer and printer are connected using the USB cable and that the printer is turned on.
- 2 Select **Start, Settings and Control Panel**.

In Windows XP, after clicking the **Start** button, select **Control Panel**. Select **Printers and Other Hardware**.

- 3 Double-click **System**.

If the **System** icon is not displayed for Windows Me users, click on **view all Control Panel options** on the left-hand side of the screen.

- 4 Click the **Device Manager** tab.

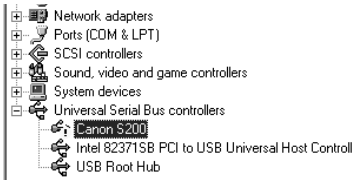
For Windows XP, click the **Hardware** tab then click **Device Manager**.

- 5 Double-click **Universal Serial Bus controllers**.
- 6 Check that **Canon S200** is displayed.

- If displayed, installation is complete.
- If displayed with an exclamation mark (!), installation was not successful. Delete and reinstall.
- If nothing is displayed or **Other Devices** is displayed instead, installation was not successful. Delete and reinstall.

Refer to the User's Guide for details on how to delete unknown devices.

If displayed with an exclamation mark (!)



If **Other Devices** is displayed



For Further Details...

For more information, place the Setup Software & User's Guide CD-ROM in the CD-ROM drive.

■ User's Guide Contents

The "User's Guide" is in PDF format and can be found on the same CD-ROM as the printer driver. You can view this Guide on screen and print out any sections you require.

Contents

- Printer parts and their functions
- Printer driver functions
- Routine maintenance
- Printing media
- Troubleshooting
- Specifications

■ How to View the User's Guide

For Windows

- (1) Load the CD-ROM in your computer.
- (2) Click **View Documentation**.
If Acrobat Reader is not installed or Acrobat Reader 4.0 is installed, a message appears. Click **Yes**. Follow the instructions on screen to install the program. The User's Guide will appear once installation is complete.

For Macintosh

- (1) Load the CD-ROM in your computer.
If Acrobat Reader 3.0 or later is not already installed, double-click the **Acrobat Reader 4.0** folder in the **CD-ROM** folder, then double-click **Reader Installer**. Follow the instructions on the screen to install Acrobat Reader.
- (2) Double-click the **Manual** folder.
- (3) Select a language folder.
- (4) Double-click the icon for the **S200_UG_UK.pdf** file.

■ BJ Printer Driver Systems Requirements

For Windows

- Windows XP, Windows Me, Windows 2000, Windows 98
- USB interface
 - * Use a computer on which Windows XP, Windows 2000, Windows Me, or Windows 98 has been preinstalled (including computers preinstalled with Windows 98, Windows Me upgraded to Windows 2000).
- 15MB of available hard-disk space for Windows 98/Windows Me
- 25MB of available hard-disk space for Windows 2000
- 16MB of available RAM for Windows 98
- 32MB of available RAM for Windows Me/Windows 2000

For Macintosh

- Macintosh series computer equipped with USB interface
- Preinstalled Mac OS 8.6 - Mac OS 9.X
- 30MB of available hard-disk space (including temporary storage space)
- 12MB of available RAM (unused block)

Additional Systems Requirements for User's Guide

To install Adobe Acrobat Reader and view the User's Guide:

- 8MB of available hard-disk space for Windows
- 13MB of available hard-disk space for Mac OS
- 640 x 480 pixels or greater, minimum 256 colours video display



- This publication uses 50% recycled paper.
- Document réalisé avec du papier recyclé à 50%.
- Diese Publikation wurde auf zu 50% wiederverwertetem Papier ausgedruckt.
- この印刷物は古紙を50%含んだ再生紙を使用しています。