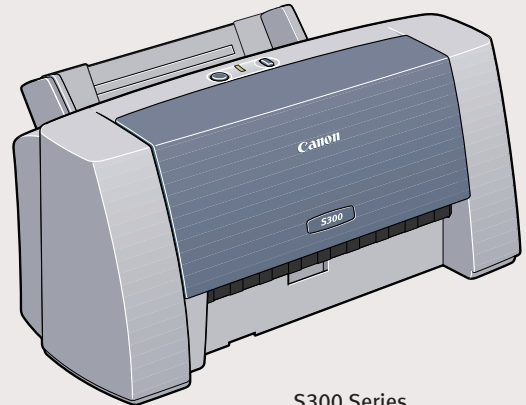
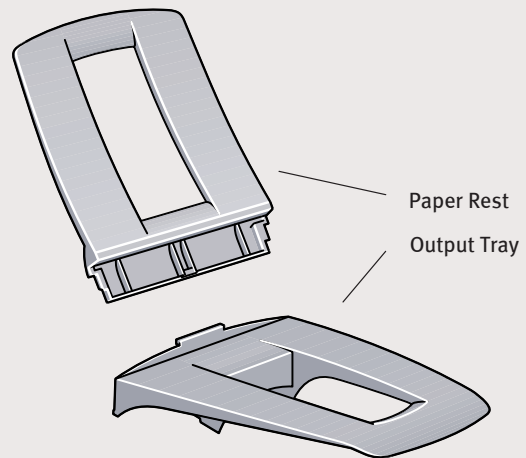


1 Unpack the Printer

- 1 Carefully remove all items from the box.



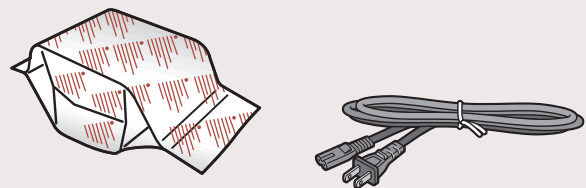
S300 Series
Color Bubble Jet Printer



Paper Rest
Output Tray

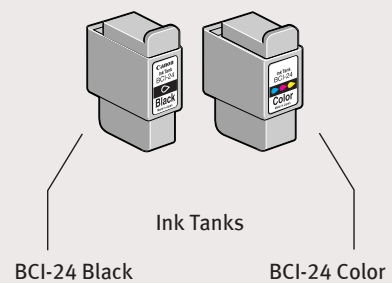


Documentation
and Software Kit



S300 BJ (Bubble Jet) Printhead

Power Cord



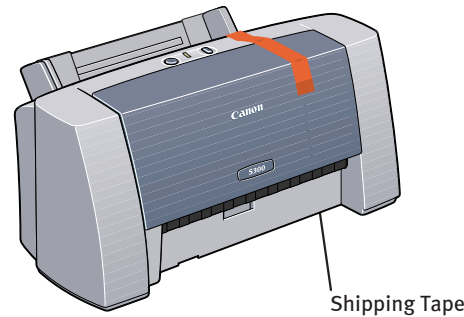
BCI-24 Black

Ink Tanks

BCI-24 Color

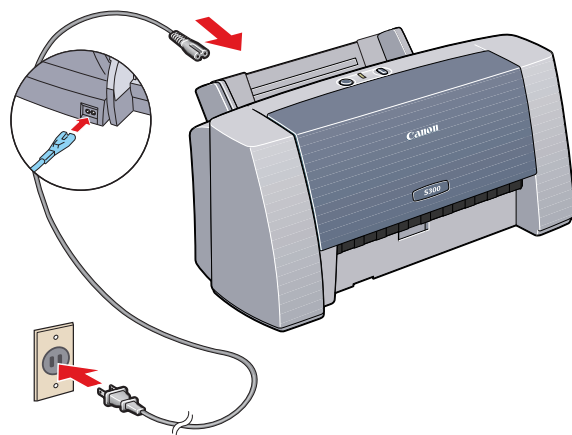
2 Prepare the Printer

- 1 Remove the shipping tape from the front and sides of the printer.

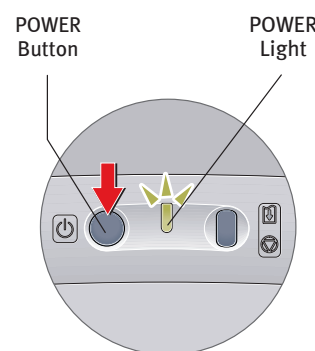


Shipping Tape

- 2 Plug the power cord into the back of the printer and connect the other end to a power outlet.



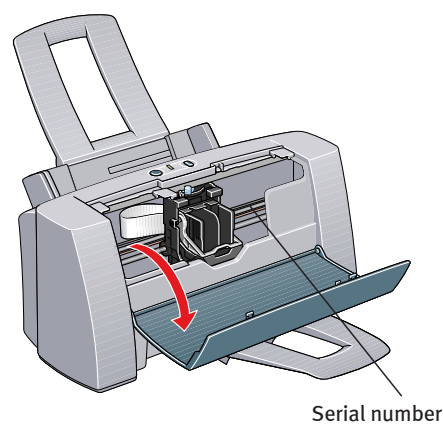
- 3 Press the POWER button.



POWER
Button

POWER
Light

- 4 Open the front cover. The printhead holder automatically moves to the center.

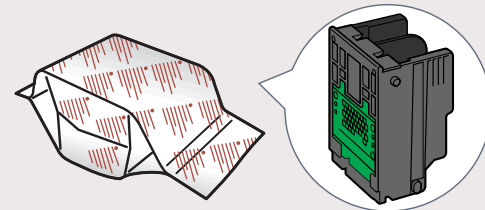


Serial number

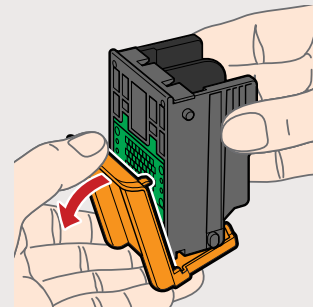
- 5 Write down the serial number located to the right of the printhead. You will need this later to register the product.

3 Install the Printhead

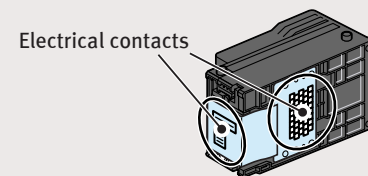
- 1 Remove the printhead from its package.



- 2 Turn the printhead over, then remove the orange protective cap.

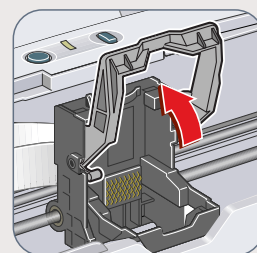


NOTE: Do not touch the electrical contacts.

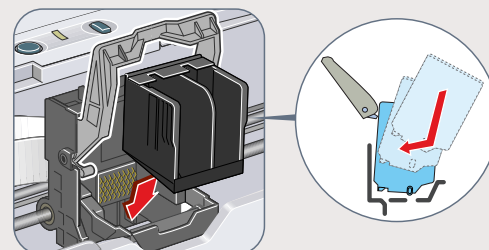


Electrical contacts

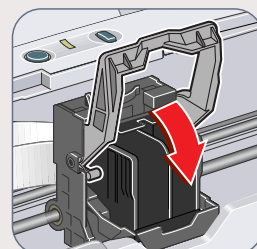
- 3 Raise the gray lock lever.



- 4 Gently slide the printhead into the holder until it is securely seated. Do not press it down.

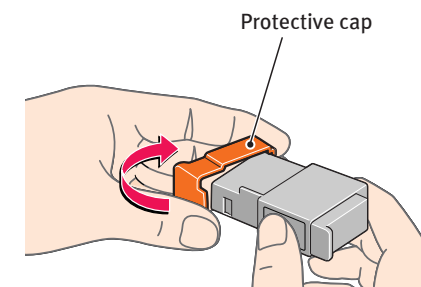


- 5 Lower the lock lever until it locks into place.



4 Install the Ink Tanks

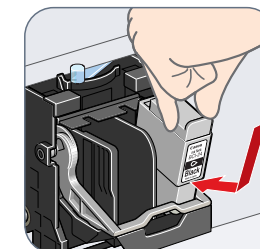
- 1 Remove the black ink tank (BCI-24 Black) from its packaging and pull off the orange protective cap.



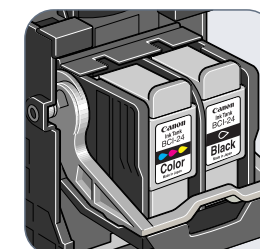
Protective cap

NOTE: To avoid spilling ink, do not touch the bottom of the tank once you have removed the protective cap.

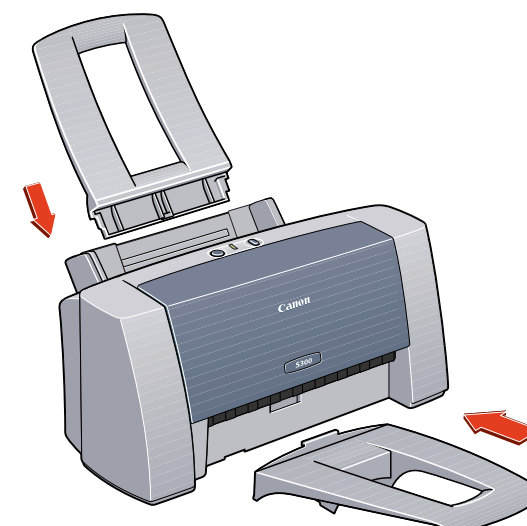
- 2 Insert the black ink tank into the slot on the right. Press down gently until the ink tank locks into place.



- 3 Repeat the procedure for the color ink tank (BCI-24 Color), inserting it into the remaining slot.



- 4 Close the front cover and attach the paper rest and output tray.

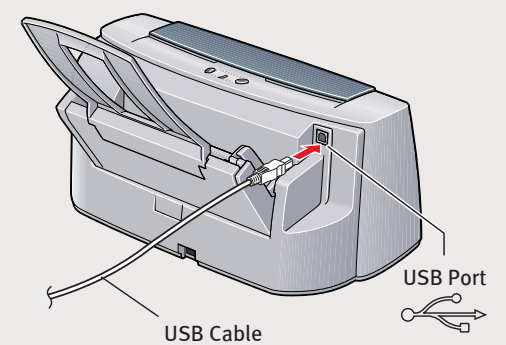
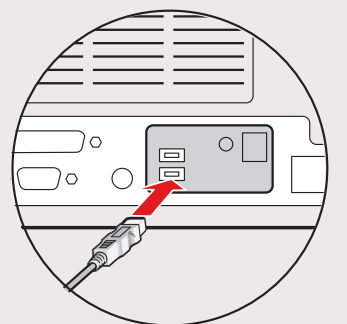


5 Connect the Printer To Your Computer

- 1 Turn the printer off.

IMPORTANT: Be sure printer is off before continuing, or the computer will attempt to install the printer driver before the printer is ready.

- 2 Connect one end of a USB cable (not included) to the computer, the other to the printer.



USB Cable

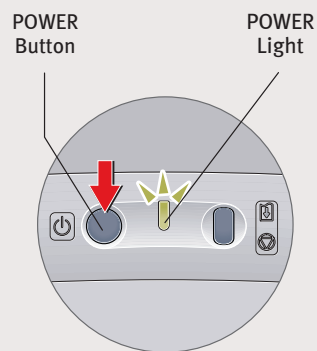
USB Port

Continue with Step 6
on side two.



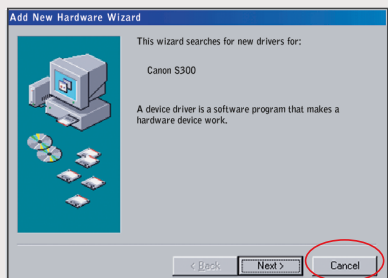
6 Install the Printer Driver (Windows®)

- 1 Be sure the printer is off before continuing.



NOTE: For Windows 2000, log on to Windows as an Administrator before continuing.

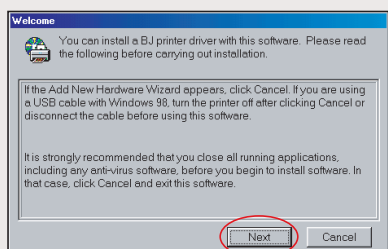
IMPORTANT: If you see this screen, click **Cancel** and continue.



- 2 Close any open software applications, then insert the S300 Setup Software & User's Guide CD-ROM. The setup program should run automatically.

NOTE: If the setup program does not run, click **Start**, then **Run**, then type **x:\msetup.exe**, where **x** is your CD-ROM drive.

- 3 Read the Welcome screen, then click **Next**.



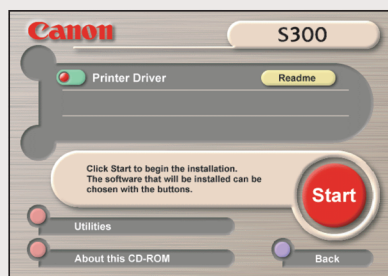
- 4 Read the License Agreement, then click **Yes**.

- 5 When the main menu appears, click **Install Software**.

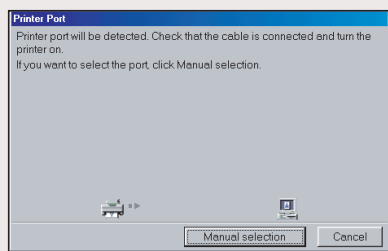


NOTE: If you are prompted to restart Windows, remove the CD-ROM, then click **OK**. After the computer restarts, insert the CD-ROM and continue.

- 6 Click **Start**. (If the Printer Driver button is not red, select **Printer Driver**, then click **Start**.) The printer driver will start loading automatically.



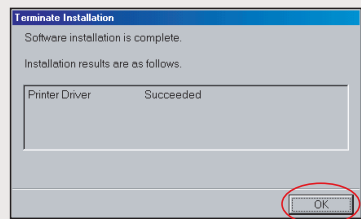
- 7 When the Printer Port window appears, TURN THE PRINTER ON so the printer port (connection) can be automatically detected.



The software will begin identifying the printer port being used.

IMPORTANT: If your computer cannot detect a printer port, refer to the Troubleshooting chapter in the *S300 Quick Start Guide* for instructions.

- 8 When the Terminate Installation window appears, click **OK**.



- 9 If you are prompted to restart the computer, click **Yes**. When the installation and registration process has completed, click **Exit**.

NOTE: Remember to register your product to ensure product support. The serial number is located on the inside of the printer, to the right of the printhead.

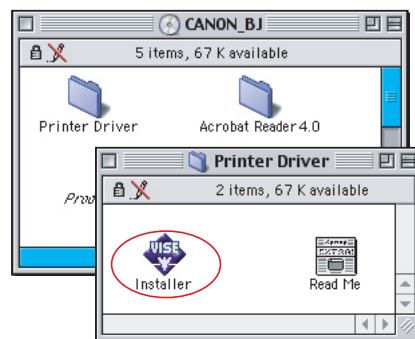
NOTE: You can now install the BJ Solution software.

- 10 You will need to align the printhead before printing. Continue with step 7 **Align the Printhead**.

6 Install the Printer Driver (Macintosh®)

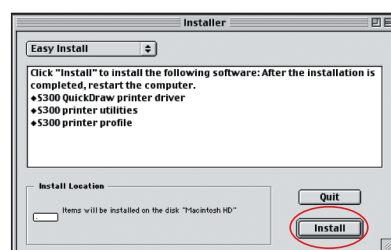
- 1 Insert the S300 Setup Software & User's Guide CD-ROM.

- 2 Open the printer driver folder on the CD-ROM, then double-click the **Installer** icon.

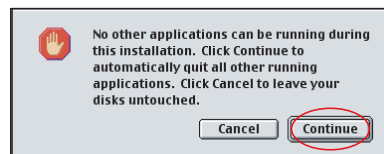


- 3 Read the License Agreement, then click **Accept**.

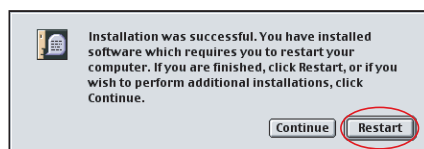
- 4 Click **Install**. The printer driver will load automatically.



- 5 If the message "No other applications can be running..." displays, click **Continue**.



- 6 When the installation and registration process has completed, TURN THE PRINTER ON, then click **Restart**.



NOTE: Remember to register your product to ensure product support. The serial number is located on the inside of the printer, to the right of the printhead.

7 Align the Printhead

- 1 Place a stack of blank paper in the paper rest.

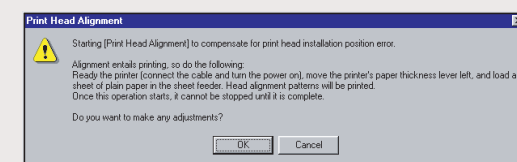
- 2 Start the alignment procedure.

Windows:

- a. Click **Start**, then **Settings**, then **Printers**.

- b. Right-click the **Canon S300** icon, then click **Properties**.

- c. Click the **Maintenance** tab, then click the **Print Head Alignment** icon.



- d. When asked to start printhead alignment, click **OK**.

- e. Follow the on-screen instructions to complete printhead alignment.

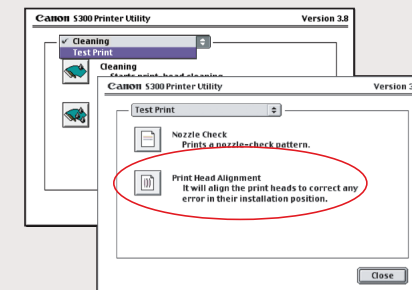
Macintosh:

- a. From the **File** menu in a software application, click **Page Setup**.

- b. Click the **Utilities** button.

- c. Click the down-arrow to select **Test Print**.

- d. Click the **Print Head Alignment** icon.



- e. Follow the on-screen instructions to complete printhead alignment.

- 3 Click **OK** (Windows) or **Close** (Macintosh) when finished.