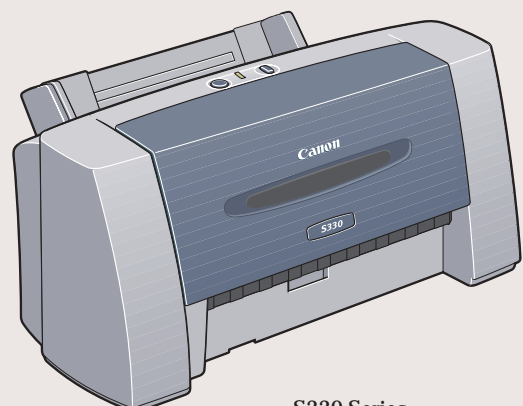
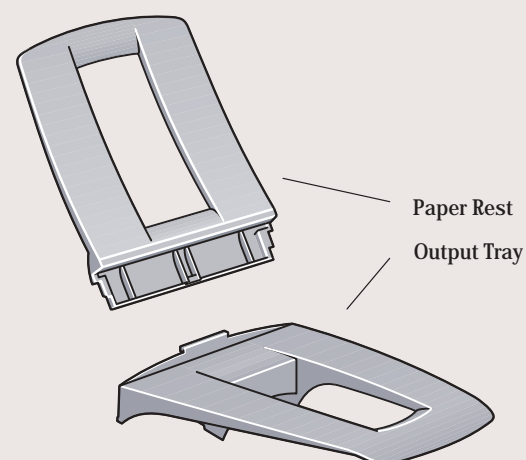


### 1 Unpack the Printer

- 1 Carefully remove all items from the box.



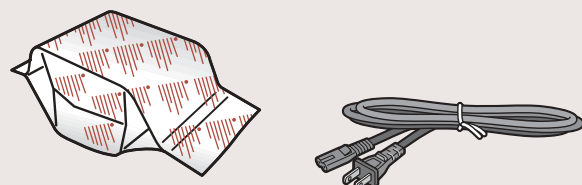
S330 Series  
Color Bubble Jet Printer



Paper Rest  
Output Tray

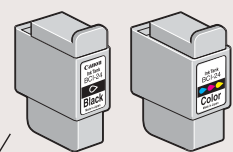


Documentation  
and Software Kit



S330 Print Head

Power Cord



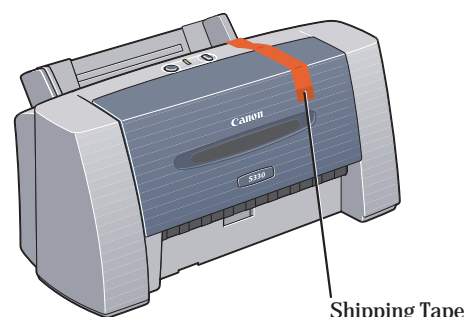
Ink Tanks

BCI-24 Black

BCI-24 Color

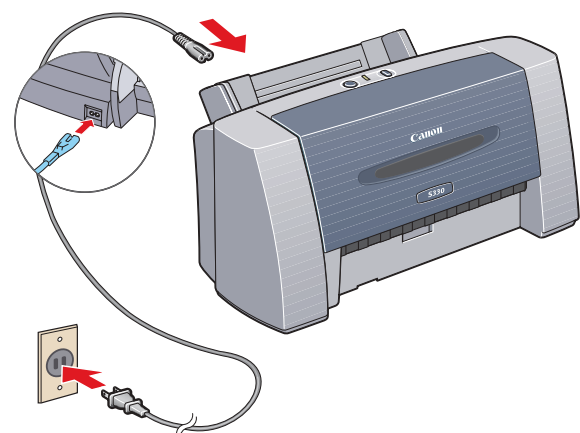
### 2 Prepare the Printer

- 1 Remove the shipping tape from the front and sides of the printer.

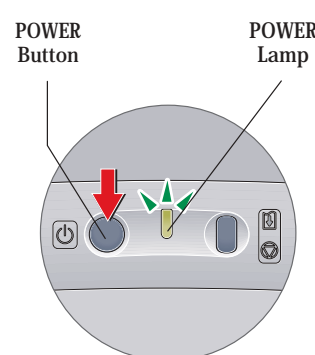


Shipping Tape

- 2 Plug the power cord into the back of the printer and connect the other end to a power outlet.



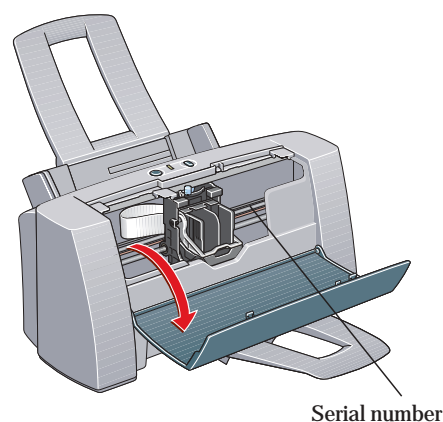
- 3 Press the POWER button.



POWER  
Button

POWER  
Lamp

- 4 Open the front cover. The print head holder automatically moves to the center.

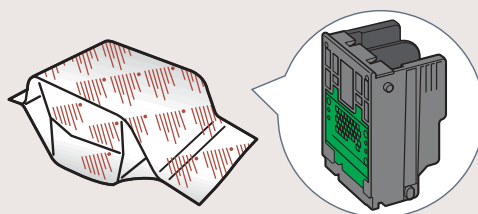


Serial number

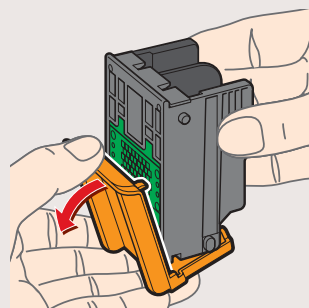
- 5 Write down the serial number located to the right of the print head. You will need this later to register the product.

### 3 Install the Print Head

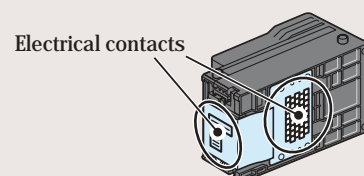
- 1 Remove the print head from its package.



- 2 Turn the print head over, then remove the orange protective cap.

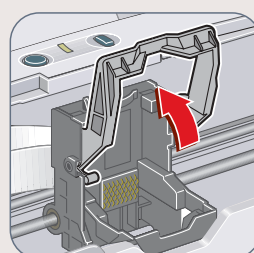


**NOTE:** Do not touch the electrical contacts.

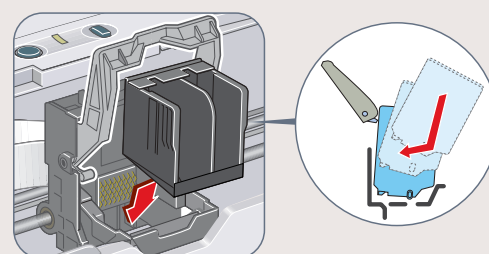


Electrical contacts

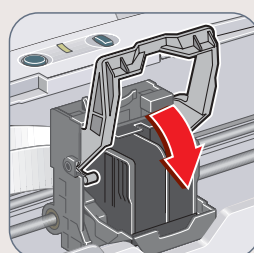
- 3 Raise the gray lock lever.



- 4 Slide the print head into the holder until it is securely seated. Do not press it down.

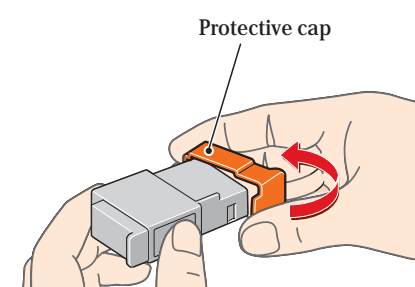


- 5 Lower the lever until it locks into place.



### 4 Install the Ink Tanks

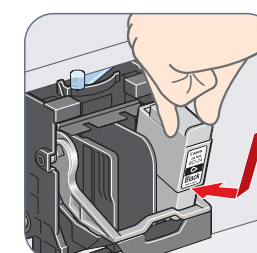
- 1 Remove the black ink tank (BCI-24 Black) from its packaging and pull off the orange protective cap.



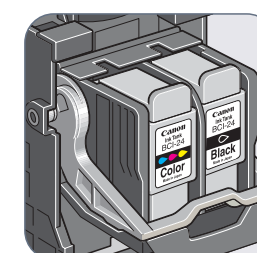
Protective cap

**NOTE:** To avoid spilling ink, do not touch the bottom of the tank once you have removed the protective cap.

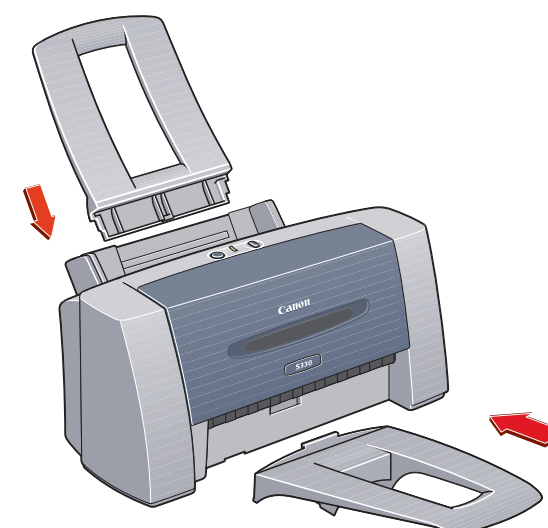
- 2 Insert the black ink tank into the slot on the right. Press down until the ink tank locks into place.



- 3 Repeat the procedure for the color ink tank (BCI-24 Color), inserting it into the remaining slot.



- 4 Close the front cover and attach the paper rest and output tray.

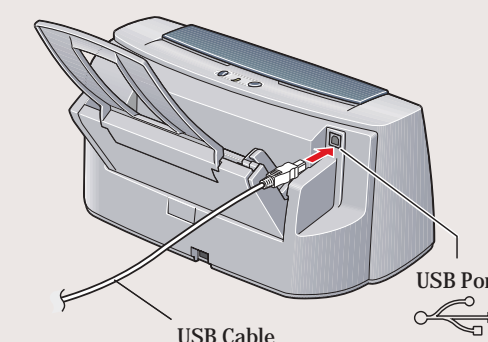
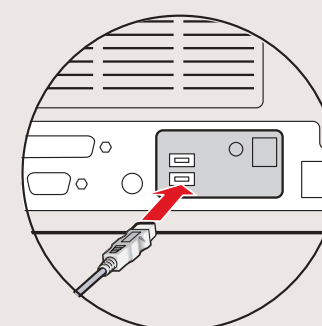


### 5 Connect the Printer To Your Computer

- 1 Turn the printer off.

**! IMPORTANT:** Be sure printer is off before continuing, or the computer will attempt to install the printer driver before the printer is ready.

- 2 Connect one end of a USB cable (not included) to the computer, the other to the printer.



USB Cable

USB Port

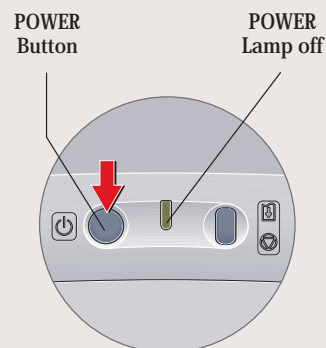
Continue with Step 6 on side two.



## 6 Install the Printer Driver (Windows®)

Windows

- 1 Be sure to TURN THE PRINTER OFF.



NOTE: For Windows® XP or Windows 2000, log on to Windows as an Administrator before continuing.

IMPORTANT: If you see the Add New Hardware Wizard, click Cancel.



- 2 Close any open software applications, then insert the S330 Setup Software & User's Guide CD-ROM. The setup program should run automatically.

NOTE: If the setup program does not run, click Start, then Run, then type D:\msetup.exe, where D is your CD-ROM drive.

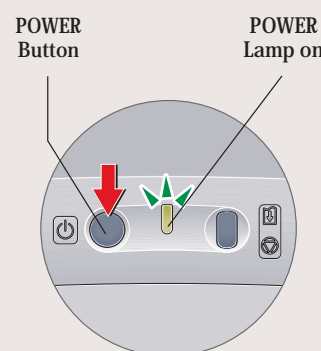
- 3 Read the License Agreement, then click Yes to continue.

- 4 When the main menu appears, click Install.



NOTE: If you are prompted to restart Windows, remove the CD-ROM, then click OK. After the computer restarts, insert the CD-ROM and continue.

- 5 TURN THE PRINTER ON so the printer port (connection) can be automatically detected.



IMPORTANT: If your computer can not detect a printer port, refer to the Troubleshooting chapter in the S330 Quick Start Guide for instructions.

- 6 When the Terminate Installation window appears, click OK.

NOTE: Remember to register your product to ensure product support. The serial number is located on the inside of the printer, to the right of the print head.

- 7 When the software screen appears, click Install.



- 8 When the Terminate Installation window appears, click OK, then Exit.

NOTE: For more information, refer to the S330 Quick Start Guide or view the Photo Application Guide on the "S330 Setup Software & User's Guide" CD-ROM.

- 9 To insure highest quality output, continue with Step 7 Align the Print Head.

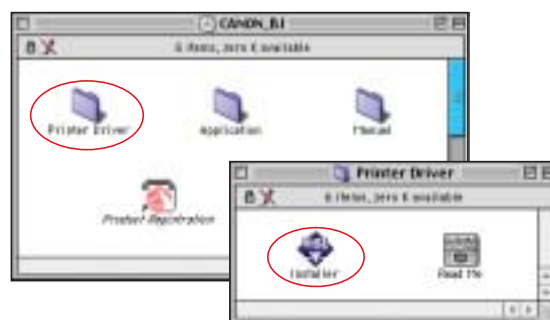
## 6 Install the Printer Driver (Macintosh®)

Macintosh

- 1 Insert the S330 Setup Software & User's Guide CD-ROM.

NOTE: Screen shots may differ depending on the operating system used.

- 2 Open the printer driver folder on the CD-ROM, then double-click the Installer icon.



- 3 Read the License Agreement, click Accept to continue.

- 4 Click Install. The printer driver will load automatically.



- 5 If the message "No other applications can be running..." displays, click Continue.



- 6 When the "Installation was successful" screen displays, Restart your computer.



NOTE: Register your product to ensure product support. From the CANON\_BJ window, double-click the Product Registration icon, then follow the on-screen instructions.

## 7 Align the Print Head

- 1 Place a stack of blank paper in the paper rest.

- 2 Start the alignment procedure.

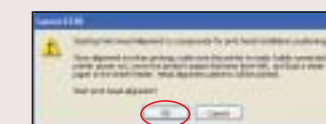
Windows:

- a. For Windows XP select Start, Settings, then Control Panel, then click on Printers and Other Hardware, then Printers and Faxes.

- b. Right-click the Canon S330 icon, then click Printing Preferences.

- c. Click the Maintenance tab, then click the Print Head Alignment icon.

- d. When asked to start print head alignment, click OK.



- e. Follow the on-screen instructions to complete print head alignment.

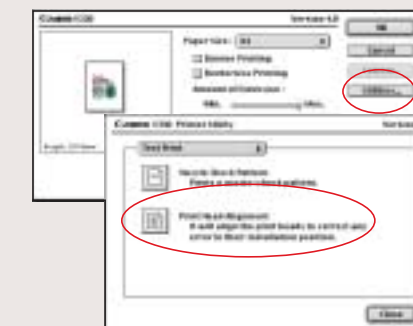
Macintosh:

- a. From the File menu in a software application, click Page Setup.

- b. Click the Utilities button.

- c. Click the down-arrow to select Test Print.

- d. Click the Print Head Alignment icon.



- e. Follow the on-screen instructions to complete print head alignment.

- 3 Click OK (Windows) or Close then OK (Macintosh) when finished.