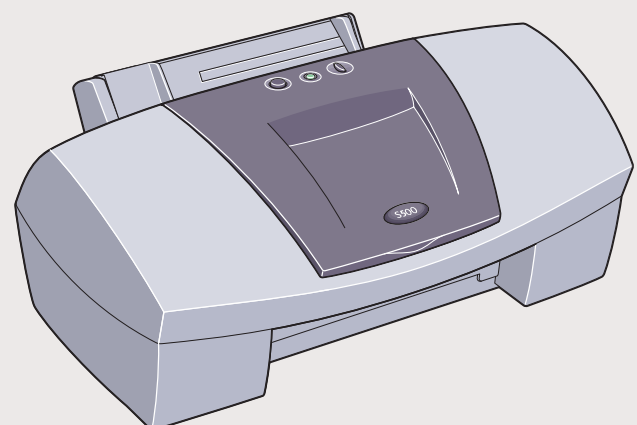
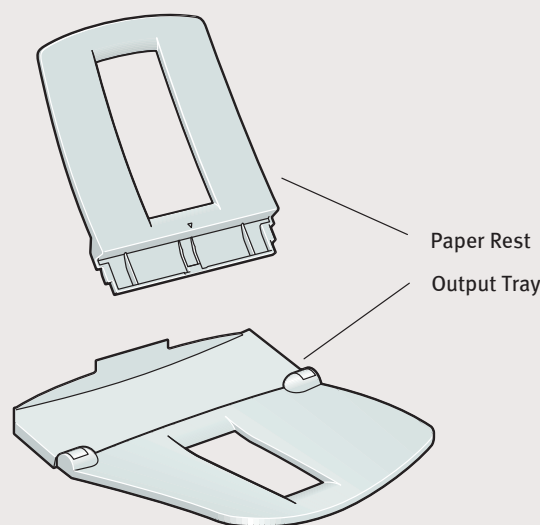


1 Unpack the Printer

- Carefully remove all items from the box.



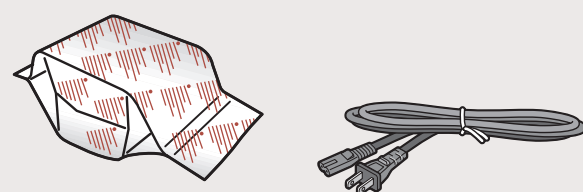
S500 Series
Color Bubble Jet Printer



Paper Rest
Output Tray

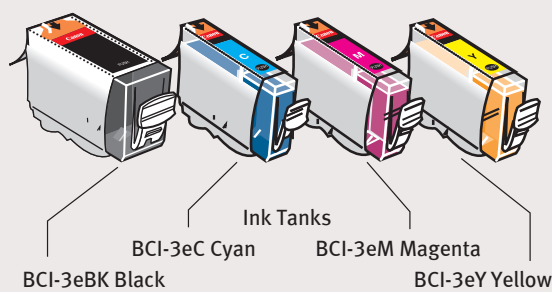


Documentation
and Software Kit



S500 BJ (Bubble Jet) Printhead

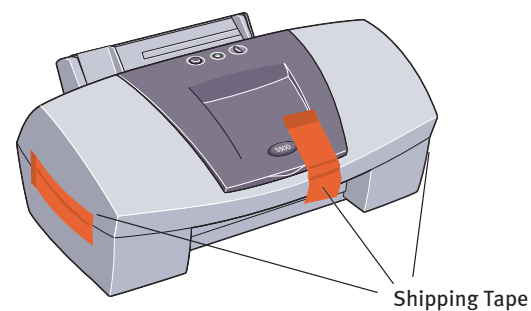
Power Cord



BCI-3eBK Black BCI-3eC Cyan BCI-3eM Magenta BCI-3eY Yellow

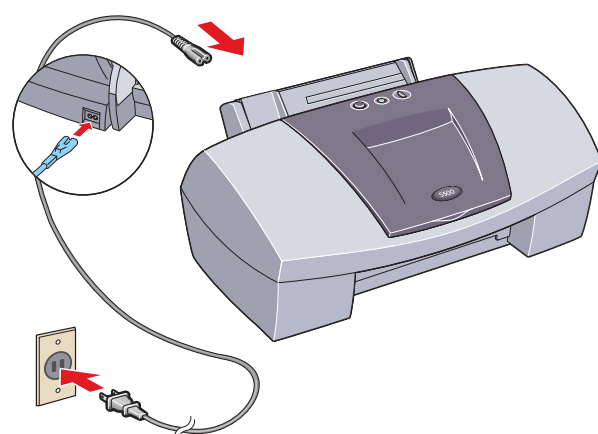
2 Prepare the Printer

- Remove the orange shipping tape from the front and sides of the printer.

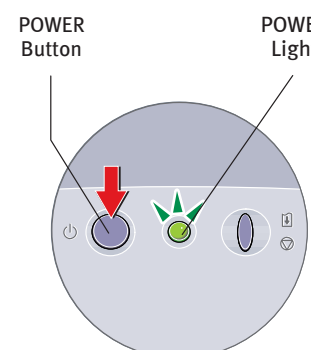


Shipping Tape

- Plug the power cord into the back of the printer and connect the other end to a power outlet.



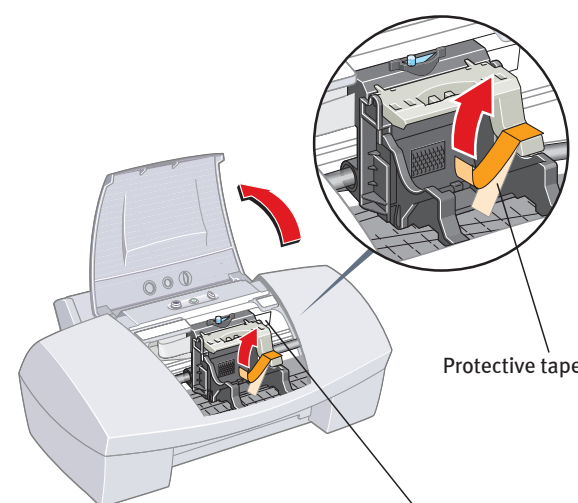
- Press the POWER button.



POWER
Button

POWER
Light

- Open the front cover. The printhead holder automatically moves to the center. Remove the protective orange tape.



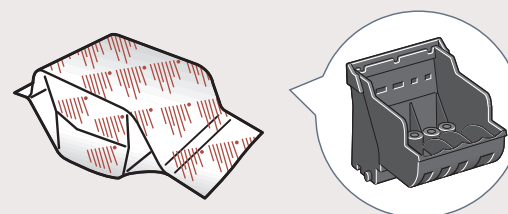
Protective tape

Serial number

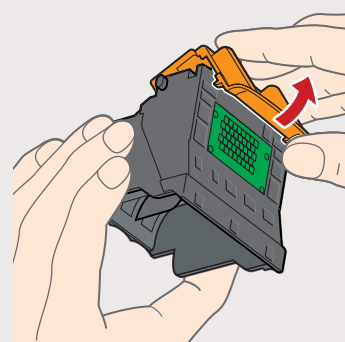
- Write down the serial number located to the right of the printhead. You will need this later to register the product.

3 Install the Printhead

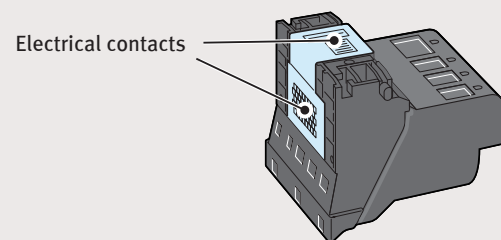
- Remove the printhead from its package.



- Turn the printhead over, then remove the orange protective cap.

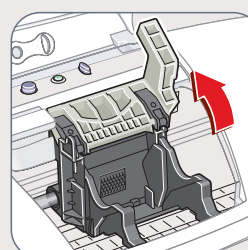


NOTE: Do not touch the electrical contacts.

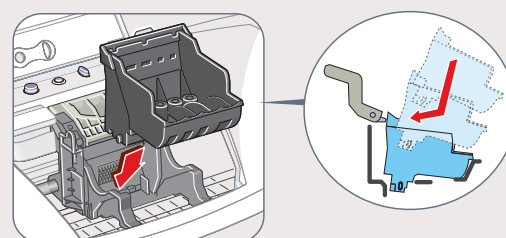


Electrical contacts

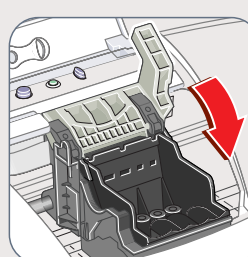
- Raise the gray lock lever.



- Gently slide the printhead into the holder. The printhead will rest at a slight angle. Do not press it down.

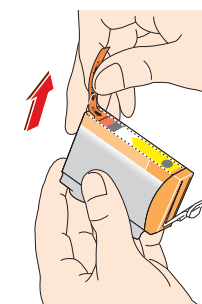


- Lower the lock lever and gently press it down until it locks into place.

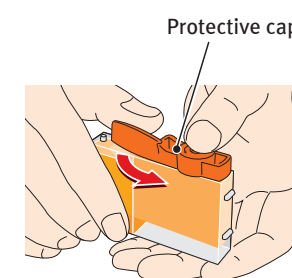


4 Install the Ink Tanks

- Pull the orange tab off the yellow ink tank (BCI-3eY), then remove and discard the plastic wrapper.



- Twist off and discard the orange protective cap.

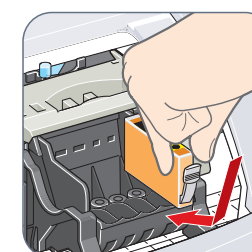


Protective cap

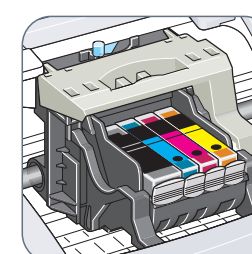
NOTE: To avoid spilling ink, never press on the sides of an ink tank.

- Insert the ink tank into the correct slot. (Refer to the color guide on the printhead.)

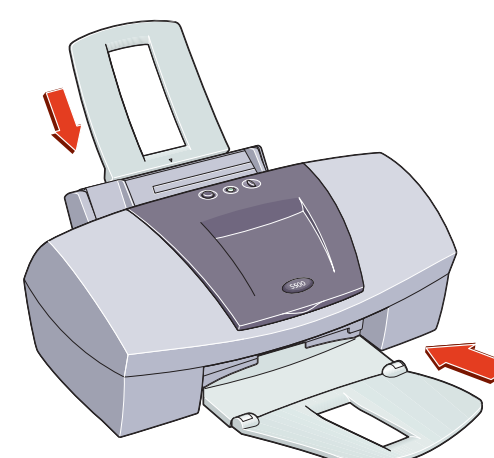
Press down gently until the ink tank locks into place.



- Insert the remaining three ink tanks into their assigned slots.



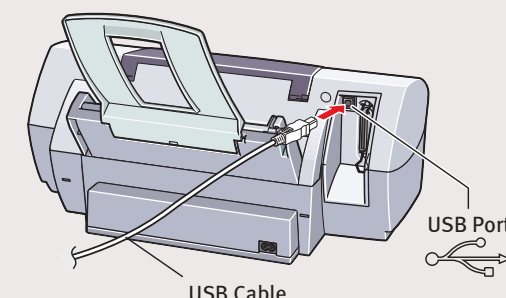
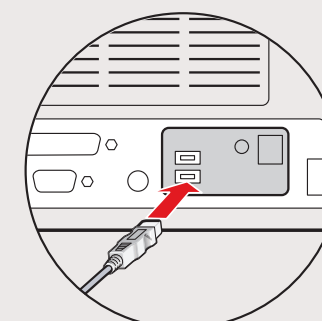
- Close the front cover and attach the paper rest and output tray.



5 Connect the Printer To Your Computer

For USB Cables:

- Turn the printer off.
- Connect one end of the USB cable to the computer, the other to the printer.



USB Cable

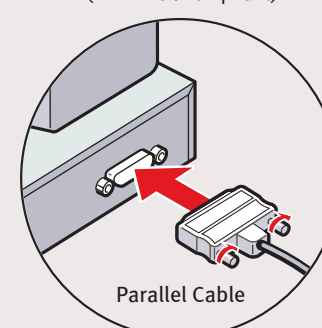
USB Port

For Parallel Cables:

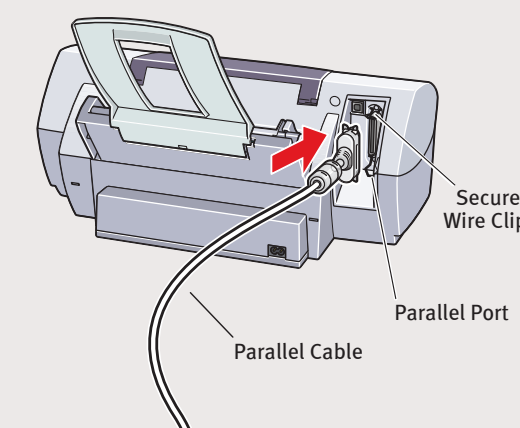
- Turn the printer off.
- Connect one end of the parallel cable to the computer, the other to the printer.

IMPORTANT: Be sure printer is off before continuing, or the computer will attempt to install the printer driver before the printer is ready.

(IEEE 1284 compliant)



Parallel Cable



Secure
Wire Clips

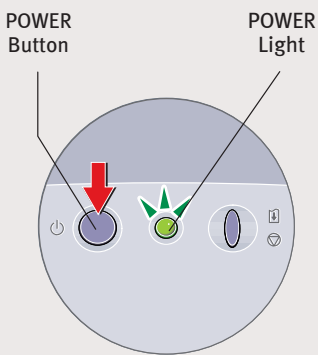
Parallel Port

Continue with Step 6
on side two.



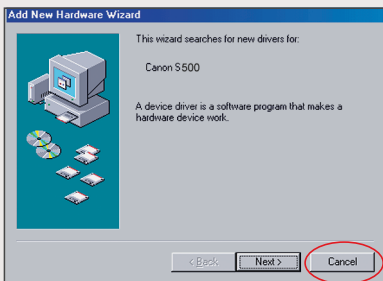
6 Install the Printer Driver (Windows®)

- 1 Be sure the printer is off before continuing.



NOTE: For Windows 2000 or Windows NT 4.0, log on to Windows as an Administrator before continuing.

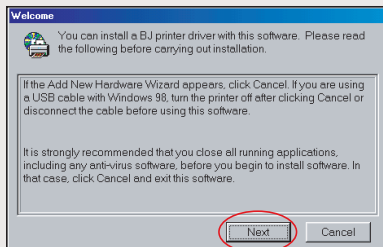
IMPORTANT: If you see this screen, click **Cancel** and continue.



- 2 Close any open software applications, then insert the S500 Setup Software & User's Guide CD-ROM. The setup program should run automatically.

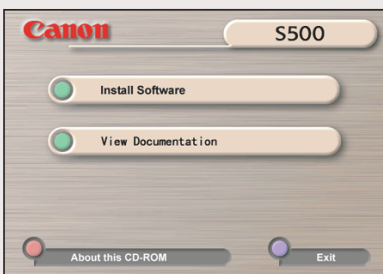
NOTE: If the setup program does not run, click **Start**, then **Run**, then type **x:\msetup.exe**, where **x** is your CD-ROM drive.

- 3 Read the Welcome screen, then click **Next**.



- 4 Read the License Agreement, then click **Yes**.

- 5 When the main menu appears, click **Install Software**.

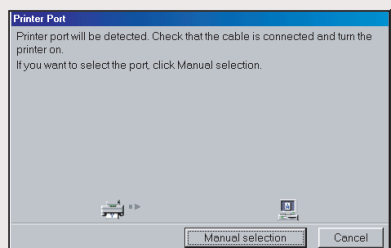


NOTE: If you are prompted to restart Windows, remove the CD-ROM, then click **OK**. After the computer restarts, insert the CD-ROM and continue.

- 6 Click **Start**. (If the Printer Driver button is not red, select **Printer Driver**, then click **Start**.) The printer driver will start loading automatically.



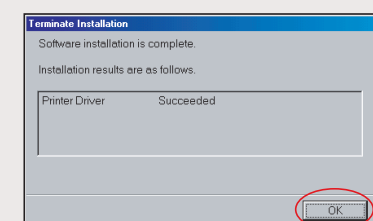
- 7 When the Printer Port window appears, turn the printer on so the printer port (connection) can be automatically detected.



The software will begin identifying the printer port being used.

IMPORTANT: If your computer cannot detect a printer port, refer to the Troubleshooting chapter in the *S500 Quick Start Guide* for instructions.

- 8 When the Terminate Installation window appears, click **OK**.



- 9 If you are prompted to restart the computer, click **Yes**. When the installation and registration process has completed, click **Exit**.

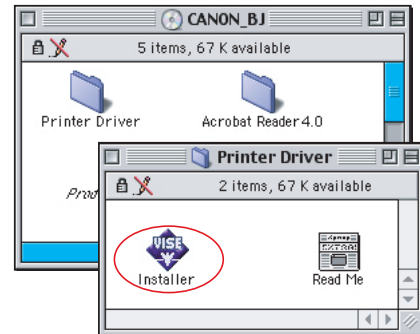
NOTE: Remember to register your product to ensure product support. The serial number is located on the inside of the printer, to the right of the printhead.

- 10 Continue with step 7 **Align the Printhead**.

6 Install the Printer Driver (Macintosh®)

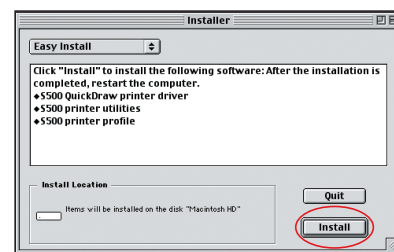
- 1 Insert the S500 Setup Software & User's Guide CD-ROM.

- 2 Open the printer driver folder on the CD-ROM, then double-click the **Installer** icon.

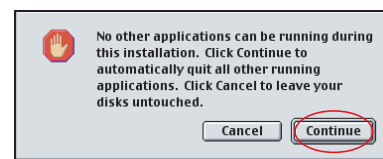


- 3 Read the License Agreement, then click **Accept**.

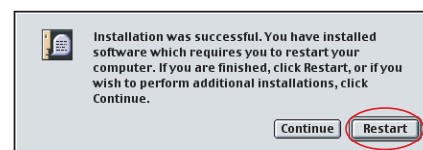
- 4 Click **Install**. The printer driver will load automatically.



- 5 If the message "No other applications can be running..." displays, click **Continue**.



- 6 When the installation and registration process has completed, **TURN ON THE PRINTER**, then click **Restart**.



NOTE: Remember to register your product to ensure product support. The serial number is located on the inside of the printer, to the right of the printhead.

7 Align the Printhead

Before using the printer, align the printhead to ensure the best quality printing.

- 1 Place a sheet of blank paper in the paper rest.
- 2 Start the alignment procedure.

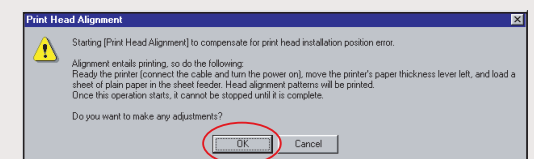
Windows:

a. Click **Start**, then **Settings**, then **Printers**.

b. Right-click the **Canon S500** icon, then click **Properties**.

c. Click the **Maintenance** tab, then click the **Print Head Alignment** icon.

d. When asked to start printhead alignment, click **OK**.



e. Follow the on-screen instructions to complete printhead alignment.

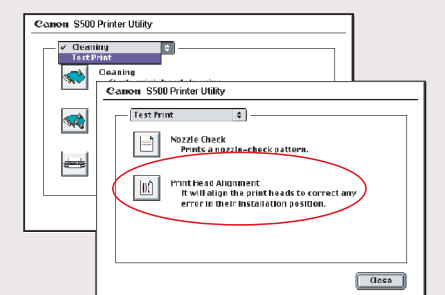
Macintosh:

a. From the **File** menu in a software application, click **Page Setup**.

b. Click the **Utilities** button.

c. Click the down-arrow to select **Test Print**.

d. Click the **Print Head Alignment** icon.



e. Follow the on-screen instructions to complete printhead alignment.

- 3 Click **OK** (Windows) or **Close** (Macintosh) when finished.

NOTE: You can now install the BJ Solution software. Insert the BJ Solution CD-ROM. The setup program should start automatically. Follow the on-screen instructions.