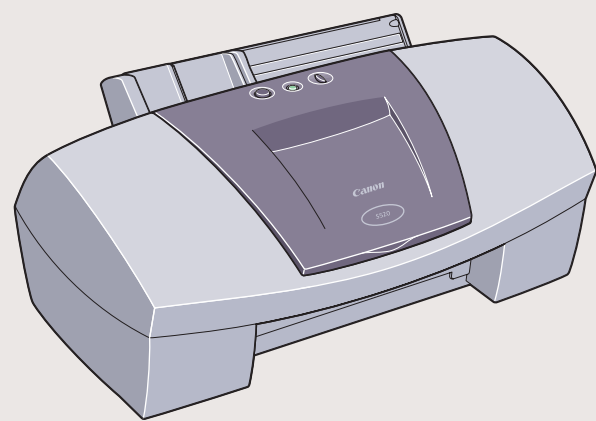
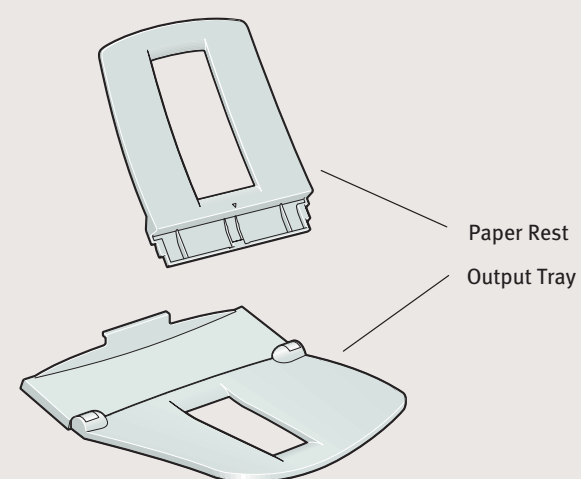


### 1 Unpack the Printer

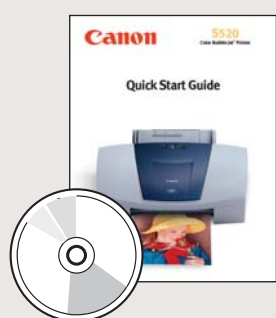
- 1 Carefully remove all items from the box.



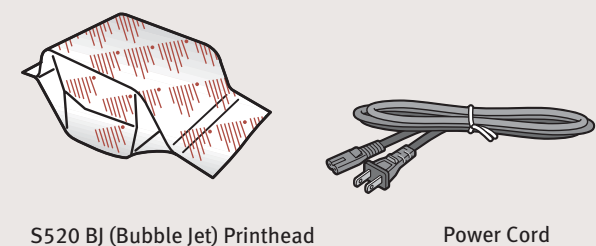
S520 Series  
Color Bubble Jet Printer



Paper Rest  
Output Tray

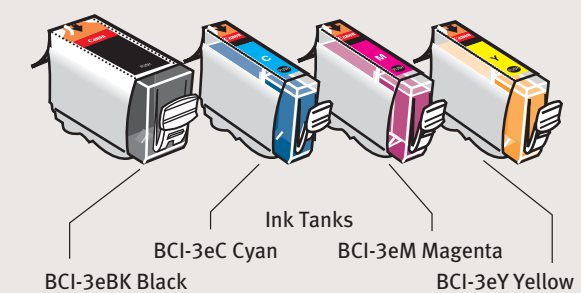


Documentation  
and Software Kit



S520 BJ (Bubble Jet) Printhead

Power Cord



Ink Tanks

BCI-3eC Cyan

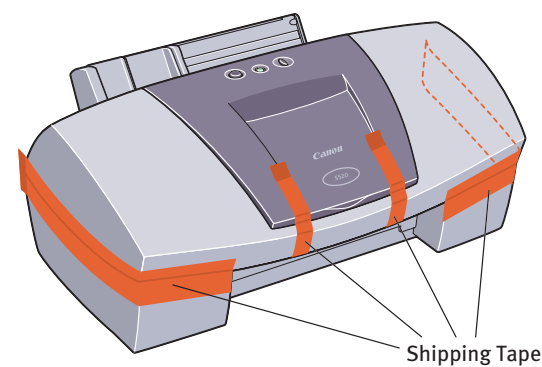
BCI-3eM Magenta

BCI-3eBK Black

BCI-3eY Yellow

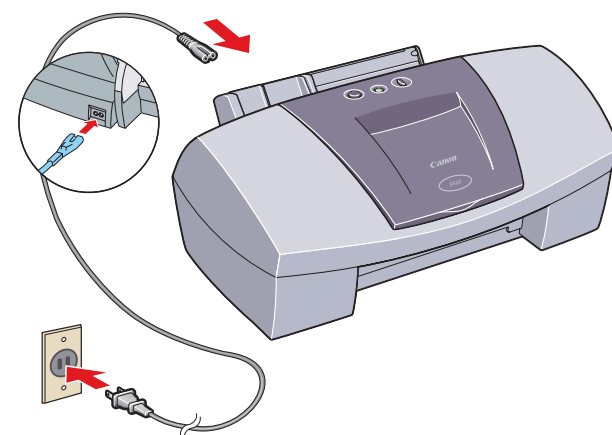
### 2 Prepare the Printer

- 1 Remove the shipping tape from the front and sides of the printer.

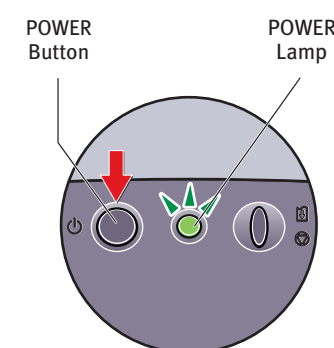


Shipping Tape

- 2 Plug the power cord into the back of the printer and connect the other end to a power outlet.



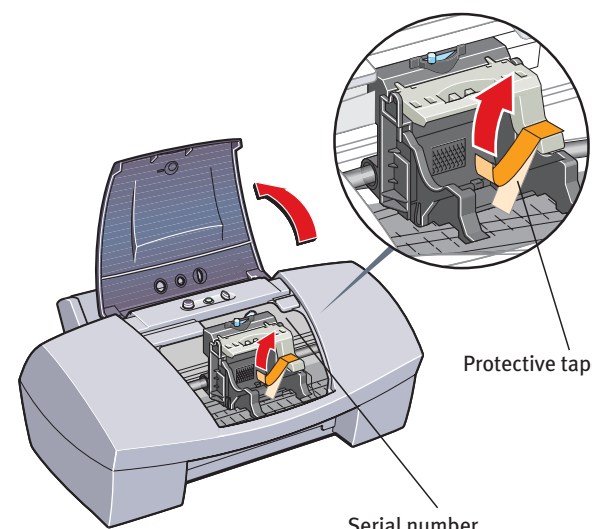
- 3 Press the POWER button.



POWER  
Button

POWER  
Lamp

- 4 Open the front cover. The printhead holder automatically moves to the center. Remove the protective tape.



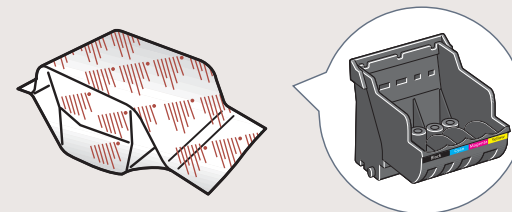
Protective tape

Serial number

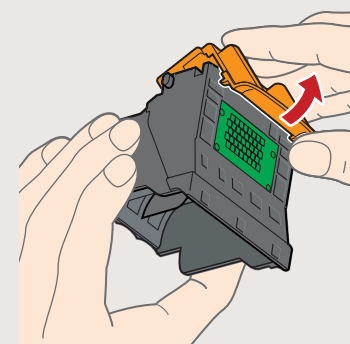
- 5 Write down the serial number located to the right of the printhead. You will need this later to register the product.

### 3 Install the Printhead

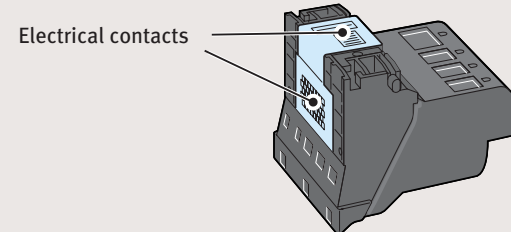
- 1 Remove the printhead from its package.



- 2 Turn the printhead over, then remove the orange protective cap.

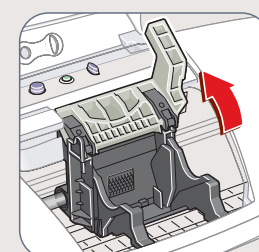


**NOTE:** Do not touch the electrical contacts.

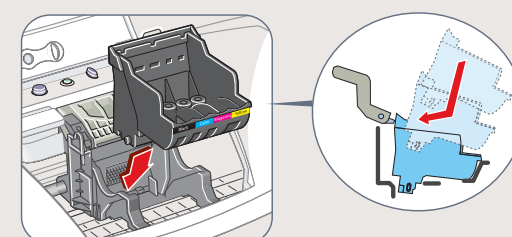


Electrical contacts

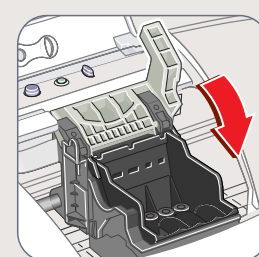
- 3 Raise the gray lock lever.



- 4 Gently slide the printhead into the holder. The printhead will rest at a slight angle. Do not press it down.

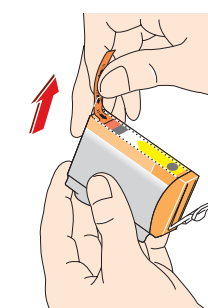


- 5 Lower the lock lever and gently press it down until it locks into place.

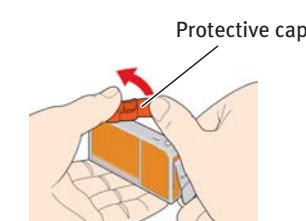


### 4 Install the Ink Tanks

- 1 Pull the orange tab off the yellow ink tank (BCI-3eY), then remove and discard the plastic wrapper.



- 2 Twist off and discard the orange protective cap.

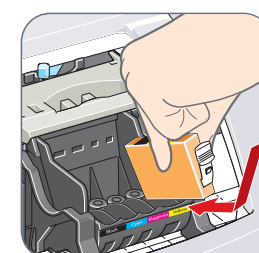


Protective cap

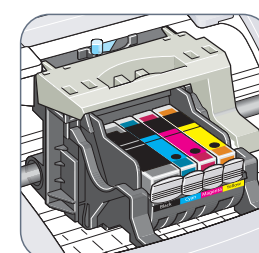
**NOTE:** To avoid spilling ink, never press on the sides of an ink tank.

- 3 Insert the ink tank into the correct slot. (Refer to the color guide on the printhead.)

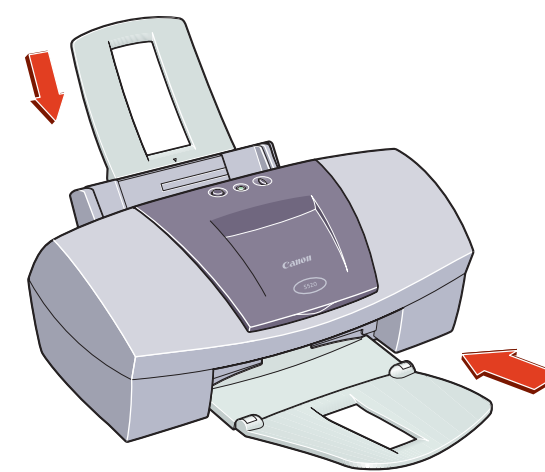
Press down gently until the ink tank locks into place.



- 4 Insert the remaining three ink tanks into their assigned slots.



- 5 Close the front cover and attach the paper rest and output tray.



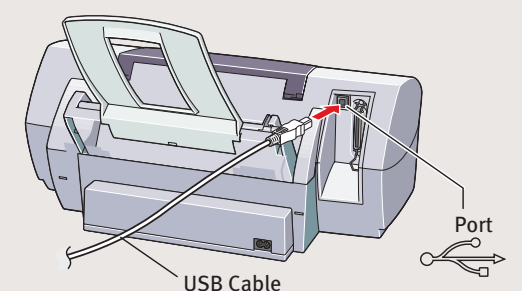
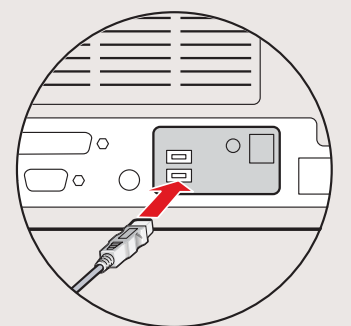
### 5 Connect the Printer To Your Computer

#### For USB Cables:

- 1 Turn the printer off.

**IMPORTANT:** Be sure printer is off before continuing, or the computer will attempt to install the printer driver before the printer is ready.

- 2 Connect one end of the USB cable to the computer, the other to the printer.



USB Cable

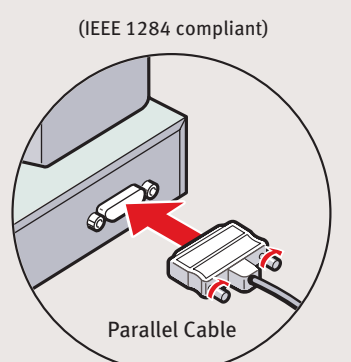
Port

#### For Parallel Cables:

- 1 Turn the printer off.

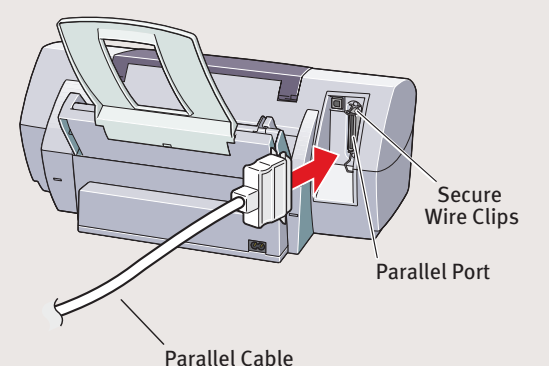
**IMPORTANT:** Be sure printer is off before continuing, or the computer will attempt to install the printer driver before the printer is ready.

- 2 Connect one end of the parallel cable to the computer, the other to the printer.



(IEEE 1284 compliant)

Parallel Cable



Secure Wire Clips

Parallel Port

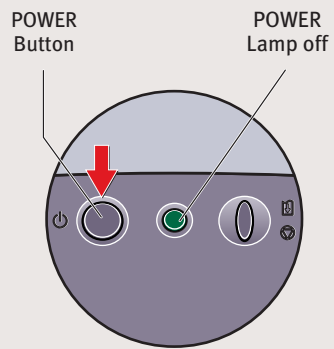
Continue with Step 6 on side two.





## 6 Install the Printer Driver (Windows®)

- 1 Be sure to **TURN THE PRINTER OFF** before continuing.



**NOTE:** For Windows® XP, Windows 2000 or Windows NT 4.0, log on to Windows as an Administrator before continuing.

- IMPORTANT:** If you see the Add New Hardware Wizard, click **Cancel**.



- 2 Close any open software applications, then insert the “S520 Setup Software & User's Guide” CD-ROM. The setup program should run automatically.

**NOTE:** If the setup program does not run, click **Start**, then **Run**, then type D:\msetup.exe, where D is your CD-ROM drive.

- 3 Read the Welcome screen, then click **Next**.

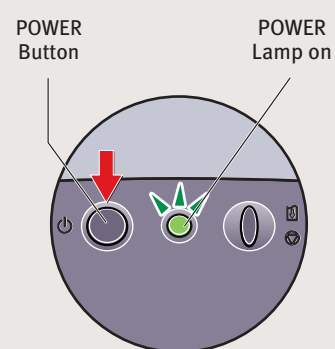
- 4 Read the License Agreement, then click **Yes**.

- 5 When the main menu appears, click **Install**.



**NOTE:** If you are prompted to restart Windows, remove the CD-ROM, then click **OK**. After the computer restarts, insert the CD-ROM and continue.

- 6 **TURN THE PRINTER ON** so the printer port (connection) can be automatically detected.



The software will begin identifying the printer port being used.

- IMPORTANT:** If your computer cannot detect a printer port, refer to the Troubleshooting chapter in the “S520 Quick Start Guide” for instructions.

- 7 When the Terminate Installation window appears, click **OK**.

- 8 Follow the on-screen instructions to continue with Product Registration.

**NOTE:** Remember to register your product to ensure product support. The serial number is located on the inside of the printer, to the right of the printhead.

- 9 When the software screen appears, click **Install**.



- 10 When the Terminate Installation window appears, click **OK**, then **Exit**.

**NOTE:** For more information, refer to the “S520 Quick start Guide” or view the Photo Application Guide on the “Setup Software & User's Guide” CD-ROM.

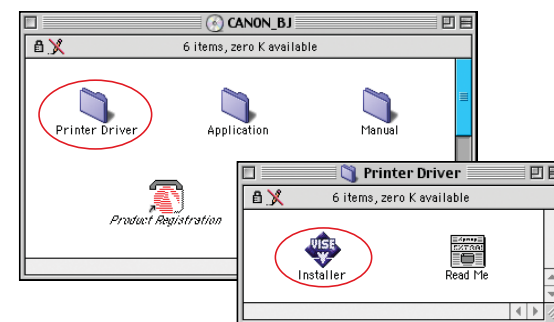
- 11 To insure highest quality output, continue with **Step 7 Align the Printhead**.

## 6 Install the Printer Driver (Macintosh®)

- 1 Insert the “S520 Setup Software & User's Guide” CD-ROM.

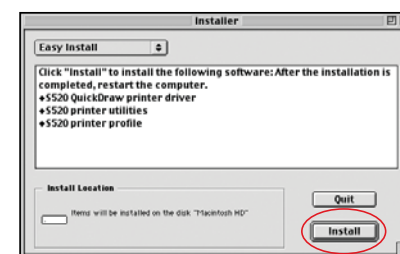
**NOTE:** Screen shots may differ depending on the operating system used.

- 2 Open the printer driver folder on the CD-ROM, then double-click the **Installer** icon.

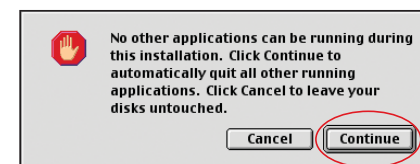


- 3 Read the License Agreement and click **Accept**.

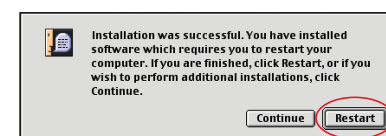
- 4 Click **Install**. The printer driver will load automatically.



- 5 If the message “No other applications can be running...” displays, click **Continue**.



- 6 When the “Installation was successful” screen displays, **Restart** your computer.



**NOTE:** Register your product to ensure product support. Open the printer driver folder and double-click the **Product Registration** icon, then follow the on-screen instructions.

The serial number is located on the inside of the printer, to the right of the printhead.

## 7 Align the Printhead

Before using the printer, align the printhead to ensure the best quality printing.

- 1 Load a stack of blank paper in the paper rest.
- 2 Start the alignment procedure.

**Windows:**

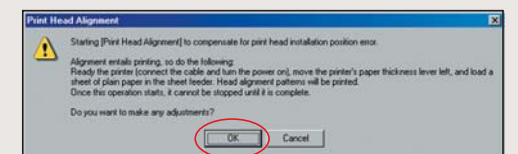
- a. Select **Start**, then **Settings**, then **Printers**.

**NOTE:** For Windows XP select **Start**, **Settings**, then **Control Panel**. Then click on **Printers and Other Hardware**, then **Printers and Faxes**.

- b. Right-click the **Canon S520** icon, then click **Properties**.

- c. Click the **Maintenance** tab, then click the **Print Head Alignment** icon.

- d. When asked to start printhead alignment, click **OK**.



- e. Follow the on-screen instructions to complete printhead alignment.

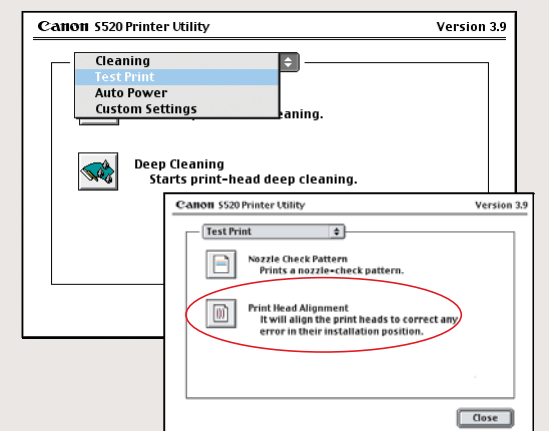
**Macintosh:**

- a. From the **File** menu in a software application, click **Page Setup**.

- b. Click the **Utilities** button.

- c. Select **Test Print** from the pull down menu.

- d. Click the **Print Head Alignment** icon.



- e. Follow the on-screen instructions to complete printhead alignment.

- 3 Click **OK** (Windows) or **Close** (Macintosh) when finished.