

Canon

***i*950**

Color Bubble Jet Printer

Quick Start Guide

Canon i950 Color Bubble Jet Printer Quick Start Guide.

Copyright

This manual is copyrighted by Canon U.S.A., Inc. with all rights reserved. Under the copyright laws, this manual may not be reproduced in any form, in whole or in part, without the prior written consent of Canon U.S.A., Inc.

© 2002 Canon U.S.A., Inc.

Disclaimer

Canon U.S.A., Inc. has reviewed this manual thoroughly in order that it will be an easy-to-use guide to your Canon i950 Color Bubble Jet Printer. All statements, technical information and recommendations in this manual and in any guides or related documents are believed reliable, but the accuracy and completeness thereof are not guaranteed or warranted, and they are not intended to be, nor should they be understood to be, representation or warranties concerning the products described.

Specifications are subject to change without notice.



As an ENERGY STAR partner, Canon U.S.A., Inc., has determined that this product meets the ENERGY STAR guidelines for energy efficiency.

All information regarding non-Canon products was compiled from publicly available information. No representation is made regarding the accuracy thereof.

Trademarks

Canon is a registered trademark of Canon Inc. PhotoRecord is a trademark of Canon Information System Research Australia. Macintosh, Mac and the Mac logo are registered trademarks of Apple Computer, Inc., registered in the U.S. and other countries. All other product and brand names are trademarks of their respective owners.

Canon U.S.A., Inc.
One Canon Plaza
Lake Success, NY 11042

Contents

Basic Printing

Turning on the Printer	3
Loading Paper	4
Using Special Media	6
Printing with Windows	9
Printing with Macintosh	11

Advanced Printing

Applications Included in the CD-ROM Package	13
Printing Borderless Photographs with Windows	14
Printing Borderless Photographs with Macintosh	17
Accessing Printer Driver	21
Adjusting Print Quality for Photographs	23
Using Printer Driver Options.....	30

Printing Maintenance

Replacing an Ink Tank.....	31
When Printing Becomes Faint or Colors are Incorrect	36
Printing the Nozzle Check Pattern	37
Print Head Cleaning.....	39
Print Head Deep Cleaning.....	42
Aligning the Print Head.....	44

Troubleshooting

Cannot Install the Printer Driver.....	50
Print Quality is Poor or Contains Errors	51
Troubleshooting Printer Hardware.....	53
Paper Does Not Feed Properly	54
Handling Error Messages	55
An Error Message Appears on the Screen	56


Appendix

User's Guide Table of Contents	57
Specifications	58
Safety Precautions	60
Regulatory Information	62
Canon Printer and Scanner Limited Warranty --- (USA Only)	63

Index	65
--------------------	-----------

Contents

Basic Printing

 **Note** This *Quick Start Guide* describes some of the features of your i950 printer and how to use them. For more information, view the *i950 User's Guide* on the *Setup Software & User's Guide CD-ROM*, or use the online help within your printer driver interface:

Windows

While in the printer's Properties window press the **F1** key, or click ? in the upper right corner. Then click the feature you want to know more about, or click the **Help** button when displayed.

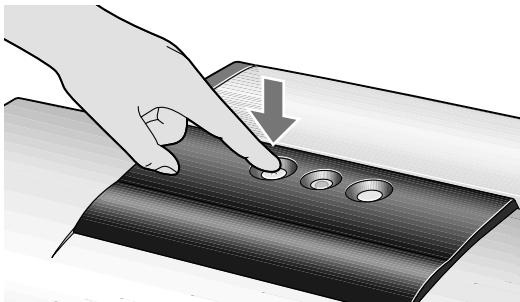
Macintosh


Turn Balloon **Help** on by selecting **Help**, then **Show Balloon Help**.

Turning on the Printer

1 Press the POWER button.

The POWER lamp flashes while the printer is warming up, and changes to steady (non-flashing) green when the printer is ready.



 **Note** If the POWER lamp changes to orange and begins flashing, refer to the section "**Handling Error Messages**" on page 55.

Loading Paper

■ Print Media to Avoid

Do not use the following types of paper. Using such paper will not only produce unsatisfactory results, but can also cause the printer to jam or malfunction.

- Folded, curled or wrinkled paper
- Damp paper
- Excessively thin paper (less than 64 gsm or 17 lb)
- Excessively thick paper* (more than 105 gsm or 28 lb)

*non-Canon branded paper

- Picture postcards
- Postcards affixed with photos or stickers
- Envelopes with double flaps
- Sealed envelopes
- Envelopes with an embossed or treated surface
- Any type of paper with holes (such as loose-leaf)

■ Loading the Print Media

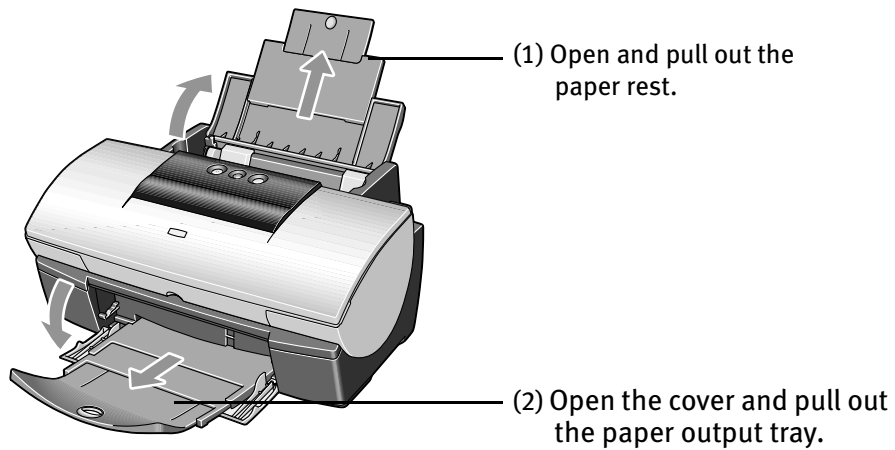
This section describes how to load plain paper into your printer.

- For detailed information on the specialty media Canon provides for use with its various printers, refer to the section "**Using Special Media**" on page 6.
- Consult the *User's Guide* for detailed instructions on how to load envelopes and specialty media into the printer.

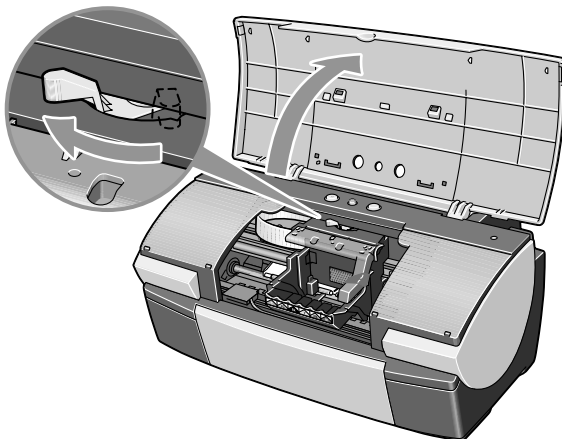
1 Flatten the four corners of the paper before loading it.

Important When paper is curled, hold the opposing curled corners and gently bend them in the opposite direction until the paper becomes completely flat.

2 Prepare to load paper.

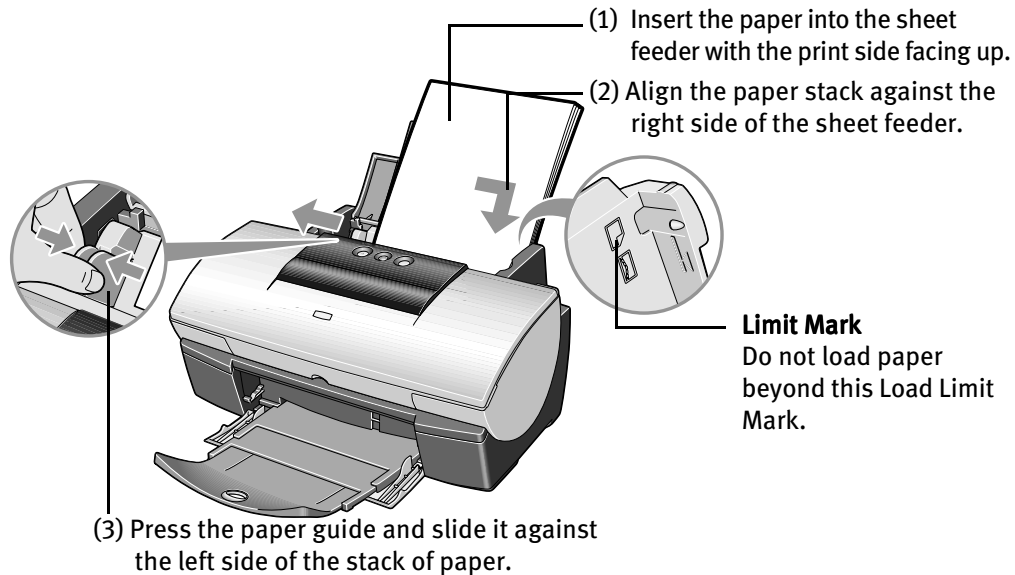


- (3) Open the front cover and move the paper thickness lever to the correct position for the media in use.
Move the lever to the left position for plain paper.
Move the lever to the right position for envelopes, Banner Paper and T-Shirt Transfers.




Basic Printing

3 Load the paper.



When Printing is Finished

-  **Note**
- Do not stack more than 50 sheets in the paper output tray.
 - Do not touch the printed surfaces until the ink dries. For specific drying times, refer to the instructions packaged with your media.

Using Special Media

Canon recommends that you use genuine Canon media to ensure optimal print quality.

■ Photo Quality Media

- Photo Paper Pro
- Photo Paper Plus Glossy
- Matte Photo Paper
- Glossy Photo Paper
- Glossy Photo Cards
- High Gloss Photo Film
- High Resolution Paper




■ Media Suited for Business Documents

- High Resolution Paper
- Transparencies



■ Canon Special Media

Media Type	Paper Rest Load Limit	Paper Thickness Lever Position	Printer driver setting Media Type
Brilliant White Paper	Up to 150 sheets	Left	Plain Paper
Banner Paper	1 sheet(can print up to 6 connected sheets)	Right	
Photo Paper Pro	Letter: up to 10 sheets 4" x 6": up to 20 sheets	Left	Photo Paper Pro*1*2
Photo Paper Plus Glossy	Letter: 1 sheet 4" x 6": up to 20 sheets	Left	Photo Paper Plus Glossy
Matte Photo Paper	Up to 10 sheets	Left	Matte Photo Paper
Glossy Photo Paper	Up to 10 sheets	Left	Glossy Photo Paper
High Resolution Paper	Up to 80 sheets	Left	High Resolution Paper
High Gloss Photo Film	1 sheet	Left	High Gloss Photo Film
Glossy Photo Cards	Up to 20 sheets	Left	Glossy Photo Paper *1
T-Shirt Transfers	1 sheet	Right	T-Shirt Transfer
Transparencies	Up to 30 sheets	Left	Transparency

-  **Note**
- For a detailed description of print media types, refer to the *User's Guide*.
 - *1: You may load up to 10 Letter/A4 size sheets, but put them in place one at a time to keep them from sticking to each other.
 - *2: Print settings are much easier to select if you use the applications included on the *Setup Software & User's Guide CD-ROM* when printing with Photo Paper Pro (4" x 6") and Glossy Photo Cards. For instructions on how to print from software applications, refer to the on-screen *Photo Application Guide*.

Basic Printing

■ Caring for Your Photographs

The Canon i950 Photo Printer will generate spectacular results for printing photographs, especially when used with Canon specialty media. All images are susceptible to fading over time, but proper care of prints made from your i950 Photo Printer will ensure that print quality lasts long into the future.

Many environmental factors can impact how long a printout will last before noticeable image fading occurs. Exposure to sunlight or other light sources, humidity, temperature, exposure to cigarette smoke and ozone are just some of the factors that can impact image permanence. While many of these variables cannot be controlled, there are basic measures that you can take to prolong image quality:

- Use Canon Photo Paper Pro and genuine Canon inks. Try Canon Photo Paper Pro or Canon Photo Paper Pro for Borderless Printing (4"×6"). Both papers are specifically designed to work with genuine Canon inks.
- Mount images under glass to reduce exposure to ozone, cigarette smoke and other environmental factors that can degrade images.
- Keep printed images out of direct sunlight or other intense light sources.



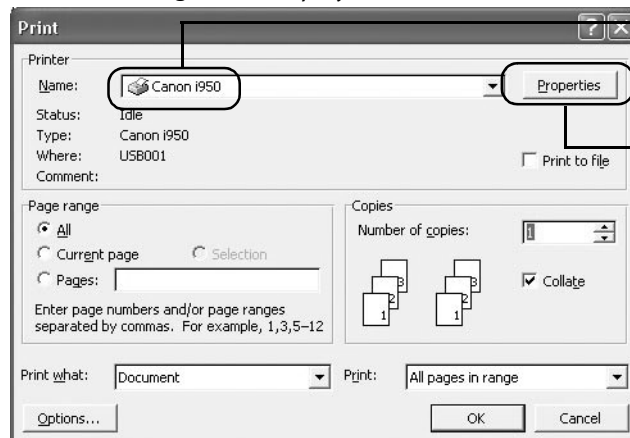
Printing with Windows

- Note**
- The menu screens and dialog boxes that appear may vary, depending on the software application you are using.
 - The steps described in this section are for printing in Windows XP.

1 Create a document, or open a file to print.

2 Open the Printer Properties dialog box.

(1) Select **Print** from the application software's **File** menu.
The **Print** dialog box is displayed.



(2) Ensure that **Canon i950** is selected.

(3) Click **Preferences** (or **Properties**).

- Note** In Windows 2000, click the **Main** tab in the **Print** dialog box.


Basic Printing

3 Specify the required settings.

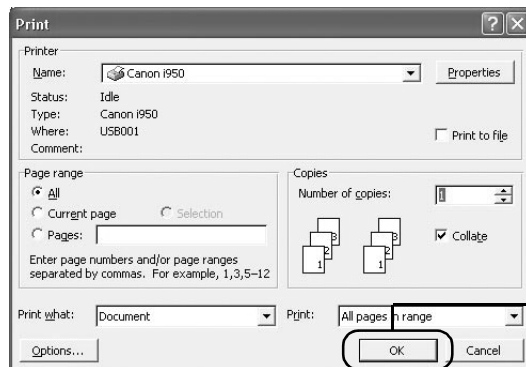


(1) Click **Media Type** to select the type of media loaded in the printer.

(2) Click **OK**.

-  **Note**
- From the Page Setup tab select the correct document size to be printed.
 - To adjust Print Quality settings, select **Custom** and click **Set** on the **Main** tab. You can control the print quality in the **Set Print Quality** dialog box.
 - For details about other printer driver functions, refer to the *User's Guide* or Help.
 - Select **Preview before printing** by clicking the check box. This displays a preview screen that allows you to confirm the selected printing effects and how your document will look when printed. Some applications do not contain the function to display the preview screen.

4 Print the document




(1) Click **Print** or **OK**.

-  **Note** You can cancel a print job in progress by simply pressing the **RESUME/CANCEL**  button on the printer.

Macintosh

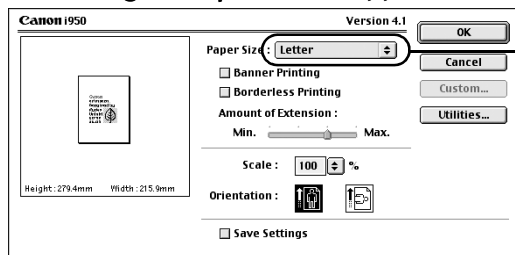
Printing with Macintosh

-  **Note**
- The menu screens and dialog boxes that appear may vary, depending on the software application you are using.
 - The steps described in this section are for printing in Mac OS 9.

1 Create a document, or open a file to print.

2 Select the Paper Size.

(1) Select **Page Setup** from the application software's **File** menu.

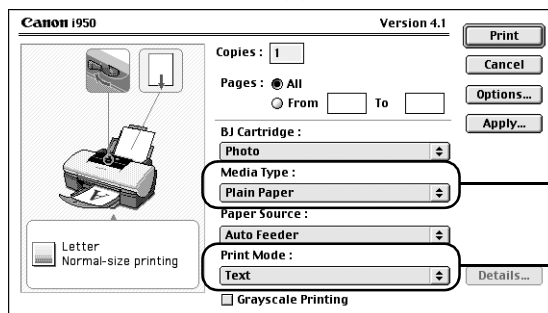


(2) Select the desired paper size from the **Paper Size** pull-down menu.

(3) Click **OK**.

3 Specify the required settings.

(1) Select **Print** from the application software's **File** menu.



(2) Select the **Media Type** from the pull-down menu.

(3) Select a type of document from the **Print Mode** pull-down menu.

(4) Click **Print**.

Basic Printing



Note

- When you select a type of document from the **Print Mode** pull-down menu, the document is printed in color and print quality suited to the characteristics of the **Media Type** you have selected.

Text: Select when printing documents consisting mainly of text.

Graphic: Select when printing documents consisting mainly of graphs and graphics (illustrations) with strong color definition.

Photo: Select when printing documents consisting mainly of photographs and graphics featuring fine color gradation.


Manual: If you select **Manual**, the **Details** button becomes selectable. Click the **Details** button to display the Detailed Setting dialog box where you can fine-tune the Print Quality and the Halftoning settings. Refer to the *User's Guide*.

- For details about other printer driver functions, refer to the *User's Guide* or Help.
- You can cancel a print job in progress by simply pressing the **RESUME/CANCEL** ⏏ button on the printer.

Advanced Printing

Applications Included in the CD-ROM Package

The *Setup Software & User's Guide CD-ROM* includes photo applications designed to edit the photographs taken by digital camera and print them as photo-lab quality prints. Please use the application(s) suitable for your print purposes.

-  **Note**
- To install applications, refer to *Easy Setup Instructions*.
 - For details about photo applications, refer to the *Photo Application Guide* included on the *Setup Software & User's Guide CD-ROM*.

■ Easy-PhotoPrint (Windows)

You can make Borderless Printing easily and quickly, just by selecting a photograph taken with a digital camera and the paper type on which to print. You can also use simple editing features, such as trimming and image rotation.
Easy-PhotoPrint is Exif Print (Exif 2.2) compatible.

■ ImageBrowser (Macintosh)

You can import photographs taken with a digital camera into a computer, edit and caption them.
You can also make Borderless Printing or an Index Print without difficulty.
It is Exif Print (Exif 2.2) compatible.

■ ZoomBrowser EX/PhotoRecord (Windows)

You can import photographs taken with a digital camera into a computer, edit, add a caption, and print them in an album format.
PhotoRecord is Exif Print (Exif 2.2) compatible.

■ PhotoStitch (Windows/Macintosh)

You can select multiple photographs and merge them to create a panoramic photo.

■ Easy-WebPrint (Windows)

You can easily print pages displayed on the Internet Explorer or pages from the User's Guide (HTML manual of this printer) in full size. Easy-WebPrint automatically adjusts the layout when printing a screen. This feature enables you to print a screen without its right end being cut off.

This application is a plug-in for Internet Explorer, and its toolbar is automatically added to Internet Explorer after installation.



Printing Borderless Photographs with Windows

This chapter describes the procedure for using the Borderless Printing mode when printing from photo applications. These applications are included in your *Setup Software and User's Guide CD-ROM*.

Note Media Types Suitable for Borderless Printing

Media Types compatible with Borderless Printing include Photo Paper Plus Glossy (LTR, 4" x 6"), Photo Paper Pro (LTR, 4" x 6"), Matte Photo Paper (LTR), and Glossy Photo Paper (LTR).

Follow the steps below to create color prints of digital camera photographs with Easy-PhotoPrint using the Borderless Printing function. Easy-PhotoPrint supports Exif Print (Exif 2.2).

- Exif Print (Exif 2.2) is a new worldwide standard. Under Exif 2.2, the digital camera can record data tags for specific camera settings and functions such as whether the flash was on or off, if the camera was in the portrait or night scene mode, etc. BJ Printers support Exif Print and use Easy-PhotoPrint to read the camera data precisely, producing optimal prints. This enables you to create prints that reproduce your vision more accurately than ever before.
- Easy-PhotoPrint can handle only JPEG files (filename extension: .jpg and .jpeg).

1 Start Easy-PhotoPrint.

- (1) Insert the memory card into a computer.

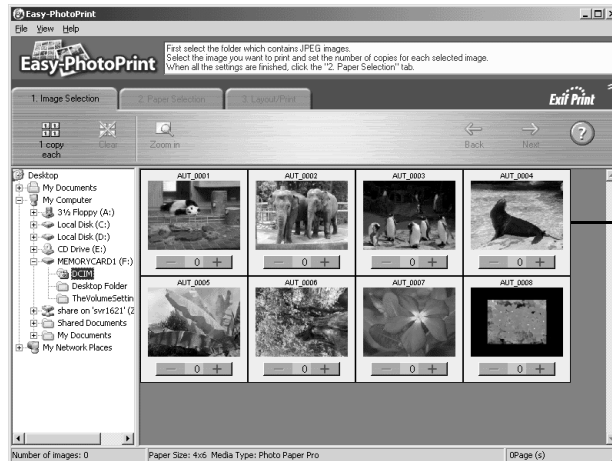
This section describes the steps used for printing the photographs stored on the memory card. Consult your memory card documentation for instructions on how to insert the memory card into your computer.

- (2) Click **Start**, select **All Programs** (or **Programs**), **Canon Utilities**, **Easy-PhotoPrint**, and then **Easy-PhotoPrint**.
The **1.Image Selection** sheet is displayed.

2 Select photographs.

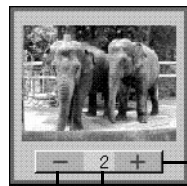
- (1) Select the memory card folder, then the folder containing the digital photographs.

All photographs in the selected folder are displayed.



Thumbnail

- (2) Click the **[+]** button on the thumbnail of the photograph you want to print and specify the number of copies.



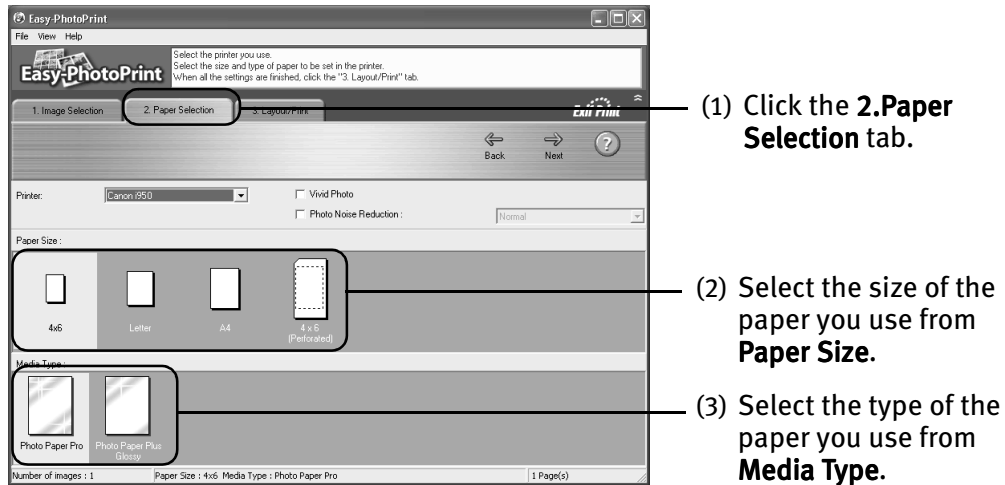
Increases the number of copies.

Displays the specified number of copies.

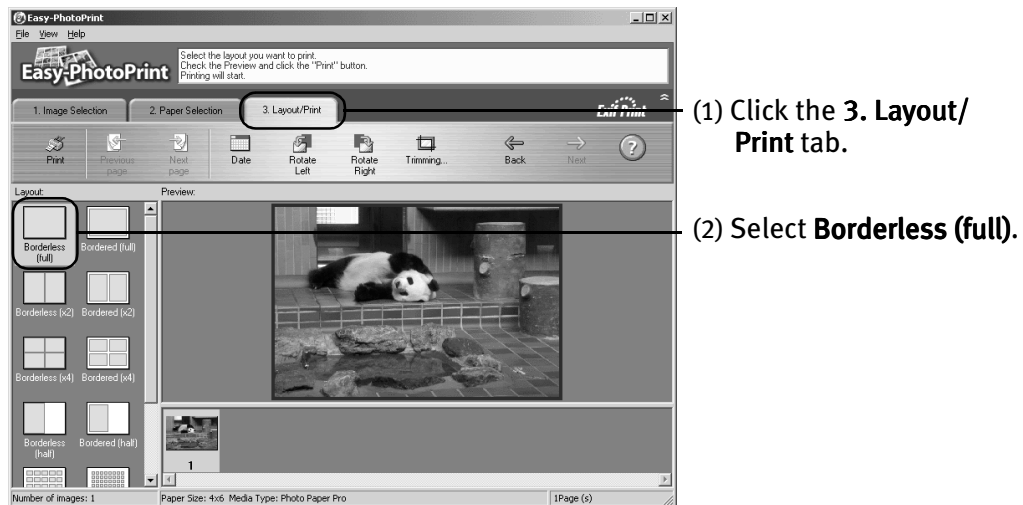
Decreases the number of copies.

Advanced Printing

3 Select the paper.



4 Select the layout.



- (3) Load the media type specified in the **2. Paper Selection** tab.
- (4) Click **Print**.



Printing Borderless Photographs with Macintosh

This chapter describes the procedure for using the Borderless Printing mode when printing from photo applications. These applications are included in your *Setup Software and User's Guide CD-ROM*.

Note Media Types Suitable for Borderless Printing

Media Types compatible with Borderless Printing include Photo Paper Plus Glossy (LTR, 4" x 6"), Photo Paper Pro (LTR, 4" x 6"), Matte Photo Paper (LTR), and Glossy Photo Paper (LTR).

Follow the steps below to create color prints of digital camera photographs with ImageBrowser using Borderless Printing.

Exif Print (Exif 2.2) is a new worldwide standard. Under Exif 2.2, the digital camera can record data tags for specific camera settings and functions such as whether the flash was on or off, if the camera was in the portrait or night scene mode, etc.

BJ Printers support Exif Print and use ImageBrowser to read the camera data precisely, producing optimal prints.

This enables you to create prints that reproduce your vision more accurately than ever before.

1 Start ImageBrowser.

- (1) Insert the memory card into a computer.

This section describes the steps used for printing the photographs stored on the memory card. Consult your memory card documentation for instructions on how to insert the memory card into your computer.

- (2) Double-click the **Canon ImageBrowser** (alias) icon on the desktop.

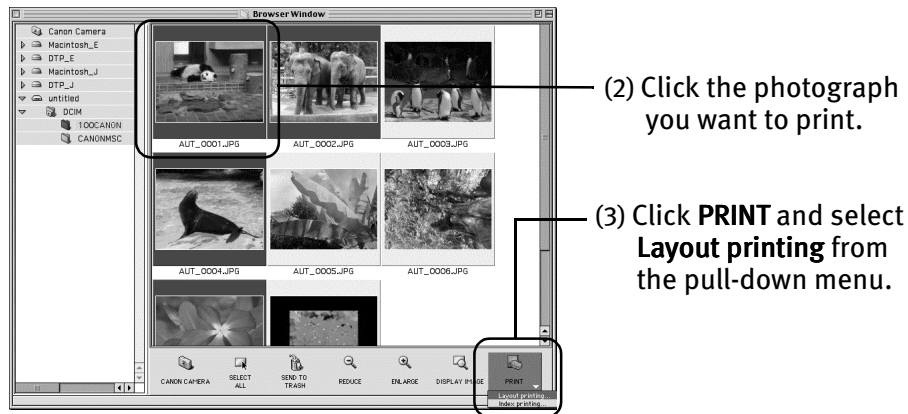
If the Canon ImageBrowser icon is not displayed on the desktop, open the Canon ImageBrowser folder, and double-click the **ImageBrowser** icon in the folder.

Advanced Printing

2 Select photographs.

- (1) Select the memory card folder, then the folder containing the digital photographs you want to print.

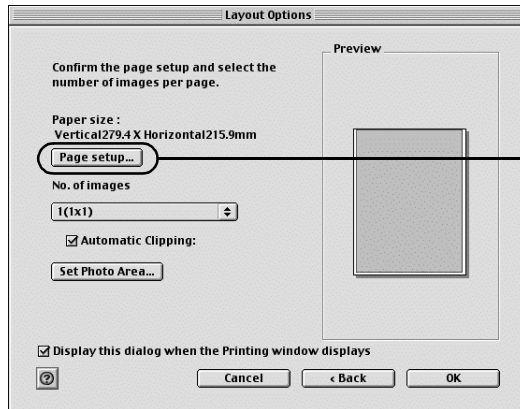
All photographs in the selected folder are displayed.



The **Layout Options** dialog box appears and the layout selection wizard starts.

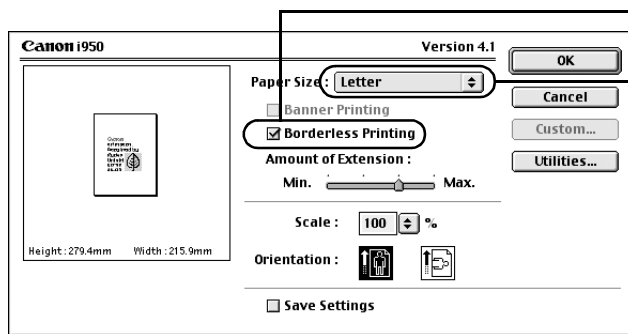
3 Enter layout options.





(3) Click **Page setup**....

4 Select Borderless Printing.



(1) Select **Borderless Printing**.

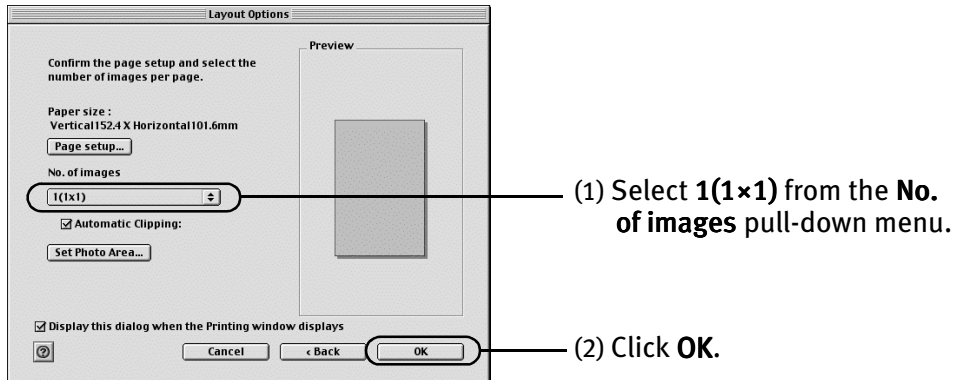
(2) Select a paper size from the **Paper Size** pull-down menu. The menu only displays paper sizes compatible with Borderless Printing.

(3) Click **OK**.

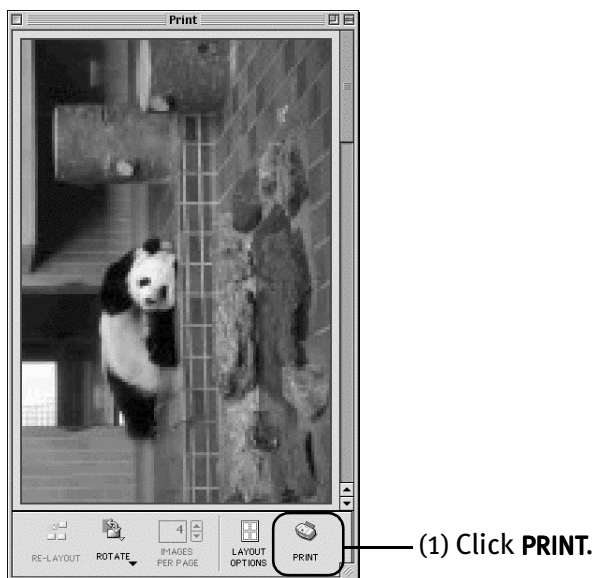
A message box pops up. Read the message and click **OK**. This returns you to the **Layout Options** dialog box.

Advanced Printing

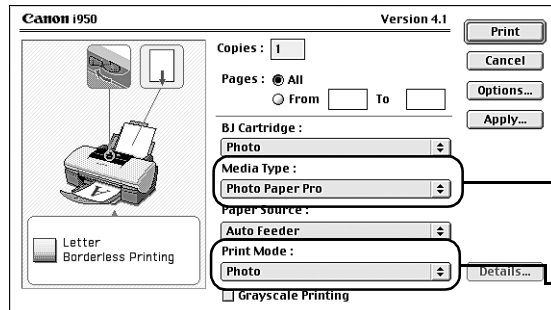
5 Specify the number of photographs to print on one page.



6 Print the photograph.



The Print dialog box is displayed.



- (2) Select a type of media for printing from the **Media Type** pull-down menu.
- (3) Select **Photo** from the **Print Mode** pull-down menu.

(4) Load the selected paper in the printer.

(5) Click **Print**.



Accessing Printer Driver

The **Printer Properties** dialog box can be opened from either within an application, or directly from the Windows **Start** menu.

- Note**
- This manual refers to Windows XP operation. The operations may vary depending on your operating system.
 - Depending on your application program, the command and menu names may differ, and there may be more steps involved in opening the Printer Properties dialog box. For further details, see the user's manual for your application.

■ Opening the Printer Properties Dialog Box from Your Application Program

- 1** In your application, select the command to print a document.
The **Print** dialog box can usually be opened by selecting **Print** from the **File** menu.
- 2** Ensure that Canon i950 is selected. Then click **Preferences** (or **Properties**).
The **Printing Preferences** (or **Printer Properties**) dialog box opens.

■ Opening the Printer Properties Dialog Box Directly from the Start Menu

This method is used for maintenance operations such as print head cleaning, or to specify printer settings common to all application programs.

When the **Printer Properties** dialog box is opened from the **Start** menu, additional tabs appear, including the **Details** tab. These tabs do not appear when the Printer Properties dialog box is opened from within an application.

For further information about these additional tabs, refer to your Windows documentation.

- 1** Click **Start** and select **Control Panel, Printers, and Other Hardware**, and then **Printers and Faxes**.

For non-XP Windows, Click **Start**, select **Settings**, and then **Printers**.

- 2** Select the Canon i950 icon.

- 3** Open the **File** menu, and select **Printing Preferences (or Properties or Main)**.

The **Printer Properties** dialog box opens.

Adjusting Print Quality for Photographs

■ Improving Printed Images

Two important factors control the quality and output of your printed images:

Paper and Ink

Using recommended Canon paper, specialty media, and inks for printing photographs can significantly improve the quality of your printouts. See the inside back cover for a list of Canon media and inks for this printer.

Printer Driver Settings

The printer driver has a variety of settings that can be used to creatively enhance the colors and output of your photographs. Many of these features are covered in this chapter.

For more detailed information, see the *i950 User's Guide* on the *Setup Software & User's Guide CD-ROM*.

You can also access the online help in either of the following ways depending on your operating system:

Windows

- Press the **F1** key
- Click ? in the upper right corner, then click the feature you want to know more about.
- Click the Help button when displayed.

Macintosh

- Turn on **Balloon Help** by clicking **Help**, then **Show Balloons**.

■ Adjusting Print Quality

Features that affect the appearance and quality of your printed images can be controlled with the printer driver.

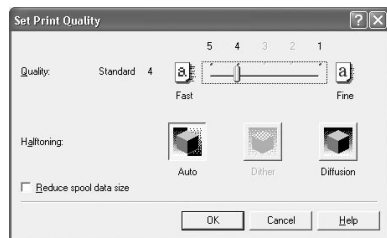
The i950 automatically adjusts printer settings to improve print quality based on the media type (plain paper, Photo Paper Pro, and so on). You can also customize the Print Quality settings if desired.

Advanced Printing

To manually adjust Print Quality settings:

Windows

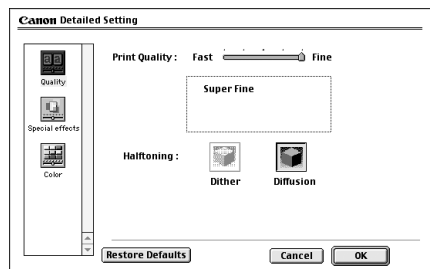
- 1 Open the Printer Properties dialog box.
See "Opening the Printer Properties Dialog Box from Your Application Program" on page 21.
- 2 Select Custom in Print Quality, then click Set... to open the Set Print Quality dialog box.
- 3 Move the slide bar to adjust the Print Quality.



- 4 When the process is complete, click OK.

Macintosh

- 1 Open the Print dialog box.
See "Printing with Macintosh" on page 11.
- 2 Click Print Mode and select Manual, then click Details... to open the Detailed Setting dialog box.
- 3 Move the slide bar to adjust the Print Quality.



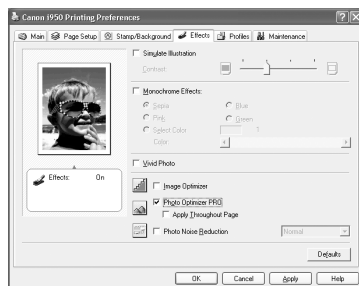
- 4 When the process is complete, click OK.

To automatically optimize the image:

Photo Optimizer PRO automatically adjusts the photographic images created with a digital camera. Use this feature to compensate for unsatisfactory color balance and over- or under-exposure before printing.


Windows

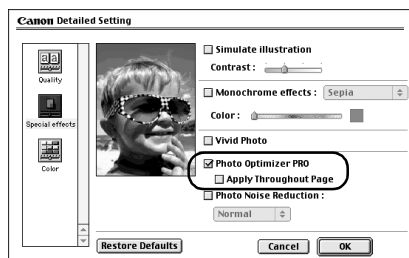
- 1 Open the Printer Properties dialog box.
See "Opening the Printer Properties Dialog Box from Your Application Program" on page 21.
- 2 Click the Effects tab.
- 3 Select the Photo Optimizer PRO check box.



- 4 Click OK.

Macintosh

- 1 Open the Print dialog box.
See "Printing with Macintosh" on page 11.
- 2 Click Print Mode and select Manual, then click Details... to open the Detailed Setting dialog box.
- 3 Click  (Special effects).
- 4 Select the Photo Optimizer PRO check box.



- 5 Click OK.

Advanced Printing

To use Vivid Photo option:

Vivid Photo intensifies background colors for fields, trees, oceans and skies, while maintaining natural skin tones in the images.

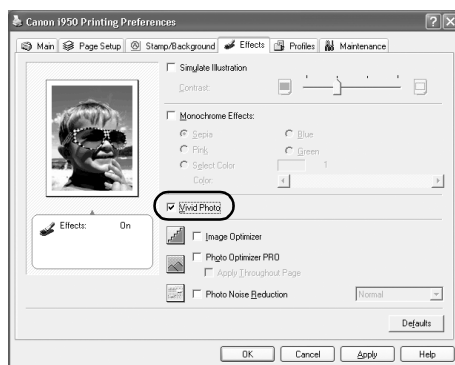


Note In Windows Me or Windows 98

The Vivid Photo function is not available, if Background Printing has been disabled.

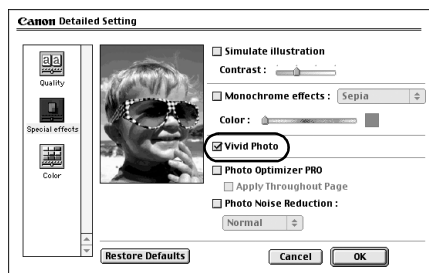
Windows

To use Vivid Photo, select the **Vivid Photo** check box on the **Effects** tab.



Macintosh

To use Vivid Photo, select the **Vivid Photo** check box under the **Special Effects**.



To reduce noise from images recorded with digital camera:

Photo Noise Reduction function reduces noise from blue portions, such as the sky and dark portions of the images recorded with your digital camera.

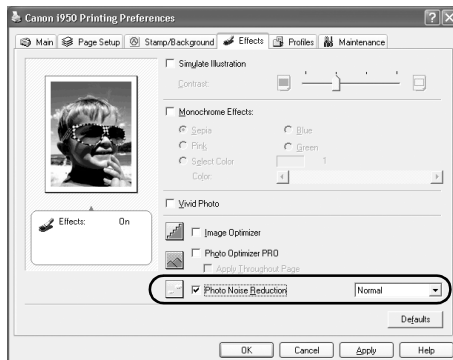


Note In Windows Me or Windows 98

The Photo Noise Reduction function is not available, if Background Printing has been disabled.

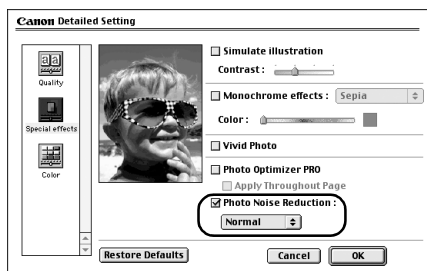
Windows

To use Photo Noise Reduction, select the **Photo Noise Reduction** check box on the **Effects** tab.



Macintosh

To use Photo Noise Reduction, select the **Photo Noise Reduction** check box under the **Special Effects**.



■ Saving and Recalling Driver Settings

When you change the printer driver settings for a specific print job, such as printing black and white photos, or printing documents with a special background, you can save and name the settings for future use on similar print jobs.

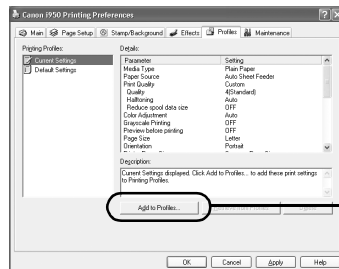
Windows

1 Open the Printer Properties dialog box.

See "Opening the Printer Properties Dialog Box from Your Application Program" on page 21.

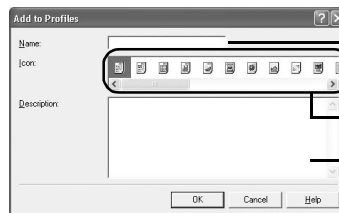
2 Click the Profiles tab.

3 Enter new settings in Profiles.



(1) Click **Add to Profiles**.

The Add to Profiles dialog box opens.



(2) Enter a name of profile for registering settings.

(3) Select an icon.

(4) Enter a description on the registering profile.

4 Click OK.

5 Click OK on the Profiles tab.

This registers your printer driver print settings.



Note You can retrieve or delete the print settings profile at any time.

Retrieving profile:

Select the desired profile from **Printing Profiles**, and click **Retrieve** from **Profiles**.

Deleting unwanted profile:

Select the desired profile from **Printing Profiles**, and click **Delete**.

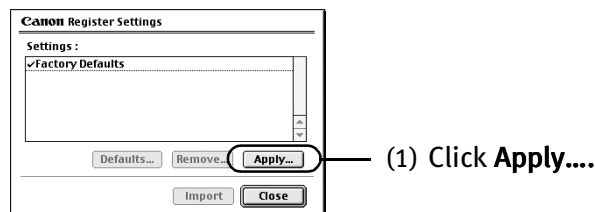
For details, click Help and refer to the topics of this function.

Macintosh

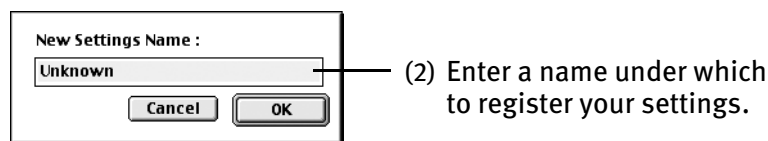
- 1 Open the Print dialog box.
See "Printing with Macintosh" on page 11.

- 2 Click Apply.
The Register Settings dialog box opens.


- 3 Enter the print settings to register.



The dialog box to enter the new settings name opens.



- 4 Click OK.
- 5 Click Close in the Register Settings dialog box.
This registers your printer driver print settings.

 **Note** You can retrieve or delete the saved driver settings at any time.

Retrieving print settings:


Select the name of the settings to retrieve from the Settings list and click **Import**.

Deleting unwanted drivers settings:

Select the name of the settings to delete from the Settings list and click **Remove**.

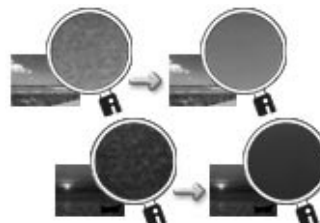
Using Printer Driver Options

Getting to know the basic features of your printer driver provides you with sufficient expertise to print a wide range of images and documents. The illustrations below provide a basic introduction to the many features offered by your printer driver.

 **Note** For detailed description of the printer driver functions, refer to the *User's Guide*.



Printing with Borderless Printing



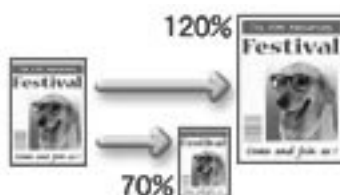
Reducing Noise from Images Recorded with Digital Camera



Smoothing the Rough Edges of Certain Images



Automatically Resizing the Image to Fit the Page



Resizing the Image by Selecting the Scaling Ratio



Adding Illustrated Effect to Documents

Printing Maintenance

Replacing an Ink Tank


When replacing an ink tank, check the model number very carefully. The printer will not print properly if a wrong ink tank is used, or if an ink tank is installed in the incorrect position.

With this printer, ink tanks must be installed from the right in the order indicated below.

- Magenta: BCI-6M
- Photo Magenta: BCI-6PM Photo
- Yellow: BCI-6Y
- Black: BCI-6BK
- Photo Cyan: BCI-6PC Photo
- Cyan: BCI-6C

■ Knowing When to Replace an Ink Tank

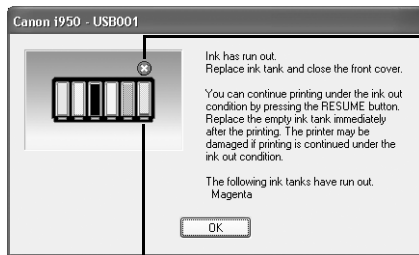
If an ink tank needs to be replaced, the **POWER** lamp changes from green to orange and flash four times, as soon as printing begins. It is important to quickly identify the empty tank using the BJ Status Monitor (Windows) or error messages (Macintosh) and replace it.

 **Note** If missing characters or white streaks appear despite sufficient ink levels, refer to the section "**When Printing Becomes Faint or Colors are Incorrect**" on page 36.

Printing Maintenance

Windows

The following message appears when an ink tank is empty. Printing resumes as soon as the ink tank is replaced and the front cover is closed.



The ink tank with [X] symbol is out of ink. Replace it with a new ink tank.

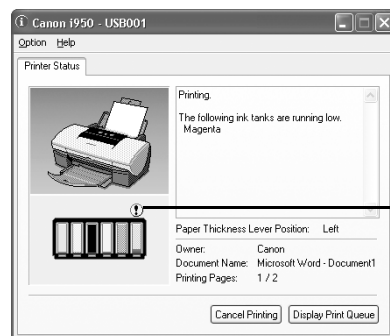
- Press the **RESUME/CANCEL** button on the printer to resume printing with the empty ink tank. When printing is finished, replace the ink tank immediately. If you continue printing with an empty ink tank, it may cause the machine to malfunction.
- Menu screens will vary to some degree, depending on your software environment.

Empty ink tank

Note When Low Ink is Detected

The BJ Status Monitor appears as soon as a print job starts.

[!] Indicates a low ink level. Obtain a replacement ink tank as soon as possible.

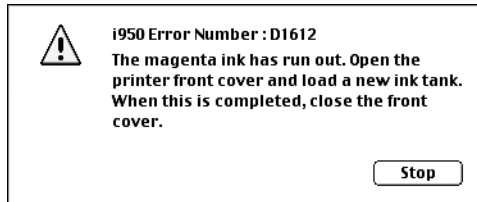


- Click **Cancel Printing** to cancel the current print job.

Ink tank with low ink level

Macintosh

The following message is displayed when an ink tank is empty. Printing will resume as soon as the ink tank is replaced and the front cover is closed.

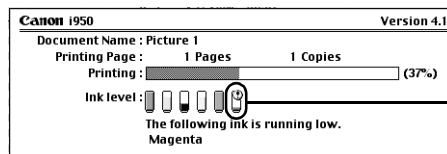


- Press the **RESUME/CANCEL** button on the printer to resume printing with the ink tank empty. When printing is finished, replace the ink tank immediately. If you continue printing with an empty ink tank, it may cause the machine to malfunction.

Note When Low Ink is Detected

The following message is displayed as soon as a print job starts.

[!] Indicates a low ink level. Obtain a replacement tank as soon as possible.



Ink tank with low ink level

Printing Maintenance

■ Replacing an Ink Tank

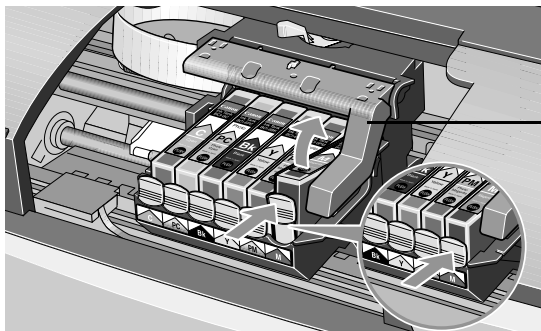
When ink tanks run out of ink, replace them following the procedure described below.

1 Ensure that the printer is on, and then open the front cover.

The print head holder moves to the center.

2 Remove the empty ink tank.

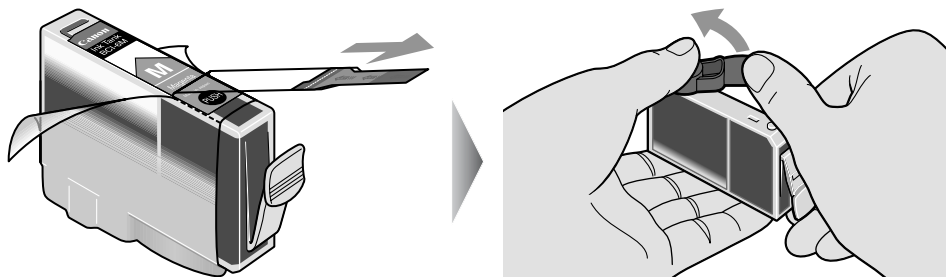
Push the tab and remove the ink tank.



Do not touch the lock lever; remove only the ink tank.

- Important**
- Handle ink tanks carefully to avoid staining clothing or the surrounding area.
 - Discard empty ink tanks according to the local laws and regulations regarding disposal of consumables.

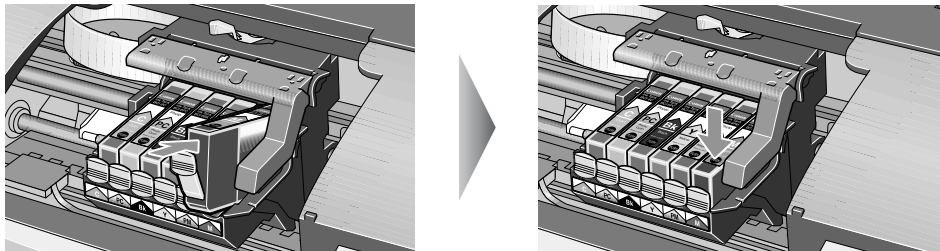
3 Prepare a replacement ink tank.



- (1) Unpack the new ink tank and pull off the orange tape.
- (2) Remove the orange protective cap from the bottom of the ink tank and discard it.

- Important**
- Do not squeeze the sides of the ink tank, as this may cause the ink to leak out and stain your clothes and hands.
 - Do not re-attach the protective cap once you have removed it.
 - Once the protective cap is removed, do not touch the open ink port.


4 Install the new ink tank.



- (1) Insert the ink tank in the print head holder.
- (2) Press on the "PUSH" mark until the ink tank snaps firmly into place.

5 Close the front cover.

The print head holder moves to the right. The ink tank installation process is now complete.

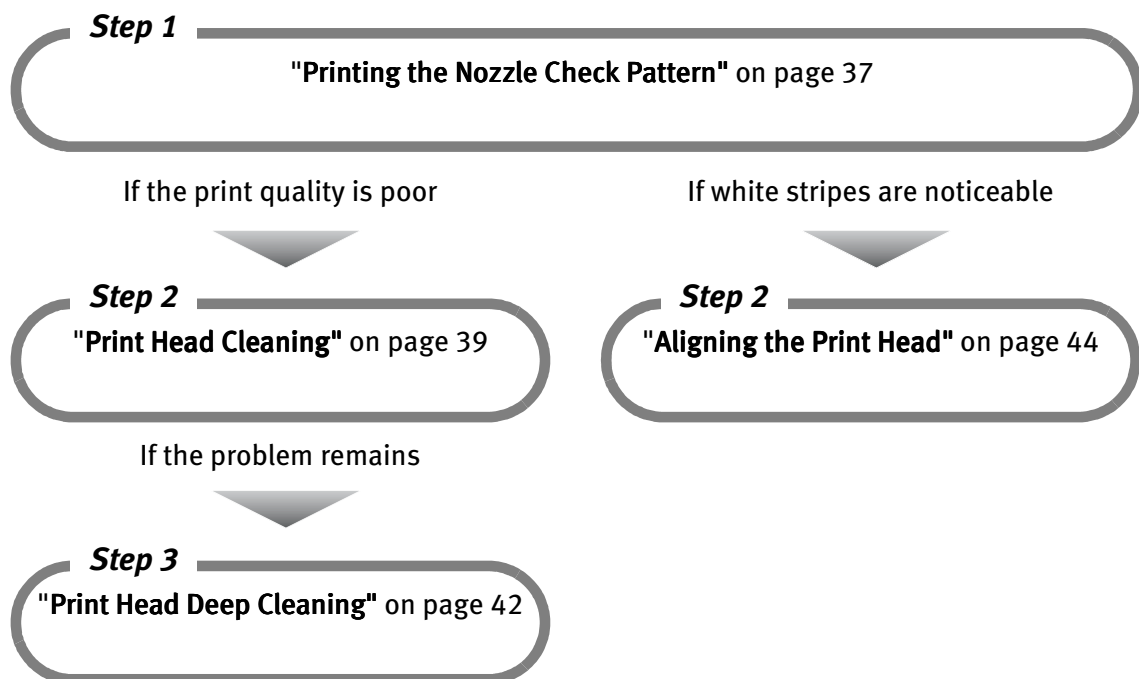
-  **Note**
- To maintain optimal print quality, use an ink tank within six months of its first use.
 - Once an ink tank has been used, do not remove it from the printer and leave it out in the open. An ink tank left out in the open and then reinstalled into the printer may not function.
 - Color ink may be consumed even when a black-and-white or grayscale printing is specified. Color ink is consumed in the head cleaning and deep cleaning, which are necessary to maintain the printer's capabilities.


When Printing Becomes Faint or Colors are Incorrect

When printing becomes faint or colors are incorrect, even if ink remains in the ink tanks, see if the print head nozzles are clogged, and clean them first. Follow the procedures below and maintain the print head.

Important Before maintaining the print head, check the following:

- Open the front cover and make sure that the ink tank contains ink. If it is out of ink, replace it.
- Ensure that the orange tapes from the ink tanks have been peeled off.
- Press "PUSH" on the ink tank and ensure that the ink tank is installed securely.
- Increase the Print Quality setting in the printer driver settings.



 **Note** If print head maintenance does not resolve the problem, contact the Customer Care Center.

Printing the Nozzle Check Pattern

Print the nozzle check pattern to determine whether ink ejects properly from the print head nozzles, and to verify print head alignment. Use this function if printed results are blurred or if the color is incorrect.

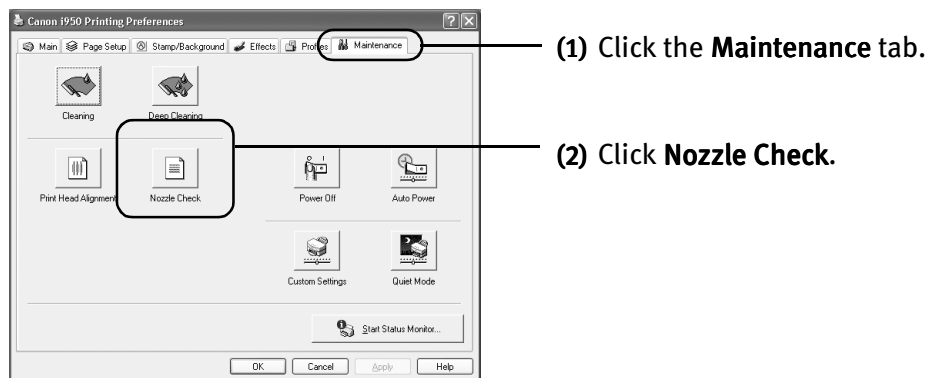
Windows

1 With the printer on, load a sheet of paper in the printer.

2 Open the Printer Properties dialog box.

See "Opening the Printer Properties Dialog Box Directly from the Start Menu" on page 22.

3 Print the Nozzle Check Pattern.



(3) When the confirmation message is displayed, click **OK**.

See "Examining the Nozzle Check Pattern" on page 39.

Macintosh

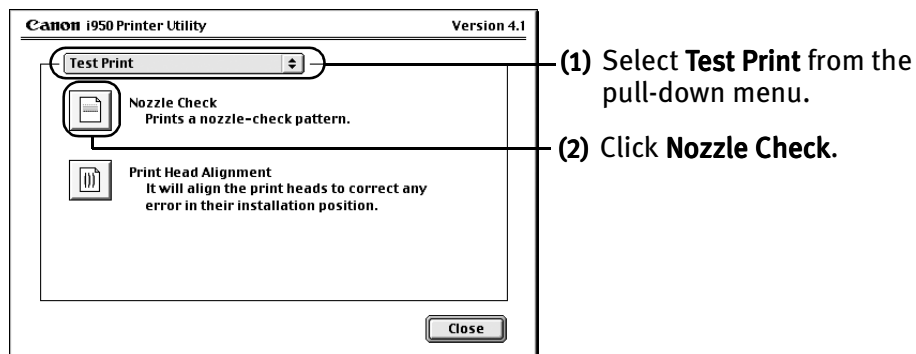
1 With the printer on, load a sheet of paper in the printer.

2 Open the Printer Utility dialog box.

(1) Select **Page Setup...** in the **File** menu.

(2) Click **Utilities** to open the **Printer Utility** dialog box.

3 Print the Nozzle Check Pattern.

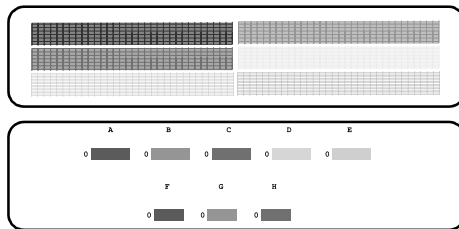


(3) When the confirmation message is displayed, click **OK**.

See "**Examining the Nozzle Check Pattern**" on page 39.

■ Examining the Nozzle Check Pattern

The nozzle check pattern should appear as follows when ink is discharged properly. Examine the nozzle check pattern output by the printer.



(1) Lines missing here indicate the print head requires cleaning.

See "**Print Head Cleaning**" on page 39.

(2) Unevenness in these patterns indicates that the print head requires alignment.

See "**Aligning the Print Head**" on page 44.

Print Head Cleaning

Clean the print head if you suspect that the nozzles might be clogged. Cleaning the print head consumes ink, so perform print head cleaning only when necessary.

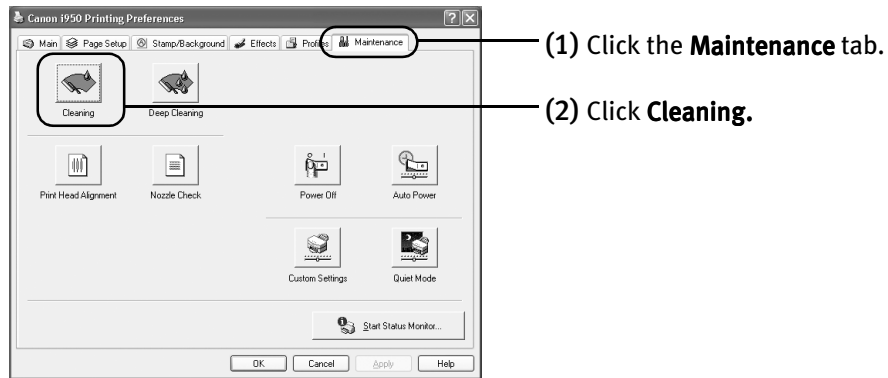
Windows

- 1 Ensure that the printer is on.
- 2 Open the Printer Properties dialog box.

See "**Opening the Printer Properties Dialog Box Directly from the Start Menu**" on page 22.

Printing Maintenance

3 Start Print Head Cleaning.



(3) Select the ink nozzles to be cleaned, and then click **Execute**.

All colors: All nozzles

Black: Black ink nozzle

Color: Color ink nozzles

(4) When the message is displayed, click **OK**.

Macintosh

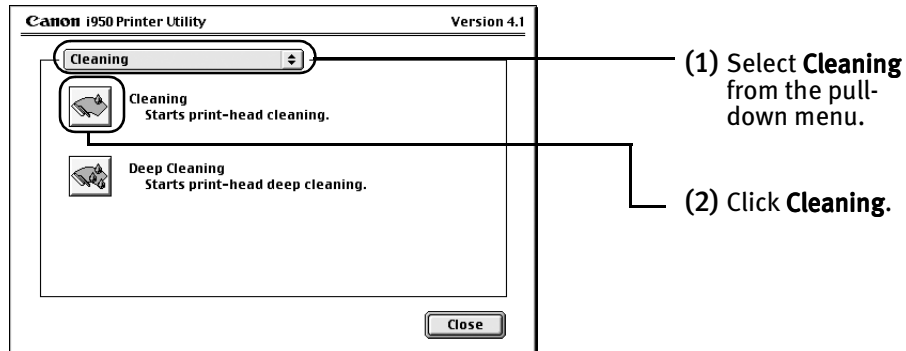
1 Ensure the printer is on.

2 Open the Printer Utility dialog box.

(1) Select **Page Setup...** in the **File** menu.

(2) Click **Utilities** to open the **Printer Utility** dialog box.

3 Start Print Head Cleaning.



(1) Select **Cleaning** from the pull-down menu.

(2) Click **Cleaning**.

(3) Select the ink nozzles to be cleaned, and click **OK**.

All colors: All nozzles

Black: Black ink nozzle

Color: Color ink nozzles

(4) When the message is displayed, click **OK**.

Important Do not perform any other operations until print head cleaning finishes. The cleaning process takes about 50 seconds.

- Note**
- Print head cleaning can be performed also from the printer itself. Ensure the printer is on. Hold down the **RESUME/CANCEL** button until the **POWER** lamp flashes once.
 - After print head cleaning finishes, print the nozzle check pattern to verify that the print head nozzles are clean.
- See "**Printing the Nozzle Check Pattern**" on page 37.

Print Head Deep Cleaning

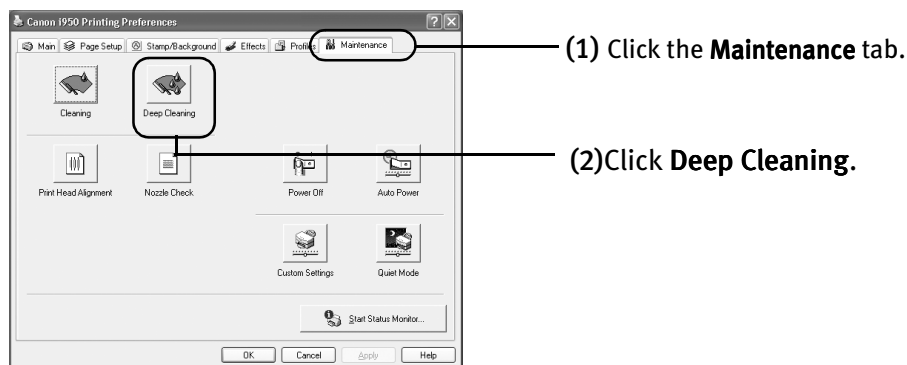
If the print quality does not improve by standard print head cleaning, try to perform print head deep cleaning, which is a more powerful process. Print head deep cleaning consumes ink, so perform this procedure only when necessary.

Windows

- 1 Ensure the printer is on.
- 2 Open the Printer Properties dialog box.

See "Opening the Printer Properties Dialog Box Directly from the Start Menu" on page 22.

- 3 Start Print Head Deep Cleaning.



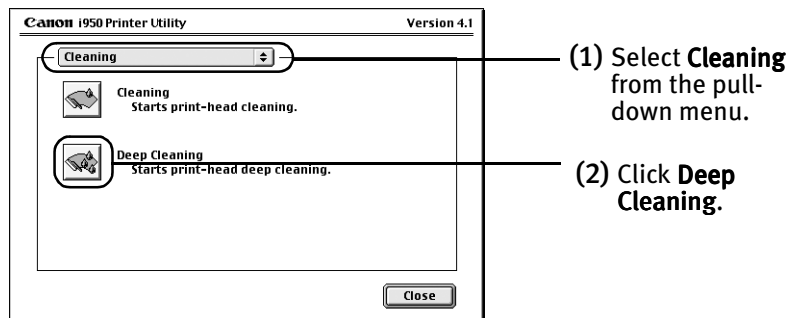
- (3) Select the ink nozzles to be cleaned, and then click **OK**.

All colors: All nozzles
Black: Black ink nozzle
Color: Color ink nozzles

- (4) When the message is displayed, click **OK**.

Macintosh

- 1 Ensure the printer is on.
- 2 Open the Printer Utility dialog box.
 - (1) Select **Page Setup...** in the **File** menu.
 - (2) Click **Utilities** to open the **Printer Utility** dialog box.
- 3 Start Print Head Deep Cleaning.



- (3) Select the ink nozzles to be cleaned, and then click **OK**.

All colors: All nozzles
Black: Black ink nozzle
Color: Color ink nozzles

- (4) When the message is displayed, click **OK**.

Important The process takes one or two minutes to complete, so simply wait until the **POWER** lamp stops flashing.

Note After print head deep cleaning finishes, print the nozzle check pattern to verify that the print head nozzles are clean.

See "**Printing the Nozzle Check Pattern**" on page 37.

If the print head is still not clean after you perform a deep cleaning, the print head may be worn out. In this event, contact the Customer Care Center.

Aligning the Print Head

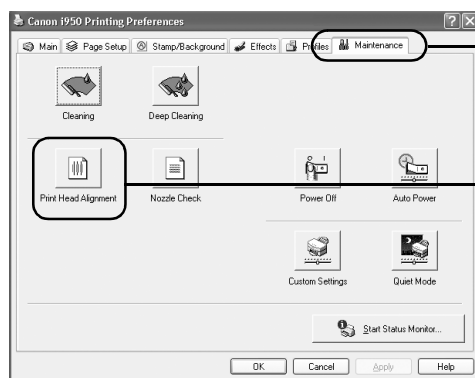
Windows

1 With the printer on, load a sheet of paper in the printer.

2 Open the Printer Properties dialog box.

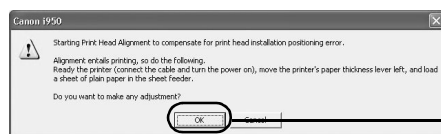
See "Opening the Printer Properties Dialog Box Directly from the Start Menu" on page 22.

3 Print the pattern.

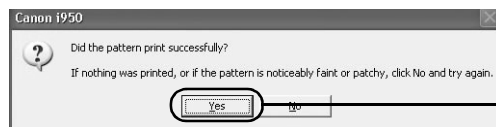


(1) Click the **Maintenance** tab.

(2) Click **Print Head Alignment**.



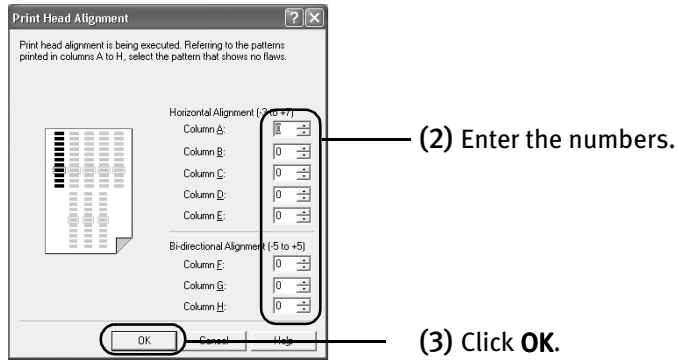
(3) When the confirmation message is displayed, click **OK**.



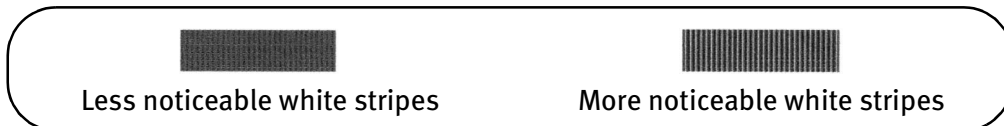
(4) After the pattern is printed, click **Yes**.

4 Align the Print Head.

- (1) Look at the printout. From the patterns, select the most even or the least irregular patterns and enter the numbers that corresponds to the patterns.



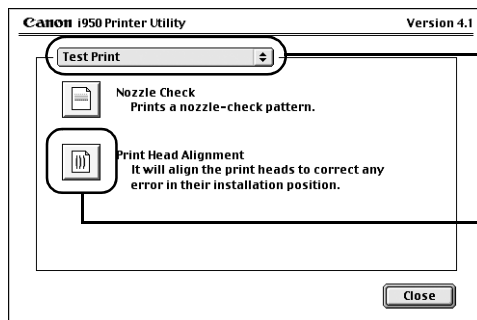
Note If it is difficult to pick up the best pattern on Column H, pick the setting that produces the least noticeable vertical white stripes.



Printing Maintenance

Macintosh

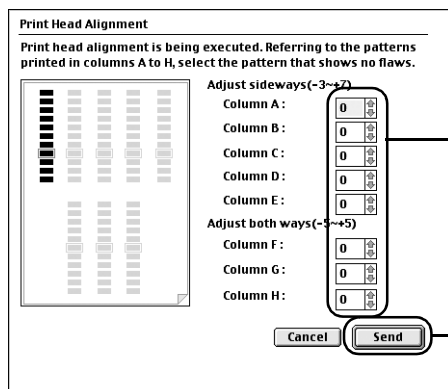
- 1 Ensure the printer is on.
- 2 Open the Print Utility dialog box.
 - (1) Select **Page Setup...** in the **File** menu.
 - (2) Click **Utilities** to open the **Printer Utility** dialog box.
- 3 Print the pattern.



- (1) Select **Test Print** from the pull-down menu.
- (2) Click **Print Head Alignment**.


4 Align the Print Head.

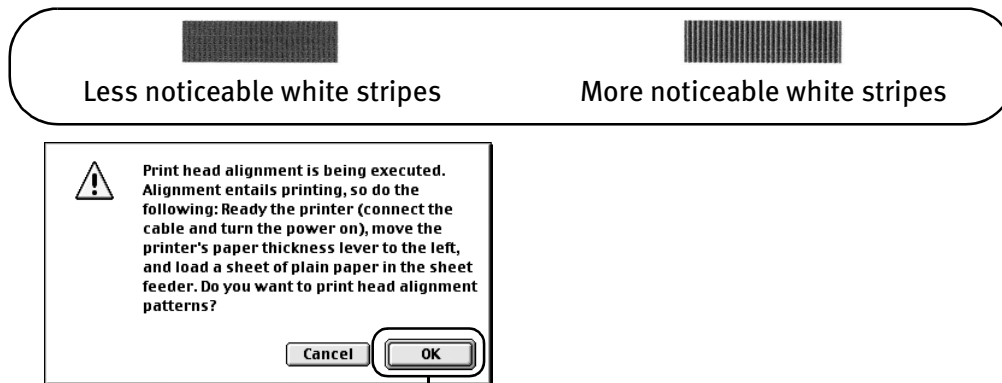
- (1) Look at the printout. From the patterns, select the most even or the least irregular patterns and enter the numbers that corresponds to the patterns.



- (2) Enter the numbers.

- (3) Click **Send**.

 **Note** If it is difficult to pick up the best pattern on Column H, pick the setting that produces the least noticeable vertical white stripes.



(4) Click **OK**.

Printing Maintenance

Troubleshooting

Troubleshooting usually falls into one of the following categories. In this chapter you will find the most common printing problems. Refer to the *User's Guide* for additional information on topics not covered in this section.

- "Cannot Install the Printer Driver" on page 50
- "Print Quality is Poor or Contains Errors" on page 51
- "Troubleshooting Printer Hardware" on page 53
- "Paper Does Not Feed Properly" on page 54
- "Handling Error Messages" on page 55
- "An Error Message Appears on the Screen" on page 56

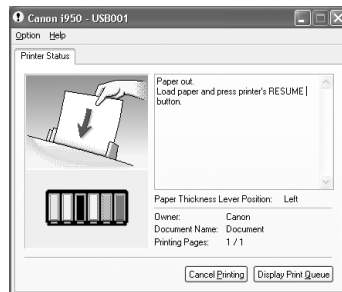


Note

Windows

When Error Occurs



The BJ Status Monitor opens and displays a message. Take the appropriate action described in the message. The message may vary depending on your operating system.



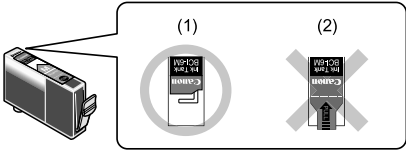


When using Windows Me or Windows 98, click the **Guide** tab and follow the on-screen instructions.

Troubleshooting

Cannot Install the Printer Driver

Problem	Possible Cause	Try This
Cannot Install the Printer Driver	Installation procedure not followed correctly	<p>Follow the installation instructions from the <i>Easy Setup Instructions</i> packaged with your printer.</p> <p>Windows  Note If the installer was forced to terminate due to an error, Windows may be unstable. Remove the CD-ROM from the CD-ROM drive, and restart the computer. Try reinstalling the printer driver.</p> <p>If the problem persists, refer to your Windows documentation for more information.</p>
	Other applications running in the background	Other applications opened on your computer can interfere with the installation routine. Close all opened software applications before reinstalling the printer driver. Refer to the <i>Easy Setup Instructions</i> for installing the printer driver.
	Installation does not start automatically when the CD-ROM is inserted into the drive	<p>Windows If printer driver installation did not start automatically when you insert the CD-ROM into the CD-ROM drive:</p> <ol style="list-style-type: none"> 1. Click Start and select My Computer. 2. Double-click the CD-ROM icon. <p>For non-XP Windows, open the My Computer window, and double-click the CD-ROM icon.</p> <p>Macintosh Double-click the CD-ROM icon on your desktop to start installation.</p>
	Installation CD-ROM not working properly	<p>Confirm that there are no problems with the <i>Setup Software & User's Guide CD-ROM</i>.</p> <p>Windows Use Windows Explorer to confirm that the CD-ROM can be read.</p> <p>Macintosh Confirm that the CD-ROM icon is displayed on the desktop.</p> <p>If there is any problem with the CD-ROM, contact the Customer Care Center.</p>
	Unable to proceed beyond the Printer Port screen	<p>Windows</p>  <p>Reinstall the printer driver</p> <ol style="list-style-type: none"> 1. Click Cancel. 2. When the Terminate Installation screen is displayed, click OK. 3. Click Exit, then remove the CD-ROM. 4. Turn the printer off. 5. Restart the computer. 6. Carefully follow the procedures described in the <i>Easy Setup Instructions</i> and reinstall the driver.



Print Quality is Poor or Contains Errors

Problem	Possible Cause	Try This
Ink does not eject properly/Printing is Blurred/ Colors are Wrong / White Streaks	Ink tank is not seated properly/Ink tank is empty	<p>Check that the ink tanks are firmly seated in the print head and reseal them if necessary.</p> <ul style="list-style-type: none"> Check to see if all the orange tapes have been peeled off as shown in (1). If there remains a part of the orange tape as shown in (2), remove it thoroughly.  <p>If an ink tank is empty: See "Replacing an Ink Tank" on page 31.</p>
	Media not loaded with the print-side up	<p>Check that your paper is loaded with the print side facing up.</p> <p> Note Follow the instructions packaged with your specialty media for loading and handling.</p>
	Incorrect paper type	<p>Windows On the Main tab, confirm that the Media Type selected matches the paper loaded.</p> <p>Macintosh In the Print dialog box, confirm that the Media Type selected matches the paper loaded.</p>
	Print head is misaligned	<p>Align the print head. See "Aligning the Print Head" on page 44.</p>
	Print head is clogged	<p>Print the nozzle check pattern to check for uneven ink output. When a specific color is missing from the nozzle check pattern, clean the print head. If ink supply is uneven: See "Print Head Cleaning" on page 39.</p> <p> Note The ink tank may be clogged with dust or air if the protective cap is replaced after the removal.</p>
	Print Quality not set properly	<p>Be sure to set the Print Quality setting to High.</p> <p>Windows On the Main tab, click High for the Print Quality setting.</p> <p>Macintosh 1. Select Manual in the Print Mode pull-down menu in the Print dialog box, and then click Details. 2. Click the Quality icon and then drag the Print Quality slide bar to the Fine end.</p>



Troubleshooting

Problem	Possible Cause	Try This
Printed Paper Curls or Ink Blots	Paper being used is too thin	Use High Resolution Paper or Photo Paper Pro to print images that require a lot of ink (i.e. pictures with intense colors or photographs).
	Color Intensity setting is too high	<p>Reduce the Intensity setting in the printer driver and try printing again.</p> <p>Windows</p> <ol style="list-style-type: none"> 1. Open the Printer Properties dialog box. 2. On the Main tab, select Manual for Color Adjustment, and then click Set. 3. Drag the Intensity slide bar to adjust the intensity. <p>Macintosh</p> <ol style="list-style-type: none"> 1. Open the Print dialog box. The Print dialog box can be opened by selecting Print in the File menu. 2. In the Print Mode pull-down menu, select Manual and then click Details. 3. Click the Color icon, then drag the Intensity slide bar to set the intensity.
	Paper feed roller is dirty	<p>Clean the paper feed roller.</p> <p>See "Paper Does Not Feed Properly" on page 54.</p>
Printed Surface is Scratched	Inappropriate paper type used	<p>Check to see if the paper you are printing on is too thick or curled.</p> <p>See "Print Media to Avoid" on page 4.</p> <p>Note that smudging may occur at the top and bottom edges of the paper when using Borderless Printing. Make sure that the paper you are using is compatible with Borderless Printing.</p> <p>See "Media Types Suitable for Borderless Printing" on page 14.</p>
	Incorrect position of the paper thickness lever	<p>When printing on thick paper, set the paper thickness lever to the "✉" mark.</p> <p>This widens the gap between the print head and the paper. If the paper is scratched even when printing on plain paper, also try this as well.</p>
Printed Output does not Match Screen	Color Adjustment for Driver Settings is not set properly	Select Manual for Color Adjustment , and set Color Balance or Enable ICM .

Troubleshooting Printer Hardware

Problem	Possible Cause	Try This
Printer Does Not Start or Printer Stops During Print Jobs	Print head has overheated due to long periods of continuous printing	<p>Stop printing and turn the printer off for at least 15 minutes to allow the print head to cool down.</p> <p>The print head tends to overheat when printing continues for a long period of time. The print head is designed to automatically pause at line breaks before resuming printing in order to cool down.</p> <p>Caution The area around the print head can become extremely hot during extended print operation. Always avoid touching the print head and its peripheral components.</p>
	Printing high-resolution photographs and graphics	<p>Wait until the print job finishes.</p> <p>The POWER lamp flashes green while the print data is being processed. Printing photographs and high-density graphics can take time.</p>
	Printer cable is too long	Avoid using USB cables longer than 9.8 feet.
	There may be problems in your operating system	<p>Restart your computer. It may solve the problem.</p> <p>Delete undesired print jobs if there is any. Use BJ Status Monitor in Windows, or BJ Print Monitor in Macintosh, for the deletion.</p> <p>Windows</p> <ol style="list-style-type: none"> 1. Open the Printer Properties dialog box. See "Opening the Printer Properties Dialog Box Directly from the Start Menu" on page 22. 2. Click Maintenance tab and then Start Status Monitor. 3. Click Display Print Queue. 4. Select Cancel All Documents in the Printer menu. Click Yes when a confirmation message appears. The print job is deleted. <p> Note In Windows Me or Windows 98 Click to select an undesired document and select Purge Print Documents in the Printer menu.</p> <p>Macintosh</p> <ol style="list-style-type: none"> 1. Double-click BJ Print Monitor in Extensions in the System Folder. 2. Click to select an undesired document and click . <p>The print job is deleted.</p>
Cannot Print to End of Job	Incorrect page size selected	<p>Verify that the page size setting matches the size of the paper loaded in the printer:</p> <ul style="list-style-type: none"> - Check the Paper Size setting from within your application to ensure that it matches the size of the paper loaded. - Check the Page Setup tab in the Printer Properties dialog box (for Windows), or the Page Setup dialog box (for Macintosh), to ensure that it matches the size of the paper loaded.
	Not enough free space on hard disk	<p>Your operating system may be out of free disk space. Check the available space on your computer's hard disk.</p>

Troubleshooting

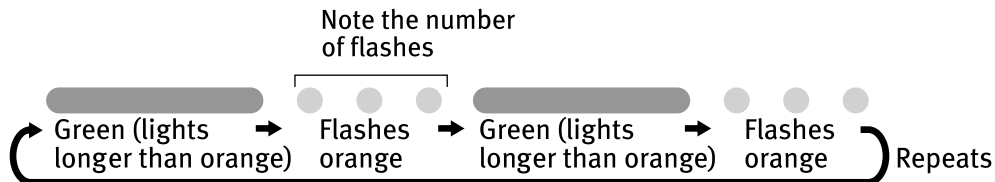
Cannot Print to End of Job (con't)	The size of the print data is too large	<p> Check the size of the print data. For Windows XP and Windows 2000, if the size of the data is too large, part of it may be lost. When the spool format is EMF, follow the procedure below.</p> <ol style="list-style-type: none"> 1 Open the Printer Properties Dialog Box. 2 On the Main tab, select Custom as the Print Quality setting, and click Set... 3 Click Reduce spool data size. <p> Note When Reduce spool data size is set, the print quality may be degraded.</p>
------------------------------------	---	---

Paper Does Not Feed Properly

Problem	Possible Cause	Try This
Paper Does Not Feed Properly	Inappropriate paper type used	Check to see if the paper you are printing on is too thick or curled. See " Print Media to Avoid " on page 4.
	Paper feed roller is dirty	<p>Follow the steps described below to clean the paper feed rollers.</p> <p>If envelopes or post cards do not feed properly, even after correcting any paper curl, clean the paper feed roller.</p> <ol style="list-style-type: none"> 1. Ensure the printer is on and there is no paper loaded in the printer. 2. Hold the RESUME/CANCEL button down and release after the POWER lamp flashes three times. The paper roller rotates as it cleans. Repeat this cleaning operation three times. 3. Load a sheet of plain paper in the printer. 4. Hold the RESUME/CANCEL button down and release after the POWER lamp flashes three times, then feed the sheet of paper. Repeat this operation three times. <p>If the printer still does not feed the envelopes or post cards properly into the printer even after the cleaning operation, repeat the procedures.</p>
	Paper Jams	<ol style="list-style-type: none"> 1. Gently pull the jammed paper out of the sheet feeder slot or the paper output slot, whichever is easier. <ul style="list-style-type: none"> • If the paper tears and some of it is left in the printer, turn the printer off, then open the front cover, and remove the piece of paper. Do not touch the internal parts in the printer. If you cannot reach or remove the torn paper, do not attempt to disassemble the printer yourself. Contact the Customer Care Center. • If you cannot extract the paper, turn the printer off, and then turn it back on. The remaining paper will be ejected automatically. 2. Close the front cover and reload the paper into the sheet feeder, then press the RESUME/CANCEL button on the printer.

Handling Error Messages








When a printer error occurs, the POWER/ERROR lamp flashes. The number of flashes indicate the type of error that has occurred. Count the flashes and take the appropriate action to correct the error.



Number of flashes	Possible Cause	Try This
Two flashes	Printer is out of paper	Reload paper and press the RESUME/CANCEL button.
Three flashes	Paper jam	If a paper jam occurs, clear the jammed paper, reload paper in the printer, then press the RESUME/CANCEL button. See " Paper Jams " on page 54.
Four flashes	Empty ink tank	Press the RESUME/CANCEL button to resume printing with an empty ink tank. Replace it with a new ink tank immediately after the printing. It may damage the printer if you continue printing with an empty ink tank. See " Replacing an Ink Tank " on page 31.
Six flashes	Print head not installed	Install the print head. If the print head is already installed, remove the print head and check the electrical contacts for foreign matter, then reinstall. After reinstall the print head, you may need to realign it.
Seven flashes	Defective print head	Remove the print head and check the electrical contacts for foreign matter, then reinstall it. If the print head fails to work properly after reinstalling it, contact the Customer Care Center.
Eight flashes	Waste ink tank almost full	The printer has a built-in waste ink tank to hold the ink consumed during print head cleaning. Eight flashes indicate that this tank is nearly full. Press the RESUME/CANCEL button to clear the error so printing can continue. Contact the Customer Care Center.
Note	POWER lamp flashes alternately in green and orange	Turn off and unplug the printer from the power supply. Then plug the printer back in and turn it back on. If the problem persists, contact the Customer Care Center.

Troubleshooting

An Error Message Appears on the Screen

Problem	Possible Cause	Try This
 Windows Error Writing / Output to USBnnn (or USBPRNnn)	Printer not ready	The power lamp flashes green when the printer is warming up, or when a print job is being sent to the printer. It glows a steady (non-flashing) green when it is ready for use or when the print job is completed.
	Paper is not loaded	Load paper and press the RESUME/CANCEL button.
	Faulty connection	Ensure the printer cable is securely connected to the computer.  Note If you are using a switching hub or other device, disconnect the printer and reconnect it directly to the computer and try printing again. If successful, the problem may have been with the device. There could also be a problem with the cable(s). Replace the cable(s) and try printing again.
	Printer driver is not installed properly	Uninstall then reinstall the printer driver. 1. Click Start , select All Programs (or Programs), Canon i950 , and Uninstall . 2. Follow the on-screen instructions to uninstall the driver. Follow the procedures described in the <i>Easy Setup Instructions</i> and reinstall the printer driver.
 Macintosh “Error No.: X202”	Not enough memory	Increase available memory by closing any other applications currently running.
 Macintosh “Error No.: X203”	Printer driver fault	The printer driver may not be installed correctly. Uninstall, then reinstall the printer driver. Refer to the <i>User’s Guide</i> for instructions on how to uninstall the printer driver.
 Macintosh “Error No.: X300”	Printer not ready	If the POWER lamp is off, turn the printer on. If the POWER lamp is flashing green, the printer is initializing. Wait until the POWER lamp stops flashing.
	Printer not properly connected	Ensure the printer is securely connected to the computer.  Note If you are using a switching hub or other device, disconnect the printer and reconnect it directly to the computer and try to print again. If successful, the problem may have been with the device. There could also be a problem with the cable(s). Replace the cable(s) and try printing again.
	Printer not selected in chooser	1. From the Apple menu, select Chooser . 2. Click the i950 icon and ensure i950 is selected as the target connection. If not, select it.  Note If the problem persists, delete all unnecessary documents from the Extensions and the Control Panels folder.

Appendix

User's Guide Table of Contents

Your printer's User's Guide offers detailed information on the following topics.

How to Use This Manual

Printer Parts and Their Function

Useful Printing Techniques

- Printing with Borderless Printing
- Reducing Noise from Images Recorded with Digital Camera
- Achieving Vivid Reproduction of Images with Lots of Greens and Blues
- Printing with Color and Brightness Automatically Optimized
- Adjusting Print Quality
- Smoothing the Rough Edges of Certain Images
- Automatically Resizing the Image to Fit the Page
- Resizing the Image by Selecting the Scaling Ratio
- Printing Multiple Pages on a Single Page
- Enlarge a Document by Printing it on Multiple Pages
- Printing Multiple Pages for Assembly into a Booklet
- Printing on Both Sides of the Page
- Printing Stamped Messages on Documents
- Printing Background Images on Documents
- Adding Illustrated Effect to Documents
- Printing Entire Image in Single Color
- Printing in Grayscale
- Reversing the Page Printing Order
- Printing on Nonstandard Size Paper
- Reducing the Sound of Printer Operation
- Registering Printer Driver Settings

Printing Media

- Compatible Media Types
- Envelopes
- High Resolution Paper

- Glossy Photo Paper
- High Gloss Photo Film
- Glossy Photo Cards
- Photo Paper Pro
- Photo Paper Pro Perforated
- Photo Paper Plus Glossy
- Matte Photo Paper
- Transparencies
- T-Shirt Transfers
- Banner Paper

Checking the Status of the Printer

- BJ Status Monitor Functions
- BJ Print Monitor

Troubleshooting

- Cannot Install Printer Driver
- Print Quality is Poor
- Printer Does Not Start or Stops During Print Jobs
- Paper Does Not Feed Properly or Paper Jams
- The POWER Lamp Flashes Orange
- An Error Message is Display on the Screen
- Problems Unique to Windows
- Problems Unique to Macintosh

Appendix

- Printing Area
- Using the Printer with a Network
- Uninstalling Printer Drivers
- Uninstalling the User's Guide
- Transporting Printer
- Printer Driver Functions (Windows)
- Printer Driver Functions (Macintosh)

Specifications

Printer

Printing resolution:	4800 × 1200 dpi. max. (Ink droplets can be placed with a pitch of 1/4800 inch at minimum)
Print speed *	Black printing Draft: 7 ppm Standard: 3.3 ppm Color printing Draft: 7 ppm Standard: 3.2 ppm Photo printing (PR-101 A4) High (Fine): 0.99 ppm
Print width:	203.2 mm max. (8.0 in) (for Borderless Printing: 216.0 mm/8.5 in)
Resident print control mode:	Canon extended mode
Receive buffer:	80 KB
Interface:	USB 2.0 Full Speed-Compatible
Acoustic noise level:	Approx. 37 dB (A) (In the highest print quality mode)
Operating environment:	Temperature: 5 to 35°C (41 to 95°F) Humidity: 10 to 90%RH (no condensation)
Storage environment:	Temperature: 0 to 40°C (32 to 104°F) Humidity: 5 to 95% RH (no condensation)
Power supply:	Europe AC 230 V ± 10%, 50 Hz USA/Canada AC 120 V, 60 Hz Australia AC 240 V, 50 Hz
Power consumption:	Standby: Approx. 2 W Printing: Approx. 24 W
Dimensions (with the paper rest and paper output tray retracted):	418(W) × 274(D) × 160(H) mm 16.46(W) × 10.79(D) × 6.30(H) in
Weight:	Approx. 4.8 kg (10.6 lb.)
Graphic image printing:	Data format: Canon extended mode: Raster image format Resolution: Canon extended mode: 600, 1200, 2400, 4800 dpi
Print Head:	512 nozzles of each color (1200 dpi)

Printer

Ink Tanks:

Capacity (pages):

Black (BCI-6BK) approx. 1000*1, approx. 760*2

Cyan (BCI-6C) approx. 750*2

Magenta (BCI-6M) approx. 620*2

Yellow (BCI-6Y) approx. 460*2

Photo Cyan (BCI-6PC) approx. 340*2

Photo Magenta (BCI-6PM) approx. 260*2

*1 1500 characters per page, normal text, at standard and plain paper mode with Windows XP

*2 Based on printing the ISO JIS-SCID No.5 pattern at standard and plain paper mode with Windows XP

BJ Printer Driver Systems Requirements

Windows

- Use a computer on which Windows XP, Windows 2000, Windows Me or Windows 98 can operate.
- USB* interface
- Available hard-disk space for printer driver installation
Windows XP/Windows 2000: 50MB
Windows Me/Windows 98: 15MB

* USB operation can only be guaranteed on a PC with pre-installed Windows XP, Windows 2000, Windows Me, or Windows 98. (This includes Windows XP, Windows 2000 or Windows Me upgraded from pre-installed Windows 98 or later)

Macintosh

- Use a Macintosh series computer equipped with USB interface on which Mac OS 8.6 or later can operate.
- 30MB of available hard-disk space for printer driver installation

Additional Systems Requirements for User's Guide

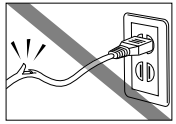
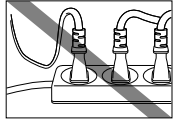
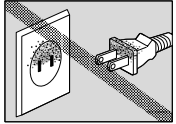

- Pentium®, 75 MHz equivalent or higher processor (Pentium®, 133MHz equivalent or higher processor recommended)
- 2x or higher CD-ROM drive (4x or higher recommended)
- 20 MB of available hard-disk space
- Microsoft Internet Explorer 5.0 or later

Appendix

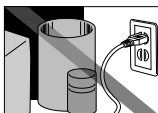
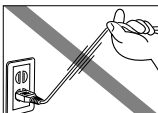

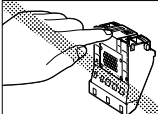
⚠ Safety Precautions

Please read the safety warnings and cautions provided in this manual to ensure that you use your printer safely. Do not attempt to use the printer in any way not described in this manual.

Warning You may cause an electric shock/fire, or damage the printer if you ignore any of these safety precautions.

Choosing a location	Do not place the printer close to flammable solvents such as alcohol or thinners.
Power supply	Never attempt to plug in or unplug the printer from the power supply when your hands are wet.
	Always push the plug all the way into the power outlet.
	Never damage, modify, stretch or excessively bend or twist the power cord. Do not place heavy objects on the power cord.
	
	Never plug the printer into a power socket that is shared with other equipment (extension lead/cord, 2- or 3- way adapter, etc.).
	
	Never use the printer if the power cord is bundled or knotted.
	If you detect smoke, unusual smells or strange noises around the printer, immediately unplug the printer at the power supply and call for service.
	Periodically, unplug the printer and use a dry cloth to wipe off any dust or dirt collected on the plug and the power outlet. If the printer is placed at a location exposed to a lot of dust, smoke, or high humidity, the dust that collects on the plug absorbs moisture and may cause insulation failure and fire.
	
Cleaning the printer	Use a damp cloth to clean the printer. Never use flammable solvents such as alcohol, benzene or thinners. If flammable solvents come in contact with electrical components inside the printer, it could cause a fire or electric shock.
	
	Always unplug the printer from the power outlet before cleaning the printer. If you accidentally switch the printer on while cleaning it, you could injure yourself or damage the printer.
Maintaining the printer	Do not attempt to disassemble or modify the printer. There are no user serviceable parts inside the printer. The printer contains high-voltage components. Never attempt any maintenance procedure not described in this guide.
Working around the printer	Do not use flammable sprays near the printer. This could cause a fire or electric shock if the spray comes into contact with the electrical components inside the printer.

Caution You may cause injury or damage the printer if you ignore any of these safety precautions.

Choosing a location	Do not install the printer in a location that is unstable or subject to excessive vibration.	
	Do not install the printer in locations that are very humid or dusty, in direct sunlight, outdoors, or close to a heating source. To avoid the risk of fire or electric shocks, install the printer in a location with an ambient temperature range of 5°C to 35°C (41°F to 95°F) and humidity of 10% to 90% (condensation free).	
	Do not place the printer on a thick rug or carpet.	
	Ensure that the area around the power outlet is kept clear at all times so you can easily unplug the power cord if necessary.	
	When moving the printer, carry the printer by holding both sides.	
Power supply	Never remove the plug by pulling on the cord.	
	Do not use an extension lead/ cord.	
	Never use a power supply voltage other than that supplied in the country of purchase. The correct power supply voltage and frequency is as follows: Europe: AC 230V ± 10M%, 50Hz USA/Canada: AC 120V, 60Hz Australia: AC 240V, 50Hz	
Working around the printer	Never put your hands or fingers in the printer while it is printing.	
	Do not place metal objects (paper clips, staples, etc.) or containers of flammable solvents (alcohol, thinners, etc.) on top of the printer.	
Print heads and ink tanks	For safety reasons store print heads and ink tanks out of the reach of small children. If a child ingests any ink, consult a doctor immediately.	
	Do not shake the print heads or ink tanks. Ink may leak out and stain clothing or the surrounding area.	
	Never touch the electrical contacts on a print head after printing. The metal parts may be very hot and could cause burns.	

Regulatory Information

Color Printer Model: K10221 (i950)

This device complies with Part 15 of the FCC Rules. Operation is subject to the following two conditions: (1) This device may not cause harmful interference, and (2) this device must accept any interference received, including interference that may cause undesired operation.

Note: This equipment has been tested and found to comply with the limits for a Class B digital device, pursuant to Part 15 of the FCC Rules. These limits are designed to provide reasonable protection against harmful interference in a residential installation. This equipment generates, uses and can radiate radio frequency energy and, if not installed and used in accordance with the instructions, may cause harmful interference to radio communications. However, there is no guarantee that interference will not occur in a particular installation. If this equipment does cause harmful interference to radio or television reception, which can be determined by turning the equipment off and on, the user is encouraged to try to correct the interference by one or more of the following measures:

- Reorient or relocate the receiving antenna.
- Increase the separation between the equipment and receiver.
- Connect the equipment into an outlet on a circuit different from that to which the receiver is connected.
- Consult the dealer or an experienced radio/TV technician for help.

Use of a shielded cable is required to comply with Class B limits in Subpart B of Part 15 of the FCC Rules.

Do not make any changes or modifications to the equipment unless otherwise specified in the manual. If such changes or modifications should be made, you could be required to stop operation of the equipment.

Canon U.S.A., Inc.
One Canon Plaza
Lake Success, NY 11042

Canadian Radio Interference Regulations

This digital apparatus does not exceed Class B limits for radio noise emissions from a digital apparatus as set out in the interference-causing equipment standard entitled "Digital Apparatus", ICES-003 of the Industry Canada.

Cet appareil numérique respecte les limites de bruits radioélectriques applicables aux appareils numériques de Classe B prescrites dans la norme sur le matériel brouilleur NMB-003 d'Industrie Canada intitulée « Appareils numériques ».

Canon Printer and Scanner Limited Warranty --- (USA Only)

The limited warranty set forth below is given by Canon U.S.A., Inc. ("Canon USA") with respect to the new or refurbished Canon-brand printer or scanner (each a "Product") packaged with this limited warranty, when purchased and used in the United States only.

The Product is warranted against defects in materials and workmanship under normal use and service (a) for a period of one (1) year from the date of original purchase when delivered to you in new condition in its original container or (b) for 90 days from the date of original purchase for refurbished Products. Defective parts or a defective Product returned to a Canon USA repair facility or a Canon USA Authorized Service Facility ("ASF"), and proven to be defective upon inspection, will be repaired, exchanged for new or comparable rebuilt parts, or exchanged for a refurbished Product, as determined by the Canon USA repair Facility or the ASF. Warranty repair or replacement shall not extend the original warranty period of the Product. This warranty does not cover any accessories, or any consumables, such as paper or ink cartridges, as to which there shall be no warranty or replacement.

This limited warranty shall only apply if the Product is used in conjunction with compatible computer equipment and software. Canon shall have no responsibility for such items except for compatible Canon brand peripheral equipment covered by a separate warranty ("Separate Warranty"). Repairs of such Canon brand peripheral equipment shall be governed by the terms of the Separate Warranty. **Non-Canon brand equipment and software that may be distributed with the Product are sold "as is" and without warranty of any kind by Canon USA, including any implied warranty regarding merchantability or fitness for a particular purpose, and all such warranties are disclaimed. The sole warranty, if any, with respect to such non-Canon brand items is given by the manufacturer or producer thereof.**

This limited warranty covers all defects encountered in normal use of the Product and does not apply in the following cases:

- (a) Loss of or damage to the Product due to abuse, neglect, mishandling, improper packaging by you, alteration, accident, electrical current fluctuations, improper use, failure to follow operating or maintenance instructions, or environmental conditions prescribed in Canon USA's user's manual or other documentation, or services performed by someone other than a Canon USA repair facility or its ASF. Without limiting the foregoing, dropping the Product, scratches, and abrasions will be presumed to have resulted from misuse, abuse or failure to operate the Product as set forth in the operating instructions.
- (b) Use of parts or supplies (other than those sold by Canon USA) that cause damage to the Product or cause abnormally frequent service calls or service problems.
- (c) If the Product has had its serial number or dating defaced, altered or removed.

ANY SYSTEM SOFTWARE (WHETHER FACTORY LOADED ON THE PRODUCT OR CONTAINED ON THE SOFTWARE DISKETTES OR CD-ROM'S ENCLOSED WITH, OR ACCOMPANYING, THE PRODUCT), AND ANY UTILITY SOFTWARE, DISTRIBUTED WITH OR FOR THE PRODUCT, IS SOLD "AS IS" AND WITHOUT WARRANTY BY CANON. THE SOLE WARRANTY WITH RESPECT TO SUCH SOFTWARE IS CONTAINED IN THE SOFTWARE MANUFACTURER'S LICENSE AGREEMENT DISTRIBUTED THEREWITH, INCLUDING ANY LIMITATIONS AND DISCLAIMERS THEREON. PLEASE CONTACT CANON IMMEDIATELY IF YOU HAVE NOT RECEIVED A COPY OF THE SOFTWARE MANUFACTURER'S LICENSE AGREEMENT.

NO IMPLIED WARRANTY, INCLUDING ANY IMPLIED WARRANTY OF MERCHANTABILITY OR FITNESS FOR A PARTICULAR PURPOSE, APPLIES TO THE PRODUCT AFTER THE APPLICABLE PERIOD OF THE EXPRESS LIMITED WARRANTY STATED ABOVE, AND NO OTHER EXPRESS WARRANTY OR GUARANTY, EXCEPT AS MENTIONED ABOVE, GIVEN BY ANY PERSON OR ENTITY WITH RESPECT TO THE PRODUCT SHALL BIND CANON USA, OR ITS ASF. (SOME STATES DO NOT ALLOW LIMITATIONS ON HOW LONG AN IMPLIED WARRANTY LASTS, SO THE ABOVE LIMITATION MAY NOT APPLY TO YOU.) CANON USA SHALL NOT BE LIABLE FOR LOSS OF REVENUES OR PROFITS, INCONVENIENCE, EXPENSE FOR SUBSTITUTE EQUIPMENT OR SERVICE, STORAGE CHARGES, LOSS OR CORRUPTION OF DATA, OR ANY OTHER SPECIAL, INCIDENTAL OR CONSEQUENTIAL DAMAGES CAUSED BY THE USE, MISUSE, OR INABILITY TO USE THE PRODUCT REGARDLESS OF THE LEGAL THEORY ON WHICH THE CLAIM IS BASED, AND EVEN IF CANON USA OR ITS ASF HAS BEEN ADVISED OF THE POSSIBILITY OF SUCH DAMAGES. NOR SHALL RECOVERY OF ANY KIND AGAINST CANON USA OR ITS ASF BE GREATER IN AMOUNT THAN THE PURCHASE PRICE OF THE PRODUCT CAUSING THE ALLEGED DAMAGE. WITHOUT LIMITING THE FOREGOING, YOU ASSUME ALL RISK AND LIABILITY FOR LOSS, DAMAGE OR INJURY TO YOU AND YOUR PROPERTY AND TO OTHERS AND THEIR PROPERTY ARISING OUT OF THE POSSESSION, USE, MISUSE, OR INABILITY TO USE THE PRODUCT SOLD BY CANON USA NOT CAUSED SOLELY AND DIRECTLY BY THE NEGLIGENCE OF CANON USA, OR ITS ASF. (SOME STATES DO NOT ALLOW THE EXCLUSION OR LIMITATION OF INCIDENTAL OR CONSEQUENTIAL DAMAGES, SO THE ABOVE EXCLUSION OR LIMITATION MAY NOT APPLY TO YOU.) THIS LIMITED WARRANTY SHALL NOT EXTEND TO ANYONE OTHER THAN THE ORIGINAL PURCHASER OF THE PRODUCT OR THE PERSON FOR WHOM IT WAS PURCHASED AS A GIFT, AND STATES YOUR EXCLUSIVE REMEDY.

Appendix

Canon offers a full range of customer technical support* options:

- For interactive troubleshooting, e-mail technical support, the latest driver downloads and answers to frequently asked questions (www.canontechsupport.com)
- Automated interactive telephone support on most current products 24 hours, 7 days a week (1-800-423-2366)
- 24-hour, Fax-On-Demand System for product specifications and technical information (1-800-526-4345)
- Free live technical support Monday—Saturday (excluding holidays) for products still under warranty (1-757-413-2848)
- The location of the ASF nearest you (1-800-423-2366, select "automated support options")

If the problem cannot be corrected by using one of the above technical support options, repair options are available at the time of your call to the Free live technical support number above or via the website at www.canontechsupport.com

This limited warranty gives you specific legal rights, and you may also have other rights, which vary from state to state.

* Support program specifics are subject to change without notice.

Canon U.S.A., Inc.
One Canon Plaza
Lake Success, NY 11042
USA

Canon is a registered trademark of Canon Inc.

Index

A

Adjusting Print Quality23
 Adjusting Print Thickness Lever 5, 52
 Advanced Print Features 13, 14, 17
 Aligning the Print Head44
 An Error Message Appears on the Screen56

B

Banner Paper 7
 BCI-6BK31
 BCI-6C31
 BCI-6M31
 BCI-6PC Photo31
 BCI-6PM Photo31
 BCI-6Y31
 BJ Print Monitor53
 BJ Status Monitor 32, 49, 53
 Borderless Printing 13, 14, 17, 30, 52
 Brilliant White Paper 7

C

Canceling Print Jobs 10, 12
 Canon Printer and Scanner Limited Warranty--- (USA Only)
63
 Chooser56
 Cleaning39
 Contacting the Customer Care Center
 36, 43, 50, 54, 55

D

Deep Cleaning42
 Driver
 saving settings 28, 29
 setting23
 uninstalling56

E

Easy-PhotoPrint 13, 14
 Easy-WebPrint13
 Examining the Nozzle Check Pattern39
 Exif Print 13, 14, 17

F

front cover 5

G

Glossy Photo Cards 7
 Glossy Photo Paper 7, 14, 17

H

Handling Error Messages55

High Gloss Photo Film7
 High Resolution Paper7

I

ImageBrowser 13, 17
 Ink tank31, 34, 51

M

Matte Photo Paper7, 14, 17
 Media
 Specialty 6, 7
 to avoid4
 types of 4, 7

N

Nozzle check pattern, examining 39
 Nozzle check pattern, printing 39

O

Opening the Printer Properties dialog box directly from the
 Start menu 22
 Opening the Printer Properties dialog box from your appli-
 cation program 21

P

Page Setup53
 Page Setup dialog box 53
 Paper feed roller 54
 Paper Jams 54
 Paper Size 11
 Paper Thickness Lever 5, 7, 52
 Photo Noise Reduction 27
 Photo Optimizer PRO 25
 Photo Paper Plus Glossy7, 14, 17
 Photo Paper Pro7, 14, 17
 PhotoRecord 13
 PhotoStitch 13
 POWER button 3
 POWER lamp 3, 31
 Print dialog box 51
 Print Head Alignment 44
 Print Head Cleaning 39
 Print Head Deep Cleaning 42
 print head holder 34
 Print Quality 10, 12, 23, 51
 Printer Properties dialog box 9, 52
 Printing the Nozzle Check Pattern 37

R

Replacing an Ink Tank 31
 RESUME/CANCEL button 10, 12

Index

S

Safety Precautions	60
Specifications	58

T

Tech support	64
Transparencies	7
Troubleshooting	49
T-Shirt Transfers	7
Turning Your Printer On	3

U

Uninstalling Printer Driver	56
-----------------------------------	----

V

Vivid Photo	26
-------------------	----

W

Warranty	63
When Printing Becomes Faint or Colors are Incorrect ...	36

Z

ZoomBrowser EX	13
----------------------	----