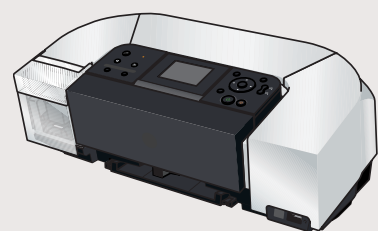


1 Unpack the Printer

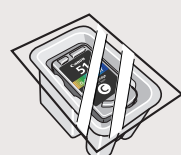
Carefully remove all items from the box.



PIXMA iP6220D Photo Printer



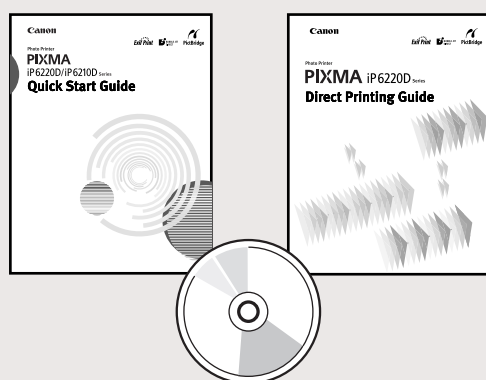
Power Cord



Color FINE Cartridge (CL-51)



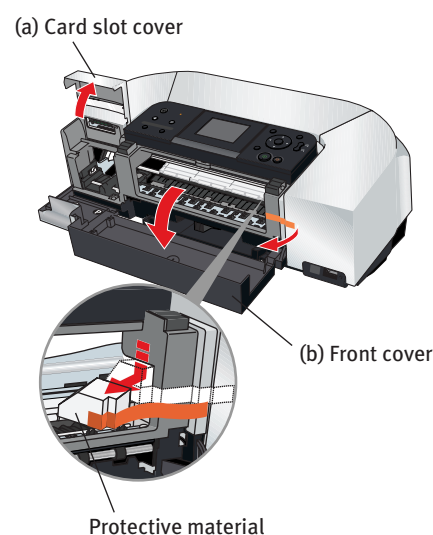
Photo FINE Cartridge (CL-52)



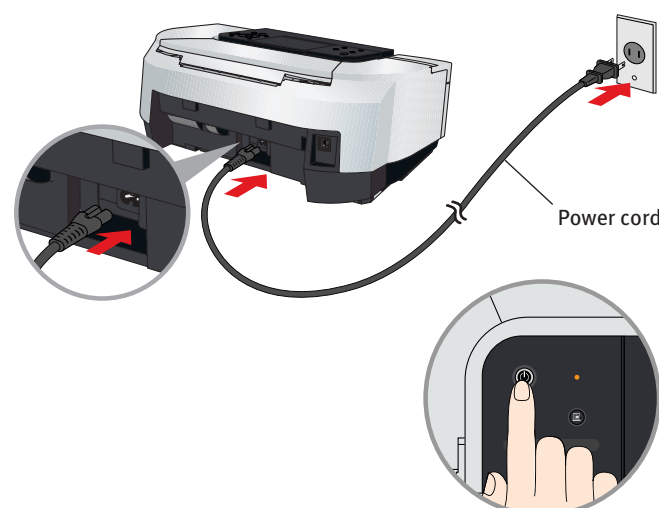
Documentation and Software Kit

2 Prepare the Printer

- 1 Remove the shipping tape from the front and back of the printer.
- 2 Open (a) the card slot cover first and (b) the front cover next. Pull down and remove the protective material on the right side.



- 3 Close the front cover first and the card slot cover next.
- 4 Plug the power cord into the back of the printer and connect the other end to a power outlet. Press the **POWER** button. The printer will initialize. Wait until the **POWER** lamp remains fully lit.

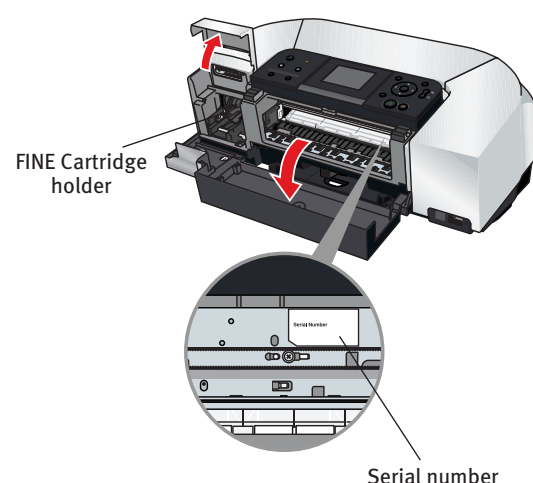


NOTE: Do not connect the USB cable at this stage.

- 5 When the screen appears on the LCD, confirm a language and then press the **OK** button.

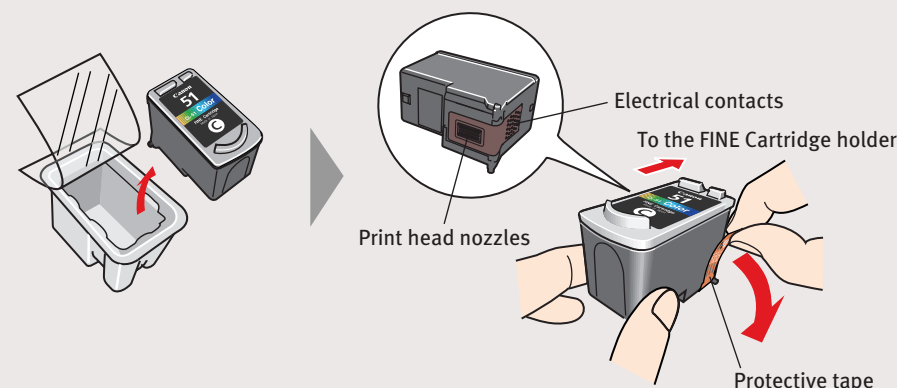
NOTE: If you leave the printer more than five minutes without using any button on the operation panel, the LCD goes into sleep mode automatically. Press the **OK** button to turn on the LCD again.

- 6 Open the card slot cover first and the front cover next. The FINE Cartridge holder automatically moves to the left. Write down the serial number. You will need this to register the product.



3 Install the FINE Cartridges

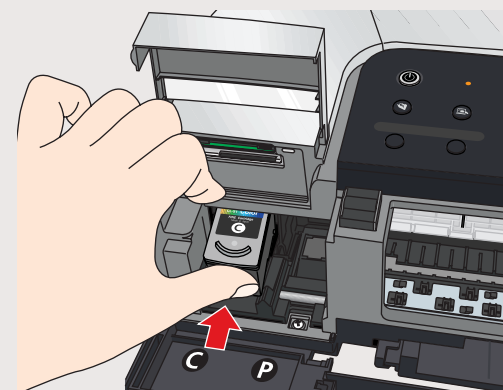
- 1 Take out the Color FINE Cartridge (CL-51) from its box and remove the protective tape gently.



NOTE:

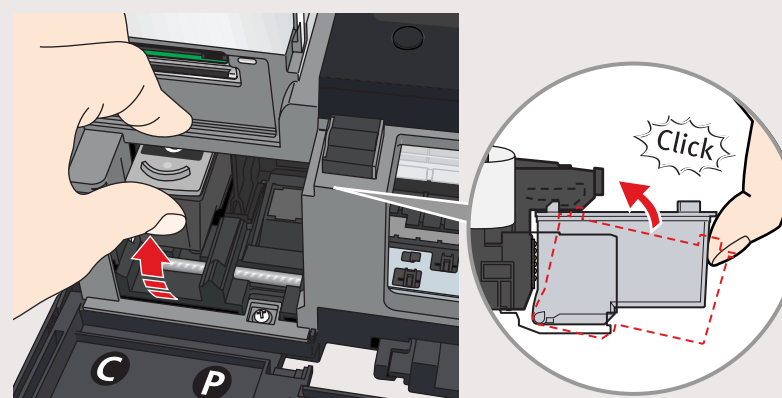
- Do not touch the electrical contacts or print head nozzles on a FINE Cartridge. The printer may not print out properly if you touch it.
- Do not reattach the protective tape once you have removed it.
- Handle the removed protective tape carefully to avoid getting your hands dirty or staining surrounding work area.

- 2 Insert the Color FINE Cartridge slightly slanted into the left slot (C).

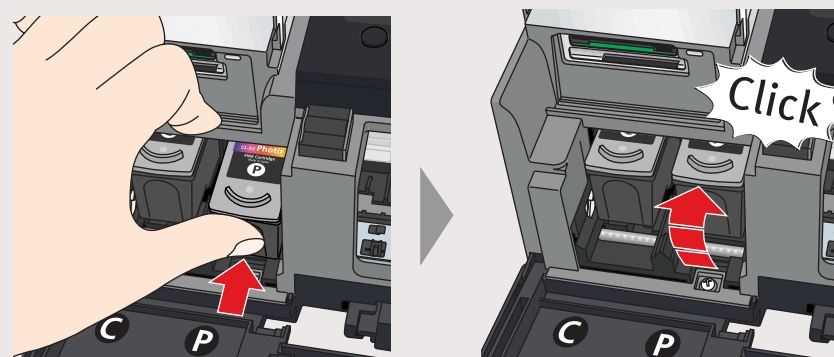


- 3 Push up the Color FINE Cartridge until it clicks into place.

IMPORTANT: For correct printer operation, make sure the FINE Cartridge is secure in slots.



- 4 Repeat the procedure for the Photo FINE Cartridge (CL-52), inserting it into the right slot (P).



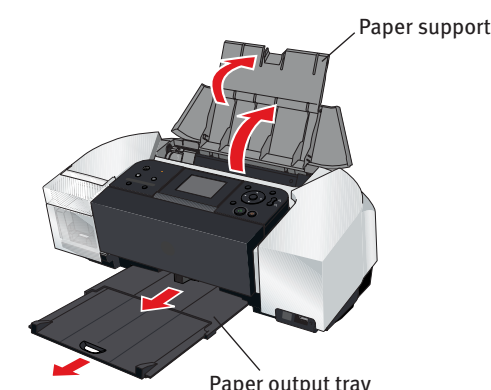
- 5 Close the front cover first and the card slot cover next.

IMPORTANT: Wait until the preparatory operation is complete; this takes about one to two minutes.

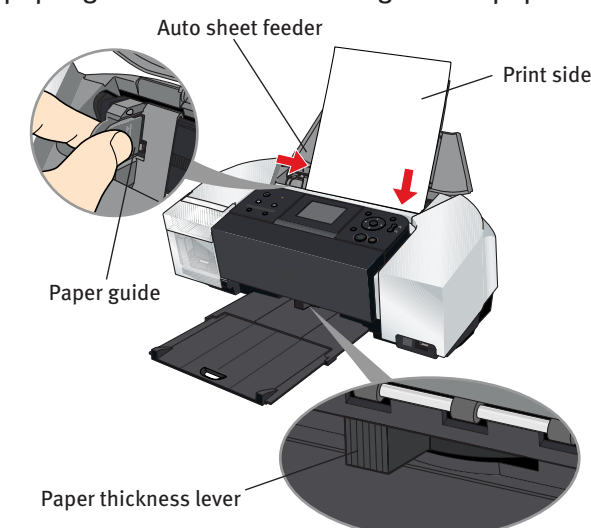
The message requesting head alignment is displayed on the LCD. Go to the next step.

4 Align the Print Head (FINE Cartridge)

- 1 Open the paper support and pull out the paper output tray.

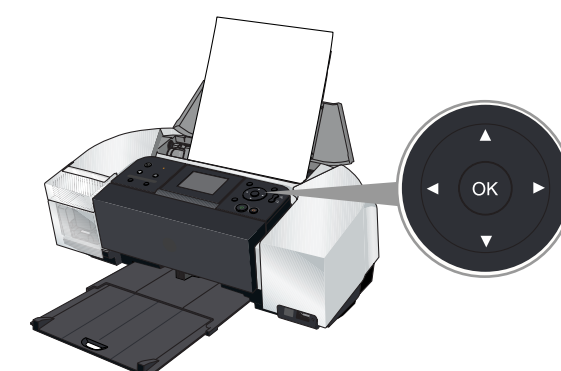


- 2 Pinch the paper guide and slide it to the left. Load a few sheets of blank paper into the auto sheet feeder, then slide the paper guide toward the left edge of the paper.



NOTE: Ensure that the paper thickness lever is set to the left position.

- 3 Ensure that the message requesting head alignment is displayed on the LCD, select **Yes** using the **▲▼** buttons and then press the **OK** button.



The pattern is printed. And the print head is aligned automatically.

IMPORTANT: It takes about four minutes to finish printing.

When automatic print head alignment can not be executed correctly, the message "Auto Head Align has failed. Press [OK] and repeat operation. <See manual>" is displayed on the LCD. refer to "An Error Message is Displayed on the LCD" in the *Direct Printing Guide*.

Continue with Step 5 on side two.



5 Windows® Printer Driver Installation

Windows

The screens below refer to Windows XP Service Pack 2 installation. Screens may differ depending on the operating system you are using.

1 TURN THE PRINTER OFF.

You hear the operation sound until the printer is turned off. It may take about 20 seconds.

2 Turn the computer on and start Windows.

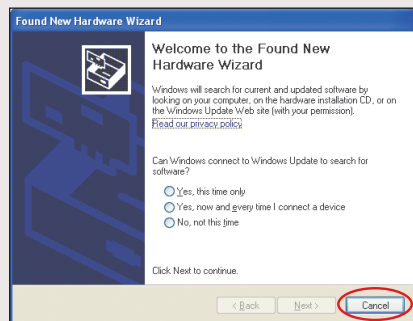


NOTE:

- Before installing the driver, disable all anti-virus programs and automatically loading programs.
- For Windows XP or Windows 2000, log on to Windows as a member of **Administrators** group before continuing.
- Do not switch users during the installation process.

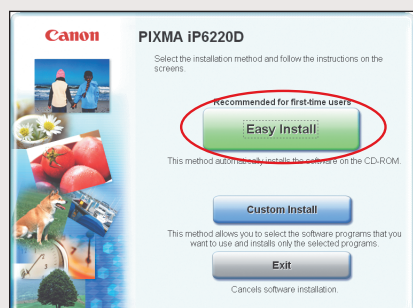


IMPORTANT: If you see the Found New Hardware Wizard, click **Cancel**. Next, remove the USB cable connected to your computer. Then proceed from step 3 to install the printer driver.



3 Insert the *Setup Software & User's Guide* CD-ROM. The setup program should run automatically.

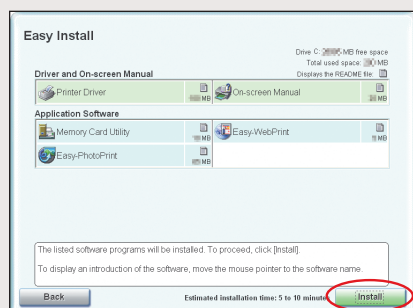
4 When the main menu screen appears, click **Easy Install** and follow the on-screen instructions.



NOTE:

- Select **Easy Install** in order to install application software, on-screen manual, utility and printer drivers. Select **Custom Install** in order to choose the options you would like to install.
- To install PhotoRecord, click **Custom Install** and follow the instruction on the screen.

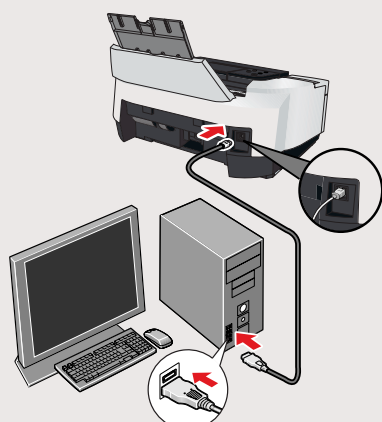
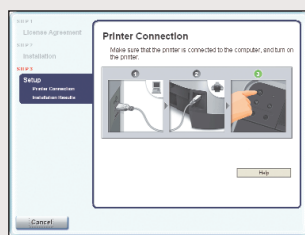
5 When the **Easy Install** screen appears, click **Install**.



NOTE: Move the cursor over items to display explanations of each application below.

6 Read the **License Agreement**, then click **Yes**. Installation of the printer driver, on-screen manuals, and applications will begin. Follow the instructions displayed on the screen. If the message asking for your confirmation to restart your computer appears, click **OK**. The system is restarted automatically.

7 When the **Printer Connection** screen appears, connect the USB cable to the computer and the other end to the printer.



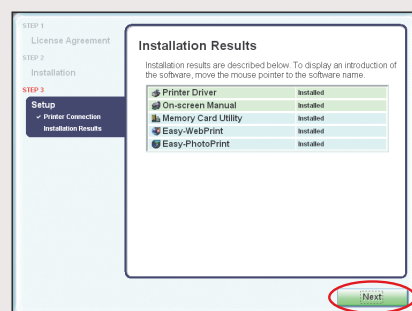
8 TURN THE PRINTER ON.



IMPORTANT: If you cannot proceed to the next procedure after two minutes, refer to "Troubleshooting" instructions in the *Quick Start Guide*.

If the message asking for your confirmation to restart your computer appears, click **OK**. The system is restarted automatically.

9 Follow the on-screen instructions to install the remaining software. When the **Installation Results** screen appears, click **Next**.



10 Follow the on-screen instructions to register your product.

11 When the **Installation completed successfully** screen appears, click **Exit**. If **Restart** is displayed, ensure the **Restart the system now (recommended)** check box is selected, then click **Restart**.



5 Macintosh® Printer Driver Installation

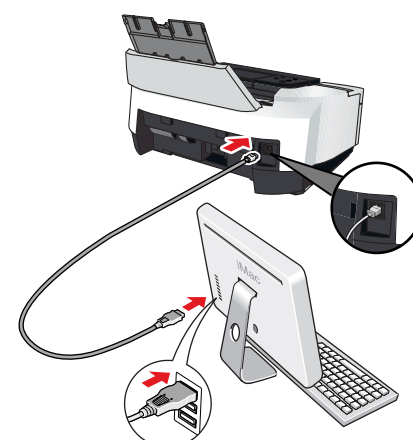
Macintosh



NOTE:

- Before installing the driver, disable all anti-virus programs and automatically loading programs.
- Use Mac®OS X v.10.2.1 to 10.3.x.
- The screens below refer to Mac OS X v.10.3.x installation. Screens may differ depending on the operating system you are using.
- Do not remove or insert the USB cable during installation, as this may result in the computer or printer not operating normally.

1 Connect the end of the USB cable to the computer, the other to the printer.



2 Turn on your Mac OS X.

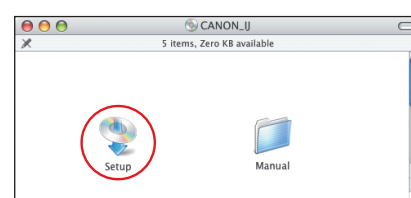
3 Insert the *Setup Software & User's Guide* CD-ROM.



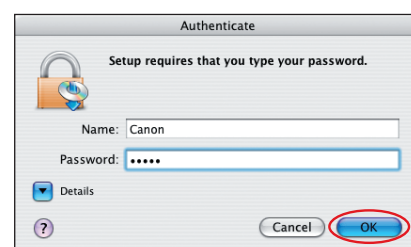
NOTE:

- If the **CD-ROM** folder does not open automatically, double-click the **CD-ROM** icon on the desktop.
- Log on as an **Administrator** before continuing.

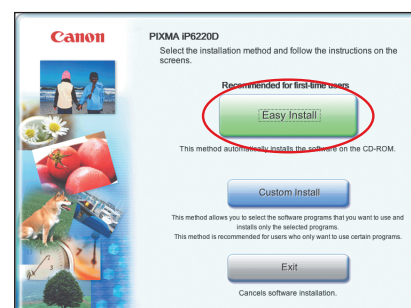
4 Double-click the **Setup** icon.



5 When the **Authenticate** screen appears, enter your administrator name and password. Click **OK**. If you do not know your administrator name or password, click **?**, then follow the on-screen instructions.



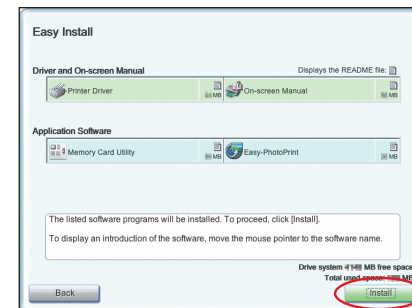
6 When the main menu screen appears, click **Easy Install** and follow on-screen instructions.



NOTE:

Select **Easy Install** in order to install application software, on-screen manual, utility and printer drivers. Select **Custom Install** in order to choose the options you would like to install.

7 When the **Easy Install** screen appears, click **Install**.



NOTE: Move the cursor over items to display explanations of each application below.

8 Read the **License Agreement**, then click **Yes**. Installation of the printer driver, on-screen manuals and applications will begin. Follow the instructions displayed on-screen.

9 Follow the on-screen instructions to register your product.

10 When the **Installation completed successfully** screen appears, click **Restart**.



11 After restarting the computer, select **Applications** from the **Go** menu. Double-click the **Utilities** folder, and then double-click the **Printer Setup Utility (Print Center)** when you use Mac OS X v.10.2.x) icon. Check that your printer name is displayed on the **Printer List**. If your printer name is not displayed on the **Printer List**, click **Add** to add the printer. For details, refer to the Printer Setup Utility Help or Mac Help.