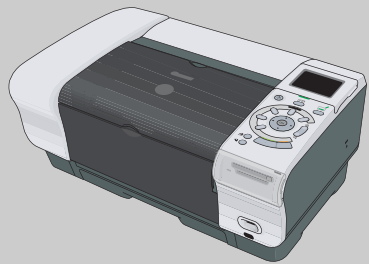
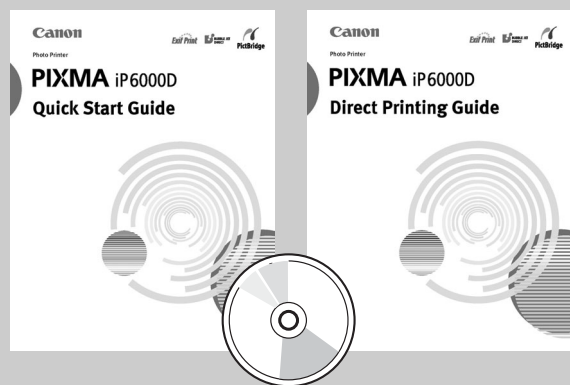


1 Unpack the Printer

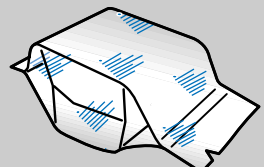
- Carefully remove all items from the box.



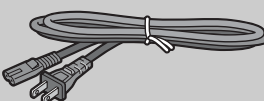
PIXMA iP6000D Series
Photo Printer



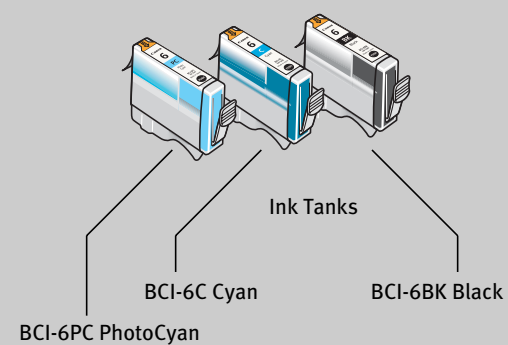
Documentation
and Software Kit



PIXMA iP6000D Series
Print Head



Power Cord

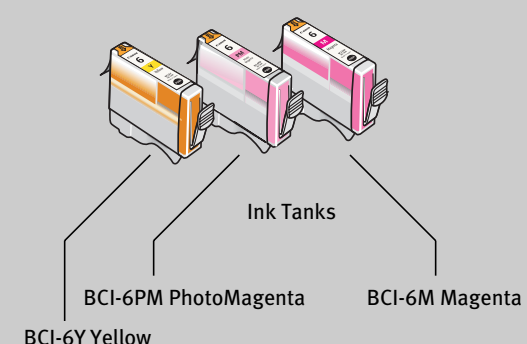


Ink Tanks

BCI-6PC PhotoCyan

BCI-6C Cyan

BCI-6BK Black



Ink Tanks

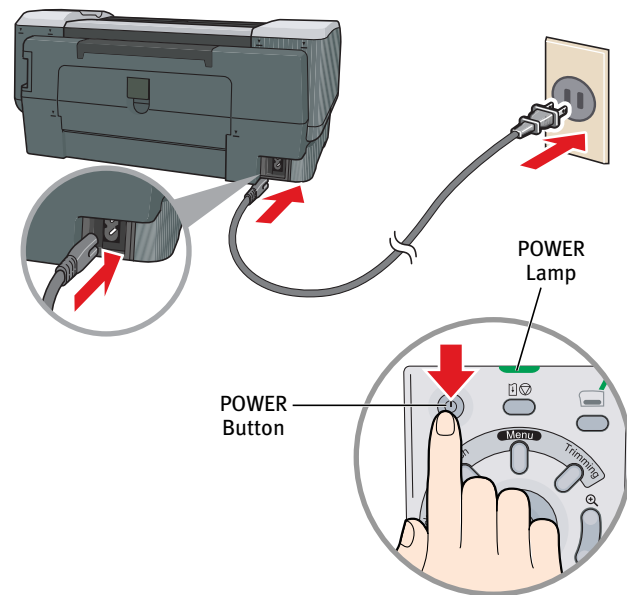
BCI-6PM PhotoMagenta

BCI-6M Magenta

BCI-6Y Yellow

2 Prepare the Printer

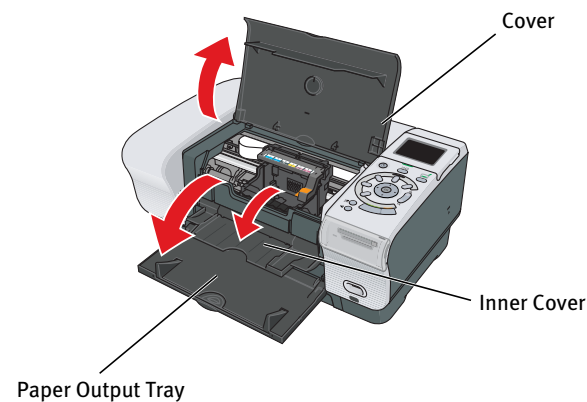
- Remove the shipping tape from the front and back of the printer.
- Plug the power cord into the back of the printer and connect the other end to a power outlet. Press the POWER button. The printer will initialize.



POWER
Button

POWER
Lamp

- Lower the paper output tray. Raise the cover. Lower the inner cover.

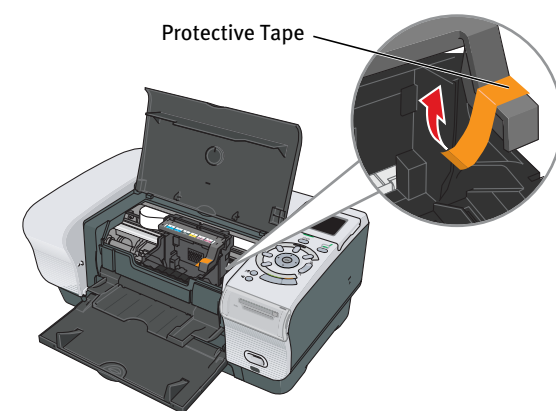


Cover

Inner Cover

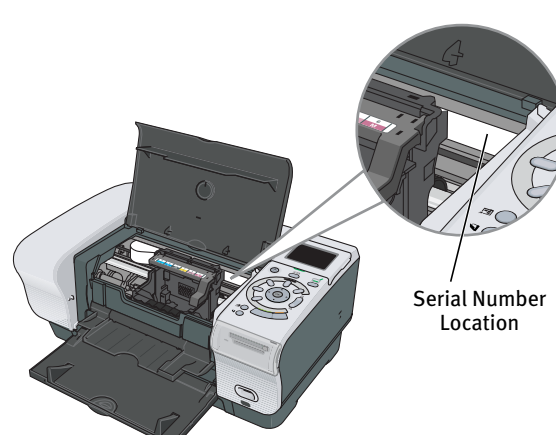
Paper Output Tray

- The print head holder automatically moves to the center. Remove the protective tape.



Protective Tape

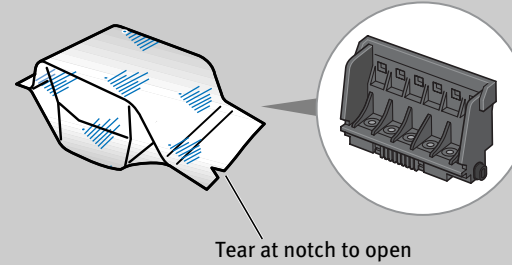
- Write down the serial number located to the right of the print head holder. You will need this later to register the product.



Serial Number
Location

3 Install the Print Head

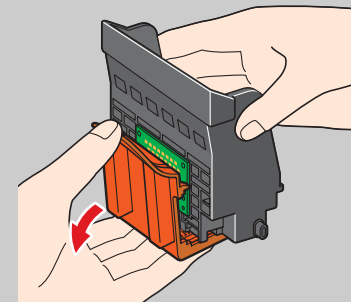
- Remove the print head from its package.



Tear at notch to open

- Remove the orange protective cap from the print head.

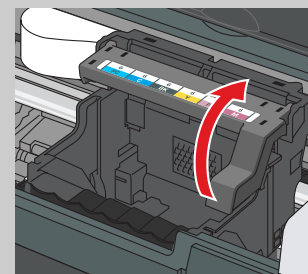
NOTE: Do not touch the print head nozzles and the electrical contacts.



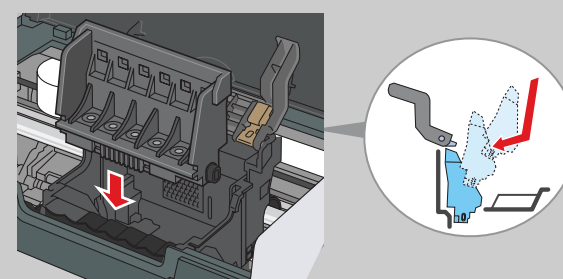
Print Head Nozzles

Electrical Contacts

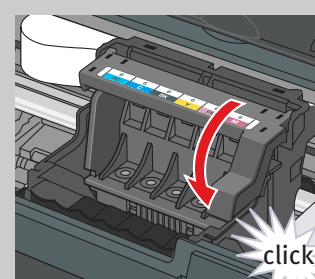
- Raise the print head lock lever.



- Slide the print head into the holder. The print head will rest at a slight angle.

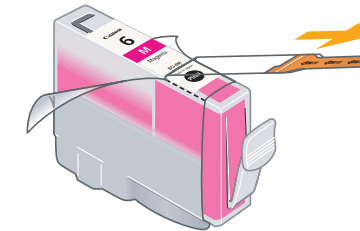


- Lower the print head lock lever and press it down until it clicks into place.



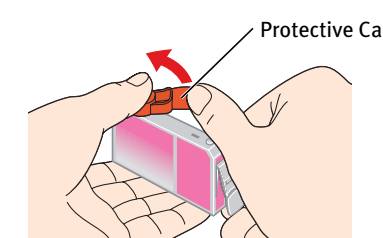
4 Install the Ink Tanks

- Peel back the orange tab and completely remove the plastic wrapper from the Magenta Ink Tank (BCI-6M).



- Twist off and discard the orange protective cap.

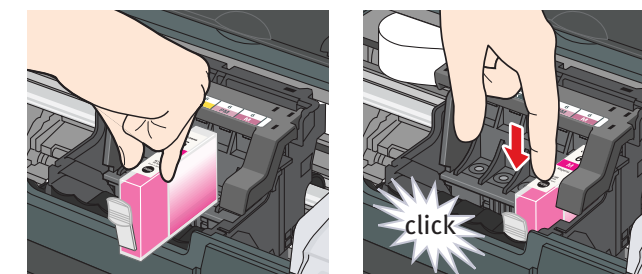
NOTE: To avoid spilling ink, never press on the sides of an ink tank.



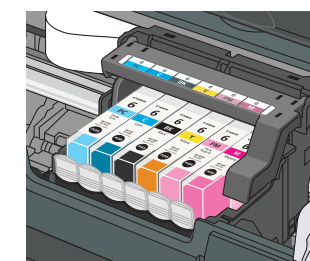
Protective Cap

- Insert the ink tank into the correct slot. (Refer to the color guide on the print head lock lever).

Press down until the ink tank clicks into place.



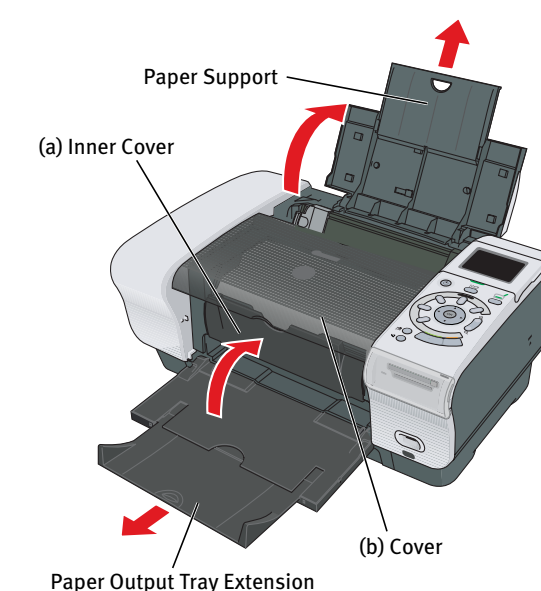
- Insert the remaining five ink tanks into their assigned slots.



- Close (a) the inner cover, and then (b) the cover. Lift open the paper support.

IMPORTANT: Be sure to close the inner cover completely, or the paper will not feed properly.

- Extend the paper support and paper output tray extension.



Paper Support

(a) Inner Cover

Paper Output Tray Extension

(b) Cover

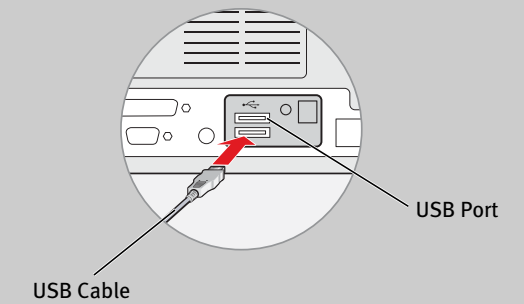
NOTE: The printer will perform a print head cleaning. Wait until the POWER lamp displays a steady green light before proceeding.

5 Connect the Printer and Load Paper

IMPORTANT: Be sure the printer is off before continuing, or the computer will attempt to install the printer driver before the printer is ready.

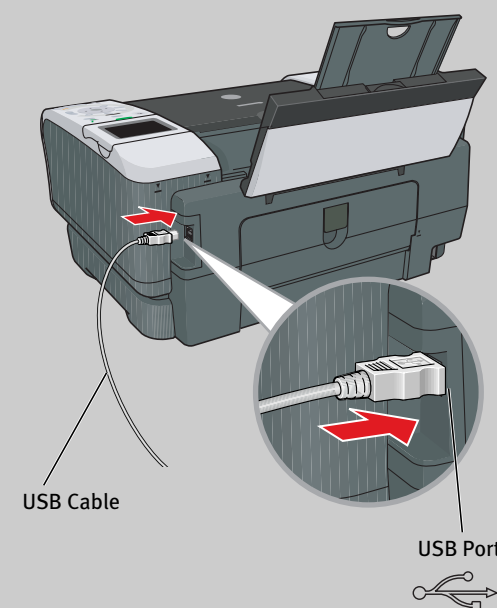
- TURN THE PRINTER OFF.

- Connect one end of the USB cable to the computer, the other to the printer.



USB Cable

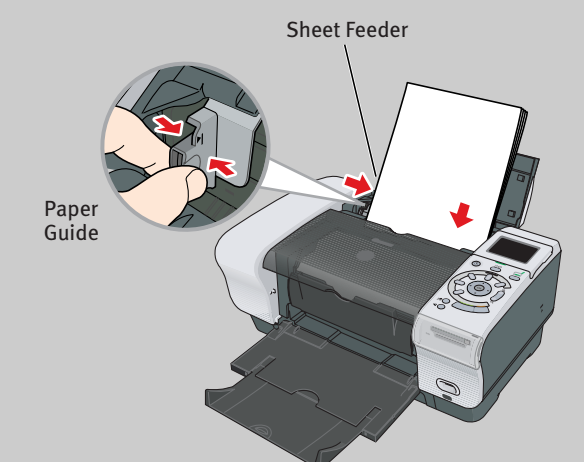
USB Port



USB Cable

USB Port

- Remove the shipping tape from the paper guide. Pinch the paper guide and slide it to the left. Load a few sheets of blank paper into the sheet feeder, then slide the paper guide toward the left edge of the paper.



Paper Guide

Sheet Feeder

IMPORTANT: Print Head Alignment (Step 6) requires that 8.5"x11" paper is loaded in the sheet feeder (top paper feeder).

Continue with Step 6
on side two.

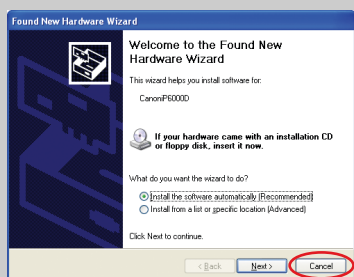


6 Windows® Printer Driver Installation and Print Head Alignment

- 1 Be sure to **TURN THE PRINTER OFF** before continuing.

NOTE: For Windows® XP or Windows 2000, log on to Windows as a member of the Administrators group before continuing.

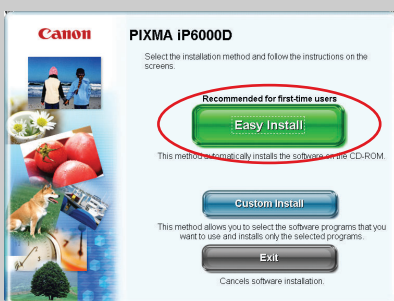
IMPORTANT: If you see the Found New Hardware Wizard, click **Cancel**.



- 2 Close any open software applications including anti-virus, computer security and other software. Then insert the Setup Software & User's Guide CD-ROM. The setup program should run automatically.

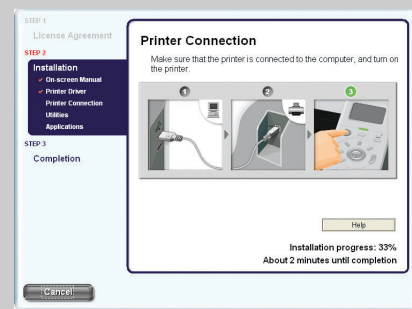
NOTE: If the setup program does not run, click **Start**, then **Run**, then type **D:\msetup.exe**, where **D** is your CD-ROM drive.

- 3 When the main menu appears, click **Easy Install** and follow on-screen instructions.



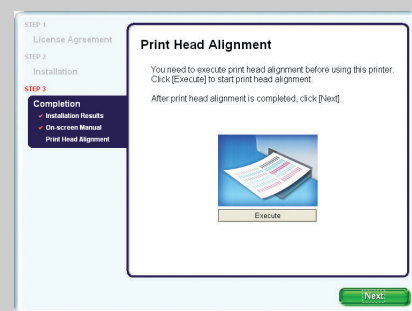
NOTE: Select **Easy Install** in order to install all of the application software, electronic manual and printer driver. Select **Custom Install** in order to choose the options you would like to install.

- 4 When the "Printer Connection" window appears, **TURN THE PRINTER ON**. The software will begin identifying the printer port being used.



IMPORTANT: If your computer cannot detect a printer port, click **Help** and refer to the online instructions.

- 5 Follow the on-screen instructions to install the remaining software. When the "Installation Results" window appears, click **OK**.
- 6 Follow the on-screen instructions to register your product.
- 7 When the "Print Head Alignment" screen appears, ensure that letter size paper is loaded in the sheet feeder (top paper feeder). Click **Execute** and follow on-screen instructions.



NOTE: Print head alignment will take several minutes to complete.

- 8 When the "Installation completed successfully" screen appears, click **Exit**.

NOTE: When **Restart** is displayed, ensure the **Restart the system now (recommended)** check box is selected, then click **Restart**.

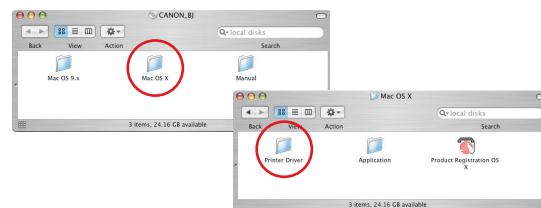
6 Macintosh® Printer Driver/Memory Card Utility Installation and Print Head Alignment

NOTE: For Mac OS 9.x printer driver instructions, refer to the "Appendix" of the *Quick Start Guide*.

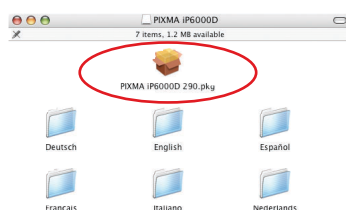
- 1 Turn on your Mac and your printer and insert the "Setup Software & User's Guide" CD-ROM.

NOTE: Log on as an Administrator before continuing.

- 2 Double-click the CD-ROM icon, then the **Mac OS X** folder, then the **Printer Driver** folder.



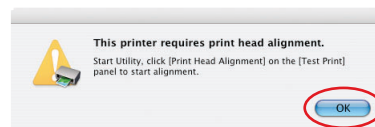
- 3 Double-click the **PIXMA iP6000D 290.pkg** icon, then follow the on-screen instructions.



NOTE: When the "Authenticate" screen appears, enter your administrator name and password. If you do not know your administrator name or password, click **?**, then follow the on-screen instructions.

- 4 When the message "The software was successfully installed" appears, click **Restart**.

- 5 When a message asking you to align the print head appears, click **OK**.

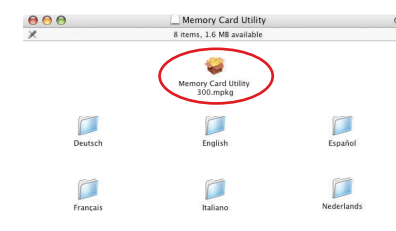


NOTE: Ensure that the printer is added on the **Printer List** with **Printer Setup Utility (Print Center)** when using Mac OS X v.10.2.x). If not, add the printer on the list. For more information about the operations, refer to the Mac Help.

- 6 Install the memory card utility.

a. Double-click the **Memory Card Utility** folder in the **Mac OS X** folder on the CD-ROM.

b. Double-click the **Memory Card Utility 300.mpkg** icon, then follow the on-screen instructions.



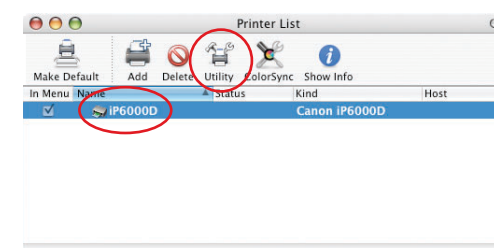
NOTE: When the "Authenticate" screen appears, enter your administrator name and password. If you do not know your administrator name or password, click **?**, then follow the on-screen instructions.

c. When the message "The software was successfully installed" appears, click **Restart**.

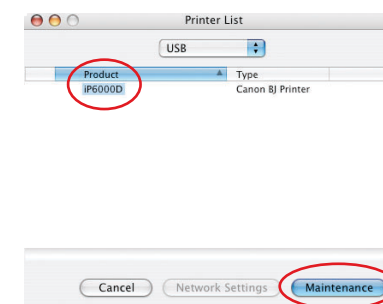
- 7 Start the print head alignment procedure.

a. Double-click the **Macintosh HD** icon, then **Applications** folder. Double-click the **Utilities** folder, then the **Printer Setup Utility** icon.

b. When the **Printer List** screen appears, select **iP6000D**, then click the **Utility** icon.

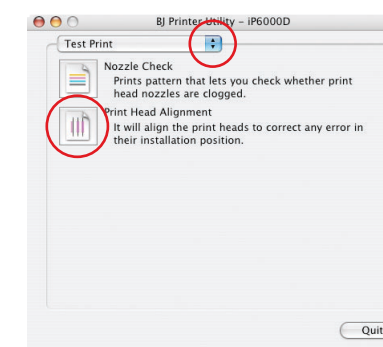


c. Select **iP6000D** and click **Maintenance**.



d. Ensure that letter size paper is loaded in the sheet feeder (top paper feeder).

e. Click the down-arrow to select **Test Print**. Click the **Print Head Alignment** icon and follow the on-screen instructions.



NOTE: Print head alignment will take several minutes to complete.

- 8 Click **Quit** to exit the BJ Printer Utility. Print head alignment is now complete.

- 9 Access your CD-ROM again. From the **Application** folder on the CD-ROM, double-click on the software to be installed.

- 10 Follow the on-screen instructions. When the "Installation is completed" screen appears, click **OK**.

- 11 Double-click on the **Product Registration** icon, found in the **Mac OS X** folder, to register your product.

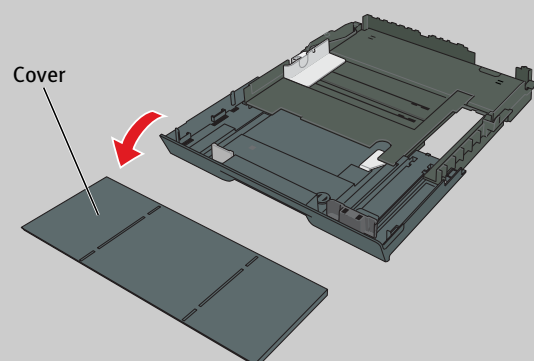
7 Cassette Loading

NOTE: Loading paper in the cassette provides additional paper handling flexibility. For additional information, visit the electronic *User's Guide*.

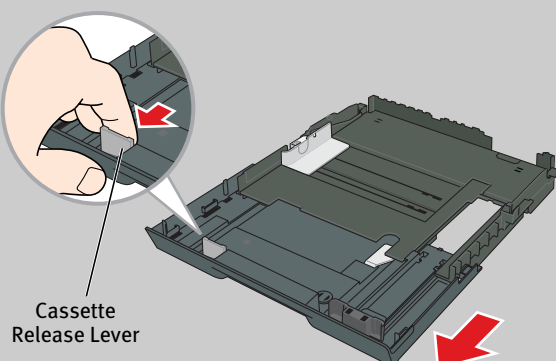
- 1 Push in the paper output tray extension and close the paper output tray.
- 2 Pull out the cassette from the bottom of the printer.



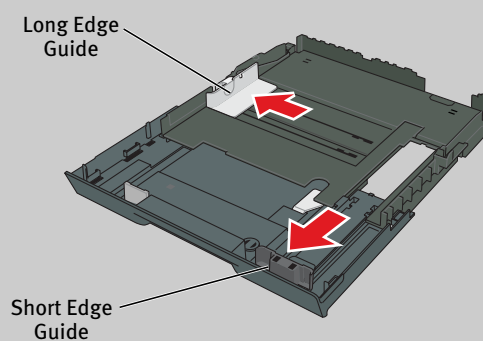
- 3 Remove the cover of the cassette.



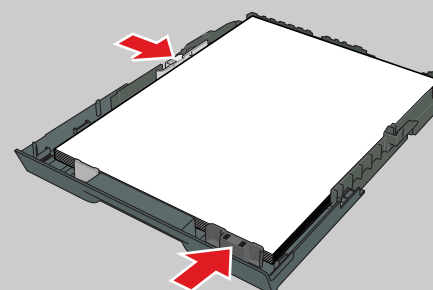
NOTE: For letter-size (8.5" x 11") paper, push the cassette release lever and extend the tray.



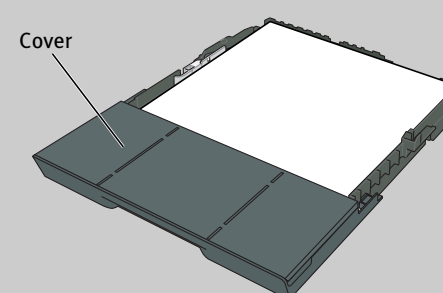
- 4 Slide the long edge paper guide to the left and the short edge paper guide toward you.



- 5 Load paper so that the top right corner touches the inside corner of the cassette. Adjust paper guides to the edges of paper.



- 6 Replace the cover of the cassette.

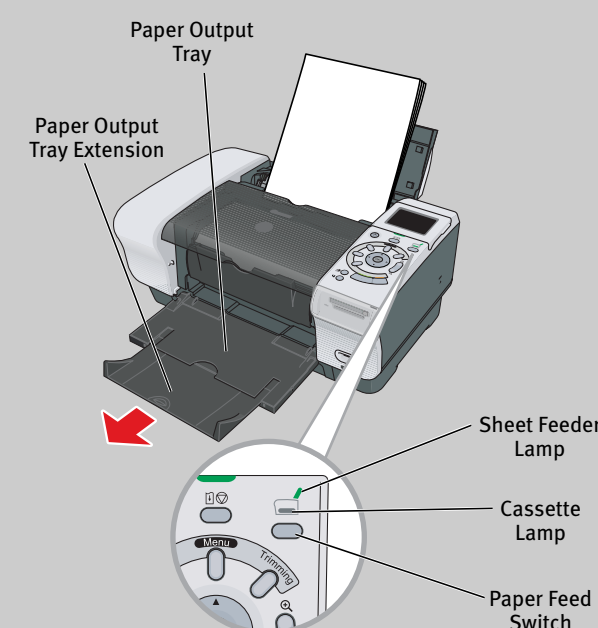


- 7 Insert cassette completely into the printer until it clicks into place.



NOTE: For letter-size (8.5" x 11") paper, the front edge of the cassette will extend beyond the bottom of the printer.

- 8 Lower the paper output tray and pull out the paper output tray extension.



NOTE: When feeding paper from the cassette, press the paper feed switch so that the cassette lamp is lit.