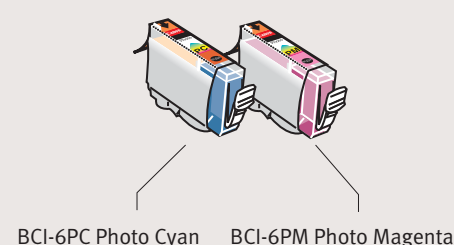
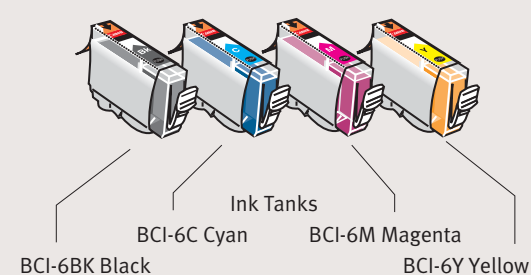
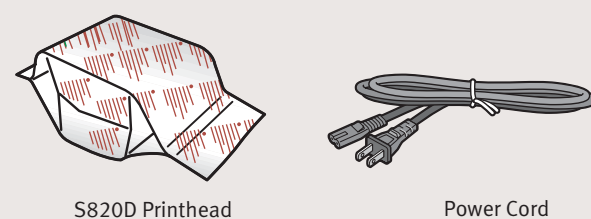
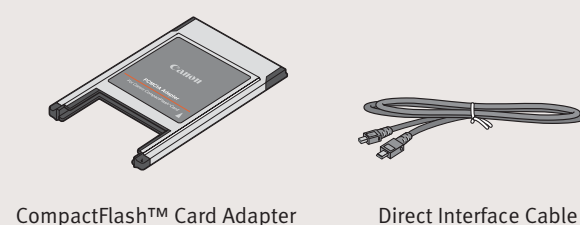
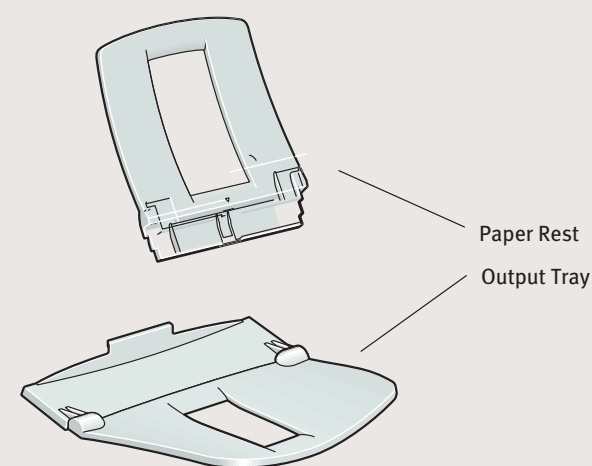
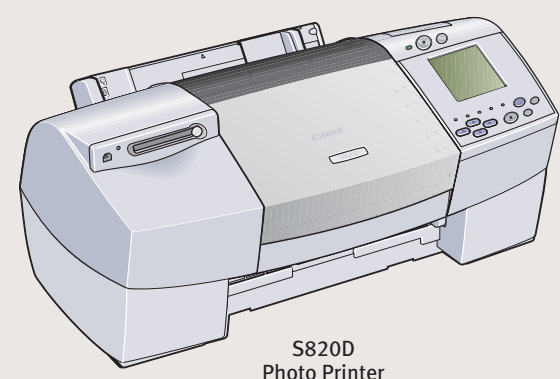


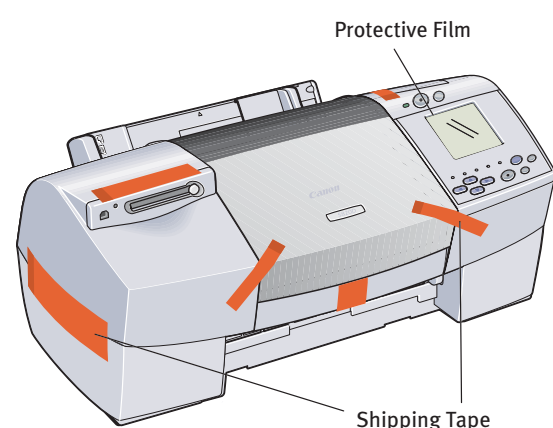
## 1 Unpack the Printer

- Carefully remove all items from the box.

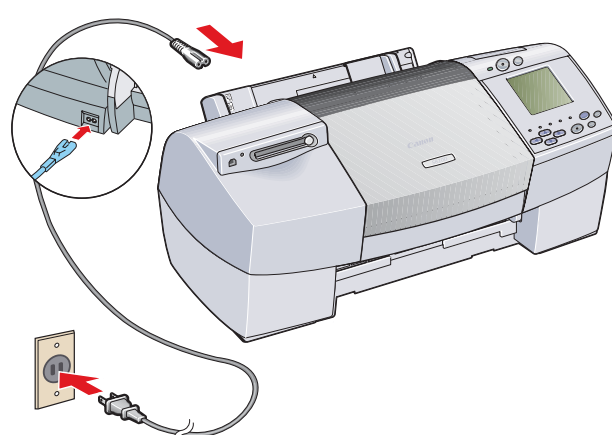


## 2 Prepare the Printer

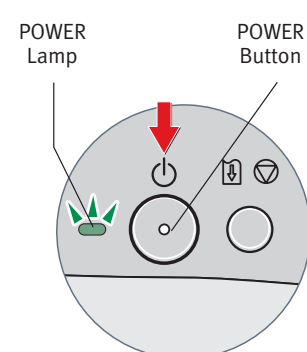
- Remove the shipping tape from the front and sides of the printer. Peel off the protective film from the LCD panel.



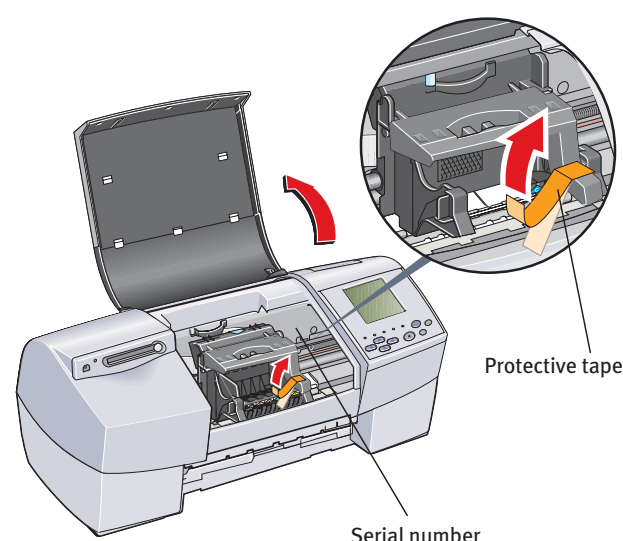
- Plug the power cord into the back of the printer and connect the other end to a power outlet.



- Press the POWER button.



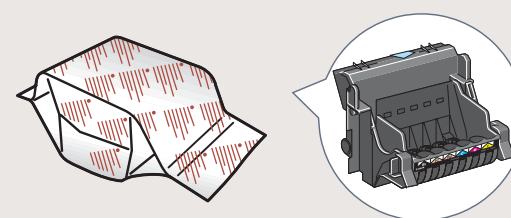
- Open the front cover. The printhead holder automatically moves to the center. Remove the protective tape.



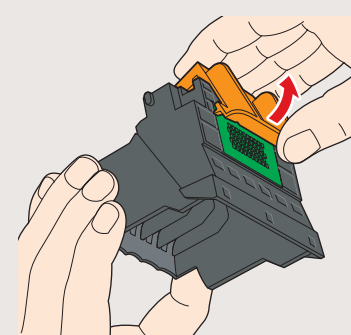
Write down the serial number located to the right of the printhead. You will need this later to register the product.

## 3 Install the Printhead

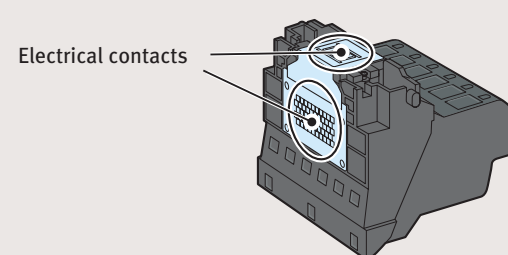
- Remove the printhead from its package.



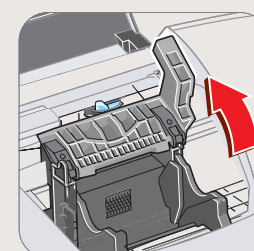
- Turn the printhead over, then remove the orange protective cap.



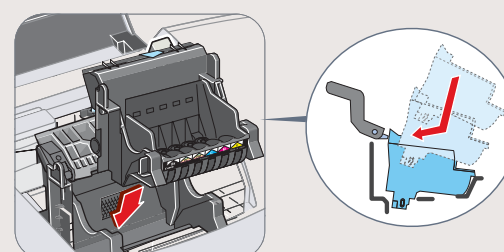
**NOTE:** Do not touch the electrical contacts.



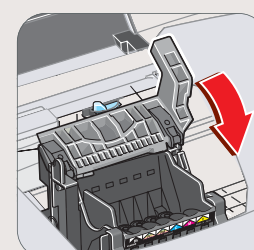
- Raise the gray lock lever.



- Gently slide the printhead into the holder. The printhead will rest at a slight angle. Do not press it down.

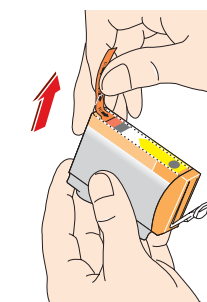


- Lower the lock lever and gently press it down until it locks into place.

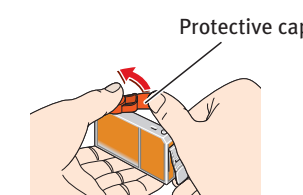


## 4 Install the Ink Tanks

- Pull the orange tab off the yellow ink tank (BCI-6Y), then remove and discard the plastic wrapper.



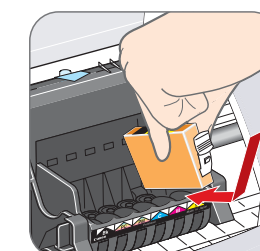
- Twist off and discard the orange protective cap.



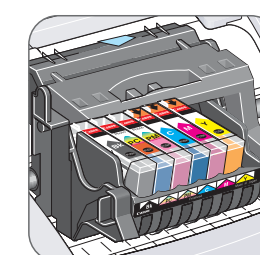
**NOTE:** To avoid spilling ink, never press on the sides of an ink tank.

- Insert the ink tank into the correct slot. (Refer to the color guide on the printhead.)

Press down gently until the ink tank locks into place.



- Insert the remaining five ink tanks into their assigned slots.



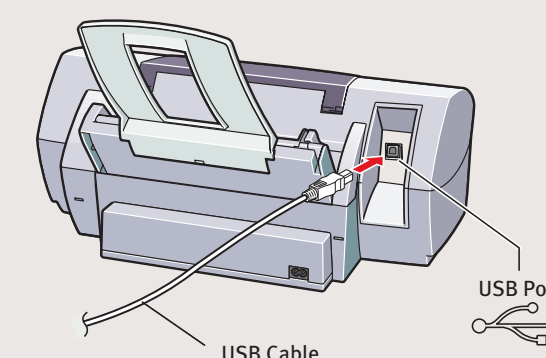
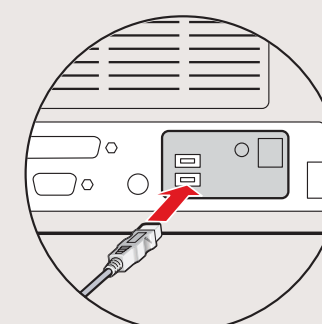
- Close the front cover and attach the paper rest and output tray.



## 5 Connect the Printer To Your Computer

- Turn the printer off.
- IMPORTANT:** Be sure the printer is off before continuing, or the computer will attempt to install the printer driver before the printer is ready.

- Connect one end of the USB cable to the computer, the other to the printer.



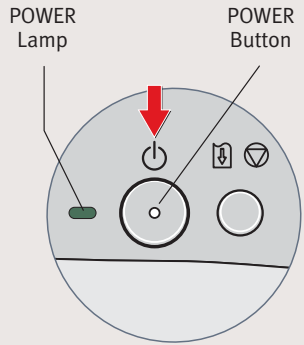
Continue with Step 6 on side two.





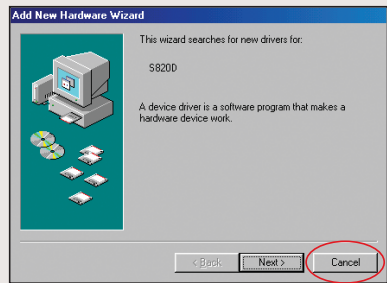
## 6 Install the Printer Driver (Windows®)

- 1 Be sure to **TURN THE PRINTER OFF** before continuing.



**NOTE:** For Windows® XP or Windows 2000, log on to Windows as a member of the Administrators group before continuing.

**IMPORTANT:** If you see the Add New Hardware Wizard, click **Cancel**.



- 2 Close any open software applications, then insert the “S820D Setup Software & User's Guide” CD-ROM. The setup program should run automatically.

**NOTE:** If the setup program does not run, click **Start**, then **Run**, then type D:\msetup.exe, where D is your CD-ROM drive.

- 3 Read the License Agreement, then click **Yes**, if you agree.

- 4 When the main menu appears, make sure that the Printer Driver is highlighted, then click **Install**.



**NOTE:** If you are prompted to restart Windows, remove the CD-ROM, then click **OK**. After the computer restarts, insert the CD-ROM and continue.

- 5 When the Printer Port window appears, **TURN THE PRINTER ON** so the printer port (connection) can be automatically detected.



The software will begin identifying the printer port being used.

**IMPORTANT:** If your computer cannot detect a printer port, refer to the Troubleshooting chapter in the “S820D Quick Start Guide” for instructions.

- 6 When the Terminate Installation window appears, click **OK**.
- 7 Follow the on-screen instructions to continue with Product Registration.

**NOTE:** Remember to register your product to ensure product support. The serial number is located on the inside of the printer, to the right of the printhead.

- 8 When the main menu appears, make sure that Application is highlighted, then click **Install**.



- 9 When the Terminate Installation window appears, click **OK**, then **Exit**.

**NOTE:** For more information, refer to the “S820D Quick Start Guide” or view the electronic documentation on the CD-ROM.

- 10 Click **Yes** if you are prompted to restart your computer

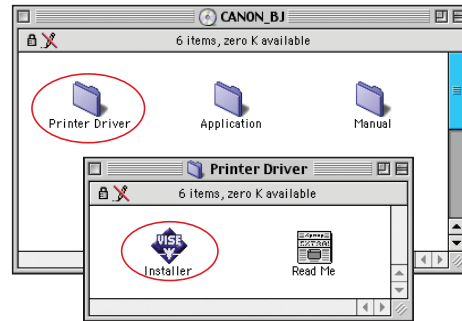
- 11 To insure highest quality output, continue with **Step 7 Align the Printhead**.

## 6 Install the Printer Driver (Macintosh®)

- 1 Turn on your Mac and insert the “S820D Setup Software & User's Guide” CD-ROM.

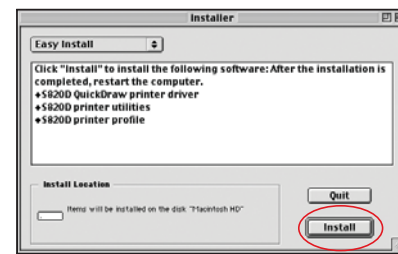
**NOTE:** Screen shots may differ depending on the operating system used.

- 2 Open the Printer Driver folder on the CD-ROM, then double-click the **Installer** icon.

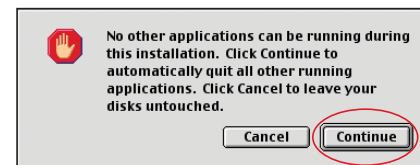


- 3 Read the License Agreement and click **Accept**, if you agree.

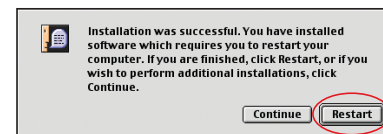
- 4 Click **Install**. The printer driver will load automatically.



- 5 If the message “No other applications can be running...” displays, click **Continue**.



- 6 When the “Installation was successful” screen displays, **Restart** your computer.

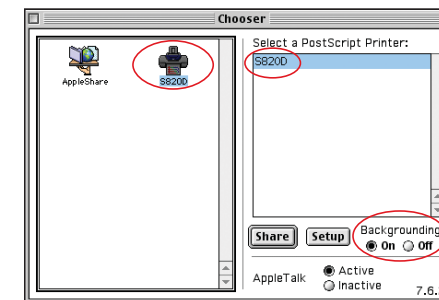


**NOTE:** Register your product to ensure product support. The serial number is located on the inside of the printer, to the right of the printhead.

- 7 After the computer restarts, **TURN THE PRINTER ON**. Select the **Apple** menu, then **Chooser**.



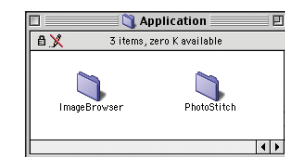
- 8 Click the **S820D** icon in the Chooser. The printer name will highlight and move to the right panel.



**NOTE:** To use the BJ Print Monitor, click the **Backgrounding** button to the **On** position.

- 9 Close the Chooser.

- 10 Access your “S820D Setup Software & User's Guide” CD-ROM again. From the Application folder, double-click on the software to be installed.



- 11 Follow the on-screen instructions. When the “Installation has Finished” screen appears, click **OK**.

**NOTE:** For more information, refer to the “S820D Quick start Guide” or view the electronic documentation on the CD-ROM.

- 12 When prompted, restart your computer.

- 13 To insure highest quality output, continue with **Step 7 Align the Printhead**.

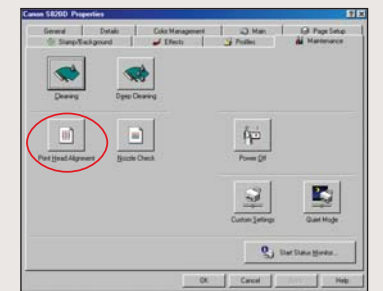
## 7 Align the Printhead

Before using the printer, align the printhead to ensure the best quality printing.

- 1 Add a stack of blank paper to the sheet feeder.
- 2 Start the alignment procedure.

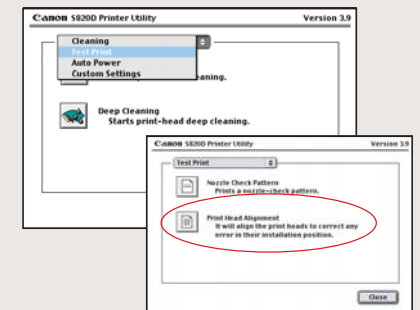
**Windows:**

- a. Click **Start**, then **Settings**, then **Printers**.  
**NOTE:** For Windows XP, select **Start**, then **Control Panel**. Then click on **Printers and Other Hardware**, then **Printers and Faxes**.
- b. Right-click the **Canon S820D** icon, then click **Properties**.
- c. Click the **Maintenance** tab, then click the **Print Head Alignment** icon.



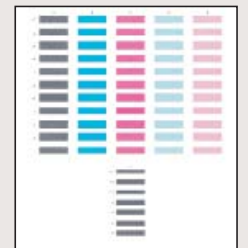
**Macintosh:**

- a. From the **File** menu in a software application, click **Page Setup**.
- b. Click the **Utilities** button.
- c. Click the down-arrow to select **Test Print**.
- d. Click the **Print Head Alignment** icon.

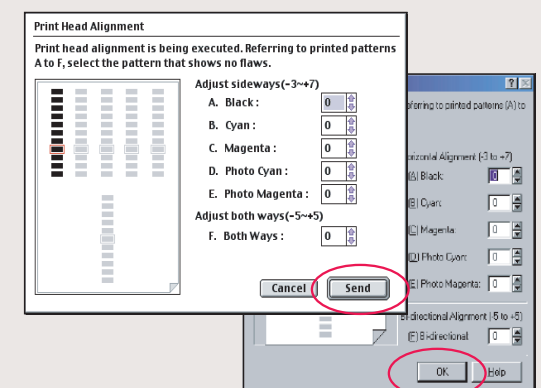


- 3 Click **Yes** (Windows) or **OK** (Macintosh) when prompted if the pattern printed successfully.

- 4 Compare the different patterns for each color on the printout:



- 5 For each color on the test printout, enter the number in the Print Head Alignment window that corresponds with the smoothest looking test pattern.



- 6 Click **OK** (Windows) or **Send** (Macintosh) when finished.