

BUBBLE JET PRINTER

S830D

Quick Start Guide

Table of Contents

Preface	1
Shipping Materials	1
Introduction	1
Printer Parts and Their Functions	2
Setting Up	4
Preparing the Printer	4
Connecting the Printer to the Computer	4
Installing the Print Head	6
Loading Paper	9
Installing the Printer Driver	10
Aligning the Print Head	16
Basic Operations	22
Printing with Windows	22
Printing with Macintosh	24
Printing Without Using the Computer	26
Before Printing	26
Printing Photographs	35
Print Applications	44
If Photographs Cannot Be Printed Clearly (Operation Panel Section)	49
If an Error Is Displayed on the Operation Panel	53
Print Head Maintenance	56
Notes on Handling the USB Interface (for Windows Users)	57
For Further Details...	58

Exif Print

This printer supports Exif 2.2 (also called “Exif Print”).

Exif Print is a standard for enhancing the communication between digital cameras and printers. By connecting to an Exif Print-compliant digital camera, the camera’s image data at the time of shooting is used and optimized, yielding extremely high quality prints.

Canadian Radio Interference Regulations

This digital apparatus does not exceed the Class B limits for radio noise emissions from a digital apparatus as set out in the interference-causing equipment standard entitled “Digital Apparatus”, ICES-003 of the Industry Canada.

Cet appareil numérique respecte les limites de bruits radioélectriques applicables aux appareils numériques de Classe B prescrites dans la norme sur la matériel brouilleur: “Appareils Numériques”, NMB-003 édictée par l’Industrie Canada.

International ENERGY STAR® Program

As an ENERGY STAR Partner, Canon Inc. has determined that this product meets the ENERGY STAR guidelines for efficiency.



The International ENERGY STAR Office Equipment Program is a global program that promotes energy saving through the use of computer and other office equipment. The program backs the development and dissemination of products with functions that effectively reduce energy consumption. It is an open system in which business can participate voluntarily. The targeted products are office equipment such as computers, monitors, printers, faxes and copiers.

Their standards and logos are uniform among participating nations.

Power Requirements

Never use a power supply voltage other than that supplied in the country of purchase. Using the incorrect voltage could cause a fire or electric shock. The correct power supply voltages and frequencies are as follows:

Europe	AC 230V±10%, 50Hz
USA/Canada	AC 120V, 60Hz
Australia	AC 240V, 50Hz

Preface

Shipping Materials

Thank you for purchasing a Canon Bubble Jet Printer. Check that all the following items are in the box. If anything is missing or is damaged, contact your Canon Authorised Dealer or Sales Representative.

- ☐ Printer
- ☐ Setup Software & User's Guide CD-ROM
- ☐ Quick Start Guide
- ☐ Print Head
- ☐ 6 Ink Tanks
- ☐ PCMCIA Card Adapter
- ☐ Bubble Jet Printer - digital camera connection cables (Direct Interface cable DIF-B100/DIF-B250)

* Cables should be purchased separately according to your computer. For details on cable types and specifications, refer to page 4.

Introduction

This Quick Start Guide uses the following symbols to indicate important information. Always observe the instructions indicated by these symbols.

Warning

Instructions that, if ignored, could result in death or serious personal injury caused by incorrect operation of the equipment. These must be observed for safe operation.

Caution

Instructions that, if ignored, could result in personal injury or material damage caused by incorrect operation of the equipment. These must be observed for safe operation.

Also read the Safety Precautions in the User's Guide. Observe the warnings and cautions to avoid personal injury or damage to the printer.

Trademark Notices

- Canon® is a registered trademark of Canon Inc.
- BJ™ is a trademark of Canon Inc.
- Microsoft® and Windows® are registered trademarks of Microsoft Corporation in the U.S. and other countries.
- Apple, Mac and Macintosh are trademarks of Apple Computer, Inc., registered in the U.S. and other countries.
- CompactFlash is a trademark of SanDisk Corporation.
- MEMORY STICK is a trademark of Sony Corporation.
- SmartMedia™ is a trademark of Toshiba Corporation.
- All other trademarks and registered trademarks appearing in this Quick Start Guide are the property of their respective owners.

Copyright ©2002 CANON INC.

All rights reserved. No part of this publication may be transmitted or copied in any form whatsoever without the express written permission.

Printer Parts and Their Functions

■ Front View

Card Slot

Use to connect the PC card adapter.

Indicator lamp

Goes on when memory card reading becomes enabled and flashes while the memory card is being read. When this lamp goes off, when the memory card cannot be read.

Camera Port

Use to connect the printer to a digital camera.

Eject Button

Press to remove the PC card adapter.

Paper Output Tray

Paper Guide

When loading paper, ensure the left edge just touches this guide.
To move the paper guide, pinch the knob and slide in the appropriate direction.

Paper Rest

Sheet Feeder

Load paper here. Paper feeds automatically, one sheet at a time.

Operation Panel

For details, refer to "Operation Panel."

Front Cover

Open to replace the ink tanks or remove jammed paper.

■ Rear View

Image Viewer Connection

Remove the cover when installing the optional TFT Image Viewer <<IV-100>> (see page 32).

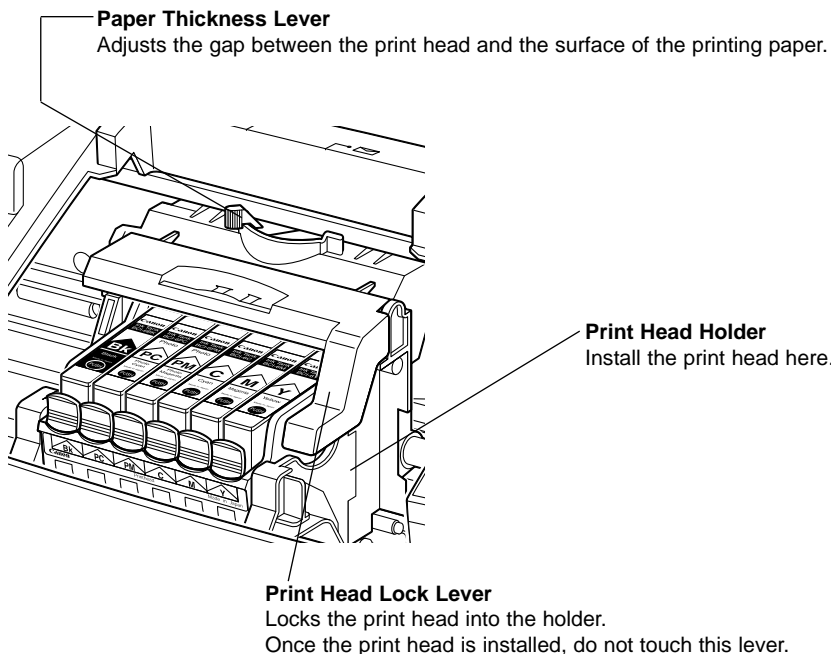
USB Port

Used to connect the printer to a computer through a USB interface.

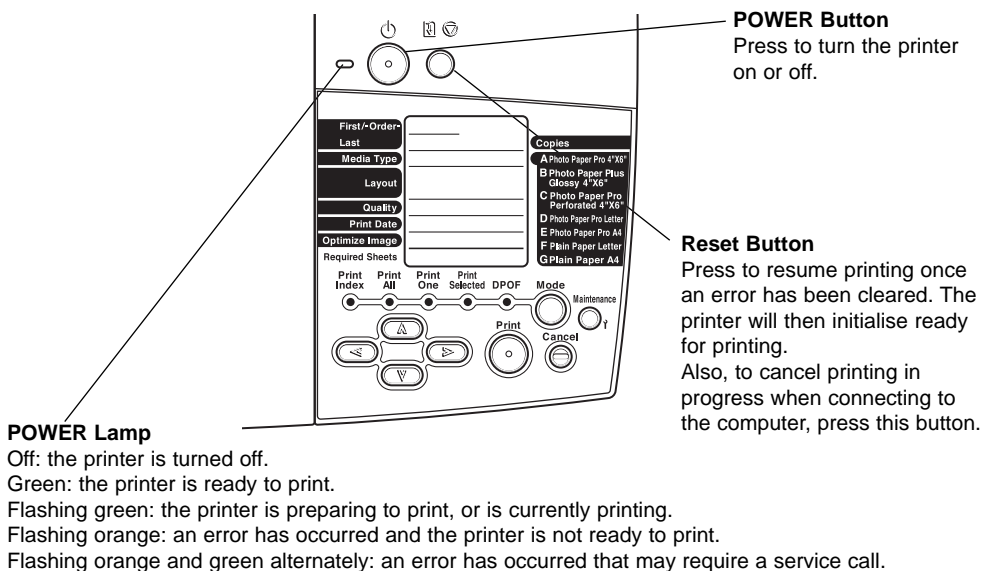
Power Cord Connection

Connector used to connect the supplied power cord.

■ Inside the Printer



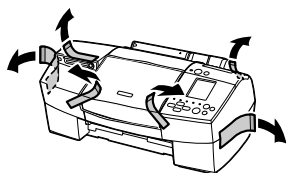
■ Operation Panel



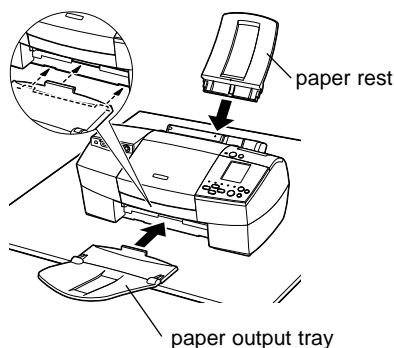
For details on names and functions on the Operation Panel, refer to “Operation Panel Names and Usage” on page 26.

Setting Up

1 ■ *Preparing the Printer*



- 1 Place the printer on a flat surface.
- 2 Remove the packing material and tape from the printer as shown.



- 3 Attach the paper rest to the sheet feeder.
- 4 Attach the paper output tray as shown.

2 ■ *Connecting the Printer to the Computer*

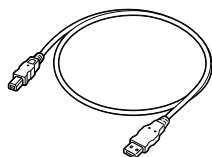
↳ **Note**

If you are printing with only Direct Print, skip this section and go to “Installing the Print Head” on page 6.

Use a USB cable.

USB cable

- Windows XP, Windows Me, Windows 2000, Windows 98
- Mac OS 8.6 or later



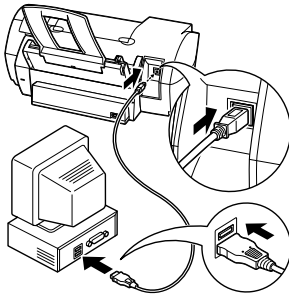
Recommended: Canon or other computer manufacturer cable, up to 2 meters in length.

➡ Notes

- If your computer has an earth connection, ensure that this is attached.
 - If you do not intend to use the printer for a long period of time, unplug the power cord from the power outlet after turning off the printer.
-

Follow the steps below to install the printer driver correctly.

- 1** Ensure the printer and the computer are switched off.
- 2** Connect the cable.



➡ Note

If the Add New Hardware Wizard or Found New Hardware Wizard screen appears when carrying out the following operations, click **Cancel** and turn off the computer.

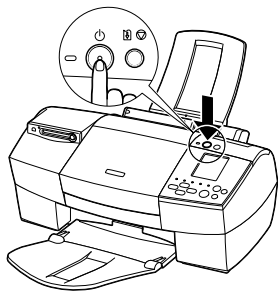


3 ■ Installing the Print Head

Warning

- Never attempt to plug the power cord into the power outlet or unplug the power cord when your hands are wet.
- Never damage, modify, stretch, or excessively bend or twist the power cord. Do not place heavy objects on the power cord.
- Never use any power supply other than the standard power supply available in the country of purchase. Using the incorrect voltage and frequency could cause a fire or electric shock.
- Always push the plug all the way into the power outlet.

■ Installing the Print Head



1 Plug the printer in.

2 Turn on the printer. Do NOT turn on the computer yet.

The POWER lamp flashes and the printer begins to operate. Wait until the POWER lamp remains fully lit.

3 Open the front cover.

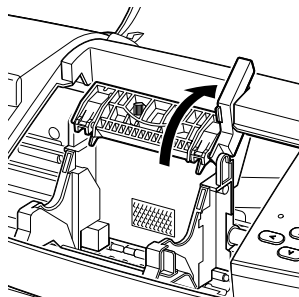
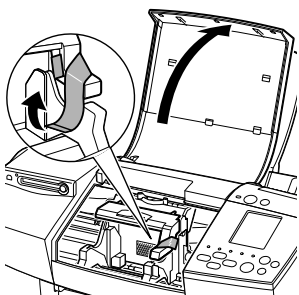
Note

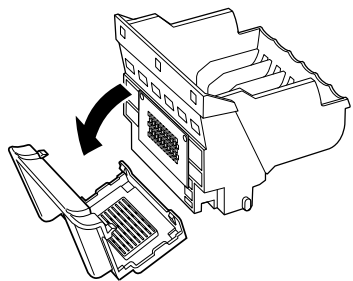
If the front cover is opened more than ten minutes, the print head holder moves to the right side. If this occurs, close the front cover, and open it again.

4 Remove the tape.

5 Raise the print head lock lever.

Do not touch internal parts other than the lock lever.



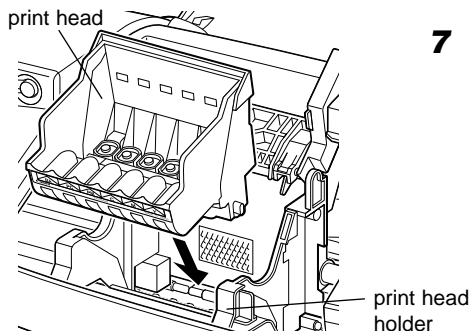
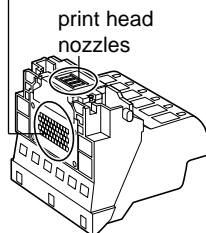


- 6** Remove the protective cap from the print head.

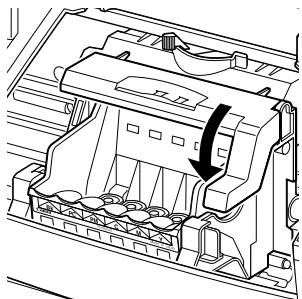
↳ **Notes**

- Do not touch the print head nozzles or electrical contacts.
- Do not attempt to reattach the protective cap once it has been removed.

electrical contacts



- 7** Place the print head in the holder.



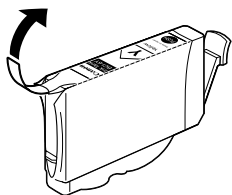
- 8** Lock the print head into place by lowering the lever.

Do not touch the lock lever once the print head has been installed.

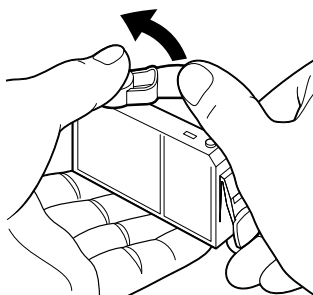
■ Installing the Ink Tanks

⚠ Caution

- For safety reasons, store ink tanks out of the reach of small children.
- Do not drop or shake ink tanks.



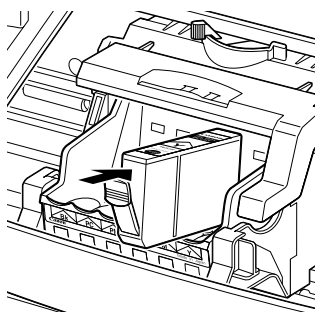
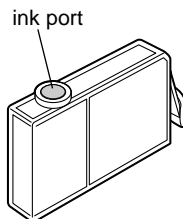
- 1** Take out the yellow ink tank.
- 2** Pull the orange tape in the direction of the arrow and remove the clear film.



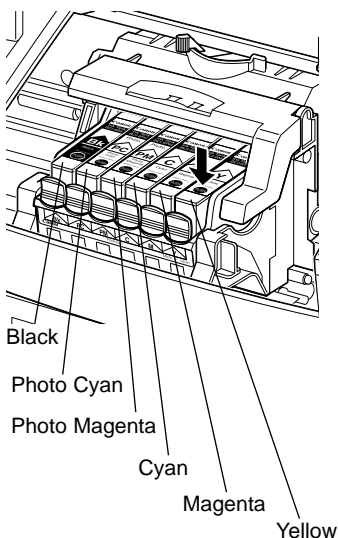
- 3** Hold the ink tank as shown in the diagram and remove the protective cap.

➡ **Notes**

- Do not squeeze the sides of the ink tanks as this may cause the ink to leak out and stain your clothes and hands.
- Do not touch the ink port.
- Do not attempt to reattach the protective cap once it has been removed.



- 4** Insert the yellow ink tank into the right-hand slot. Press the top until it clicks into place.



- 5** Use the same procedure to install the other ink tanks in their appropriate slots.

Check the labels to ensure that each tank is in the correct position.

➡ **Notes**

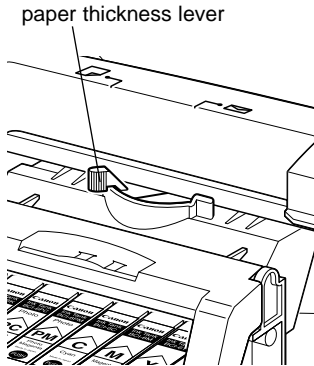
- Only install the ink tanks in the positions specified by the labels.
- If ink tanks are not installed in the right position, colours will not be printed correctly. Immediately reinstall the tank in the correct position and carry out print head cleaning. For details, refer to the User's Guide.

- 6** Close the front cover.

Wait until the POWER lamp remains fully lit.

4 Loading Paper

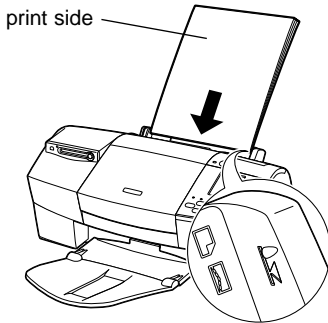
■ Loading A4 (Letter) Size Plain Paper



- 1 Open the front cover.
- 2 Move the paper thickness lever at the top of the print head holder to the left position. Close the front cover.

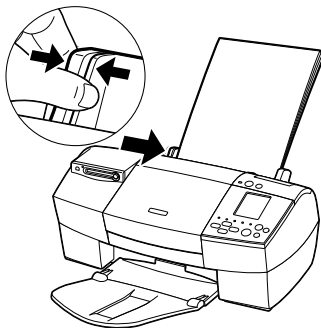
➡ **Note**

Set the paper thickness lever to the left when using plain paper, to the right when using thick paper. Refer to the User's Guide for information on loading envelopes and other media.



- 3 Load the paper, aligning it with the right side of the sheet feeder.

You can load up to 100 sheets of plain paper. Do not exceed this limit. After printing, do not stack more than 50 sheets in the paper output tray.



- 4 Press the paper guide and slide it against the left side of the stack of paper.

You now need to install the printer driver:

Windows: Go to page 10

Macintosh: Go to page 12

(If you are printing with only Direct Print, you do not need to install the printer driver. Go to "Aligning the Print Head" on page 16.)

5 ■ Installing the Printer Driver

➡ **Note**

If you are printing with only Direct Print, skip this chapter and go to “Aligning the Print Head” on page 16.

■ Installing the Printer Driver - Windows

➡ **Notes**

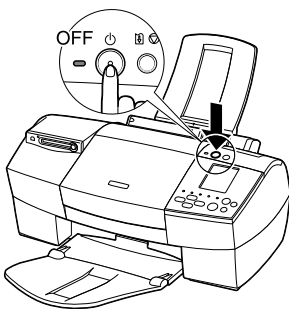
- Do not disconnect the cable or remove the CD-ROM during the installation. The driver cannot be correctly installed.
- The screens below refer to Windows Me installation. Screen may differ depending on the environment you are using.
- When installing the printer driver in Windows XP or Windows 2000, log on to the system as a member of the **Administrators** group.

If the following screen appears automatically, click **Cancel** and follow steps 1 to 7 to install the printer driver.



Special Notes for Windows 98 USB Users

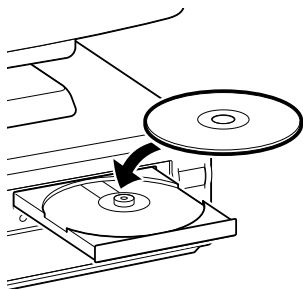
Click **Cancel** to quit the screen and turn off the printer. Next, remove and replace the USB cable connected to your computer.



1 Ensure the printer and computer are switched off.

2 Turn on the computer and start Windows. If any applications automatically run, quit them.

Disable any virus detection programs.
Do NOT turn the printer on at this stage.



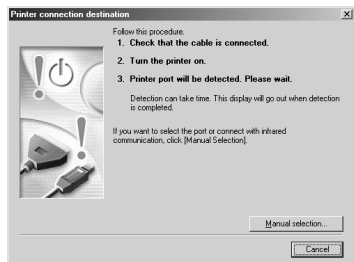
- 3** Place the Setup Software & User's Guide CD-ROM in the CD-ROM drive.

➡ **Notes**

- If the CD-ROM does not run automatically, double-click **My Computer** in the Windows screen, for Windows XP, click **Start** and select **My Computer**, and then double-click the CD-ROM icon.
- If the language selection screen appears, select a language, then click the **Next** button.



- 4** Follow the instructions displayed on the screen. When the screen shown on the left is displayed, click **Install**.

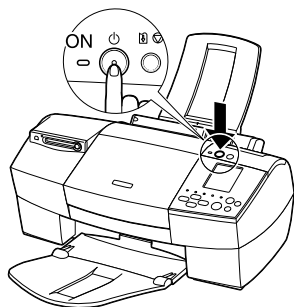


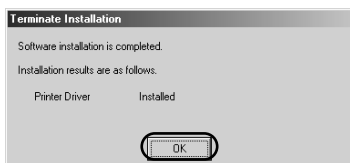
- 5** When the screen shown on the left appears, turn the printer on.

If the printer is recognised, the printer driver will be automatically installed.

➡ **Note**

If the connection is not recognised, refer to the section "Notes on Handling the USB Interface (for Windows Users)" on page 57.

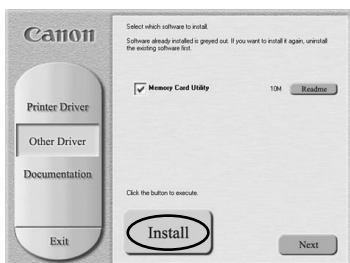




6 Click **OK**.

Before you can use the printer, you must carry out print head alignment on page 16.

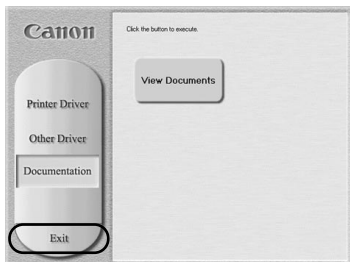
7 Click **Install** to install the memory card utility.



8 Click **OK** after having completed the installation.



9 When the screen shown on the left appears, click **Exit**.



➡ **Notes**

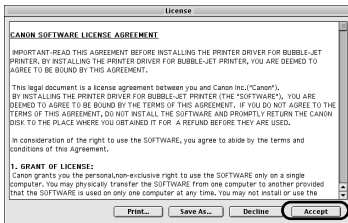
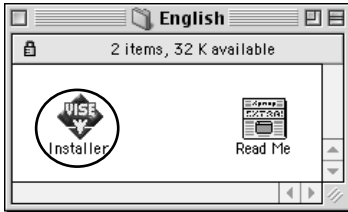
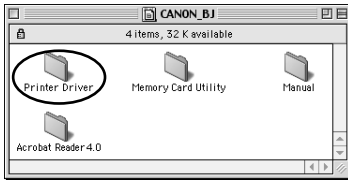
- To view the User's Guide, please refer to page 58.
 - If a message prompting you to restart the computer appears, click **Yes**.
-

■ Installing the Printer Driver - Macintosh

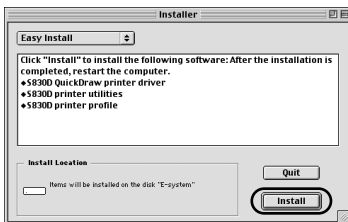
➡ **Notes**

- Do not remove or insert the USB cable during installation, as this may result in the computer or printer not operating correctly.
 - Before installing the driver, disable all virus detection programs and automatically loading programs or remove them from your system folder.
-

- 1 Turn on the Mac.
- 2 Place the Setup Software & User's Guide CD-ROM in the CD-ROM drive.
- 3 Double-click the Printer Driver folder, then select a language.



- 4 Double-click **Installer**.



- 5 Read the Licence Agreement and click **Accept** to continue.

- 6 Click **Install**.

Wait for the installation to finish.

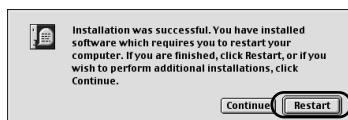
Note

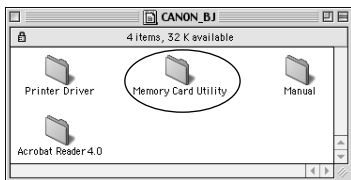


If the above message appears, check that there are no unsaved documents, then click the **Continue** button. If a document needs to be saved, click **Cancel** then save the document. After saving the document, begin again from Step 4.

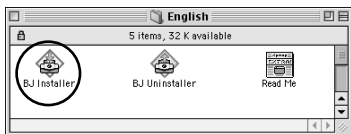
- 7 Click **Restart**.

The computer restarts.

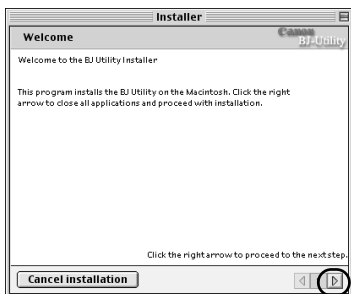




8 Double click **Memory Card Utility** of the **CANON BJ** folder.




9 Double click the **BJ Installer**.



10 Click .



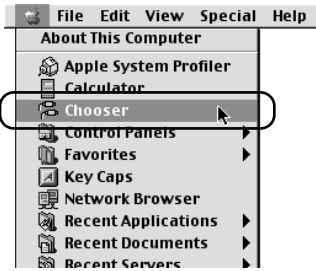
11 Read the Software License Agreement and if you agree, click **Agree** and then click .



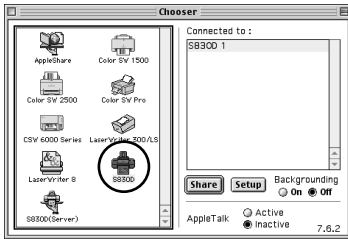
12 Click **Install**.

Installation is started, and when completed, a message for successful installation will be displayed.

Click **Restart now**.



13 Select **Chooser** in the **Apple** Menu.



14 Click the icon for the printer you are using and close **Chooser**.

Before you use the printer, you must carry out print head alignment on page 18.

➡ **Note**

Refer to the User's Guide when using this printer as a network printer.

6 ■ Aligning the Print Head

This operation must be carried out when using the printer for the first time. Aligning the print head positions allows you to print without shifts in the colour registration.

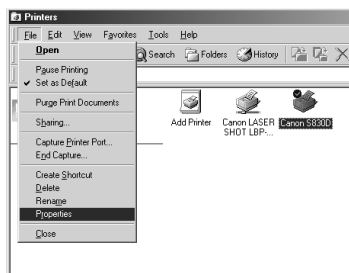
■ Aligning the Print Head - Windows

- 1 Click **Start** and select **Printers in Settings**.

↳ **Note**

For Windows XP, click **Start** and select **Control Panel - Printers and Other Hardware - Printers and Faxes**.

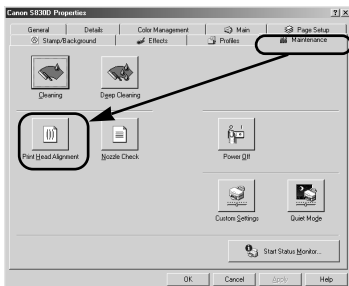
- 2 Click the icon for your printer.
- 3 Open the **File** menu and select:
 - Windows Me/Windows 98→ [Properties]
 - Windows XP/Windows 2000→ [Printing Preferences...]to open the setting screen.



- 4 Click **OK**.

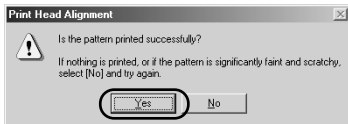


- 5 Click the **Maintenance** tab, and click the **Print Head Alignment** icon.



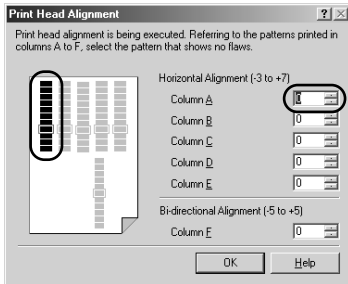
- 6 Check that paper is loaded in the printer and click **OK**. If a message warning you not to perform other operations appears, click **OK**.



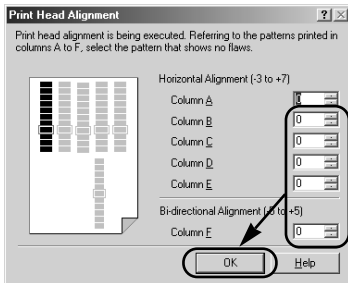


- 7** After the pattern is printed, click **Yes**.

If the pattern is not printed successfully, open the front cover and ensure that the ink tanks are correctly installed.



- 8** Look at the print-out. From the patterns in **Column A**, select the most even, least irregular pattern and enter the number.



- 9** In the same way, one by one, select the most even patterns printed with the least irregularities from each of **Columns B to F**, enter their numbers, and click **OK**.



- 10** Click **OK**.

This completes the printer setup. The printer is now ready to use.

➔ Note

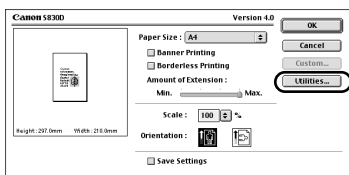
Before turning off the power

If you are using Windows XP or Windows 2000, the computer recognizes the printer as a removable disk that is connected with a USB. Therefore, to turn off the printer while you are using the computer, you must perform the hardware removal operation on the computer.

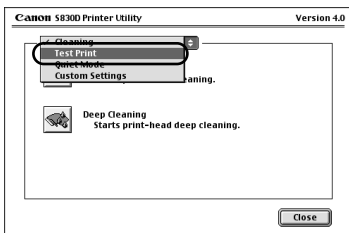
See the Windows user's guide for the removal operation.

■ Aligning the Print Head - Macintosh

- 1 Select **Page Setup** in the **File** menu.
- 2 Click **Utilities**.

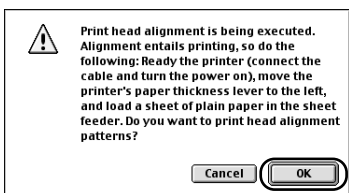


- 3 Select **Test Print** from the menu and click the **Print Head Alignment** icon.

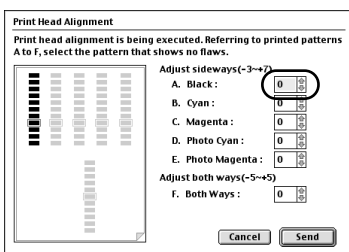


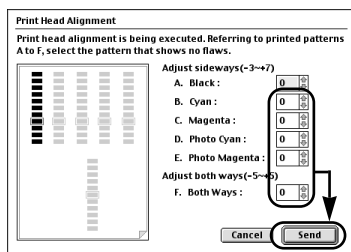
- 4 Check that paper is loaded in the printer and click **OK**.

If the pattern is not printed successfully, open the front cover and ensure that the ink tanks are correctly installed.

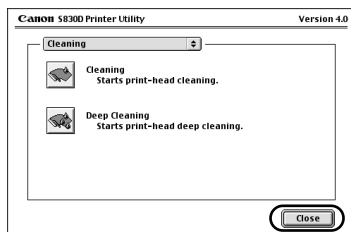


- 5 Look at the print-out. From the patterns in Column A, select the most even, least irregular pattern and enter the number.

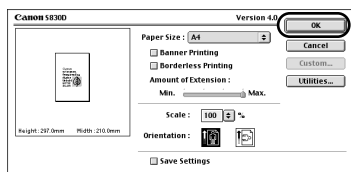




- 6** In the same way, one by one, select the most even patterns printed with the least irregularities from each of Columns B to F, enter their numbers and click **Send**.



- 7** Click **Close**.



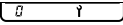
- 8** Click **OK**.

This completes the printer setup. The printer is now ready to use.


■ Adjusting the Print Head - Operation Panel -

To print photographs more beautifully, be sure to adjust the position of the print head before you begin printing on your purchased printer for the first time.
You should also adjust the print head position if lines or smudges appear when you print photographs.


1 Press the **Maintenance** button.

The  icon is displayed in **Required Sheets**.

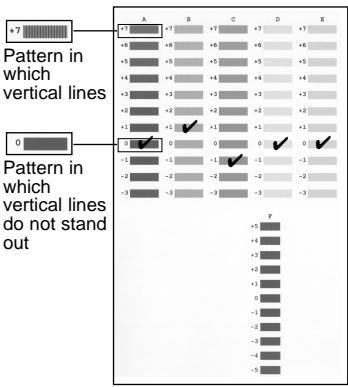
2 Press the (right) button four times.

The  icon is displayed.


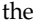
3 Check that A4-sized paper is set, and press the **Print** button.

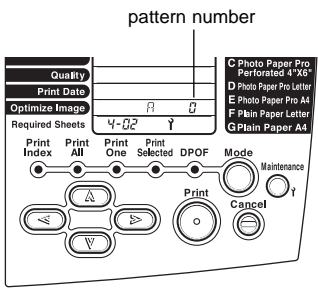
Patterns are printed. When printing ends, the  icon is displayed.

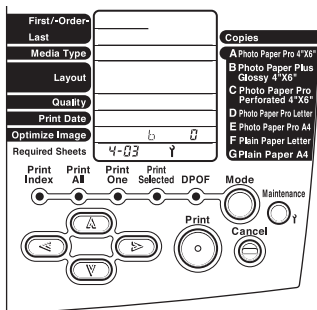
4 Examine the printed page, place a check mark on the pattern in which the vertical lines that stand out the least.



5 Press the (left) or (right) button to display the pattern number (+7 to -3) of column A where the check mark was placed in step 4.

When you press the  (right) button, the number increases; when you press the  (left) button, the number decreases.





6 Press the **Print** button.

The icon is displayed.

➡ **Note**

To interrupt the operation and start over, press the **Cancel** button, and start over from step 1.

7 Repeat steps 5 and 6, and set the pattern numbers for columns B to F.

When you finish pattern number settings for up to column F, the icon appears.

8 Press the **Print** button.

The icon appears.

9 Press the **Maintenance** button.

This completes the preparations for the printer.

Basic Operations

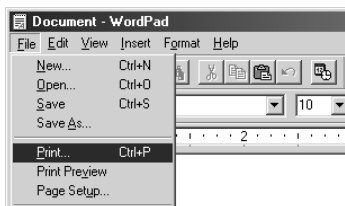
⚠ Caution

- If you detect smoke, unusual smells or strange noises around the printer, immediately switch the printer off and always unplug the printer. Contact your local Canon service representative.
- To avoid injury, never put your hand or fingers inside the printer while it is printing.

1 ■ Printing with Windows

Adjusting the print settings according to your needs allows you to produce better quality prints. In this section, we will use WordPad for the purpose of explanation. The procedures you use and the screens that appear on your computer may differ according to the application that you use.

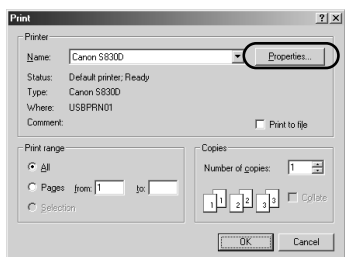
■ Printing



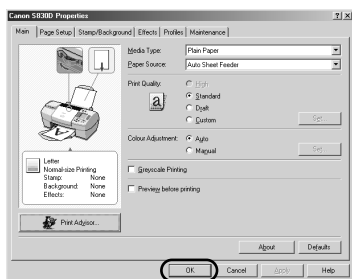
- 1 Print the document from the application.

On the **File** menu, click **Print**.

Check the application's user's manual for the actual procedures.



- 2 Ensure your printer is selected, then click **Properties**.



- 3 Specify the required settings and click **OK**.

➡ Note

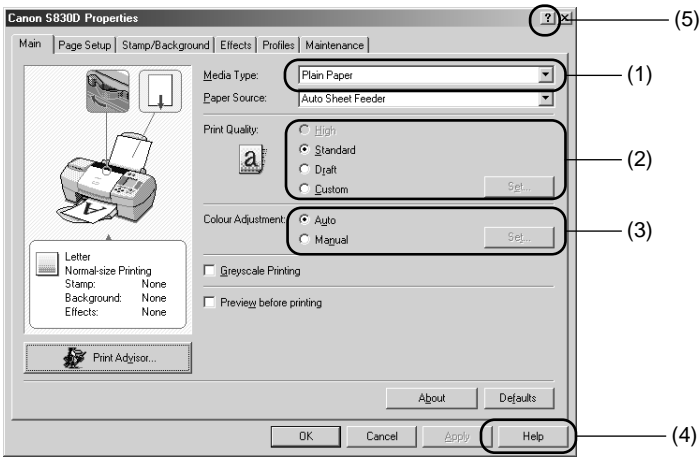
If you use anything other than plain paper, please refer to "Basic Print Settings" on page 23.

- 4 To start printing, click **OK**.

Printing will start in a few moments.

■ Basic Print Settings

For the best print quality, specify the minimum requirement settings in the **Main** tab. To get the best results, ensure you select the type of media loaded in the printer when printing on paper other than plain paper.



(1) Media Type	Select the type of media loaded in the printer.
(2) Print Quality	Select one option from High , Standard and Draft . Select Custom to set the print quality manually.
(3) Colour Adjustment	If you wish to control the colour adjustment settings in more detail, select Manual .
(4) Help	Click this for more details on the functions in the tab. (This may not appear when using Windows XP or Windows 2000. If this happens in Windows XP, click Start then select All Programs - Canon S830D - Guide . In Windows 2000, click Start then select Programs - Canon S830D - Guide).
(5) ?	Click this to change the cursor shape to ?. By clicking on the item's name with this ? cursor, an explanation will be displayed.

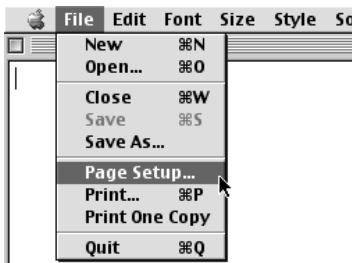
➡ Notes

- Clicking the **Print Advisor** allows you to change to the most appropriate print settings simply by answering questions when prompted.
- Use the application to set the paper size and paper orientation. Before printing, open the settings screen and check that the **Page Size** in the **Page Setup** tab is the same as that specified within application.
- Refer to the User's Guide for more information about printer driver functions.

2 ■ Printing with Macintosh

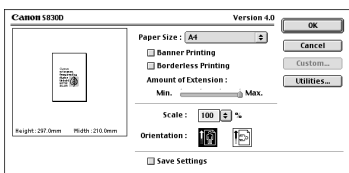
Adjusting the print settings according to your needs allows you to produce better quality prints.

■ Printing



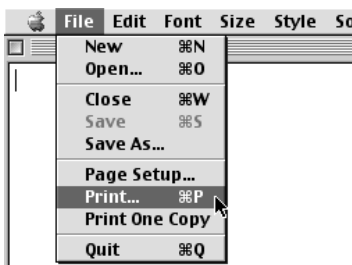
- 1 Open the **Page Setup** dialog box in your application.

On the **File** menu, click **Page Setup**. Check the application's user's manual for the actual procedures.



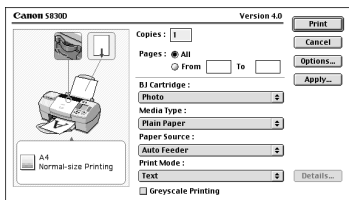
- 2 Specify the page setup.

For details, refer to "Page Setup" on page 25.



- 3 Open the **Print** dialog box in your application to print the document.

On the **File** menu, click **Print**. Check the application's user's manual for the actual procedures.



- 4 Specify the print settings according to your requirements.

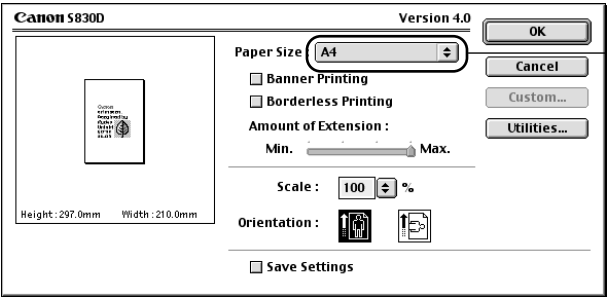
For details, refer to "Basic Print Settings" on page 25.

- 5 Click the **Print** button.

Printing will start in a few moments.

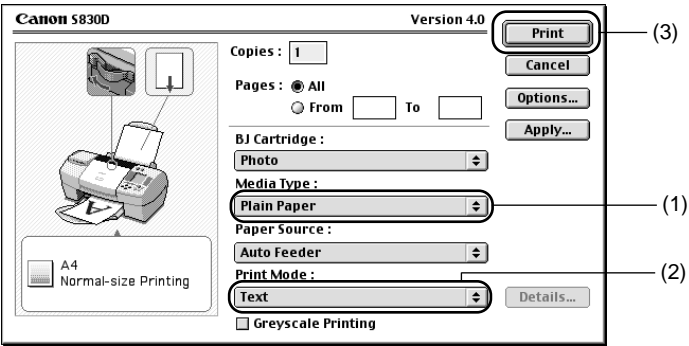
■ Page Setup

Use the **Page Setup** dialog box to specify the paper size settings.



■ Basic Print Settings

For the best print quality, specify the minimum requirement settings in the **Print** dialog box. To get the best results, ensure you select the type of media loaded in the printer when printing on paper other than plain paper.



(1) Media Type	Select the type of media loaded in the printer.
(2) Print Mode	Select the closest type of document you want to print. To specify more detailed settings for the print quality or colour, select Manual and click Details....
(3) Print	Click this to start printing.

➡ Notes

- See Balloon Help for more information about other printer driver functions. Select **Show Balloons** in the **Help** menu for an explanation of each of the items in the setting screen. To see the explanation, point to the item with the mouse.
- Refer to the User's Guide for more information about printer driver function.

Printing Without Using the Computer

This chapter describes the procedure for using only the printer without the computer to print photographs taken with a digital camera.

1 ■ Before Printing

This section describes basic operations required for printing, including how to use the operation panel and memory card and how to connect a digital camera to the printer.

■ Operation Panel Names and Usage

The names and usage of the operation panel used in print setup are described below.

Operation Panel Names and Functions

Last

When printing a range of continuous photograph frames, specify the number of the last photograph. For specified frame printing, specify the number of the photograph to be

Media Type

Specify the type of media to be used for printing.

Layout

Specify the number of
photographs to be printed on
one sheet.

Quality

Specify the print quality.

Print Date

Specify whether the date when the photograph was taken is to be printed.

Optimize Image

Specify whether the photograph is to be adjusted before printing.

Required Sheets

The number of sheets required for printing is displayed. During maintenance, the step number is displayed. If an error occurs, the error number is displayed.

-First/-Order-

When printing a range of continuous photograph frames, specify the number of the first photograph. (When printing only one frame, specify the number of photograph to be printed.) For specified frame printing, the specified number (printing order) is displayed.

-Cursor

The cursor is displayed at the item whose setting can be changed.

Copies

Specify the number of
photograph copies to be
printed.

- **Mode button**

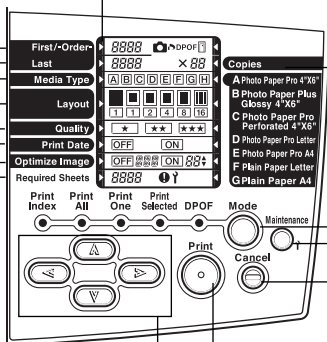
Press this button to switch the print mode (index printing, all frame printing, single frame printing, etc.). See "Printing Photographs" on page 35.

- Maintenance button

Press this button to perform printer maintenance operations, such as print head cleaning.

- Cancel button

Press this button to stop
printing or to stop
maintenance.



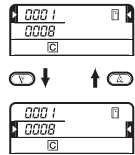
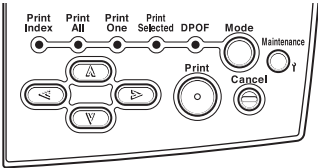
Cursor button

Press these buttons when setting various items. See "Operating the Cursor Buttons" on page 27.




-Print button

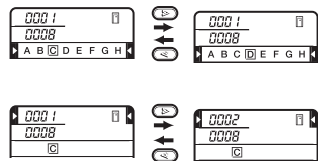
Press this button to start printing or to apply the maintenance setting.

Operating the Cursor Buttons



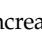
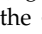


Moving between Items

To move the  (cursor), press the  (up) and  (down) buttons.



Changing a Setting

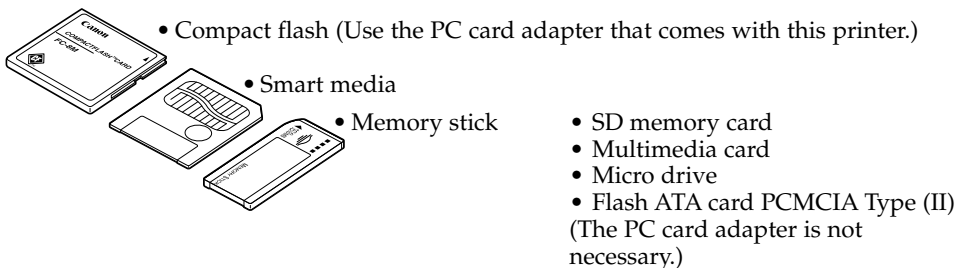
To change the photograph number or a setting, press the  (left) and  (right) buttons. The  (right) button increases the photograph number; the  (left) button decreases the photograph number.

■ Using a Memory Card

This section explains how to set and remove a memory card.

Memory Card and PC Card Adapter

You can use the following memory cards. Set the memory card in the PC card adapter to use the card.



When using a memory card, note the following points:

- Some digital cameras do not support 64MB or 128MB memory cards. Photographs stored in memory cards that are not supported by the camera cannot be read or may be destroyed.
- Format the memory card with the digital camera. This printer does not support the computer's unique format.
- Photographs that have been edited with the computer may not print properly.
- Use a PC card adapter that is recommended by the memory card you use.

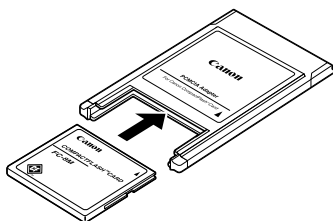
↳ Note

For information on memory cards and PC card adapters that are supported by a digital camera, ask the digital camera manufacturer.

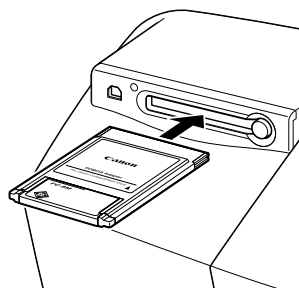
Setting the Memory Card


↳ Note

The operation procedure is different if you are using a memory card when the printer is connected to the computer. See the "User's Guide."



- 1** Turn on the printer.
- 2** Set the memory card into the PC card adapter.



The  (memory card) mark appears on the operation panel when the PC card adapter is set correctly.

Memory card mark

First-/Order- Last		Copies
Media Type		A Photo Paper Pro 4"X6"
Layout		B Photo Paper Plus Glossy 4"X6"
Quality		C Photo Paper Pro Perforated 4"X6"
Print Date		D Photo Paper Pro Letter
Optimize Image		E Photo Paper Pro A4
Required Sheets		F Plain Paper Letter
		G Plain Paper A4

3 Set the PC card adapter into the card slot.

The indicator lamp will go on.

↳ Notes

- When changing/modifying the content of the memory card of the computer, ensure to print from the computer. When printing from the operation panel, printing may not be done correctly.

When printing from the operation panel, eject the memory card and print again after having reset it.

- Ensure to insert the PC card adapter deeply.

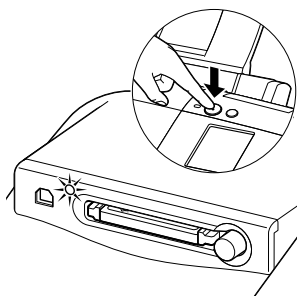
↳ Note

If images on the installed memory card are recorded in formats that are not supported by this printer, an -E- (error) appears with **First-/Order-** or **Last**. Such images are not printed.

Ejecting the Memory Card

↳ Note

The operation procedure is different if you are using a memory card when the printer is connected to the computer. See the "User's Guide."

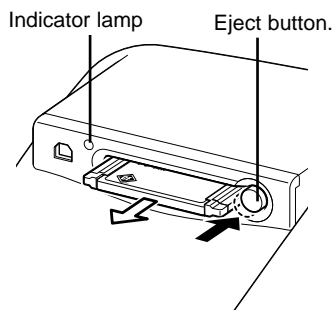


1 Check that the indicator lamp is not blinking.

↳ Note

If you remove the memory card or switch off the power to the printer while the indicator lamp is blinking, the data of the memory card may be destroyed.

2 Press the printer power button to turn off the printer.



3 Check that the indicator lamp is off, and press the Eject button.

4 Pull out the PC card adapter.

➡ **Note**

Do not remove only the memory card with the PC card adapter still set in the card slot.

➡ **Notes**

Saving the ink (to users who will be using the printer without connecting to a computer)

- Except when the printer will not be used for a long period of time (one month or longer), always leave the printer plugged in. (Use the Power button on the printer to turn the printer on/off.)

If the printer is not connected to a computer, print head cleaning begins automatically when the power plug is unplugged and then reinserted. This action maintains the optimal print head condition but also consumes ink.

- This product should be connected directly to the power outlet.

If this product is switched on/off from a extension lead that has a power switch, cleaning begins automatically because the same condition exists as when the power plug is unplugged and reinserted, and ink will run out faster.

■ Using a Digital Camera

You can print photographs connecting a Canon digital camera which has direct printing function. If you connect the digital camera with a provided Bubble Jet Printer - digital camera connection cable, perform the print operations from the digital camera.

➡Note

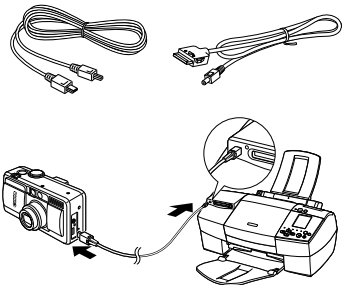
When you connect a digital camera, you can use the media types listed in the table below.

Paper type can be used	Digital camera setting
Photo Paper Pro for Borderless Printing (PR-101)	Card #1
Glossy Photo Cards (FM-101)	Card #2
Photo Paper Pro (PC-101S)	Card #3
Photo Paper Pro Letter size (PR-101)	LTR
Photo Paper Pro A4 size (PR-101)	A4

Descriptions may differ from those in the above table depending on the camera used.

Direct Interface
Cable DIF-


Direct Interface
Cable DIF-B250

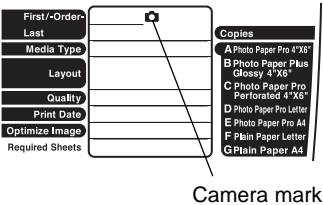


- 1 Turn on the printer.
- 2 Connect the digital camera to the printer.


Use either of the cables that come with the printer.

For the type of connection cables that match up correctly with your camera, read the instructions that come with the camera.

- 3 Turn on the digital camera.
The  (camera) mark appears.



➡Note

The  (camera) mark flashes when printing starts.

The setting for communicating with this printer differs depending on the camera that you use. Read the instructions that come with the camera.

➡Notes

- Printing photographs
When a digital camera is connected, you will not be able to print from the operation panel. For instructions on printing photographs from the digital camera, see the manual that comes with the digital camera.
- Removing the cable
To remove the digital camera cable, follow the procedure below.

- 1 Disconnect the cable on the printer side.
- 2 Turn off the digital camera.

■ Using the Optional Image Viewer

The optional TFT Image Viewer <<IV-100>> allows you to display JPEG image data stored on the inserted memory card and check the print layout of the first page.

Switching the Viewer Display On/Off

Switching the Viewer Display On

After attaching the viewer to the printer, turn on the viewer display according to the following procedure:

- 1** Turn on the printer.
- 2** Insert the memory card containing saved JPEG data into the card slot (see page 28).

The first data that was saved to the memory card is displayed on the viewer.

➡ **Note**

When Digital Print Order Format (DPOF) is set, the photographs are displayed in the chronological order they were shot.

Switching the Viewer Display Off

The viewer display goes off under the following conditions:

- The printer is turned off.
- A digital camera that can print data directly is connected (see page 31).
- The inserted memory card is ejected.

➡ **Note**

If no key operation on the operation panel is performed for about five minutes, the viewer display goes off automatically (sleep mode). In sleep mode, the viewer display comes back on when a key operation is performed on the operation panel.

Adjusting the Brightness and Contrast

The brightness and contrast of the viewer display can be adjusted from maintenance mode.

Adjusting the Brightness

- 1 Check that the printer power is on.
- 2 Insert a memory card to which JPEG data has been saved (see page 28).
- 3 Press the **Maintenance** button.


The  icon appears in **Required Sheets**.

- 4** Press the (right) button five times.


The icon is displayed.


- 5** Press the **Print** button.

The  icon appears in **Optimize Image**.

- 6** Adjust the brightness by using the (left) and  (right) buttons.

You can adjust the brightness within the following setting range by operating the buttons. The base setting is 0.

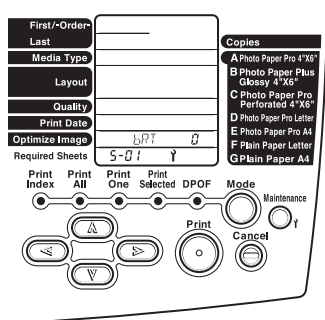
: As the number increases in the negative direction, the brightness becomes darker (-1 to -9).

: As the number increases in the positive direction, the brightness becomes brighter (1 to 9).

- 7** Press the **Print** button.

The data is displayed in the viewer at the brightness that was set.

To exit Maintenance mode, press the **Maintenance** button.

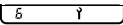


Adjusting the Contrast

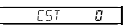
- 1 Check that the printer is on.
- 2 Insert a memory card to which JPEG data has been saved (see page 28).
- 3 Press the **Maintenance** button.



The  icon appears in **Required Sheets**.

- 4 Press the  (right) button six times.


The  icon appears.


- 5 Press the **Print** button.

The  icon appears in **Optimize Image**.

- 6 Adjust the contrast by using the  (left) and  (right) buttons.

You can adjust the contrast within the following setting range by operating the buttons. The base setting is 0.

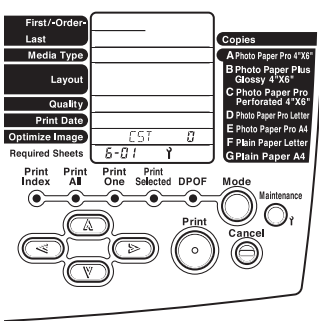
 : As the number increases in the negative direction, the contrast becomes deeper (-1 to -9).

 : As the number increases in the positive direction, the contrast becomes lighter (1 to 9).

- 7 Press the **Print** button.

The data is displayed in the viewer with the contrast that was set.

To exit Maintenance mode, press the **Maintenance** button.

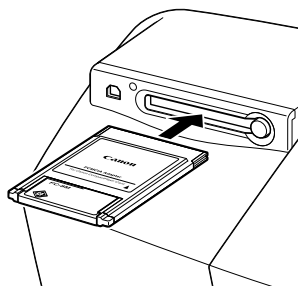


2 ■ Printing Photographs

This section explains how to print photographs without using a computer.

■ Print Flow

Print photographs according to the following procedure. The printing method can be selected from five modes: Index, All Frames, Single Frame, Specified Frame, and DPOF.



1 Setting the memory card.

Set the memory card (see page 28).

2 Selecting a print method.

Select a print method from the five selections.

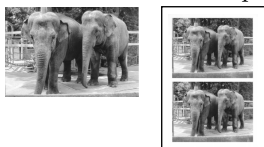
Index Printing (see page 37)

Prints a list of the photographs.



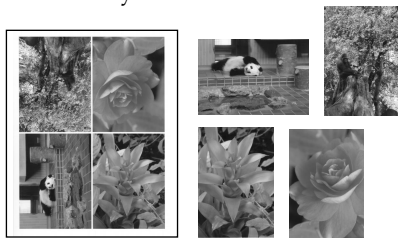
Single Frame Printing (see page 39)

Prints the selected one photograph.



Specified Frame Printing (see page 41)

Prints the specified photographs individually.



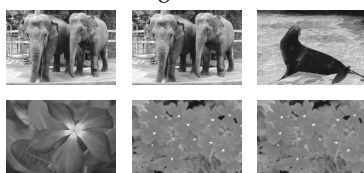
All Frames Printing (see page 39)

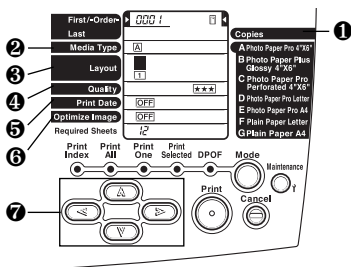
Prints all photographs individually.



DPOF Printing (see page 42)

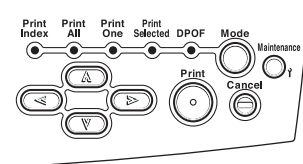
Prints according to the camera settings.





3 Setting print details

- ① Setting the Number of Print Copies (see page 44)
- ② Setting the Media Type (see page 44)
- ③ Setting the Print Layout (see page 45)
- ④ Setting the Print Quality (see page 46)
- ⑤ Printing the Date (see page 46)
- ⑥ Correcting Photographs (see page 47)
- ⑦ Operating the Cursor Buttons (see page 27)



4 Printing

Load paper into the printer, and press the **Print** button.

Loading the paper: Regular Paper (see page 9)

Other Paper (see page 61)

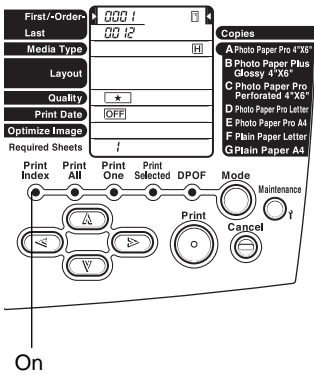
■ Printing a Photograph List (Index Printing)

This mode allows you to print a list of the photographs and photograph numbers stored on the memory card.



➡ Notes

- You will need the photograph numbers to specify the photographs to be printed. Note that these numbers are different from the ID numbers that the digital camera assigns.
- Printing is enlarged or reduced automatically to match the paper size. Depending on the **Media Type** setting, the top, bottom, right, or left section of the photograph may be cut off when the photograph is printed.



1 Press the **Mode** button, and select **Print Index**.

2 Set **Media Type** and **Quality**.

See "Print Applications" on page 44.

You can also print a partial photograph index by specifying a range. See "Specifying the range and print the photographs" on page 38.

3 Load paper in the printer.

You will need the number of sheets indicated in **Required Sheets**.

➡ Note

For instructions on loading the paper, see "Loading Paper" on page 9 or the "User's Guide."

For details on the paper types that can be used, see "Setting the Media Type" on page 44.

4 Press the **Print** button.

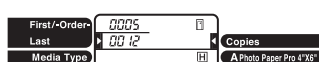
Printing starts.










➡ **Note**

Specifying the range and print the photographs

You can print only the specified range of the photographs in the memory card using either Index printing or All Frames printing function. Set the **Print Index** or **Print All** mode by using the **Mode** button, and then specify the range according to the procedure below.

You will need the photograph numbers to specify the range of photographs to be printed. To check the photograph numbers, use index printing. For details, see "Printing a Photograph List (Index Printing)."

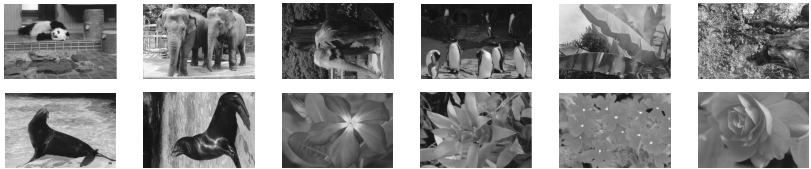


- 1** Move the  (cursor) to **First/Order** by pressing the  (top) and  (bottom) buttons.
- 2** Display the number of the photograph to be printed first by pressing the  (left) and  (right) buttons.
- 3** Move the  (cursor) to **Last** by pressing the  (down) button.
- 4** Display the number of the photograph to be printed last by pressing the  (left) and  (right) buttons.

If you specify a photograph number that is smaller than the **First** number, the photographs will be printed in reverse order starting from the photograph with the largest photograph number.

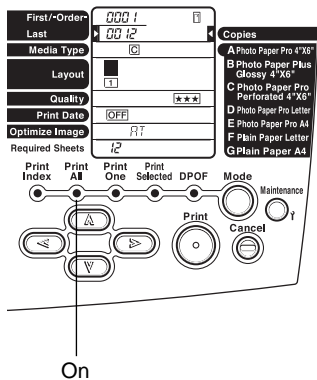
■ Printing a Sequential Range of Photographs (All Frames Printing)

This mode allows you to print all photographs found on the memory card. You can also specify a range to print only some of the photographs.



➡ Note

Printing is enlarged or reduced automatically to match the paper size. Depending on the **Media Type** and **Layout** settings, the top, bottom, right, or left section of the photograph may be cut off when the photograph is printed.



1 Press the **Mode** button, and select **Print All**.

2 Set **Media Type** and **Layout**.

See "Print Applications" on page 44.

You can specify a range to print only some of the photographs. See "Specifying a Print Range" on page 38.

3 Load paper into the printer.

You will need the number of sheets displayed in **Required Sheets**.

➡ Note

For instructions on loading paper, see "Loading Paper" on page 9 or the "User's Guide."

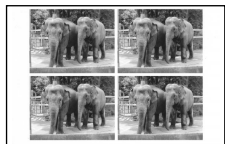
For details on the paper types that can be used, see "Setting the Media Type" on page 44.

4 Press the **Print** button.

Printing starts.

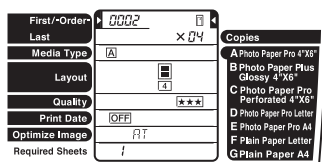
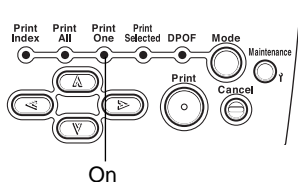
■ Printing Photographs One at a Time (Single Frame Printing)






This mode allows you to select and print a single photograph found on the memory card.



➡ Notes

- You will need the photograph numbers to specify the photograph to be printed. You can check the photograph numbers by printing an index. See "Printing a Photograph List (Index Printing)" on page 37.
 - Printing is enlarged or reduced automatically to match the paper size. Depending on the **Media Type** and **Layout** settings, the top, bottom, right, or left section of the photograph may be cut off when the photograph is printed.
-



- 1** Press the **Mode** button, and select **Print One**.
- 2** Move the  (cursor) to **First-/Order-** by pressing the  (top) and  (bottom) buttons.
- 3** Display the number of the photograph to be printed by pressing the  (left) and  (right) buttons.
- 4** Set **Media Type** and **Layout**.

See "Print Applications" on page 44.

➡ Note

If you select a multiple pattern ([2][4][8][16]) in **Layout**, the same photograph is printed for the specified copy count on one sheet of paper. See "Setting the Print Layout (Layout)" on page 45.

5 Load paper into the printer.

You will need the number of sheets displayed in **Required Sheets**.

➡ Note

For instructions on loading paper, see "Loading Paper" on page 9 or the "User's Guide."

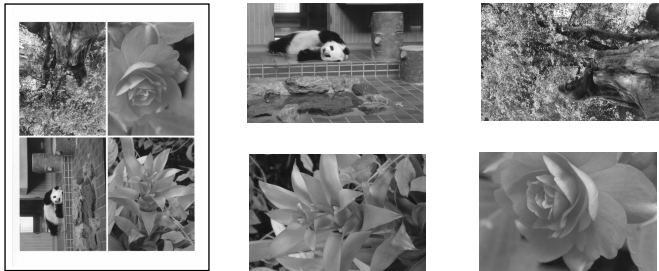
For details on the paper types that can be used, see "Setting the Media Type" on page 44.

6 Press the **Print** button.

Printing starts.

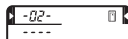
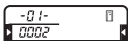
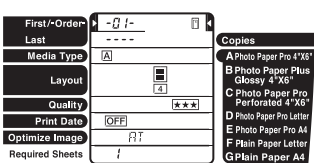
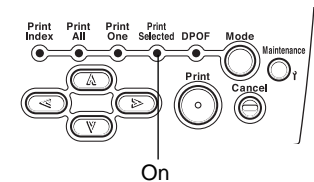
■ Printing Selected Photographs in Batch Printing (Specified Frame Printing)













This mode allows you to specify photographs to be printed and print the photographs in batch printing. Up to 99 photographs can be specified.



➡ Notes

- You will need the photograph numbers to specify photographs to be printed. To check the photograph numbers, use index printing. For details, see "Printing a Photograph List (Index Printing)" on page 37.
- Printing is enlarged or reduced automatically to match the paper size. Depending on the **Media Type** and **Layout** settings, the top, bottom, right, or left section of the photograph may be cut off when the photograph is printed.



- 1 Press the **Mode** button, and select **Print Selected**.
- 2 Move the  (cursor) to **First/-Order-** by pressing the  (top) and  (bottom) buttons.
- 3 Display [-01-] by pressing the  (left) and  (right) button.
[-01-] indicates the first frame.
- 4 Move the  (cursor) to **Last** by pressing the  (down) button.
- 5 Display the number of the photograph to be printed by pressing the  (left) and  (right) buttons.
- 6 Move the  (cursor) to **First/-Order-** by pressing the  (up) button.
- 7 Display [-02-] by pressing the  (right) button.
[-02-] indicates the second frame.

- 8** To specify a frame after the second frame, repeat step 2 to 5.

If you select ---- for **Last**, that frame will not be printed.

9 Set Media Type and Layout.

See "Print Applications" on page 44.

10 Load paper into the printer.

You will need the number of sheets displayed in **Required Sheets**.

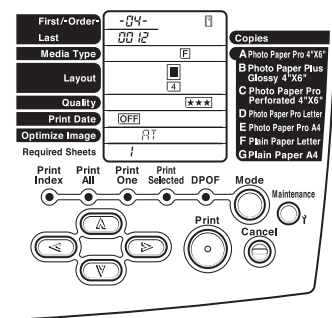
➡ **Note**

For instructions on loading paper, see "Loading Paper" on page 9 or the "User's Guide."

For details on the paper types that can be used, see "Setting the Media Type" on page 44.

11 Press the Print button.

Printing starts.

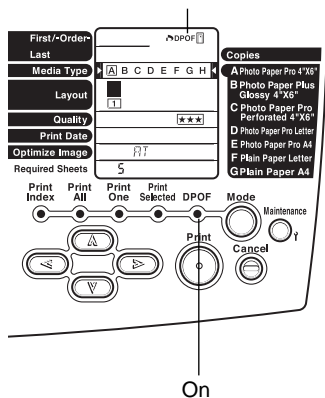


■ **Printing According to Camera Settings (DPOF Printing)**

If Digital Print Order Format (DPOF) settings are specified in the digital camera, the printing begins automatically according to the specified settings.

➡ **Notes**

- This printer supports the following DPOF functions.
 - Specification of photographs to be printed
 - Print style (standard, index)
 - Date printing/photograph number printing (If both are selected, only date printing will be set.)
 - Number of copies to be printedAll other DPOF functions (shooting information, trimming function, etc.) are not supported.
 - Printing is enlarged or reduced automatically to match the paper size. Depending on the **Media Type** and **Layout** settings, the top, bottom, right, or left section of the photograph may be cut off when the photograph is printed.
-



1 Press the **Mode** button, and select **DPOF** mode.

↳ **Notes**

- When memory cards containing photographs in DPOF are set in the slot, the DPOF mark appears on the operation panel, and DPOF mode is automatically selected. Use the mode button to select another mode if you do not want to print in the DPOF mode.
- DPOF mode cannot be selected unless there are photographs in DPOF.

2 Set **Media Type** and **Layout**.

See "Print Applications" on page 44.

↳ **Note**

Specify the number of copies and date printing from the digital camera.

3 Load paper into the printer.

You will need the number of sheets displayed in **Required Sheets**.

↳ **Note**

For instructions on loading paper, see "Loading Paper" on page 9 or the "User's Guide."

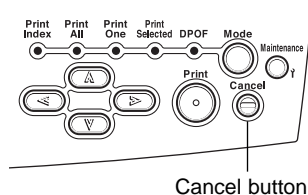
For details on the paper types that can be used, see "Setting the Media Type" on page 44.

4 Press the **Print** button.

Printing starts.

■ **Stopping Printing**

Starting printing without using the computer, you can stop printing from the operation panel.



1 Press the **Cancel** button.

3 ■ Print Applications

You can set the type of paper and layout to be used in printing, the number of print copies, photograph correction, quality, and dated printing. Set these settings after you set the print mode (Index, All Frames, Single Frame, Specified Frame, and DPOF).

■ Setting the Number of Print Copies (Copies)

Copies allows you to set the number of copies in Single Frame mode.

➡ Notes

- **Copies** cannot be set in Index, All Frames, or Specified Frame mode.
- For DPOF mode, set **Copies** from the digital camera.
- **Copies** allows you to specify the number of copies for one photograph. The number of required sheets differs depending on the setting in **Layout**. For example, if eight copies in **Copies** and four patterns in one sheet in **Layout** are specified, two sheets are needed to print.

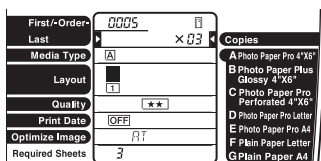
1 Set Single Frame mode.

See "Printing Photographs One at a Time (Single Frame Printing)" on page 39.

2 Move the (cursor) to **Copies** by press the (top) and (bottom) buttons.

Up to 99 copies can be set.

3 Set the number of copies by press the (left) and (right) buttons.



■ Setting the Media Type (Media Type)

You can select the paper for printing from the following seven types:



<PR-101>



<FM-101, PC-101S>

Operation panel display	Media name and size
[A]	Photo Paper Pro for Borderless printing (PR-101)
[B]	Photo Paper Plus Glossy (4" x 6") (PP-101)
[C]	Photo Paper Pro (PC-101S)
[D]	Photo Paper Pro Letter size (PR-101)
[E]	Photo Paper Pro A4 size (PR-101)
[F]	Plain Paper Letter
[G]	Plain Paper A4

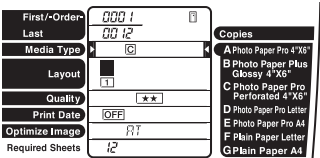
1 Set the print mode.

See "Printing Photographs" on page 35.

2 Move the (cursor) to **Media Type** by pressing the (top) and (bottom) buttons.

3 Select the media type by pressing the (left) and (right) buttons.

You can check the media name that corresponds to each letter on the right side of the operation panel.



■ Setting the Print Layout (Layout)

You can set the number of photographs (layout) to be printed on one sheet of paper.








↪ Notes


- In Index mode, **Layout** cannot be set.
- In Single Frame mode, the same photograph is printed in a line for the designated number in the specified layout.
- In All Frames, Specified Frame, and DPOF mode, the sections that have no photograph to print are left blank.


1 Set the print mode.

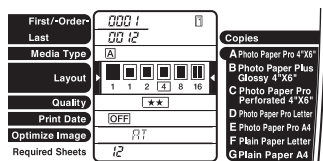
See "Printing Photographs" on page 35.

2 Move the  (cursor) to **Layout** by pressing the  (top) and  (bottom) buttons.

3 Select the layout by pressing the  (left) and  (right) buttons.

Select  to print a borderless photograph.

Select  to print a bordered photograph.



■ Setting the Print Quality (Quality)




You can set the print quality.



➡ Note

The print quality that can be set differs according to the media type and the print mode.

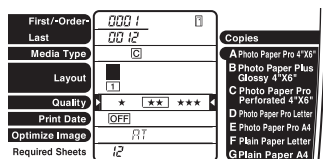
1 Set the print mode.

See "Printing Photographs" on page 35.

2 Move the  (cursor) to **Quality** by pressing the  (top) and  (bottom) buttons.

3 Select the quality by pressing the  (left) and  (right) buttons.

When the number of ★ is high, the photographs can be printed finely. When the number of ★ is low, the photographs can be printed quickly.



■ Printing the Date When the Photograph Was Taken (Date Printing)

The date when the photograph was taken, as recorded in the digital camera, is printed.



Index printing



Printing of full screen without frame

First/Order	000 1	
Last	00 12	
Media Type		
Layout		
Quality		
Print Date	OFF	ON
Optimize Image	AT	
Required Sheets	12	

Copies
A Photo Paper Pro 4"X6"
B Photo Paper Plus Glossy 4"X6"
C Photo Paper Pro Perforated 4"X6"
D Photo Paper Pro Letter
E Photo Paper Pro A4
F Plain Paper Letter
G Plain Paper A4

➔ Note

In DPOF mode, set **Print Date** from the digital camera.

1 Set the print mode.

See "Printing Photographs" on page 35.

2 Move the (cursor) to **Print Date** by pressing the (top) and (bottom) buttons.

3 Select **OFF** (disable)/**ON** (enable) for date printing by pressing the (left) or (right) button.

■ Correcting Photographs (Image Correction)

This function automatically corrects photographs before printing them. This function is effective when printing photographs that fogged because of fluorescent lighting effects or photographs that do not have proper exposure.

➔ Notes

- When image correction is performed, printing may take a long time.
- The actual image and coloring may differ from the printed ones depending on the photograph.

First/Order	000 1	
Last	00 12	
Media Type		
Layout		
Quality		
Print Date	OFF	ON
Optimize Image	AT	
Required Sheets	12	

Copies
A Photo Paper Pro 4"X6"
B Photo Paper Plus Glossy 4"X6"
C Photo Paper Pro Perforated 4"X6"
D Photo Paper Pro Letter
E Photo Paper Pro A4
F Plain Paper Letter
G Plain Paper A4

1 Set the print mode.

See "Printing Photographs" on page 35.

2 Move the (cursor) to **Optimize Image** by pressing the (top) and (bottom) buttons.

3 Select **OFF** (disable)/**ON** (enable) for image correction by pressing the (left) of (right) buttons.

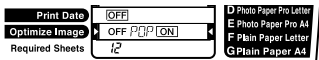
➔ Note

Setup for 'AT' : Images are automatically corrected when data in formats supporting Exif 2.2 (ExifPrint) is printed.

➡ **Note**

To set more detailed photograph correction, two correction functions, a correction for colour fogginess and exposure (Photo Optimizer PRO function) and a correction for reproducing vivid colors (Vivid Photo function), are performed. To set only one correction function, follow the procedure below.

- 1** Select **ON** (enable) for **Optimize Image** by pressing the ◀ (left) or ▶ (right) button.



To use only the correction function for colour fogginess and exposure (Photo Optimizer PRO function)

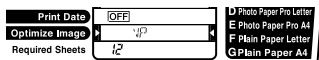
- 2** Press the ▶ (right) button once.

The display changes to [POP[ON]], and only the Photo Optimizer PRO function becomes enabled.

To use only the correction function for reproducing vivid colours (VIVID Photo function)

- 3** Press the ▶ (right) button twice.

The display changes to [VP[ON]], and only the VIVID Photo function becomes enabled.



4 ■ If Photographs Cannot Be Printed Clearly (Operation Panel Section)

If ink is still remaining but printing is blurred or a certain colour does not come out, nozzles in the print head may be clogged or the print head may be out of position.

Use the Maintenance function to maintain the print quality.

■ Maintenance Operation Flow

↳ Notes

Before Performing the Maintenance Operation

- Open the front cover, and check that the ink tanks are properly set by pressing the PUSH section of the ink tanks. See "Installing the Ink Tanks" on page 7.
 - Check the remaining amount of ink. If ink has run out, replace the ink tanks.
-

STEP1

Printing the Nozzle Check Pattern (see page 50)

Print the check pattern for checking whether ink is being ejected properly from the print head nozzles and whether the print head is correctly positioned.



If ink is not properly ejected



STEP2

Cleaning the Print Head (see page 51)

If ink is not being ejected properly, clean the print head.



STEP3

Deep cleaning the Print Head (see page 52)

If ink is not being ejected properly even after print head cleaning, perform deep cleaning the print head.



If head is out of position



STEP2

Adjusting the Print Head Position (see page 20)

If the print head is out of position, adjust the print head position.

↳ Note

If the quality does not improve even though you increase the print quality setting in the printer driver and carry out all operations up to **Step 3**, the print head may be damaged. Contact the store where you bought the printer or a repair center.

■ Printing the Nozzle Check Pattern

Print the nozzle check pattern and check whether inks is being ejected properly from the print head nozzles and whether the print head is correctly positioned.

➡ **Note**

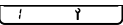
You can also print the nozzle check pattern by pressing the Reset button of the printer. Follow the procedure below.

- 1** Check that the printer is on.
- 2** Load A4-size plain paper.
- 3** Keep the Reset button pressed down, and release it when the power lamp blinks twice.

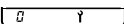
- 1** Check that the printer is on.
- 2** Load A4-size paper.
- 3** Press the **Maintenance** button.

The  icon appears in **Required Sheets**.

- 4** Press the  (right) button once.

The  icon appears.

- 5** Press the **Print** button.

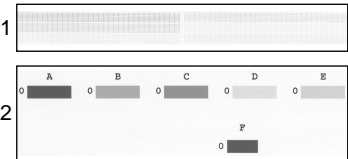
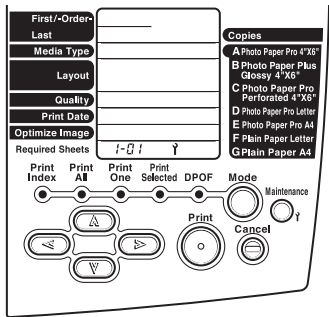
Nozzle check pattern is printed. When printing ends, the  icon appears.

- 6** Press the **Maintenance** button.

- 7** Check the nozzle check pattern.

If pattern 1 is broken, the print head must be cleaned. See "Cleaning the Print Head" on page 51.

If the vertical lines in pattern 2 stand out, the print head position must be adjusted. See "Adjusting the Print Head" on page 20.



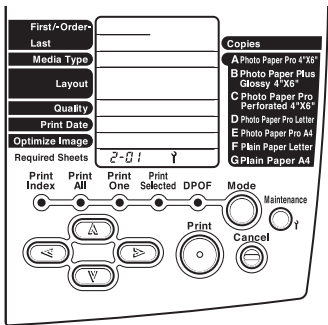
Cleaning the Print Head

Clean the print head if a nozzle in the print head becomes clogged. Perform print head cleaning only when necessary because the operation consumes a lot of ink.

Note

You can also perform print head cleaning by pressing the Reset button on the printer. Follow the procedure below.

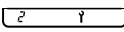
- 1 Check that the printer is on.
- 2 Keep the Reset button pressed down, and release it when the power lamp blinks once.



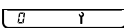
- 1 Press the **Maintenance** button.

The  icon appears in **Required Sheets**.

- 2 Press the  (right) button twice.

The icon  is displayed.

- 3 Press the **Print** button.

Print head cleaning starts. When cleaning ends, the  icon appears.

- 4 Press the **Maintenance** button.

- 5 Print the nozzle check pattern, and check that the pattern is printed correctly.

See "Printing the Nozzle Check Pattern" on page 50.

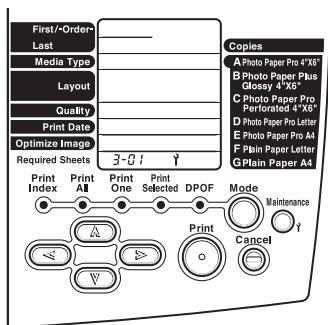
- 6 If there is no improvement, repeat print head cleaning up to three times.
- 7 If there is still no improvement, perform print head deep cleaning.

See "Deep cleaning the Print Head" on page 52.

■ Deep cleaning the Print Head

If print head cleaning is not effective, perform print head deep cleaning, which is a stronger cleaning process.


Perform print head deep cleaning only when necessary because print head deep cleaning consumes more ink than standard print head cleaning.




1 Press the **Maintenance** button.

The  icon appears in **Required Sheets**.

2 Press the (right) button three times.

The  icon appears.

3 Press the **Print** button.

Print head deep cleaning starts. When deep cleaning is completed, the  is displayed.

4 Press the **Maintenance** button.

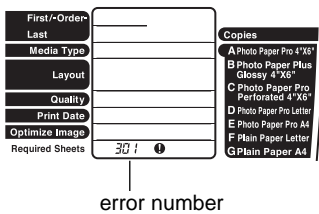
5 Print the nozzle check pattern, and check that the pattern is printed correctly.

See "Printing the Nozzle Check Pattern" on page 50.

If there is no improvement, the print head may be damaged. Contact the store where you bought the printer or a nearby repair center.

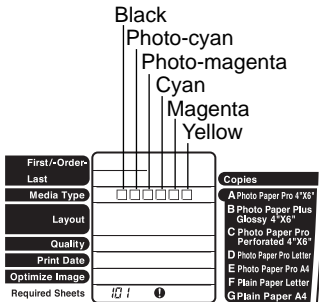
5 If an Error Is Displayed on the Operation Panel

If an error number is displayed on the operation panel, correct the error according to the procedure below.



➡ Note

If the display or buttons on the operation panel are not operating properly even through an error is not displayed, turn off the printer, unplug the power cord, and then turn on the power again.



➡ Note

The colour of the ink tank affected by the error can be checked in **Media Type**. An error has occurred in the ink tank indicated by the blinking position.

Error number: 001

Cause: Printer is being used.

Corrective action:

Printing starts when printing from the computer is completed. Press the **Cancel** button to stop printing.

Error number: 002

Cause: Printer is not ready.

Corrective action:

Wait until preparations are completed. Printing will start when preparations are completed.

Error number: 101

Cause: Ink level is low.

Corrective action:

Prepare a replacement ink tank. Press the **Print** button to restart printing even though the print level is low. Printing will start when the ink tank is replaced (see page 56). Press the **Cancel** button to stop printing.

Error number: 102

Cause: Position of paper thickness lever is not correct.

Corrective action:

Printing will start when you set the paper thickness lever to the correct position. Press the **Print** button to start printing with paper thickness lever position that is currently set. Press the **Cancel** button to stop printing.

Error number: 103

Cause: Position of paper thickness lever is incorrect and ink level is low.

Corrective action:

Prepare a replacement ink tank. Replace the ink tank (see page 56), and set the paper thickness lever to the correct position to start printing. Press the **Print** button to restart printing under the current conditions.

Error number: 201

Cause: Ink has run out.

Corrective action:

Press the **Cancel** button to stop printing, and then replace the ink tank (see page 56). Press the Reset button on the printer to start printing without any ink.

Error number: 202

Cause: Waste ink tank is full.

Corrective action:

Press the Reset button on the printer to restart printing. Immediately contact the store where you bought the printer or a repair center and request replacement of the waste ink tank.

Error number: 301, 302

Cause: No paper, paper cannot be fed, or paper jam.

Corrective action:

Load paper correctly, and press the Reset button on the printer to start printing. If a sheet is jammed, remove the jammed sheet (see page 2), load paper correctly, and then press the Reset button on the printer.

Error number: 401

Cause: Front cover is open.

Corrective action:

Close the front cover to start printing.

Error number: 402

Cause: Print head is not attached.

Corrective action:

Attach the print head (see page 6). If the print head is attached, remove the print head, ensure that the contact sections are clean, and then reattach the print head.

Error number: 611, 612

Cause:

- Time Out is activated during communication with the digital camera.
- A message that this printer does not support is sent from the digital camera.

Corrective action:

Remove the connected cable to reset the error. Reconnect the cable to the digital camera, and then start printing. For instructions on printing from a digital camera, see the user's guide that comes with the digital camera.

Error number: 802, 803, 809

Cause: Error occurred in printer.

Corrective action:

Press the **Cancel** button to stop printing, turn off the printer, wait awhile, and then turn on the power again. If the condition does not improve, contact the store where you bought the printer or a nearby repair center.

Error: An **-E-** (error) appears with **First/Order-** or **Last**.

Cause: Images on the installed memory card are recorded in formats that are not supported by this printer.

Corrective Action:

Such images are not printed.

Error: Photograph cannot be read from memory card. (The indicator lamp does not go on; memory card mark does not appear.)

Cause:

- Memory card or PC card adapter is not set properly.
- Memory card was ejected while data was being read.
- Memory card that cannot be used was set.

Corrective action:

- Insert a memory card deeply that can be used (see page 28).
If a memory card is already set, eject the card, set it again, and check that the indicator lamp goes on and the memory card mark appears. (The indicator lamp goes on and memory card mark appears on the panel when a PC card adapter and memory card compatible with this printer are set correctly, even if there are no available files on the memory card.)
- Check whether the PC card adapter is ATA-compliant.

➡ **Notes**

- When changing/modifying the content of the memory card with a computer, ensure to print from the computer.
 - If software applications for printing with a computer are included with the digital camera being used, use them to print the images.
-

➡ **Note**

If the error is not corrected by the above procedure, turn off the printer, unplug the power cord, and then turn on the power again.

Print Head Maintenance

■ If Blurring Occurs or If a Specific Colour Does Not Print

➡ **Note**

The steps below can be performed only from the computer. If you perform them from the operation panel, refer to “If Photographs Cannot Be Printed Clearly” on page 49.

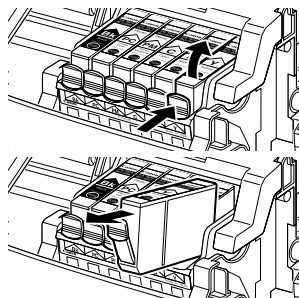
Perform print head cleaning to improve the print quality. Ensure that the printer is turned on and follow the instructions below.

- **Windows**
Open the printer driver settings screen and click the **Maintenance** tab. Click the **Cleaning** icon. See page 16 for details on how to open the setting screen.
- **Macintosh**
Open the **Page Setup** dialog box and click the **Utilities** button. Click the **Cleaning** icon.

■ When the Printer Runs out of Ink

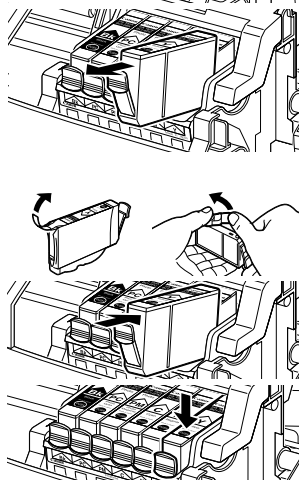
Replace the empty ink tank with a new one.
Specify the following ink tanks when purchasing.

Yellow	BCI-6Y
Magenta	BCI-6M
Cyan	BCI-6C
Photo Magenta	BCI-6PM Photo
Photo Cyan	BCI-6PC Photo
Black	BCI-6BK



- 1** Open the front cover and remove the empty ink tank.

Do not touch the lock lever.



- 2** Install the new ink tank.

Close the front cover when finished.

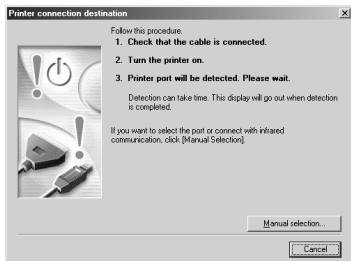
➡ **Note**

For more details about maintenance, refer to the User's Guide.

Notes on Handling the USB Interface (for Windows Users)

If installation of the printer driver does not proceed as instructed in this Quick Start Guide, there may be a problem with the USB driver installation. Try reinstalling the printer driver.

■ Reinstalling



If you cannot proceed beyond the **Printer Port** screen:

- 1** Click **Cancel**.
- 2** When the **Abort Installation** screen is displayed, click **Abort**.
- 3** When the **Terminate Installation** screen is displayed, click **OK**.
- 4** Turn the printer off.
- 5** Reinstall the printer driver (see page 10).

For Further Details...

For more information, place the Setup Software & User's Guide CD-ROM in the CD-ROM drive.

■ User's Guide Contents

The "User's Guide" is in PDF format and can be found on the same CD-ROM as the printer driver. You can view this Guide on screen and print out any sections you require.

Contents

- Printer driver functions
- Using Memory Card Utility
- Routine maintenance
- Printing media
- Troubleshooting
- Specifications

■ How to View the User's Guide

For Windows

- (1) Load the CD-ROM in your computer.
- (2) Click **Document** at the bottom left of the screen.
- (3) Click **View Documentation**.
If Acrobat Reader is not installed or Acrobat Reader 4.0 is installed, a message appears. Click **Yes**. Follow the instructions on screen to install the program. The User's Guide will appear once installation is complete.

For Macintosh

- (1) Load the CD-ROM in your computer.
If Acrobat Reader 3.0 or later is not already installed, double-click the **Acrobat Reader 4.0** folder in the **CD-ROM** folder, then double-click **Reader 4.0 Installer**. Follow the instructions on the screen to install Acrobat Reader.
- (2) Double-click the **Manual** folder.
- (3) Select a language folder.
- (4) Double-click the icon for the **S830D_UG_UK.PDF** file.

■ BJ Printer Driver Systems Requirements

For Windows

- Windows XP, Windows Me, Windows 2000, Windows 98
- USB interface
 - * Use a computer on which Windows XP, Windows Me, Windows 2000 or Windows 98 has been preinstalled (including computers preinstalled with Windows Me, Windows 98 upgraded to Windows XP or Windows 2000).
- 15MB of available hard-disk space for Windows Me/Windows 98
- 50MB of available hard-disk space for Windows XP/Windows 2000
- 16MB of available RAM for Windows 98
- 32MB of available RAM for Windows Me/Windows 2000 Professional
- 64MB of available RAM for Windows 2000 Server
- 128MB of available RAM for Windows XP

For Macintosh

- Macintosh series computer equipped with USB interface
- Preinstalled Mac OS 8.6 - Mac OS 9.x
- 30MB of available hard-disk space (including temporary storage space)

Additional Systems Requirements for User's Guide

To install Adobe Acrobat Reader and view the User's Guide:

- 8MB of available hard-disk space for Windows
- 13MB of available hard-disk space for Mac OS
- 640 x 480 pixels or greater, minimum 256 colours video display

■ Specifications

Printing method:

Bubble Jet on-demand

Printing resolution:

2400 (horizontal) x 1200 (vertical) dpi. max.

Print speed (printing with Canon standard pattern):

Black printing	Fast (Draft):	4 ppm
	Standard:	3.6 ppm
Colour printing	Fast (Draft):	4 ppm
	Standard:	2.4 ppm
Photo printing (PR-101 A4)	High (Fine):	0.47 ppm

Print direction:

Bi-directional

Print width:

203.2 mm/8.0 in max.

(for borderless printing: 216.0 mm/8.5 in)

Resident print control mode:

Canon extended mode

Receive buffer:

80 KB

Interface:

USB Full Speed

Interface connector:

USB standard Series B receptacle (USB interface)

Recommended printer cable:

Material:	AWG28 (data wiring pair) or AWG20 to 28 (distribution pair)
Type:	Twisted-pair shielded cable
Length:	Up to 2.0 m (6.5 ft)
Connectors:	USB standard Series B pluggable

Acoustic noise level:

Approx. 37 dB (A) (in the best quality mode)

Operating environment:

Temperature:	5 to 35°C (41 to 95°F)
Humidity:	10 to 90%RH (no condensation)

Storage environment:

Temperature: 0 to 35°C (32 to 95°F)
Humidity: 5 to 90% RH (no condensation)

Power supply:

Europe AC 230 V±10%, 50 Hz
USA/Canada AC 120 V, 60 Hz
Australia AC 240 V, 50 Hz

Power consumption:

Standby: 8 W
Printing: 29 W

Dimensions (without a paper rest and paper output tray):

430 (W) x 301 (D) x 188 (H) mm
16.9 (W) x 11.9 (D) x 7.4 (H) in

Weight:

Approx. 5.8 kg (11 lb.)

Feed method:

Continuous feed through auto sheet feeder
For Plain Paper, Envelopes, High Resolution Paper,
Glossy Photo Paper, High Gloss Photo Film,
Glossy Photo Cards, Photo Paper Pro,
Photo Paper Plus Glossy, Matte Photo Paper,
Transparencies, T-shirt Transfers, Banner Paper

Sheet feeder capacity:

Plain Paper (75 gsm)	100 sheets max.
High Resolution Paper	80 sheets max.
Envelopes	10 pieces max.
Glossy Photo Paper	1 sheet
High Gloss Photo Film	1 sheet
Glossy Photo Cards	20 sheets max.
Photo Paper Pro PR-101	A4/Letter: 1 sheet 4" x 6": 20 sheets max.
Photo Paper Pro PC-101S	20 sheets max.
Photo Paper Plus Glossy PP-101	A4/Letter: 1 sheet 4" x 6": 20 sheets max.
Matte Photo Paper MP-101	10 sheets max.
Transparencies	30 sheets max.
T-Shirt Transfers	1 sheet
Banner Paper	1 sheet

Ordinary print media:

Regular size: A4, A5, B5, 4"x6", Letter, Legal, European DL, US Com.#10

Custom size: width: 90.0 to 215.9 mm (3.54 to 8.5 in)
height: 120.0 to 584.2mm (4.72 to 23.0 in)

Weight: 64 to 105 g/m² (17 to 28 lb) for non-Canon brand media

Canon Special media:

High Resolution Paper	HR-101N
Glossy Photo Paper	GP-301/GP-301N
High Gloss Photo Film	HG-201
Glossy Photo Cards	FM-101
Photo Paper Pro	PR-101
Photo Paper Pro	PC-101S
Photo Paper Plus Glossy	PP-101
Matte Photo Paper	MP-101
Transparencies	CF-102
T-Shirt Transfers	TR-201
Banner Paper	

Graphic image printing:

Data format: Canon extended mode: Raster image format
Resolution: Canon extended mode: 600, 1200, 2400 dpi

Print Head:

Black, Photo Cyan, Photo Magenta, Cyan, Magenta, Yellow: 256 nozzles (1200 dpi)

Ink Tanks:

Capacity (page):	
Black (BCI-6BK)	approx. 620 ^{*1} , approx. 1150 ^{*2}
Cyan (BCI-6C)	approx. 980 ^{*2}
Magenta (BCI-6M)	approx. 740 ^{*2}
Yellow (BCI-6Y)	approx. 480 ^{*2}
Photo Cyan (BCI-6PC Photo)	approx. 430 ^{*2}
Photo Magenta (BCI-6PM Photo)	approx. 280 ^{*2}

- *1 1500 characters per page, normal text, at standard and plain paper mode with Windows Me/Windows 98
- *2 Based on printing the ISO JIS-SCID No.5 pattern selecting **Print a top-quality photo** and **plain paper** in the **Print Advisor** dialog box with Windows Me/Windows 98

Supported recording media:

Compact flash, smart media^{*3}, memory stick, SD memory card, multimedia card, micro drive, flash ATA card PCMCIA Type (II)

- *3 Some digital cameras do not support 64-MB or 128-MB memory cards. Photographs stored on a memory card that is not supported by the camera cannot be read may be destroyed.

Supported recording formats:

JPEG (DCF/CIFF/Exif 2.2 or later/JFIF), TIFF (Exif-compliant)
DPOF support

Storage function:

Supported operating systems

Windows XP, Windows 2000, Windows Me, Windows 98

Mac OS 8.6 - 9.x

Utilities

Use the storage utility that comes with the printer.

Functions

Read, write

Direct print function:

Interface

Card slot, Connector for digital camera print

Operation panel

Large LCD panel, 8 keys, 6 LEDs

Supported paper types (The letters enclosed in brackets ([]) are the selection items in **Media Type** on the operation panel.)

[A]Photo Paper Pro for Borderless printing (PR-101)

[B]Photo Paper Plus Glossy (4" x 6") (PP-101)

[C]Photo Paper Pro (PC-101S)

[D]Photo Paper Pro Letter size (PR-101)

[E]Photo Paper Pro A4 size (PR-101)

[F]Plain Paper Letter

[G]Plain Paper A4

Supported layouts

Photo Paper Pro series

Photo Paper Pro for Borderless printing 101.6 mm x 152.4 mm (PR-101)

:Borderless printing (from computer and operation panel), 2/4/8/16 patterns in one sheet, index

Photo Paper Plus Glossy (PR-101)

:Borderless printing (from computer and operation panel), 2/4/8/16 patterns in one sheet, index

Matte Photo Paper (MP-101)

:Borderless printing (from computer and operation panel), 2/4/8/16 patterns in one sheet, index

Photo Paper Pro (PC-101S)

:Borderless printing, index

Photo Paper Pro Letter size (PR-101)

:Borderless printing (from computer and operation panel), 2/4/8/16 patterns in one sheet, index

Photo Paper Pro A4 size (PR-101)

:Borderless printing (from computer and operation panel), 2/4/8/16 patterns in one sheet, index

Plain Paper*⁴

Plain Paper Letter

:2/4/8/16 patterns in one sheet, index

Plain Paper A4

:2/4/8/16 patterns in one sheet, index

*⁴ If printing with borders is executed from the operator panel, the printable areas are shown below. (These values are different from when printing is executed from a computer.)

A4: 203.2 x 257.0 mm (Top/bottom margins: 20 mm each, left/right margins: 3.4 mm each)

Print quality
Up to two levels for each media type
Date printing
Supported

Correction function
Photo Optimizer PRO, VIVID Photo

DPOF function

Ver. 1.00-compliant (Print index prints, Set the number of copies, Select images for print, Include the date on the print, Include the file number on the print)

Resolution

Up to 2400×1200 dpi

Specifications subject to change without prior notice.



- This publication uses 50% recycled paper.
- Document réalisé avec du papier recyclé à 50%.
- Diese Publikation wurde auf zu 50% wiederverwertetem Papier ausgedruckt.
- この印刷物は古紙を50%含んだ再生紙を使用しています。