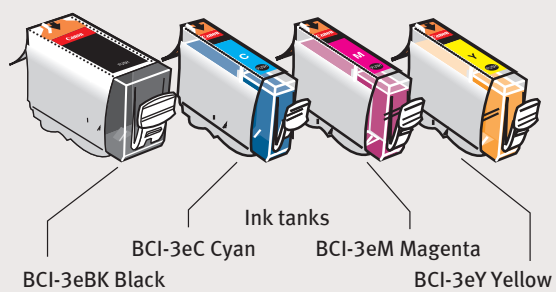
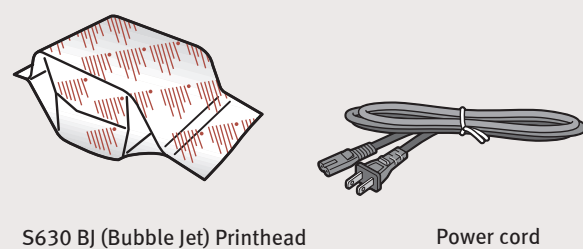
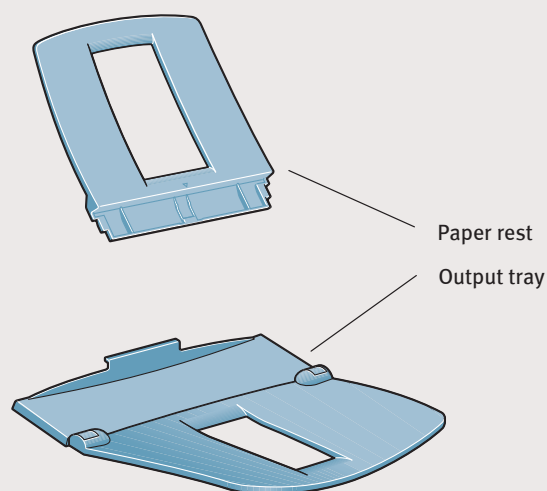


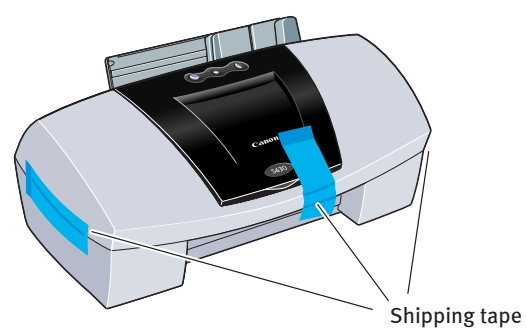
1 Unpack the Printer

- 1 Carefully remove all items from the box.

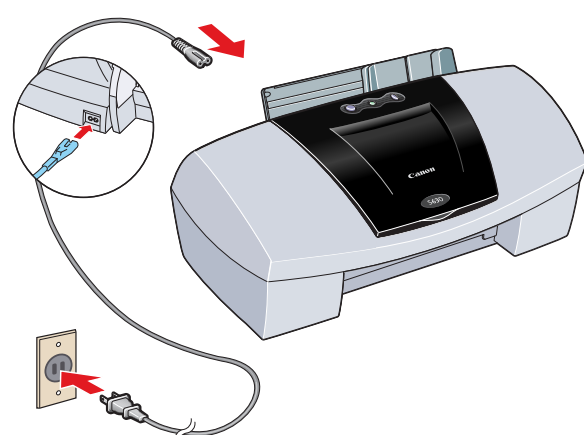


2 Prepare the Printer

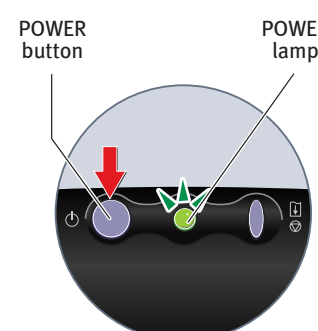
- 1 Remove the shipping tape from the front and sides of the printer.



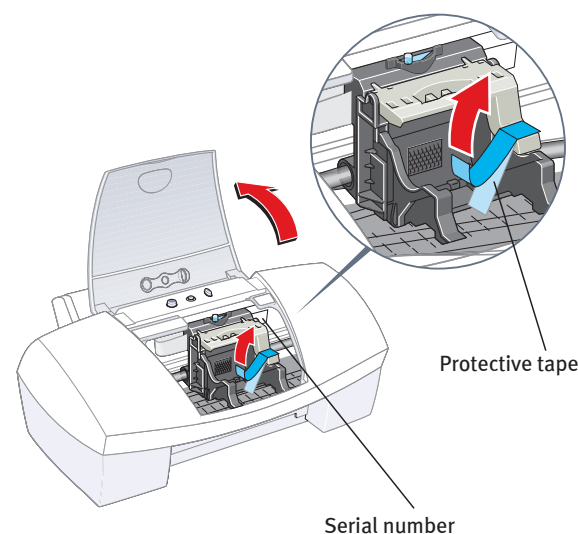
- 2 Plug the power cord into the back of the printer and connect the other end to a power outlet.



- 3 Press the POWER button to turn the printer ON.



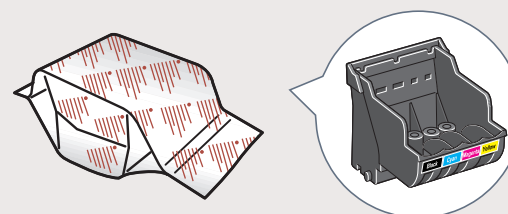
- 4 Open the front cover. The printhead holder automatically moves to the center. Remove the protective tape.



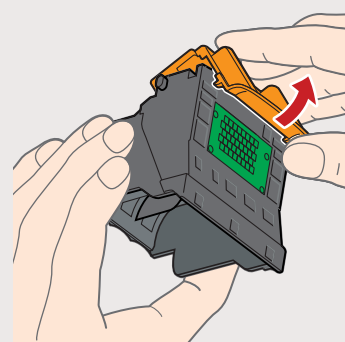
- 5 Write down the serial number located to the right of the printhead. You will need this later to register the product.

3 Install the Printhead

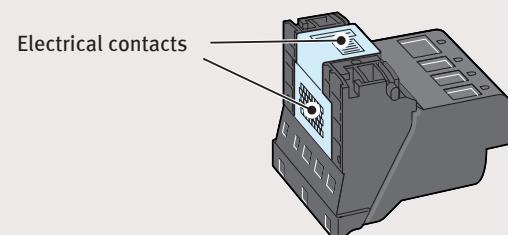
- 1 Remove the printhead from its package.



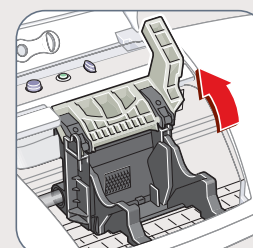
- 2 Turn the printhead over, then remove the orange protective cap.



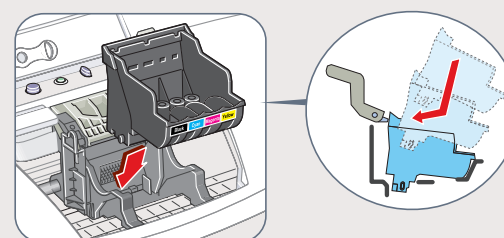
NOTE: Do not touch the electrical contacts.



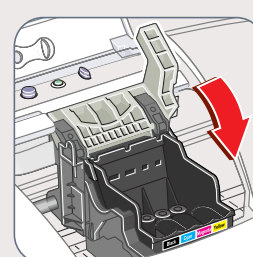
- 3 Raise the gray lock lever.



- 4 Slide the printhead into the holder. The printhead will rest at a slight angle. Do not press it down.

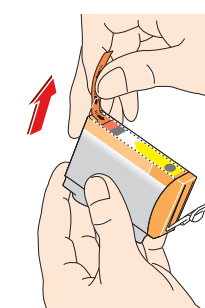


- 5 Lower the lock lever and press it down until it locks firmly into place.

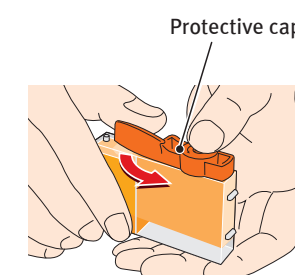


4 Install the Ink Tanks

- 1 Pull the orange tab off the yellow ink tank (BCI-3eY), then remove and discard the plastic wrapper.



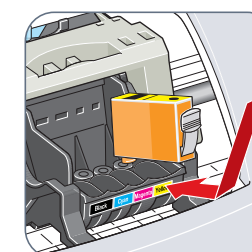
- 2 Twist off and discard the orange protective cap.



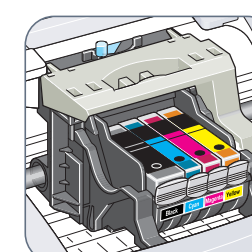
NOTE: To avoid spilling ink, never press on the sides of an ink tank.

- 3 Insert the ink tank into the correct slot. (Refer to the color guide on the printhead.)

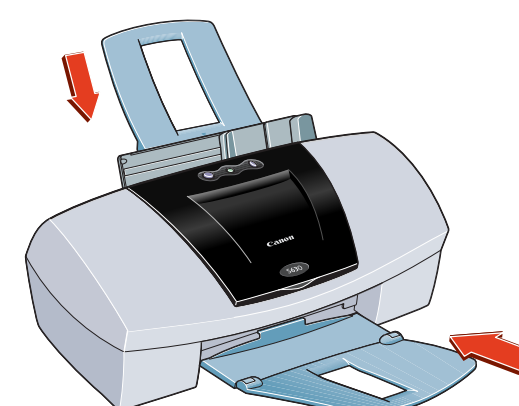
Press down gently until the ink tank locks into place.



- 4 Insert the remaining three ink tanks into their assigned slots.



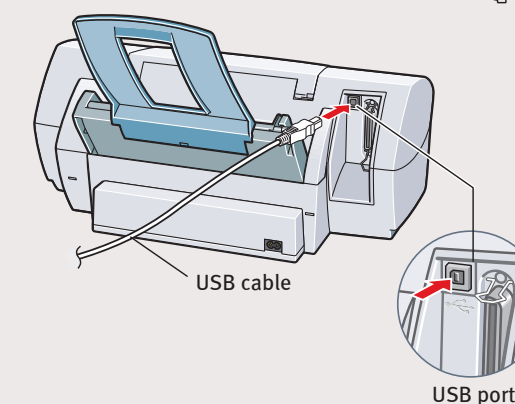
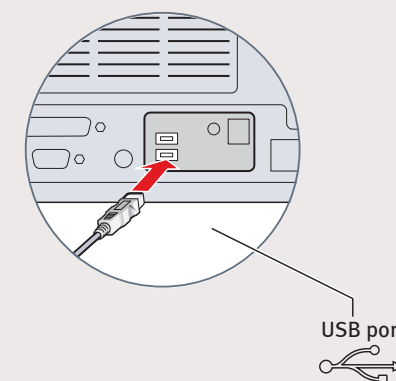
- 5 Close the front cover and attach the paper rest and output tray.



5 Connect the Printer To Your Computer

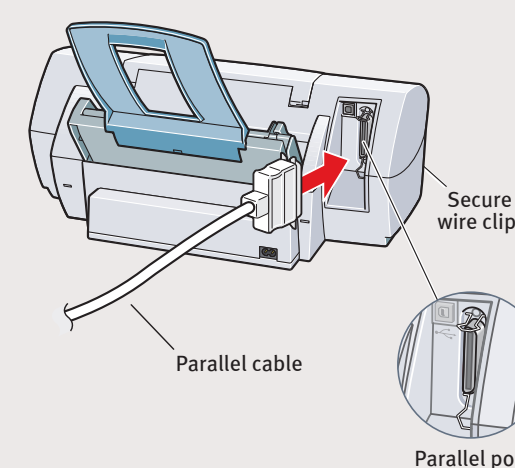
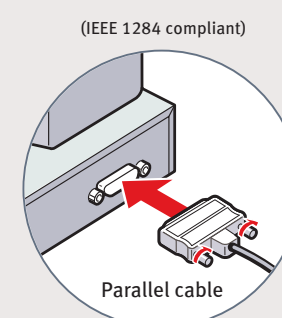
For USB Cables:

- 1 Turn the printer off.
- 2 Connect one end of the USB cable to the computer, the other to the printer.



For Parallel Cables:

- 1 Turn the printer off.
- 2 Connect one end of the parallel cable to the computer, the other to the printer.

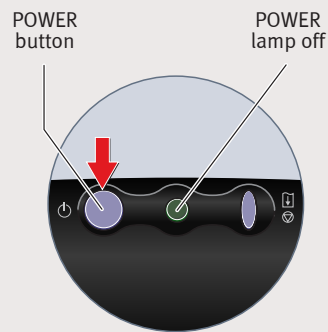


Continue with Step 6
on side two.



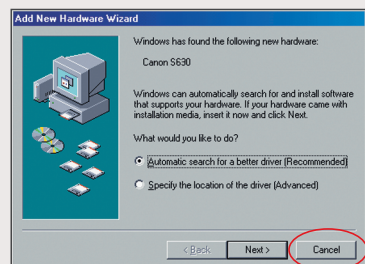
6 Install the Printer Driver (Windows®)

- 1 Be sure the printer is OFF before continuing.



NOTE: For Windows 2000 or Windows NT 4.0, log on to Windows as an Administrator before continuing.

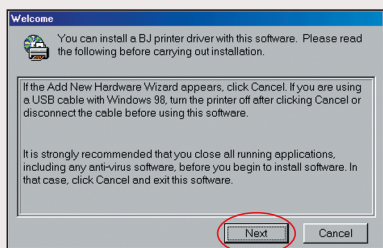
IMPORTANT: If you see this screen, click **Cancel** and continue.



- 2 Close any open software applications, then insert the S630 Setup Software & User's Guide CD-ROM. The setup program should run automatically.

NOTE: If the setup program does not run, click **Start**, then **Run**, then type **D:\msetup.exe**, where **D** is your CD-ROM drive.

- 3 Read the Welcome screen, then click **Next**.



- 4 Read the License Agreement, then click **Yes**.

- 5 When the main menu appears, click **Install Software**.

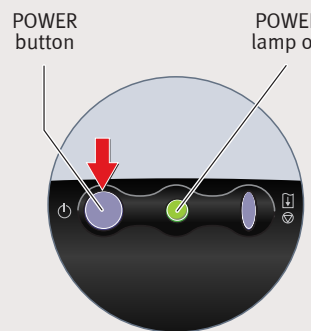


NOTE: If you are prompted to restart Windows, remove the CD-ROM, then click **OK**. After the computer restarts, insert the CD-ROM and continue.

- 6 Click **Start**. (If the Printer Driver button is not red, select **Printer Driver**, then click **Start**.) The printer driver will start loading automatically.



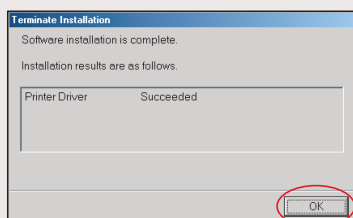
- 7 **TURN THE PRINTER ON** so the printer port (connection) can be automatically detected.



The software will begin identifying the printer port being used.

IMPORTANT: If your computer cannot detect a printer port, refer to the Troubleshooting chapter in the *S630 Quick Start Guide* for instructions.

- 8 When the Terminate Installation window appears, click **OK**.



- 9 If you are prompted to restart the computer, click **Yes**. When the installation and registration process has completed, click **Exit**.

NOTE: Remember to register your product to ensure product support. The serial number is located on the inside of the printer, to the right of the printhead.

- 10 To ensure highest quality output, continue with step 7 **Align the Printhead**.

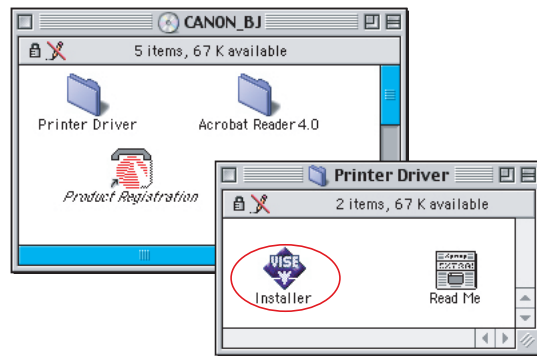
NOTE: You can now install the BJ Solution software. Insert the BJ Solution CD-ROM. The setup program should start automatically. Follow the on-screen instructions.

6 Install the Printer Driver (Macintosh®)

- 1 Insert the S630 Setup Software & User's Guide CD-ROM.

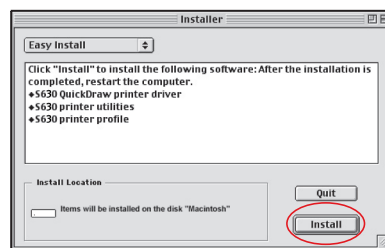
NOTE: Screen shots may differ depending on the operating system used.

- 2 Open the printer driver folder on the CD-ROM, then double-click the **Installer** icon.

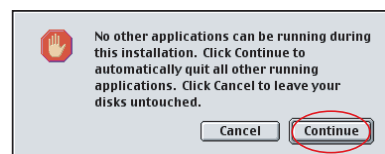


- 3 Read the License Agreement, then click **Accept**.

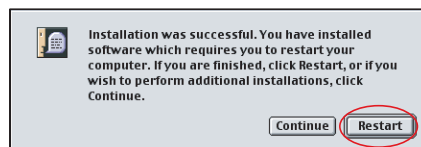
- 4 Click **Install**. The printer driver will load automatically.



- 5 If the message "No other applications can be running..." displays, click **Continue**.



- 6 When the "Installation was successful" screen displays, **Restart** your computer.



NOTE: Register your product to ensure product support. Open the printer driver folder and double-click the **Product Registration** icon, then follow the on-screen instructions.

The serial number is located on the inside of the printer, to the right of the printhead.

7 Align the Printhead

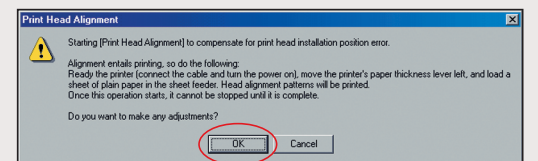
Before using the printer, align the printhead to ensure the best quality printing.

- 1 Load a stack of blank paper in the paper rest.

- 2 Start the alignment procedure.

Windows:

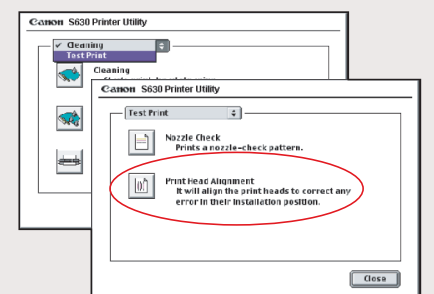
- a. Click **Start**, then **Settings**, then **Printers**.
- b. Right-click the **Canon S630** icon, then click **Properties**.
- c. Click the **Maintenance** tab, then click the **Print Head Alignment** icon.
- d. When asked to start printhead alignment, click **OK**.



- e. Follow the on-screen instructions to complete printhead alignment.

Macintosh:

- a. From the **File** menu in a software application, click **Page Setup**.
- b. Click the **Utilities** button.
- c. Click the down-arrow to select **Test Print**.
- d. Click the **Print Head Alignment** icon.



- e. Follow the on-screen instructions to complete printhead alignment.

- 3 Click **OK** (Windows) or **Close** (Macintosh) when finished.